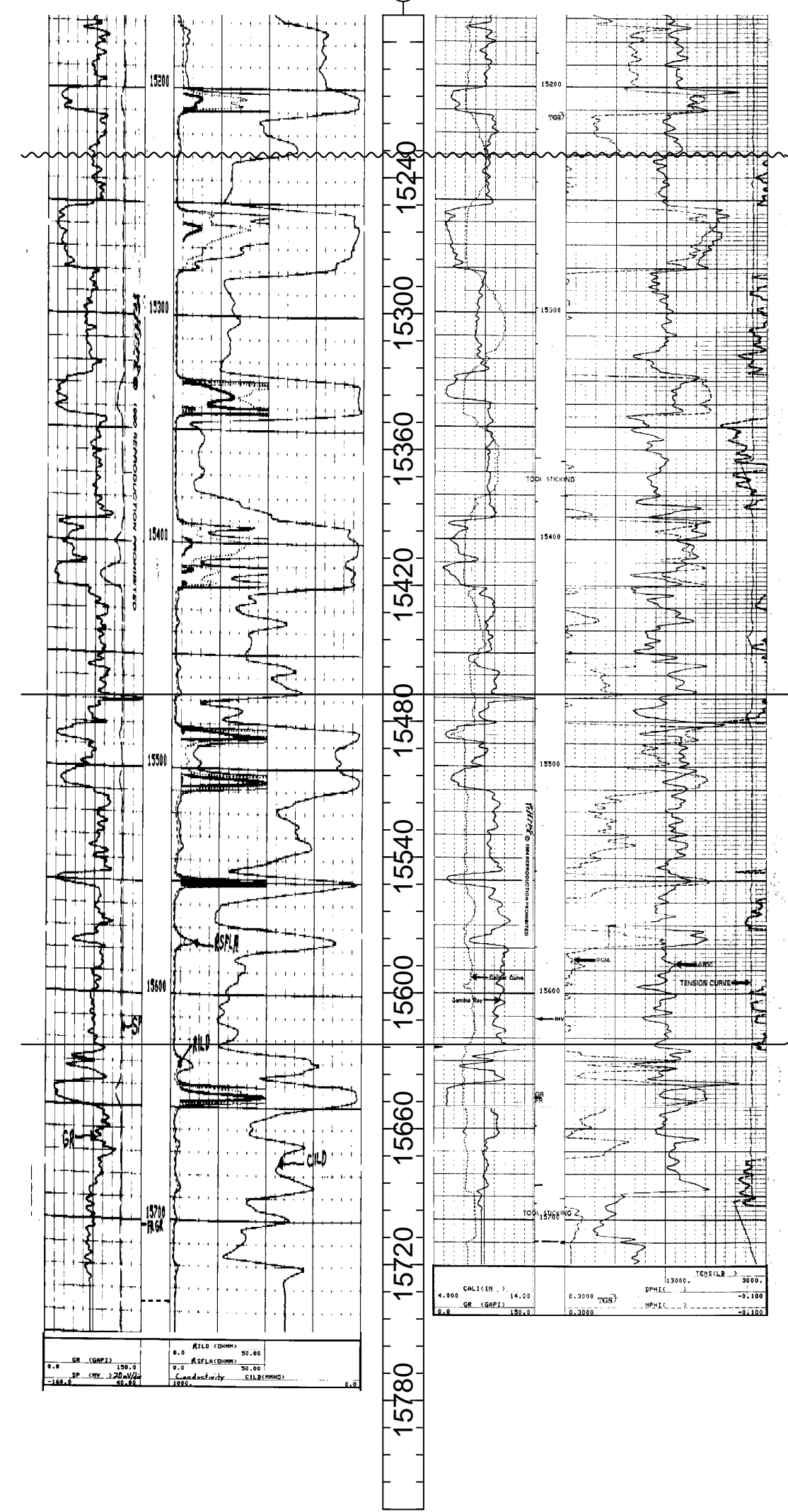
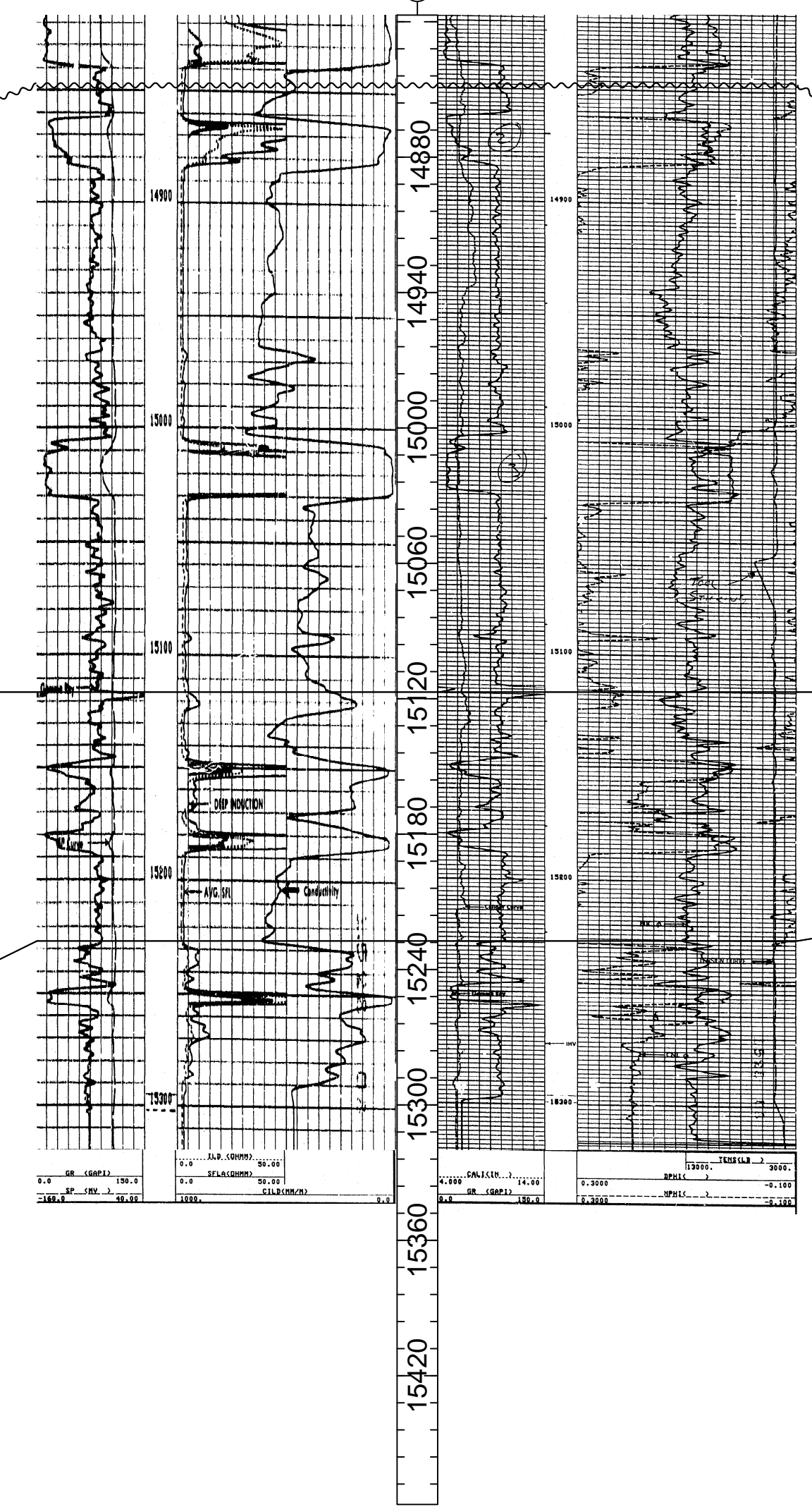


D

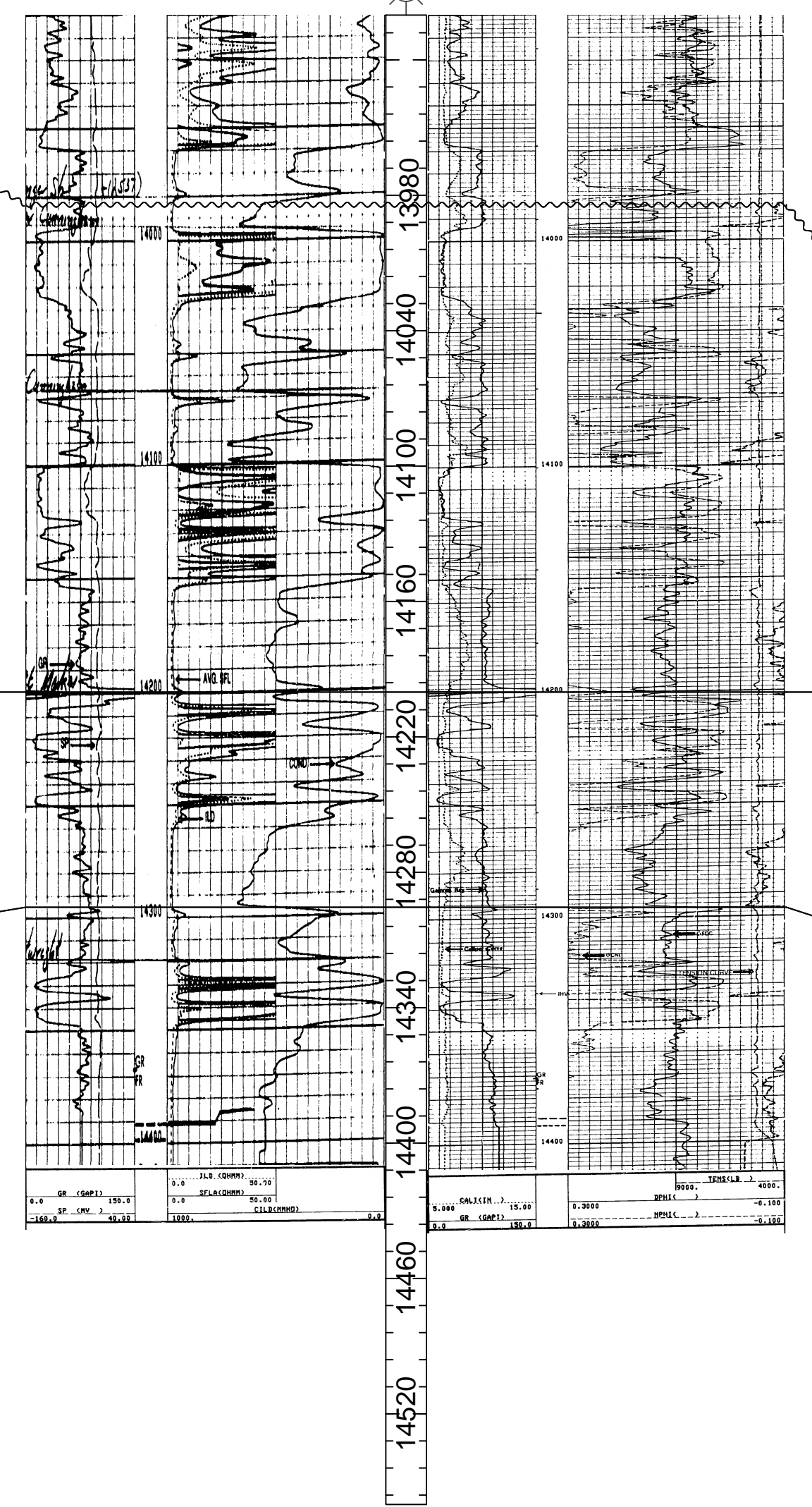
CHAMPLIN
CLAY HENRY
1-17
T10N R12W S17



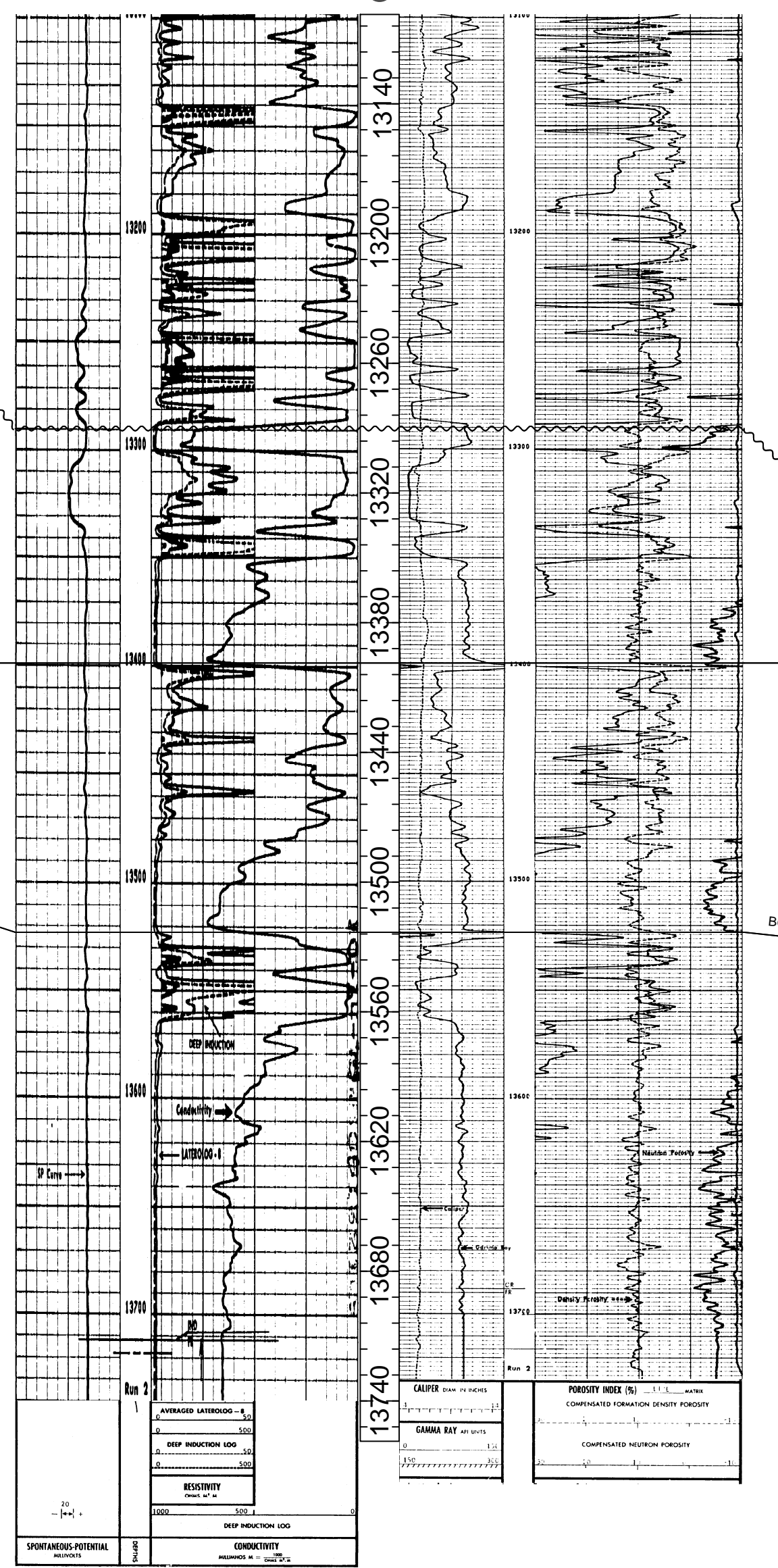
SANGUINE LTD
RHOADS
1
T10N R11W S18



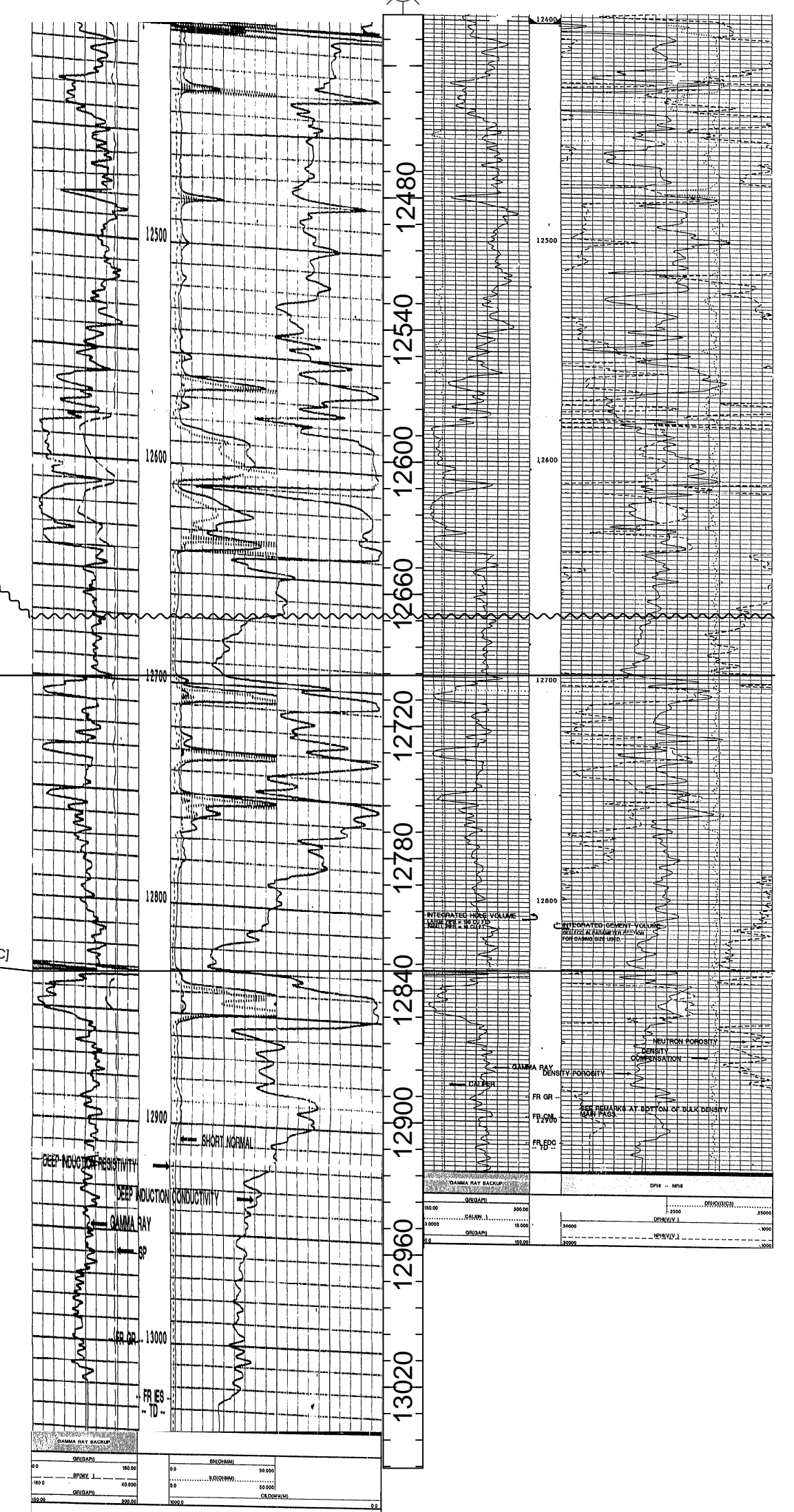
RAMSEY PROP MGMT INC
PHIFER
1-13
T10N R11W S13



NADEL & GUSSMAN
KISSINGER
1
T10N R10W S14



TECHNICAL ENERGY SER
KELLY UNIT 'B'
3
T10N R9W S28



D'