

AUG 31 1953

LIBRARY
TULSA COUNTY MEDICAL SOCIETY

September, 1953

THE BULLETIN

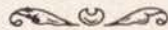
of the Tulsa County Medical Society

IN THIS ISSUE

Prominent New York Rehabilitation Specialist
To Speak in Tulsa On September 14th



Blue Cross Plan Sets Community Enrollment



American College Of Physicians Schedules
Regional Meeting In Tulsa September 19th



1954 Blood Donations Ahead of Last Year

Vol. 19

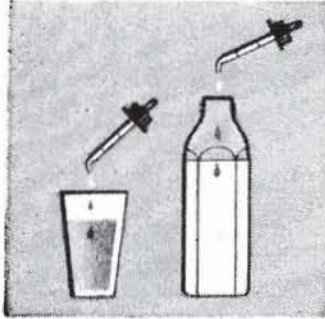


No. 9

superior flavor
Pleasant-tasting. No disagreeable aftertaste. Readily accepted without coaxing.



on every count



superior miscibility
Disperse readily in formula, fruit juice or water. Mix well with cereals, puddings or strained fruits.

superior convenience
Light, clear and non-sticky. Can be accurately measured and easily administered. No mixing necessary.



superior vitamin supplements for infants.



superior stability
Require no refrigeration. May safely be autoclaved with the formula.

Poly-Vi-Sol



MEAD JOHNSON & COMPANY
Evansville 21, Ind., U.S.A.

	Vitamin A	Vitamin D	Ascorbic Acid	Thiamine	Riboflavin	Niacinamide
POLY-VI-SOL Each 0.6 cc. supplies	5000 units	1000 units	50 mg.	1 mg.	0.8 mg.	6 mg.
TRI-VI-SOL Each 0.6 cc. supplies	5000 units	1000 units	50 mg.			
CE-VI-SOL Each 0.5 cc. supplies			50 mg.			

All vitamins are in synthetic (hypoallergenic) form.



Local Representative: J. D. Parks, 2737 N. W. 25th, Oklahoma City, Okla., 92

76.6% of patients

preferred

EURAX[®] CREAM...

for
relief
of
pruritus

In a recent study¹ of 200 cases of itching dermatoses, 76.6% of all patients who had had previous experience with other antipruritics expressed a preference for EURAX Cream.

In this study, as in previous reports²⁻⁵, EURAX Cream produced complete relief of itching in approximately 65 per cent of cases, and partial relief in most of the remainder.

Other favorable features of EURAX Cream that were again confirmed include:

- ✓ ***Prolonged effect lasting up to 8 hours or more.***
- ✓ ***No loss of effect on continued use.***
- ✓ ***Virtually complete lack of sensitizing or toxic properties.***

EURAX... not an antihistaminic or a -caine derivative... is indicated for prompt, prolonged relief of itch in practically all forms of dermatosis including pruritus due to administration of antibiotics.

EURAX Cream* (brand of crotonon cream) contains 10% N-ethyl-o-crotonoluide in a vanishing-cream base.
Tubes of 20 Gm. and 60 Gm. and jars of 1 lb. at your local pharmacy.

Bibliography

1. Hitch, J. M.: North Carolina M. J. 12:548, 1951.
 2. Peck, S. M., and Michelfelder, T. J.: New York State J. Med. 50:1934, 1950.
 3. Couperus, M.: J. Invest. Dermat. 13:35, 1949.
 4. Soifer, A.: Quart. Rev. Int. Med. & Dermat. 8:1, 1951.
 5. Johnson, S. M., and Bringe, J. W.: Arch. Dermat. & Syph. 63:768, 1951.
- *U.S. Pat. #2,505,681.

Samples and Reprints on Request



GEIGY PHARMACEUTICALS
Division of Geigy Co., Inc.
220 Church St., New York 13, N. Y.

Medicine and Pharmacy

Both the physician and the pharmacist have a common objective — the amelioration of suffering and the maintenance of sound body health. Both are interdependent upon the other. The physician prescribes, the pharmacist compounds and delivers the individualized medicine. Truly analogous responsibilities.

For prompt city-wide free delivery of your sickroom needs just

telephone 4-0121

Prather's
MEDICAL ARTS
PRESCRIPTION
(R) *Shop*

In the Medical Arts Building

GETMAN'S

ROY R. GETMAN, Founder



Store Number One
MAIN & 6TH
Telephone 3-6171

Store Number Two
4606 EAST 11TH
Telephone 9-5233

*As Near To You
As Your Telephone*

"DEPENDABILITY"

You may depend upon us to carry out the orders on your prescriptions explicitly and, if you desire, make prompt delivery to the patient's home.

FREE DELIVERY NIGHT AND DAY.

WE GIVE S & H GREEN STAMPS

Sponsors of the "Tell Me, Doctor" Radio Broadcasts at 5:15 P.M. each Monday through Friday, KTUL, prepared by The Oklahoma State Medical Association.

With The Editor . . .

Before its recent adjournment Congress managed to remove from proposed legislation most of the restrictions governing the rendering of care for non-service connected disabilities in Veterans Administration hospitals . . . Acting on annual appropriations bills the lawmakers whacked out a number of provisions which would have ruled out this type of care at VA facilities . . . The action comes as no surprise, of course, and dampens hopes of American Medicine to restrict such care to the private office . . . As a consequence look for more non-service connected ailments being cared for at government expense . . . Medicine loses a staunch friend with the death of Senator Robert A. Taft . . . Probably more than any lawmaker he fought on the side of free enterprise of medicine . . . A heavy favorite of the medical profession for the presidential nomination last year, Taft leaves a void not easily filled . . . As this issue of The Bulletin goes to press the dogfight between city officials and builders of a proposed medical building at 17th and Utica appears headed for the courts . . . After a long series of hearings the City Commission refused a spot rezoning to permit construction of a three-story multi-million dollar building for medical and dental offices . . . Dates for the 1954 annual meeting of the Oklahoma State Medical Association have been set for May 10-12 at Oklahoma City . . . First visiting distinguished guest speakers to be scheduled for next year by the Tulsa County Medical Society are Dr. William J. Gardner, Cleveland Clinic neurosurgeon, February 22nd, and Dr. Harry E. Bacon of Philadelphia, dean of American proctologists, March 8th . . . AMA survey among military installations shows 52 per cent of medical units adequately staffed, 25 per cent under-staffed, and 23 per cent over-staffed . . . Survey was based on medical officers own estimates . . . Tulsa County meat inspection program appears set if county commissioners can iron out financing problem . . . proposed budget calls for \$30,000 in next ten months.

NEW!

For Gastro-Intestinal Dysfunction

An Improved Anticholinergic Agent

'Elorine Sulfate' relieves spasm and hypermotility of the gastro-intestinal tract, with *negligible side-effects*. It is an excellent adjunct in peptic ulcer therapy. As an anticholinergic drug, 'Elorine Sulfate' effectively inhibits neural stimuli at those ganglia and

effectors where the presence of acetylcholine mediates transmission of stimuli. Clinical data show profound inhibiting effect on intestinal motility in doses of 50 to 75 mg. Within this effective dosage range, side-effects are minimal. May we send you literature?



PULVULES

ELORINE

(Tricyclamol Sulfate, Lilly)

SULFATE

For spasmolysis *without* sedation—
in 25 and 50-mg. pulvules.

PULVULES

CO-ELORINE

(Tricyclamol Sulfate and Amobarbital, Lilly)

Formula: 'Elorine Sulfate' 25 mg.
'Amytal' (Amobarbital, Lilly) 8 mg.
Combines 'Elorine Sulfate' with 'Amytal' to provide mild sedation in addition to the spasmolytic effect.

THE BULLETIN

OF THE

TULSA COUNTY MEDICAL SOCIETY

John G. Matt, M.D., *President*W. D. Hoover, M.D., *President-Elect*Logan A. Spann, M.D., *Vice-President*W. R. Turnbow, M.D., *Secretary-Treasurer*Jack Spears, *Executive Secretary*

Vol. 19

TULSA, OKLAHOMA, SEPTEMBER, 1953

No. 9

BLUE CROSS SETS OPEN ENROLLMENT

Non-Group Memberships To Be Offered To General Public During Two-Week Period Beginning September 28th. Blue Shield Coverage Also Included.

Tulsa's first open community enrollment in the Blue Cross and Blue Shield Plans of Oklahoma will be conducted during a two-week period beginning September 28 and closing October 10, 1953. The move will make available the valuable hospital and surgical care insurance to thousands of persons not normally eligible for admission to existing groups.

At the same time the Blue Cross-Blue Shield Plans will open all regular groups for the admission of new members. This special enrollment will be in addition to the regular anniversary enrollment conducted each year. Both the Physicians & Surgeons Group and the Medical Assistants Group of the Tulsa County Medical Society will accept new applicants during this period.

The Blue Cross contract to be offered to non-group enrollees will include only thirty days of hospital care per contract year for each person of the membership. Under the terms of the contract the member must also assume \$3.00 of the total charges for Blue Cross benefits for each day hospitalized. Other than these two different features, the non-group contract greatly parallels the regular Blue Cross group benefits. New members accepted into existing groups will receive regular benefits enjoyed by that group.

The non-group contract to be offered will carry a monthly premium of \$3.45 for a one-person membership and \$6.90 for family membership. This is for both Blue Cross and Blue Shield coverage. Members must also pay a \$1.00 enroll-

ment fee at the time the first premium is due. Protection becomes effective November 1, 1953. Non-group members will be billed directly from the Blue Cross-Blue Shield offices on a quarterly basis.

To be eligible to apply, a person must be a resident of Tulsa county or the City of Tulsa and must be under 65 years of age. Dependency benefits are limited to spouse and unmarried children under 21 years of age living at home.

The projected community enrollment has been formally endorsed by the Tulsa County Medical Society. Doctors will be asked to cooperate with the Blue Cross-Blue Shield Plans in the following manner:

1. Place in the waiting room an attractive poster and packages of information calling attention to the enrollment.

2. Include in their October statement a small announcement folder.

3. Familiarize themselves and their office personnel with the details of the enrollment and use such information in encouraging patients to enroll.

4. Do a special mailing to irregular patients to renew contact and to inform them of the special enrollment.

The posters, package kits, and statement folders will be provided to Tulsa County doctors. Staff representatives of the Blue Cross-Blue Shield Plans are planning to call upon as many physicians as possible to secure their cooperation and determine their needs. Any physician needing such material may secure it by

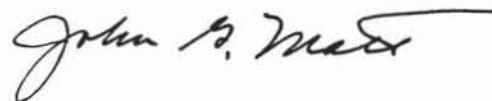
(Continued On Page 26)

PRESIDENT'S PAGE

The private insurance companies, as well as the quasi-public Blue Cross and Blue Shield Plans, are becoming an important part of modern medicine. Most physicians are now receiving a substantial portion of their income in the form of benefits from prepaid hospital and medical care insurance. This has necessarily imposed a closer relationship between the doctor and the insurer, and while the majority of such relationships are cooperative and friendly the occasional frictions do develop. Since the medical profession itself has taken the lead in initiating and encouraging the sale of prepaid hospital and medical care insurance as one of the defenses against state medicine, it is essential that we maintain a friendly liaison with these companies. At the same time this relationship is one which must be kept in proper balance. Both parties would profit through opportunities for medicine and insurance to sit down together for a discussion of mutual problems. This is probably best accomplished on the national level so far as policy is concerned, but our national leaders will look to the grass roots for suggestions and guidance.

The Tulsa County Medical Society is interested in several such problems. One is the desirability of a standard reporting form for health and accident insurance; to this end, the Society has already brought about the appointment of an investigating committee in the Oklahoma State Medical Association and work is progressing on this project. Such a form should greatly reduce the amount and degree of unnecessary reporting which a few insurers demand, and the savings will be reflected in more professional time for our patients. At the same time, the insurance companies will not be penalized in any fashion. A second study which appears indicated is the degree to which the insurance companies are encouraging the hospital practice of medicine by insisting that diagnostic procedures be performed in hospitals alone. Your Board of Trustees feels this is a dangerous trend and is taking steps which, it hopes, will result in a national study of the situation. I shall appreciate your suggestions as to the need for other points of liaison with the insurance world.

Sincerely,



President

THREE MEDICAL EVENTS SET FOR MONTH

Tulsa County Medical Society To Be Guests of Junior League Hospital For Buffet Dinner on September 14th. Internists Schedule Regional Two-State Meeting.

Three outstanding scientific medical events are in store for Tulsa doctors during September, each featuring nationally known medical personalities as visiting distinguished guest speakers.

Following its annual summer recess the Tulsa County Medical Society will resume regular monthly meetings on Monday, September 14, with a special program at the Junior League Children's Hospital featuring Dr. George G. Deaver, Professor of Clinical Rehabilitation and Physical Medicine, New York University, New York, N. Y. On Saturday, September 19, the American College of Physicians will hold a day-long regional meeting at the Mayo Hotel for Arkansas and Oklahoma members and their guests. Concluding the series on Monday, September 28, will be the regular monthly meeting of the Tulsa Academy of General Practice with Dr. J. Milton Singleton, Associate Professor of Obstetrics & Gynecology, University of Kansas School of Medicine, Kansas City, Kansas, as guest speaker.

The September 14th meeting of the Tulsa County Medical Society will provide an opportunity for doctors to inspect an attractive new wing of the Junior League Children's Hospital, 4900 South Lewis Road, Tulsa. Members will be guests of the Society for a complimentary buffet dinner beginning at 6:00 P.M. Hospital personnel will be on duty to escort doctors through the new wing and

demonstrate equipment. An outdoor barbecue is planned and doctors will be served on the Hospital patio, weather permitting. The scientific program will begin at 8:00 P.M.

Dr. George G. Deaver, the speaker of the evening, is recognized as a foremost



DR. GEORGE G. DEAVER

medical authority in the field of physical medicine and rehabilitation. A graduate of the University of Pennsylvania Medical School, Class of 1917, he first entered into this field as a Medical Corps officer in World War I. Following several years as a medical consultant in the Y.M.C.A. in Egypt and Turkey, Dr. Deaver entered practice in Chicago, Illinois, in 1923 and also served as a member of the faculty of George Williams College and later, Northwestern Uni-

versity School of Medicine. In 1933 he joined the faculty of New York University School of Medicine and was appointed to his present position in 1947. He was formerly Medical Director of the Institute for Crippled and Disabled, New York City, and since 1944 has been Physician in Charge of Physical Medicine at Bellevue Hospital of New York. Other appointments include Director of the Cerebral Palsy Clinic of Lenox Hill Hospital, Consultant in Physical Medicine to the Office of the Surgeon General and the Veterans Administration, Physician in Charge of Physical Medicine at Willard Parker Hospital of New York, and Consultant in Physical Medicine at Hacken-

sack General Hospital of Hackensack, N. J.

Dr. Deaver was recipient of the Medical of Merit for War Service in Physical Rehabilitation, awarded in 1948 by President Harry S. Truman. He is a Past-President of the American Academy of Cerebral Palsy, formerly consultant to the National Society For Crippled Children and Adults, and formerly a member of the President's Commission for Employment of the Physically Handicapped. Widely

known for his studies in cerebral palsy and physical rehabilitation, Dr. Deaver will speak on the subject, "Total Treatment for the Handicapped Child." A brief business meeting will follow the scientific program.

Fifteen scientific papers are scheduled for presentation at the 1953 Annual Arkansas-Oklahoma Regional Meeting of the American College of Physicians on Saturday, September 19, 1953. A com-
(Continued On Page 19)

AMERICAN COLLEGE OF PHYSICIANS

Regional Meeting — The Mayo — September 19, 1953

Morning Session

9:00 A.M. Registration, Mezzanine, The Mayo.

9:45 A.M. Governor's Welcome. Wann Langston, M.D., Oklahoma City.

S. C. Shepard, M.D., Tulsa, Chairman.

10:00 A.M. "The Use of 6-Mercaptopurine in Treatment of Leukemia." Vincel Sundgren, M.D., Tulsa.

10:15 A.M. "A Clinical Comparison of Anti-Cholinergic Drugs." Joe H. Hardin, M.D., Little Rock, Arkansas.

10:30 A.M. "Some Aspects of Hodgkin's Disease." John W. DeVore, M.D., Oklahoma City.

10:45 A.M. "Microscopic Studies of the Human Gastric Mucosa in Vivo." Stewart Wolf, M.D., Oklahoma City.

11:00 A.M. Intermission.

A. A. Blair, M.D., Fort Smith, Chairman.

11:15 A.M. Symposium on Control of Diabetics.

"Diabetic Control of Diabetes," Louis Lambiotte, M.D., Fort Smith.

"Vascular Complications Relating to Control of Diabetes," Bert F. Keltz, M.D., Oklahoma City.

"Use of Insulins," Earl I. Mulmed, M.D., Tulsa.

Comments by Edward L. Bortz, M.D., Philadelphia, Pa.

12:15 P.M. "Dissecting Aneurysm: Clinical Picture," Ben T. Galbraith, M.D., McAlester, Okla.

12:30 P.M. Question and Answer Period.

1:00 P.M. Luncheon.

Afternoon Session

Elmer Musick, M.D., Oklahoma City,
Chairman

2:00 P.M. "The Treatment of the More Common Cardiac Emergencies." W. W. Hamilton, M.D., Little Rock.

2:15 P.M. "Clinical Varieties of Hypoparathyroidism." R. Palmer Howard, M.D. and Edward C. Reifenstein, M.D., Oklahoma City.

2:30 P.M. "Modern Management of the Diabetic," Edward L. Bortz, M.D., Philadelphia, Pa.

3:00 P.M. Intermission.

Henry A. Daniels, M.D., Oklahoma City,
Chairman

3:15 P.M. Symposium: Recent Advances in Cardiac Vascular Diseases.

"Clinical Indications for Valvulotomy." Cecil F. Boulden, M.D., Fort Smith, Arkansas.

"Newer Drugs in the Treatment of Hypertension." C. S. Lewis, Jr., M.D., Tulsa.

"Some Practical and Theoretical Considerations in Atherosclerosis," Robert H. Furman, M.D., Oklahoma City.

4:15 P.M. Discussion Period.

Evening Session

6.30 P.M. Social Hour.

7:30 P.M. Dinner (Informal). Wann Langston, M.D., Oklahoma City, Governor for Oklahoma, Presiding. Guest Speaker: Edward L. Bortz, M.D., Regent, College of American Physicians, Philadelphia, Pa.

Office patients do need nutritional support

Analysis of the food habits of office patients, "who present a great variety of less intense ailments . . . offers the greatest therapeutic returns for slight effort."

Strang, J. M.: Pennsylvania M. J. 56:43, 1953.

How Theragran helps office patients

Theragran supplies truly therapeutic dosages of the vitamins almost invariably associated with chronic vitamin deficiency states.



Each THERAGRAN Capsule supplies:

Vitamin A (synthetic)	25,000 U.S.P. Units
Vitamin D	1,000 U.S.P. Units
Thiamine Mononitrate	10 mg.
Riboflavin	5 mg.
Niacinamide	150 mg.
Ascorbic Acid	150 mg.

1 or more Capsules daily

Bottles of 30, 100 and 1000

'Theragran' is a trademark



SQUIBB

THERAGRAN

THERAPEUTIC FORMULA VITAMIN CAPSULES SQUIBB

RURAL HEALTH CONFERENCE SCHEDULED FOR SEPT. 8-9

The First Oklahoma Rural Health Conference, a two-day clinical discussion of problems of rural health in this State, has been scheduled for September 8-9, 1953, at the Skirvin Tower, Oklahoma City. Developed under the aegis of the Public Health Committee of the Oklahoma State Medical Association, the meeting is expected to attract several hundred physicians, public health officials, farm leaders, and governmental officers.

The Conference is similar to those held in many other states in the last several years and is designed to define problems of rural health and to seek satisfactory solutions to such problems. Co-sponsors with the Oklahoma State Medical Association include the Oklahoma Farm Bureau Federation, the Oklahoma State Dental Association, the Oklahoma State Health Department, the Oklahoma Advisory Health Council, the Oklahoma Congress of Parents and Teachers, the Oklahoma Home Demonstration Council, and the extension services of the University of Oklahoma and Oklahoma A. and M. College. A complete program has been mailed to all physicians. There is no registration fee.

Dr. R. M. Wadsworth of Tulsa is Chairman of the Public Health Committee of the Oklahoma State Medical Association.

MENTAL HEALTH GROUP SETS ORGANIZATIONAL MEETING

Interested physicians and lay persons are invited to attend an organizational meeting on September 29, 1953, to establish a Tulsa County Chapter of the Oklahoma Association For Mental Health. The meeting will be at 8:00 P.M. in the Petroleum Science Building of the University of Tulsa.

Dr. Joe E. Tyler will act as temporary Chairman. A discussion of the suggested work and scope of the organization will be inaugurated by Dr. Hayden H. Donahue, Director of Mental Health, Oklahoma State Health Department, Oklahoma City.

The meeting is under the sponsorship

of the Mental Health Committee of the Health Division of the Tulsa Council of Social Agencies in cooperation with the Tulsa County Medical Society, the Tulsa Child Guidance Clinic, the Family and Children's Service, the Tulsa Academy of Neuropsychiatry and Neurosurgery the Tulsa Council of Churches, and the P.-T.A. Council. The public is invited.

WORK PROGRESSES ON TWO NEW MEDICAL BUILDINGS

Approximately 60 per cent of the space in a new 3-story medical building being constructed in Utica Square has already been reserved by Tulsa doctors and dentists, developers of the project reported last month.

Mr. Dale Carter, project official, said the commitments ranged from 500 to 7,000 square feet per doctor. Construction is well under way on the \$1,250,000 structure and is expected to be completed in April, 1954. A total of 49,000 square feet is contained in the building with individual offices being constructed to tenants specifications. Parking accommodations for 400 cars will be available, Carter said, with a special section reserved for physicians. A minimum of 50 doctors and dentists are expected to occupy the new building.

Construction on a rambling one-story medical building in the Ranch Acres development is expected to begin in September. About 20 doctors will be accommodated in a Colorado pink stone structure facing the intersection of 31st and Harvard streets. About 75 per cent of 18,000 square feet of space has been reserved, Builder I. A. Jacobson reported late last month. Off-street parking for 200 cars is planned. Construction will be finished about January 1, 1954.

It's a daughter for DR. and MRS. HERBERT S. ORR, born July 31st. Congratulations!

DR. AVERILL STOWELL has taken new professional quarters at 1151 South Peoria for the practice of Neurosurgery.

DR. JOHN H. DELAMORE has accepted a year's surgical residency at the United States Veterans Administration Hospital, Little Rock, Arkansas.



"PREMARIN"

...*"sense of well-being"*...

Not only relief from menopausal distress but also
"a striking improvement in the sense of well-being"
was reported by all patients on "Premarin" therapy.*

"PREMARIN"® *in the menopause*

Estrogenic Substances (water-soluble) also known as
Conjugated Estrogens (equine). Tablets and liquid.

*Glass, S. J., and Rosenblum, G.: J. Clin. Endocrinol.
3:95 (Feb.) 1943.

"PREMARIN"

"PREMARIN"



AYERST, McKENNA & HARRISON LIMITED • New York, N. Y. • Montreal, Canada

S 310



RHINOPTO'S NEW:

Rhinamin

CAPSULES

afford welcome relief of the annoying symptoms associated with allergic head colds.

A combination of four effective ingredients for the symptomatic relief of nasal congestion, hypersecretion and headache associated with non-seasonal allergies, allergic rhinitis and beginning head colds.



In vials of 12 Capsules

EACH CAPSULE CONTAINS:

- Pyrilamine Maleate 25 mg.
- Ephedrine Sulfate 1/8 gr.
- Atropine Sulfate 1/500 gr.
- Salicylamide 2 1/2 gr.

Detailed to the Medical Profession Exclusively

Ethical Specialties for the Profession

Samples on Request

RHINALL
Nose Drops

RHINALL
Cold Capsules

PYROCAIN
in Acute Otitis Media

RANALENN
for External Otitis and Fungus Infections

BATH-OPTO
Eye Wash Eye Drops (With Ephedrine)

RHINOPTO COMPANY • Dallas 19, Texas

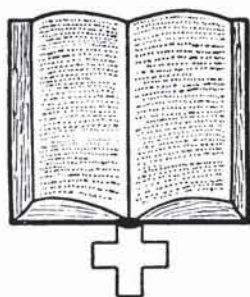


Our modern delivery equipment assures your patients prompt efficient service.

RALEY - SHADDOCK
PRESCRIPTION PHARMACY

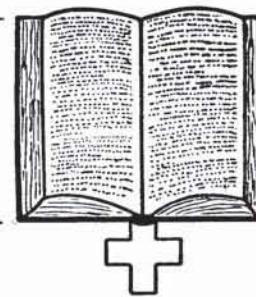
1325 East 15th

Ph. 4-3133



THE MEDICAL LIBRARY

Library of the Tulsa County
Medical Society



Miss Irma A. Beehler, *Librarian*

GIFTS OF THE MONTH—:

- Dr. W. Albert Cook.** American College of Surgeons, 1953 Directory. 649 pp., Chicago, Illinois, 1953.
- Dr. and Mrs. Thomas H. Davis.** A contribution to the Medical Library Fund in memory of Dr. H. Lee Farris.
- Dr. Safety R. First:** The following volumes:
American Journal of Medicine, Volume 16, 1953.
Circulation Research, Volume One, 1953. This is a new journal of the American Heart Association with Carl J. Wiggers, M.D., Editor, and published by Grune & Stratton, New York, N. Y. It began publication in January, 1953, and is issued bi-monthly. The annual subscription charge is \$7.50.
- Dr. Robert E. Funk.** American Medical Association: Disturbances of the Heart; Discussions of the Heart in its Various Disorders. Edited by Oliver T. Osborne, M.D. 216 pp., Chicago, 1913. This little pocket size book was issued in response to popular demand for articles which had previously appeared in the Journal of the American Medical Association.
- Dr. E. O. Johnson.** Obstetrical and Gynecological Survey. Volume Eight, 1953.
- National Nephrosis Foundation, Inc.** Fourth Annual Conference on the Nephrotic Syndrome. Held at Brookhaven National Laboratory, October 2-3, 1952, and the New York Hospital, October 4, 1952. 191 pp., New York, N. Y., 1953.
- United States Veterans Administration, United States Army, United States Navy, with the cooperation of the National Tuberculosis Association.** Transactions of the 12th Conference on the Chemotherapy of Tuberculosis. Held at Fulton County Medical Society, Atlanta, Georgia, February 9-12, 1953. 430 pp., Washington, D. C., 1953.

RECENT ACQUISITION—:

American Medical Association: Quarterly Cumulative Index Medicus. Volume 50, July-December, 1951. 1,558 pp., Chicago, Illinois, 1953. \$20.00 Per Annum.

The Exchange of the Medical Library Association is frequently mentioned on this page and physicians may be interested in a description of its purpose and service.

There has always been an exchange of material among medical libraries in one way or another, but this Exchange is unique. It maintains headquarters in Martinsville, New Jersey, with a salaried manager in charge. Each member library of the Medical Library Association sends lists of duplicate material to the Exchange; such lists must be sent at least once every two years. These are assigned lot numbers and arranged according to the size of the library. A compilation of such offerings are sent to member libraries each month except July and August. Each recipient carefully checks such lists and indicates its wants to the Exchange. The identity of the library offering material is never disclosed (probably to avoid any possibilities of cheating) but a general idea of its location is given so that transportation costs may be considered. No material is ever sold.

The method of allocating material varies in alternate months. One month the duplicates are assigned to the next smaller in size to the offering library, and continues clockwise around the circle. The next month the material is assigned in counter-clockwise fashion with the next larger library in size receiving first choice and so on.

Lists of the items are sent to medical libraries in all parts of the world, and many foreign libraries have been able to acquire material in this fashion that is not otherwise available. Recipient libraries pay transportation charges.

USE YOUR LIBRARY

SEPTEMBER MEDICAL CALENDAR

TUESDAY, September 1st:

St. Johns Tumor Clinic, 8:00 A. M.

WEDNESDAY, September 2nd:

1953 Medical Public Relations Institute, American Medical Association, Drake Hotel, Chicago, Illinois. Continues through September 3rd.

FRIDAY, September 4th:

St. John's Tumor Clinic, Clinical Conference, 8:30 A. M.

MONDAY, September 7th:

The Executive Offices of the Tulsa County Medical Society will be closed in observance of Labor Day. The Hillcrest Hospital Staff Meeting scheduled for this date is postponed to Tuesday, September 8th.

TUESDAY, September 8th:

Hillcrest Hospital Staff Meeting, 8:00 P. M.

First Annual Rural Health Conference, Skirvin Tower Hotel, Oklahoma City, 1:00 P. M. For details see Page 12. Continues through September 9th.

St. Johns Tumor Clinic, 8:00 A. M.

Council Meeting, Oklahoma State Medical Association, Oklahoma City, 10:00 A. M.

FRIDAY, September 11th:

Board of Censors Meeting, Tulsa County Medical Society, B-9 Medical Arts Building, Tulsa, 1:00 P. M.

St. John's Tumor Clinic, Clinical Conference, 8:30 A. M.

MONDAY, September 14th:

Scientific Meeting, Tulsa County Medical Society, Junior League Hospital, 4900 S. Lewis Road, Tulsa. Buffet Dinner, 6:00 P. M. Program, 8:00 P. M. Speaker: George G. Deaver, M.D., New York, N. Y. Subject: "Total Treatment For the Handicapped Child."

TUESDAY, September 15th:

St. Johns Tumor Clinic, 8:00 A. M.

Medical Assistants Society Meeting, Michaelis Cafeteria, 6:30 P. M.

Copy deadline for the October issue of The Bulletin.

WEDNESDAY, September 16th:

Board of Trustees Meeting, Tulsa County Medical Society, B-9 Medical Arts Building, Tulsa, 1:00 P. M.

FRIDAY, September 18th:

St. John's Tumor Clinic, Clinical Conference, 8:30 A. M.

SATURDAY, September 19th:

Regional Meeting, American College of Physicians, The Mayo, Tulsa. For details see pages 9-10.

MONDAY, September 21st:

St. Johns Hospital Staff Meeting: Clinical Pathology Conference, 7:15 P. M.; Staff, 8:00 P.M.

Annual Meeting, Southwestern Surgical Congress, Salt Lake City, Utah. Continues through September 23rd.

TUESDAY, September 22nd:

St. Johns Tumor Clinic, 8:00 A. M.

FRIDAY, September 25th:

St. John's Tumor Clinic, Clinical Conference, 8:30 A. M.

MONDAY, September 28th:

Scientific Meeting, Tulsa Academy of General Practice, Hotel Tulsa, 8:00 P. M. Speaker, J. Milton Singleton, M.D., Assistant Professor of Obstetrics and Gynecology, University of Kansas, Kansas City, Kansas. Subject: "Office Gynecological Practice."

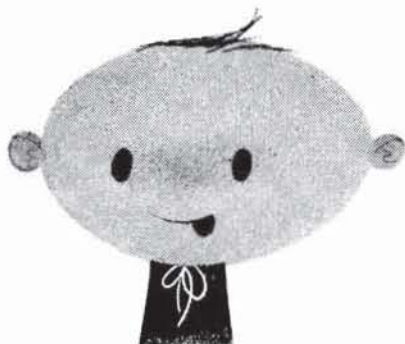
Community Enrollment, Blue Cross-Blue Shield Plans, opens this date and continues through October 10th. For details see Page 7.

TUESDAY, September 29th:

St. Johns Tumor Clinic, 8:00 A. M.

Dates for Tulsa County Medical Society committee meetings are tentative and subject to change. Organizations and hospitals wishing to list their meetings or events in this calendar are invited to call the Executive Secretary, Telephone 4-8161, by the copy deadline date.

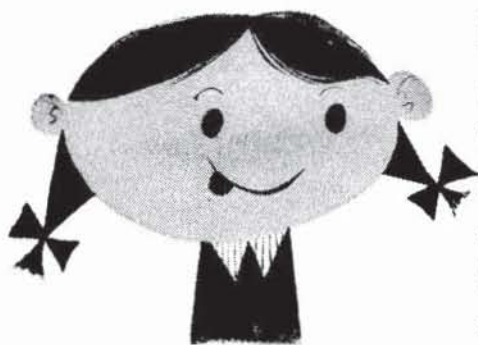
Taste Toppers . . . that's what physicians and patients alike
for all ages call these two favorite dosage forms of



Terramycin because of their unsurpassed good taste. They're nonalcoholic — a treat for patients of all ages, with their pleasant raspberry taste. And they're often the dosage forms of first choice for infants, children and adults of all ages.

Terramycin[®]

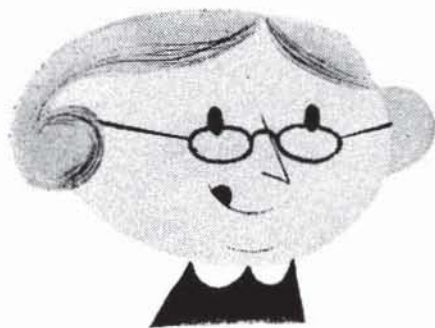
BRAND OF OXYTETRACYCLINE



Pediatric Drops

Each cc. contains 100 mg. of pure crystalline Terramycin. In 10 cc. bottles with special dropper calibrated at 25 mg. and 50 mg. May be administered directly or mixed with nonacidulated foods and liquids. Economical 1.0 gram size often provides the *total dose* required for treatment of infections of average severity in infants.

Supplied: Bottles of 1.0 Gm.



Oral Suspension *(Flavored)*

Each 5 cc. teaspoonful contains 250 mg. of pure crystalline Terramycin. Effective against gram-positive and gram-negative bacteria, including the important coli-aerogenes group, rickettsiae, certain large viruses and protozoa.

Supplied: Bottles of 1.5 Gm.



PFIZER LABORATORIES, Brooklyn 6, N. Y., Division, Chas. Pfizer & Co., Inc.

Prompt Efficient Compounding

Courteous Friendly Service

Modern Delivery Equipment

Citywide Free Delivery

al **MUSICK DRUG**

529 NORTH DENVER

PHONE 5-7288

Serving Tulsa's

North-Side

Prescription Needs

SEPTEMBER PROGRAMS

(Continued From Page 10)

plete program appears on Page 10 of this issue of The Bulletin.

The principal guest speaker will be Dr. Edward L. Bortz, nationally known internist and Regent of the College, Philadelphia, Pennsylvania. He will present a formal paper entitled "Modern Management of the Diabetic" at the afternoon session and will also appear on a symposium on the control of diabetes at the morning meeting. Dr. Bortz is also scheduled as guest speaker at the banquet meeting which will conclude the conference.

The American College of Physicians meeting will be open to all medical doctors of Arkansas and Oklahoma. A registration fee of \$7.50 will include the social hour and dinner.

Tulsans appearing on the program include Dr. S. C. Shepard, Dr. Vincel Sundgren, Dr. Earl I. Mulmed, and Dr. C. S. Lewis, Jr. Arrangements for the meeting are in charge of the Tulsa Chapter of the College with Dr. S. C. Shepard, chairman. All sessions will be at The Mayo.

The Tulsa Academy of General Practice, also resuming after a summer recess, will hear Dr. J. Milton Singleton, Kansas City obstetrician, at its first Fall meeting on Monday, September 28, at Hotel Tulsa. Dinner will be at 6:30 P.M. with the scientific program scheduled for 8:00 P.M.

Dr. Singleton is a graduate of Tulane University Medical School, Class of 1917. He interned at Tuoro Infirmary of New Orleans, served as a Captain in the Army Medical Corps during World War I, and entered practice in Kansas City, Missouri, shortly after his release from service. Rising rapidly to national repute in the field of obstetrics, Dr. Singleton is now Associate Professor of Medicine at the University of Kansas School of Medicine, Kansas City, Kansas, and is a member of the Central Association of Obstetrics and Gynecology, diplomate of the American Board of Obstetrics & Gynecology, fellow of the American College of Surgeons, and member of the Association for the Study of Internal Secretions. His subject will be "Office Gynecological Practice."

All physicians are invited to attend the Tulsa Academy of General Practice



J. MILTON SINGLETON, M.D.

Associate Professor of Obstetrics & Gynecology, University of Kansas School of Medicine, Kansas City, will be guest speaker for the September 28th meeting of the Tulsa Academy of General Practice.

meeting. Dinner reservations should be made by calling 2-5904.

Other Fall speakers for the Tulsa County Medical Society will include:

October 12, 1953. Dr. Henry A. Schroeder, Associate Professor of Internal Medicine, Washington University School of Medicine, St. Louis, Missouri, and a surgeon yet to be selected. This program will be a symposium on the medical and surgical aspects of the diagnosis and treatment of hypertension.

November 9, 1953. Dr. George J. Thomas, Professor of Anesthesiology, University of Pittsburgh School of Medicine, Pittsburgh, Pennsylvania.

Copies of the latest revised roster of the Tulsa County Medical Society are now available at B-9 Medical Arts Building, Tulsa, upon request or by telephoning 4-8161.

NEW APPLICANTS

The following physician has been elected to membership in the Tulsa County Medical Society.

Hugh Burns Spencer, M.D. 2828 East 15th Street, Tulsa. Medical Degree, Indiana University School of Medicine, 1950. Interned Indiana University Medical Center, Indianapolis, Indiana, 1950-51. Resident in Pediatrics, Indiana University Medical Center, 1951-53. Specialty, Pediatrics. By transfer from Indianapolis Medical Society. Recommended by Dr. J. D. Shipp and Dr. Walter F. Sethney.

The following physicians are applicants for membership in the Tulsa County Medical Society.

Charles William Docter, M.D. 1916 South Utica, Tulsa. Medical Degree, Northwestern University School of Medicine, 1945. Interned Detroit Receiving Hospital, Detroit, Michigan, one year. Captain, United States Army Medical Corps, 1945-47. In private practice, Elroy, Wisconsin, 1947-48; Stonewall, Mis-

issippi, 1949-50; Amonate, Virginia, 1950-51. Resident in Orthopedics, Childrens Hospital, Philadelphia, Pennsylvania, 1952. Resident in Surgery and Orthopedics, Chestnut Hill Hospital, Philadelphia, 1953. Specialty, Orthopedic Surgery. Recommended by Dr. Jack L. Richardson and Dr. Samuel Goodman.

Robert Eldon Dillman, M.D. 209 Medical Arts Building, Tulsa. Medical Degree, University of Oklahoma School of Medicine, 1946. Interned United States Naval Hospital, Bremerton, Washington, 1946-47. Lieutenant (J.G.) United States Naval Medical Corps, 1946-49. Resident in Obstetrics & Gynecology, Baptist Memorial Hospital, Memphis, Tennessee, 1949. Resident in Pathology, John Gaston Hospital, Memphis, 1950. Resident in Obstetrics & Gynecology, John Gaston Hospital, University of Tennessee School of Medicine, 1951-53. Specialty, Obstetrics & Gynecology. Recommended by Dr. E. O. Johnson and Dr. Walter B. Sanger.

Gerald Green Robertson, M.D. Douglas Aircraft Company, 608 S. Cincinnati, Tulsa. Medical Degree, University of Arkansas School of Medicine, 1951. Interned Jackson Memorial Hospital, Miami, Florida, one year. In private practice, Dyess, Arkansas, 1952-53. General Practice. Recommended by Dr. Hugh Perry and Dr. Thomas J. Brumfield.

BUTLER DRUG STORE

6528 East King St

Phones

8-1080

8-4097

*A Professional Pharmacy
for Your Convenience
Serving Northeast Tulsa.*

YES, WE DELIVER!

TWO TULSANS TO SPEAK AT SURGICAL GROUP MEETING

Two Tulsa physicians will appear on the scientific program of the Fifth Annual Meeting of the Southwest Surgical Congress at Salt Lake City, Utah, September 21-23, 1953.

Dr. Averill Stowell, Tulsa neurosurgeon, will discuss "The Treatment of Hydrocephalus of Obstructive Type by Ventriculo-Ureterostomy—Presentation of Thirty Cases," and Dr. Gifford H. Henry, Tulsa surgeon, will speak on "Atomic Explosions." A complete program is available in the Medical Library.

All physicians are invited to attend. There will be no registration fee for members of the Congress or of the Southeastern Surgical Congress, residents, interns, and military personnel. The registration fee for others will be \$10.00.

*for the relief of tension
and associated pain and
spasm of smooth muscle*



a threefold action is provided by

Trasentine[®]-Phenobarbital

(Adiphenine Ciba)

- 1.** Phenobarbital provides sedation and eases tension without the greater hypnotic effect of more potent barbiturates.
- 2.** Trasentine relieves gastrointestinal pain by exerting a direct local anesthetic effect on the mucosa.
- 3.** Trasentine relaxes spasm through a papaverine-like effect on smooth muscle and an atropine-like effect on the parasympathetic nerve endings.

Prescribe Trasentine-Phenobarbital for nervous tension and gastrointestinal disorders in which psychosomatic factors are dominant. Each tablet contains 50 mg. Trasentine hydrochloride and 20 mg. phenobarbital. Bottles of 100 and 500.

Ciba

CLINICAL SOCIETY SETS FALL CONFERENCE DATES

The Oklahoma City Clinical Society has announced the dates of its Thirty-Third Annual Fall Conference for October 26-29, 1953, at the Biltmore Hotel, Oklahoma City. Seventeen distinguished guest speakers, including Dr. Edward J. McCormick, President of the American Medical Association, Toledo, Ohio, will be featured on the scientific program.

Hotel accommodations may be made

by contacting the Biltmore or other Oklahoma City hotel directly or by writing the Oklahoma City Clinical Society, 503 Medical Arts Building, Oklahoma City. The registration fee will be \$20.00. More complete details will appear in the October issue of *The Bulletin*.

Vacationers: DR. D. L. GARRETT, in Canada; DR. ROBERT E. FUNK, in Washington, D. C.; and DR. A. RAY WILEY, enjoying the Colorado mountains.

In attendance at the 1953 Medical Public Relations Conference of the American Medical Association in Chicago, September 1-3, were DR. JOHN E. McDONALD, DR. HUGH PERRY, and DR. JAMES STEVENSON.

DR. LAWRENCE A. DENNEY has removed his practice to Coronado, Colorado.

DR. CHARLES E. CALHOUN of Sand Springs has completed fifty years in the practice of medicine. He will be presented with a gold pin commemorating the event at the September 14th meeting of the Tulsa County Medical Society.

DR. MABEL M. HART has removed her practice to Sayre, Oklahoma.

DR. MAXWELL A. JOHNSON will complete his tour of active duty with the United States Army in early September and is expected to return to his Tulsa practice shortly thereafter. Dr. Johnson was recalled to duty last Spring and has been stationed at Chanute Air Field, Rantoul, Illinois.



DICK KELLO

*Invites You To
Patronize His Fine
Prescription Service*

*Free Delivery
Covering East Tulsa*

BALL DRUG STORE

College at Admiral

Ph. 6-2156, 9-9005

read **Pfizer**
Spectrum
weekly in the J.A.M.A.

Be sure to read these features in SEPT. issues of *Spectrum*, appearing in the first section of the

Journal of the American Medical Association

*Lung Abscess • Tumors of the Neck •
Tinea Capitis • Sterility • Dyspnea •
Cardiac Catheterization • Hiatus Hernia*

plus news and views of current medical meetings, reports, photo stories and other material of interest.

Upjohn

mixed surface infections...

Each gram contains 5 mg. neomycin sulfate (equivalent to 3.5 mg. neomycin base).

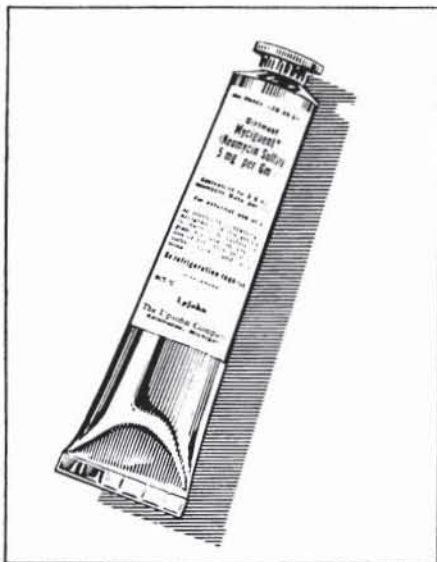
Available: Ointment in 1/2 oz. and 1 oz. tubes, and 4 oz. jars. Cream in 1/2 oz. tubes.

The Upjohn Company, Kalamazoo, Michigan

Myciguent

Trademark Reg. U.S. Pat. Off.

CREAM OR
OINTMENT



ADMIRAL PHARMACY

Admiral at Peoria

Prescription Druggists

James E. Lovell

James F. Purdy

Telephone Us Your

Prescriptions

Ethically Compounded

Free Delivery

TELEPHONE 2-5136

28 Years Same Location

Brookside PRESCRIPTION SHOP

Verle C. Smtih

●
*For The Best In
Prompt Prescription
Service
And Sickroom Needs*

●
3409 SOUTH PEORIA
Delivery, Of Course

TELEPHONE 7-3387

BLOOD CENTER NEWS

DISTRIBUTION & REPLACEMENT REPORT

July, 1953

	Bloods Used:	Replac- ments:	% Repl.
St. John's	528½	312	59.04%
Hillcrest	316½	196	61.96%
Osteopathic	66	30	42.39%
Byrne	16	8	50.00%
Mercy	22	5	22.74%
Tulsa Osteo.	7	0	00.00%
Moton	6	4	66.66%
Broken Arrow	8	7	87.50%
Other	23	5	21.74%
Totals	993	567	57.10%

Blood donations at the Tulsa County Red Cross Blood Center continue to run well ahead of last year. At the end of the first seven months of 1953, total donations had reached 6,605, an increase of 555 pints over the same period last year.

Rejection of donors, primarily for medical reasons, has taken a sharp turn upward with 1,225 persons rejected during the first seven months of 1953 as against only 571 last year.

The number of replacement donors has fallen, however, with only 2,920 replacement donations recorded through August 1st as against 3,459 for the same period last year. The bulk of donations this year comes from the organized recruitment program among firms and organizations, and from casual drop-in donors. This latter figure, due in part to a concerted national campaign encouraging blood donations, has risen from 1,231 for the first seven months of 1952 to 1,627 for the same period this year. Repeat donations (by persons who have given blood before) are also increasing with the comparative seven-month figure rising from 3,299 in 1952 to 3,739 this year.

On the basis of present indications the total blood donation for 1953 should well exceed 10,000 pints for the twelve-month period. Utilization of blood during the first seven months of 1953 has risen at virtually all participating hospitals except St. Johns' Hospital (a decrease of 252 pints) and Byrne Memorial Hospital.

Going Somewhere? Travel Refreshed



DRINK
Coca-Cola 5¢

REG. U.S. PAT. OFF.

BOTTLED UNDER AUTHORITY OF THE COCA COLA COMPANY BY



*The best in prescription service. Convenient free parking.
Prompt free delivery. Summer Hours: 9:00 A.M. to 9:00 P.M.
Monday Through Saturday; Sundays 12:00 Noon to 6:00 P.M.*

LARRY ENGLERT PRESCRIPTIONS, INC.

Burnie L. Bevill, Manager

2526 East Admiral Pl.

Ph. 9-7736, 9-7743

North and West

13TH AND MAIN

Telephone 4-3103

SCOTT ROBISON'S

Service

**PRESCRIPTION
STORES**

15TH AND LEWIS

Telephone 9-6393

South and East

HARVARD DRUG STORE

B. C. SHINN, Owner

PHONE 6-2186

*The
Suburban
Prescription
Store*

FREE
PRESCRIPTION
DELIVERY
3244 E. 11th St.
Tulsa

BLUE CROSS ENROLLMENT

(Continued From Page 7)

calling the Tulsa County Medical Society, telephone 4-8161.

The enrollment campaign will also utilize newspapers (both news stories and advertisements), radio and television announcements, posters, and giveaway literature.

Physicians, dentists, and persons employed by physicians and dentists who wish to apply for admission to the Physicians & Surgeons and Medical Assistants groups may obtain enrollment cards at the Tulsa County Medical Society offices, B-9 Medical Arts Building, Tulsa, or by telephoning 4-8161. New enrollees will be billed on or before November 1st for an amount of premium sufficient to bring him into line with the rest of the group. The Physicians & Surgeons Group is on a semi-annual premium payment basis, and the Medical Assistant Group on a quarterly basis.

A similar community enrollment was conducted earlier this year in Oklahoma City, and such enrollments have been extensively used in many of the State's smaller cities.

DR. FRANK J. NELSON will be Chairman of the Doctors Division for the 1954 Community Chest-Red Cross Drive to be conducted in Tulsa in October.

DR. WALTER H. CALHOUN has moved into an attractive new clinic building located at 5323 South Lewis.

DR. HOWARD M. COHENOUR has taken new professional offices at 1104 Medical Arts Building for the practice of Urology.

DR. JOHN F. GRAY, JR. has returned from a business trip to Hartford, Connecticut.

DR. JACK O. AKINS has been vacationing in Minneapolis and in Northern Minnesota, where he enjoyed several days of fishing. Dr. Akins has been reappointed for another year as Chairman of the local advisory committee to the Oklahoma Volunteer Advisory Committee, official medical military advisors to Selective Service System.



No, doctor, they're not **all** alike...

Combined Vaccines differ, too.

Only Cutter **Dip-Pert-Tet Alhydrox**[®] gives you all these advantages:

Alhydrox adsorption. Alhydrox (aluminum hydroxide adbed) is a Cutter exclusive that prolongs the antigenic stimulus by releasing the antigens slowly in the tissues to build more durable immunity.

Maximum immunity against diphtheria, pertussis and tetanus with uniformly superior antitoxin levels.

Fewer local and systemic reactions in infants because of improved purification and Alhydrox adsorption.

▶ **High pertussis count** — 45 billion Phase 1 H. pertussis organisms per immunization course.

▶ **Standard Dosage** — 0.5 cc. per injection, only three injections.

Supplied in 1.5 cc. vials and 7.5 cc. vials. Also available: famous purified Dip-Pert-Tet Plain — a product of choice for immunizing older children and adults.

Try it, compare it! You'll see why there is only one **Dip-Pert-Tet**



CUTTER Laboratories

BERKELEY, CALIFORNIA



Representative: Hubert Fraker, 2128 Churchill Way, Oklahoma City, Ph. 8-4050

Telephone Your Prescriptions—

*For Prompt And
Accurate Compounding
By Reliable Licensed
Pharmacists*

Free Delivery

Telephone 7-7519

BROOKSIDE DRUG STORE

3348 South Peoria

ST. JOHN'S HOSPITAL

*A Leading
Institution*

In

*Oklahoma
Medicine*

1923 SOUTH UTICA
TULSA, OKLAHOMA

TELEPHONE

7-3361

MEDICAL SERVICE SOCIETY OF AMERICA

Membership Roster, Tulsa Chapter

<i>Name:</i>	<i>Representing:</i>	<i>Telephone:</i>
L. T. Baker	Ciba	5-9003
Bill Brittan	A. H. Robins Co.	7-5414
William A. Cates	E. R. Squibb Co.	7-1267
O. C. Chapman	Merck & Company	3-0654
Joe F. Chappell	Kremers-Urban Co.	3-5237
C. R. Doran	Lakeside	Claremore
R. C. Gooch	Abbott Laboratories	9-4389
J. L. Hedges	S. E. Massengill Co.	6-8538
E. C. Jeep	Lederle Laboratories	72-4365
C. M. (Mike) Kelly	National Drug Co.	2-0015
A. L. Kessler	Pitman-Moore Co.	7-0227
Dorwin Lamkin	Upjohn	7-1668
Kyle Lloyd	Wyeth, Inc.	5-1882
Frank Lupsha	Bauer & Black	3-6212
Ralph L. Miller	Hoffman-LaRoche	7-1878
A. M. Sayles	E. R. Squibb & Co.	72-1646
Tom Sellers	G. D. Searle	9-7361
J. E. Southerland	J. B. Roerig & Co.	4-6707
Cecil Treadway	Wyeth, Inc.	9-0075
Bill Walker	Parke-Davis	9-0815
Preston Walker	Upjohn	7-6464
William A. Wilson	Baxter Laboratories	8-3846
H. L. (Jack) Wood	Winthrop-Stearns	3-3825



The Emblem Of Approval

Owned and operated by the Tulsa County Medical Society, the Medical Credit Bureau offers an efficient reliable collection service at cost. More than 135 Tulsa doctors and dentists attest to its discreet collection abilities.

MEDICAL CREDIT BUREAU

Official Collection Agency of The Tulsa County Medical Society

B-9 Medical Arts Building

Telephone 3-6331

Prescription Excellence

Our reputation for the best in prescription compounding is your guarantee of reliable, courteous, and attractively priced service for your patient. We use only the finest in modern fresh drugs and insist upon individual attention to every prescription by our registered pharmacists. For prompt service just telephone 72-2469.

PROFESSIONAL DRUG SHOP

2110 South Utica

D. L. KINCAID
(Kinney)

FREE DELIVERY

RAYMOND EWERS

SPECIAL PURPOSE FOODS

LOW-SODIUM FOODS

LOW-CALORIE FOODS

DIABETIC FOODS

Phone 3-1106

Akin's

718 S. Boulder

Helpful Handouts While They Wait

"Feeding Little Folks"

Booklet — how to bring children and foods together happily

"Growing Up"

Booklet — proper food and health habits for children

"Do Your Children Have a Healthful Day?"

Leaflet — your child's day, right and wrong story

"Eating Is For Everybody"

Booklet — persuades men and women to pay more attention to what they eat

Obtained Free From

DAIRY COUNCIL OF TULSA

312 Wright Building

Tulsa 3, Oklahoma

Phone 4-8280

Be Certain with Curtain

CURTAINS PRESCRIPTION LABORATORY

SIXTH AND BOULDER

PHONE 4-7116

Across the Street North From Medical Arts Bldg.

*Two fine prescription
pharmacies to serve you*

NO. ONE
603 S. BOULDER
TELEPHONE
2-3118

NO. TWO
44 N. HARVARD
TELEPHONE
6-1111

T. ROY BARNES
D R U G R Y

Your Guarantee of Reliable Prescription Service

Hear "Tell Me, Doctor" daily Monday through Friday, Radio Station KTUL, 5:15 P.M., sponsored by the Oklahoma State Medical Association in cooperation with Getman Drug Store.

Professional Directory

S. Y. ANDELMAN, M.D.
Diagnosis & Treatment of
Arthritis & Rheumatic Diseases
1611 South Boston Ph. 2-3885

MANUEL BROWN, M. D.
Allergic Diseases
1619 E. 15th Street Ph. 54-5552

WILLIAM M. BENZING, JR., M.D.
Diplomate American Board of Radiology
302 Medical Arts Bldg. Ph. 3-3044

EMIL M. CHILDERS, M.D.
General Surgery
201 Stanolind Bldg. Ph. 2-5143

BERGET H. BLOCKSOM, M. D.
MAXWELL A. JOHNSON, M. D.
Urologists
Diplomates, American Board of Urology
517 Medical Arts Bld. Ph. 54-1888

**FOR LISTINGS IN THIS
PROFESSIONAL DIRECTORY**
Telephone 4-8161

Professional Directory

EUGENE S. COHEN, M.D.

Obstetrics & Gynecology

1239 East 36th Pl. Ph. 7-7703

HARRY GREEN, M.D.

Diseases of the Skin
X-Ray & Radium Therapy

311 Medical Arts Bldg. Ph. 4-7585

SAMUEL E. FRANKLIN, M. D.

General Surgery

1619 E. 15th Street Ph. 3-2109

MARSHALL O. HART, M.D.

General Practice

1228 South Boulder Ph. 2-5904

ROBERT E. FUNK, M.D.

Practice Limited to Internal Medicine

212 Medical Arts Bldg. Tulsa

JAMES W. KELLEY, M.D., F.A.C.S.

Plastic and Reconstructive Surgery
Diplomate, American Board
Of Plastic Surgery

206 Philtower Bldg. Tulsa

JOHN F. GRAY, JR., M.D.

Neuropsychiatry

506 Medical Arts Bldg. Ph. 2-7039

WALTER S. LARRABEE, M.D.

X-Ray Diagnosis & Therapy
Radium Therapy

411 Medical Arts Bldg. Ph. 4-3111

SPRINGER CLINIC

Sixth and Cincinnati

Tulsa

Telephone 5-6621

Medicine

D. O. Smith, M.D.
E. G. Hyatt, M.D.
H. A. Ruprecht, M.D.
Albert W. Wallace, M.D.
Vincel Sundgren, M.D.
Dean C. Walker, M.D.
Thomas H. Fair, M.D.
Ernest W. Reynolds, Jr., M.D.

General Surgery

Carl J. Hotz, M.D.
William Pratt, M.D.

Urology

K. F. Swanson, M.D.
William F. Boyer, M.D.

Neurology and Psychiatry

Tom R. Turner, M.D.
Joe E. Tyler, M.D.

**Ear, Nose and Throat
and Plastic Surgery**

Donald L. Mishler, M.D.

Neurosurgery

Robert A. Hayne, M.D.

Orthopedic Surgery

Charles E. Brighton, M.D.

Pediatrics

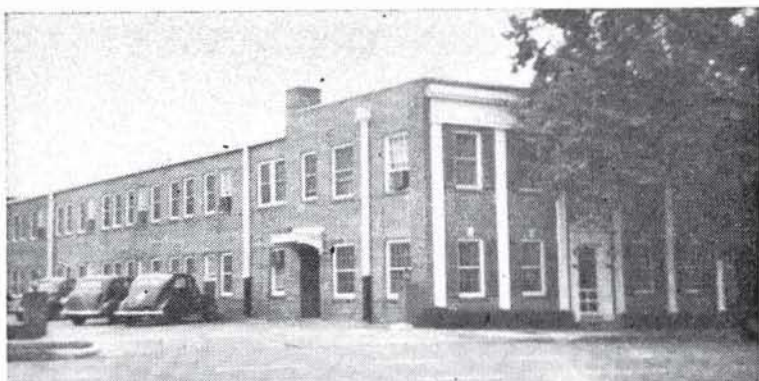
G. R. Russell, M.D.

Anesthesia

M. R. Steel, M.D.

Professional Directory

<p style="text-align: center;">MARION K. LEDBETTER, M.D. Pediatrics 1453 S. Quaker Ph. 3-4332</p>	<p style="text-align: center;">VANCE LUCAS, M. D. Thoracic and General Surgery Diplomate, American Board of Surgery and Board of Thoracic Surgery Medical Arts Building Ph. 3-5513</p>
<p style="text-align: center;">MARTIN LEIBOVITZ, M.D. Thoracic and Cardiovascular Surgery Certified American Board of Surgery and Board of Thoracic Surgery 812 Medical Arts Building Ph. 3-8722</p>	<p style="text-align: center;">JAMES D. MARKLAND, M.D. Allergy 411 Medical Arts Bldg. Ph. 4-3111</p>
<p style="text-align: center;">C. S. LEWIS, JR., M.D. Internal Medicine 501 Medical Arts Bldg. Ph. 54-2778</p>	<p style="text-align: center;">RALPH A. MCGILL, M.D., F.A.C.S. Surgery-Radium 1010 Medical Arts Bldg. Ph. 4-4215</p>
<p style="text-align: center;">E. N. LUBIN, M.D. Diplomate, American Board of Urology Genito-Urinary Diseases 303 Medical Arts Bldg. Office Ph. 3-6008 Res. Ph. 7-4388</p>	<p style="text-align: center;">EDWARD L. MOORE, M.D., F.A.C.S. Surgery Diplomate, American Board of Surgery 215 Braniff Bldg. Ph. 3-4789 Res. Ph. 7-1623</p>



TULSA CLINIC

915 South Cincinnati

Surgery
Andre B. Carney, M.D.,
F.I.C.S., F.A.C.S.
James H. Neal, Jr., M.D.

Medicine
H. W. Ford, M.D.

Cardiology and
Internal Medicine
James C. Peters, M.D.

COMPLETE
CLINIC
FACILITIES

Telephone 4-0177

Miss Bettye Adams
Director

Neurology and
Internal Medicine
O. L. Hill, M.D.

X-Ray and
Gastro-enterology
Earl M. Lusk, M.D.

Internal Medicine
Craig S. Jones, M.D.

Dentistry
J. Thurman Gamble, D.D.S.

Professional Directory

<p style="text-align: center;">IRON H. NELSON, M.D. Clinical and Surgical Pathology 1107 Medical Arts Bldg. Tulsa</p>	<p style="text-align: center;">W. A. SHOWMAN, M.D. Dermatology 408 Medical Arts Bldg. Ph. 3-7789</p>
<p style="text-align: center;">MARQUE O. NELSON, M.D. Practice Limited to Dermatology Radium and X-Ray Therapy 510 Medical Arts Bldg. Tulsa</p>	<p style="text-align: center;">WADE SISLER, M.D. Orthopedic Surgery 8th & Elgin Ph. 5-3123</p>
<p style="text-align: center;">L. C. NORTHRUP, M.D., F.I.C.S. Gynecology & Obstetrics 1307 S. Main Ph. 3-0151</p>	<p style="text-align: center;">CHARLES G. STUARD, M.D. Ophthalmology 221 Court Arcade Bldg. Ph. 4-3435</p>
<p style="text-align: center;">THE ORTHOPEDIC CLINIC 619 South Main Street Tulsa Practice Limited To Bone & Joint Surgery</p> <p style="text-align: center;">JOHN E. McDONALD, M.D. FRANK A. STUART, M.D. JOHN C. DAGUE, M.D. SAMUEL L. FRENCH, M.D.</p>	<p style="text-align: center;">LEON H. STUART, M.D., F.A.C.R. X-Ray Diagnosis 1107 Medical Arts Bldg. Ph. 54-5348</p>
<p style="text-align: center;">SIMON POLLACK, M.D., D.A.B.R. Diagnostic and Therapeutic Radiology 316 Braniff Bldg. Ph. 2-7517</p>	<p style="text-align: center;">SAFETY R. FIRST, M.D., F.A.C.C. Cardiology & Electrocardiology 1011 Medical Arts Bldg. Ph. 5-7545</p>
<p style="text-align: center;">HERSCHEL J. RUBIN, M.D. LEONARD L. KISHNER, M.D. Diplomates, American Board of Pediatrics Diseases of Infants & Children 1916 South Utica Tulsa</p>	<p style="text-align: center;">ARNOLD H. UNGERMAN, M.D. MILFORD S. UNGERMAN, M.D. Diagnosis & Treatment of Nervous and Mental Diseases 404 Medical Arts Bldg. Ph. 2-3151</p>
<p style="text-align: center;">MAURICE J. SEARLE, M.D. Pediatrics Diplomate, American Board of Pediatrics 512 Medical Arts Bldg. Tulsa</p>	<p style="text-align: center;">R. M. WADSWORTH, M.D. Pediatrics 1445 S. Quaker Ph. 3-4300</p>
<p style="text-align: center;">J. D. SHIPP, M.D. Surgery and Diseases of the Colon and Rectum 708 Medical Arts Bldg. Tulsa</p>	<p style="text-align: center;">J. E. WALLACE, M.D. Gynecology 1328 S. Peoria Ph. 3-2383</p>



WE RECOMMEND
Meadow Gold
HI-VITA-MIN
MILK

EACH QUART CONTAINS:

VITAMIN A	4000 USP UNITS
VITAMIN B-1	1 MGM
VITAMIN B-2	2 MGM
NIACIN	10 MGM
VITAMIN D	400 USP UNITS
IRON	10 MGM
IODINE	0.1 MGM

215 N. DENVER

Beatrice Foods Co.

PHONE 4-2471

DOCTOR,
May We Help YOU?

The Visiting Nurse Service can
 save your valuable time!

Nursing care given *only* under
 physician's directions!

All citizens of Tulsa County benefit and may pay according
 to their ability. Maximum fee of \$2.50 per nursing visit.

Call Your Public Health Association — 5-3238

Tulsa County Medical Society
B-9 Medical Arts Building
Tulsa 3, Oklahoma

Sec. 34.66 P. L. & R.

U. S. POSTAGE

PAID

TULSA 3, OKLA.

PERMIT No. 13

(Return Postage Guaranteed)



*For Quality Printing of
Your Professional Needs*

CONSULT R. W. (BOB) HUDSON

COMMERCIAL PRINTING COMPANY

417 EAST THIRD ST. ● TELEPHONE 2-2450

Oklahoma's Finest One-Stop Service

Physicians and Hospital Equipment and Supplies

X-Ray Apparatus and Accessories

Fully Modernized Facilities

**MID-CONTINENT
SURGICAL SUPPLY CO.**

Telephone 2-8169
1330 SOUTH BOSTON
TULSA

MERKEL X-RAY CO.

Telephone 2-4897
1330 SOUTH BOSTON
TULSA

OKLAHOMA CITY — 21 BROADWAY CIRCLE