

MAY 28 1953

LIBRARY  
TULSA COUNTY MEDICAL SOCIETY

June, 1953

# THE BULLETIN

*of the Tulsa County Medical Society*

## ***IN THIS ISSUE***

An Analysis Of The 1952 Annual Reports  
Of The Oklahoma Blue Cross-Blue Shield Plans



Recent Committee Activities



A Guest Editorial By Mr. Rush Greenslade,  
Prominent Tulsa Civic and Red Cross Leader



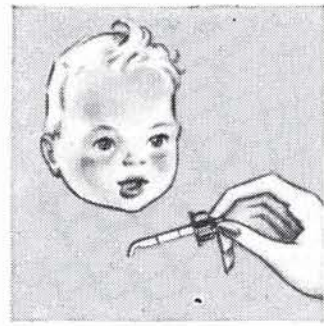
Medical Library Expands

Vol. 19

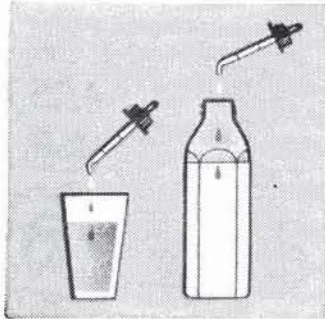
No. 6



superior flavor  
 Pleasant-tasting. No disagreeable aftertaste. Readily accepted without coaxing.



## on every count



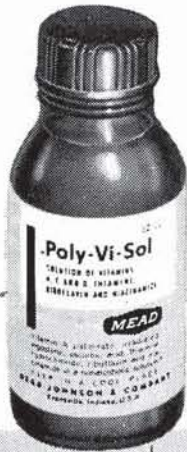
superior miscibility  
 Disperse readily in formula, fruit juice or water. Mix well with cereals, puddings or strained fruits.

superior convenience  
 Light, clear and non-sticky. Can be accurately measured and easily administered. No mixing necessary.



## superior vitamin supplements for infants...

superior stability  
 Require no refrigeration. May safely be autoclaved with the formula.



# Poly-Vi-Sol



MEAD JOHNSON & COMPANY  
 Evansville 21, Ind., U.S.A.

	Vitamin A	Vitamin D	Ascorbic Acid	Thiamine	Riboflavin	Niacinamide
<b>POLY-VI-SOL</b> Each 0.6 cc. supplies	5000 units	1000 units	50 mg.	1 mg.	0.8 mg.	6 mg.
<b>TRI-VI-SOL</b> Each 0.6 cc. supplies	5000 units	1000 units	50 mg.			
<b>CE-VI-SOL</b> Each 0.5 cc. supplies			50 mg.			

All vitamins are in synthetic (hypoallergenic) form.



Local Representative: J. D. Parks, 2737 N. W. 25th, Oklahoma City, Okla., 92-1369

76.6% of patients

preferred

# EURAX<sup>®</sup> CREAM...

for  
relief  
of  
pruritus

In a recent study<sup>1</sup> of 200 cases of itching dermatoses, 76.6% of all patients who had had previous experience with other antipruritics expressed a preference for EURAX Cream.

In this study, as in previous reports<sup>2-5</sup>, EURAX Cream produced complete relief of itching in approximately 65 per cent of cases, and partial relief in most of the remainder.

**Other favorable features of EURAX Cream that were again confirmed include:**

- ✓ *Prolonged effect lasting up to 8 hours or more.*
- ✓ *No loss of effect on continued use.*
- ✓ *Virtually complete lack of sensitizing or toxic properties.*

EURAX... not an antihistaminic or a -caine derivative... is indicated for prompt, prolonged relief of itch in practically all forms of dermatosis including pruritus due to administration of antibiotics.

EURAX Cream\* (brand of crotamiton cream) contains 10% N-ethyl-o-crotonotoluide in a vanishing-cream base. Tubes of 20 Gm. and 60 Gm. and jars of 1 lb. at your local pharmacy.

## Bibliography

1. Hitch, J. M.: North Carolina M. J. 12:548, 1951.
  2. Peck, S. M., and Michelfelder, T. J.: New York State J. Med. 50:1934, 1950.
  3. Couperus, M.: J. Invest. Dermat. 13:35, 1949.
  4. Soifer, A.: Quart. Rev. Int. Med. & Dermat. 8:1, 1951.
  5. Johnson, S. M., and Bringe, J. W.: Arch. Dermat. & Syph. 63:768, 1951.
- \*U.S. Pat. #2,505,681.

*Samples and Reprints on Request*



GEIGY PHARMACEUTICALS  
Division of Geigy Co., Inc.  
220 Church St., New York 13, N. Y.

*Prompt Efficient Compounding*

*Courteous Friendly Service*

*Modern Delivery Equipment*

*Citywide Free Delivery*

*AL* **MUSICK DRUG**

**529 NORTH DENVER**

**PHONE 5-7288**

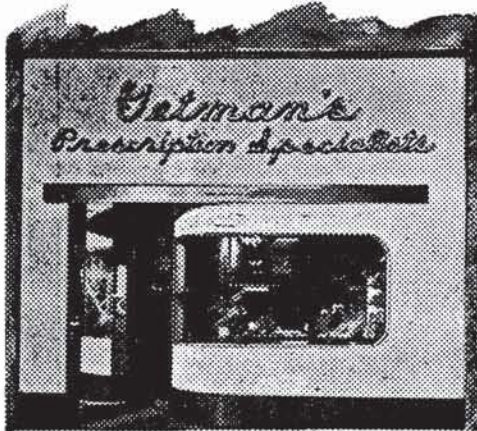
*Serving Tulsa's*

*North-Side*

*Prescription Needs*

# GETMAN'S

ROY R. GETMAN, Founder



Store Number One  
MAIN & 6TH  
Telephone 3-6171

Store Number Two  
4606 EAST 11TH  
Telephone 9-5233

*As Near To You  
As Your Telephone*

## "DEPENDABILITY"

You may depend upon us to carry out the orders on your prescriptions explicitly and, if you desire, make prompt delivery to the patient's home.

FREE DELIVERY NIGHT AND DAY.

WE GIVE S & H GREEN STAMPS

Sponsors of the "Tell Me, Doctor" Radio Broadcasts at 5:15 P.M. each Monday through Friday, KTUL, prepared by The Oklahoma State Medical Association.

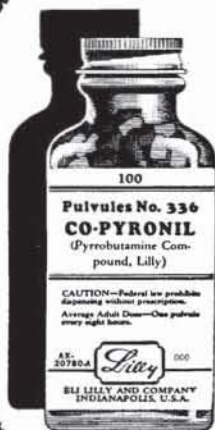
## With The Editor . . .

Mr. Lawrence W. Rember, Field Director of the American Medical Association, paid the Tulsa County Medical Society a visit last May 4th . . . There's food for thought in his observation to the Board of Trustees that there has been far from a complete change in Washington . . . With two million Roosevelt and Truman jobholders still under Civil Service, the few changes in personnel that have been made are in some 200 top appointees . . . With the employed government worker yearning for the old days of free spending, increasing job divisions, and less public eye on government activities, the situation is fraught with possibilities, says Rember . . . Such a body of voters could very well swing the 1956 elections back to the Democrats . . . How well the Republicans can control this inheritance from the Roosevelt-Truman regimes is an important factor . . . Advises Rember: strengthen public relations, cultivate labor, publicize medical society activities and professional talents . . . Contrary to many views, the action of the Oklahoma House of Delegates in calling for evidence of Dr. Paul Hawley's charges is good positive public relations, says Rember . . . Better to combat false charges than to sit silently by—a point of heated debate among many doctors . . . Incidentally, Larry married Muriel R. Waller, Executive Secretary of the Oklahoma County Medical Society for the last several years, on May 1st. Congratulations! . . . Tulsa area Masonic lodges are said to be in the talking stage of plans to construct a Masonic Hospital here . . . Reports say the group is thinking in terms of a 100-bed institution with plans for expansion in later years . . . Plans for the formal opening in September of the new wing on the Junior League Hospital are in the making . . . 1952 Annual Report of the Tulsa City-County Health Department, published last month, is an interesting account of the Department's progressive program . . . A copy has been filed in the Medical Library.

# IN ANY ALLERGY

'Co-Pyronil' \*

affords  
more profound,  
more prolonged  
relief with  
fewer side-effects  
than any other  
known  
antihistaminic.



\*'Co-Pyronil' (Pyrrobutamine Compound, Lilly)

#### *Dosage*

Mild symptoms: 1 pulvule every twelve hours.

Moderate symptoms: 1 pulvule every eight hours.

Severe symptoms: 2 pulvules every eight hours.

*Lilly*

# THE BULLETIN

OF THE

## TULSA COUNTY MEDICAL SOCIETY

John G. Matt, M.D., *President*W. D. Hoover, M.D., *President-Elect*Logan A. Spann, M.D., *Vice-President*W. R. Turnbow, M.D., *Secretary-Treasurer*Jack Spears, *Executive Secretary*

Vol. 19

TULSA, OKLAHOMA, JUNE, 1953

No. 6

## BLUE CROSS ENROLLMENT DECLINES

**Tulsa Doctors Collect More Than Half-Million Dollars in Blue Shield Plan Benefits. Women Patients Predominate In Utilization of Protection.**

Members of the Tulsa County Medical Society collected \$616,802.32 from the Blue Shield Plan of Oklahoma in 1952, a study of the annual report of the pre-paid surgical and maternity care service indicates. This sum represented 47 per cent of the total charges made by Tulsa County doctors for the services rendered. Total Blue Shield payments for the State of Oklahoma were \$1,879,840.04 or almost two million dollars.

A breakdown of the Blue Shield payments to Tulsa County doctors indicates \$503,214.82 was paid for surgical and maternity care benefits, \$73,120.50 for anesthetics and x-rays by physicians, and \$40,467.00 for limited medical care benefits. The Plan paid 52.5 per cent of the total surgical and maternity fees charged by participating physicians, 44.1 per cent of x-ray and anesthesia charges, and 45.3 per cent of medical fees. For the State as a whole the Plan paid 58.6 per cent of surgical and maternity fees, 52.7 per cent of anesthesia and x-ray charges, and 48.3 per cent of medical charges. In comparison with other counties Tulsa County fees would appear to be slightly higher. However, consideration must be given to the fact that enrollment in Tulsa County is very heavy while enrollment in many counties is very light, thus giving undue significance to a comparatively small number of cases considered in the individual statistics.

The Blue Cross Plan of Oklahoma, parent hospital service plan to the Blue Shield, reported in its annual report for 1952, issued May 1st, that Tulsa County

hospitals were paid \$1,344,949.68 for services rendered to members during the year. This sum represents about 30 per cent of the total payments of \$4,243,003.60 over the State of Oklahoma as a whole. Utilization of premium income in Tulsa County ran 94.5 per cent against a State average of 87.3 per cent.

On a more serious note, membership in the Blue Cross Plan for 1952 dipped slightly to 375,280 participants, a decline of 8,449 from the all-time high recorded in 1951. It was the first time in the 13-year history of the hospital service plan that total membership had fallen. The Blue Shield Plan made its smallest net growth since 1937 with a net increase of 14,160 members. Both the decline in Blue Cross enrollment and the comparatively small increase in Blue Shield were attributed by Mr. N. D. Helland, Executive Director, to increases in dues and to other important changes in benefits made in mid-year. Most serious of the latter was a regulation requiring high utilization groups to pay a portion (\$3.00) of the cost of each day's hospitalization. Of some 300 groups in this classification over the State, 89 had voluntarily reduced their utilization by the year's end to the point where they could be returned to the standard benefits. However, this was offset in considerable measure by the addition of 72 new groups in the high utilization bracket.

The Blue Cross Plan, in particular, showed a marked improvement in its financial structure, and both Plans were in sound economic shape at the end of

the year. Operating expense for Blue Cross fell to a record low of 7.7 per cent of the premium dollar, compared to 9.3 per cent for last year. Of the balance, 89.2 per cent went for utilization of benefits and 3.1 per cent to an operating reserve.

A total of 60,754 cases were handled by Blue Cross in 1952 at an average cost per case of \$69.99. This represents 348,485 patient days, an average of 5.7 days per case at an average per day cost of \$12.20. These figures are for both member and non-member hospitals.

Due to the changes in dues and benefits, the average income per participant rose from \$11.35 in 1951 to \$12.92 last year.

High rates of utilization of Blue Cross continued to be a problem with 18 Oklahoma counties utilizing more than 100 per cent of income. While many of these were low enrollment areas, others were not and indicate an abnormal condition.

The greatest number of Blue Cross cases by diagnostic groups fell, in order, to diseases of the respiratory system, injuries and poisonings, diseases of the digestive system, and pregnancy with delivery. The most costly were those dealing with diseases of the digestive system. The latter also accounted for the greatest number of patient days, followed by pregnancy and delivery and diseases of the respiratory system in that order.

Women patients were, by far, the greatest users of Blue Cross benefits. Of the total patient days, women accounted for

43.5 per cent plus another 15.5 per cent for obstetrical care, or a total of 59 per cent. (32.4 per cent of Blue Cross members are women.) Men patients accounted for 22.9 per cent of the total patient days, minor females 10 per cent, and minor males 8.1 per cent. Persons under 21 years of age utilized 20.6 per cent of the total utilization, persons 21 to 25 years of age 9.7 per cent, and persons 26 to 30 years of age 11.2 per cent. From that point the utilization declines steadily as age advances.

Tulsa County now has 118,020 members in Blue Cross or 47 per cent of the population; Blue Shield membership is 92,920 for the County or 37.4 per cent of the population.

#### **SPECIAL ASSESSMENT OF \$20.00 APPROVED BY SOCIETY**

A special assessment of \$20.00 to establish a building fund was approved at the regular meeting of the Tulsa County Medical Society on May 11, 1953. The assessments will apply only to 1953. Members in special dues classifications, life and honorary members, and military members will be exempt. As this issue of The Bulletin went to press, regulations governing collection had not been prescribed by the Board of Trustees. Complete details will appear in the next issue.

The membership also approved a constitutional amendment giving the Board of Trustees the right to elect applicants to membership during the summer recess of the Society. Such applicants must pass the Board of Censors, have their application published in The Bulletin, and receive a unanimous vote of the Board of Trustees.

#### **REREGISTRATION FEE DUE**

All Oklahoma doctors are required to renew their certificate of licensure by payment of the Annual Reregistration Fee of \$3.00 to the Oklahoma State Board of Medical Examiners on or before June 10, 1953. Each physician will receive instructions concerning payment from the State Board of Medical Examiners. Payment of the Annual Reregistration Fee is a requirement of Oklahoma statutory law, and failure to comply makes the offender liable upon conviction to fine and/or revocation of license.

It's a son for DR. and MRS. ROBERT F. McCRARY, born April 28th. Congratulations!

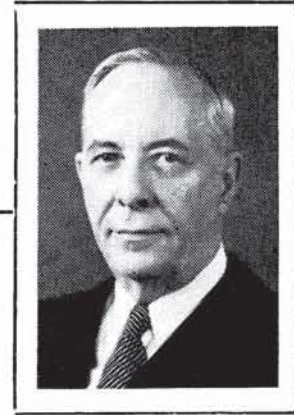
DR. DOUGLAS T. FERRARO has been ill at Hillcrest Hospital of injuries received in an automobile accident last May 12th.

DR. JOHN W. GADDIS, Tulsa physician now serving with the Armed Forces, has completed an Army Medical Corps assignment in Korea and has been transferred to Okinawa.



# Guest Editorial

*A Special Message By  
Mr. Rush Greenslade, Tulsa  
Civic Leader and Chairman, Blood  
Center Committee, Tulsa County Red Cross*



To my mind one of the greatest community assets of Tulsa is the Tulsa County Red Cross Blood Center, now in its fifth year of operation as a joint project of the Tulsa County Chapter of the American Red Cross and the Tulsa County Medical Society. Its value is measured in terms of human life saved, physical health restored, moral and economic rehabilitation, community security, and peace of mind for both doctor and patient. Its financial value is measured by the elimination of the heavy costs formerly associated with the procuring and processing of blood, thus reducing substantially the burden of hospital expense for the patient.

The Tulsa doctor has played an important role in the success of the Blood Center. A fine committee from the Tulsa County Medical Society worked for more than two years with Red Cross officials to establish the Blood Center and subsequently has been an invaluable advisor on all medical problems and policy. The individual Tulsa doctor has, in effect, been a salesman for the Blood Center, and through his unique position as an intimate counselor to the patients under his care has been able to interpret the blood program and encourage the replacement of blood.

The Tulsa County Red Cross Blood Center has a continuing need for the doctor's services as a public relations instrument. The success of the Blood Center has been due primarily to the cooperation of a relatively small segment of the population. Too many Tulsans have neglected their community responsibility to participate in the project, too often through an incomplete understanding of the Center and its functions, or because of detrimental misinformation about the blood program. The true story is an engrossing one—a story which can best be told in its simple sincerity by the doctor.

The possibilities of the Blood Center have barely been touched, its true potentialities unrealized. Thousands of Tulsans have no conception of what the blood program has already meant to them, and more importantly, of what it can mean in the future. A great opportunity is afforded to you, the doctor, to utilize your influential relationship with the public by carrying this message to them. It is not alone a question of maintaining the replacement of donors; rather, it is a need to interpret the overall blood program to the patient and the public; to correct the misunderstandings which exist and to supplant them with reliable information which you, as doctors, are best qualified to give.

Yours is an important responsibility, the discharge of which will be reflected in the tangible benefits to your patients, your profession, and the community. I envy you your opportunity. I know you will make the best of it.

Sincerely yours,

A handwritten signature in dark ink that reads "Rush Greenslade". The signature is written in a cursive style with a prominent initial "R".

*Chairman, Blood Center Committee  
Tulsa County Red Cross*

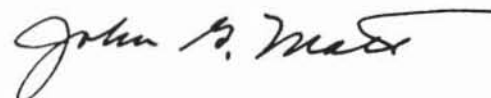
# PRESIDENT'S PAGE

By invitation one of the top officials of the American Medical Association spent an entire day in Tulsa last month inspecting the program of activities of your Tulsa County Medical Society. At a long evening meeting with the Board of Trustees he was most complimentary and commended us for many of our progressive projects, notably the operation of our own Medical Library and the establishment of the Tulsa County Red Cross Blood Center. Asked for his criticisms, he saw as the principal shortcoming the lack of an emergency call system designed to provide a physician for emergencies occurring at all hours of the day and night.

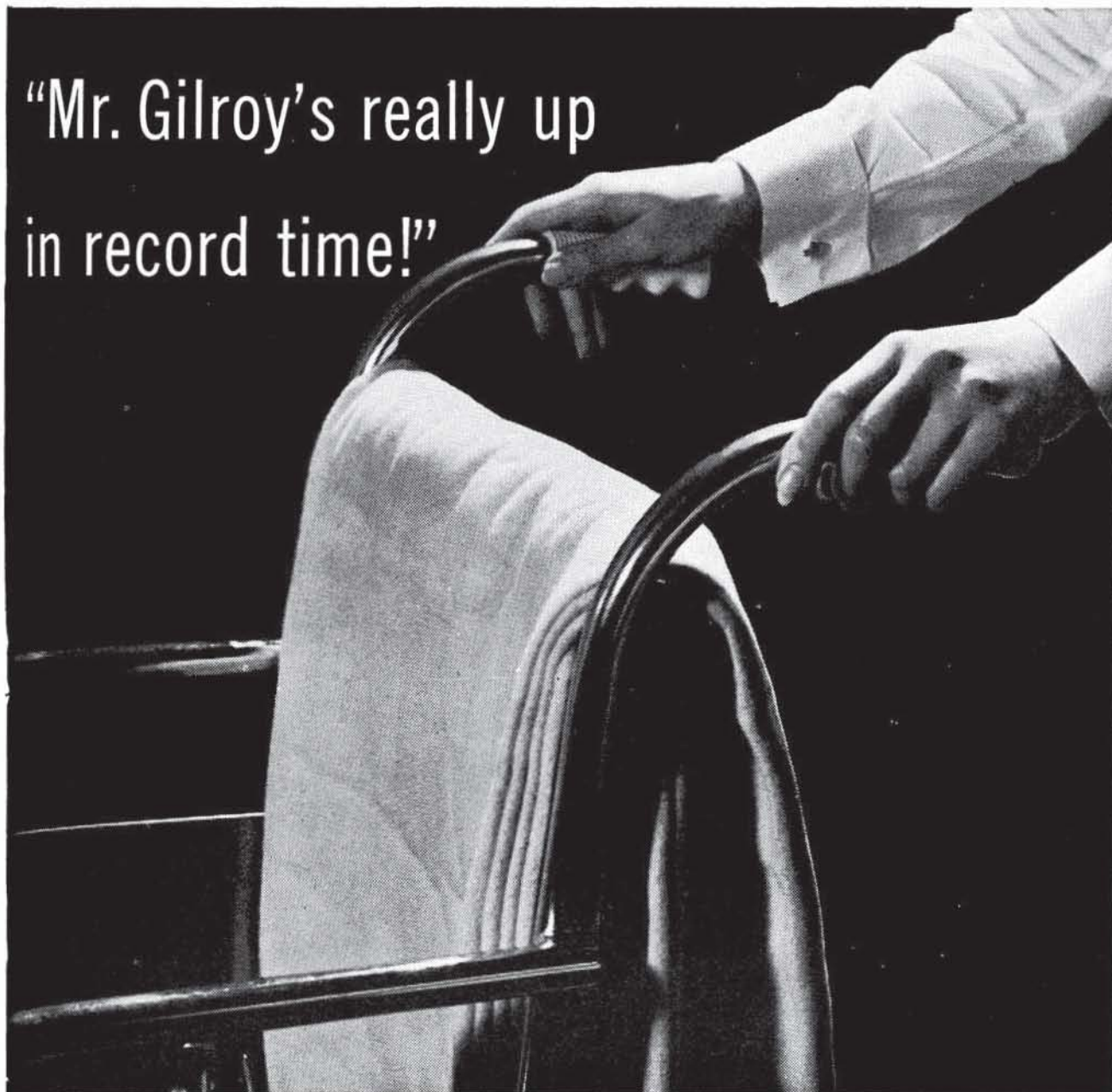
Over 700 such systems are now in operation in the United States, either directly operated by the local medical society or at least under their supervision and regulation. The establishment of such systems has long been urged by the American Medical Association as a Number One "must" for any program of local medical public relations. The idea has been broached to the Tulsa County Medical Society several times in recent years; each time it has received a very cold reception. Tulsa doctors are not convinced that a need for such a system exists and as a result, few have indicated any willingness to participate in such a project.

I think we are overlooking a more important factor in evaluating the project: *the public demand for an emergency call system*. Certainly, there is constantly expressed to the Society from lay sources the need for the security which such a system would provide. The Board of Trustees has asked the Public Policy Committee to again make a study of such plans and to investigate the public attitude in Tulsa towards the problem. If this study demonstrates that we are neglecting the consideration of this public factor, then we must reapproach the problem with a view towards meeting our public responsibilities. It is an important question, and one which cannot be passed off too lightly.

Sincerely,



President



"Mr. Gilroy's really up  
in record time!"



Here's how new POLYSAL<sup>†</sup>/Cutter helps your patients:

- 1. **POLYSAL** prevents and corrects hypopotassemia without danger of toxicity.<sup>1</sup>
- 2. **POLYSAL** corrects moderate acidosis without inducing alkalosis.<sup>1</sup>
- 3. **POLYSAL** replaces the electrolytes in extracellular fluid.<sup>1</sup>
- 4. **POLYSAL** induces copious excretion of urine and salt.<sup>1</sup>

Polysal, a *single* solution to build electrolyte balance, is recommended for electrolyte and fluid replacement in all medical, surgical and pediatric patients where saline

or other electrolyte solutions would ordinarily be given. Write for literature and handy wallet-size mEq chart . . . Cutter Laboratories, Berkeley, California.

1. Fox, C. L. Jr., et al.: An Electrolyte Solution Approximating Plasma Concentrations with Increased Potassium for Routine Fluid and Electrolyte Replacement, J. A. M. A., March 8, 1952.

†Cutter Trade Mark

---

In distilled water—  
250 cc. and 1000 cc.

•

In 5% Dextrose—  
500 cc. and 1000 cc.



MAKE *New* **POLYSAL** YOUR ROUTINE PRESCRIPTION

Representative: Hubert Fraker, 2128 Churchill Way, Oklahoma City, Ph. 8-4050

## JUNE MEDICAL CALENDAR

### MONDAY, June 1st:

Hillcrest Hospital Staff Meeting.  
 1953 Annual Meeting, American Medical Association, Grand Central Palace, New York, N. Y. Continues Through June 5th.  
 Blue Cross Hospital Insurance, Physicians & Surgeons Group, Semi-Annual Premiums due and payable on this date at B-9 Medical Arts Building. Final date for payment, June 10, 1953.

### TUESDAY, June 2nd:

St. John's Tumor Clinic, 8:00 A. M.

### FRIDAY, June 5th:

St. John's Tumor Clinic, Clinical Conference, 8:30 A. M.

### MONDAY, June 8th:

No Tulsa County Medical Society meeting on this date. Scientific meetings discontinued for June, July, and August. Next regular meeting, September 14, 1953.

### TUESDAY, June 9th:

St. John's Tumor Clinic, 8:00 A. M.

### WEDNESDAY, June 10th:

Final date to pay Annual Reregistration Fee to Oklahoma State Board of Medical Examiners.  
 Board of Trustees Meeting, Tulsa County Medical Society, B-9 Medical Arts Building, Tulsa, 1:00 P. M.  
 Final date to pay Blue Cross Hospital Insurance, Physicians & Surgeons Group, semi-annual premiums.

### FRIDAY, June 12th:

St. John's Tumor Clinic, Clinical Conference, 8:30 A. M.

### MONDAY, June 15th:

St. John's Hospital Staff Meeting.

### TUESDAY, June 16th:

Medical Assistants Society, Michaelis Cafeteria, 6:30 P.M.  
 St. John's Tumor Clinic, Clinical Conference, 8:30 A. M.

### WEDNESDAY, June 17th:

Constitution & By-Laws Committee Meeting, Tulsa County Medical Society, B-9 Medical Arts Building, Tulsa, 1:00 P. M.

### FRIDAY, June 19th:

St. John's Tumor Clinic, Clinical Conference, 8:30 A. M.  
 Copy deadline for the July issue of *The Bulletin*. Final date to submit changes of address for inclusion in the Annual Roster of the Tulsa County Medical Society.

### MONDAY, JUNE 22nd:

Tulsa Academy of General Practice Meeting, Hotel Tulsa, 8:00 P. M. Program: "Reconstructive Surgery of the Hand," Dr. Gilbert L. Hyroop, Oklahoma City.

### TUESDAY, June 23rd:

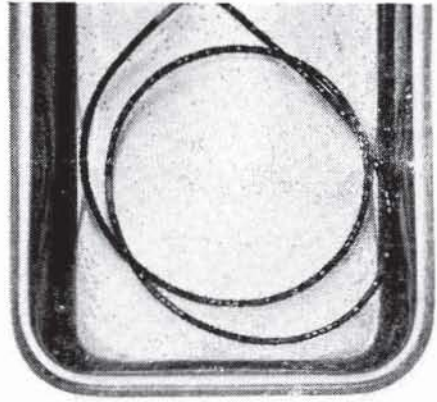
St. John's Tumor Clinic, 8:00 A. M.

### FRIDAY, June 26th:

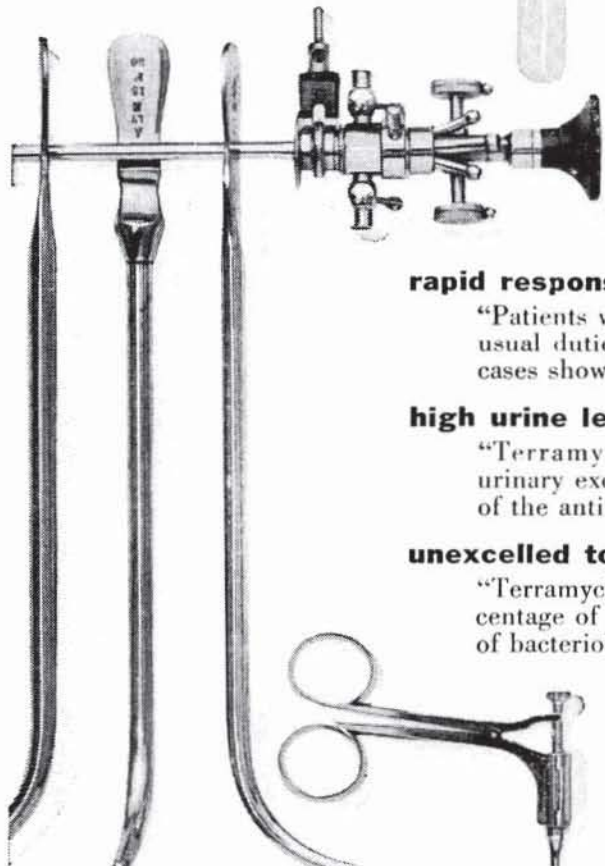
St. John's Tumor Clinic, Clinical Conference, 8:30 A. M.

### TUESDAY, June 30th:

Final day to adapt diathermy equipment in accordance with regulations of Federal Communications Commission.  
 St. John's Tumor Clinic, 8:00 A. M.



**IN URINARY TRACT INFECTIONS**



**rapid response**

"Patients with pyelitis were well and doing their usual duties within 24 hours..."<sup>1</sup> "...resistant cases showed remarkable response."<sup>2</sup>

**high urine levels**

"Terramycin was selected...in view of high urinary excretion rate following small oral doses of the antibiotic."<sup>1</sup>

**unexcelled toleration**

"Terramycin is generally well tolerated, the percentage of relapses being low and the percentage of bacteriological as well as clinical cures high."<sup>3</sup>

1. Canad. M. A. J. 66:151 (Feb.) 1952.
2. J. Urol. 67:762 (May) 1952.
3. Ibid. 69:315 (Feb.) 1953.



# Terramycin

BRAND OF OXYTETRACYCLINE



# **RICH AND CARTMILL**

*Income Protection  
against  
Total Disability*

NOW ISSUED WITH LIFE INSURANCE

NOW ISSUED AS NON-CANCELLABLE

Phone 4-4173  
109 West 4th  
Citizens State  
Bank Building

John R. Cartmill  
I. D. Rich  
Edward L. Bentley  
H. Robert Wood

**Announcing Summer Store Hours:**

8:00 A. M. — 9:00 P. M., daily  
10:00 A. M. — 8:00 P. M., Sunday

---

*Professional*

**DRUG SHOP**

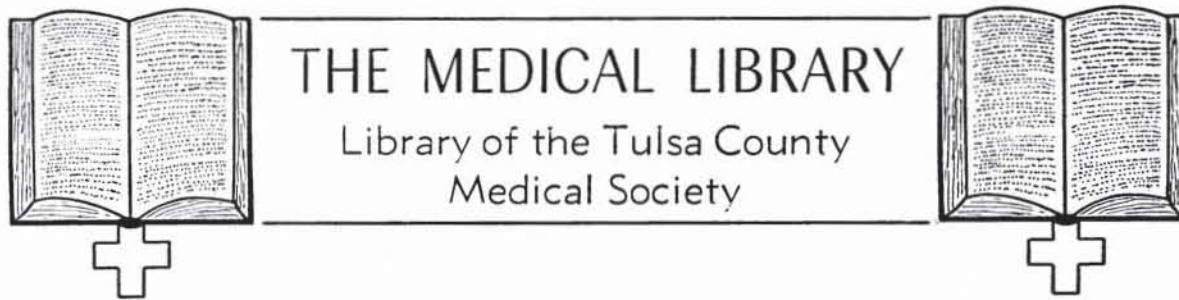
---

D. L. KINCAID  
(Kinney)

2110 South Utica

RAYMOND EWERS

Telephone 3-8169



Miss Irma A. Beehler, *Librarian*

#### GIFTS OF THE MONTH—

**Dr. Henry S. Browne.** A contribution to the Library Fund in memory of Dr. H. Lee Farris.

**Tulsa Chapter, Arthritis and Rheumatism Foundation.** Talbot, John H.: Gout and Gouty Arthritis. (Modern Medicine Monographs #7). 92 pp., illustrated, includes Bibliography. Grune and Stratton, Inc., New York, N. Y., 1953.

#### RECENT ACQUISITIONS:

**Directory of Medical Specialists, Holding Certification by American Boards.** Volume 6, including latest listings, sketch additions, and alphabetical index. A. N. Marquis Company, Chicago, Illinois, 1953.

Two new journal titles have recently appeared and a sample copy of the first one listed is in the library.

**Obstetrics and Gynecology.** Journal of the American Academy of Obstetrics and Gynecology. Published monthly by Paul B. Hoeber, Inc., New York, N. Y. Price \$12.00 per year.

**Clinical Research Proceedings.** The official publication of the American Federation for Clinical Research. Published semi-annually by Grune & Stratton, Inc., New York, N. Y. Price \$3.50 per year.

Several members of the Tulsa County Medical Assistants Society gave their free time on Thursday afternoon, May 7, to help in moving the books to new stacks recently purchased for the Library. Their gift of time and their kind assistance is greatly appreciated.

The Library of the Tulsa County Medical Society has purchased and installed sixteen new units of steel shelving. The installations were made in the additional quarters made available to the Library by the removal of the Executive Offices of the Society to the basement of the Medical Arts Building. Each of the new shelf units, which are movable and adjustable, contain five shelves on each side. The installation of the units completes a program of remodeling and equipping of the new additional quarters. The books and other Library material are being redistributed to make all more accessible. Members of the Society are invited to inspect the expanded Library facilities at their earliest convenience.

On April 16th the Librarian was a guest at a luncheon and open house held at Central High School by the Chamber of Commerce's Business-Education Committee and the Board of Education to sponsor better business-teacher relationships. Two annual events are stressed: B-E Day in the Fall when the school teachers visit Tulsa business and industrial firms, stores and offices, and E-B Day in the Spring when business takes a look at what the schools are doing. It is from the Cooperative Training Program of Central High School that a senior girl is hired each year as a part-time assistant in the Medical Library.



*Tulsa's Better  
Prescription Service*

*Prather's*  
MEDICAL ARTS  
PRESCRIPTION  
Ⓡ *Shop*

- PRESCRIPTIONS
  - SURGICAL SUPPLIES
  - SICKROOM NEEDS

*telephone 4-0121*



## RECENT COMMITTEE ACTIVITIES

Here is a summary of some of the newsworthy activities of several standing and special committees of the Tulsa County Medical Society:

Dr. T. Paul Haney's *Public Health Committee* has been designated as the local supervisory committee for the distribution of Gamma Globulin for immunization against polio. With available quantities almost minute in comparison to actual demand, the GG will be given only for administration to household contacts of diagnosed cases. Committee will distribute only the vaccine made available by the National Foundation For Infantile Paralysis through the Oklahoma State Health Department; regulations will not affect private sales. Extra quantities will be available if a polio epidemic arises in Tulsa. Other Public Health Committee considerations: future of Tulsa's Venereal Disease Clinic (with VD almost eliminated, incidence does not justify maintenance of the present clinic); how to secure prompt treatment of head and skin infections in schoolchildren of low income groups.

Dr. Earl I. Mulmed's *Postgraduate Study Committee* plans the inauguration of a clinical session in Tulsa to be known as the Annual Founder's Day Clinic of the Tulsa County Medical Society. First such event is scheduled for October 12, 1953, and will feature a top visiting distinguished guest speaker in surgery and in medicine. Two lectures will follow a buffet dinner. Committee is now selecting the speakers. Event will commemorate formation of the Society in 1907. If it succeeds, the Annual Founder's Day Clinic will be an annual event and perhaps expanded in scope.

Dr. Hugh Perry's *Public Policy Committee* is preparing an exhibit for Tulsa Progress Week, September 20-26. At that time Tulsa industrial and business firms, professional groups, and other organizations will take over downtown store windows for displays showing progress of Tulsa from a mud-spattered cow town to its present position as Oil Capital of the World. Medical Society exhibit will

stress development of medical facilities and personnel in the area. Heading a special committee for the project are Dr. Walter E. Brown, Dr. J. D. Shipp, Dr. John E. McDonald, and Dr. A. B. Carney.

Dr. Earl M. Lusk's *Constitution and By-Laws Committee* has announced plans to reprint the Tulsa County Medical Society Constitution and By-Laws in a pocket size booklet. The project will utilize a special appropriation for this purpose contained in the 1953 budget. Last printing of the documents was in 1939; since that time the Constitution and By-Laws have undergone a complete overhauling. Booklets are not expected to be ready until Fall, following approval of a few minor amendments now being developed by the Committee.

Dr. H. B. Stewart's *Ethics Committee* has completed a written interpretation of practical problems of medical ethics covering such items as newspaper advertisements, public announcements, identifying



### DICK KELLO

*Invites You To  
Patronize His Fine  
Prescription Service*

*Free Delivery  
Covering East Tulsa*

### BALL DRUG STORE

College at Admiral

Ph. 6-2156, 9-9005

# HARVARD DRUG STORE

B. C. SHINN, Owner

PHONE 6-2186

*The  
Suburban  
Prescription  
Store*

FREE  
PRESCRIPTION  
DELIVERY  
3244 E. 11th St.  
Tulsa

---

## BROOKSIDE PRESCRIPTION SHOP

---

*Conveniently Located  
Ethically Operated  
Prompt,  
Courteous Service*

Ph. 7-3387 — 3409 S. PEORIA

*Delivery, Of Course*

Verle C. Smith

signs, newspaper publicity, etc. Designed primarily to guide new members of the Society entering practice for the first time, the new regulations will be published in mimeograph form to all members early this summer. Document will also be given routinely to all new members.

Dr. Fred E. Woodson's *Insurance Committee* has been burning the midnight oil as an advisory body on medical aspects of pending or threatened malpractice suits against Tulsa County medical doctors. In lengthy sessions with attorneys for the official group malpractice insurance policy, the Committee helps to evaluate the charges against the defendant and assists in developing the medical elements of the defense. Committee hopes to enlarge and improve this function by creation of an advisory body comprising physicians who have been through the experience of a malpractice charge.

Dr. J. D. Shipp's *Legislative Committee* recently hosted members of the Tulsa delegation to the Oklahoma State Legislature at breakfast at The Mayo Hotel. Purpose was to answer lawmaker's questions about medical and health bills in the Legislature.

Dr. Tom R. Turner's *Welfare Committee* has been authorized by the Board of Trustees to proceed with a study of pension plans for doctors and for employees of the Tulsa County Medical Society. The Committee may eventually recommend adoption of an official plan with benefits of group participation.

DR. JAMES H. NEAL, SR. has returned to his desk at the Tulsa City-County Health Department after a brief illness.

It's a girl, Mary Carolyn, for DR. and MRS. OTIS S. LEE, born May 8th at Hot Springs, Arkansas, where Dr. Lee, now with the United States Army Medical Corps, is assigned to the Army-Navy Hospital. Congratulations!

DR. SUMNER Y. ANDELMAN attended a meeting of the Board of Directors of the American Rheumatism Society in New York, May 28-29, and visited in Boston, Massachusetts the week preceding.

**Upjohn**

diarrhea...

Each fluidounce contains:

Kaolin ..... 90 grs.  
Pectin ..... 2 grs.  
in an aromatized and carminative  
vehicle

Available in bottles of 10 oz. and  
1 gallon

THE UPJOHN COMPANY, KALAMAZOO, MICHIGAN

---

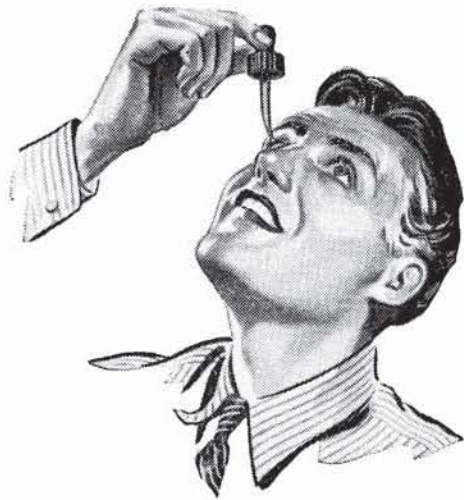
**Kaopectate**

Trademark Reg. U. S. Pat. Off.



# Bath-Opto

Eye Drops  
and Eye Wash



**EYE DROPS**  
With Ephedrine .2%  
1/2-Oz. Dropper Bottle



**EYE WASH**  
Without Ephedrine  
4-Oz. Bottle with Eye Cup

Detailed to the  
Medical Profession Exclusively

Samples on request

**FORMULA:** Boric Acid, Sodium Chloride, Camphor Water, Glycerine, Chlorobutanol.

*Ethical Specialties for the Profession*

**RHINALL**  
Nose Drops

**RHINALL**  
Cold Capsules

**RANALENN**  
for first-aid and  
Fungus infections

**PYROCAIN**  
in Acute Otitis Media

**RHINOPTO COMPANY • Dallas 4, Texas**

*Two fine prescription  
pharmacies to serve you*

**NO. ONE**  
**603 S. BOULDER**  
**TELEPHONE**  
**2-3119**

**NO. TWO**  
**44 N. HARVARD**  
**TELEPHONE**  
**6-1111**

**T. ROY BARNES**  
**D R U G R Y**

*Your Guarantee of Reliable Prescription Service*

### OKLAHOMA CITY SURGEON TO ADDRESS G.P. ACADEMY

Dr. Gilbert L. Hyroop, Oklahoma City plastic surgeon, will be guest speaker for the Tulsa Academy of General Practice on Monday, June 22, 1953, at 8:00 p.m. at Hotel Tulsa. His subject will be "Reconstructive Surgery of the Hand."



Dr. Hyroop

A graduate of the University of Oklahoma School of Medicine, Class of 1927, Dr. Hyroop interned at St. Louis City Hospital and served a surgical residency under Dr. Sterling Bunnell at San Francisco. In practice in Oklahoma City since 1930, he served in World War II as an officer in the Army Medical Corps. Especially interested in the repair of crippled hands, Dr. Hyroop is a founder member of the American Society For Surgery of the Hand and a member of the American Society of Plastic and Reconstructive Surgery.

### JUNE 30 FINAL DATE FOR DIATHERMY MODIFICATIONS

The Federal Communications Commission has advised the Tulsa County Medical Society that it will not extend beyond June 30, 1953, the time limit for the modification of medical diathermy equipment to prevent interference with radio wave transmission.

Under the terms of Public Notice 85968, all such equipment must be either modified to prevent interference or taken out of use by June 30th. The offending equipment is principally units manufactured prior to July 1, 1947. Surgical diathermy is exempt. More complete information will be found on page 825 of the March 7, 1953, issue of the Journal of the American Medical Association.

On the stork list: DR. and MRS. EDWARD M. SCHNEIDER, a son, Douglas Allen, born April 25th. Congratulations!

DR. I. H. NELSON has been at St. John's Hospital following surgery.

## Telephone Your Prescriptions—

*For Prompt And  
Accurate Compounding  
By Reliable Licensed  
Pharmacists*

Free Delivery

Telephone 7-7519

## BROOKSIDE DRUG STORE

3348 South Peoria

## ST. JOHN'S HOSPITAL

*A Leading  
Institution  
In  
Oklahoma  
Medicine*

1923 SOUTH UTICA  
TULSA, OKLAHOMA

TELEPHONE  
7-3361

# ADMIRAL PHARMACY

Admiral at Peoria

*Prescription Druggists*

James E. Lovell

James F. Purdy

*Telephone Us Your*

*Prescriptions*

*Ethically Compounded*

*Free Delivery*

**TELEPHONE 2-5136**

*28 Years Same Location*

*North and West*

**13TH AND MAIN**

*Telephone 4-3103*

**SCOTT ROBISON'S**

*Service*

**PRESCRIPTION  
STORES**

**15TH AND LEWIS**

*Telephone 9-6393*

*South and East*

## BLOOD CENTER NEWS

### DISTRIBUTION & REPLACEMENT REPORT

April, 1953

Hospitals:	Bloods Used:	Replac- ements:	% Repl.
St. John's .....	494	167	33.9%
Hillcrest .....	271	120	44.3%
Osteopathic .....	46	20	43.5%
Mercy .....	27	9	33.3%
Byrne .....	27	8	29.6%
Broken Arrow .....	6	2	33.3%
Moton .....	5	1	20.0%
Other .....	44	7	15.9%
Totals .....	920	334	36.3%

DR. MARTIN LEIBOVITZ has been admitted to membership in the American Association of Thoracic Surgery.

DR. WILLIAM N. HENDERSON, Tulsa physician recently called to duty with the United States Army Medical Corps, has completed his indoctrination training at Fort Sam Houston, Texas, and is now stationed at Camp Chaffee, Fort Smith, Arkansas.

It's a girl for DR. and MRS. VINCEL SUNDGREN, born May 8th. Congratulations!

DR. GERALD CRONK, Tulsa physician recently called to duty with the United States Army, has been assigned to Fort Bliss, El Paso, Texas.

DR. JOHN F. GRAY, JR., attended the annual meeting of the American Psychiatric Association in Los Angeles last month.

Congratulations to DR. and MRS. WILLIAM F. THOMAS, JR. on the arrival of a new son, May 1, 1953.

DR. J. D. SHIPP will attend the American Proctologic Society in Boston, June 10-13.

The medical staff of Hillcrest Hospital feted DR. W. J. TRAINOR with a testimonial dinner on April 27th, paying tribute to the veteran physician on the occasion of his retirement on May 1, 1953, after 50 years of practice. He was given a diamond-studded gold pin and other gifts.

DR. ROGER Q. ATCHLEY was guest speaker for the Tulsa Amateur Movie Club on May 13th, exhibiting his color movies taken in Alaska two years ago.



"PREMARIN"

...*"sense of well-being"*...

Not only relief from menopausal distress but also  
"a striking improvement in the sense of well-being"  
was reported by all patients on "Premarin" therapy.\*

**"PREMARIN"®** *in the menopause*

Estrogenic Substances (water-soluble) also known as  
Conjugated Estrogens (equine). Tablets and liquid.

\*Glass, S. J., and Rosenblum, G.: J. Clin. Endocrinol.  
3:95 (Feb.) 1943.

"PREMARIN"

"PREMARIN"



AYERST, MCKENNA & HARRISON LIMITED • New York, N. Y. • Montreal, Canada

5310

# COURTRIGHT OPTICIAN

*For The Finest In Optical Service*

Tulsa's only "Ophthalmic Dispenser" . . . manufacturing and fitting eye-glasses exclusively for patients of the Eye-Physician . . . visit our complete and modernly equipped laboratory.

**TWO STORES TO SERVE YOU**

**Court Arcade Building**



**1828 Utica Square**

*Roadside Invitation  
To Drive Refreshed*



**DRINK**

*Coca-Cola* 5¢

REG. U.S. PAT. OFF.

BOTTLED UNDER AUTHORITY OF THE COCA COLA COMPANY BY



read **Pfizer**  
**Spectrum**  
 weekly in the J.A.M.A.

Be sure to read these features in JUNE issues of *Spectrum*, appearing in the first section of the

Journal of the American Medical Association

*Hearing Aids • Peptic Ulcer • Giant Molecule  
 Trigger Areas • Eclampsia • Aortography*

plus news and views of current medical meetings, reports, photo stories and other material of interest.



Our modern delivery equipment assures your patients prompt efficient service.

**RALEY - SHADDOCK**  
 PRESCRIPTION PHARMACY

1325 East 15th

Ph. 4-3133

**SPECIAL PURPOSE FOODS**

LOW-SODIUM FOODS

LOW-CALORIE FOODS

DIABETIC FOODS

Phone 3-1106

*Akin's*

718 S. Boulder

**DOCTOR,**  
**May We Help YOU?**

The Visiting Nurse Service can  
save your valuable time!

Nursing care given *only* under  
physician's directions!

All citizens of Tulsa County benefit and may pay according  
to their ability. Maximum fee of \$2.50 per nursing visit.

**Call Your Public Health Association — 5-3238**



*The best in prescription service. Convenient free parking.  
Prompt free delivery. Weekdays 9:00 A.M. to Midnight,  
Sundays 10:00 A.M. to 11:00 P.M.*

**LARRY ENGLERT PRESCRIPTIONS, INC.**

*Burnie L. Bevill, Mgr.*

*Two Pharmacists*

*R. W. Shaffer*

**2526 East Admiral Pl.**

**Ph. 9-7736, 9-7743**

*Be Certain with Curtain*

## CURTAINS PRESCRIPTION LABORATORY

SIXTH AND BOULDER

PHONE 4-7116

*Across the Street North From Medical Arts Bldg.*

## MEDICAL SERVICE SOCIETY OF AMERICA

### Membership Roster, Tulsa Chapter

<i>Name:</i>	<i>Representing:</i>	<i>Telephone:</i>
L. T. Baker	Ciba	5-9003
Bill Brittan	A. H. Robins Co.	7-5414
William A. Cates	E. R. Squibb Co.	7-1267
O. C. Chapman	Merck & Company	3-0654
Joe F. Chappell	Kremers-Urban Co.	3-5237
C. R. Doran	Lakeside	Claremore
R. C. Gooch	Abbott Laboratories	9-4389
J. L. Hedges	S. E. Massengill Co.	6-8538
E. C. Jeep	Lederle Laboratories	72-4365
C. M. (Mike) Kelly	National Drug Co.	2-0015
A. L. Kessler	Pitman-Moore Co.	7-0227
Dorwin Lamkin	Upjohn	7-1668
Kyle Lloyd	Wyeth, Inc.	5-1882
Frank Lupsha	Bauer & Black	3-6212
Ralph L. Miller	Hoffman-LaRoche	7-1878
A. M. Sayles	E. R. Squibb & Co.	72-1646
Tom Sellers	G. D. Searle	9-7361
J. E. Southerland	J. B. Roerig & Co.	4-5707
Cecil Treadway	Wyeth, Inc.	9-0075
Bill Walker	Parke-Davis	9-0815
Preston Walker	Upjohn	7-6464
William A. Wilson	Baxter Laboratories	8-3846
H. L. (Jack) Wood	Winthrop-Stearns	3-3825

## Professional Directory

**S. Y. ANDELMAN, M.D.**  
 Diagnosis & Treatment of  
 Arthritis & Rheumatic Diseases  
 1611 South Boston Ph. 2-3885

**MANUEL BROWN, M. D.**  
 Allergic Diseases  
 1619 E. 15th Street Ph. 54-5552

**BERGET H. BLOCKSOM, M. D.**  
**MAXWELL A. JOHNSON, M. D.**  
 Urologists  
 Diplomates, American Board of Urology  
 517 Medical Arts Bld. Ph. 54-1888

**EMIL M. CHILDERS, M.D.**  
 General Surgery  
 201 Stanolind Bldg. Ph. 2-5143

## Professional Directory

**EUGENE S. COHEN, M.D.**

Obstetrics & Gynecology

1239 East 36th Pl.                      Ph. 7-7703

**SAMUEL E. FRANKLIN, M. D.**

General Surgery

1619 E. 15th Street                      Ph. 3-2109

**ROBERT E. FUNK, M.D.**

Practice Limited to Internal Medicine

212 Medical Arts Bldg.                      Tulsa

**JOHN F. GRAY, JR., M.D.**

Neuropsychiatry

506 Medical Arts Bldg.                      Ph. 2-7039

**HARRY GREEN, M.D.**

Diseases of the Skin  
X-Ray & Radium Therapy

311 Medical Arts Bldg.                      Ph. 4-7585

**MARSHALL O. HART, M.D.**

General Practice

1228 South Boulder                      Ph. 2-5904

**JAMES W. KELLEY, M.D., F.A.C.S.**

Plastic and Reconstructive Surgery  
Diplomate, American Board  
Of Plastic Surgery

206 Philtower Bldg.                      Tulsa

**WALTER S. LARRABEE, M.D.**

X-Ray Diagnosis & Therapy  
Radium Therapy

411 Medical Arts Bldg.                      Ph. 4-3111

# SPRINGER CLINIC

Sixth and Cincinnati

### Tulsa

#### Medicine

D. O. Smith, M.D.

E. G. Hyatt, M.D.

H. A. Ruprecht, M.D.

Albert W. Wallace, M.D.

Vincel Sundgren, M.D.

Dean C. Walker, M.D.

#### Neurology and Psychiatry

Tom R. Turner, M.D.

Joe E. Tyler, M.D.

#### Neurosurgery

Averill Stowell, M.D.

Robert A. Hayne, M.D.

#### Pediatrics

G. R. Russell, M.D.

### Telephone 5-6621

#### General Surgery

Carl J. Hotz, M.D.

William Pratt, M.D.

#### Urology

K. F. Swanson, M.D.

William F. Boyer, M.D.

#### Ear, Nose and Throat and Plastic Surgery

Donald L. Mishler, M.D.

#### Orthopedic Surgery

Charles E. Brighton, M.D.

#### Ophthalmology

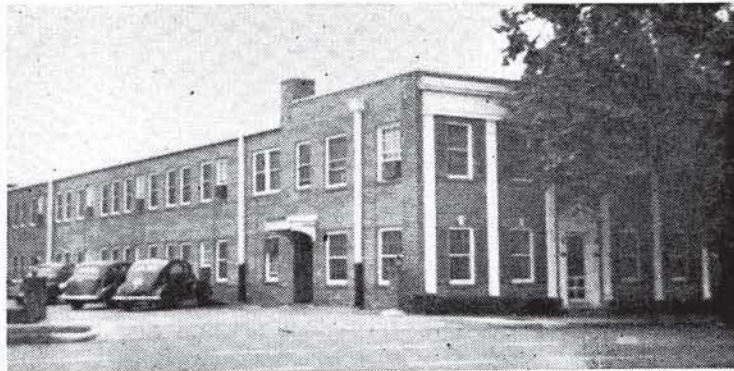
Otis S. Lee, M.D.

#### Anesthesia

M. R. Steel, M.D.

## Professional Directory

<p style="text-align: center;"><b>MARION K. LEDBETTER, M.D.</b> Pediatrics 1453 S. Quaker                      Ph. 3-4332</p>	<p style="text-align: center;"><b>VANCE LUCAS, M. D.</b> Thoracic and General Surgery Diplomate, American Board of Surgery and Board of Thoracic Surgery Medical Arts Building              Ph. 3-5513</p>
<p style="text-align: center;"><b>MARTIN LEBOVITZ, M.D.</b> Thoracic and Cardiovascular Surgery Certified American Board of Surgery and Board of Thoracic Surgery 812 Medical Arts Building      Ph. 3-8722</p>	<p style="text-align: center;"><b>JAMES D. MARKLAND, M.D.</b> Allergy 411 Medical Arts Bldg.              Ph. 4-3111</p>
<p style="text-align: center;"><b>C. S. LEWIS, JR., M.D.</b> Internal Medicine 501 Medical Arts Bldg.          Ph. 54-2778</p>	<p style="text-align: center;"><b>RALPH A. MCGILL, M.D., F.A.C.S.</b> Surgery-Radium 1010 Medical Arts Bldg.          Ph. 4-4215</p>
<p style="text-align: center;"><b>E. N. LUBIN, M.D.</b> Diplomate, American Board of Urology Genito-Urinary Diseases 303 Medical Arts Bldg. Office Ph. 3-6008      Res. Ph. 7-4388</p>	<p style="text-align: center;"><b>EDWARD L. MOORE, M.D., F.A.C.S.</b> Surgery Diplomate, American Board of Surgery 215 Braniff Bldg. Ph. 3-4789                      Res. Ph. 7-1623</p>



## TULSA CLINIC

915 South Cincinnati

Surgery  
Andre B. Carney, M.D.,  
F.I.C.S., F.A.C.S.  
James H. Neal, Jr., M.D.

Medicine  
H. W. Ford, M.D.

Cardiology and  
Internal Medicine  
James C. Peters, M.D.

COMPLETE  
CLINIC  
FACILITIES

Telephone 4-0177

Miss Bettye Adams  
Director

Neurology and  
Internal Medicine  
O. L. Hill, M.D.

X-Ray and  
Gastro-enterology  
Earl M. Lusk, M.D.

Internal Medicine  
Craig S. Jones, M.D.

Dentistry  
J. Thurman Gamble, D.D.S.

## Professional Directory

<p style="text-align: center;"><b>IRON H. NELSON, M.D.</b> Clinical and Surgical Pathology 1107 Medical Arts Bldg.      Tulsa</p>	<p style="text-align: center;"><b>W. A. SHOWMAN, M.D.</b> Dermatology 408 Medical Arts Bldg.      Ph. 3-7789</p>
<p style="text-align: center;"><b>MARQUE O. NELSON, M. D.</b> Practice Limited to Dermatology Radium and X-Ray Therapy 510 Medical Arts Bldg.      Tulsa</p>	<p style="text-align: center;"><b>WADE SISLER, M.D.</b> Orthopedic Surgery 8th &amp; Elgin      Ph. 5-3123</p>
<p style="text-align: center;"><b>L. C. NORTHRUP, M.D., F.I.C.S.</b> Gynecology &amp; Obstetrics 1307 S. Main      Ph. 3-0151</p>	<p style="text-align: center;"><b>CHARLES G. STUARD, M.D.</b> Ophthalmology 221 Court Arcade Bldg.      Ph. 4-3435</p>
<p style="text-align: center;"><b>THE ORTHOPEDIC CLINIC</b> 619 South Main Street      Tulsa Practice Limited To Bone &amp; Joint Surgery <b>JOHN E. McDONALD, M.D.</b> <b>FRANK A. STUART, M.D.</b> <b>JOHN C. DAGUE, M.D.</b> <b>SAMUEL L. FRENCH, M.D.</b></p>	<p style="text-align: center;"><b>LEON H. STUART, M.D., F.A.C.R.</b> X-Ray Diagnosis 1107 Medical Arts Bldg.      Ph. 54-5348</p> <p style="text-align: center;"><b>TURNBOW &amp; RAY CLINIC</b> Surgery — Diagnostic and Therapeutic Blocks 3015 E. 15th Street Ph. 9-6397      Ph. 9-6398</p>
<p style="text-align: center;"><b>SIMON POLLACK, M.D., D.A.B.R.</b> Diagnostic and Therapeutic Radiology 316 Braniff Bldg.      Ph. 2-7517</p>	<p style="text-align: center;"><b>SAFETY R. FIRST, M.D., F.A.C.C.</b> Cardiology &amp; Electrocardiology 1011 Medical Arts Bldg.      Ph. 5-7545</p>
<p style="text-align: center;"><b>HERSCHEL J. RUBIN, M.D.</b> <b>LEONARD L. KISHNER, M.D.</b> Diplomates, American Board of Pediatrics Diseases of Infants &amp; Children 1916 South Utica      Tulsa</p>	<p style="text-align: center;"><b>ARNOLD H. UNGERMAN, M.D.</b> <b>MILFORD S. UNGERMAN, M.D.</b> Diagnosis &amp; Treatment of Nervous and Mental Diseases 404 Medical Arts Bldg.      Ph. 2-3151</p>
<p style="text-align: center;"><b>MAURICE J. SEARLE, M.D.</b> Pediatrics Diplomate, American Board of Pediatrics 512 Medical Arts Bldg.      Tulsa</p>	<p style="text-align: center;"><b>R. M. WADSWORTH, M.D.</b> Pediatrics 1445 S. Quaker      Ph. 3-4300</p>
<p style="text-align: center;"><b>J. D. SHIPP, M.D.</b> Surgery and Diseases of the Colon and Rectum 708 Medical Arts Bldg.      Tulsa</p>	<p style="text-align: center;"><b>J. E. WALLACE, M.D.</b> Gynecology 1328 S. Peoria      Ph. 3-2383</p>



For  
**RADIANT HEALTH  
BUOYANT ENERGY  
SOUND BONES  
BEAUTIFUL TEETH**

We Recommend  
**Homogenized  
'VITAMIN D' MILK**

Fortified With 400 U.S.P. Units  
Vitamin D Per Quart, By Vitex Process

**Beatrice Foods Co.**

215 North Denver

Telephone 4-2471

## Helpful Handouts While They Wait

### **"Feeding Little Folks"**

Booklet — how to bring children and foods together happily

### **"Growing Up"**

Booklet — proper food and health habits for children

### **"Do Your Children Have a Healthful Day?"**

Leaflet — your child's day, right and wrong story

### **"Eating Is For Everybody"**

Booklet — persuades men and women to pay more attention to what they eat

*Obtained Free From*

## DAIRY COUNCIL OF TULSA

312 Wright Building

Tulsa 3, Oklahoma

Phone 4-8280

Tulsa County Medical Society  
B-9 Medical Arts Building  
Tulsa 3, Oklahoma

Sec. 34.66 P. L. & R.

U. S. POSTAGE

**PAID**

TULSA 3, OKLA.

PERMIT No. 13

(Return Postage Guaranteed)

417 EAST THIRD

TELEPHONE 2-2450

## **COMMERCIAL PRINTING COMPANY**

Serving dozens of Tulsa doctors  
and clinics in the printing of fine quality letterheads,  
statements, envelopes, prescription blanks, case histories.

### *Oklahoma's Finest One-Stop Service*

Physicians and Hospital Equipment and Supplies

X-Ray Apparatus and Accessories

Fully Modernized Facilities

**MID-CONTINENT  
SURGICAL SUPPLY CO.**

Telephone 2-8169  
1330 SOUTH BOSTON  
TULSA

**MERKEL X-RAY CO.**

Telephone 2-4897  
1330 SOUTH BOSTON  
TULSA

OKLAHOMA CITY — 21 BROADWAY CIRCLE

LIBRARY  
TULSA COUNTY MEDICAL SOCIETY