



# THE BULLETIN

*of the Tulsa County Medical Society*

*Build Tulsa*



## **IN THIS ISSUE**



Eleven Guest Lecturers  
Set For State Convention



The Medical Library



San Francisco Psychiatrist  
Speaks Here April 14th



April Medical Calendar

---

## **59TH ANNUAL CONVENTION**

*Oklahoma State  
Medical Association*

**OKLAHOMA CITY  
MAY 18 - 21**

---

April, 1952

---

Vol. 18

No. 4

---

# MULCIN

with its *natural orange flavor*

**PUTS A SMILE IN  
THE VITAMIN SPOON**



The eager way that Mulcin is taken, even by finicky children, solves one of the most common problems in prophylactic vitamin supplementation.

Already accustomed to the refreshing flavor of orange juice, children and adolescents welcome Mulcin as a daily "treat." The yellow color of this vitamin emulsion is appetizing too. And there is no unpleasant aroma or after-taste to detract from acceptability.

Mulcin's smooth, non-sticky texture makes it easy to pour. For infants, it mixes readily with formula, fruit juice or water. Clear and light, Mulcin does not separate on standing or shaking. It's stable at room temperatures.

*Superior* in every way . . . Mulcin is truly an achievement in pharmaceutical elegance.

**EACH TEASPOON SUPPLIES:**  
Vitamin A . . . . . 3000 units  
Vitamin D . . . . . 1000 units  
Thiamine . . . . . 1.0 mg.  
Riboflavin . . . . . 1.2 mg.  
Niacinamide . . . . . 8.0 mg.  
Ascorbic acid . . . . . 50 mg.



*Available in 4 oz. and  
economical 1 pint bottles.*

**MEAD JOHNSON & CO. • EVANSVILLE 21, IND., U. S. A.**

Local Representative: James E. Bodie, 244 South Estelle, Wichita, Kansas

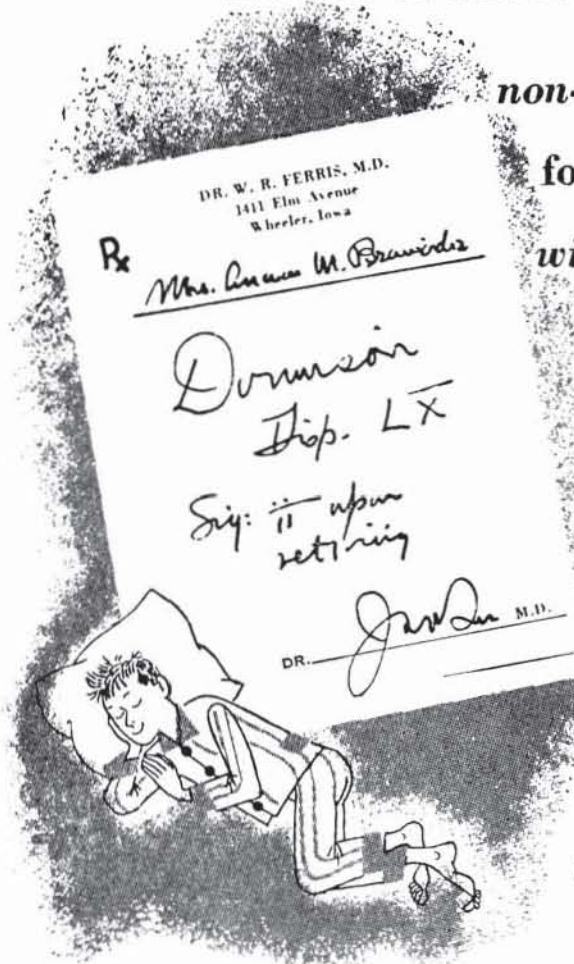
For insomnia... you can prescribe with safety

# DORMISON

*non-barbiturate* hypnotic

for SAFE, SOUND SLEEP

without drug hangover



The extraordinarily wide margin of safety of DORMISON permits patients who awaken in the early morning and desire more sleep to repeat the dose. DORMISON is rapidly metabolized (one to two hours) so that there is no prolonged suppressive action. Patients awaken rested and refreshed as from normal slumber. DORMISON has no cumulative effect, no toxic effects on prolonged use. There is no evidence to date that DORMISON has habit-forming or addiction properties.

**DOSAGE:** Two 250 mg. capsules are recommended, although many patients respond to one.

**DORMISON\*** (methylparafynol-Schering), capsules of 250 mg., bottles of 100.

\*T.M.

*Schering* CORPORATION, BLOOMFIELD, N. J.



# DORMISON



# Prescription For Pleasing A Patient . . . .

Take ONE ATTRACTIVE WAITING ROOM of the Medical Arts Prescription Shop.

Add the friendly smile of our experienced registered pharmacists.

Stir in QUICK EFFICIENT SERVICE in compounding prescriptions in a matter of seconds.

Top off with reasonable popular prices on all drugs, biologicals, and pharmaceutical products.

Garnish with an appreciative "THANK YOU."

The Result: A SATISFIED CUSTOMER secure in the knowledge his prescription has been reliably compounded exactly in accordance with doctors orders.

*Telephone 4-0121*

## **MEDICAL ARTS PRESCRIPTION SHOP**

In The Medical Arts Building

O. L. Prather, Mgr.      Free Citywide Delivery

*In The Medical Arts Building*

# GETMAN'S

ROY R. GETMAN, Founder



Store Number One  
MAIN & 6TH  
Telephone 3-6171

Store Number Two  
4606 EAST 11TH  
Telephone 9-5233

*As Near To You  
As Your Telephone*

## "INGREDIENTS"

No medicine of compounded prescription can be any better than "the things of which it is made". We have "the things" you need — when you need them! And you may be certain that your orders are followed "to the letter".

FREE DELIVERY NIGHT AND DAY.

WE GIVE S & H GREEN STAMPS

Sponsors of the "Tell Me, Doctor" Radio Broadcasts at 5:15 P.M. each Monday through Friday, KTUL, prepared by The Oklahoma State Medical Association.

## CONTENTS

Convention Speakers Announced.....	7
April Program News .....	8
Child Institute Scheduled .....	8
The Medical Library.....	9
The President's Message .....	10
Ob.-Gyn. Course Announced .....	13
Postgraduate Study Series .....	13
Harold V. Courtright Dies .....	13
Hillcrest Sets Polio Center .....	14
Personals .....	14
Blood Center News .....	17
April Medical Calendar .....	18
A Note Of Thanks .....	20

## ADVERTISERS

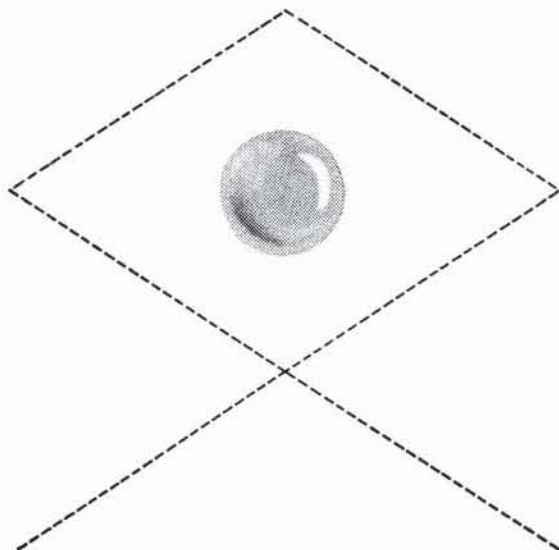
Akin's Natural Foods .....	20
Ayerst, McKenna & Harrison .....	19
Ball Drug Store .....	21
Beatrice Foods, Inc. ....	27
Brookside Prescription Shop .....	14
Coca Cola .....	12
Commercial Printing Co. ....	23
Courtright-Optician .....	16
Curtain's Prescription Laboratory.....	23
Cutter Laboratories .....	11
Dairy Council of Tulsa .....	21
Eli Lilly & Company .....	6
Getman Drug Store .....	5
Harvard Drug Store .....	22
Hillcrest Hospital .....	27
Mead Johnson & Company .....	2
Medical Arts Prescription Shop.....	4
Medical Credit Bureau.....	21
Medical Service Society.....	16
Merkel X-Ray Co. ....	28
Mid-Continent Surgical Supply Co. ....	28
Al Musick Drug .....	15
Professional Directory .....	23
Professional Drug Shop.....	22
Public Health Association.....	23
Raley-Shaddock Pharmacy .....	16
Schering Corporation .....	3
Scott Robison's Drug Store.....	20
Springer Clinic .....	24
St. John's Hospital .....	22
T. Roy Barnes Drugry.....	12
Tulsa Clinic .....	25

# MI-CEBRIN

(VITAMIN-MINERAL SUPPLEMENTS, LILLY)

provides **all essential vitamins**

and those trace elements  
believed to be  
indispensable —  
for normal, healthy existence,  
continued vigor,  
efficiency.



Your prescription for one tablet 'Mi-Cebrin' daily assures the following intake:

Thiamine Mononitrate	10	mg.
Riboflavin	5	mg.
Pyridoxine Hydrochloride	2	mg.
Pantothenic Acid (as Calcium Pantothenate)	10	mg.
Nicotinamide	30	mg.
Vitamin B <sub>12</sub> (Activity Equivalent)	3	mcg.
Folic Acid	0.1	mg.
Ascorbic Acid (as Sodium Ascorbate)	100	mg.
Alphatocopherols	5	mg.
Vitamin A 10,000 U.S.P. or International units		
Vitamin D 1,000 U.S.P. or International units		

and also furnishes (approximate amounts):

Iron (as Ferrous Sulfate)	15	mg.
Copper (as the Sulfate)	1	mg.
Iodine (as Potassium Iodide)	0.15	mg.
Cobalt (as the Sulfate)	0.1	mg.
Boron (as Boric Acid)	0.1	mg.
Manganese (as the Glycerophosphate)	1	mg.
Magnesium (as the Oxide)	5	mg.
Molybdenum (as Ammonium Molybdate)	0.2	mg.
Potassium (as the Chloride)	5	mg.
Zinc (as the Chloride)	1.5	mg.

# THE BULLETIN

OF THE

## TULSA COUNTY MEDICAL SOCIETY

Marshall O. Hart, M.D., *President*John G. Matt, M.D., *President-Elect*W. D. Hoover, M.D., *Vice-President*Paul T. Strong, M.D., *Secretary-Treasurer*Jack Spears, *Executive Secretary*

Vol. 18

TULSA, OKLAHOMA, APRIL, 1952

No. 4

## GUEST SPEAKERS SET FOR STATE MEETING

**Television Presentations to Highlight Annual Meeting of Oklahoma State Medical Association in Oklahoma City, May 19-21. Hotel Reservations Available.**

Eleven nationally known medical personalities from all parts of the United States will highlight the 59th Annual Meeting of the Oklahoma State Medical Association at Oklahoma City, May 19-21, 1952, as guest speakers. Other features of the scientific program will include daily television broadcasts from University Hospital, panel discussions, roundtable luncheons, and scientific exhibits.

Guest speakers will include:

**Dr. Howard Ulfelder**, Associate Professor of Gynecology, Harvard University School of Medicine, Boston, Massachusetts.

**Dr. Lawrence S. Fallis**, Surgeon In Charge, Division of General Surgery, Henry Ford Hospital, Detroit, Michigan.

**Dr. Charles L. Martin**, Professor of Radiology, Southwestern Medical College, Dallas, Texas.

**Dr. J. Edward Berk**, Associate Professor of Medicine, Temple University School of Medicine, Philadelphia, Pa.

**Dr. Ormond S. Culp**, Urologist, Mayo Clinic Foundation, Rochester, Minnesota.

**Dr. H. Harlan Crank**, Psychiatrist, Houston, Texas.

**Dr. W. E. Herrell**, Internal Medicine, Mayo Clinic Foundation, Rochester, Minnesota.

**Dr. John R. Haserick**, Chief of Dermatology, Cleveland Clinic, Cleveland, Ohio.

**Dr. Walter A. Fansler**, Professor of Proctology, University of Minnesota School of Medicine, Minneapolis, Minn.

**Dr. J. M. Robinson**, Associate Pro-

fessor of Otolaryngology, Baylor University School of Medicine, Houston, Texas.

**Dr. Bruce Chown**, Director of Pediatrics, University of Manitoba Faculty of Medicine, Winnipeg, Manitoba, Canada.

The entire meeting will be in the Zebra Room of the Oklahoma City Municipal Auditorium. Twenty scientific exhibits have been scheduled and there will also be sixty eight commercial exhibits of leading business firms catering to the medical profession.

The House of Delegates will meet Sunday, May 18, at 2:00 p.m. in the Hall of Mirrors of the Auditorium. Council will meet the same day at 10:00 a.m.

The popular series of television demonstrations from University Hospital so well received at the 1950 convention will be repeated each morning from 9:00 a.m. to 10:00 a.m. A new innovation is a panel discussion to be held each afternoon at 4:00 p.m.

The President's Annual Dinner Dance will be held Tuesday, May 20. A top name band is being negotiated. The Past-Presidents Breakfast will be an event of Monday morning, May 19.

A complete program will appear in the May issue of the Journal of the Oklahoma State Medical Association. Hotel reservation forms may also be found in the April and May issues, and members from Tulsa planning to attend are urged to make hotel reservations early.

The Woman's Auxiliary to the Oklahoma State Medical Association is also planning a complete program of activity during the convention dates.



### CALIFORNIA PSYCHIATRIST TO SPEAK HERE APRIL 14TH

Dr. Hale F. Shirley, Associate Professor of Pediatrics and Psychiatry at Stanford University School of Medicine, San Francisco, California, will be guest speaker for the Tulsa County Medical Society on Monday, April 14, 1952, at 8:00 P.M. at The Mayo. His subject will be "The Emotional Development of the Child."

Nationally recognized as one of the nation's foremost child psychiatrists, Dr. Shirley is a graduate of the University of Iowa School of Medicine, Class of 1927. He served a two-year rotating internship, including fourteen months in Pediatrics, at University Hospitals, Iowa City, Iowa, immediately after graduation and was subsequently resident in Pediatrics at Children's Hospital, University of Iowa, and at St. Louis Children's Hospital, Washington University, St. Louis, Mo. From 1931 to 1933 he practiced pediatrics at Lincoln, Nebraska, and later returned to the University of Iowa for two years special training in psychiatry. In 1935 he was appointed to the faculty of the University of Iowa School of Medicine, leaving two years later to teach at Johns Hopkins Medical School, Baltimore, as an Assistant in Psychiatry. He returned to

the University of Iowa as Assistant Professor of Psychiatry in 1937 and resigned two years later to assume his present duties at Stanford University School of Medicine. He is now Director of the Child Psychiatry Unit of the Stanford University School of Medicine. Dr. Shirley is the author of numerous scientific articles and a frequent speaker at medical groups over the nation.

### INSTITUTE ON EMOTIONAL PROBLEMS OF CHILDREN SET

All medical doctors of Northeastern Oklahoma are invited to attend a one-day Institute On Emotional Problems Of Children to be held Tuesday, April 15, 1952, at the University of Tulsa. Designed as a study of emotional problems of normal children, the Institute will feature special sections for medical doctors, nurses and therapists, school personnel, health and case workers, and youth activity leaders.

Speakers for the Institute will include:

**Dr. Hale F. Shirley**, Associate Professor of Pediatrics and Psychiatry, Stanford University School of Medicine, San Francisco, California.

**Dr. A. A. Hellams**, Director of Mental Hygiene, Oklahoma State Department of Health, Oklahoma City, Oklahoma.

**Dr. George Williams**, Director and Psychiatrist of the Mental Hygiene Clinic, Rochester-Olmstead County Public Health Center, Rochester, Minnesota.

**Dr. Anchar F. Zeller**, Associate Professor of Psychology, University of Tulsa, Tulsa, Oklahoma.

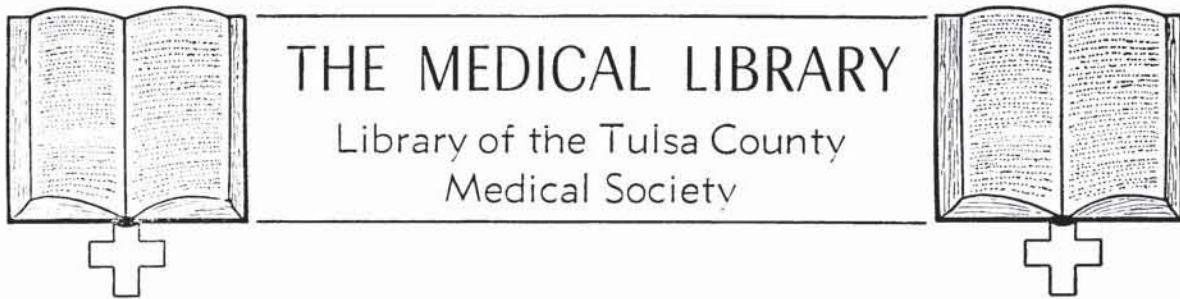
**Miss Alice Herzig**, Mental Health Nurse Consultant, Regional Office, U. S. Public Health Service, Dallas, Texas.

**Miss Mary A. Gormley**, Psychiatric Social Work Consultant, Oklahoma State Department of Health, Oklahoma City, Oklahoma.

To conserve doctors' time, the Section for Physicians will meet at 9:30 a.m. through 12:00 noon. Dr. Shirley will conduct two panel discussions, "Emotional Problems Of Illness" and "Physician-Child-Parent Relationships." Dr. Shirley will speak at a luncheon for all sections at 12:30 p.m. at University Methodist Church on the subject, "What Is The

(Continued On Page 20)



**Medical Library Committee:**Robert E. Funk, M.D., *Chairman*

Thomas J. Hardman, M.D.

David V. Hudson, M.D.

Marque O. Nelson, M.D.

William R. Turnbow, M.D.

Miss Irma A. Beehler, *Librarian*

Telephone 4-1461

**GIFTS OF THE MONTH—:**

**Dr. Safety R. First.** Grant, Robert P., M.D. and Estes, E. Harvey, M.D., *Spatial Vector Electrocardiography, Clinical Electrocardiographic Interpretation.* Pp. 149, figures 49, Blakiston Company, Philadelphia, Pennsylvania, 1951.

**Dr. Paul Grosshart.** *Miscellaneous issues of various journals.*

**Dr. A. Ray Wiley.** *Miscellaneous issues of various journals.*

**PUBLICATIONS BY MEMBERS OF THE TULSA COUNTY MEDICAL SOCIETY—:**

**Dr. Paul E. Craig.** *Supplemental Treatment of Hypertension With A Cation Exchanger.* *Medical Times*, 80:92-96 (February) 1952.

**Dr. Marque O. Nelson.** *Eczema and Fungus Infections.* *Proceedings of the Staff Meeting of Hillcrest Memorial Hospital*, 9:359-368 (January) 1952.

**RECENT ACQUISITIONS—:**

The illustrations from the works of Andreas Vesalius of Brussels, with annotations and translations, a discussion of the plates and their background, authorship and influence, and a biographical sketch of Vesalius by J. B. deC. M. Saunders, University of California, and Charles D. O'Malley, Stanford University. 252 pp., 96 plates with frontispiece a woodcut portrait of Vesalius. World Publishing Company, Cleveland, Ohio, 1950.

This work of Vesalius, which includes *De Humani Corporis Fabrica*, *Epitome*, and *Tabulae Sex*, has long been regarded as a monument in the history of medical science and art. Up to the time of this publication it was available only with the Latin text and in folio editions. The translators explain that "the illustrations reproduced in this volume are derived from the magnificent edition of the plates entitled the *Icones Anatomicae* of Andreas Vesalius and, for the most part, struck directly from the wood blocks and published jointly by the New York Academy of Medicine and the Library of the University of Munich in 1934." These precious wood blocks were destroyed in the bombing of Munich during World War II.

The Tulsa County Medical Society Library is fortunate in owning a copy of this remarkable work of creative art.

A new section of shelving has been built in the Main Reading Room of the Library of the Tulsa County Medical Society, just inside the inner door. Extending from floor to ceiling, it will provide space for approximately 250 volumes. This is the last bit of wall space which can be utilized in such manner. As the Library requires space for approximately 400 new bound volumes each year, this new addition plus some little available space will provide room for necessary expansion for two years at most. After that time the Library must find some other method of meeting its growing requirements for shelf space.

**USE YOUR LIBRARY**

# *The* PRESIDENT'S MESSAGE

---

*"If We Can Prevent the Government from Wasting the Labors of the People Under the Pretense of Caring for Them. We Shall be Happy."*

—Thomas Jefferson

Free socialism, New Deal parasitism from honeymoon to grave. You doubt it? Premarital blood tests, free. Imagine a fellow getting married who hasn't money enough to pay for his blood test! V.D., syphilis and gonorrhea, free treatment. Why?

Prenatal care in government clinics, delivery and postpartum free. Home nursing service to bathe you and the baby, lecture the family, prepare their meals, and entertain Gramp. Mothers, wives and daughters used to do this but no more. A free clinic for the baby, free immunization, free tonsillectomies, child guidance, free medical and nursing supervision in schools for all; free indoctrination of the free philosophy for all children.

A.D.C. will supply the funds free for such items as food, clothing and shelter, and will pay a bonus for each child; you need not be married, a free divorce if you happen to be. Also free pregnancy prevention clinics, if you think that way.

Unemployment insurance for those too lazy to work, social security is very close. Pensions to the political faithful, socialization of agriculture a la Brannen. Public utilities, power, light, gas, communication, transportation subsidized before elimination. Business, professions, labor — taxed to death, then taken over by the government.

Education is subsidized and used as a medium of communist indoctrination of youth. The Budapest-born Anna Rosenberg, female head of our war manpower. Sacrifice of our sons on foreign soil in "undeclared police actions" to satisfy Acheson, Lattimore, Hiss. The satellites of Ewing, Hiscock, medical pamphleteers who are aiding in this scheme.

Do you vote? Do you attend Medical Society meetings? Remember Douglas MacArthur was fired for less neglect. Do you speak out against these termites? If the answer is no, then why don't you get in there and help unseat these varmits? *They all* vote, beat the political bushes, circularize you with pamphlets, get on the radio, newspaper, etc., while you sleep. It is much later than you think.

*"Something Is Wrong With the Heart of a Man Who is not a Socialist at 20.  
Something is Wrong with His Head if He is Still a Socialist at 40."*

Sincerely yours,



President

a new angle for arthritis relief

FOLLOWING HORMONE THERAPY



Following withdrawal of Hormone Therapy,  
B. I. P. may sustain the level of hormone-  
induced remission — safely and at very low cost.

Try B. I. P. for patients unresponsive to hormone  
therapy, and where the clinical value does not  
support hormone cost. B. I. P. alleviates pain and  
slows the disease process in a surprisingly  
large number of cases.

Order B. I. P. in 5 cc. and 20 cc. vials

CUTTER LABORATORIES • Berkeley, California

\*Registered trade mark for Cutter Bacterial Intravenous Protein

*Remember Doctor . . .*

If you seek the finest in reliable prescription service, we are constantly at your service. Our reputation is built upon years of experienced service to you and your patients. Call us today!

---

**T. ROY BARNES  
D R U G R Y**

---

603 SOUTH BOULDER  
Phone 2-3119

44 NORTH HARVARD  
Phone 6-1111

*Hospitality Is An Art  
Coke Makes It So Easy*



**DRINK**  
*Coca-Cola*  
REG. U.S. PAT. OFF.

BOTTLED UNDER AUTHORITY OF THE COCA COLA COMPANY BY

## HILLCREST OB.-GYN. MEET SCHEDULED FOR APRIL 7TH

The Section of Obstetrics and Gynecology of Hillcrest Memorial Hospital has scheduled a one-day postgraduate study course on April 7, 1952, featuring three visiting guest speakers. All medical doctors in Northeastern Oklahoma are invited to attend.

Guest lecturers will include Dr. Joseph W. Kelso, Associate Professor of Gynecology, University of Oklahoma School of Medicine, Oklahoma City; Dr. Willis Brown, Professor of Obstetrics, University of Arkansas School of Medicine, Little Rock, Arkansas; Dr. Edwin Jungck, Assistant Professor of Gynecology, University of Arkansas School of Medicine, Little Rock, Arkansas; and Dr. Walter Hartford, Oklahoma City gynecologist.

All lectures will be held in the Staff Room of Hillcrest Lying-In Hospital. Luncheon will be served in the Conference Dining Room at Hillcrest. Luncheon reservations may be made by calling 2-5145. Dr. Herbert S. Orr will be Chairman of the Program.

The program is as follows:

8:00 A.M.—Surgery, Vaginal Hysterectomy (if available), Dr. Joseph W. Kelso, Oklahoma City.

9:00 A.M.—Motion Pictures.

10:00 A.M.—“Dysfunctional Uterine Bleeding,” Dr. William N. Henderson, Tulsa.

10:30 A.M.—“Cervical Cytology,” Dr. Walter Hartford, Oklahoma City.

11:00 A.M.—“Induction of Labor,” Dr. L. C. Northrup, Tulsa.

11:30 A.M.—“Complications of Pregnancy,” Dr. Herbert S. Orr, Tulsa.

12:15 P.M.—Roundtable Luncheon and General Discussion.

2:00 P.M.—“Gamete Production in Infertility With Endometrial Biopsy,” Dr. Edwin Jungck, Little Rock, Ark.

3:00 P.M.—“Avoiding Complications of Obstetrical Anesthesia,” Dr. E. Lee Gentry, Tulsa.

3:30 P.M.—“Dystocia,” Dr. W. A. Dean, Tulsa.

4:00 P.M.—“Forceps Delivery,” Dr. Charles H. Eads, Tulsa.

4:30 P.M.—“Indications For Caesarean

Section Section,” Dr. William C. Ewell, Tulsa.

7:00 P.M.—Motion Pictures.

8:00 P.M.—“Carcinoma of Cervix,” Dr. Willis Brown, Little Rock, Ark. This will be in conjunction with the regular staff meeting of Hillcrest Hospital.

## FOUR LECTURES SET FOR POSTGRADUATE STUDY SERIES

The second and third sessions of A Review of General Medicine, a regional postgraduate program sponsored by the Oklahoma State Medical Association and the University of Oklahoma School of Medicine, will be held on Thursday, April 3, and Thursday, April 24, in the Nurses Auditorium of St. John's Hospital.

Each session will consist of two lectures. All medical doctors are invited to attend. A fee of \$2.50 per session, payable at the door, is charged (except for interns and residents who may attend without fee). The subjects will be as follows:

April 3, 1952—“Recent Advances In Surgery,” Dr. L. J. Starry, Oklahoma City; “Recent Advances In Pediatrics,” Dr. Marion K. Ledbetter, Tulsa.

April 24, 1952—“Emergency Orthopedic Measures,” Dr. Kelly West, Oklahoma City; “Management of Obstetrical Problems,” Dr. M. J. Serwer, Oklahoma City.

The Postgraduate Study Committee of the Tulsa County Medical Society, Dr. Henry A. Brocksmith, Chairman, is in charge of local arrangements. The first session was held March 13th with Dr. Robert Lowe and Dr. C. P. Bondurant, both of Oklahoma City, as guest speakers.

## HAROLD V. COURTRIGHT

The sudden death of Harold V. Courtright on March 7th saddened the entire Tulsa medical profession as well as his hundreds of friends among the laity. As a leading Tulsa optician for the past fifteen years he became part and parcel of Tulsa Medicine through his interest and support of medical objectives. His friendship, consideration, understanding, and high attributes of character will be sorely missed.

## HILLCREST LYING-IN TO BE MADE INTO POLIO CENTER

Plans to convert Hillcrest Lying-In Hospital of Tulsa into a Polio Center for treatment of both acute and convalescent cases of infantile paralysis have been announced by the Board of Trustees of the Hospital. A formal opening of the new Center will take place this Spring after present obstetrical facilities have been transferred to Hillcrest's newly completed addition.

Complete facilities for treatment of polio in all stages including rehabilitation of post-polio patients will be installed. Training of personnel will be emphasized. The Center will receive polio patients of all ages from all parts of the State. "It is the hope that we will be able to build up a Polio Center which will compare with Polio Centers anywhere in the country," said Dr. Ian MacKenzie, Director of the Hillcrest Polio Unit.

The Tulsa Chapter of the National Foundation For Infantile Paralysis has given assurances of cooperation in developing the new project. The exact date of the opening of the Center will be announced later.

### *Tulsa's Newest Prescription Pharmacy*

---

## **BROOKSIDE**

### **PRESCRIPTION SHOP**

---

Charles H. Dalrymple

Verle C. Smith

**Ph. 7-3387 — 3409 S. PEORIA**

City Wide Delivery

Prescriptions      Sick Room Supplies

DR. ROBERT B. WITCHER has been confined to his home following an attack of coronary thrombosis.

DR. H. F. FLANIGIN, JR. spoke on "The Relief of Intractable Pain" at the monthly staff meeting of Byrne Memorial Hospital, March 12, 1952. DR. CARL H. GUILD is now Chief of Staff at Byrne and DR. MARION K. LEDBETTER is Secretary-Treasurer.

DR. ROBERT M. SHEPARD, JR. has taken attractive new offices at 707 Medical Arts Building.

DR. GEORGE M. DAVIS, SR., Bixby, has been elected a Life Member of the Tulsa County Medical Society.

DR. EDWARD L. MOORE spoke on "Management of Abdominal Colostomy" at a meeting of the District Number Two, Oklahoma Nurses Association, in Tulsa, March 11, 1952.

Responsible for the splendid annual meeting of the Oklahoma Academy of General Practice in Tulsa, March 16-19, were DR. W. D. HOOVER, General Chairman, DR. MARSHALL O. HART, President of the Tulsa Academy of General Practice, and the Arrangements Committee composed of DR. N. C. RILEY, DR. LOWELL L. STOKES, DR. FRED PERRY, DR. PAUL E. CRAIG, DR. WENDELL L. SMITH, DR. MILTON L. BERG, DR. W. B. BOONE, DR. F. L. FLACK, and DR. CHARLES E. WILBANKS. Dr. Hoover was elected a Director of the Oklahoma Academy and Dr. Hart Alternate Delegate.

DR. and MRS. RALPH A. MCGILL are planning a three-months tour of Europe beginning April 15, 1952.

DR. A. B. CARNEY has been named Vice-Chairman of the Public Health Committee of the Tulsa Chamber of Commerce.

DR. J. JEFFREY BILLINGTON has removed his practice to Waldron, Ark.

DR. CHARLES H. EADS, DR. L. C. NORTHRUP, and DR. HERBERT S. ORR were participants in a roundtable discussion on Endometriosis for Junior and Senior students at the University of Oklahoma School of Medicine, March 12, 1952.

It's a boy for DR. and MRS. ROBERT F. MCCRARY, born March 17th.

# AL MUSICK DRUG CO.

---

*Your Suburban Prescription Pharmacy*

529 NORTH DENVER

PHONE 5-7288

*Serving Tulsa's  
North-Side  
Prescription Needs*

CITY-

WIDE

DELIVERY

*over* **35** *years*

of

**PRESCRIPTION SERVICE**

to Tulsa Doctors



Our modern delivery equipment assures your patients prompt efficient service.

## **RALEY - SHADDOCK**

### **PRESCRIPTION PHARMACY**

1325 East 15th

Ph. 4-3133

## **MEDICAL SERVICE SOCIETY OF AMERICA**

### Membership Roster, Tulsa Chapter

<i>Name:</i>	<i>Representing:</i>	<i>Telephone:</i>
Barney C. Beck	Eli Lilly Company	7-6679
William A. Cates	E. R. Squibb Co.	7-1267
Newton E. Cunningham	Ayerst, McKenna, Harrison	6-3678
C. R. Doran	Lakeside	Claremore
Carl Gibson	William S. Merrill Co.	7-1818
R. C. Gooch	Abbott Laboratories	9-4389
J. L. Hedges	Massengill	6-8538
E. C. Jeep	Lederle Laboratories	4-1216
C. M. (Mike) Kelly	National Drug Co.	2-0015
A. L. Kessler	Pitman-Moore Co.	7-0227
Kyle Lloyd	Wyeth, Inc.	5-1882
Ralph L. Miller	Hoffman-LaRoche	6-2928
Tom Sellers	G. D. Searle	9-7361
Gene Thomas	Eli Lilly Company	8-1103
Bill Walker	Parke-Davis	4-9261
Preston Walker	Upjohn	7-6464
J. B. Waters	Winthrop-Stearns	9-4045



## BLOOD CENTER NEWS

Tulsa County Red Cross Blood Center  
602 South Cheyenne, Tulsa  
Dr. Mary V. Graham, Medical Director  
Telephone 5-3281

### DISTRIBUTION & REPLACEMENT REPORT

February, 1952

Hospital	Bloods Used	Replacements	% Repl.
St. John's	432½	209	40.8%
Mercy	8	2	25.0%
Hillcrest	146½	86	58.7%
Osteopathic	66	13	19.6%
Moton	13½	6	44.4%
Byrne	13	6	46.1%
Flower	2	0	00.0%
Broken Arrow	4	3	75.0%
Other	8	3	37.3%
Totals	693½	328	47.2%

A revision of the standards governing the acceptance of blood donors at the Tulsa County Red Cross Blood Center has recently been effected by the Blood Center Committee of the Tulsa County Medical Society in cooperation with the Intravenous and Parental Fluid committees of major hospitals. These standards, with which all doctors should familiarize themselves in order to properly advise patients and prospective donors, are as follows:

White and colored persons between the ages of 21 and 60 years are accepted as donors provided their general health is good. Donors between the ages of 18 and 21 are accepted with the written consent of either a parent or guardian. Those in this younger age group who are economically independent or who are living apart from their family, or who are members of the Armed Forces, are accepted without written consent. Donors must weigh a minimum of 110 pounds. Donors weighing slightly less than this amount may be accepted but are bled only in the amount of 250 cc. Systolic pressure must be between 100 and 200 mm of mercury. A diastolic pressure over 100 mm is checked by the Blood Center physician and any reading over 110 will disqualify the donor. Any marked tachy- or bradycardia or irregularity of the pulse is checked by the doctor and the donor is accepted at his discretion. Persons with

undiagnosed but suspected heart disease are referred to their private physicians. Patients with a history of rheumatic fever are accepted if there is no history or finding of cardiac damage within two years. Donors with a history of proven malaria, gastric ulcer, jaundice of unknown etiology, tuberculosis, diabetes, or brucellosis are disqualified. Other rejections include persons with debilitating diseases, major surgery performed within six months, tooth extraction in the last 14 days, pregnancy or abortion within the last nine months, and positive serologic test for syphilis. In any case where there is doubt about bleeding a patient with a history of previous medication, the private physician is contacted and his wishes regarding the donor are followed. Persons with elevated temperature not clearly associated with upper respiratory infection, enlarged lymph nodes, and skin disorders are rejected and referred to their private physician. Repeat donors are accepted at intervals of three months.

Dr. Mary V. Graham, Medical Director at the Red Cross Blood Center for the past five months, has resigned to enter private practice effective May 1. She will continue on a part-time basis after that date until a replacement has been obtained.

*back again!*

the Original  
genuine

**ICHTHYOL®**

*Schering*

both concentrate  
and ointment

## APRIL MEDICAL CALENDAR

### TUESDAY, April 1st:

St. John's Tumor Clinic, 8:00 A.M.  
Blue Cross Hospital Insurance, Medical Assistants Group, quarterly premiums due and payable on this date at 1202 Medical Arts Building, Tulsa.

### THURSDAY, April 3rd

Second Session, Postgraduate Study Course, "A Review of General Medicine," Nurses Auditorium, St. John's Hospital, 7:30 P.M. Speakers: Dr. L. J. Starry, Oklahoma City, and Dr. Marion K. Ledbetter, Tulsa.

### FRIDAY, April 4th:

St. John's Tumor Clinic, Clinical Conference, 8:30 A.M.

### MONDAY, April 7th:

One-Day Meeting, Section of Obstetrics and Gynecology, Hillcrest Memorial Hospital, Tulsa, 8:00 A.M. See separate story, this issue of The Bulletin, for details.

### TUESDAY, April 8th:

St. John's Tumor Clinic, 8:00 A.M.

### WEDNESDAY, April 9th:

Board of Trustees Meeting, Tulsa County Medical Society, 1202 Medical Arts Building, Tulsa, 1:00 P.M.

### FRIDAY, April 11th:

St. John's Tumor Clinic, Clinical Conference, 8:30 A.M.

### MONDAY, April 14th:

Tulsa County Medical Society, Scientific Meeting, The Mayo, 8:00 P.M. Program: "Emotional Development of the Child," Dr. Hale F. Shirley, San Francisco, Calif.

### TUESDAY, April 15th:

St. John's Tumor Clinic, 8:00 A.M.  
Institute For Emotional Problems of Children, University of Tulsa, 9:30 A.M.  
For details see this issue of The Bulletin.  
Medical Assistants Society, Michaelis Cafeteria, 6:30 P.M.

### WEDNESDAY, April 16th:

Copy deadline for the May issue of The Bulletin.

### FRIDAY, April 18th

St. John's Tumor Clinic, Clinical Conference, 8:30 A.M.

### MONDAY, April 21st:

St. John's Hospital Staff Meeting.

### TUESDAY, April 22nd:

St. John's Tumor Clinic, 8:00 A.M.

### WEDNESDAY, April 23rd:

Tulsa County Medical Society, Monthly Luncheon, Alvin Hotel, 12:30 P.M.  
Program to be announced.

### THURSDAY, April 24th:

Third Session, Postgraduate Study Course, "A Review of General Medicine," Nurses Auditorium, St. John's Hospital, 7:30 P.M. Speakers: Dr. Kelly West, Oklahoma City, and Dr. M. J. Serwer, Oklahoma City.

### FRIDAY, April 25th:

St. John's Tumor Clinic, Clinical Conference, 8:30 A.M.

### MONDAY, April 28th:

Oklahoma Academy of General Practice, Tulsa Chapter, Scientific Program, Tulsa Hotel, 6:30 P.M. Program to be announced.

### TUESDAY, April 29th:

St. John's Tumor Clinic, 8:00 A.M.

Hear "Tell Me, Doctor" daily Monday through Friday, Radio Station KTUL, 5:15 P.M.

**"PREMARIN"**

Highly effective • Well tolerated • Imparts a feeling of well-being

**"PREMARIN"**

The menopausal patient  
welcomes the sense of well-being  
imparted by "Premarin."

**"PREMARIN"**

Estrogenic Substances (water-soluble)

**"PREMARIN"**



also known as Conjugated Estrogens (equine)

**"PREMARIN"**

5209



AYERST, McKENNA & HARRISON Limited • New York, N. Y. • Montreal, Canada

**CHILD INSTITUTE***(Continued From Page 8)*

Normal Child?" Doctors who are interested are welcome to attend other section meetings in the afternoon.

A complete program has been mailed to all members of the Tulsa County Medical Society. Registration will be in the Student Activity Building. A registration fee of \$1.00 is charged. Luncheon is \$1.50.

The Institute is jointly sponsored by the Health Division of the Tulsa Council of

*North and West***13TH AND MAIN***Telephone 4-3103***SCOTT ROBISON'S***Service***PRESCRIPTION  
STORES****15TH AND LEWIS***Telephone 9-6393**South and East*

Social Agencies, the Oklahoma State Department of Health, the Tulsa Child Guidance Clinic, and the Tulsa County Medical Society.

Dr. Frank J. Nelson will preside at the Section For Physicians. Dr. Shirley will also speak before the Tulsa County Medical Society on Monday evening, April 14. (See separate story this issue of *The Bulletin*).

**A NOTE OF THANKS**

The Tulsa Academy of General Practice wishes to thank the following firms for their kind donation of door prizes at the annual meeting of the Oklahoma Academy of General Practice in Tulsa, March 16-18:

Mohart Rexall Drug Store, Ozark Pharmacy, Admiral Pharmacy, Crown Drug Company, Raley-Shaddock Pharmacy, McRoberts-Lane Company, Bob Evans Drug Store, Dooley Drug Store, Grant G. Foysthe Surgical Supply Company, Frank Decatur White Food Market, E. R. Squibb & Sons, Al Musick Drug Store, McMichael Concrete Company, Spartan Drug Store, T. Roy Barnes Drugry, Ball Drug Store, Martin's Prescription Store, Scott Robison Prescription Stores, Getman Drug Store, Seidenbach's, Tri-State Pharmaceutical Co.

DR. I. H. NELSON was guest speaker for the Tulsa County Society of Medical Technologists on March 25th.

DR. MORRIS B. LHEVINE is vacationing in Israel.

DR. MARSHALL O. HART attended the American Academy of General Practice annual meeting in Atlantic City last month.

**SPECIAL PURPOSE FOODS**

LOW-SODIUM FOODS

LOW-CALORIE FOODS

DIABETIC FOODS

Phone 3-1106

*Akin's*

718 S. Boulder

# MEDICAL CREDIT BUREAU

*Official Collection Agency of  
The Tulsa County Medical Society*



**Tulsa's Finest Collection Service**

**1202 Medical Arts Bldg.  
Phone 3-6331**

# BALL DRUG STORE

College at Admiral

Ph. 6-2156, 9-9005



## DICK KELLO

Owner

*Covering East Tulsa  
with prompt  
Motor Delivery*

*Another Service For Busy Doctors*

## "GROWING UP"

*A helpful 16-page illustrated booklet in crisp rhyme depicts everyday natural experiences of children. Contains short message to parents. Let us send you a supply for your waiting room.*

# DAIRY COUNCIL OF TULSA

312 Wright Building

Telephone 4-8280

Tulsa 3, Oklahoma

# HARVARD DRUG STORE

B. C. SHINN, Owner

PHONE 6-2186

*The  
Suburban  
Prescription  
Store*

FREE  
PRESCRIPTION  
DELIVERY  
3244 E. 11th St.  
Tulsa

# ST. JOHN'S HOSPITAL

*A Leading  
Institution*

*In  
Oklahoma  
Medicine*

1923 SOUTH UTICA  
TULSA, OKLAHOMA  
TELEPHONE  
7-3361

*We are professional ethical pharmacists  
prepared to serve your every prescription  
need.*

2110 South Utica

Telephone 3-8169

---

# *Professional*

# DRUG SHOP

---

D. L. KINCAID  
(Kinney)

RAYMOND EWERS

*Be Certain with Curtain*

# CURTAINS PRESCRIPTION LABORATORY

SIXTH AND BOULDER

PHONE 4-7116

*Across the Street North From Medical Arts Bldg.*



For Nursing In The Home, Call Community Nursing  
 Service At The Public Health Association  
 808 South Peoria Telephone 5-3238

## *Professional Directory*

S. Y. ANDELMAN, M.D.  
 Diagnosis & Treatment of  
 Arthritis & Rheumatic Diseases  
 1611 South Boston Ph. 2-3885

BERGET H. BLOCKSOM, M. D.  
 MAXWELL A. JOHNSON, M. D.  
 Urologists  
 Diplomates, American Board of Urology  
 517 Medical Arts Bld. Ph. 54-1888

ROBERT L. ANDERSON, M.D.  
 Thoracic Surgery, Bronchoscopy,  
 and Esophagoscopy  
 807 Medical Arts Bldg. Tulsa

MANUEL BROWN, M. D.  
 Allergic Diseases  
 1619 E. 15th Street Ph. 54-5552

## Professional Directory

**TERRELL COVINGTON, JR., M.D.**  
 Internal Medicine  
 Consultation      Gastroscopy  
 223 Court Arcade Bldg.      Ph. 3-2724

**HARRY GREEN, M.D.**  
 Diseases of the Skin  
 X-Ray & Radium Therapy  
 311 Medical Arts Bldg.      Ph. 4-7585

**SAMUEL E. FRANKLIN, M. D.**  
 General Surgery  
 1619 E. 15th Street      Ph. 3-2109

**MARSHALL O. HART, M.D.**  
 General Practice  
 1228 South Boulder      Ph. 2-5904

**ROBERT E. FUNK, M.D.**  
 Practice Limited to Internal Medicine  
 212 Medical Arts Bldg.      Tulsa

**JAMES W. KELLEY, M.D., F.A.C.S.**  
 Plastic and Reconstructive Surgery  
 206 Philtower Bldg.      Tulsa

**JOHN F. GRAY, JR., M.D.**  
 Neuropsychiatry  
 1109 Medical Arts Bldg.      Ph. 2-7039

**WALTER S. LARRABEE, M.D.**  
 X-Ray Diagnosis & Therapy  
 Radium Therapy  
 411 Medical Arts Bldg.      Ph. 4-3111

# SPRINGER CLINIC

Sixth and Cincinnati

**Tulsa**

**Telephone 5-6621**

**Medicine**

D. O. Smith, M.D.  
 E. G. Hyatt, M.D.  
 H. A. Ruprecht, M.D.  
 Albert W. Wallace, M.D.  
 Vincel Sundgren, M.D.  
 Dean C. Walker, M.D.

**Neurology and Psychiatry**

Tom R. Turner, M.D.  
 Joe E. Tyler, M.D.

**Neurosurgery**

Averill Stowell, M.D.  
 Robert A. Hayne, M.D.

**Pediatrics**

G. R. Russell, M.D.

**General Surgery**

Carl J. Hotz, M.D.  
 William Pratt, M.D.

**Urology**

K. F. Swanson, M.D.  
 William F. Boyer, M.D.

**Ear, Nose and Throat**

Donald L. Mishler, M.D.

**Orthopedic Surgery**

Charles E. Brighton, M.D.

**Ophthalmology**

Otis S. Lee, M.D.

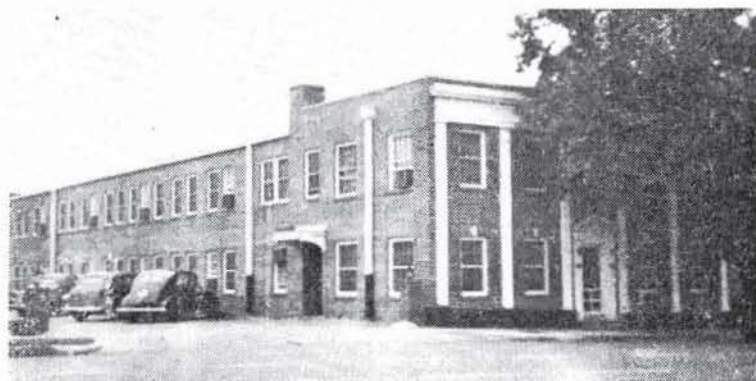
**Anesthesia**

M. R. Steel, M.D.



# Professional Directory

<p><b>E. N. LUBIN, M.D.</b>                  Diplomate, American Board of Urology                  Genito-Urinary Diseases                  303 Medical Arts Bldg.                  Office Ph. 3-6008 Res. Ph. 7-4388</p>	<p><b>IRON H. NELSON, M.D.</b>                  Clinical and Surgical Pathology                  1107 Medical Arts Bldg. Tulsa</p>
<p><b>JAMES D. MARKLAND, M.D.</b>                  Allergy                  411 Medical Arts Bldg. Ph. 4-3111</p>	<p><b>MARQUE O. NELSON, M. D.</b>                  Practice Limited to                  Dermatology Radium and X-Ray Therapy                  510 Medical Arts Bldg. Tulsa</p>
<p><b>RALPH A. MCGILL, M.D., F.A.C.S.</b>                  Surgery-Radium                  1010 Medical Arts Bldg. Ph. 4-4215</p>	<p><b>L. C. NORTHRUP, M.D., F.I.C.S.</b>                  Gynecology &amp; Obstetrics                  1307 S. Main Ph. 3-0151</p>
<p><b>EDWARD L. MOORE, M.D., F.A.C.S.</b>                  Surgery                  Diplomate, American Board of Surgery                  215 Braniff Bldg.                  Ph. 3-4789 Res. Ph. 7-1623</p>	<p><b>HERBERT S. ORR, M.D.</b>                  Surgery and Obstetrics                  1645 East 15th Street Ph. 4-2658                  Hillcrest Exchange 3-6772</p>



## TULSA CLINIC

915 South Cincinnati

Surgery  
 Andre B. Carney, M.D.,  
 F.I.C.S., F.A.C.S.

Medicine  
 H. W. Ford, M.D.

Cardiology and  
 Internal Medicine  
 James C. Peters, M.D.

Internal Medicine  
 Craig S. Jones, M.D.

COMPLETE  
 CLINIC  
 FACILITIES

Telephone 4-0177

Miss Bettye Adams  
 Director

Neurology and  
 Internal Medicine  
 O. L. Hill, M.D.

X-Ray and  
 Gastro-enterology  
 Earl M. Lusk, M.D.

Eye, Ear, Nose and Throat  
 Robert I. Barickman, Jr., M.D.

# Professional Directory

<p><b>THE ORTHOPEDIC CLINIC</b> 619 South Main Street      <b>Tulsa</b> Practice Limited To Bone &amp; Joint Surgery</p> <p><b>JOHN E. McDONALD, M.D.</b> <b>FRANK A. STUART, M.D.</b> <b>JOHN C. DAGUE, M.D.</b></p>	<p><b>WADE SISLER, M.D.</b> Orthopedic Surgery 8th &amp; Elgin      <b>Ph. 5-3123</b></p>
<p><b>SIMON POLLACK, M.D., D.A.B.R.</b> Diagnostic and Therapeutic Radiology 316 Braniff Bldg.      <b>Ph. 2-7517</b></p>	<p><b>CHARLES G. STUARD, M.D.</b> Ophthalmology 221 Court Arcade Bldg.      <b>Ph. 4-3435</b></p>
<p><b>J. L. RICHARDSON, M.D.</b> Orthopedic &amp; Traumatic Surgery 19 West 10th St.      <b>Tulsa</b></p>	<p><b>LEON H. STUART, M.D., F.A.C.R.</b> X-Ray Diagnosis 1107 Medical Arts Bldg.      <b>Ph. 54-5348</b></p>
<p><b>HERSCHEL J. RUBIN, M.D.</b> <b>LEONARD L. KISHNER, M.D.</b> Diplomates, American Board of Pediatrics Diseases of Infants &amp; Children 1619 East 15th St.      <b>Tulsa</b></p>	<p><b>JAMES B. THOMPSON, M.D., F.A.C.S.</b> General Surgeon Diplomate, American Board of Surgery 316 Medical Arts Building      <b>Ph. 3-3318</b></p>
<p><b>MAURICE J. SEARLE, M.D.</b> Pediatrics Diplomate, American Board of Pediatrics 512 Medical Arts Bldg.      <b>Tulsa</b></p>	<p><b>TURNBOW &amp; RAY CLINIC</b> Surgery - Diagnostic and Therapeutic Blocks 3015 E. 15th Street <b>Ph. 9-6397      Ph. 9-6398</b></p>
<p><b>J. D. SHIPP, M.D.</b> Surgery and Diseases of the Colon and Rectum 708 Medical Arts Bldg.      <b>Tulsa</b></p>	<p><b>DRS. TRAINOR &amp; FIRST</b> Cardiology &amp; Electrocardiology <b>W. J. TRAINOR, M.D.</b> <b>SAFETY R. FIRST, M.D.</b> 1011 Medical Arts Bldg.      <b>Ph. 5-7545</b></p>
<p><b>W. A. SHOWMAN, M.D.</b> Dermatology 408 Medical Arts Bldg.      <b>Ph. 3-7789</b></p>	<p><b>ARNOLD H. UNGERMAN, M.D.</b> <b>MILFORD S. UNGERMAN, M.D.</b> Diagnosis &amp; Treatment of Nervous and Mental Diseases 404 Medical Arts Bldg.      <b>Ph. 2-3151</b></p>
<p><b>F. D. SINCLAIR, M.D., F.A.C.S.</b> Certified American Board of Obstetrics &amp; Gynecology 307 Medical Arts Bldg.      <b>Ph. 5-5337</b></p>	<p><b>R. M. WADSWORTH, M.D.</b> Pediatrics 1445 S. Quaker      <b>Ph. 3-4300</b></p>
	<p><b>J. E. WALLACE, M.D.</b> Gynecology 1328 S. Peoria      <b>Ph. 3-2383</b></p>



For  
RADIANT HEALTH  
BUOYANT ENERGY  
SOUND BONES  
BEAUTIFUL TEETH

We Recommend

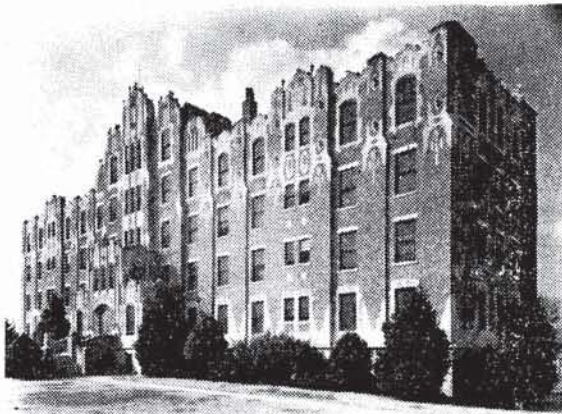
# Homogenized 'VITAMIN D' MILK

Fortified With 400 U.S.P. Units  
Vitamin D Per Quart, By Vitex Process

## Beatrice Foods Co.

215 North Denver

Telephone 4-2471



*One of Oklahoma's  
finer hospitals*

1653 East Twelfth St.

Telephone 3-2131

TULSA, OKLAHOMA

# HILLCREST MEMORIAL HOSPITAL

Tulsa County Medical Society  
1202 Medical Arts Building  
Tulsa 3, Oklahoma

Sec. 34.66 P. L. & R.

U. S. POSTAGE

**PAID**

TULSA 3, OKLA.

PERMIT No. 13

(Return Postage Guaranteed)

417 EAST THIRD

TELEPHONE 2-2450

## **COMMERCIAL PRINTING COMPANY**

Serving dozens of Tulsa doctors and clinics in the printing of fine quality letterheads, statements, envelopes, prescription blanks, case histories.

### **MERKEL X-RAY CO.**

*Distributor For*

Westinghouse X-Ray Equipment  
Physical Therapy Equipment



Complete Stock  
X-Ray and Physical Therapy  
Supplies



TULSA

1114 S. Bou'der

Tel. 2-4897

OKLAHOMA CITY

21 Broadway Circle

Tel. 2-3522

### **MID-CONTINENT SURGICAL SUPPLY CO.**

*The Complete  
Surgical Supply Store*

Hospital and Physicians  
Equipment and Supplies  
X-Ray Equipment

We carry a complete stock of instruments, rubber goods, surgical dressings, sutures, laboratory supplies, and sick-room needs.

PHONE 2-8169

TULSA

1330 SOUTH BOSTON