

JUN 22 1951
LIBRARY
TULSA COUNTY MEDICAL SOCIETY



THE BULLETIN

of the Tulsa County Medical Society

Roster Issue



IN THIS ISSUE



Ada Urologist Heads
State Medical Association



Tulsa Medical Directory



Annual Membership Roster
Tulsa County Medical Society



The Medical Library

It's Your
RED CROSS
BLOOD CENTER
Encourage Donors

July, 1951

Vol. 17

No. 7

For new variety in flavor. . . for wider clinical usefulness

The PABLUM family now includes 4 precooked infant cereals



Now under the one trusted name PABLUM® you may prescribe *four* precooked infant cereals.

The original Pablum, world's first precooked enriched cereal, is now PABLUM MIXED CEREAL. Pabena® is now PABLUM OATMEAL. And two new Pablum cereals are available—PABLUM RICE CEREAL and PABLUM BARLEY CEREAL.

A new manufacturing process brings out the full, rich flavor of all the Pablum cereals.

New packages, designed for superior protection, safeguard flavor and freshness.



Only Pablum cereals have the new "Handy-Pour" spout that opens and closes with a flick of the finger.

Pablum Oatmeal, Rice and Barley cereals provide welcome variety of flavor and are indicated when physicians prefer a single grain cereal.

If allergies are involved, Pablum Rice Cereal is especially valuable for patients of any age.

Behind all four Pablum Cereals are the experience and the reputation of Mead Johnson & Company, for almost half a century pioneers in nutritional research.



MEAD JOHNSON & CO.
EVANSVILLE 21, IND., U. S. A.

GETMAN'S

ROY R. GETMAN, Founder



Store Number One
MAIN & 6TH
Telephone 3-6171

Store Number Two
4606 EAST 11TH
Telephone 9-5233

"INGREDIENTS"

No medicine of compounded prescription can be any better than "the things of which it is made". We have "the things" you need — when you need them! And you may be certain that your orders are followed "to the letter".

FREE DELIVERY NIGHT AND DAY.

WE GIVE S & H GREEN STAMPS

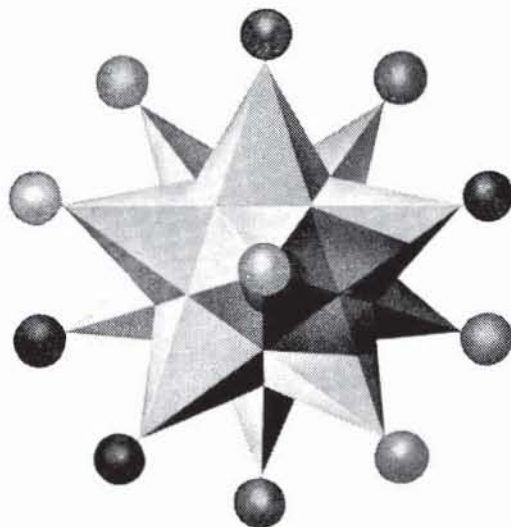
Sponsors of the "Tell Me, Doctor" Radio Broadcasts at 5:15 P.M. each Monday through Friday, KTUL, prepared by The Oklahoma State Medical Association.

CONTENTS

Ada Urologist To Head OSMA.....	7
President's Page.....	8
Annual Membership Roster.....	9
Tulsa Medical Directory.....	13
The Medical Library.....	17
Editorial	18
Dr. W. M. Jones Obituary.....	20
Personals	22
An Appeal For Help.....	22

ADVERTISERS

Akin's Natural Foods.....	27
Ayerst, McKenna & Harrison.....	21
Ball Drug Company.....	26
Beatrice Foods, Inc.....	31
Coca Cola	4
Commercial Printing Co.....	32
Courtright-Optician	23
Curtain's Prescription Laboratory.....	32
Daricraft	22
Dairy Council of Tulsa.....	31
Eli Lilly & Company.....	6
Getman Drug Store.....	5
Harvard Drug Store.....	20
Hillcrest Hospital	23
Junior League Home	25
Mead Johnson & Company.....	2
Medical Arts Prescription Shop.....	15
Medical Credit Bureau.....	24
Medical Service Society.....	16
Merkel X-Ray Co.....	32
Mid-Continent Surgical Supply Co.....	32
Al Musick Drug.....	19
Professional Directory.....	27
Professional Drug Shop.....	4
Public Health Association.....	26
Raley-Shaddock Pharmacy	16
Schering Corporation	3
Scott Robison's Drug Store.....	20
Springer Clinic	28
St. John's Hospital.....	26
T. Roy Barnes Drugry.....	24
Tulsa Clinic	29



CARBO-RESIN

(SODIUM REMOVING RESINS, LILLY)

begins a new era of edema control

Ordinary table salt, so necessary to the acceptability of food, may now be permitted more liberally to patients with acute congestive heart failure and to others whose retention of sodium is excessive.

The two cation exchange resins in 'Carbo-Resin' capture and effectively remove undesired sodium. One of them also prevents the depletion of potassium by making a supply available for absorption. An additional ingredient, a special anion exchange resin, helps the other resins to remove more sodium. Moreover, it is especially important because it lessens the hazard of acidosis that may occur when cation resins are used alone.

Edema may be controlled by 'Carbo-Resin' with only moderate restriction of sodium. This new regimen makes it possible for injections of diuretics to be given less frequently or often eliminated. In those cases in which mercurials are contraindicated, 'Carbo-Resin' can provide an alternate treatment.

Details on dosage and other important information on 'Carbo-Resin' may be obtained from your Lilly medical service representative or by writing to

ELI LILLY AND COMPANY



INDIANAPOLIS 6, INDIANA, U.S.A.

THE BULLETIN

OF THE

TULSA COUNTY MEDICAL SOCIETY

W. A. Showman, M.D., *President*Marshall O. Hart, M.D., *President-Elect*John G. Matt, M.D., *Vice-President*Harold J. Black, M.D., *Secretary-Treasurer*Jack Spears, *Executive Secretary*

Vol. 17

TULSA, OKLAHOMA, JULY, 1951

No. 7

ADA UROLOGIST TO HEAD STATE GROUP

**Success Of Annual Meeting Of Oklahoma State
Medical Association Noted By House Of Delegates.
Dues For 1952 Again Fixed At \$42.00.**

Dr. Alfred R. Sugg, Ada urologist and prominent leader in Oklahoma medical circles, was named President-Elect of the Oklahoma State Medical Association at the organization's annual meeting in Tulsa last May 20-23. He will serve as President in 1952-53, succeeding Dr. L. Chester McHenry of Oklahoma City.

Other officers named by the House of Delegates include Dr. Allen G. Gibbs, Oklahoma City, Vice-President; Dr. John F. Burton, Oklahoma City, reelected as Delegate to the American Medical Association; and Dr. Clinton Gallaher, Shawnee, Speaker of the House of Delegates. The Tulsa County delegation renamed Dr. Victor K. Allen as Councilor from the Eighth District (comprising Tulsa County only) with Dr. John E. McDonald as Vice-Councilor. Nominated as Vice-President, Dr. Allen withdrew from consideration because of other professional responsibilities.

Dr. Sugg's election came as part of the 58th Annual Meeting of the Oklahoma State Medical Association in Tulsa at The Mayo. A record attendance of 905 gave the convention the greatest number of visitors in Association history. Dr. Robert E. Funk of Tulsa, General Chairman, attributed part of the record registration to a splendid scientific program sparked by a panel of distinguished visiting guest speakers and partly to a program of social events. Highlighting the latter was the President's Annual Dinner Dance featuring Dr. R. B. Robins of Camden, Arkansas, Vice-President of the American Medical Association, as speaker, and dancing

to the music of Dick Jurgens and His Orchestra. This event was attended by 413 persons.

In a comparatively quiet session of the House of Delegates, most business was routine and uneventful. Following an executive session of the House, it was announced to the press that the Association would seek a tightening of medical licensure laws to require a basic science certificate of all medical doctors and osteopaths entering the State by reciprocity. A standard examination in the basic sciences would be given by a single examining board. The plan would require sanction of the Oklahoma State Legislature at its next session in 1953. Proponents of the plan pointed out that a similar system is now in operation in many states.

Delegates voted down a recommendation of the Council that two sessions of the House be held each year. Annual membership dues in the Oklahoma State Medical Association for 1952 were again fixed at \$42.00. To this sum must be added, under requirements of the By-Laws, the amount of the annual dues to the American Medical Association. The latter were fixed by the AMA House of Delegates at its annual meeting at Atlantic City on June 11, but this information was not available at the early press deadline of this issue of The Bulletin. AMA dues were expected to be continued at the constitutional limitation of \$25.00 per year.

The House also commended the work
(Continued On Page 20)

PRESIDENT'S PAGE

I am pleased to note a growing sympathy among Oklahoma doctors for the purposes and efforts of the Grievances Committee of the Oklahoma State Medical Association, and I believe this public relations project now bears the support of the majority of the members of the profession. Like all things which are new and untried, it was looked upon with some suspicion and uncertainty at the outset. This has gradually given way to an understanding of its objectives and an appreciation for what it accomplishes public relations-wise with the general public. Our doctors have found it means no sacrifice of individual privileges and that frequently it has been the means of creating harmony between doctor and patient where discord and bitterness may have existed before. There has been no wholesale use of the services of the Committee, and this in itself has illustrated that the majority of the people are completely satisfied with their doctor, his services, and his fees. The cooperation which has been given to the Committee has been generally excellent, and this has invariably been given in the interests of correcting a bad situation rather than through fear of any reprisals.

Our own Tulsa County Medical Society has such a committee now in existence, formulated at the direction of the Board of Trustees and consisting of the immediate five past-presidents of the Society. It is attempting to confine those grievances which may arise to the local level. The success of this Committee will depend essentially upon a same high degree of doctor cooperation being extended to its sincere efforts. To me, it is better that we handle these things ourselves, not only as a matter of policy but in the interests of own public relations here in Tulsa. For that reason I urge your sincere cooperation and support to this new project. I believe it will pay important dividends to our Tulsa profession.

Sincerely,



President

OFFICIAL MEMBERSHIP ROSTER TULSA COUNTY MEDICAL SOCIETY

ACTIVE MEMBERS

Doctor	Address	Telephone
Adams, George M.,	1419 E. 15th (Anes)	4-9637
Adams, Richard M.,	Interstate Oil Pipeline Co., Nat'l Bank of Tulsa Bldg. (Ind)	5-5581
Akins, Jack O.,	1101 Medical Arts Bldg. (U)	5-5646
Allen, Clifford W.,	706 Medical Arts Bldg. (NS)	2-0401
Allen, Victor K.,	1001 Medical Arts Bldg. (Proc)	3-0858
Andelman, Sumner Y.,	1611 So. Boston (I)	2-3885
Anderson, Robert L.,	807 Medical Arts Bldg. (Thoracic S)	3-0038
Apffel, Phillip Richard,	Child Guidance Clinic, 602 S. Cheyenne (Child P)	5-9676
Armstrong, O. C.,	902 Medical Arts Bldg.	4-4388
Atchley, Roger Q.,	507 Medical Arts Bldg. (S)	2-2239
Atkins, Paul N.,	1001 Medical Arts Bldg.	3-5295
Atkins, Paul N., Jr.,	210 Braniff Bldg. (S)	2-5159
Barham, J. H.,	Daniel Bldg.	3-9456
Beddoe, Harold L.,	Tulsa Police Department, 4th & Elgin	5-1211
Berg, Milton L.,	3505 S. Peoria	7-7515
Billington, J. Jeffrey,	Tulsa County Medical Clinic, 212 W. 6th	2-2619
Black, Harold J.,	416 Medical Arts Bldg.	4-9332
Blocksom, Berget H.,	901 Medical Arts Bldg. (U)	54-1888
Boone, Wilmot B.,	4117 S. 26th W.	5-0249
Boyd, Hugh L.,	Braniff Bldg.	2-0228
Boyer, William F.,	Springer Clinic, 604 S. Cincinnati (U)	5-6621
Bradfield, Samuel J.,	607 Medical Arts Bldg.	2-2328
Brighton, Charles E.,	Springer Clinic, 604 S. Cincinnati (Orth)	5-6621
Brocksmith, Henry A.,	Court Arcade Bldg. (I)	3-2038
Brogden, James C.,	801 Medical Arts Bldg. (S)	2-2516
Brown, Manuel,	1619 E. 15th (All)	54-5552
Brown, Walter E.,	Glass-Nelson Clinic, 2020 S. Xanthus (R)	7-3341
Browne, Henry S.,	615 Medical Arts Bldg. (U)	2-4515
Bryan, William J.,	801 Medical Arts Bldg. (I)	4-1011
Caldwell, Charles L.,	115 E. 18th	4-5651
Calhoun, C. E.,	Sand Springs, Oklahoma	S. S. 36
Calhoun, Walter H.,	1104 Medical Arts Bldg.	4-6233
Capehart, John D., Jr.,	814-A N. Osage Drive	5-7767
Capehart, Maurice P.,	706 Medical Arts Bldg. (NS)	2-0401
Carney, Andre B.,	Tulsa Clinic, 915 S. Cincinnati (S)	4-0177
Chalmers, J. S.,	Sand Springs, Oklahoma (Ind)	S.S. 100
Cohenour, Howard M.,	1151 S. Peoria (U)	2-7196
Coulter, Thomas B.,	1011 Medical Arts Bldg.	3-9963
Covington, Terrell, Jr.,	Court Arcade Bldg. (I)	3-2724
Craig, Paul E.,	411 Daniel Bldg.	4-9674
Crane, Donald V.,	1116 Medical Arts Bldg. (Oph)	4-4189
Crawford, William S.,	Carter Oil Co., Nat'l Bank of Tulsa Bldg. (Ind)	2-6101
Cubler, Edward W.,	St. John's Hospital, 1923 S. Utica (Anes)	7-4268
Dague, John C.,	412 Tri-State Insurance Bldg. (Orth)	5-5501
Daily, Raymond E.,	Bixby, Oklahoma	
Davis, Arthur H.,	710 Medical Arts Bldg. (EENT)	2-3045
Davis, George M.,	Bixby, Oklahoma	
Davis, Thomas H.,	Glass-Nelson Clinic, 2020 S. Xanthus (S)	7-3341
Dean, W. A.,	607 Medical Arts Bldg. (Ob)	3-3900
Denney, Lawrence A.,	1645 E. 15th	4-8597
Donovan, Mark H.,	Perry Clinic, 222 E. 5th (Ped)	5-5508
Eads, Charles H.,	609 Medical Arts Bldg. (Ob-Gyn)	3-1330
Echols, Raymond S.,	St. John's Hospital, 1923 S. Utica (Anes)	7-4268
Edwards, D. L.,	Glass-Nelson Clinic, 2020 S. Xanthus (Oph)	7-3341
Etherton, Monte C.,	10-A South Lewis	4-6663
Evans, Hugh J.,	216 Medical Arts Bldg. (EENT)	2-4268
Ewell, William C.,	1307 S. Main (Ob)	3-0151
Ferraro, Douglas T.,	201 Stanolind Bldg.	2-5143
First, Safety R.,	1011 Medical Arts Bldg. (Cardiac)	5-7545
Flack, F. L.,	McFarlin Bldg. (Ind-S)	3-2612

Doctor	Address	Telephone
Ford, H. W.,	Tulsa Clinic, 915 S. Cincinnati	4-0177
Forrest, Herbert J.,	1419 E. 15th (S)	4-9637
Forry, Willis W.,	Bixby, Oklahoma	
Franklin, Onis,	Broken Arrow, Oklahoma	
Franklin, Samuel E.,	1619 E. 15th (S)	3-2109
Fulcher, Joseph,	1151 S. Peoria (U)	2-7196
Funk, Robert E.,	212 Medical Arts Bldg. (I)	4-1159
Gaddis, N. C.,	1530 S. Peoria (I)	4-5978
Garrett D. L.,	701 Medical Arts Bldg. (S)	4-1900
Gastineau, Felix T.,	205 Medical Arts Bldg. (Oph)	4-2416
Gilliland, Charles E.,	Court Arcade Bldg. (I)	3-2664
Glass, Fred A.,	Glass-Nelson Clinic, 2020 S. Xanthus (S)	7-3341
Goddard, R. K.,	Skiatook, Oklahoma	
Goen, Rayburne W.,	303 Braniff Bldg. (I-C&L)	5-5559
Goodman, Samuel,	603 Medical Arts Bldg. (I)	4-3141
Gorrell, John Franklin,	1109 Medical Arts Bldg. (EENT)	3-5378
Graham, Hugh C.,	1307 S. Main (Ped)	5-3455
Gray, John F., Jr.,	1109 Medical Arts Bldg. (NP)	2-7039
Green, Harry,	311 Medical Arts Bldg. (Derm)	4-7585
Grosshart, Paul L.,	302 Medical Arts Bldg. (S)	3-5600
Grubb, Robert D.,	1307 S. Main (I)	3-0151
Guild, Carl H.,	1419 E. 15th (Anes)	4-9637
Haney, T. Paul,	Tulsa City-County Health Dept., 521 N. Boulder (PH)	4-2138
Haralson, Charles H.,	310 Medical Arts Bldg. (Oph)	3-0873
Hardman, Thomas J.,	502 Medical Arts Bldg. (S)	2-5684
Harris, Bunn, Jenks,	Oklahoma	
Hart, Mabel M.,	Tulsa County Red Cross Blood Center, 602 S. Cheyenne	5-3281
Hart, Marshall O.,	1228 S. Boulder	2-5904
Hayne, Robert A.,	Springer Clinic, 604 S. Cincinnati (NS)	5-6621
Hays, Luvern,	2445 E. 27th Pl. (Ped)	7-3788
Henderson, William N.,	1415 E. 15th (Ob-Gyn)	5-7797
Henley, Marvin D.,	911 Medical Arts Bldg. (EENT)	2-6358
Henry, Gifford H.,	212 Court Arcade Bldg. (S)	3-1878
Hill, O. L.,	Tulsa Clinic, 915 S. Cincinnati	4-0177
Hoke, C. C.,	Philtower Bldg. (S)	2-8372
Hoover, W. D.,	201 Stanolind Bldg.	2-5143
Hotz, Carl J.,	Springer Clinic, 604 S. Cincinnati (S)	5-6621
Huber, Walter A.,	205 Medical Arts Bldg. (Oph)	4-2416
Hudson, David V.,	Tulsa Cooperative Clinic, 521 N. Boulder (PH)	4-6672
Hudson, Margaret G.,	City Health Dept., 521 N. Boulder	4-2138
Humphrey, B. H.,	Sperry, Oklahoma	
Hyatt, E. G.,	Springer Clinic, 604 S. Cincinnati (I)	5-6621
Johnson, E. O.,	209 Medical Arts Bldg. (Ob-Gyn)	4-2010
Johnson, Maxwell A.,	Glass-Nelson Clinic, 2020 S. Xanthus (U)	7-3341
Johnson, R. Chadwick,	Sand Springs, Okla.	S.S.102
Johnson, R. R.,	Sand Springs, Oklahoma	S.S. 102
Johnson, Robert Hall,	Glass Nelson Clinic, 2020 S. Xanthus (Orth)	7-3341
Jones, Craig S.,	Tulsa Clinic, 915 S. Cincinnati (I)	4-0177
Jones, Delmas B.,	411 Medical Arts Bldg. (R)	4-3111
Kelley, James W.,	206 Philtower Bldg. (Plastic S)	3-4730
Kemmerly, H. P.,	1419 E. 15th (Anes)	4-9637
Kishner, Leonard L.,	1619 E. 15th (Ped)	54-5273
Kornblee, A. T.,	916 Medical Arts Bldg. (Derm)	54-5661
Kramer, Allen C.,	607 Medical Arts Bldg.	3-8874
Larrabee, Walter S.,	411 Medical Arts Bldg. (R)	4-3111
Layton, O. E.,	Collinsville, Oklahoma	
Lee, J. K.,	Court Arcade Bldg. (I)	2-8484
Lee, Otis S.,	Springer Clinic, 604 S. Cincinnati (Oph)	5-6621
LeMaster, D. W.,	902 Medical Arts Bldg.	5-7925
Lhevine, Morris B.,	B-7 Medical Arts Bldg. (R)	3-5294
Lindstrom, W. Carl,	1001 Medical Arts Bldg. (Ob-Gyn)	3-1413
Loney, William R. R.,	304 Medical Arts Bldg. (Ob)	4-9023
Lowe, J. O.,	Thompson Bldg.	2-6462
Loyd, H. O.,	Court Arcade Bldg. (I)	3-8860
Lubin, Emanuel N.,	1106 Medical Arts Bldg. (U)	3-6008
Lusk, Earl M.,	Tulsa Clinic, 915 S. Cincinnati (Ob-Gyn)	4-0177
Lyons, Mason R.,	Turley, Oklahoma	5-5451
MacDonald, D. M.,	1531 E. 15th (Ob-Gyn)	4-5626
MacKenzie, Ian,	1104 Medical Arts Bldg. (Orth)	2-3412

Doctor	Address	Telephone
Margolin, Berthe,	2739 E. 22nd (Anes)	7-5433
Markland, James D.,	411 Medical Arts Bldg. (All)	4-3111
Martin, Ralph F.,	Sand Springs, Oklahoma	S.S. 1260
Matt, John G.,	1001 Medical Arts Bldg. (Proc)	2-1014
McDonald, John E.,	412 Tri-State Insurance Bldg. (Orth)	5-5501
McDowell, Richard E.,	Perry Clinic, 222 E. 5th (S)	5-5508
McGill, Ralph A.,	1010 Medical Arts Bldg. (S)	4-4215
McGraw, Willard L.,	1332 S. Lewis	9-0888
Mery, Albert M.,	Braniff Bldg. (I)	5-5559
Miller, Elnora G.,	McBirney Bldg.	2-8813
Miller, George H.,	Atlas Life Bldg. (S)	2-6669
Mishler, Donald L.,	Springer Clinic, 604 S. Cincinnati (Oto)	5-6621
Mitchell, Tom Hall,	Carter Oil Company, Nat'l Bank of Tulsa Bldg. (Ind)	2-6101
Moore, Edward L.,	Braniff Bldg. (S)	3-4789
Mulmed, Earl I.,	Braniff Bldg. (I)	54-3028
Munding, L. A.,	1001 Medical Arts Bldg.	4-0964
Murdock, H. D.,	1011 Medical Arts Bldg. (S)	3-5915
Murray, P. G.,	506 Medical Arts Bldg. (Ob)	3-2867
Murray, Silas,	501 Medical Arts Bldg. (Ob)	2-8090
Neal, James H.,	City Health Dept., 521 N. Boulder (PH)	4-2138
Nelson, F. L.,	Atlas Life Bldg. (S)	3-7873
Nelson, Frank J.,	Glass-Nelson Clinic, 2020 S. Xanthus (I)	7-3341
Nelson, I. H.,	1107 Medical Arts Bldg. (Path)	4-1835
Nelson, Maroue O.,	510 Medical Arts Bldg. (Derm)	4-3532
Newlin, W. H.,	Broken Arrow, Okla.	
Nicholas, Hugh B.,	1918 N. Oxford	8-3721
Northrup, Laurence C.,	1307 S. Main (Ob-Gyn)	3-0151
Orr, Herbert S.,	1645 E. 15th (S)	5-8135
Palik, Emil E.,	St. John's Hospital, 1923 S. Utica (Path)	7-3361
Park, Felix R.,	401 Medical Arts Bldg. (I)	2-9589
Parmenter, Derric C.,	1204 S. Cheyenne	2-1053
Pascucci, Lucien,	St. John's Hospital, 1923 S. Utica (R)	7-3361
Pavy, Chester A.,	801 Medical Arts Bldg. (EENT)	4-3207
Peden, James C.,	612 Medical Arts Bldg.	2-9018
Perry, Daniel L.,	Perry Clinic, 222 E. 5th	5-5508
Perry, Fred J.,	214 Braniff Bldg.	4-1472
Perry, Hugh,	Perry Clinic, 222 E. 5th (S-Ob)	5-5508
Perry, John C.,	808 Medical Arts Bldg. (S)	2-7622
Peters, James C.,	Tulsa Clinic, 915 S. Cincinnati (I)	4-0177
Pollack, Simon,	216 Braniff Bldg. (R)	2-7517
Porter, Horace H.,	1419 E. 15th	4-1272
Pratt, William C.,	Springer Clinic, 604 S. Cincinnati (S)	5-6621
Ray, R. G.,	Tulsa Clinic, 915 S. Cincinnati	4-0177
Reese, K. C.,	1102 Medical Arts Bldg. (Ped)	3-1114
Reynolds, E. W.,	1307 S. Main	4-4877
Rhodes, Robert E. Lee,	2220 S. St. Louis	4-1787
Richardson, Jack Leahy,	19 W. 10th (Orth)	3-3822
Riley, Nolan C.,	507 Medical Arts Bldg.	2-2239
Roberts, T. R.,	Wright Bldg.	4-2833
Rogers, James W.,	406 Medical Arts Bldg. (U)	2-7735
Rubin, H. J.,	1619 E. 15th (Ped)	54-5273

KEY TO SYMBOLS

For purposes of information physicians who practice a major specialty are so indicated in the foregoing roster. The symbol following the name indicates the specialty practiced. However, this listing does not necessarily mean that the physician named limits himself strictly to that specialty.

All—Allergy	I—Internal Medicine	P—Psychiatry
Anes—Anesthesia	Ind—Industrial Medicine	PH—Public Health
C & L—Chest and Lungs	NP—Neuropsychiatry	Path—Pathology
Derm—Dermatology	NS—Neuro-Surgery	Ped—Pediatrics
EENT—Eye, Ear, Nose and Throat	Ob—Obstetrics	Proc—Proctology
Gyn—Gynecology	Oph—Ophthalmology	R—Radiology
	Orth—Orthopedics	S—Surgery
	Oto—Otolaryngology	U—Urology

Doctor	Address	Telephone
Ruprecht, Homer A.,	Springer Clinic 604 S. Cincinnati (I)	5-6621
Russell, G. R.,	Springer Clinic, 604 S. Cincinnati (Ped)	5-6621
Salamy, Joseph,	2523 E. 11th	9-9670
Sanger, Walter B.,	211 Medical Arts Bldg. (Ob-Gyn)	5-9063
Schreck, Phillip M.,	202 Medical Arts Bldg. (I)	4-8409
Searle, Maurice J.,	512 Medical Arts Bldg. (Ped)	4-2901
Sethney, Walter F.,	2828 E. 15th (Ped)	9-3987
Shapiro, David,	1101 E. 15th	2-0178
Shepard, R. M.,	305 Medical Arts Bldg. (C&L)	4-1821
Shepard, Robert M., Jr.,	902 Medical Arts Bldg. (S)	2-1473
Shepard, S. C.,	406 Medical Arts Bldg. (I)	3-7023
Sherwood, R. G.,	Court Arcade Bldg.	3-9849
Shipp, J. D.,	708 Medical Arts Bldg. (Proc)	4-5670
Showman, W. A.,	409 Medical Arts Bldg. (Derm)	3-7789
Simpson, Carl F.,	502 Medical Arts Bldg. (Ob)	2-5403
Sinclair, Franklin D.,	307 Medical Arts Bldg. (Ob-Gyn)	5-5337
Sippel, Mary Edna,	1544 E. 15th	2-8560
Sisler, Wade,	Mercy Hospital, 807 S. Elgin (Orth)	5-3123
Smith, D. O.,	Springer Clinic, 604 S. Cincinnati (I)	5-6621
Smith, Ruric N.,	1017 Medical Arts Bldg. (EENT)	3-3208
Smith, Wendell L.,	2431 E. Admiral	6-2380
Smith, William Orlando,	Tri-State Insurance Bldg. (EENT)	3-5194
Spann, Logan A.,	203 Braniff Bldg.	2-0216
Springer, M. P.,	Springer Clinic, 604 S. Cincinnati	5-6621
Stanley, M. V.,	17½ N. Lewis	9-8409
Steel, Marcella R.,	Springer Clinic, 604 S. Cincinnati (Anes)	5-6621
Stevenson, James,	615 Medical Arts Bldg. (Derm)	54-5562
Stewart, H. B.,	St. John's Hospital, 1923 S. Utica (Anes)	7-4268
Stokes, E. Malcolm,	1415 E. 15th (Ob-Gyn)	4-8557
Stokes, Lowell L.,	517 Medical Arts Bldg.	3-3581
Stowell, Averill,	Springer Clinic, 604 S. Cincinnati (NS)	5-6621
Strong, Paul T.,	Glass-Nelson Clinic, 2020 S. Xanthus (I)	7-3341
Stuard, Charles G.,	Court Arcade Bldg. (Oph)	4-3435
Stuart, Frank A.,	Tri-State Insurance Bldg. (Orth)	5-5501
Stuart, Leon H.,	1107 Medical Arts Bldg. (R)	54-5348
Stuart, Royal E.,	Glass-Nelson Clinic, 2020 S. Xanthus (Oto)	7-3341
Summers, C. S.,	611 Daniel Bldg.	3-9011
Sundgren, Vincel,	Springer Clinic, 604 S. Cincinnati (I)	5-6621
Swanson, Karl F.,	Springer Clinic, 604 S. Cincinnati (U)	5-6621
Thomas, William F., Jr.,	100 Braniff Bldg. (Ob-Gyn)	4-1642
Thompson, James B.,	316 Medical Arts Bldg. (S)	3-3318
Thompson, Oliver H.,	Court Arcade Bldg.	3-7444
Trainor, W. J.,	1011 Medical Arts Bldg. (I)	5-7545
Turnbow, William R.,	2112 W. 41st	9-6946
Turnbull, Theodore,	Perry Clinic, 222 E. 5th (I)	5-5508
Turner, Tom R.,	Springer Clinic, 604 S. Cincinnati (P)	5-6621
Tyler, Joe E.,	Springer Clinic, 604 S. Cincinnati (P)	5-6621
Underwood, David J.,	815 Medical Arts Bldg. (Ped)	3-7475
Underwood, F. L.,	1001 Medical Arts Bldg.	3-5514
Ungerma, Arnold H.,	404 Medical Arts Bldg. (P)	2-3151
Ungerma, Milford S.,	404 Medical Arts Bldg. (P)	2-3151
Wadsworth, R. M.,	1445 S. Quaker (Ped)	3-4300
Walker, Dean C.,	Springer Clinic, 604 S. Cincinnati (I)	5-6621
Walker, William A.,	1215 S. Utica	9-1259
Wallace, Albert W.,	Springer Clinic, 604 S. Cincinnati (I)	5-6621
Ward, Benjamin W.,	Wright Bldg. (S)	3-0081
White, Eric M.,	312 Medical Arts Bldg.	4-3552
White, Harold A.,	701 Medical Arts Bldg. (S)	4-1900
White, James W.,	1515 S. Boston (Ped)	2-4735
White, N. Stuart,	312 Medical Arts Bldg.	3-1181
Wilcox, Louise,	1645 E. 15th	4-8597
Wiley, A. Ray,	812 Medical Arts Bldg. (S)	3-0202
Williams, Theodore S.,	210 Medical Arts Bldg.	3-8443
Wilner, Sol,	B-7 Medical Arts Bldg. (R)	3-5294
Witcher, Robert B.,	909 Medical Arts Bldg.	2-4673
Wolff, Eugene G.,	St. John's Hospital, 1923 S. Utica (Anes)	7-4268
Woodson, Fred E.,	908 Medical Arts Bldg. (Anes)	2-8233
Yandell, Hays R.,	Glass-Nelson Clinic, 2020 S. Xanthus (S)	7-3341

APPLICATIONS PENDING

White, Wendell J., 108 Broadway, Sand Springs, Okla. S.S. 1260

LIFE MEMBERS

Childs, J. W., 501 Medical Arts Bldg.	4-6725
Farris, H. Lee, 303 Medical Arts Bldg. (S)	4-5538
Mohrman, Silas S., 1818 E. 15th	6-0959
Pigford, Russell C., Court Arcade Bldg. (I)	3-8860
Presson, L. C., 1948 N. Main	2-3383
Stallings, Thomas W., 724 S. Elgin (EENT)	5-7707
Wallace, J. E., 1328 S. Peoria (Gyn)	2-6501

HONORARY MEMBERS

Brookshire, J. E., Ritz Building	3-5094
Brown, Paul R., 1614 E. 35th	7-1781
Charbonnet, P. N., Boston Club, New Orleans, La.	
Clinton, Fred S., 230 Woodward Blvd.	3-0014
Cook, W. Albert, 1106 Medical Arts Bldg.	3-6008
Hall, Gilbert H., Rialto Bldg.	3-8316
Hooper, Joel S., U. S. Veterans Facility, Muskogee, Okla.	
Lynch, Thomas J., 2132 E. 24th	7-4172
Mayginnes, P. H., 1624 S. Norfolk	3-1244
Nesbitt, E. P., Sheridan, Missouri	
Nesbitt, P. P., 1565 Swan Drive	3-1730
Reynolds, J. L., 1616 N. Cincinnati	3-5659
Venable, Sidney C., 1757 S. Columbia	9-5863
Wall, Gregory A., 1202 N. Main	2-3710

MEMBERS ON POSTGRADUATE LEAVE

Buchan, William, Cleveland Clinic, Cleveland, Ohio	
Shackelford, Paul O., Lain-Lamb Clinic, Oklahoma City, Okla.	

MEMBERS IN MILITARY SERVICE

Bailey, Byron L., U. S. Navy Forces in Japan	
Dodd, Nevin W., U. S. Navy Forces in Japan	
Gorrell, Ben F., Sandia Base, 1228 Sandia Drive, Albuquerque, N. M.	
Wright, Kenneth L., Jr., Fort Sill, Okla.	

TULSA MEDICAL DIRECTORY

TULSA COUNTY MEDICAL SOCIETY

Executive Offices: 1202 Medical Arts Building, Tulsa 3, Oklahoma. Telephone 4-8161. Hours 8:30 A.M.-5:00 P.M. Monday through Friday, 8:30 A.M.-1:00 P.M. on Saturday. Mr. Jack Spears, Executive Secretary. Address all communications to this office.

Officers: Dr. W. A. Showman, President; Dr. Marshall O. Hart, President-Elect; Dr. John G. Matt, Vice-President; Dr. Harold J. Black, Secretary-Treasurer. Trustees: Dr. Robert E. Funk, Dr. Hugh C. Graham, Dr. Maurice J. Searle, Dr. John E. McDonald, and Dr. Thomas J. Hardman. Board of Censors: Dr. J. D. Shipp, Chairman, Dr. Thomas J. Hardman, and Dr. Walter S. Larrabee. Delegate to the Oklahoma State Medical Association Council, Dr. Victor K. Allen; Vice-Councilor, Dr. John E. McDonald.

Medical Library: 1203 Medical Arts Building, Tulsa 3, Oklahoma. Telephone 4-1461. Hours 9:00 A.M.-5:00 P.M. Monday through Friday, 9:00 A.M.-1:00 P.M. on Saturday; open Tuesday evenings, 6:00 P.M.-9:00 P.M. Miss Irma A. Beehler, Librarian. Dr. Thomas J. Hardman, Chairman, Medical Library Committee.

Medical Credit Bureau: 1201 Medical Arts Building, Tulsa 3, Oklahoma. Telephone 3-6331. Hours 8:30 A.M.-5:00 P.M. Monday through Friday, 8:30 A.M.-1:00 P.M. on Saturday. Mrs. Zelma Fink, Manager; Mrs. Joyce Richison, Mrs. Okla. Pottier, clerks. Dr. Paul Grosshart, Chairman, Medical Credit Bureau Committee.

The Bulletin: Address all communications concerning The Bulletin to Mr. Jack Spears, Managing Editor, Tulsa County Medical Society, 1202 Medical Arts Building, Tulsa 3, Oklahoma. Telephone 4-8161. Dr. Ralph F. Martin, Editorial Supervisor. Advertising rates and information upon request.

OKLAHOMA STATE MEDICAL ASSOCIATION

Executive Offices: 1227 Classen, Oklahoma City, Okla. Telephone 79-1648. Mr. Richard H. Graham, Executive Secretary. Mr. John K. Hart, Associate Executive Secretary. Officers: Dr. L. Chester McHenry, Oklahoma City, President; Dr. Alfred R. Sugg, Ada, President-Elect; Dr. Allen G. Gibbs, Oklahoma City, Vice-President; Dr. Lewis J. Moorman, Oklahoma City, Secretary-Treasurer; Dr. James Stevenson, Tulsa, and Dr. John F. Burton, Oklahoma City, Delegates to the American Medical Association.

The Journal: 1227 Classen, Oklahoma City, Okla. Dr. Lewis J. Moorman, Oklahoma City, Editor.

AMERICAN MEDICAL ASSOCIATION

Executive Offices: 535 North Dearborn, Chicago, Illinois. Dr. George F. Lull, General Manager. Address all communications, including fellowship dues and subscriptions to AMA publications not included in membership dues, to this office.

Washington Office: 1523 L Street NW, Washington 5, D. C. Dr. J. S. Lawrence, Director.

National Education Campaign: Whitaker & Baxter, One North LaSalle Street, Chicago, Illinois.

TULSA COUNTY HOSPITALS

Byrne Memorial Hospital. 1321 S. Peoria, Tulsa. Telephone 2-4114. Mrs. Bessie Byrne, Manager.

Flower Hospital. 523 N. Boulder, Tulsa. Telephone 2-2208. Mrs. K. K. Eason, Manager.

Franklin Hospital. Broken Arrow, Okla. Dr. Onis Franklin, Medical Director.

Hillcrest Lying-In Hospital. 1615 E. 12th Street, Tulsa. Telephone 2-8134. Mr. Bryce L. Twitty, Administrator.

Hillcrest Memorial Hospital. 1635 E. 12th Street, Tulsa. Telephone 3-2131. Mr. Bryce L. Twitty, Administrator. Dr. William C. Ewell, Chief of Staff.

Junior League Convalescent Hospital. 4900 S. Lewis Road, Tulsa. Telephone 7-3311. Mrs. Lee Mulhall, Administrator.

Medical & Surgical Hospital. 1307 S. Main, Tulsa. Telephone 3-0151. Dr. L. C. Northrup, Medical Director.

Mercy Hospital. 807 South Elgin, Tulsa. Telephone 5-3123. Dr. Wade Sisler, Medical Director.

Moton Memorial Hospital. 603 E. Pine, Tulsa. Telephone 4-8430. Dr. T. A. West, Administrator. For negro patients.

Salvation Army Home and Hospital. 7802 West 7th, Tulsa. Telephone 3-0927.

St. John's Hospital. 1923 S. Utica, Tulsa. Sister M. Agatha, Administrator. Dr. Phillip M. Schreck, Chief of Staff.

MEDICAL ORGANIZATIONS

City-County Health Department. 521 N. Boulder, Tulsa. Telephone 4-2138. Dr. T. Paul Haney, Superintendent.

City Schools Health Department. 1514 S. Quaker, Tulsa. Telephone 4-9642. Dr. Marcella R. Steel, Superintendent.

Group Hospital Service of Oklahoma. 315 S. Denver, Tulsa. Telephone 5-9141. Mr. N. D. Helland, Executive Director.

Medical & Dental Arts Building. 106 W. 6th Street, Tulsa. Telephone 4-4709. Mr. T. A. Hunt, Manager.

Medical License Register. County Clerk's Office, Courthouse, 6th & Boulder, Tulsa. Telephone 3-2321.

Oklahoma Division, American Cancer Society. Commerce Exchange Bldg., Oklahoma City, Oklahoma.

Oklahoma Medical Research Foundation. 815 NE 13th Street, Oklahoma City. Mr. Hugh L. Payne, General Manager.

Oklahoma Physicians Service. 315 S. Denver, Tulsa. Telephone 5-9141. Mr. N. D. Helland, Executive Director.

Oklahoma State Board of Medical Examiners. 813 Braniff Bldg., Oklahoma City, Okla. Dr. Clinton Gallaher, Secretary. Address all communications to this office.

Oklahoma State Department of Health. 3400 N. Eastern, Oklahoma City, Okla. Dr. Grady F. Mathews, Commissioner.

St. John's Tumor Clinic. 1923 S. Utica, Tulsa. Telephone 7-6130. Dr. Ralph A. McGill, Medical Director. Miss Lois Taylor, Secretary.

Tulsa Chamber of Commerce. Tulsa Bldg., Tulsa. Telephone 5-1201. Mr. Russell S. Rhodes, General Manager.

Tulsa Council of Sociay Agencies. 602 S. Cheyenne, Tulsa. Telephone 3-7171. Mr. Craig Berke, Executive Secretary.

Tulsa Child Guidance Clinic. 602 S. Cheyenne, Tulsa. Telephone 5-9676. Dr. P. R. Appfel, Medical Director.

Tulsa County Public Health Association. 807 S. Peoria, Tulsa. Telephone 5-3238. Mrs. Odessa Winters, Executive Director.

Tulsa County Heart Association. 807 S. Peoria, Tulsa. Telephone 5-3238.

Tulsa County Cancer Society. 412 Tri-State Insurance Bldg., Tulsa. Telephone 5-5501. Dr. John E. McDonald, President.

Tulsa County Cooperative Clinic. 521 N. Boulder, Tulsa. Telephone 4-6672. Dr. David V. Hudson, Medical Director. For treatment of venereal diseases.

Tulsa County Medical Clinic. 212 W. 6th Street, Tulsa. Telephone 3-2427. Dr. J. Jeffrey Billington, Medical Director. For treatment of indigent patients.

Tulsa County Red Cross Blood Center. 602 S. Cheyenne, Tulsa. Telephone 5-3281. Dr. Mabel M. Hart, Medical Director.

Tulsa's Better Prescription Service

Built upon the experience of a quarter of a century of service to Tulsa Medicine, the Medical Arts Prescription Shop offers accurate and reliable service to you and your patients—a BETTER service which reflects our reputation for quality.

**City-Wide
DELIVERY
Service**

**Your
Headquarters
For**

- PRESCRIPTIONS
- BIOLOGICALS
- SURGICAL SUPPLIES
- SICKROOM NEEDS
- PHARMACEUTICALS
- ORTHOPEDIC APPLIANCES

Medical Arts Prescription Shop

SIXTH AND BOULDER

TELEPHONE 4-0121



JAMES SHADDOCK



DEANE RALEY

Ethical Prescriptionists

FIFTEENTH AT QUAKER

Telephone 4-3133

Hours 8:00 A. M. - 10:00 P. M.

MEDICAL SERVICE SOCIETY OF AMERICA

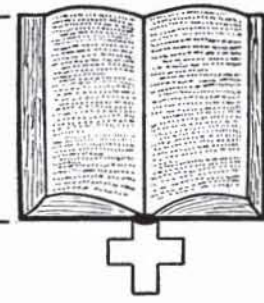
Membership Roster, Tulsa Chapter

<i>Name:</i>	<i>Representing:</i>	<i>Telephone:</i>
Barney C. Beck	Eli Lilly Company	7-6679
William A. Cates	E. R. Squibb Co.	7-1267
C. R. Doran	Lakeside	Claremore
Carl Gibson	William S. Merrill Co.	7-1818
R. C. Gooch	Abbott Laboratories	9-4389
J. L. Hedges	Massengill	6-8538
C. M. (Mike) Kelly	National Drug Co.	
Kyle Lloyd	Wyeth, Inc.	5-1882
Joe Loudonback	Flint-Eaton	7-1418
Ralph L. Miller	Hoffman-LaRoche	6-2928
R. Wayne Morrow	Bauer & Black	2-0598
Tom Sellers	G. D. Searle	9-7361
Gene Thomas	Eli Lilly Company	8-1103
Bill Walker	Parke-Davis	4-9261
Preston Walker	Upjohn	7-6464
J. B. Waters	Winthrop-Stearns	9-4045



THE MEDICAL LIBRARY

Library of the Tulsa County
Medical Society



Medical Library Committee:

Thomas J. Hardman, M.D., Chairman

Felix R. Park, M.D.

Robert E. Funk, M.D.

William R. Turnbow, M.D.

David V. Hudson, M.D.

Miss Irma A. Beehler, *Librarian*

Telephone 4-1461

GIFTS OF THE MONTH—:

Dr. Marshall O. Hart. Subscription to G P, 1951-52.

Dr. David V. Hudson. Science of Health by Florence L. Meredith, B.Sc., M.D., Fellow of the American Medical Association, the American Public Health Association, and the American Psychiatric Association. 2nd Edition, pp. 452, 48 tables and charts, 134 ill. Blakiston Company, Philadelphia, Pa., 1951.

J. A. Majors Company, Dallas, Texas. Textbook of Medicine, 8th Edition, edited by Russell L. Cecil, M.D., Sc. D., Professor of Clinical Medicine Emeritus, Cornell University, New York, and Robert F. Loeb, M.D., Bard Professor of Medicine, Columbia University, New York. Associate editors are Drs. Alexander B. Gutman, Walsh McDermott, and Harold G. Wolff. Pp. 1,627, illustrated, W. B. Saunders Company, Philadelphia, Pa., 1951.

U. S. Veterans Administration. Technical Bulletins (TB 10-16-70, 10-505), Series 10, Volume 4, 1950. Various pagination. U. S. Government Printing Office, Washington, D. C. (January) 1950.

U. S. Veterans Administration. Conference on Cortisone Research, A Symposium, August 15-16, 1950, Washington, D. C., with the cooperation of Merck and Company, Inc., Rahway, New Jersey, pp. 120, illustrated. Published by Merck and Company, Inc., 1951.

PUBLICATIONS BY MEMBERS OF THE TULSA COUNTY MEDICAL SOCIETY—:

Dr. Robert M. Shepard, Jr., and other. Thyroid Crisis. *American Surgeon*, 17:406-418 (May) 1951.

Dr. Hays R. Yandell. Treatment of Extensive Burns. *American Surgeon*, 17:351-356 (April) 1951.

Proceedings of the Staff Meeting of Hillcrest Memorial Hospital, volume 8 (March) 1951, a Symposium on Congenital Anomalies of the Lower Bowel including Meckel's Diverticulum, has the following contributors:

Dr. H. D. Murdock. Meckel's Diverticulum, pp. 276-280.

Dr. Herschel J. Rubin. Differential Diagnosis of Intestinal Obstruction in Infants and Children, especially with reference to the neo-natal period, pp. 280-282.

Dr. Sol Wilner. Three case presentations of congenital anomalies of the lower bowel with x-ray diagnosis, pp. 282-285.

Dr. Victor K. Allen. Anomalies of Anus and Rectum, pp. 285-288.

Bone and Joint Diseases, Pathology Correlated With Roentgenological and Clinical Features, by J. Vernon Luck, M.S. (Ortho.), M.D., F.A.C.S., F.I.C.S., Assistant Clinical Professor of Orthopedic Surgery, University of Southern California, published by Charles C. Thomas, Springfield, Ill., 1950.

This book began as a set of mimeographed lectures prepared at the request of graduate students, interns, and resident physicians in Dr. Arthur Steindler's Department of Orthopedic Surgery at the State University of Iowa. It begins with a chapter on the normal skeletal system and in each succeeding chapter discusses a separate phase of bone and joint disease. The subject is first presented from a clinical standpoint and is followed by a discussion of anatomic pathology, pathogenesis, and a roentgenologic and clinical correlation. There are numerous illustrations in black and white and in color and ample references at the end of each chapter. It can be recommended to all physicians and surgeons who have occasion to treat bone and joint diseases.

The BULLETINRALPH F. MARTIN, M.D.
*Editorial Supervisor*DOUGLAS T. FERRARO, M.D.
GIFFORD H. HENRY, M.D.*Associate Editors*JACK SPEARS, *Managing Editor*

Published monthly on the 3rd day of each month at the executive offices of the Tulsa County Medical Society, 1202 Medical Arts Building, Tulsa, Oklahoma.

Vol. 17 JULY, 1951 No. 7

A POSITIVE APPROACH

In the face of well established facts it is difficult to account for the persistent belief of the public and press that the medical profession of America deliberately limits enrollment at American medical schools as a means of stifling competition. It is heard frequently in casual conversation and social gatherings, in magazines and newspapers (most recently in a Tulsa daily newspaper's editorial columns), and in loud repetitive blasts from the proponents of Socialized Medicine who see in the charges a potent ammunition. Investigation invariably discloses that an old story is being repeated by people who do not have the correct facts, and who apparently are not interested in the truth of the matter, but who gain some measure of enjoyment in berating and condemning. Sometimes, the charges are a product of sour grapes—the disappointment of some individual who has not been accepted for enrollment at a medical school. So much has the story been told, however, that it has come to be regarded as gospel.

Of course, it is true that not everyone who wishes to study medicine can do so, which is as it should be, and even more—it is true that some young men and women who would make good doctors cannot be accepted at medical schools because of limitations of facilities and faculty. It is questionable that a doctor shortage exists in the United States today; rather, there is a maldistribution of doctors in the

tendency of doctors to congregate in the larger centers and to overcrowd the various specialities to the neglect of general practice. The armed forces are taking some needed doctors from the home front, but at the same time there is a constant increase in the number of individual patients which any one doctor can treat, thanks to new techniques of diagnosis and treatment.

The American Medical Association, painted by irresponsible sources as a black villain in the matter of medical school enrollments, is openly advocating an increase in the number of medical students to be graduated yearly. It has, as proof of its intentions, set up the American Medical Foundation to provide funds to increase medical educational facilities in the United States; a half-million dollars of the money of the AMA has been voluntarily contributed to this cause. Many hundreds of thousands have already come in from individual doctors and other medical organizations.

A study of the operational pattern of the AMA will disclose no method by which the organization dictates medical school enrollments. It has fought for adequate facilities and teaching staffs in all approved medical schools. Too frequently the true cause of the difficulty has been the failure of such schools to obtain adequate financing. In the face of constantly rising costs many schools have been forced to get along on fixed incomes; others have been constantly penalized by penurious and narrow-minded legislatures. There is a regular fight every two years right here in Oklahoma to induce the State Legislature to appropriate sufficient funds to operate the University of Oklahoma School of Medicine; the requests for appropriations necessary to educate an adequate number of doctors are constantly cut. Maintenance costs go up, income remains the same or increases only slightly, and yet the hue and cry is raised that a deliberate control over medical school enrollments is in effect.

As doctors it is essential that we take a positive approach to this problem, individually combating this insidious propaganda, these half-truths and rumors. With the facts on our side so clearly indicated, we have the perfect weapon of offense.

AL MUSICK DRUG CO.

Your Suburban Prescription Pharmacy

529 NORTH DENVER

PHONE 5-7288

*Serving Tulsa's
North-Side
Prescription Needs*

CITY-

WIDE

DELIVERY

over **35** *years*

of

PRESCRIPTION SERVICE

to Tulsa Doctors

Delivery

WITH US IS
A PLEASURE —
NOT A PROBLEM

just telephone

4-3103

**SCOTT ROBISON'S
PRESCRIPTION
STORE
1303 SOUTH MAIN**

HARVARD DRUG STORE

B. C. SHINN, Owner

PHONE 6-2186

*The
Suburban
Prescription
Store*

FREE
PRESCRIPTION
DELIVERY
3244 E. 11th St.
Tulsa

W. M. JONES, M.D. 1875 - 1951

Dr. William Monroe Jones, 76, veteran Tulsa physician, died Monday, May 21, 1951, at his home. Death was attributed to heart disease.

Born in Washington, Iowa, Dr. Jones received his medical degree in 1905 from Creighton University School of Medicine at Omaha, Nebraska. Subsequently he did postgraduate study at the University of Vienna in Austria and in hospitals of London, England. He was formerly associated with the Wills Eye Hospital of Philadelphia and practiced at Chicago and Beatrice, Nebraska, before coming to Oklahoma in 1922. A specialist in ophthalmology and otolaryngology, he was associated with the Tulsa Clinic for the last several years.

Dr. Jones was a charter member of the Pilgrim Masonic Lodge of Tulsa and of the Cosmopolitan Club of Tulsa, of which he was a former President. He was a member of the Tulsa County Medical Society and at the time of his death had been nominated for Life Membership.

DR. SUGG ELECTED

(Continued From Page 7)

of the Grievances Committee and heard reports of widespread physician cooperation in the public relations project. Dr. John E. McDonald's Public Policy Committee also rendered a strong report reflecting a wide scope of activity.

The Councilor Report submitted to the House of Delegates commended Dr. Robert E. Funk, General Chairman, and Dr. John G. Matt, Chairman of the Scientific Works Committee, for their work as officials of the 1951 Annual Meeting. The efforts of the Executive Offices of the Tulsa County Medical Society were also commended in this respect.

Life Membership in the Oklahoma State Medical Association was conferred upon the following Tulsa doctors by the House of Delegates: Dr. P. N. Charbonnet, Dr. Thomas W. Stallings, Dr. Russell C. Pigford, Dr. H. Lee Farris, and Dr. J. W. Childs.

The 1952 annual meeting of the Association will be at Oklahoma City.



"Premarin"—a naturally occurring conjugated estrogen which has long been a choice of physicians treating the climacteric—is earning further clinical acclaim in the treatment of functional uterine bleeding.

The aim of estrogenic therapy in functional uterine bleeding is to bring about cessation of bleeding, and to produce subsequent regulation of the cycle. Once hemostasis is achieved, the maximum daily dosage of "Premarin" must be continued to prevent recurrence of bleeding. This schedule forms part of cyclic estrogen-progesterone treatment for attempted salvage of ovarian function.

While sodium estrone sulfate is the principal estrogen in "Premarin," other equine estrogens...estradiol, equilin, equilenin, hippulin...are probably also present in varying amounts as water-soluble conjugates.



An "estrogen of choice
for hemostasis
is 'Premarin'
in tablets of 1.25 mg....
The usual dose for
hemostasis is 2 tablets
three times a day.
If bleeding has not
decreased definitely by
the third day of
treatment the dosage
level may be increased
by 50 per cent."*

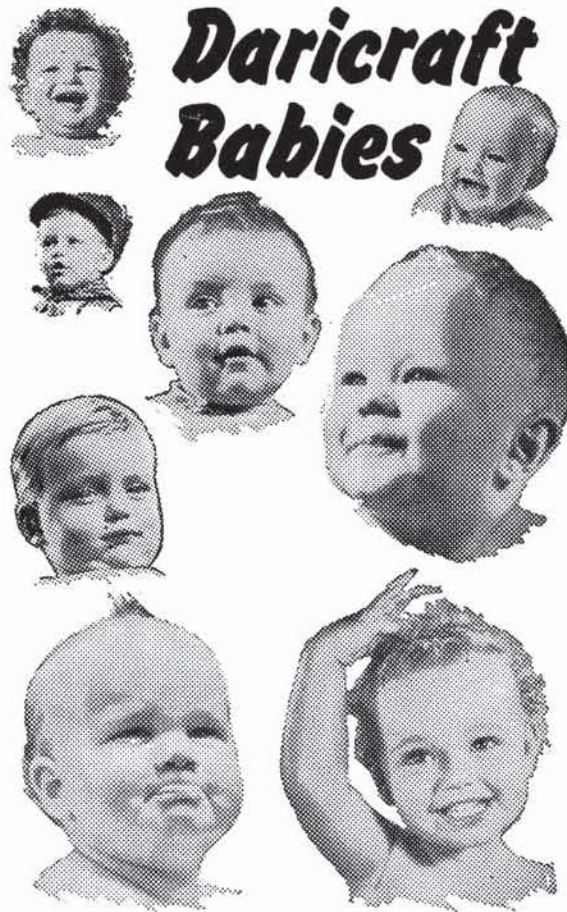
*Fry, C. O.: J. Am. M. Women's A. 4:51
(Feb.) 1949

"PREMARIN"®

*Estrogenic Substances (water-soluble)
also known as Conjugated Estrogens (equine)*

Four potencies of "Premarin" permit flexibility of dosage: 2.5 mg., 1.25 mg., 0.625 mg., and 0.3 mg. tablets; also in liquid form, 0.625 mg. in each 4 cc. (1 teaspoonful).

Ayerst, McKenna & Harrison Limited
22 East 40th Street, New York 16, N. Y.



Daricraft Babies

**More and more
doctors are prescribing
Daricraft Homogenized
Evaporated Milk
for babies . . . and for
convalescent diets**

**Always uniform in quality, safe, steri-
lized, high in food value and minerals.
Contains 400 U. S. P. units Vitamin D
per pint of Daricraft. Easily digested.**



PRODUCERS CREAMERY CO., SPRINGFIELD, MO.

AN APPEAL FOR HELP

After more than two years of operation the Tulsa County Red Cross Blood Center is functioning efficiently and successfully, annually providing blood to thousands of medical and surgical patients in Tulsa hospitals. The doctors of the Tulsa County Medical Society have come more and more to realize its value and appreciate the part which it plays in Tulsa Medicine. As evidence of this attitude there has been a constant increase in the replacement of blood, a factor stemming in many cases directly from the doctor's cooperative suggestions to the patient and his family. At this time there is one particular need which can be met through the cooperation of the doctor on the case — the replacement of blood given to out-of-town patients. While a substantial amount of such blood is replaced, too many patients are returning to their homes without arranging for the replacement of the valuable blood. This is frequently an oversight, a matter of convenience, or a lack of understanding as to the manner in which the Blood Center operates.

A real service can be done by the members of the Tulsa County Medical Society if they will make a special effort to replace blood given to out-of-town patients in Tulsa hospitals. Blood which is not replaced for such patients must come from generous Tulsa donors. An undue burden is placed upon the local community, and it is not inconceivable that continued abuses of this character may result in unnecessary blood shortages.

An appeal is made to you, doctor, for your help in replacing blood given to out-of-town patients. A word from you to the patient or his family will frequently produce the needed results. Won't you give your further help to the Tulsa County Red Cross Blood Center — *your* blood center — for this purpose?

DR. DERRIC C. PARMENTER has taken new professional quarters at 1204 South Cheyenne, Tulsa.

It's a girl for DR. and MRS. E. MALCOLM STOKES, born May 27th. Congratulations!

DR. R. M. WADSWORTH is taking postgraduate medical study in New York.

experience counts

and our experience of more than a quarter of a century in the optical business is reflected in our reliable service to the doctor and his patient.

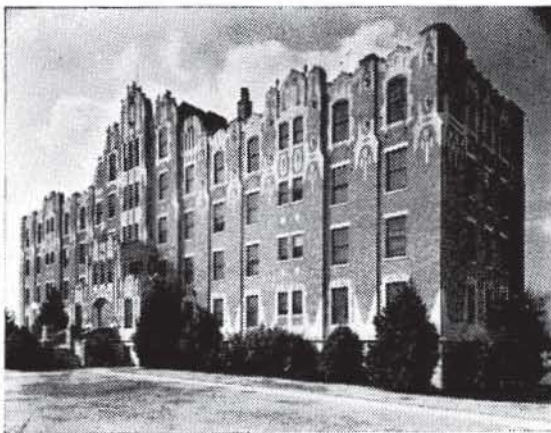
Visit our new offices and laboratory in the Court Arcade Building, 107 West 6th Street.

exactly opposite the Medical Arts Bldg.

COURTRIGHT

MANUFACTURING OPTICIAN

Telephone 4-1613



*One of Oklahoma's
finer hospitals*

1653 East Twelfth St.

Telephone 3-2131

TULSA, OKLAHOMA

**HILLCREST
MEMORIAL HOSPITAL**



The Emblem Of Approval

Owned and operated by the Tulsa County Medical Society, the Medical Credit Bureau offers an efficient reliable collection service at cost. More than 100 Tulsa doctors and dentists attest to its discreet collection abilities.

MEDICAL CREDIT BUREAU

Official Collection Agency of The Tulsa County Medical Society

1202 Medical Arts Bldg.

Telephone 3-6331

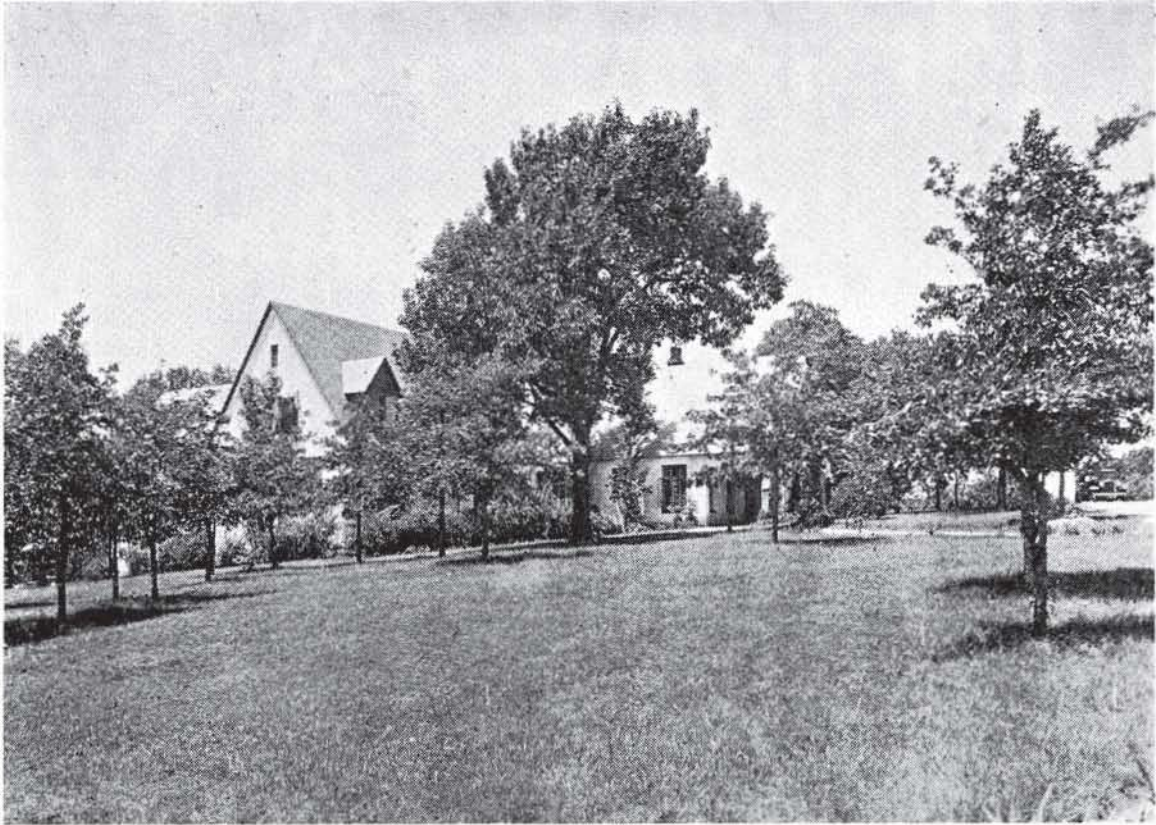
*Two fine prescription
pharmacies to serve you*

NO. ONE
603 S. BOULDER
TELEPHONE
2-3119

NO. TWO
44 N. HARVARD
TELEPHONE
6-1111

T. ROY BARNES
D R U G R Y

Your Guarantee of Reliable Prescription Service



For Convalescent Children

This hospital provides convalescent care to children ages 2-15. Graduate nurses in attendance 24 hours, modern physical therapy department and registered physical therapist, registered occupational therapist, supervised dietetics. Public school instruction under Tulsa Board of Education. Consulting Medical Staff. Contact Mrs. Lee Mulhall, Director, telephone 7-3311. Your inspection invited. Approved by Crippled Children's Commission, National Foundation For Infantile Paralysis, private insurance companies.

JUNIOR LEAGUE CONVALESCENT HOSPITAL FOR CHILDREN

4900 South Lewis Road

Telephone 7-3311



DICK KELLO

Offers
Prompt Motor Delivery
Of Your Prescriptions

Telephone 6-2156

BALL DRUG STORE

College at Admiral

ST. JOHN'S HOSPITAL

*A Leading
Institution*

*In
Oklahoma
Medicine*

1923 SOUTH UTICA
TULSA, OKLAHOMA

TELEPHONE
7-3361



For Nursing In The Home, Call Community Nursing
Service At The Public Health Association
807 South Peoria Telephone 5-3238

SPECIAL PURPOSE FOODS

LOW-SODIUM FOODS

LOW-CALORIE FOODS

DIABETIC FOODS

Phone 3-1106

Akin's

718 S. Boulder

Professional Directory

VICTOR K. ALLEN, M. D., F.A.C.S.
Diplomate American Board of Proctology
Diseases of the Rectum
1001 Medical Arts Bldg. Tulsa

TERRELL COVINGTON, JR., M.D.
Internal Medicine
Consultation Gastroscopy
223 Court Arcade Bldg. Ph. 3-2724

S. Y. ANDELMAN, M.D.
Diagnosis & Treatment of
Arthritis & Rheumatic Diseases
1611 South Boston Ph. 2-3885

PAUL E. CRAIG, M.D.
General Surgery
411 Daniels Bldg. Ph. 4-9674

ROBERT L. ANDERSON, M.D.
Thoracic Surgery, Bronchoscopy,
and Esophagoscopy
807 Medical Arts Bldg. Tulsa

SAMUEL E. FRANKLIN, M. D.
General Surgery
1619 E. 15th Street Ph. 3-2109

B. H. BLOCKSOM, M. D., F.A.C.S.
Diplomate, Boards of Surgery, Urology
Practice Limited to Urology
901 Medical Arts Bldg. Ph. 54-1888

ROBERT E. FUNK, M.D.
Practice Limited to Internal Medicine
212 Medical Arts Bldg. Tulsa

MANUEL BROWN, M. D.
Allergic Diseases
1619 E. 15th Street Ph. 54-5552

N. C. GADDIS, M.D.
Diagnosis & Internal Medicine
Special Attention to Lung Diseases
1530 South Peoria St. Tulsa

FOR LISTINGS IN THIS
PROFESSIONAL DIRECTORY
Telephone 4-8161

C. E. GILLILAND, M.D.
Practice Limited to Internal Medicine
Gastroenterology
Suite 210 Court Arcade Bldg.
Tulsa, Oklahoma

Professional Directory

<p style="text-align: center;">JOHN F. GRAY, JR., M.D. Neuropsychiatry 1109 Medical Arts Bldg. Ph. 3-5378</p>	<p style="text-align: center;">A. T. KORNBLEE, M.D. Practice Limited To Skin Diseases Diplomate, American Board of Dermatology & Syphilology 916 Medical Arts Bldg. Tulsa</p>
<p style="text-align: center;">HARRY GREEN, M.D. Diseases of the Skin X-Ray & Radium Therapy 311 Medical Arts Bldg. Ph. 4-7585</p>	<p style="text-align: center;">WALTER S. LARRABEE, M.D. DELMAS B. JONES, M.D. X-Ray Diagnosis & Therapy Radium Therapy 411 Medical Arts Bldg. Ph. 4-3111</p>
<p style="text-align: center;">MARSHALL O. HART, M.D. General Practice 1228 South Boulder Ph. 2-5904</p>	<p style="text-align: center;">E. N. LUBIN, M.D. Diplomate, American Board of Urology Genito-Urinary Diseases 1106 Medical Arts Bldg. Office Ph. 3-6008 Res. Ph. 7-4388</p>
<p style="text-align: center;">JAMES W. KELLEY, M.D. Plastic and Reconstructive Surgery 206 Philtower Bldg. Tulsa</p>	<p style="text-align: center;">JAMES D. MARKLAND, M.D. Allergy 411 Medical Arts Bldg. Ph. 4-3111</p>

SPRINGER CLINIC

Sixth and Cincinnati

Tulsa

Telephone 5-6621

Medicine

D. O. Smith, M.D.
E. G. Hyatt, M.D.
H. A. Ruprecht, M.D.
Albert W. Wallace, M.D.
Vincel Sundgren, M.D.
Dean C. Walker, M.D.

Neurology and Psychiatry

Tom R. Turner, M.D.
Joe E. Tyler, M.D.

Neurosurgery

Averill Stowell, M.D.
Robert A. Hayne, M.D.

Pediatrics

G. R. Russell, M.D.

General Surgery

Carl J. Hotz, M.D.
William Pratt, M.D.

Urology

K. F. Swanson, M.D.

Ear, Nose and Throat

Donald L. Mishler, M.D.

Orthopedic Surgery

Charles E. Brighton, M.D.

Ophthalmology

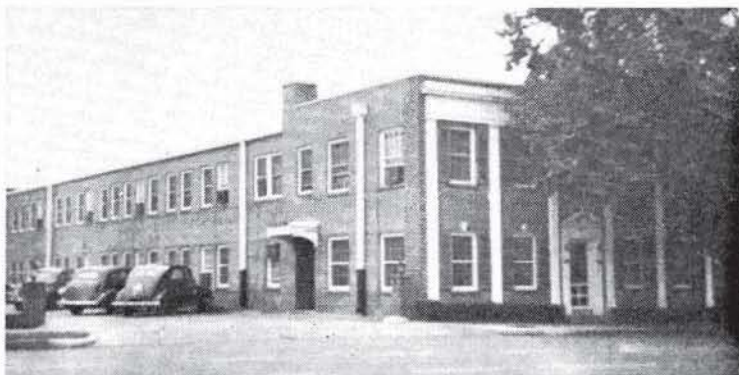
Otis S. Lee, M.D.

Anesthesia

M. R. Steel, M.D.

Professional Directory

<p style="text-align: center;">RALPH A. MCGILL, M.D., F.A.C.S. Surgery-Radium</p> <p>1010 Medical Arts Bldg. Ph. 4-4215</p>	<p style="text-align: center;">L. C. NORTHRUP, M.D., F.I.C.S. Gynecology & Obstetrics</p> <p>1307 S. Main Ph. 3-0151</p>
<p style="text-align: center;">EDWARD L. MOORE, M.D., F.A.C.S. Surgery Diplomate, American Board of Surgery 215 Braniff Bldg. Ph. 3-4789 Res. Ph. 7-1623</p>	<p style="text-align: center;">HERBERT S. ORR, M.D. Surgery and Obstetrics</p> <p>1645 East 15th Street Ph. 4-2658 Hillcrest Exchange 3-6772</p>
<p style="text-align: center;">IRON H. NELSON, M.D. Clinical and Surgical Pathology</p> <p>1107 Medical Arts Bldg. Tulsa</p>	<p style="text-align: center;">THE ORTHOPEDIC CLINIC 619 South Main Street Tulsa Practice Limited To Bone & Joint Surgery</p>
<p style="text-align: center;">MARQUE O. NELSON, M. D. Practice Limited to Dermatology Radium and X-Ray Therapy 510 Medical Arts Bldg. Tulsa</p>	<p style="text-align: center;">JOHN E. McDONALD, M.D. FRANK A. STUART, M.D. JOHN C. DAGUE, M.D.</p>



TULSA CLINIC

915 South Cincinnati
TULSA, OKLAHOMA

COMPLETE CLINIC FACILITIES

ANDRE B. CARNEY, M. D.

R. G. RAY, M. D.
EARL M. LUSK, M. D.
H. W. FORD, M. D.
W. M. JONES, M. D.

O. L. HILL, M. D.
JAMES C. PETERS, M. D.
CRAIG S. JONES, M. D.
CHARLES H. GLASS, D. D. S.

Telephone 4-0177

MISS BETTYE ADAMS, Director

A. D. MASON, Business Manager

Professional Directory

<p>R. C. PIGFORD, M.D., F.A.C.P. H. O. LOYD, M.D. American Board of Internal Medicine Cardiovascular Diseases 203 Court Arcade Bldg. Ph. 3-8860</p>	<p>WADE SISLER, M.D. Orthopedic Surgery 8th & Elgin Ph. 5-3123</p>
<p>SIMON POLLACK, M.D., D.A.B.R. Diagnostic and Therapeutic Radiology 316 Braniff Bldg. Ph. 2-7517</p>	<p>CHARLES G. STUARD, M.D. Ophthalmology 221 Court Arcade Bldg. Ph. 4-3435</p>
<p>J. L. RICHARDSON, M.D. Orthopedic & Traumatic Surgery 19 West 10th St. Tulsa</p>	<p>LEON H. STUART, M.D., F.A.C.R. X-Ray Diagnosis 1107 Medical Arts Bldg. Ph. 54-5348</p>
<p>HERSCHEL J. RUBIN, M.D. LEONARD L. KISHNER, M.D. Diseases of Infants & Children 1619 East 15th St. Tulsa</p>	<p>JAMES B. THOMPSON, M.D., F.A.C.S. General Surgeon Diplomate, American Board of Surgery 316 Medical Arts Building Ph. 3-3318</p>
<p>PHILIP M. SCHRECK, M.D. Internal Medicine 201-202 Medical Arts Bldg. Tulsa</p>	<p>DRS. TRAINOR & FIRST Cardiology & Electrocardiology W. J. TRAINOR, M.D. SAFETY R. FIRST, M.D. 1011 Medical Arts Bldg. Ph. 5-7545</p>
<p>MAURICE J. SEARLE, M.D. Pediatrics Diplomate, American Board of Pediatrics 512 Medical Arts Bldg. Tulsa</p>	<p>WILLIAM RAY TURNBOW, M.D. Diagnostic & Therapeutic Blocks 2112 W. 41st St. Ph. 5-0653</p>
<p>J. D. SHIPP, M.D. Surgery and Diseases of the Colon and Rectum 708 Medical Arts Bldg. Tulsa</p>	<p>ARNOLD H. UNGERMAN, M.D. MILFORD S. UNGERMAN, M.D. Diagnosis & Treatment of Nervous and Mental Diseases 404 Medical Arts Bldg. Ph. 2-3151</p>
<p>W. A. SHOWMAN, M.D. Dermatology 408 Medical Arts Bldg. Ph. 3-7789</p>	<p>R. M. WADSWORTH, M.D. Pediatrics 1445 S. Quaker Ph. 3-4300</p>
<p>F. D. SINCLAIR, M.D., F.A.C.S. Certified American Board of Obstetrics & Gynecology 307 Medical Arts Bldg. Ph. 5-5337</p>	<p>J. E. WALLACE, M.D. Gynecology 1328 S. Peoria Ph. 3-2383</p>



For

**RADIANT HEALTH
BUOYANT ENERGY
SOUND BONES
BEAUTIFUL TEETH**

We Recommend

**Homogenized
'VITAMIN D' MILK**

Fortified With 400 U.S.P. Units
Vitamin D Per Quart, By Vitex Process

Beatrice Foods Co.

215 North Denver

Telephone 4-2471

*"... in no other way can prevailing food habits be so certainly
and economically improved as by a more liberal use of good milk."*

*Dr. Henry C. Sherman
Columbia University*

DAIRY COUNCIL OF TULSA

ESTHER M. MUSIL, *Nutritionist*

312 Wright Building

Telephone 4-8280

Sec. 34.66 P. L. & R.

U. S. POSTAGE

PAID

TULSA 3, OKLA.

PERMIT No. 13

(Return Postage Guaranteed)

Be Certain with Curtain

CURTAINS PRESCRIPTION LABORATORY

SIXTH AND BOULDER

PHONE 4-7116

Across the Street North From Medical Arts Bldg.

MERKEL X-RAY CO.

Distributor For

Westinghouse X-Ray Equipment
Physical Therapy Equipment



Complete Stock
X-Ray and Physical Therapy
Supplies



TULSA

1114 S. Boulder

Tel. 2-4897

OKLAHOMA CITY

1130 N. Hudson

Tel. 2-3522

MID-CONTINENT SURGICAL SUPPLY CO.

*The Complete
Surgical Supply Store*

Hospital and Physicians
Equipment and Supplies
X-Ray Equipment

We carry a complete stock of instruments, rubber goods, surgical dressings, sutures, laboratory supplies, and sick-room needs.

PHONE 2-8169

TULSA

610 SOUTH BOSTON

Commercial Printing Company **PRINTERS**

We Print the Bulletin

OFFICE AND PLANT AT 417 EAST 3RD STREET

R. W. (Bob) HUDSON

Publications, Programs
Advertising Literature,
Office and Factory Forms
Fine Personal Stationery

TELEPHONE 2-2450