

MAR 1 1951

LIBRARY
TULSA COUNTY MEDICAL SOCIETY



THE BULLETIN

of the Tulsa County Medical Society

Give To YMCA



IN THIS ISSUE



1951 State Convention
Arrangements Near Completion



The Medical Library



Chicago Gynecologist To
Speak Here March 26th



President's Page

58TH ANNUAL CONVENTION

*Oklahoma State
Medical Association*

TULSA
MAY 21-23

March, 1951

Vol. 17

No. 3

POLY-VI-SOL
TRI-VI-SOL
CE-VI-SOL



concentrated • economical • easy-to-use

3 water-soluble liquid vitamin preparations

As vitamin needs vary throughout childhood, the versatility of the three Vi-Sols makes them ideal supplements. The Vi-Sols are pleasant tasting, and the calibrated droppers make dosage measurement easy.

	VITAMIN A	VITAMIN D	ASCORBIC ACID	THIAMINE	RIBOFLAVIN	NIACINAMIDE
POLY-VI-SOL each 0.6 cc. supplies:	5000 units	1000 units	50 mg.	1 mg.	0.8 mg.	5 mg.
TRI-VI-SOL each 0.6 cc. supplies:	5000 units	1000 units	50 mg.			
CE-VI-SOL each 0.5 cc. supplies:			50 mg.			

Available in 15 and 50 cc. bottles



**MIX WITH
FORMULA**



**FRUIT JUICE
CEREAL**



**OR DROP
INTO MOUTH**

MEAD'S
MEAD JOHNSON & CO.
 EVANSVILLE 21, IND., U. S. A.

GETMAN'S

ROY R. GETMAN, Founder



*Sixth and Main Sts.
Phone - 3 6171*

"INGREDIENTS"

No medicine of compounded prescription can be any better than "the things of which it is made". We have "the things" you need — when you need them! And you may be certain that your orders are followed "to the letter".

"A STRONG America is
a SAFE America"

FREE DELIVERY NIGHT AND DAY.

WE GIVE S & H GREEN STAMPS

Sponsors of the "Tell Me, Doctor" Radio Broadcasts at 5:15 P.M. each Monday through Friday, KTUL, prepared by The Oklahoma State Medical Association.

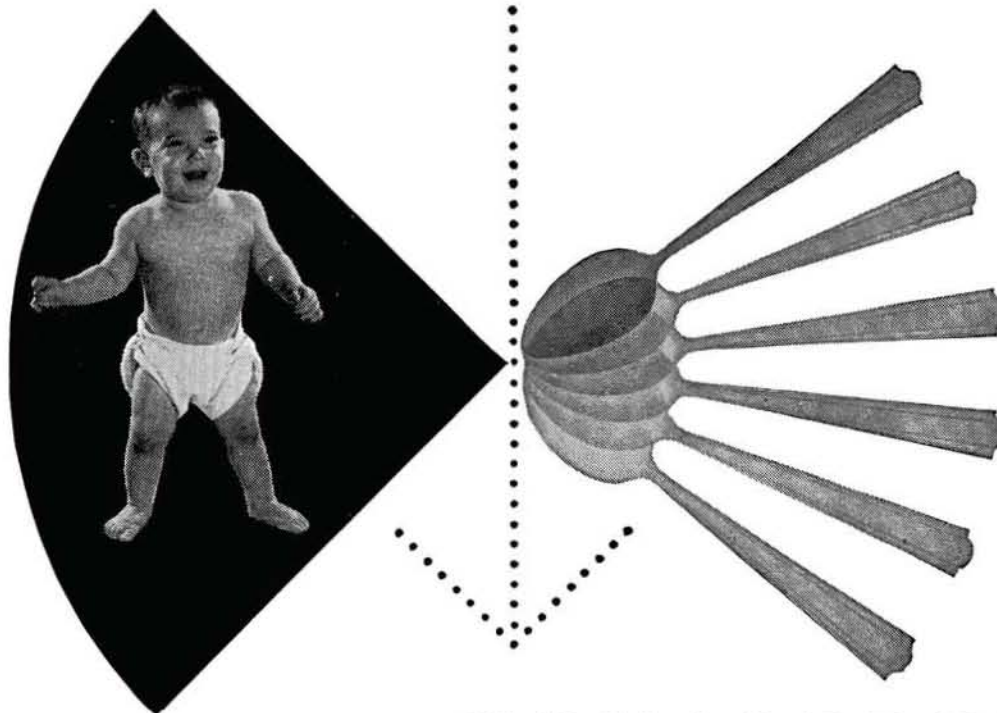
CONTENTS

Convention Plans Completed	7
Scientific Exhibits Needed	8
The Medical Library	9
March Program Notes	11
Scientific Papers Sought	11
President's Page	12
Regional Blood Center Sought	15
New Members	16
Personals	16
Facts About The AMA Dues	18
AMA Convention Dates	18
Editorial	20

ADVERTISERS

Akin's Natural Foods	23
Ayerst, McKenna & Harrison	17
Ball Drug Company	18
Beatrice Foods, Inc.	27
Coca Cola	4
Commercial Printing Co.	28
Courtright-Optician	10
Curtain's Prescription Laboratory	28
Daricraft	16
Dairy Council of Tulsa	27
Eli Lilly & Company	6
Getman Drug Store	5
Harvard Drug Store	15
Hillcrest Hospital	14
Junior League Home	21
Mead Johnson & Company	2
Medical Arts Prescription Shop	19
Medical Service Society	22
Merkel X-Ray Co.	28
Mid-Continent Surgical Supply Co.	28
Al Musick Drug	13
Professional Directory	23
Professional Drug Shop	10
Public Health Association	22
Raley-Shaddock Pharmacy	4
Schering Corporation	3
Scott Robison's Drug Store	15
Springer Clinic	24
St. John's Hospital	18
T. Roy Barnes Drugry	14
Tulsa Clinic	25

how to get the most out of vitamins



The natural oil globules in **H O M I C E B R I N**

(Homogenized Vitamins A, B₁, B₂, C, and D, Lilly), as in milk, are so finely subdivided that they are easily and completely assimilated. Such minute particles readily surrender their vitamin content to the delicate digestive tract of even the smallest infant. The essential water-soluble factors further round out this formula to give young patients full protection from vitamin deficiencies.

The new pint-size economy package reduces the cost of the daily dose in early infancy to less than two cents.

ELI LILLY AND COMPANY • INDIANAPOLIS 6, INDIANA, U.S.A.

Complete literature on Lilly vitamin products for prescription use is available from your Lilly medical service representative or will be forwarded upon request.

THE BULLETIN

OF THE

TULSA COUNTY MEDICAL SOCIETY

W. A. Showman, M.D., *President*Marshall O. Hart, M.D., *President-Elect*John G. Matt, M.D., *Vice-President*Harold J. Black, M.D., *Secretary-Treasurer*Jack Spears, *Executive Secretary*

Vol. 17

TULSA, OKLAHOMA, MARCH, 1951

No. 3

CONVENTION PLANS NEAR COMPLETION

Record Attendance Of 1,000 Expected At Annual Meeting Of Oklahoma State Medical Association In Tulsa, May 21-23. Dinner Dance To Be At Tulsa Club.

Arrangements for the 58th Annual Meeting of the Oklahoma State Medical Association in Tulsa, May 21-23, 1951, were virtually complete as this issue of The Bulletin went to press. Highlighted by an outstanding scientific program featuring eight nationally known medical personalities as guest lecturers, the convention is expected to draw in excess of 1,000 Oklahoma doctors for a record attendance.

The completion of the details of the scientific program was announced last month by Dr. John G. Matt, Chairman of the Scientific Works Committee. A total of forty scientific papers will be presented in addition to a symposium on the latest methods of treatment in general practice. The latter will be sponsored by the University of Oklahoma School of Medicine and will include an additional five papers. Sixteen papers will be presented by visiting guest speakers, the balance by members of the Oklahoma State Medical Association. An hour-long symposium on ACTH and Cortisone, featuring a roundtable discussion of the subject by visiting guest speakers, is also included on the scientific program. A printed program of all convention activities should reach all Oklahoma doctors about April 1st, Dr. Matt said.

The President's Annual Dinner Dance will again be held on the second night of the meeting, Tuesday, May 22nd, at the Tulsa Club. Members of the State Association and their wives will be guests of the Tulsa County Medical Society at a reception from 6:00 P.M. to 7:00 P.M.,

with dinner to be served at 7:00 P.M. followed by the inaugural ceremonies and a brief program featuring a speaker yet to be selected. Dancing will follow at the Tulsa Club from 9:00 P.M. to 1:00 A.M.

The Oklahoma State Medical Association Annual Golf Tournament and Dinner will conclude convention activities on Wednesday, May 23rd, at the Indian Hills Country Club. Golfing will begin at 12:00 Noon with a steak dinner to be served at the clubhouse at 7:00 P.M. Dr. Paul N. Atkins, Jr., Chairman of the Golf Committee, said many attractive prizes had already been promised for the event.

A special presentation of the medical military situation will be made on Wednesday, May 23rd, by Brigadier General Paul I. Robinson, M.C., Chief of Medical Personnel, Office of the Surgeon General, Department of the Army, Washington, D. C. Dr. Robinson will present latest information about the status of doctors in regard to military needs and will answer pertinent questions from the floor.

Many specialty groups are planning meetings before and during the meeting proper. Already scheduled are the Oklahoma Society of Anesthesiologists and the Oklahoma Rheumatism Society. All such groups have been requested to contact Dr. John G. Matt so that notice of their meeting may be included in the printed program and other publicity material. The Alumni Association of the University of Oklahoma School of Medicine is planning a reception and short

business meeting for Monday evening, May 21st, at The Mayo. Doctors office assistants will convene for a two-day meeting of the Oklahoma Medical Assistants Society, May 19-20.

An attractive program of social and business events will mark the annual meeting of the Womans Auxiliary to the Oklahoma State Medical Association, May 21-23, at Hotel Tulsa. Complete details of the Auxiliary program will be announced later. Mrs. Averill Stowell and Mrs. Rayburne W. Goen are convention co-chairmen.

The House of Delegates will meet on Sunday, May 20, at 2:00 P.M., at The Mayo and will continue in session throughout the day and evening. Council is expected to convene for a short session at 10:00 A.M., on the same day.

All commercial exhibit space has been sold and thirty-five firms will be represented at the commercial exhibits hall on the 16th floor of The Mayo. All meetings of the convention, with the exception of the dinner dance and the Womans Auxiliary, will be at The Mayo. Most other related events and meetings of specialty groups are expected to be quartered at other hotels.

In Tulsa last month, Dr. Robert E. Funk, General Chairman, urged doctors to begin making hotel reservations for the meeting. "While we do have an adequate number of hotel rooms to house the convention, we want to urge all members of the Association to make their

reservations early," Dr. Funk said. "Doctors may use the official reservation card to be found in the March and April issues of The Journal of the Oklahoma State Medical Association, or may write to the Hotels Committee of the Tulsa County Medical Society, 1202 Medical Arts Building, Tulsa. Please do not write directly to hotels."

The roundtable luncheons, heretofore a feature of the annual meeting, will not be held this year due to declining interest. However, a special luncheon will be held on Monday, May 21st, under the auspices of the Public Policy Committee of the Oklahoma State Medical Association. Doctors and their wives will hear a discussion of medical public relations by two outstanding speakers yet to be selected. Dr. John E. McDonald, Chairman of the Public Policy Committee, said attendance would be limited to 225 persons.

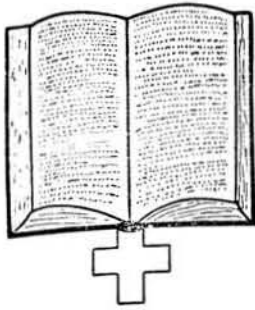
On Tuesday and Wednesday, May 22-23, visiting doctors will be guests of the Blue Cross-Blue Shield Plans of Oklahoma at a complimentary buffet luncheon to be served from 12:00 Noon to 2:00 P.M. each day at the offices of the Plans, 315 South Denver. Members of the Association will be given an opportunity to tour the offices of the Blue Cross-Blue Shield Plans and ask questions about the operation of the voluntary programs of hospital and surgical care.

Tulsa doctors who will appear on the scientific program include Dr. Robert L. Anderson, Dr. Emanuel N. Lubin, Dr. Robert M. Shepard, Jr., Dr. H. J. Rubin, Dr. A. Ray Wiley, Dr. Rayburne W. Goen, Dr. J. D. Shipp, Dr. Edward L. Moore, Dr. Lucien M. Pascucci, Dr. Terrell Covington, Jr., and Dr. Maurice P. Capehart.

All arrangements for the meeting are being handled by the Tulsa County Medical Society under the direction of Dr. Robert E. Funk, General Chairman. Members of the convention committee include Dr. John E. McDonald, social events; Dr. Felix R. Park, motion pictures; Dr. John G. Matt, program; Dr. I. H. Nelson, commercial exhibits; Dr. Edward L. Moore, publicity; and Dr. Paul N. Atkins, Jr., golf.

LAST CALL FOR EXHIBITS

The final date on which doctors may apply for scientific exhibit space at the 1951 annual meeting of the Oklahoma State Medical Association has been extended to March 15, 1951. For an application blank write Scientific Exhibits Committee, % Tulsa County Medical Society, 1202 Medical Arts Building, Tulsa, Oklahoma. The scientific exhibits will occupy the Emerald Room of The Mayo. No charge is made for the booth space or basic decorations, but exhibitors must pay all costs of building and installing exhibits.



THE MEDICAL LIBRARY

Library of the Tulsa County
Medical Society



Medical Library Committee:

Thomas J. Hardman, M.D., Chairman

Felix R. Park, M.D.

Robert E. Funk, M.D.

William R. Turnbow, M.D.

David V. Hudson, M.D.

Miss Irma A. Beehler, *Librarian*

Telephone 4-1461

RECENT ACQUISITIONS—:

- Ivy, C. A., Grossman, M. E., and Bachrach, W. H. **Peptic Ulcers**. Pp. 1,144, tables, figures, author index. Blakiston Company, Philadelphia, Pa., 1950.
- Lichtman, S. S. **Diseases of the Liver, Gallbladder, and Bile Ducts**. Second edition, revised, pp. 1,135, ill. 147. Lea & Febiger, Philadelphia, Pa., 1949.
- Pick, John F. **Surgery of Repair**. Two volumes, pp. 828, ill. 1,094, color plates 17. J. B. Lippincott Company, Philadelphia, Pa., 1950.
- Tassman, I. G. **Eye Manifestations of Internal Diseases (Medical Ophthalmology)**. Third edition, pp. 692, ill. 279, 25 in color. C. V. Mosby Company, St. Louis, Mo., 1951.
- Thomson, Sir St. Clair, and Negus, V. E. **Diseases of the Nose and Throat**. Fifth edition, pp. 1,104, 13 color, 20 radiographic, and 11 other plates, 369 fig. Appleton-Century-Crofts Company, New York, N. Y., no date.
- Wesson, M. B. **Urological Roentgenology**. Third edition, revised, pp. 282, ill. 284. Lea & Febiger, Philadelphia, Pa., 1950.

GIFTS OF THE MONTH—:

- Dr. W. Albert Cook. American College of Surgeons, 1950-52 Yearbook; Campbell, H. J. and Liberman, J. B., Physicians' Federal Income Tax Guide For The Preparation of 1950 Returns and 1951 Estimates. 1951 edition, pp. 128, Doniger and Raughley, Inc., Great Neck, N. Y., 1950.

RECENT PUBLICATIONS BY MEMBERS OF THE TULSA COUNTY MEDICAL SOCIETY—:

- Dr. Henry S. Browne. Management of Hydronephrosis Due To Upper Urinary Tract Obstruction. *Journal of the Oklahoma State Medical Association*, 44:51-52 (February), 1951.
- Dr. Charles H. Eads. Classification of Cystic Tumors of the Ovary. *Proceedings of the Staff Meeting of Hillcrest Memorial Hospital*, 7:249 (November-December), 1950.
- Dr. William C. Ewell. Symptoms and Diagnosis of Tumors of the Ovary. *Proceedings of the Staff Meeting of Hillcrest Memorial Hospital*, 7:250-253 (November-December), 1950.
- Dr. Herbert S. Orr. Treatment of Ovarian Tumors. *Proceedings of the Staff Meeting of Hillcrest Memorial Hospital*, 7:253-256 (November-December), 1950.
- Dr. Robert M. Shepard, Jr., and others. Complications of Pneumothorax and Pneumonolysis. *Diseases of the Chest*, 19:78-91 (January), 1951.

Eye Manifestations of Internal Diseases, by Dr. I. B. Tassman, Associate Professor of Ophthalmology, Graduate School of Medicine, University of Pennsylvania, had as its purpose the providing of a bridge between the eye manifestations and other medical aspects of internal disease. This, the third edition, sticks to this plan and the arrangement of material. The subject of glaucoma has been rewritten in order to conform to the present day understanding of this condition. New material has been added and the most recent forms of treatment have been included. The important features of eye manifestations of disease are emphasized and described in detail with special reference to the appearance, differential diagnosis, management, treatment, and prognosis of condition.

— you are invited —

TO VISIT OUR

NEW OFFICE AND LABORATORY

in the Court Arcade Building

at 107 West 6th Street

exactly opposite the Medical Arts Bldg.

COURTRIGHT

MANUFACTURING OPTICIAN

Telephone 4-1613

D. L. KINCAID
(Kinney)

RAYMOND EWERS

Professional

DRUG SHOP

An Ethical Prescription Pharmacy

2110 South Utica

Telephone 3-8169

City Wide Delivery Service

Two Miles Closer to Southeast Tulsa



CHICAGO GYNECOLOGIST TO SPEAK HERE MARCH 26TH

Dr. John W. Huffman, Associate Professor of Obstetrics & Gynecology, Northwestern University Medical School, Chicago, will be guest speaker for the Tulsa County Medical Society on Monday, March 26, 1951. His subject will be "Stress Incontinence."

Two weeks earlier, on Monday, March 12, 1951, the Society will hear Dr. H. O. Loyd, Tulsa internist and specialist in cardiovascular diseases, discuss the subject "Recent Observations On The Problem Of Coronary Diseases." Both meetings will be at 8:00 P.M. at The Mayo.

Known as the co-author with Dr. Arthur H. Curtis of the textbook, "Textbook of Gynecology," Dr. Huffman has long been prominent in national medical circles. A graduate of Northwestern University Medical School, Class of 1930, he interned at California Lutheran Hospital, Los Angeles, California. His special training in obstetrics and gynecology was obtained at Passavant Memorial Hospital of Chicago and at Boston Lying-In Hospital, Boston, Massachusetts. Now in private practice at Chicago, he is a diplomate of the American Board of Obstetrics and Gynecology, a fellow of the American College of Surgeons, and a member

of the Central Association of Obstetricians & Gynecologists, the Society For Experimental Biology, the Chicago Gynecological Society, and local, state, and national medical associations.

His paper will be preceded by a buffet dinner in The Terrace Room of the Mayo, serving from 6:30 P.M. to 7:45 P.M. Reservations should be made by 2:00 P.M. of the day of the meeting. The price will be \$4.00 per plate.

Dr. H. O. Loyd is a newcomer in Tulsa medical circles, having entered practice here last year in association with Dr. Russell C. Pigford. A graduate of the University of Kansas School of Medicine, Class of 1940, he interned at Polk County Hospital of Des Moines, Iowa. Later he was a resident in cardiovascular diseases at Cook County Hospital of Chicago, resident in medicine at De Paul Hospital, St. Louis, and fellow in medicine, Barnes Hospital, St. Louis. He was formerly in practice at Jefferson City, Missouri. Dr. Loyd is a diplomate of the American Board of Internal Medicine and member of several other medical groups.

A short business meeting will follow the scientific program on March 12th but no business will be transacted at the second meeting of the month.

SCIENTIFIC PAPERS SOUGHT

The Program Committee of the Tulsa County Medical Society last month issued a second invitation to members of the Society to submit papers for consideration for the monthly scientific programs of the group. Dr. S. C. Shepard, Chairman, said several papers were needed to complete the Fall schedule of lectures and urged any doctor interested in presenting a paper to send a brief synopsis of the subject content to the Tulsa County Medical Society, 1202 Medical Arts Building, Tulsa.

Elected to Life Membership in the Tulsa County Medical Society last month were DR. RUSSELL C. PIGFORD, DR. H. LEE FARRIS, DR. J. W. CHILDS, DR. SILAS S. MOHRMAN, DR. J. E. WALLACE, DR. L. C. PRESSON, and DR. THOMAS W. STALLINGS.

PRESIDENT'S PAGE

Two current building fund campaigns—the Tulsa Chamber of Commerce and the Tulsa YMCA, both of which merit your support, by the way—have led me to again reflect upon the housing problem of our own Tulsa County Medical Society. About three years ago your Board of Trustees and a special housing committee attempted to interest the membership in either acquiring some structure or in constructing an entirely new building as our permanent home. Quite a bit of time was wasted in endless investigations and discussions. Some suitable properties were considered most seriously and referred to the membership for decision; all were eventually dropped through a pronounced lack of interest by the general membership, through disagreement as to location, price, and other factors, and through the unwillingness of some members to participate financially in the project.

Our housing problem today is much as the same as three years ago except that it is several degrees more serious. True, it is by no means acute. Personally, I feel that we are making an error in not doing some real planning for this emergency which will one day be upon us. Our Medical Library is bursting at the seams; our Executive Offices and Medical Credit Bureau are unduly crowded and in need of storage space. A meeting hall must be rented as needed at a local hotel. I believe this Society would do well to draw up definite plans for meeting this housing problem at some future date—perhaps by the creation of a building fund, a method used by many county and state medical societies. The situation is not going to get better, and certainly it will get a lot worse. The sooner we face facts on the problem, the better results we can obtain, the sooner can our space situation be alleviated. Do you agree?

Sincerely,



President

al MUSICK DRUG

529 North Denver

Ph. 5-7288

Prescriptions

*Catering To The Doctor And
To His Patients*



City Wide Free Delivery

8:00 A. M. to 10:00 P. M.

Visit Our New
NUMBER TWO STORE

44 North Harvard

Telephone 6-1111

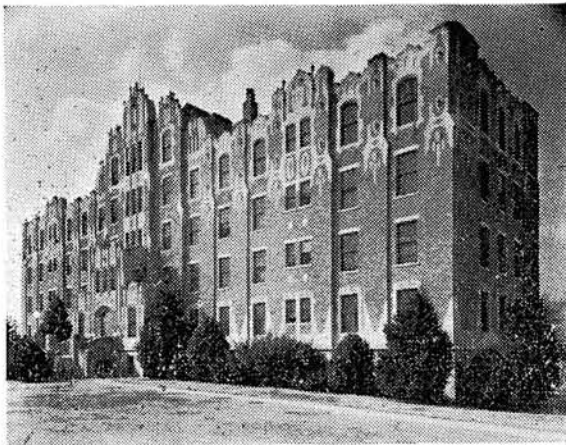
T. ROY BARNES
D R U G R Y

A Reliable Prescription Pharmacy

603 S. Boulder

Ph. 2-3119

Tulsa, Oklahoma



*One of Oklahoma's
finer hospitals*

1653 East Twelfth St.

Telephone 3-2131

TULSA, OKLAHOMA

HILLCREST
MEMORIAL HOSPITAL

TULSA BLOOD CENTER MAY CONVERT TO REGIONAL BASIS

A recommendation that the Tulsa County Red Cross Blood Center be converted into a regional Red Cross blood center to serve Northeastern Oklahoma was sent to the Tulsa County Chapter of the American Red Cross last month after unanimous approval by the membership of the Tulsa County Medical Society on February 12, 1951.

The proposal, if accepted by the National Chapter, would greatly expand the functions of the present center and set up a system of collecting and redistributing whole blood in an estimated fifteen counties in the Northeastern section of the State. A mobile unit equipped for drawing blood would visit cities and towns in the area in accordance with a prearranged and well publicized schedule. Such blood would then be redistributed to hospitals throughout the area in accordance with their needs. Surplus blood would be converted to plasma or sent to needy areas elsewhere or to emergency defense stockpiles.

Dr. Felix R. Park, Chairman of the Blood Center Committee of the Tulsa County Medical Society, said the project would in no way affect the availability of blood for Tulsa hospitals. "The situation insofar as the Tulsa hospitals are concerned would be improved as it would become possible to regularly replace blood given out-of-town patients in Tulsa hospitals," he said. "Other hospitals in the area would also be given the collection and distribution system which has worked so well in Tulsa."

Officials of the Red Cross Blood Center said the conversion to a regional basis would probably take six months.

LAST CALL FOR DUES

A few members of the Tulsa County Medical Society have not paid their 1951 annual combined dues of \$125.00, which includes annual dues to the Oklahoma State Medical Association and the American Medical Association. Members are requested to send their checks to the Society offices, 1202 Medical Arts Building, Tulsa, not later than March 30, 1951.

Delivery

WITH US IS
A PLEASURE —
NOT A PROBLEM

just telephone

4-3103

**SCOTT ROBISON'S
PRESCRIPTION
STORE**

1303 SOUTH MAIN

HARVARD DRUG STORE

B. C. SHINN, Owner

PHONE 6-2186

*The
Suburban
Prescription
Store*

FREE
PRESCRIPTION
DELIVERY

3244 E. 11th St.
Tulsa



Daricraft Babies

**More and more
doctors are prescribing
Daricraft Homogenized
Evaporated Milk
for babies . . . and for
convalescent diets**

Always uniform in quality, safe, sterilized, high in food value and minerals. Contains 400 U. S. P. units Vitamin D per pint of Daricraft. Easily digested.



PRODUCERS CREAMERY CO., SPRINGFIELD, MO.

NEW MEMBERS

Elected to membership in the Tulsa County Medical Society at the regular meeting of February 12, 1951, were the following:

Theodore Turnbull, M. D. Perry Clinic, 222 East 5th Street, Tulsa. Medical Degree, Northwestern University Medical School, 1945. Interned Cook County Hospital, Chicago, Illinois, one year. Formerly in practice at Chicago, Illinois, and Rochester, Minnesita. Specialty, Internal Medicine. Recommended by Dr. Richard E. McDowell and Dr. Hugh Perry.

Clifford W. Allen, Jr., M. D. 1129 South Owasso, Tulsa. Medical Degree, University of Oklahoma School of Medicine, 1944. Interned United States Naval Hospital, nine months. United States Naval Reserve, 1944-46, on active duty; resident in General Surgery, Methodist Hospital, Dallas, Texas, 1946-47; resident in neurological surgery, Chicago Memorial Hospital, 1947-48; fellow in neuropathology, University of Illinois School of Medicine, Chicago, 1948-49; resident in neurosurgery, University Hospital, Oklahoma City, 1949-51. Specialty, Neurology and Neurological Surgery. Recommended by Dr. H. D. Murdock and Dr. George M. Adams.

Changes of address: DR. HUGH L. BOYD has taken new professional quarters in the Braniff Building; DR. ARNOLD H. UNGERMAN and DR. MILFORD S. UNGERMAN are now officing at 404 Medical Arts Building; DR. JAMES W. WHITE has removed his offices to 1515 South Boston; DR. MAURICE P. CAPEHART is now at 706 Medical Arts Building; DR. J. E. WALLACE has removed his professional offices to 1328 South Peoria; DR. J. D. SHIPP is now at 708 Medical Arts Building; DR. FELIX R. PARK is now at 402 Medical Arts Building; and DR. DANIEL M. MacDONALD has taken attractive new quarters at 1531 East 15th Street.

Its a son for DR. and MRS. ROBERT A. HAYNE, born February 14th at St. John's Hospital. Congratulations!

The "estrogen preferred by us is 'Premarin,' a mixture of conjugated estrogens, the principal one of which is estrone sulfate."

Hamblen, E. C.: North Carolina M. J. 7:533 (Oct.) 1946.

Four potencies of "Premarin" permit flexibility of dosage: 2.5 mg., 1.25 mg., 0.625 mg. and 0.3 mg. tablets; also in liquid form, 0.625 mg. in each 4 cc. (1 teaspoonful).

"PREMARIN"®

In treating the menopausal syndrome with "Premarin," Perloff* reports that "Ninety-five and eight-tenths per cent of patients treated with 3.75 mg. or less daily obtained complete relief of symptoms"; also, "General tonic effects were noteworthy and the greatest percentage of patients who expressed clear-cut preferences for any drug designated 'Premarin.'"

Thus, the sense of "well-being" usually imparted represents a "plus" in "Premarin" therapy which not only gratifies the patient but is conducive to a highly satisfactory patient-doctor relationship.

*Perloff, W. H.: Am. J. Obst. & Gynec. 58: 684 (Oct.) 1949.



"Premarin" contains estrone sulfate plus the sulfates of equilin, equilenin, β -estradiol, and β -dihydroequilenin. Other α - and β -estrogenic "diols" are also present in varying amounts as water-soluble conjugates.

Estrogenic Substances (water-soluble) also known as Conjugated Estrogens (equine)

Ayerst, McKenna & Harrison Limited
22 East 40th Street, New York 16, N. Y.

5003 R



ST. JOHN'S HOSPITAL

*A Leading
Institution
In
Oklahoma
Medicine*

1923 SOUTH UTICA
TULSA, OKLAHOMA

TELEPHONE
7-3361



DICK KELLO

Offers

Prompt Motor Delivery
Of Your Prescriptions

Telephone 6-2156

BALL DRUG STORE

College at Admiral

FACTS ABOUT THE AMA DUES

In reply to many inquiries, the following information is published about the American Medical Association dues for 1951.

1. The dues for 1951 are \$25.00. This sum must be paid to the Tulsa County Medical Society and is included on the itemized statement sent to members on January 1st.

2. Payment of the AMA dues is required of all active members except those who have been in active practice less than two years. Members who are Honorary Members or Life Members are not required to pay.

3. AMA dues include a subscription to The Journal of the American Medical Association, except that members who are excused from payment of dues do not receive The Journal except by personal subscription at the regular rate of \$15.00 per year. Allow ninety days after payment of dues for subscription to begin.

4. Fellowship dues continue separate and are \$5.00 for 1951. Application for fellowship must be made directly to the offices of the American Medical Association, 535 North Dearborn, Chicago, Ill.

5. Only Fellows are permitted to substitute one of the special journals published by the AMA for The Journal. However, he will not also receive The Journal.

AMA DATES ANNOUNCED

The dates of the annual meeting of the American Medical Association have been announced for June 11-15, 1951, at Atlantic City, New Jersey. Hotel reservations should be made at once.

DR. ROBERT M. SHEPARD, JR. has been named a diplomate of the American Board of Surgery.

DR. A. RAY WILEY has been named a member of the Peruvian Academy of Surgery and extended an invitation to speak at their coming meeting in Arequipa, Peru, in March. He will be unable to attend, having recently returned from a meeting of the Inter-American Surgical Congress at Lima, where he addressed the convention.

Tulsa's Better Prescription Service

Built upon the experience of a quarter of a century of service to Tulsa Medicine, the Medical Arts Prescription Shop offers accurate and reliable service to you and your patients—a BETTER service which reflects our reputation for quality.

**City-Wide
DELIVERY
Service**

**Your
Headquarters
For**

- PRESCRIPTIONS
- BIOLOGICALS
- SURGICAL SUPPLIES
- SICKROOM NEEDS
- PHARMACEUTICALS
- ORTHOPEDIC APPLIANCES

Medical Arts Prescription Shop

SIXTH AND BOULDER

TELEPHONE 4-0121

The BULLETIN

RALPH F. MARTIN, M.D.

Editorial Supervisor

DOUGLAS T. FERRARO, M.D.

GIFFORD H. HENRY, M.D.

*Associate Editors*JACK SPEARS, *Managing Editor*

Published monthly on the 3rd day of each month at the executive offices of the Tulsa County Medical Society, 1202 Medical Arts Building, Tulsa, Oklahoma.

Vol. 17 MARCH, 1951 No. 3

A NEED FOR UNITY

There was considerable encouragement in the recent announcement that the Oklahoma State Nurses Association, District Number Two, had formally expressed its opposition to federal compulsory health insurance and other forms of socialized medicine. The registered nurses who comprise this segment of the State Association are to be congratulated for the clear thinking which brought about this action; it is tangible evidence that at least some nurses are cognizant of the subtle attempts which are being made to bring the nursing profession under federal domination. It is to be hoped that the firm stand made by the District Number Two group will be reflected in similar actions by other nursing associations over the nation. The unity of the medical and nursing professions in resisting the encroachments of federal control is essential; a weakness in either may well bring about the downfall of both groups as free practitioners, independent in their activities and unfettered by the bureaucratic controls of federal medicine.

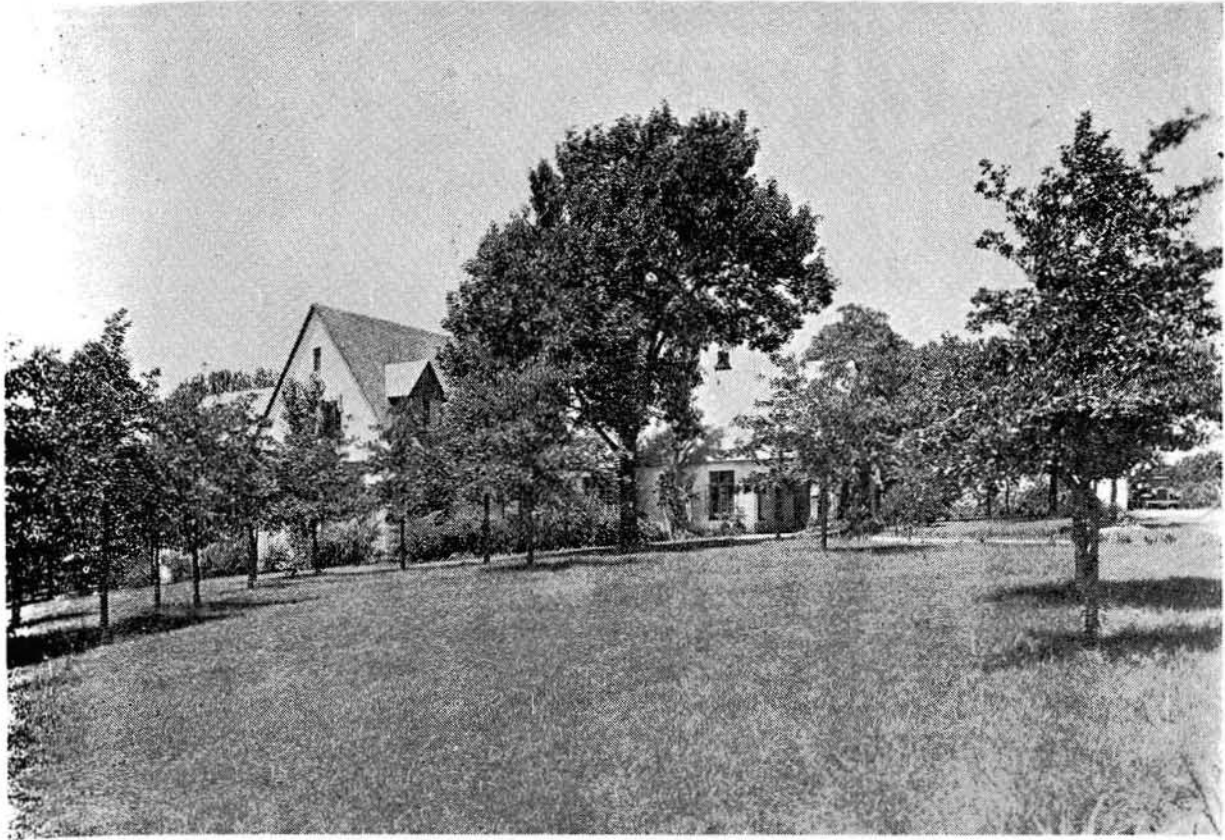
The policy of the American Nursing Association in regard to socialized medicine has been difficult to understand. It has persistently been of a passive character and many efforts within the Association to record its objection to the compulsory health insurance measures have failed. This policy has in turn been transmitted to the state and local organiza-

tions, some of which have had the courage to take a more comprehensive view of the situation. We feel that few registered nurses have any sympathy for the federal control of their profession and the medical profession, regardless of whatever policy is being advocated by the national leaders. The practicing nurse cannot fail to see what government medicine will do to the inherent freedom of the nursing profession, nor can she entertain any faith in the prospects that federal medicine might improve the public and individual health.

There is doubtless some considerable merit to the suggestion that the reluctance of the nursing profession to allign itself in the fight against socialized medicine may be due to various differences with the medical profession. The doctors and the nurses have not always seen eye to eye on many mutual problems, and the adjudication of some of these differences has long been overdue. The Tulsa County Medical Society would take the view that a closer coordination of medicine with nursing will pay immediate benefits—most importantly, in harmonizing the quality of medical care to the patient, in creating a bond of mutual understanding and good will between doctor and nurse, and in effecting a solidity of opposition to the enemies of free medicine and nursing.

Medicine is not unaware of the vital part which nursing plays in the health of the nation. Without these well developed services, much of the doctor's efforts would be in vain. In appreciation of our nurses—and in our own mutual interest—let medicine take the lead in effecting a permanent approachment with nursing.

Collections by the Medical Credit Bureau took another sharp spurt upward in January, 1951, to give the official collection agency of the Tulsa County Medical Society an all-time record high. As this issue of *The Bulletin* went to press, indications were that the January record might be equalled in February. Three more doctors were added to the Bureau's list of clients last month, bringing the total to 119.



For Convalescent Children

This hospital provides convalescent care to children ages 2-15. Graduate nurses in attendance 24 hours, modern physical therapy department and registered physical therapist, registered occupational therapist, supervised dietetics. Public school instruction under Tulsa Board of Education. Consulting Medical Staff. Contact Mrs. Lee Mulhall, Director, telephone 7-3311. Your inspection invited. Approved by Crippled Children's Commission, National Foundation For Infantile Paralysis, private insurance companies.

JUNIOR LEAGUE CONVALESCENT HOSPITAL FOR CHILDREN

4900 South Lewis Road

Telephone 7-3311

MEDICAL SERVICE SOCIETY OF AMERICA

Membership Roster, Tulsa Chapter

<i>Name:</i>	<i>Representing:</i>	<i>Telephone:</i>
Barney C. Beck	Eli Lilly Company	7-6679
William A. Cates	E. R. Squibb Co.	7-1267
C. R. Doran	Lakeside	Claremore
Carl Gibson	William S. Merrill Co.	4-0956
R. C. Gooch	Abbott Laboratories	9-4389
J. L. Hedges	Massengill	6-8538
Kyle Lloyd	Wyeth, Inc.	5-1882
Joe Loudonback	Flint-Eaton	7-1418
Ralph L. Miller	Hoffman-LaRoche	6-2928
R. Wayne Morrow	Bauer & Black	2-0598
Dan P. Payne	William S. Merrill Co.	6-5643
James J. Sample	National Drug Co.	4-9362
Tom Sellers	G. D. Searle	9-7361
Gene Thomas	Eli Lilly Company	8-1103
Bill Walker	Parke-Davis	4-9261
Preston Walker	Upjohn	7-6464
J. B. Waters	Winthrop-Stearns	9-4045



FOR NURSING IN THE HOME
 UNDER MEDICAL DIRECTION
 TELEPHONE 5-3238

SPECIAL PURPOSE FOODS

LOW-SODIUM FOODS

LOW-CALORIE FOODS

DIABETIC FOODS

Phone 3-1106

Akin's

718 S. Boulder

Professional Directory

VICTOR K. ALLEN, M. D., F.A.C.S.
Diplomate American Board of Proctology
Diseases of the Rectum
1001 Medical Arts Bldg. Tulsa

TERRELL COVINGTON, JR., M.D.
Internal Medicine
Consultation Gastroscopy
223 Court Arcade Bldg. Ph. 3-2724

S. Y. ANDELMAN, M.D.
Diagnosis & Treatment of
Arthritis & Rheumatic Diseases
1611 South Boston Ph. 2-3885

PAUL E. CRAIG, M.D.
General Surgery
411 Daniels Bldg. Ph. 4-9674

ROBERT L. ANDERSON, M.D.
Thoracic Surgery, Bronchoscopy,
and Esophagoscopy
807 Medical Arts Bldg. Tulsa

SAMUEL E. FRANKLIN, M. D.
General Surgery
1619 E. 15th Street Ph. 3-2109

B. H. BLOCKSOM, M. D., F.A.C.S.
Diplomate, Boards of Surgery, Urology
Practice Limited to Urology
901 Medical Arts Bldg. Ph. 54-1888

ROBERT E. FUNK, M.D.
Practice Limited to Internal Medicine
212 Medical Arts Bldg. Tulsa

MANUEL BROWN, M. D.
Allergic Diseases
1619 E. 15th Street Ph. 54-5552

N. C. GADDIS, M.D.
Diagnosis & Internal Medicine
Special Attention to Lung Diseases
1530 South Peoria St. Tulsa

FOR LISTINGS IN THIS
PROFESSIONAL DIRECTORY
Telephone 4-8161

C. E. GILLILAND, M.D.
Practice Limited to Internal Medicine
Gastroenterology
Suite 210 Court Arcade Bldg.
Tulsa, Oklahoma

Professional Directory

<p style="text-align: center;">JOHN F. GRAY, JR., M.D. Neuropsychiatry</p> <p>405 Medical Arts Bldg. Ph. 3-2283</p>	<p style="text-align: center;">A. T. KORNBLEE, M.D. Practice Limited To Skin Diseases Diplomate, American Board of Dermatology & Syphilology</p> <p>916 Medical Arts Bldg. Tulsa</p>
<p style="text-align: center;">HARRY GREEN, M.D. Diseases of the Skin X-Ray & Radium Therapy</p> <p>311 Medical Arts Bldg. Ph. 4-7585</p>	<p style="text-align: center;">WALTER S. LARRABEE, M.D. DELMAS B. JONES, M.D. X-Ray Diagnosis & Therapy Radium Therapy</p> <p>411 Medical Arts Bldg. Ph. 4-3111</p>
<p style="text-align: center;">MARSHALL O. HART, M.D. General Practice</p> <p>1228 South Boulder Ph. 2-5904</p>	<p style="text-align: center;">E. N. LUBIN, M.D. Diplomate, American Board of Urology Genito-Urinary Diseases 1106 Medical Arts Bldg. Office Ph. 3-6008 Res. Ph. 7-4388</p>
<p style="text-align: center;">JAMES W. KELLEY, M.D. Plastic and Reconstructive Surgery</p> <p>206 Philtower Bldg. Tulsa</p>	<p style="text-align: center;">JAMES D. MARKLAND, M.D. Allergy</p> <p>411 Medical Arts Bldg. Ph. 4-3111</p>

SPRINGER CLINIC

Sixth and Cincinnati

Tulsa

Medicine

D. O. Smith, M.D.
E. G. Hyatt, M.D.
H. A. Ruprecht, M.D.
Albert W. Wallace, M.D.
Vincel Sundgren, M.D.
Dean C. Walker, M.D.

Neurology and Psychiatry

Tom R. Turner, M.D.
Joe E. Tyler, M.D.

Neurosurgery

Averill Stowell, M.D.
Robert A. Hayne, M.D.

Pediatrics

G. R. Russell, M.D.

Telephone 5-6621

General Surgery

Carl J. Hotz, M.D.
William Pratt, M.D.

Urology

K. F. Swanson, M.D.

Ear, Nose and Throat

Donald L. Mishler, M.D.

Orthopedic Surgery

Charles E. Brighton, M.D.

Ophthalmology

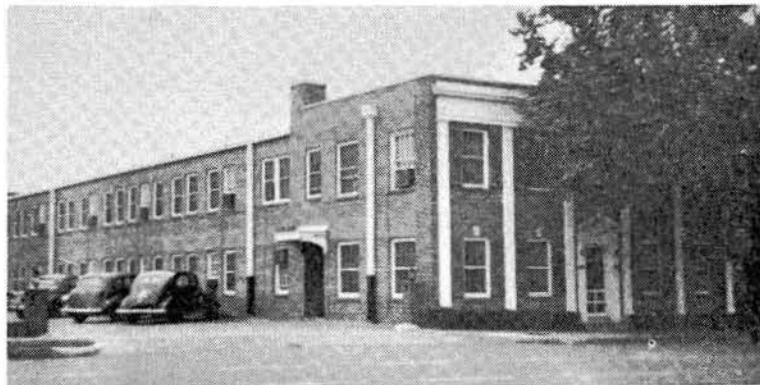
Otis S. Lee, M.D.

Anesthesia

M. R. Steel, M.D.

Professional Directory

<p>RALPH A. MCGILL, M.D., F.A.C.S. Surgery-Radium 1010 Medical Arts Bldg. Ph. 4-4215</p>	<p>L. C. NORTHRUP, M.D., F.I.C.S. Gynecology & Obstetrics 1307 S. Main Ph. 3-0151</p>
<p>EDWARD L. MOORE, M.D., F.A.C.S. Surgery Only 215 Braniff Bldg. Ph. 3-4789 Res. Ph. 7-1623</p>	<p>HERBERT S. ORR, M.D. Surgery and Obstetrics 1645 East 15th Street Ph. 4-2658 Hillcrest Exchange 3-6772</p>
<p>IRON H. NELSON, M.D. Clinical and Surgical Pathology 1107 Medical Arts Bldg. Tulsa</p>	<p>THE ORTHOPEDIC CLINIC 619 South Main Street Tulsa Practice Limited To Bone & Joint Surgery</p>
<p>MARQUE O. NELSON, M. D. Practice Limited to Dermatology Radium and X-Ray Therapy 510 Medical Arts Bldg. Tulsa</p>	<p>JOHN E. McDONALD, M.D. FRANK A. STUART, M.D. JOHN C. DAGUE, M.D.</p>



TULSA CLINIC

915 South Cincinnati
TULSA, OKLAHOMA

COMPLETE CLINIC FACILITIES

ANDRE B. CARNEY, M. D.

R. G. RAY, M. D.
EARL M. LUSK, M. D.
H. W. FORD, M. D.
W. M. JONES, M. D.

O. L. HILL, M. D.
JAMES C. PETERS, M. D.
CRAIG S. JONES, M. D.
CHARLES H. GLASS, D. D. S.

Telephone 4-0177

MISS BETTYE ADAMS, Director

A. D. MASON, Business Manager

Professional Directory

<p>R. C. PIGFORD, M.D., F.A.C.P. H. O. LOYD, M.D. American Board of Internal Medicine Cardiovascular Diseases 203 Court Arcade Bldg. Ph. 3-8860</p>	<p>WADE SISLER, M.D. Orthopedic Surgery 8th & Elgin Ph. 5-3123</p>
<p>SIMON POLLACK, M.D., D.A.B.R. Diagnostic and Therapeutic Radiology 316 Braniff Bldg. Ph. 2-7517</p>	<p>CHARLES G. STUARD, M.D. Ophthalmology 221 Court Arcade Bldg. Ph. 4-3435</p>
<p>J. L. RICHARDSON, M.D. Orthopedic & Traumatic Surgery 19 West 10th St. Tulsa</p>	<p>LEON H. STUART, M.D., F.A.C.R. X-Ray Diagnosis 1107 Medical Arts Bldg. Ph. 54-5348</p>
<p>HERSCHEL J. RUBIN, M.D. Diplomate American Board of Pediatrics Diseases of Infants & Children 1619 East 15th St. Tulsa</p>	<p>JAMES B. THOMPSON, M. D. General Surgeon Diplomate, American Board of Surgery 1001 Medical Arts Bldg. Ph. 3-3318</p>
<p>PHILIP M. SCHRECK, M.D. Internal Medicine 201-202 Medical Arts Bldg. Tulsa</p>	<p>DRS. TRAINOR & FIRST Cardiology & Electrocardiology W. J. TRAINOR, M.D. SAFETY R. FIRST, M.D. 1011 Medical Arts Bldg. Ph. 5-7545</p>
<p>MAURICE J. SEARLE, M.D. Pediatrics Diplomate, American Board of Pediatrics 512 Medical Arts Bldg. Tulsa</p>	<p>WILLIAM RAY TURNBOW, M.D. Diagnostic & Therapeutic Blocks 2112 W. 41st St. Ph. 5-0653</p>
<p>J. D. SHIPP, M.D. Surgery and Diseases of the Colon and Rectum 708 Medical Arts Bldg. Tulsa</p>	<p>ARNOLD H. UNGERMAN, M.D. MILFORD S. UNGERMAN, M.D. Diagnosis & Treatment of Nervous and Mental Diseases 404 Medical Arts Bldg. Ph. 2-3151</p>
<p>W. A. SHOWMAN, M.D. Dermatology 408 Medical Arts Bldg. Ph. 3-7789</p>	<p>R. M. WADSWORTH, M.D. Pediatrics 1445 S. Quaker Ph. 3-4300</p>
<p>F. D. SINCLAIR, M.D., F.A.C.S. Certified American Board of Obstetrics & Gynecology 307 Medical Arts Bldg. Ph. 5-5337</p>	<p>J. E. WALLACE, M.D. Gynecology 1328 S. Peoria Ph. 2-6501</p>



For
**RADIANT HEALTH
BUOYANT ENERGY
SOUND BONES
BEAUTIFUL TEETH**

We Recommend
**Homogenized
'VITAMIN D' MILK**

Fortified With 400 U.S.P. Units
Vitamin D Per Quart, By Vitex Process

Beatrice Foods Co.

215 North Denver

Telephone 4-2471

Research recognizes the benefits to be derived from more calcium in the adult diet. Without milk or its products, it is almost impossible to meet dietary calcium needs with common foods.

DAIRY COUNCIL OF TULSA

ESTHER M. MUSIL, *Nutritionist*

312 Wright Building

Telephone 4-8280

Sec. 34.66 P. L. & R.

U. S. POSTAGE

PAID

TULSA 3, OKLA.
PERMIT No. 13

(Return Postage Guaranteed)

Be Certain with Curtain

CURTAINS PRESCRIPTION LABORATORY

SIXTH AND BOULDER

PHONE 4-7116

Across the Street North From Medical Arts Bldg.

MERKEL X-RAY CO.

Exclusive Distributors For—

Westinghouse X-Ray Equipment

Physical Therapy Equipment



**Complete Stock
X-Ray and Physical Therapy
Supplies**



TULSA

1114 S. Boulder

Tel. 2-4897

OKLAHOMA CITY

1130 N. Hudson

Tel. 2-3522

MID-CONTINENT SURGICAL SUPPLY CO.

**Hospital and Physicians
Equipment and Supplies
X-Ray Equipment**

*The Complete
Surgical Supply Store*

We carry a complete stock of instruments, rubber goods, surgical dressings, sutures, laboratory stains or reagents, enamel-ware, examining room furniture, wheel chairs, supports and trusses.

PHONE 2-8169

TULSA

610 SOUTH BOSTON

Commercial Printing Company **PRINTERS**

We Print the Bulletin

OFFICE AND PLANT AT 417 EAST 3RD STREET

R. W. (Bob) HUDSON

Publications, Programs
Advertising Literature,
Office and Factory Forms
Fine Personal Stationery

TELEPHONE 2-2450