

TULSA COUNTY MEDICAL SOCIETY

JUL 6 1950



THE BULLETIN

of the Tulsa County Medical Society

Build Tulsa



IN THIS ISSUE



Tulsa Surgeon Heads
State Medical Association



Tulsa Medical Directory



Annual Membership Roster Of
The Tulsa County Medical Society



The Medical Library

Contribute Now To
**THE OKLAHOMA
MEDICAL
RESEARCH
FOUNDATION**

*Your Part In Building
America's Future*

July, 1950

Vol. 16

No. 7

2 new evaporated milk and Dextri-Maltose formulas for infants



**Liquid
Formulas**
•
Convenient
•
**Simple to
Prepare**
•
**Nutritionally
Sound**
•
**Generous in
Protein**

FOR ALMOST FOUR DECADES physicians have recognized the merits of infant-feeding formulas of cow's milk, water and Dextri-Maltose*.

In LACTUM and DALACTUM, Mead's brings new convenience to such formulas—for LACTUM and DALACTUM are prepared for use simply by adding water.

LACTUM, a whole milk formula, is designed for full term infants with normal nutritional needs. DALACTUM is a low fat formula for both premature and full term infants with poor fat tolerance. Both are generous in protein.

*T. M. Reg. U. S. Pat. Off.



MEAD JOHNSON & CO.
EVANSVILLE 21, IND., U. S. A.

Representative: Wm. M. Coulter, 1524 W. Pine, Wichita 3, Kansas, Telephone 2-1909

“The . . . estrogen preferred by us is ‘Premarin,’ a mixture of conjugated estrogens, the principal one of which is estrone sulfate.”

Hamblen, E. C.: North Carolina M. J. 7:533 (Oct.) 1946.

Four potencies of “Premarin” permit flexibility of dosage: 2.5 mg., 1.25 mg., 0.625 mg. and 0.3 mg. tablets; also in liquid form, 0.625 mg. in each 4 cc. (1 teaspoonful).

“PREMARIN”[®]

In treating the menopausal syndrome with “Premarin,” Perloff* reports that “Ninety-five and eight-tenths per cent of patients treated with 3.75 mg. or less daily obtained complete relief of symptoms”; also, “General tonic effects were noteworthy and the greatest percentage of patients who expressed clear-cut preferences for any drug designated ‘Premarin.’”

Thus, the sense of “well-being” usually imparted represents a “plus” in “Premarin” therapy which not only gratifies the patient but is conducive to a highly satisfactory patient-doctor relationship.

*Perloff, W. H.: Am. J. Obst. & Gynec. 58: 684 (Oct.) 1949.



While sodium estrone sulfate is the principal estrogen in “Premarin”, other equine estrogens . . . estradiol, equilin, equilenin, hippulin . . . are probably also present in varying amounts as water-soluble conjugates.

Estrogenic Substances (water-soluble) also known as Conjugated Estrogens (equine)

Ayerst, McKenna & Harrison Limited
22 East 40th Street, New York 16, N. Y.

5003



*Telephone
Your Prescriptions —*

Dial 2-3119 — For Prompt
Attention or Delivery

**T. ROY
BARNES
DRUGRY**

603 S. Boulder

A black and white advertisement for Coca-Cola. The central image shows a hand holding a condensation-covered glass bottle of Coca-Cola. The bottle is tilted, and the iconic script logo is visible on the glass. In the background, a circular graphic contains the word "Drink" above the "Coca-Cola" script logo, with the words "Delicious and Refreshing" below it. In the bottom right corner, the slogan "THE DRINK EVERYBODY KNOWS" is written in large, bold, sans-serif capital letters.

Drink
Coca-Cola
Delicious and
Refreshing

**THE
DRINK
EVERYBODY
KNOWS**

GETMAN'S

ROY R. GETMAN, Founder



*Sixth and Main Sts.
Phone - 3 6171*

JULY

This store celebrated its first 4th of July just 47 years ago!

It is our wish that ALL of us in AMERICA may always continue to have the privilege of saluting the things that great day stands for and we shall continue to fight for that right!

FREE DELIVERY NIGHT AND DAY.

WE GIVE S & H GREEN STAMPS

Sponsors of the "Tell Me, Doctor" Radio Broadcasts at 5:15 P.M. each Monday through Friday, KTUL, prepared by The Oklahoma State Medical Association.

CONTENTS

Dr. McGill Assumes Presidency	7
President's Page	8
Official Membership Roster	9
Honorary Members	12
Tulsa Medical Directory	13
The Medical Library	17
Dr. Farris Honored	18
Dr. James L. Miner Obituary	18
Auxiliary Commended	22
Dr. Charbonnet Honored	22
Personals	24

ADVERTISERS

Akin's Natural Foods	20
Ayerst, McKenna & Harrison	3
Ball Drug Company	20
Beatrice Foods, Inc.	31
Ciba Pharmaceutical Products	19
Commercial Printing Co.	32
Courtright-Optician	32
Curtain's Prescription Laboratory	31
Daricraft	24
Dairy Council of Tulsa	27
Eli Lilly & Company	6
Flower Hospital	26
Getman Drug Store	5
Harvard Drug Store	24
Hillcrest Hospital	21
Junior League Home	25
Mead Johnson & Company	2
Medical Arts Prescription Shop	15
Medical Service Society	26
Merkel X-Ray Co.	32
Mid-Continent Surgical Supply Co.	32
F. H. Paxton Co.	22
Professional Directory	28
Professional Drug Shop	16
Public Health Association	27
Raley-Shaddock Pharmacy	21
Research Foundation Sanitarium	16
Springer Clinic	29
St. John's Hospital	24
T. Roy Barnes Drugry	4
Van Pelt and Brown	23



"Sweet is pleasure after pain" — as Dryden put it — might well be a description of the welcome relief from discomfort which is bestowed upon injured skin or the mucosa of the genito-urinary and rectal areas by 'Surfacaine' (Cyclomethycaine, Lilly). A single topical application usually produces anesthesia lasting up to eight hours. Its low toxicity, however, permits more frequent use in extremely severe conditions. Available in a wide variety of effective forms:

OINTMENT • CREAM • LOTION • SUPPOSITORIES • JELLY

SURFACAINÉ

ELI LILLY AND COMPANY • INDIANAPOLIS 6, INDIANA, U. S. A.

Complete literature on 'Surfacaine' is available from your Lilly medical service representative or will be forwarded upon request.

THE BULLETIN

OF THE

TULSA COUNTY MEDICAL SOCIETY

Fred E. Woodson, M.D., *President*W. A. Showman, M.D., *President-Elect*Marshall O. Hart, M.D., *Vice-President*John G. Matt, M.D., *Secretary-Treasurer*Jack Spears, *Executive Secretary*

Vol. 16

TULSA, OKLAHOMA, JULY, 1950

No. 7

DR. MCGILL ASSUMES STATE PRESIDENCY

Annual State Dues Remain At \$42.00. Dr. V. K. Allen New Councilor From Tulsa County. Negro Physicians Invited To Attend Scientific Sections Of 1951 Convention.

Dr. Ralph A. McGill, prominent Tulsa surgeon, was inaugurated as President of the Oklahoma State Medical Association in ceremonies at the 57th Annual Meeting of the organization at Oklahoma City last June 6, 1950.

In an inaugural address Dr. McGill called for continued cooperation of the membership in maintaining and expanding the Association's well rounded program of activities.

Other officers named by the Association's House of Delegates in the annual election conducted June 4, 1950, included Dr. L. Chester McHenry, Oklahoma City otolaryngologist, President - Elect; Dr. E. Malcolm Phelps, El Reno, Vice-President; Dr. Alfred R. Sugg, Ada, Speaker of the House of Delegates; Dr. W. K. Haynie, Durant, Vice-Speaker; Dr. James Stevenson, Tulsa, reelected as Delegate to the American Medical Association; Dr. Maurice J. Searle, Tulsa, Alter-

nate Delegate to the AMA; and Dr. Victor K. Allen, named as Councilor from the Eighth District (Tulsa County), to succeed Dr. Searle.

The House of Delegates also took the following official action:

(1) Again placed annual membership dues for 1951 at \$42.

(2) Approved a constitutional amendment making the American Medical Association's annual levy of dues mandatory upon the membership of the State Association. The 1950 levy of \$25.00 is thus required of all members except those exempted for cause by action of the county medical society.

(3) Accepted an invitation of the Tulsa County Medical Society to hold its 1951 annual meeting in Tulsa.

(4) Invited colored physicians of Oklahoma to attend the scientific sections of the Association's 1951 and subsequent

(Continued On Page 20)



DR. RALPH A. MCGILL

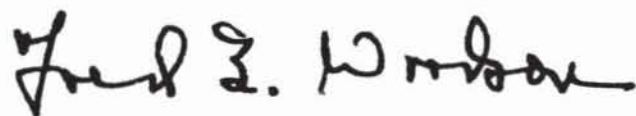
PRESIDENT'S PAGE

This is a time of the year when most of us turn our thoughts to the pleasures of vacation—to rod and reel, sun and shore, pine-covered mountains, the excitement of the big city, or maybe to just the relaxation of digging in the garden of our own home. It has now been five years since the close of the war, but some of us are still keeping the exhaustive pace that the requirements of a wartime practice necessitated. While most of us have recognized the importance and desirability of an annual vacation from our professional duties, some have not. True, we may keep promising ourselves that vacation, but somehow we never seem to get around to it.

To my way of thinking, a rest from the everyday routine is essential to everyone. Most of all, it is essential to the doctor—a man whose responsibilities are bound up in human welfare, and often in life and death. All too often, his pitifully few days away from the office are spent in attending medical meetings—wonderful and essential in their way—but not a substitute for a carefree vacation rest.

May I urge each of you to make your plans now for at least a week away from your office. Do that fishing you've promised yourself, take that trip you wanted to make last year. Get someone to see your patients while you are gone. Chances are you'll return rested and refreshed, better equipped to do your job of treating the sick, more aware and appreciative of the pleasures of modern living.

Sincerely,



President

OFFICIAL MEMBERSHIP ROSTER

TULSA COUNTY MEDICAL SOCIETY

ACTIVE MEMBERS

Doctor	Address	Telephone
Adams, George M.,	1419 E. 15th	4-9637
Adams, Richard M.,	Interstate Oil Pipeline Co., Nat'l Bank of Tulsa Bldg. (Ind)	5-5581
Akins, Jack O.,	1101 Medical Arts Bldg. (U)	5-5646
Allen, Victor K.,	1001 Medical Arts Bldg. (Proc)	3-0858
Andelman, Sumner Y.,	1611 So. Boston (I)	2-3885
Anderson, Robert L.,	807 Medical Arts Bldg. (Thoracic S)	3-0038
Apffel, Phillip Richard,	Child Guidance Clinic, 602 S. Cheyenne (Child P)	5-9676
Armstrong, O. C.,	902 Medical Arts Bldg.	4-4388
Atchley, Roger Q.,	507 Medical Arts Bldg. (S)	2-2239
Atkins, Paul N.,	1001 Medical Arts Bldg.	3-5295
Atkins, Paul N., Jr.,	210 Braniff Bldg. (S)	2-5159
Bailey, Byron L.,	212 Medical Arts Bldg. (I)	4-1159
Barham, J. H.,	Daniel Bldg.	3-9456
Beddoe, Harold L.,	Tulsa Police Dept., 4th & Elgin	5-1211
Berg, Milton L.,	3505 S. Peoria	7-4441
Billington, J. Jeffrey,	706 Medical Arts Bldg.	3-0251
Bivens, William S.,	507 Medical Arts Bldg. (S)	2-2239
Black, Harold J.,	416 Medical Arts Bldg.	4-9332
Blocksom, Berget H.,	901 Medical Arts Bldg. (U)	54-1888
Boone, Wilmot B.,	4117 S. 26th W.	5-0249
Boyd, Hugh,	908 Medical Arts Bldg.	2-8233
Bradfield, Samuel J.,	607 Medical Arts Bldg.	2-2328
Brighton, Charles E.,	Springer Clinic, 604 S. Cincinnati (Orth)	5-6621
Brocksmith, Henry A.,	Court Arcade Bldg. (I)	3-2038
Brogden, James C.,	801 Medical Arts Bldg. (S)	2-2516
Brown, Manuel,	1619 E. 15th (All)	54-5552
Brown, Walter E.,	Glass-Nelson Clinic, 2020 S. Xanthus (R)	7-3341
Browne, Henry S.,	615 Medical Arts Bldg. (U)	2-4515
Bryan, William J.,	801 Medical Arts Bldg. (I)	4-1011
Buchan, William,	203 Braniff Bldg. (S)	2-0228
Caldwell, Charles L.,	115 E. 18th	4-5651
Calhoun, C. E.,	Sand Springs, Oklahoma	S. S. 36
Calhoun, Walter H.,	1104 Medical Arts Bldg.	4-6233
Capehart, John D., Jr.,	814-A N. Osage Drive	5-7767
Carney, Andre B.,	Tulsa Clinic, 915 S. Cincinnati (S)	4-0177
Chalmers, J. S.,	Sand Springs, Oklahoma (Ind)	S.S. 100
Childs, J. W.,	501 Medical Arts Bldg.	4-6725
Cohenour, Howard M.,	902 Medical Arts Bldg. (U)	5-8467
Coulter, Thomas B.,	1011 Medical Arts Bldg.	3-9963
Craig, Paul E.,	411 Daniel Bldg.	4-9674
Crane, Donald V.,	1116 Medical Arts Bldg. (Oph)	4-4189
Crawford, William S.,	Carter Oil Co., Nat'l Bank of Tulsa Bldg. (Ind)	2-6101
Cubler, Edward W.,	St. John's Hospital, 1923 S. Utica (Anes)	7-4268
Dague, John C.,	412 Tri-State Insurance Bldg. (Orth)	5-5501
Daily, Raymond E.,	Bixby, Oklahoma	
Davis, Arthur H.,	710 Medical Arts Bldg. (EENT)	2-3045
Davis, George M.,	Bixby, Oklahoma	
Davis, Thomas H.,	Glass-Nelson Clinic, 2020 S. Xanthus (S)	7-3341
Dean, W. A.,	607 Medical Arts Bldg. (Ob)	3-3900
Dodd, Nevin W.,	1453 S. Quaker	4-6853
Eads, Charles H.,	609 Medical Arts Bldg. (Ob-Gyn)	3-1330
Echols, Raymond S.,	St. John's Hospital, 1923 S. Utica (Anes)	7-4268
Edwards, D. L.,	Glass-Nelson Clinic, 2020 S. Xanthus (Oph)	7-3341
Etherton, Monte C.,	10-A South Lewis	4-6663
Evans, Hugh J.,	216 Medical Arts Bldg. (EENT)	2-4268
Ewell, William C.,	1307 S. Main (Ob)	3-0151
Farris, H. Lee,	303 Medical Arts Bldg.	4-5533
First, Safety R.,	1011 Medical Arts Bldg. (Cardiac)	5-7545
Flack, F. L.,	McFarlin Bldg. (Ind-S)	3-2612

Doctor	Address	Telephone
Ford, H. W.,	Tulsa Clinic, 915 S. Cincinnati	4-0177
Forrest, Herbert J.,	1419 E. 15th (S)	4-9637
Forry, Willis W.,	Bixby, Oklahoma	
Franklin, Onis,	Broken Arrow, Oklahoma	
Franklin, Samuel E.,	1619 E. 15th (S)	3-2109
Fulcher Joseph,	1008 Medical Arts Bldg. (U)	3-4429
Funk, Robert E.,	212 Medical Arts Bldg. (I)	4-1159
Gaddis, N. C.,	1530 S. Peoria (I)	4-5978
Garrett D. L.,	701 Medical Arts Bldg. (S)	4-1930
Gastineau, Felix T.,	205 Medical Arts Bldg. (Oph)	4-2416
Gilliland, Charles E.,	Court Arcade Bldg. (I)	3-2654
Glass, Fred A.,	Glass-Nelson Clinic, 2020 S. Xanthus (S)	7-3341
Goddard, R. K.,	Skiatook, Oklahoma	
Goen, Rayburne W.,	303 Braniff Bldg. (I-C&L)	5-5559
Goodman, Samuel,	603 Medical Arts Bldg. (I)	4-3141
Gorrell, Ben,	1109 Medical Arts Bldg. (EENT)	3-5378
Gorrell, John Franklin,	1109 Medical Arts Bldg. (EENT)	3-5378
Graham, Hugh C.,	1307 S. Main (Ped)	5-3455
Gray, John F., Jr.,	405 Medical Arts Bldg. (NP)	3-2283
Green, Harry,	311 Medical Arts Bldg. (Derm)	4-7585
Grosshart, Paul L.,	302 Medical Arts Bldg. (S)	3-5600
Grubb, Robert D.,	1307 S. Main (I)	3-0151
Haralson, Charles H.,	310 Medical Arts Bldg. (Oph)	3-0873
Hardman, Thomas J.,	502 Medical Arts Bldg. (S)	2-5684
Harris, Bunn,	Jenks, Oklahoma	
Hart, Mabel M.,	Tulsa County Red Cross Blood Center, 602 S. Cheyenne	5-3281
Hart, Marshall O.,	1228 S. Boulder	2-5904
Hayne, Robert A.,	Springer Clinic, 604 S. Cincinnati (NS)	5-7153
Hays, Luvern,	2445 E. 27th Pl. (Ped)	7-3788
Henderson, F. W.,	2541 E. 11th Pl.	6-8644
Henderson, William H.,	301 Oklahoma Natural Bldg. (Ob-Gyn)	5-7797
Henley, Marvin D.,	911 Medical Arts Bldg. (EENT)	2-6358
Henry, Gifford H.,	212 Court Arcade Bldg. (S)	3-1878
Hill, O. L.,	Tulsa Clinic, 915 S. Cincinnati	4-0177
Hoke, C. C.,	Philtower Bldg. (S)	2-8372
Hoover, W. D.,	201 Stanolind Bldg.	2-5143
Hotz, Carl J.,	Springer Clinic, 604 S. Cincinnati (S)	5-6621
Huber, Walter A.,	205 Medical Arts Bldg. (Oph)	4-2416
Hudson, David V.,	Tulsa Cooperative Clinic, 521 N. Boulder (PH)	4-6672
Hudson, Margaret G.,	City Health Dept., 521 N. Boulder	4-2138
Humphrey, B. H.,	Sperry, Oklahoma	
Hyatt, E. G.,	Springer Clinic, 604 S. Cincinnati (I)	5-6621
Johnson, E. O.,	209 Medical Arts Bldg. (Ob-Gyn)	4-2010
Johnson, Maxwell A.,	Glass-Nelson Clinic, 2020 S. Xanthus (U)	7-3341
Johnson, R. Chadwick,	Sand Springs, Okla.	S.S.102
Johnson, R. R.,	Sand Springs, Oklahoma	S.S. 102
Johnson, Robert Hall,	Glass Nelson Clinic, 2020 S. Xanthus (Orth)	7-3341
Jones, Craig S.,	Tulsa Clinic, 915 S. Cincinnati (I)	4-0177
Jones, Delmas B.,	411 Medical Arts Bldg. (R)	4-3111
Jones, W. M.,	Tulsa Clinic, 915 S. Cincinnati (EENT)	4-0177
Kelley, James W.,	206 Philtower Bldg. (Plastic S)	3-4730
Kemmerly, H. P.,	1419 E. 15th (Anes)	4-9637
Kornblee, A. T.,	916 Medical Arts Bldg. (Derm)	54-5661
Kramer, Allen C.,	607 Medical Arts Bldg.	3-8874
Larrabee, Walter S.,	411 Medical Arts Bldg. (R)	4-3111
Layton, O. E.,	Collinsville, Oklahoma	
Lee, J. K.,	Court Arcade Bldg. (I)	2-8484
Lee, Otis S.,	Springer Clinic, 604 S. Cincinnati (Oph)	5-6621
LeMaster, D. W.,	902 Medical Arts Bldg.	5-7925
Lhevine, Morris B.,	B-7 Medical Arts Bldg. (R)	3-5294
Lindstrom, W. Carl,	1001 Medical Arts Bldg. (Ob-Gyn)	3-1413
Loney, William R. R.,	304 Medical Arts Bldg. (Ob)	4-9023
Lowe, J. O.,	Thompson Bldg.	2-6462
Lubin, Emanuel N.,	1106 Medical Arts Bldg. (U)	3-6008
Lusk, Earl M.,	Tulsa Clinic, 915 S. Cincinnati (Ob-Gyn)	4-0177
Lyons, Mason R.,	Turley, Oklahoma	5-5451
McDonald, John E.,	412 Tri-State Insurance Bldg. (Orth)	5-5501
McDowell, Richard E.,	Perry Clinic, 222 E. 5th (S)	5-5508
McGill, Ralph A.,	1010 Medical Arts Bldg. (S)	4-4215

Doctor	Address	Telephone
McGraw, Willard L.,	1332 S. Lewis	6-6611
MacKenzie, Ian,	1104 Medical Arts Bldg. (Orth)	2-3412
Margolin, Berthe,	2739 E. 22nd (Anes)	7-5433
Markland, James D.,	411 Medical Arts Bldg. (All)	4-3111
Martin, Ralph F.,	Sand Springs, Oklahoma	S.S. 1260
Matt, John G.,	1001 Medical Arts Bldg. (Proc)	2-1014
Mery, Albert M.,	Braniff Bldg. (I)	5-5559
Miller, Elnora G.,	McBirney Bldg.	2-8813
Miller, George H.,	Atlas Life Bldg. (S)	2-6669
Mishler, Donald L.,	Springer Clinic, 604 S. Cincinnati (Oto)	5-6621
Mitchell, Tom Hall,	Carter Oil Company, Nat'l Bank of Tulsa Bldg. (Ind)	2-6101
Mohrman, S. S.,	1818 E. 15th	6-0959
Moore, Edward L.,	Braniff Bldg. (S)	3-4789
Mulmed, Earl I.,	Braniff Bldg. (I)	54-3028
Munding, L. A.,	1001 Medical Arts Bldg.	4-0964
Murdock, H. D.,	1011 Medical Arts Bldg. (S)	3-5915
Murray, P. G.,	506 Medical Arts Bldg. (Ob)	3-2867
Murray, Silas,	501 Medical Arts Bldg. (Ob)	2-8090
Neal, James H.,	City Health Dept., 521 N. Boulder (PH)	4-2138
Nelson, F. L.,	Atlas Life Bldg. (S)	3-7873
Nelson, Frank J.,	Glass-Nelson Clinic, 2020 S. Xanthus (I)	7-3341
Nelson, I. H.,	1107 Medical Arts Bldg. (Path)	4-1835
Nelson, Marque O.,	510 Medical Arts Bldg. (Derm)	4-3532
Newlin, W. H.,	Broken Arrow, Okla.	
Nicholas, Hugh,	1918 N. Oxford	6-3721
Northrup, Laurence C.,	1307 S. Main (Ob-Gyn)	3-0151
Orr, Herbert S.,	1645 E. 15th (S)	4-2658
Palik, Emil E.,	St. John's Hospital, 1923 S. Utica (Path)	7-3361
Park, Felix R.,	404 Medical Arts Bldg. (I)	2-9589
Pascucci, Lucien,	St. John's Hospital, 1923 S. Utica (R)	7-3361
Pavy, Chester A.,	801 Medical Arts Bldg. (EENT)	4-3207
Peden, James C.,	612 Medical Arts Bldg.	2-9018
Perry, Daniel L.,	Perry Clinic, 222 E. 5th	5-5508
Perry, Fred J.,	214 Braniff Bldg.	4-1472
Perry, Hugh,	Perry Clinic, 222 E. 5th (S-Ob)	5-5508
Perry, John C.,	808 Medical Arts Bldg. (S)	2-7622
Peters, James C.,	Tulsa Clinic, 915 S. Cincinnati (I)	4-0177
Pigford, Russell C.,	Court Arcade Bldg. (I)	3-8860
Pollack, Simon,	216 Braniff Bldg. (R)	2-7517
Porter, Horace H.,	Court Arcade Bldg.	4-1272
Pratt, William C.,	Springer Clinic, 604 S. Cincinnati (S)	5-6621
Presson, L. C.,	1948 N. Main	2-3383
Ray, R. G.,	Tulsa Clinic, 915 S. Cincinnati	4-0177
Reese, K. C.,	1102 Medical Arts Bldg. (Ped)	3-1114
Reynolds, E. W.,	Tulsa Clinic, 915 S. Cincinnati (Ob)	4-0177
Rhodes, R. E. L.,	509 Medical Arts Bldg.	3-4550
Richardson, Jack Leahy,	19 W. 10th (Orth)	3-3822
Roberts, T. R.,	Wright Bldg.	4-2833
Rogers, James W.,	406 Medical Arts Bldg. (U)	2-7735
Rubin, H. J.,	1619 E. 15th (Ped)	54-5273
Ruprecht, Homer A.,	Springer Clinic 604 S. Cincinnati (I)	5-6621
Rushing, F. E.,	517 Medical Arts Bldg.	3-5542
Russell, G. R.,	Springer Clinic, 604 S. Cincinnati (Ped)	5-6621
Salamy, Joseph,	2523 E. 11th	9-9670
Sanger, Walter B.,	211 Medical Arts Bldg. (Ob-Gyn)	5-9063
Schreck, Phillip M.,	202 Medical Arts Bldg. (I)	4-8409
Searle, Maurice J.,	512 Medical Arts Bldg. (Ped)	4-2901
Sethney, Walter F.,	2828 E. 15th (Ped)	9-3987
Shapiro, David,	1101 E. 15th	2-0178
Shepard, Robert M., Jr.,	902 Medical Arts Bldg. (S)	5-8467
Shepard, R. M.,	306 Medical Arts Bldg. (C&L)	4-1821
Shepard, S. C.,	406 Medical Arts Bldg. (I)	3-7023
Sherwood, R. G.,	Court Arcade Bldg.	3-9849
Shipp, J. D.,	316 Medical Arts Bldg. (Proc)	4-5670
Showman, W. A.,	409 Medical Arts Bldg. (Derm)	3-7789
Simpson, Carl F.,	502 Medical Arts Bldg. (Ob)	2-5403
Sinclair, Franklin D.,	307 Medical Arts Bldg. (Ob-Gyn)	5-5337
Sippel, Mary Edna,	1544 E. 15th	2-8560
Sisler, Wade,	Mercy Hospital, 807 S. Elgin (Orth)	5-3123

Doctor	Address	Telephone
Smith, D. O.,	Springer Clinic, 604 S. Cincinnati (I)	5-6621
Smith, Ruric N.,	1017 Medical Arts Bldg. (EENT)	3-3208
Smith, Wendell L.,	2431 E. Admiral	6-2380
Smith, William Orlando,	Tri-State Insurance Bldg. (EENT)	3-5194
Spann, Logan A.,	203 Braniff Bldg.	2-0216
Springer, M. P.,	Springer Clinic, 604 S. Cincinnati	5-6621
Stallings, T. W.,	724 S. Elgin (EENT)	2-2641
Steel, Marcella R.,	1356 E. 27th Pl. (Anes)	3-7537
Stevenson, James,	615 Medical Arts Bldg. (Derm)	5-2562
Stewart, H. B.,	St. John's Hospital, 1923 S. Utica (Anes)	7-4268
Stokes, E. Malcolm,	1415 E. 15th (Ob-Gyn)	4-8657
Stokes, Lowell L.,	517 Medical Arts Bldg.	3-3581
Stowell, Averill,	Springer Clinic, 604 S. Cincinnati (NS)	5-6621
Strong, Paul T.,	Glass-Nelson Clinic, 2020 S. Xanthus (I)	7-3341
Stuard, Charles G.,	Court Arcade Bldg. (Oph)	4-3435
Stuart, Frank A.,	Tri-State Insurance Bldg. (Orth)	5-5501
Stuart, Leon H.,	1107 Medical Arts Bldg. (R)	54-5348
Stuart, Royal E.,	Glass-Nelson Clinic, 2020 S. Xanthus (Oto)	7-3341
Summers, C. S.,	611 Daniel Bldg.	3-9011
Sundgren, Vincel,	Springer Clinic, 604 S. Cincinnati (I)	5-6621
Swanson, Karl F.,	Springer Clinic, 604 S. Cincinnati (U)	5-6621
Thomas, William F., Jr.,	100 Braniff Bldg. (Ob-Gyn)	4-1642
Thompson, James B.,	1001 Medical Arts Bldg. (S)	3-3318
Thompson, Oliver H.,	Court Arcade Bldg.	3-7444
Trainor, W. J.,	1011 Medical Arts Bldg. (I)	5-7545
Turnbow, William R.,	2112 W. 41st	5-0653
Turner, Tom R.,	Springer Clinic, 604 S. Cincinnati (P)	5-6621
Tyler, Joe E.,	Springer Clinic, 604 S. Cincinnati (P)	5-6621
Underwood, David J.,	815 Medical Arts Bldg. (Ped)	3-7475
Underwood, F. L.,	1001 Medical Arts Bldg.	3-5514
Ungerman, Arnold H.,	708 Medical Arts Bldg. (P)	2-3151
Ungerman, Milford S.,	708 Medical Arts Bldg. (P)	2-3151
Wadsworth, R. M.,	1445 S. Quaker (Ped)	3-4300
Walker, Dean C.,	Springer Clinic, 604 S. Cincinnati (I)	5-6621
Walker, William A.,	Kennedy Bldg.	4-5257
Wallace, Albert W.,	Springer Clinic, 604 S. Cincinnati (I)	5-6621
Wallace, J. E.,	914 Medical Arts Bldg. (Gyn)	2-6501
Ward, Benjamin W.,	Wright Bldg. (S)	3-0081
White, Harold A.,	701 Medical Arts Bldg. (S)	4-1900
White, Eric M.,	312 Medical Arts Bldg.	3-1181
White, James W.,	Braniff Bldg. (Ped)	2-4735
White, N. Stuart,	312 Medical Arts Bldg.	3-1181
Wilcox, Louise,	908 Medical Arts Bldg. (Anes)	2-8233
Wiley, A. Ray,	812 Medical Arts Bldg. (S)	3-0202
Williams, Theodore S.,	210 Medical Arts Bldg.	3-8443
Wilner, Sol,	B-7 Medical Arts Bldg. (R)	3-5294
Witcher, Robert B.,	909 Medical Arts Bldg.	2-4673
Wolff, Eugene G.,	St. John's Hospital, 1923 S. Utica (Anes)	7-4268
Woodson, Fred E.,	908 Medical Arts Bldg. (Anes)	2-8233
Wright, Kenneth L., Jr.,	4107 $\frac{1}{2}$ -A E. 11th	92-1486
Yandell, Hays R.,	Glass-Nelson Clinic, 2020 S. Xanthus (S)	7-3341

HONORARY MEMBERS

Brookshire, J. E.,	Ritz Building	3-5094
Brown, Paul R.,	1614 E. 35th	3-9903
Charbonnet, P. N.,	Pensacola, Florida	
Clinton, Fred S.,	230 E. Woodward Blvd.	3-0014
Cook, W. Albert,	1106 Medical Arts Bldg.	3-6008
Hall, Gilbert H.,	Trimble Bldg.	3-8316
Hcooper, Joel S.,	U. S. Veterans Facility, Muskogee, Okla.	
Lynch, Thomas J.,	2132 E. 24th	7-4172
Mayginnes, P. H.,	1624 S. Norfolk	3-1244
Nesbitt, E. P.,	240 Orchard Street, East Lansing, Michigan	
Nesbitt, P. P.,	1565 Swan Drive	3-1730
Reynolds, J. L.,	Orpheum Bldg.	3-5659
Venable, Sidney C.,	1757 S. Columbia	7-1067
Wall, Gregory A.,	1202 N. Main	2-3710

TULSA MEDICAL DIRECTORY

TULSA COUNTY MEDICAL SOCIETY

Executive Offices: 1202 Medical Arts Building, Tulsa 3, Oklahoma. Telephone 4-8161. Hours 8:30 A.M.-5:00 P.M. daily Monday through Friday, 8:30 A.M.-1:00 P.M. on Saturday. Mr. Jack Spears, Executive Secretary. Address all communications to this office.

Officers: Dr. Fred E. Woodson, President; Dr. W. A. Showman, President-Elect; Dr. Marshall O. Hart, Vice-President; Dr. John G. Matt, Secretary-Treasurer. Trustees: Dr. Maurice J. Searle, Dr. Homer A. Ruprecht, Dr. Robert E. Funk, Dr. John E. McDonald, and Dr. Hugh C. Graham. Board of Censors: Dr. Thomas J. Hardman, Chairman, Dr. J. D. Shipp, and Dr. Thomas H. Davis.

Medical Library: 1203 Medical Arts Building, Tulsa. Telephone 4-1461. Hours 9:00 A.M.-5:00 P.M. daily Monday through Friday, closed 1:00-2:00 P.M. daily; Saturday, 9:00 A.M.-1:00 P.M.; Tuesday evenings, 6:00-9:00 P.M. Miss Irma A. Beehler, Librarian. Dr. John G. Matt, Chairman, Medical Library Committee.

Medical Credit Bureau: 1201 Medical Arts Building, Tulsa. Telephone 3-6331. Hours 8:30 A.M.-5:00 P.M. daily Monday through Friday, 8:30 A.M.-1:00 P.M. Saturday. Mrs. Zelma Fink, Manager. Mrs. Okla Pottier, Miss Joyce Bradley, clerks. Dr. Paul Grosshart, Chairman, Medical Credit Bureau Committee.

The Bulletin: Address all communications concerning The Bulletin to Mr. Jack Spears, Managing Editor, Tulsa County Medical Society, 1202 Medical Arts Building, Tulsa 3, Oklahoma. Advertising rates upon request. Dr. Ralph F. Martin, Editor.

OKLAHOMA STATE MEDICAL ASSOCIATION

Executive Offices: 210 Plaza Court, Oklahoma City, Oklahoma. Telephone 7-0976. Mr. R. H. Graham, Executive Secretary. Mr. John K. Hart, Associate Executive Secretary. Mrs. Jean Baugh, Public Relations Director. Officers: Dr. Ralph A. McGill, Tulsa, President; Dr. Lewis J. Moorman, Oklahoma City, Secretary-Treasurer. Dr. James Stevenson, Tulsa, and Dr. John F. Burton, Oklahoma City, Delegates to the American Medical Association.

The Journal: 210 Plaza Court, Oklahoma City. Dr. Lewis J. Moorman, Oklahoma City, Editor-in-Chief. Miss Mary Lou Crahan, Editorial Assistant.

Postgraduate Study Committee: 212 Plaza Court, Oklahoma City. Dr. Harry A. Daniels, Oklahoma City, Chairman. Mrs. Orene Ramsey, Secretary.

AMERICAN MEDICAL ASSOCIATION

Executive Offices: 535 North Dearborn, Chicago, Illinois. Dr. George F. Lull, General Manager. Address all communications, including subscription to AMA publications to this office. **Washington Office:** 1523 L Street, N.W., Washington, D. C. Dr. J. S. Lawrence, Director. **National Education Campaign:** Whitaker & Baxter, One North LaSalle Street, Chicago, Illinois.

TULSA COUNTY HOSPITALS

Byrne Memorial Hospital. 1321 S. Peoria, Tulsa. Telephone 2-4114. Mrs. Bessie Byrne, Owner and Manager.

Flower Hospital. 523 N. Boulder, Tulsa. Telephone 2-2208. Mrs. K. K. Eason, Owner and Manager.

Franklin Hospital. Broken Arrow, Oklahoma. Dr. Onis Franklin, Medical Director.

Hillcrest Lying-In Hospital. 1615 East 12th Street, Tulsa. Telephone 2-8134. Mr. Bryce L. Twitty, Administrator. Dr. Logan A. Spann, Chief of Staff.

Hillcrest Memorial Hospital. 1653 East 12th Street, Tulsa. Telephone 3-2131. Mr. Bryce L. Twitty, Administrator. Dr. Logan A. Spann, Chief of Staff.

Medical & Surgical Hospital. 1307 South Main, Tulsa. Telephone 3-0151. Dr. L. C. Northrup, Medical Director.

Mercy Hospital. 807 South Elgin, Tulsa. Telephone 5-3123. Dr. Wade Sisler, Medical Director.

Junior League Convalescent Hospital. 4900 South Lewis Road, Tulsa. Telephone 7-3311. Mrs. Lee Mulhall, Supervisor. Dr. James W. White, Medical Director.

Moton Memorial Hospital. 603 East Pine, Tulsa. Telephone 4-8430. Mr. T. A. West, Administrator. For colored patients.

St. John's Hospital. 1923 South Utica, Tulsa. Telephone 7-3361. Sister M. Agatha, Administrator. Dr. Thomas J. Hardman, Chief of Staff.

MEDICAL ORGANIZATIONS

City Health Department. 521 North Boulder, Tulsa. Telephone 4-2138. Dr. T. Paul Haney, Superintendent.

City Schools Health Department. 1514 South Quaker, Tulsa. Telephone 4-9642. Dr. Marcella R. Steel, Superintendent.

Group Hospital Service of Oklahoma. 315 South Denver, Tulsa. Telephone 2-6264. Mr. N. D. Helland, Executive Director. Mr. Ralph Bethel, General Manager.

Medical & Dental Arts Building. 106 West 6th Street, Tulsa. Telephone 4-4709. Mr. Thomas A. Hunt, Manager.

Medical License Registrar. Mr. Andy Stokes, County Clerk, Tulsa County Courthouse, 6th & Boulder streets, Tulsa. Telephone 3-2321.

Oklahoma Division, American Cancer Society. Commerce Exchange Building, Oklahoma City, Oklahoma. Dr. J. R. B. Branch, Executive Director.

Oklahoma Medical Research Foundation. Commerce Exchange Building, Oklahoma City, Oklahoma. Mr. Hugh Payne, General Manager.

Oklahoma County Medical Society. 512 Medical Arts Building, Oklahoma City, Oklahoma. Telephone 3-7143. Mrs. Muriel R. Waller, Executive Secretary.

Oklahoma Physicians Service. 315 South Denver, Tulsa. Mr. N. D. Helland, Executive Director. Telephone 2-6264.

Oklahoma State Board of Medical Examiners. 813 Branniff Building, Oklahoma City, Oklahoma. Mr. B. E. Harkey, Attorney. Dr. Clinton Gallaher, Shawnee, Secretary. Address all communications to the Oklahoma City office.

Oklahoma State Department of Health. 3400 North Eastern, Oklahoma City. Dr. Grady F. Mathews, Commissioner.

St. John's Tumor Clinic. 1923 South Utica, Tulsa. Telephone 7-6130. Miss Lois Taylor, Secretary. Dr. Ralph A. McGill, Medical Director.

Tulsa Chamber of Commerce. Tulsa Building, Tulsa. Telephone 5-1201. Mr. Russell S. Rhodes, General Manager; Mr. Booth Moffett, Secretary, Public Health Committee; Mr. John Marshall, Secretary, Conventions Department.

Tulsa Council of Social Agencies. 602 South Cheyenne, Tulsa. Telephone 3-7171. Mr. Leonard Swoverland, Executive Secretary.

Tulsa Child Guidance Clinic. 602 South Cheyenne, Tulsa. Telephone 5-9676. Dr. P. Richard Appfel, Medical Director.

Tulsa County Public Health Association. 807 South Peoria, Tulsa. Telephone 5-3238. Mrs. Odessa Winters, Executive Director.

Tulsa County Heart Association. 807 South Peoria, Tulsa. Telephone 5-3238.

Tulsa County Cancer Society. 412 Tri-State Insurance Building, Tulsa. Telephone 5-5501. Dr. John E. McDonald, President.

Tulsa County Cooperative Clinic. 521 North Boulder, Tulsa. Telephone 4-6672. Dr. David V. Hudson, Medical Director. For treatment of venereal diseases.

Tulsa County Medical Clinic. 212 West 6th Street, Tulsa. Telephone 3-2437. Dr. J. Jeffrey Billington, Medical Director. For treatment of indigent sick.

Tulsa County Red Cross Blood Center. 602 South Cheyenne, Tulsa. Telephone 5-3281. Dr. Mabel M. Hart, Medical Director.

KEY TO SYMBOLS

For purposes of information physicians who practice a major specialty are so indicated in the foregoing roster. The symbol following the name indicates the specialty practiced. However, this listing does not necessarily mean that the physician named limits himself strictly to that specialty.

All—Allergy
Anes—Anesthesia
C & L—Chest and Lungs
Derm—Dermatology
EENT—Eye, Ear, Nose and Throat
Gyn—Gynecology

I—Internal Medicine
Ind—Industrial Medicine
NP—Neuropsychiatry
NS—Neuro-Surgery
Ob—Obstetrics
Oph—Ophthalmology
Orth—Orthopedics
Oto—Otolaryngology

P—Psychiatry
PH—Public Health
Path—Pathology
Ped—Pediatrics
Proc—Proctology
R—Radiology
S—Surgery
U—Urology



Our Experienced Personnel

INVITES YOU TO VISIT
OUR NEW

Modern and Streamlined Shop

- Three Lobby Entrances
- Sixth Street Entrance
- Boulder Street Entrance
- Completely Air-Conditioned
- Spacious Waiting Room
- Friendly Service

MEDICAL ARTS PRESCRIPTION SHOP

Medical And Dental Arts Bldg.

O. L. PRATHER, MANAGER

PHONE 4-0121

TULSA

D. L. KINCAID
(Kinney)

RAYMOND EWERS

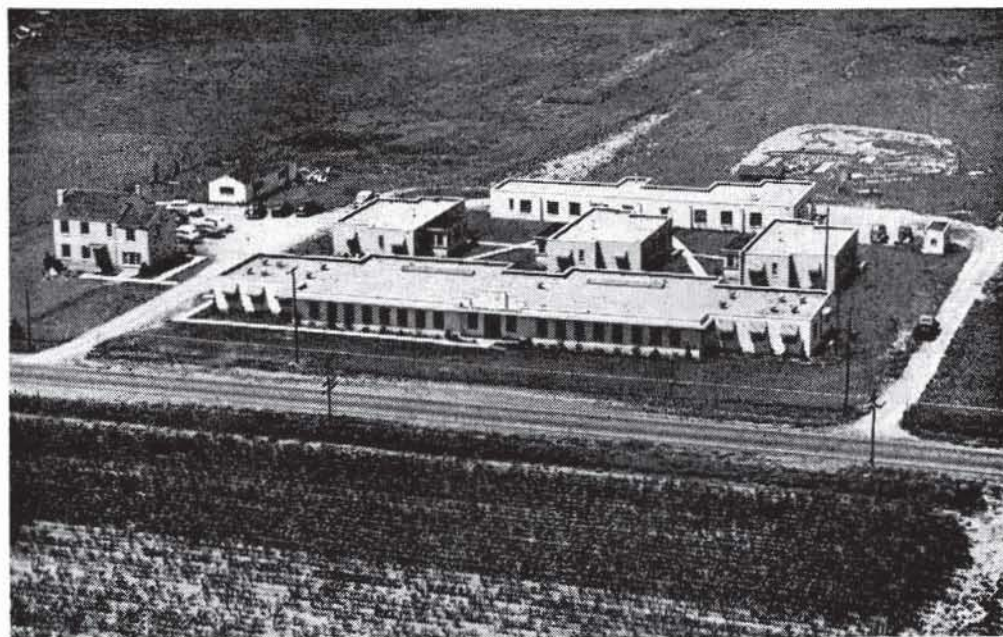
Professional **DRUG SHOP**

An Ethical Prescription Pharmacy

2110 South Utica

Telephone 3-8169

City Wide Delivery Service
Two Miles Closer to Southeast Tulsa



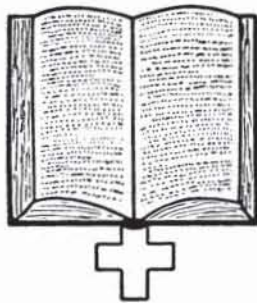
RESEARCH FOUNDATION SANITARIUM

NORTHEAST TWENTY-THIRD STREET AND SPENCER ROAD

Coyne H. Campbell, M.D., F.A.C.P., F.A.P.A., Medical Supt.

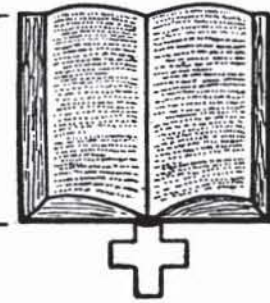
Route 4, Box 65

Oklahoma City, Okla.



THE MEDICAL LIBRARY

Library of the Tulsa County
Medical Society



Medical Library Committee:

John G. Matt, M.D., Chairman

Morris B. Lhevine, M.D.

David V. Hudson, M.D.

Felix R. Park, M.D.

Robert E. Funk, M.D.

Miss Irma A. Beehler, *Librarian*

Telephone 4-1461

GIFTS OF THE MONTH—:

Dr. I. H. Nelson. Karsner, Howard T., M.D., and Sanford, Arthur H., M.D., 1949 Year Book of Pathology and Clinical Pathology. 543 pp. The Year Book Publishers, Inc., Chicago, Ill., 1950.

Dr. Fred E. Woodson. Aureomycin, A Review of the Clinical Literature. Lederle Laboratories, New York, N. Y., 1950.

Oklahoma State Medical Association. Becker, Robert M., M.D., Abstract of Lectures in Internal Medicine. 240 pp. Committee on Postgraduate Medical Teaching, 1950.

Dr. Robert E. Funk. Mote, John R., M.D., (ed.) Proceedings of the First Clinical ACTH Conference. Chicago, October 21-22, 1949. 607 pp., charts. Blakiston Company, Philadelphia, Pa., 1950.

The Tulsa City-County Health Department Library has loaned for an indefinite period the following books:

Blackfan, K. D., M.D., and Diamond, L. K., M.D., Atlas of the Blood in Children. 320 pp., 70 plates. The Commonwealth Fund, New York, N. Y., 1944.

Papanicolaou, G. N., M.D., and Traut, Herbert F., M.D. Diagnosis of the Uterine Cancer by Vaginal Smear. 44 pp., 11 plates. The Commonwealth Fund, New York, N. Y., 1944.

Papanicolaou, G. N., M.D., Traut, Herbert F., M.D., and Marchetti, A. A., M.D. Epithelia of Woman's Reproductive Organs. 48 pp., 28 plates. The Commonwealth Fund, New York, N. Y., 1948.

RECENT ACQUISITIONS—:

Bockus, Henry L., M.D. Postgraduate Gastroenterology. 679 pp., 258 ill. W. B. Saunders Co., Philadelphia, Pa., 1950.

Cole, Warren H., M.D. (ed.) Operative Technic In Specialty Surgery. 724 pp. 394 ill. Appleton-Century-Crofts Co., New York, N. Y., 1949.

Conn, Howard F., M.D., (ed.) 1950 Current Therapy. 736 pp. W. B. Saunders Co., Philadelphia, Pa., 1950.

Meakins, Jonathan C., M.D. Practice of Medicine. Fifth Edition, 1500 pp., 500 ill., 50 color plates. C. V. Mosby Co., St. Louis, Mo., 1950.

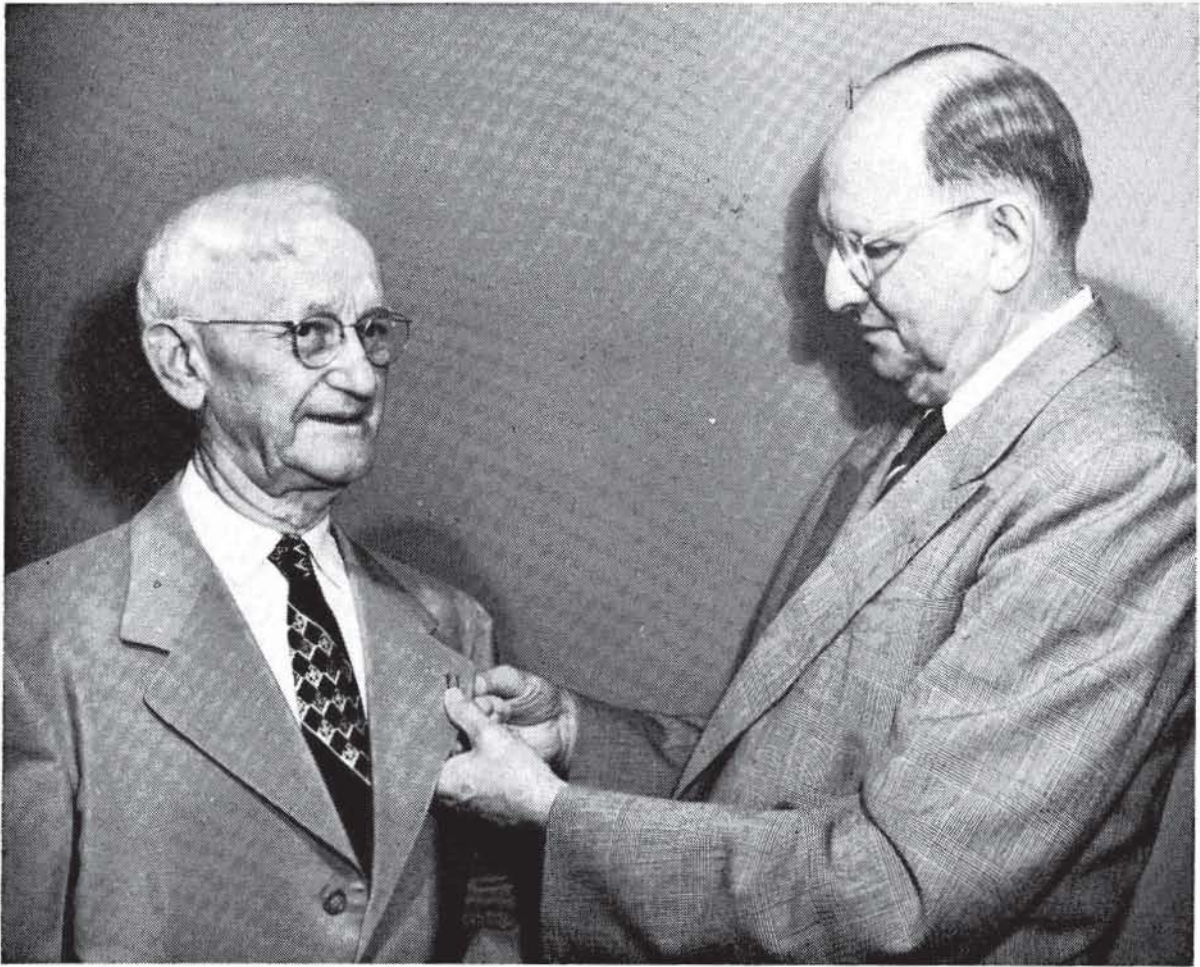
Snapper, I., M.D. Medical Clinics on Bone Disease, A Text and Atlas. Second Edition, 679 pp., 258 ill. Interscience Publishers, Inc., New York, N. Y., 1949.

Thorne, George W., M.D. Adrenal Insufficiency. 171 pp., charts and bibliography. Charles C. Thomas, Publisher, Springfield, Ill., 1949.

Vaughn and Black. Practice of Allergy. Second Edition. 1,092 pp., 310 ill. C. V. Mosby Company, St. Louis, Mo., 1950.

RECENT PUBLICATIONS BY MEMBERS OF THE TULSA COUNTY MEDICAL SOCIETY—:

Dr. Maxwell A. Johnson and Dr. Charles Huggins. Cancer of the Bladder and Prostate. Journal of the American Medical Association, v. 135:1146, 1947; has been abstracted and appears in Zentralorgan fur die Gesamtechirurgie und ihre Grenzgebiete, December, 1949, p. 433.



Dr. H. Lee Farris, veteran Tulsa surgeon, left, is seen above as he receives a 50-Year Pin from Dr. Ralph A. McGill, Tulsa, President of the Oklahoma State Medical Association.

JAMES L. MINER, M.D.
1881-1950

Dr. James LaSalle Miner, 68, dean of Tulsa obstetricians, died at a Tulsa hospital Sunday, June 4, 1950, after a long illness.

Born in Vermont, Dr. Miner received his medical degree at the University of Vermont College of Medicine in 1905. He practiced in the East until 1912 when he established his practice at Big Heart, Oklahoma. Later he was to practice at Beggs, Oklahoma, and since 1927 at Tulsa as a specialist in obstetrics and gynecology. In ill health for two years, Dr. Miner retired from practice last October. He was elected an honorary member of the Tulsa County Medical Society in January and his name was included on a list of physicians named to life membership in the Oklahoma State Medical Association the same day of his death.

TULSA SURGEON COMPLETES FIFTY YEARS OF PRACTICE

Dr. H. Lee Farris, veteran Tulsa surgeon, was presented with a gold emblem commemorating the completion of fifty years of active practice at the Tulsa County Medical Society meeting of Monday, May 22, 1950. The presentation was made by Dr. Ralph A. McGill, president of the Oklahoma State Medical Association. Dr. Farris joins 40 other Oklahoma doctors in the exclusive 50-Year Club whose membership is limited to physicians with more than a half-century of practice.

A graduate of Medico-Chirurgical College of Philadelphia, Class of 1900, Dr. Farris later practiced in Memphis, Tennessee, St. Louis, Missouri, and Paris, Texas, before coming to Tulsa in 1922 as Surgeon-In-Chief of the old Oklahoma Hospital. A member of the American College of Surgeons, he was Medical Director of the huge Douglas Aircraft Manufacturing Plant of Tulsa during World War II.

New Relief in Hay Fever

Antistine-Privine NASAL SOLUTION

A synergistic combination of an Antihistaminic and Vasoconstrictor

ANTISTINE-PRIVINE gives prompt, prolonged relief from allergic nasal congestion.

This new synergistic combination contains the effective antihistaminic, ANTISTINE, to block the congestive action of histamine, and the potent vasoconstrictor, PRIVINE, to shrink the nasal mucosa.

It has been established that "the decongestive action of ANTISTINE-PRIVINE on the allergic nasal mucosa in many instances appears to be

more intense and prolonged than from either solution alone."¹

PRIVINE is still available for use in those conditions where the antihistaminic component is considered unnecessary.

ANTISTINE-PRIVINE, aqueous solution of ANTISTINE hydrochloride 0.5%, and PRIVINE hydrochloride, 0.025%, in bottles of 1 fl. oz. with dropper.

DOSAGE: 2 to 3 drops in each nostril 3 or 4 times daily.

PRIVINE hydrochloride, 0.05% solution in 1 pint and 1 oz. dropper bottles for prescription; 0.1% solution reserved for office procedures, in 1 pint bottles only.

1. Friedlaender & Friedlaender: Amer. Pract. 2:643, June, 1948.

Ciba PHARMACEUTICAL PRODUCTS, INC., SUMMIT, NEW JERSEY

ANTISTINE® (brand of antazoline); PRIVINE® (brand of naphazoline) 2/1561M

DR. MCGILL TAKES OFFICE*(Continued From Page 7)*

annual meetings, providing such meetings were not held in hotels, and providing that such colored physicians have the endorsement of the county medical society in the county in which they reside.

(5) Directed support of proposed legislative action to give the Oklahoma State Board of Medical Examiners the direct power of injunction against alleged violators of medical licensure and practice acts of the State. This is expected to per-

mit legal action against medical quacks in counties where county attorneys refuse to act.

(6) Urged the coming session of the Oklahoma State Legislature to increase the facilities of the University of Oklahoma School of Medicine to permit the graduation annually of 125 students.

(7) Directed continuation of the valuable Public Policy Committee's annual program of public relations.

(8) Called for revisions in the State Association's Constitution & By-Laws to permit a revamping of committee structure, elimination of dead and inactive groups, and creation of other needed committees.

(9) Set up a mechanism to assist in adjudication of alleged abuses by physicians in the operation of the Blue Cross and Blue Shield plans of Oklahoma.

(10) Authorized the payment of expenses of the President of the Association when on official business, thereby terminating the necessity for the President to expend from \$2,500 to \$5,000 of his own funds in travel and other expenses. This action will also encourage many capable prospective candidates who might not otherwise seek the office because of the financial considerations involved.

Dr. P. P. Nesbitt of Tulsa, a former President of the Association, was one of three members named to Honorary Membership. Life Membership was conferred upon Dr. J. E. Wallace and Dr. James L. Miner of Tulsa. Word of the death of Dr. Miner was received the same day the action was taken.

**DICK KELLO**

Offers

Prompt Motor Delivery
Of Your Prescriptions

Telephone 6-2156

BALL DRUG STORE

College at Admiral

SPECIAL PURPOSE FOODS**LOW-SODIUM FOODS****LOW-CALORIE FOODS****DIABETIC FOODS**

Phone 5-7711

Akin's

718 S. Boulder



JAMES SHADDOCK

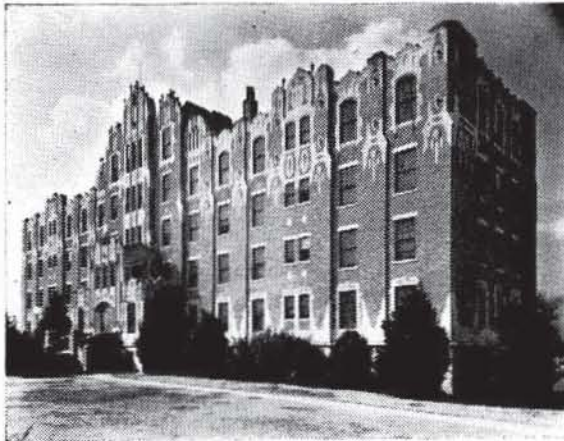


DEANE RALEY

Ethical Prescriptionists

FIFTEENTH AT QUAKER

Telephone 4-3133



*One of Oklahoma's
finer hospitals*

1653 East Twelfth St.

Telephone 3-2131

TULSA, OKLAHOMA

HILLCREST
MEMORIAL HOSPITAL

*Clinical Background
is the Prescriber's
BEST Safeguard*



TRI-CALSATE

has been successfully used in the peptic ulcer syndrome for more than 21 years

1. Tri-Calsate is a safe neutralizer of gastric Hcl and promptly inhibits pepsin activity.
2. Tri-Calsate does not cause acid rebound.
3. Tri-Calsate is palatable without artificial flavoring and can be advantageously prescribed in water or milk.
4. Tri-Calsate is so buffered as to minimize the possibility of alkalosis.
5. There is no evolution of carbon dioxide during the reaction in the stomach, eliminating distress from distention and belching.
6. It does not injure the kidneys.
7. It does not make the gastric contents alkaline.

Available on Rx 4½ oz. and 18 oz. bottles.

Write for trial package and literature.

F. H. PAXTON & SONS, INC.
Manufacturing Pharmaceutical Chemists CHICAGO 11, ILL.
469 E. OHIO ST.

AUXILIARY COMMENDED

Special praise for the Women's Auxiliary to the Tulsa County Medical Society for its work in the 1950 campaign of the Tulsa Chapter of the American Cancer Society was voiced last month by Dr. John E. McDonald, Chapter President.

"We have been successful in raising the sum of \$12,000 in Tulsa County this year. A large measure of the success of the drive is due to the members of the Auxiliary who contributed so freely of their time and effort. It is very sincerely appreciated," Dr. McDonald said. The Chapter officer also praised Mr. John Athens, Drive Chairman, for his leadership in the campaign.

DR. CHARBONNET HONORED

Dr. P. N. Charbonnet, veteran Tulsa obstetrician who retired from active practice last year due to illness, was elected an honorary member of the Tulsa County Medical Society at the regular meeting of Monday, May 22, 1950. He is now residing in Pensacola, Florida.

A graduate of Tulane University School of Medicine, Class of 1916, Dr. Charbonnet served in World War I as a medical officer. Since 1920 he had practiced in Tulsa, specializing in obstetrics and gynecology.

FOR RENT: Office space in Court Arcade Building, Tulsa. Desirable space. Nominal Rent. Telephone 3-2664.

DUES INSTALLMENT DUE

Members of the Tulsa County Medical Society are reminded that the final semi-annual installment of \$50.00 for annual membership dues is now due and payable. Checks should be made payable to the Tulsa County Medical Society and mailed to 1202 Medical Arts Building, Tulsa 3, Oklahoma.

DR. PAUL O. SHACKELFORD has moved his practice to Oklahoma City where he will be associated with the Lain-Lamb Clinic in the practice of dermatology.

DR. CHARLES A. HULSE has removed his practice to Dallas, Texas.

PROMPT RELIEF for the "Sneezin' Season" . . .



ORAL anti-histaminic treatment of hay fever and other common allergic manifestations is now accepted practice. In a recent study¹, the Pyra-Maleate formula (pyranisamine maleate) provided prompt symptomatic relief in the following percent of cases:

hay fever—69.8%, vasomotor rhinitis—59.1%, acute urticaria—100%, pruritus—100%, angioneurotic edema—100%, and contact dermatitis—100%. Relatively few and only mild side effects were experienced.

●
DOSAGE—the recommended average adult dose is one 50 mg. tablet 3-4 times daily; children one-half as much.

SUPPLIED—in 25 mg. and 50 mg. tablets in bottles of 30, 100 and 1,000.

VANPELT & BROWN, INC., Richmond, Va.

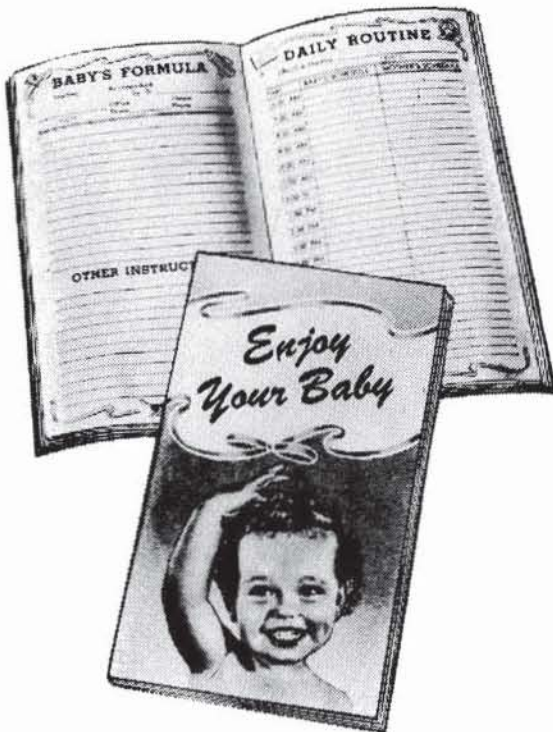
¹*Annals of Allergy*, 5:770:49



PYRA-MALEATE

(Brand of Pyranisamine Maleate)

A BIG TIME-SAVER FOR EVERY DOCTOR



This handy booklet for new mothers was "built to doctors' orders". It contains blank forms for filling in your instructions and formulas.

It provides a permanent case-history record. A memo will bring you a sample...or as many as you want for your daily practice... without obligation.

Many doctors are prescribing "Daricraft Homogenized Evaporated Milk". It is always uniform, safe, sterilized, easy to digest, and high in food value and minerals. Daricraft contains 400 U. S. P. units of Vitamin D per pint.



PRODUCERS CREAMERY CO., SPRINGFIELD, MO.

HARVARD DRUG STORE

B. C. SHINN, Owner

PHONE 6-2186

*The
Suburban
Prescription
Store*

FREE
PRESCRIPTION
DELIVERY

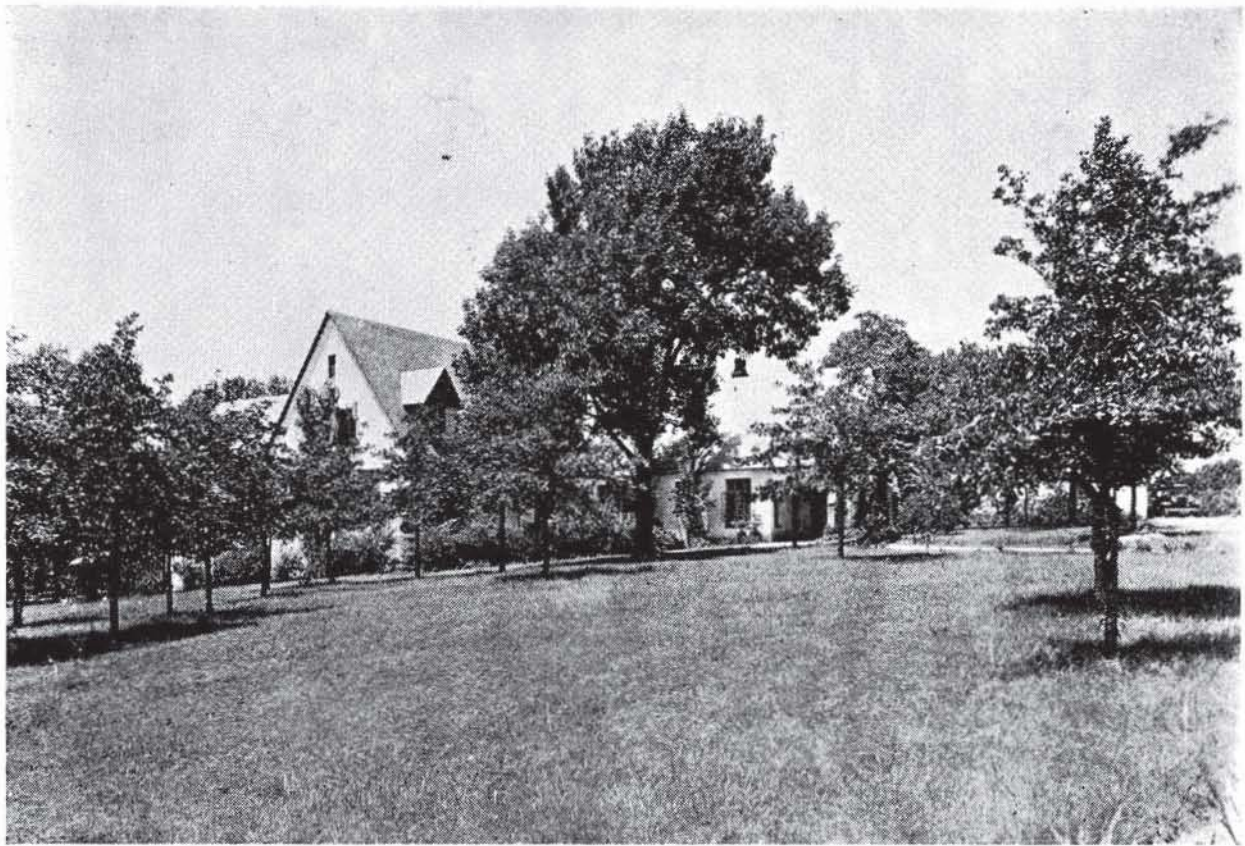
3244 E. 11th St.
Tulsa

ST. JOHN'S HOSPITAL

*A Leading
Institution
In
Oklahoma
Medicine*

1923 SOUTH UTICA
TULSA, OKLAHOMA

TELEPHONE
6-2161



For Convalescent Children

This hospital provides convalescent care to children ages 2-15. Graduate nurses in attendance 24 hours, modern physical therapy department and registered physical therapist, registered occupational therapist, supervised dietetics. Public school instruction under Tulsa Board of Education. Consulting Medical Staff. Contact Medical Director, Dr. James White, telephone 7-3311. Your inspection invited. Approved by Crippled Children's Commission, National Foundation For Infantile Paralysis, private insurance companies.

JUNIOR LEAGUE

CONVALESCENT HOSPITAL FOR CHILDREN

4900 South Lewis Road

Telephone 7-3311

MEDICAL SERVICE SOCIETY OF AMERICA

Membership Roster, Tulsa Chapter

<i>Name:</i>	<i>Representing:</i>	<i>Telephone:</i>
William A. Cates	E. R. Squibb Co.	7-1267
C. R. Doran	Lakeside	Claremore
Carl Gibson	William S. Merrill Co.	4-0956
R. C. Gooch	Abbott Laboratories	9-4389
J. L. Hedges	Massengill	6-8538
A. L. Kessler	Pitman-Moore	7-4974
Dave Lankford	Lederle	-----
Kyle Lloyd	Wyeth, Inc.	5-1882
Joe Loudenback	Flint-Eaton	7-1418
Ralph L. Miller	Hoffman-LaRoche	6-2928
R. Wayne Morrow	Bauer & Black	2-0598
J. D. Nance	E. R. Squibb Co.	5-8575
Dan P. Payne	William S. Merrill Co.	6-5643
Al Poythress	E. R. Squibb Co.	7-9415
Tom Sellers	G. D. Searle	9-7361
Bill Walker	Parke-Davis	4-9261
Preston Walker	Upjohn	7-6464
J. B. Waters	Winthrop-Stearns	9-4045

FLOWER HOSPITAL

523 North Boulder

*Member Hospital, Blue Cross Plan
of Oklahoma*

*Open To All Medical Doctors Who
Are Members in Good Standing of
the Tulsa County Medical Society.*

AT YOUR SERVICE, DOCTOR

In Tulsa you can call a
**PUBLIC HEALTH ASSOCIATION
VISITING NURSE**

by dialing

5-3238

For only \$2.50 a visit, a graduate nurse will go to your patient's home . . . give an injection . . . a bed bath . . . bathe a new baby.

" . . . distribution of the vital food materials found in milk can do much toward improving the standard of living of the masses and help conserve the world's greatest natural resource, which is its people."

*W. E. Krauss, Ph.D., Associate Director
Ohio Experiment Station*

DAIRY COUNCIL OF TULSA

A non-profit health education organization supported by the local dairy industry promoting health and human welfare for the city of Tulsa.

ESTHER M. MUSIL, *Nutritionist*
312 Wright Building
Telephone 4-8280

Affiliated with
National Dairy Council

Professional Directory

VICTOR K. ALLEN, M. D., F.A.C.S.
Diplomate American Board of Surgery
Diseases of the Rectum
1001 Medical Arts Bldg. Tulsa

S. Y. ANDELMAN, M.D.
Diagnosis & Treatment of
Arthritis & Rheumatic Diseases
1611 South Boston Ph. 2-3885

ROBERT L. ANDERSON, M.D.
Thoracic Surgery, Bronchoscopy,
and Esophagoscopy
807 Medical Arts Bldg. Tulsa

B. H. BLOCKSOM, M. D., F.A.C.S.
Diplomate, Boards of Surgery, Urology
Practice Limited to Urology
901 Medical Arts Bldg. Ph. 54-1888

MANUEL BROWN, M. D.
Allergic Diseases
1619 E. 15th Street Ph. 54-5552

HOWARD M. COHENOUR, M.D.
Urology
902 Medical Arts Bldg. Ph. 5-8467

PAUL E. CRAIG, M.D.
General Surgery
411 Daniels Bldg. Ph. 4-9674

SAMUEL E. FRANKLIN, M. D.
General Surgery
1619 E. 15th Street Ph. 3-2109

ROBERT E. FUNK, M.D.
Practice Limited to Internal Medicine
212 Medical Arts Bldg. Tulsa

N. C. GADDIS, M.D.
Diagnosis & Internal Medicine
Special Attention to Lung Diseases
1530 South Peoria St. Tulsa

C. E. GILLILAND, M.D.
Practice Limited to Internal Medicine
Gastroenterology
Suite 210 Court Arcade Bldg.
Tulsa, Oklahoma

HARRY GREEN, M.D.
Diseases of the Skin
X-Ray & Radium Therapy
311 Medical Arts Bldg. Ph. 4-7585

JAMES W. KELLEY, M.D.
Plastic and Reconstructive Surgery
206 Philtower Bldg. Tulsa

A. T. KORNBLEE, M.D.
Practice Limited To Skin Diseases
Diplomate, American Board of
Dermatology & Syphilology
916 Medical Arts Bldg. Tulsa

WALTER S. LARRABEE, M.D.
DELMAS B. JONES, M.D.
X-Ray Diagnosis & Therapy
Radium Therapy
411 Medical Arts Bldg. Ph. 4-3111

E. N. LUBIN, M.D.
Diplomate, American Board of Urology
Genito-Urinary Diseases
1106 Medical Arts Bldg.
Office Ph. 3-6008 Res. Ph. 7-4388

JAMES D. MARKLAND, M.D.
Allergy
411 Medical Arts Bldg. Ph. 4-3111

RALPH A. MCGILL, M.D., F.A.C.S.
Surgery-Radium
1010 Medical Arts Bldg. Ph. 4-4215

Professional Directory

<p style="text-align: center;">EDWARD L. MOORE, M.D., F.A.C.S. Surgery Only 215 Braniff Bldg. Ph. 3-4789 Res. Ph. 7-1623</p>	<p>THE ORTHOPEDIC CLINIC 619 South Main Street Tulsa Practice Limited To Bone & Joint Surgery JOHN E. McDONALD, M.D. FRANK A. STUART, M.D. JOHN C. DAGUE, M.D.</p>
<p style="text-align: center;">IRON H. NELSON, M.D. Clinical and Surgical Pathology 1107 Medical Arts Bldg. Tulsa</p>	
<p style="text-align: center;">MARQUE O. NELSON, M. D. Practice Limited to Dermatology Radium and X-Ray Therapy 510 Medical Arts Bldg. Tulsa</p>	
<p style="text-align: center;">L. C. NORTHRUP, M.D., F.I.C.S. Gynecology & Obstetrics 1307 S. Main Ph. 3-0151</p>	
<p style="text-align: center;">HERBERT S. ORR, M.D. Surgery and Obstetrics 1307 S. Main Ph. 4-2658 Car Phone ZF8-2724</p>	
<p style="text-align: center;">R. C. PIGFORD, M.D., F.A.C.P. American Board of Internal Medicine Cardiovascular Diseases 203 Court Arcade Bldg. Ph. 3-8860</p>	
<p style="text-align: center;">SIMON POLLACK, M.D., D.A.B.R. Diagnostic and Therapeutic Radiology 316 Braniff Bldg. Ph. 2-7517</p>	

SPRINGER CLINIC

604 South Cincinnati

Tulsa

Telephone 5-6621

Medicine

D. O. Smith, M.D.
E. G. Hyatt, M.D.
H. A. Ruprecht, M.D.
Albert W. Wallace, M.D.
Vincel Sundgren, M.D.
Dean C. Walker, M.D.

Neurology and Psychiatry

Tom R. Turner, M.D.
Joe E. Tyler, M.D.

Neurosurgery

Averill Stowell, M.D.
Robert A. Hayne, M.D.

Pediatrics

G. R. Russell, M.D.

General Surgery

Carl J. Hotz, M.D.
William Pratt, M.D.

Urology

K. F. Swanson, M.D.
Charles A. Hulse, M.D.

Ear, Nose and Throat

Donald L. Mishler, M.D.

Orthopedic Surgery

Charles E. Brighton, M.D.

Ophthalmology

Otis S. Lee, M.D.

Anesthesia

M. R. Steel, M.D.

Professional Directory

<p>J. L. RICHARDSON, M.D. Orthopedic & Traumatic Surgery 19 West 10th St. Tulsa</p>	<p>CHARLES G. STUARD, M.D. Ophthalmology 221 Court Arcade Bldg. Ph. 4-3435</p>
<p>HERSCHEL J. RUBIN, M.D. Diseases of Infants & Children 1619 East 15th St. Tulsa</p>	<p>LEON H. STUART, M.D., F.A.C.R. X-Ray Diagnosis 1107 Medical Arts Bldg. Tulsa</p>
<p>PHILIP M. SCHRECK, M.D. Internal Medicine 201-202 Medical Arts Bldg. Tulsa</p>	<p>JAMES B. THOMPSON, M. D. General Surgeon Diplomate, American Board of Surgery 1001 Medical Arts Bldg. Ph. 3-3318</p>
<p>MAURICE J. SEARLE, M.D. Pediatrics Diplomate, American Board of Pediatrics 512 Medical Arts Bldg. Tulsa</p>	<p>DRS. TRAINOR & FIRST Cardiology & Electrocardiology W. J. TRAINOR, M.D. SAFETY R. FIRST, M.D. 1011 Medical Arts Bldg. Ph. 5-7545</p>
<p>J. D. SHIPP, M.D. Surgery and Diseases of the Colon and Rectum 316 Medical Arts Bldg. Tulsa</p>	<p>WILLIAM RAY TURNBOW, M.D. Diagnostic & Therapeutic Blocks 2112 W. 41st St. Ph. 5-0653</p>
<p>W. A. SHOWMAN, M.D. Dermatology 408 Medical Arts Bldg. Ph. 3-7789</p>	<p>ARNOLD H. UNGERMAN, M.D. MILFORD S. UNGERMAN, M.D. Diagnosis & Treatment of Nervous and Mental Diseases 708 Medical Arts Bldg. Ph. 2-3151</p>
<p>F. D. SINCLAIR, M.D., F.A.C.S. Certified American Board of Obstetrics & Gynecology 307 Medical Arts Bldg. Ph. 5-5337</p>	<p>R. M. WADSWORTH, M.D. Pediatrics 1445 S. Quaker Ph. 3-4300</p>
<p>WADE SISLER, M.D. Orthopedic Surgery 8th & Elgin Ph. 5-3123</p>	<p>J. E. WALLACE, M.D. Gynecology 914 Medical Arts Bldg. Ph. 2-6501</p>



For
RADIANT HEALTH
BUOYANT ENERGY
SOUND BONES
BEAUTIFUL TEETH

We Recommend

Homogenized
'VITAMIN D' MILK

Fortified With 400 U.S.P. Units

Vitamin D Per Quart, By Vitex Process

Beatrice Foods Co.

215 North Denver

Telephone 4-2471

PROFESSIONAL TRADITION

In compounding a prescription, as in all professional work, experience is an important, even priceless, ingredient.

Be Certain with Curtains

CURTAINS PRESCRIPTION LABORATORY

SIXTH AND BOULDER

PHONE 4-7116

Across the Street North From Medical Arts Bldg.

Sec. 34.66 P. L. & R.

U. S. POSTAGE

PAID

TULSA 3, OKLA.

PERMIT No. 13

(Return Postage Guaranteed)

COURTRIGHT IN THE COURT ARCADE

Tulsa's only "*Ophthalmic - Dispenser*" - - - manufacturing and fitting eye-glasses exclusively for patients of the Eye-Physician (M. D.) - - - visit our complete and modernlv equipped laboratorv.

Res. Phone 6-1289

25 YEARS EXPERIENCE

Office Phone 4-1613

MERKEL X-RAY CO.

Exclusive Distributors For—

Westinghouse X-Ray Equipment

Physical Therapy Equipment



**Complete Stock
X-Ray and Physical Therapy
Supplies**



TULSA

1114 S. Boulder

Tel. 2-4897

OKLAHOMA CITY

1130 N. Hudson

Tel. 2-3522

MID-CONTINENT SURGICAL SUPPLY CO.

**Hospital and Physicians
Equipment and Supplies
X-Ray Equipment**

*The Complete
Surgical Supply Store*

We carry a complete stock of instruments, rubber goods, surgical dressings, sutures, laboratory stains or reagents, enamel-ware, examining room furniture, wheel chairs, supports and trusses.

PHONE 2-8169

TULSA

610 SOUTH BOSTON

Commercial Printing Company **PRINTERS**

We Print the Bulletin

OFFICE AND PLANT AT 417 EAST 3RD STREET

R. W. (Bob) HUDSON

Publications, Programs
Advertising Literature,
Office and Factory Forms
Fine Personal Stationery

TELEPHONE 2-2450