

NOV 28 1950

TULSA COUNTY

MEDICAL SOCIETY



# THE BULLETIN

*of the Tulsa County Medical Society*

*Build Tulsa*



## **IN THIS ISSUE**



Annual Election of Officers  
Scheduled For December 11th



The Medical Library



Oklahoma Medical Research  
Foundation Opens Building



1951 Convention Notes

  
**SEASON'S  
GREETINGS**  


December, 1950

Vol. 16

No. 12

New!

# FER-IN-SOL

For the prevention and treatment  
of iron deficiency anemia

FER-IN-SOL is a concentrated solution of ferrous sulfate, to be used in drop dosage for prevention and treatment of iron deficiency anemia.

Ferrous sulfate in an acidulous vehicle is widely accepted as the most effective form of iron for administration to persons of all ages.

Because of its pleasant citrous flavor, Fer-In-Sol is taken willingly by infants and children. It blends perfectly with citrus fruit juices and leaves minimum aftertaste.

The Fer-In-Sol dropper is conveniently calibrated for doses of 0.3 and 0.6 cc. (7.5 mg. and 15 mg. of iron). Only 0.3 cc. is required to provide the Recommended Daily Allowance of iron for infants and young children; 0.6 cc. provides the Recommended Daily Allowance for adults, including pregnant women.

Available in 15 and 50 cc. bottles with appropriately calibrated dropper.



**MEAD JOHNSON & CO.**  
EVANSVILLE 21, IND., U. S. A.

Representative: Louis B. Whitesell, 2425½ West Douglas, Wichita 12, Kansas.



**“The . . . estrogen preferred by us is ‘Premarin,’ a mixture of conjugated estrogens, the principal one of which is estrone sulfate.”**

Hamblen, E. C.: North Carolina M. J. 7:533 (Oct.) 1946.

*Four potencies of “Premarin” permit flexibility of dosage: 2.5 mg., 1.25 mg., 0.625 mg. and 0.3 mg. tablets; also in liquid form, 0.625 mg. in each 4 cc. (1 teaspoonful).*

**“PREMARIN”<sup>®</sup>**

In treating the menopausal syndrome with “Premarin,” Perloff\* reports that “Ninety-five and eight-tenths per cent of patients treated with 3.75 mg. or less daily obtained complete relief of symptoms”; also, “General tonic effects were noteworthy and the greatest percentage of patients who expressed clear-cut preferences for any drug designated ‘Premarin.’”

Thus, the sense of “well-being” usually imparted represents a “plus” in “Premarin” therapy which not only gratifies the patient but is conducive to a highly satisfactory patient-doctor relationship.

\*Perloff, W. H.: Am. J. Obst. & Gynec. 58: 684 (Oct.) 1949.



While sodium estrone sulfate is the principal estrogen in “Premarin”, other equine estrogens . . . estradiol, equilin, equilenin, hippulin . . . are probably also present in varying amounts as water-soluble conjugates.

*Estrogenic Substances (water-soluble) also known as Conjugated Estrogens (equine)*

Ayerst, McKenna & Harrison Limited  
22 East 40th Street, New York 16, N. Y.

5003



D. L. KINCAID  
(Kinney)

RAYMOND EWERS

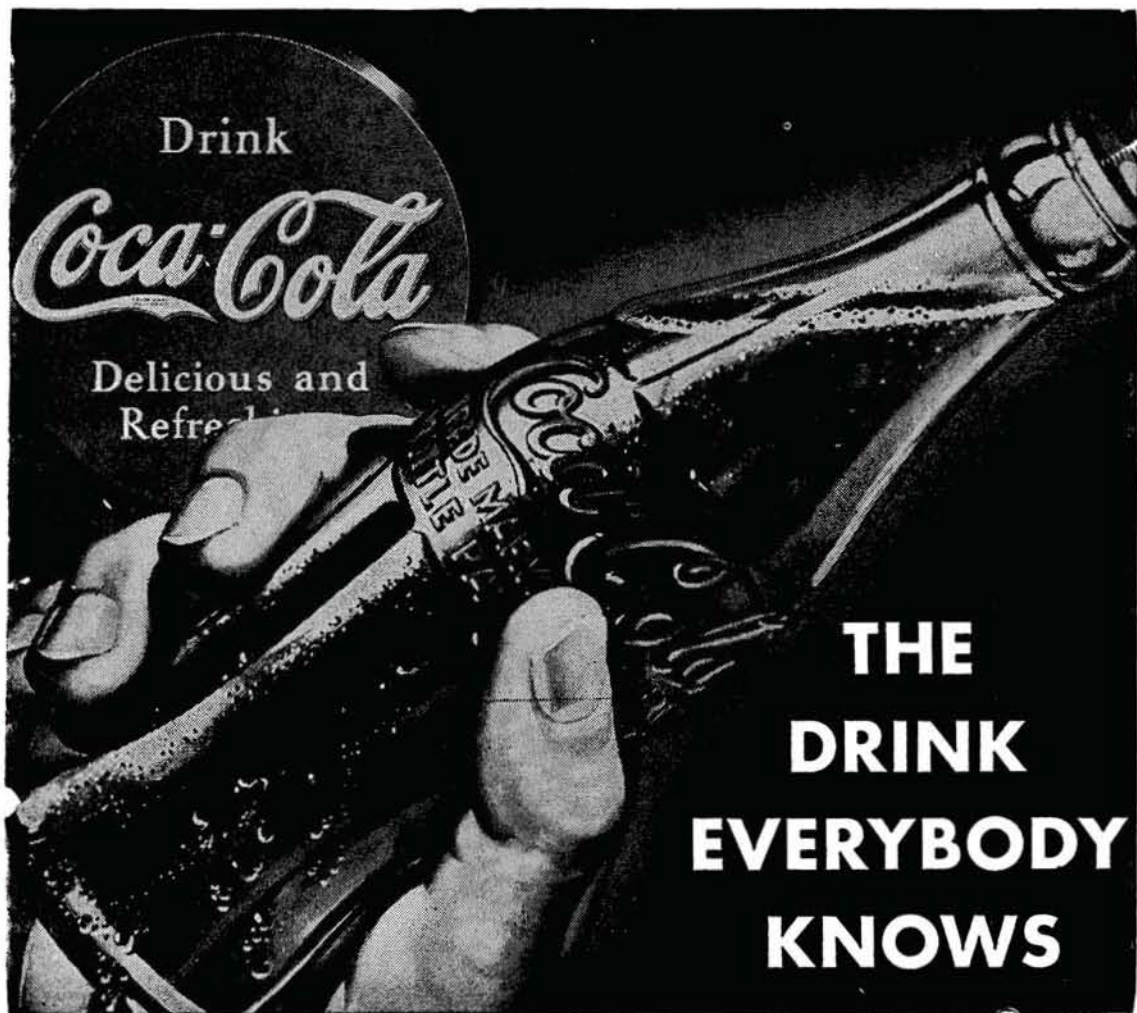
# *Professional* **DRUG SHOP**

**An Ethical Prescription Pharmacy**

**2110 South Utica**

**Telephone 3-8169**

*City Wide Delivery Service*  
*Two Miles Closer to Southeast Tulsa*



# GETMAN'S

ROY R. GETMAN, Founder



*Sixth and Main Sts.  
Phone - 3 6171*

## “MERRY CHRISTMAS”

May we pause for just a moment at this busy time to pay homage to the GREAT HEALER in whose name we celebrate CHRISTMAS.

“A STRONG America is  
a SAFE America”

FREE DELIVERY NIGHT AND DAY.

WE GIVE S & H GREEN STAMPS

Sponsors of the “Tell Me, Doctor” Radio Broadcasts at 5:15 P.M. each Monday through Friday, KTUL, prepared by The Oklahoma State Medical Association.

## CONTENTS

Election of Officers Set .....	7
Research Foundation Opens .....	8
The Medical Library .....	9
President's Page .....	10
Editorials .....	12
December Medical Calendar .....	14
1951 Annual Meeting News .....	17
New Public Health Rules .....	18
Military Notes .....	18
New Members .....	20
New Clinic Building .....	22

## ADVERTISERS

Akin's Natural Foods .....	23
Ayerst, McKenna & Harrison .....	3
Ball Drug Company .....	22
Beatrice Foods, Inc. ....	27
Ciba Pharmaceutical Products .....	13
Commercial Printing Co. ....	28
Courtright-Optician .....	28
Curtain's Prescription Laboratory .....	21
Daricraft .....	20
Dairy Council of Tulsa .....	21
Eli Lilly & Company .....	6
Getman Drug Store .....	5
Harvard Drug Store .....	18
Hillcrest Hospital .....	27
Junior League Home .....	19
Mead Johnson & Company .....	2
Medical Arts Prescription Shop .....	11
Medical Service Society .....	15
Merkel X-Ray Co. ....	28
Mid-Continent Surgical Supply Co. ....	28
Professional Directory .....	23
Professional Drug Shop .....	4
Public Health Association .....	21
Raley-Shaddock Pharmacy .....	16
Scott Robison's Drug Store .....	17
Springer Clinic .....	24
St. John's Hospital .....	22
T. Roy Barnes Drugry .....	15
Tulsa Clinic .....	25

**ELI LILLY AND COMPANY** *announces*

**NPH ILETIN (INSULIN, LILLY)**

*and thereby marks another*

*improvement in diabetes management*

Clinical evidence indicates that single daily injections of NPH Insulin provide an efficiently timed Insulin effect which closely parallels average requirements over a twenty-four-hour period. This new preparation of Insulin eliminates, in most instances, occasion for mixed injections of Insulin and Protamine Zinc Insulin. In severe and complicated cases, supplementary doses of Insulin may be utilized, if indicated.

*Detailed information and literature pertaining to NPH Iletin (Insulin, Lilly) are personally supplied by your Lilly medical service representative or may be obtained by writing to*

**ELI LILLY AND COMPANY** *Indianapolis 6, Indiana, U.S.A.*

# THE BULLETIN

OF THE

## TULSA COUNTY MEDICAL SOCIETY

Fred E. Woodson, M.D., *President*W. A. Showman, M.D., *President-Elect*Marshall O. Hart, M.D., *Vice-President*John G. Matt, M.D., *Secretary-Treasurer*Jack Spears, *Executive Secretary*

Vol. 16

TULSA, OKLAHOMA, DECEMBER, 1950

No. 12

## ELECTION OF OFFICERS SCHEDULED

Tulsa County Medical Society to Name Eighteen  
Officials in Annual Election on December 11,  
1950. Committees to Report.

Members of the Tulsa County Medical Society will meet Monday, December 11, 1950, in an annual business meeting and election of officers. Eighteen officials will be named from a list of 53 members eligible to hold office. All standing and special committees will render their annual report of activities and the membership will fix annual dues for 1951. The meeting will be at The Mayo, beginning promptly at 8:00 P.M. There will be no scientific program.

Officers to be elected include President-Elect (to serve as President in 1952), Vice-President, Secretary-Treasurer, one member of the Board of Trustees, two members of the Board of Censors, one member of the House of Delegates, and eleven alternate delegates. Dr. W. A. Showman, Tulsa dermatologist elected last year, will assume office as President on January 1, 1951, succeeding Dr. Fred E. Woodson.

Dr. Homer A. Ruprecht is the retiring member of the Board of Trustees. Hold-over members are Dr. Hugh C. Graham (1951), Dr. Maurice J. Searle (1952), Dr. Robert E. Funk (1953), and Dr. John E. McDonald (1954). Dr. Graham was elected last year to complete the term of Dr. Marshall O. Hart, who resigned to serve as Vice-President for the year. Trustees serve a term of five years each.

There are two vacancies on the Board of Censors. The retiring member is Dr. J. D. Shipp. An additional vacancy has been created by the departure of Dr. Thomas H. Davis for military service. Dr. Walter S. Larrabee has been serving in the interim upon presidential appoint-

ment as provided by the By-Laws. The third member, Dr. Thomas J. Hardman, will serve through 1952. Censors serve a term of three years each.

Dr. W. A. Showman is the retiring member of the House of Delegates. Hold-over members are Dr. W. A. Dean (1951), Dr. A. B. Carney (1951), Dr. Charles G. Stuard (1952), Dr. John G.

(Continued On Page 22)

### THE ELIGIBLES

Allen, V. K.	Matt, John G.
Armstrong, O. C.	Munding, L. A.
Atkins, P. N., Jr.	Nelson, Frank J.
Black, H. J.	Nelson, I. H.
Blocksom, B. H.	Orr, H. S.
Boone, W. B.	Park, F. R.
Brown, W. E.	Perry, John C.
Browne, H. S.	Pollack, Simon
Buchan, William	Ray, R. G.
Chalmers, J. S.	Ruprecht, H. A.
Craig, Paul E.	Schreck, P. M.
Dean, W. A.	Searle, M. J.
Ford, H. W.	Shipp, J. D.
Funk, Robert E.	Showman, W. A.
Graham, H. C.	Sinclair, F. D.
Haralson, C. H.	Spann, L. A.
Hardman, T. J.	Stevenson, James
Hart, M. O.	Stuard, C. G.
Henry, G. H.	Stuart, F. A.
Hill, O. L.	Turnbow, W. R.
Hoke, C. C.	Underwood, D. J.
Hoover, W. D.	Underwood, F. L.
Hudson, D. V.	Walker, W. A.
Larrabee, W. S.	Wiley, A. Ray
Lusk, E. M.	Woodson, F. E.
McDonald, J. E.	Yandell, H. R.
McGill, Ralph A.	



## RESEARCH FOUNDATION OPENS DOORS

The Oklahoma Medical Research Foundation building, a million dollar research center adjacent to the University of Oklahoma School of Medicine, opened its doors at Oklahoma City on October 7, 1950. A program of research is already under way under the direction of Dr. Edward C. Reifenstein, Jr., prominent New York scientist who assumed his duties as Director of Research on November 1st.

The completion of the modern functional building climaxes a five year period of organization by the University of Oklahoma School of Medicine Alumni Association, sponsors of the project. Designed as a general medical research center, the Foundation is expected to attract nationally known medical scientists to Oklahoma for comprehensive research studies.

The first two projects to be inaugurated include a study of the use of certain chemical compounds for use in the treatment of arthritis and a second seeking materials for effective aid in the treatment of leukemia. Both are under the immediate supervision of Dr. M. N. Huffman, formerly associated with the biochemistry

staff of Southwestern Medical School, Dallas, Texas. The major field of research, as presently planned will be Gerontology — the science of aging.

Costing in excess of \$1,000,000, the new building is 242 feet long with one wing extending 128 feet deep. It has three stories and is designed for 42 completely equipped laboratories. Entrance is through a circular glass lobby where a beautiful suspension staircase without visible means of support catches the eye. The main floor houses a delicate instrument room, the mechanical equipment, processing laboratories, centrifugal room, receiving docks, supply room, maintenance and administrative offices, and staff dining room.

The second floor is devoted to research activities, as is the third, and both floors are designed to permit easy modifications in the arrangement of the various facilities. Included in the building are diagnostic x-ray facilities, micro-photography facilities, animal quarters, and temperature controls of unusual extents.

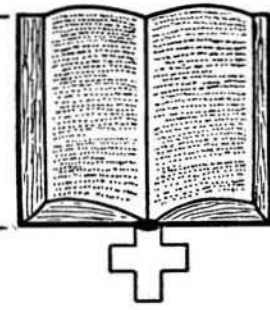
A \$250,000 research hospital wing devoted to cancer and heart cases is now under construction on the Foundation grounds.





# THE MEDICAL LIBRARY

Library of the Tulsa County  
Medical Society



## Medical Library Committee:

John G. Matt, M.D., Chairman

Morris B. Lhevine, M.D.

David V. Hudson, M.D.

Felix R. Park, M.D.

Robert E. Funk, M.D.

Miss Irma A. Beehler, *Librarian*

Telephone 4-1461

## GIFTS OF THE MONTH—:

**Baruch Committee on Physical Medicine and Rehabilitation, Chicago, Illinois.** Baruch, Simon, M.D. An Epitome of Hydrotherapy For Physicians, Architects, and Nurses. 1920. Reprinted by W. B. Saunders Company, Philadelphia, Pa., 1950, pp. 205, ill. 35.

**Dr. Hugh J. Evans.** Thorner, M. W., M.D. Psychiatry in General Practice, W. B. Saunders Company, Philadelphia, Pa., 1948, pp. 659, special references.

**American Cancer Society, Inc.** Haagensen, C. D., M.D. Carcinoma of the Breast. Fifth in a series on early recognition of cancer. American Cancer Society, Inc., New York, N. Y., 1950, pp. 120, fig. 56, references.

## RECENT PUBLICATIONS BY MEMBERS OF THE TULSA COUNTY MEDICAL SOCIETY—:

**Dr. Samuel J. Bradfield.** Cystic Diseases and Non-Malignant Tumors of the Female Breast. Proceedings of the Staff Meeting of Hillcrest Memorial Hospital, 8:217-219 (September), 1950.

**Dr. Ralph A. McGill.** Carcinoma of the Breast. Proceedings of the Staff Meeting of Hillcrest Memorial Hospital, 8:219-228 (September), 1950.

The showing of surgical films in the Medical Library each Wednesday afternoon will be discontinued during the month of December but will be resumed in January, 1951. A complete schedule of showings for that month will be published in the next issue of The Bulletin.

Two books reported in the list of gifts in the last issue of The Bulletin were Wright's **Vascular Diseases In Clinical Practice** and Luck's **Bone and Joint Diseases**.

Wright's is a clinical guide to technics for the recognition and evaluation of each individual case of vascular disease together with specific measures for treatment and prevention of recurrences. There are 25 chapters devoted to diagnosis and management of some of the vascular syndromes whose etiology remains unknown. One chapter is devoted to industrial and medico-legal medicine. The book is a supplement to existing ones on heart disease.

Bone and Joint Diseases, Pathology Correlated with Roentgenological and Clinical Features, by Luck presents the diagnosis and differential diagnosis of many complex diseases by correlating physiology and pathology. A few of the 25 chapters deal with acute infections of bones and joints; Pager's disease; skeletal manifestations of endocrine disorders; bone changes produced by lead, bismuth, phosphorus, radium, and flourine; tumors, benign and malignant.

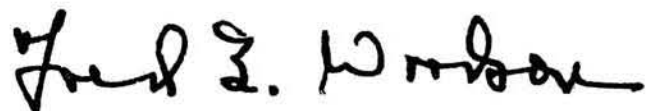
# PRESIDENT'S PAGE

There is a peculiar quality about time which we have all observed—the older we get the more quickly it seems to pass. As a boy it seemed to me the few days between Thanksgiving and Christmas constituted an eternity. Today, the stores downtown blossom into their holiday decorations and I exclaim, "What? Christmas here again?" And so a year has passed, not as the multiple eternities of youth, but quickly, unobtrusively, almost ruthlessly. And with the passing of the year my administration as President of your Tulsa County Medical Society has come to an end.

I would be amiss in my obligations if I did not use these few lines to express to you my appreciation of your kindness in bestowing the honor of being your President upon me. It has been an enjoyable experience, made doubly so by the splendid cooperation and enthusiasm of the membership for our program of work. I hope something has been accomplished this year by this teamwork between the officers and the membership; how much and how well you must judge for yourself from our annual reports and from your own observations.

May I wish you a very Merry Christmas and the best of everything to you in the New Year. I hope that in the months to come you will continue to maintain the same high regard for our profession and demonstrate your confidence in its future as an element of a free democracy. We have something fine in our chosen work, something which we want to keep on the high levels of prestige which it has long enjoyed. I am confident the fine men and women of our Tulsa profession will do their share in meeting this obligation.

Sincerely,



President

**a quarter of a century**

**of**

**SERVICE**

**to the medical profession**

**25 Years** *is a long time. In the quarter of a century since 1925, when we first opened the Medical Arts Prescription Shop, we have learned how to serve you and your patients in the most efficient manner. The know-how of a reliable prescription service, the experience of our competent registered pharmacists—all are products of the twenty-five years we have spent in accurately compounding your prescriptions. Take advantage of our experience. Be our customers for another quarter of a century.*

**FOR TULSA'S  
FINEST  
PRESCRIPTION  
SERVICE, JUST CALL  
4-0121**

*Merry Christmas*

**MEDICAL ARTS PRESCRIPTION SHOP**

Medical And Dental Arts Bldg.

**O. L. PRATHER, MANAGER**

**PHONE 4-0121**

**TULSA**

**The BULLETIN**

RALPH F. MARTIN, M.D.  
*Editorial Supervisor*

BENJAMIN W. WARD, M.D.

GIFFORD H. HENRY, M.D.  
*Associate Editors*

JACK SPEARS, *Managing Editor*



*Published monthly on the 3rd day of each month at the executive offices of the Tulsa County Medical Society, 1202 Medical Arts Building, Tulsa, Oklahoma.*

---

Vol. 16 TULSA, OKLA. No. 12

---

**MULTIPLE SURVEYS**

Here in the Tulsa County Medical Society we have come to look with a jaundiced eye upon the multiplicity of health surveys which have made their appearance in Tulsa in the last several years. With abnormal frequency the Board of Trustees is asked to endorse or authorize active Society participation in a survey or study of health conditions being conducted by this group and that group. As the instrument of organized medicine in Tulsa County we usually go along with such studies and lend our assistance, such as it is, to the collection and evaluation of the desired statistics. There is little doubt that some of these studies are excellent in all respects, as for instance the recent survey made by Dr. Ira E. Hiscott and associates for the Tulsa Junior League. Such reliable studies form a valuable index to health conditions in the area. At the same time, there is little doubt that some of these surveys are conducted for the express purpose of securing information about health deficiencies which can be distorted and used productively in the fight for government health insurance. This underhanded device has been effectively employed on several occasions. What is worse, some of the responsible surveys often have their results distorted and employed as ammunition for socialized medicine.

We feel there are far too many of these surveys. Many overlap and some seek identical information which has been already accumulated. The number of studies in child health conditions in Tulsa County is an excellent example. We wonder why it is necessary to periodically undertake an entirely new survey of the same conditions. True, some of the earlier studies are not reliable. Some have been conducted in an inefficient and haphazard manner. But the reliable studies are identifiable, most are readily available, and the repeated expenditure of time and money in gathering duplicate information is a senseless waste as we see it.

In our opinion much could be accomplished through a coordinated program administered by a central agency — as for instance the Health Section of the Tulsa Council of Social Agencies or the Health Committee of the Tulsa Chamber of Commerce — to the effect that the number of these duplicating surveys could be reduced, that the results of past surveys could be evaluated and analyzed and made available in a public file. This would be quite a task in itself and one certain to evoke considerable criticism in many quarters. It is our opinion that most surveys are designed to produce the results which the conductor wishes to produce; an impartial coordinated survey might not be so kind to the factional interests which are reflected in individual studies.

As one final observation we would note that many of the recommendations of the more reliable studies go unheeded and our health conditions are perpetuated by a lack of responsible interest. Here again, a strong central evaluating agency could serve as the medium by which correctional measures could be instituted. We think its an important and serious problem in its basic complexity, one badly in need of a workable solution.

**A DREAM COME TRUE**

Dr. Tom Lowry's dream has come true. The opening of the Oklahoma Medical Research Foundation at Oklahoma City last October would have been a great thrill to the late beloved Dean of the

*(Continued On Page 18)*



**GOOD  
RESULTS  
REPORTED**

## in Intractable Dysmenorrhea

---

Filler in J.A.M.A.<sup>1</sup> reports remarkably good results in the treatment of intractable functional dysmenorrhea when methyltestosterone is administered for the six days preceding ovulation. The gratifying relief of pain in this series is attributed to the use of methyltestosterone at this particular time of the cycle. It should be noted that there was no masculinization nor interference with ovulation.

The most economical and efficient method of administering the male hormone is with Metandren<sup>®</sup> Linguets.<sup>®</sup> This unique form of

methyltestosterone is specially shaped to fit comfortably between the gum and cheek and is highly compressed to insure slow, effective absorption of the hormone through the oral mucosa.

*Suggested Dosage:* One 5 mg. Linguet (equivalent to one 10 mg. tablet orally) three times daily for six days before estimated time of ovulation. *Metandren Linguets:* Issued in 5 mg. (white), 10 mg. (yellow), scored. Ciba Pharmaceutical Products, Inc., Summit, N. J.

2/1420M

L. Filler, W.: J. A. M. A., 143: 1235 (Aug. 5,) 1950

**METANDREN LINGUETS**

## DECEMBER MEDICAL CALENDAR

**FRIDAY, December 1st:**

Semi-annual premiums, Blue Cross Hospital Insurance, Physicians & Surgeons group, due and payable on this date. Make all payments to Tulsa County Medical Society, 1202 Medical Arts Building, Tulsa.

Clinical conference, St. John's Tumor Clinic, 8:30 A.M.

**MONDAY, December 4th:**

Hillcrest Hospital Staff Meeting

American Medical Association, Interim Session, opens at Cleveland, Ohio.

**TUESDAY, December 5th:**

St. John's Tumor Clinic, 8:30 A. M.

**THURSDAY, December 7th:**

Medical Broadcast, "This Is Your Doctor," Radio Station KTUL, 9:45 P.M.

**FRIDAY, December 8th:**

Clinical conference, St. John's Tumor Clinic, 8:30 A.M.

**SATURDAY, December 9th:**

Final date to pay Blue Cross Hospital Insurance semi-annual premiums, Physicians & Surgeons Group.

**MONDAY, December 11th:**

Tulsa County Medical Society, annual business meeting and election of officers, The Mayo, 8:00 P.M. No scientific program.

**TUESDAY, December 12th:**

St. John's Tumor Clinic, 8:30 A.M.

**THURSDAY, December 14th:**

Medical Broadcast, "This Is Your Doctor," Radio Station KTUL, 9:45 P.M.

**FRIDAY, December 15th:**

Clinical conference, St. John's Tumor Clinic, 8:30 A.M.

Copy deadline for the January issue of The Bulletin.

**MONDAY, December 18th:**

St. John's Hospital Staff Meeting.

**TUESDAY, December 19th:**

St. John's Tumor Clinic, 8:30 A.M.

**WEDNESDAY, December 20th:**

Board of Trustees Meeting, Tulsa County Medical Society, 1202 Medical Arts Building, 1:00 P.M.

**THURSDAY, December 21st:**

Medical Broadcast, "This Is Your Doctor," Radio Station KTUL, 9:45 P.M.

**FRIDAY, December 22nd:**

Clinical conference, St. John's Tumor Clinic, 8:30 A.M.

**SATURDAY, December 23rd:**

The Executive Offices of the Tulsa County Medical Society will be closed until Tuesday, December 26th, in observance of the Christmas holidays.

**MONDAY, December 25th:**

Merry Christmas!

No Tulsa County Medical Society meeting on this date.

**TUESDAY, December 26th:**

St. John's Tumor Clinic, 8:30 A.M.

**THURSDAY, December 28th:**

Medical Broadcast, "This Is Your Doctor," Radio Station KTUL, 9:45 P.M.

**FRIDAY, December 29th:**

Clinical conference, St. John's Tumor Clinic, 8:30 A.M.

*Merry Christmas*

**T. ROY  
BARNES  
DRUGRY**

603 S. Boulder



**MEDICAL SERVICE SOCIETY OF AMERICA**

Membership Roster, Tulsa Chapter

<i>Name:</i>	<i>Representing:</i>	<i>Telephone:</i>
William A. Cates	E. R. Squibb Co.	7-1267
C. R. Doran	Lakeside	Claremore
Carl Gibson	William S. Merrill Co.	4-0956
R. C. Gooch	Abbott Laboratories	9-4389
J. L. Hedges	Massengill	6-8538
Dave Lankford	Lederle	
Kyle Lloyd	Wyeth, Inc.	5-1882
Joe Loudenback	Flint-Eaton	7-1418
Ralph L. Miller	Hoffman-LaRoche	6-2928
R. Wayne Morrow	Bauer & Black	2-0598
J. D. Nance	E. R. Squibb Co.	5-8575
Dan P. Payne	William S. Merrill Co.	6-5643
Al Poythress	E. R. Squibb Co.	7-9415
Tom Sellers	G. D. Searle	9-7361
Bill Walker	Parke-Davis	4-9261
Preston Walker	Upjohn	7-6464
J. B. Waters	Winthrop-Stearns	9-4045



dial 5-3238 for a  
**PUBLIC HEALTH ASSOCIATION  
VISITING NURSE**



JAMES SHADDOCK



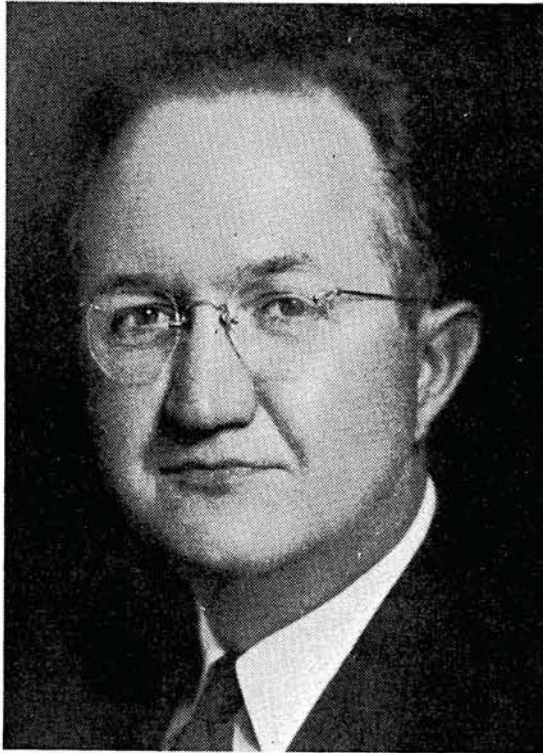
DEANE RALEY

*Ethical Prescriptionists*

**FIFTEENTH AT QUAKER**

**Telephone 4-3133**





**Dr. Lester R. Dragstedt**

**GUEST SPEAKERS ANNOUNCED FOR 1951 ANNUAL MEETING**

An outstanding group of nationally known medical personalities will highlight the scientific program of the 1951 annual meeting of the Oklahoma State Medical Association, to be held in Tulsa next May 21-23. Among those who have already accepted invitations to appear as guest speakers are:

*Dr. Lester R. Dragstedt*, Professor and Head of the Department of Surgery, University of Chicago School of Medicine, Chicago, famous for his vagotomy and other abdominal surgery.

*Dr. Ramon J. Castroviejo*, Associate Professor of Clinical Ophthalmology, Columbia University College of Physicians and Surgeons, New York, world famous for his development of the techniques of corneal transplantations.

*Dr. Elliott P. Joslin*, Professor of Medicine, Harvard University School of Medicine, Boston, one of the foremost world authorities on diabetes.

*Dr. Anton J. Carlson*, Professor of Physiology, University of Chicago School of Medicine, Chicago, famed for the studies into the nature of hunger.

*Dr. John L. McKelvey*, Chairman of the Department of Obstetrics & Gynecology, University of Minnesota School of Medicine, Minneapolis, prominent gynecological surgeon.

*Dr. James G. Hughes*, Professor of Pediatrics, University of Tennessee School of Medicine, Memphis, appearing for a second time on the State Association program by popular request.

*Dr. Harrison R. McLaughlin*, nationally known orthopedic surgeon and specialist in industrial medicine, New York.

A guest speaker in Pathology will be announced later.

Dr. Robert E. Funk of Tulsa, General Chairman, has announced that sessions of the 1951 meeting will be at The Mayo Hotel.

Doctors wishing to appear on the scientific program are reminded that titles and synopses of their papers should be in by January 15, 1951. Such material should be sent to the Tulsa County Medical Society, 1202 Medical Arts Building, Tulsa.

*Delivery*

WITH US IS  
A PLEASURE —  
NOT A PROBLEM

*just telephone*

**4-3103**

**SCOTT ROBISON'S  
PRESCRIPTION  
STORE**

**1303 SOUTH MAIN**

## NEW COMMUNICABLE DISEASE REGULATIONS ANNOUNCED

The Tulsa City-County Health Department has announced that "The Control of Communicable Diseases In Man," 7th edition, 1950, published by the American Public Health Association, will constitute new official rules and regulations governing communicable diseases control in Tulsa County. This same manual has been adopted by the Oklahoma State Department of Public Health for control of communicable diseases in the State.

The new rules place emphasis upon education of the family and the use of anti-biotics along with the discontinuation of placarding and quarantining of contacts in the minor communicable diseases.

Under the new regulations children with measles and german measles may be released from isolation seven days after onset if no symptoms persist; chickenpox seven days after onset if scabs are dry; mumps also in seven days after onset if all swelling has disappeared.

Children with reportable communicable

disease will be released from isolation through the Health Department as in the past. The reporting of chickenpox and mumps by physicians is now optional. A school child with either disease may be released from isolation by the family physician without clearing through the Health Department.

An outline of the rules for exclusion from school of children with communicable diseases will be mailed to physicians through the Tulsa County Medical Society offices. Several copies of "The Control of Communicable Diseases In Man" are in the Medical Library.

---

### EDITORIAL

*(Continued From Page 12)*

Oklahoma University School of Medicine. He often used to sit and talk with his professional friends from over the State, visualizing with his great sincerity the future of Medicine in Oklahoma. He saw this State not as the frontier wasteland where culture and intellect were barren, but rather as a fertile place where men and women could make homes, where doctors could practice their chosen profession and enrich the community with the products of healthful living. The Oklahoma Medical Research Foundation will contribute much to the way of life in this and all states. It will add stature to Oklahoma Medicine and attract to our State the medical scientist by giving him the facilities for medical research. And it is not inconceivable that from out of this fine project will come an enduring contribution to mankind. Dr. Lowry would have liked that; it will be the justification of the great confidence he had in Oklahoma and the fine men who practice medicine in this State.

---

DR. BYRON L. BAILEY was recalled to the Navy Medical Corps on November 15, 1950, reporting to the United States Naval Base at San Diego, California, for subsequent assignment. Other physicians who have been recalled to duty in the last several months include DR. NEVIN W. DODD, DR. THOMAS H. DAVIS, DR. HAROLD L. BEDDOE, and DR. JOHN F. GRAY, JR.

## HARVARD DRUG STORE

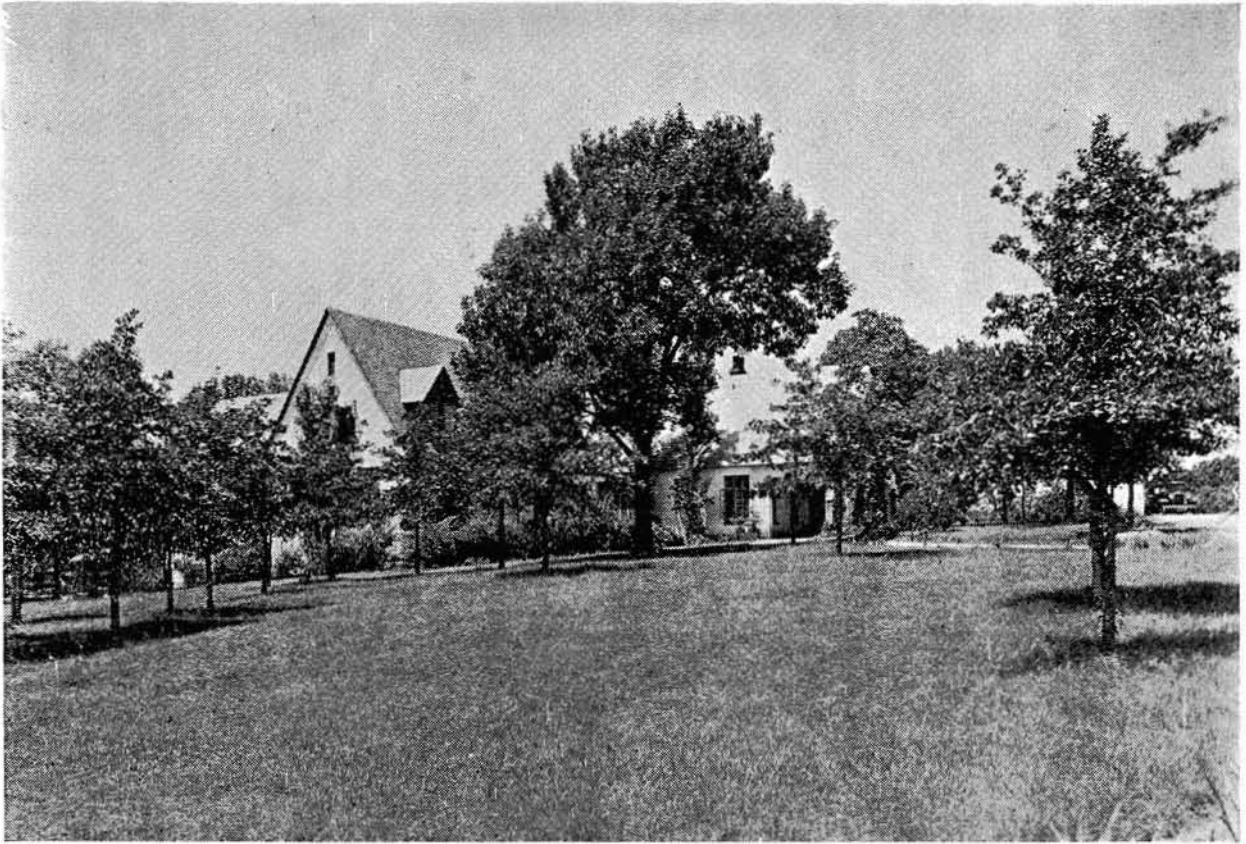
B. C. SHINN, Owner

PHONE 6-2186

*The  
Suburban  
Prescription  
Store*

FREE  
PRESCRIPTION  
DELIVERY

3244 E. 11th St.  
Tulsa



## *For Convalescent Children*

*This hospital provides convalescent care to children ages 2-15. Graduate nurses in attendance 24 hours, modern physical therapy department and registered physical therapist, registered occupational therapist, supervised dietetics. Public school instruction under Tulsa Board of Education. Consulting Medical Staff. Contact Mrs. Lee Mulhall, Director, telephone 7-3311. Your inspection invited. Approved by Crippled Children's Commission, National Foundation For Infantile Paralysis, private insurance companies.*

# **JUNIOR LEAGUE CONVALESCENT HOSPITAL FOR CHILDREN**

4900 South Lewis Road

Telephone 7-3311

## A BIG TIME-SAVER FOR EVERY DOCTOR



This handy booklet for new mothers was "built to doctors' orders". It contains blank forms for filling in your instructions and formulas.

It provides a permanent case-history record. A memo will bring you a sample...or as many as you want for your daily practice... without obligation.

Many doctors are prescribing "Daricraft Homogenized Evaporated Milk". It is always uniform, safe, sterilized, easy to digest, and high in food value and minerals. Daricraft contains 400 U. S. P. units of Vitamin D per pint.



PRODUCERS CREAMERY CO., SPRINGFIELD, MO.

## NEW MEMBERS

As this issue of The Bulletin went to press, the following physicians were applicants for membership in the Tulsa County Medical Society, to be voted upon at the regular meeting of Monday, November 27, 1950:

**Mark H. Donovan, M.D.** Perry Clinic, 222 East 5th Street, Tulsa. Medical Degree, St. Louis University School of Medicine, 1938. Interned Charity Hospital, New Orleans, Louisiana, one year. Resident in Pediatrics, St. Mary's Group of Hospitals, three years. Formerly in practice at Duncan, Oklahoma; United States Army Medical Corps; Ada, Oklahoma. Specialty, Pediatrics. Recommended by Dr. Hugh Perry and Dr. Richard E. McDowell. By transfer from Ponotoc - Murray County Medical Society, Oklahoma.

**H. Orville Loyd, M.D.** Court Arcade Building, Tulsa. Medical Degree, Kansas University Medical School, 1940. Interned Polk County Hospital, Des Moines, Iowa, one year. Resident in Cardiovascular Diseases, Cook County Hospital, Chicago, two years. Senior Resident in Medicine, DePaul Hospital, St. Louis, one year. Fellow in Medicine, Barnes Hospital, St. Louis, one year. Formerly in practice at Arkansas City, Kansas, and Jefferson City, Missouri. Specialty, Cardiology. Recommended by Dr. Russell C. Pigford and Dr. Earl I. Mulmed. By transfer from Cole County Medical Society, Missouri.

DR. and MRS. JAMES B. THOMPSON, are the proud parents of a baby boy, born November 3, 1950. Congratulations!

DR. WILLIAM A. WALKER has removed his offices to 1215 South Utica, Tulsa.

DR. J. E. WALLACE has been decorated by the Cuban Government for his services in the Spanish-American War.

Its a girl for DR. and MRS. HENRY A. BROCKSMITH, born November 15th. Congratulations!

## PROFESSIONAL TRADITION

In compounding a prescription, as in all professional work, experience is an important, even priceless, ingredient.

*Be Certain with Curtain*

## CURTAINS PRESCRIPTION LABORATORY

SIXTH AND BOULDER

PHONE 4-7116

*Across the Street North From Medical Arts Bldg.*

*Until 150 years ago—ice cream was considered a confection instead of a food.*

*Today—research shows that ice cream is high in calcium, and supplies significant amounts of other dietary essentials, especially protein, vitamin A, and riboflavin.*

## DAIRY COUNCIL OF TULSA

*A non-profit health education organization supported by the local dairy industry promoting health and human welfare for the city of Tulsa.*

ESTHER M. MUSIL, *Nutritionist*  
312 Wright Building  
Telephone 4-8280

*Affiliated with*  
National Dairy Council

# ST. JOHN'S HOSPITAL

*A Leading  
Institution  
In  
Oklahoma  
Medicine*

1923 SOUTH UTICA  
TULSA, OKLAHOMA

TELEPHONE  
6-2161



## DICK KELLO

Offers

Prompt Motor Delivery  
Of Your Prescriptions

Telephone 6-2156

## BALL DRUG STORE

College at Admiral

## ANNUAL ELECTION

*(Continued from Page 7)*

Matt (1952), Dr. W. D. Hoover (1952), Dr. Victor K. Allen (1953), Dr. Walter S. Larrabee (1953), Dr. Robert E. Funk (1954), Dr. Marshall O. Hart (1954), and Dr. J. S. Chalmers (1954).

Eleven alternate delegates will be selected for a term of one year. Those serving in 1950 were Dr. A. Ray Wiley, Dr. Logan A. Spann, Dr. Maurice J. Searle, Dr. Franklin D. Sinclair, Dr. Earl M. Lusk, Dr. I. H. Nelson, Dr. Herbert S. Orr, Dr. Donald V. Crane, and Dr. Thomas J. Hardman.

Dr. Marshall O. Hart is the incumbent Vice-President and Dr. John G. Matt Secretary-Treasurer. Terms of both expire with the year.

As provided by the Constitution & By-Laws, a member must have attended fifty per cent of the Society's regular meetings of the year and must have been a member for five years or more to be eligible to hold office. The list of 53 eligible members is printed herewith. The attendance records are compiled from the attendance book placed at the door at each meeting; under regulations of the Board of Trustees, a member does not receive credit unless his signature appears on the record book.

The membership will be presented with a suggested operating budget for 1951, as prepared and approved by the Board of Trustees, with a recommendation for the amount of the 1951 annual membership dues. Dues for the current year are \$58.00.



*This attractive clinic building has been recently opened at 1645 East 15th Street by Dr. Herbert S. Orr and Dr. Louise Wilcox. Completely equipped with laboratory, x-ray facilities, examining rooms, offices, and mechanical plant, it offers a typical example of many small clinics being constructed in Tulsa residential areas.*

# SPECIAL PURPOSE FOODS

LOW-SODIUM FOODS

LOW-CALORIE FOODS

DIABETIC FOODS

Phone 3-1106

*Akin's*

718 S. Boulder

## Professional Directory

**VICTOR K. ALLEN, M. D., F.A.C.S.**  
Diplomate American Board of Surgery  
Diseases of the Rectum  
1001 Medical Arts Bldg. Tulsa

**TERRELL COVINGTON, JR., M.D.**  
Internal Medicine  
Consultation Gastroscopy  
223 Court Arcade Bldg. Ph. 3-2724

**S. Y. ANDELMAN, M.D.**  
Diagnosis & Treatment of  
Arthritis & Rheumatic Diseases  
1611 South Boston Ph. 2-3885

**PAUL E. CRAIG, M.D.**  
General Surgery  
411 Daniels Bldg. Ph. 4-9674

**ROBERT L. ANDERSON, M.D.**  
Thoracic Surgery, Bronchoscopy,  
and Esophagoscopy  
807 Medical Arts Bldg. Tulsa

**SAMUEL E. FRANKLIN, M. D.**  
General Surgery  
1619 E. 15th Street Ph. 3-2109

**B. H. BLOCKSOM, M. D., F.A.C.S.**  
Diplomate, Boards of Surgery, Urology  
Practice Limited to Urology  
901 Medical Arts Bldg. Ph. 54-1888

**ROBERT E. FUNK, M.D.**  
Practice Limited to Internal Medicine  
212 Medical Arts Bldg. Tulsa

**MANUEL BROWN, M. D.**  
Allergic Diseases  
1619 E. 15th Street Ph. 54-5552

**N. C. GADDIS, M.D.**  
Diagnosis & Internal Medicine  
Special Attention to Lung Diseases  
1530 South Peoria St. Tulsa

**HOWARD M. COHENOUR, M.D.**  
Urology  
902 Medical Arts Bldg. Ph. 5-8467

**C. E. GILLILAND, M.D.**  
Practice Limited to Internal Medicine  
Gastroenterology  
Suite 210 Court Arcade Bldg.  
Tulsa, Oklahoma

## Professional Directory

<p style="text-align: center;"><b>JOHN F. GRAY, JR., M.D.</b> Neuropsychiatry</p> <p>405 Medical Arts Bldg.      Ph. 3-2283</p>	<p style="text-align: center;"><b>A. T. KORNBLEE, M.D.</b> Practice Limited To Skin Diseases Diplomate, American Board of Dermatology &amp; Syphilology</p> <p>916 Medical Arts Bldg.      Tulsa</p>
<p style="text-align: center;"><b>HARRY GREEN, M.D.</b> Diseases of the Skin X-Ray &amp; Radium Therapy</p> <p>311 Medical Arts Bldg.      Ph. 4-7585</p>	<p style="text-align: center;"><b>WALTER S. LARRABEE, M.D.</b> <b>DELMAS B. JONES, M.D.</b> X-Ray Diagnosis &amp; Therapy Radium Therapy</p> <p>411 Medical Arts Bldg.      Ph. 4-3111</p>
<p style="text-align: center;"><b>MARSHALL O. HART, M.D.</b> General Practice</p> <p>1228 South Boulder      Ph. 2-5904</p>	<p style="text-align: center;"><b>E. N. LUBIN, M.D.</b> Diplomate, American Board of Urology Genito-Urinary Diseases 1106 Medical Arts Bldg. Office Ph. 3-6008      Res. Ph. 7-4388</p>
<p style="text-align: center;"><b>JAMES W. KELLEY, M.D.</b> Plastic and Reconstructive Surgery</p> <p>206 Philtower Bldg.      Tulsa</p>	<p style="text-align: center;"><b>JAMES D. MARKLAND, M.D.</b> Allergy</p> <p>411 Medical Arts Bldg.      Ph. 4-3111</p>

# SPRINGER CLINIC

Sixth and Cincinnati

**Tulsa**

**Telephone 5-6621**

**Medicine**

D. O. Smith, M.D.  
E. G. Hyatt, M.D.  
H. A. Ruprecht, M.D.  
Albert W. Wallace, M.D.  
Vincel Sundgren, M.D.  
Dean C. Walker, M.D.

**Neurology and Psychiatry**

Tom R. Turner, M.D.  
Joe E. Tyler, M.D.

**Neurosurgery**

Averill Stowell, M.D.  
Robert A. Hayne, M.D.

**Pediatrics**

G. R. Russell, M.D.

**General Surgery**

Carl J. Hotz, M.D.  
William Pratt, M.D.

**Urology**

K. F. Swanson, M.D.

**Ear, Nose and Throat**

Donald L. Mishler, M.D.

**Orthopedic Surgery**

Charles E. Brighton, M.D.

**Ophthalmology**

Otis S. Lee, M.D.

**Anesthesia**

M. R. Steel, M.D.



# Professional Directory

<p style="text-align: center;"><b>RALPH A. MCGILL, M.D., F.A.C.S.</b> Surgery-Radium</p> <p>1010 Medical Arts Bldg.    Ph. 4-4215</p>	<p style="text-align: center;"><b>L. C. NORTHRUP, M.D., F.I.C.S.</b> Gynecology &amp; Obstetrics</p> <p>1307 S. Main                      Ph. 3-0151</p>
<p style="text-align: center;"><b>EDWARD L. MOORE, M.D., F.A.C.S.</b> Surgery Only</p> <p style="text-align: center;">215 Braniff Bldg. Ph. 3-4789                      Res. Ph. 7-1623</p>	<p style="text-align: center;"><b>HERBERT S. ORR, M.D.</b> Surgery and Obstetrics</p> <p>1645 East 15th Street      Ph. 4-2658 Car Phone ZF8-2724</p>
<p style="text-align: center;"><b>IRON H. NELSON, M.D.</b> Clinical and Surgical Pathology</p> <p>1107 Medical Arts Bldg.                      Tulsa</p>	<p style="text-align: center;"><b>THE ORTHOPEDIC CLINIC</b> 619 South Main Street                      Tulsa</p> <p style="text-align: center;">Practice Limited To Bone &amp; Joint Surgery</p> <p style="text-align: center;"><b>JOHN E. McDONALD, M.D.</b> <b>FRANK A. STUART, M.D.</b> <b>JOHN C. DAGUE, M.D.</b></p>
<p style="text-align: center;"><b>MARQUE O. NELSON, M. D.</b> Practice Limited to Dermatology Radium and X-Ray Therapy</p> <p>510 Medical Arts Bldg.                      Tulsa</p>	



## TULSA CLINIC

915 South Cincinnati  
TULSA, OKLAHOMA

**COMPLETE CLINIC FACILITIES**

ANDRE B. CARNEY, M. D.

R. G. RAY, M. D.  
EARL M. LUSK, M. D.  
H. W. FORD, M. D.  
W. M. JONES, M. D.

O. L. HILL, M. D.  
JAMES C. PETERS, M. D.  
CRAIG S. JONES, M. D.  
CHARLES H. GLASS, D. D. S.

Telephone 4-0177

MISS BETTYE ADAMS, Director

A. D. MASON, Business Manager

## Professional Directory

<p><b>R. C. PIGFORD, M.D., F.A.C.P.</b>            American Board of Internal Medicine            Cardiovascular Diseases            203 Court Arcade Bldg. Ph. 3-8860</p>	<p><b>WADE SISLER, M.D.</b>            Orthopedic Surgery            8th &amp; Elgin Ph. 5-3123</p>
<p><b>SIMON POLLACK, M.D., D.A.B.R.</b>            Diagnostic and Therapeutic            Radiology            316 Braniff Bldg. Ph. 2-7517</p>	<p><b>CHARLES G. STUARD, M.D.</b>            Ophthalmology            221 Court Arcade Bldg. Ph. 4-3435</p>
<p><b>J. L. RICHARDSON, M.D.</b>            Orthopedic &amp; Traumatic Surgery            19 West 10th St. Tulsa</p>	<p><b>LEON H. STUART, M.D., F.A.C.R.</b>            X-Ray Diagnosis            1107 Medical Arts Bldg. Tulsa</p>
<p><b>HERSCHEL J. RUBIN, M.D.</b>            Diplomate American Board of Pediatrics            Diseases of Infants &amp; Children            1619 East 15th St. Tulsa</p>	<p><b>JAMES B. THOMPSON, M.D.</b>            General Surgeon            Diplomate, American Board of Surgery            1001 Medical Arts Bldg. Ph. 3-3318</p>
<p><b>PHILIP M. SCHRECK, M.D.</b>            Internal Medicine            201-202 Medical Arts Bldg. Tulsa</p>	<p><b>DRS. TRAINOR &amp; FIRST</b>            Cardiology &amp; Electrocardiology  <b>W. J. TRAINOR, M.D.</b>  <b>SAFETY R. FIRST, M.D.</b>            1011 Medical Arts Bldg. Ph. 5-7545</p>
<p><b>MAURICE J. SEARLE, M.D.</b>            Pediatrics            Diplomate, American Board of Pediatrics            512 Medical Arts Bldg. Tulsa</p>	<p><b>WILLIAM RAY TURNBOW, M.D.</b>            Diagnostic &amp; Therapeutic Blocks            2112 W. 41st St. Ph. 5-0653</p>
<p><b>J. D. SHIPP, M.D.</b>            Surgery and Diseases of the            Colon and Rectum            316 Medical Arts Bldg. Tulsa</p>	<p><b>ARNOLD H. UNGERMAN, M.D.</b>  <b>MILFORD S. UNGERMAN, M.D.</b>            Diagnosis &amp; Treatment of            Nervous and Mental Diseases            708 Medical Arts Bldg. Ph. 2-3151</p>
<p><b>W. A. SHOWMAN, M.D.</b>            Dermatology            408 Medical Arts Bldg. Ph. 3-7789</p>	<p><b>R. M. WADSWORTH, M.D.</b>            Pediatrics            1445 S. Quaker Ph. 3-4300</p>
<p><b>F. D. SINCLAIR, M.D., F.A.C.S.</b>            Certified American Board of            Obstetrics &amp; Gynecology            307 Medical Arts Bldg. Ph. 5-5337</p>	<p><b>J. E. WALLACE, M.D.</b>            Gynecology            914 Medical Arts Bldg. Ph. 2-6501</p>



For

**RADIANT HEALTH  
 BUOYANT ENERGY  
 SOUND BONES  
 BEAUTIFUL TEETH**

We Recommend

**Homogenized  
 'VITAMIN D' MILK**

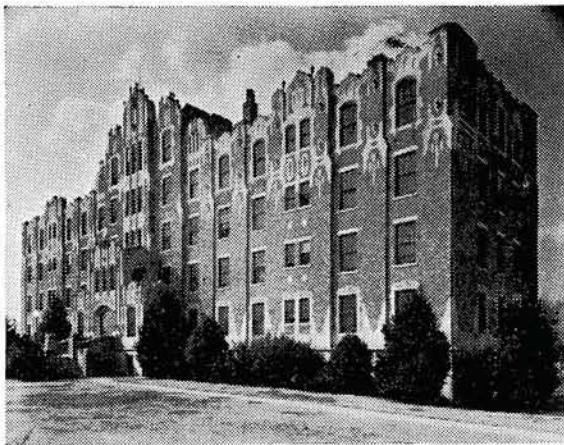
Fortified With 400 U.S.P. Units

Vitamin D Per Quart, By Vitex Process

**Beatrice Foods Co.**

215 North Denver

Telephone 4-2471



*One of Oklahoma's  
 finer hospitals*

1653 East Twelfth St.

Telephone 3-2131

TULSA, OKLAHOMA

**HILLCREST  
 MEMORIAL HOSPITAL**

Sec. 34.66 P. L. & R.

U. S. POSTAGE

**PAID**

TULSA 3, OKLA.  
PERMIT No. 13

(Return Postage Guaranteed)

## **COURTRIGHT IN THE COURT ARCADE**

Tulsa's only "*Ophthalmic - Dispenser*" - - - manufacturing and fitting eye-glasses exclusively for patients of the Eye-Physician (M.D.) - - - visit our complete and modernlv equipped laboratory.

Res. Phone 6-1289      25 YEARS EXPERIENCE      Office Phone 4-1613

### **MERKEL X-RAY CO.**

*Exclusive Distributors For—*

**Westinghouse X-Ray Equipment**

**Physical Therapy Equipment**



**Complete Stock  
X-Ray and Physical Therapy  
Supplies**



**TULSA**

1114 S. Boulder      Tel. 2-4897

**OKLAHOMA CITY**

1130 N. Hudson      Tel. 2-3522

### **MID-CONTINENT SURGICAL SUPPLY CO.**

**Hospital and Physicians  
Equipment and Supplies  
X-Ray Equipment**

*The Complete  
Surgical Supply Store*

We carry a complete stock of instruments, rubber goods, surgical dressings, sutures, laboratory stains or reagents, enamel-ware, examining room furniture, wheel chairs, supports and trusses.

PHONE 2-8169      TULSA  
610 SOUTH BOSTON

## **Commercial Printing Company PRINTERS**

We Print the Bulletin

OFFICE AND PLANT AT 417 EAST 3RD STREET

R. W. (Bob) HUDSON

Publications, Programs  
Advertising Literature,  
Office and Factory Forms  
Fine Personal Stationery

TELEPHONE 2-2450

**LIBRARY**

**TULSA COUNTY MEDICAL SOCIETY**