

LIBRARY  
TULSA COUNTY MEDICAL SOCIETY



# THE BULLETIN

*of the Tulsa County Medical Society*

*Build Tulsa*



## **IN THIS ISSUE**



Dr. Fred E. Woodson Assumes  
Office As Society President



The Medical Library



Annual Committee Reports  
Indicate Active Year In 1949



January Medical Programs

*It's Your*  
**RED CROSS**  
**BLOOD CENTER**  
*Encourage Donors*

---

Vol. 16

No. 1

---

January, 1950

*Tulsa  
med. Soc.*

new convenience • new flexibility in dosage  
new all-around usefulness

# 3 new water-soluble liquid vitamin preparations



## Poly-Vi-Sol

Each 0.6 cc. supplies:

Vitamin A	5000 USP units
Vitamin D	1000 USP units
Ascorbic Acid	50.0 mg.
Thiamine	1.0 mg.
Riboflavin	0.8 mg.
Niacinamide	5.0 mg.

## Tri-Vi-Sol

Each 0.6 cc. supplies:

Vitamin A	5000 USP units
Vitamin D	1000 USP units
Ascorbic Acid	50 mg.

## Ce-Vi-Sol

Each 0.5 cc. supplies:

Ascorbic Acid	50 mg.
---------------	--------

Each of these preparations is ideally suited for routine prophylactic or therapeutic vitamin supplementation for infants and children as well as adults.

Water-soluble, pleasant tasting, they can be stirred into the infant's formula, or into

fruit juice, milk, cereals, puddings, etc.; or incorporated in mixtures for tube feeding.

Each is scientifically formulated and ethically marketed. They are supplied in 15 and 50 cc. bottles, with an appropriately calibrated dropper.

**MEAD'S**

MEAD JOHNSON & CO. EVANSVILLE 21, IND., U.S.A.



**If she is one  
of your patients**



*...Your help now may spell the difference between unprovided-for old age and economic security.*

*Women in business who are nervous, emotionally unstable and generally distressed by symptoms of the climacteric almost inevitably experience a reduction in efficiency as well as earning power.*

*"Premarin" offers a solution. Many thousand physicians prescribe this naturally-occurring, oral estrogen because...*

- 1. Prompt symptomatic improvement usually follows therapy.*
- 2. Untoward side-effects are seldom noted.*
- 3. The sense of well-being so frequently reported tends to quickly restore the patient's confidence and normal efficiency.*
- 4. This "Plus" (the sense of well-being enjoyed by the patient) is conducive to a highly satisfactory patient-doctor relationship.*
- 5. Four potencies provide flexibility of dosage: 2.5 mg., 1.25 mg., 0.625 mg. and 0.3 mg. tablets; also in liquid form, 0.625 mg. in each 4 cc. (1 teaspoonful).*



*While sodium estrone sulfate is the principal estrogen in "Premarin," other equine estrogens...estradiol, equilin, equilinenin, hippulin...are probably also present in varying amounts as water-soluble conjugates.*

**"PREMARIN"**



**ESTROGENIC SUBSTANCES (WATER-SOLUBLE)  
also known as CONJUGATED ESTROGENS (equine)**



JAMES SHADDOCK

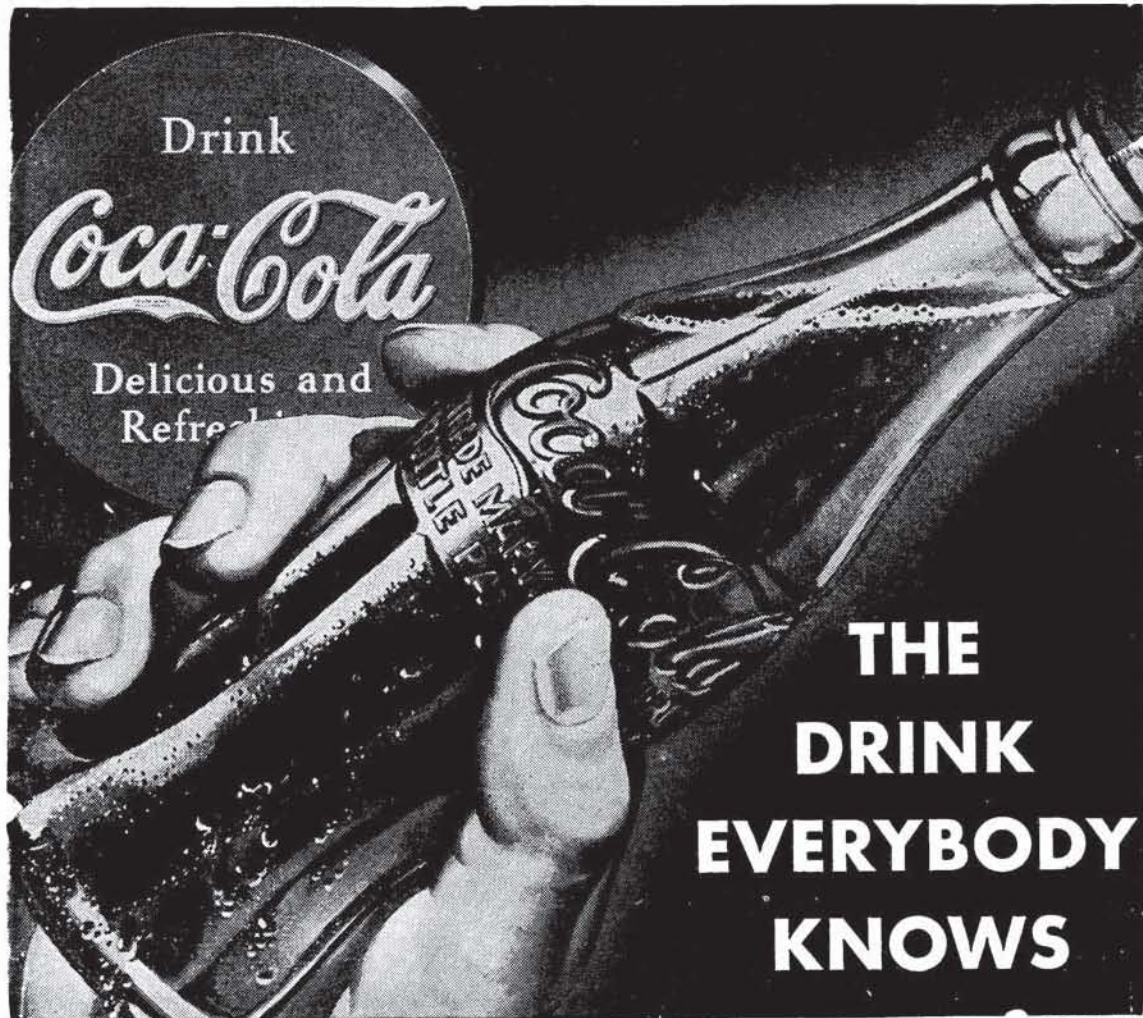


DEANE RALEY

## *Ethical Prescriptionists*

FIFTEENTH AT QUAKER

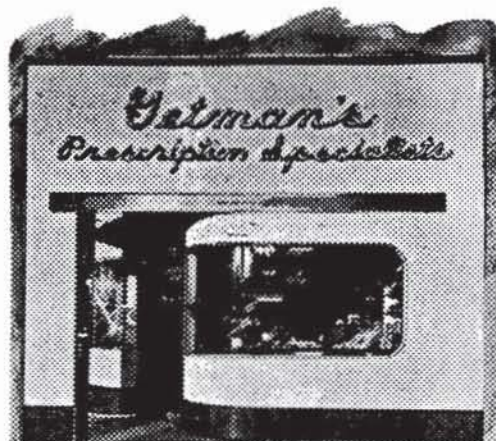
Telephone 4-3133





# GETMAN'S

ROY R. GETMAN, Founder



*Sixth and Main Sts.  
Phone - 3 6171*

## HAPPY NEW YEAR!

May good health, happiness, prosperity and contentment be with you during 1950. And - - - may your efforts continue to be crowned with success.

FREE DELIVERY NIGHT AND DAY.

WE GIVE S & H GREEN STAMPS

Sponsors of the "Tell Me, Doctor" Radio Broadcasts at 5:15 P.M. each Monday through Friday, KTUL, prepared by The Oklahoma State Medical Association.

## CONTENTS

Officers Named For 1950 .....	7
Photographs Of 1950 Officers .....	8
The Medical Library .....	9
President's Page .....	10
1949 Society Activities .....	11
Blue Ribbon Awards For 1949 .....	12
January Medical Calendar .....	15
Memphis Internist To Speak Here .....	17
New Members .....	20
Personals .....	20

## ADVERTISERS

Akin's Natural Foods .....	20
Ayerst, McKenna & Harrison .....	3
Ball Drug Company .....	22
Beatrice Foods, Inc. ....	27
Ciba Pharmaceutical Products .....	19
Coca-Cola Bottling Co. ....	4
Commercial Printing Co. ....	28
Courtright-Optician .....	28
Curtain's Prescription Laboratory .....	27
Daricraft .....	17
Dairy Council of Tulsa .....	22
Eli Lilly & Company .....	6
Getman Drug Store .....	5
Harvard Drug Store .....	20
Hillcrest Hospital .....	14
Mead Johnson & Company .....	2
Medical Arts Prescription Shop .....	13
Medical Service Society .....	16
Merkel X-Ray Co. ....	28
Mid-Continent Surgical Supply Co. ....	28
F. H. Paxton Co. ....	23
Professional Directory .....	24
Professional Drug Shop .....	14
Raley-Shaddock Pharmacy .....	4
Smith-Dorsey Co. ....	21
Spencer Road Sanitarium .....	21
Springer Clinic .....	25
St. John's Hospital .....	22
T. Roy Barnes Drugry .....	16



*two simple twists . . . 5 seconds*

Time saving is made easy with the newly designed disposable syringe for **‘Duracillin’** (Crystalline Procaine Penicillin—G, Lilly). Just two simple twists of the wrist, and it’s ready to use. Because it is presterilized and the dosage premeasured, it eliminates needless bother—saves precious time. Take this less pressing moment to order a supply for the daily occasions when every second counts. Complete literature on disposable syringes for **‘Duracillin’** is available from your Lilly medical service representative or will be forwarded upon request.





# THE BULLETIN

OF THE

## TULSA COUNTY MEDICAL SOCIETY

Fred E. Woodson, M.D., *President*W. A. Showman, M.D., *President-Elect*Marshall C. Hart, M.D., *Vice-President*John G. Matt, M.D., *Secretary-Treasurer*Jack Spears, *Executive Secretary*

Vol. 16

TULSA, OKLAHOMA, JANUARY, 1950

No. 1

### DR. SHOWMAN TO HEAD SOCIETY IN 1951

**Dr. Fred E. Woodson Assumes Office As President. Annual Dues Continue Unchanged. Dr. John G. Matt Again Reelected As Secretary-Treasurer.**

Dr. Winifred A. Showman, widely known Tulsa dermatologist and medical leader, was unanimously elected as President-Elect of the Tulsa County Medical Society at the organization's annual business meeting last December 12. He will serve as President in 1951, succeeding Dr. Fred E. Woodson, who was named to the office a year ago.

Other officers selected by the membership to serve in 1950 are:

Dr. Marshall O. Hart, general practitioner recently cited by the Board of Trustees for his work as Chairman of the Society's Fraudulent Practices Committee, elected Vice-President.

Dr. John G. Matt, proctologist, re-elected for a third term as Secretary-Treasurer.

Dr. John E. McDonald, orthopedic surgeon and retiring President of the Society, named to a five-year term on the Board of Trustees.

Dr. Hugh C. Graham, pediatrician, elected for a two-year term of office on the Board of Trustees and filling a vacancy occasioned by Dr. Hart's election as Vice-President.

Dr. Thomas J. Hardman, surgeon re-elected to a second term of three years as a member of the Board of Censors.

Dr. Robert E. Funk, internist, and Dr. Marshall O. Hart were each named to five-year terms as members of the House of Delegates. Dr. J. S. Chalmers, Sand Springs industrial medicine practitioner, was elected first alternate delegate and will serve as delegate in the event the

Society's qualifies an eleventh delegate by next May.

Other alternate delegates include Dr. A. Ray Wiley, Dr. Logan A. Spann, Dr. M. J. Searle, Dr. F. D. Sinclair, Dr. Earl M. Lusk, Dr. I. H. Nelson, Dr. Herbert S. Orr, Dr. Donald V. Crane, and Dr. Thomas J. Hardman.

The Society again fixed annual membership dues at \$58.00 for 1950 and authorized a conservative budget for operation of the year's activities. Dues to the local Oklahoma State Medical Association continue at \$42.00, making a total of \$100.00. This sum is now due and payable and may be paid in two equal installments of \$50.00 each, payable on January 1 and July 1, if desired.

Other business activities were kept at a minimum with annual committee reports scheduled to be mimeographed and distributed by mail in lieu of the usual oral presentations at the annual business meeting.

Dr. John E. McDonald, retiring President, received a rising vote of thanks from the Society for his services and in turn acknowledged the cooperation of membership throughout the year.

The new President-Elect, Dr. Showman, is a graduate of Washington University School of Medicine, St. Louis, Class of 1921. Following several years of post-graduate study in dermatology, he came to Tulsa in 1927 and soon became active in professional circles. He was a member of the Board of Trustees of the So-

(Continued on Page 18)



Dr. Marshall O. Hart  
Vice-President



Dr. Fred E. Woodson  
President



Dr. John G. Matt  
Secretary-Treasurer



Dr. W. A. Showman  
President-Elect

TULSA COUNTY  
MEDICAL SOCIETY  
OFFICERS  
AND TRUSTEES  
FOR  
1950



Jack Spears  
Executive Secretary



Dr. H. A. Ruprecht  
Trustee



Dr. Hugh C. Graham  
Trustee



Dr. John E. McDonald  
Trustee

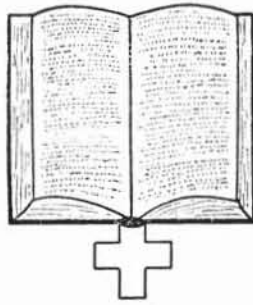


Dr. Robert E. Funk  
Trustee



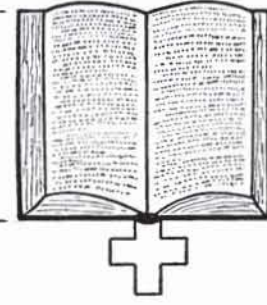
Dr. Maurice J. Searle  
Trustee





# THE MEDICAL LIBRARY

Library of the Tulsa County  
Medical Society



## Medical Library Committee:

Morris B. Lhevine, M.D., Chairman

W. A. Showman, M.D.

Fred E. Woodson, M.D.

John G. Matt, M.D.

F. L. Flack, M.D.

Miss Irma A. Beehler, *Librarian*

Telephone 4-1461

## 1949 ANNUAL REPORT OF THE LIBRARY COMMITTEE

The Library Committee of the Tulsa County Medical Society can report another year of considerable growth for the Library. There have been 1,365 personal visits of patrons, an increase of 208 over 1948; 3,504 books and journals loaned, an increase of 1,077; 1,289 reference questions completed, an increase of 349; and 102 loans made to or from other libraries, an increase of nine over the previous year.

The Library is receiving regularly 96 journals, together with many from various state and medical associations. There have been received twelve gifts of money to help defray subscription costs. The subscription price of all journals has been increased materially for 1950.

Through the use of the Medical Library Association exchange there have been received 634 back issues of journals needed to replace or add to those missing from our shelves in order to complete volumes for binding. About 75 volumes were received in bound form, saving us the added expense. However, we have had bound 251 volumes in the past year.

Purchases of seventeen books have been made. Our purchases, as well as all the gifts, have been published in the Bulletin of the Tulsa County Medical Society as they have been received.

One of the large tables in the Reading Room has been repaired and refinished to match other Library furniture. The Library has received a new coat of paint in a gray green color which will add much to its appearance and will be restful to the eyes.

The innovation of opening the Library on Tuesday evenings is proving successful as it provides an opportunity for reading and study in hours when there are few interruptions and disturbances. It also provides an opportunity for doctors who cannot find time during the day to avail themselves of the Library facilities.

The attorney for the Tulsa County Medical Society is now at work on the legal details of setting up the Endowment Fund of the Library as authorized by the Board of Trustees. This Fund should be in operation within a few months. It will provide a means of permanently endowing the Library through concentration of gifts of doctors and lay friends.

The Committee is pleased to report that although expenses have increased considerably during the past year, the Library has operated within the allotted budget, although the unused balance is small.

The Committee continues to rely upon the membership for suggestions for improvements and additions to the Library services.

Morris B. Lhevine, M.D., *Chairman*  
Medical Library Committee

# PRESIDENT'S PAGE

Each new President of the Tulsa County Medical Society invariably finds himself confronted with the same problem—the maintenance and continuation of the high standards set by his predecessor. In my case, I am certain this will require a tremendously active and progressive program throughout 1950 if Dr. John E. McDonald's record is to be equalled. He has done a fine job as President during 1949 and many of his achievements will remain as permanent monuments to his sincerity and endeavor.

The aims of my administration as your President are:

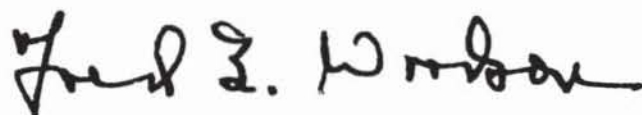
1. *To formulate and follow a program of activity which will benefit the doctor and the patient, which will assist the physician in the profitable practice of medicine at the highest scientific levels, and which will maintain the unity of the profession as a progressive and cooperative group.*

2. *To protect against those interests which would deprive American Medicine of its freedom as democratic practitioners of medicine.*

3. *To represent the profession in the most favorable manner to the lay public at all times.*

To attain these objectives your cooperation and interest will be essential. It is my intention to bring as many members as possible into active participation in Society affairs. This may necessitate sacrifices of valuable professional time, but I am certain the results which can be obtained will more than justify such sacrifices. With your help the Society can continue to go forward in the most progressive manner.

Sincerely,



President



## HIGH LEVEL OF ACTIVITY IN 1949

**Annual Committee Reports Disclose Many Accomplishments Of The Tulsa County Medical Society. Public Policy Program Proves Effective In Combating State Medicine.**

Activities of the Tulsa County Medical Society remained at a consistently high level of progress during Dr. John E. McDonald's administration in 1949, an examination of annual committee reports filed in the Executive Offices discloses.

Primary accomplishments for the year include:

(1) Establishment of a full-blown program of public relations designed to combat the current trend towards national socialism and state medicine and improvement of the doctor-patient relationship.

(2) Success of the Tulsa County Red Cross Blood Center, opened last January 12, 1949, under the joint sponsorship of the Tulsa County Chapter of the American Red Cross and the Tulsa County Medical Society.

(3) Reorganization of the Medical Credit Bureau, official collection agency of the Tulsa County Medical Society, with a separate experienced collection personnel and subsequent increase of collection figures more than 200 per cent within a 90-day period.

(4) Enlargement of The Bulletin to 28 pages with a corresponding record sale of advertising.

(5) The 56th Annual Meeting of the Oklahoma State Medical Association in Tulsa last May, staged almost in its entirety by the Tulsa County Medical Society, was adjudged by a subsequent poll the best Tulsa meeting since before the war.

(6) An effective program of fraudulent practices control.

(7) Marked increase in patronage of the Medical Library and the beginnings of the permanent endowment foundation for the Library.

(8) Creation of mechanism designed to protect against malpractice suits through education of physicians and to aid in a more effective defense of defendant doctors protected under the official London & Lancashire group policy.

(9) Celebration of the tenth anniversary of the Tulsa County Medical Clinic

on November 1, 1949, with civic recognition of the Society's contribution of more than one million dollars in charity services at the Clinic alone during the last ten years.

(10) Continuation of all standard functions of the Society, including an outstanding schedule of scientific programs.

One of the most active of the Society's 22 standing and special committees during the year was Dr. Victor K. Allen's Public Policy Committee, entrusted with the administration of the National Education Campaign of the American Medical Association, the public policy program of the Oklahoma State Medical Association, and the Society's own public relations program. Divided into six subcommittees, each with a particular function or phase of activity, the Committee did much to bring to public attention the evils of a socialized state and compulsory federal health insurance. Dr. Maurice J. Searle's Sub-Committee on Public Speaking arranged for more than fifty speaking engagements by doctors and lay persons before civic and professional groups, many of which subsequently approved resolutions condemning state medicine. Dr. John G. Matt's Sub-Committee on Press Relationships established some very friendly editorial contacts with Tulsa newspapers and publications which was reflected in the favorable content of news, feature, and editorial material. A full-page advertisement which the Society inserted in the Tulsa World-Tribune "Progress Edition" of November 7, 1949, brought many splendid compliments. Financed by voluntary contributions, it was termed by American Medical Association officials as a "splendid piece of public relations which should be emulated by every county medical society in the United States." Accurate medical reporting and excellent medical news coverage was recorded throughout the year. Dr. Robert E. Funk's Sub-Committee on Radio arranged and

supervised four sustaining medical series on Tulsa radio stations as well as several intermittent individual programs on pertinent medical subjects. These were heard on KTUL, KOME, KAKC, and KWGS. Possibilities for a television show are now being investigated. Dr. Edward L. Moore's Sub-Committee on Visual Education handled the educational booth at the Tulsa State Fair in September, with the assistance of the Ladies Auxiliary,

---

### THE BLUE RIBBON AWARDS

An Executive Secretary has been defined as a person employed to create situations and maintain tension. In line with that definition your Executive Secretary would like to seize the opportunity of doing both by nominating his choices for the 1949 Blue Ribbon Awards For Achievement In Tulsa County Medical Society Activities. Without intending to overlook any good work of an individual member, here are the selections:

*Dr. John E. McDonald*, for conscientious administration of a progressive program and for his tireless interest as President of the Society.

*Dr. John G. Matt*, for his work as Secretary-Treasurer and for doing the worrying of the Society.

*Dr. Marshall O. Hart*, for his courage and devotion to duty as Chairman of the Fraudulent Practices Committee.

*Dr. W. A. Showman*, for his services in directing the 56th Annual Meeting of the Oklahoma State Medical Association.

*Dr. Victor K. Allen*, for the remarkable record of his Public Policy Committee.

*Dr. James Stevenson*, for his tireless efforts as Delegate to the American Medical Association.

*Dr. Felix R. Park*, for a fine job as Chairman of the Tulsa County Red Cross Blood Center Committee.

*Dr. Paul Grosshart*, for reorganization of the Medical Credit Bureau.

*Dr. Robert E. Funk*, for the work of the Sub-Committee on Radio.

*Dr. Homer A. Ruprecht*, for construction of the scientific program of the 56th Annual Meeting of the Oklahoma State Medical Association.

distributed 25,000 pieces of literature. His group also laid the groundwork for showings of two new documentary medical motion pictures in Tulsa, promoted the wide display of the Fildes paintings in Tulsa business firm showrooms. Dr. J. D. Shipp's Sub-Committee on Professional Relationships set up splendid cooperative relations with the allied medical professions, embarked on a program of doctor education. Dr. Fred E. Woodson's Sub-Committee on Legislation kept tabs on legislative progress in Washington. The lengthy report of the Public Policy Committee on file in the Executive Offices will be of interest to all members as an example of coordinated Society activity in a common objective.

The success of the Tulsa County Red Cross Blood Center, which opened January 12, 1949, after more than a year of planning by the two sponsors, the Tulsa County Chapter of the American Red Cross and the Tulsa County Medical Society, appears to be completely established. Thanks to Dr. Felix R. Park's hard-working Committee, the Center's problems of policy were quickly ironed out to the mutual satisfaction of the sponsors and participating hospitals. A complete report of the Blood Center's first year of activity appears on Page 15 of the December, 1949, issue of The Bulletin.

The progress of the Library, including preliminary steps in the formation of a permanent endowment fund, continued at a marked pace. The complete report of Dr. Morris B. Lhevine's fine Committee will be found on Page 9 of this issue of The Bulletin.

The reorganization of the Medical Credit Bureau in September brought about a much-needed division of work in the Executive Offices. The employment of a separate personnel to handle exclusively the functions of the Bureau freed the Executive Secretary for other duties in connection with the Society's regular program of activities. Monthly collections were doubled in the first month and tripled at the end of ninety days with many new clients being added to the Bureau's growing list of patrons. Indications are for further expansion in

(Continued on Page 18)



# ✓ ***Check These Four Services Individually Tailored To The Needs Of The Modern Doctor Of Medicine And His Patient***

## ✓ **PRESCRIPTIONS**

Accurately and reliably compounded by our staff of experienced registered pharmacists, the keystone of our reputation for integrity and service.

## ✓ **PHARMACEUTICALS**

The latest in biologicals and drugs, as well as the standard products of America's reputable manufacturing drug firms, are to be found in quantity on our shelves at all times.

## ✓ **SURGICAL AND SICKROOM SUPPLIES**

Our complete surgical and sickness supply shop offers nationally known products to fill the needs of every doctor and his patients, sold under the supervision of trained, experienced personnel.

## ✓ **THE CLEARSTONE HEARING AID**

A new step forward in sound conduction as this modern comfortable hearing aid wins hundreds of new friends. Sold exclusively in Tulsa by the Medical Arts Prescription Shop.

*Featured By Tulsa's Complete  
Medical Service Shop*

# **MEDICAL ARTS PRESCRIPTION SHOP**

**In The Medical Arts Building**

**Sixth at Boulder, Tulsa**

**Orville L. Prather  
Manager**

**Telephone 4-0121**

D. L. KINCAID  
(Kinney)

RAYMOND EWERS

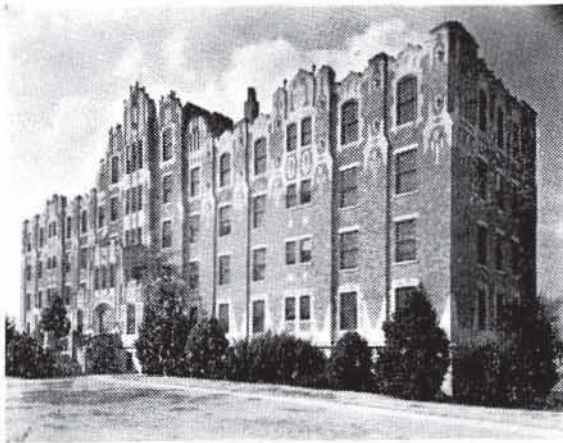
# *Professional* **DRUG SHOP**

**An Ethical Prescription Pharmacy**

**2110 South Utica**

**Telephone 3-8169**

*City Wide Delivery Service*  
*Two Miles Closer to Southeast Tulsa*



*One of Oklahoma's  
finer hospitals*

**1653 East Twelfth St.**

**Telephone 3-2131**

**TULSA, OKLAHOMA**

# HILLCREST MEMORIAL HOSPITAL



# JANUARY MEDICAL CALENDAR

**SUNDAY, January 1st:**

Happy New Year!

**MONDAY, January 2nd:**

Hillcrest Hospital Staff Meeting.

Annual membership dues to the Tulsa County Medical Society due and payable on this date.

**WEDNESDAY, January 4th:**

Board of Trustees Meeting, Tulsa County Medical Society, 1202 Medical Arts Building, Tulsa, 1:00 P.M.

**SATURDAY, January 7th:**

Medical Broadcast, "The Role Of The Diagnostician In Modern Medicine," Radio Station KOME, 6:15 P.M. Speaker, Dr. N. C. Gaddis.

**MONDAY, January 9th:**

Scientific Program, Tulsa County Medical Society, The Mayo, 8:00 P.M. Subject: "Greetings, Dr. Gloat — A Summons." Speaker, Dr. Marshall O. Hart.

**WEDNESDAY, January 11th:**

Bulletin Committee Meeting, Tulsa County Medical Society, 1202 Medical Arts Building, Tulsa, 1:00 P.M.

**SATURDAY, January 14th:**

Medical Broadcast, "Problems Of Good Eyesight," Radio Station KOME, 6:15 P.M. Speaker, Dr. Donald V. Crane.

**MONDAY, January 16th:**

St. John's Hospital Staff Meeting.

Copy deadline for the February issue of The Bulletin.

**WEDNESDAY, January 18th:**

Constitution & By-Laws Committee Meeting, Tulsa County Medical Society, 1202 Medical Arts Building, Tulsa, 1:00 P.M.

**SATURDAY, January 21st:**

Medical Broadcast, "Tulsa's Mental Hygiene Clinic," Radio Station KOME, 6:15 P.M. Speaker, Dr. Richard Apffel.

**MONDAY, January 23rd:**

Scientific Program, Tulsa County Medical Society, The Mayo, 8:00 P.M. Subject: "The Importance Of Neurogenic Pain To The Surgeon And The Internist." Speaker, Dr. R. Lyle Motley, Memphis, Tennessee.

**WEDNESDAY, January 25th:**

Board of Trustees Meeting, Tulsa County Medical Society, 1202 Medical Arts Building, Tulsa, 1:00 P.M.

**SATURDAY, January 28th:**

Medical Broadcast, "Socialized Medicine In Great Britain," Radio Station KOME, 6:15 P.M. Speaker, Dr. A. Ray Wiley.

*Happy New Year*

**T. ROY  
BARNES  
DRUGRY**

603 S. Boulder



**MEDICAL SERVICE SOCIETY OF AMERICA**

Membership Roster, Tulsa Chapter

<i>Name:</i>	<i>Representing:</i>	<i>Telephone:</i>
Cecil O. Butler	Sharpe & Dohme	6-6418
William A. Cates	E. R. Squibb Co.	7-1267
William L. Davis	Ayerst, McKenna & Harrison	7-4045
C. R. Doran	Lakeside	Claremore
Carl Gibson	William S. Merrill Co.	4-0956
R. C. Gooch	Abbott Laboratories	9-4389
J. L. Hedges	Massengill	6-8538
A. L. Kessler	Pitman-Moore	7-4974
Dave Lankford	Lederle	7-3723
Joe Loudonback	Flint-Eaton	7-1418
R. Wayne Morrow	Bauer & Black	2-0598
J. D. Nance	E. R. Squibb Co.	8575
Dan P. Payne	William S. Merrill Co.	6-5643
Tom Sellers	G. D. Searle	4-6991
Preston Walker	Upjohn	7-6464
J. B. Waters	Winthrop-Stearns	9-4045





### MEMPHIS INTERNIST TO SPEAK HERE JANUARY 23RD

Dr. R. Lyle Motley, Associate Professor of Medicine at the University of Tennessee School of Medicine, Memphis, will be guest speaker for the Tulsa County Medical Society on Monday, January 23, 1950. His subject will be "The Importance of Neurogenic Pain to the Surgeon and Internist."

Opening the Society's 1950 schedule of scientific programs on Monday, January 9, will be Dr. Marshall O. Hart, Tulsa general practitioner, who will speak on the subject, "Greetings, Dr. Gloat—A Summons." This is a special program devoted to a discussion of medical malpractice, prepared at the request of the Insurance Committee of the Society. Dr. Hart has had a special interest in this subject for many years and is qualified to speak as a member of the Oklahoma State Bar Association.

Nationally known in medical circles, Dr. Motley is head of the Memphis clinic which bears his name. A graduate of Vanderbilt University School of Medicine, he is now director of postgraduate training of the resident staff at Baptist Memorial Hospital, Memphis, a consultant in medicine at the John Gaston Hospital of Memphis, a diplomate of the American Board of Internal Medicine, and a Fellow of the American College of Physicians.

## A BIG TIME-SAVER FOR EVERY DOCTOR



This handy booklet for new mothers was "built to doctors' orders". It contains blank forms for filling in your instructions and formulas.

It provides a permanent case-history record. A memo will bring you a sample...or as many as you want for your daily practice... without obligation.

Many doctors are prescribing "Daricraft Homogenized Evaporated Milk". It is always uniform, safe, sterilized, easy to digest, and high in food value and minerals. Daricraft contains 400 U. S. P. units of Vitamin D per pint.



PRODUCERS CREAMERY CO., SPRINGFIELD, MO.

**ANNUAL REPORTS***(Continued from Page 12)*

1950.

The Tulsa County Medical Clinic completed ten years of community service on November 1, 1949, receiving wide public recognition as an efficient instrument of indigent medical care. Members of the Society have given a minimum of one million dollars of medical talent to the Clinic in that period in addition to the savings to the taxpayers effected by the concentration of the indigent care facilities.

Scientific medical study was represented in sixteen meetings of the Society for scientific programs, the annual meeting of the Oklahoma State Medical Association, and the postgraduate medical study program concluded last Spring. Speakers included the University of Chicago's ace physiologist, world-famous Dr. A. J. Carlson, the eminent Chicago surgeon, Dr. Lester R. Dragstedt, and London's eminent cancer pathologist, Dr. Rupert Willis. Members of the Society appeared on half of the programs.

The 56th Annual Meeting of the Oklahoma State Medical Association in Tulsa last May 15-18 was handled almost entirely by Dr. W. A. Showman's Annual Meeting Committee including the sale and distribution of booth space, hotel arrangements, construction of the scientific program, pre-convention publicity, etc. It was generally adjudged one of the best meetings since before the war, drawing a near record crowd.

Other Society activities of the year in brief: Splendid work by Dr. G. H. Henry's Bulletin Committee in enlarging *The Bulletin* and expanding advertising income more than \$800.00 in excess of original estimates; an effective program of fraudulent practices control in Tulsa County by Dr. Marshall O. Hart's Fraudulent Practices Committee (reported in detail at the annual meeting); Dr. H. J. Rubin's Publicity Committee developed an interesting plan to cope with the problem of night calls, soon to be presented to the Society; efforts of Dr. H. A. Ruprecht's Housing Committee to find a permanent home for the Society; co-ordination of the Society's insurance activities by Dr. Frank A. Stuart's Insurance

Committee; a widespread program of activity by Dr. Frank J. Nelson's Public Health Committee, looking towards solution of public health problems in Tulsa an especially fine program of cancer control and treatment by Dr. Ralph A. McGill's Cancer Committee; social events handled by Dr. E. Malcolm Stokes Entertainment Committee included two golf tournaments and the annual Christmas party; and handling of problems of ethics by Dr. Victor K. Allen's Ethics Committee.

**ELECTION OF OFFICERS***(Continued from Page 7)*

ciety from 1944 to 1948, served as Vice-President last year, and has been a member of the House of Delegates for more than ten years. Dr. Showman was also responsible for the successful annual meeting of the Oklahoma State Medical Association in Tulsa last year and was also convention chairman for the meeting of 1945. He is presently Chairman of the Section on Dermatology of the Southern Medical Association, a diplomate of the American Board of Dermatology, and widely known for his scientific presentations before the American Medical Association and other groups.

Dr. Fred E. Woodson, Tulsa anesthesiologist, assumed office on January 1, 1950 and announced that annual committee assignments would be made early in the month and published in the February issue of *The Bulletin*. "It is my hope that the well-rounded program of Society activities conducted during the last several years may continue throughout 1950. I am counting on the continuation of the fine spirit of cooperation shown by the membership in the prosecution of our program, and I hope to bring more and more members of the Society into active participation," Dr. Woodson said.

For many years a leader in affairs of Hillcrest Hospital of Tulsa, Dr. Woodson is now a member of the Board of Trustees of the Southern Medical Association and is Chairman of the Section on Anesthesia of that organization. He has also been prominent in the Oklahoma Medical Research Foundation project and in Alumni Association activities of the University of Oklahoma School of Medicine.



# Evidence that Pyribenzamine aborts the Common Cold

Of three antihistaminics tested in the common cold, Gordon<sup>1</sup> found Pyribenzamine "equally or superiorly effective in controlling symptoms and producing fewer and less severe side reactions."



## Results of Treatment of the Common Cold with Pyribenzamine

Investigator	Number Treated	Benefited	%
Gordon <sup>1</sup>	252*	224	89
Murray <sup>2</sup>	494	397	80
Brewster <sup>3</sup>	466*	348	75

\*Includes patients treated with other antihistaminics

1. Gordon, J. S.: Laryngoscope, 58:1265, Dec. 1948

2. Murray, H. C.: Indus. Med. 18:215, May 1949

3. Brewster, J. M.: U. S. Nav. M. Bull. 49:1, Jan.-Feb. 1949

## THREE THERAPEUTIC APPROACHES



### 1. Pyribenzamine-Ephedrine for systemic treatment

Each tablet contains 25 mg. of Pyribenzamine hydrochloride and 12 mg. of ephedrine sulfate. This combination synergistically promotes decongestion of the entire respiratory tract including the nasopharyngeal mucosa.



### 2. Pyribenzamine Nebulizer to control nasal symptoms

Immediate relief of allergic symptoms with no systemic side effects. Pocket-size nebulizer distributes a mist of minute droplets of Pyribenzamine hydrochloride Nasal Solution 0.5% throughout nasal passages.



### 3. Pyribenzamine Expectorant to control cough

Each teaspoonful contains 30 mg. of Pyribenzamine citrate, 10 mg. of ephedrine sulfate and 80 mg. of ammonium chloride. Highly effective for relief of cough. Blocks congestive and spasmogenic effects of histamine, shrinks respiratory mucosa and liquefies bronchial secretions.

# Ciba

PHARMACEUTICAL PRODUCTS, INC., SUMMIT, NEW JERSEY

PYRIBENZAMINE (brand of tripeleminamine) T. M. Reg. U. S. Pat. Off. 2/1556M

## NEW MEMBERS

The following physicians were elected to membership in the Tulsa County Medical Society at the regular meeting of Monday, December 12, 1949:

**Howard M. Cohenour, M. D.** 914 Medical Arts Building, Tulsa. Medical Degree, University of Tennessee College of Medicine, 1941. Interned DePaul Hospital, St. Louis, Mo. United States Army

Medical Corps, 1943-46; resident in urology, University of Kansas Medical Center, Kansas City, Kansas, 1946-49. Specialty, Urology. Recommended by Dr. H. D. Murdock and Dr. Joseph Fulcher.

**John F. Gray, Jr., M. D.** 405 Medical Arts Building, Tulsa. Medical Degree, Medical School of State University of Iowa, 1943. Interned Vancouver General Hospital, Vancouver, B.C., Canada. United States Army Medical Corps, 1943-46; member of the staff, Institute of Living, Hartford, Connecticut, 1946-49. Specialty Neuropsychiatry. Recommended by Dr. Dr. S. C. Shepard and Dr. J. W. Rogers.

## HARVARD DRUG STORE

B. C. SHINN, Owner

PHONE 6-2186

*The  
Suburban  
Prescription  
Store*

FREE  
PRESCRIPTION  
DELIVERY

3244 E. 11th St.  
Tulsa

It's a daughter for DR. and MRS. HAROLD L. BEDDOE, born November 28, 1949. Congratulations!

Another on the Stork Club list! DR. and MRS. SOL WILNER, a boy, born December 5, 1949.

DR. HUGH B. MITCHELL has removed his practice to Richton, Mississippi.

It's a boy, David Clarke, for DR. and MRS. HAROLD J. BLACK, born December 13, 1949. Congratulations.

DR. JAMES L. MINER has closed his office at 1415 East 15th Street and retired from the practice of medicine.

DR. JOHN E. McDONALD has been named to the Public Policy Committee of the Oklahoma State Medical Association to succeed DR. C. G. STUARD, resigned.

DR. FRED E. WOODSON has returned from a business trip to New York, N. Y.

DR. D. W. LeMASTER is back at his office after a brief illness.

## AKIN'S

*We Specialize*

In Foods For Every Kind of Diet

*Our Health Bakery*

A full line of baked goods made from Whole Grain Flour, Soy Flour, Starch, Restricted Flour, Whole Wheat Flour, Rye Flour, and Corn Meal. Wheat Germs, Soy Oil, Honey, and Sea Salt used in all of our bakery products.

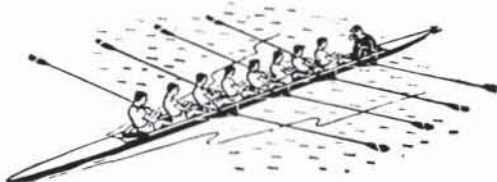
LET US FILL YOUR DIETS

722 South Boulder

Phone 7711



# CONCERTED ACTION



# WITH Solanital Dorsey

SEDATIVE - ANTISPASMODIC

AS A SEDATIVE-ANTISPASMODIC, Solanital exceeds in therapeutic effectiveness even much larger doses of any of its component drugs. Synergistic action among the properly proportioned alkaloids produces *more comprehensive and lasting relief*, while minimizing the side effects of any single ingredient.

Thus the concerted action of several drugs makes Solanital a highly effective agent for antispasmodic and sedative therapy in:

- Gastro-intestinal disorders**
- Genito-urinary infection • Cardiac conditions**

Solanital is often effective also in alcoholism and delirium tremens, menopausal disturbances of spastic nature, parkinsonism, and for prevention of sea, car or air sickness.

ELIXIR  
CAPSULE  
TABLET

## Solanital Dorsey

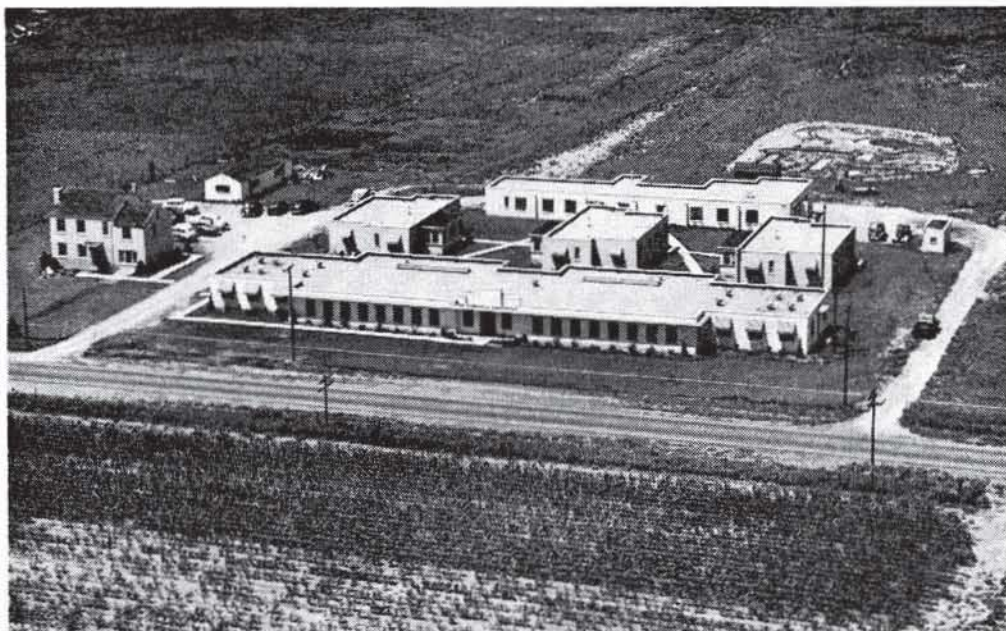
**EACH FLUID OUNCE ELIXIR CONTAINS:**

Phenobarbital .....	2 gr.
Extract Hyoscyamus .....	1/2 gr.
Extract Belladonna .....	1/3 gr.
Hyoscyamine Sulfate .....	1/200 gr.
Atropine Sulfate .....	1/130 gr.
Scopolamine Hydrobromide .....	1/400 gr.
Alcohol .....	20%

*Supplied in Pints and Gallons*

THE SMITH-DORSEY COMPANY • LINCOLN, NEBRASKA  
BRANCHES AT LOS ANGELES AND DALLAS

MANUFACTURERS OF AL-SI-CAL POWDER • DORSEY CAL-VATINE TABLET • DORSEY



## THE SPENCER ROAD SANITARIUM

NORTHEAST TWENTY-THIRD STREET AND SPENCER ROAD

*Coyne H. Campbell, M.D., F.A.C.P., F.A.P.A., Medical Supt.*

Route 4, Box 65

Oklahoma City, Okla.

# ST. JOHN'S HOSPITAL

*A Leading  
Institution  
In  
Oklahoma  
Medicine*

1923 SOUTH UTICA  
TULSA, OKLAHOMA  
TELEPHONE  
6-2161



**DICK KELLO**

Offers  
Prompt Motor Delivery  
Of Your Prescriptions

Telephone 6-2156

**BALL DRUG STORE**  
College at Admiral

# DAIRY COUNCIL OF TULSA

*Promoting health and human welfare through  
knowledge of milk and milk products*

312 WRIGHT BUILDING

TULSA 3, OKLAHOMA

**Telephone 4-8280**

*Affiliated With National Dairy Council*



# *Clinical Background is the Prescriber's BEST Safeguard*



## **TRI-CALSATE**

has been successfully used in the peptic ulcer syndrome for more than 21 years.

### ✓ **Check These 7 Important Features:**

- ✓ **1** Tri-Calsate is a safe neutralizer of gastric HCl and promptly inhibits pepsin activity.
- ✓ **2** Tri-Calsate does not cause acid rebound.
- ✓ **3** Tri-Calsate is palatable without artificial flavoring and can be advantageously prescribed in water or milk.
- ✓ **4** Tri-Calsate is so buffered as to minimize the possibility of alkalosis.
- ✓ **5** There is no evolution of carbon dioxide during the reaction in the stomach, eliminating distress from distention and belching.
- ✓ **6** It does not injure the kidneys.
- ✓ **7** It does not make the gastric contents alkaline.

*Available on Rx in 4½ oz. & 18 oz. bottles. Write on your letterhead  
for samples and literature.*

**F. H. PAXTON & SONS, INC.**

Manufacturing Pharmaceutical Chemists

469 E. Ohio St.

Chicago 11, Ill.

## Professional Directory

**VICTOR K. ALLEN, M. D., F.A.C.S.**  
 Diplomate American Board of Surgery  
 Diseases of the Rectum  
 1001 Medical Arts Bldg.                      Tulsa

**S. Y. ANDELMAN, M.D.**  
 Diagnosis & Treatment of  
 Arthritis & Rheumatic Diseases  
 1611 South Boston                      Ph. 2-3885

**ROBERT L. ANDERSON, M.D.**  
 Thoracic Surgery, Bronchoscopy,  
 and Esophagoscopy  
 807 Medical Arts Bldg.                      Tulsa

**B. H. BLOCKSOM, M. D., F.A.C.S.**  
 Diplomate, Boards of Surgery, Urology  
 Practice Limited to Urology  
 901 Medical Arts Bldg.                      Ph. 54-1888

**MANUEL BROWN, M. D.**  
 Allergic Diseases  
 1619 E. 15th Street                      Ph. 5-2552

**PAUL E. CRAIG, M.D.**  
 General Surgery  
 411 Daniels Bldg.                      Ph. 4-9674

**SAMUEL E. FRANKLIN, M. D.**  
 General Surgery  
 1619 E. 15th Street                      Ph. 3-2109

**ROBERT E. FUNK, M.D.**  
 Practice Limited to Internal Medicine  
 212 Medical Arts Bldg.                      Tulsa

**N. C. GADDIS, M.D.**  
 Diagnosis & Internal Medicine  
 Special Attention to Lung Diseases  
 1530 South Peoria St.                      Tulsa

**C. E. GILLILAND, M.D.**  
 Practice Limited to Internal Medicine  
 Suite 210 Court Arcade Bldg.  
 Tulsa, Oklahoma

**HARRY GREEN, M.D.**  
 Diseases of the Skin  
 X-Ray & Radium Therapy  
 311 Medical Arts Bldg.                      Ph. 4-7585

**JAMES W. KELLEY, M.D.**  
 Plastic and Reconstructive Surgery  
 206 Philtower Bldg.                      Tulsa

**A. T. KORNBLEE, M.D.**  
 Practice Limited To Skin Diseases  
 Diplomate, American Board of  
 Dermatology & Syphilology  
 916 Medical Arts Bldg.                      Tulsa

**WALTER S. LARRABEE, M.D.**  
**DELMAS B. JONES, M.D.**  
 X-Ray Diagnosis & Therapy  
 Radium Therapy  
 411 Medical Arts Bldg.                      Ph. 4-3111

**E. N. LUBIN, M.D.**  
 Genito-Urinary Diseases  
 1106 Medical Arts Bldg.  
 Office Ph. 3-6008                      Res. Ph. 7-4388

**JAMES D. MARKLAND, M.D.**  
 Allergy  
 411 Medical Arts Bldg.                      Ph. 4-3111

**RALPH A. MCGILL, M.D., F.A.C.S.**  
 Surgery-Radium  
 1010 Medical Arts Bldg.                      Ph. 4-4215



# Professional Directory

<p><b>EDWARD L. MOORE, M.D., F.A.C.S.</b>                  Surgery Only                  215 Braniff Bldg.                  Ph. 3-4789                      Res. Ph. 7-1623</p>	<p style="text-align: center;"><b>THE ORTHOPEDIC CLINIC</b></p> <p>619 South Main Street                      Tulsa                  Practice Limited To Bone &amp; Joint Surgery  <b>JOHN E. McDONALD, M.D.</b>  <b>FRANK A. STUART, M.D.</b>  <b>JOHN C. DAGUE, M.D.</b></p>
<p style="text-align: center;"><b>IRON H. NELSON, M.D.</b>                  Clinical and Surgical Pathology                  1107 Medical Arts Bldg.                      Tulsa</p>	<p style="text-align: center;"><b>R. C. PIGFORD, M.D., F.A.C.P.</b>                  American Board of Internal Medicine                  Cardiovascular Diseases                  203 Court Arcade Bldg.                      Ph. 3-8860</p>
<p style="text-align: center;"><b>L. C. NORTHRUP, M.D., F.I.C.S.</b>                  Gynecology &amp; Obstetrics                  1307 S. Main                      Ph. 3-0151</p>	<p style="text-align: center;"><b>SIMON POLLACK, M.D., D.A.B.R.</b>                  Diagnostic and Therapeutic                  Radiology                  316 Braniff Bldg.                      Ph. 2-7517</p>
<p style="text-align: center;"><b>HERBERT S. ORR, M.D.</b>                  Surgery and Obstetrics                  1307 S. Main                      Ph. 4-2658                  Car Phone ZF8-2724</p>	

## SPRINGER CLINIC

604 South Cincinnati

**Tulsa**

**Telephone 5-6621**

**Medicine**

D. O. Smith, M.D.  
 E. G. Hyatt, M.D.  
 H. A. Ruprecht, M.D.  
 Albert W. Wallace, M.D.  
 Vincel Sundgren, M.D.

**Neurology and Psychiatry**

Tom R. Turner, M.D.  
 Joe E. Tyler, M.D.

**Neurosurgery**

Averill Stowell, M.D.  
 Robert A. Hayne, M.D.

**Pediatrics**

G. R. Russell, M.D.

**General Surgery**

Carl J. Hotz, M.D.  
 William Pratt, M.D.

**Urology**

K. F. Swanson, M.D.  
 Charles A. Hulse, M.D.

**Eye, Ear, Nose and Throat**

Donald L. Mishler, M.D.

**Orthopedic Surgery**

Charles E. Brighton, M.D.

**Anesthesia**

M. R. Steel, M.D.

## Professional Directory

<p><b>J. L. RICHARDSON, M.D.</b> Orthopedic &amp; Traumatic Surgery 19 West 10th St.                      Tulsa</p>	<p><b>CHARLES G. STUARD, M.D.</b> Ophthalmology 221 Court Arcade Bldg.      Ph. 4-3435</p>
<p><b>HERSCHEL J. RUBIN, M.D.</b> Diseases of Infants &amp; Children 1619 East 15th St.                      Tulsa</p>	<p><b>LEON H. STUART, M.D., F.A.C.R.</b> X-Ray Diagnosis 1107 Medical Arts Bldg.                      Tulsa</p>
<p><b>PHILIP M. SCHRECK, M.D.</b> Internal Medicine 201-202 Medical Arts Bldg.                      Tulsa</p>	<p><b>JAMES B. THOMPSON, M. D.</b> General Surgeon Diplomate, American Board of Surgery 1001 Medical Arts Bldg.      Ph. 3-3318</p>
<p><b>MAURICE J. SEARLE, M.D.</b> Pediatrics Diplomate, American Board of Pediatrics 512 Medical Arts Bldg.                      Tulsa</p>	<p><b>DRS. TRAINOR &amp; FIRST</b> Cardiology &amp; Electrocardiology <b>W. J. TRAINOR, M.D.</b> <b>SAFETY R. FIRST, M.D.</b> 1011 Medical Arts Bldg.      Ph. 5-7545</p>
<p><b>J. D. SHIPP, M.D.</b> Surgery and Diseases of the Colon and Rectum 316 Medical Arts Bldg.                      Tulsa</p>	<p><b>WILLIAM RAY TURNBOW, M.D.</b> Diagnostic &amp; Therapeutic Blocks 2112 W. 41st St.                      Ph. 5-0653</p>
<p><b>W. A. SHOWMAN, M.D.</b> Dermatology 408 Medical Arts Bldg.      Ph. 3-7789</p>	<p><b>ARNOLD H. UNGERMAN, M.D.</b> <b>MILFORD S. UNGERMAN, M.D.</b> Diagnosis &amp; Treatment of Nervous and Mental Diseases 708 Medical Arts Bldg.      Ph. 2-3151</p>
<p><b>F. D. SINCLAIR, M.D., F.A.C.S.</b> Certified American Board of Obstetrics &amp; Gynecology 307 Medical Arts Bldg.      Ph. 5-6566</p>	<p><b>R. M. WADSWORTH, M.D.</b> Pediatrics 1445 S. Quaker                      Ph. 3-4300</p>
<p><b>WADE SISLER, M.D.</b> Orthopedic Surgery 8th &amp; Elgin                      Ph. 5-3123</p>	<p><b>J. E. WALLACE, M.D.</b> Gynecology 914 Medical Arts Bldg.      Ph. 2-6501</p>





For  
**RADIANT HEALTH  
BUOYANT ENERGY  
SOUND BONES  
BEAUTIFUL TEETH**

We Recommend  
**Homogenized  
'VITAMIN D' MILK**

Fortified With 400 U.S.P. Units  
Vitamin D Per Quart, By Vitex Process

**Beatrice Foods Co.**

215 North Denver

Telephone 4-2471

## PROFESSIONAL TRADITION

In compounding a prescription, as in all professional work, experience is an important, even priceless, ingredient.

*Be Certain with Curtain*

**CURTAINS PRESCRIPTION LABORATORY**

SIXTH AND BOULDER

PHONE 4-7116

*Across the Street North From Medical Arts Bldg.*

Sec. 34.66 P. L. & R.

U. S. POSTAGE

**PAID**

TULSA 3, OKLA.

PERMIT No. 13

(Return Postage Guaranteed)

## **COURTRIGHT IN THE COURT ARCADE**

Tulsa's only "*Ophthalmic - Dispenser*" - - - manufacturing and fitting eye-glasses exclusively for patients of the Eye-Physician (M. D.) - - - visit our complete and modernlv equipped laboratory.

Res. Phone 6-1289

25 YEARS EXPERIENCE

Office Phone 4-1613

### **MERKEL X-RAY CO.**

*Exclusive Distributors For—*

**Westinghouse X-Ray Equipment**

**Physical Therapy Equipment**



**Complete Stock  
X-Ray and Physical Therapy  
Supplies**



**TULSA**

1114 S. Boulder

Tel. 2-4897

**OKLAHOMA CITY**

1130 N. Hudson

Tel. 2-3522

### **MID-CONTINENT SURGICAL SUPPLY CO.**

**Hospital and Physicians  
Equipment and Supplies  
X-Ray Equipment**

*The Complete  
Surgical Supply Store*

We carry a complete stock of instruments, rubber goods, surgical dressings, sutures, laboratory stains or reagents, enamel-ware, examining room furniture, wheel chairs, supports and trusses.

PHONE 2-8169

TULSA

610 SOUTH BOSTON

## **Commercial Printing Company PRINTERS**

We Print the Bulletin

**OFFICE AND PLANT AT 417 EAST 3RD STREET**

R. W. (Bob) HUDSON

Publications, Programs  
Advertising Literature,  
Office and Factory Forms  
Fine Personal Stationery

TELEPHONE 2-2450