

LIBRARY
TULSA COUNTY MEDICAL SOCIETY



THE BULLETIN

of the Tulsa County Medical Society

Build Tulsa



IN THIS ISSUE



Report From Atlantic City
AMA's 98th Annual Meeting



Tulsa Medical Directory



Tulsa County Medical Society
Annual Membership Roster



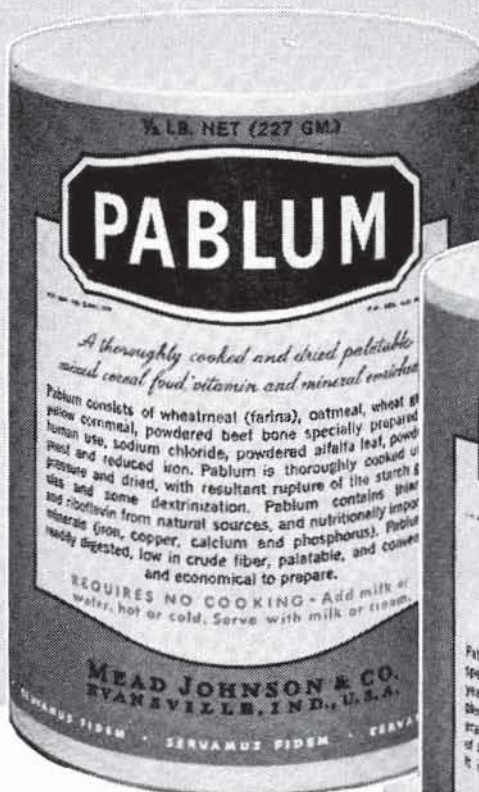
President's Page

It's Your
RED CROSS
BLOOD CENTER
Encourage Donors

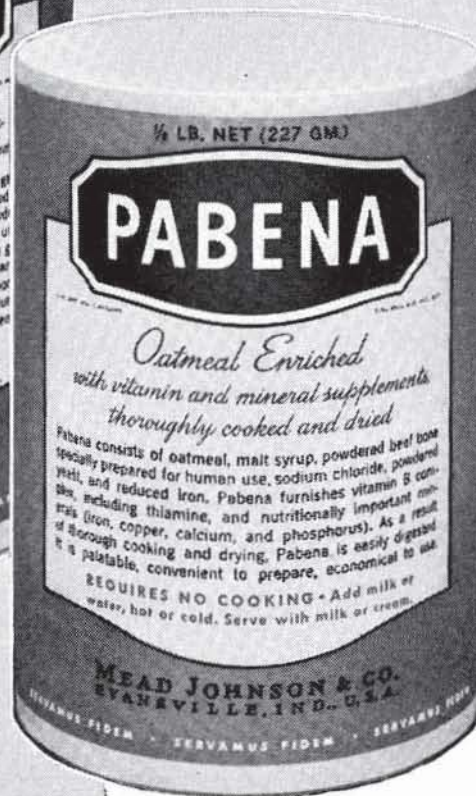
July, 1949

Vol. 15

No. 7



There is only one Pablum. It was originated in 1932 by and is made by Mead Johnson & Company. "Pablum" is the registered trademark of Mead Johnson & Company for this pioneer vitamin-and-mineral-enriched precooked mixed cereal food.



Pabena was introduced by Mead Johnson & Company in response to numerous requests by the medical profession. "Pabena" is Mead Johnson's registered trademark for this vitamin- and - mineral - enriched precooked oatmeal food.

MANY PHYSICIANS RECOGNIZE MEAD JOHNSON AND COMPANY'S PIONEER EFFORTS IN THE FIELD OF INFANT CEREALS BY SPECIFYING "PABLUM"—AND ALSO THE NEW PABLUM-LIKE OATMEAL CEREAL KNOWN AS "PABENA"



even after **40**, a woman's work is never done...

Dishes, dustpans, a thousand details...the three "d's" of household drudgery...are challenge enough at any age, but a stack of dinner dishes can look mountain high to the woman in the menopause. This is a disquieting aspect of the daily life of such patients that physicians can bring into proper perspective with "Premarin."

"Premarin" therapy, it has been found, has in it a certain "plus" that produces a sense of well-being in most women. "Premarin" quickly relieves the symptoms of the menopause. It is orally active, and is rapidly absorbed from the intestine.



While sodium estrone sulfate is the principal estrogen in "Premarin," other equine estrogens...estradiol, equilin, equilenin, hippulin...are probably also present in varying amounts as water soluble conjugates.

"PREMARIN" 

ESTROGENIC SUBSTANCES (WATER SOLUBLE)
also known as CONJUGATED ESTROGENS (equine)

Ayerst, McKenna & Harrison Limited 22 East 40th Street, New York 16, New York
4901



Your Doctors
RIGHT HAND

Thank You, Doctor!

Your good will is appreciated. We shall try to keep it through continued courteous prescription service. Our stock of pharmaceuticals is the largest in Eastern Oklahoma. We welcome your call.

MEDICAL ARTS PRESCRIPTION SHOP

Telephone 4-0121

O. L. Prather, Manager

Drink
Coca-Cola
Delicious and
Refreshing

**THE
DRINK
EVERYBODY
KNOWS**

GETMAN'S

ROY R. GETMAN, Founder



*Sixth and Main Sts.
Phone - 3 6171*

VALUE

There is an old saying "You get what you pay for".

We firmly believe that QUALITY, PROFESSIONAL SKILL and ABILITY, SERVICE—all still mean something.

Like you, we are not in the practice of offering ANY product which does not meet the requirements of the Council on Foods and Medicines of the American Medical Association—for a few cents less than the cost of the accepted product.

FREE DELIVERY NIGHT AND DAY.

WE GIVE S & H GREEN STAMPS

Sponsors of the "Tell Me, Doctor" Radio Broadcasts at 5:15 P.M. each Monday through Friday, KTUL, prepared by The Oklahoma State Medical Association.

CONTENTS

Report From Atlantic City.....	7
Presidents Page	8
Annual Membership Roster	9
Applications Pending	12
Honorary Members	12
Tulsa Medical Directory.....	13
Key to Abbreviations	14
Personals	17

ADVERTISERS

Akins Natural Foods.....	17
Ayerst, McKenna and Harrison.....	3
Ball Drug Company.....	17
Beatrice Foods, Inc	23
Catron Pharmacy	18
Ciba Pharmaceutical Products.....	19
Coca-Cola Bottling Co.	4
Commercial Printing Company.....	24
Courtright Optical Co.....	24
Coyne Campbell Sanitarium.....	16
Curtain's Prescription Laboratory.....	23
Daricraft	18
Dairy Council of Tulsa.....	20
Eli Lilly and Co.....	6
Getman Drug Company	5
Harvard Drug Company.....	22
Hillcrest Hospital	21
Mead Johnson & Company.....	2
Medical Arts Prescription Shop	4
Medical Service Society.....	15
Merkel X-Ray	24
Mid-Continent Co.....	24
F. H. Paxton and Sons.....	22
Professional Drug Co.....	16
Raley Shaddock Pharmacy.....	15
Secretary of Defense.....	21
St. John's Hospital.....	18
T. Roy Barnes Drugry.....	20



comfort

Basic need is met when 'Surfaccaine' (Cyclomethacaine, Lilly) is applied to damaged, irritated, or diseased skin and to rectal or genito-urinary membranes. Sustaining comfort is provided promptly and thoroughly, yet safely, with this new type of surface anesthetic.

Relief from pain usually lasts up to eight hours with 'Surfaccaine.' However, it may be reapplied freely at shorter intervals, if necessary, and over extensive areas. Unlike topical analgesics whose value is sharply limited by high toxicity, 'Surfaccaine' may be used liberally.

It is soothing to the tender skin of infants with diaper rash, to burns that are superficial or deep, to painful hemorrhoids, and to itching skin conditions.

Readily available as:

Ointment 'Surfaccaine,' 1 percent, in 1-ounce tubes with removable, perforated rectal tips and in 1-pound and 5-pound jars

Cream 'Surfaccaine,' 0.5 percent, in 1-ounce tubes and in 1-pound and 5-pound jars

Lotion 'Surfaccaine,' 0.5 percent, in 4-ounce and 1-pint bottles

Suppositories 'Surfaccaine,' 10 mg., in packages of 12 and 100

Suppositories 'Surfaccaine,' 10 mg., and Sulfadiazine, 325 mg., in packages of 12

Suppositories 'Surfaccaine,' 10 mg., and Zinc Oxide, 250 mg., in packages of 12

ELI LILLY AND COMPANY
INDIANAPOLIS 6, INDIANA, U. S. A.

THE BULLETIN

OF THE

TULSA COUNTY MEDICAL SOCIETY

John E. McDonald, M.D., *President*Fred E. Woodson, M.D., *President-Elect*W. A. Showman, M.D., *Vice-President*John G. Matt, M.D., *Secretary-Treasurer*Jack Spears, *Executive Secretary*

Vol. 15

TULSA, OKLAHOMA, JULY, 1949

No. 7

REPORT FROM ATLANTIC CITY

Twenty Thousand Doctors Attend 1949 American Medical Association Meeting. National Education Campaign Well Underway. Dr. Fishbein Dismissed.

The American Medical Association's 98th Annual Meeting in Atlantic City last June 5-10 again ran true to form—a sprawling, often gaudy convention attended by medical doctors from every part of the world. Over 20,000 physicians registered, and with exhibitors and other visitors present the Boardwalk was jammed from end to end, giving the AMA an attendance just a shade under the record Centennial session of 1947 . . . Chief topic of conversation was the abrupt dismissal of Dr. Morris Fishbein, storm center of AMA politics, as Editor of the Journal. Terminating a 34 year tenure for Dr. Fishbein, the Council's recommendation prohibits him from further public appearances, interviews, or writing except on matters of scientific interest . . . The House of Delegates sessions were primarily routine with probably the most important action being the formulation of a set of 20 principles to guide lay-sponsored plans of voluntary health insurance. The AMA made it clear that it was not endorsing such plans, of which there are about 80 in the United States, but was merely passing along the principles to guide local county societies wishing to take such action. Some critics called it a "faint approving nod" to the plans . . . Cooperative plans of community health insurance took a drubbing also, and here again the AMA left the matter up to the local county societies. In all the sessions of the House there was a marked trend away from national policy in favor of grass root control over all medical mat-

ters . . . Progress of the National Education Campaign was generally approved although there is some opposition to use of the Fildes painting in the doctors waiting rooms. Clem Whitaker of the Whitaker and Baxter advertising firm, directors of the campaign, reported that orders for the painting had greatly exceeded expectations with 40,000 doctors having already ordered the painting-poster . . . Whitaker and Baxter, incidentally, make a very favorable impression. Whitaker is a gangling, grayish man with a sincere and straightforward attitude. Miss Baxter, in private life Mrs. Whitaker, is a poised chic woman whose butterfly glasses give her a misleading severity. Both talk well and sincerely, and most delegates came away feeling the campaign was in good hands . . . Tulsa's Dr. James Stevenson as AMA delegate is becoming more and more popular with each session of the House, and new delegate Dr. John F. Burton made a nice impression in his initial bow . . . The Executive Secretaries are growing in number and stature, and the new Council of Medical Society Executives is doing some good organizational work among the group. Many ideas were exchanged, and one that got a lot of attention was a requirement of a New Jersey county society that new applicants must give valid reasons for not making night calls or face rejection by the Board of Censors . . . The AMA, of course, made no breach in its solid opposition to state medicine. It did en-

(Continued On Page 17)

PRESIDENT'S PAGE

The Tulsa County Red Cross Blood Center has now been in operation for six months. During this period the initial problems of operation have been comparatively few, thanks to the careful planning of many months of preparation, and virtually all of these have been solved in a competent and cooperative manner by the Staff and the two sponsoring agencies. The most cordial relationship between the sponsors, the Tulsa County Chapter of the American Red Cross and the Tulsa County Medical Society, has permitted a direct attack upon these problems and the development of a consistent policy in respect to standards of operation. One situation, however, continues to exist and to reflect upon the members of the Tulsa County Medical Society—the failure of recipients to replace blood which has been given to them from the bank. The doctor's position in encouraging and insisting upon such replacements by the patient or his family or friends is well established, and our present low replacement ratio of only 25 per cent is due to a personal neglect of many doctors to accept this responsibility.

The Blood Center, with the concurrence of the staffs of the two major hospitals, will shortly begin to publicize replacement records in an effort to impress upon individual doctors the importance of this responsibility. I feel it would be well for each doctor to avoid any embarrassment to himself by immediately assuming this task. After all, it is nothing more than we did under the private bank system, and with the benefits of the new Blood Center more incentive is present than ever before. I urge your cooperation in this respect with the utmost sincerity.

Sincerely,



President

OFFICIAL MEMBERSHIP ROSTER TULSA COUNTY MEDICAL SOCIETY

ACTIVE MEMBERS

Doctor	Address	Telephone
Adams, George M.,	902 Medical Arts Bldg.	4-9637
Adams, R. M.,	Interstate Oil Pipeline Co., Nat'l Bank of Tulsa Bldg. (Ind)	2-5101
Akins, Jack O.,	1101 Medical Arts Bldg. (U)	5-5646
Allen, Victor K.,	1001 Medical Arts Bldg. (Proc)	3-0858
Andelman, Sumner Y.,	1611 So. Boston (I)	2-3885
Anderson, Robert L.,	807 Medical Arts Bldg. (C&L)	3-0038
Armstrong, O. C.,	902 Medical Arts Bldg.	4-4388
Atchley, Roger Q.,	507 Medical Arts Bldg. (S)	2-2239
Atkins, Paul N.,	1001 Medical Arts Bldg.	3-5295
Atkins, Paul N., Jr.,	210 Braniff Bldg. (S)	2-5159
Barham, J. H.,	Daniel Bldg.	3-9456
Beddoe, Harold L.,	Tulsa Police Dept., 4th & Elgin	5-1211
Berg, Milton L.,	3505 S. Peoria	7-4441
Billington, J. Jeffrey,	706 Medical Arts Bldg.	3-0251
Bivens, William S.,	507 Medical Arts Bldg. (S)	2-2239
Black, Harold J.,	416 Medical Arts Bldg.	4-9332
Blocksom, Berget H.,	901 Medical Arts Bldg. (U)	54-1888
Boone, Wilmot B.,	4117 S. 26th W.	5-0249
Boyd, Hugh,	908 Medical Arts Bldg.	2-8233
Bradfield, Samuel J.,	607 Medical Arts Bldg.	2-2328
Brighton, Charles E.,	Springer Clinic, 604 S. Cincinnati (Orth)	5-7153
Brocksmith, Henry A.,	Court Arcade Bldg. (I)	3-2038
Brogden, James C.,	801 Medical Arts Bldg. (S)	2-2516
Brown, Manuel,	1619 E. 15th (All)	3-2109
Brown, Walter E.,	Glass-Nelson Clinic, 2020 S. Xanthus (R)	7-3341
Browne, Henry S.,	615 Medical Arts Bldg. (U)	2-4515
Bryan, William J.,	801 Medical Arts Bldg. (I)	4-1011
Buchan, William,	203 Braniff Bldg. (S)	2-0228
Caldwell, Charles L.,	115 E. 18th	4-5651
Calhoun, C. E.,	Sand Springs, Oklahoma	S. S. 36
Calhoun, Walter H.,	1104 Medical Arts Bldg.	4-6233
Carney, Andre B.,	Tulsa Clinic, 915 S. Cincinnati (S)	4-0177
Chalmers, J. S.,	Sand Springs, Oklahoma (Ind)	S.S. 100
Charbonnet, P. N.,	Oklahoma Bldg. (Ob-Gyn)	3-1155
Childs, J. W.,	501 Medical Arts Bldg.	4-6725
Coulter, Thomas B.,	1011 Medical Arts Bldg.	3-9963
Craig, Paul E.,	411 Daniel Bldg.	4-9674
Crane, Donald V.,	1116 Medical Arts Bldg. (Oph)	4-C684
Crawford, William S.,	Carter Oil Co., Nat'l Bank of Tulsa Bldg. (Ind)	2-6101
Dague, John C.,	412 Tri-State Insurance Bldg. (Orth)	2-9273
Daily, Raymond E.,	Bixby, Oklahoma	
Davis, Arthur H.,	710 Medical Arts Bldg. (EENT)	2-3045
Davis, George M.,	Bixby, Oklahoma	
Davis, Thomas H.,	Glass-Nelson Clinic, 2020 S. Xanthus (S)	7-3341
Dean, W. A.,	607 Medical Arts Bldg. (Ob)	3-3900
Dodd, Nevin W.,	1453 S. Quaker	4-6853
Eads, Charles H.,	609 Medical Arts Bldg. (Ob-Gyn)	3-1330
Echols, Raymond S.,	St. John's Hospital, 1923 S. Utica (Anes)	7-4268
Edwards, D. L.,	Glass-Nelson Clinic, 2020 S. Xanthus (EENT)	7-3341
Etherton, Monte C.,	10-A South Lewis	4-6663
Evans, Hugh J.,	216 Medical Arts Bldg. (EENT)	2-4268
Ewell, William C.,	1307 S. Main (Ob)	3-0151
Farris, H. Lee,	303 Medical Arts Bldg.	4-5538
Fite, Marcia,	834 S. Wheeling	5-9951
First, Safety R.,	1011 Medical Arts Bldg. (Cardiac)	5-7545
Flack, F. L.,	McFarlin Bldg. (Ind-S)	3-2612
Ford, H. W.,	Tulsa Clinic, 915 S. Cincinnati	4-0177

Doctor	Address	Telephone
Forry, Willis W.,	Bixby, Oklahoma	
Franklin, Onis,	Broken Arrow, Oklahoma	
Franklin, Samuel E.,	1619 E. 15th (S)	3-2109
Fulcher Joseph,	1008 Medical Arts Bldg. (U)	3-4429
Funk, Robert E.,	212 Medical Arts Bldg. (I)	4-1159
Gaddis, N. C.,	1530 S. Peoria (I)	4-5978
Garrett D. L.,	701 Medical Arts Bldg. (S)	4-1900
Gastineau, Felix T.,	205 Medical Arts Bldg. (Oph)	4-2416
Getscher, Phillip E.,	412 Tri-State Insurance Bldg. (Orth)	2-9273
Glass, Fred A.,	Glass-Nelson Clinic, 2020 S. Xanthus (S)	7-3341
Goddard, R. K.,	Skiatook, Oklahoma	
Goen, Rayburne W.,	303 Braniff Bldg. (C&L)	5-5559
Goodman, Samuel,	603 Medical Arts Bldg. (I)	4-3141
Gorrell, Ben,	1109 Medical Arts Bldg. (EENT)	3-5378
Gorrell, John Franklin,	1109 Medical Arts Bldg. (EENT)	3-5378
Graham, Hugh C.,	1307 S. Main (Ped)	5-3455
Green, Harry,	311 Medical Arts Bldg. (Derm)	4-7585
Grosshart, Paul L.,	302 Medical Arts Bldg. (S)	3-5600
Haralson, Charles H.,	310 Medical Arts Bldg. (Oph)	3-0873
Hardman, Thomas J.,	502 Medical Arts Bldg. (S)	2-5684
Harris, Bunn,	Jenks, Oklahoma	
Hart, Mabel M.,	Tulsa County Red Cross Blood Center, 602 S. Cheyenne	5-3281
Hart, Marshall O.,	1228 S. Boulder	2-5904
Hayne, Robert A.,	Springer Clinic, 604 S. Cincinnati (NS)	5-7153
Hays, Luvern,	2445 E. 27th Pl. (Ped)	7-3788
Henderson, F. W.,	2541 E. 11th Pl.	6-8644
Henley, Marvin D.,	911 Medical Arts Bldg. (EENT)	2-6358
Henry, Gifford H.,	212 Court Arcade Bldg. (S)	3-1878
Hill, O. L.,	Tulsa Clinic, 915 S. Cincinnati	4-0177
Hoke, C. C.,	Philtower Bldg. (S)	2-8372
Hotz, Carl J.,	Springer Clinic, 604 S. Cincinnati (S)	5-7153
Hoover, W. D.,	201 Stanolind Bldg.	2-5143
Huber, Walter A.,	205 Medical Arts Bldg. (Oph)	4-2416
Hudson, David V.,	Tulsa Cooperative Clinic, 521 N. Boulder (PH)	4-6672
Hudson, Margaret G.,	City Health Dept., 521 N. Boulder	4-2138
Hulse, Charles A.,	Springer Clinic, 604 S. Cincinnati (U)	5-7153
Humphrey, B. H.,	Sperry, Oklahoma	
Hyatt, E. G.,	Springer Clinic, 604 S. Cincinnati (I)	5-7153
Johnson, E. O.,	209 Medical Arts Bldg. (Ob-Gyn)	4-2010
Johnson, Maxwell A.,	Glass-Nelson Clinic, 2020 S. Xanthus (U)	7-3341
Johnson, R. Chadwick,	Sand Springs, Okla.	S.S.102
Johnson, R. R.,	Sand Springs, Oklahoma	S.S. 102
Johnson, Robert Hall,	Glass Nelson Clinic, 2020 S. Xanthus (Orth)	7-3341
Jones, Delmas B.,	411 Medical Arts Bldg. (R)	4-3111
Jones, W. M.,	Tulsa Clinic, 915 S. Cincinnati (EENT)	4-0177
Kemmerly, H. P.,	902 Medical Arts Bldg. (Anes)	4-9637
Kornblee, A. T.,	916 Medical Arts Bldg. (Derm)	5-2661
Kramer, Allen C.,	607 Medical Arts Bldg.	3-8874
Larrabee, Walter S.,	411 Medical Arts Bldg. (R)	4-3111
Layton, O. E.,	Collinsville, Oklahoma	
Lee, J. K.,	Court Arcade Bldg. (I)	2-8484
LeMaster, D. W.,	902 Medical Arts Bldg.	5-7925
Lhevine, Morris B.,	B-7 Medical Arts Bldg. (R)	3-5294
Lindstrom, W. Carl,	1001 Medical Arts Bldg. (Ob-Gyn)	3-1413
Loney, William R. R.,	304 Medical Arts Bldg. (Ob)	4-9023
Lowe, J. O.,	Thompson Bldg.	2-6462
Lubin, Emanuel N.,	1106 Medical Arts Bldg. (U)	3-6008
Lusk, Earl M.,	Tulsa Clinic, 915 S. Cincinnati (Ob-Gyn)	4-0177
Lyons, Mason R.,	Turley, Oklahoma	5-3986
McDonald, John E.,	412 Tri-State Insurance Bldg. (Orth)	2-9273
McDowell, Richard E.,	Perry Clinic, 222 E. 5th (S)	5-5508
McGill, Ralph A.,	1010 Medical Arts Bldg. (S)	4-4215
MacKenzie, Ian,	1104 Medical Arts Bldg. (Orth)	2-3412
Margolin, Berthe,	1344 E. 17th Pl. (Anes)	2-0168
Markland, James D.,	411 Medical Arts Bldg. (All)	4-3111
Martin, Ralph F.,	Sand Springs, Oklahoma	S.S. 1260
Matt, John G.,	1001 Medical Arts Bldg. (Proc)	2-1014
Mery, Albert M.,	Braniff Bldg. (I)	5-5559

Doctor	Address	Telephone
Miller, George H.,	Atlas Life Bldg. (S)	2-6669
Miner, James L.,	1415 E. 15th (Ob-Gyn)	2-9062
Mishler, Donald L.,	Springer Clinic, 604 S. Cincinnati (EENT)	5-7153
Mitchell, Hugh B.,	Tulsa Clinic, 915 S. Cincinnati	4-0177
Mitchell, Tom Hall,	Carter Oil Company, Nat'l Bank of Tulsa Bldg. (Ind)	2-6101
Mohrman, S. S.,	1818 E. 15th	6-0959
Moore, Edward L.,	Braniff Bldg. (S)	3-4789
Mulmed, Earl I.,	Braniff Bldg. (I)	54-3028
Munding, L. A.,	1001 Medical Arts Bldg.	4-0964
Murdock, H. D.,	1011 Medical Arts Bldg. (S)	3-6915
Murray, P. G.,	506 Medical Arts Bldg. (Ob)	3-2867
Murray, Silas,	501 Medical Arts Bldg. (Ob)	2-8090
Neal, James H.,	City Health Dept., 521 N. Boulder (PH)	4-2138
Nelson, F. L.,	Atlas Life Bldg. (S)	3-7873
Nelson, Frank J.,	Glass-Nelson Clinic, 2020 S. Xanthus (I)	7-3341
Nelson, I. H.,	1107 Medical Arts Bldg. (Path)	4-1835
Nelson, Marque O.,	510 Medical Arts Bldg. (Derm)	4-3532
Nesbitt, P. P.,	1565 Swan Drive	3-1730
Newlin, W. H.,	Broken Arrow, Okla.	
Northrup, Laurence C.,	1307 S. Main (Ob-Gyn)	3-0151
Orr, Herbert S.,	1307 S. Main (S)	4-2658
Palik, Emil E.,	St. John's Hospital, 1923 S. Utica (Path)	7-3361
Park, Felix R.,	404 Medical Arts Bldg. (I)	2-9589
Pascucci, Lucien,	St. John's Hospital, 1923 S. Utica (R)	7-3361
Pavy, Chester A.,	801 Medical Arts Bldg. (EENT)	4-3207
Peden, James C.,	612 Medical Arts Bldg.	2-9018
Perry, Daniel L.,	Perry Clinic, 222 E. 5th	5-5508
Perry, Fred J.,	214 Braniff Bldg.	4-1472
Perry, Hugh,	Perry Clinic, 222 E. 5th (S-Ob)	5-5508
Perry, John C.,	808 Medical Arts Bldg. (S)	2-7622
Peters, James C.,	Tulsa Clinic, 915 S. Cincinnati (I)	4-0177
Pigford, Russell C.,	Court Arcade Bldg. (I)	3-8860
Pollack, Simon,	216 Braniff Bldg. (R)	2-7517
Porter, Horace H.,	Court Arcade Bldg.	4-1272
Presson, L. C.,	1948 N. Main	2-3383
Ray, R. G.,	Tulsa Clinic, 915 S. Cincinnati	4-0177
Reese, K. C.,	1102 Medical Arts Bldg. (Ped)	3-1114
Reynolds, E. W.,	Tulsa Clinic, 915 S. Cincinnati (Ob)	4-0177
Rhodes, R. E. L.,	509 Medical Arts Bldg.	3-4550
Richardson, Jack Leahy,	19 W. 10th (Orth)	3-3822
Roberts, T. R.,	Wright Bldg.	4-2833
Rogers, James W.,	406 Medical Arts Bldg. (U)	2-7735
Rubin, H. J.,	1619 E. 15th (Ped)	5-2273
Ruprecht, Homer A.,	Springer Clinic, 604 S. Cincinnati (I)	5-7153
Rushing, F. E.,	517 Medical Arts Bldg.	3-5542
Russell, G. R.,	Springer Clinic, 604 S. Cincinnati (Ped)	5-7153
Salamy, Joseph,	2523 E. 11th	9-9670
Schreck, Phillip M.,	202 Medical Arts Bldg. (I)	4-8409
Searle, Maurice J.,	512 Medical Arts Bldg. (Ped)	4-2901
Sethney, Walter F.,	2828 E. 15th (Ped)	9-3987
Shackelford, Paul O.,	Tulsa Clinic, 915 S. Cincinnati	4-0177
Shapiro, David,	1101 E. 15th	2-6801
Shepard, S. C.,	406 Medical Arts Bldg. (I)	3-7023
Shepard, R. M.,	306 Medical Arts Bldg. (C&L)	4-1821
Sherwood, R. G.,	Court Arcade Bldg.	3-9849
Shipp, J. D.,	316 Medical Arts Bldg. (Proc)	4-5670
Showman, W. A.,	409 Medical Arts Bldg. (Derm)	3-7789
Simms, Uca Frances,	1216 S. Owasso (Anes)	2-2393
Simpson, Carl F.,	502 Medical Arts Bldg. (Ob)	2-5403
Sinclair, Franklin D.,	307 Medical Arts Bldg. (Ob-Gyn)	5-6566
Sippel, Mary Edna,	1544 E. 15th	2-8560
Sisler, Wade,	Mercy Hospital, 807 S. Elgin (Orth)	5-3123
Smith, D. O.,	Springer Clinic, 604 S. Cincinnati (I)	5-7153
Smith, Ruric N.,	1017 Medical Arts Bldg. (EENT)	3-3208
Smith, Wendell L.,	2431 E. Admiral	6-2380
Smith, William Orlando,	Tri-State Insurance Bldg. (EENT)	3-5194
Spann, Logan A.,	203 Braniff Bldg.	2-0216

Doctor	Address	Telephone
Springer, M. P., Springer Clinic, 604 S. Cincinnati		5-7153
Stallings, T. W., 724 S. Elgin (EENT)		2-2641
Stanley, M. V., 212 W. 8th		4-0531
Steel, Marcella R., 1356 E. 27th Pl. (Anes)		3-7537
Stevenson, James, 615 Medical Arts Bldg. (Derm)		5-2562
Stewart, H. B., St. John's Hospital, 1923 S. Utica (Anes)		7-4268
Stokes, E. Malcolm, 1415 E. 15th (Ob-Gyn)		4-8657
Stokes, Lowell L., 517 Medical Arts Bldg.		3-3581
Stowell, Averill, Springer Clinic, 604 S. Cincinnati (NS)		5-7156
Strong, Paul T., Glass-Nelson Clinic, 2020 S. Xanthus (I)		7-3341
Stuard, Charles G., Court Arcade Bldg. (Oph)		4-3435
Stuart, Frank A., 412 Tri-State Insurance Bldg. (Orth)		2-9273
Stuart, Leon H., 1107 Medical Arts Bldg. (R)		5-2348
Summers, C. S., 611 Daniel Bldg.		3-9011
Sundgren, Vincel, Springer Clinic, 604 S. Cincinnati (I)		5-7153
Swanson, Karl F., Springer Clinic, 604 S. Cincinnati (U)		5-7153
Thomas, William F., Jr., 100 Braniff Bldg. (Ob-Gyn)		4-1642
Thompson, James B., Springer Clinic, 604 S. Cincinnati (S)		5-7153
Thompson, Oliver H., Court Arcade Bldg.		5-7115
Trainor, W. J., 1011 Medical Arts Bldg. (I)		5-7545
Turnbow, William R., 2112 W. 41st		5-0653
Turner, Tom R., Springer Clinic, 604 S. Cincinnati (P)		5-7153
Underwood, David J., 815 Medical Arts Bldg. (Ped)		3-7475
Underwood, F. L., 1001 Medical Arts Bldg.		3-5514
Ungerman, Arnold H., 708 Medical Arts Bldg. (P)		2-3151
Ungerman, Milford S., 708 Medical Arts Bldg. (P)		2-3151
Wadsworth, R. M., 1445 S. Quaker (Ped)		3-4300
Walker, William A., Kennedy Bldg.		4-5257
Wallace, Albert W., Springer Clinic, 604 S. Cincinnati (I)		5-7153
Wallace, J. E., 914 Medical Arts Bldg. (Gyn)		2-6501
Ward, Benjamin W., Wright Bldg. (S)		3-0081
White, Harold A., 701 Medical Arts Bldg. (S)		4-1900
White, Eric M., 312 Medical Arts Bldg.		3-1181
White, James W., Braniff Bldg. (Ped)		2-4735
White, N. Stuart, 312 Medical Arts Bldg.		3-1181
Wiley, A. Ray, 812 Medical Arts Bldg. (S)		3-0202
Williams, Theodore S., 210 Medical Arts Bldg.		3-8443
Wilner, Sol, B-7 Medical Arts Bldg. (R)		3-5294
Witcher, Robert B., 909 Medical Arts Bldg.		2-4673
Wolff, Eugene G., St. John's Hospital, 1923 S. Utica (Anes)		7-4268
Woodson, Fred E., 908 Medical Arts Bldg. (Anes)		2-8233
Wright, Kenneth L., Jr., 4107 1/2-A E. 11th		92-1486
Yandell, Hays R., Glass-Nelson Clinic, 2020 S. Xanthus (S)		7-3341

APPLICATIONS PENDING, JULY 1, 1949

Gilliland, Charles E., Court Arcade Bldg. (I)	3-2664
Kelley, James W., 812 Medical Arts Bldg. (Plastic Surgery)	3-0202

HONORARY MEMBERS

Brookshire, J. E., Ritz Building	3-5094
Brown, Paul R., 1614 E. 35th	3-9903
Clinton, Fred S., 230 E. Woodward Blvd.	3-0014
Cook, W. Albert, 1106 Medical Arts Bldg.	3-6008
Hall, Gilbert H., Trimble Bldg.	3-8316
Hooper, Joel S., U. S. Veterans Facility, Muskogee, Okla.	
Lynch, Thomas J., 2132 E. 24th	7-4172
Mayginnes, P. H., 1624 S. Norfolk	3-1244
Nesbitt, E. P., 240 Orchard Street, East Lansing, Michigan	
Reynolds, J. L., Orpheum Bldg.	3-5659
Venable, Sidney C., 1757 S. Columbia	7-1067
Wall, Gregory A., 1202 N. Main	2-3710

TULSA MEDICAL DIRECTORY

TULSA COUNTY MEDICAL SOCIETY

Executive Offices: 1202 Medical Arts Building, Tulsa. Telephone 4-8161. Hours 8:30-5:00 daily except Saturday, 8:30-1:00. Mr. Jack Spears, Executive Secretary. Address all communications to this office.

Officers: Dr. John E. McDonald, President; Dr. Fred E. Woodson, President-Elect; Dr. W. A. Showman, Vice-President; Dr. John G. Matt, Secretary-Treasurer. Trustees: Dr. Ralph A. McGill, Dr. Homer A. Ruprecht, Dr. Robert E. Funk, Dr. Marshall O. Hart, and Dr. Maurice J. Searle. Board of Censors: Dr. J. D. Shipp, Chairman, Dr. Thomas J. Hardman, and Dr. Thomas H. Davis.

Medical Library: 1203 Medical Arts Building, Tulsa. Telephone 4-1461. Hours 9:00-5:00 daily except Saturday 9:00-1:00. Open Tuesday evenings, 6:00-9:00. Miss Irma A. Beehler, Librarian. Miss June Walker, Assistant. Dr. Morris B. Lhevine, Chairman, Medical Library Committee.

Medical Credit Bureau: 1201 Medical Arts Building, Tulsa. Telephone 4-8161. Hours 8:30-5:00 daily except Saturday, 8:30-1:00. Mr. Jack Spears, Manager. Mrs. Virgil H. Trotter and Miss Alma Hulet, Clerks. Dr. Paul L. Grosshart, Chairman, Medical Credit Bureau Committee.

The Bulletin: Address all communications concerning The Bulletin, including advertising and distribution, to Mr. Jack Spears, Executive Secretary, Tulsa County Medical Society, 1202 Medical Arts Building, Tulsa. Dr. Gifford H. Henry, Editor. Advertising rates upon request.

OKLAHOMA STATE MEDICAL ASSOCIATION

Executive Offices: 210 Plaza Court, Oklahoma City, Oklahoma. Telephone 7-0976. Mr. R. H. Graham, Executive Secretary. Mr. John K. Hart, Associate Executive Secretary. Officers: Dr. George H. Garrison, Oklahoma City, President; Dr. Ralph A. McGill, Tulsa, President-Elect; Dr. H. Violet Sturgeon, Hennessey, Vice-President; Dr. Lewis J. Moorman, Oklahoma City, Secretary-Treasurer; Dr. James Stevenson, Tulsa, and Dr. John F. Burton, Oklahoma City, Delegates to the American Medical Association.

Postgraduate Medical Study Committee: 212 Plaza Court, Oklahoma City. Dr. G. E. Stanbro, Oklahoma City, Chairman.

AMERICAN MEDICAL ASSOCIATION

Executive Offices: 533 North Dearborn, Chicago, Illinois. Dr. George F. Lull, Executive Secretary. Address all communications, including subscriptions to The Journal, to this office. **Washington Office:** 1302 18th Street NW, Washington, D. C. Dr. J. S. Lawrence, Director. **National Education Campaign:** Whitaker & Baxter, One North La Salle Street, Chicago.

TULSA COUNTY HOSPITALS

Byrne Memorial Hospital. 1321 S. Peoria, Tulsa. Telephone 2-4114. Mrs. Bessie Byrne, Owner.

Flower Hospital. 523 N. Boulder, Tulsa. Telephone 2-2208. Dr. Paul E. Craig, Medical Director.

Franklin Hospital. Broken Arrow, Okla. Dr. Onis Franklin, Medical Director.

Hillcrest Lying-In Hospital. 1615 E. 12th, Tulsa. Telephone 2-8134. Mr. Bryce L. Twitty, Administrator.

Hillcrest Memorial Hospital. 1653 E. 12th, Tulsa. Telephone 3-2131. Mr. Bryce L. Twitty, Administrator.

Medical & Surgical Hospital. 1307 S. Main, Tulsa. Telephone 3-0151. Dr. L. C. Northrup, Medical Director.

Mercy Hospital. 807 S. Elgin, Tulsa. Telephone 5-3123. Dr. Wade Sisler, Owner.

Moton Memorial Hospital. 603 E. Pine, Tulsa. Telephone 4-8430. Mr. T. A. West, Administrator.

St. John's Hospital. 1923 S. Utica, Tulsa. Telephone 7-3361. Sister M. Olga, Administrator. Dr. Paul Grosshart, Chief of Staff.

City Health Department. 521 N. Boulder, Tulsa. Telephone 4-2138. Dr. James H. Neal, Acting Superintendent.

City Schools Health Department. 1514 S. Quaker, Tulsa. Telephone 4-9642. Dr. Marcella R. Steel, Superintendent.

County Health Department. 521 N. Boulder, Tulsa. Telephone 4-2138. Dr. D. W. LeMaster, Superintendent.

Group Hospital Service of Oklahoma. 315 S. Denver, Tulsa. Telephone 2-6264. Mr. N. D. Helland, Executive Director. Mr. Ralph Bethel, General Manager.

Medical & Dental Arts Building. 106 W. 6th, Tulsa. Telephone 4-4709. Mr. T. A. Hunt, Building Manager.

Medical License Registrar. Mr. Andy Stokes, County Clerk, County Courthouse, 6th and Boulder streets, Tulsa. Telephone 3-2321.

Oklahoma Division, American Cancer Society. Commerce Exchange Building, Oklahoma City, Oklahoma. Dr. J. R. B. Branch, Executive Director.

Oklahoma Medical Research Foundation. Commerce Exchange Building, Oklahoma City, Oklahoma. Mr. Hugh Payne, Executive Director.

Oklahoma Physicians Service. 315 S. Denver, Tulsa. Telephone 2-6264. Mr. N. D. Helland, Executive Director.

Oklahoma State Board of Medical Examiners. 813 Braniff Bldg., Oklahoma City, Oklahoma. Dr. Clinton Gallaher, Shawnee, Secretary. Address all communications to the Oklahoma City office.

Oklahoma State Health Department. 3400 N. Eastern, Oklahoma City. Dr. Grady F. Mathews, Commissioner.

St. John's Tumor Clinic. 1923 S. Utica. Telephone 7-3361. Miss Lois Taylor, Secretary.

Tulsa Chamber of Commerce. Tulsa Building, Tulsa. Telephone 5-1201. Mr. Booth Moffett, Secretary, Public Health Committee.

Tulsa Council of Social Agencies. 602 S. Cheyenne, Tulsa. Telephone 5-6701. Mr. Friendly Ford, Executive Secretary.

Tulsa County Public Health Association. 807 S. Peoria, Tulsa. Telephone 5-3238. Miss Odessa Winters, Director.

Tulsa County Red Cross Blood Center. 602 S. Cheyenne, Tulsa. Telephone 5-3281. Dr. Mabel M. Hart, Medical Director.

Tulsa Cooperative Clinic. 521 N. Boulder, Tulsa. Telephone 4-6672. Dr. David V. Hudson, Director. For treatment and control of venereal diseases.

Tulsa County Medical Clinic. 212 W. 6th, Tulsa. Telephone 3-2437. Dr. J. J. Billington, Medical Director and County Physician. For treatment of indigent cases.

INTERN & RESIDENT PERSONNEL

Hillcrest Hospital: Dr. Jack Newport, Dr. Charles Cashman, Dr. Herbert J. Forrest, Dr. Gordon Seskind, Dr. B. F. Bridges, Dr. Hugh Nicholas, Dr. Robert Imler, Dr. William Henderson, Dr. Donald J. Purcell, Dr. Robert H. Manley, Dr. C. H. Farrer, and Dr. Rosemary Harvey.

St. John's Hospital: Dr. W. C. Vernon, Jr., Dr. Thomas H. Fair, Dr. Arthur M. Anderson, Dr. Lewis A. Bean, Dr. Byron Bailey, Dr. L. H. Siegel, Dr. William R. McShane, Dr. Mona Rose, Dr. John A. Stuart, Jr., Dr. William McCann, Dr. B. M. Rose, Dr. Douglas T. Ferraro, Dr. Homer D. Hardy, Jr., Dr. B. J. Reynolds, and Dr. David L. McAlester.

KEY TO SYMBOLS

For purposes of information physicians who practice a major specialty are so indicated in the foregoing roster. The symbol following the name indicates the specialty practiced. However, this listing does not necessarily mean that the physician named limits himself strictly to that specialty.

All—Allergy	Gyn—Gynecology	PH—Public Health
Anes—Anesthesia	I—Internal Medicine	Path—Pathology
C & L—Chest and Lungs	Ind—Industrial Medicine	Ped—Pediatrics
Derm—Dermatology	NS—Neuro-Surgery	Proc—Proctology
EENT—Eye, Ear, Nose and Throat	Ob—Obstetrics	R—Radiology
	Oph—Ophthalmology	S—Surgery
	Orth—Orthopedics	U—Urology
	P—Psychiatry	



JAMES SHADDOCK



DEANE RALEY

Ethical Prescriptionists

FIFTEENTH AT QUAKER

Telephone 4-3133

MEDICAL SERVICE SOCIETY OF AMERICA

Membership Roster, Tulsa Chapter

<i>Name:</i>	<i>Representing:</i>	<i>Telephone:</i>
Cecil O. Butler	Sharpe & Dohme	6-6418
William A. Cates	E. R. Squibb Co.	7-1267
William L. Davis	Ayerst, McKenna & Harrison	7-4045
C. R. Doran	Lakeside	Claremore
Lewis Duncan	Parke-Davis	6-7125
Carl Gibson	William S. Merrill Co.	4-0256
R. C. Gooch	Abbott Laboratories	9-4389
J. L. Hedges	Massengill	6-8538
A. L. Kessler	Pitman-Moore	7-4946
Joe Loudonback	Flint-Eaton	7-1418
R. Wayne Morrow	Bauer & Black	2-0598
J. D. Nance	E. R. Squibb Co.	8575
Dan P. Payne	William S. Merrill Co.	6-5643
Tom Sellers	G. D. Searle	4-6991
Preston Walker	Upjohn	7-6464
J. B. Waters	Winthrop-Stearns	5-2577

D. L. KINCAID
(Kinney)

RAYMOND EWERS

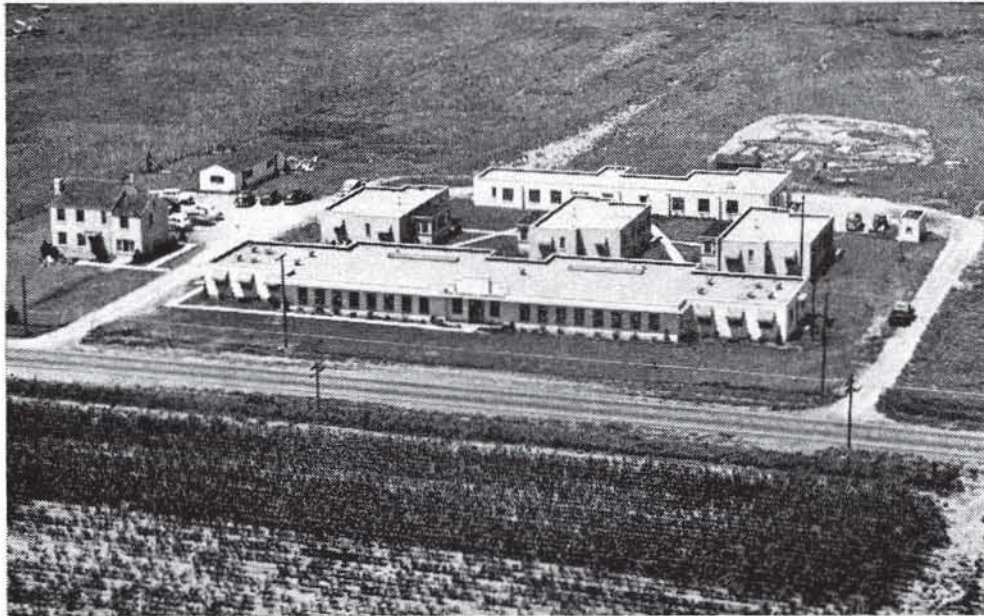
Professional **DRUG SHOP**

An Ethical Prescription Pharmacy

2110 South Utica

Telephone 3-8169

City Wide Delivery Service
Two Miles Closer to Southeast Tulsa



THE COYNE CAMPBELL SANITARIUM

NORTHEAST TWENTY-THIRD STREET AND SPENCER ROAD

Route 4, Box 65

Oklahoma City, Okla.

PERSONALS

DR. E. RANKIN DENNY has removed his practice to Ashville, North Carolina, where he will be associated with the Norburne Clinic and Hospital.

DR. FRANKLIN D. SINCLAIR has taken new offices at 307 Medical Arts Building, Tulsa.

DR. TOM R. TURNER has been named as a Diplomate of the American Board of Neurology and Psychiatry.

DR. M. V. STANLEY has taken new offices at 212 W. 8th Street, Tulsa.

The Perry Brothers Clinic, an attractive new clinic building at 222 East 5th Street, Tulsa, is now occupied by DR. HUGH PERRY, DR. DANIEL PERRY, and DR. RICHARD E. McDOWELL.

ATLANTIC CITY

(Continued From Page 7)

dorse government participation in some projects, such as mental hygiene clinics and improvement of public health facilities, but in each case was careful to specify that control be free of politics and left in the hands of the profession . . . The exhibits were wonderful as usual, but few visitors had the time or inclination to visit all of the many hundreds of commercial and scientific exhibits. Visiting doctors saw themselves on television, most deciding to remain in the practice of medicine . . . Dr. Ralph A. McGill, Dr. Hugh J. Evans, and Dr. H. A. Ruprecht enjoyed the surf for a few chilly minutes much to the amusement of their wives . . . Dr. and Mrs. A. H. Ungerman flew down from New York for a

day's visit on the Boardwalk . . . Dr. W. Albert Cook renewed old acquaintances among many friends in the House of Delegates, where he served for several terms . . . Dr. John F. Gorrell taking the sea air in stride . . . Dr. D. B. Jones boning for a Board examination . . . Dr. John E. McDonald attended the Orthopedist meeting immediately preceding the AMA general sessions . . . Dr. James C. Peters . . . Dr. Averill Stowell . . . Dr. Marcella R. Steel . . . apologies to anyone we missed . . . the 1950 session will be in San Francisco.



DICK KELLO

Offers

Prompt Motor Delivery
Of Your Prescriptions

Telephone 6-2156

BALL DRUG STORE

College at Admiral

AKIN'S

We Specialize

In Foods For Every Kind of Diet

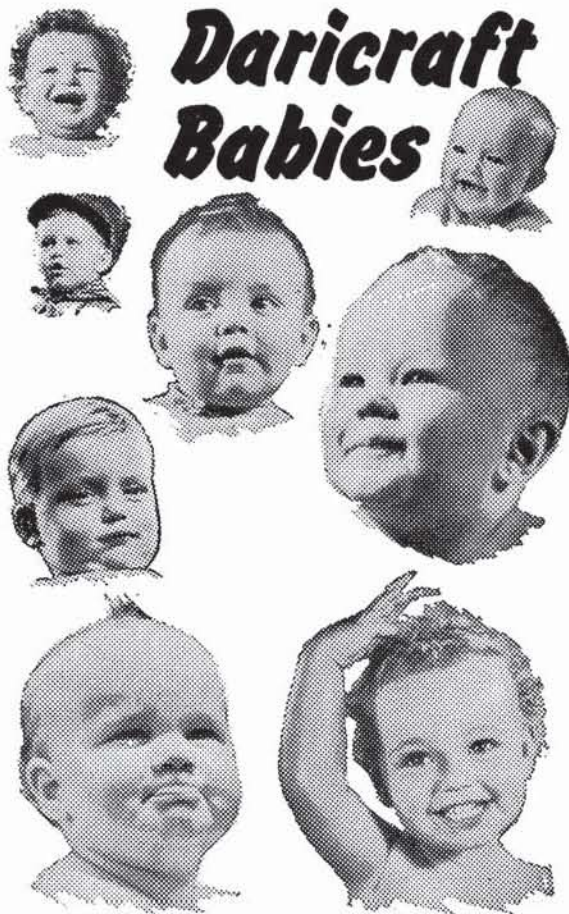
Our Health Bakery

A full line of baked goods made from Whole Grain Flour, Soy Flour, Starch, Restricted Flour, Whole Wheat Flour, Rye Flour, and Corn Meal. Wheat Germs, Soy Oil, Honey, and Sea Salt used in all of our bakery products.

LET US FILL YOUR DIETS

722 South Boulder

Phone 7711



Daricraft Babies

More and more
doctors are prescribing
Daricraft Homogenized
Evaporated Milk
for babies . . . and for
convalescent diets

Always uniform in quality, safe, steri-
lized, high in food value and minerals.
Contains 400 U. S. P. units Vitamin D
per pint of Daricraft. Easily digested.



PRODUCERS CREAMERY CO., SPRINGFIELD, MO.

CATRON PHARMACY

Northwest Corner
11TH AND HARVARD

*Reliable
Prescription
Service*

TELEPHONE 6-2101

FRESH — CLEAN — COMPLETE

PRESCRIPTION STOCK

Free Prescription Delivery

GWYN S. CATRON, Owner

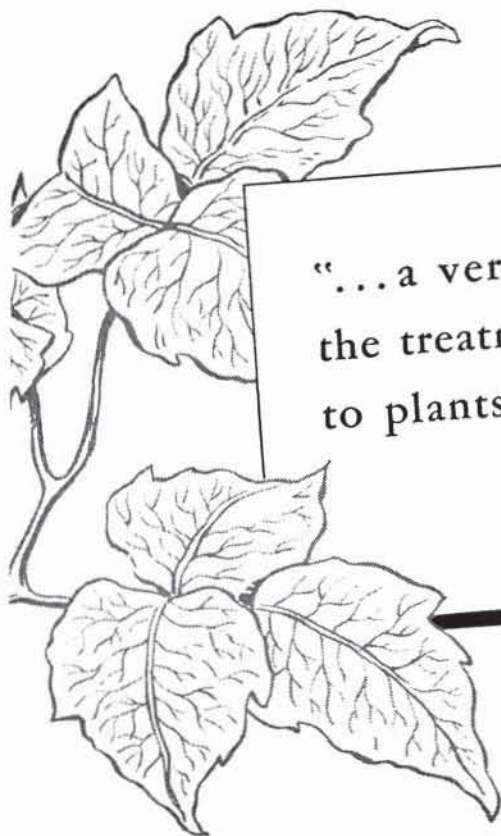
ST. JOHN'S HOSPITAL

*A Leading
Institution
In
Oklahoma
Medicine*

1923 SOUTH UTICA
TULSA, OKLAHOMA

TELEPHONE

6-2161



“...a very valuable adjunct to
the treatment of dermatitis due
to plants, especially

POISON IVY...”⁽¹⁾

PYRIBENZAMINE cream or ointment

Applied locally, Pyribenzamine hydrochloride usually gives prompt and prolonged relief from itching in dermatitis venenata due to poison ivy, oak or sumac.

Pyribenzamine has also been found to give relief to the majority of patients with other itching dermatoses, “particularly atopic dermatitis and pruritus ani.”²

“In many instances the local skin conditions are, of course, more rapidly and more completely eradicated by the combined topical and oral administration of this drug.”¹

1. Carrier, R. E., Krug, E. S., and Glenn, H. R.: J. Lancet, 68: 240, June 1948.
2. Feinberg, S. M. and Bernstein, T. B.: J. of A.M.A., 134: 10, July 1947.

PYRIBENZAMINE CREAM, 2 per cent (water-washable base), jars of 50 Gm. and 1 pound; Ointment, 2 per cent (petrolatum base), jars of 50 Gm. and 1 pound.

Ciba PHARMACEUTICAL PRODUCTS, INC., SUMMIT, NEW JERSEY

PYRIBENZAMINE (brand of tripeleminamine) — Trade Mark Reg. U.S. Pat. Off.



2/1417M

***Prescriptions
Exclusively***

**T. ROY BARNES
D R U G R Y**

Free Delivery

603 S. Boulder

Phone 2-3119

DAIRY COUNCIL OF TULSA

*Promoting health and human welfare through
knowledge of milk and milk products*

312 WRIGHT BUILDING

TULSA 3, OKLAHOMA

Telephone 4-8280

Affiliated With National Dairy Council

FROM SECRETARY OF DEFENSE LOUIS JOHNSON—

AN URGENT APPEAL TO YOUNG DOCTORS!

Your personal help is needed to avert a serious threat to our national security!

By the end of July of this year we will have lost almost one-third of the physicians and dentists now serving with our Armed Forces. Without an increased inflow of such personnel, the shortage will assume even more dangerous proportions by December of this year.

These losses are due to normal expiration of terms of service. The professional men who are leaving the Armed Forces during this critical period are doing so because they have fulfilled their duty-obligations and have earned the right to return to civilian practice.

Without sufficient replacements for these losses, we cannot continue to provide adequate medical and dental care for the almost 1,700,000 service men and women who are the backbone of our nation's defense.

Normal procurement channels will not provide sufficient replacements!

To alleviate this critical, impending shortage of professional manpower in the three services, I am urging all physicians and dentists who were trained under wartime A.S.T.P. and V-12 programs under government auspices or who were deferred in order to complete their training at personal expense, and who saw no active service, to volunteer for a two-year tour of active duty, at once!



We have written personally to more than 10,000 of you in the past weeks urging such action. The response to this appeal has not been encouraging, and our Armed Forces move rapidly toward a professional manpower crisis!

Many responses have been negative, but worse—a great number of doctors have not replied. It is urgent that we hear from you immediately!

We feel certain that you recognize an obligation to your fellow men as well as to your profession in this matter. We are confident that you will fulfill that obligation in the spirit of public service that is a tradition with the physician and dentist.

There is much to be said for a tour of duty with any of the Armed Forces. You will work and train with leading men of your professions. You will have access to abundant clinical material; have the best medical and dental facilities in which to practice. You will expand your whole concept of life through travel and practice in foreign lands. In many ways, a tour of service will be invaluable to you in later professional life!

Volunteer now for active duty. You are urged to contact the Office of Secretary of Defense by collect wire immediately, signifying your acceptance and date of availability. Your services are badly needed. Will you offer them?

Louis Johnson

TRI-CALSATE

THE BUFFERED GASTRIC ANTACID

The nucleus of the peptic ulcer problem lies in the neutralization of excess HCl in the stomach contents by an antacid that will meet the requirements of real physiologic and therapeutic economy. TRI-CALSATE has these advantages:



1. TRI-CALSATE neutralizes the HCl of the gastric contents and desensitizes the pain producing mechanism.
2. There is no evolution of carbon dioxide during the reaction in the stomach, hence the distress from gastric distention and belching is eliminated.
3. It does not make the gastric contents alkaline.
4. The possibility of the development of alkalosis is minimized.
5. The probability of gastro-intestinal irritation is remote.
6. It does not injure the kidneys.
7. It is palatable and convenient to take.

Approx. percentage composition when in aqueous suspension:

Tri-calcium phosphate U.S.P.	35.5
Tri-sodium phosphate crystals (arsenic free)	12.5
Sodium citrate crystals	52.0
	100.0

Available on Rx in 4½ oz. and 18 oz. bottles
Write for trial package and literature.

F.H. PAXTON & SONS, INC.
469 E. OHIO ST. Manufacturing Pharmaceutical Chemists CHICAGO 11, ILL.

HARVARD DRUG STORE

B. C. SHINN, Owner

PHONE 6-2186

*The
Suburban
Prescription
Store*

FREE
PRESCRIPTION
DELIVERY

3244 E. 11th St.
Tulsa

HILLCREST MEMORIAL HOSPITAL

*One of Oklahoma's
finer hospitals*

1653 East Twelfth St.

Telephone 3-2131

TULSA, OKLAHOMA



For
**RADIANT HEALTH
BUOYANT ENERGY
SOUND BONES
BEAUTIFUL TEETH**

We Recommend
**Homogenized
'VITAMIN D' MILK**

Fortified With 400 U.S.P. Units
Vitamin D Per Quart, By Vitex Process

Beatrice Foods Co.

215 North Denver

Telephone 4-2471

GOOD WILL

is the one and only asset
that competition cannot
undersell or destroy

CURTAINS PRESCRIPTION LABORATORY

SIXTH AND BOULDER

PHONE 4-7116

A Strict Ethical Pharmacy in Policy and Appearance

SEC. 562, P. L. & R.

U. S. POSTAGE

PAID

TULSA 3, OKLA.

PERMIT No. 13

(Return Postage Guaranteed)

COURTRIGHT IN THE COURT ARCADE

Tulsa's only "Ophthalmic - Dispenser" - - - manufacturing and fitting eye-glasses exclusively for patients of the Eye-Physician (M. D.) - - - visit our complete and modernlv equipped laboratory.

Res. Phone 6-1289

25 YEARS EXPERIENCE

Office Phone 4-1613

MERKEL X-RAY CO.

Exclusive Distributors For—

Westinghouse X-Ray Equipment

Physical Therapy Equipment



Complete Stock
X-Ray and Physical Therapy
Supplies



TULSA

1114 S. Boulder

Tel. 2-4897

OKLAHOMA CITY

1130 N. Hudson

Tel. 2-3522

MID-CONTINENT SURGICAL SUPPLY CO.

Hospital and Physicians
Equipment and Supplies
X-Ray Equipment

*The Complete
Surgical Supply Store*

We carry a complete stock of instruments, rubber goods, surgical dressings, sutures, laboratory stains or reagents, enamel-ware, examining room furniture, wheel chairs, supports and trusses.

PHONE 2-8169

TULSA

610 SOUTH BOSTON

Commercial Printing Company PRINTERS

We Print the Bulletin

OFFICE AND PLANT AT 417 EAST 3RD STREET

R. W. (Bob) HUDSON

Publications, Programs
Advertising Literature,
Office and Factory Forms
Fine Personal Stationery

TELEPHONE 2-2450

LIBRARY
TULSA COUNTY MEDICAL SOCIETY