

LIBRARY
TULSA COUNTY MEDICAL SOCIETY,



THE BULLETIN

of the Tulsa County Medical Society

Build Tulsa



IN THIS ISSUE



Tulsa To Entertain 1,000
Visiting Oklahoma Doctors



The Medical Library



Tulsa Urologist Speaker
For Society Meeting May 9th



New Blood Center Hours

56TH ANNUAL CONVENTION

*Oklahoma State
Medical Association*

**TULSA
MAY 16-18**

Vol. 15

No. 5

May, 1949

Remember in 1932 we brought out Pablum? *

Embodying a new concept of cereal nutrition, easy of preparation, nonwasteful, forerunner of present day widely practised principles of food fortification

—remember?



Later, in response to requests from physicians, we went a step further in Pabena,* similar in nutritional and convenient features to its father-product, Pablum, different in flavor because of its oatmeal base. If our pioneer work and ethical policy meet with your approbation, remember, please, to specify Pablum and Pabena.

*"Pablum" and "Pabena" are the registered trademarks of Mead Johnson & Company for these vitamin-and-mineral-enriched precooked cereal foods.

Mead Johnson & Company, Evansville 21, Indiana, U.S.A.

**If she is one
of your patients**



...Your help now may spell the difference between unprovided-for old age and economic security.

Women in business who are nervous, emotionally unstable and generally distressed by symptoms of the climacteric almost inevitably experience a reduction in efficiency as well as earning power.

"Premarin" offers a solution. Many thousand physicians prescribe this naturally-occurring, oral estrogen because...

- 1. Prompt symptomatic improvement usually follows therapy.*
- 2. Untoward side-effects are seldom noted.*
- 3. The sense of well-being so frequently reported tends to quickly restore the patient's confidence and normal efficiency.*
- 4. This "Plus" (the sense of well-being enjoyed by the patient) is conducive to a highly satisfactory patient-doctor relationship.*
- 5. Four potencies provide flexibility of dosage: 2.5 mg., 1.25 mg., 0.625 mg. and 0.3 mg. tablets; also in liquid form, 0.625 mg. in each 4 cc. (1 teaspoonful).*




While sodium estrone sulfate is the principal estrogen in "Premarin," other equine estrogens...estradiol, equilin, equilenin, hippulin...are probably also present in varying amounts as water-soluble conjugates.

"PREMARIN"



**ESTROGENIC SUBSTANCES (WATER-SOLUBLE)
also known as CONJUGATED ESTROGENS (equine)**



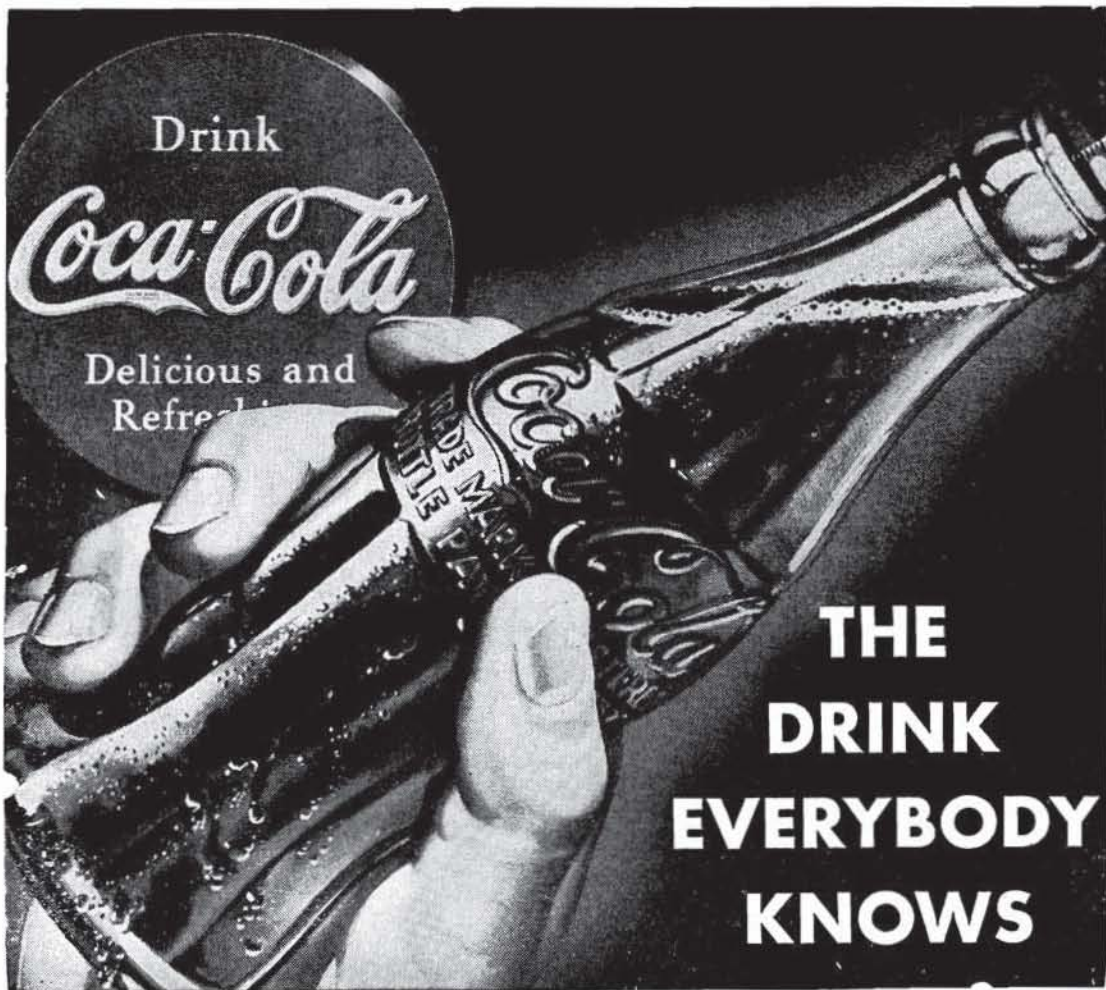
Rx

Your Doctors
RIGHT HAND

Thank You, Doctor!

Your good will is appreciated. We shall try to keep it through continued courteous prescription service. Our stock of pharmaceuticals is the largest in Eastern Oklahoma. We welcome your call.

MEDICAL ARTS PRESCRIPTION SHOP
Telephone 4-0121 O. L. Prather, Manager



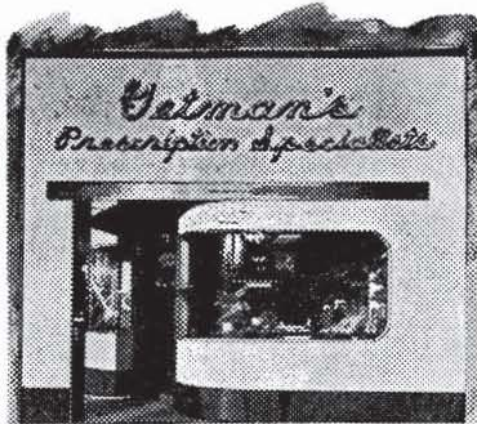
Drink
Coca-Cola
Delicious and Refreshing

**THE
DRINK
EVERYBODY
KNOWS**

COPYRIGHT 19 THE COCA-COLA

GETMAN'S

ROY R. GETMAN, Founder



*Sixth and Main Sts.
Phone - 3 6171*

The dictionary defines
ETHICAL

"In accordance with the rules or standards for right conduct or practice, especially the standards of a profession."

We accept that definition and assume the obligations.

FREE DELIVERY NIGHT AND DAY.

WE GIVE S & H GREEN STAMPS

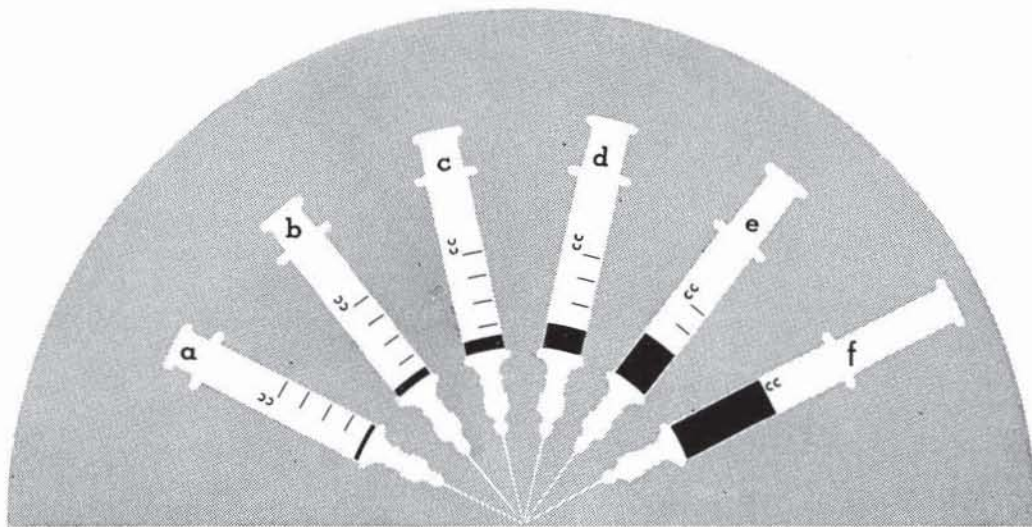
Sponsors of the "Tell Me, Doctor" Radio Broadcasts at 5:15 P.M. each Monday through Friday, KTUL, prepared by The Oklahoma State Medical Association.

CONTENTS

State Meeting Opens May 15	7
Going To The AMA?	8
Convention Guest Speakers	8
Convention Officials	9
New Blood Center Hours	9
President's Page	10
Death Of The NPC	12
Mutual Responsibilities	12
The Medical Library	15
Library Trust Fund Planned	16
Personals	16
May Program Notes	19
New Members	20

ADVERTISERS

Akins Natural Foods	22
Ayerst, McKenna and Harrison	3
Ball Drug Company	19
Beatrice Foods, Inc	23
Catron Pharmacy	20
Ciba Pharmaceutical Products	11
Coca-Cola Bottling Co.	4
Commercial Printing Company	24
Courtright Optical Co.	24
Coyne Campbell Sanitarium	18
Curtain's Prescription Laboratory	23
Daricraft	16
Dairy Council of Tulsa	14
Eli Lilly and Co.	6
Getman Drug Company	5
Harvard Drug Company	22
Hillcrest Hospital	22
Mead Johnson & Company	2
Medical Arts Prescription Shop	4
Medical Credit Bureau	22
Medical Service Society	13
Merkel X-Ray	24
Mid-Continent Co.	24
F. H. Paxton and Sons	21
Professional Drug Co.	13
Raley Shaddock Pharmacy	14
Smith-Dorsey Company	17
St. John's Hospital	20
T. Roy Barnes Drugry	18



equal in antianemia potency

The volume of parenteral liver extract represented in syringe "a" is *one-twentieth* of that contained in syringe "f." The antianemia potency of the volume illustrated in each syringe is the same.

Regardless of the concentration selected, there is available a Lilly preparation that will completely maintain the pernicious anemia patient. • The antianemia potency of 'Reticulogen'

(Parenteral Liver Extract with Vitamin B₁₂, Lilly) is such that, in uncomplicated cases of pernicious anemia, no more than *one-twentieth* cubic centimeter is required per day to maintain satisfactory red-blood-cell and hemoglobin levels and to prevent the advancement or development of neurological complications.

This certain response to every lot of 'Reticulogen' has been determined by standardization on known cases of pernicious anemia.

Specify 'Reticulogen,' the most potent injectable liver extract available, the next time you order through your usual source of supplies.

Complete literature on 'Reticulogen' is available from your Lilly medical service representative or will be forwarded upon request.

ELI LILLY AND COMPANY
INDIANAPOLIS 6
INDIANA, U.S.A.

THE BULLETIN

OF THE

TULSA COUNTY MEDICAL SOCIETY

John E. McDonald, M.D., *President* Fred E. Woodson, M.D., *President-Elect*
 W. A. Showman, M.D., *Vice-President* John G. Matt, M.D., *Secretary-Treasurer*
 Jack Spears, *Executive Secretary*

Vol. 15

TULSA, OKLAHOMA, MAY, 1949

No. 5

STATE MEETING OPENS HERE MAY 15

Record Attendance Expected for 56th Annual Meeting of the Oklahoma State Medical Association. Nine Prominent Guest Speakers Feature Program.

Final plans and arrangements were completed last month as the Tulsa County Medical Society prepared to entertain a record number of Oklahoma doctors and visitors at the 56th Annual Meeting of the Oklahoma State Medical Association in Tulsa next May 15-18. Judging from advance hotel registrations attendance may reach an all-time high of one thousand State physicians.

Features of the 1949 convention will include:

(1) A splendid scientific program comprising papers by nine nationally known leaders in in all fields of medicine as well as

presentations by more than fifty Oklahoma doctors. A total of 75 lectures has been scheduled for the three days of the scientific program, May 16-18.

(2) The annual regular meeting of the House of Delegates of the Oklahoma State Medical Association on Sunday, May 15, with a second session scheduled for Monday, May 16, if necessary.

(3) A three-day program of business, social, and educational events by the

Women's Auxiliary to the Oklahoma State Medical Association.

(4) Commercial exhibits of latest drug products, surgical and medical equipment and other medical products by thirty-five nationally known firms.

(5) The President's Annual Dinner Dance at The Mayo, 8:00 P.M., on Tuesday, May 17, which will be preceded by a complimentary reception and social hour at 6:30 P.M. with members and visitors and their wives as guests of the Tulsa County Medical Society. Dancing will begin at 10:00 P. M. with music by Joe Linde



DR. JOHN ALBERT KEY

and his Orchestra.

(6) Daily roundtable luncheons at 12:30 P.M., featuring guest speakers in question-and-answer sessions.

(7) The Annual Oklahoma State Medical Association Golf Tournament will be held Monday, May 16, with golfing beginning at 12:00 Noon at the Tulsa Country Club. A dinner will follow at 7:00 P.M. at the Country Club with all members of the Association invited to

attend. Attractive prizes will be given to low-grossing contestants.

(8) A skeet shoot at Southern Hills Country Club, beginning at 2:00 P.M. on Monday, May 16. Contestants may bring their own guns, or use guns furnished by the Country Club.

(9) The annual dinner of the Oklahoma University School of Medicine Alumni Association will be held at 6:30 P.M. on Monday, May 16, with all doctors invited to attend.

(10) Numerous special events and meetings have additionally been scheduled for the convention period including meetings of State specialty groups and the Oklahoma State Board of Medical Examiners.

"The plans for the 1949 meeting have been very carefully made," Dr. W. A. Showman, General Convention Chairman said. "Our committees have been at work since early Fall and we believe we can offer the very best in Tulsa hospitality to the visiting doctors and their wives."

While the convention hotel, The Mayo, has been filled to capacity since March, attractive rooms at reasonable prices are still available at five other large Tulsa hotels, all within a few minutes walk of The Mayo. Reservations should be made at least one week prior to the convention. Doctors are asked to write directly to the Hotel Committee, Tulsa County Medical Society, 1202 Medical Arts Building, Tulsa, stating the type of accommodation required, date of arrival, and length of stay. Confirmations will

be sent directly to the applicant by the hotel to which referred.

"We are asking that all doctors planning to attend cooperate with us by making hotel reservations as early as possible," Dr. John C. Dague, Chairman of the Hotel Committee, said.

Guest speakers for the convention include:

Dr. J. Edward Berk, Assistant Professor of Medicine, Temple, University School of Medicine, Philadelphia, Pa.

Dr. Charles D. Blassingame, widely known otolaryngologist and Associate in Department of Otolaryngology, University of Tennessee School of Medicine, Memphis, Tenn.

Dr. John Albert Key, Professor of Orthopedic Surgery, Washington University School of Medicine, St. Louis.

Dr. William James Gardner, Member of the Staff in Neurological Surgery, Cleveland Clinic Foundation, Cleveland, Ohio.

Dr. Paul A. O'Leary, Director of the Section of Dermatology and Syphilology, Mayo Clinic Foundation, Rochester, Minnesota.

Dr. C. Charles Burlingame, nationally known psychiatrist of Hartford, Connecticut, and formerly Professor of Psychiatry, Yale University School of Medicine.

Dr. Myron E. Wegman, Professor of Public Health, Louisiana State University School of Medicine, New Orleans, La.

Dr. Frank E. Whitacre, Professor of Obstetrics & Gynecology, University of Tennessee School of Medicine, Memphis, Tenn.

Dr. W. William Zuelzer, Director of the famed Childrens Hospital of Detroit, Michigan, and prominent authority in pediatrics.

Members of the Tulsa County Medical Society who will appear on the scientific program include Dr. Berget H. Blocksom, Dr. Donald V. Crane, Dr. Lucien M. Pascucci, Dr. Robert L. Anderson, Dr. W. A. Showman, Dr. Milford S. Ungerman, Dr. Tom R. Turner, Dr. Robert A. Hayne, Dr. Edward L. Moore, Dr. W. Carl Lindstrom, Dr. E. O. Johnson, Dr. E. Malcolm Stokes, Dr. Maxwell A. Johnson, Dr. Emil E. Palik, Dr. George R. Russell, Dr. Walter E. Brown,

GOING TO THE AMA?

Members of the Tulsa County Medical Society planning to attend the Annual Meeting of the American Medical Association at Atlantic City, June 6-10, 1949, are urged to make hotel reservations at once. Write directly to the Sub-Committee on Hotels, 16 Central Pier, Atlantic City, New Jersey. In contrast to previous years, doctors may attend the AMA meetings and exhibits without being a Fellow. Only AMA membership is now required. All members of the Oklahoma State Medical Association are members of the AMA.

Dr. Earl I. Mulmed, Dr. Simon Pollack, and Dr. David V. Hudson.

The scientific program was prepared under the direction of Dr. H. A. Ruprecht of Tulsa, Chairman of the Scientific Works Committee, with the assistance of sectional chairmen.

Several innovations in the convention program may be noted. The President's Annual Dinner Dance, usually the closing feature of the meeting, will be held on the second night—Tuesday, May 17—thereby enabling a greater attendance, particularly of doctors who cannot stay for the entire convention. The dinner following the golf tournament also marks a new social event which is expected to garner a large attendance. Tickets may be purchased for all social events at the registration desk. The General Sessions, formerly a feature of the afternoons, will be held in the mornings with separate sessions in Surgery and Medicine to be held each afternoon. All specialties are represented in the latter two groups, however.

The entire convention, with the exception of certain events for the Auxiliary, will be housed in The Mayo, with registration, exhibits, and scientific sections on the Sixteenth Floor, which will be entirely utilized by the Association.

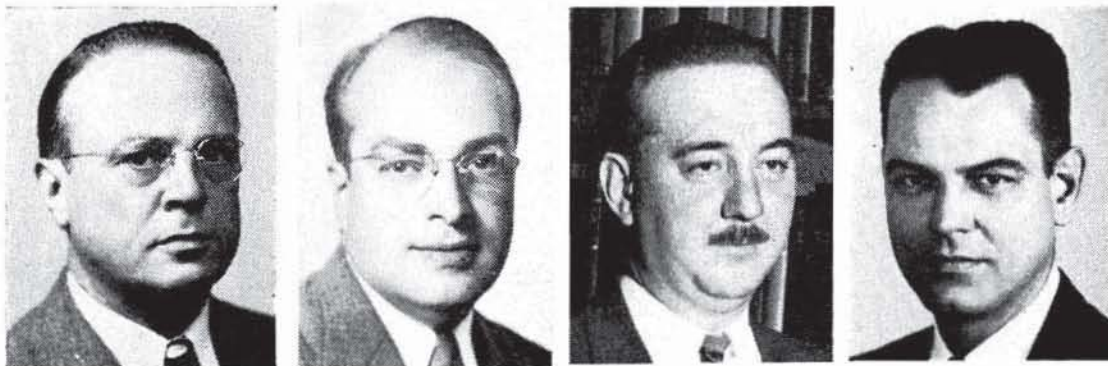
Members of the Tulsa County Medical Society will be registered in advance and may pick up their badges without delay. Others must register through presentation of their 1949 membership card.

RED CROSS BLOOD CENTER SETS NEW DONOR HOURS

The Tulsa County Red Cross Blood Center has announced new hours at which blood donors will be received. Monday to Friday, the Center will be open from 9:00 A.M. to 4:30 P.M., Saturdays 9:00 A.M. to 12:30 P.M., with night hours for special groups on request.

The personnel is now on duty full time with proportionate salary adjustments to compensate for increased and irregular hours. The Red Cross is now collecting blood at an average cost of \$4.50 per pint.

As of April 9, 1949, the Blood Center had taken blood from 1,684 donors since opening its door on January 12. The bulk of these donors was obtained through recruitment programs of firms and organizations. Replacement of blood by recipients or their friends or family now averages 21.7 per cent of that given.



THEY DIRECT CONVENTION PROCEEDINGS

Convention officials for the 1949 Annual Meeting of the Oklahoma State Medical Association in Tulsa, May 15-18, are, left to right: Dr. W. A. Showman, General Chairman; Dr. Homer A. Ruprecht, Chairman of the Scientific Works Committee; Dr. Robert E. Funk, Chairman of the Entertainment Committee; and Dr. John C. Dague, Chairman of the Hotels Committee. Not pictured are Dr. John G. Matt, Chairman of the Publicity Committee; Dr. E. Malcolm Stokes, Chairman of the Golf Committee; and Dr. Marshall O. Hart, Chairman of the Commercial Exhibits Committee.

PRESIDENT'S PAGE

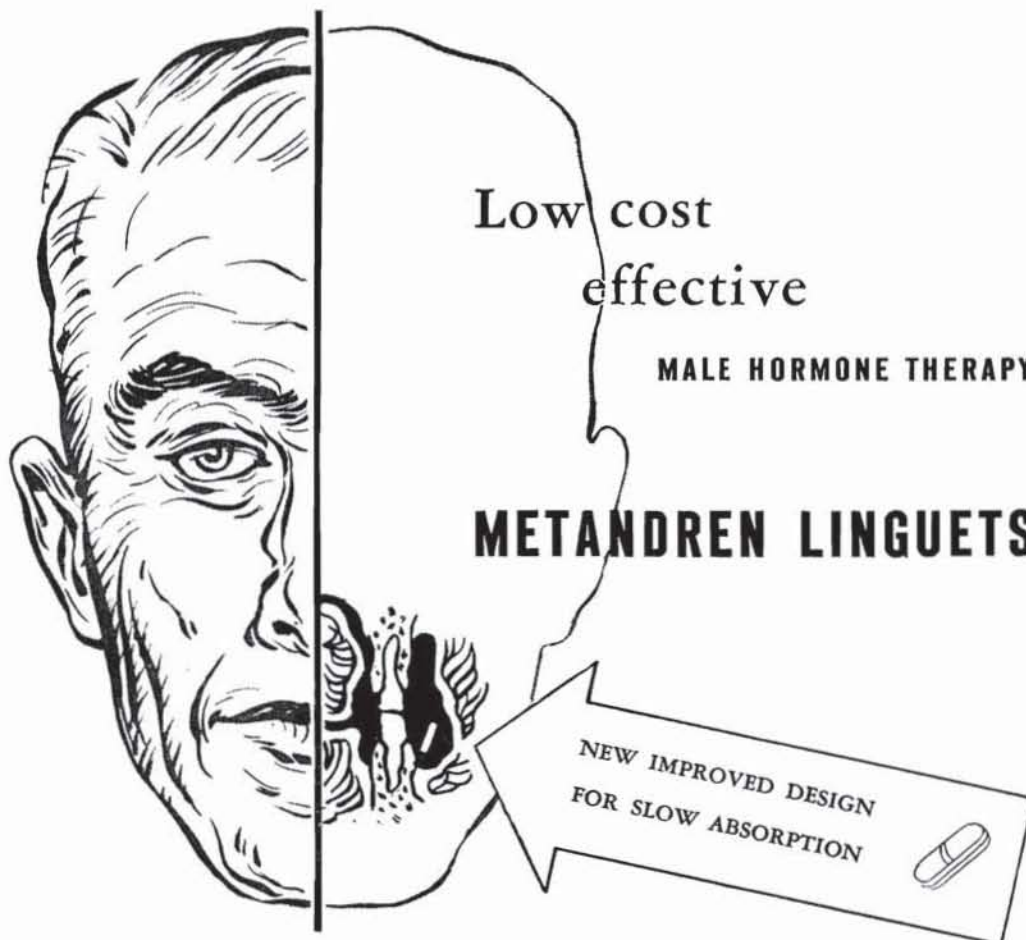
Nearly two years have now passed since the Tulsa County Medical Society first began to consider the acquisition of property to house the Library and Executive Offices and serve as a general headquarters and assembly hall. Three separate committees have given much time to the idea, which bears the formal support of the Society. A number of specific projects have been brought to the attention of the membership and in each case rejected. I do not doubt the wisdom of such action and I am sure the Society rejected these properties for adequate cause. However, we are no nearer a solution of our housing problem than we were two years ago, and at the same time we are two years nearer that acute situation when we must of necessity move to larger quarters. The Library will soon be without necessary shelf space to house its constantly growing volumes of journals and textbooks. Our Executive Offices are already so cramped for storage space that unsightly boxes of supplies and files must be stacked in open corners.

It seems to me there is going to have to be some orientation and subsequent uniformity of thinking among the members in respect to this problem. The major issue of finance must be agreed upon, and speaking personally I can never see the purchase of our own property as an economy move. I am very much in favor of it, but experience teaches that nothing worthwhile with a utilitarian value is gained without paying for it. We must get together on what and where—what type of property, whether we wish to build or buy, and select an approximate location. It must be realized that all of us cannot be pleased; therefore, the majority must be supported. Finally, we must realize that we have a problem of housing which procrastinating is not going to help. The essential first step about this matter is to do some good thinking and study about the problem. When we get into the proper frame of mind, the selection and purchase of property will be easily facilitated.

Sincerely,



President



"Much smaller doses of androgen can be given if it is slowly absorbed in the mouth (than by ingestion) as the drug goes directly into circulation, thus preventing large amounts of the drug being destroyed in the liver."¹

This efficient absorption is made possible by the Metandren Linguet — specially designed to dissolve *slowly* in the space between cheek and gum or under the tongue. As a result, the dosage of methyltestosterone need be only about one-half that required when this male sex hormone is ingested in tablet form.

Adult maintenance dosage is from two to four 5-mg. Linguets daily. Most children need only one-half to one 5-mg. Linguet daily.

• Literature on request.

1. Habel, J. M., Jr.: Va. Med. Monthly, October 1948.

METANDREN, LINGUETS, 5 mg. (white) scored; 10 mg. (yellow) scored — in bottles of 30, 100 and 500.

Ciba PHARMACEUTICAL PRODUCTS, INC., SUMMIT, NEW JERSEY

METANDREN, LINGUETS — Trade Marks Reg. U. S. Pat. Off.

2/1437M



The BULLETIN

GIFFORD H. HENRY, M.D.
Editorial Supervisor

BENJAMIN W. WARD, M.D.

RALPH F. MARTIN, M.D.
Associate Editors

JACK SPEARS, *Managing Editor*



Published monthly on the 3rd day of each month at the executive offices of the Tulsa County Medical Society, 1202 Medical Arts Building, Tulsa, Oklahoma.

Vol. 15

MAY, 1949

No. 5

DEATH OF THE NPC

The dissolution of the National Physicians Committee For The Extension of Medical Service as of April 1, 1949, closes ten years of meritorious service to the medical profession by a group of aggressive and forward-minded doctors who believe in a direct approach to the present-day problems of American Medicine. For a decade the NPC was, in effect, the only group within the Profession which made a positive effort to represent the interests of the American Doctor. It sought to carry on a public relations program that was more properly the function of organized medicine, assuming such duties as a matter of necessity and out of a sense of self-preservation. Many observers will credit the National Physicians Committee with keeping the inroads of State Medicine to the limits which they reached in the period 1939-49, and with preventing the passage of more drastic controls on the free enterprise of medicine. Now, with an awakened and alarmed American Medical Association tardily setting about to administer its own public relations program, the National Physicians Committee has quietly bowed out of the picture, its work well done and the mission accomplished. To the NPC and its workers, especially the Tulsa County Medical So-

ciety's venerated friend, Dr. E. H. Cary of Dallas, are due the thanks of the entire medical profession.

It is unfortunate that the NPC did not get the support to which it was properly entitled from the nation's 150,000 medical doctors. The number of financial contributors was small — in one year as low as seventeen in Oklahoma — and those who served the organization were an equally few who became the work-horses and unsung heroes. It was a situation well expressed by the war-time motto, "Never did so many owe so much to so few." These same men will undoubtedly now become the leaders in the American Medical Association's Public Relations program. The NPC has disbanded because of a reliance upon the AMA for the more effective and unified administration of an identical program. It is to be hoped that individually and collectively, the Profession will give greater support to the AMA than was accorded the National Physicians Committee in its similar program. The threat of State Medicine is more acute now than at any other time in the history of American Medicine. This is a period of strife requiring unity and active participation of every American doctor. No physician can discharge his obligation by the payment of the \$25.00 special assessment alone. The success of the public education program depends on the cooperation of every medical doctor in the nation. Without it, it will fail.

MUTUAL RESPONSIBILITIES

Several appeals have recently been made by officials of the Tulsa County Red Cross Blood Center for the sustained cooperation of all medical doctors in securing the 25 to 35 blood donors necessary for each day's operation of the blood program. The request is simple and more than reasonable: that each doctor who transfuses a patient remind the patient or his family or friends that the replacement of the blood used is a moral responsibility to the community. When blood was obtained from the individual hospital blood banks in operation before the establishment of the Center,

(Continued on Page 20)

D. L. KINCAID
(Kinney)

RAYMOND EWERS

Professional DRUG SHOP

An Ethical Prescription Pharmacy

2110 South Utica

Telephone 3-8169

*City Wide Delivery Service
Two Miles Closer to Southeast Tulsa*

MEDICAL SERVICE SOCIETY OF AMERICA

Membership Roster, Tulsa Chapter

<i>Name:</i>	<i>Representing:</i>	<i>Telephone:</i>
Cecil O. Butler	Sharpe & Dohme	6-6418
William A. Cates	E. R. Squibb Co.	7-1267
William L. Davis	Ayerst, McKenna & Harrison	7-4045
C. R. Doran	Lakeside	Claremore
Lewis Duncan	Parke-Davis	6-7125
Carl Gibson	William S. Merrill Co.	4-0256
R. C. Gooch	Abbott Laboratories	9-4389
J. L. Hedges	Massengill	6-8538
A. L. Kessler	Pitman-Moore	7-4946
Joe Loudonback	Flint-Eaton	7-1418
R. Wayne Morrow	Bauer & Black	2-0598
J. D. Nance	E. R. Squibb Co.	8575
Dan P. Payne	William S. Merrill Co.	6-5643
Tom Sellers	G. D. Searle	4-6991
Preston Walker	Upjohn	3-0464
J. B. Waters	Winthrop-Stearns	5-2577



JAMES SHADDOCK



DEANE RALEY

Ethical Prescriptionists

FIFTEENTH AT QUAKER

Telephone 4-3133

DAIRY COUNCIL OF TULSA

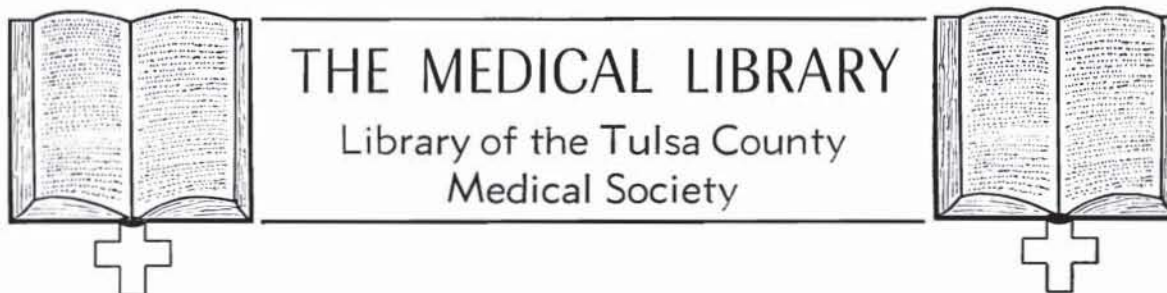
*Promoting national health and human welfare
through knowledge of milk and milk products.*

312 WRIGHT BUILDING

TULSA 3, OKLAHOMA

Telephone 4-8280

Affiliated With National Dairy Council

**Medical Library Committee:**

Morris B. Lhevine, M.D., Chairman

F. L. Flack, M.D.

John G. Matt, M.D.

Fred E. Woodson, M.D.

W. A. Showman, M.D.

Miss Irma A. Beehler, *Librarian*

Telephone 4-1461

GIFTS OF THE MONTH—:

Dr. Hugh J. Evans. Selected writings of the Ochsner Clinic, 1947 and 1948.

Dr. James Stevenson. Modern Trends in Dermatology, edited by R. M. E. MacKenna, M.D., Physician in Charge, Dermatological Department and Lecturer in Dermatology, St. Bartholomew's Hospital, London, England. Published by Paul B. Hoeber, Inc., 1948, pp. 432.

Dr. Theodore S. Williams. Subscription to Surgery, 1949.

Ciba Pharmaceutical Products, Inc. The Ciba Collection of Medical Illustrations, a beautiful compilation of pathological and anatomical paintings prepared by Frank H. Netter, M.D. Published by Ciba Pharmaceutical Laboratories, Inc., Summit, New Jersey, 1948, pp. 222.

Auxiliary to the Tulsa County Medical Society. Subscriptions to the supplements to Tice's Practice of Medicine and Lewis' Practice of Surgery for June, 1949-June, 1950.

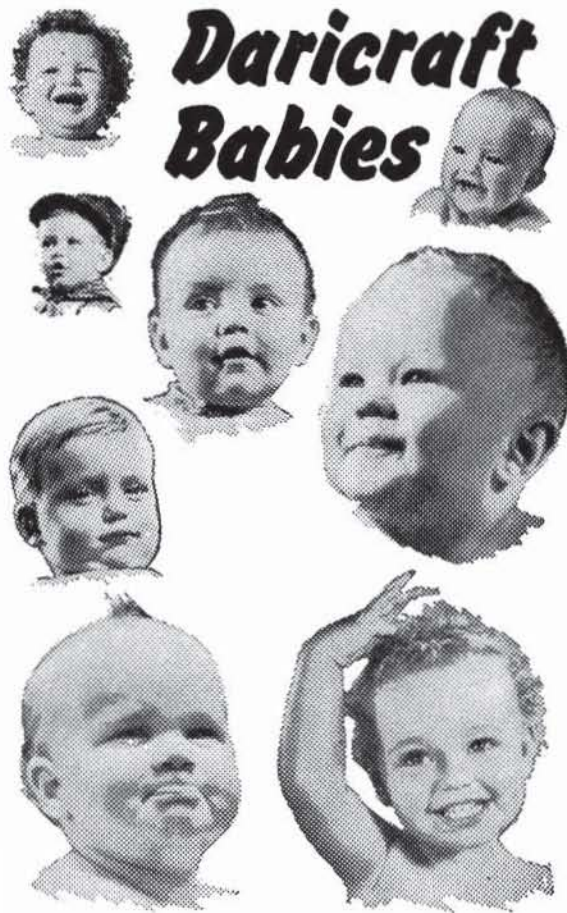
United States Veterans Administration. Technical Bulletins, Series Ten, Volume Two, 1948, and January, 1949. This is the second volume to contain a series of articles which the Veterans Administration has published and distributed to its medical staff. It concerns itself in considerable detail with more specialized discussions than were presented in the earlier volume. Three of these bulletins appear in the present volume, two dealing with shock therapy and one with the management of spinal injuries. The purpose of collecting the manuscripts between boards is to give them permanence and for easier distribution to libraries that are members of the Medical Library Association.

NEW LIBRARY EVENING HOURS

Effective Tuesday, May 3, 1949, the Library of the Tulsa County Medical Society will remain open each Tuesday evening from 6:00 P.M. to 9:00 P.M. This is in answer to requests from a number of members that some evening hours be maintained. If the Library is not patronized during a reasonable trial period, the evening hours will be dropped. For the present evening hours will be only for the one day, each Tuesday.

The Librarian wishes to express appreciation of the opportunity of attending the annual meeting of the Medical Library Association in Galveston, Texas, April 10-14. Approximately 175 delegates were present, and from the scheduled meetings and conversations with other medical librarians she was able to obtain a better picture of medical library work as a whole and to discuss some individual problems.

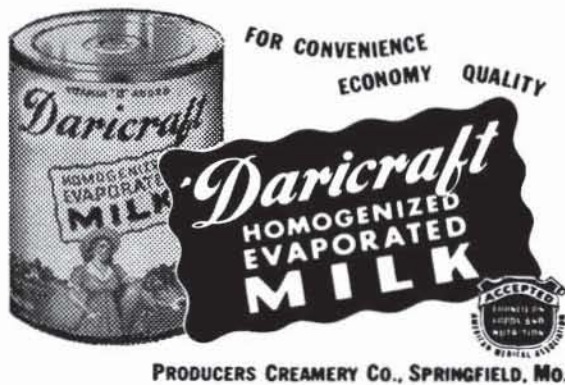
USE YOUR LIBRARY



Daricraft Babies

More and more
doctors are prescribing
Daricraft Homogenized
Evaporated Milk
for babies . . . and for
convalescent diets

Always uniform in quality, safe, sterilized, high in food value and minerals. Contains 400 U. S. P. units Vitamin D per pint of Daricraft. Easily digested.



LIBRARY TRUST FUND PLANS TO BE ANNOUNCED SOON

Plans for a permanent endowment fund for the Library of the Tulsa County Medical Society were being completed last month by the Medical Library Committee. As presently contemplated, the endowment fund will be set up as a legal trust fund and administered by a competent banking institution.

Dr. Morris B. Lhevine, Chairman of the Medical Library Committee, said that the fund would initially utilize gifts of money received during the past ten years from individual members of the Society, the Dr. George R. Osborn Memorial Fund, and some nine small trust funds originally set up several years ago with contributions from lay and civic groups and individuals.

"A permanent endowment fund will permit us to accept a number of gifts which have been offered to the Library," Dr. Lhevine said, "and will at the same time encourage other physicians and individuals to remember the Library in their wills and at such times as they may wish to express appreciation to the medical profession. The income from the fund will enable increased subscriptions to periodicals, purchase of textbooks, and provision for other expenses."

It is contemplated by the Committee to honor donors by engraving their names on an attractive placque or other form of memorial to be placed in the Medical Library.

DR. JAMES B. THOMPSON has been certified as a diplomate of the American Board of Surgery.

DR. JAMES W. WHITE has taken new quarters in the Braniff Building for the practice of Pediatrics.

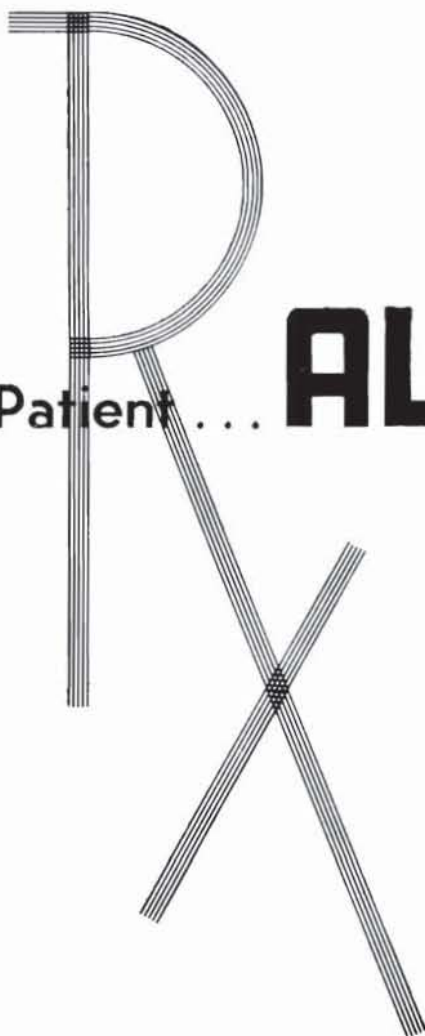
New arrivals: A daughter at the home of DR. AND MRS. WILLIAM S. BIVENS, March 20; twin sons for DR. AND MRS. WALTER E. BROWN, March 25. Congratulations!

DR. R. Q. ATCHLEY has returned from a vacation in Mexico.

Staffing the Mobile Cancer Clinic at Poteau on April 7 were DR. ROBERT L. ANDERSON, DR. HARRY GREEN, and DR. JOHN G. MATT.

Dorsey-Dorsey-Dorsey-Dorsey-Dorsey-Dorsey

For the
Ulcer Patient . . .



AL-SI-CAL

Powder and Tablets

Peptic ulcer patients need maximum acid neutralization and prefer minimum bulk medication. Al-Si-Cal Powder and Tablet meet these requirements. Each teaspoonful powder neutralizes 949cc. N/10 acid in the stomach. Each Al-Si-Cal Tablet neutralizes 237 cc, N/10 acid in the stomach. This plus general sedative in phenobarbital, local sedative in benzocaine and antispasmodic in Belladonna. Al-Si-Cal is the product of choice in peptic ulcer therapy.

Each 60 gr. equivalent to one Teaspoonful contains:

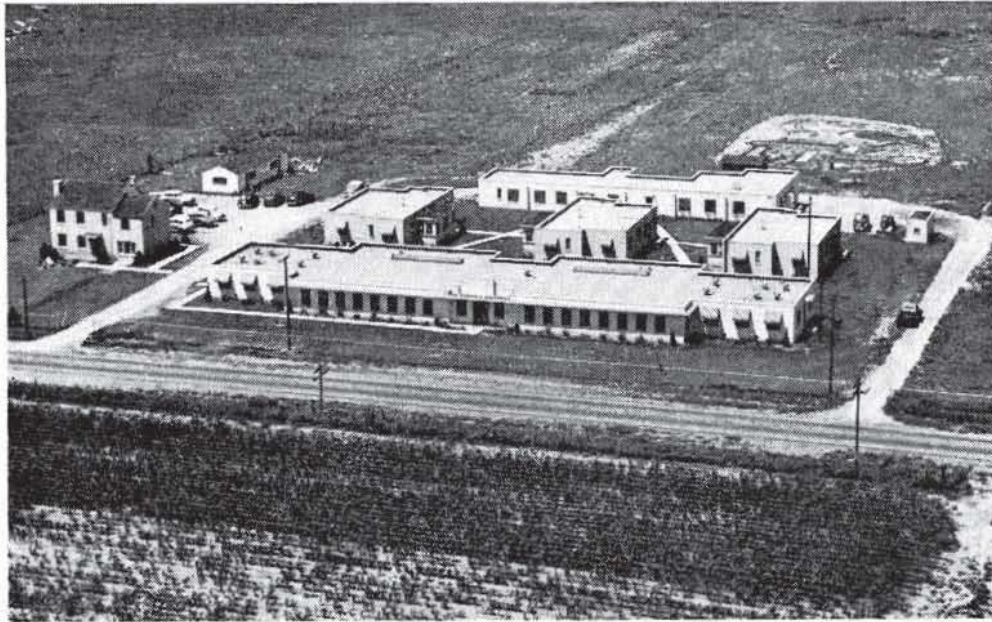
Phenobarbital	1/4 gr.
(Warning: May be habit forming.)	
Extract Belladonna	1/6 gr.
Benzocaine	1/4 gr.
Calcium Carbonate	24 gr.
Magnesium Oxide	10 gr.
Magnesium Trisilicate	15 gr.
Dried Aluminum Hydroxide Gel	10 gr.

Supplied in four ounce containers. Each Al-Si-Cal Tablet contains 1/4 teaspoonful Al-Si-Cal powder.

MANUFACTURERS OF
AMINOPHYLLINE SUPPOSITORY • DORSEY
SOLUTION OF ESTROGENIC SUBSTANCES • DORSEY

THE SMITH-DORSEY COMPANY
Lincoln, Nebraska

BRANCHES AT LOS ANGELES AND DALLAS



THE COYNE CAMPBELL SANITARIUM

NORTHEAST TWENTY-THIRD STREET AND SPENCER ROAD

Route 4, Box 65

Oklahoma City, Okla.

*Prescriptions
Exclusively*

**T. ROY BARNES
D R U G R Y**

Free Delivery

603 S. Boulder

Phone 2-3119

DR. HENRY S. BROWNE TO HEADLINE MAY 9TH PROGRAM

Dr. Henry S. Browne, Tulsa urologist, will be the principal speaker for the Tulsa County Medical Society's regular meeting of Monday, May 9, 1949, at 8:00 P.M., at The Mayo. His subject will be "Problems in the Management of Hydronephrosis." A colored motion picture will also be shown.

A special feature of the May 9 meeting will be a roundtable discussion of state medicine and its probable effect upon the medical doctor. Participants in the series will be Dr. James Stevenson, Delegate to the American Medical Association; Dr. John E. McDonald, President of the Tulsa County Medical Society; Dr. Victor K. Allen, Chairman of the Society's Public Policy Committee; and Dr. Rayburne W. Goen, Member of the Public Speaking Sub-Committee of the Public Policy Committee. The discussion will be moderated by Dr. J. D. Shipp, Chairman of the Professional Relations Sub-Committee.

"Our purpose in arranging this forum is to provide certain information to the physician himself," Dr. Shipp said. "Information which will be of value in educating the patients with whom he comes in daily contact. A recent survey made by the Public Policy Committee indicates many doctors are too vague in their understanding of the proposed federal health insurance program. This forum should be of material help."

Adding that the Forum hoped to stimulate a good "old-fashioned argument," Dr. Shipp said that questions and answers from the floor would be accepted.

Dr. Browne's paper will precede the Forum. A graduate of Tulane University School of Medicine, Class of 1914, Dr. Browne interned at Charity Hospital, New Orleans. Later he served overseas during World War I, including several months with the Army of Occupation in Germany. Returning to Tulsa he entered the specialty of Urology. He is a diplomate of the American Board of Urology, fellow of the American College of Surgeons, president of the South Central Section of the American Urological Association, former president of the Tulsa

County Medical Society, and a member of the Southern Medical Association.

The meeting of May 9 will close the Spring series of scientific meetings of the Tulsa County Medical Society. No meeting will be held on the regular meeting date of May 23, with the Annual Meeting of the Oklahoma State Medical Association, May 15-18, replacing it on the program. The Society will recess during June, July, and August, meeting again on Monday, September 12, 1949.

DR. HAROLD L. BEDDOE has taken up his new duties as City Physician and Director of Laboratories for the Tulsa Police Department. His work will consist in part of application of scientific medical methods of investigation to criminal cases brought to the attention of Tulsa law agencies. Dr. Beddoe's offices will be at 4th & Elgin streets, Tulsa.

DR. EDWARD L. MOORE has been appointed a member of the Public Policy Committee of the Tulsa County Medical Society.



DICK KELLO

Offers

Prompt Motor Delivery

Of Your Prescriptions

Telephone 6-2156

BALL DRUG STORE

College at Admiral

CATRON PHARMACY

Northwest Corner
11TH AND HARVARD

*Reliable
Prescription
Service*

TELEPHONE 6-2101

FRESH — CLEAN — COMPLETE

PRESCRIPTION STOCK

Free Prescription Delivery

GWYN S. CATRON, Owner

ST. JOHN'S HOSPITAL

*A Leading
Institution
In
Oklahoma
Medicine*

1923 SOUTH UTICA
TULSA, OKLAHOMA

TELEPHONE

6-2161

NEW MEMBERS

As this issue of The Bulletin went to press, the following were applicants for membership in the Tulsa County Medical Society.

N. C. Gaddis, M.D. 1530 South Peoria, Tulsa. Medical Degree, Northwestern University Medical School, 1945. Interned Presbyterian Hospital, Chicago, one year. Formerly in practice at Tipton, Oklahoma. Internal Medicine. By transfer from Jackson County Medical Society. Recommended by Dr. K. C. Reese and Dr. Samuel Goodman.

Mason R. Lyons, M.D. Turley, Oklahoma. Medical Degree, University of Oklahoma School of Medicine, 1940. Interned South End Hospitals, Inc. Formerly in practice at Apache, Oklahoma, and Anadarko, Oklahoma. General Practice. Recommended by Dr. E. W. Reynolds and Dr. James C. Peters.

EDITORIAL

(Continued from Page 12)

this was a common practice. Now, the ready availability of blood without charge more than obligates the patient to replace it. The Tulsa County Medical Society believes that every doctor is equally bound to cooperate in the program by urging donations of blood, especially from those who have received it at a time when life and health hung in the balance. Many patients are often not aware of their responsibility in this respect, and from experience it is learned that they appreciate the opportunity of giving blood—of perhaps being the medium of saving the life or encouraging a speedier recovery of another. Just a few words from you, Doctor, will do so much. Won't you cooperate?

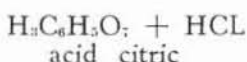
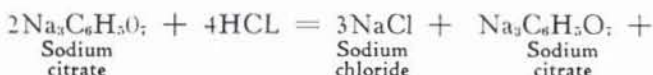
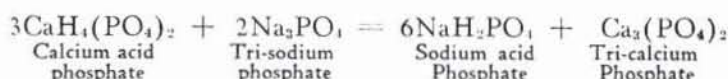
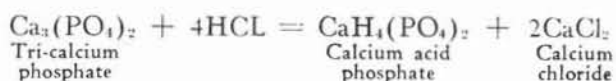
DR. FRANK A. STUART left Tulsa April 20 for a six weeks tour of duty with Army medical units in England and Continental Europe. He will instruct medical officers in new orthopedic techniques and inspect hospital installations in the area. Dr. Stuart expects to return to the United States about June 1.

20 Years Clinical Experience behind TRI-CALSATE IN ULCER THERAPY



For twenty years, careful clinicians have prescribed TRI-CALSATE in the treatment of peptic ulcer, hyperchlorhydria, etc. They have found it effective and safe. TRI-CALSATE is a scientific formula based on the molecular weights of the salts as shown in the following equations

REACTION WITH HCl OF GASTRIC CONTENT



BUFFER EFFECT

Acid Salts	Alkaline Salt
CaCl ₂ (calcium chloride) NaH ₂ PO ₄ (sodium acid phosphate)	Na ₃ C ₆ H ₅ O ₇ (sodium citrate) Possibility of alkalosis minimized. No local alkalinity.

When in aqueous suspension the approximate percentage composition is as follows

Tri-calcium phosphate	35.5
Tri-sodium phosphate crystals (arsenic free) ..	12.5
Sodium citrate crystals	52.0
	100.0

If you are not using this "years tested" scientific formula, try it on your most persistent cases. Find out for yourself how remarkably efficient TRI-CALSATE is. Exceedingly effective in neutralizing gastric HCl, non-constipating, (tri-sodium phosphate counteracts any constipating effects of prolonged use of tri-calcium phosphate) non-irritating and free from all substances alien to the body composition.

Available on Rx in 4½ oz. & 18 oz. bottles. Write on your letterhead for samples and literature.

F. H. PAXTON & SONS, INC.

Manufacturing Pharmaceutical Chemists

469 E. Ohio St.

Chicago 11, Ill.

AKIN'S

We Specialize

In Foods For Every Kind of Diet

Our Health Bakery

A full line of baked goods made from Whole Grain Flour, Soy Flour, Starch, Restricted Flour, Whole Wheat Flour, Rye Flour, and Corn Meal. Wheat Germs, Soy Oil, Honey, and Sea Salt used in all of our bakery products.

LET US FILL YOUR DIETS

722 South Boulder

Phone 7711

HARVARD DRUG STORE

B. C. SHINN, Owner

PHONE 6-2186

*The
Suburban
Prescription
Store*

FREE
PRESCRIPTION
DELIVERY

3244 E. 11th St.
Tulsa

HILLCREST MEMORIAL HOSPITAL

*One of Oklahoma's
finer hospitals*

1653 East Twelfth St.

Telephone 3-2131

TULSA, OKLAHOMA

Send Your Delinquent Accounts Now to

Tulsa's Finest Collection Service

MEDICAL CREDIT BUREAU

Official Collection Agency of The Tulsa County Medical Society

1202 Medical Arts Bldg.

Phone 4-8161



For
**RADIANT HEALTH
BUOYANT ENERGY
SOUND BONES
BEAUTIFUL TEETH**

We Recommend
**Homogenized
'VITAMIN D' MILK**

Fortified With 400 U.S.P. Units
Vitamin D Per Quart, By Vitex Process

Beatrice Foods Co.

215 North Denver

Telephone 4-2471

GOOD WILL

is the one and only asset
that competition cannot
undersell or destroy

CURTAINS PRESCRIPTION LABORATORY

SIXTH AND BOULDER

PHONE 4-7116

A Strict Ethical Pharmacy in Policy and Appearance

SEC. 562, P. L. & R.

U. S. POSTAGE

PAID

TULSA 3, OKLA.

PERMIT No. 13

(Return Postage Guaranteed)

COURTRIGHT IN THE COURT ARCADE

Tulsa's only "Ophthalmic - Dispenser" - - - manufacturing and fitting eye-glasses exclusively for patients of the Eye-Physician (M.D.) - - - visit our complete and modernlv equipped laboratory.

Res. Phone 6-1289

25 YEARS EXPERIENCE

Office Phone 4-1613

MERKEL X-RAY CO.

Exclusive Distributors For—

Westinghouse X-Ray Equipment

Physical Therapy Equipment



Complete Stock
X-Ray and Physical Therapy
Supplies



TULSA

1114 S. Boulder

Tel. 2-4897

OKLAHOMA CITY

1130 N. Hudson

Tel. 2-3522

MID-CONTINENT SURGICAL SUPPLY CO.

Hospital and Physicians
Equipment and Supplies
X-Ray Equipment

*The Complete
Surgical Supply Store*

We carry a complete stock of instruments, rubber goods, surgical dressings, sutures, laboratory stains or reagents, enamel-ware, examining room furniture, wheel chairs, supports and trusses.

PHONE 2-8169

TULSA

610 SOUTH BOSTON

Commercial Printing Company PRINTERS

We Print the Bulletin

OFFICE AND PLANT AT 417 EAST 3RD STREET

R. W. (Bob) HUDSON

Publications, Programs
Advertising Literature,
Office and Factory Forms
Fine Personal Stationery

TELEPHONE 2-2450

LIBRARY
TULSA COUNTY HISTORICAL SOCIETY