

LIBRARY
TULSA COUNTY MEDICAL SOCIETY



THE BULLETIN

of the Tulsa County Medical Society

Build Tulsa



IN THIS ISSUE



London Cancer Expert To
Speak Here November 21st



The Medical Library



Tulsa County Medical Clinic
Observes Tenth Anniversary



Credit Bureau Collections Up

It's Your
RED CROSS
BLOOD CENTER
Encourage Donors

November, 1949

Vol. 15

No. 11

3 new water-soluble liquid vitamin preparations



Poly-Vi-Sol

Each 0.6 cc., the usual daily dose, supplies:

Vitamin A	5000 USP units
Vitamin D	1000 USP units
Thiamine	1.0 mg
Riboflavin	0.8 mg
Niacinamide	5.0 mg
Ascorbic Acid	50. mg

Tri-Vi-Sol

Each 0.6 cc., the usual daily dose, supplies:

Vitamin A	5000 USP units
Vitamin D	1000 USP units
Ascorbic Acid	50 mg

Ce-Vi-Sol

Each 0.5 cc., the usual daily dose, supplies:

Ascorbic Acid	50 mg
---------------	-------

each is

Soluble in Water and other liquids
Scientifically Formulated
Pleasing to the Taste
Convenient to Administer
Ethically Marketed

indications

All of these preparations are ideally suited for the routine supplementation of the diets of infants and children. They can also be administered to adults.

administration

Any of these preparations can be stirred into infant's formula, into fruit juice, milk or other liquid, or mixed into cereal, pudding, or other solid food. They can be given with a spoon or dropped directly into the mouth.

HOW SUPPLIED

These products are available in 15 and 50 cc. bottles, each with an appropriately calibrated dropper.

MEAD'S

MEAD JOHNSON & CO. EVANSVILLE 21, IND., U.S.A.



if she is one of your patients...

...She depends on your help for a speedy return to gainful occupation. Women seeking employment who are nervous, apprehensive and generally distressed by symptoms of the climacteric, may find it difficult to meet competition. "Premarin" offers a solution. Many thousand physicians prescribe this naturally-occurring, oral estrogen because...

1. Prompt symptomatic improvement usually follows therapy.
2. Untoward side-effects are seldom noted.
3. The sense of well-being so frequently reported tends to quickly restore the patient's confidence and normal efficiency.
4. This "Plus" (the sense of well-being enjoyed by the patient) is conducive to a highly satisfactory patient-doctor relationship.
5. Four potencies provide flexibility of dosage: 2.5 mg., 1.25 mg., 0.625 mg. and 0.3 mg. tablets; also in liquid form, 0.625 mg. in each 4 cc. (1 teaspoonful).



While sodium estrone sulfate is the principal estrogen in "Premarin," other equine estrogens...estradiol, equilin, equilinin, hippulin...are probably also present in varying amounts as water-soluble conjugates.

"PREMARIN"



ESTROGENIC SUBSTANCES (WATER-SOLUBLE)
also known as CONJUGATED ESTROGENS (equine)

Ayerst, McKenna & Harrison Limited 22 East 40th Street, New York 16, New York

4911

PROFESSIONAL TRADITION

In compounding a prescription, as in all professional work, experience is an important, even priceless, ingredient.

Be Certain with Curtain

CURTAINS PRESCRIPTION LABORATORY

SIXTH AND BOULDER

PHONE 4-7116

Across the Street North From Medical Arts Bldg.

Drink
Coca-Cola
Delicious and
Refreshing

**THE
DRINK
EVERYBODY
KNOWS**

GETMAN'S

ROY R. GETMAN, Founder



*Sixth and Main Sts.
Phone - 3 6171*

THANKSGIVING

We are thankful to have a modest part in serving YOU who each day and night devote your time, energy and ability to the welfare of mankind that each of those who seek your services may enjoy the blessings of genuine THANKSGIVING.

FREE DELIVERY NIGHT AND DAY.

WE GIVE S & H GREEN STAMPS

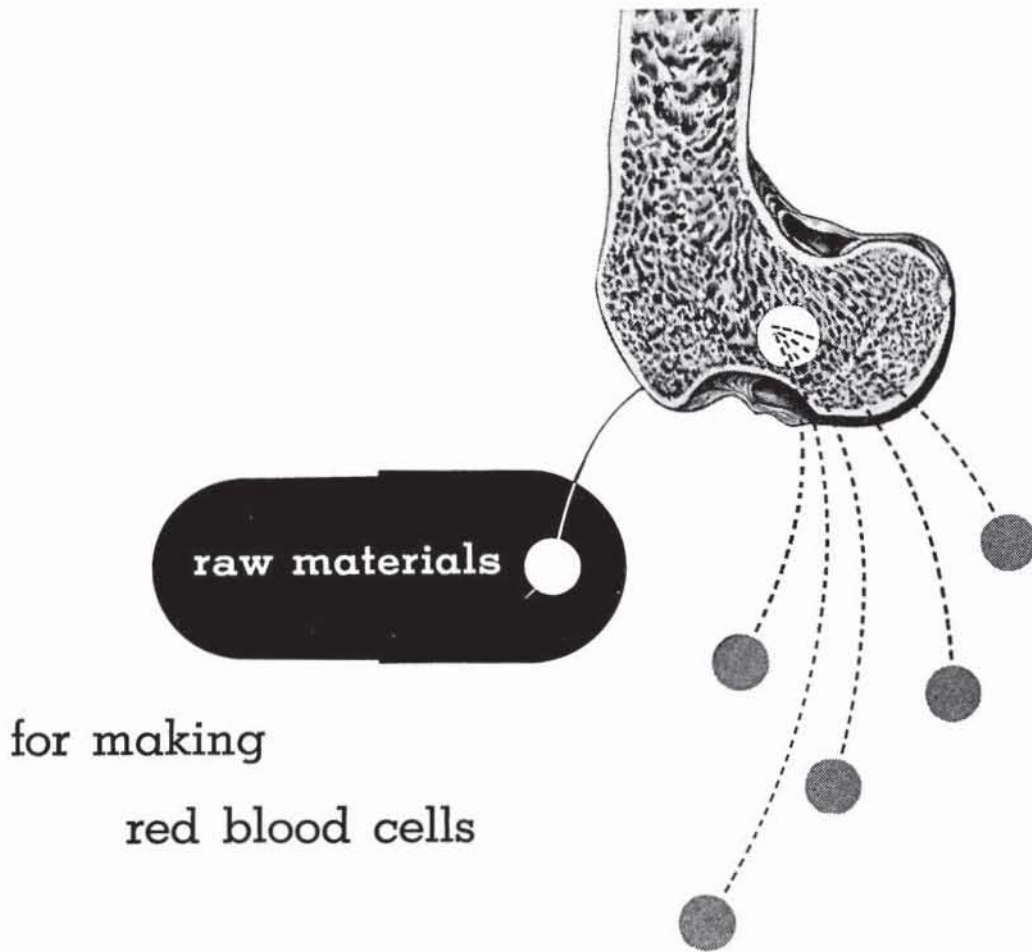
Sponsors of the "Tell Me, Doctor" Radio Broadcasts at 5:15 P.M. each Monday through Friday, KTUL, prepared by The Oklahoma State Medical Association.

CONTENTS

Clinic Observes Anniversary	7
The Medical Library	9
President's Page	10
Credit Bureau Collections Up	11
Editorial	12
November Scientific Programs	14
November Medical Calendar	17
New Members	18
Personals	20

ADVERTISERS

Akin's Natural Foods	18
Ayerst, McKenna & Harrison	3
Ball Drug Company	18
Beatrice Foods, Inc.	27
Catron Pharmacy	23
Ciba Pharmaceutical Products	15
Coca-Cola Bottling Co.	4
Commercial Printing Co.	28
Courtright-Optician	28
Coyne Campbell Sanitarium	16
Curtain's Prescription Laboratory	4
Daricraft	20
Dairy Council of Tulsa	27
Eli Lilly & Company	6
Getman Drug Store	5
Harvard Drug Store	22
Hillcrest Hospital	22
Mead Johnson & Company	2
Medical Arts Prescription Shop	14
Medical Service Society	13
Merkel X-Ray Co.	28
Mid-Continent Surgical Supply Co.	28
F. H. Paxton Co.	22
Professional Directory	24
Professional Drug Shop	23
Raley-Shaddock Pharmacy	13
Smith-Dorsey Co.	19
Springer Clinic	25
St. John's Hospital	23
T. Roy Barnes Drugry	16
Van Pelt and Brown	21



Liver-stomach concentrate

iron

vitamin B complex

. . . these are known raw materials for erythrocyte maturation. All are contained in Pulvules 'Lextron F.G.' (Liver-Stomach Concentrate with Ferrous Gluconate and Vitamin B Complex, Lilly). "F.G." refers to ferrous gluconate, a well-tolerated iron salt preferred by many clinicians. Pulvules 'Lextron F.G.' prescribed according to individual requirements will adequately treat any type of anemia which responds to liver or iron therapy. Available in bottles of 84 or 500.

ELI LILLY AND COMPANY
Indianapolis 6, Indiana, U.S.A.

THE BULLETIN

OF THE

TULSA COUNTY MEDICAL SOCIETY

John E. McDonald, M.D., *President*Fred E. Woodson, M.D., *President-Elect*W. A. Showman, M.D., *Vice-President*John G. Matt, M.D., *Secretary-Treasurer*Jack Spears, *Executive Secretary*

Vol. 15

TULSA, OKLAHOMA, NOVEMBER, 1949

No. 11

CLINIC OBSERVES 10TH ANNIVERSARY

Tulsa County Medical Society Project For Care of Indigents Completes Ten Years of Community Service. Clinic Has Saved Taxpayers Half-Million Dollars Since 1939.

The Tulsa County Medical Society this month will observe the tenth anniversary of the opening of the Tulsa County Medical Clinic, indigent medical care center sponsored and staffed by the Society. In that decade members of the Society have contributed their services for more than 150,000 patient visits at the Clinic plus several thousand additional cases hospitalized for medical and surgical attention.

The formal opening of the Clinic at 212 West 6th Street on November 1, 1939, climaxed a long hard fight by the Society to separate indigent medical care from political controls. Abuses of a former system, plus lack of concentrated medical facilities, brought about a campaign for the Clinic early in 1938. At that time the Society proposed to equip and maintain a central treatment center with professional services to be contributed without charge by volunteer members of specialty panels. Nearly two years elapsed before the political objections to the arrangement were overcome and the physical facilities installed.

The basic format of operation of the Clinic has remained unchanged through the ten years. The Society originally provided all necessary professional equipment. The initial investment amounted to some \$6,000 in instruments, tables, laboratory and x-ray supplies. This equipment has been maintained through the years, the most recent addition to Clinic facilities being an electrocardiograph purchased last month in cooperation with the Tulsa County Heart Association. Periodically the Clinic is repainted and the

furniture refinished and repaired.

To care for the indigents of Tulsa County, specialty panels were created, each to meet at least once each month and most once each week. Prominent Tulsa specialists volunteered their services and many of those who staffed the first clinics ten years ago are still contributing their services each week. To these specialty clinics patients are referred as necessary after a preliminary examination by the County Physician or his assistant.

The actual direction of the Tulsa County Clinic is vested in the County Physician, a salaried employee who is responsible for the efficient management of all Clinic functions. He is responsible to the Tulsa County Medical Society, who nominates him under terms of a standing agreement with the Board of County Commissioners. An assistant county physician, three nurses, laboratory technician, and two clerks are employed to assist in the operation of the Clinic. A full-time pharmacist dispenses prescriptions at the Clinic's own drug department located in the basement of the Clinic.

As a liaison between the Clinic and the Society, a Clinic Committee is annually appointed to advise with the County Physician and to represent the Tulsa County Medical Society in all matters pertaining to the Clinic.

The Clinic utilizes two floors in the rear wing of the Community Welfare Building at 6th and Cheyenne streets. The main, or first floor, houses the private offices of the County Physician, his as-



Remember when? Ten years ago officers of the Tulsa County Medical Society gathered to announce the formal opening of the Tulsa County Medical Clinic, a project upon which Tulsa doctors had set their hearts. Dr. A. Ray Wiley, who served as President in 1939 stands at the extreme right. Others, left to right are Dr. R. Q. Atchley, vice-president, Dr. Roy L. Smith, secretary-treasurer (now practicing in Bryan, Texas), the late Dr. A. W. Pigford (who was the first Chairman of the Clinic Committee and one of the wheelhorses in the project), Dr. Walter S. Larrabee, the late Dr. Ned R. Smith (rear), Dr. J. C. Brogden, and Dr. M. J. Searle. Dr. Smith is holding in his hand the announcement concerning the Clinic, which is the object of the attention in this abbreviated photograph from the Society's old files.

sistant, and the nursing staff, as well as several examination rooms and a room equipped with hospital beds for temporary care of Clinic patients. On the basement floor is to be found a well-equipped x-ray department, pathological laboratory, record room, offices of the clerical staff, the pharmacy, and waiting room.

Except for the medical equipment, which is owned and maintained by the Society, all expenses of operation are borne by the Board of County Commissioners of Tulsa County. An annual budget submitted each July provides for necessary costs of operation for a fiscal period beginning July 1.

Where hospitalization is necessary for Clinic patients, they are admitted to acceptable Tulsa hospitals and given ward care. Here again, expenses are borne by the Board of County Commissioners. Surgery is performed by the surgical staff on charity service, and other types of care are supplied by other specialists on service. There is no charge made for this professional attention.

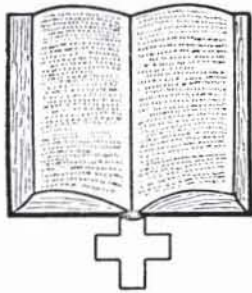
It is estimated that the method of caring for the indigent has resulted in an annual savings of approximately \$50,000, or in ten years a total of some half-million dollars. If paid for at the regular professional fee rates, this service will probably exceed one million dollars in value. The savings results from the fact that the volunteer staff is not paid for its services at the Clinic and at the hospitals,

from purchase of drugs at cost and dispensation at the Clinic pharmacy, from concentration of the indigent medical facilities, and from elimination of costly political abuses which have been known to exist in the past.

The relationship of the Tulsa County Medical Society and the Board of County Commissioners has been most pleasant and cooperative, particularly in recent years, and the Clinic now appears to be well established with the public. Dr. J. Jeffrey Billington has served as County Physician throughout the entire ten years and his experience and professional qualifications have been invaluable.

"I would like to thank, on behalf of the Tulsa County Medical Society, those members who have contributed so much to the success of the Clinic," said Dr. John E. McDonald, President, in a statement issued last month. "Their interest has made possible the maintenance of a medical center where indigent patients receive the same degree of qualitative medical care that the wealthiest private patient may enjoy. They are to be commended and sincerely thanked by all and by the community, which has benefited so much from their contributions of time and talent."

Congratulations to DR. W. J. BRYAN for his splendid work as Director of the Tulsa County diabetes detection drive during National Diabetes Week.



THE MEDICAL LIBRARY

Library of the Tulsa County
Medical Society



Medical Library Committee:

Morris B. Lhevine, M.D., Chairman

W. A. Showman, M.D.

Fred E. Woodson, M.D.

John G. Matt, M.D.

F. L. Flack, M.D.

Miss Irma A. Beehler, *Librarian*

Telephone 4-1461

GIFTS OF THE MONTH—:

U. S. Veterans Administration, Washington, D. C. Minutes of the Seventh Streptomycin Conference, held in Denver, Colorado, April 21-24, 1949.

Golden Jubilee World Tribute to Dr. Sidney V. Haas, in honor of his pioneering contributions to celiac therapy and the treatment of the hypertonic infant. New York, 1949.

Dr. James Stevenson, Oklahoma delegate to the American Medical Association, has placed in the Medical Library a copy of the October 11, 1949, issue of *Look* magazine containing an article entitled, "What is the A.M.A.?" by Harold B. Clemenko. It is the inside story of the widespread work of the American Medical Association and its achievements that have helped to make Medicine in the United States second to none in the world. It explains the activities of the various bureaus, councils, and committees and lists the items of its famous twelve-point program for the improvement of the nation's health. It will be of interest to everyone within the medical profession, and most educational to lay persons.

RECENT ACQUISITIONS—:

The New Gould's Medical Dictionary. Edited by Harold W. Jones, M.D., Normand L. Hoerr, M.D., and Arthur Asol, Ph.D., with assistance of an editorial board of eighty contributors. First edition, Blakiston and Company, Philadelphia, 1949.

RECENT PUBLICATIONS BY MEMBERS OF THE TULSA COUNTY MEDICAL SOCIETY:

Harold J. Black, M.D., A case of bleeding peptic ulcer in Meckel's diverticulum. Proceedings of the Staff, Hillcrest Memorial Hospital, Volume 6:85, July 1949.

Robert A. Hayne, M.D., and Tom R. Turner, M.D. Newer Concepts of Epilepsy. Journal of the Oklahoma State Medical Association, Volume 42:426, October, 1949.

Lucien M. Pascucci, M.D. Intra-ventricular Brain Tumors. Journal of the Oklahoma State Medical Association Volume 42:428, October, 1949.

Milford S. Ungerman, M.D. The Electroencephalogram in Severe Head Injuries With Tantalum Cranioplasty. Journal of the Oklahoma State Medical Association, Volume 42:433, October, 1949.

Have you read Grace Crile's wonderful biography of her husband, "George Crile"? Or Cook's masterpiece of historical reporting, "Florence Nightingale," the life of the famous nurse? Or viewed Hillier's fine photographic history, "Surgery Through The Ages"? Or read the story of American Navy doctors in action, "Doctors Aweigh"? No? You'll find them in the Medical Library, just the thing for a rainy night at home.

CREDIT BUREAU COLLECTIONS SOAR

Reorganized Medical Credit Bureau Reports Collections Up 70 Per Cent in First Six Weeks. Many New Clients Obtained as Collection Figures Climb.

Gross collections of the Medical Credit Bureau, official collection agency of the Tulsa County Medical Society, have risen 70 per cent in the first six weeks since its recent reorganization. By the end of October, as this issue of *The Bulletin* went to press, collection figures were expected to be double that of a similar period ninety days ago.

Many new clients have been added to the Bureau's already large list as a result of rising collection figures with many members of the Tulsa County Medical Society promising to avail themselves of the opportunity to secure expert and experienced collection service at fees below those charged by most Tulsa credit and collection agencies.

The reorganization of the Medical Credit Bureau was effected September 1, 1949, creating a separate personnel to handle collections apart from the activities of the Tulsa County Medical Society's Executive Offices. This change was in line with recommendations of the Medical Credit Bureau Committee made last July, and subsequently approved by the membership, in which it was noted that the work of the Society had become too large to permit the personnel to continue to handle Medical Credit Bureau functions as well. Mrs. Zelma Fink and Mrs. Okla Pottier, experienced Tulsa collection and credit women, were subsequently employed to direct Medical Credit Bureau activities.

"We are delighted with the progress and results which have been obtained by our new personnel," Dr. Paul Grosshart, Chairman of the Medical Credit Bureau Committee, said last month. "Every member of the Tulsa County Medical Society can now refer his accounts to the Bureau with the full assurance that they will be handled in a prompt and efficient manner. The fact that collections are almost doubled within a short space of time should be a source of complete confidence."

The Medical Credit Bureau is owned and operated by the Tulsa County Medical Society. Founded in 1939, it offers a specialized collection service for medical and dental accounts only. Here, such accounts do not compete with commercial accounts for collection and the experience gained in handling only medical and dental accounts permits a greater degree of efficiency.

The Bureau is operated on a non-profit basis, permitting collection fee schedules to be lower than those in effect at most commercial collection agencies in Tulsa. Accounts of more than \$3.00, less than three years old, and in Tulsa proper can be collected at a fee of one-third of the gross amount collected. Only out-of-town and legal accounts, as well as those less than \$3.00 or outlawed, draw the maximum fee of 50 per cent. About 75 per cent of all accounts are collected at the one-third rate. The collection charge is entirely contingent upon collection.

The Bureau has agents in all cities and towns in the United States and retains the services of a experienced attorney to handle legal action which may become necessary.

To refer delinquent accounts, clients may call the Bureau at 3-6331 and request that official listing sheets be mailed, or they may be sent on a plain sheet of paper stating the name in full of the patient, responsible person, last known address, last date of account (either when last payment was made or services rendered), and amount. Any additional information, such as place of employment, telephone number, etc., will be appreciated.

A monthly report of all collections is made to each client with check attached for the proceeds. The expense of collecting delinquent medical accounts is a legitimate business expense and should always be included in computation of annual income tax returns.

The BULLETINGIFFORD H. HENRY, M.D.
Editorial Supervisor

BENJAMIN W. WARD, M.D.

RALPH F. MARTIN, M.D.

*Associate Editors*JACK SPEARS, *Managing Editor*

Published monthly on the 3rd day of each month at the executive offices of the Tulsa County Medical Society, 1202 Medical Arts Building, Tulsa, Oklahoma.

Vol. 15 NOVEMBER, 1949 No. 11

MEDICAL MEETING TONIGHT

Within another month it will again be time to take the official roll book of the Tulsa County Medical Society to determine which of the Society's 253 members have met the constitutional requirement to hold office — attendance at 50 per cent of the regular scientific meetings held during the current year. If the usual record again repeats, as it has for more than fifteen years, less than 25 per cent or one-fourth will be on the eligible list. A good half of the members will have attended less than four of the sixteen meetings held this year. And yet, probably less than a half-dozen in the entire Society will have failed to come at least one time.

For more than a decade the officers of the Society have pondered the cause of this situation and its solution. It is not difficult to obtain from the membership itself some expressions of opinion on the matter. Many reasons are given for failure to attend, some of which are reasonable and valid, others being mere excuses which cannot be justified. The solution is not readily forthcoming, and many of the doctors who are the Society's leaders believe the problem beyond remedy.

Admittedly, it is not possible to arrange programs which are going to appeal every time to 100 per cent of the membership. With such a diversified representation from a wide range of medical special-

ties, the Society cannot expect to attain such a goal. On the other hand a conscientious Program Committee annually devotes many hours to the selection of subjects and guest speakers which have the greatest general appeal to the membership at large. There is very little complaint against the programs, as a whole, of the Society, and looking back over a period of years the list of prominent physicians who have spoken before the group constitutes a regular Who's Who In Medicine. The subjects are modern and practical, and indeed more emphasis is placed upon subject matter and its practical value than mere reputation of a visiting speaker.

We are of the opinion that the Society programs and their content are not the principal cause of the relatively poor attendance. While an occasional program may have a limited direct appeal to a particular specialty, most members recognize that a sound medical education is built upon an overall knowledge of medicine. While some stay at home because the subject is out of their specialty, many more attend from a sincere desire to learn and profit from what is going on in not one but all fields of medicine.

If the program content or selection of the particular speaker is not the cause, what then can explain an average of only 35 per cent of the membership at any one meeting? We are well aware that the Society meeting is but one of many. Hospital staffs, specialty groups, and Society committee meetings take many evenings. Professional and social obligations add their demands. Hours of practice are often long and extend into the evening hours. The result is few evenings at home, often too few to keep abreast of necessary medical reading. When this condition actually prevails, it is a valid consideration. When it becomes an excuse for consistent non-attendance, it obscures an effort to get at the true cause of failure of members to attend.

The scientific programs of the Society represent one of the principal methods by which Tulsa doctors keep abreast of the progress of medicine. Much time and effort goes into their preparation, as well

(Continued on Page 18)



JAMES SHADDOCK



DEANE RALEY

Ethical Prescriptionists

FIFTEENTH AT QUAKER

Telephone 4-3133

MEDICAL SERVICE SOCIETY OF AMERICA

Membership Roster, Tulsa Chapter

<i>Name:</i>	<i>Representing:</i>	<i>Telephone:</i>
Cecil O. Butler	Sharpe & Dohme	6-6418
William A. Cates	E. R. Squibb Co.	7-1267
William L. Davis	Ayerst, McKenna & Harrison	7-4045
C. R. Doran	Lakeside	Claremore
Carl Gibson	William S. Merrill Co.	4-0956
R. C. Gooch	Abbott Laboratories	9-4389
J. L. Hedges	Massengill	6-8538
A. L. Kessler	Pitman-Moore	7-4946
Dave Lankford	Lederle	7-3723
Joe Loudenback	Flint-Eaton	7-1418
R. Wayne Morrow	Bauer & Black	2-0598
J. D. Nance	E. R. Squibb Co.	8575
Dan P. Payne	William S. Merrill Co.	6-5643
Tom Sellers	G. D. Searle	4-6991
Preston Walker	Upjohn	7-6464
J. B. Waters	Winthrop-Stearns	9-4045



A New and Better HEARING AID Is HERE at Last!

We're proud to announce that we have been selected to offer the great, new Cleartone Hearing Aid in this community. We believe this precision instrument is the finest available, and that it will help the hard-of-hearing recapture the blessings and joys of clear, distinct hearing. The Cleartone is precision made inside and out. Small enough to hide in your vest pocket, it amplifies sound with amazing power. The Cleartone offers the ultimate in performance, appearance and economy of operation. We'll be proud to demonstrate this fine instrument for you in our offices or in your home. Phone or write for FREE booklet that tells the whole story.

MEDICAL ARTS SURGICAL SUPPLY

Medical & Dental Arts Bldg.

604 S. Boulder

Phone 4-0121

TULSA

OKLAHOMA

BRITISH CANCER SPECIALIST SPEAKS HERE NOVEMBER 21

The Tulsa County Medical Society will conclude its 1949 schedule of scientific medical lectures with two presentations during the month of November one of which will feature an internationally known cancer specialist of London, England.

The two programs are:

Monday, November 21, 1949. "The Challenge of Cancer." Speaker, Dr. R. Willis, Pathologist to the Royal Cancer Hospital, London, England.

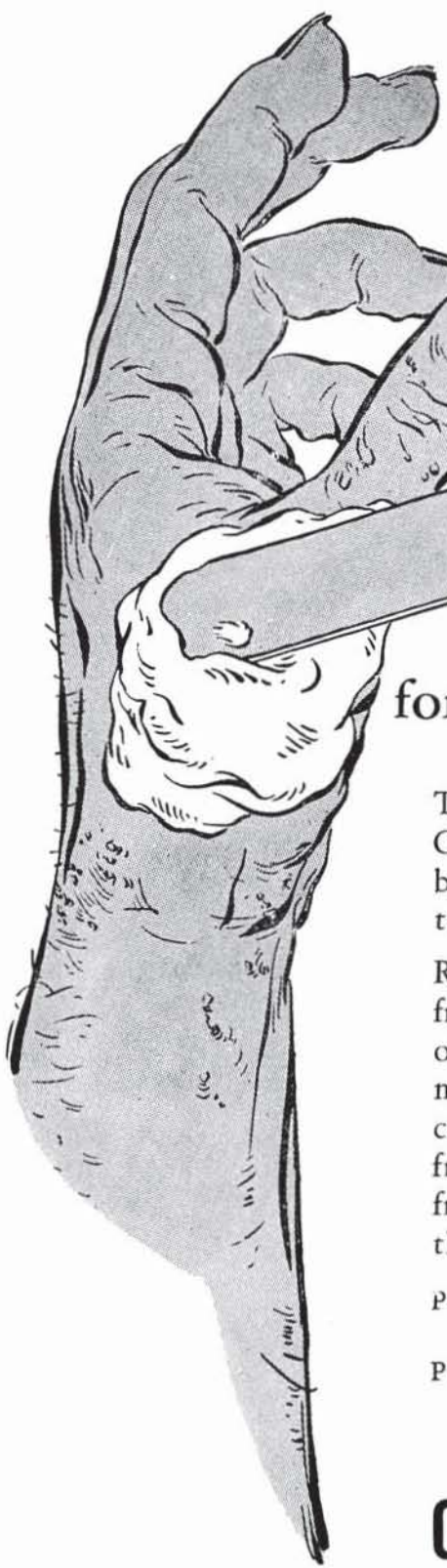
Monday, November 28, 1949. "The Use of Surgery for Peptic Ulcers." Speaker, Dr. Edward L. Moore, surgeon, Tulsa, Oklahoma.

The program featuring Dr. Willis will be on the third Monday of November and the regular staff meeting of St. John's Hospital, usually held on that date, will be on Monday, November 14, 1949, at the usual time. This change is necessary in order to take advantage of Dr. Willis' speaking tour.

For many years a prominent figure in British medical circles, Dr. Willis is holder of the Sir William H. Collins Chair as Professor of Human and Comparative Pathology at the Royal College of Surgeons, London. He is pathologist in chief to the Royal Cancer Hospital of London, world famed clinical and research center for the treatment of malignancies. He has lectured considerably in Europe, America, and Australia, and for a time was a member of the faculty of the University of Melbourne School of Medicine. His textbook, "The Pathology of Tumors," is a standard authority, and widely read in this country. Dr. Willis will answer questions in an informal discussion period following his lecture, although there will be no formal discussant.

Dr. Willis is appearing in this country as the guest of the American Cancer Society and the University of Texas School of Medicine and will lecture considerably in a three-week speaking tour in the Southwest. On Tuesday, November 22, 1949, he will again appear at the morning session of the St. John's Tumor Clinic. Dr. Willis will be introduced by Dr.

(Continued on Page 20)



Pyribenzamine

CREAM or OINTMENT

for prompt relief of itching

Topical application of Pyribenzamine Cream or Pyribenzamine Ointment has been found "a valuable adjunct"¹ in contact dermatitis.

Relief of burning and itching, resulting from contact with such substances as plant oleoresins, soaps, cosmetics and chemicals, may be expected in a high percentage of cases. In some instances, more complete freedom from these symptoms has resulted from simultaneous use of oral and topical therapy with Pyribenzamine.

PYRIBENZAMINE CREAM, water-soluble base, 2%, in jars of 50 grams and 1 pound.

PYRIBENZAMINE OINTMENT, anhydrous base, 2% in jars of 50 grams and 1 pound.

1. Carrier, Krug, Lott & Glenn: *Journal-Lancet*: June, 1948

Ciba PHARMACEUTICAL PRODUCTS, INC., SUMMIT, NEW JERSEY

PYRIBENZAMINE (brand of tripeleminamine)

Trade Mark Reg. U. S. Pat. Off.

2/1327M



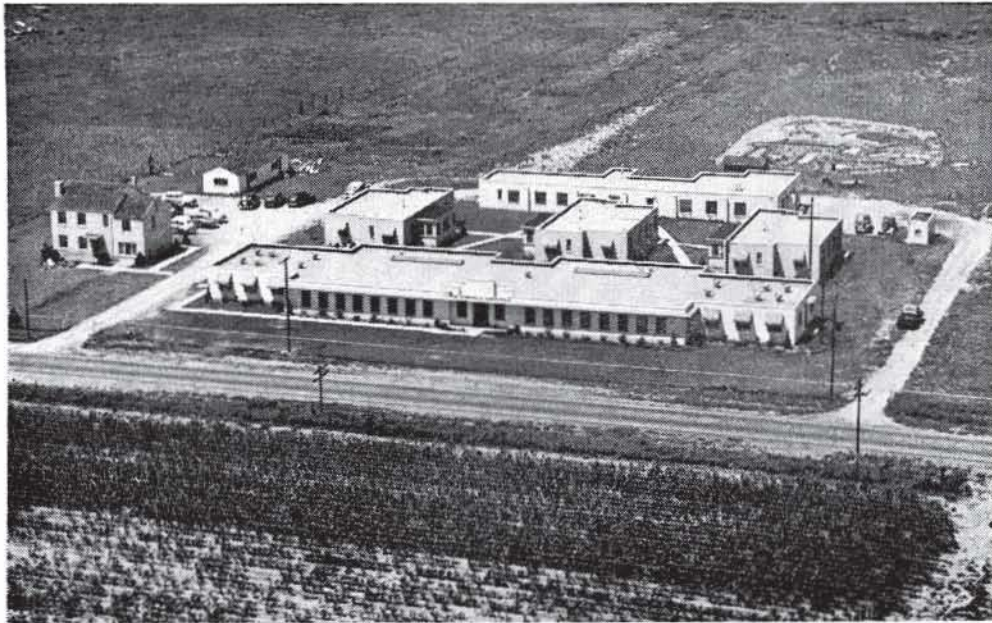
*Prescriptions
Exclusively*

**T. ROY BARNES
D R U G R Y**

Free Delivery

603 S. Boulder

Phone 2-3119



THE COYNE CAMPBELL SANITARIUM

NORTHEAST TWENTY-THIRD STREET AND SPENCER ROAD

Route 4, Box 65

Oklahoma City, Okla.

NOVEMBER MEDICAL CALENDAR

TUESDAY, November 1st:

Blue Cross hospital insurance, Medical & Dental Office Assistants Group, quarterly premium due and payable on this date at 1202 Medical Arts Building, Tulsa. Final date for payment, November 10, 1949.

SATURDAY, November 5th:

Medical Broadcast, "New Frontiers of Surgery," Radio Station KOME, 6:15 P.M. Speaker, Dr. H. Lee Farris.

MONDAY, November 7th:

Hillcrest Hospital Staff Meeting.

WEDNESDAY, November 9th:

Public Policy Committee Meeting, Tulsa County Medical Society, 1202 Medical Arts Building, Tulsa, 1:00 P.M.

SATURDAY, November 12th:

Medical Broadcast, "Surgery of the Eye," Radio Station KOME, 6:15 P.M. Speaker, Dr. Charles G. Stuard.

MONDAY, November 14th:

St. John's Hospital Staff Meeting. (Changed from regular meeting date to permit special program for the Tulsa County Medical Society on November 21, 1949).

TUESDAY, November 15th:

Copy deadline for the December issue of The Bulletin.
Board of Trustees Meeting, Tulsa County Medical Society, 1202 Medical Arts Building, Tulsa, 1:00 P.M.

SATURDAY, November 19th:

Medical Broadcast, "How's Your Health?" series, 6:15 P.M. Subject to be announced. Speaker, Dr. Herbert S. Orr.

MONDAY, November 21st:

Scientific Meeting, Tulsa County Medical Society, The Mayo, 8:00 P.M. Subject: "The Challenge of Cancer." Speaker, Dr. R. Willis, London, England. No business meeting.

THURSDAY, November 24th:

The Executive Offices of the Tulsa County Medical Society will be closed in observance of Thanksgiving Day.

SATURDAY, November 26th:

Medical Broadcast, "Heart Disease," Radio Station KOME, 6:15 P.M. Speaker, Dr. Safety R. First.

MONDAY, November 28th:

Scientific Meeting, Tulsa County Medical Society, The Mayo, 8:00 P.M. Subject, "The Use of Surgery for Peptic Ulcers." Speaker, Dr. Edward L. Moore.

WEDNESDAY, November 30th:

Blue Cross hospital insurance, Physicians & Surgeons Group, semi-annual premium due and payable on this date. Final date for payment, December 10, 1949. Payment should be made at 1202 Medical Arts Building, Tulsa.

NEW MEMBERS

The following physician was elected to membership in the Tulsa County Medical Society at the regular meeting of Monday, October 24, 1949.

Walter B. Sanger, M.D. 211 Medical Arts Building, Tulsa. Medical Degree, University of Oklahoma School of Medicine, 1935. Interned Sacred Heart Hospital, Spokane, Washington. In practice at Spokane, 1936-37; Eastern Oklahoma State Hospital at Vinita, 1937-39; Picher,



DICK KELLO

Offers

Prompt Motor Delivery
Of Your Prescriptions

Telephone 6-2156

BALL DRUG STORE

College at Admiral

Oklahoma, 1939-46, excluding service with the United States Navy Medical Corps; resident in obstetrics, Bon Secours Hospital, Baltimore, Maryland, 1946-49. Specialty, Obstetrics and Gynecology. By approved transfer from Ottawa County Medical Society. Recommended by Dr. Robert E. Funk and Dr. E. O. Johnson.

EDITORIAL

(Continued from Page 12)

as a substantial sum of money. We feel that these programs should have a top-drawer priority upon the time of every member of the Tulsa County Medical Society. The benefit and enjoyment will be yours and ultimately that of your patient. We feel that the average annual attendance of four meetings out of sixteen is a deplorable record. We cannot recognize the application of 16 evenings out of the year's 365 as an undue hardship, or the present four as being indicative of excessive attendance.

Quite often regular attendance is a matter of habit, and a good habit once gained is seldom broken. Too many of us are out of the habit of going to the Tulsa County Medical Society meetings. Let's get back into that desirable habit. You won't regret it.

DR. MAURICE J. SEARLE has returned from New York where he visited his daughter, Betty Searle.

DR. W. ALBERT COOK has returned from an automobile tour of the Dakotas.

DR. H. D. MURDOCK is touring England and Continental Europe. He expects to return on November 21, 1949.

AKIN'S

We Specialize

In Foods For Every Kind of Diet

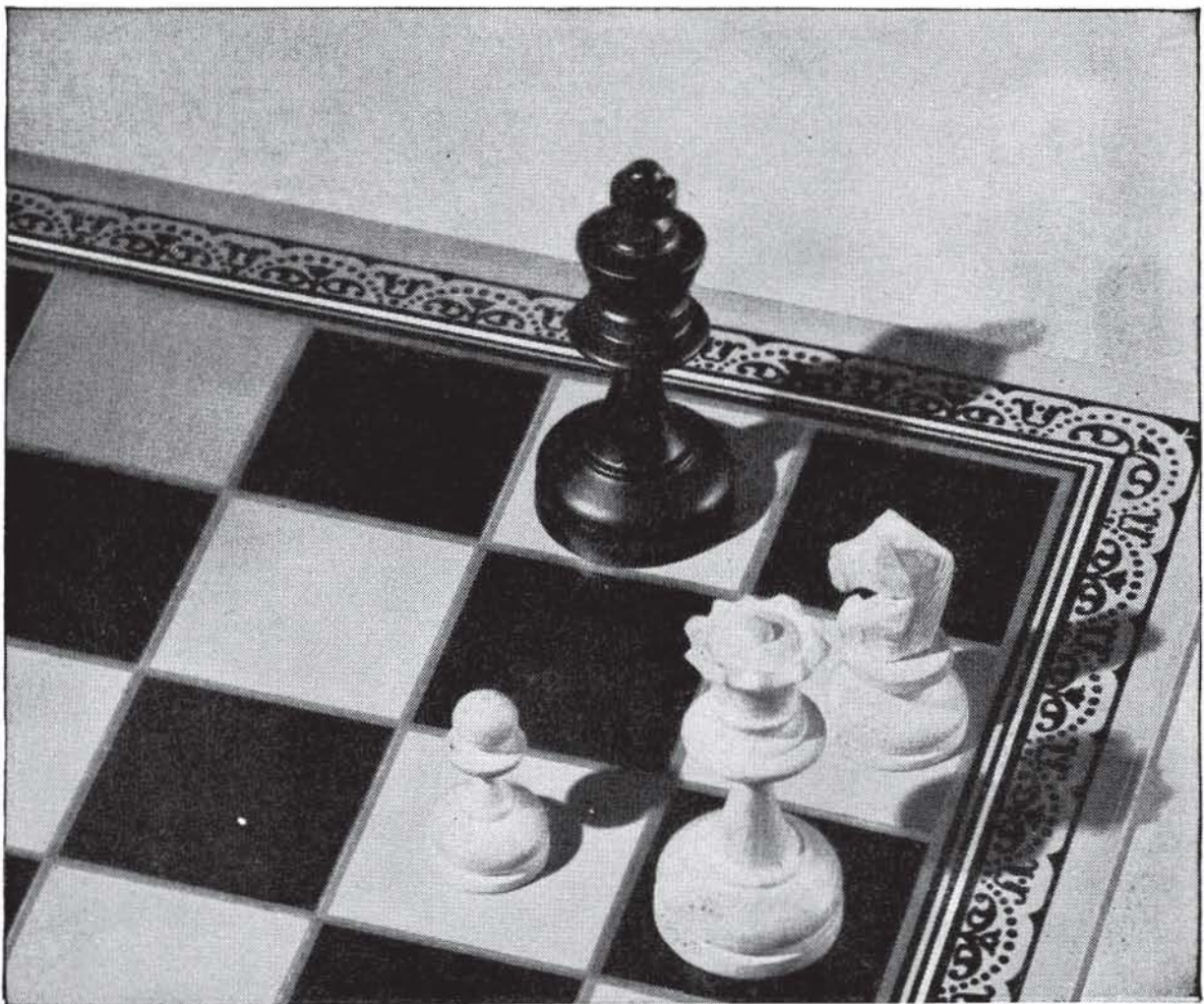
Our Health Bakery

A full line of baked goods made from Whole Grain Flour, Soy Flour, Starch, Restricted Flour, Whole Wheat Flour, Rye Flour, and Corn Meal. Wheat Germs, Soy Oil, Honey, and Sea Salt used in all of our bakery products.

LET US FILL YOUR DIETS

722 South Boulder

Phone 7711



TEOTINE: *triple attack*

on Chronic Angina and Arterial Hypertension

FOR EXTENDED MEDICATION

Teotine gives the combined relief of *mannitol hexanitrate*, vasodilator, causing 4- to 6-hour fall in blood pressure, and often relief from the pain of angina pectoris; *theobromine*, a complement to mannitol, affording prolonged vasodilation and diuretic action, with freedom from side effects and a tendency to decrease anginal attacks; *phenobarbital*, to ease typical tension states of hypertensive patients, and enhance effect of the other two drugs.

For continuous medication in chronic angina and arterial hypertension, clinical experience endorses Teotine.

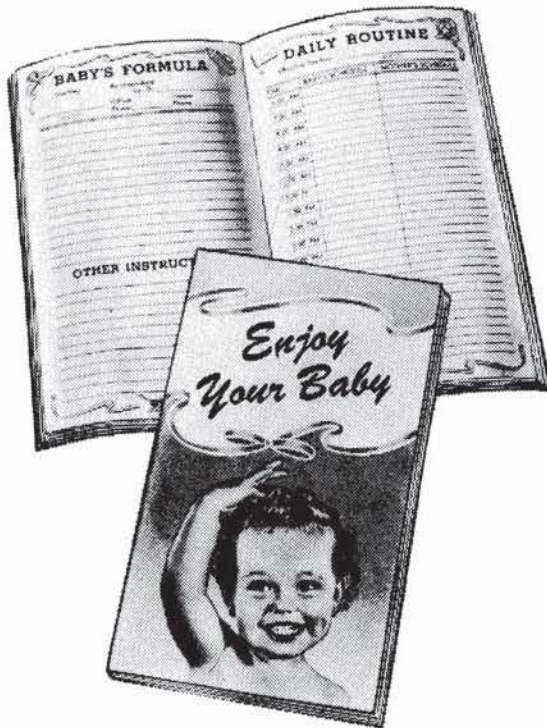
TEOTINE-Dorsey • *Effectual • Well Tolerated*

Each Teotine Tablet contains:
 Mannitol Hexanitrate . ¼ gr.
 Theobromine . . . 2½ gr.
 Phenobarbital . . . ½ gr.
 (Warning: May be habit forming)
 Supplied in bottles of 100

THE SMITH-DORSEY CO. • LINCOLN, NEBRASKA • BRANCHES at LOS ANGELES and DALLAS

MANUFACTURERS OF AL-SI-CAL POWDER • DORSEY CAL-VATINE TABLET • DORSEY

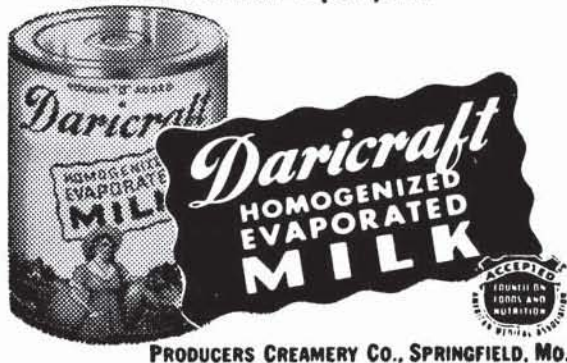
A BIG TIME-SAVER FOR EVERY DOCTOR



This handy booklet for new mothers was "built to doctors' orders". It contains blank forms for filling in your instructions and formulas.

It provides a permanent case-history record. A memo will bring you a sample...or as many as you want for your daily practice... without obligation.

Many doctors are prescribing "Daricraft Homogenized Evaporated Milk". It is always uniform, safe, sterilized, easy to digest, and high in food value and minerals. Daricraft contains 400 U. S. P. units of Vitamin D per pint.



PRODUCERS CREAMERY CO., SPRINGFIELD, MO.

PERSONALS

DR. H. A. RUPRECHT is back at his desk after a siege of illness.

It's a girl for DR. & MRS. EDWARD L. MOORE, born October 11, 1949. Congratulations!

Speakers for the Second Annual Meeting of the Medical Assistants Society of Oklahoma in Oklahoma City last October 22 were DR. VICTOR K. ALLEN, DR. ROBERT E. FUNK, and DR. MAURICE J. SEARLE.

In attendance at the American Academy of Ophthalmologists in Chicago last month were DR. CHARLES H. HARALSON, DR. DONALD V. CRANE, DR. DONALD L. MISHLER, and DR. ARTHUR H. DAVIS.

DR. JAMES W. KELLEY has taken new professional offices at 206 Philtower Building, Tulsa.

Elected to membership in the Tulsa County Medical Society last month were DR. WALTER B. SANGER, DR. JAMES W. KELLEY, DR. JOHN D. CAPEHART, DR. GLENN WEST, DR. LOUISE WILCOX, DR. ELNORA G. MILLER, DR. JOE E. TYLER, and DR. PATRICK A. LYNCH.

NOVEMBER PROGRAMS

(Continued from Page 14)

Ralph A. McGill, Chairman of the Cancer Committee of the Tulsa County Medical Society.

The concluding speaker of the year, Dr. Edward L. Moore, is a graduate of St. Louis University School of Medicine, St. Louis, Missouri, 1939. He is interned at St. Francis Hospital, Pittsburgh, Pennsylvania, and later completed a three year surgical residency there after his discharge from the United States Army Medical Corps. Dr. Moore had three years military service and was discharged with the rank of Major. He is a member of the American College of Surgeons and a Diplomate of the American Board of Surgery, and has published several accounts of his clinical studies in the field of surgery. His paper will be entitled, "The Use of Surgery For Peptic Ulcers."

in the management of

hypertension and angina pectoris

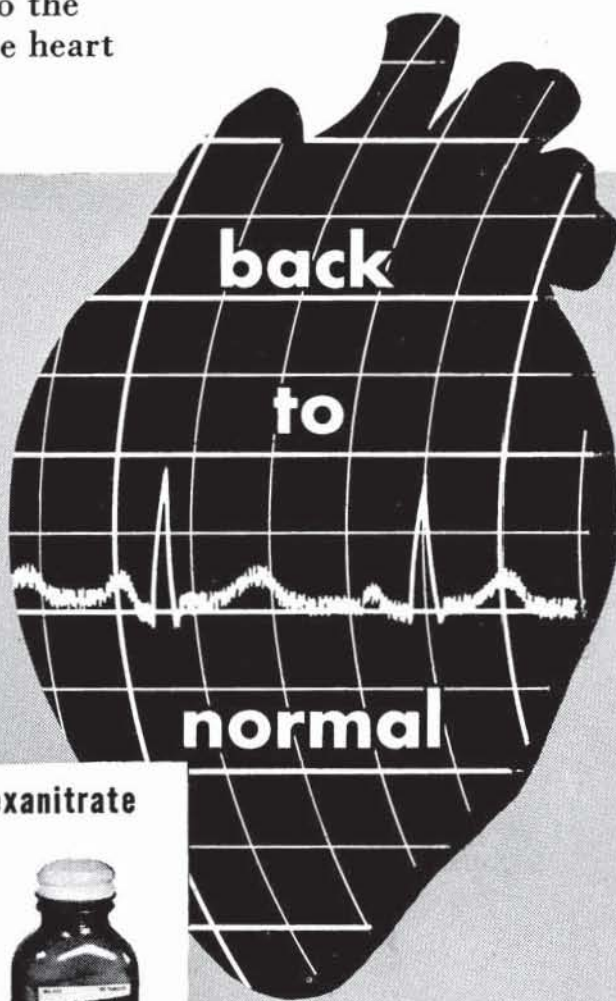
Theobarb with Mannitol Hexanitate is useful in preventing attacks of tachycardia, insomnia or transient headache when these are premonitory signs of hypertension. This preparation helps forestall severe damage to the arterial system in the brain, the heart and in the kidneys.

Theobarb with Mannitol Hexanitate is unique in its composition and has been specifically formulated to:

provide prolonged vasodilation, especially of the arterioles which are important in heart and kidney function,

produce myocardial stimulation and desired diuresis,

promote mild sedation for continued therapy with minimal side reactions.



Theobarb with Mannitol Hexanitate

Each pink tablet contains:

Mannitol Hexanitate	1/2 gr.
Phenobarbital	1/2 gr.
Theobromine	5 gr.

also Theobarb Special
with Mannitol Hexanitate

Each green tablet contains:

Mannitol hexanitate	1/2 gr.
Phenobarbital	1/4 gr.
Theobromine	5 gr.



Available in bottles of 50 and 500 tablets

Products of
VANPELT & BROWN, Inc.
RICHMOND, VIRGINIA

Theobarb with Mannitol Hexanitate

... help prevent
Fall and Spring
PEPTIC ULCER
RECURRENCES



Timely prophylaxis with TRI-CALSATE and proper diet in cases of individuals predisposed to peptic ulcers, often tends to prevent their recurrence at the seasons of the year when they recur most frequently—Spring and Fall.

TRI-CALSATE neutralizes the HCl of the gastric contents and desensitizes the pain producing mechanism. Palatable, convenient to take. Available in 4½ oz. and 18 oz. bottles.

Approx. percentage composition when in aqueous suspension:

Tri-calcium phosphate U.S.P.....	35.5
Tri-sodium phosphate crystals	12.5
(arsenic free)	
Sodium citrate crystals	52.0
	<hr/>
	100.0

Write for trial pkg. and literature

F. H. PAXTON & SONS, INC.
 469 E. OHIO ST. Manufacturing Pharmaceutical Chemists CHICAGO 11, ILL.

HILLCREST
MEMORIAL
HOSPITAL

One of Oklahoma's
finer hospitals

1653 East Twelfth St.
 Telephone 3-2131
 TULSA, OKLAHOMA

HARVARD
DRUG STORE

B. C. SHINN, Owner

PHONE 6-2186

The
Suburban
Prescription
Store

FREE
 PRESCRIPTION
 DELIVERY

3244 E. 11th St.
 Tulsa

CATRON PHARMACY

Northwest Corner
11TH AND HARVARD

*Reliable
Prescription
Service*

TELEPHONE 6-2101

FRESH — CLEAN — COMPLETE

PRESCRIPTION STOCK

Free Prescription Delivery

GWYN S. CATRON, Owner

ST. JOHN'S HOSPITAL

*A Leading
Institution
In
Oklahoma
Medicine*

1923 SOUTH UTICA
TULSA, OKLAHOMA

TELEPHONE
6-2161

D. L. KINCAID
(Kinney)

RAYMOND EWERS

Professional DRUG SHOP

An Ethical Prescription Pharmacy

2110 South Utica

Telephone 3-8169

*City Wide Delivery Service
Two Miles Closer to Southeast Tulsa*

Professional Directory

<p>VICTOR K. ALLEN, M. D., F.A.C.S. Diplomate American Board of Surgery Diseases of the Rectum 1001 Medical Arts Bldg. Tulsa</p>	<p>C. E. GILLILAND, M.D. Practice Limited to Internal Medicine Suite 210 Court Arcade Bldg. Tulsa, Oklahoma</p>
<p>S. Y. ANDELMAN, M.D. Diagnosis & Treatment of Arthritis & Rheumatic Diseases 1611 South Boston Ph. 2-3885</p>	<p>HARRY GREEN, M.D. Diseases of the Skin X-Ray & Radium Therapy 311 Medical Arts Bldg. Ph. 4-7585</p>
<p>ROBERT L. ANDERSON, M.D. Thoracic Surgery, Bronchoscopy, and Esophagoscopy 807 Medical Arts Bldg. Tulsa</p>	<p>JAMES W. KELLEY, M.D. Plastic and Reconstructive Surgery 206 Philtower Bldg. Tulsa</p>
<p>B. H. BLOCKSOM, M. D., F.A.C.S. Diplomate, Boards of Surgery, Urology Practice Limited to Urology 901 Medical Arts Bldg. Ph. 54-1888</p>	<p>A. T. KORNBLEE, M.D. Practice Limited To Skin Diseases Diplomate, American Board of Dermatology & Syphilology 916 Medical Arts Bldg. Tulsa</p>
<p>MANUEL BROWN, M. D. Allergic Diseases 1619 E. 15th Street Ph. 5-2552</p>	<p>WALTER S. LARRABEE, M.D. DELMAS B. JONES, M.D. X-Ray Diagnosis & Therapy Radium Therapy 411 Medical Arts Bldg. Ph. 4-3111</p>
<p>PAUL E. CRAIG, M.D. General Surgery 411 Daniels Bldg. Ph. 4-9674</p>	<p>E. N. LUBIN, M.D. Genito-Urinary Diseases 1106 Medical Arts Bldg. Office Ph. 3-6008 Res. Ph. 7-4388</p>
<p>SAMUEL E. FRANKLIN, M. D. General Surgery 1619 E. 15th Street Ph. 3-2109</p>	<p>JAMES D. MARKLAND, M.D. Allergy 411 Medical Arts Bldg. Ph. 4-3111</p>
<p>ROBERT E. FUNK, M.D. Practice Limited to Internal Medicine 212 Medical Arts Bldg. Tulsa</p>	<p>RALPH A. MCGILL, M.D., F.A.C.S. Surgery-Radium 1010 Medical Arts Bldg. Ph. 4-4215</p>
<p>N. C. GADDIS, M.D. Diagnosis & Internal Medicine Special Attention to Lung Diseases 1530 South Peoria St. Tulsa</p>	

Professional Directory

<p>EDWARD L. MOORE, M.D., F.A.C.S. Surgery Only 215 Braniff Bldg. Ph. 3-4789 Res. Ph. 7-1623</p>	<p style="text-align: center;">THE ORTHOPEDIC CLINIC</p> <p>619 South Main Street Tulsa Practice Limited To Bone & Joint Surgery</p> <p style="text-align: center;">JOHN E. McDONALD, M.D. FRANK A. STUART, M.D. JOHN C. DAGUE, M.D.</p>
<p style="text-align: center;">IRON H. NELSON, M.D. Clinical and Surgical Pathology 1107 Medical Arts Bldg. Tulsa</p>	<p style="text-align: center;">L. C. NORTHRUP, M.D., F.I.C.S. Gynecology & Obstetrics 1307 S. Main Ph. 3-0151</p>
<p style="text-align: center;">HERBERT S. ORR, M.D. Surgery and Obstetrics 1307 S. Main Ph. 4-2658 Car Phone ZF8-2724</p>	<p style="text-align: center;">R. C. PIGFORD, M.D., F.A.C.P. American Board of Internal Medicine Cardiovascular Diseases 203 Court Arcade Bldg. Ph. 3-8860</p>
<p style="text-align: center;">SIMON POLLACK, M.D., D.A.B.R. Diagnostic and Therapeutic Radiology 316 Braniff Bldg. Ph. 2-7517</p>	

SPRINGER CLINIC

604 South Cincinnati

Tulsa

Telephone 5-7153

Medicine

D. O. Smith, M.D.
E. G. Hyatt, M.D.
H. A. Ruprecht, M.D.
Albert W. Wallace, M.D.
Vincel Sundgren, M.D.

Neurology and Psychiatry

Tom R. Turner, M.D.
Joe E. Tyler, M.D.

Neurosurgery

Averill Stowell, M.D.
Robert A. Hayne, M.D.

Pediatrics

G. R. Russell, M.D.

General Surgery

Carl J. Hotz, M.D.
William Pratt, M.D.

Urology

K. F. Swanson, M.D.
Charles A. Hulse, M.D.

Eye, Ear, Nose and Throat

Donald L. Mishler, M.D.

Orthopedic Surgery

Charles E. Brighton, M.D.

Anesthesia

M. R. Steel, M.D.

Professional Directory

<p>J. L. RICHARDSON, M.D. Orthopedic & Traumatic Surgery 19 West 10th St. Tulsa</p>	<p>CHARLES G. STUARD, M.D. Ophthalmology 221 Court Arcade Bldg. Ph. 4-3435</p>
<p>HERSCHEL J. RUBIN, M.D. Diseases of Infants & Children 1619 East 15th St. Tulsa</p>	<p>LEON H. STUART, M.D., F.A.C.R. X-Ray Diagnosis 1107 Medical Arts Bldg. Tulsa</p>
<p>PHILIP M. SCHRECK, M.D. Internal Medicine 201-202 Medical Arts Bldg. Tulsa</p>	<p>JAMES B. THOMPSON, M. D. General Surgeon Diplomate, American Board of Surgery 1001 Medical Arts Bldg. Ph. 3-3318</p>
<p>MAURICE J. SEARLE, M.D. Pediatrics Diplomate, American Board of Pediatrics 512 Medical Arts Bldg. Tulsa</p>	<p>DRS. TRAINOR & FIRST Cardiology & Electrocardiology W. J. TRAINOR, M.D. SAFETY R. FIRST, M.D. 1011 Medical Arts Bldg. Ph. 5-7545</p>
<p>J. D. SHIPP, M.D. Surgery and Diseases of the Colon and Rectum 316 Medical Arts Bldg. Tulsa</p>	<p>WILLIAM RAY TURNBOW, M.D. Diagnostic & Therapeutic Blocks 2112 W. 41st St. Ph. 5-0653</p>
<p>W. A. SHOWMAN, M.D. Dermatology 408 Medical Arts Bldg. Ph. 3-7789</p>	<p>ARNOLD H. UNGERMAN, M.D. MILFORD S. UNGERMAN, M.D. Diagnosis & Treatment of Nervous and Mental Diseases 708 Medical Arts Bldg. Ph. 2-3151</p>
<p>F. D. SINCLAIR, M.D., F.A.C.S. Certified American Board of Obstetrics & Gynecology 307 Medical Arts Bldg. Ph. 5-6566</p>	<p>R. M. WADSWORTH, M.D. Pediatrics 1445 S. Quaker Ph. 3-4300</p>
<p>WADE SISLER, M.D. Orthopedic Surgery 8th & Elgin Ph. 5-3123</p>	<p>J. E. WALLACE, M.D. Gynecology 914 Medical Arts Bldg. Ph. 2-6501</p>



For
**RADIANT HEALTH
BUOYANT ENERGY
SOUND BONES
BEAUTIFUL TEETH**

We Recommend
**Homogenized
'VITAMIN D' MILK**

Fortified With 400 U.S.P. Units
Vitamin D Per Quart, By Vitex Process

Beatrice Foods Co.

215 North Denver

Telephone 4-2471

DAIRY COUNCIL OF TULSA

*Promoting health and human welfare through
knowledge of milk and milk products*

312 WRIGHT BUILDING

TULSA 3, OKLAHOMA

Telephone 4-8280

Affiliated With National Dairy Council

Sec. 34.66 P. L. & R.

U. S. POSTAGE

PAID

TULSA 3, OKLA.

PERMIT No. 13

(Return Postage Guaranteed)

COURTRIGHT IN THE COURT ARCADE

Tulsa's only "Ophthalmic - Dispenser" - - - manufacturing and fitting eye-glasses exclusively for patients of the Eye-Physician (M. D.) - - - visit our complete and modernlv equipped laboratory.

Res. Phone 6-1289

25 YEARS EXPERIENCE

Office Phone 4-1613

MERKEL X-RAY CO.

Exclusive Distributors For—

Westinghouse X-Ray Equipment

Physical Therapy Equipment



Complete Stock
X-Ray and Physical Therapy
Supplies



TULSA

1114 S. Boulder

Tel. 2-4897

OKLAHOMA CITY

1130 N. Hudson

Tel. 2-3522

MID-CONTINENT SURGICAL SUPPLY CO.

Hospital and Physicians
Equipment and Supplies
X-Ray Equipment

*The Complete
Surgical Supply Store*

We carry a complete stock of instruments, rubber goods, surgical dressings, sutures, laboratory stains or reagents, enamel-ware, examining room furniture, wheel chairs, supports and trusses.

PHONE 2-8169

TULSA

610 SOUTH BOSTON

Commercial Printing Company PRINTERS

We Print the Bulletin

OFFICE AND PLANT AT 417 EAST 3RD STREET

R. W. (Bob) HUDSON

Publications, Programs
Advertising Literature,
Office and Factory Forms
Fine Personal Stationery

TELEPHONE 2-2450

LIBRARY

TULSA COUNTY MEDICAL SOCIETY