

LIBRARY
TULSA COUNTY MEDICAL SOCIETY



THE BULLETIN

of the Tulsa County Medical Society

Annual Roster Issue

IN THIS ISSUE



Tulsa County Medical Society
Annual Membership Roster



Tulsa Medical Directory



Tulsa County Medical Population
Gains Only Two in Year



President's Page

August, 1947

Vol. 13

No. 8

1000 cc. flasks
500 cc. flasks
125 cc. flasks
for hospitals



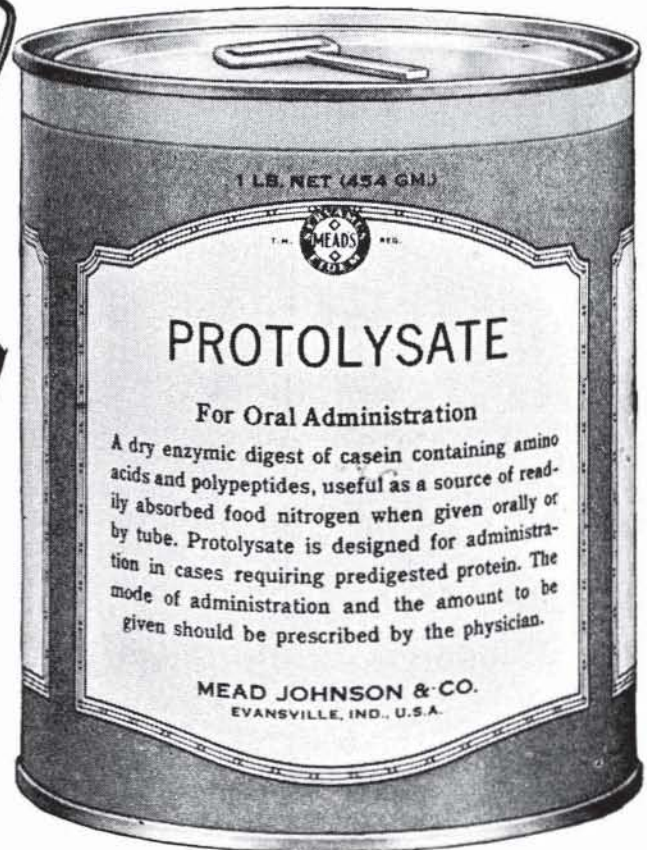
COUNCIL-ACCEPTED
AMIGEN
for parenteral administration
of amino acids

The function of Amigen and Protolysate is to supply the amino acids essential for nutrition. Both can be given in place of protein when protein cannot be eaten or digested, or in addition to protein when the protein intake is insufficient. Administered in adequate amounts, they prevent wastage of protein, restore previous losses, or build up new body protein.

COUNCIL-ACCEPTED
PROTOLYSATE
for oral and tube feeding
of amino acids

Like Amigen, Protolysate is an enzymic digest of casein and consists of amino acids and polypeptides. Like Amigen, Protolysate supplies the nitrogen essential for maintenance, repair and growth.

Unlike Amigen, which may be employed both orally and parenterally, Protolysate is designed only for oral use.



1 lb. cans at drug stores

MEAD JOHNSON & CO., EVANSVILLE 21, INDIANA
There is no shortage now of AMIGEN for parenteral use. There is no shortage now of PROTOLYSATE for oral use.



National pastime...

seeking relief from the discomfort of hay fever
... a seasonal occupation for many.

PYRIBENZAMINE hydrochloride
averages as high as 82% symptomatic
relief in hay fever. Generally
three tablets daily are sufficient.

Council accepted.



PYRIBENZAMINE [®]
(brand of tripelemamine)



Pyribenzamine



CIBA

PHARMACEUTICAL PRODUCTS, INC.
SUMMIT, NEW JERSEY

Thank You, DOCTOR-

YOUR *Good Will*
is

APPRECIATED

And we shall try to keep it through continued courteous, precise service. For the best prescription preparation from the largest stock of pharmaceuticals in Eastern Oklahoma,

Call 4-0121

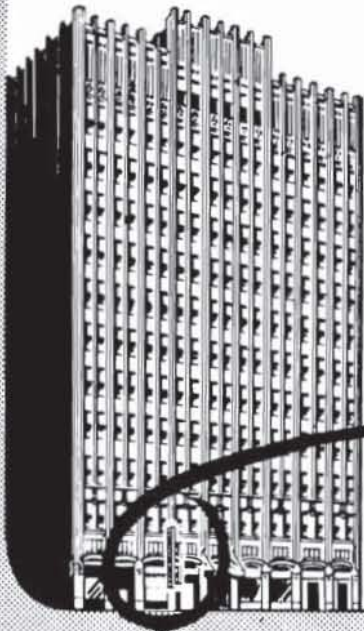
FIRST THOUGHT FOR PRESCRIPTION NEEDS

Medical Arts Prescription Shop

and Physicians and Surgeon's Supply

TULSA, OKLAHOMA

O. L. PRATHER



GETMAN'S

ROY R. GETMAN, Founder

PROMPT

FREE DELIVERY

To All Parts of the City

For 42 Years We Have Tried To
Serve You Well. Be Assured
Of Our Appreciation Of
Your Loyalty and
Know Of Our Sincere Desire
To Merit Your Continued
Confidence.

WE GIVE S. & H. GREEN
STAMPS



*Sixth and Main Sts.
Phone - 3 6171*

CONTENTS

Medical Population Figure Static.....	7
President's Page	8
1947 Membership Roster.....	9
Tulsa Medical Directory.....	13
August Medical Calendar.....	16
Glass-Nelson Clinic Opens.....	19
Personals	19
Membership Notice	20

ADVERTISERS

Akins Natural Foods	22
Audiphone Company	21
Babyland	20
Ball Drug Company	21
Catron Pharmacy	22
Ciba Pharmaceutical Products.....	3
Coca-Cola	4
Commercial Printing Company.....	24
Courtright Optical Co.....	24
Coyne Campbell Sanitarium	22
Curtain's Prescription Laboratory.....	17
Eli Lilly and Co.....	6
George A. Breon Company	17
Getman Drug Company.....	5
Harvard Drug Company.....	20
Hillcrest Hospital	22
Mayo Hotel.....	23
Mead Johnson & Company.....	2
Meadow Gold Dairy.....	23
Medical Arts Prescription Shop.....	4
Merkel X-Ray.....	24
Mid-Continent Co.....	24
F. H. Paxton Co.....	18
St. John's Hospital	21
T. Roy Barnes Drugry.....	18

continuous symptomatic relief in allergic disorders



• Relief from allergic symptoms usually follows within twenty to thirty minutes after the oral administration of Pulvules Amesec and persists for several hours. Nocturnal attacks may be avoided or mitigated by taking advantage of the timed-disintegration feature of 'Enseals' (Enteric-Sealed Tablets, Lilly) Amesec. One pulvule and one of the 'Enseals' Amesec are taken at bedtime. The pulvule disintegrates promptly and controls symptoms for the ensuing three or four hours. 'Enseals' are timed to disintegrate in from four to seven hours. Thus, the medication is released at approximately the time at which the therapeutic effect of the pulvule is exhausted.

PULVULES AMESEC

. . . for prompt relief of asthma, hay fever, migraine, allergic rhinitis, hypotension, coryza, dysmenorrhea.

ENSEALS AMESEC

. . . for delayed action, to avert nocturnal symptoms.

Formula

Pulvules and 'Enseals' Amesec contain:
 Aminophylline 2 grs.
 Ephedrine Hydrochloride. 3/8 gr.
 'Amytal' (Iso-amyl Ethyl Barbituric
 Acid, Lilly) 3/8 gr.

THE BULLETIN

OF THE

TULSA COUNTY MEDICAL SOCIETY

E. O. Johnson, M.D., *President*Victor K. Allen, M.D., *President-Elect*D. J. Underwood, M.D., *Vice-President*John E. McDonald, M.D., *Secretary-Treasurer*Jack Spears, *Executive Secretary*

Vol. 13

TULSA, OKLAHOMA, AUGUST, 1947

No. 8

MEDICAL POPULATION FIGURE STATIC

Tulsa County Records Net Gain of Only Two Doctors in Twelve-Month Period. Office Space Situation Is Improved Though Not Up to Pre-War Standards.

Tulsa County's medical doctor population has shown a net gain of only two physicians in the last twelve months, an analysis of membership rolls of the Tulsa County Medical Society indicates. A total of 215 members, including two applicants, was recorded by the Society on August 1 1947, as against a comparative figure of 213 for the same date in 1946.

These figures come as a surprise to most members of the Society with the average physician under the impression that substantial additions have been made to the Tulsa County profession in the last year. Actually, only an even dozen new members were admitted to the Society. This number was offset by one death, several retirements, and the balance representing physicians who removed their practices to other areas. Of those leaving Tulsa, about half were newer members admitted since the close of the war.

On the basis of 215, the Society membership serves approximately in the ratio of one physician to each 1,000 persons of population. In actual practice, this ratio is reduced through consideration of several physicians not members of the Society and 10 physicians serving the colored population. A survey conducted by the Oklahoma State Medical Association fixes the adjusted ratio at one physician for each 791 persons of Tulsa County population.

The medical personnel of Tulsa County continued to show a definite trend towards specialization. About 70 per cent of the membership of the Tulsa County Medical Society are practicing as specialists, and the figure is considerably higher

among younger members admitted since 1940. Of additions to the Society roster in the past two years, 90 per cent are specialists. Surgery and Internal Medicine continue to head the list as the most populated fields of specialty.

A continued shift in professional locations in the County has been noted. While the office space situation is extremely alleviated over conditions existing in the immediate post-war months, locations are still scarce in the downtown area. The Executive Offices have recorded a large number of prospective locations in residential areas where landlords are desirous of having physicians as tenants. These prospects are generally valueless as the realtors are unwilling to invest in remodeling costs necessary to convert the property for medical purposes. At the same time, landlords are asking leases of from five to ten years, often with as much as one or two years to be paid in advance. These offers are generally considered as business moves to defeat the OPA restrictions existing on residential properties.

During the past twelve months, very few physicians have located in residential areas, in contrast to the previous year which saw a wide development of residential practice. A number of physicians originally located in residencies have moved their professional offices to the downtown area, being replaced by newer doctors. In general, however, most members of the Society practicing in residential locations report they are well pleased. There continues to be a marked prefer-

(Continued On Page 20)

PRESIDENT'S PAGE

Professional office hours being what they are, most of the members of the Tulsa County Medical Society have not had the opportunity of hearing any of the Society's excellent "How's Your Health?" broadcasts, heard each Tuesday afternoon at 3:45 p.m. over Radio Station KOME. During a recent vacation I had an opportunity to tune in and enjoy a program devoted to a popular medical topic. The script was designed for consumption of lay audiences. It was medically accurate, straightforward, and not given to emphasizing any unusual or rare features of the subject under discussion. A Tulsa County Medical Society member, one of 27 who will participate in the 1947 series, did a splendid job as the speaker. If this program is a sample, I have an impression that the Society is doing some splendid public relations in the field of health education.

You will be surprised to know that the Society first began these broadcasts in 1928 in the early days of radio. The current series of programs has been on the air over various stations and under several general names for an uninterrupted schedule extending over eleven years. The public reaction to the program is manifested by the requests for copies of the script, by the telephoned inquiries of listeners to the speaker. As a radiologist may be discussing obstetrics, it cannot be presumed that the appearance of members on the program constitutes a violation of medical ethics.

The Society's Public Relations & Publicity Committee is due some special credit for its work on this series, and I believe this can best be demonstrated by each physician publicizing the program to his patients. Ask your patients to tune in. It will be entertainment and valuable health education.

Sincerely,



President.

OFFICIAL MEMBERSHIP ROSTER TULSA COUNTY MEDICAL SOCIETY

ACTIVE MEMBERS

Doctor	Address	Telephone
Adams, George M.,	902 Medical Arts Bldg. *	4-9637
Adams, R. M.,	Interstate Oil Pipeline Co., Nat'l Bank of Tulsa Bldg. (Ind)	2-5101
Akins, Jack O.,	908 Medical Arts Bldg. (U) *	2-8233
Allen, Victor K.,	1001 Medical Arts Bldg. (Proc)	3-0858
Armstrong, O. C.,	902 Medical Arts Bldg.	4-4388
Atchley, Roger Q.,	507 Medical Arts Bldg. (S)	2-2239
Atkins, Paul N.,	1001 Medical Arts Bldg.	3-5295
Atkins, Paul N., Jr.,	210 Braniff Bldg *	3-7493
Barham, J. H.,	Daniel Bldg.	3-9456
Beyer, J. Walter,	1401 S. Main (EENT)	3-2081
Billington, J. Jeffrey,	706 Medical Arts Bldg.	3-0251
Bivens, William S.,	507 Medical Arts Bldg. (S) *	2-2239
Black, Harold J.,	416 Medical Arts Bldg.	4-9332
Blocksom, Berget H.,	Springer Clinic, 604 S. Cincinnati (U) *	7156
Boone, Wilmot B.,	2112 W. 41st *	5-0653
Bradfield, Samuel J.,	607 Medical Arts Bldg.	2-2328
Branley, Bernard L.,	210 Court Arcade Bldg. (I) *	3-2604
Brighton, Charles E.,	Springer Clinic, 604 S. Cincinnati (Orth)	7156
Brocksmith, Henry A.,	1307 S. Main (I) *	3-2038
Brogden, James C.,	801 Medical Arts Bldg. (S)	2-2516
Brown, Walter E.,	411 Medical Arts Bldg. (R) *	4-3111
Browne, Henry S.,	615 Medical Arts Bldg. (U)	2-4515
Bryan, William J.,	801 Medical Arts Bldg. (I)	4-1011
Buchan, William,	203 Braniff Bldg. (S) *	2-0228
Calhoun, C. E.,	Sand Springs, Oklahoma	S. S. 36
Calhoun, Walter H.,	1104 Medical Arts Bldg.	4-6233
Carney, Andre B.,	Tulsa Clinic, 915 S. Cincinnati (S)	4-0177
Chalmers, J. S.,	Sand Springs, Oklahoma (Ind)	S.S. 100
Charbonnet, P. N.,	Oklahoma Bldg. (Ob-Gyn)	3-1155
Childs, J. W.,	501 Medical Arts Bldg.	4-6725
Cohenour, E. L.,	1101 Medical Arts Bldg. (U)	3-1076
Cook, W. Albert,	1106 Medical Arts Bldg. (EENT)	3-6008
Coulter, Thomas B.,	1011 Medical Arts Bldg.	3-9963
Craig, Paul E.,	411 Daniel Bldg. *	4-9674
Crane, Donald V.,	1116 Medical Arts Bldg. (Oph)	4-6684
Crawford, William S.,	Carter Oil Co., Nat'l Bank of Tulsa Bldg. (Ind)	2-6101
Dague, John C.,	412 National Mutual Bldg. (Orth) *	2-9273
Daily, Raymond E.,	Bixby, Oklahoma	
Davis, Arthur H.,	710 Medical Arts Bldg. (EENT)	2-3045
Davis, George M.,	Bixby, Oklahoma	
Davis, Thomas H.,	Glass-Nelson Clinic, 2020 S. Xanthus *	9-6351
Dean, W. A.,	607 Medical Arts Bldg. (Ob)	3-3900
Denny, E. Rankin,	217 Court Arcade Bldg. (I) *	3-2664
Dodd, Nevin W.,	1453 S. Quaker *	4-6853
Eads, Charles H.,	609 Medical Arts Bldg. (Ob-Gyn) *	3-1330
Edwards, D. L.,	Glass-Nelson Clinic, 2020 S. Xanthus (EENT) *	9-6351
Etherton, Monte C.,	10-A South Lewis	4-6663
Evans, Hugh J.,	216 Medical Arts Bldg. (EENT)	2-4268
Ewell, William C.,	1307 S. Main (Ob) *	3-0151
Farris, H. Lee,	303 Medical Arts Bldg.	4-5538
Fite, Marcia,	3505 S. Peoria	4-2438
Flack, F. L.,	National Bank of Tulsa Bldg. (Ind)	3-2612
Flannagan, O. A.,	912 S. Boulder	2-6625
Ford, H. W.,	Tulsa Clinic, 915 S. Cincinnati	4-0177
Forry, Willis W.,	Bixby, Oklahoma	

Doctor	Address	Telephone
Franklin, Onis	Broken Arrow, Oklahoma	
Franklin, Samuel E.	1619 E. 15th (S) *	3-2109
Fulcher Joseph	1008 Medical Arts Bldg. (U)	3-4429
Funk, Robert E.	212 Medical Arts Bldg. (I)	4-1159
Garrett D. L.	701 Medical Arts Bldg. (S)	4-1900
Gastineau, Felix T.	205 Medical Arts Bldg. (Oph)	4-2416
Glass, Fred A.	Glass-Nelson Clinic, 2020 S. Xanthus (S)	9-6351
Goddard, R. K.	Skiatook, Oklahoma	
Goen, Rayburne W.	303 Braniff Bldg. (C&L) *	3-7257
Goodman, Samuel	603 Medical Arts Bldg. (I)	4-3141
Gorrell, Ben	1109 Medical Arts Bldg. (EENT)	3-5378
Gorrell, John Franklin	1109 Medical Arts Bldg. (EENT)	3-5378
Graham, Hugh C.	1307 S. Main (Ped)	5-3455
Green, Harry	311 Medical Arts Bldg. (Derm) *	4-7585
Grosshart, Paul L.	302 Medical Arts Bldg. (S)	3-5600
Haralson, Charles H.	310 Medical Arts Bldg. (Oph)	3-0873
Hardman, Thomas J.	502 Medical Arts Bldg. (S) *	2-5684
Harris, Bunn	Jenks, Oklahoma	
Hart, Mabel M.	2529 S. Boston Pl.	3-9619
Hart, Marshall O.	1228 S. Boulder	2-5904
Hays, Luvern	Springer Clinic, 604 S. Cincinnati (Ped) *	7156
Henderson, F. W.	2541 E. 11th Pl.	6-8644
Henley, Marvin D.	911 Medical Arts Bldg. (EENT)	2-6358
Henry, Gifford H.	212 Court Arcade Bldg. (S) *	3-1878
Hill, O. L.	Tulsa Clinic, 915 S. Cincinnati	4-0177
Hoke, C. C.	Philtower Bldg. (S)	2-8372
Hoover, W. D.	201 Stanolind Bldg. *	2-5143
Hotz, Carl J.	Springer Clinic, 604 S. Cincinnati (S)	7156
Houser, Mortimer A.	1427 S. Main	2-6988
Huber, Walter A.	205 Medical Arts Bldg. (Oph)	4-2416
Hudson, David V.	Tulsa Cooperative Clinic, 521 N. Boulder (PH)	4-6672
Hudson, Margaret G.	City Health Dept., 521 N. Boulder	4-2138
Humphrey, B. H.	Sperry, Oklahoma	
Hyatt, E. G.	Springer Clinic, 604 S. Cincinnati (I)	7156
Johnson, E. O.	209 Medical Arts Bldg. (Ob-Gyn)	4-2010
Johnson, R. R.	Sand Springs, Oklahoma	S.S. 102
Jones, W. M.	Tulsa Clinic, 915 S. Cincinnati (EENT)	4-0177
Kemmerly, H. P.	902 Medical Arts Bldg. (Anes)	4-9637
Kramer, Allen C.	607 Medical Arts Bldg.	3-8874
Larrabee, Walter S.	411 Medical Arts Bldg. (R)	4-3111
Layton, O. E.	Collinsville, Oklahoma	
Lee, J. K.	217 Court Arcade Bldg. (I) *	2-8484
LeMaster, D. W.	902 Medical Arts Bldg.	7925
Lhevine, Morris B.	B-7 Medical Arts Bldg. (R)	3-5294
Lindstrom, W. Carl	1001 Medical Arts Bldg. (Ob-Gyn) *	3-1413
Loney, William R. R.	304 Medical Arts Bldg. (Ob)	4-9023
Lowe, J. O.	Thompson Bldg.	2-6246
Lusk, Earl M.	Tulsa Clinic, 915 S. Cincinnati (Ob) *	4-0177
Lynch, Thomas J.	2132 E. 24th (S)	6-8888
McDonald, John E.	412 National Mutual Bldg., (Orth) *	2-9273
McGill, Ralph A.	1010 Medical Arts Bldg. (S)	4-4215
MacKenzie, Ian	1104 Medical Arts Bldg. (Orth)	2-3412
Margolin, Berthe	1344 E. 17th Pl. (Anes)	6-3345
Markland, James D.	411 Medical Arts Bldg. (All)	4-3111
Matt, John G.	1001 Medical Arts Bldg. *	2-1014
Mayginnnes, P. H.	Palace Bldg.	8425
Miller, George H.	Atlas Life Bldg. (S)	2-6669
Miller, Royston	Glass-Nelson Clinic, 2020 S. Xanthus (Orth) *	9-6351
Miner, James L.	810 Medical Arts Bldg. (Ob-Gyn)	2-9062
Mishler, Donald L.	Springer Clinic, 604 S. Cincinnati (EENT)	7156
Mitchell, T. H.	Carter Oil Co., Nat'l Bank of Tulsa Bldg. (Ind) *	2-6101
Mohrman, S. S.	Daniel Bldg.	3-0959
Munding, L. A.	1001 Medical Arts Bldg. *	4-0964
Murdock, H. D.	1011 Medical Arts Bldg. (S)	3-6915

Doctor	Address	Telephone
Murray, P. G.,	506 Medical Arts Bldg. (Ob)	3-2867
Murray, Silas,	501 Medical Arts Bldg. (Ob)	2-8090
Neal, James H.,	City Health Dept., 521 N. Boulder (PH)	4-2138
Nelson, F. L.,	Atlas Life Bldg. (S)	3-7873
Nelson, Frank J.,	Glass-Nelson Clinic, 2020 S. Xanthus (Int)	9-6351
Nelson, I. H.,	1107 Medical Arts Bldg. (Path)	4-1835
Nelson, Marque O.,	510 Medical Arts Bldg. (Derm)	4-3532
Nesbitt, P. P.,	917 Medical Arts Bldg.	2-8284
Newlin, W. H.	Broken Arrow, Okla.	
Northrup, Laurence C.,	1307 S. Main (Ob-Gyn)	3-0151
Orr, Herbert S.,	1307 S. Main (S) *	4-2658
Osborn, George R.,	1001 Medical Arts Bldg. (Ob-Gyn)	3-1413
Palik, Emil E.,	St. John's Hospital, 1923 S. Utica (Path)	6-2161
Pavy, Chester A.,	801 Medical Arts Bldg. (EENT)	4-3207
Park, Felix R.,	603 Medical Arts Bldg. (Card-I) *	4-3141
Peden, James C.,	612 Medical Arts Bldg.	2-9018
Perry, Daniel,	804 Atlas Life Bldg. *	3-5111
Perry, Fred,	214 Braniff Bldg. *	4-1472
Perry, Hugh,	804 Atlas Life Bldg.	3-5111
Perry, John C.,	808 Medical Arts Bldg.	2-7622
Peters, James C.,	Tulsa Clinic, 915 S. Cincinnati (Int)	4-0177
Pigford, Russell C.,	203 Court Arcade Bldg. (Card) *	3-8860
Pollack, Simon,	316 Braniff Bldg. (R) *	2-7517
Porter, Horace H.,	Court Arcade Bldg. *	4-1272
Presson, L. C.,	1305 E. 15th	3-9511
Price, H. P.,	406 Medical Arts Bldg. (EENT)	2-7728
Ray, R. G.,	Tulsa Clinic, 915 S. Cincinnati *	4-0177
Reese, K. C.,	1102 Medical Arts Bldg. (Ped)	3-1114
Reynolds, E. W.,	Tulsa Clinic, 915 S. Cincinnati (Ob)	4-0177
Rhodes, R. E. L.,	509 Medical Arts Bldg.	3-4950
Roberts, T. R.,	Wright Bldg.	4-2833
Rogers, James W.,	406 Medical Arts Bldg. (U)	2-7735
Rubin, H. J.,	1619 E. 15th (Ped) *	3-8100
Ruprecht, Homer A.,	Springer Clinic, 604 S. Cincinnati (Card)	7156
Rushing, F. E.,	517 Medical Arts Bldg.	3-5542
Russell, G. R.,	Springer Clinic, 604 S. Cincinati (Ped)	7156
Schreck, Phillip M.,	202 Medical Arts Bldg. (I)	4-8409
Searle, Maurice J.,	512 Medical Arts Bldg. (Ped)	4-2901
Sethney, Walter F.,	2828 E. 15th (Ped) *	9-3987
Shepard, R. M.,	306 Medical Arts Bldg. (C&L)	4-1821
Shepard, S. C.,	807 Medical Arts Bldg. (I) *	3-7023
Sherwood, R. G.,	Court Arcade Bldg.	3-9849
Shackelford, Paul O.,	Tulsa Clinic, 915 S. Cincinnati*	4-0177
Shapiro, David,	1101 E. 15th	2-6801
Shipp, J. D.,	316 Medical Arts Bldg. (Proc) *	4-5670
Showman, W. A.,	409 Medical Arts Bldg. (Derm)	3-7789
Simms, Uca Frances,	1137 S. Xanthus (Anes)	9-6072
Simpson, Carl F.,	502 Medical Arts Bldg. (Ob)	2-5403
Sinclair, Franklin D.,	Springer Clinic, 604 S. Cincinnati (Ob-Gyn) *	7156
Sippel, Mary Edna,	1544 E. 15th	2-8560
Sisler, Wade,	Mercy Hospital, 807 S. Elgin (Orth)	5-3123
Smith, D. O.,	Springer Clinic, 604 S. Cincinnati (I)	7156
Smith, Ruric N.,	1017 Medical Arts Bldg. (EENT)	3-3208
Smith, Wendell L.,	2831 E. Admiral Blvd. *	5-2963
Smith, William Orlando,	203 Stanolind Bldg. (EENT)	3-5194
Spann, Logan A.,	203 Braniff Bldg. *	2-0216
Springer, M. P.,	Springer Clinic, 604 S. Cincinnati	7156
Stallings, T. W.,	724 S. Elgin (EENT)	2-2641
Stanley, M. V.,	307 Medical Arts Bldg.	4-0531
Steel, Marcella R.,	Springer Clinic, 604 S. Cincinnati (Anes)	7156
Stevenson, James,	615 Medical Arts Bldg. (Derm)	5-2562
Stewart, H. B.,	St. John's Hospital, 1923 S. Utica (Anes)	6-8851
Stokes, E. Malcolm,	1415 E. 15th (Ob-Gyn)	4-8657
Stokes, Lowell L.,	517 Medical Arts Bldg. *	3-5542
Strong, Paul T.,	Glass-Nelson Clinic, 2020 S. Xanthus (Int) *	9-6351

Doctor	Address	Telephone
Stuard, Charles G.,	Court Arcade Bldg. (Oph) *	4-3435
Stuart, Frank A.,	412 National Mutual Bldg. (Orth) *	2-9273
Stuart, Leon H.,	1107 Medical Arts Bldg. (R)	5-2348
Summers, C. S.,	Daniel Bldg.	3-9011
Swanson, K. F.,	Springer Clinic, 604 S. Cincinnati (U) *	7156
Thomas, William F., Jr.,	100 Braniff Bldg. (Ob-Gyn) *	4-1642
Thompson, Oliver H.,	Court Arcade Bldg. *	7115
Trainor, W. J.,	1011 Medical Arts Bldg. (I)	7545
Turnbow, William R.,	2112 W. 41st *	5-0653
Turner, Thomas R.,	Springer Clinic, 604 S. Cincinnati (P)	7156
Underwood, David J.,	815 Medical Arts Bldg. (Ped)	3-7475
Underwood, F. L.,	1001 Medical Arts Bldg.	3-5514
Ungerman, Arnold H.,	708 Medical Arts Bldg. (P)	3-9755
Venable, Sidney C.,	Tulsa County Clinic, 212 W. 6th (R)	3-2427
Wadsworth, R. M.,	2407 E. 26th Pl. (Ped) *	9-6686
Walker, William A.,	Kennedy Bldg.	4-5257
Wallace, Albert W.,	Springer Clinic, 604 S. Cincinnati (I) *	7156
Wallace, J. E.,	914 Medical Arts Bldg.	2-6501
Ward, Benjamin W.,	804 Wright Bldg. (S) *	3-0081
White, Eric M.,	312 Medical Arts Bldg. *	3-1181
White, N. Stuart,	312 Medical Arts Bldg.	3-1181
Wiley, A. Ray,	812 Medical Arts Bldg. (S)	3-0202
Williams, Theodore S.,	210 Medical Arts Bldg.	3-8443
Witcher, Robert B.,	909 Medical Arts Bldg.	2-4673
Wolff, Eugene G.,	St. John's Hospital, 1923 S. Utica (Anes) *	6-8851
Woodson, Fred E.,	908 Medical Arts Bldg. (Anes)	2-8233
Yagol, H. Benjamin,	B-7 Medical Arts Bldg. (R)	3-5294
Yandell, Hays R.,	Glass-Nelson Clinic, 2020 S. Xanthus (S) *	9-6351
Zink, Roy A.,	Daniel Bldg.	7653

APPLICATIONS PENDING, AUGUST 1, 1947

Brown, Manuel,	1415 E. 15th (All) *	3-2109
Moore, Edward L.,	215 Braniff Bldg. (S) *	3-4789

HONORARY MEMBERS

Brookshire, J. E.,	Ritz Building	3-5094
Brown, Paul R.,	1614 E. 35th	3-9903
Clinton, Fred S.,	230 E. Woodward Blvd.	3-0014
Hall, Gilbert H.,	Trimble Bldg.	3-8316
Hooper, Joel S.,	U. S. Veterans Facility, Muskogee, Okla.	
Nesbitt, E. P.,	240 Orchard Street, East Lansing, Michigan	
Pigford, A. W.,	1001 Medical Arts Bldg. (S)	7307
Reynolds, J. L.,	Orpheum Bldg.	3-5659
Wall, Gregory A.,	1202 N. Main	2-3710

KEY TO SYMBOLS

For purposes of information physicians who practice a major specialty are so indicated in the foregoing roster. The symbol following the name indicates the specialty practiced. However, this listing does not necessarily mean that the physician named limits himself strictly to that specialty.

* Veteran of World War II	Gyn—Gynecology	PH—Public Health
All—Allergy	I—Internal Medicine	Path—Pathology
Anes—Anesthesia	Ind—Industrial Medicine	Ped—Pediatrics
C & L—Chest and Lungs	Ob—Obstetrics	Proc—Proctology
Card—Cardiac	Oph—Ophthalmology	R—Radiology
Derm—Dermatology	Orth—Orthopedics	S—Surgery
EENT—Eye, Ear, Nose and Throat	P—Psychiatry	U—Urology

TULSA MEDICAL DIRECTORY

TULSA COUNTY MEDICAL SOCIETY

Executive Offices: 1202 Medical Arts Building, Tulsa. Telephone 4-8161. Hours, 8:30-5:00 daily except Saturday, 8:30-1:00. Mr. Jack Spears, Executive Secretary. Society Officers: Dr. E. O. Johnson, President; Dr. Victor K. Allen, President-Elect; Dr. David J. Underwood, Vice-President; and Dr. John E. McDonald, Secretary-Treasurer. Trustees: Dr. H. B. Stewart, Dr. Ralph A. McGill, Dr. W. A. Showman, Dr. H. A. Ruprecht, and Dr. Marshall O. Hart. Board of Censors: Dr. Marvin D. Henley, Chairman, Dr. Victor K. Allen, and Dr. Thomas J. Hardman.

Medical Library: 1203 Medical Arts Building, Tulsa. Telephone 4-1461. Hours, 9:00-5:00 daily except Saturday, 9:00-1:00. Mrs. Billie-David Anderson, Librarian. Miss Mary Evalyn McClure, Assistant. Chairman of Medical Library Committee, Dr. Robert E. Funk.

Medical Credit Bureau: 1201 Medical Arts Building, Tulsa. Telephone 4-8161. Hours, 8:30-5:00 daily except Saturday, 8:30-1:00. Mr. Jack Spears, Manager. Mrs. Florence Moore and Miss Alma Hulet, Clerks. Chairman of Medical Credit Bureau Committee, Dr. Donald V. Crane.

The Bulletin: Address all communications concerning The Bulletin to the Executive Offices, Tulsa County Medical Society, 1202 Medical Arts Building, Tulsa. Chairman of Editorial Committee, Dr. Gifford H. Henry. Managing Editor, Jack Spears.

OKLAHOMA STATE MEDICAL ASSOCIATION

Executive Offices: 210 Plaza Court, Oklahoma City, Oklahoma. Telephone 7-0976. Mr. R. H. Graham, Executive Secretary. Mr. Clayton Fondren, Associate Executive Secretary. Society Officers: Dr. Paul B. Champlin, Enid, President; Dr. Clarence E. Northcutt, Ponca City, President-Elect; Dr. Shade Neely, Muskogee, Vice-President; and Dr. Lewis J. Moorman, Oklahoma City, Secretary-Treasurer, and Editor of The Journal. Chairman, Postgraduate Study Committee, Dr. Gregory E. Stanbro, Oklahoma City.

OKLAHOMA COUNTY MEDICAL SOCIETY

Executive Offices: 512 Medical Arts Building, Oklahoma City, Oklahoma. Telephone 3-7143. Mrs. Muriel R. Waller, Executive Secretary. Dr. F. Redding Hood, President.

AMERICAN MEDICAL ASSOCIATION

General Offices: 535 North Dearborn Avenue, Chicago, Ill. Dr. George F. Lull, Executive Secretary. Address all communication, including subscription to The Journal, to this office. **Washington Offices:** 900 Columbia Medical Building, 1835 I Street N.W., Washington, D.C. Dr. Joseph S. Lawrence, Director.

TULSA COUNTY HOSPITALS

Byrne Memorial Hospital. 1321 South Peoria, Tulsa. Telephone 2-4114. Mrs. Bessie Byrne, Owner.

Flower Hospital. 523 North Boulder, Tulsa. Telephone 2-2208. Mrs. K. K. Eason, Supervisor.

Franklin Hospital. Broken Arrow, Oklahoma. Dr. Onis Franklin, Owner.

Hillcrest Lying-In Hospital. 1615 East 12th Street, Tulsa. Telephone 2-8134. Mr. Bryce Twitty, Administrator. Dr. Charles H. Eads, Chief of Staff.

Hillcrest Memorial Hospital. 1653 East 12th Street, Tulsa. Telephone 3-2131. Mr. Bryce Twitty, Administrator. Dr. Hugh C. Graham, Chief of Staff.

Medical & Surgical Hospital. 1307 South Main, Tulsa. Telephone 3-0151. Dr. L. C. Northrup, Medical Director.

Mercy Hospital. 807 South Elgin, Tulsa. Telephone 5-3123. Dr. Wade Sisler, Owner.

Moton Memorial Hospital. 603 East Pine, Tulsa. Telephone 4-8430. Post of Administrator temporarily unfilled. For negroes.

St. John's Hospital. 1923 South Utica, Tulsa. Telephone 6-2161. Sister M. Olga, Administrator. Dr. S. C. Shepard, Chief of Staff.

TULSA COUNTY CLINICS

Franklin Clinic. Broken Arrow, Oklahoma. Dr. Onis Franklin, Medical Director.

Glass-Nelson Clinic. 2020 South Xanthus, Tulsa. Telephone 9-6351. Dr. Fred A. Glass and Dr. Frank J. Nelson, Medical Directors.

Medical & Surgical Clinic. 1307 South Main, Tulsa. Telephone 3-0151. Dr. L. C. Northrup, Medical Director.

Springer Clinic. 604 South Cincinnati, Tulsa. Telephone 7156. Mr. Arthur Johnson, Business Manager.

Tulsa Clinic. 915 South Cincinnati, Tulsa. Telephone 4-0177. Dr. A. B. Carney, Medical Director. Miss Bettye Adams, Director. Mr. A. D. Mason, Business Manager.

Tulsa Cooperative Clinic. 521 North Boulder, Tulsa. Telephone 4-6672. Dr. David V. Hudson, Medical Director. For treatment of venereal diseases.

Tulsa County Medical Clinic. 212 West Sixth Street, Tulsa. Telephone 3-2427. Dr. J. Jeffrey Billington, County Physician. For indigents.

INTERN AND RESIDENT PERSONNEL

Hillcrest Memorial Hospital: Dr. D. M. Brown, Dr. S. Bayouth, Dr. Thomas Burnett, Dr. Hugh Boyd, Dr. D. L. Olson, Dr. R. R. McKnight, Dr. Theodor Everett, Dr. K. C. Kunin, and Dr. Carl H. Guild.

St. John's Hospital: Dr. Glenn West, Dr. Roberto Avalos, Dr. James Smith, and Dr. W. J. O'Melia.

LABORATORIES

Arcade X-Ray & Clinical Laboratories. Court Arcade Building, Tulsa. Telephone 5-7841.
Knoblock Laboratories. 512 Medical Arts Building, Tulsa. Telephone 2-6040.
Medical Arts Laboratories. 411 Medical Arts Building, Tulsa. Telephone 4-3111.
Nelson Pathological Laboratories. 1107 Medical Arts Building, Tulsa. Telephone 4-1835.
Pollack Laboratories. 316 Braniff Building, Tulsa. Telephone 2-7517.
Stuart X-Ray Laboratories. 1107 Medical Arts Building, Tulsa. Telephone 5-2348.
Tulsa X-Ray and Pathological Laboratories. B-7 Medical Arts Building, Tulsa. Telephone 3-5294.

City Health Department. 521 North Boulder, Tulsa. Telephone 4-2138. Dr. James H. Neal, Acting Superintendent.

County Health Department. 120 East 9th, Tulsa. Telephone 3-6648. Dr. D. W. LeMaster, County Superintendent.

City Schools Health Department. 1514 S. Quaker, Tulsa. Telephone 4-9642. Dr. Marcella R. Steel, Superintendent.

Group Hospital Service. 910 South Boston, Tulsa. Telephone 2-6264. Mr. N. D. Helland, Executive Director. Mr. Ralph Bethel, General Manager.

Oklahoma Physicians Service. 910 South Boston, Tulsa. Telephone 2-6264. Mr. N. D. Helland, Executive Director.

Oklahoma Hospital Association. 910 South Boston, Tulsa. Telephone 2-6264. Mr. Charles E. Smith, Executive Secretary.

Oklahoma State Health Department. 3400 North Eastern, Oklahoma City. Dr. Grady F. Mathews, Commissioner.

Oklahoma State Board of Medical Examiners. 813 Braniff Building, Oklahoma City. Address all communications to this office. Dr. Clinton Gallaher, Shawnee, Secretary.

Oklahoma Division, American Cancer Society. Braniff Building, Oklahoma City. Mr. Harold Howell, Executive Secretary.

Oklahoma Medical Research Foundation. Braniff Building, Oklahoma. Mr. Hugh Payne, Executive Director.

Tulsa Chamber of Commerce. Tulsa Building, Tulsa. Telephone 5-1201. Public Health Committee, Mr. Preston V. Kors, Secretary. Medical Conventions, Mr. John H. Barhydt, Secretary.

Physicians & Surgeons Exchange. 510 South Elwood, Tulsa. Telephone 7212.

Tulsa County Public Health Association. 807 South Peoria, Tulsa. Telephone 5-3238. Miss Goldie Davis, Executive Director.

Tulsa Council of Social Agencies. 603 South Cheyenne, Tulsa. Telephone 3-7171. Mr. Friendly Ford, Executive Secretary.

Better Business Bureau. Tulsa Building, Tulsa. Telephone 3-1194. Mr. Edward W. Wigg, Manager.

Medical & Dental Arts Building. 106 West 6th Street, Tulsa. Telephone 4-4709. Mr. Thomas W. Hunt, Manager.

Junior League Convalescent Home for Crippled Children. 4900 South Lewis Road. Telephone 6-9633.

Medical License Registrar. Mr. William P. Gable, County Clerk. County Courthouse, Tulsa, 6th and Boulder streets. Telephone 3-2321.

Bureau of Vital Statistics. 521 North Boulder, Tulsa. Telephone 4-2138.

Pollen Count of City Air*

Los Angeles	108
Denver	1126
Washington, D. C.	820
Atlanta	697
Boston	359
Detroit	1921
St. Louis	287
Chicago	1619
Des Moines	5228
New Orleans	796
Omaha	4159
New York	585
Portland, Oregon	36
Philadelphia	1257
Dallas	2077

*"Allergy in Practice," Feinberg, S. M., Second Edition, 1946, Year Book Publishers, Chicago

Pyribenzamine

HYDROCHLORIDE

In seasonal hay fever Pyribenzamine has provided effective symptomatic relief in 82 per cent of patients.* It has also been successfully employed in urticarial dermatoses, acute and chronic atopic dermatitis and certain allergic drug reactions. The comparatively low incidence of side effects permits adequate doses in cases where other antihistaminics have not been tolerated.

*Feinberg, J.A.M.A. 132:702, 1946

PYRIBENZAMINE ® (brand of tripelemamine)

For further information, write Professional Service Division

CIBA PHARMACEUTICAL PRODUCTS, INC., SUMMIT, NEW JERSEY

AUGUST MEDICAL CALENDAR

FRIDAY, August 1st:

Medical & Dental Office Assistants Group, Blue Cross Hospital Insurance, quarterly premiums due and payable on this date. Final date for payment, August 9th. Pay at 1202 Medical Arts Building, Tulsa.

Board of Trustees Meeting, Tulsa County Medical Society, 1:00 p.m., Mezzanine of Medical Arts Coffee Shop.

MONDAY, August 4th:

Hillcrest Hospital Staff Meeting.

TUESDAY, August 5th:

Medical Broadcast, "Problems Of Nutrition," Radio Station KOME, 3:45 p.m. Program under direction of the Tulsa Dairy Council.

FRIDAY, August 8th:

Public Health Committee Meeting, Tulsa County Medical Society, 1:00 p.m., Mezzanine of Medical & Dental Arts Coffee Shop.

SATURDAY, August 9th:

Final date to pay Blue Cross Hospital Insurance premium, Medical & Dental Office Assistants Group.

MONDAY, August 11th:

No Tulsa County Medical Society meeting. Scientific meetings discontinued until Monday, September 22, 1947.

TUESDAY, August 12th:

Medical Broadcast, "Endocrinology," Radio Station KOME, 3:45 p.m. Program Speaker, Dr. Marvin D. Henley.

SATURDAY, August 16th:

Copy deadline for the September issue of The Bulletin.

MONDAY, August 18th:

St. John's Hospital Staff Meeting.

TUESDAY, August 19th:

Medical Broadcast, "Preventative Medicine In The Navy," Radio Station KOME, 3:45 p.m. Program Speaker, Dr. W. D. Hoover.

FRIDAY, August 22nd:

Board of Trustees Meeting, Tulsa County Medical Society, 1:00 p.m. Mezzanine of Medical Arts Coffee Shop.

TUESDAY, August 26th:

Medical Broadcast, "Physical Fitness For All," Radio Station KOME, 3:45 p.m. Program Speaker, Dr. H. Lee Farris.

SATURDAY, August 30th:

Final date to pay second installment on annual membership dues to Tulsa County Medical Society.



ANNOUNCEMENT

Breon
brings you
DEMEROL
HYDROCHLORIDE

Demerol
HYDROCHLORIDE

SUPPLIED:
Tablets of 50 mg.
2 cc ampuls and 30 cc
vials of 50 mg. per cc.

Detailed literature available upon request



Powerful Analgesic and Antispasmodic.
Some Demerol* Advantages—Danger of respiratory depression greatly relieved. Does not interfere with cough reflex or cause constipation.

In Obstetrics Especially—Demerol is uncomplicated to administer. No weakening of uterine contractions. Striking absence of fetal anoxia.

Demerol Hydrochloride produces efficacious analgesic and antispasmodic action without the adverse effects of morphine.

Subject to Federal Narcotic Regulations.

**Brand of Meperidine hydrochloride (Isonipecaine). Demerol is the registered trademark of Winthrop Chemical Company, Inc.*



George A. Breon & Company
NEW YORK ATLANTA KANSAS CITY, MO. LOS ANGELES SEATTLE

GOOD WILL

is the one and only asset
that competition cannot
undersell or destroy

CURTAINS PRESCRIPTION LABORATORY

SIXTH AND BOULDER

PHONE 4-7116

A Strict Ethical Pharmacy in Policy and Appearance

Prescriptions Exclusively

T. ROY BARNES DRUGGY

Free Delivery

603 S. Boulder

Phone 2-3119

TRI-CALSATE *the buffered gastric antacid*

The nucleus of the peptic ulcer problem lies in the neutralization of excess HCl in the stomach contents by an antacid that will meet the requirements of real physiologic and therapeutic economy. TRI-CALSATE has these advantages:



1. TRI-CALSATE neutralizes the HCl of the gastric contents and desensitizes the pain producing mechanism.
2. There is no evolution of carbon dioxide during the reaction in the stomach, hence the distress from gastric distension and belching is eliminated.
3. It does not make the gastric contents alkaline.
4. The possibility of the development of alkalosis is minimized.
5. The probability of gastro-intestinal irritation is remote.
6. It does not injure the kidneys.
7. It is palatable and convenient to take.

Approx. percentage composition when in aqueous suspension:

Tri-calcium phosphate U.S.P.	35.5
Tri-sodium phosphate crystals (arsenic free)	12.5
Sodium citrate crystals	52.0
	100.0

Available on Rx in 4½ oz. and 18 oz. bottles.

Write for trial package and literature.

F. H. PAXTON & SONS, INC.

469 E. OHIO ST. Manufacturing Pharmaceutical Chemists CHICAGO 11, ILL.

GLASS-NELSON CLINIC OPENED LAST JUNE 28

An attractive addition to Tulsa's medical facilities is the Glass-Nelson Medical Clinic, 2020 South Xanthus, which opened last June 28 with a staff of seven medical doctors. Tailored to meet individual needs, the new structure is of white brick, one-story, and surrounded by an indented parking lot. Complete diagnostic and therapeutic facilities include a modern pathological and x-ray laboratory. Long delayed in completion due to building difficulties, the new clinic is attractively furnished throughout.

The new group is headed by Dr. Fred A. Glass, veteran Tulsa surgeon, and Dr. Frank J. Nelson, prominent Tulsa internist and leader in hospital and organized medicine activities. Other staff members include Dr. D. L. Edwards, eye-ear-nose and throat specialist; Dr. Paul T. Strong, cardiologist and internist; Dr. Hays R. Yandell, surgeon; Dr. Royston Miller, orthopedic surgeon; and Dr. Thomas H. Davis, general practitioner. All formerly officed in downtown locations.

The new clinic is immediately adjacent to St. John's Hospital.

PERSONALS

DR. DONALD V. CRANE was a recent speaker before the Illuminating Engineering Society of Tulsa.

DR. JOHN E. McDONALD has returned from a month's inspection tour of orthopedic rehabilitation centers in New York, Boston, and Philadelphia.

DR. A. W. PIGFORD has been presented with a certificate of honorary membership in the Oklahoma State Medical Association in appreciation of his past services to the organization. The presentation was made June 28 by DR. V. K. ALLEN, president-elect of the Tulsa County Medical Society.

DR. J. WALTER BEYER has opened offices at 1401 South Main, Tulsa, after several months of inactivity.

DR. M. V. STANLEY has returned from a week's visit with friends in Little Rock and Hot Springs.

DR. M. A. HOUSER has removed his

offices to his home at 1427 South Main, Tulsa.

DR. HORACE H. PORTER has removed his offices to the Court Arcade Building, Tulsa.

Speakers on the "How's Your Health?" series of medical broadcasts last month were DR. MARVIN D. HENLEY, DR. WALTER E. BROWN, and DR. H. LEE FARRIS.

Participating in the Boy Scout summer camp examinations program are DR. R. M. WADSWORTH, DR. MANUEL BROWN, DR. PAUL E. CRAIG, DR. WALTER E. BROWN, DR. WENDELL L. SMITH, DR. W. B. BOONE, DR. PAUL N. ATKINS, JR., DR. D. L. EDWARDS, DR. HERBERT S. ORR, and DR. WALTER F. SETHNEY.

DR. FRED PERRY has removed his offices to 214 Braniff Building, Tulsa.

DR. BEN GORRELL has resumed active practice after several months of post-graduate medical study in New York City.

DR. R. Q. ATCHLEY has returned from several weeks of vacation in Alaska, where he photographed Alaskan exteriors for his collection of motion picture films. Dr. Atchley recently had a surgical motion picture produced by himself exhibited on the Griffith Theater Circuit of Oklahoma.

DR. J. W. CHILDS has returned from Cleveland where he attended the annual meeting of the American Rosegrowers Association.

DR. R. G. SHERWOOD has returned from a vacation in the Rocky Mountains, Denver, and Jackson's Hole, Wyoming.

DR. PAUL GROSSHART was a contestant on a national radio quiz show during a recent visit to New York City. (He flunked!).

ANNOUNCEMENT

Dr. Simon Pollack has announced the opening of offices at 316 Braniff Building, 6th & Main Streets, Tulsa, for the exclusive practice of diagnostic and therapeutic radiology. Formerly director of the x-ray laboratories at St. John's Hospital, Dr. Pollack has been in his new location since July 1, 1947.

Special Service

For the expectant mother
and the Baby . . .
Every Material Need . . .

Scales for Rent
Feeding Supplies
Paleys Foods

Babyland

14 E 6th St. Ph. 3-7149
Tulsa

HARVARD DRUG STORE

B. C. SHINN, Owner

PHONE 6-2186

*The
Suburban
Prescription
Store*

FREE
PRESCRIPTION
DELIVERY

3244 E. 11th St.
Tulsa

MEDICAL POPULATION

(Continued From Page 7)

ence for South and Southeastern locations, while the North and Northeastern portions of Tulsa are barren of physicians. Only two are located to the west, both of these in the Red Fork area.

The opening of the Glass-Nelson Medical Clinic at 2020 S. Xanthus, Tulsa, late last June provided an attractive addition to the City's residential clinic facilities. Headed by two veteran Tulsa physicians, Dr. Fred A. Glass and Dr. Frank J. Nelson, its medical personnel includes seven doctors. All were previously tenants of downtown office buildings.

In the downtown area space continues to be scarce. The Medical & Dental Arts Building had several vacancies as this issue of The Bulletin went to press, but the management reported a lengthy waiting list of desirable tenants. The Braniff Building at Main and 6th Streets, Tulsa, announced this Spring its intention of becoming an exclusive medical building. At present, the structure houses seven medical doctors. The opening of the Pollock Laboratories last month gives the Building complete medical facilities. The Court Arcade Building, housing medical officer veterans, is filled to capacity. Other downtown office buildings were reported to be anxious to evict doctor-tenants due to increased demands of commercial tenants.

In the smaller communities of Tulsa County, no new doctors entered practice in the last year. Prospects for new medical talent in Bixby, Sand Springs, Sperry, etc., were definitely poor. This situation is identical to that confronting most small towns in Oklahoma, however. Physicians in smaller communities of Tulsa County report full schedules of practice, and most are considerably overworked.

NOTICE

The Annual Membership Roster of the Tulsa County Medical Society, published in this issue of The Bulletin, will be reprinted separately and made available to all members and interested groups by September 1, 1947.

ST. JOHN'S HOSPITAL

*A Leading
Institution
In
Oklahoma
Medicine*

1923 SOUTH UTICA
TULSA, OKLAHOMA
TELEPHONE
6-2161

*A
Complete
Prescription
Service*

Covering Tulsa's East Side
With Motor Delivery

Telephone 6-2156

BALL DRUG STORE

College at Admiral
DICK KELLO, Owner



JOHN L. STANLEY, Mgr.

BETTER HEARING

Made possible by

BELL TELEPHONE RESEARCH

with the New
Electronic Model

Western Electric
AUDIPHONE HEARING AID

AUDIPHONE
COMPANY

415 South Boston

Phone 4-8788

Res. 7524

Accepted by A. M. A. Council of Physical Therapy

AKIN'S

We Specialize

In Foods For Every Kind of Diet

Our Health Bakery

A full line of baked goods made from whole grain flour! Soy flour starch restricted flour added wheat germs, soy oil, honey & sea salt.

LET US FILL YOUR DIETS

722 South Boulder

Phone 7711

CATRON PHARMACY

Northwest Corner
11TH AND HARVARD

*Reliable
Prescription
Service*

TELEPHONE 6-2101

FRESH — CLEAN — COMPLETE

PRESCRIPTION STOCK

Free Prescription Delivery

GWYN S. CATRON, Owner

HILLCREST MEMORIAL HOSPITAL

*One of Oklahoma's
finer hospitals*

1653 East Twelfth St.

Telephone 3-2131

TULSA, OKLAHOMA

THE COYNE CAMPBELL SANITARIUM

For Nervous And Mental Disorders

131 N. E. 4TH STREET

OKLAHOMA CITY 4, OKLA.

TELEPHONE 3-0433

ALWAYS
UNIFORM
DEPENDABLE
SUPERIOR



HOMOGENIZED

(SOFT-CURD)

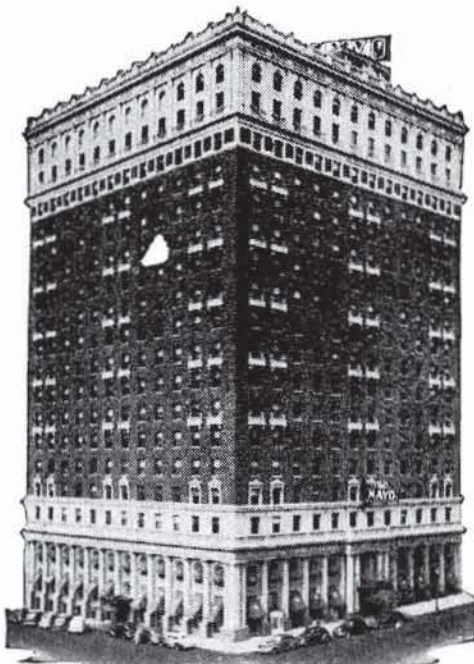
VITAMIN D

(400 U. S. P. Units Per Quart)

MEADOW GOLD MILK

BEATRICE CREAMERY COMPANY

Telephone 4-2471



Quiet, Restful Rooms,
All with Bath, are

OK

For Your Out-of-Town
PATIENTS

Hold Your Convention
and Meetings at

The MAYO

Tulsa, Okla.

SEC. 562, P. L. & R.

U. S. POSTAGE

PAID

TULSA 3, OKLA.

PERMIT No. 13

(Return Postage Guaranteed)

COURTRIGHT – OPTICIAN

Ophthalmic Dispenser

Court Arcade Building

Res. Phone 6-1289

Office Phone 4-1613

MERKEL X-RAY CO.

Exclusive Distributors For—

Westinghouse X-Ray Equipment

Burdick and High Tension
Physical Therapy Equipment



Complete Stock
X-Ray and Physical Therapy
Supplies



TULSA

1114 S. Boulder Tel. 2-4897

OKLAHOMA CITY

901 N. 12th Tel. 2-3522

MID-CONTINENT SURGICAL SUPPLY CO.

Successors to

William T. Stover Company
of Oklahoma

Hospital and Physicians
Equipment and Supplies
X-Ray Equipment

*The Complete
Surgical Supply Store*

We carry a complete stock of instruments, rubber goods, surgical dressings, sutures, laboratory stains or reagents, enamel-ware, examining room furniture, wheel chairs, supports and trusses.

PHONE 2-8169 TULSA
610 SOUTH MAIN

Commercial Printing Company PRINTERS

We Print the Bulletin

OFFICE AND PLANT AT 417 EAST 3RD STREET

R. W. (Bob) HUDSON

Publications, Programs
Advertising Literature,
Office and Factory Forms
Fine Personal Stationery

TELEPHONE 2-2450