

LIBRARY
TULSA COUNTY MEDICAL SOCIETY



THE BULLETIN

of the Tulsa County Medical Society

Convention Issue

IN THIS ISSUE



Oklahoma State Medical Association
Convention Plans Complete



The Medical Library



American Academy of Pediatrics
Conducting Statewide Survey



May Medical Calendar

**54TH ANNUAL
CONVENTION**

*Oklahoma State
Medical Association*

TULSA

MAY 14 - 16

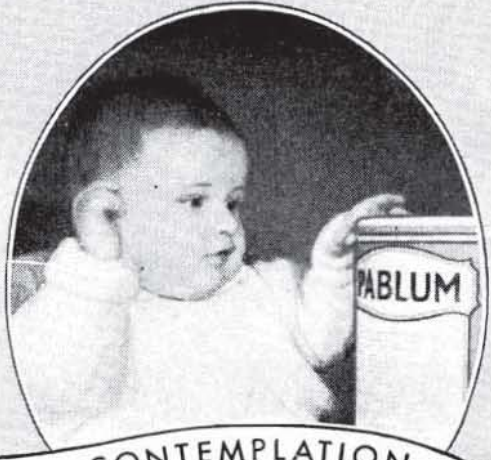
Vol. 13

No. 5

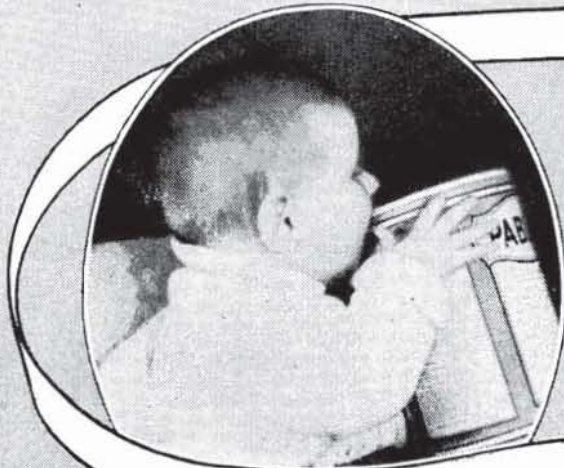
May, 1947



NEGATIVISM



CONTEMPLATION



CURIOSITY



INTEREST



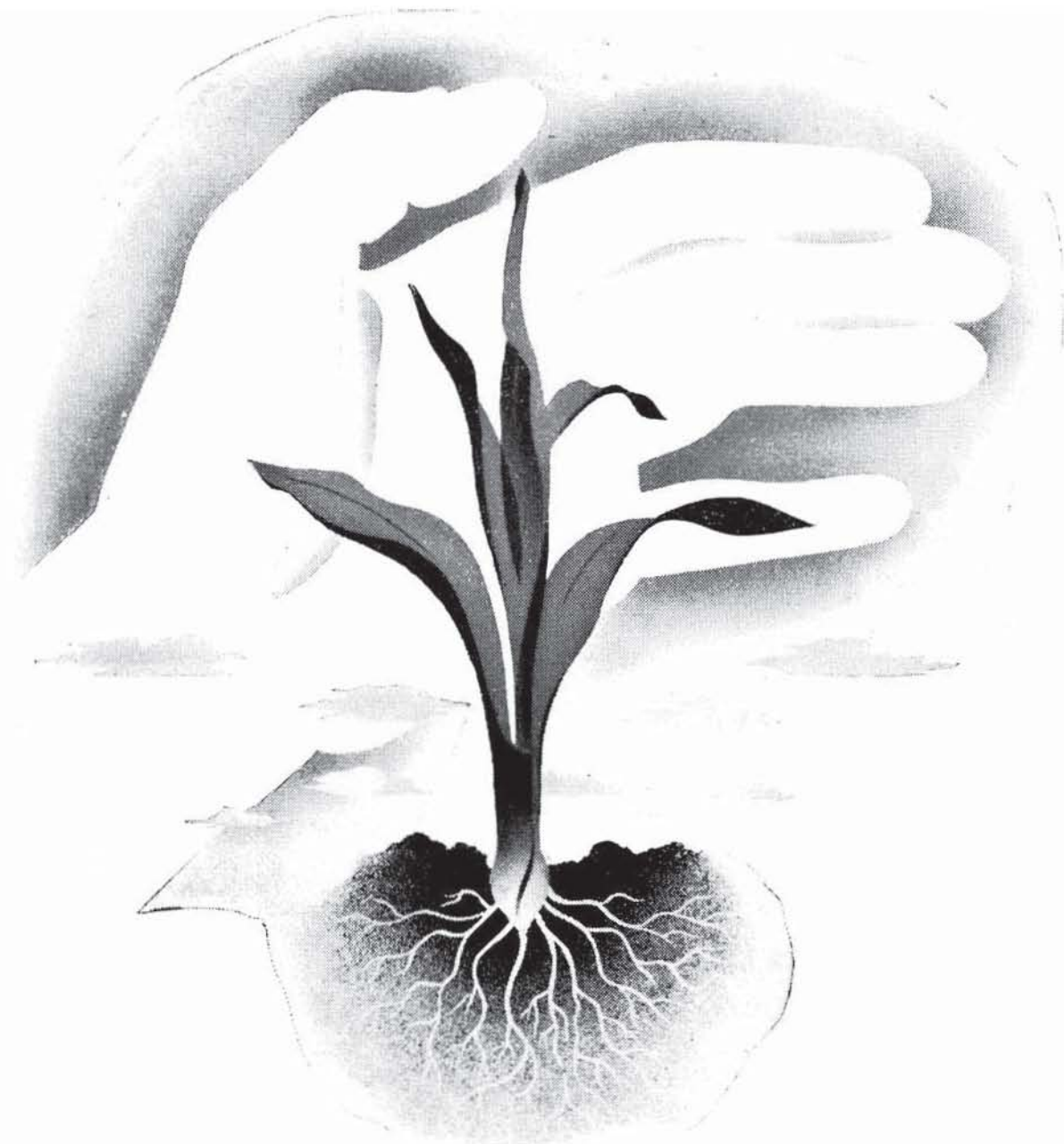
INVESTIGATION



ACCEPTANCE

A Young Lady's First Impressions

COPYRIGHT, 1944, MEAD JOHNSON & CO.



Lutocylin

Lutocylol

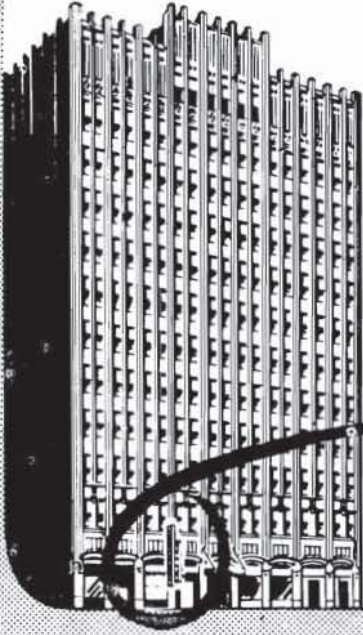
PROTECTION IN PREGNANCY against threatened or habitual abortion has been successfully achieved by Lutocylin—Ciba's brand of progesterone—or its oral equivalent, Lutocylol.

Lutocylin, Lutocylol (brands of progesterone and anhydrohydroxyprogesterone, respectively). Trade Marks Reg. U. S. Pat. Off

For further information, write Professional Service Department.

CIBA PHARMACEUTICAL PRODUCTS, INC.  **SUMMIT, NEW JERSEY**

Greetings, Doctors of the OKLAHOMA STATE MEDICAL ASSOCIATION



We wish your meeting in Tulsa every success, and your visit most pleasant. We have served your profession and its patients for 21 years with the best skills and supplies available. We should like to get better acquainted with you, so . . .

If We May Help You In Any Way, *Please* Call us At
Once — 4-0121 — Or Visit Us In The
Medical Arts Bldg.

Medical Arts Prescription Shop

and Physicians and Surgeon's Supply
TULSA, OKLAHOMA O. L. PRATHER

Drink
Coca-Cola
Delicious and
Refreshing

**THE
DRINK
EVERYBODY
KNOWS**

GETMAN'S

ROY R. GETMAN, Founder

PROMPT

FREE DELIVERY

To All Parts of the City

For 42 Years We Have Tried To
Serve You Well. Be Assured
Of Our Appreciation Of
Your Loyalty and
Know Of Our Sincere Desire
To Merit Your Continued
Confidence.

WE GIVE S. & H. GREEN
STAMPS



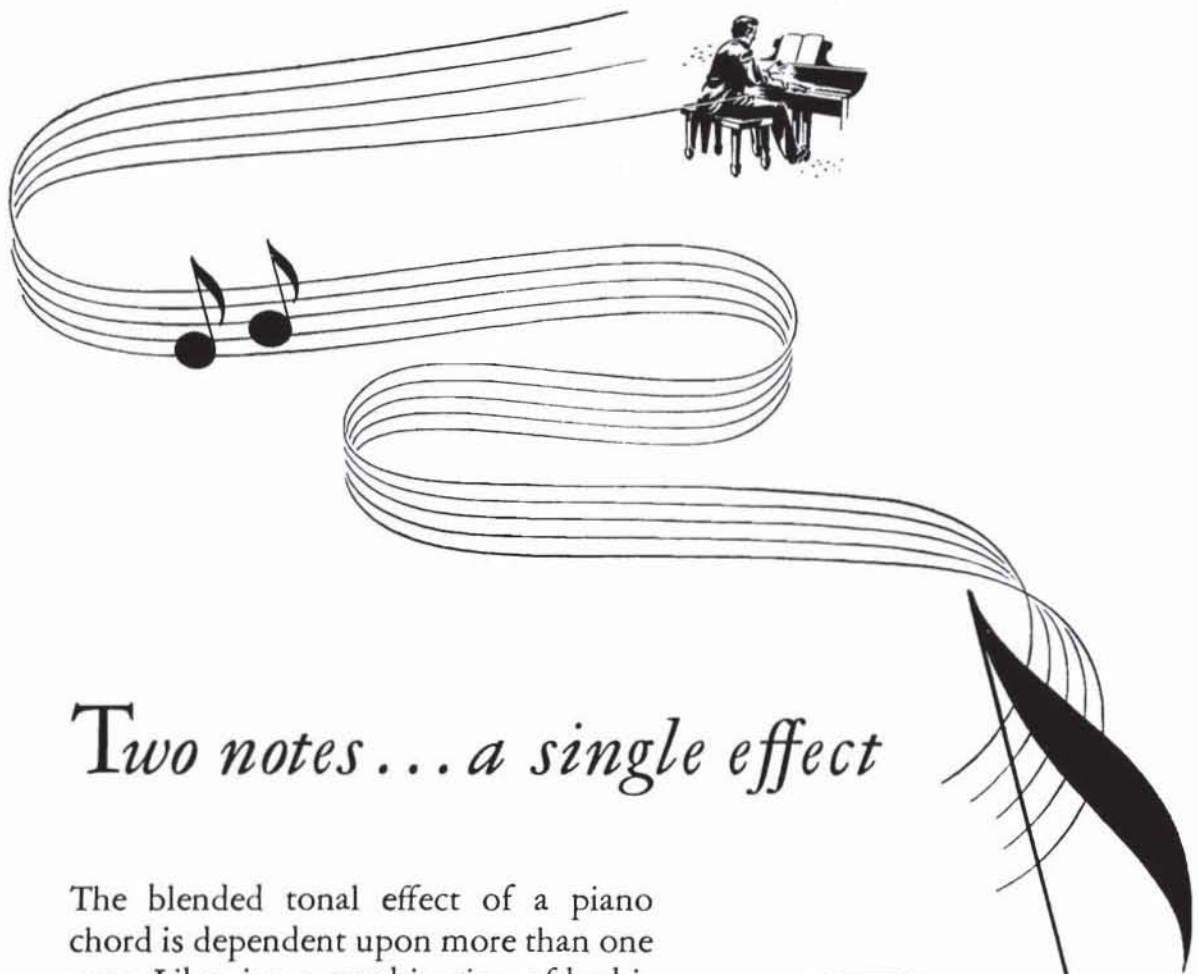
*Sixth and Main Sts.
Phone - 3 6171*

CONTENTS

Convention Arrangements	7
Convention Guest Speakers	9
Convention Officials	9
President's Page	10
The Medical Library	11
Tulsa Medical Review	12
Pediatrics Survey Begins	13
The Civic Center-Editorial	14
Assininity Rampant-Editorial	14
A Good Start-Editorial	15
Personals	19
Blue Cross Insurance	20

ADVERTISERS

Audiphone Company	18
Babyland	21
Ball Drug Company	21
Catron Pharmacy	21
Ciba Pharmaceutical Products	3
Coca-Cola	4
Commercial Printing Company	24
Courtright Optical Co.	24
Coyne Campbell Sanitarium	22
Curtain's Prescription Laboratory	18
Eli Lilly and Co.	6
George A. Breon Company	17
Getman Drug Company	5
Harvard Drug Company	22
Hillcrest Hospital	21
London and Lancashire	20
Mayo Hotel	23
Mead Johnson & Company	2
Meadow Gold Dairy	23
Medical Arts Prescription Shop	4
Medical Credit Bureau	22
Merkel X-Ray	24
Mid-Continent Co.	24
F. H. Paxton Co.	15
St. John's Hospital	22
T. Roy Barnes Drugry	17



Two notes... a single effect

The blended tonal effect of a piano chord is dependent upon more than one note. Likewise, a combination of barbiturates can produce a result which cannot be duplicated by a single orally administered barbiturate. With Pulvules Tuinal, a rapid yet prolonged sedative or hypnotic action can be produced. To accomplish this, *rapid* short-acting 'Seconal Sodium' (Sodium Propyl-methyl-carbinyl Allyl Barbiturate, Lilly) is combined with slower *longer*-acting 'Sodium Amytal' (Sodium Iso-amyl Ethyl Barbiturate, Lilly). Pulvules Tuinal act promptly and allow the patient a full night's rest, undisturbed by an early awakening.

Available as:

PULVULES TUINAL, 1½ grains (0.1 Gm.)
(No. 303)

and

PULVULES TUINAL, 3 grains (0.2 Gm.)
(No. 304)

Pulvules
Tuinal

PULVULES TUINAL—A Combination of 'Seconal Sodium' and 'Sodium Amytal' in Equal Parts

THE BULLETIN

OF THE

TULSA COUNTY MEDICAL SOCIETY

E. O. Johnson, M.D., *President*Victor K. Allen, M.D., *President-Elect*D. J. Underwood, M.D., *Vice-President*John E. McDonald, M.D., *Secretary-Treasurer*Jack Spears, *Executive Secretary*

Vol. 13

TULSA, OKLAHOMA, MAY, 1947

No. 5

CONVENTION ARRANGEMENTS COMPLETE

Fifty-Fourth Annual Meeting Of The Oklahoma State Medical Association In Tulsa, May 14-16, May Draw 900 Doctors. Splendid Scientific Program Features Nine Leading Physicians.

Members of the Tulsa County Medical Society have completed preparations to entertain several hundred Oklahoma doctors expected to attend the 54th annual meeting of the Oklahoma State Medical Association in Tulsa, May 14-16. The convention, first for Tulsa since 1944, promises to draw a record attendance as based on a flood of requests for hotel reservations since last February. The 1946 figure of 750 delegates and members in attendance is expected to be equaled.

Highlights of the 1947 convention are:

A streamlined scientific program featuring nine nationally known medical scientists and practicing physicians as well as many leaders in Oklahoma medicine.

The Annual Presidents Dinner-Dance on Friday evening, May 16, at Hotel Tulsa, preceded by an accoutrement party given in honor of the visitors by the Tulsa County Medical Society.

Daily roundtable luncheons at which guest speakers will discuss the day's papers with Oklahoma doctors.

A medical symposium featuring all guest speakers in a sparkling exchange of information and medical sentiment.

A dinner for the alumni of the Oklahoma University School of Medicine.

Meetings of the American College of Surgeons, International College of Surgeons, and the Oklahoma State Board of Medical Examiners.

The annual session of the House of Delegates of the Oklahoma State Medical Association on May 13.

Fifty outstanding commercial exhibits of leading drug houses, manufacturers, and other commercial groups.

A special program of education and social features for members and guests of the Ladies Auxiliary to the Oklahoma State Medical Association.

Election of Association officers for 1947-48.

Convention headquarters for the 1947 meeting will be at The Mayo, with registration, exhibits, and one scientific section on the entire sixteenth floor. The members of the Ladies Auxiliary will register on the mezzanine of The Mayo, where a second scientific section will be in session. The May 13 meeting of the House of Delegates is scheduled for 2:00 p.m. in the Ivory Room on the mezzanine of The Mayo. Roundtable luncheons will be at the YWCA Dining Room, immediately across the street from The Mayo. The Presidents Dinner-Dance, the Tulsa County Medical Society party, the annual dinner of the Alumni of the Oklahoma University School of Medicine—all to be in the Topaze and Exhibit rooms of Hotel Tulsa. Meetings of the Ladies Auxiliary will be divided between the YWCA and the Tulsa Club.

Dr. John E. McDonald, general chairman of the meeting, predicted attendance would exceed 1946's record figure of 750 in Oklahoma City last year. "On the basis of advance hotel reservations," he said, "it is not unlikely that registration will reach 900." This will be most probable, Dr. McDonald added, in view of the Association's increased membership through return of service doctors

and addition of newly located members.

Oklahoma doctors planning to attend the convention, but who do not have hotel reservations as yet, should write immediately to the Tulsa County Medical Society, Convention Housing Committee, 1202 Medical Arts Building, Tulsa 3, Oklahoma. Please state the dates for which you wish reservations, specifying whether single or double rooms. The Committee will refer your request to a leading hotel and all reservations will be confirmed directly by the hotel. The Mayo is booked to capacity, but desirable rooms are available in comfortable and conveniently located hotels nearby.

The scientific program is complete with full details available in the current issue of *The Journal of the Oklahoma State Medical Association*, now on the desks of each Oklahoma doctor. Dr. Maurice J. Searle, program chairman, has announced that one or two minor changes in the program have been made since the publication of the printed program, but they do not affect the papers of the national guest speakers. The 1947 scientific program is unique in that the large number of individual sectional meetings in the various specialties have been combined into two basic general meetings, one in surgery and one in medicine. Each of the various sections are represented in these two basic meetings. The advantages of such combination are: (1) speakers will be assured of substantially larger audiences, and (2) general practitioners will be enabled to keep abreast of developments in all fields of medicine. Similarly, specialists will not be penalized. This action, taken through necessity because of inadequate hotel facilities, is expected to become a standard pattern for state meetings if the arrangement proves successful.

In the break between the morning and afternoon sessions, roundtable luncheons will be held at the YWCA dining room, just across the street from The Mayo. Here, comprehensive discussions of the day's subjects will feature the national guest speakers. Tickets for the luncheons may be purchased at the registration desk.

The evening entertainment will feature

the Oklahoma University School of Medicine Alumni Dinner on Wednesday evening, May 14, at Hotel Tulsa. A symposium with all guest speakers will headline the program for Thursday evening, May 15, in the Ivory Room of The Mayo. The convention closes Friday evening, May 16, with the Presidents Annual Dinner-Dance at Hotel Tulsa. Dinner will be served at 7:00 p.m. with dancing to immediately follow the close of the inaugural program. All members and wives, and guests, are invited to an accoutrement party of the Tulsa County Medical Society in the Exhibit Room of Hotel Tulsa at 6:00 p.m. immediately preceding the Dinner-Dance. This gathering will terminate promptly at 7:00 p.m.

The House of Delegates will meet in its initial session at 2:00 p.m. in the Ivory Room of The Mayo on Tuesday, May 13, one day preceding the opening of the regular convention. The Delegates are expected to complete their business session in the afternoon and evening meetings, but an additional session will be held the following morning if necessary. Tulsa County delegates will caucus in the Executive Offices on Friday, May 9th, at 1:00 p.m.

Commercial exhibits will be in place at 9:00 a.m. on Wednesday, May 14, and will remain for the examination of the visitors until Friday, May 16, at 5:00 p.m. A complete listing of the exhibitors is to be found in the current issue of *The Journal*. Tulsa and visiting physicians are urged to visit the commercial exhibits. Dr. Frank J. Nelson, chairman of the Commercial Exhibits Committee, called attention to the contribution of the exhibitors in making the meeting possible from a financial aspect, pointing out as well that many products of advantage to the scientific progress of medicine will be on display.

Registration for the Ladies Auxiliary will be on the North end of the mezzanine of The Mayo. A business meeting is scheduled for Auxiliary officers, and on Thursday, May 15, the annual luncheon and style show of the Auxiliary will be held at the Tulsa Club. Speakers for the

(Continued on Page 19)

CONVENTION GUEST SPEAKERS

JAMES W. WATTS, M.D., Washington D. C. Neurology. Neuro-Surgeon at Gallinger Municipal Hospital and George Washington University Hospital. Consultant in Neurology and Neurosurgery at Walter Reed General Hospital and Veterans Hospital. Clinical Professor of Neuro-Surgery, George Washington University School of Medicine.

NICHOLSON J. EASTMAN, M.D., Baltimore, Maryland. Obstetrics. Obstetrician-In-Chief, The Johns Hopkins Hospital.

JAMES G. HUGHES, M.D., Memphis, Tennessee. Pediatrics. Associate Professor of Pediatrics at University of Tennessee College of Medicine.

BEDFORD SHELMIER, M.D., Dallas, Texas. Dermatology. Professor of Dermatology, Southwestern Medical College. Chief of Staff, Department of Dermatology, Parkland Hospital and Texas Children's Hospital.

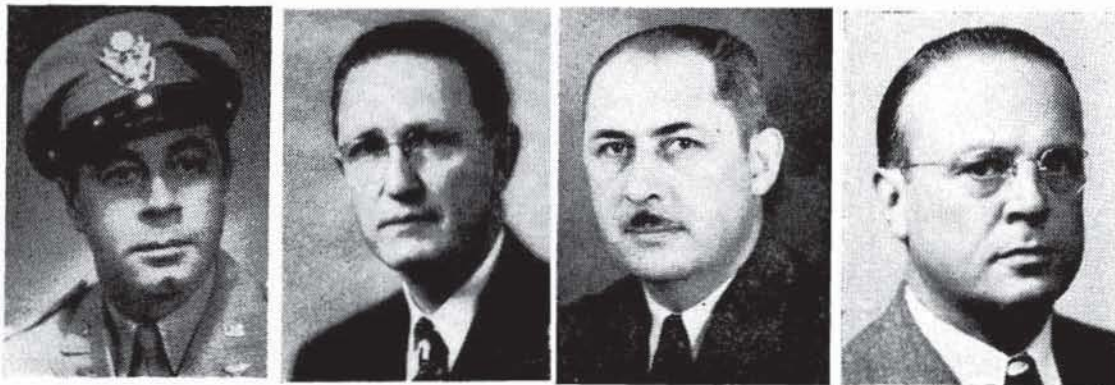
FRANCIS LEDERER, M.D., Chicago, Illinois. Otolaryngology. Professor of Otolaryngology, University of Illinois College of Medicine. Director of Education, Illinois Eye and Ear Infirmary.

C. D. CREEVY, M.D., Minneapolis, Minnesota. Urology. Former Assistant Dean of the University of Minnesota Medical School. Residency in Urology at Mayo Foundation in Rochester.

T. DUCKETT JONES, M.D., Public Health, Boston, Massachusetts. Director of Research in Rheumatic Fever and Rheumatic Heart Disease, House of the Good Samaritan, Boston. Assistant Professor of Medicine, Harvard University Medical School.

SAMUEL R. MARSHALL, M.D., Boston, Massachusetts. Surgery. Associate in Surgery, Lahey Clinic.

TINSLEY R. HARRISON, M.D., Dallas, Texas. Internal Medicine. Professor of Internal Medicine, Southwestern Medical Foundation. Consultant in Internal Medicine, Baylor University Hospital. Physician-In-Chief, Parkland Hospital, Dallas.



THEY DIRECT 1947 ANNUAL MEETING

Directing the 1947 annual meeting of the Oklahoma State Medical Association are, left to right: Dr. John E. McDonald, general convention chairman; Dr. Frank J. Nelson, chairman of the Commercial Exhibits Committee; Dr. Maurice J. Searle, chairman of the Scientific Works Committee; and Dr. W. A. Showman, chairman of the Entertainment Committee. Not pictured are Dr. E. Rankin Denny, chairman of the Publicity Committee; Dr. H. B. Stewart, chairman of the Hotels Committee; and Dr. Walter S. Larrabee, chairman of the Registration Committee.

PRESIDENT'S PAGE

As is customary, the lengthy scientific program of the Oklahoma State Medical Association, meeting in Tulsa on May 14-16, will replace the regular monthly meeting of the Tulsa County Medical Society. No scientific programs will be held during the summer months of June, July, and August, and the Society will not meet again until September 22. During this long hiatus, I am anxious that each member will take advantage for private postgraduate medical study through the facilities afforded by our Library of the Tulsa County Medical Society.

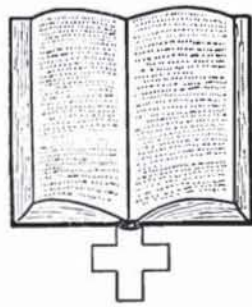
The growth of the Library, both in size and value to the membership, has been so phenomenal in the past few years that its administration occupies many hours of effort by Society officers, employees, and especially the members of the Medical Library Committee. Each meeting of the latter group reflects the growing importance of the Medical Library. We now have a facility that is an invaluable adjunct to the Tulsa doctor, who comes to rely upon it daily for additions to his medical knowledge. Yet, it remains possible to provide this service at a very small average cost.

To the doctors who will visit Tulsa during the coming annual meeting, I am particularly anxious that they avail themselves of the opportunity of visiting the Medical Library. I believe you will agree it is a splendid accomplishment.

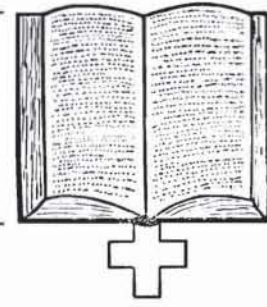
Sincerely,



President.



THE MEDICAL LIBRARY
Library of the Tulsa County
Medical Society

**Library Committee:**

Robert E. Funk, M.D., Chairman
Morris B. Lhevine, M.D.
John G. Matt, M.D.
W. A. Showman, M.D.
Fred E. Woodson, M.D.

Mrs. Billie-David Anderson, Librarian
Telephone 4-1461

GIFTS OF THE MONTH—

Russell C. Pigford, M.D. The American Heart Journal, twelve volumes, bound.

S. C. Shepard, M.D. Archives of Pathology, 1947.

James D. Markland, M.D. Journal Of Allergy, 1947.

Samuel J. Bradfield, M.D. Journal Of Clinical Endocrinology, 1947. Journal Of Gerontology, 1947.

Robert E. Funk, M.D. New England Journal Of Medicine, 1947.

Walter E. Brown, M.D. The New York Times, Sunday Edition, one year's subscription.

Thomas J. Lynch, M.D. Surgery, Gynecology, And Obstetrics, 1947.

Philip M. Schreck, M.D. Archives Of Internal Medicine, 1947.

H. D. Murdock, M.D. Collected Papers Of The Mayo Clinic, one volume. Osler's Practice Of Medicine, an early edition. Dr. Murdock has also presented a framed copy of Norman Rockwell's painting, The Country Doctor, reproduced from the Saturday Evening Post, which has been hung in the Medical Library.

Ladies Auxiliary to the Tulsa County Medical Society. Lewis' Surgery.

Thomas J. Hardman, M.D. Science, 1947.

Mrs. Austen Hutchison. The medical library of the late Dr. Austen Hutchison of Bixby, Oklahoma, including a large number of medical textbooks and journals.

The Library wishes to thank Mr. Sam Muzingo for his gift of a lovely plant.

In addition to the above gifts, the Library is indebted to the following for gifts of money to be used in the purchase of textbooks and improvement of the Library's physical facilities.

Dr. V. K. Allen
Dr. Henry S. Browne
Dr. A. B. Carney
Dr. Donald V. Crane
Dr. Robert E. Funk

Dr. Samuel Goodman
Dr. Hugh C. Graham
Dr. Paul Grosshart
Dr. E. O. Johnson
Dr. Ian MacKenzie

Dr. I. H. Nelson
Dr. Frank J. Nelson
Dr. W. A. Showman
Dr. James Stevenson
Dr. N. Stuart White

USE YOUR LIBRARY

TULSA MEDICAL REVIEW

Restrictive Legislation Endorsed

As this issue of The Bulletin went to press, the Oklahoma State Legislature was considering a proposal (House Bill 278) designed to limit the use of the term "Doctor" to persons licensed by examining boards in the healing arts. Charges that the bill would outlaw the professions of physio-therapists, massage and beauty parlor operators, reducing specialists, cosmetologists, athletic trainers, and dieticians were vigorously denied by proponents of the measure. The latter groups assert the proposal does not affect any person or group "who does not hold himself out to be a practitioner of the healing arts" and "who does not employ the term Doctor without being first licensed by an examining board in the healing arts." Seen as a valuable aid to the control of fraudulent medical practitioners, the bill evoked widespread attention, particularly from persons professing to the title of Doctor without being licensed by an examining board. The Oklahoma State Medical Association has reported its endorsement of the bill, but did not sponsor its introduction into the Oklahoma State Legislature. Chances for its passage are believed moderately good.

Moton Hospital Begins Drive

Moton Memorial Hospital, Tulsa institution for negroes, last month inaugurated an intense campaign for \$30,000 to liquidate present debts. Spearheading the drive is the Tulsa Junior Chamber of Commerce under the direction of Alfred Knight, Tulsa attorney. The solicitation in the colored community is under the supervision of W. D. Combs and E. W. Clarke. The drive will conclude May 9 with funds so raised to be used to meet a current 1946-47 operating deficit and in the purchase of additional equipment.

Trustees Endorse Civic Center

The Board of Trustees of the Tulsa County Medical Society last month formally endorsed proposals of the Tulsa Chamber of Commerce for the construction of a Civic Center in Tulsa. Acting at

the recommendation of the Society's Civic Relations Committee, headed by Dr. Charles G. Stuard, the Trustees declined to endorse any of the several present plans for location and type of structure. A report of the Civic Relations Committee saw the proposed Civic Center as beneficial to medicine in permitting a number of large medical conventions to be held in Tulsa. Possibilities that the Southern Medical Association might bring a future annual meeting to Tulsa have been heard for several years, but lack of adequate convention space has handicapped such plans.

Hillcrest Lying-In Anniversary

Hillcrest Lying-In Hospital celebrated its third anniversary on April 15, 1947, with the announcement that 5,084 babies had been born in the institution in the last two years. Statistics for 1946-47 disclose the birth of 2,226 in a 12-months period, an increase of 25 per cent over the first year. In a recent survey by Dr. Bert Caldwell, president emeritus of the American Hospital Association, the Lying-In Hospital was identified as "one of the finest in the nation."

Oklahoma City Considering Clinic

The Oklahoma County Medical Society, organization of Oklahoma City physicians, has appointed a special committee to investigate the possibilities of creating in the capital city an indigent patients clinic similar to the Tulsa County Medical Clinic, operated by the Tulsa County Medical Society. The Committee is expected to visit Tulsa to inspect the Tulsa County Medical Clinic, and to learn of the details of its operation from members of the Board of Trustees and the Clinic Committee. Dr. F. Redding Hood, president of the Oklahoma County Medical Society, reported that his organization was much impressed by the method in which the Tulsa County Medical Society handled county indigent patients. If feasible, such a clinic may be proposed for consideration of the Board of County Commissioners of Oklahoma County.

STATE PEDIATRICS SURVEY UNDERWAY

Tulsa Doctors Asked To Cooperate In Fact-Finding Study By American Academy Of Pediatrics. Survey Is Part Of Nation-Wide Study Of Child Health Facilities.

An extensive study to determine the scope and availability of child health care began in Tulsa County and elsewhere in Oklahoma last month under the auspices of the American Academy of Pediatrics. The study is part of a nationwide survey to obtain information as a basis for expansion of present pediatric and child health services in all of the forty-eight states.

Meeting April 15 in Tulsa with physicians and representatives of public agencies providing child health services, officials of the Academy asserted the far-reaching survey would "determine the present extent of pediatric education, the distribution and qualifications of physicians caring for children, and hospital facilities available for child care." In addition, it is expected to reveal the type of health services for children offered in each county and community by voluntary health organizations or official agencies.

The Oklahoma study has already been endorsed by the Pediatricians of Oklahoma, the Oklahoma State Medical Association, the Oklahoma State Dental Association, the Oklahoma State Hospital Association, and the Oklahoma State Department of Health.

Dr. George R. Russell, Tulsa pediatrician, is a member of the Study's Executive Council, which includes 10 prominent state physicians. Dr. Harold W. Buchner of Oklahoma City is general chairman, with Miss Ann Richards Taylor, of the American Academy of Pediatrics, as Executive Secretary. Offices have been opened at 525 Leonhardt Building in Oklahoma City.

The bulk of the information sought from Tulsa County physicians is to be obtained through two questionnaires which have already been mailed to each member of the Tulsa County Medical Society. These are Schedule III-A for physicians in private practice and Schedule III-B for specialists in pediatrics. The information sought from doc-

tors other than pediatricians include the following: education and hospital internship, postgraduate training in pediatrics, extent of services to children under 15 years of age, estimated number of consultations with pediatricians in the course of a year, participation in child-health clinics or health services, and a one-day record of visits and calls of infant or child patients.

The questionnaire for pediatricians is substantially the same except that additional information is requested as to extent of practice and to certain pediatric practices in the normal course of medicine. Specialists are asked to submit a 7-day record of pediatric services rendered.

Dentists are also asked to report on services to children under 15 years of age on special questionnaire forms which have already been distributed. All public health agencies, either voluntary or official, which provide some form of health services to children, are requested to provide pertinent information on a special questionnaire form.

The Survey reports that about 25 per cent of physicians and dentists return the questionnaires within twenty-four hours, with about 55 per cent more returned within a three-weeks period. The ratio of return from dentists is reported to be slightly higher than for medical doctors.

Hospitals are personally surveyed by a field-staff of three persons, and extensive figures are obtained for pediatric and child health clinic services available in hospitals.

The Oklahoma study is financed partially by the Academy, by funds from the Marshall Field Foundation of Chicago, and by a grant of \$5,000.00 from the Oklahoma Division of the National Foundation for Infantile Paralysis. Oklahoma is the 47th state in which the survey has been conducted, with only the Wyoming study needed to complete a national picture.

(Continued on Page 20)

The BULLETIN

GIFFORD H. HENRY, M.D.

Editorial Supervisor

WILLIAM C. ELLER, M.D.

HENRY A. BROCKSMITH, M.D.

*Associate Editors*JACK SPEARS, *Managing Editor*

Published monthly on the 3rd day of each month at the executive offices of the Tulsa County Medical Society, 1202 Medical Arts Building, Tulsa, Oklahoma.

Vol. 13

MAY, 1947

No. 5

THE CIVIC CENTER

A special committee of the Tulsa Chamber of Commerce is presently at work to bring into being a much-needed and long-sought Civic Center for Tulsa, a project designed to provide a large variety of cultural, educational and commercial facilities. This proposal is one which every progressive Tulsan will endorse. It will not only enable practical encouragement of the fine arts and comprehensive education, but will serve additionally to further the area commercially and professionally. The Civic Center will be a definite asset to Tulsa's physical beauty, judging by proposed architectural structure.

The Civic Center project has already been endorsed by the Board of Trustees of the Tulsa County Medical Society, not only as an addition to the City's cultural and commercial facilities but also for its value to the medical profession. Tulsa doctors have long been aware of the City's inadequate facilities for conventions and large medical meetings. The difficulties of holding the 54th Annual Meeting of the Oklahoma State Medical Association in Tulsa this month, despite splendid cooperation of Tulsa hotels and other organizations, is an excellent example. Numerous other professional and commercial groups are experiencing the same difficulty. The primary trouble is obtaining facilities sufficient in size to

house conventions in excess of 1,000 delegates. Such facilities are proposed by the Civic Center proponents. It is not unlikely that such organizations as the Southern Medical Association and the American College of Surgeons could be induced to meet in Tulsa if an adequate meeting place was available. At present, Tulsa is by-passed and the potential post-graduate medical instruction lost to hundreds of physicians in Oklahoma, Arkansas, and Kansas, and even more extended areas.

The medical profession cannot admit to a selfish interest in the Civic Center proposals. While doctors benefit, the benefits obtained are in turn relayed to the public in the form of more qualitative medicine. The commercial benefits to Tulsa business are potentially tremendous with the purchasing power of visitors to the City maintaining a high level.

The Tulsa County Medical Society is not, at present, prepared to take any sides in the controversial issues as to location of the Center, type of structures, and extent of facilities. Those will be ultimately determined in a democratic manner. The basic proposal, however, is sound and the Civic Center must not be lost through any individual or selfish interests which may influence the issue. There is too much at stake. Tulsa Medicine is prepared to participate fully in the support of this meritorious project.

ASSININITY RAMPANT

While we have come to expect and accept a certain amount of stupidity in our Oklahoma lawmakers, it is inexcusable that it should be so grossly exhibited by a small group of members of the Oklahoma State Legislature who have so loudly asserted the merits of a cancer cure manufactured by a Texas layman. With condemnations of the entire American medical profession as heartless scoundrels who would deliberately suppress an effective cancer cure for selfish motives, these salons have brayed their praise of a former associate of the late Dr. Norman Baker, self-styled "cancer specialist" of a decade ago who could not defend in the courts the American Medi-

cal Association's apt description of him as a "cancer quack." We do not know what motives prompt these elected representatives of the people to so willfully disregard the progress of American medical research and its hundreds of underpaid scientists who have sought the cancer cure unsuccessfully for four centuries. Neither do we understand what motivates their support of an individual without medical education whose past record is something more than questionable. His proponents in our State Legislature are quick to attack the American Medical Association's clinical analysis of the "cure" as valueless, to accuse American Medicine as being too morally degraded to permit the development of a cancer cure. With this stupidity relayed to the entire nation, it is no source of wonder to us that Oklahoma should continue to be identified with backwardness and stagnation. The performance of the Oklahoma State Legislature is, perhaps, the only thing up to the usual standards in the entire matter. How unfortunate that this careless thinking has extended from our Legislature to the United States Senate, strengthening the nation's disregard of what is normally a progressive, splendid state.

A GOOD START

The recent formation of the Medical Service Association of Tulsa by more than 20 local representatives of manufacturing drug houses should be a definite asset to the practice of medicine in Tulsa County. The creation of a code of ethics for the detail man, designed to improve professional relationships with the physician, will remove some of the abuses of detailing and will permit an effective conservation of time for both the doctor and the representative. To place this program into operation, the cooperation of all Tulsa doctors will be necessary. Much can be accomplished by adherence to the standards so created by both parties. Additionally, the Association contemplates beneficial projects outside the realm of detailing but in harmony with medical interests.

17 YEARS OF CLINICAL EXPERIENCE back of TRI-CALSATE The Buffered Gastric Antacid



The nucleus of the peptic ulcer problem lies in the neutralization of excess HCl in the stomach contents by an antacid that will meet the requirements of real physiologic and therapeutic economy. TRI-CALSATE has these advantages:

1. TRI-CALSATE neutralizes the HCl of the gastric contents and desensitizes the pain producing mechanism.
2. There is no evolution of carbon dioxide during the reaction in the stomach, hence the distress from gastric distention and belching is eliminated.
3. It does not make the gastric contents alkaline.
4. The possibility of the development of alkalosis is minimized.
5. The probability of gastro-intestinal irritation is remote.
6. It does not injure the kidneys.
7. It is palatable and convenient to take.

Approx. percentage composition when in aqueous suspension:

Tri-calcium phosphate U. S. P.	35.5
Tri-sodium phosphate crystals (arsenic free)	12.5
Sodium citrate crystals	52.0
	100.0

Available on Rx in 4 1/2 oz. and 18 oz. bottles

Write for trial package and literature.

F. H. PAXTON & SONS, INC.

469 E. OHIO ST. Manufacturing Pharmaceutical Chemists CHICAGO 11, ILL.

MAY MEDICAL CALENDAR

THURSDAY, May 1st:

Members who have not paid their 1947 annual membership dues to the Tulsa County Medical Society by this date are suspended from membership privileges. Quarterly premium, Medical and Dental Office Assistants Group, Blue Cross Hospitalization Insurance, due and payable on this date at 1202 Medical Arts Building, Tulsa. Final date for payment, May 10.

FRIDAY, May 2nd:

Board of Trustees Meeting, Tulsa County Medical Society, 1:00 p.m., Mezzanine of Medical & Dental Arts Coffee Shop.

MONDAY, May 5th:

Hillcrest Hospital Staff Meeting.

TUESDAY, May 6th:

Medical Broadcast, "How's Your Health?" series, Radio Station KOME, 3:15 p.m.

FRIDAY, May 9th:

Official Caucus of Delegates of Tulsa County Medical Society, 1:00 p.m., Mezzanine of Medical & Dental Arts Coffee Shop.

SATURDAY, May 10th:

Final date on which members of the Tulsa County Medical Society may apply for admission to Physicians Group, Blue Cross Hospital Insurance Plan. Apply at the Tulsa County Medical Society offices, 1202 Medical Arts Building, Tulsa. Final date for payment of quarterly premiums, Office Assistants Group, Blue Cross Hospital Insurance Plan.

MONDAY, May 12th:

No Tulsa County Medical Society meeting on this date. May meeting cancelled due to annual meeting of Oklahoma State Medical Association.

TUESDAY, May 13th:

Medical Broadcast, "How's Your Health?" series, Radio Station KOME, 3:15 p.m. House of Delegates Meeting, Oklahoma State Medical Association, Ivory Room, Mayo Hotel, 2:00 p.m.

WEDNESDAY, May 14th:

54th Annual Meeting, Oklahoma State Medical Association, opens at 9:00 a.m. at The Mayo, Tulsa, extending through Friday, May 16th. For details, see this issue of *The Bulletin*, Page 7.

FRIDAY, May 16th:

Presidents Dinner-Dance, Oklahoma State Medical Association, 7:00 p.m., Tulsa Hotel, preceded by Tulsa County Medical Society Accoutrement Party at 6:00 p.m.

MONDAY, May 19th:

St. John's Hospital Staff Meeting.

TUESDAY, May 20th:

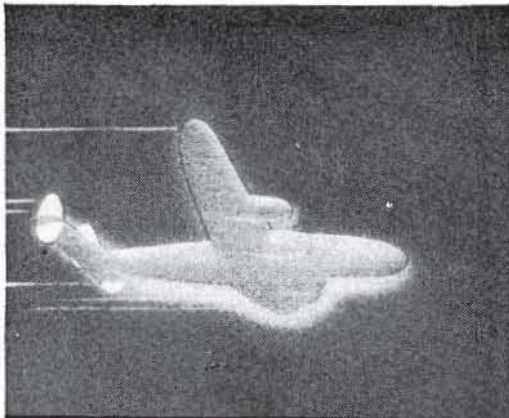
Medical Broadcast, "How's Your Health?" series, Radio Station KOME, 3:15 p.m.

FRIDAY, May 23rd:

Board of Trustees Meeting, Tulsa County Medical Society, 1:00 p.m., Mezzanine of Medical & Dental Arts Coffee Shop.

TUESDAY, May 27th:

Medical Broadcast, "How's Your Health?" series, Radio Station KOME, 3:15 p.m.



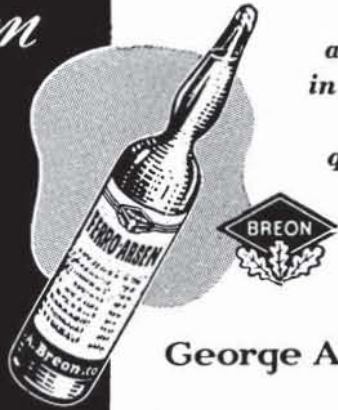
QUICK DIRECT EFFECTIVE

And so is Ferro-Arsen.

Ferro-Arsen for intravenous injection represents controlled therapy in the management of hypochromic anemia. It places iron directly in the blood stream where it is required and where it can be quickly effective in promoting hemoglobin regeneration.

Ferro-Arsen BREON

Available in 5cc and 10 cc size ampuls. Ten cc are prepared from sodium cacodylate 5 grs. and ferric chloride 2 1/4 grs. with the chlorides of calcium, potassium, and sodium.



George A. Breon & Company

KANSAS CITY, MO.

NEW YORK

ATLANTA

LOS ANGELES

SEATTLE

Prescriptions Exclusively

T. ROY BARNES D R U G R Y

Free Delivery

603 S. Boulder

Phone 2-3119

GOOD WILL

is the one and only asset
that competition cannot
undersell or destroy

CURTAINS PRESCRIPTION LABORATORY

SIXTH AND BOULDER

PHONE 4-7116

A Strict Ethical Pharmacy in Policy and Appearance



JOHN L. STANLEY, Mgr.

BETTER HEARING

Made possible by

BELL TELEPHONE RESEARCH

with the New
Electronic Model

Western Electric
AUDIPHONE HEARING AID



415 South Boston

Phone 4-8788

Res. 7524

Accepted by A. M. A. Council of Physical Therapy

PERSONALS

It's a baby girl for DR. and MRS. CHARLES E. BRIGHTON, born April 8 at St. John's Hospital. Congratulations!

DR. CHARLES G. STUARD has returned from a combination business and vacation trip to Baltimore, Ohio.

DR. JOHN E. McDONALD was a recent speaker before the LeFlore County Medical Society at Poteau, Oklahoma.

DR. GEORGE R. OSBORN has been vacationing in Chicago, Ill.

DR. H. LEE FARRIS has returned to his office after a lengthy illness. Also recovered from a recent automobile accident is DR. WILLIAM A. WALKER.

DR. A. W. PIGFORD has been nominated by the Tulsa County Medical Society for honorary membership in the Oklahoma State Medical Association.

DR. E. O. JOHNSON is instructor in Obstetrics & Gynecology at the St. John's Hospital School of Nursing.

DR. EMIL E. PALIK was speaker for the April 28th meeting of the Tulsa County Medical Society. His subject was "Rabies."

DR. WILLIAM C. ELLER has removed his practice to Waterloo, Iowa.

DR. L. A. MUNDING has been named to represent the Tulsa County Medical Society in the current pediatrics survey being conducted in Oklahoma by the American Academy of Pediatrics. Dr. Munding will represent general practitioners, with pediatricians represented by DR. G. R. RUSSELL.

DR. A. RAY WILEY has returned to his office after a brief illness.

DR. H. D. MURDOCK entertained members of Nu Sigma Nu medical fraternity with a yachting party at Grand Lake on Thursday, April 17. Members present included DR. MAURICE J. SEARLE, DR. ROBERT E. FUNK, DR. WALTER E. BROWN, DR. B. H. BLOCKSOM, and DR. THOMAS B. COULTER.

DR. ELLIS JONES is extending his California vacation for several weeks.

DR. JAMES L. MINER is vacationing in Tucson, Arizona, where DR. RALPH

A. MCGILL is also enjoying the Arizona sun.

DR. THOMAS R. TURNER was chairman of a special meeting conducted in Tulsa by representatives of the American Epilepsy League, April 8.

DR. MARCELLA R. STEEL was co-chairman of arrangements for Public Health Nursing Week in Tulsa, April 20-26.

DR. JOHN C. PERRY has been a frequent visitor to Oklahoma City in connection with his new duties as a member of the Oklahoma State Board of Medical Examiners and as a member of the Public Policy Committee of the Oklahoma State Medical Association.

DR. MORRIS B. LHEVINE has been vacationing in the East.

CONVENTION PLANS

(Continued from Page 8)

general session include the presidents of the Auxiliaries of the American Medical Association and the Southern Medical Association. Mrs. Carl J. Hotz is in charge of local arrangements.

General registration for the convention will be on the sixteenth floor of The Mayo, it has been announced by Dr. Walter S. Larrabee, chairman of the Registration Committee. Members of the Tulsa County Medical Society are being registered in advance by the Executive Offices personnel, and badges and programs may be secured by Tulsa doctors with a minimum of delay.

The American College of Surgeons, the International College of Surgeons, and the Oklahoma State Board of Medical Examiners have announced meetings for

NOTICE TO MEMBERS

A very few members who have not paid any portion of their 1947 annual membership dues to the Tulsa County Medical Society are reminded that they cannot attend the coming annual meeting of the Oklahoma State Medical Association in Tulsa, May 14-16, unless in good standing with both organizations. Members may pay delinquent dues at Tulsa County Medical Society, 1202 Medical Arts Building, Tulsa, Oklahoma.

Here is the

OKLAHOMA GROUP

Liability Insurance!

- ✓ Autopsies
- ✓ Inquests
- ✓ Personal Restraint
- ✓ Assaults
- ✓ Loss of Services
- ✓ Slander
- ✓ Libel
- ✓ Undue Familiarity
- ✓ Anaesthesia
- ✓ Hallucinations

This is the most liberal malpractice insurance policy ever offered the medical profession in this state, with control of claims, suits and rates vested in a committee, controlled by doctors.

OKLAHOMA GROUP LIABILITY INSURANCE

is written and offered by

London & Lancashire

State Office in Terminal Bldg.
Oklahoma City

*Written by Oklahoma
doctors for doctors
of Oklahoma*

their members during the convention.

Dr. Paul B. Champlin, Enid, will be inaugurated as President of the Oklahoma State Medical Association, assuming office with other officers to be elected by the House of Delegates. A President-Elect, to serve as President in 1948-49, will also be named. Several leading doctors have been mentioned as candidates for this office.

Visiting doctors are urged to make use of any free time to inspect the City of Tulsa and its many beautiful landmarks and showplaces. The Tulsa Chamber of Commerce, which will assist in registering visitors, has suggested the out-of-town doctors visit the following while in Tulsa: Philbrook Art Center, leading Tulsa hospitals, Mohawk Lake and Park, Mohawk Park Zoo, Riverside Drive, the attractive residential sections in the Eastern and Southern portions of the City, Reservoir Hill and its beautiful view, the Tulsa Municipal Airport, and the complete shopping and dining facilities of downtown Tulsa.

PEDIATRICS SURVEY

(Continued from Page 13)

Tulsa physicians in attendance at the April 15 meeting were Dr. Marcella R. Steel, Dr. Homer A. Ruprecht, Dr. H. J. Rubin, Dr. R. M. Wadsworth, Dr. Margaret G. Hudson, Dr. G. R. Russell, Dr. James H. Neal, and Dr. William Perry.

All groups completing questionnaires are asked to return them not later than May 10 to the Survey headquarters in Oklahoma City.

Members of the Tulsa County Medical Society wishing to purchase Blue Cross Hospital Insurance may do so during the current anniversary period of the Physicians & Surgeons Group. Applications must be received on or before May 10. Full details have been mailed to each member of the Society, and any additional information is available from the Executive Offices. Protection becomes effective June 1, 1947, at which time members will be billed for a semi-annual premium.

HILLCREST MEMORIAL HOSPITAL

*One of Oklahoma's
finer hospitals*

1653 East Twelfth St.

Telephone 3-2131

TULSA, OKLAHOMA

*A
Complete
Prescription
Service*

Covering Tulsa's East Side
With Motor Delivery

Telephone 6-2156

BALL DRUG STORE

College at Admiral

DICK KELLO, Owner

CATRON PHARMACY

Northwest Corner
11TH AND HARVARD

*Reliable
Prescription
Service*

TELEPHONE 6-2101

FRESH — CLEAN — COMPLETE

PRESCRIPTION STOCK

Free Prescription Delivery

CWYN S. CATRON, Owner

Special Service

For the expectant mother
and the Baby . . .
Every Material Need . . .

**Scales for Rent
Feeding Supplies
Paleys Foods**

Babyland

14 E 6th St.

Ph. 3-7149

Tulsa

Send Your Delinquent Accounts Now to
Tulsa's Finest Collection Service

MEDICAL CREDIT BUREAU

Official Collection Agency of The Tulsa County Medical Society

1202 Medical Arts Bldg.

Phone 4-8161

HARVARD DRUG STORE

B. C. SHINN, Owner

PHONE 6-2186

*The
Suburban
Prescription
Store*

FREE
PRESCRIPTION
DELIVERY

3244 E. 11th St.
Tulsa

ST. JOHN'S HOSPITAL

*A Leading
Institution*

*In
Oklahoma
Medicine*

1923 SOUTH UTICA
TULSA, OKLAHOMA

TELEPHONE
6-2161

THE COYNE CAMPBELL SANITARIUM

For Nervous And Mental Disorders

131 N. E. 4TH STREET

OKLAHOMA CITY 4, OKLA.

TELEPHONE 3-0433

ALWAYS
UNIFORM
DEPENDABLE
SUPERIOR



HOMOGENIZED

(SOFT-CURD)

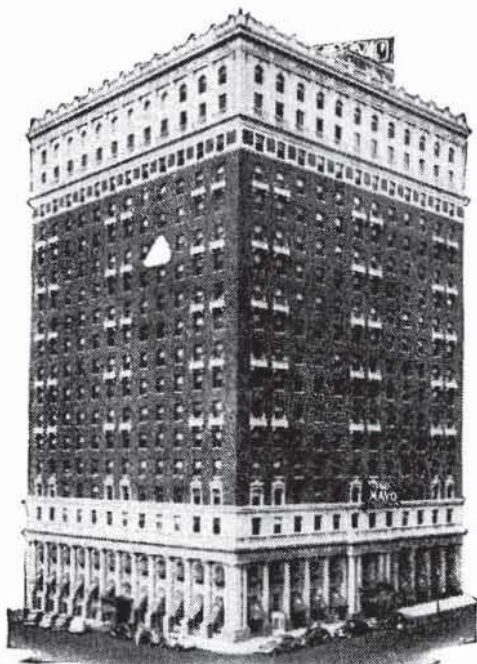
VITAMIN D

(400 U. S. P. Units Per Quart)

MEADOW GOLD MILK

BEATRICE CREAMERY COMPANY

Telephone 4-2471



Quiet, Restful Rooms,
All with Bath, are

OK

For Your Out-of-Town
PATIENTS

•
Hold Your Convention
and Meetings at

The MAYO

Tulsa, Okla.

SEC. 562, P. L. & R.

U. S. POSTAGE

PAID

TULSA 3, OKLA.

PERMIT No. 13

(Return Postage Guaranteed)

COURTRIGHT IN THE COURT ARCADE

Tulsa's only "Ophthalmic-Dispenser" - - - manufacturing and fitting eye-glasses exclusively for patients of the Eye-Physician (M. D.) - - - visit our complete and modernly equipped laboratory.

Res. Phone 6-1289

24 YEARS EXPERIENCE

Office Phone 4-1613

MERKEL X-RAY CO.

Exclusive Distributors For—

Westinghouse X-Ray Equipment

**Burdick and High Tension
Physical Therapy Equipment**



**Complete Stock
X-Ray and Physical Therapy
Supplies**



TULSA

1114 S. Boulder

Tel. 2-4897

OKLAHOMA CITY

901 N. 12th

Tel. 2-3522

MID-CONTINENT SURGICAL SUPPLY CO.

Successors to

**William T. Stover Company
of Oklahoma**

**Hospital and Physicians
Equipment and Supplies
Keleket X-Ray Equipment**

*The Complete
Surgical Supply Store*

We carry a complete stock of instruments, rubber goods, surgical dressings, sutures, laboratory stains or reagents, enamel-ware, examining room furniture, wheel chairs, supports and trusses.

PHONE 2-8169

TULSA

610 SOUTH MAIN

Commercial Printing Company PRINTERS

We Print the Bulletin

OFFICE AND PLANT AT 417 EAST 3RD STREET

R. W. (Bob) HUDSON

Publications, Programs
Advertising Literature,
Office and Factory Forms
Fine Personal Stationery

TELEPHONE 2-2450