

TULSA COUNTY MEDICAL SOCIETY



# THE BULLETIN

*of the Tulsa County Medical Society*

*Anniversary Issue*

## **IN THIS ISSUE**



Tulsa County Medical Society  
Observes Fortieth Anniversary



The Medical Library



Budget Slash May Cripple  
O. U. School of Medicine



Tulsa Area Medical News

*March, 1947*

---

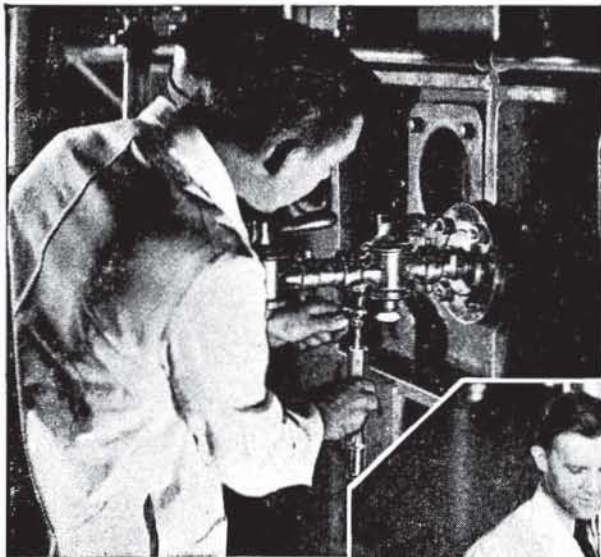
Vol. 13

No. 3

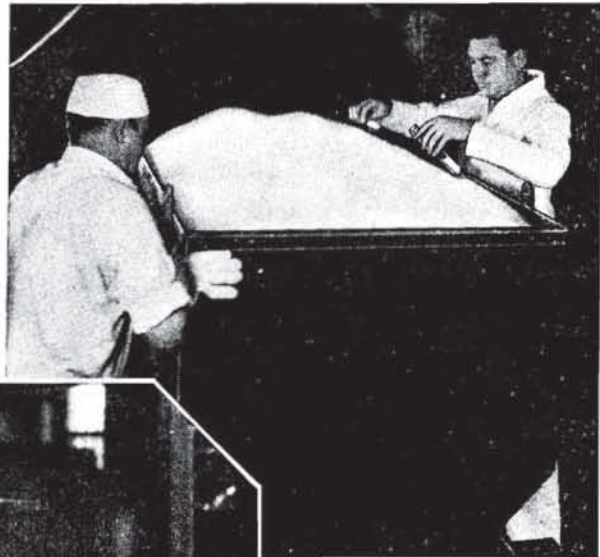
---

# DEXTRI-MALTOSE

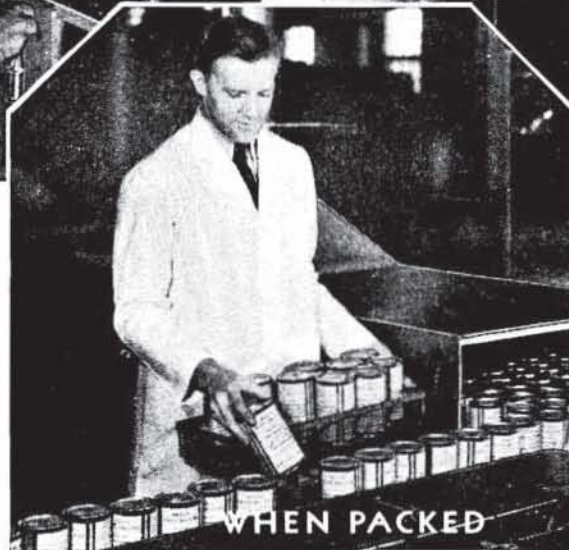
## Is Tested Bacteriologically During Every Stage



BEFORE DRYING



AFTER DRYING



WHEN PACKED

EVERY day that Dextri-Maltose is manufactured, control samples for bacteriological analyses are secured from certain points in the process which experience has shown give an accurate picture of the bacteriological condition of the product in the different steps of its manufacture. As a result of experiment and long experience, it has been demonstrated that by exercising certain strict sanitary control measures and precautions, the bacteria count can be reduced to the point where the finished product approaches practi-

cal sterility. In infant feeding the physician protects the vitality and resistance of the organism in every way possible, by using pasteurized or boiled milk, boiled water, and sterilized bottles and nipples. He therefore naturally prefers to increase this margin of safety by specifying Dextri-Maltose which is bacteriologically safe. Here where the life and health of the infant and the reputation of the physician are in the balance . . . VALUE, NOT PRICE, IS THE TRUE MEASURE OF ECONOMY.

**MEAD JOHNSON & COMPANY, Evansville, Indiana, U. S. A.**

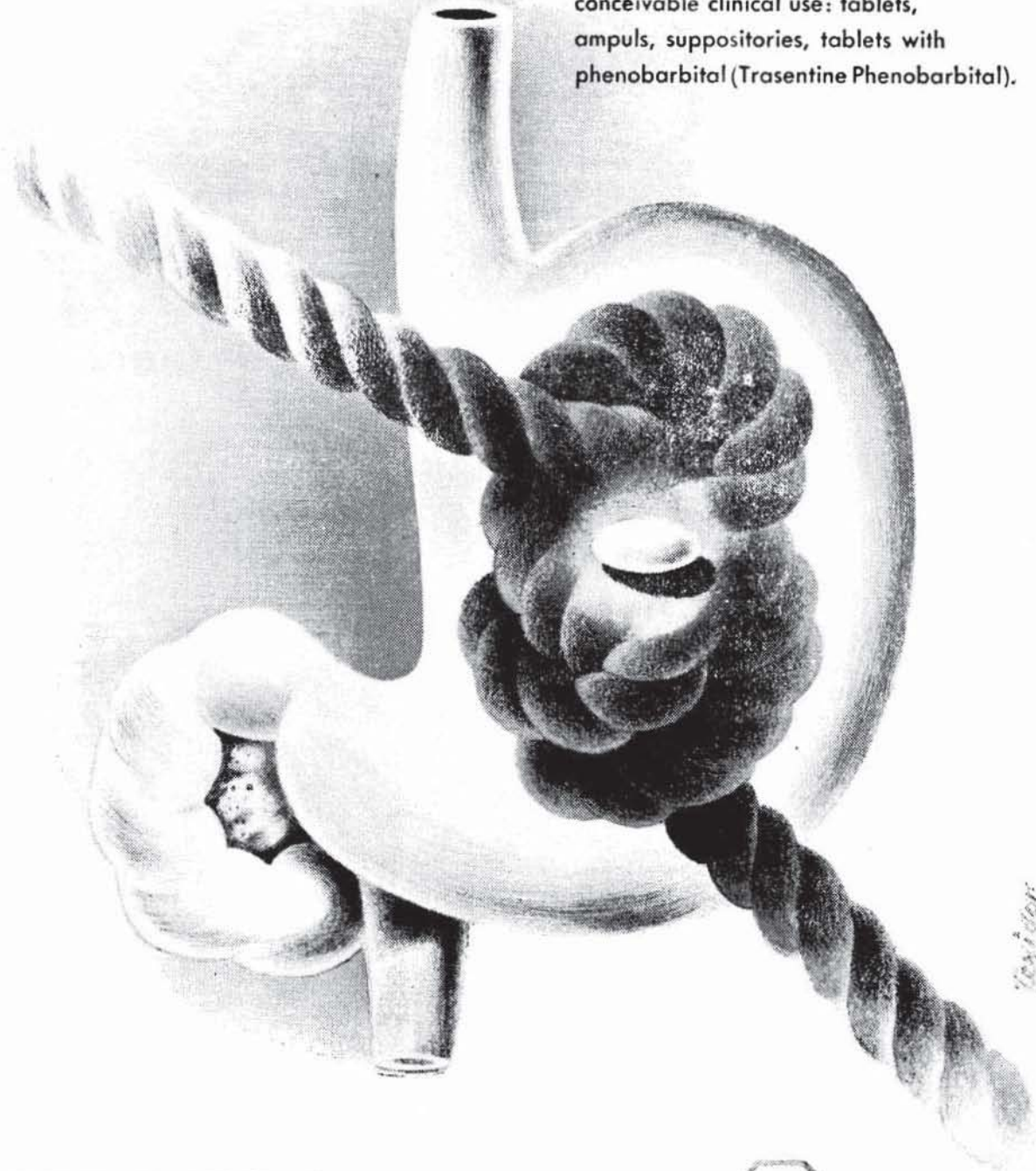
Please enclose professional card when requesting samples of Mead Johnson products to cooperate in preventing their reaching unauthorized persons



# Trasentine

(brand of adiphenine). T. M. Reg. U. S. Pat. Off. and Canada.

**When spasm** ties smooth muscle into knots, prescribe Trasentine, a highly effective well-tolerated antispasmodic issued in forms for every conceivable clinical use: tablets, ampuls, suppositories, tablets with phenobarbital (Trasentine Phenobarbital).



For further information, write Professional Service Dept.

CIBA PHARMACEUTICAL PRODUCTS, INC.  SUMMIT, NEW JERSEY



# Yes, Nurse - -

## THE WOMAN-POWER OF YOUR PROFESSION IS APPRECIATED

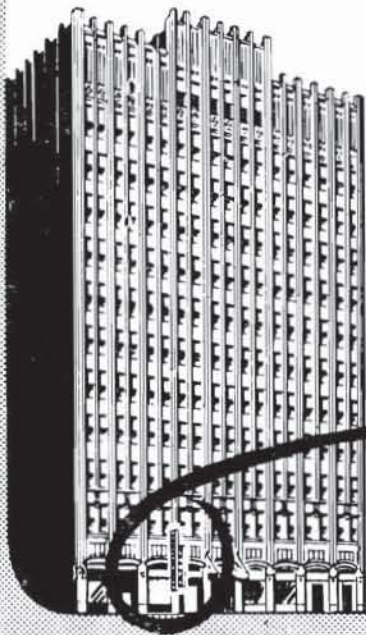
And we appreciate your patronage. Every consideration is given to the special needs of Nurses. For the very best in technical service

Call 4-0121

FIRST THOUGHT FOR PRESCRIPTION NEEDS

*Medical Arts Prescription Shop*

and Physicians and Surgeon's Supply  
TULSA, OKLAHOMA O. L. PRATHER



Drink  
*Coca-Cola*  
Delicious and  
Refreshing

**THE  
DRINK  
EVERYBODY  
KNOWS**



# GETMAN'S

ROY R. GETMAN, Founder

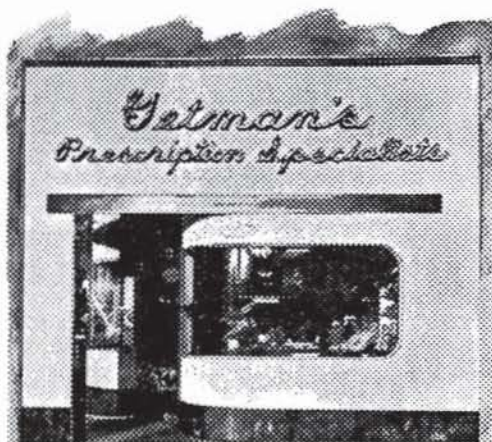
PROMPT

FREE DELIVERY

To All Parts of the City

For 42 Years We Have Tried To  
Serve You Well. Be Assured  
Of Our Appreciation Of  
Your Loyalty and  
Know Of Our Sincere Desire  
To Merit Your Continued  
Confidence.

WE GIVE S. & H. GREEN  
STAMPS



*Sixth and Main Sts.  
Phone - 3 6171*

## CONTENTS

Budget Slash At O.U. ....	7
Perry Named Medical Examiner ....	8
The Medical Library .....	9
President's Page .....	10
Tulsa Medical Review .....	11
Personals .....	12
Society's 40th Anniversary .....	13
Past-Presidents Listed .....	14
March Medical Calendar .....	15
Editorials .....	16

## ADVERTISERS

Audiphone Company .....	18
Babyland .....	20
Ball Drug Company .....	20
Catron Pharmacy .....	20
Ciba Pharmaceutical Products .....	3
Coca-Cola .....	4
Commercial Printing Company .....	24
Courtright Optical Co. ....	24
Coyne Campbell Sanitarium .....	22
Curtain's Prescription Laboratory .....	18
Eli Lilly and Co. ....	6
George A. Breon Company .....	17
Getman Drug Company .....	5
Harvard Drug Company .....	22
Hillcrest Hospital .....	20
Mayo Hotel .....	23
Mead Johnson & Company .....	2
Meadow Gold Dairy .....	23
Medical Arts Prescription Shop .....	4
Medical Credit Bureau .....	21
Merkel X-Ray .....	24
F. H. Paxton Co. ....	19
St. John's Hospital .....	22
William F. Stover Co. ....	24
T. Roy Barnes Drugry .....	17





## **NEW** BECOTIN WITH VITAMIN C

(Vitamin B Complex with Vitamin C, Lilly)

### **HIGH-POTENCY VITAMIN B COMPLEX AND VITAMIN C**

'BECOTIN WITH VITAMIN C' (Vitamin B Complex with Vitamin C, Lilly) furnishes all the known water-soluble vitamins. In addition to the entire vitamin B complex, this product provides a therapeutic dose of the synthesized B vitamins and ascorbic acid.

General debility, lassitude, easy fatigability, anorexia, and belching and fullness after meals are commonly encountered symptoms of vitamin B complex and vitamin C deficiencies.

One Pulvule 'Becotin with Vitamin C' daily is adequate for the treatment of mild deficiencies; two or more pulvules a day are recommended for the more severe cases.

Available at prescription drug stores everywhere.

ELI LILLY AND COMPANY • INDIANAPOLIS 6, INDIANA, U.S.A.



# THE BULLETIN

OF THE

## TULSA COUNTY MEDICAL SOCIETY

E. O. Johnson, M.D., *President*Victor K. Allen, M.D., *President-Elect*D. J. Underwood, M.D., *Vice-President*John E. McDonald, M.D., *Secretary-Treasurer*Jack Spears, *Executive Secretary*

Vol. 13

TULSA, OKLAHOMA, MARCH, 1947

No. 3

## BUDGET SLASH MAY CRIPPLE OU

**School of Medicine and University Hospitals Face Possible Abandonment if Legislature Fails to Approve 1947-48 Budget. Approved Status of School May be Threatened by Such Action.**

Prospects that the Oklahoma University School of Medicine might be seriously crippled by a proposed budget slash were seen last month as Dean J. P. Gray warned the State Legislature that failure to allocate necessary operating funds might lead to the abandonment of the School of Medicine and severe retrenchment in the operation of University Hospital at Oklahoma City.

In an Associated Press story published in Oklahoma newspapers, Dean Gray was quoted as saying that the School of Medicine should be closed rather than attempting to continue on an inadequate budget. "The budgets proposed and requested were planned as necessary for immediate needs in a situation that cannot continue as it is," Dr. Gray stated. "The extensive reductions in the budgets for the school of medicine and for the hospital, including the deletion of the item for the school of nursing, if they prevail, will preclude satisfactory operation of the units comprising the Oklahoma City campus of the University of Oklahoma. Either the budget requests as originally made must be on the basis of appropriation and allocation or plans will have to be made for the discontinuation of the school of medicine, the school of nursing, and the university hospitals because of inadequate financial support."

The crux of the difficulties appears to be the failure of the Board of Regents for Higher Education, an advisory state government group, to approve budget recommendations of the Board of Regents of the University of Oklahoma. Extensive

reductions in the proposals of the latter were made by the Board of Regents for Higher Education in preparing a recommendation on the matter to the current session of the Oklahoma State Legislature. As this issue of The Bulletin went to press, the Legislature had not acted on the matter and its course of action was problematical. The Legislature is not bound to follow the recommendations of the Board of Regents for Higher Education in fixing the budgets for the Schools of Medicine and Nursing, and for University Hospital.

Seen as a salient feature of the controversy was the possibility that Oklahoma University School of Medicine might lose its approved standing with national accrediting agencies. With the American Medical Association now re-examining many schools, many observers believe that inadequate financial resources and resulting deficiencies might cause the School to lose its approved standing. The loss of such standing would be a severe blow to the School, would greatly retard medical progress in the State, and would damage the professional reputations of graduates of the school.

Dean Gray, only recently appointed to his duties, is not permitted under present regulations to go before the legislature except when specifically ordered, and is thus impaired in presenting his case. However, an extensive memorandum has been prepared, setting forth the necessity for a budget as originally proposed.

The Board of Regents for Higher Education reduced the original budget for the



School of Medicine from \$438,540 to \$397,500, or a loss of \$41,040. A general fund request for \$68,560 was deleted, leaving the School of Nursing without support after July 1, 1947. The request of \$1,524,708 for the university hospitals was slashed to \$1,345,000, or a loss of \$179,708.

Additionally the higher regents increased appropriations from the School's revolving fund, resulting in an estimated loss of over \$600,000 in revenue for the biennium. A capital improvements program of \$750,000 was cut to \$200,000. A large capital improvements program for university hospitals of \$3,900,000 was reduced to \$280,000, or only a fraction of the proposed amount.

Included in the capital improvements program as recommended by the Board of Regents of the University of Oklahoma was a \$3,000,000 general hospital of 300-325 beds capacity, a \$300,000 addition to the nurses home, and \$600,000 for an outpatient department, repairs, and additions to present facilities.

Of the possibility of losing an approved status for the school Dean Gray commented: "... the 280 students now in the school would be denied the opportunity of fulfilling their ambitions. The Oklahoma Medical Research Foundation would be anti-climatic, the investments in the buildings, and, more important, in education would be lost."

#### A REMINDER

A few members of the Tulsa County Medical Society have overlooked payment of the 1947 membership dues and are now suspended from membership privileges, pending reinstatement through payment of all outstanding balances. The amount of \$72.00 represents \$50.00 local and \$22.00 state dues, as authorized by unanimous vote of the members present at the annual business meeting of 1946. Members, at their option may pay in two equal installments of \$36.00, one payment due immediately and the second on July 1, 1947. Pay at 1202 Medical Arts Building, Tulsa.

Dr. Gray further stated: "The American Medical Association has stated publicly that a survey of American schools of medicine is to be made beginning in 1947. It is of paramount importance that the University of Oklahoma have adequate support for essential needs (quite definitely not ideal facilities) from the 1947 legislature if its school of medicine is to continue."

#### JOHN C. PERRY NAMED TO MEDICAL EXAMINERS BOARD

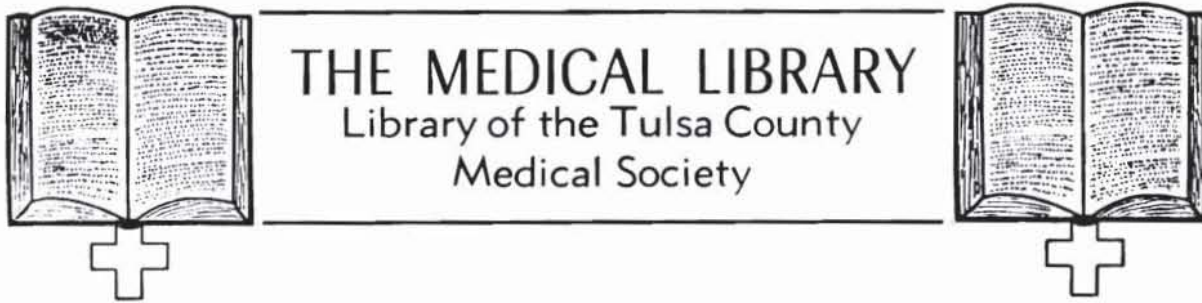
Dr. John C. Perry, immediate past-president of the Tulsa County Medical Society, was last month named a member of the Oklahoma State Board of Medical Examiners by Governor Roy J. Turner. The appointment, announced February 25, must be confirmed by the Oklahoma State Senate.

Other members of the Board as named by Governor Turner are Dr. H. C. Weber, Bartlesville; Dr. C. L. Johnson, Pauls Valley; Dr. O. C. Newman, Shattuck; Dr. Clinton Gallaher, Shawnee; Dr. Everett G. King, Duncan; and Dr. R. B. Gibson, Ponca City. All are new appointees except Drs. Weber, Johnson, and Newman. The Board will elect its own secretary-treasurer who will succeed Dr. James D. Osborn of Frederick, killed in a railway accident February 7.

The appointment of Dr. Perry gives Tulsa its first representation on the Board since the death of Dr. C. E. Bradley in 1942. Widely known in civic and medical circles of Tulsa, Dr. Perry is a son of the pioneer Tulsa physician, Dr. M. L. Perry. The new examiner is a former president of the Tulsa Lions Club. He served first as delegate, then trustee, and most recently (in 1946) as president of the Tulsa County Medical Society. In 1944, Dr. Perry established an annual scholarship for pre-medical students at the University of Tulsa.

Tune in! The Tulsa County Medical Society's own series of medical and health broadcasts — HOW'S YOUR HEALTH? — heard each Tuesday afternoon at 3:15 p.m. over Radio Station KOME, Tulsa.



**Library Committee:**

Robert E. Funk, M.D., Chairman  
 Morris B. Lhevine, M.D.  
 Fred E. Woodson, M.D.  
 W. A. Showman, M.D.  
 John G. Matt, M.D.

Mrs. Billie-David Anderson, Librarian  
 Telephone 4-1461

The Library Committee is pleased to announce the appointment of Mrs. Billie-David Anderson as Librarian to the Tulsa County Medical Society, effective February 21, 1947. She succeeds Mrs. Veneta R. Osborn, resigned.

Mrs. Anderson is a trained and experienced librarian with a certificate in library science from the University of Oklahoma. A native Tulsan, she was formerly Librarian for the Air Service Command at Fort Worth, Texas. In the same city she organized and directed the technical library of the Consolidated-Vultee Aircraft Manufacturing Corporation. Later, she was Assistant Librarian at the Main Navy Library at Washington, D. C., and more recently has been on assignment with the United States Engineers in the establishment and direction of seven engineering libraries in Canada and Alaska. Mrs. Anderson is a member of Alpha Gamma Delta sorority, professes a rabid interest in ice hockey and her hobbies of collecting books and antiques.

The Library Committee wishes to thank the members of the Tulsa County Medical Society for their patience with the irregular library hours of the past six weeks. The Library is now open from 9:00 a.m. to 5:00 p.m. daily Monday through Friday, and from 9:00 a.m. to 1:00 p.m. on Saturdays, and the usual library services available during those hours.

Robert E. Funk, M.D., Chairman

Several members of the Tulsa County Medical Society have suggested that the Medical Library be opened on certain nights each week for the benefit of physicians who are unable to visit it during the day. Such action at the present time might necessitate closing the Library during part of the day in order not to place an undue hardship upon the limited personnel. The Library Committee will appreciate your comments and suggestions on this proposal.

A large number of gifts of books and journals, as well as some contributions of money, have been received by the Medical Library during the past two months. It has not been possible to publicly acknowledge these gifts, due to the lack of a librarian, but this evidence of interest in the progress and development of the Library is sincerely appreciated.

**USE YOUR LIBRARY**

# PRESIDENT'S PAGE

The nation's doctors have been advised by Senator Robert F. Wagner that he will again reintroduce into the Congress the perennial Wagner-Murray Bill for the creation of a system of state medicine in this country. It has been almost ten years since the New York senator first advanced his proposals for medical and hospital care as a social security benefit. His successive bills, each more extensive in scope than its predecessor, have been fortunately allowed to die in committee. But, for a decade, the medical profession has faced the necessity of defending many damaging charges of inefficiency and inadequacy brought by the proponents of Wagner-Murray medicine. In a way, this has been very beneficial. It has permitted the profession to bring to public attention the progress and accomplishments made under a free system of medical practice and research. It has also encouraged the correction of many deficient conditions in health and medical care, as for instance the creation of non-profit physician-sponsored plans of prepaid medical and surgical care insurance. However, with the recurrent introduction of the Wagner-Murray bills, there has been a tendency for many doctors to regard the possibility of state medicine lightly, to count it as a periodic nuisance. This sort of attitude is dangerous. As doctors, we must not underestimate the forces which are working against us. The relaxation of our fight for personal and professional freedom from government operation and administration might well be fatal. We must again take up the challenges of Mr. Wagner and make every effort to permanently remove this threat to the maintenance of American principles of democracy.

Sincerely,



President.



## TULSA MEDICAL REVIEW

### Dr. Ishmael March Speaker

Dr. William K. Ishmael, associate professor of medicine at the University of Oklahoma School of Medicine, Oklahoma City, will be the principal speaker at the March 24 meeting of the Tulsa County Medical Society. His subject will be "Rheumatism In The Aged." The meeting will be at 8:00 p.m. at The Mayo Hotel. A member of the staff of McBride Clinic of Oklahoma City, Dr. Ishmael's studies in rheumatic fever have been given wide attention in national medical circles.

### New Medical Office Building

Exclusive utilization of the three-story Braniff Building at Sixth and Main streets to house medical offices was announced last month by Herbert Barall, manager. Work on an extensive program of remodeling and improvement on the interior has begun, Barall said, and will be completed by next Fall. Some present non-medical tenants have been given notice to vacate by April 1 or at the expiration of present leases. An investment of \$50,000 will be made. The number of physicians to be accommodated has not been determined. Physicians presently housed in the Braniff Building are Dr. Paul N. Atkins, Jr., Dr. Logan A. Spann, Dr. William Buchan, Dr. Rayburne W. Goen, and Dr. William F. Thomas, Jr.

### Tulsa Hospitals Approved

Hillcrest Memorial and St. Johns hospitals of Tulsa are among five hospitals in Oklahoma approved for intern training by the American College of Surgeons. Only 37 of the State's 135 hospitals were given medical approval by the College's yearly inspection. At least 63 hospitals approved last year have been dropped from the list.

### Education VD Weapon

Speaking before an opening meeting of the Tulsa County Medical Society on February 4, Dr. John R. Heller, assistant surgeon general of the United States Public Health Service, Washington, declared sex education the major weapon

in the fight against venereal diseases. Dr. Heller asserted such education should come from the parents, but acknowledged public school instruction in the subject desirable if the parents fail this duty. The venereal disease control official told a Social Hygiene Day audience that control of VD had gone beyond mere medical advances of treatment into an organized effort to preserve "the American democracy of family union."

### Health Educator Resigns

Mr. Milton L. Shurr, health educator with the City Health Department, resigned his post effective February 8 to accept a similar post in Chicago. Brought to Tulsa for a three-year project of health education, Shurr's resignation followed less than eight months after assuming his duties. He is the second person in the position to resign in slightly more than a year.

### St. John's Completes Unit

St. John's Hospital of Tulsa has virtually completed construction on a modern six-story addition to the institution which will add a minimum of 200 beds to the present facilities. The new structure is located on the South side of the Hospital and is constructed in matching architecture. The Hospital hopes to have the addition opened for occupancy by the summer months. St. John's is also completing an addition to its present nurses home, located in the rear of the Hospital, which will greatly alleviate crowded conditions in the present quarters.

### Hillcrest Campaign Opens

A campaign to raise in excess of \$2,000,000 to finance additions to Hillcrest Memorial Hospital of Tulsa has been announced by Bryce L. Twitty, administrator. Through public contributions, the Hospital plans to build a modern nine-story structure on the area to the immediate west of the present building. A variety of hospital facilities will be included, all of the most modern architectural design. Under present plans the new addition will include an obstetri-



cal ward, delivery rooms, and nursery. The present Hillcrest Lying-In Hospital will be utilized for other purposes.

#### **Annual Meeting Plans Set**

Plans for the 54th annual meeting of the Oklahoma State Medical Association at Tulsa next May 14-16 are virtually complete, General Chairman John E. McDonald has announced. Only two major sections in Medicine and Surgery will be held, with other sections to be represented in the programs of these two groups. The decision to eliminate the multiple specialized section meetings in favor of the two basic sections was made by the 5 to 1 vote of the House of Delegates. All meetings of the scientific sections will be at The Mayo. Dr. Maurice J. Searle, scientific works chairman, reported in late February that the selection of out-of-state guest speakers had been virtually completed. Announcement of the complete program will appear in the April issue of the Journal of the Oklahoma State Medical Association. Dr. H. B. Stewart, chairman of the Hotels Committee for the convention, has announced that all reservations should be made directly to the Hotels Committee, Tulsa County Medical Society, 1202 Medical Arts Building, Tulsa. Please specify dates, number of persons, and approximate price of accommodations desired. Preferences in hotels should be indicated, although it will be necessary for the convention to use all large hotels of Tulsa to accommodate visitors. All reservations will be confirmed directly by the hotel.

#### **Medical Leader Dies**

Dr. James D. Osborn, 67, secretary-treasurer of the Oklahoma State Board of Medical Examiners and nationally known in medical circles, was killed February 7 in a railway accident near Springfield, Missouri. A resident of Frederick, Oklahoma, he was known to most Tulsa doctors. As president of the Oklahoma State Medical Association in 1943, he gave the state organization an unusually progressive administration. Dr. Osborn's activities as secretary-treasurer of the Oklahoma State Board of Medical Examiners led to his election as president of the National Association of Medical Ex-

aminers last year. A graduate of Tulane University School of Medicine, Dr. Osborn practiced the specialty of ophthalmology and otolaryngology.

#### **Ruling on Assessment**

The Oklahoma State Medical Association has advised all members that annual membership dues for 1947 cannot be accepted until the \$25.00 special assessment levied last year is paid. Only a very few have not paid this assessment, and must do so if their membership is to be continued. Action to substantiate this procedure was taken at the January 29 meeting of the Council.

## PERSONALS

DR. WILLIAM C. ELLER has taken new office quarters at 209 Medical Arts Building, where he will be associated with DR. E. O. JOHNSON in the practice of obstetrics.

Speakers on the Tulsa County Medical Society's "How's Your Health?" series of radio programs over Radio Station KOMA last month were DR. WALTER E. BROWN, DR. JOHN C. PERRY, and DR. MARVIN D. HENLEY. The series is heard each Tuesday afternoon at 3:15 p.m.

DR. JOHN E. McDONALD has returned from a combined vacation and business trip to Chicago and Detroit.

DR. EARL M. LUSK is ill at the United States Veterans Hospital at Excelsior Springs, Missouri.

DR. W. CARL LINDSTROM and DR. GEORGE R. OSBORN have taken new office quarters at 1001 Medical Arts Building, Tulsa.

DR. FRANK J. NELSON and DR. FRED A. GLASS report that their attractive new clinic near St. John's Hospital is nearing completion.

Speakers for the Hillcrest Hospital staff meeting of February 3 were DR. W. A. WALKER, DR. A. H. UNGERMAN, DR. H. D. MURDOCK, DR. JOHN F. GORRELL, and DR. LEO LOWBEER.

DR. LOGAN A. SPANN is now serving as the secretary of the staff of Hillcrest Memorial Hospital.



## SOCIETY OBSERVES 40TH ANNIVERSARY

**Dr. W. Albert Cook Served As President of the  
Tulsa County Medical Society During First Year.  
Twelve Physicians were Charter Members.**

During the month of March, 1947, the Tulsa County Medical Society will observe the fortieth anniversary of the founding of the organization. In the four decades since 1907, Tulsa physicians have been prominent among the civic leaders who guided the community from an oil-spattered cowtown to the modern and progressive skyscraper city of today. In medicine, they have shown the way for the development of specialized medical services of qualitative proportions. In the field of medical economics, they have taken the lead in organization of valuable programs of public relations, medical and health education, prepaid medical care insurance plans, and many other projects of mutual benefit to the public and profession alike.

As a means of creating standards of medical practice in the Tulsa area and in promoting scientific study of medicine, a small group of Tulsa physicians formed the Tulsa County Medical Society during the early months of 1907. The Society was duly chartered as a component member of the Oklahoma State Medical Association in March, 1907, when the late Dr. James Vance of Checotah, an Association councilor, presided at installation ceremonies. The American Medical Association formally approved the creation of the Society in early April, enabling the sending of delegates to the state convention at Shawnee in May, 1947.



**DR. W. ALBERT COOK**

Dr. W. Albert Cook, an energetic young ophthalmologist, was named as first president of the Tulsa County Medical Society. Serving throughout 1907, he directed the Society through its first formulative year, working consistently in behalf of general medical interests in Tulsa County. In later years he was to remain a guiding influence, not only to the Tulsa County Medical Society but as an officer and leader in both the Oklahoma State Medical Association and the American Medical Association. Dr. Cook is still in active practice with offices in the Medical And Dental Arts Building, where he delights in asserting that the first year of the Tulsa County Medical Society was its best year.

Some attempt was made to organize a professional medical group in Tulsa as early as 1906, a year before the chartering of the present organization, when a dozen physicians met irregularly in the old Malcomb Building on East 2nd Street for what Tulsa historians have described as "informal discussions". The late Dr. Charles L. Reeder was a semi-official chairman of this group, which constituted the nucleus of the charter membership of the present organization.

Recorded as charter members of the Tulsa County Medical Society were Dr. C. L. Reeder, Dr. C. Z. Wiley, Dr. W. Albert Cook, Dr. G. H. Butler, Dr. T. F. Dailey, Dr. S. D. Hawley, Dr. J. E. Webb, Dr. S. H. Kimmons, Dr. N. W. Mayginn, Dr. C. T. Hendershot, Dr. R. S.



## MEDICAL SOCIETY PAST-PRESIDENTS

In answer to many requests the following complete list of past presidents of the Tulsa County Medical Society is published.

1907	W. Albert Cook, M.D.
1908	R. S. Wagner, M.D.
1909	W. Q. Conway, M.D.
1910	G. H. Butler, M.D.
1911	Ross Grosshart, M.D.
1912	Walter E. Wright, M.D.
1913	W. W. Brodie, M.D.
1914	N. W. Mayginnes, M.D.
1915	Paul R. Brown, M.D.
1916	W. H. Rogers, M.D.
1917	A. W. Roth, M.D.
1918	H. D. Murdock, M.D.
1919-20	Gregory A. Wall, M.D.
1921	A. W. Pigford, M.D.
1922	Charles H. Ball, M.D.
1923	R. W. Dunlap, M.D.
1924	Arthur V. Emerson, M.D.
1925	Horace T. Price, M.D.
1926	C. S. Summers, M.D.
1927	George R. Osborn, M.D.
1928	W. J. Trainor, M.D.
1929	C. T. Hendershot, M.D.
1930	John F. Gorrell, M.D.
1931	Henry S. Browne, M.D.
1932	C. J. Woods, M.D.
1933	C. H. Haralson, M.D.
1934	Ned R. Smith, M.D.
1935	R. M. Shepard, M.D.
1936	Walter S. Larrabee, M.D.
1937	James Stevenson, M.D.
1938	M. J. Searle, M.D.
1939	A. Ray Wiley, M.D.
1940	R. C. Pigford, M.D.
1941	J. C. Brogden, M.D.
1942	H. B. Stewart, M.D.
1943	James C. Peden, M.D.
1944	Ralph A. McGill, M.D.
1945	H. A. Ruprecht, M.D.
1946	John C. Perry, M.D.
1947	E. O. Johnson, M.D.

Wagner, and Dr. W. H. Rogers. Of this group, Dr. Cook is the only member still living.

Despite its 40 years of age, the Tulsa County Medical Society is one of the youngest county medical groups in the State of Oklahoma. Most of the present component members of the Oklahoma State Medical Association were formed before the turn of the century. Many were members of the old Indian Territory Medical Association which came into existence shortly after the opening of the Cherokee Strip in 1889. This youthfulness of the Tulsa organization is attributed to the fact that Tulsa did not begin to grow and progress until after the discovery of oil at Glen Pool in the Red Fork area in 1905. Until that time, it had little to distinguish it from a score of small trail towns.

In April, 1947, Dr. J. E. Wallace, Tulsa gynecologist, will celebrate his fortieth anniversary as a practicing physician in Tulsa. Coming to this city in 1907, he has remained in active practice without interruption. With the exception of Dr. W. Albert Cook, Dr. Wallace has the longest record of active practice among Tulsa physicians. Dr. P. H. Mayginnes, who came to Tulsa in 1908, ranks third. Two doctors now in retirement, Dr. Fred S. Clinton and Dr. Paul R. Brown, antedate these men.

"A History Of The Tulsa County Medical Society," an illustrated 60-page record of the Society published in 1945, is still available without charge at the Executive Offices. Only a few copies remain, however.

DR. ELLIS JONES is vacationing in Los Angeles, California.

DR. JAMES STEVENSON was speaker for the February 17 meeting of the Osage County Medical Society at Pawhuska.

DR. H. J. RUBIN has been elected to the Board of Directors of the Society for the Prevention of Cruelty to Animals.

DR. MANUEL BROWN has taken offices at 1619 East 15th Street, Tulsa.

DR. SAMUEL GOODMAN has been ill at St. John's Hospital.

DR. WALTER S. LARRABEE has returned from an Eastern vacation.



## MARCH MEDICAL CALENDAR

**SATURDAY, March 1st:**

Final date on which members of the Tulsa County Medical Society may pay 1947 annual membership dues before suspension.

**MONDAY, March 3rd:**

Hillcrest Hospital Staff Meeting.

**TUESDAY, March 4th:**

Medical Broadcast "Modern Nutrition," Radio Station KOME, 3:15 p.m. Speakers from the Tulsa Dairy Council.

**FRIDAY, March 7th:**

Board of Trustees Meeting, Tulsa County Medical Society, 1:00 p.m., Mezzanine of Medical Arts Coffee Shop.

**MONDAY, March 10th:**

No Tulsa County Medical Society meeting on this date.

**TUESDAY, March 11th**

Medical Broadcast, "The Rh Factor," Radio Station KOME, 3:15 p.m. Dr. William C. Eller, speaker.

**WEDNESDAY, March 12th:**

Medical Credit Bureau Committee Meeting, Tulsa County Medical Society, 1:00 p.m., Mezzanine of Medical Arts Coffee Shop.

**SATURDAY, March 15th:**

Final date for filing of federal and state personal income taxes.  
Copy Deadline For The April Issue of The Bulletin.

**MONDAY, March 17th:**

St. John's Hospital Staff Meeting.

**TUESDAY, March 18th:**

Tulsa County Medical and Dental Assistants Meeting. Time and place to be announced.

Medical Broadcast, "New Diagnostic Methods," Radio Station KOME, 3:15 p.m. Dr. H. Lee Farris, speaker.

**FRIDAY, March 21st:**

Board of Trustees Meeting, Tulsa County Medical Society, 1:00 p.m., Mezzanine of Medical Arts Coffee Shop.

**MONDAY, March 24th:**

Tulsa County Medical Society, Scientific Meeting, The Mayo, 8:00 p.m. Program: "Rheumatism In The Aged," William K. Ishmael, M.D., associate professor of medicine, University of Oklahoma School of Medicine, Oklahoma City, Oklahoma.

**TUESDAY, March 25th:**

Medical Broadcast, "Slight Conservation," Radio Station KOME, 3:15 p.m. Dr. Donald V. Crane, speaker.

**FRIDAY, March 28th:**

Bulletin Committee Meeting, Tulsa County Medical Society, 1:00 p.m., Mezzanine of Medical Arts Coffee Shop.

**The BULLETIN**

GIFFORD H. HENRY, M.D.

*Editorial Supervisor*

WILLIAM C. ELLER, M.D.

HENRY A. BROCKSMITH, M.D.

*Associate Editors*JACK SPEARS, *Managing Editor*

*Published monthly on the 3rd day of each month at the executive offices of the Tulsa County Medical Society, 1202 Medical Arts Building, Tulsa, Oklahoma.*

Vol. 13

MARCH, 1947

No. 3

**FALSE ECONOMIES**

Elsewhere in this issue of *The Bulletin* appears a news story concerning the effect of proposed cuts in the biennium budget of the Oklahoma University School of Medicine and its affiliated hospitals and schools of nursing. Tulsa physicians are hopeful that the Oklahoma State Legislature, presently in session at the capitol, will see fit to disregard the suggested budget reductions and accept and approve the original budget as conscientiously created by the Dean of the School of Medicine. Such action will permit the continuance of progressive medical education in this State and will insure a more just and equitable distribution of tax funds set aside for the institutions of higher learning in Oklahoma. Should the State Legislature elect to approve the recommendations of the Board of Regents for Higher Learning for a greatly reduced budget for the medical school, Oklahoma Medicine will have been dealt a stinging blow. Such inadequate financial support will seriously impair the efficient and progressive operation of the school and its affiliates, and it is more than likely that such impairment will result in the School of Medicine being dropped from the list of approved institutions as determined by national accrediting agencies. The loss of approved status is tantamount to closing

the school for it could not survive under such conditions. The net result of such action, taken as a measure of alleged economy, would be to dissipate the efforts of scores of teachers and alumni over the past several decades, to completely lose an investment of several million dollars, to greatly disaccommodate the present student body, to stifle the foresighted plans for medical research in the State, and to severely damage the professional reputation of hundreds of competent physicians who are graduates of the School.

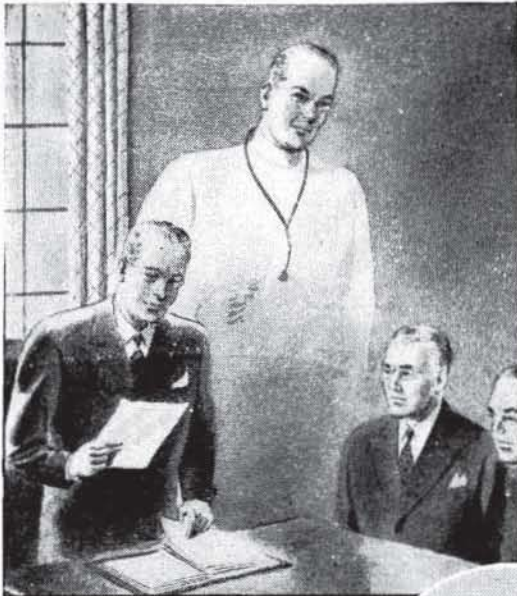
It is to be hoped that by the time this editorial appears in print, the State Legislature will have recognized the folly of attempting to operate the School of Medicine on a deficient budget. Certainly if Oklahoma physicians have their way, legislators will be given a full opportunity to understand the disastrous significance of such a move by the politically minded. At a time when the Oklahoma University School of Medicine appears to have attained a maturity of progressive effort, with the Oklahoma Medical Research Foundation off to such an auspicious beginning, it appears almost criminal for such mistaken economies to be suggested. Whatever support can be given to the proponents of progressive medical teaching in Oklahoma will be forthcoming from the Tulsa County Medical Society, and the maintenance of adequate facilities and faculty standards at the Oklahoma University School of Medicine would be the initial step in such projects of assistance.

**DR. JAMES D. OSBORN**

The untimely death of Dr. James D. Osborn takes from Oklahoma Medicine a most valued leader who cannot be readily replaced. His progressive administration of the Oklahoma State Board of Medical Examiners, of which he was Secretary-Treasurer, won him wide respect and honor as attested by his election to the presidency of the National Association of Medical Examiners. As president of the Oklahoma State Medical Association during a critical war year, he culminated years of faithful service to

(Continued On Page 19)





## a good administrator

*administers adequate B complex in a form that insures utilization*

*When symptoms of B complex deficiency are definite and the patient's need is greater than even a fortified diet can supply—then a decisive agent such as Breonex-Stronger is an essential.*

*The important factors of vitamin B complex are, through Breonex-Stronger, imparted parenterally. The amounts are substantial, absorption certain, effect rapid.*

*Each cc contains: thiamine hydrochloride 10 mg., riboflavin 0.5 mg., pyridoxine 1 mg., nicotinamide 25 mg.*

*Breonex-Stronger  
Solution*

Available in 2 cc size ampuls and 10 cc size rubber capped vials.



Breonex is the trademark of

**George A. Breon & Company**

KANSAS CITY, MO.

NEW YORK

ATLANTA

LOS ANGELES

SEATTLE

# Prescriptions Exclusively

# T. ROY BARNES D R U G R Y

*Free Delivery*

603 S. Boulder

Phone 2-3119

# GOOD WILL

is the one and only asset  
that competition cannot  
undersell or destroy . . . .

## CURTAINS PRESCRIPTION LABORATORY

SIXTH AND BOULDER

PHONE 4-7116

*A Strict Ethical Pharmacy in Policy and Appearance*



JOHN L. STANLEY, Mgr.

## BETTER HEARING

Made possible by

## BELL TELEPHONE RESEARCH

with the New  
Electronic Model

*Western Electric*  
AUDIPHONE HEARING AID



415 South Boston

Phone 4-8788

Res. 7524

Accepted by A. M. A. Council of Physical Therapy



**EDITORIAL**

(Continued from Page 16)

the profession with a valuable program of progressive endeavor. Respected as a physician and as an influential medical leader, Dr. Osborn will be deeply mourned by his many friends in Tulsa County and elsewhere over the State of Oklahoma.

DR. GEORGE M. ADAMS, 902 Medical Arts Building, Tulsa, has been elected to membership in the Tulsa County Medical Society.

DR. RALPH A. MCGILL plans to return to Tulsa March 15 after a vacation of several weeks in Tucson, Arizona.

The Tulsa County Medical Society extends its sympathy to the following physicians, each of whom have been saddened by the loss of a parent: DR. THOMAS J. HARDMAN, DR. HAROLD J. BLACK, DR. M. V. STANLEY, and DR. CARL F. SIMPSON.

DR. D. L. GARRETT is up and around again after an illness of several months due to injuries sustained in an automobile accident last Fall.

DR. HARRY GREEN has taken new office quarters at 311 Medical Arts Building, Tulsa.

DR. JOHN C. PERRY was presented with an engraved plaque in appreciation of his services as president of the Tulsa County Medical Society in 1946, at the regular Society meeting of February 24.

DR. V. K. ALLEN is confined to Hillcrest Hospital, where he is recuperating from a serious illness.

DR. DONALD V. CRANE has been named chairman of the Medical Credit Bureau, succeeding DR. JOHN F. GORRELL, resigned.

DR. JAMES C. PETERS has been elected a member of the Tulsa Lions Club.

DR. DAVID J. UNDERWOOD has been named President, and DR. R. M. WADSWORTH Secretary-Treasurer, of the Tulsa Pediatrics Association.

**Check these 7 advantages**



**TRI-CALSATE**

**THE BUFFERED GASTRIC ANTACID**

1. TRI-CALSATE neutralizes the HCl of the gastric contents and desensitizes the pain producing mechanism.
2. There is no evolution of carbon dioxide during the reaction in the stomach, hence the distress from gastric distention and belching is eliminated.
3. It does not make the gastric contents alkaline.
4. The possibility of the development of alkalosis is minimized.
5. The probability of gastro-intestinal irritation is remote.
6. It does not injure the kidneys.
7. It is palatable and convenient to take.

The nucleus of the peptic ulcer problem lies in the neutralization of excess HCl in the stomach contents by an antacid that will meet the requirements of real physiologic and therapeutic economy.

Approx. percentage composition when in aqueous suspension:

Tri-calcium phosphate U. S. P.....	35.5
Tri-sodium phosphate crystals.....	12.5
(arsenic free)	
Sodium citrate crystals.....	52.0
	100.0

Available on  $\frac{1}{2}$  in 4 1/2-oz. and 18-oz. bottles  
Write for trial package and literature.

**F. H. PAXTON & SONS, INC.**

469 E. OHIO ST. Manufacturing Pharmaceutical Chemists CHICAGO 11, ILL.

*A  
Complete  
Prescription  
Service*

Covering Tulsa's East Side  
With Motor Delivery

Telephone 6-2156

**BALL DRUG STORE**

College at Admiral  
DICK KELLO, Owner

**HILLCREST  
MEMORIAL  
HOSPITAL**

*One of Oklahoma's  
finer hospitals*

1653 East Twelfth St.

Telephone 3-2131

TULSA, OKLAHOMA

*Special Service*

For the expectant mother  
and the Baby . . .  
Every Material Need . . .

**Scales for Rent  
Feeding Supplies  
Paley's Foods**

*Babyland*

14 E 6th St. Ph. 3-7149  
Tulsa

**CATRON  
PHARMACY**

Northwest Corner  
11TH AND HARVARD

*Reliable  
Prescription  
Service*

TELEPHONE 6-2101

FRESH — CLEAN — COMPLETE  
PRESCRIPTION STOCK

*Free Prescription Delivery*

GWYN S. CATRON, Owner





## *The Emblem Of Approval*

Confidence and trust are underlying assets of any business or profession. They constitute the basic foundation for the successful practice of medicine. They are equally important in successful medical administration. Several years ago, the Tulsa County Medical Society recognized the need of a medical collection agency designed by and for the doctors exclusively. The result was The Medical Credit Bureau. The confidence and trust placed in this organization is attested by the emblem of the Tulsa County Medical Society, which appears on all stationery and printed matter. Collection methods are prescribed by doctors. The results obtained through this method make The Medical Credit Bureau the outstanding medical collection agency in Tulsa. That fact is illustrated by its list of clients, which constitute 80 per cent of the Tulsa medical profession.

Send Your Delinquent Accounts Now  
To Tulsa's Finest Collection Service

### **MEDICAL CREDIT BUREAU**

*Official Collection Agency of The Tulsa County Medical Society*

1202 Medical Arts Building

Tulsa, Oklahoma

Telephone 4-8161

Send Your Delinquent Accounts Now to

**Tulsa's Finest Collection Service**

## **MEDICAL CREDIT BUREAU**

*Official Collection Agency of The Tulsa County Medical Society*

**1202 Medical Arts Bldg.**

**Phone 4-8161**

## **ST. JOHN'S HOSPITAL**

*A Leading  
Institution*

*In  
Oklahoma  
Medicine*

1923 SOUTH UTICA  
TULSA, OKLAHOMA

TELEPHONE  
6-2161

## **HARVARD DRUG STORE**

B. C. SPINN, Owner

PHONE 6-2186

*The  
Suburban  
Prescription  
Store*

FREE  
PRESCRIPTION  
DELIVERY

3244 E. 11th St.  
Tulsa

## **THE COYNE CAMPBELL SANITARIUM**

*For Nervous And Mental Disorders*

**131 N. E. 4TH STREET**

**OKLAHOMA CITY 4, OKLA.**

**TELEPHONE 3-0433**



ALWAYS  
UNIFORM  
DEPENDABLE  
SUPERIOR



**HOMOGENIZED**

(SOFT-CURD)

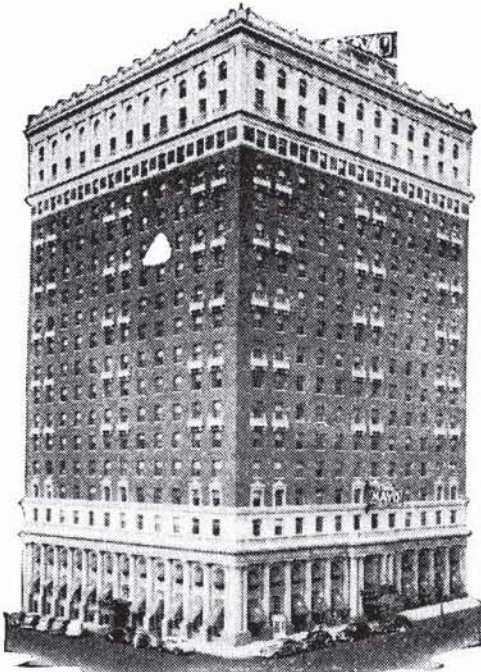
**VITAMIN D**

(400 U. S. P. Units Per Quart)

**MEADOW GOLD MILK**

**BEATRICE CREAMERY COMPANY**

Telephone 4-2471



Quiet, Restful Rooms,  
All with Bath, are

*OK*

For Your Out-of-Town  
PATIENTS



Hold Your Convention  
and Meetings at

**The MAYO**

Tulsa, Okla.

SEC. 562, P. L. & R.

U. S. POSTAGE

**PAID**

TULSA 3, OKLA.

PERMIT No. 13

(Return Postage Guaranteed)

*Distinctive Prescription Service for the Eye Physician*

## **COURTRIGHT, Optician**

IN THE  
COURT ARCADE

Tulsa, Oklahoma

Telephone 4-1613

### **MERKEL X-RAY CO.**

*Exclusive Distributors For—*

**Westinghouse X-Ray Equipment**

**Burdick and High Tension  
Physical Therapy Equipment**



**Complete Stock  
X-Ray and Physical Therapy  
Supplies**



**TULSA**

1114 S. Boulder                      Tel. 2-4897

**OKLAHOMA CITY**

901 N. 12th                              Tel. 2-3522

### **WM. T. STOVER CO.**

**Hospital and Physicians  
Equipment and Supplies  
Keleket X-Ray Equipment**

*The Complete  
Surgical Supply Store*

We carry a complete stock of instruments, rubber goods, surgical dressings, sutures, laboratory stains or reagents, enamel-ware, examining room furniture, wheel chairs, supports and trusses.

**Call Or Write Us  
For Prompt Delivery  
PHONE 2-8169                      TULSA  
610 SOUTH MAIN**

## **Commercial Printing Company** **PRINTERS**

*We Print the Bulletin*

**OFFICE AND PLANT AT 417 EAST 3RD STREET**

R. W. (Bob) HUDSON

Publications, Programs  
Advertising Literature,  
Office and Factory Forms  
Fine Personal Stationery

**TELEPHONE 2-2450**