



THE BULLETIN

of the Tulsa County Medical Society

Fight Famine

IN THIS ISSUE



Tulsa County Medical Society
1946 Membership Roster



Tulsa Medical Directory



Your 1947 Programs



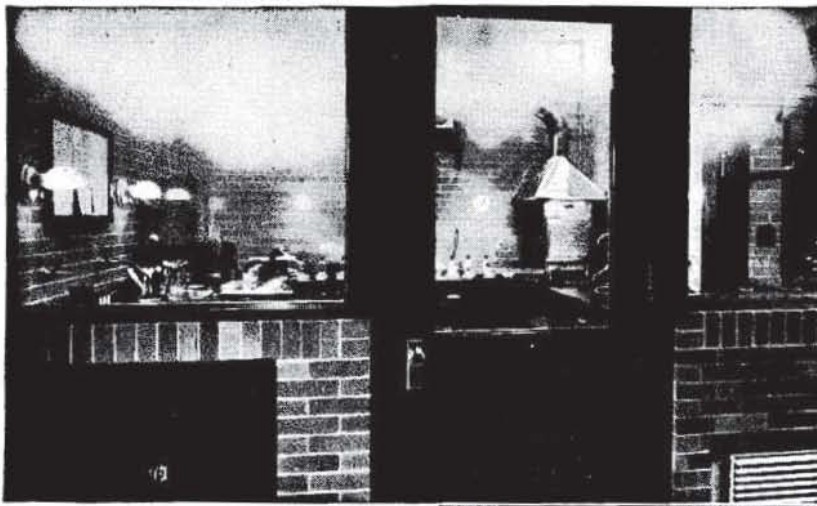
The Medical Library

LIBRARY
TULSA COUNTY MEDICAL SOCIETY

Vol. 12

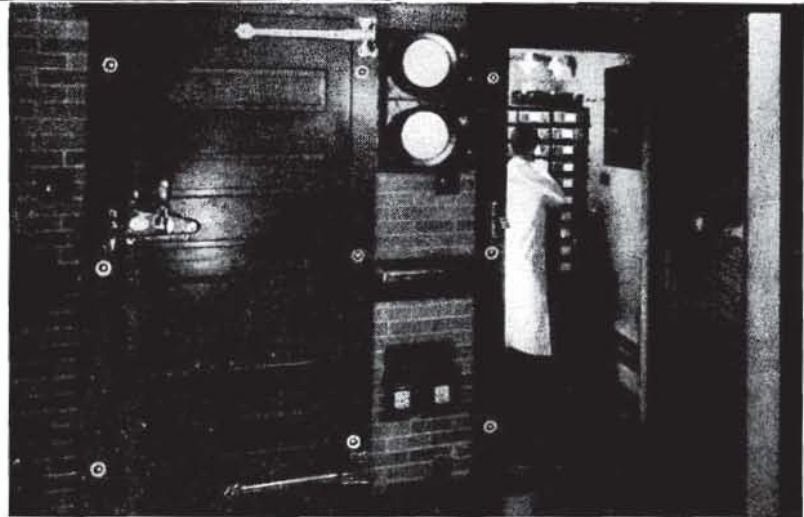
No. 8

August, 1946



STEAM-WASHED PLATING ROOM where bacteriological analyses are made with every precaution to prevent contamination. All air taken into this glassed-in room is filtered. At frequent intervals, jets of live steam are employed to wash the air free of dust.

LARGE INCUBATORS, each with a capacity for 1600 Petri dishes, offer facilities for the numerous bacteriological tests made daily to assure the purity of Dextri-Maltose. Electrically heated and equipped with recording thermometers, the incubators can be varied from room temperature to 60° C. Uniform temperature is maintained within ± 1 degree.



Only the Most Modern Equipment for **Testing DEXTRI-MALTOSE**

EVERY type of equipment conducive to speed and accuracy in bacteriological tests is available in the Mead Johnson Laboratory. Steam- and electrically-heated sterilizers are automatically controlled. One of these has a capacity of 75 liters of media and required installation of a special steam line. Besides the large incubators shown above, the laboratory has a number of smaller ones which, together with cold-storage rooms, permit any desired temperature from -20° to 80° C. There is complete centrifuge equipment, including a supercentrifuge with a capacity of 40,000 R.P.M. Small equipment is of similar high standard—precision glassware for measuring and sensitive balances for weighing, as examples. All these facilities, together with many others, have been proved worth while for sanitary control in infant feeding, as is shown by a quarter century of experience.

"The True Measure of Economy Is Value, Not Price"

SANITARY CONTROL OF DEXTRI-MALTOSE . . . (NO. 6 OF A SERIES)

Please enclose professional card when requesting samples of Mead Johnson products to cooperate in preventing their reaching unauthorized persons. MEAD JOHNSON & COMPANY, Evansville 21, Indiana, U.S.A.

Today's Patients...

**How Many Require
Hormone
Therapy?**



Accumulating clinical evidence suggests very strongly the therapeutic value of the steroid sex hormones in the treatment of many conditions not hitherto associated with endocrine dysfunction.

Ciba, as a pioneer in sex hormone research and development, offers the profession a complete line of hormone products, in ampul, linguet and tablet form.

More detailed information on hormone therapy may be obtained by writing the Professional Service Department for the "Endocrine Review" series.



CIBA PHARMACEUTICAL PRODUCTS, INC.
SUMMIT, NEW JERSEY

In Canada: Ciba Company Limited, Montreal

PERANDREN

...potent androgen, Ciba's testosterone propionate, which, in addition to its more obvious indications such as eunuchism, hypogonadism and the male climacteric shows value in angina pectoris, and by virtue of its nitrogen-retaining properties, in conditions of general debility and malnutrition.

DI-OVOCYLIN

...Ciba's α -estradiol dipropionate distinguished by potency and duration of effect in menopausal syndrome, and other gynecologic conditions, shows value in the treatment of peripheral vascular disease and other experimental indications.

Perandren and Di-Ovocylin—T.M. Reg. U.S. Pat. Off.

THE DOCTOR CAN WAIT

★ How often have you heard it said, "I've paid all my bills except the doctor's. He can wait"?

When we have recovered, the fearful urgency of that night call is easily forgotten. In answer to our frantic call, what if the doctor had said, "Oh, it's nothing serious. Wait until morning and come down to the office." The chances are we would agree to pay double if he would come at once.

Health is not an item for trade and barter. In fact, the only wealth is health. Consider your doctor bill as your best investment in the continued enjoyment of life. As pharmacists, we stand ready to fill your prescriptions promptly and accurately.



MEDICAL ARTS PRESCRIPTION SHOP

In The Medical Arts Building

TULSA, OKLAHOMA

TELEPHONE 4-0121

O. L. Prather, Owner

GETMAN'S

ROY R. GETMAN, Founder

PROMPT

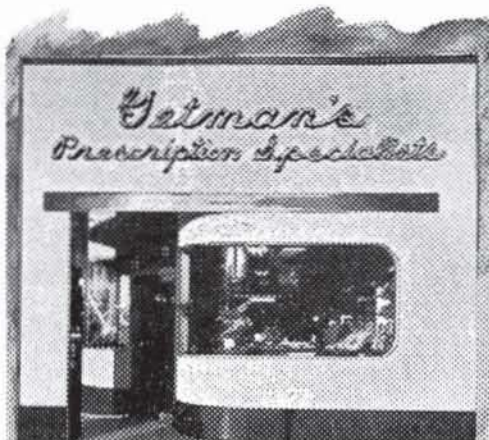
FREE DELIVERY

To All Parts of the City

41 Years of "Know How" Plus
a Sincere Desire to Serve
You and Your Patients
in the Most Ethical
Way.

WE GIVE S. & H. GREEN
STAMPS

Prompt
Free Delivery



Sixth and Main Sts.
Phone - 3 6171

CONTENTS

OPA Death May Affect Medicine	7
President's Page	8
1946 Membership Roster	9
Tulsa Medical Directory	13
The Medical Library	15
Your 1947 Programs	16
Medical Calendar	18
Dr. W. W. Bessley Obituary	20
Personals	20
Special Assessment	20

ADVERTISERS

Audiphone Company	19
Babyland	21
Ball Drug Company	21
Catron Pharmacy	21
Ciba Pharmaceutical Products	3
Coca-Cola	6
Commercial Printing Company	24
Courtright Optical Co.	22
Coyne Campbell Sanitarium	22
Curtain's Prescription Laboratory	17
Flowerland	19
George A. Breon Company	17
Getman Drug Company	5
Harvard Drug Company	22
Hillcrest Hospital	22
Mayo Hotel	23
Mead Johnson & Company	2
Meadow Gold Dairy	23
Medical Arts Prescription Shop	4
Medical Credit Bureau	14
Merkel X-Ray	24
St. John's Hospital	21
William F. Stover Co.	24
T. Roy Barnes Drugry	6
Winterringer Funeral Home	24

*Prescriptions
Exclusively*

**T. ROY BARNES
D R U G R Y**

Free Delivery

603 S. Boulder

Phone 2-3119



THE BULLETIN

OF THE

TULSA COUNTY MEDICAL SOCIETY

John C. Perry, M.D., *President*E. O. Johnson, M.D., *President-Elect*Ian MacKenzie, M.D., *Vice-President*John E. McDonald, M.D., *Secretary-Treasurer*Jack Spears, *Executive Secretary*

VOL. 12

TULSA, OKLAHOMA, AUGUST, 1946

NO. 8

OPA DEATH MAY HIKE MEDICAL FEES

General Economic Inflation Expected to Extend Eventually into Medical Fields. Increased Operating Costs Being Felt by Physicians.

With the death of the OPA at the hands of a determined Congress early last month, indications were that expected inflationary prices would eventually extend into medical fees. Members of the Tulsa County Medical Society foresaw that a runaway inflation as experienced in 1920 would have at least four major effects on medical practice.

(1) A substantial decrease in medical collections for several months, or at least until wages and income can be increased and adjusted to increased prices. With the doctor the last to be paid as usual, persons of fixed salaries will be inclined to meet higher costs of food, rent and clothing first. Such increases in cost would tend to take surplus funds usually directed to the physician until wages and income could be proportionately increased.

(2) Marked increases in the costs of office administration. Already beginning to be felt were increased costs for office supplies with stationers anticipating more increases. Wages of nurses, office assistants, and technicians can be expected to increase as general price levels and cost of living increases.

(3) Increased medical fees resulting from the general inflation. Most physicians agree that medical fees will probably be last to go up but must eventually come if the inflationary period persists over several months.

(4) Increased premiums on health and accident, hospitalization, and medical plans of prepaid insurance. Similarly, such costs would tend to be among the last to be increased. Increase of premiums would tend to result through increased costs of administration and benefits.

As The Bulletin went to press late in July, Congress was expected to adjourn sine die without agreeing on an extension of OPA powers. Definitely beset by pressure group on both sides, the Congress seemed reluctant to create any controls except possibly on residential housing. While the rest of the nation went without controls, Congressmen quickly voted local controls for the District of Columbia, thereby protecting themselves.

A survey conducted by the Tulsa County Medical Society indicates that operating costs for physicians have been steadily rising. Printing and office supplies have advanced in cost several times during and after the war. Salaries of employees in physicians' offices have also been substantially increased. The Tulsa County Medical Society has been unable to fill vacancies at lower rates of pay with stenographers with shorthand capabilities at a premium.

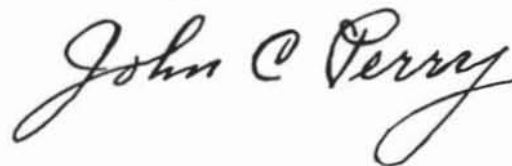
The expected inflation caused by the death of OPA had not substantially materialized during the first 30 days of free trading. Most manufacturers and merchants were attempting to hold prices to

(Continued on Page 20)

PRESIDENT'S PAGE

For the past year I have been especially interested in the fine work of the Oklahoma Division of the American Cancer Society. When the 1945 drive for funds first created ample capital for the operation of the Oklahoma units, many physicians were apprehensive that an effective expenditure of the money would not be made. There was some fear that the money might be carelessly disposed of and little tangible results shown. Today, it is apparent that such fears were needless. Rather, we have witnessed the operation of a remarkably effective program of cancer control and preventative education. The operation of the unique Mobile Cancer Clinic was alone a powerful instrument in the fight against cancer. The educational program which is comparatively just beginning, is soundly constructed and designed to educate in the most effective manner. Recently I had the opportunity of reviewing the projected program of the Oklahoma organization for 1946-47. Let me assure you that this program itself will make the State a foremost leader in the drive against the ravages of Cancer. I think the Oklahoma Division of the American Cancer Society is due a lot of commendation. It has done and is doing some much-needed work. It has had creditable and enthusiastic supervision by both lay and professional leaders, and similar credit is due also to an efficient Executive Secretary. I believe all of these men merit our heartfelt thanks for a job well done. I know they will continue to do that job in the future as in the past.

Sincerely,



President

OFFICIAL MEMBERSHIP ROSTER TULSA COUNTY MEDICAL SOCIETY

ACTIVE MEMBERS

Doctor	Address	Telephone
Adams, Richard M.,	City Health Dept., 521 N. Boulder (PH)	4-2138
Akins, Jack O.,	908 Medical Arts Bldg. (U) *	2-8233
Allen, Victor K.,	1001 Medical Arts Bldg. (Proc)	3-0858
Armstrong, O. C.,	902 Medical Arts Bldg.	4-4388
Atchley, Roger Q.,	507 Medical Arts Bldg. (S)	2-2239
Atkins, Paul N.,	1001 Medical Arts Bldg.	3-5295
Atkins, Paul N., Jr.,	210 Braniff Bldg *	3-7493
Barham, J. H.,	Daniel Bldg.	3-9456
Beyer, J. Walter,	1341 S. Boston (EENT)	3-9135
Billington, J. Jeffrey,	706 Medical Arts Bldg.	3-0251
Black, Harold J.,	416 Medical Arts Bldg.	4-9332
Blocksom, Berget H.,	Springer Clinic, 604 S. Cincinnati (U) *	7156
Boone, Wilmot B.,	2112 W. 41st *	5-0653
Bradfield, Samuel J.,	607 Medical Arts Bldg.	2-2328
Branley, Bernard L.,	210 Court Arcade Bldg. (I) *	3-2604
Brill, Francis N.,	201 Stanolind Bldg. (Orth)	7115
Brocksmith, Henry A.,	1307 S. Main (I) *	3-2038
Brodgden, James C.,	801 Medical Arts Bldg. (S)	2-2516
Brown, Walter E.,	411 Medical Arts Bldg. (R) *	4-3111
Browne, Henry S.,	615 Medical Arts Bldg. (U)	2-4515
Bryan, William J.,	801 Medical Arts Bldg. (I)	4-1011
Buchan, William,	203 Braniff Bldg. (S) *	2-0228
Calhoun, C. E.,	Sand Springs, Oklahoma	S. S. 36
Calhoun, Walter H.,	1104 Medical Arts Bldg.	4-6233
Carney, Andre B.,	Tulsa Clinic, 915 S. Cincinnati (S)	4-0177
Chalmers, J. S.,	Sand Springs, Oklahoma (Ind)	S.S. 100
Charbonnet, P. N.,	Oklahoma Bldg. (Ob-Gyn)	3-1155
Childs, Darwin B.,	2126 E. 15th	6-9026
Childs, J. W.,	501 Medical Arts Bldg.	4-6725
Cohenour, E. L.,	1101 Medical Arts Bldg. (U)	3-1076
Cook, W. Albert,	1106 Medical Arts Bldg. (EENT)	3-6008
Coulter, Thomas B.,	1011 Medical Arts Bldg.	3-9963
Craig, Paul E.,	411 Daniel Bldg. *	4-9674
Crane, Donald V.,	1116 Medical Arts Bldg. (Oph)	4-6684
Crawford, William S.,	Carter Oil Co., Nat'l Bank of Tulsa Bldg. (Ind)	2-6101
Dague, John C.,	412 National Mutual Bldg. (Orth) *	2-9273
Daily, Raymond E.,	Bixby, Oklahoma	
Davis, Arthur H.,	710 Medical Arts Bldg. (EENT)	2-3045
Davis, George M.,	Bixby, Oklahoma	
Davis, Thomas H.,	404 Medical Arts Bldg. *	2-9176
Dean, W. A.,	607 Medical Arts Bldg. (Ob)	3-3900
Denny, E. Rankin,	217 Court Arcade Bldg. (I) *	3-2664
Eads, Charles H.,	B-1 Medical Arts Bldg. (Ob) *	3-1330
Edwards, D. L.,	203 Stanolind Bldg. (EENT) *	3-5194
Eller, William C.,	1415 E. 15th (Ob-Gyn) *	4-8657
Etherton, Monte C.,	10-A South Lewis	4-6663
Evans, Hugh J.,	203 Medical Arts Bldg. (EENT)	2-4268
Ewell, William C.,	1307 S. Main (Ob) *	3-0151
Farris, H. Lee,	303 Medical Arts Bldg.	4-5538
Fite, Marcia,	804 Wright Bldg.	3-0081
Flack, F. L.,	National Bank of Tulsa Bldg. (Ind)	3-2612
Flannagan, O. A.,	912 S. Boulder	2-6625
Ford, H. W.,	Tulsa Clinic, 915 S. Cincinnati	4-0177
Forry, Willis W.,	Bixby, Oklahoma	
Franklin, Onis,	Broken Arrow, Oklahoma	

Doctor	Address	Telephone
Franklin, Samuel E.,	1619 E. 15th (S) *	3-2109
Fulcher Joseph,	1008 Medical Arts Bldg. (U)	3-4429
Funk, Robert E.,	212 Medical Arts Bldg. (I)	4-1159
Garrett D. L.,	701 Medical Arts Bldg. (S)	4-1900
Gastineau, Felix T.,	205 Medical Arts Bldg. (Oph)	4-2416
Glass, Fred A.,	404 Medical Arts Bldg. (S)	2-9176
Goddard, R. K.,	Skiatook, Oklahoma	
Goen, Rayburne W.,	100 Braniff Bldg. (C&L) *	3-7257
Goodman, Samuel,	603 Medical Arts Bldg. (I)	4-3141
Gorrell, John F.,	610 Medical Arts Bldg. (EENT)	3-5378
Graham, Hugh C.,	1307 S. Main (Ped)	5-3455
Grosshart, Paul L.,	302 Medical Arts Bldg. (S)	3-5600
Haralson, Charles H.,	310 Medical Arts Bldg. (Oph)	3-0873
Hardman, Thomas J.,	502 Medical Arts Bldg. (S) *	2-5684
Harris, Bunn, Jenks,	Oklahoma	
Hart, Mabel M.,	2529 S. Beston Pl.	3-9619
Hart, Marshall O.,	1228 S. Boulder	2-5904
Hays, Luvern,	Springer Clinic, 604 S. Cincinnati (Ped) *	7156
Henderson, F. W.,	316 Medical Arts Bldg.	2-8421
Henley, Marvin D.,	911 Medical Arts Bldg. (EENT)	2-6358
Henry, Gifford H.,	212 Court Arcade Bldg. (S) *	3-1878
Hill, O. L.,	Tulsa Clinic, 915 S. Cincinnati	4-0177
Hoke, C. C.,	Philtower Bldg. (S)	2-8372
Hoover, W. D.,	201 Stanolind Bldg. *	7115
Hotz, Carl J.,	Springer Clinic, 604 S. Cincinnati (S)	7156
Houser, Mortimer A.,	McBirney Bldg.	4-0617
Huber, Walter A.,	205 Medical Arts Bldg. (Oph)	4-2416
Hudson, David V.,	Tulsa Cooperative Clinic, 521 N. Boulder (PH)	4-6672
Hudson, Margaret G.,	1759 S. Victor	6-8958
Humphrey, B. H.,	Sperry, Oklahoma	
Hyatt, E. G.,	Springer Clinic, 604 S. Cincinnati (I)	7156
Johnson, E. O.,	209 Medical Arts Bldg. (Ob-Gyn)	4-2010
Johnson, R. R.,	Sand Springs, Oklahoma	S.S. 102
Jones, Ellis,	904 Medical Arts Bldg.	2-9228
Jones, W. M.,	Tulsa Clinic, 915 S. Cincinnati (EENT)	4-0177
Kemmerly, H. P.,	902 Medical Arts Bldg. (Anes)	4-9637
Kramer, Allen C.,	607 Medical Arts Bldg.	3-8874
Larrabee, Walter S.,	411 Medical Arts Bldg. (R)	4-3111
Layton, O. E.,	Collinsville, Oklahoma	
Lee, J. K.,	217 Court Arcade Bldg. (I) *	2-8184
LeMaster, D. W.,	902 Medical Arts Bldg.	7925
Lhevine, Morris B.,	B-7 Medical Arts Bldg. (R)	3-5294
Loney, William R. R.,	304 Medical Arts Bldg. (Ob)	4-9023
Lcwbeer, Leo,	Hillcrest Hospital, 1653 E. 12th (Path)	3-2131
Lowe, J. O.,	1217 E. 25th	2-2901
Lusk, Earl M.,	Tulsa Clinic, 915 S. Cincinnati (Ob) *	4-0177
Lynch, Thomas J.,	2132 E. 24th (S)	6-8888
McDonald, John E.,	412 National Mutual Bldg., (Orth) *	2-9273
McGill, Ralph A.,	1010 Medical Arts Bldg. (S)	4-4215
MacKenzie, Ian,	1104 Medical Arts Bldg. (Orth)	2-3412
Margolin, Berthe,	1344 E. 17th Pl. (Anes)	6-3345
Markland, James D.,	411 Medical Arts Bldg. (All)	4-3111
Matt, John G.,	1001 Medical Arts Bldg. *	2-1014
Mayginnes, P. H.,	Palace Bldg.	8425
Miller, George H.,	Atlas Life Bldg. (S)	2-6669
Miner, James L.,	810 Medical Arts Bldg. (Ob-Gyn)	2-9062
Mishler, Donald L.,	Springer Clinic, 604 S. Cincinnati (EENT)	7156
Mitchell, T. H.,	Carter Oil Co., Nat'l Bank of Tulsa Bldg. (Ind) *	2-6101
Mohrman, S. S.,	Daniel Bldg.	3-0959
Munding, L. A.,	1001 Medical Arts Bldg. *	4-0964
Murdock, H. D.,	1011 Medical Arts Bldg. (S)	3-6915
Murray, P. G.,	506 Medical Arts Bldg. (Ob)	3-2867
Murray, Silas,	501 Medical Arts Bldg. (Ob)	2-8090
Neal, James H.,	1944 N. Denver Pl. (PH)	5-2466

Doctor	Address	Telephone
Nelson, F. L.,	Atlas Life Bldg. (S)	3-7873
Nelson, Frank J.,	401 Medical Arts Bldg. (I)	4-0840
Nelson, I. A.,	1107 Medical Arts Bldg. (Path)	4-1833
Nelson, I. H.,	1107 Medical Arts Bldg. (Path)	4-1835
Nelson, Marque O.,	510 Medical Arts Bldg. (Derm)	4-3532
Nesbitt, P. P.,	917 Medical Arts Bldg.	2-8284
Northrup, Laurence C.,	1307 S. Main (Ob-Gyn)	3-6131
Orr, Herbert S.,	1307 S. Main (S) *	4-2658
Osborn, George R.,	901 Medical Arts Bldg. (Ob-Gyn)	3-1413
Pavy, Chester A.,	801 Medical Arts Bldg. (EENT)	4-3207
Park, Felix R.,	603 Medical Arts Bldg. (Card-I) *	4-3141
Peden, James C.,	612 Medical Arts Bldg.	2-9018
Perry, Daniel,	804 Atlas Life Bldg. *	3-5111
Perry, Fred,	804 Atlas Life Bldg. *	3-5111
Perry, Hugh,	804 Atlas Life Bldg.	3-5111
Perry, John C.,	808 Medical Arts Bldg.	2-7622
Pieper, Howard C.,	National Bank of Tulsa Bldg. (Ind) *	2-5151
Pigford, A. W.,	1001 Medical Arts Bldg. (S)	7307
Pigford, Charles A.,	1001 Medical Arts Bldg. *	7307
Pigford, Russell C.,	203 Court Arcade Bldg. (Card) *	3-8860
Pollack, Simon,	St. John's Hospital, 1923 S. Utica (R) *	6-2151
Porter, Horace H.,	216 Medical Arts Bldg. *	4-1272
Presson, L. C.,	1305 E. 15th	3-9311
Price, H. P.,	406 Medical Arts Bldg. (EENT)	2-7728
Ray, R. G.,	Tulsa Clinic, 915 S. Cincinnati *	4-0177
Reese, K. C.,	1102 Medical Arts Bldg. (Ped)	3-1114
Reynolds, E. W.,	Tulsa Clinic, 915 S. Cincinnati (Ob)	4-0177
Rhodes, R. E. L.,	509 Medical Arts Bldg.	3-4950
Roberts, T. R.,	Wright Bldg.	4-2833
Rogers, James W.,	406 Medical Arts Bldg. (U)	2-7735
Rubin, H. J.,	1619 E. 15th (Ped) *	3-8100
Ruprecht, Homer A.,	Springer Clinic, 604 S. Cincinnati (Card)	7156
Rushing, F. E.,	517 Medical Arts Bldg.	3-5542
Russell, G. R.,	Springer Clinic, 604 S. Cincinnati (Ped)	7156
Schreck, Phillip M.,	202 Medical Arts Bldg. (I)	4-8409
Searle, Maurice J.,	512 Medical Arts Bldg. (Ped)	4-2901
Sethney, Walter F.,	2828 E. 15th (Ped) *	9-3987
Shapiro, David,	National Mutual Bldg.	2-6801
Shepard, R. M.,	306 Medical Arts Bldg. (C&L)	4-1821
Shepard, S. C.,	807 Medical Arts Bldg. (I) *	3-7023
Sherwood, R. G.,	Court Arcade Bldg.	3-9849
Shipp, J. D.,	1001 Medical Arts Bldg. (Proc) *	4-5670
Showman, W. A.,	409 Medical Arts Bldg. (Derm)	3-7789
Simms, Uca Frances,	1137 S. Xanthus (Anes)	9-6072
Simpson, Carl F.,	502 Medical Arts Bldg. (Ob)	2-5403
Sinclair, Franklin D.,	Springer Clinic, 604 S. Cincinnati (Ob-Gyn) *	7156
Sippel, Mary Edna,	1544 E. 15th	2-8560
Sisler, Wade,	Mercy Hospital, 807 S. Elgin (Orth)	5-3123
Smith, D. O.,	Springer Clinic, 604 S. Cincinnati (I)	7156
Smith, Raymond O.,	3242 E. 11th *	6-0743
Smith, Ruric N.,	1017 Medical Arts Bldg. (EENT)	3-3208
Smith, William Orlando,	203 Stanolind Bldg. (EENT)	3-5194
Spann, Logan A.,	203 Braniff Bldg. *	2-0216
Springer, M. P.,	Springer Clinic, 604 S. Cincinnati	7156
Stallings, T. W.,	724 S. Elgin (EENT)	2-2641
Stanley, M. V.,	307 Medical Arts Bldg.	4-0531
Steel, Marcella R.,	Springer Clinic, 604 S. Cincinnati (Anes)	7156
Stevenson, James,	615 Medical Arts Bldg. (Derm)	5-2562
Stewart, H. B.,	St. John's Hospital, 1923 S. Utica (Anes)	6-8851
Stokes, E. Malcolm,	1415 E. 15th (Ob-Gyn)	4-8557
Stokes, Lowell L.,	517 Medical Arts Bldg. *	3-5542
Stuard, Charles G.,	Court Arcade Bldg. (Oph) *	3-0873
Stuart, Frank A.,	412 National Mutual Bldg. (Orth) *	2-9273
Stuart, Leon H.,	1107 Medical Arts Bldg. (R)	5-2348

Doctor	Address	Telephone
Summers, C. S.,	Daniel Bldg.	3-9011
Swanson, Karl F.,	1008 Medical Arts Bldg. (U) *	3-4429
Trainor, W. J.,	1011 Medical Arts Bldg. (I)	7545
Turnbow, William R.,	2112 W. 41st *	5-0653
Turner, Thomas R.,	Springer Clinic, 604 S. Cincinnati (P)	7156
Underwood, David J.,	815 Medical Arts Bldg. (Ped)	3-7475
Underwood, F. L.,	1001 Medical Arts Bldg.	3-5514
Ungerman, Arnold H.,	708 Medical Arts Bldg. (P)	3-9755
Venable, Sidney C.,	Tulsa County Clinic, 212 W. 6th (R)	3-2427
Walker, William A.,	Kennedy Bldg.	4-5257
Wallace, Albert W.,	Springer Clinic, 604 S. Cincinnati (I) *	7156
Wallace, J. E.,	914 Medical Arts Bldg.	2-6501
Ward, Benjamin W.,	804 Wright Bldg. (S) *	3-0081
White, Eric M.,	312 Medical Arts Bldg. *	3-1181
White, N. Stuart,	312 Medical Arts Bldg.	3-1181
Wiley, A. Ray,	812 Medical Arts Bldg. (S)	3-0202
Williams, Theodore S.,	210 Medical Arts Bldg.	3-8443
Witcher, Robert B.,	909 Medical Arts Bldg.	2-4673
Wolff, Eugene G.,	St. John's Hospital, 1923 S. Utica (Anes) *	6-8851
Woodson, Fred E.,	908 Medical Arts Bldg. (Anes)	2-8233
Yagol, H. Benjamin,	B-7 Medical Arts Bldg. (R)	3-5294
Yandell, Hays R.,	404 Medical Arts Bldg. (S) *	2-9176
Zink, Roy A.,	Daniel Bldg.	7653

APPLICATIONS PENDING

Bivens, William,	507 Medical Arts Bldg. *	2-2239
Carter, H. Gray,	Tulsa Clinic, 915 S. Cincinnati *	4-0177
Dcdd, Nevin W.,	1453 S. Quaker *	4-6853
Gorrell, Ben F.,	610 Medical Arts Bldg.	3-5378
Lindstrom, W. Carl,	1619 E. 15th (Ob-Gyn) *	3-2109
Newlin, W. H.,	Broken Arrow, Oklahoma	
Shackelford, Paul O.,	Tulsa Clinic, 915 S. Cincinnati *	4-0177

MEMBERS IN MILITARY SERVICE

Green, Harry, Major,	M. C., Fort Sam Houston, Texas	
----------------------	--------------------------------	--

HONORARY MEMBERS

Brookshire, J. E.,	Ritz Building	3-5094
Brown, Paul R.,	1614 E. 35th	3-9903
Clinton, Fred S.,	230 E. Woodward Blvd.	3-0014
Hall, G. H.,	Palace Bldg.	3-8316
Hcooper, Joel S.,	U. S. Veterans Facility, Muskogee, Okla.	
Nesbitt, E. P.,	240 Orchard Street, East Lansing, Michigan	
Reynolds, J. L.,	Orpheum Bldg.	3-5659
Wall, Gregory A.,	1202 N. Main	2-3710

KEY TO SYMBOLS

For purposes of information physicians who practice a major specialty are so indicated in the foregoing roster. The symbol following the name indicates the specialty practiced. However, this listing does not necessarily mean that the physician named limits himself strictly to that specialty.

* Veteran of World War II	Gyn—Gynecology	PH—Public Health
All—Allergy	I—Internal Medicine	Path—Pathology
Anes—Anesthesia	Ind—Industrial Medicine	Ped—Pediatrics
C & L—Chest and Lungs	Ob—Obstetrics	Proc—Proctology
Card—Cardiac	Oph—Ophthalmology	R—Radiology
Derm—Dermatology	Orth—Orthopedics	S—Surgery
EENT—Eye, Ear, Nose and Throat	P—Psychiatry	U—Urology

TULSA MEDICAL DIRECTORY

TULSA COUNTY MEDICAL SOCIETY

Executive Offices: 1202 Medical Arts Building, Tulsa. Telephone 4-8161. Hours, 8:30-5:00 daily except Saturday, 8:30-1:00. Mr. Jack Spears, Executive Secretary. Society Officers: Dr. John C. Perry, president; Dr. E. O. Johnson, president-elect; Dr. Ian MacKenzie, vice-president; Dr. John E. McDonald, secretary-treasurer. Trustees: Dr. W. A. Showman, Dr. Frank J. Nelson, Dr. H. B. Stewart, Dr. Ralph A. McGill, and Dr. H. A. Ruprecht. Board of Censors: Dr. Ian MacKenzie, chairman, Dr. V. K. Allen, and Dr. Marvin D. Henley.

Medical Library: 1203 Medical Arts Building, Tulsa. Telephone 4-1461. Hours, 9:00-5:00 daily except Saturday, 9:00-1:00. Mrs. Veneta R. Osborn, Librarian. Chairman of Library Committee, Dr. Fred E. Woodson.

Medical Credit Bureau: 1201 Medical Arts Building, Tulsa. Telephone 4-8161. Hours, 8:30-5:00 daily except Saturday, 8:30-1:00. Mr. Jack Spears, Manager. Mrs. Florence Moore and Mrs. Ruth Kirkpatrick, clerks. Chairman of Medical Credit Bureau Committee, Dr. John F. Gorrell.

OKLAHOMA STATE MEDICAL ASSOCIATION

Executive Offices: 210 Plaza Court, Oklahoma City, Okla. Telephone 7-0976. Mr. R. H. Graham, Executive Secretary. Dr. L. C. Kurykendall, McAlester, president.

The Journal: 210 Plaza Court, Oklahoma City, Okla. Telephone 7-0976. Dr. L. J. Moorman, editor. Mrs. Jane F. Tucker, editorial assistant.

Postgraduate Study Committee: 212 Plaza Court, Oklahoma City, Okla. Telephone 7-0976. Dr. G. E. Stanbro, Chairman. Mr. R. H. Graham, Administrator. Mrs. Orene Ramsey, Secretary.

OKLAHOMA COUNTY MEDICAL SOCIETY

Executive Offices: 512 Medical Arts Building, Oklahoma City. Telephone 3-7143. Mrs. Muriel R. Waller, Executive Secretary.

AMERICAN MEDICAL ASSOCIATION

General Offices: 535 North Dearborn Avenue, Chicago, Ill. Address all communications to this address. Washington, D. C., office: 900 Columbia Medical Building, 1835 I Street, N. W., Washington 6, D. C.

TULSA HOSPITALS

Byrne Memorial Hospital. 1321 South Peoria, Tulsa. Telephone 2-4114. Owner, Mrs. Bessie Byrne.

Flower Hospital. 523 N. Boulder, Tulsa. Telephone 2-2208. Supervisor, Mrs. K. K. Eason.

Hillcrest Lying-In Hospital. 1615 E. 12th. Telephone 2-8134. Mr. Bryce Twitty, Administrator.

Hillcrest Memorial Hospital. 1653 E. 12th. Telephone 3-2131. Mr. Bryce Twitty, Administrator. Dr. W. A. Dean, Chief of Staff.

Mercy Hospital. 807 S. Elgin. Telephone 5-3123. Dr. Wade Sisler, Owner.

Moton Memorial Hospital. 603 East Pine. Telephone 4-8430. Dr. William Perry, Administrator. For negroes.

St. John's Hospital. 1923 S. Utica. Telephone 6-2161. Sister M. Olga, Administrator. Dr. H. B. Stewart, Chief of Staff.

CLINICS

Medical & Surgical Clinic. 1307 S. Main. Telephone 3-0151. Dr. L. C. Northrup, Director.

Springer Clinic. 604 S. Cincinnati. Telephone 7156. Mr. Arthur Johnson, Business Manager.

Tulsa Clinic. 915 S. Cincinnati. Telephone 4-0177. Mr. A. D. Mason, Business Manager. Miss Bettye Adams, Director.

Tulsa Cooperative Clinic. 521 N. Boulder. Telephone 4-6672. Dr. David V. Hudson, Medical Director. For treatment of venereal diseases.

Tulsa County Clinic. 212 W. 6th Street. Telephone 3-2427. Dr. J. Jeffrey Billington, County Physician. For treatment of indigent patients.

INTERN AND RESIDENT PERSONNEL

Hillcrest Memorial Hospital: Dr. Charles E. Bancroft, Dr. John D. Capehart, Dr. Willard E. House, Dr. Robert E. McKnight, Dr. Ruth Lynn Nicholson, Dr. Carl Davis Osborn, Dr. Muriel Silverman, and Dr. Roy L. Smith.

St. John's Hospital: Dr. H. K. Weiman, Dr. Frank E. Flack, Dr. W. J. O'Melia, Dr. Byron Bailey, Dr. John Kennedy, and Dr. Phillip Kouri.

LABORATORIES

Medical Arts Laboratories. 411 Medical Arts Building, Tulsa. Telephone 4-3111.

Nelson Pathological Laboratories. 1107 Medical Arts Building, Tulsa. Telephone 4-1835.

Knoblock Laboratories. 512 Medical Arts Building, Tulsa. Telephone 2-6040.

Stuart X-Ray Laboratories. 1107 Medical Arts Building, Tulsa. Telephone 5-2348.

Tulsa X-Ray and Pathological Laboratories. B-7 Medical Arts Building, Tulsa. Telephone 3-5294.

City Health Department. 521 N. Boulder. Telephone 4-2138. Dr. Richard M. Adams, City Superintendent of Health.

County Health Department. 120 E. 9th. Telephone 3-6648. Dr. D. W. LeMaster, County Superintendent of Health.

Group Hospital Service. 915 S. Boston, Tulsa. Telephone 2-6264. Mr. N. D. Helland, Executive Director. (Blue Cross Plan). Mr. Ralph Bethel, General Manager.

Oklahoma Physicians Service. 915 S. Boston, Tulsa. Telephone 2-6264. Mr. N. D. Helland, Executive Director.

Tulsa Chamber of Commerce. Tulsa Building. Telephone 5-1201. Public Health Committee, Mr. Preston V. Kors, secretary. Medical Conventions, Mr. John H. Barhydt, secretary.

Better Business Bureau. Tulsa Building. Telephone 3-1194. Mr. E. W. Wigg, manager.

Tulsa Council of Social Agencies. 603 S. Cheyenne. Telephone 3-7171. Mr. Friendly Ford, Executive Secretary.

Physicians & Surgeons Exchange. 510 S. Elwood. Telephone 7212.

Medical & Dental Arts Building. 6th & Boulder streets. Building management, telephone 4-4709. Mr. J. E. Buckley, manager.

Tulsa County Public Health Association. 807 South Peoria. Telephone 5-3233. Miss Goldie Davis, Director.

Junior League Convalescent Home for Crippled Children. 4900 S. Lewis Road. Telephone 6-9633.

Bureau of Vital Statistics. 521 North Boulder. Telephone 4-2138.

Medical License Registrar. Andy Stokes, County Clerk. County Courthouse, 6th and Boulder streets. Telephone 3-2321.

State Board of Medical Examiners. Frederick, Oklahoma. Dr. James D. Osborn, Secretary-Treasurer. Address all communications concerning medical licensure to this office.

Oklahoma State Health Department. 3400 North Eastern, Oklahoma City, Okla. Dr. Grady Mathews, Commissioner.

Oklahoma Division, American Cancer Society. Braniff Building, Oklahoma City, Oklahoma. Mr. Hugh Payne, Executive Secretary.

Send Your Delinquent Accounts Now
To Tulsa's Finest Collection Service

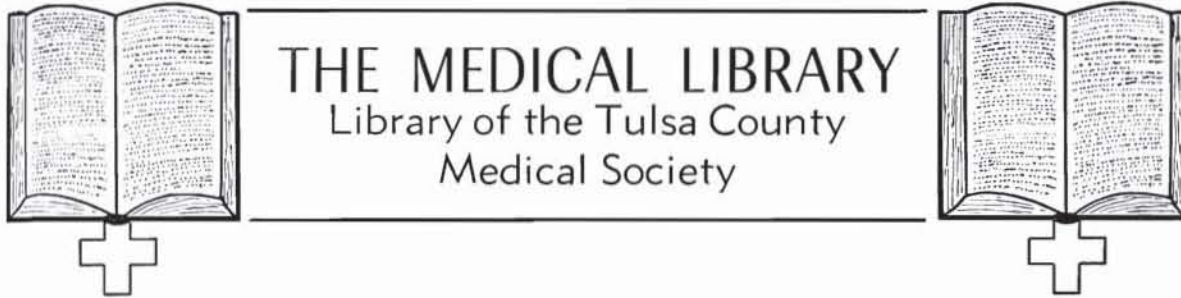
MEDICAL CREDIT BUREAU

Official Collection Agency of The Tulsa County Medical Society

1202 Medical Arts Building

Tulsa, Oklahoma

Telephone 4-8161

**Library Committee:**

Morris B. Lhevine, M. D.

Hugh Perry, M. D.

Logan A. Spann, M. D.

J. W. Childs, M. D.

Fred E. Woodson, M. D., Chairman.

Veneta R. Osborn, Librarian

RECENT ACCESSIONS**GIFTS OF THE MONTH—**

Dr. H. D. Murdock. Abstracts of Lectures in Surgical Diagnosis, Oklahoma State Medical Association, 1944-1945.

Dr. J. E. Wallace. Current issues of the Quarterly Review of Obstetrics and Gynecology.

Dr. H. B. Yagol. Quarterly Bulletin of Sea View Hospital, volumes one to six.

Dr. Gifford H. Henry, Industrial Medicine, volumes 14 and 15.

RESPONSE TO BOOK DRIVE

In response to the request of the Library Committee for one hundred new volumes for the library, the following members of the profession and one hospital have purchased one and in most instances two volumes. Many have indicated their desire to participate in this expansion program but their cards have not yet come in. Additions to the list will be published as they are received.

Dr. Henry S. Browne

Dr. H. Lee Farris

Dr. Fred E. Woodson

Dr. Bunn Harris (Jenks)

Dr. D. W. LeMaster

Dr. Benjamin W. Ward

Dr. George Miller mailed his check for one hundred dollars to be used for books or periodicals.

Dr. C. C. Hoke

Dr. Geo. R. Osborn

Dr. V. K. Allen

Dr. I. A. Nelson

Dr. F. L. Underwood

Dr. Paul E. Craig

Dr. W. A. Showman

Dr. Frank J. Nelson

Dr. Hugh J. Evans

Hillcrest Memorial Hospital

DR. I. A. NELSON PRESENTS EXTENSIVE LIBRARY

The outstanding gift of the year has been made to the library by Dr. I. A. Nelson, who last month presented his entire library, which will possibly total between three and four hundred volumes. The library is divided into two parts, anatomical for the physicians and clinical for the use of technologists. In addition to these valuable texts are the periodicals, Journal of Biological Chemistry volumes 83, 1929 to date and the American Journal of Clinical Pathology, volume one, 1931 to date, which Dr. Nelson will have bound, as an additional gift to the library.

USE YOUR LIBRARY

The BULLETIN

E. O. JOHNSON, M.D.

Editorial Supervisor

CHARLES A. PIGFORD, M.D.

I. H. NELSON, M.D.

*Associate Editor*JACK SPEARS, *Managing Editor*

Published monthly on the 3rd day of each month at the executive offices of the Tulsa County Medical Society, 1202 Medical Arts Building, Tulsa, Oklahoma.

Vol. 12 AUGUST, 1946 No. 8

YOUR 1947 PROGRAMS

At the September 23rd meeting of the Tulsa County Medical Society, the members will be asked to indicate their respective desires concerning the Society's program of scientific medical study for 1947. During the current year the Society has followed a policy of bringing some of Medicine's best known figures to Tulsa as guest speakers and lecturers. During the earlier war years, when transportation difficulties prevailed, the outside speaker was replaced by a Tulsa physician who presented a scientific paper based on his own studies and research. The question may now be asked of members—what type of speaker do you want? Shall it be a nationally known medical leader? Or shall the Society serve as a medium for presenting the studies of its own members? Or perhaps, would a combination of the two be the most effective solution? The 1947 program will be formulated on the basis of the answers received from members at this first Fall meeting.

The series of scientific programs being currently presented by the Society are extremely remarkable. Each program features a fine physician as speaker—such names as Ochsner, Graham, Eversole, etc.—and an attempt has made to

cover the major medical specialties. This program has attracted national commendation and represents a major accomplishment of the current administration of the Society.

Some members, however, believe that the Society's own personnel should be given an opportunity to present their own case studies and medical researches. That is undoubtedly true. However, several facts must be taken into consideration. First, Tulsa physicians are required to furnish case studies and papers for two hospital staff meetings each month. They are required also to contribute a proportionate share of the papers presented at the annual convention of the Oklahoma State Medical Association. This constitutes a considerable duty in itself. Should the members determine to include local papers, they must in turn agree to the preparation of these papers. With the Society maintaining a fine medical library, and the hospitals and our Tulsa County Clinic providing clinical material, scores of excellent papers should be forthcoming. These writings are necessary if Tulsa is to project itself as a medical center.

Perhaps an ideal solution is a combination of the two, the possible increasing of the number of meetings, and perhaps one or two meetings which should be open to the public. The answer must be determined by the membership. These columns do not purport to influence this decision. It does, however, call attention to two salient facts: (1) a highly successful program of out-of-town medical leaders has been most noteworthy, and (2) a definite need exists for increased expression of the local profession's own studies.

What is your pleasure, gentlemen?

FOR RENT

Attractive suite of offices, newly remodeled and redeccorated, in modern building housing doctor's offices. Ideal for physicians. Possession now. Bob Ward, 1341 S. Boston, Tulsa.



DEPENDABLE AS THE MORNING MAIL!

The Physician can depend on

Desoxycholic Acid — to increase lipase activity, decrease surface tension, increase fat absorption.

Ketocholanic Acids — to increase the volume and flow of thin bile, flushing the bile passages with their natural solvent.

The **DOXYCHOL-K** formula:

Desoxycholic Acid . (1 gr.) 65 mg.
Ketocholanic Acids . (3 gr.) 200 mg.

UNIFORMITY **DEPENDABILITY** EFFECTIVENESS

Available in bottles of 100, 500, 1000



MADE FOR MEN BY SKILLED MEN

George A. Breon & Company
Pharmaceutical Chemists  KANSAS CITY 10, MISSOURI
NEW YORK • ATLANTA LOS ANGELES • SEATTLE

GOOD WILL

is the one and only asset
that competition cannot
undersell or destroy

CURTAINS PRESCRIPTION LABORATORY

SIXTH AND BOULDER

PHONE 4-7116

A Strict Ethical Pharmacy in Policy and Appearance

Medical Calendar

THURSDAY, August 1st:

Office Assistants Group, Blue Cross Hospitalization Insurance Plan, due and payable at 1202 Medical Arts Building, Tulsa, on this date. Members are reminded that rates have been increased. Final date for payment, August 10.

FRIDAY, August 2nd:

Board of Trustees Meeting, Tulsa County Medical Society, Mezzanine of Medical Arts Coffee Shop, 1:00 p.m.

MONDAY, August 5th:

Hillcrest Hospital Staff Meeting.

TUESDAY, August 6th:

Medical Broadcast, "Poliomyelitis," Radio Station KOME, 3:30 p.m. Speaker to be announced.

SATURDAY, August 10th:

Final date upon which to pay the special assessment of \$25.00 levied against each member of the Oklahoma State Medical Association. Final date for Office Assistants Group, Blue Cross Plan, to pay quarterly premiums.

MONDAY, August 12th:

Members of the Tulsa County Medical Society are reminded that scientific meetings have been postponed for the summer months. Next meeting will be Monday, September 23, 1946.

TUESDAY, August 13th:

Medical Broadcast, "Dental Health," Radio Station KOME, 3:30 p.m. Speaker to be announced.

SATURDAY, August 17th:

Copy deadline for the September issue of The Bulletin.

MONDAY, August 19th:

St. John's Hospital Staff Meeting.

TUESDAY, August 20th:

Medical Broadcast, "Hot Weather Diets," Radio Station KOME, 3:30 p.m. Speaker to be announced.

FRIDAY, August 23rd:

Board of Trustees Meeting, Tulsa County Medical Society, 1202 Medical Arts Building, Tulsa, 1:00 p.m. Place of meeting subject to change.

TUESDAY, August 27:

Medical Broadcast, "Food Fallacies," Radio Station KOME, 3:30 p.m. Speaker to be announced.

SATURDAY, August 31st:

Final date to pay second installment on 1946 annual membership dues to the Tulsa County Medical Society. Members not paid in full for the year on this date are automatically suspended from membership privileges.

Buy Bonds Then Flowers From

Flowerland

Fine Flowers

Tulsa's Newest Downtown Flower Shop

We Send

FLOWERS BY WIRE ● FLOWERS BY AIR

21 East Fourth

Phone 4-4355



JOHN L. STANLEY, Mgr.

BETTER HEARING

Made possible by

BELL TELEPHONE RESEARCH

with the New

Electronic Model

Western Electric

AUDIPHONE HEARING AID



415 South Boston

Phone 4-8788

Res. 7524

Accepted by A. M. A. Council of Physical Therapy

PERSONALS

Its a boy, Stephen Donald, born June 30, for DR. and MRS. DONALD CRANE. Congratulations.

New applicants for membership in the Tulsa County Medical Society include DR. PAUL O. SHACKELFORD, general practice, 915 South Cincinnati, and DR. W. CARL LINDSTROM, obstetrics and gynecology, 1619 East 15th Street.

DR. J. W. CHILDS has returned from a vacation in the Northwest.

DR. WALTER BEYER has opened attractive new offices 1341 South Boston, Tulsa, for the practice of Ophthalmology and Otolaryngology.

W. W. BEESLEY, M. D.

1879 - 1946

Dr. Walker Worth Beesley, 66, widely known Tulsa physician, died Saturday, June 29, following an illness of three weeks. An honorary member of the Tulsa County Medical Society, he had been in poor health for several years. Death was attributed to a cardiac ailment.

Born in Paris, Texas, in 1879, Dr. Beesley attended the University of Texas at Galveston for his pre-medical studies. Later, he attended Barnes Medical College of St. Louis, from which he graduated in 1907 with the degree of Doctor of Medicine. He practiced in several states before coming to Tulsa in 1915 where he became quickly recognized in his profession. Dr. Beesley served as County Physician in 1916 and again in 1938-39. In 1940 he had served as County Physician for the Sand Springs area. His final illness had limited his practice for several years to his offices at 1733 S. Lewis Street, Tulsa.

Services were held at the Fitzgerald Chapel July 1. Survivors include the widow, three sons and one daughter.

DR. DAVID V. HUDSON has returned to his duties as director of the Tulsa Cooperative Clinic after several months of postgraduate study at Johns-Hopkins University in Baltimore. He expects to return there again this Fall.

DR. RALPH A. MCGILL, who has been ill for several weeks at Hillcrest Hospital, is reported much improved.

SPECIAL ASSESSMENT

Members of the Oklahoma State Medical Association are reminded that the special assessment of \$25.00 each levied by the House of Delegates at the annual meeting last May is now due and payable. Tulsa doctors should send their checks to the Tulsa County Medical Society, 1202 Medical Arts Building, Tulsa, not later than August 10, 1946. Make check payable to "Tulsa County Medical

OPA DEATH

(Continued from Page 7)

OPA levels, but costs in food marketing were soaring. Meats and grains skyrocketed. The Medical Credit Bureau, official collection agency of the Tulsa County Medical Society, reported that collections in July were normal and tending to be strong. Most physicians, however, were experiencing collections off as much as one-third as previous months this year.

Increased fees for medical service is expected to be entirely dependent upon general economic conditions, and present fee schedules will prevail for several months at least. Most physicians are reluctant to increase fees and indicated that every effort would be made to keep medical costs at their present levels.

FOR RENT TO MEDICAL DOCTOR

Private office, two examination rooms in new air-conditioned attractive building in Tulsa suburban center. Can arrange more space if necessary. Building is shared with three reputable dentists. If interested call Dr. Richard Oliver, 3505 South Peoria. Telephone 4-7656.

CATRON PHARMACY

Northwest Corner
11TH AND HARVARD

*Reliable
Prescription
Service*

TELEPHONE 6-2101

FRESH — CLEAN — COMPLETE

PRESCRIPTION STOCK

Free Prescription Delivery

CWYN E. CATRON, Owner

Special Service

For the expectant mother
and the Baby . . .
Every Material Need . . .

**Scales for Rent
Feeding Supplies
Paley's Foods**

Babyland

14 E 6th St.

Ph. 3-7149

Tulsa

ST. JOHN'S HOSPITAL

*A Leading
Institution*

In

*Oklahoma
Medicine*

1923 SOUTH UTICA
TULSA, OKLAHOMA

TELEPHONE

1912-9

A

*Complete
Prescription
Service*

Covering Tulsa's East Side
With Motor Delivery

Telephone 6-2156

BALL DRUG STORE

College at Admiral

DICK KELLO, Owner

Distinctive Prescription Service for the Eye Physician

COURTRIGHT, Optician

IN THE
COURT ARCADE

Tulsa, Oklahoma

Telephone 4-1613

HILLCREST MEMORIAL HOSPITAL

*One of Oklahoma's
finer hospitals*

1653 East Twelfth St.

Telephone 3-2131

TULSA, OKLAHOMA

HARVARD DRUG STORE

B. C. SHINN, Owner

PHONE 6-2186

*The
Suburban
Prescription
Store*

FREE
PRESCRIPTION
DELIVERY

3244 E. 11th St.

Tulsa

THE COYNE CAMPBELL SANITARIUM

For Nervous And Mental Disorders

131 N. E. 4TH STREET

OKLAHOMA CITY 4, OKLA.

TELEPHONE 3-0433

ALWAYS
UNIFORM
DEPENDABLE
SUPERIOR



HOMOGENIZED

(SOFT-CURD)

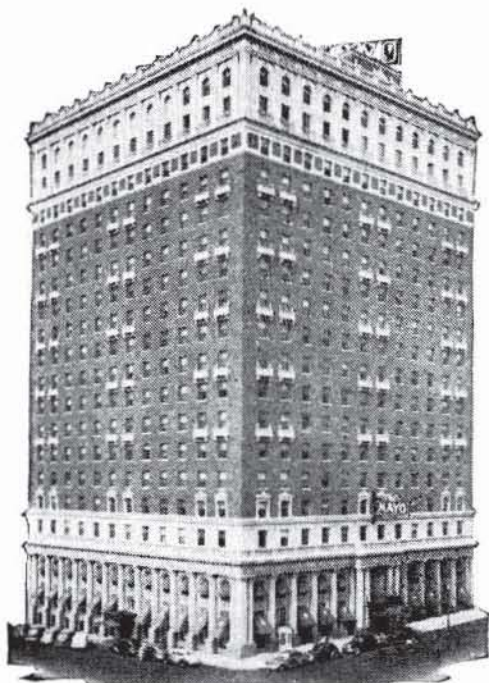
VITAMIN D

(400 U. S. P. Units Per Quart)

MEADOW GOLD MILK

BEATRICE CREAMERY COMPANY

Telephone 4-2471



Quiet, Restful Rooms,
All with Bath, are

OK

For Your Out-of-Town
PATIENTS

•
Hold Your Convention
and Meetings at

The MAYO

Tulsa, Okla.

Dr. L. H. Stuart,
1107 Medical Arts Bldg.
Tulsa, Okla.

SEC. 562, P. L. & R.

U. S. POSTAGE

PAID

TULSA 3, OKLA.

PERMIT No. 13

(Return Postage Guaranteed)

DOCTORS

We have a Cadillac Air-Conditioned Ambulance at your disposal
Day or Night.

WINTERRINGER FUNERAL HOME, INC.

2211 East Sixth

Phone 4-2105

MERKEL X-RAY CO.

Exclusive Distributors For—

Westinghouse X-Ray Equipment

Burdick and High Tension
Physical Therapy Equipment



Complete Stock
X-Ray and Physical Therapy
Supplies



TULSA

1114 S. Boulder Tel. 2-4897

OKLAHOMA CITY

901 N. 12th Tel. 2-3522

WM. T. STOVER CO.

Hospital and Physicians
Equipment and Supplies
Keleket X-Ray Equipment

*The Complete
Surgical Supply Store*

We carry a complete stock of instruments, rubber goods, surgical dressings, sutures, laboratory stains or reagents, enamel-ware, examining room furniture, wheel chairs, supports and trusses.

Call Or Write Us
For Prompt Delivery
PHONE 2-8169 TULSA
610 SOUTH MAIN

Commercial Printing Company PRINTERS

We Print the Bulletin

OFFICE AND PLANT AT 417 EAST 3RD STREET

R. W. (Bob) HUDSON

Publications, Programs
Advertising Literature,
Office and Factory Forms
Fine Personal Stationery

TELEPHONE 2-2450