

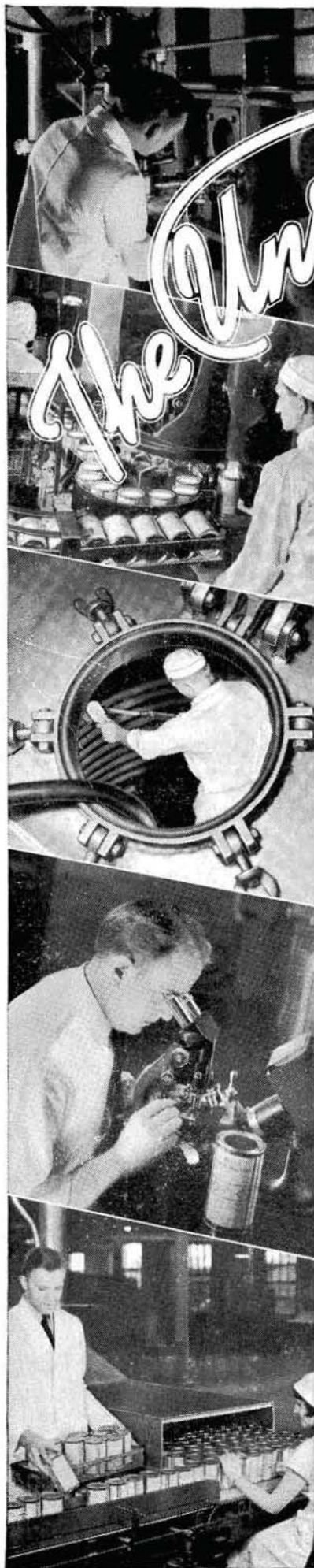
THE BULLETIN

OF THE TULSA COUNTY MEDICAL SOCIETY



48th Annual
State
Medical
Meet
Headquarters
at the
Mayo Hotel

Vol. 6 ♦ Tulsa ♦ MAY ♦ Okla. ♦ No. 5



Unseen Quality of

DEXTRI-MALTOSE

DEXTRI-MALTOSE is no ordinary carbohydrate. Step by step, its manufacture is surrounded with every care and precaution, evolved through long years of experience and research. Unseen by physician and patient are numerous safety factors, the practical effect of which nevertheless is present in every package of Dextri-Maltose. To name a few of these:

1. Dextri-Maltose is sampled for bacteriological testing before drying.
2. Steam at 20 pounds pressure sterilizes Dextri-Maltose filter presses which remove proteins, fat, and indigestible residue.
3. Blood agar tests are made to insure absence of hemolytic cocci.
4. Dextri-Maltose containers are paper-wrapped to prevent the cans from accumulating dust.
5. Bacteriological tests are made in a steam-washed plating room, the air of which is filtered.
6. Dextri-Maltose containers are automatically filled and closed without human handling of the product.
7. The direct microscopic test which Dextri-Maltose receives is but one kind of 6 microbiological tests which it must routinely meet.
8. The interiors of the large converters in which Dextri-Maltose is processed are thoroughly scrubbed prior to steam sterilization.
9. Steaming under 20 pounds pressure sterilizes the converters for processing Dextri-Maltose.
10. After being packaged, Dextri-Maltose is held in storage and released only after final approval from the bacteriological checking laboratory.
11. Portable equipment used in manufacturing Dextri-Maltose is sterilized in autoclaves at 20 pounds live steam pressure for 20 minutes.
12. Dextri-Maltose is tested routinely to check the keeping quality of prepared feedings held in refrigeration for 24 hours.

It is, therefore, no mere coincidence that Dextri-Maltose enjoys greater pediatric acceptance today than ever before. By constant research and everlasting watchfulness, we try to keep pace with pediatric progress, and we put forth every human effort to merit the continued respect and confidence of the medical profession.

The True Measure of Economy Is Value

MEAD JOHNSON & CO., Evansville, Ind., U.S.A.

Only PASTEURIZED Milk
is SAFE Milk!

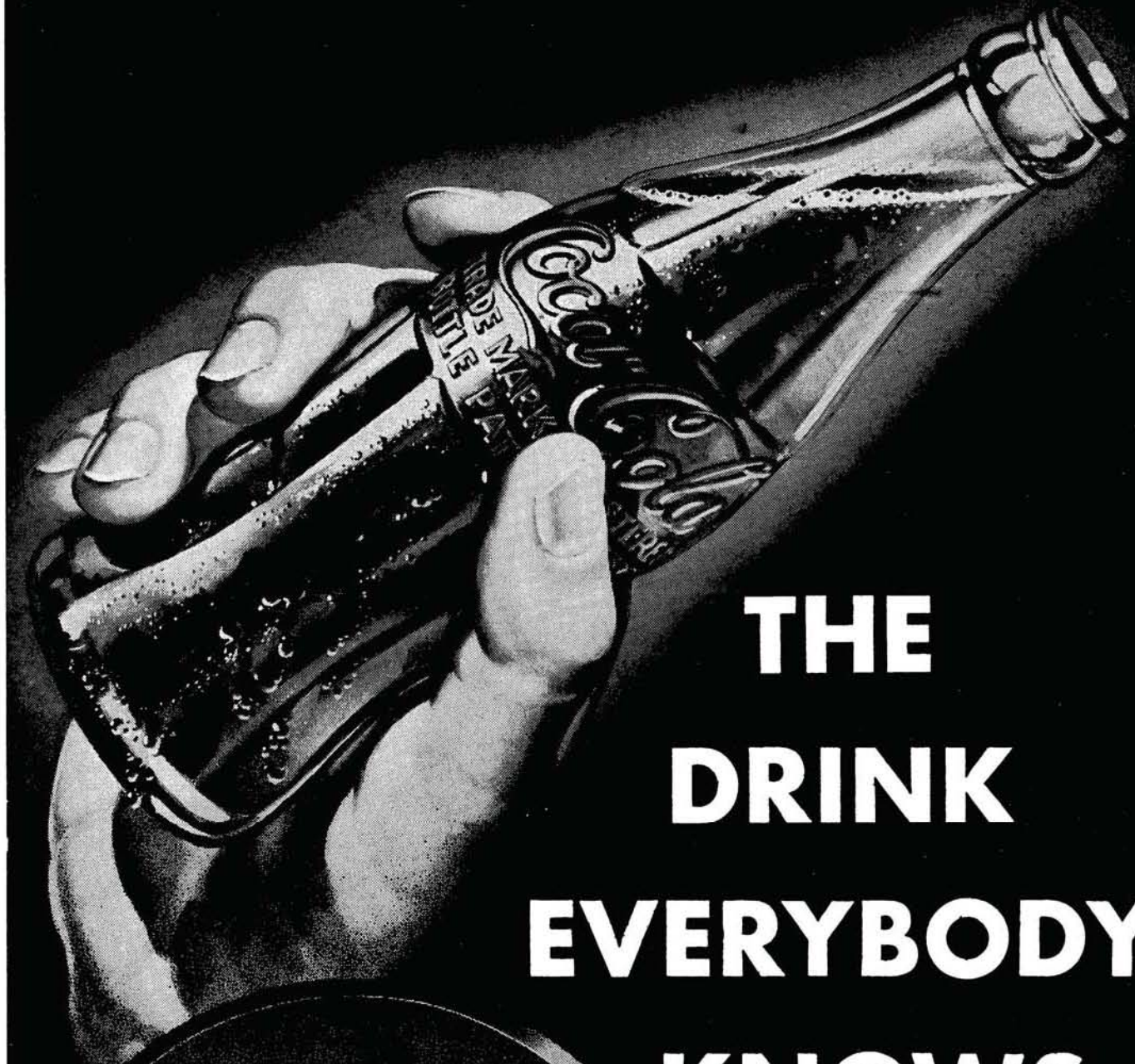
In the light of present knowledge, it is conclusively evident that the public is protected against milk-borne pathogenic organisms wreaking havoc with health and costing lives when pasteurized milk is used. Rigidly-controlled nutritional studies demonstrate that pasteurized milk is more readily digested and absorbed, and better growth results! After pasteurization the curd is softened and the protein is more readily digested yet there is no diminution of the nutritional qualities of the milk!



**MEADOW GOLD
GLENCLIFF DAIRY**

**HAWK'S DAIRY
PURE WHITE DAIRY**

QUALITY MILK CO.



**THE
DRINK
EVERYBODY
KNOWS**

Drink

Coca-Cola

Delicious and
Refreshing



Doctor:

This is a Clapp "Starter Mocc," roomy—extreme flexibility. "Barefoot freedom with shoe protection." Send your patients where fitting is an art.

BABYLAND

14 East 6th St. Tulsa

LITERATURE AND SAMPLES SENT TO ANY INTERESTED PHYSICIAN

DOCTOR...

Unless you have seen the Houston's Fire & Casualty Company's Malpractice Policy written as group insurance for Oklahoma doctors, you are neglecting your own interests.

Address All Inquiries to:



219 Philcade Building
TULSA, OKLAHOMA

CONTENTS

| | |
|------------------------------|----|
| Advertisers | 5 |
| Tulsa Invites You | 7 |
| Convention Program | 8 |
| Hall of Health | 9 |
| President's Page | 10 |
| Medical Calendar | 11 |
| Editorial | 12 |
| Clinic Report | 15 |
| Convention Committees | 17 |
| Tulsa's Guests at O. C. | 19 |

ADVERTISERS

| | |
|---|----|
| Adams Drug | 18 |
| Audiphone Hearing Aids | 17 |
| Babyland | 5 |
| Ball Drug Store | 18 |
| Coca-Cola | 4 |
| Commercial Printing Company | 24 |
| Curtain's Prescription Laboratory | 6 |
| Denver Chemical Co. | 18 |
| Mayo Hotel | 6 |
| Mead Johnson & Co. | 2 |
| Meadow Gold Dairy | 23 |
| Medical Arts Bldg. | 14 |
| Medical Arts Prescription Shop | 16 |
| Medical Credit Bureau | 20 |
| Merkel X-Ray | 24 |
| Morningside Hospital | 16 |
| Nurses Registry | 5 |
| Oaklawn Sanitarium | 23 |
| Pasteurized Milk | 3 |
| Philtower Flower Shop | 24 |
| Professional Directory | 22 |
| Physicians Life and Casualty Insurance Co. | 13 |
| Schiek & Liddle | 18 |
| Paul Sisk & Associates | 20 |
| Sturdivant's | 18 |
| Tulsa General Hospital | 20 |
| Tulsa Typewriter Co. | 24 |

JUST WHAT THE DOCTOR ORDERED



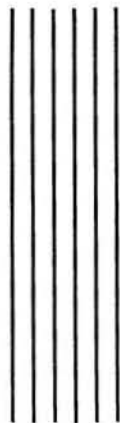
Excellent Service

Pleasant Atmosphere

"Air Conditioned" Comfort

THE MAYO
IN TULSA

FOR YOUR PROTECTION



- Quality ingredients
- Precision compounding
- A high standard of ethics

CURTAINS PRESCRIPTION LABORATORY

SIXTH AND BOULDER

PHONE 4-7116

A Strict Ethical Pharmacy in Policy and Appearance

THE BULLETIN

OF THE

TULSA COUNTY MEDICAL SOCIETY

R. C. Pigford, M.D., *President*J. C. Brogden, M.D., *President Elect*Ralph McGill, M.D., *Vice-President*Roy L. Smith, M. D., *Secretary-Treasurer*LLOYD STONE, *Executive Secretary*

VOL. 6

TULSA, OKLAHOMA, MAY, 1940

No. 5

Tulsa Invites You - May 6-7-8

Final touches placed upon arrangements for 48th annual state medical meeting; all plans made to make this meeting the most outstanding ever held by the medical profession.

By MAURICE J. SEARLE, M.D.

Chairman General Convention Committee

Plans have been completed for what we hope will be one of the finest annual meetings in the history of the Oklahoma State Medical Association here in Tulsa, May 6-7-8, and every doctor in Tulsa invites every doctor in Oklahoma to attend this meeting—which will be the 48th annual affair of its kind—and help us make it the largest and if possible the best state medical meeting.

This year, probably more than ever before, every person who has had a finger in the pie has worked for the success of the 1940 state meeting. The state officers without exception, the Tulsa County officers, the members of the Special Conventions Committee and everyone else have put their shoulders to the wheel and have worked out an outstanding program from the opening day until the last dog is hung Wednesday afternoon.

Headquarters will be at the Mayo Hotel where registration will open at 8:30 o'clock Monday morning, May 6. With the following skeleton outline of events scheduled for the three days.

MONDAY—1 p.m. Golf Tournament at Oakhurst Country Club. 2 p.m. Oklahoma Pediatric Society Mayo Hotel. 2 p.m. Public Health Department Mayo Hotel. 6 p.m. Golf Dinner at Oakhurst. 8 p.m. House of Delegates.

3 p.m. Council meeting.

TUESDAY—8 a.m. House of Delegates. 9 a.m. Special sectional meetings and programs. 2 p.m. General Scientific session in Crystal Ballroom. 2 p.m. Women's Auxiliary meeting at Mayo. 5 p.m. Tea for doctors and wives at Mayo. 8 p.m. Installation of President at Public Meeting in Akdar Theater. 10 p.m. President's reception and dance at the Mayo.

WEDNESDAY—8 a.m. House of Delegates meets. 9 a.m. Scientific Sections will be concluded. 12:30 p.m. First annual luncheon for County Secretaries. 2 p.m. General Scientific Session in Crystal Ballroom.

Headlining the list of guest speakers will be Dr. Alphonse McMahon of St. Louis, vice-president of the American Medical Association. In addition we also will have Dr. Edward H. Skinner of Kansas City, Mo.; Dr. Curtice Rosser of Dallas, and Dr. H. R. Casparis of the Vanderbilt University Hospital of Nashville.

One of the outstanding features of the week in Tulsa will be the "Hall of Health" which will be held at the Coliseum. While this educational exposition will run at the same time as the state meeting, the Hall will be entirely separate. (Continued on Page 21)

PROGRAM

48th Annual Meeting

Oklahoma State Medical Association

Monday, May 6th:

Registration, 16th Floor Mayo Hotel
Golf Tournament at Oakhurst 1 p.m.
Public Health Meeting 2 p.m.
Oklahoma Pediatrics Society 3 p.m.
House of Delegates Meeting 8 p.m.

Tuesday, May 7th:

House of Delegates 8 a.m.
Hall of Health at Coliseum, 7 p.m.
Registration Women, Mezzanine Floor Mayo Hotel
Scientific Sections 9 a.m.
Auxiliary Luncheon Tulsa Club
General Sections 2 p.m.
Tea—Mayo Hotel 5 p.m.
Auxiliary Tea at Philbrook
Public Inaugural Meeting at Akdar 8 p.m.
Annual Inaugural Dance, Mayo 10:30 p.m.

Wednesday, May 8th:

House of Delegates 8 a.m.
Election of Officers
Pneumonia Symposium at 8 a.m.
Scientific Sections 9 a.m.
General Sessions 2 p.m.

Stage Set For "Hall of Health"

Thomas G. Hull, director of exhibits for the A.M.A. will formally open exposition on Tuesday, May 7th; 50,000 persons expected to attend this educational exhibit.

By PAUL GROSSHART, M.D.
Chairman "Hall of Health" Committee

The opening of a barrage of publicity in the newspapers just as this article is going to press, marks the final steps in presenting to the public—THE HALL OF HEALTH—the first exposition of health to be shown in Oklahoma and one of the first few in the United States.

Exhibits for the Hall of Health are arriving in Tulsa daily and the whole show is rapidly taking shape and promises to be an outstanding show of its kind during the week of May 7 to 12 in the Coliseum under the sponsorship of the Tulsa County Medical Society.

The Hall of Health Committees have been working every day for the past three months on the details of this huge health program which is being developed along the lines of the Hall of Science expositions at the New York World's Fair and the San Francisco exposition.

Every allied organization is co-operating in making this show a success and to make it more valuable and interesting from the public viewpoint. The Tulsa Dental Association is preparing an elaborate show as one of the feature attractions. The American Medical Association, national insurance companies, and other interested groups are taking part in this program.

The Hall of Health is an exposition designed for the public, to bring in a visual manner the story of how medical science, dentistry, public health, and allied agencies play a part in safeguarding and protecting the health of mankind.

The public is demanding to know more and more about what goes on inside their bodies in this rapidly moving age, and is primarily interested in his health which is its greatest asset and for

this reason a plan has been worked out to help inform the public. The Hall of Health shows how the activities of medicine, pharmacy, nursing, hospitals and other institutions are correlated as a means of protecting and preserving the health. This show will give the individual an opportunity of actually learning about himself and will give him an insight into the proper care he should be taking of his body.

The anatomy of the human body will be visualized by the means of the famous Transparent Woman and also the "Dissectible Woman." These life-sized figures will be so shown that the public can actually study the make-up of their bodies and get some concrete idea of what their bodies are all about. These figures are illuminated internally and will be illuminated as a lecturer unfolds the physiology of man. A special exhibit of the heart, showing actual amplification of the heart-beat, will be featured.

The organization personnel of committees for the Hall of Health follow:

I. Scientific Exhibits: J. E. McDonald, chairman; B. L. Branley, E. R. Denny, R. M. Shepard.

II. Commercial Exhibits: J. F. Gorrell, chairman; R. Q. Atchley, E. L. Cohenour.

III. Special Exhibits: Paul Cameron, chairman.

IV. Publicity: T. H. Davis, chairman; G. H. Henry, M. D. Henley.

V. Ticket Sales: W. S. Larrabee, chairman; Joe Fulcher, James Stevenson.

VI. Schools: Mabel Hart, chairman; H. J. Evans, W. A. Waller.

VII. General Arrangements: H. B. Stewart, chairman; John Perry, W. A. Showman.

PRESIDENT'S PAGE

By the time this number of the BULLETIN is in the hands of the members we will have been through a strenuous week of activities. This is being written in anticipation of Medical Week, but I am sure that we will be able to look back and say that it has been most successful from every angle.

We will feel that now we might relax for a while and rest on our laurels. This is hardly possible.

The scope of our medical society has increased so much during the past few years that it is now a rapidly moving force in the community whose possibilities for permanent good are unlimited. Several of the important functions of the society have been permitted to lag during the past few weeks because of the tremendous activities of the immediate past. It is necessary now that we pick up these loose ends and continue with the internal development which was started in former years.



President.

Medical Calendar

SATURDAY, May 4th:

Radio Broadcast at 2:45 p.m. Station KTUL. Dr. T. H. Davis.

MONDAY, May 6th:

Morningside Hospital Staff Meeting.

MONDAY, TUESDAY, WEDNESDAY, May 6, 7 and 8:

OKLAHOMA STATE MEDICAL MEETING.

MAY 7th to 12th, inc.:

Don't forget the HALL OF HEALTH at the Coliseum from 9:00 a.m. to 10:00 p.m.

TUESDAY, May 7th:

Mercy Hospital Staff Meeting.

SATURDAY, May 11th:

Radio Broadcast at 2:45 p.m. Station KTUL. Dr. Mont V. Stanley.

MONDAY, May 13th:

Tulsa County Medical Society meeting. Mayo Hotel at 8:00 p.m.
Program: What's New in Obstetrics by Dr. Chas. H. Eads; What's New in Gynecology by Dr. J. C. Peden.

TUESDAY, May 14th:

Tulsa General Hospital Staff Meeting.

SATURDAY, May 18th:

Radio Broadcast at 2:45 p.m. Station KTUL. Dr. H. Lee Farris.

MONDAY, May 20th:

St. Johns Hospital Staff Meeting.

TUESDAY, May 21st:

Flower Hospital Staff Meeting.
Office Assistants meeting at Michaelis Cafeteria at 5:00 p.m.

SATURDAY, May 25th:

Radio Broadcast at 2:45 p.m. Station KTUL. Dr. Marvin D. Henley.

SUNDAY, May 26th:

There will be a T.C.M.D.A. breakfast at Mohawk park at 6:00 a.m.
Meeting place: Medical Arts Bldg. Price, 25c. Be sure and come as there will be fun for everyone.

MONDAY, May 27th:

Tulsa County Medical Society meeting. Mayo Hotel at 8:00 p.m.
Program: Tuberculosis and Admissions to the State Hospital by Dr. Forrest P. Baker of Talihina, Okla.

The BULLETINEditorial
CommitteeLOGAN SPANN, M. D.,
Chairman.
F. L. UNDERWOOD, M. D.
CARL J. HOTZ, M. D.

Managing Editor..... LLOYD STONE



Published monthly on the 3rd day of each month, at the executive offices of the Tulsa County Medical Society, 1202 Medical Arts Building, Tulsa, Oklahoma.

VOL. 6 MAY, 1940 No. 5

TULSA'S HOSPITALS OBSERVE MAY 12th

On National Hospital Day the public pauses to learn something of the unceasing work of our hospitals, whose influence for our protection is measured not only by the 700,000 men, women and children served daily in the hospital beds, but by the growing number of well trained, efficient doctors, nurses and other health workers who are fitted for their work by the hospitals. Without the equipment, the personnel and above all the spirit of research and progress that characterizes the hospital, our land still would be swept by pestilence and plague; for the hospital is a bulwark against epidemic and widespread disease as well as a haven for those whom the doctor can not adequately serve at home or in the office.

A moment's reflection will show that the service represented by the army of more than half a million men and women, the hospital trustees, medical staffs, auxiliaries and personnel of the hospitals, deserves one day out of a whole year for public consideration. This army fights for health and happiness 24 hours a day, every day, and at a conservative estimate saves 630,000 lives annually.

And so we have National Hospital Day, May 12th. On this day Tulsa's

hospital joins with thousands of hospitals in the United States and Canada, and with hospitals in such distant places as China, Alaska, Australia and other lands, to encourage the public to know hospitals better. On National Hospital Day interesting, instructive programs are arranged by the hospitals, and everybody is welcome.

National Hospital Day, inaugurated May 12, 1921, has become an occasion when hundreds of thousands of people visit the hospitals. It is a day for open house. It is an opportunity for the public to visit the community institution, to learn something of its services, facilities, purposes and problems.

The hospital has become an important factor in community life. It is a place, not only for the care of the sick, but for teaching and research. It is, in fact, a health center. You are cordially invited to visit us. You will have an interesting and profitable time.

The observance of May 12th as National Hospital Day in Tulsa, with the aim of directing public attention to the fine humanitarian effort of our Tulsa Hospitals, is deserving of all co-operation and support. This movement, although originating as recently as 1921, has not only spread throughout the United States and Canada, but has been inaugurated in a number of other countries. In selecting the birthday anniversary of Florence Nightingale you are making the occasion, incidentally, a memorial to one of the great women of the nineteenth century.

He had just returned from a temperance meeting at which he was the chairman.

"Well, dear," said his wife, "how did the meeting go?"

"Quite well, except for a lapse on the part of the speaker."

"What did he do?"

"He tried to blow some foam off a glass of water!"

*Operating Under Supervision
Oklahoma Insurance Department*

LOSS OF TIME

from

SICKNESS OR ACCIDENT

is Completely Covered

BY THE LIFE-TIME COVERAGE POLICIES OF

Physicians Life & Casualty Insurance Co.

HOME OFFICE: SPRINGFIELD, MISSOURI

Our "DOCTOR" Policy is designed for and restricted to the Doctor. It covers all accidents and every disease and pays from the first day to a lifetime.

For full information relating to this
Policy detach this slip and mail to:

**Physicians Life & Casualty
Insurance Company**

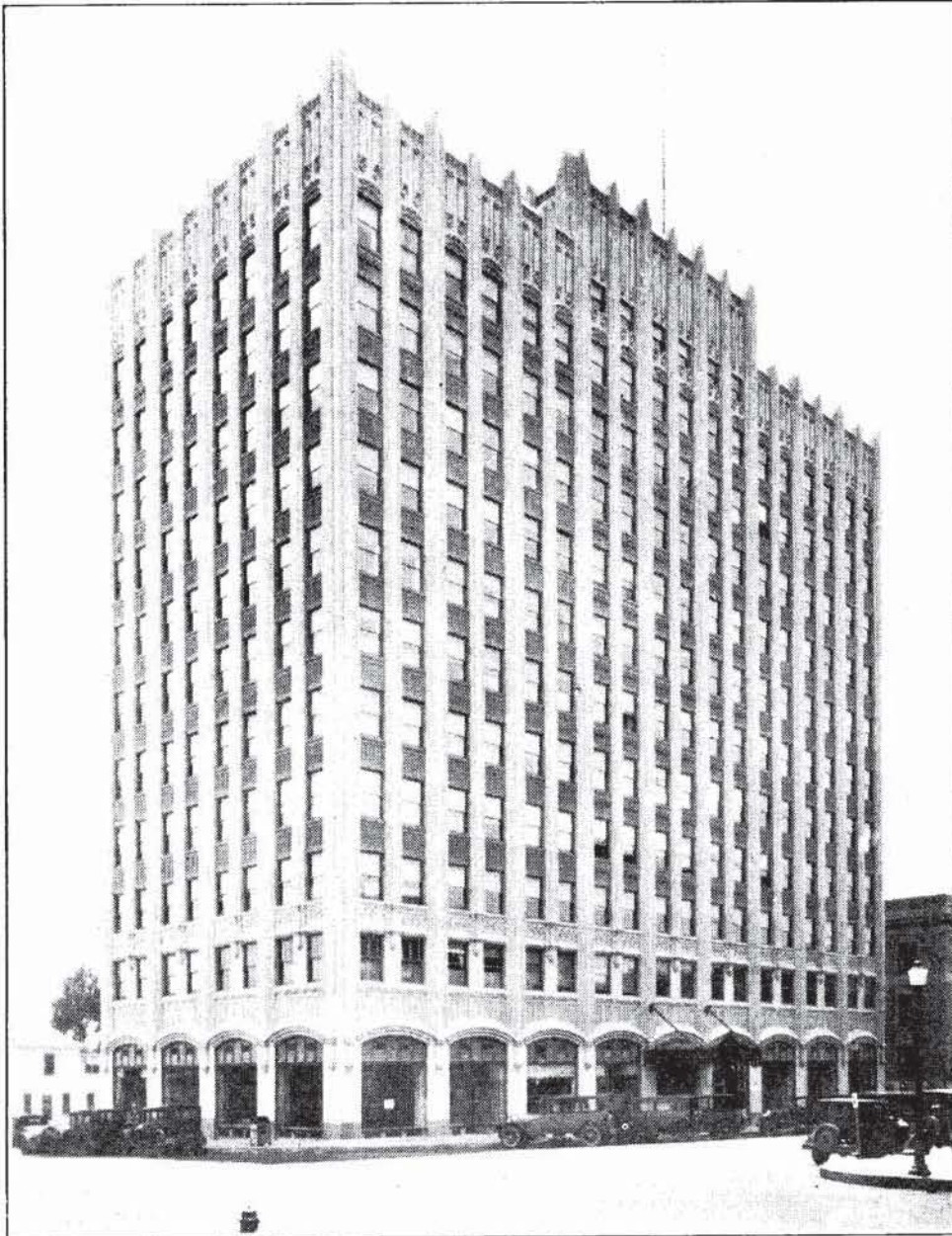
Woodruff Building
Springfield, Missouri

Name _____

Age _____

Address _____

The Medical Center Of Northeast Oklahoma



Medical and Dental Arts Building

Sixth Street and Cheyenne Avenue

Tulsa, Oklahoma

G. H. GALBREATH COMPANY, Operators

MAX TEEL, Building Manager

Clinic Report

FOR MONTH OF APRIL

Total number of patients seen in Clinic 1,370

Classification:

| | | | |
|---------------------------|-----|-------------------|-----|
| Medical | 415 | Diathermy | 17 |
| Pediatrics | 75 | Tonsils | 41 |
| Urology | 50 | Rectal | 43 |
| Gynecology | 125 | Orthopedics | 18 |
| Surgery | 135 | Neurology | 22 |
| Ear Nose and Throat | 64 | Tumor | 17 |
| Eye | 98 | Skin | 42 |
| Variacose | 16 | Dental | 147 |
| | | Heart | 31 |

Total number of patients treated in County-City-State Venereal Clinic at
831 North Boulder: This is 4 treatments per month for 631 persons... 3,324

Total number of patients seen in hospitals (approximately)..... 106

Total number of patients seen at home (approximately)..... 500

TOTAL NUMBER OF PATIENTS FOR APRIL..... 5,167

Drugs purchased for Clinic\$1,350.00

Drugs on hand at close of month\$1,650.00

Total number of prescriptions filled from Clinic Drug Room 1,523

Drugs also furnished to Poor Farm, County Jail, and Municipal Hospital.

Hospital Claims for April\$5,160.00

Clinic Operating Expense:

Nursing Staff\$ 325.00

Clinic Overhead-Misc. Expense 300.00

Pharmacist 150.00

.....
\$775.00

LABORATORY REPORT:

Urinalysis 15

Blood Counts 70

Smears 46

Coagulations 43

Blood Sugars 5

Volume Index 2



MORNINGSIDE HOSPITAL

*One of Oklahoma's
finer hospitals*

1653 East Twelfth St.
Telephone 3-2131
TULSA, OKLAHOMA

AT YOUR SERVICE

*One of the largest stocks of prescription Drugs
in Oklahoma*

Our three way check system prevents mistakes.

Our fast turn over gives you fresh Drugs.

Our buying power gives the best price.

All work is handled by competent registered
Pharmacists.

We give your patient what you prescribe.

MEDICAL ARTS PRESCRIPTION SHOP

Medical Arts Building — Tulsa, Okla.

Phone 4-0121

STATE CONVENTION COMMITTEES

MAURICE J. SEARLE, M.D.
GENERAL CHAIRMAN

ADVISORY COMMITTEE

W. ALBERT COOK, M. D.
P. P. NESBITT, M. D.
GEO. OSBORN, M. D.
A. W. PIGFORD, M. D.
JAS. STEVENSON, M. D.
RUSSELL PIGFORD, M. D.
CHAS. HARALSON, M. D.
HENRY BROWNE, M. D.

PROGRAM COMMITTEE

E. O. JOHNSON, M. D., CHM.
FRANK A. STUART, M. D.
MARVIN HENLEY, M. D.

SCIENTIFIC EXHIBITS COMMITTEE

E. RANKIN DENNY, M. D., CHM.
H. H. PORTER, M. D.
GIFFORD HENRY, M. D.

COMMERCIAL EXHIBITS COMMITTEE

S. C. SHEPARD, M. D., CHM.
W. A. SHOWMAN, M. D.
MORRIS B. LHEVINE, M. D.

FINANCE COMMITTEE

H. B. STEWART, M. D., CHM.
J. C. PEDEN, M. D.
ROY L. SMITH, M. D.

ENTERTAINMENT COMMITTEE

HUGH EVANS, M. D., CHM.
J. C. SHIPP, M. D.
NED SMITH, M. D.

STATIONERY & BADGES COMMITTEE

ROY DUNLAP, M. D., CHM.
J. FRED BOLTON, M. D.
MONT STANLEY, M. D.

HOTEL RESERVATIONS COMMITTEE

RALPH MCGILL, M. D., CHM.
W. D. HOOVER, M. D.
B. L. BRANLEY, M. D.

WOMEN PHYSICIANS COMMITTEE

LUVERN HAYES, M. D., CHM.
MOLLY MCQUAKER, M. D.
MARCELLA RUPRECHT, M. D.

AUXILIARY COMMITTEE

MRS. W. L. LARRABEE, CHM.
MRS. JAMES STEVENSON
MRS. T. H. DAVIS
MRS. FRANK L. FLACK
MRS. LEON H. STUART
MRS. HUGH PERRY
MRS. CARL HOTZ

GOLF COMMITTEE

W. J. BRYAN, M. D., CHM.
R. Q. ATCHLEY, M. D.
HENRY BROWNE, M. D.

RESERVE OFFICERS COMMITTEE

T. H. DAVIS, M. D., CHM.
P. P. NESBITT, M. D.
IAN MCKENZIE, M. D.

FRATERNITY DINNERS COMMITTEE

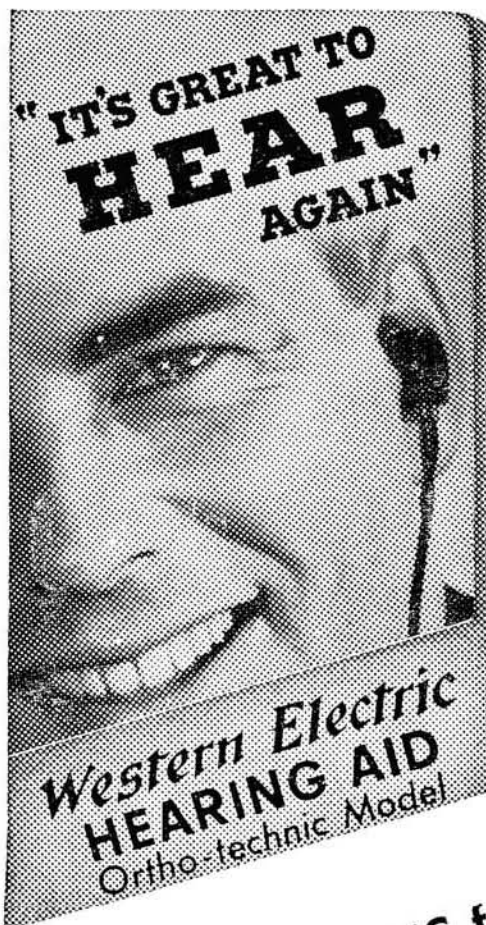
ROBT. WITCHER, M. D., CHM.
JOS. FULCHER, M. D.
HUGH PERRY, M. D.

SECTION HOSTS COMMITTEE

C. E. BRADLEY, M. D., CHM.
J. C. BROGDEN, M. D.
FRANK J. NELSON, M. D.

SPECIAL CLINICS COMMITTEE

I. A. NELSON, M. D., CHM.
IAN MCKENZIE, M. D.
ALLEN C. KRAMER, M. D.



ACCEPTED
By
A.
M.
A.

**BETTER HEARING for
YOUR PATIENTS thru . . .
Bell Telephone Research!**

**Visit Our Exhibit
At the State Convention
In Tulsa May 6, 7 and 8**

**AUDIPHONE
COMPANY**

JOHN L. STANLEY, MGR.

**TULSA LOAN BLDG. 12 EAST 4th
TULSA, OKLA., PHONE 4-8788**

THOUGHTFUL PEOPLE



You know the value of having your prescription compounded correctly. Our duty is to cooperate with physicians and supply their wants, as well as those of their patients, with the best materials available.

Prescription service is the heart of our business. It sets the standard of our many services. We feature prescriptions and use the utmost care in compounding them, and employ the best available pharmacists.

When Your Favorite Druggist is busy

Phone Us Your

PRESCRIPTIONS

4-7167

ADAMS DRUG

Prescription Specialists

1624 East Eleventh Street

Prescriptions Called For and Delivered

6-2148 . . . 6-0047

BALL DRUG STORE

College at Federal

PHONE US

Your Prescriptions For Accurate

Service and Prompt Delivery

STURDIVANT'S

1402 E. 1st

Ph. 3-7146

PRESCRIPTIONS

Schiek & Liddle

3244 E. 11th

Ph. 6-2186

ANTIPHLOGISTINE The Ideal Dressing

For the Relief of Inflammation and Congestion

The Denver Chemical Mfg. Co.

163 Varick St., New York

Tulsans Guests at Okla. City Meet

35 Tulsa Physicians charter bus for annual inter-society visit; Medical technicians hold convention; announce speakers for radio programs.

Some 35 Tulsa Physicians sailed to Oklahoma City on April 23rd to attend the regular meeting of the Oklahoma County Medical Society as guests in the annual inter-society program and reported a nice trip, a program furnished by the Tulsans, and a very fine visit with the Oklahoma Citizens.

Among the Tulsans who made the trip, most of them in the specially chartered bus, were: Doctors Henry Browne, R. C. Pigford, V. K. Allen, Ralph McGill, Gifford Henry, J. E. McDonald, Carl Simpson, James Stevenson, Hugh Evans, Ned R. Smith, M. J. Searle, James Markland, Margaret Hudson, W. Albert Cook, Morris Lhevine, P. P. Nesbitt, A. Ray Wiley, James Miner, R. Q. Atchley, I. A. Nelson, W. J. Bryan, jr. and many others whose names seemed to have slipped the typist.

The program was presented by Drs. Browne, Bryan and McDonald.



RADIO SPEAKERS FOR APRIL WERE: Doctors J. L. Miner, Marvin D. Henley and H. Lee Farris.

RADIO SPEAKERS FOR MAY ARE: Doctors T. H. Davis, Mont V. Stanley, H. Lee Farris, and Marvin D. Henley.

DR. I. A. NELSON SPEAKER FOR TECHNOLOGISTS

Dr. I. A. Nelson of Tulsa, member of the Board of Pathologists, will be the principal speaker on the banquet program of the annual spring meeting of The Oklahoma Society of Medical Technologists which will be held at

Tulsa May 4 at the Mayo Hotel.

Plans have been made to entertain approximately 100 visitors at a meeting which will be a prelude to the medical week in Tulsa, featuring the annual meeting of the Oklahoma State Medical Association and the public educational exposition—The Hall of Health.

A part of the convention program will be devoted to discussions of laboratory procedures for the early diagnosis of pneumococic pneumonia, determinations of sulphanilamide and sulphapyridine and various laboratory problems.

The Oklahoma Society of Medical Technologists extends a cordial invitation to and urges all technicians interested in laboratory problems to attend this meeting and enjoy the good will and fellowship of other Oklahoma technicians.

Exhibits and trips to clinical laboratories will be other features of the annual meeting here, the program committee announced.

PATHOLOGICAL-CLINICAL CONFERENCES

You are cordially invited to attend the pathological-clinical conferences which are held every other Wednesday from 7:30 to 9:00 p.m. at Morningside Hospital. Cases are presented and discussed by all the doctors and then the pathological findings are presented by Dr. Leo Lowbeier, pathologist, who gives the pathological findings, both gross and microscopic, by means of colored photographs and tissue sections and then correlates the clinical findings with the pathology found.

Up to now the following autopsy cases have been presented and discussed:

Operated carcinoma of the stomach with different peritoneal and cardiac complications.

Acute yellow atrophy of the liver.

Volvulus in a case of periappendicular

abscess with adhesions.

Sudden death after ruptured basal arterial brain-aneurysm.

Portal cirrhosis of the liver with fatal hemorrhage from ruptured esophageal varix.

Hemorrhage of the brain in a case of hypertension with bilateral chronic pyelonephritis and nephrolithiasis.

Chronic otitis media complicated with purulent meningitis.

Subacute otitis media complicated with epidural abscess, sinus-thrombosis and brain abscess.

Chronic heart-failure from decompensated hypertrophy with complications.

Ruptured duodenal ulcer with sub-diaphragmatic abscess and empyema of the pleura.

MEAD-JOHNSON NEWS LETTER

During the hot weather, when fat tolerance is lowest, many physicians have found it a successful practice to transfer

cod liver oil patients to Mead's Oleum Percomorphum.

Due to its negligible oil content and its small dosage, this product does not upset the digestion, so that even the most squeamish patient can "stomach" it without protest.

There are at least two facts that strongly indicate the reasonableness of the above suggestions: (1) In pre-matures, to whom cod liver oil cannot be given in sufficient dosage without serious digestive upset, Mead's Oleum Percomorphum is the antiricketic agent of choice. (2) In Florida, Arizona and New Mexico, where an unusually high percentage of sunshine prevails at all seasons, Mead's Oleum Percomorphum continues increasingly in demand, as physicians realize that sunshine alone does not always prevent or cure rickets.

Mead Johnson & Company, Evansville, Indiana, invite you to send for samples of Mead's Oleum Percomorphum for clinical use during the summer months to replace cod liver oil.

Tulsa General Hospital

We Offer to You and Your Clientele

1. A complete redecorated hospital.
2. A graduate and registered nurse in charge of every department.
3. A registered X-Ray and laboratory technician.
4. Inner-Spring mattresses on all beds.
5. An unexcelled service at a substantial savings.
6. Remodeled and redecorated nursery.
7. A charter member and worker of group hospital service.

Tulsa General Hospital

R. L. (DICK) GREEN, Manager

9th and Jackson

Phone 2-8281

(Continued from Page 7)

Special attention has been given to the Commercial as well as the Scientific exhibits of the State Meeting which will be located on the registration floor of the Mayo Hotel. More than twice as many outstanding nationally known commercial firms than ever before have signed up for space and will exhibit in Oklahoma for the first. The Scientific Exhibits should prove educational as well as interesting this year.

And—if this is not the most outstanding; the most interesting; the most valuable; and the largest state medical meeting ever held in the state, then it will not be the fault of the men who have worked for months getting things in shape for the whing-ding here. Mark the days off on your calendar and hang your troubles outside and come to Tulsa for the 48th annual meeting. We invite you. The Medical Society invites you. The whole city invites you. And we want you to come.

Headquarters—Mayo Hotel, Tulsa.

Registration—Sixteenth Floor, Mayo Hotel. All physicians, except those from outside the state and visiting guests, must hold membership cards for 1940 before registering. Dues will not be accepted at the meeting except from county secretaries. Registration will open at 8:00 a.m. Monday.

Guest Speakers—Alphonse McMahon, M.D., Vice-President American Medical Association, Senior Instructor in Medicine, St. Louis University, St. Louis, Mo.; Edward H. Skinner, M.D., American Board of Radiology, American College of Radiology, Kansas City, Mo.; Horton R. Casparis, M.D., Professor of Pediatrics, Vanderbilt University School of Medicine, Tenn.; Curtice Rosser, M.D., Professor of Proctology, Baylor University School of Medicine, Dallas, Texas.

General Sessions—The General Sessions will be held at 2:00 p.m. Tuesday and Wednesday, May 7 and 8, in the Crystal Ballroom, Sixteenth Floor, Mayo Hotel.

Council—The Council will convene

at 3p.m. Monday, May 6, in the French Room, Mezzanine Floor, Mayo Hotel, and thereafter on the call of the President.

First Annual Secretaries Meeting—It is hoped that from this meeting will come the impetus to make this an annual affair. The first meeting will be a luncheon Wednesday, May 8, at 12:30 p.m. at the University Club. The entire program will be devoted to Association business between the component county societies and the office of the Association. All officers of the county societies are urged to attend.

Oklahoma Pediatric Society—The meeting of the Oklahoma Pediatric Society will be in the Junior Ballroom, Mezzanine Floor, Mayo Hotel, at 2:00 p.m. on Monday, May 6.

Public Health Meeting—This meeting will be held in the Ivory Room, Mezzanine Floor, Mayo Hotel, Monday, May 6, at 2:00 p.m.

Tuberculosis Symposium—Will be held at 9 o'clock Wednesday morning in the French Dining Room, Mezzanine Floor, Mayo Hotel.

Golf Tournament—The annual Golf Tournament will be Monday afternoon, May 6, at the Oakhurst Country Club. Teeing off time will be one o'clock. An entrance fee of \$3.00 will be charged and will cover green fees, accoutrements and buffet dinner. There will be ample time for all contestants to complete their matches and return to the Mayo for the House of Delegates meeting. Prizes are being awarded for the different flights and are unusually attractive.

Medical Reserve Officers—There will be a luncheon Tuesday noon, May 7, on the Mezzanine Floor of the Mayo Hotel. Tickets will be on sale either in the lobby or at the registration desk.

Women's Auxiliary—The meetings of the Auxiliary will be held in the Open Parlor, Mezzanine Floor, Mayo Hotel. The Executive Committee will meet at 7:30 p.m. Monday, May 6, and the first general meeting will be at 9:00 a.m. Tuesday, May 7.

Professional Directory

| | |
|---|---|
| <p>VICTOR K. ALLEN, M. D. Proctology 1001 Medical Arts Building Tulsa, Oklahoma</p> | <p>E. RANKIN DENNY, M. D. Diagnosis and Clinical Investigation Allergy 1105 Med. Arts Bldg. Tel. 4-4444</p> |
| <p>W. S. LARRABEE, M. D. Roentgenology 411 Med. Arts Bldg. Tel. 4-3111</p> | <p>I. A. NELSON, M. D. Tissue and Clinical Pathology 1107 Med. Arts Bldg. Tel. 4-1835</p> |
| <p>RUSSELL C. PIGFORD, M.D., F.A.C.P. Internal Medicine Cardiology 1001 Med. Arts Bldg. Tel. 5-3762</p> | <p>WADE SISLER, M. D. Orthopedic Surgery 807 South Elgin Tel. 5-3132</p> |
| <p>JOSEPH FULCHER, M. D. Proctology—Urology 210 Med. Arts Bldg. Ph. 3-4429</p> | <p>L. C. NORTHRUP, M. D. Surgery, Gynecology and Obstetrics 1307 S. Main Ph. 4-5571</p> |
| <p>A. RAY WILEY, M.D., F.A.C.S. Surgery 812 Med Arts Bldg. Ph. 3-0202</p> | <p>M. J. SEARLE, M. D. Pediatrics 202 Med. Arts Bldg. Ph. 4-2901</p> |
| <p>JOHN G. LEFTWICH, D.D.S. Practice Limited to Orthodontia 803 Oklahoma Building Ph. 4-7592</p> | <p>W. ALBERT COOK, M.D. Eye-Ear-Nose-and-Throat 1106 Med. Arts Bldg. Ph. 3-6008</p> |
| <p>RALPH A. MCGILL, M.D. Surgery—Radium 1010 Med. Arts Bldg. Ph. 4-4215</p> | <p>JAMES STEVENSON, M. D. Dermatology—Syphilology 615 Med. Arts Bldg. Ph. 5-2562</p> |
| <p>JAMES C. BROGDEN, M.D. Surgery and Diagnosis 414-415 Med. Arts Bldg. Ph. 2-2516</p> | <p>FRED Y. CRONK, M.D. GIFFORD HENRY, M.D. Diagnosis—Surgery Industrial Surgery 801 Med. Arts Bldg. Ph. 3-5101</p> |
| <p>MARVIN D. HENLEY, A.B., B.S., M.D. Eye-Ear-Nose and Throat 911 Med. Arts Bldg. Phone 2-6358</p> | <p>HARRY GREEN, M.D. Practice Limited to Diseases of the Skin 1116 Med. Arts Bldg. Ph. 4-2326</p> |

SCIENTIFICALLY PRODUCED AND PROCESSED; PHYSIOLOGICALLY
CORRECT, AND CLINICAL VALUE DEMONSTRATED!

VITAMIN D

SOFT CURD MEADOW GOLD MILK

PASTEURIZED

IRRADIATED

HOMOGENIZED

BEATRICE CREAMERY COMPANY



OAKWOOD SANITARIUM

Oakwood Sanitarium is prepared to receive and care for any type of problem in the entire range of Neuro-psychiatric cases. Alcoholics and drug addicts are accepted. A completely equipped hydro-therapeutic department is maintained. Patients properly segregated for their best interests.

Inquiries cheerfully answered—Interested visitors are welcome.

Oakwood Sanitarium is maintained and operated solely under the resident managership of Dr. Ned R. Smith for his private Neuro-psychiatric practice.

Tulsa City office, 703 Medical Arts Bldg.

Hours, 1 to 4 by appointment.

SEC. 562, P. L. & R.

U. S. POSTAGE

PAID

TULSA, OKLA.
PERMIT No. 13

(Return Postage Guaranteed)



R. W. (BOB) HUDSON SAYS:

If some one is sick, you're the doctor. If your supply of stationery or statements is low—I'm the doctor.

COMMERCIAL PRINTING COMPANY

417 East 3rd Street

Phone 2-2450

MERKEL X-RAY CO.

Exclusive Distributors for—

Westinghouse X-Ray Equipment

Burdick and High Tension
Physical Therapy Equipment

•
Complete Stock
X-Ray and Physical Therapy
Supplies

•
TULSA

612 S. Cincinnati Tel. 2-4897

OKLAHOMA CITY

512 N. W. 17th Tel. 4-2338

FLOWERS

Please the most
fastidious.

•
Let us solve your problem. We
have the finest selections for all
occasions.

•
PHILTOWER
FLOWER SHOP

Mrs. O. L. Setterstrom

Phone 4-4843

Philtower Bldg.

TYPEWRITERS

— — —
With Standard and Medical Keyboards
New and Reconditioned
— — —

TULSA TYPEWRITER COMPANY

Phone 8279

309 S. Boston