

# THE BULLETIN

OF THE TULSA COUNTY MEDICAL SOCIETY

VOL. 5

TULSA, OKLAHOMA, DECEMBER, 1939

NO. 12

TULSA COUNTY MEDICAL SOCIETY  
**ANNUAL ELECTION**

Monday night, December 11

As provided in our Constitution and By-Laws, the final meeting of the year will be devoted to the election of officers for 1940 and for hearing all committee reports.

It is very important that every member of the Medical Society be present and take part in the annual election.

This will be the last meeting of the current year as the fourth Monday of December falls in the holiday period and no meeting is held on that date.

**REMEMBER**

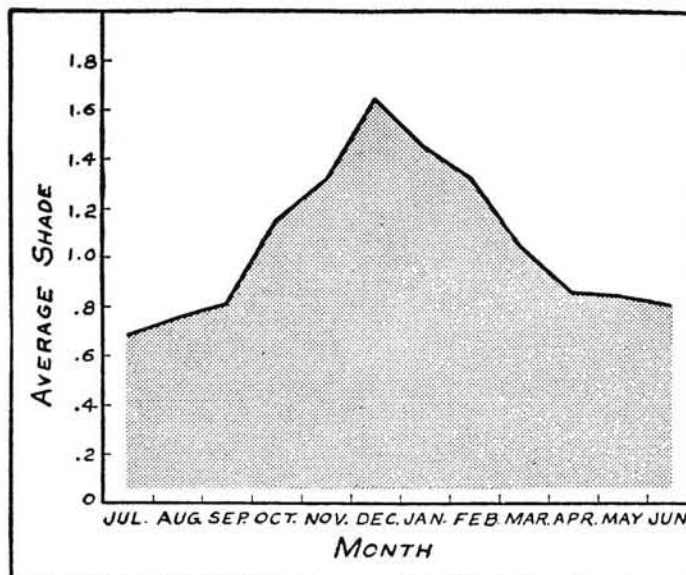
**MONDAY NIGHT—DEC. 11th—8 p.m.**

**MAYO HOTEL**



# WEATHER FORECAST— HEAVY SMOKEFALL

**S**MOKE exerts a definite influence on the weather at this season by reducing the amount of sunlight. Beginning in September there is a steady rise in atmospheric pollution until in December it becomes double that of midsummer, according to a recent report of a two-year study made by the U. S. Public Health Service in ten of the largest American cities, representing a population of millions. One of the most surprising findings was that there is no decrease in the dust content of the air either during or after a rain.



Average atmospheric pollution in 10 large American cities, 1931-1933. It is probable that conditions are similar in many smaller cities especially where soft coal is used and wind velocity is low.

## Winter Sunlight an Unreliable Antiricketic

Atmospheric pollution is but one of many forces militating against the therapeutic effects of ultraviolet rays in winter. Others, to name only a few, are cloudiness, precipitation, and clothing. In winter, moreover, it is often impracticable to give sunbaths to infants during the very time they are most susceptible to rickets—the first six months of life.

## Dependable the Year 'Round OLEUM PERCOMORPHUM

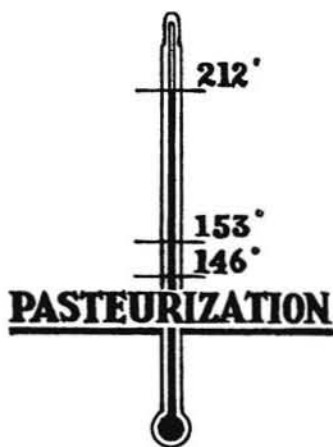
The physician can dispel uncertainty in the treatment of rickets simply by prescribing a few drops of Oleum Percomorphum daily. Each gram supplies not less than 60,000 vitamin A units and 8,500 D units (U.S.P.). This maximum vitamin potency in minimum bulk gives Oleum Percomorphum outstanding usefulness for young and premature infants. Constant bioassay and special processing of this antiricketic assure the stated vitamin potency and low percentage of fatty acids. Supplied in 10 and 50 c.c. bottles and 10-drop capsules in boxes of 25 and 100.

**MEAD JOHNSON & COMPANY, Evansville, Indiana, U.S.A.**

Please enclose professional card when requesting samples of Mead Johnson products to cooperate in preventing their reaching unauthorized persons.

# PASTEURIZED

IS Doubly SAFE  
MILK



212°F. Milk Boils  
185°F. Milk Scalds  
160°F. Cooking Begins  
145°F.  
142°F.

**PASTEURIZATION**

139°F. Tuberculosis Killed  
137°F. Typhoid and Undulant Fever Killed  
134°F. Scarlet Fever, Streptococcic sore Throat and 27 Strains of Streptococci Killed  
131°F. Diphtheria Killed

“As the result of several years extensive experience with commercial pasteurization and of recent researches it has been demonstrated that a temperature of 142 to 145 degrees F., with a holding period of 30 minutes, serves the purpose of protecting the public health and preserving the integrity of the milk.”

M. J. Rosenau, M.D.,  
“Preventive Medicine and Hygiene,”  
1931 Edition

“Resolved, That the International Association of Dairy and Milk Inspectors endorses supervised holding pasteurization as the only adequate safeguard for milk supplies; and furthermore be it

“Resolved, That this Association notifies the public of the inadequacy of substitutes, or alternatives, for pasteurization.”

International Association of Dairy and Milk Inspectors.

**MEADOW GOLD  
GLENCLIFF DAIRY  
GOLD TOP CREAMERY**

**HAWK'S DAIRY  
PURE WHITE DAIRY  
QUALITY MILK CO.**

# JUST WHAT THE DOCTOR ORDERED



*Excellent Service*

*Pleasant Atmosphere*

*"Air Conditioned" Comfort*

**THE MAYO**  
IN TULSA





Doctor:

This is a Clapp "Starter Mocc," roomy—extreme flexibility. "Barefoot freedom with shoe protection." Send your patients where fitting is an art.

### BABYLAND

14 East 6th St. Tulsa

LITERATURE AND SAMPLES SENT TO ANY INTERESTED PHYSICIAN

### Recommend a Hearing Aid?

Yes! and you can refer your patients to our offices with complete confidence in the knowledge that conscientious and proper attention will be given.

The patient's hearing is first tested on the 6A Audiometer and the Audiogram is submitted to the Doctor for inspection and suggestions *before* the Audiphone is finally fitted.

Bone or air conduction instruments will be fitted as recommended by the Doctor. After the fitting, a free weekly check-up service determines if adjustments are needed.

### *Western Electric*

**BELL TELEPHONE LABORATORIES**

AUDIPHONE HEARING AIDS

913 Tulsa Loan Bldg.—12 E. 4th St.  
John L. Stanley, Mgr. Phone 4-8788

Accepted by  
A.M.A. Council on Physical Therapy

## CONTENTS

Advertisers .....	5
Election of Officers .....	7
Clinic Cuts Costs .....	8
Clinic Committee Report .....	9
President's Page .....	10
Medical Calendar .....	11
Dental Page .....	13
Editorials .....	14
Convention Committees .....	15
Clinic Schedule .....	17

## ADVERTISERS

Adams Drug .....	18
Audiophone Hearing Aids .....	5
Babyland .....	5
Ball Drug Store .....	18
Coca-Cola .....	4
Commercial Printing Company .....	24
Couper Supplies .....	16
Curtain's Prescription Laboratory .....	6
G. H. Galbreath Company .....	24
Paul Jensen Laboratories .....	12
Mayo Hotel .....	4
Meadow Gold Dairy .....	23
Mead Johnson and Co. .....	2
Medical Arts Prescription Shop .....	12
Medical Credit Bureau .....	21
Merkel X-Ray .....	24
Model Laundry .....	21
Morningside Hospital .....	12
Nurses Exchange .....	20
Oaklawn Sanitarium .....	23
Oklahoma Natural Gas .....	20
Pasteurized Milk .....	3
Phillips 66 .....	21
Philtower Flower Shop .....	6
Pontiac Motors .....	24
Professional Directory .....	22
Star Linen Co. .....	18
Sturdivant's .....	18
Schiek & Liddle .....	18
Tulco Laboratories .....	12
Tulsa Typewriter Co. .....	24

## THE PATIENTS ORDER

The Doctor Must Be Well  
Dressed.

THE ANSWER—

A "Model" Laundered Shirt.  
A "Model" Cleaned and  
Pressed Suit

ALSO—

Office Coats, Nurse Uniforms  
and Towels. Perfectly White  
and Thoroughly Sterilized.

**Model Laundry**  
& DRY CLEANING WORKS  
3-1146

## FLOWERS

Please the most  
fastidious.

Let us solve your problem. We  
have the finest selections for all  
occasions.

**PHILTOWER  
FLOWER SHOP**

Mrs. O. L. Setterstrom

Phone 4-4843

Philtower Bldg.

## FOR YOUR PROTECTION



- Quality ingredients
- Precision compounding
- A high standard of ethics

**CURTAINS PRESCRIPTION LABORATORY**

SIXTH AND BOULDER

PHONE 4-7116

*A Strict Ethical Pharmacy in Policy and Appearance*

# THE BULLETIN

OF THE

## TULSA COUNTY MEDICAL SOCIETY

A. Ray Wiley, M.D., *President*R. C. Pigford, M.D., *President Elect*R. Q. Atchley, M.D., *Vice-President*Roy L. Smith, M. D., *Secretary-Treasurer*LLOYD STONE, *Executive Secretary*

VOL. 5

TULSA, OKLAHOMA, DECEMBER, 1939

NO. 12

## Annual Election December 11th

Large attendance expected for final meeting of year at which officials for 1940 to serve with Dr. Russell Pigford, president-elect, will be chosen

The election of officers for the year of 1940 will be the principal item of business at the next regular meeting of the Tulsa County Medical Society, held December 11th in the Sixteenth Floor Banquet Room of the Mayo Hotel. All the officers who will serve with Dr. Russell Pigford, president-elect, will be chosen at this meeting and they will assume office at the first regular meeting in January.

Officers to be chosen will be president-elect; vice president; secretary-treasurer; one member of the board of trustees to serve five years; one member of the board of censors; and one member of the house of delegates to serve a term of five years.

The new member of the board of trustees will be elected to fill the seat left vacant through the expiration of the term held by Dr. J. C. Brogden. He will serve with the following trustees who will hold over: Dr. W. S. Larrabee (term expires in 1943; Dr. A. W. Pigford (term expires in 1942; Dr. M. J. Searle (term expires in 1941); and Dr. Ned R. Smith (term expires in 1940).

The newly elected trustees will serve terms of five years and will serve next year with; Dr. W. S. Larrabee and Dr. M. J. Searle (terms expire in 1943); Dr. George Osborne and Dr. James Stevenson (terms expire in

1942); and Dr. C. H. Haralson and Dr. R. M. Shepard (terms expire in 1941); and Dr. R. C. Pigford (term expires in 1940). In addition to these delegates, a full quota of eight alternate delegates will be elected.

The new member of the Board of Censors will serve with Dr. Marvin Henley and Dr. V. K. Allen who are hold-over members. Dr. G. A. Wall is the retiring member of this board.

This election meeting will be the final meeting of the current year and an unusually large attendance is expected by the program committee. The meeting will be devoted entirely to business matters and in addition to the election, reports of the officers and committee chairmen will be heard.

### REMEMBER:

Annual Meeting

December 11th

Time: 8:00 p. m.

Mayo Hotel

16th Floor

# Clinic Operation Cuts Charity Bills

**Drug bills show sharp reduction in first month despite purchases for initial stock; hospital costs held to lowest figure since fiscal year opened; 1,316 patients treated.**

Despite the fact that the first month's operation of the Tulsa Medical Clinic was burdened with excessive costs hanging over from October and with heavy costs resulting from inadequate initial supplies of drugs, the first monthly report of the Clinic Committee indicates that the present County Indigent Medical program will not only bring the taxpayers a substantial saving in money but will also afford care and treatment to a much larger group of people than ever before.

The report for the month shows the costs of medicine have dropped from a figure of \$2,100 in October to \$1,726 in November. This figure for November includes over \$500 in bills contracted in October before the clinic was opened. In addition to this, Charles Ditman, pharmacist, reports that of the \$881.00 spent for his initial stock of drugs for the clinic he has approximately \$600 worth of drugs on hand at the close of the month. These figures show that Tulsa County actually held the drug cost for the month of November to approximately \$500 where in the past the figure fluxuated between \$2,100 and \$3,500. Besides medicines for 935 prescriptions filled during the month, drugs were furnished to Tulsa General Hospital, St. Johns Hospital, the county poor farm and the county jail.

Hospital claims for November dropped to \$3,787.37, which was the lowest figure touched during the present fiscal year. In August the cost was \$5,494.75; in September, \$4,653.46; and in October it was \$4,086.85.

A total of 740 individuals were given medical aid at the clinic during the

month. Most of these returned for treatment in one of the specialty sections more than once and the figures show that 1,316 patients were treated in all departments. The detailed report of the committee (found on page 9) gives an idea of the manner in which the load was distributed in the various departments.

The committee called special attention to the dental work which is being handled by the Tulsa Dental Society. Dental care, consisting principally of extractions, was given 136 patients during the month.

The Clinic Committee is now working out plans to reduce these costs still further and to provide a greater amount of care for a still greater number of indigent patients.

---

## DOUBLE EXPOSURE

"She is a nicely reared girl, isn't she?"

"I should say so. Not bad from the front either."



**Free  
Parking  
For  
Doctors**

**CHICK WOODARD**

**Appreciates Your Business**

**Cars Delivered On Call**

**7th and Cheyenne — Phone 4-7033**



## NOVEMBER REPORT

### TULSA COUNTY MEDICAL CLINIC

Total number of patients seen in Clinic..... 1,316

Classification:

Internal Medicine .....937	Orthopedics ..... 8
Tonsilectomies ..... 22	Dermatology ..... 22
Dental .....136	Eye ..... 76
Neurology ..... 15	Gynecology ..... 23
Pediatrics ..... 19	Urology ..... 51
Tuberculosis ..... 5	Heart ..... 3
Ear-nose-throat ..... 67	Minor Surgery ..... 16
Proctology ..... 9	Obstetrics ..... 7

Total number of patients treated in County-City-

State Venereal Clinic at 521 North Boulder:

This is 4 treatments per month for 631 persons..... 2,524

Total number of patients seen in hospitals (approximately)..... 100

Total number of patients seen at home (approximately)..... 500

**TOTAL NUMBER OF PATIENTS FOR NOVEMBER ..... 4,430** 4,430

Drugs purchased for Clinic .....\$ 881.50

Drugs on hand at close of month.....\$ 560.00

Total number of prescriptions filled from

Clinic Drug Room .....935

Drugs also furnished to poor farm, county jail, Tulsa General and St. Johns Hospitals.

Drug claims other than for Clinic: including approximately

\$500 in drugs purchased in October.....\$ 844.48

Total drugs for November .....\$1,726.02

Total drugs for October .....\$2,106.00

Hospital claims for November .....\$3,787.37

This is the lowest amount of hospital claims for any month this fiscal year:

August, 1939 .....\$5,494.75

September, 1939 ..... 4,653.46

October, 1939 ..... 4,086.85

November, 1939 ..... 3,787.37

Clinic Operating Expense:

Nursing Staff .....\$ 325.00

Clinic Overhead-Misc. Expense ..... 300.00

Pharmacist ..... 150.00

\$ 775.00 775.00

\$6,288.35 \$6,288.35

\*\*This does not include salaries of County Physician; Assistant Physicians; X-ray or Radium treatment; laboratory; special doctors account; or colored hospital.

# PRESIDENT'S PAGE

GOOD MORNING, Dr. New-President and Dr. President-Elect.

By the time this bulletin reaches the membership, or shortly afterwards, you will have elected a new President-Elect. May my blessings go with him and the incoming President.

This year, 1939, has been an eventful one, if not one of the greatest in the history of the Society. May I review with you some of these accomplishments?

During the year the County-Charity Clinic has become a reality. This, no doubt, is the outstanding accomplishment of the year.

We have also created a new City Department of Health under a non-partisan board, but which actually is controlled by our Society.

Another outstanding accomplishment was the opening of the Venereal Disease Clinic, April 20. This is one of the big items of the year.

The Credit-Collecting Bureau was revamped and the quarters remodeled and enlarged.

A new Physicians Telephone Exchange was established.

A new and improved place for meetings was found.

The final completion of the Physicians Liability Insurance was a fact on March 31.

One of the most important accomplishments of the year, if not the most important, was bring about the realization by the laity of Tulsa that we do have a wide awake medical society that is vitally interested in the welfare and the health of the community and that we have a society that actually accomplishes things for the betterment of the community. The people of Tulsa realize this now more than ever and we have the confidence of the public that is rightfully ours and we will continue in this confidence so long as our conduct deserves it.

(Continued on Page 20)



President

---

# Medical Calendar

---

**MONDAY, December 4th:**

Morningside Hospital Staff Meeting.

---

**TUESDAY, December 5th:**

Mercy Hospital Staff Meeting.

---

**WEDNESDAY, December 6th:**

Radio Broadcast at 4:30 p.m. Station KTUL. Dr. H. Lee Farris.

---

**MONDAY, December 11th:**

Tulsa County Medical Society Meeting, at 8:00 p.m. at 16th floor banquet room Mayo hotel. Election and business meeting.

---

**TUESDAY, December 12th:**

Meeting of District No. Two of the Oklahoma State Nurses Association. 1202 Medical Arts Bldg., 7:30 p.m.

---

**WEDNESDAY, December 13th:**

Radio Broadcast at 4:30 p.m. Station KTUL. Dr. J. L. Miner.

---

**MONDAY, December 18th:**

St. Johns Hospital Staff meeting.

---

**TUESDAY, December 19th:**

Office Assistants Christmas Party at 6:00 p.m. Everyone be sure and be there.

Flower Hospital Staff meeting.

---

**WEDNESDAY, December 20th:**

Radio Broadcast at 4:30 p.m. Station KTUL. Dr. Mont Stanley.

---

**MONDAY, December 25th:**

No Medical Society meeting.

---

**WEDNESDAY, December 27th:**

Radio Broadcast at 4:30 p.m. Station KTUL. Dr. Ned R. Smith.



# MORNINGSIDE HOSPITAL

*One of Oklahoma's  
finer hospitals*

1653 East Twelfth St.  
Telephone 3-2131  
TULSA, OKLAHOMA

## AT YOUR SERVICE

*One of the largest stocks of prescription Drugs  
in Oklahoma*

Our three way check system prevents mistakes.

Our fast turn over gives you fresh Drugs.

Our buying power gives the best price.

All work is handled by competent registered  
Pharmacists.

We give your patient what you prescribe.

## MEDICAL ARTS PRESCRIPTION SHOP

Medical Arts Building — Tulsa, Okla.

Phone 4-0121

MEETING FIRST TUESDAY OF MONTH

**PRESCRIBE:**

**TULCO**  
**TOOTH POWDER**  
and  
**TOOTH BRUSHES**

**TULCO LABORATORIES**  
1113 Medical Arts Bldg.

**DOCTOR . . .**

The high esteem with which your patients regard you has been won by your steadfast determination to supply them with products of determined worth.

FOR ALL TYPES OF  
LABORATORY SERVICE CALL

**PAUL M. JENSEN**

211 Medical Arts Bldg. Tel. 4-3320

**A GOLD CASTING**  
By  
**THERMOTROL**  
RICHMOND  
DENTAL LABORATORIES

314-15 Ritz Building  
Phone 4-0745

**TULSA DENTAL SOCIETY**

Office of Secretary  
TULSA, OKLAHOMA

**Members of the Tulsa Society**

- |                    |                    |
|--------------------|--------------------|
| Ammons, E. F.      | McCarty, O. H.     |
| Armstrong, Max G.  | McKeown, H. A.     |
| Back, L. P.        | Maness, C. W.      |
| Baker, H. J.       | Maness, J. F.      |
| Bowyer, S. P.      | Oliver, Richard T. |
| Childs, Casey      | Parker, Ira T.     |
| Cooper, Mark       | Roebken, H. G.     |
| Crume, L. E.       | Rozen, R. D.       |
| Denney, A. I.      | Rush, W. D.        |
| Enmeier, N. T.     | Sillers, E. D.     |
| Furrow, C. A.      | Sims, Fred E.      |
| Haynes, W. B.      | Sinks, O. F.       |
| Ingram, R. B.      | Smith, L. G.       |
| Ingram, R. P.      | Smoot, R. E.       |
| Klabzuba, E. E.    | Walters, A. L.     |
| Larson, W. H.      | Warwick, W. A.     |
| Leftwich, J. G.    | Wheeler, N. L.     |
| Lo Vellette, R. E. | Wilson, W. H.      |
| McCarty, I. E.     | Woodring, E. F.    |

# The BULLETIN

Editorial  
Committee

J. F. BOLTON, M. D.,  
Chairman.  
LOGAN SPANN, M. D.  
F. L. UNDERWOOD, M. D.

Managing Editor ..... LLOYD STONE



Published monthly on the 3rd day of each month, at the executive offices of the Tulsa County Medical Society, 1202 Medical Arts Building, Tulsa, Oklahoma.

VOL. 5      DECEMBER, 1939      No. 12

## AN A.M.A. PLATFORM

The American Medical Association, conservative to the point of exasperating many of its members, at a recent meeting of the Board of Trustees, adopted the following platform in regard to changes in the form of medical care for the nation.

1. The establishment of an agency of federal government under which shall be co-ordinated and administered all medical and health functions of the federal government exclusive of those of the Army and Navy.

2. The allotment of such funds as the Congress may make available to any state in actual need for the prevention of disease, the promotion of health and the care of the sick on proof of such need.

3. The principle that the care of the public health and the provision of medical service to the sick is primarily a local responsibility.

4. The development of a mechanism for meeting the needs of expansion of preventive medical services with local control of administration.

5. The extension of medical care for the indigent and the medically indigent with local determination of needs and

local control of administration.

6. In the extension of medical services to all the people, the utmost utilization of qualified medical and hospital facilities already established.

7. The continued development of the private practice of medicine, subject to such changes as may be necessary to maintain the quality of medical service and to increase their availability.

8. Expansion of public health and medical services consistent with the American system of democracy.

## MEAD-JOHNSON NEWS-CAST

If they could talk, Council Seals would say: "When you see one of us on a package of medicine or food, it means first of all that the manufacturer thought enough of the product to be willing to have it and his claims carefully examined by a board of critical, unbiased experts. . . . We're glad to tell you that this product was examined, that the manufacturer was willing to listen to criticisms and suggestions the Council made, that he signified his willingness to restrict his advertising claims to *proved* ones, and that he will keep the Council informed of any intended changes in product or claims. . . . There may be other similar products as good as this one, but when you see us on a package, *you know*. Why guess, or why take someone's self-interested word? If the product is everything the manufacturer claims, why should he hesitate to submit it to the Council, for acceptance?"

## BEE'S HONEY

A salesman taking his bride South on their honeymoon, visited a hotel where they boasted of their fine honey.

"Sambo," he asked the colored waiter, "where's my honey?"

"Ah don' know, boss," replied Sambo, eyeing the lady cautiously, "she don' work here no mo'."

# THE HOUSTON FIRE & CASUALTY COMPANY

presents the

## OKLAHOMA GROUP POLICY

For Physicians and Surgeons' Liability Insurance

1. PROVIDES: Every protection is given in this policy that is provided in any other policy issued in this state. It contains every standard provision in addition to other advantages.

2. PROVIDES: A \$25,000.00 protection against any one claim and \$40,000.00 against all claims during any one year.

3. PROVIDES: A Group Policy tailor-made for physicians and surgeons who are members of State Association and their respective County Societies at the time their applications are made.

4. PROVIDES: Unusual protection by allowing the Medical Society to choose its own trial attorney and attorneys to handle all claim adjustment.

5. PROVIDES: Authority for claims adjuster to make actual cash settlements direct.

6. PROVIDES: All the protection of the Houston Fire and Casualty Insurance Company plus all the resources of an adequate reinsurance program.

7. PROVIDES: The extra facilities of one of the large general agencies in the southwest, THE FRATES COMPANY, operated by Ben Voth and Paul Sisk.

8. PROVIDES: This complete insurance protection at the lowest rate ever offered to physicians and surgeons in Oklahoma, due to the large number to be covered under the single group and the restriction to Society Members only.

9. PROVIDES: A reducing scale of premium rates based upon the number of doctors insured and the total amount of claim losses, making the insurance practically on a "cost-plus" basis with a set maximum.

10. PROVIDES: The additional convenience of handling all insurance questions and problems directly by the doctors through the Executive Secretary who will act as liason between the Insuring Company, the General Agency, the attorneys and the County and State Medical Societies.

Address All Inquiries To:

(PAUL) (BEN)  
SISK & VOTH  
OPERATING AS  
THE FRATES CO.



219 Philcade  
Phone 2-6116  
TULSA,  
OKLAHOMA

- We take this opportunity to express our appreciation to you, the members of the Medical Profession, for your support and patronage.
- Our efforts to give you a reliable and efficient equipment and appliance service have proved successful, as has been evidenced by your growing and continued demand.
- May we, through this medium and at this Season, give you our assurance of continued and improved service and offer you our appreciation and thanks for your courteous patronage.
- May the coming Christmas Season and the New Year be a pleasant and prosperous one for all.

## **FRANK G. COUPER INC.**

(Opposite Central High)

211 East 6th Street

Tulsa, Oklahoma

PHYSICIANS, SURGEONS AND HOSPITAL EQUIPMENT AND SUPPLIES



Time	Monday	Tuesday	Wednesday	Thursday	Friday	Saturday
8:30-10:00	Medicine Hosp. Surgery Urology Gynecology-Obs Dentistry	Medicine Hospital Surg. Gynecology-Obs Dentistry	Medicine Hospital Surgery Urology Gynecology-Obs Dentistry	Medicine Hospital Surgery Gynecology-Obs Dentistry	Medicine Hosp. Surgery Urology Gynecology-Obs Dentistry	<b>Clinic Schedule</b>
10:00-11:00	Medicine Pediatrics Gynecology-Obs Urology Proctology	Medicine Pediatrics Gynecology-Obs Venereal-Colored	Medicine Pediatrics Gynecology-Obs Urology	Medicine Pediatrics Gynecology-Obs	Medicine Pediatrics Gynecology-Obs Urology Proctology	
11:00-12:00	Pediatrics Clinic Surgery	Pediatrics Clinic Surgery Neurology Venereal-Colored	Pediatrics Clinic Surgery	Pediatrics Clinic Surgery	Pediatrics Clinic Surgery Neurology	
12:00-1:00						
1:00-2:00	Eye-Ear-Nose	Dermatology Syphilology Venereal-White	Eye-Ear-Nose	Venereal-White	Eye-Ear-Nose Dermatology Syphilology Venereal-Colored	
2:00-3:00	Eye-Ear-Nose		Eye-Ear-Nose		Eye-Ear-Nose	
3:00-4:00						

Syphilis Clinic for White Thursday 8:30 at 521 North Boulder.  
 Syphilis Clinic for Colored Tuesday and Friday 8:30 a.m. at 521 North Boulder

# THOUGHTFUL PEOPLE



You know the value of having your prescription compounded correctly. Our duty is to cooperate with physicians and supply their wants, as well as those of their patients, with the best materials available.

Prescription service is the heart of our business. It sets the standard of our many services. We feature prescriptions and use the utmost care in compounding them, and employ the best available pharmacists.

When Your Favorite Druggist is busy

Phone Us Your

**PRESCRIPTIONS**

**4-7167**

**ADAMS DRUG**

*Prescription Specialists*

1624 East Eleventh Street

**PHONE US**

Your Prescriptions For Accurate

Service and Prompt Delivery

**STURDIVANT'S**

1402 E. 1st

Ph. 3-7146

Prescriptions Called For and Delivered

**6-2148 . . . 6-0047**

**BALL DRUG STORE**

College at Federal

**PRESCRIPTIONS**

**Schiek & Liddle**

3244 E. 11th Ph. 6-2186

## PROFESSIONAL PROTECTION

Your Linens and Towels are carefully mended,  
washed and sterilized

We furnish and deliver to you garments on rental basis  
at laundry prices.

**8561 - STAR LINEN SUPPLY - 8561**

# Of Special Interest!

## NEW RADIO SERIES ON STATION KOMÉ

The Tulsa County Medical Society, through its publicity committee of which Dr. W. Albert Cook is chairman, has launched another weekly radio educational campaign during the past week, Dr. Cook announced.

Radio station KOMÉ has started a regular evening program devoted entirely to medical broadcasts made by members of the Tulsa County Medical Society. These programs—entitled **YOUR DOCTOR**—will be heard at 7 o'clock every Wednesday evening.

The committee pointed out that these programs will have exceptional educational value because they are on the air in the evening just when the listening audience is the heaviest.

Society members who will appear on KOMÉ during December are: Dr. M. D. Henley; Dr. H. Lee Farris; Dr. J. E. McDonald and Dr. James L. Miner.



Radio speakers for November were Doctors H. Lee Farris, James L. Miner, H. Lee Farris, J. E. McDonald, and A. L. Walters.

Radio speakers for December are Doctors H. Lee Farris, James L. Miner, M. V. Stanley, and Ned R. Smith.

## ASSISTANTS NEAR SECOND BIRTHDAY

November 28, 1939  
To the Medical and Dental Assistants:

We members of the Tulsa County Medical and Dental Assistants' Society will soon celebrate the second birthday of our organization. During this entire time hardly a month has passed without an increase in membership. This organization was formed exclusively for the benefit of the assistants and secretaries to the members of the Tulsa County Medical Society and Tulsa County Dental Society and this is your invitation to become one of us.

We meet regularly on the third Tuesday of each month at 6:00 o'clock in the evening for a dinner meeting in the Club Room of Michaelis Cafeteria on Boulder. The Program Committee has done a bang-up job for furnishing us with varied and worthwhile programs at every meeting. In addition to the regular meetings the Education Committee tries to supply the various wants of the members along education lines with classes, trips to different institutions in the city, etc., etc. Then there is the Social Committee with its parties, and other committees functioning for the good of the cause.

Would you not like to come and have dinner with us and then perhaps put in your application for membership. Membership dues are one dollar a year and a dollar now will pay your membership up until January 1, 1941. The charge for the dinner is fifty cents. If you wish to make a reservation for our next meeting call Edna Howell, secretary to Dr. Shipp, phone 2-4840. If you wish more information regarding the organization you may call our president, Marguerite Patterson, secretary to Dr. Miner, phone 2-9062.

Kay Holland,  
Membership and Attendance  
Committee.

(Continued from Page 10)

**Physicians and Surgeons  
Answering Service  
and Nurses Official Registry**

— — — —  
 Located in the Medical Arts Building  
 For Members of the Tulsa County  
 Medical Society Only

**MEDICAL ARTS BUILDING**  
 Let us Care for Your Phone Calls  
**DAY AND NIGHT SERVICE**

— — — —  
 All Types of Nursing Service  
 REGISTERED NURSES  
 FOR HOME, HOSPITAL AND OFFICE  
**Hourly Nursing—Day or Night**

— — — —  
 Phone 2-6242

I will soon be joining the Past President Club, but as far as I am concerned I do not intend to "let down" in my work with the Society. There are a fairly large number of Past Presidents in the Society. Most of these men have continued their interests in the activities of the Society. This is as it should be. No one knows better than a Past President the vicissitudes, rebuffs and sacrifices that a President endures.

HAIL to the New President! Let every member, whether Past President or novice, wholeheartedly support him. The accomplishments of the past year have not been brought about by any one person but by the cooperation in the activities of the Society as a whole. I know it will so continue.

Your ont-going President sincerely appreciates the sincere cooperation that he has had from all.



**"LITTLE BILL" says:**

EVERY CITY SERVED BY OKLAHOMA  
 NATURAL ENJOYS THE LOWEST GAS  
 RATES OF ANY MAJOR CITY IN THE  
 UNITED STATES.

**Good Gas Service is no accident**—it is proof of our determination to give you the best gas available—served in the most efficient manner—founded upon our own years of experience—and backed by the loyalty of our employees whose sole ambition in this—their life's work—is to serve you well.

**OKLAHOMA NATURAL**  
*Gas Company*

# Wheeler Heads Credit Bureau

Well-known credit and collection man chosen to head Medical Credit Bureau when Hoflich resigns; whole department will be given over-hauling to keep all accounts "alive".

M. A. (Jerry) Wheeler, well known credit and collection man, was elected manager of the Medical Credit Bureau by the Board of Trustees to replace Herman Hoflich who left to affiliate with an insurance agency. Wheeler, who was recommended by the Credit Bureau Committee, was placed in charge of the department on November 20 and since that time he has spent most of his time going over the accounts and bringing all collections up to date. He has installed a new system for keeping all of the accounts "alive" and coming up regularly for treatment.

Mr. Wheeler has been a resident of Tulsa for eleven years and for the past year was business manager for the Mercy Hospital. Prior to that for five years was assistant manager of the Tulsa Collection Association, thereby gaining experience and knowledge that has fitted him for the particular needs of the Medical Credit Bureau.

We are expecting larger and better collections than we have enjoyed in the past and feel certain that Mr. Wheeler is capable of delivering a dignified and diplomatic service that will reflect credit to the entire medical profession.

May we take this opportunity to impress on your minds the need for cooperation in sending in your delinquent accounts before they become too old. The older they become, the amount recoverable becomes less.

We again urge you to avail yourselves of the credit bureau service for credit information on your new patients. This service is free and we are always happy to serve you in any capacity that our ability will permit.

\* \* \*

It is very difficult to portray the scenes we experience at this office—the

many cases on relief or WPA—the large family with insufficient income—the many who must always be burdened with medical ills. This group would not be complete without the habitual debtor who refuses to pay for medical care because he could see no results from such services. It still would not be serious if it were not for the many excuses manufactured to cover up the actual reason for nonpayment of medical services.

Many are of the opinion that medical services are purchased under the same conditions as merchandise: that is, if satisfaction is not obtained the services should be returned. Inasmuch as services cannot be returned, in their estimation no charge should be made. This type of debtor presents the most difficult problem in collections today. Many collections agencies will immediately proceed with court action against this debtor regardless of the reflection on the individual physician or the entire medical profession. When this debtor enters our bureau we know immediately that it will require tact to convince him that the charge is just and must be paid.

We recognize foremost the personal relationship between the patient and the physician and encourage the patient to return to his physician. By so doing, the difficulties can often be eliminated, and a better understanding will retain that patient for the doctor.

We know that the practice of medicine is a profession, but we recognize, also, that the maintenance of the individual physician's practice is dependent to a large degree upon his diligence in the collection of his accounts.

# Professional Directory

<p style="text-align: center;"><b>VICTOR K. ALLEN, M. D.</b> Proctology 1001 Medical Arts Building Tulsa, Oklahoma</p>	<p style="text-align: center;"><b>E. RANKIN DENNY, M. D.</b> Diagnosis and Clinical Investigation Allergy 1105 Med. Arts Bldg.      Tel. 4-4444</p>
<p style="text-align: center;"><b>W. S. LARRABEE, M. D.</b> Roentgenology 411 Med. Arts Bldg.      Tel. 4-3111</p>	<p style="text-align: center;"><b>I. A. NELSON, M. D.</b> Tissue and Clinical Pathology 1107 Med. Arts Bldg.      Tel. 4-1835</p>
<p style="text-align: center;"><b>RUSSELL C. PIGFORD, M.D., F.A.C.P.</b> Internal Medicine Cardiology 1001 Med. Arts Bldg.      Tel. 5-3762</p>	<p style="text-align: center;"><b>WADE SISLER, M. D.</b> Orthopedic Surgery 807 South Elgin      Tel. 5-3132</p>
<p style="text-align: center;"><b>JOSEPH FULCHER, M. D.</b> Proctology—Urology 210 Med. Arts Bldg.      Ph. 3-4429</p>	<p style="text-align: center;"><b>L. C. NORTHRUP, M. D.</b> Surgery, Gynecology and Obstetrics 1307 S. Main      Ph. 4-5571</p>
<p style="text-align: center;"><b>A. RAY WILEY, M.D., F.A.C.S.</b> Surgery 812 Med Arts Bldg.      Ph. 3-0202</p>	<p style="text-align: center;"><b>M. J. SEARLE, M. D.</b> Pediatrics 202 Med. Arts Bldg.      Ph. 4-2901</p>
<p style="text-align: center;"><b>JOHN G. LEFTWICH, D.D.S.</b> Practice Limited to Orthodontia 803 Oklahoma Building      Ph. 4-7592</p>	<p style="text-align: center;"><b>W. ALBERT COOK, M.D.</b> Eye-Ear-Nose-and-Throat 1106 Med. Arts Bldg.      Ph. 3-6008</p>
<p style="text-align: center;"><b>RALPH A. MCGILL, M.D.</b> Surgery—Radium 1010 Med. Arts Bldg.      Ph. 4-4215</p>	<p style="text-align: center;"><b>JAMES STEVENSON, M. D.</b> Dermatology—Syphilology 615 Med. Arts Bldg.      Ph. 5-2562</p>
<p style="text-align: center;"><b>JAMES C. BROGDEN, M.D.</b> Surgery and Diagnosis 414-415 Med. Arts Bldg.      Ph. 2-2516</p>	<p style="text-align: center;"><b>FRED Y. CRONK, M.D.</b> <b>GIFFORD HENRY, M.D.</b> Diagnosis—Surgery Industrial Surgery 801 Med. Arts Bldg.      Ph. 3-5101</p>
<p style="text-align: center;"><b>MARVIN D. HENLEY, A.B., B.S., M.D.</b> Eye-Ear-Nose and Throat 911 Med. Arts Bldg.      Phone 2-6358</p>	<p style="text-align: center;"><b>HARRY GREEN, M.D.</b> Practice Limited to Diseases of the Skin 1116 Med. Arts Bldg.      Ph. 4-2326</p>

**Fat Uniformly and Completely Emulsified!**

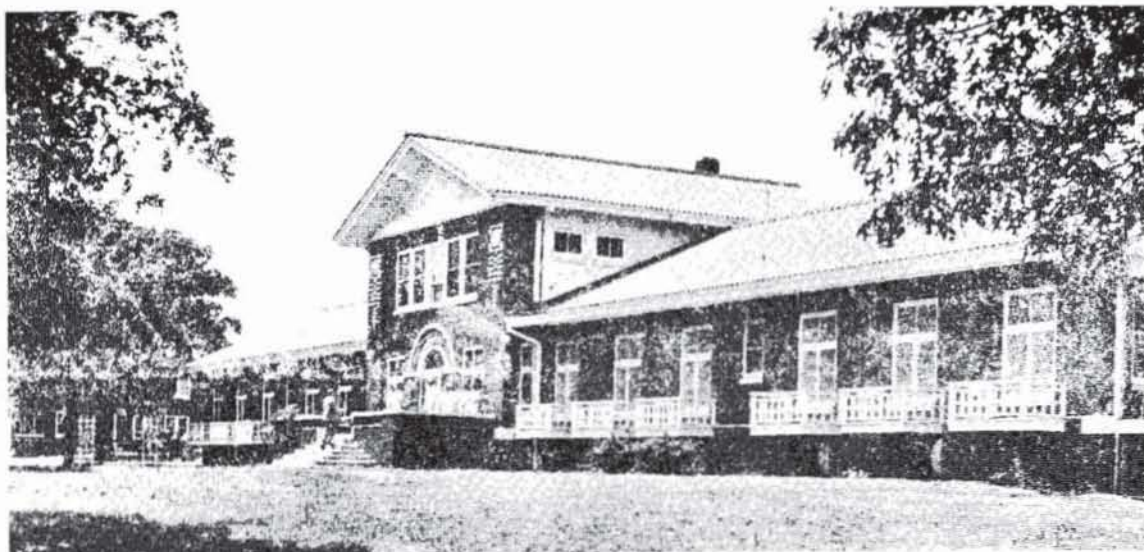
25% estimated increased exposure of protein area surface!

30% approximate increased mineral retention and absorption!

No residues provocative of fermentative or putrefactive changes!

**Superiority Proved by Clinical Experience!**

**SOFT CURD VITAMIN D**  
(Homogenized)  
**MEADOW GOLD**  
**MILK**  
**BEATRICE CREAMERY COMPANY**



**OAKWOOD SANITARIUM**

Oakwood Sanitarium is prepared to receive and care for any type of problem in the entire range of Neuro-psychiatric cases. Alcoholics and drug addicts are accepted. A completely equipped hydro-therapeutic department is maintained. Patients properly segregated for their best interests.

Inquiries cheerfully answered—Interested visitors are welcome.

*Oakwood Sanitarium is maintained and operated solely under the resident managership of Dr. Ned R. Smith for his private Neuro-psychiatric practice.*

Tulsa City office, 703 Medical Arts Bldg.

Hours, 1 to 4 by appointment.

SEC. 562, P. L. & R.

U. S. POSTAGE

**PAID**

TULSA, OKLA.  
PERMIT No. 13

(Return Postage Guaranteed)



**R. W. (BOB) HUDSON SAYS:**

If some one is sick, you're the doctor. If your supply of stationery or statements is low—I'm the doctor.

**COMMERCIAL PRINTING COMPANY**

417 East 3rd Street

Phone 2-2450

**MERKEL X-RAY CO.**

*Exclusive Distributors for—*  
Westinghouse X-Ray Equipment

Burdick and High Tension  
Physical Therapy Equipment

•  
Complete Stock  
X-Ray and Physical Therapy  
Supplies

•  
**TULSA**

612 S. Cincinnati      Tel. 2-4897

**OKLAHOMA CITY**

512 N. W. 17th      Tel. 4-2338

Wat Henry Sells

—PONTIACS—  
Most Trouble Free Car  
in the World

12th and Main      Tulsa  
111 So. Main      Sapulpa  
Delaware—Oak—Nowata

**TYPEWRITERS**

—  
With Standard and Medical Keyboards  
NEW AND RECONDITIONED

—  
**Tulsa Typewriter Company**  
Phone 8279      309 S. Boston

**G. H. GALBREATH COMPANY**

**Real Estate Loans**

We offer an attractive contract on modern residences,  
apartments and business property.

121 East Third

Phone 8104