

THE BULLETIN

OF THE TULSA COUNTY MEDICAL SOCIETY

VOL. 5

TULSA, OKLAHOMA, NOVEMBER, 1939

NO. 11

FORMAL OPENING OF CLINIC TUESDAY, NOVEMBER 14

The Tulsa County Commissioners and Members of the Tulsa County Medical Society were hosts at the formal opening of the Tulsa County Medical Clinic, 222 West Sixth St., from 7 to 10 o'clock Tuesday evening, November 14th.

The Tulsa Clinic, which is complete in every detail, was opened to the sick on November 1st and has been in operation giving relief to more than 300 persons as this publication goes to press.

In order that the public—which made the clinic possible through its interest and influence—could see just how complete the clinic facilities are, the Clinic Committee invited all civic club and other organizations, along with the general public to attend the formal opening of Tulsa's modern free clinic. More than 350 persons went through the clinic and inspected the modern facilities available for treatment of Tulsa's indigent sick.



Hundreds of TONS of DUST

fall yearly on each square mile
of large cities

A shockingly large amount of dust—literally hundreds of tons—is deposited annually over each square mile of the larger urban centers. The following figures, from independent studies made over a period of years, are not isolated examples but typical of the atmospheric pollution in large cities.¹

	Tons of dust per sq. mi. annually	} In many smaller communities even worse conditions may prevail under any of the following combinations: (1) soft coal, (2) low inland wind velocity, (3) concentrated manufacturing activity, (4) no zoning regulations, (5) no smoke abatement ordinances.
Baltimore.....	1800	
Pittsburgh.....	1031	
Salt Lake City.....	349	
Cleveland.....	780	
Washington.....	291	

It is noteworthy that even a nonindustrial city such as Washington has so high an atmospheric pollution, due mainly to smoke from residences and office buildings.

This vast amount of soot and dust cuts off light. Shrader, Coblenz, and Korff, for instance, found that the amount of ultraviolet light in Baltimore was half that 10 miles from the center of the city.¹ Under such circumstances, to rely on winter sunbaths for the treatment of rickets may prove ineffective.

a dependable antiricketic OLEUM PERCOMORPHUM

At a cost to the patient of less than 1 cent a day you can prescribe 1,000 vitamin D units of Oleum Percomorphum, a dose regarded as adequate for the prophylaxis of rickets. At no additional cost the patient receives at least 7,000 units of vitamin A. Furthermore, the natural vitamins A and D in Oleum Percomorphum are in the same ratio as in cod liver oil* but in 100 times the potency. Each gram supplies not less than 60,000 vitamin A units and 8,500 vitamin D units (U.S.P.). This means that the time-tried benefits of cod liver oil without its necessarily large dose are available even to premature and young infants, who are often most in need of antiricketic therapy. Supplied in 10 and 50 c.c. bottles and 10-drop capsules (boxes of 25 and 100).

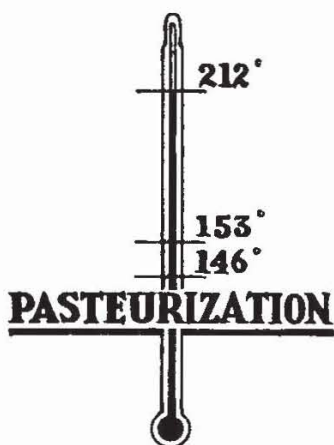
*U.S.P. Minimum Standard. ¹U.S. Public Health Bulletin No. 224.

MEAD JOHNSON & COMPANY, Evansville, Indiana, U.S.A.

Please enclose professional card when requesting samples of Mead Johnson products to cooperate in preventing their reaching unauthorized persons.

PASTEURIZED

IS Doubly SAFE
MILK



212°F. Milk Boils
185°F. Milk Scalds
160°F. Cooking Begins
145°F.
142°F.

PASTEURIZATION

139°F. Tuberculosis Killed
137°F. Typhoid and Undulant Fever Killed
134°F. Scarlet Fever, Streptococcic sore Throat and 27 Strains of Streptococci Killed
131°F. Diphtheria Killed

"As the result of several years extensive experience with commercial pasteurization and of recent researches it has been demonstrated that a temperature of 142 to 145 degrees F., with a holding period of 30 minutes, serves the purpose of protecting the public health and preserving the integrity of the milk."

M. J. Rosenau, M.D.,

"Preventive Medicine and Hygiene,"
1931 Edition

"Resolved, That the International Association of Dairy and Milk Inspectors endorses supervised holding pasteurization as the only adequate safeguard for milk supplies; and furthermore be it

"Resolved, That this Association notifies the public of the inadequacy of substitutes, or alternatives, for pasteurization."

International Association of Dairy
and Milk Inspectors.

**MEADOW GOLD
GLENCLIFF DAIRY
GOLD TOP CREAMERY**

**HAWK'S DAIRY
PURE WHITE DAIRY
QUALITY MILK CO.**

JUST WHAT THE DOCTOR ORDERED



Excellent Service

Pleasant Atmosphere

"Air Conditioned" Comfort

THE MAYO
IN TULSA

Drink
Coca-Cola
Delicious and
Refreshing

**THE
DRINK
EVERYBODY
KNOWS**



Doctor:

This is a Clapp "Starter Mocc," roomy—extreme flexibility. "Barefoot freedom with shoe protection." Send your patients where fitting is an art.

BABYLAND

14 East 6th St. Tulsa

LITERATURE AND SAMPLES SENT TO ANY INTERESTED PHYSICIAN

Recommend a Hearing Aid?

Yes! and you can refer your patients to our offices with complete confidence in the knowledge that conscientious and proper attention will be given.

The patient's hearing is first tested on the 6A Audiometer and the Audiogram is submitted to the Doctor for inspection and suggestions *before* the Audiphone is finally fitted.

Bone or air conduction instruments will be fitted as recommended by the Doctor. After the fitting, a free weekly check-up service determines if adjustments are needed.

Western Electric

BELL TELEPHONE LABORATORIES

AUDIPHONE HEARING AIDS

913 Tulsa Loan Bldg.—12 E. 4th St.

John L. Stanley, Mgr. Phone 4-8788

Accepted by

A.M.A. Council on Physical Therapy

CONTENTS

Advertisements	5
Medical Clinic Opened	7
Clinic Pictures	8
Clinic Schedule	9
President's Page	10
Medical Calendar	11
Dental Page	13
Editorials	14
Ladies Auxiliary	15
Plans for Convention	17
Of Special Interest	19

ADVERTISERS

Adams Drug	18
Audiophone Hearing Aids	5
Babyland	5
Ball Drug Store	18
Coca-Cola	4
Commercial Printing Company	24
Frates Company	16
Curtain's Prescription Laboratory	6
G. H. Galbreath Company	24
Paul Jensen Laboratories	12
Mayo Hotel	4
Meadow Gold Dairy	23
Mead Johnson and Co.	2
Medical Arts Prescription Shop	12
Medical Credit Bureau	20
Merkel X-Ray	24
Model Laundry	21
Moore's Funeral Home	6
Morningside Hospital	12
Oaklawn Sanitarium	23
Pasteurized Milk	3
Phillips 66	21
Philtower Flower Shop	6
Pontiac Motors	24
Professional Directory	22
Richmond Dental Laboratory	12
Star Linen Co.	18
Sturdivant's	18
Schiek & Liddle	18
Tulco Laboratories	12
Tulsa Typewriter Co.	24

THE PATIENTS ORDER

**The Doctor Must Be Well
Dressed.**

THE ANSWER—

A "Model" Laundered Shirt.
A "Model" Cleaned and
Pressed Suit

ALSO—

Office Coats, Nurse Uniforms
and Towels. Perfectly White
and Thoroughly Sterilized.

Model Laundry
& DRY CLEANING WORKS
3-1146

FLOWERS

Please the most
fastidious.



Let us solve your problem. We
have the finest selections for all
occasions.



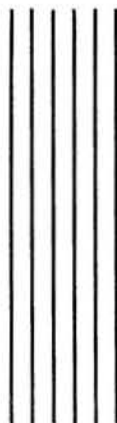
**PHILTOWER
FLOWER SHOP**

Mrs. O. L. Setterstrom

Phone 4-4843

Philtower Bldg.

FOR YOUR PROTECTION



- Quality ingredients
- Precision compounding
- A high standard of ethics

CURTAINS PRESCRIPTION LABORATORY

SIXTH AND BOULDER

PHONE 4-7116

A Strict Ethical Pharmacy in Policy and Appearance

THE BULLETIN

OF THE

TULSA COUNTY MEDICAL SOCIETY

A. Ray Wiley, M.D., *President*R. C. Pigford, M.D., *President Elect*R. Q. Atchley, M.D., *Vice-President*Roy L. Smith, M. D., *Secretary-Treasurer*LLOYD STONE, *Executive Secretary*

VOL. 5

TULSA, OKLAHOMA, NOVEMBER, 1939

NO. 11

Medical Clinic Open to Poor

November 1 sees institution, long a dream of Tulsa County Medical Society, open to the indigent sick; doctors take over job of handling county's medical problem.

Climaxing a long fight by the Tulsa County Medical Society, doors of the new county clinic swung open at 8 o'clock Wednesday morning November 1st to receive the first charity patient at 222 West Sixth street.

Shiny new paint has been spread over walls and floors, forming a spick-and-span background for the \$5,000 worth of equipment moved in Tuesday ready for the Wednesday opening. The clinic quarters were made possible by the gift of \$6,000 by Waite Phillips.

Dr. A. W. Pigford, clinic committee chairman, and his staff were on hand to launch the clinic project, expected to average over 75 patients daily at the outset. As many as 500 could be handled, it was estimated.

Ready to develop the clinic into one of the most outstanding charity projects in this section of the country, Tulsa doctors were enthusiastic over the prospects, particularly in view of the "splendid cooperation" from local groups.

Much of the present equipment has been loaned by the Tulsa school board and donated by local physicians and hospitals. Other supplies and instruments have been bought outright by the medical society.

Applicants will enter the clinic at the west entrance of the Community Fund building to the basement where they will be taken to the receiving rooms.

Their eligibility for charity medical services will be checked by the county investigators, Flay McDonald and George Bell.

Charles Dittman, druggist, has his drug stock and prescription shop quarters in the basement to dispense to the charity patients. The laboratory and X-ray quarters will also be located in the basement.

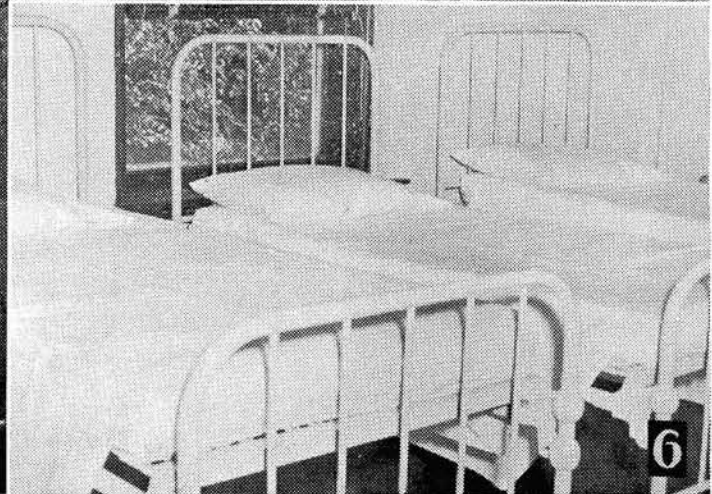
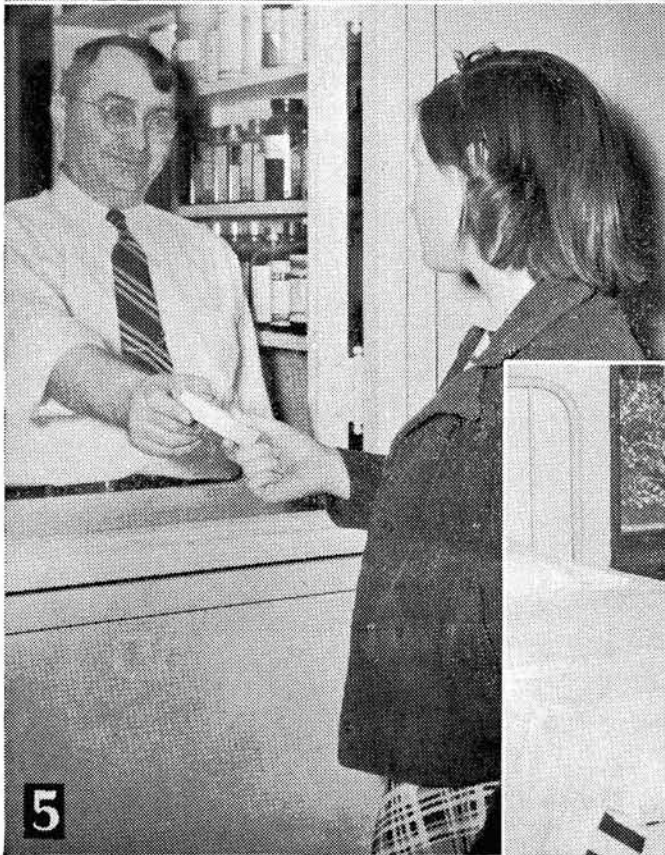
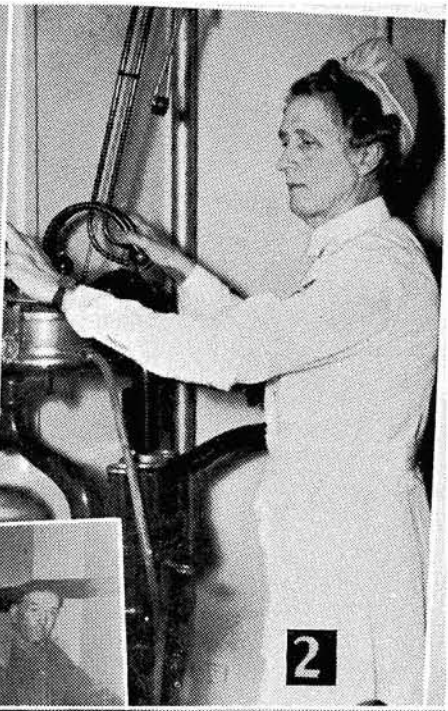
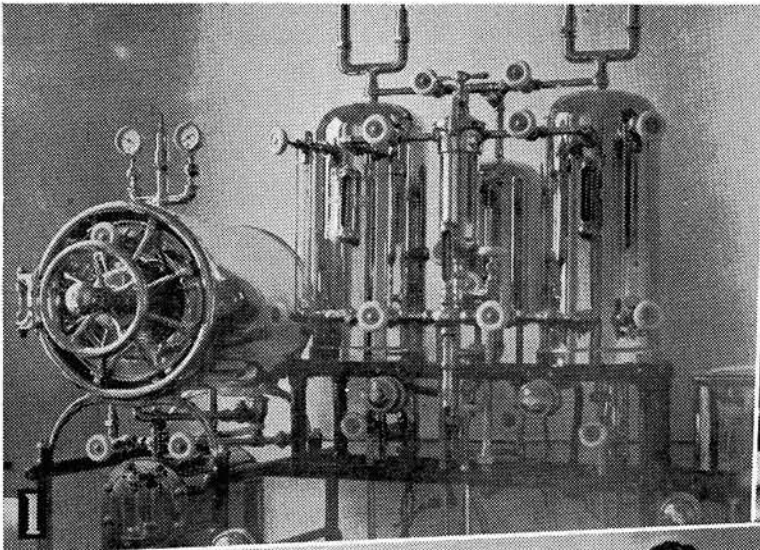
Upstairs, in some 14 units, are set up the operating room, examining rooms, two dental rooms, doctors' lockers, dark room, and the eye, ear, nose and throat division. The general departments will include medical, obstetrics and gynecology, pediatrics, skin, urology, surgery, dental, and eye, ear, nose and throat.

Minor operations will be performed in the clinic and major surgery in the

(Continued on Page 14)

PICTURES ON PAGE EIGHT

Title lines for pictures of our clinic appearing on next page: (1) Modern Hospital Autoclave and sterilizing unit. (2) Nurse Duncan in dental room. (3) Group of patients waiting to see a doctor. (4) One of first patients in medical examining room, with Dr. Branley and Rose Johnson, head nurse. (5) Charles Dittman, clinic pharmacist, hands out first prescription from drug room. (6) Section of one of the recovery rooms.



Clinic Schedule

Time	Monday	Tuesday	Wednesday	Thursday	Friday
8:30-10:00	Medicine Hosp. Surgery Urology Gynecology-Obs Dentistry	Medicine Hospital Surg. Gynecology-Obs Dentistry	Medicine Hospital Surgery Urology Gynecology-Obs Dentistry	Medicine Hospital Surgery Gynecology-Obs Dentistry	Medicine Hosp. Surgery Urology Gynecology-Obs Dentistry
10:00-11:00	Medicine Pediatrics Gynecology-Obs Urology Proctology	Medicine Pediatrics Gynecology-Obs Venereal-Colored	Medicine Pediatrics Gynecology-Obs Urology	Medicine Pediatrics Gynecology-Obs	Medicine Pediatrics Gynecology-Obs Urology Proctology
11:00-12:00	Pediatrics Clinic Surgery	Pediatrics Clinic Surgery Neurology Venereal-Colored	Pediatrics Clinic Surgery	Pediatrics Clinic Surgery	Pediatrics Clinic Surgery Neurology
12:00-1:00					
1:00-2:00	Eye-Ear-Nose	Dermatology Syphilology Venereal-White	Eye-Ear-Nose	Venereal-White	Eye-Ear-Nose Dermatology Syphilology Venereal-Colored
2:00-3:00	Eye-Ear-Nose		Eye-Ear-Nose		Eye-Ear-Nose
3:00-4:00					

No Clinic on Saturday

*Syphilis Clinic for White Thursday 8:30 at 521 North Boulder.
Syphilis Clinic for Colored Tuesday and Friday 8:30 a.m. at 521 North Boulder*

PRESIDENT'S PAGE

There is a great deal of concern right now on the question of America participating in this Second World War. At the present time public opinion is definitely against America becoming involved. However, I listened recently to Mr. Howard Coonley, President, National Association of Manufacturers, talking to a small group of business men, say that he recently was called to Washington. After conferences with some of the business leaders of America he came away with a definite feeling that as far as Washington was concerned, it was not a question of whether the United States would enter the war with the Allies, but just how soon. Mr. Coonley is not the first one to report this same feeling in Washington. Apparently the capital is moving in rhythm as though the matter was settled. There is a strong undercurrent that the Administration has definitely committed the United States to enter. If this be true there is grave danger and God forbid this to happen. Quoting again from Mr. Coonley. "Should America go through another war we will come out with all those privileges gone that our pioneer forefathers held most dear. The ideas they fought to establish in America, freedom of speech, freedom of worship, a free franchise and all those attributes in the Bill of Rights held most sacred in America will be gone. There will be a changed philosophy and an ideology implanted whose ideals and ideas are the very antithesis of America of today."

I do not know how Mr. Coonley knows these changes will be inevitable, but I have deep respect for his opinion. I do know that such has been the recent history of Europe in many instances.

How will this effect the Medical Profession? Shall we go into any horrid details about losses, sacrifices, regimentation of medicine and lowering standards, both in the practice and home life? No, you can see the pic-

(Continued on Page 14)



President

Medical Calendar

WEDNESDAY, November 1st:

Radio Broadcast at 4:30 p.m. Station KTUL. Dr. H. Lee Farris.

MONDAY, November 6th:

Mercy Hospital Staff Meeting.

TUESDAY, November 7th:

Mercy Hospital Staff Meeting.

WEDNESDAY, November 8th:

Radio Broadcast at 4:30 p.m. Station KTUL. Dr. J. L. Miner.

MONDAY, November 13th:

Tulsa County Medical Society Meeting, at 8:00 p.m. at Junior Ballroom Mayo Hotel. Program: Symposium on Cancer by Tulsa Cancer Society.

TUESDAY, November 14th:

Meeting of District No. Two of the Oklahoma State Nurses Association. 1202 Medical Arts Bldg., 7:30 p.m.

WEDNESDAY, November 15th:

Radio Broadcast at 4:30 p.m. Station KTUL. Dr. H. Lee Farris.

MONDAY, November 20th:

St. Johns Staff Meeting.

TUESDAY, November 21st:

Office Assistants Meeting, Michaelis Cafeteria at 6:00 p.m.
Flower Hospital Staff Meeting.

WEDNESDAY, November 22nd:

Radio Broadcast at 4:30 p.m. Station KTUL. Dr. J. E. McDonald.

MONDAY, November 27th:

Tulsa County Medical Society meeting, at 8:00 p.m.—16th floor Mayo Hotel. Program: Subject unannounced.

WEDNESDAY, November 29th:

Radio Broadcast at 4:30 p.m. Station KTUL. Dr. A. L. Walters.



MORNINGSIDE HOSPITAL

*One of Oklahoma's
finer hospitals*

1653 East Twelfth St.

Telephone 3-2131

TULSA, OKLAHOMA

AT YOUR SERVICE

*One of the largest stocks of prescription Drugs
in Oklahoma*

Our three way check system prevents mistakes.

Our fast turn over gives you fresh Drugs.

Our buying power gives the best price.

All work is handled by competent registered
Pharmacists.

We give your patient what you prescribe.

MEDICAL ARTS PRESCRIPTION SHOP

Medical Arts Building — Tulsa, Okla.

Phone 4-0121

A GOLD CASTING
By
THERMOTROL
RICHMOND
DENTAL LABORATORIES

314-15 Ritz Building
Phone 4-0745

DOCTOR . . .

The high esteem with which your patients regard you has been won by your steadfast determination to supply them with products of determined worth.

FOR ALL TYPES OF
LABORATORY SERVICE CALL
PAUL M. JENSEN
211 Medical Arts Bldg. Tel. 4-3320

TULCO
TOOTH POWDER
and
TOOTH BRUSHES

*Teeth don't stay clean — you
have to keep them that way.*

TULCO LABORATORIES
1113 Medical Arts Bldg.

**MOUTH PERSONALITY
IS DENTAL SUBJECT**

Outstanding Speakers Will
Discuss New Hollywood
Trends Here

Cavities, extractions and other routine subjects of dentistry will give way to such items as personality, facial beauty and success in Hollywood with at least one speaker at the Northern District Dental society convention to be held in Tulsa Thursday, Friday and Saturday, November 18, 19 and 20.

He is Dr. J. V. Brown of Kansas City, who has lectured widely on the effect which dentistry has on facial expression and beauty. He calls the mouth the "portal of personality," because when a person speaks, the sound comes from his mouth and the attention of his listeners naturally is focused on the point from which the sound emanates.

In his discussions here, he will describe recent advances in the field of dentistry. Among these is the resurfacing of natural teeth with porcelain, replacing the original enamel.

Tulsa also will furnish a principal speaker for the program, Dr. W. D. Rush, who will discuss the research work he has been doing for the past several months in connection with the United States bureau of standards on amalgam fillings. Doctor Rush was a captain in the dental corps in the army and is a past president of the Tulsa and the district dental societies.

The BULLETINEditorial
Committee

J. F. BOLTON, M. D.,
Chairman.
LOGAN SPANN, M. D.
F. L. UNDERWOOD, M. D.

Managing Editor LLOYD STONE



Published monthly on the 3rd day of each month, at the executive offices of the Tulsa County Medical Society, 1202 Medical Arts Building, Tulsa, Oklahoma.

VOL. 5 NOVEMBER, 1939 No. 11

(Continued from Page 10)

ture and do your own elaborating. You may say, "What can I do about it?" Everyone can do much. Public opinion can direct a nation. A doctor's opinion is always respected, medically or otherwise. Think Clearly. Do not be misguided by selfish propoganda. Remember Wilson was elected on the promise of Keeping America Out of War, but less than six months later we declared war. Shall this happen again?

I have a copy on my desk of a letter to the directors of the Tulsa Chamber of Commerce written by W. Gibson Carey, Jr., President, Chamber of Commerce of the United States, from which I want to quote. "We business men, as all others, are aghast at the prospect of slaughter and misery abroad. We wish no profit advantage through the wrecking of great cultural and spiritual values which have been built painfully and slowly through generations of thought and effort. We want peace in the world."

"In order to fulfill our destiny nobly, we must solve our domestic problems. We are apt to forget that we ourselves are not at war and that, God willing, we shall avoid such a

catastrophe. The essential thing is for us to build our national strength on self-discipline, productivity and good will. This is the time for maximum effort, great tolerance and fervent prayer."

A. Ray Wiley, M. D., Tulsa.

CLINIC OPENS

(Continued from Page 7)

hospitals by members of the surgical staff. Tulsa physicians have volunteered to assist with all this work with a "rotating staff."

In addition to a long list of doctors who will work at the clinic, Dr. J. C. Brogden, member of the clinic committee, who is head of surgery, announced the following doctors to serve at the hospitals during November:

St. John's—Dr. Fred A. Glass, chief surgeon, with Dr. R. B. Witcher and Dr. Roy L. Smith. Morninside—Dr. H. D. Murdock, chief, with Dr. O. C. Armstrong and Dr. S. E. Franklin. Tulsa General—Dr. H. Lee Farris, chief, with Dr. H. J. Black and Dr. W. H. Calhoun. Flower—Dr. N. Stuart White and Dr. Eric M. White.

The regular staff at the clinic will be Doctor Beesley, and his assistant, Dr. J. Jeff Billington; Dittman, pharmacist, and these nurses, Rose Johnson, head nurse; Mrs. Pearl Bredahl, Mrs. B. Mae Duncan and Miss Isabell Davis.

The first patient received was 12-year-old Bertha Comer of Garden City, the next Neltha Rist, 1555 North Peoria Ave.

Two shipments of drugs were on hand as the clinic opened and Charles Dittman, county pharmacist, said prescriptions were being filled on schedule. Patients received were given cards by Miss Maurine Calhoun, assistant to the executive secretary of the medical society, who will work in the clinic reception room.

Auxiliary Starts Hygeia Drive

Mrs. James Stevenson, president, names committee for ensuing year; Mrs. Leon Stuart heads campaign in magazine drive; Mrs. Walter Larrabee named chairman of 1940 convention committee.

Opening a drive for a record sale of Hygeia Magazine in Tulsa this fall, the Women's Auxiliary of the Tulsa County Medical Society is laying plans for a most active year, Mrs. James Stevenson, president, said in announcing her committee heads and assistants.

In preparing for the Hygeia campaign, Mrs. Leon H. Stuart and her committee is making a survey of all the physicians' offices to make certain that the profession is represented 100 per cent. A special price has been arranged for all doctors to secure their magazine for the coming year at approximately half price. Special rates for group subscriptions have also been announced.

Work for the year was started with the first meeting in the home of Mrs. Hugh Perry. Mrs. Hugh Evans and other members of her Social Committee were in charge of arrangements.

Officers for the coming years are: President, Mrs. James Stevenson; President-Elect, Mrs. J. W. Rogers; Vice-President, Mrs. John Perry; Recording Secretary, Mrs. W. S. Larrabee; Corresponding Secretary, Mrs. Fred E. Woodson; Treasurer, Mrs. Logan A. Spann; Historian, Mrs. D. M. MacDonald and Parliamentarian, Mrs. T. H. West.

Committee appointments follow:

Program and Health Education Committee: Mrs. H. Lee Farris, chairman; Mrs. C. C. Hoke, Mrs. Thomas H. Davis, Mrs. W. R. R. Loney and Mrs. D. W. LeMaster.

Membership Committee: Mrs. John C. Perry, chairman; Mrs. James L. Miner, Mrs. Chester A. Pavy and Mrs. A. H. Ungerman.

Social Committee: Mrs. Hugh J. Evans, chairman; Mrs. N. S. White, Mrs. A. Ray Wiley, Mrs. K. C. Reese, Mrs. E. Rankin Denny, Mrs.

W. D. Hoover, Mrs. Charles H. Eads, Mrs. Harry P. Price, Mrs. W. J. Trainor, Mrs. Horace P. Porter, Mrs. Frank Stuart and Mrs. Marvin D. Henley.

Philanthropic Committee: Mrs. D. L. Garrett, chairman; Mrs. M. B. Lhevine, Mrs. A. W. Roth, Mrs. Paul Grosshart, Mrs. Allen C. Kramer, Mrs. J. O. Lowe, Mrs. J. C. Peden, Mrs. L. C. Northrup, Mrs. W. A. Dean, Mrs. P. M. Shreck and Mrs. J. E. Wallace.

Publicity Committee: Mrs. J. W. Rogers, chairman.

Hygeia Committee: Mrs. Leon H. Stuart, chairman; Mrs. S. J. Bradfield, Mrs. J. D. Markland, Mrs. Carl F. Simpson, Mrs. F. L. Underwood, Mrs. W. R. Turnbow, Mrs. A. W. Pigford, Mrs. R. G. Ray and Mrs. Ned R. Smith.

Public Relations Committee: Mrs. Hugh Perry, chairman; Mrs. H. A. Ruprecht, Mrs. Hugh Graham, Mrs. Robert B. Witcher, Mrs. Frank J. Nelson, Mrs. F. D. Sinclair, Mrs. Donald L. Mishler and Mrs. Charles H. Haralson.

Courtesy Committee: Mrs. J. W. Childs, chairman.

Legislative Committee: Mrs. Frank L. Flack, chairman.

Telephone Committee: Mrs. G. R. Russell, chairman; Mrs. Carl Hotz, Mrs. Joseph Fulcher, Mrs. D. J. Underwood, Mrs. H. W. Ford, Mrs. George R. Osborn, Mrs. K. F. Swanson, Mrs. E. O. Johnson, Mrs. W. A. Showman, Mrs. A. H. Ungerman, Mrs. B. W. Ward, Mrs. F. L. Nelson and Mrs. W. A. Walker.

State Convention Committee: Mrs. Walter S. Larrabee, chairman.

THE HOUSTON FIRE & CASUALTY COMPANY

presents the

OKLAHOMA GROUP POLICY

For Physicians and Surgeons' Liability Insurance

1. PROVIDES: Every protection is given in this policy that is provided in any other policy issued in this state. It contains every standard provision in addition to other advantages.
2. PROVIDES: A \$25,000.00 protection against any one claim and \$40,000.00 against all claims during any one year.
3. PROVIDES: A Group Policy tailor-made for physicians and surgeons who are members of State Association and their respective County Societies at the time their applications are made.
4. PROVIDES: Unusual protection by allowing the Medical Society to choose its own trial attorney and attorneys to handle all claim adjustment.
5. PROVIDES: Authority for claims adjuster to make actual cash settlements direct.
6. PROVIDES: All the protection of the Houston Fire and Casualty Insurance Company plus all the resources of an adequate reinsurance program.
7. PROVIDES: The extra facilities of one of the large general agencies in the southwest, THE FRATES COMPANY, operated by Ben Voth and Paul Sisk.
8. PROVIDES: This complete insurance protection at the lowest rate ever offered to physicians and surgeons in Oklahoma, due to the large number to be covered under the single group and the restriction to Society Members only.
9. PROVIDES: A reducing scale of premium rates based upon the number of doctors insured and the total amount of claim losses, making the insurance practically on a "cost-plus" basis with a set maximum.
10. PROVIDES: The additional convenience of handling all insurance questions and problems directly by the doctors through the Executive Secretary who will act as liason between the Insuring Company, the General Agency, the attorneys and the County and State Medical Societies.

Address All Inquiries To:

(PAUL) (BEN)
SISK & VOTH
OPERATING AS
THE FRATES CO.



219 Philcade
Phone 2-6116
TULSA,
OKLAHOMA

Work Started on 1940 Convention

Dr. M. J. Searle is appointed chairman at meeting of state and local medical officials; exhibits will be largest in history; Scientific speakers selected.

Plans for making the 1940 convention of the Oklahoma State Medical Association, not only the largest, but the finest ever held in the history of the organization were launched in Tulsa two weeks ago when leaders of the state association met with Tulsa leaders.

A number of suggestions were discussed and arrangements approved which will add a great deal of interest to the 1940 meeting which will be held here May 6-7-8. Attending this meeting were Dr. A. W. Howard of Chelsea, president of the Oklahoma State Medical Association; Dr. L. S. Willour of McAlester, secretary of the state organizations; R. H. Graham, State Executive Secretary, of Oklahoma City, who met with Dr. A. Ray Wiley, Dr. P. P. Nesbitt, Dr. James Stevenson and Dr. Russell Pigford all of Tulsa.

Dr. Maurice J. Searle was unanimously elected chairman of the General Convention Committee upon nomination of Dr. Howard. Dr. Searle and his various committee chairmen and members will have complete charge of the arrangements for the 1940 meeting which will have its headquarters in the Mayo Hotel. Dr. Searle was called to the meeting and he announced he would name the members of his various committees immediately and start work on the job of making the next convention the best.

The committee discussed invitations to be sent to guest speakers and their identity will be announced from the state offices just as soon as the invitations have been accepted and the list of speakers completed.

Another innovation which was discussed and will add a new bit of variety to the three-day program. Frank Phillips and the Phillips Petroleum Com-

pany extended an invitation through the Tulsa Doctors to all convention visitors to attend a barbecue dinner to be given at his Wooleroc Lodge near Bartlesville on the opening day of the convention. It is quite probable that the invitation will be accepted and plans made for playing the state golf tournament at the Hilcrest Club course in Bartlesville for those who wish to go to Bartlesville for the barbecue. All wives and other relatives are invited to attend the Wooleroc party with their husbands. The dinner will be held early in the afternoon to allow members of the House of Delegates time to return to Tulsa for the opening meeting Monday night.

It is probable that an open-forum meeting may be open to the public on one of the nights before the installation of the new officers. These plans are nebulous at present. Another innovation discussed will be group luncheons held at noon on Tuesday and Wednesday of the convention.

Lloyd Stone and R. H. Graham announced that they had secured a large list of national manufacturers who want to show commercial exhibits in Oklahoma for the first time. With contracts already signed by twelve outstanding firms, it is certain that the commercial exhibits will be the most outstanding ever shown in Oklahoma. The Scientific Exhibits are to be given special attention and this year they will be outstanding.

FAST THINKING

Mrs. McTavish (looking out window): Sandy, here comes company for supper.

McTavish: Quick, everybody run out on the porch with a toothpick!

THOUGHTFUL PEOPLE



You know the value of having your prescription compounded correctly. Our duty is to cooperate with physicians and supply their wants, as well as those of their patients, with the best materials available.

Prescription service is the heart of our business. It sets the standard of our many services. We feature prescriptions and use the utmost care in compounding them, and employ the best available pharmacists.

When Your Favorite Druggist is busy

Phone Us Your

PRESCRIPTIONS

4-7167

ADAMS DRUG

Prescription Specialists

1624 East Eleventh Street

Prescriptions Called For and Delivered

6-2148 . . . 6-0047

BALL DRUG STORE

College at Federal

PHONE US

Your Prescriptions For Accurate

Service and Prompt Delivery

STURDIVANT'S

1402 E. 1st

Ph. 3-7146

PRESCRIPTIONS

Schiek & Liddle

3244 E. 11th Ph. 6-2186

PROFESSIONAL PROTECTION

Your Linens and Towels are carefully mended,
washed and sterilized

We furnish and deliver to you garments on rental basis
at laundry prices.

8561 - STAR LINEN SUPPLY - 8561

Of Special Interest!

FOR THE BULLETIN

Members of the State Society who wish to have papers for the State Meeting to be held May 6, (or sometime) would kindly furnish a title and a synopsis of their paper prior to January 15 as all papers to be read for the State Society Meeting must be in by that day. Send to Dr. J. E. McDonald.

Tulsa County Medical Society
Tulsa, Oklahoma

Dear Mr. Stone:

Our Mr. Seibel and Mr. Beegle informs me of the progressive step you have taken in establishing the County Clinic and I would like to take this opportunity to congratulate you on this very humanitarian movement of the Tulsa County physicians.

Mr. Seibel and Mr. Beegle tell me they called upon you—went through your clinic, and left you a small stock of Cerophyl. The Cerophyl Laboratories are proud of the opportunity to do this small bit in such an unselfish movement, and we sincerely hope that your progressive step may start many other similar projects.

Yours very truly,

L. H. SMITH,
President.

LHS:h

* * *



RADIO SPEAKERS FOR LAST MONTH WERE: Dr. A. L. Walters; Dr. J. L. Miner; Dr. Mont Stanley

and Dr. H. Lee Farris.

RADIO SPEAKERS FOR NOVEMBER ARE: Dr. H. Lee Farris; Dr. J. L. Miner; Dr. H. Lee Farris; Dr. J. E. McDonald; and Dr. A. L. Walters.

MEDICAL-DENTAL GOLF TOURNAMENT

Plans for the Medical-Dental golf tournament which will be held at Indian Hills Country Club, Thursday, November 9, have been completed and arrangements have been made to take care of a large crowd of golfers, according to Dr. R. Q. Atchley, chairman of the Medical Society Golf Committee.

The annual golf tournament will get under way shortly after noon and will be followed in the evening by a dinner in the club rooms. Prizes for the winners will be awarded following the dinner.

(Continued on Page 21)

Physicians and Surgeons Answering Service and Nurses Official Registry

Located in the Medical Arts Building
For Members of the Tulsa County
Medical Society Only

MEDICAL ARTS BUILDING

Let us Care for Your Phone Calls
DAY AND NIGHT SERVICE

All Types of Nursing Service
REGISTERED NURSES
FOR HOME, HOSPITAL AND OFFICE
Hourly Nursing—Day or Night

Phone 2-6242

*Did you get
any part of this
twelve thousand dollars?*

The Medical Credit Bureau of the Tulsa County Medical Society has collected more than \$12,900.00 for its members from old and delinquent accounts, during the first nine months of 1939. This is more than \$1,200 per month.

January	\$1,382.40
February	\$1,155.02
March	\$1,708.14
April	\$1,531.46
May	\$1,801.87
June	\$1,165.68
July	\$1,534.45
August	\$1,423.60
September	\$1,260.33

Nine Months Total \$12,962.95

If you haven't received your share, it is because you do not have your accounts listed for collection with the Medical Credit Bureau.

MEDICAL CREDIT BUREAU

A Unit of

Tulsa County Medical Society

1202 Medical Arts Bldg.

Phone 4-8161

your Golf Tournament possible by their prize contributions:

Morningside Hospital.
 Medical Arts Prescription Shop.
 Roy Getman Drug.
 Lincoln Drug Store.
 Tulsa General Hospital.
 Flower Hospital.
 Haas Dental Laboratories.
 Hettinger Brothers.
 Paul M. Jenson Dental Laboratories.
 Fitzgerald Funeral Home.
 American Optical Company.
 Medical Arts Building.
 Riggs Optical Company.
 Beatrice Creamery.
 Brownies Lunch No. 3.
 J. C. Penny Company.
 Grant G. Forsythe, Inc.
 Curtain Prescription Laboratories.
 Mr. Dahlman.

Voluntarily, we market only Council-Accepted products because we have faith in the principles for which the Council on Pharmacy and Chemistry (and the Council on Foods) stand, reminds a bulletin sent out by the Mead-Johnson Company.

We have witnessed the three decades during which the Council has brought order out of chaos in the pharmaceutical field. For over thirty years it has stood—alone and unafraid—between the medical profession and unprincipled makers of proprietary preparations.

The Council verifies the composition and analysis of products, and substantiates the claims of manufacturers. By standardizing nomenclature and disapproving therapeutically suggestive trade names, it discourages shotgun therapy and self-medication. It is the only body representing the medical profession that checks inaccurate and unwarranted claims on circulars and advertising as well as on packages and labels.

The Council cooperates, through the N. N. R. and in other ways, with the U. S. pharmacopoeia Board, testing and evaluating scores of new products which appear during the 10-year interim between Pharmacopoeial revisions.

We are conscious of the fact that the

(Continued from Page 19)

Council has at times been criticized both in and out of the medical profession. We hold no brief for perfection in any human agency. But we subscribe to the fact that the work of the Council is sound in principle; and in this high-pressure day and age, we shudder to think of a return to the proprietary-medicine-quack-nostrom conditions of over thirty years ago, when there was Babel instead of Council.

INVENTORY TIME FOR YOUR ACCOUNT

The first of the year is a good time to take inventory of your accounts. If an analysis discloses that many notices have brought no response or there seems to be no information available as to the creditors' whereabouts, it is time that something should be done about it.

We suggest to you that your Bureau can be of help to you in this situation. It is well known among credit men that no accounts deteriorate so rapidly as do physicians' bills. Perhaps this is due to the failure of the doctor himself to bill his patients promptly. Of course, there are many other factors. Whatever the cause, ordinarily there is no reason why physicians should not be paid on the same basis as anyone else. It would seem to be the responsibility of every medical man to educate the public in this regard.

Remember, your Bureau stands ready to be of assistance to you any time.

These are the business firms who made



**Free
Parking
For
Doctors**

CHICK WOODARD

Appreciates Your Business

Cars Delivered On Call

7th and Cheyenne — Phone 4-7033

Professional Directory

VICTOR K. ALLEN, M. D.
 Proctology
 1001 Medical Arts Building
 Tulsa, Oklahoma

E. RANKIN DENNY, M. D.
 Diagnosis and Clinical Investigation
 Allergy
 1105 Med. Arts Bldg. Tel. 4-4444

W. S. LARRABEE, M. D.
 Roentgenology
 411 Med. Arts Bldg. Tel. 4-3111

I. A. NELSON, M. D.
 Tissue and Clinical Pathology
 1107 Med. Arts Bldg. Tel. 4-1835

RUSSELL C. PIGFORD, M.D., F.A.C.P.
 Internal Medicine
 Cardiology
 1001 Med. Arts Bldg. Tel. 5-3762

WADE SISLER, M. D.
 Orthopedic Surgery
 807 South Elgin Tel. 5-3132

JOSEPH FULCHER, M. D.
 Proctology—Urology
 210 Med. Arts Bldg. Ph. 3-4429

L. C. NORTHRUP, M. D.
 Surgery, Gynecology and Obstetrics
 1307 S. Main Ph. 4-5571

A. RAY WILEY, M.D., F.A.C.S.
 Surgery
 812 Med Arts Bldg. Ph. 3-0202

M. J. SEARLE, M. D.
 Pediatrics
 202 Med. Arts Bldg. Ph. 4-2901

JOHN G. LEFTWICH, D.D.S.
 Practice Limited to Orthodontia
 317 McBirney Building Ph. 4-7592

W. ALBERT COOK, M.D.
 Eye-Ear-Nose-and-Throat
 1106 Med. Arts Bldg. Ph. 3-6008

RALPH A. MCGILL, M.D.
 Surgery—Radium
 1010 Med. Arts Bldg. Ph. 4-4215

JAMES STEVENSON, M. D.
 Dermatology—Syphilology
 615 Med. Arts Bldg. Ph. 5-2562

JAMES C. BROGDEN, M.D.
 Surgery and Diagnosis
 414-415 Med. Arts Bldg. Ph. 2-2516

FRED Y. CRONK, M.D.
GIFFORD HENRY, M.D.
 Diagnosis—Surgery
 Industrial Surgery
 801 Med. Arts Bldg. Ph. 3-5101

MARVIN D. HENLEY, A.B., B.S., M.D.
 Eye-Ear-Nose and Throat
 911 Med. Arts Bldg. Phone 2-6358

HARRY GREEN, M.D.
 Practice Limited to Diseases of the Skin
 1116 Med. Arts Bldg. Ph. 4-2326

Fat Uniformly and Completely Emulsified!

25% estimated increased exposure of protein area surface!

30% approximate increased mineral retention and absorption!

No residues provocative of fermentative or putrefactive changes!

Superiority Proved by Clinical Experience!

SOFT CURD VITAMIN D

(Homogenized)

**MEADOW GOLD
MILK**

BEATRICE CREAMERY COMPANY



OAKWOOD SANITARIUM

Oakwood Sanitarium is prepared to receive and care for any type of problem in the entire range of Neuro-psychiatric cases. Alcoholics and drug addicts are accepted. A completely equipped hydro-therapeutic department is maintained. Patients properly segregated for their best interests.

Inquiries cheerfully answered—Interested visitors are welcome.

Oakwood Sanitarium is maintained and operated solely under the resident managership of Dr. Ned R. Smith for his private Neuro-psychiatric practice.

Tulsa City office, 703 Medical Arts Bldg.

Hours, 1 to 4 by appointment.

SEC. 562, P. L. & R.

U. S. POSTAGE

PAID

TULSA, OKLA.
PERMIT No. 13

(Return Postage Guaranteed)



R. W. (BOB) HUDSON SAYS:

If some one is sick, you're the doctor. If your supply of stationery or statements is low—I'm the doctor.

COMMERCIAL PRINTING COMPANY

417 East 3rd Street

Phone 2-2450

MERKEL X-RAY CO.

Exclusive Distributors for—

Westinghouse X-Ray Equipment

Burdick and High Tension
Physical Therapy Equipment

•
Complete Stock
X-Ray and Physical Therapy
Supplies

•
TULSA

612 S. Cincinnati Tel. 2-4897

OKLAHOMA CITY

512 N. W. 17th Tel. 4-2338

Wat Henry Sells

—PONTIACS—
Most Trouble Free Car
in the World

12th and Main

111 So. Main

Tulsa

Sapulpa

Delaware—Oak—Nowata

TYPEWRITERS

With Standard and Medical Keyboards
NEW AND RECONDITIONED

Tulsa Typewriter Company
Phone 8279 309 S. Boston

G. H. GALBREATH COMPANY

Real Estate Loans

We offer an attractive contract on modern residences,
apartments and business property.

121 East Third

Phone 8104