

SANDHILLS FIELD AREA WCAB MAP



OU
THESIS
APP
APP 2
7-2080

EXXON COMPANY USA
PRODUCTION DEPARTMENT
MIDLAND PRODUCTION ORGANIZATION
RESERVOIR MANAGEMENT OPPORTUNITIES

SANDHILLS FIELD AREA CONTOUR MAP
CRANE COUNTY, TEXAS
ONLY SELECTED WELLS SHOWN
WCAB MAP
CINT=20 GINT=600
ANNOTATIONS: WELL NUMBER, REFNO, VALUE, COMMENT
PROD.MID.MODEL.SANDHILLS.DEVELOP.APLC(QUICKMAP) 8:01

0 2000 FEET SCALE=2000 FEET/INCH
G.J. APPLETON AUGUST 5, 1996

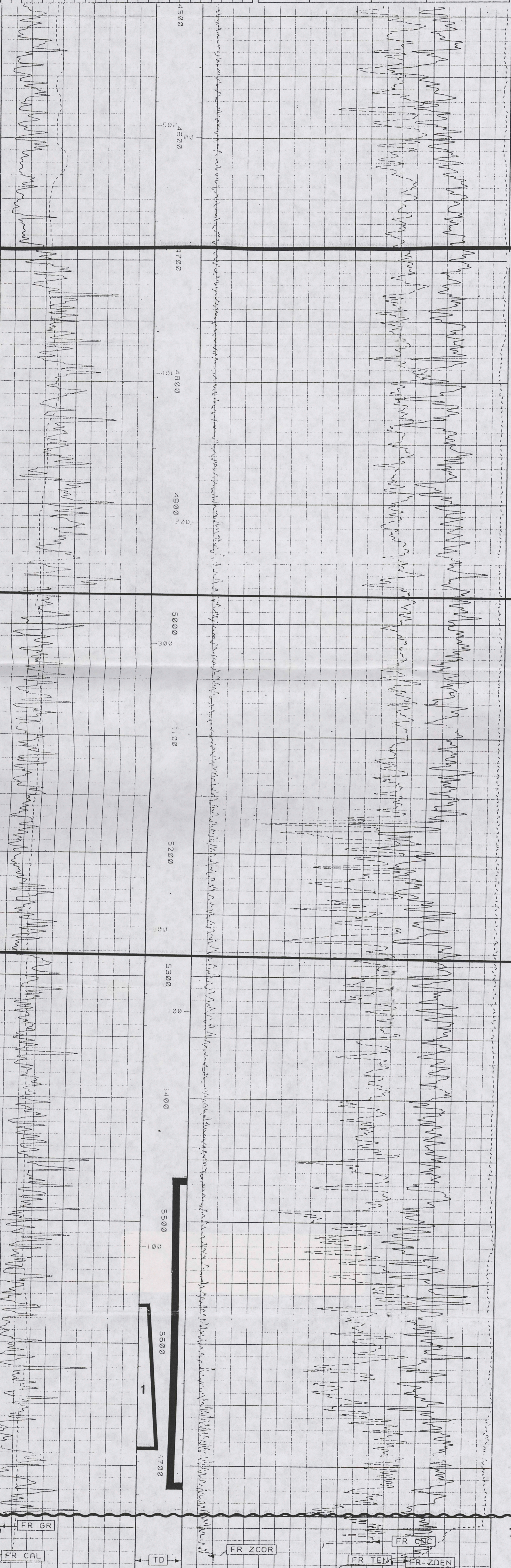
OU
THESES
APP
COP 2

EXXON WELL NO. I-1 J.B.TUBB



COMPENSATED Z-DENS LOG
COMPENSATED NEUTRON LOG
GAMMA RAY LOG
CALIPER LOG

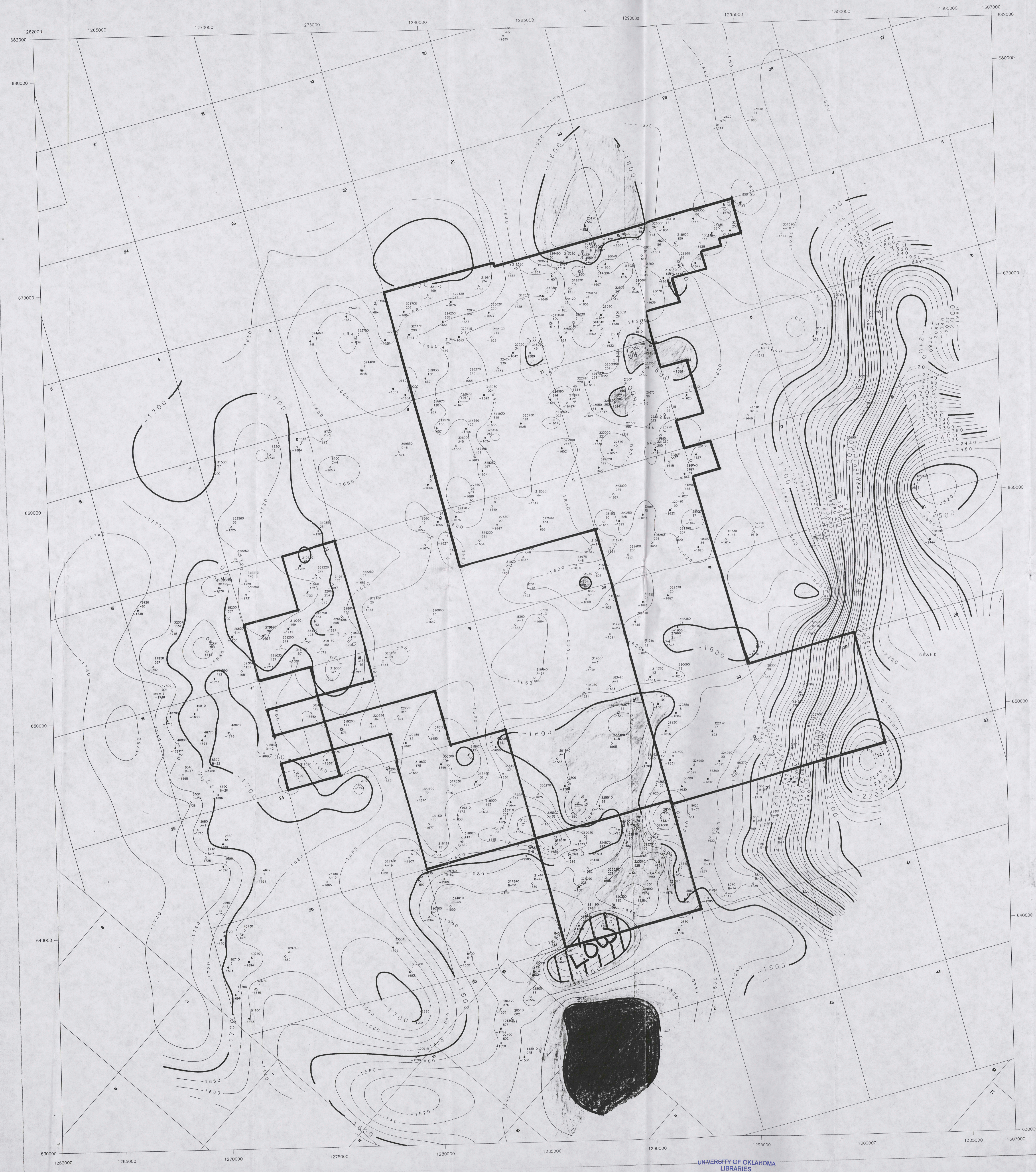
FILE NO.	42-03-3833	COMPANY	MOBIL EXPLORATION & PRODUCTION U.S. INC.
API NO.	42-03-3833	WELL	J.B. TUBB "I" NO. 1
FIELD	SEMP HILLS (ELLENBURGER)	COUNTY	CRANE
STATE	TEXAS	OTHER SERVICES	RT/M/L/GR AC/D/ST/LL CELL DE/LZ
FIELD PRINT	LOCATION: 2287 FSL & 1887 FAL BLOCK 32 SECTION 5 FSL SURVEY	ELEVATIONS	KA 2528 FT DF 2619 FT CL 2887 FT
PERMANENT DATUM	G.L. ELEVATION 2887 FT	LOC. MEASURED FROM	13 FT ABOVE P.D.
DRILL MEAS. FROM	K.B.		CL 2887 FT
DATE	02 JANUARY 1986		
LOG NO.	105852		
SERVICE ORDER			
DEPTH DRILLER	5778 FT		
DEPTH LOGGED	5777 FT		
BOTTOM LOGGED INTERVAL	4580 FT - 5321 FT		
CASING - DRILLER	5321 IN @ 53 FT		
CASING LOGGER	5321 IN		
TYPE OF FLUID IN HOLE	STEARAZO/DC1		
DENSITY / VISCOSITY	10.18 LB/G		
PH	9.8		
SOURCE OF SAMPLE	FC/LINE		
RM AT MEAS. TEMP.	9.87 21MM @ 54 DEGS		
RM AT MEAS. TEMP.	9.87 21MM @ 54 DEGS		
RM AT MEAS. TEMP.	9.87 21MM @ 54 DEGS		
RM AT MEAS. TEMP.	9.87 21MM @ 54 DEGS		
TIME SINCE CIRCULATION	6.400		
MAX. RECORDING TEMP.	183 DEGS		
EQUIP. NO. / LOCATION	HL 5576 H101 AND TX		
RECORDED BY	CARLOS COUZ		
INTERPRETED BY	BILL BLOUNT		



Well #1-1
 Completion Date: 6/18/96
 Perf: 5468 - 5719
 IPF: 174 BOPD + 96 MCFGPD
 Cumulative Oil: 2.2 MBO
 Cumulative Gas: 8.4 MMCF

Drill Stem Test Data:
 DST #1
 From 5569 to 5686
 Final shut-in pressure: 2490 psig
 1/15/96

SANDHILLS FIELD AREA TUBB MAP



OU
THESIS
APP
COP.2

>-1500

EXXON COMPANY USA
PRODUCTION DEPARTMENT
MIDLAND PRODUCTION ORGANIZATION
RESERVOIR MANAGEMENT OPPORTUNITIES

SANDHILLS FIELD AREA CONTOUR MAP
CRANE COUNTY, TEXAS
ONLY SELECTED WELLS SHOWN
TUBB MAP
CINT=20 GINT=600
ANNOTATIONS: WELL NUMBER, REFNO, VALUE, COMMENT
PROD.MID.MODEL.SNBHILLS.DEVELOP.APLC(QUICKMAP) 14:05

0 2000 FEET SCALE=2000 FEET/INCH
G.J. APPLETON AUGUST 5, 1996