



Use of Plastic Mulch and Row Covers in Vegetable Production

Dean McCraw
Extension Horticulturist

James E. Motes
Extension Vegetable Specialist

Oklahoma Cooperative Extension Fact Sheets
are also available on our website at:
<http://osufacts.okstate.edu>

Growing vegetables commercially requires intensive management and involves risk whether in a market garden, a truck farm or a larger commercial farm. The requirements for success, however, are similar. Marketing success requires the grower to have an ample supply of high quality product available to sell, preferably when the price is highest. Price is generally highest when the supply is the lowest, thus the importance of "off-peak" production, i.e. production earlier or later in the season than competitors.

Agricultural plastics are available to help growers achieve their production goals whether that is earliness, improved quality or increased yields. Generally, the smaller the farm or market garden the more important is intensive cultural practices. Mulches and row covers are management tools growers can use to help meet their production goals.

Mulches

Mulching is a technique which has been used by vegetable growers for many years.

Mulches are either organic or inorganic. Organic mulches are those derived from plant and animal materials. Those most frequently used include plant residues such as straw, hay, peanut hulls, leaf mold and compost; wood products such as sawdust, wood chips and shavings; and animal manures. Organic mulch properly utilized can perform all the benefits of any mulch with the possible exception of early season soil warming. However, natural mulch materials are often not available in adequate quantities for commercial operations or must be hauled to the place of use. Natural materials are not easily spread on growing crops and require considerable hand labor. Expense and logistical problems have generally restricted use of organic mulch to home gardeners and small market gardens with only limited use on a large commercial scale.

Inorganic mulch includes plastic mulch and accounts for the greatest volume of mulch use in commercial vegetable production.

Benefits of Plastic Mulch

Earliness. Plastic mulch can be used effectively to modify soil temperature. Black or clear mulch intercept sunlight which warms the soil. White or aluminum mulch reflects the sun's heat and keeps the soil cooler. Black mulch applied to the

planting bed prior to planting will warm the soil and promote faster growth in early season, which generally leads to earlier harvest. First harvest acceleration of 7 to 14 days is not uncommon, depending on weather conditions. Clear mulch warms the soil more than black and usually provides even earlier harvest. Clear mulch, however, does not block light, which means weed control beneath the mulch is needed.

Soil moisture regulation. Plastic mulch helps prevent soil water loss during dry years and sheds excessive water away from the crop root zone during periods of excessive rain fall. This can reduce irrigation frequency and amount, and may help reduce the incidence of moisture related physiological disorders such as blossom end rot on tomato.

Weed control. The type of mulch selected can exert a distinct effect on weed control. Black plastic mulch prevents light from reaching the soil surface, which in turn prevents most weeds from growing. Intact plastic controls essentially all annual weeds and some perennial weeds such as Johnsongrass. Nutsedge is not effectively controlled by plastic mulch. Clear mulch does not prevent weeds from growing and, in fact, may make their growth more vigorous due to the growing environment beneath the plastic.

Reduced fertilizer leaching. As excessive rainfall is shed from the root zone, fertilizer loss due to leaching is reduced. This is particularly true in sandy soils. This allows the grower to place more preplant fertilizer in the row prior to planting the crop.

Improved quality. Plastic mulch helps keep fruits such as tomato from contacting the ground. This reduces soil rot and helps keep the product clean. Fruit cracking and blossom end rot are reduced in many cases. Fruits tend to be smoother with fewer scars. Properly installed plastic helps keep soil from splashing onto the plants during rainfall, which can reduce grading time.

Reduced soil compaction. Soil under the mulch remains loose and friable. Aeration and soil microbial activity are enhanced.

Reduced root pruning. The mulch strip effectively prevents cultivation equipment from injuring crop roots. Cultivation and/or chemical weed control can still be used in the row middles.

Improved plant growth. A combination of the above, and perhaps other factors, results in more vigorous, healthier plants which may be more resistant to pest injury.

Disadvantages

Cost. Plastic mulch costs approximately \$275 to \$300 per acre including installation and removal. Most of this is an up front cost which must be borne for the duration of the crop. Some additional equipment is also required. As a minimum, a mulch laying machine must be purchased or constructed in the farm shop. Equipment must also be available to prepare and shape the planting bed for mulch application. Also, depending on the extent of the operation, transplanting/seeding equipment must be purchased.

Removal and disposal. Non-degradable plastic mulch must be removed from the field. First time users often find this a frustrating experience until individual techniques are developed. Machines are available to lift the plastic but the bulk is done with hand labor. Approximately eight hours of labor are required to remove plastic from one acre.

Types of Plastic Mulch Available

Many different kinds of mulch material are available. Widths vary from 36 to 60 inches. Thickness varies from $\frac{3}{4}$ to $1\frac{1}{2}$ mill or more. The surface texture of the material may be slick or embossed. Embossed plastic has visible patterns on the surface which give the plastic a wrinkled appearance. This kind of mulch is generally more resistant to wind fatigue and cracking than slick mulches. Other types of mulch, called linear low density types, have a slick surface appearance, but may have what appears to be parallel lines across the surface which intersect to form diamond-shaped patterns. These lines serve to reinforce the mulch and help prevent tears from crossing from one diamond to another. Be sure to use an adequate strength material. A $1\frac{1}{4}$ mill embossed plastic is adequate for most applications in Oklahoma. Mulch which becomes brittle and breaks up too early is usually worse than no mulch at all, not to mention the money wasted.

Most agricultural mulch is black. Clear mulch is used in some areas due to its increased soil warming characteristics. Weed control beneath the mulch is a deterrent to its use. White or aluminum reflective mulch is used where soil cooling is desired, such as establishing fall crops during the heat of summer. White or aluminum colored mulch reflects the sun's heat and helps cool the soil. Research has shown that white or aluminum reflective mulch also repels aphids which spread some virus diseases in vine crops such as squash. Various other colors of mulch seem to affect plant growth and may prove to be advantageous over black in the future. A particularly promising material is a light green plastic which provides the soil warming benefits of clear mulch, but does not allow weeds to grow beneath.

Currently much research is being conducted into plastic mulch materials which degrade either by sunlight (photodegradable) or biological organisms in the soil (biodegradable). Photodegradable materials are available which break down after 30 or 60 days exposure to sunlight. These products show promise particularly for spring crops in Oklahoma, and their use will likely increase. Degradable materials need not be removed from the field at the end of the growing season.

Soil Preparation and Fertilization

Plastic mulch is not a substitute for thorough soil preparation. A seed/transplanting bed prepared for mulch application

should be the same quality as in non-mulched fields. The soil should be free of rocks, sticks, hard clods and other material which could puncture the plastic.

Rows should be laid off on widths compatible with available equipment. The ability to work row middles is restricted with use of plastic mulch due to mulch width. Rows on 6-foot centers covered with 5-foot wide mulch will have only three to four feet of free middle space, depending on the height of the bed and the amount of the mulch used for anchorage. Provisions must be made for weed control in the row middles, either with chemicals or mechanical cultivation.

All preplant fertilizer must be applied prior to mulch application. Fertilizer can be applied in a furrow prior to bedding or incorporated in the bed during the bedding process. The practice varies depending on the crop to be grown.

Machinery is available to accomplish all operations associated with use of plastic mulch. As a minimum, a furrow must be opened with a lister for fertilizer application, and a ridge must be raised with a bedder or disc hillers and shaped to accept the mulch. Equipment is available to accomplish this in one operation. When finished, the bed should be four to six inches high, about 30 to 34 inches wide (depending on mulch width) with about $1\frac{1}{2}$ to two inches slope from center to edge (Figure 1).

The mulch should never be applied to excessively dry or wet soil. Dry soil settles and allows mulch to loosen after wetting while wet soil does not seal the mulch well, making it subject to blowing off the bed.

An acceptable procedure is to apply fertilizer and raise ridges with disc hillers for settling prior to mulch application. The top of the ridges can be knocked off with a commercially available bed shaper or with a shaper constructed in the farm shop. If the bed has thoroughly settled, some growers have done a suitable job of shaping the bed utilizing a pre-shaped device mounted on a tool bar ahead of the mulch layer. If the bed is prepared, and mulch/drip tube laid in one operation, a bed press is needed to prevent the bed from settling after installation.

Mulch Application

Plastic mulch is most efficient when used in conjunction with drip irrigation. A drip tube can be applied on the soil sur-



Figure 1.

face under the mulch or buried two to three inches beneath the soil surface. Either way, the tube must be installed prior to the mulch. If buried, the drip tube should be installed with the emitter holes oriented upward and without excessive stretching. For spring planting, the mulch should be applied at least seven days ahead of planting to allow time for soil warming. Soil fumigation can also be accomplished during mulch application. Fumigation is a specialized operation. Make plans well ahead of time to allow for equipment readiness as well as necessary waiting periods between treatment and planting. Confer with your OSU county Extension educator for fumigation recommendations.

Apply the mulch properly in order to realize all of the potential benefits for your money. The plastic should be in continuous contact with the soil, i.e. the bed should be uniform with no dish shapes to hold the mulch off the soil. Space between the soil and the mulch interferes with heat transfer and prevents the soil from warming as quickly and thoroughly. It also allows the plastic to "whip" in the wind which can start tears. Spaces also allow movement of the mulch against the stems of transplants which can cause abrasion of stems and death of the plant.

The mulch should be applied with a properly adjusted machine containing at least the components shown in Figure 2. The edges of the mulch should be secured with a generous amount of soil. However, do not apply more soil than is needed, as this makes the mulch more difficult to remove. Stretch wheels should be adjusted to stretch the mulch edge securely into the anchoring furrow for covering.

The soil should "roll" smoothly from the covering discs onto the edge of the plastic. Ideally the furrow openers will prepare a rounded opening, the stretch wheels will securely hold the plastic in the furrow, and the covering discs will return to the furrow all soil removed by the openers. This should result in a "lip" of plastic filled with soil (Figure 3). Mulch applied properly will not blow off the row and requires minimum effort to remove.

Plastic mulch is usually packaged in 2400-foot rolls. Drip tube is sold in rolls containing about 7500 feet, depending on the type of tube and brand. Rows on 6-foot centers require 7260 feet of row to cover an acre of land. Therefore, about three rolls of mulch and one roll of drip tube are needed per acre on 6-foot centers.

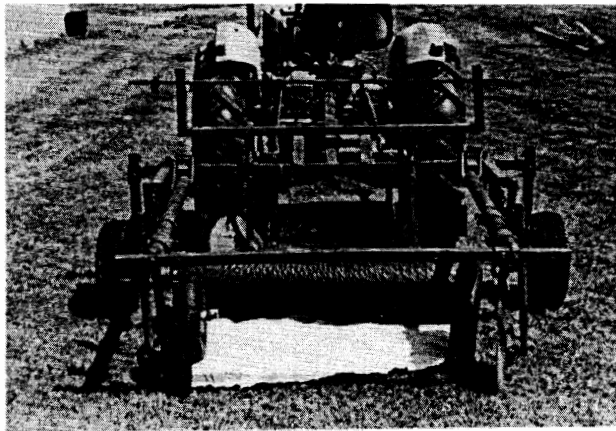


Figure 2.



Figure 3.

For crops grown in single rows, the drip tube should be installed approximately three inches off center of the row. If crops are to be planted in two rows per bed, install the drip tube in the center of the bed. This keeps the tube from being damaged during the transplanting or seeding operation.

If equipment prevents working the middles after installing the mulch, apply herbicide to the middles prior to laying the mulch. It is generally best to leave adequate space between rows to allow middles to be worked with a rototiller or small tractor.

Planting

Planting through plastic mulch can be accomplished either manually or mechanically, depending on the size of the operation. Transplanters can be constructed in the farm shop or purchased at prices ranging from \$1200 to \$1500. Depending on the type and capabilities of the machine, planting space can vary from 18 to 60 inches in row. The simplest planter is a "water wheel" planter which punches a hole through the mulch and fills it with water/starter solution. Two workers ride the machine and set a plant into each hole of water. The water settles the soil around the plant's roots as it percolates down into the ground (Figure 4). Other types receive the plant into a pocket then punch a hole in the plastic, set the plant in the hole, press the soil around the plant and deliver water/starter solution onto each plant (Figure 5).

Modifications are available to allow use of some transplanters for delivering a "plug mix" into the planting hole. A "plug mix" consists of a potting soil:seed mix in a ratio which provides an average of three to five seeds in each one-fourth cup of mix. The practice is effective on many crops including vine crops, late tomatoes, peppers, etc.

With some organization, hand transplanting and seeding can be accomplished quite efficiently. A crew of at least four is generally needed. Devices can be built for hand use or

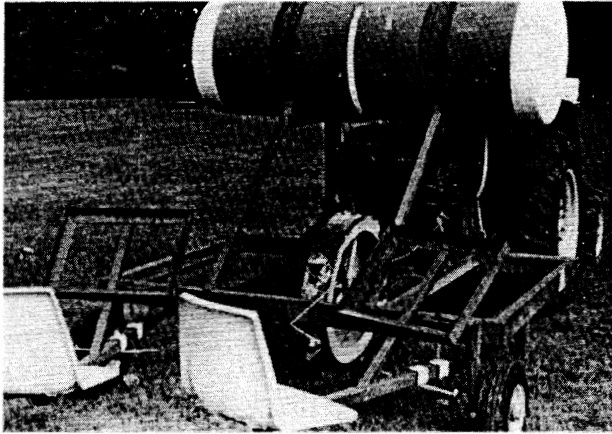


Figure 4.

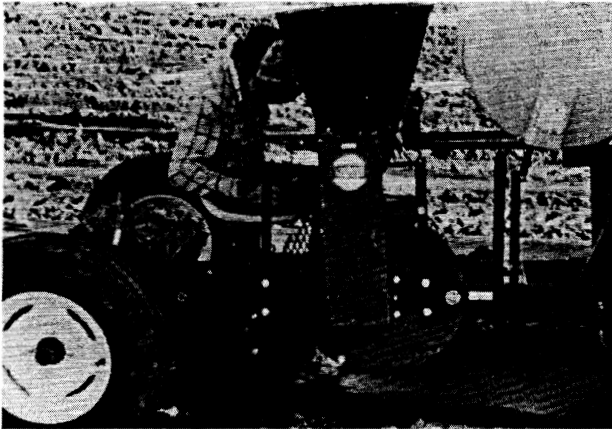


Figure 5.

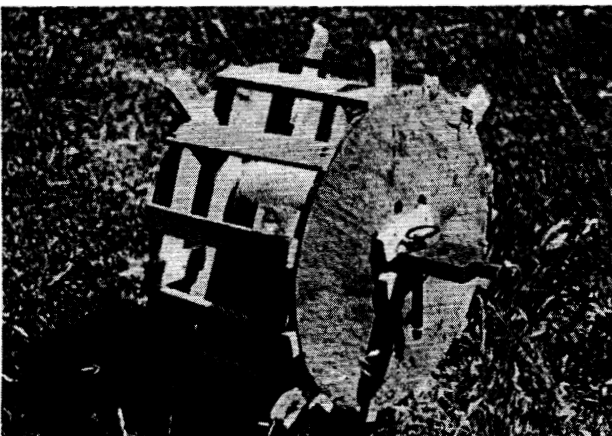


Figure 6.

tractor mounted to mark and punch holes for hand planting (Figure 6).

Culture and Management

Plastic mulch does not eliminate the need for good cultural practices. On the contrary, more intensive management is needed to insure utilization of the mulch to its greatest advantage. Crops should be observed regularly for insect build up under the plastic around plant openings. If the mulch loosens after installation and flaps in the wind, apply a shovel of soil in the middle of the plastic at regular intervals down the row to stabilize the mulch. This can prevent the mulch from blowing off the row or damaging transplants. Establish and follow a good integrated pest control management program for the particular crop.

Follow good irrigation practices. Drip irrigation is the method of choice. Furrow irrigation along the edge of the plastic can be used, but with less success. Soil conditions must be suitable to furrow irrigation. While sprinkler irrigation may be better than no irrigation at all, it is generally of only marginal value. Use tensiometers to determine proper watering frequencies and amount for the drip system. Side dress fertilization can be accomplished by injecting water soluble fertilizer through the drip system. In some cases, placement of nitrogen fertilizer in a shallow furrow beside the edge of the plastic can be beneficial to such crops as tomato. Use good judgment to assess the nutrition status of the plants and act accordingly.

Removal

After the plastic has served its purpose, i.e. produced at least one and preferably two or more crops, it must be removed from the field. The plastic should be removed as soon as possible after use ceases. Do not allow the plastic to become overgrown with weeds prior to removal. **Do not attempt to plow or disc under a non-degradable plastic mulch.** You will deal with the residue problem for years to come. Growers seem to develop their own techniques that work best in each unique situation. A machine is available to lift the plastic and shake off some adhering soil, leaving the mulch laying on the top of the row.

A suitable mulch lifter can be constructed by mounting a coulter on a tool bar centered on the row. The coulter cuts the mulch into two strips while 10 to 12-inch sweeps cut under the "lip" of the plastic to loosen the soil seal (Figure 7). The plastic is then picked up by hand and removed from the field. Small quantities of plastic can be burned. Larger amounts should be delivered to land fills. Disposal of spent plastic mulch is a significant problem for the industry. Recycling is available in large use areas such as Florida. Degradable mulches will likely reduce or eliminate the disposal problem in the future.

Row Covers

The major benefits of row covers are earliness and wind protection. Earliness is generally attributed to warming beneath the cover. Wind protection reduces stress on plants particularly during early growth stages. Location and market intent are key factors contributing to the value of earliness to a specific operation. Earlier production to a

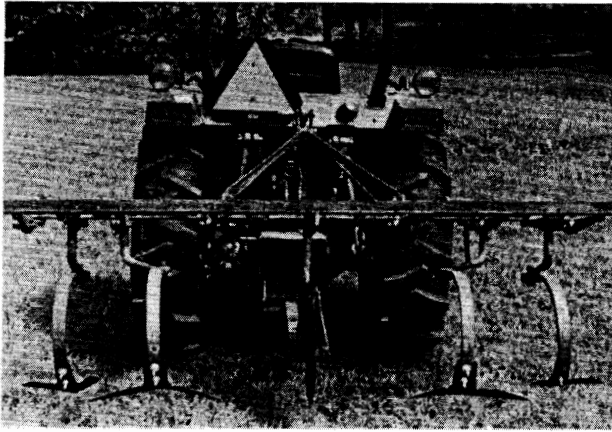


Figure 7.

wholesale grower/shipper may mean direct competition with other growers in earlier production areas to the south. To a grower specializing in local retail sales or nearby wholesaling, 10 to 14 days earlier production can mean several cents more per pound or dollars per box. The decision to use row covers is specific to each situation. Their use is generally limited to the highest value multiple harvest, warm season crops, e.g. tomato, pepper, squash.

The most flexible, yet most expensive, method of row cover employment is using two sheets of plastic 24 to 30 inches wide anchored on each edge with soil and fastened together at the top with clothespins. The plastic is supported by wire hoops (9 gauge galvanized, 60 inches long) on about 5-foot spacing down the row. Some growers also run a 16 gauge wire the length of the row at the peak of the hoop, with wood stakes every 20 to 30 feet for added support. The clothespins allow the cover to be vented on warm days (Figure 8). A less expensive alternative is a single sheet of plastic about 60 inches wide, stretched over the wire hoops after the crop is transplanted, and anchored with soil on each side. Porous, silted or perforated plastic may be used and additional manual venting (e.g. slit with razor blade) may also be required if excessively warm days occur in early season. Supported row covers are best used with plastic mulch, due to weed control problems.

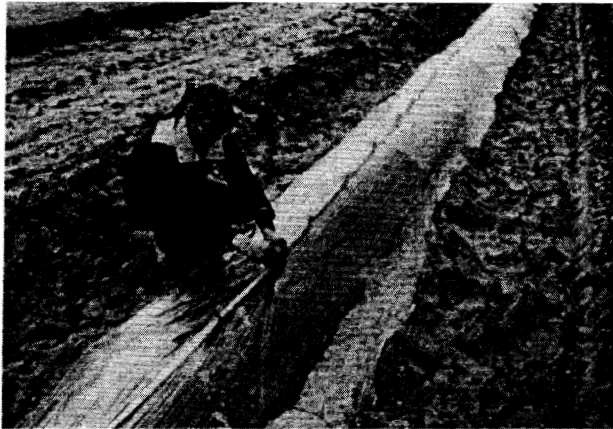


Figure 8.

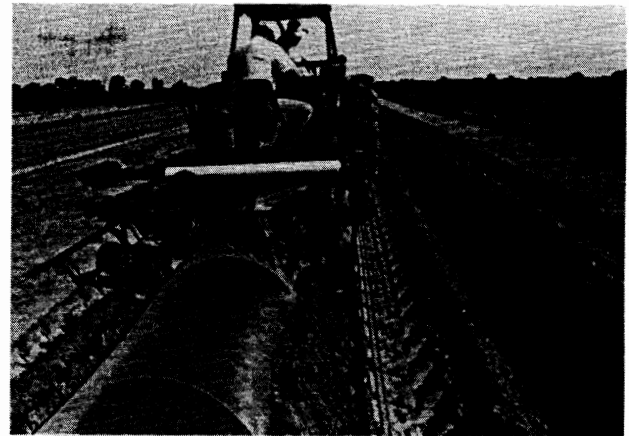


Figure 9.

The time of removal of the row cover is a key management decision. Removal too early reduces the temperature modification benefit. Removal too late can interfere with pollination, particularly with vine crops.

Machinery is available to install wire supported row cover systems including setting the hoops and installing the plastic over the row (Figure 9). In some cases, conventional mulch laying machines can be modified or adapted to install the plastic.

Currently, the greatest emphasis on row covers is in floating covers, i.e. those which require no wire or other structural support. They are lightweight (0.5 oz/sq yd) spunbonded materials which lay directly on top of the plants. The major disadvantage of these materials is abrasive action of the material on plants caused by wind. This is at least partially counteracted by using wide row materials. The most common width is 21 feet. These materials tend to "float" more in the wind and are less abrasive to crop plants. Wide row covers can be laid by hand or by machine and, with some care, can be retrieved for use a second year. This technique is probably best utilized in market gardens or other direct-to-consumer sales operations. Problems in addition to cost are the logistics of handling and weed control beneath the covers. Herbicides can be utilized to minimize weed problems.

The third method of employment of row covers is over the midbed trench. This method utilizes a 5-foot wide transparent cover material stretched tightly across a bed, shaped to leave a mound of soil on either side of the row. This shaped bed supports the cover material off the crop plants. Application is limited to relatively low growing crops such as melons and squash (Figure 10). The top of the planting bed must be above the adjacent furrow to allow adequate drainage. The crop is seeded, plug seeded or seedlings are transplanted down the center of the herbicide treated bed. The row cover material is then stretched tightly over the bed using a conventional mulch laying machine. This method is less expensive and troublesome than those using wire support. Use of a porous cover allows water to be applied by sprinkle irrigation. A drip tube can also be laid beneath the cover. The major problem with this technique is weed control. Preemergence or pre-plant herbicides help hold down weeds under the cover. A postemergence grass herbicide is generally needed when the covers are removed.

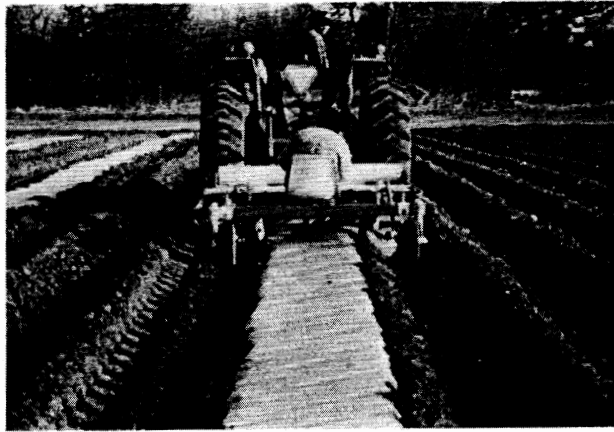


Figure 10.

Plastic mulches and row covers used alone or in combination offer the grower a management tool which can increase earliness, yield, quality and return per acre in exchange for an additional input. Wire supported row covers may be best adapted to market or truck gardens for direct sales. Plastic mulches are more widely applicable and offer good potential to vegetable producers. For greatest efficiency and economy, mulches and/or row covers must be employed as part of a total production system.

The Oklahoma Cooperative Extension Service

Bringing the University to You!

The Cooperative Extension Service is the largest, most successful informal educational organization in the world. It is a nationwide system funded and guided by a partnership of federal, state, and local governments that delivers information to help people help themselves through the land-grant university system.

Extension carries out programs in the broad categories of agriculture, natural resources and environment; family and consumer sciences; 4-H and other youth; and community resource development. Extension staff members live and work among the people they serve to help stimulate and educate Americans to plan ahead and cope with their problems.

Some characteristics of the Cooperative Extension system are:

- The federal, state, and local governments cooperatively share in its financial support and program direction.
- It is administered by the land-grant university as designated by the state legislature through an Extension director.
- Extension programs are nonpolitical, objective, and research-based information.
- It provides practical, problem-oriented education for people of all ages. It is designated to take the knowledge of the university to those persons who do not or cannot participate in the formal classroom instruction of the university.
- It utilizes research from university, government, and other sources to help people make their own decisions.
- More than a million volunteers help multiply the impact of the Extension professional staff.
- It dispenses no funds to the public.
- It is not a regulatory agency, but it does inform people of regulations and of their options in meeting them.
- Local programs are developed and carried out in full recognition of national problems and goals.
- The Extension staff educates people through personal contacts, meetings, demonstrations, and the mass media.
- Extension has the built-in flexibility to adjust its programs and subject matter to meet new needs. Activities shift from year to year as citizen groups and Extension workers close to the problems advise changes.

Oklahoma State University, in compliance with Title VI and VII of the Civil Rights Act of 1964, Executive Order 11246 as amended, Title IX of the Education Amendments of 1972, Americans with Disabilities Act of 1990, and other federal laws and regulations, does not discriminate on the basis of race, color, national origin, gender, age, religion, disability, or status as a veteran in any of its policies, practices, or procedures. This includes but is not limited to admissions, employment, financial aid, and educational services.

Issued in furtherance of Cooperative Extension work, acts of May 8 and June 30, 1914, in cooperation with the U.S. Department of Agriculture, Robert E. Whitson, Director of Cooperative Extension Service, Oklahoma State University, Stillwater, Oklahoma. This publication is printed and issued by Oklahoma State University as authorized by the Vice President, Dean, and Director of the Division of Agricultural Sciences and Natural Resources and has been prepared and distributed at a cost of 20 cents per copy. 0607

