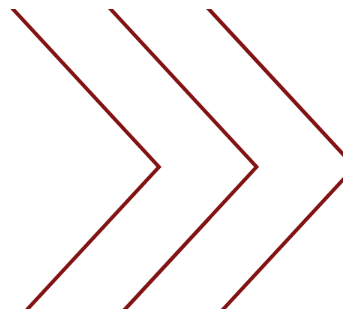
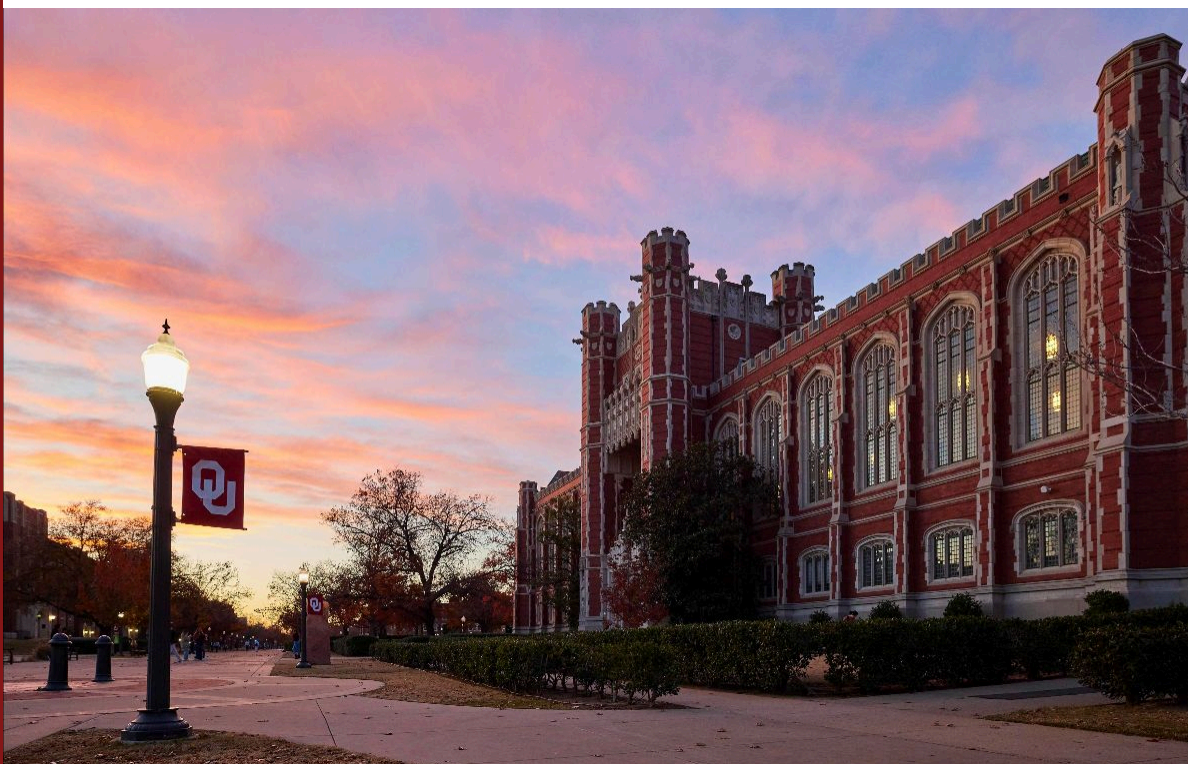




UNIVERSITY LIBRARIES
The UNIVERSITY of OKLAHOMA
FACULTY NEWSLETTER



October 2024



View of Bizzell Memorial Library at sunset.

In this month's newsletter:

- [News and Announcements](#)
- [Featured Resource](#)
- [Exhibits](#) in the UL
- [Research Libraries Updates](#)
- UL [Events and Workshops](#)

News and Announcements

Open Access Week 2024

Join us for a week of events celebrating this year's theme, "Community over Commercialization." Learn more about the [Open Access Policy](#).

- **Open Access Digital Passport Challenge**

Download your [passport](#) on October 21 and collect stamps by participating in mini digital challenges and attending any of the following in-person events!

- **Yarn Craft**

Monday, October 21, 1 - 3 p.m., Across from Bizzell Circulation Desk

Celebrate the start of International Open Access Week with a fun yarn craft while learning about the movement to democratize information.

- **Spin the Wheel, Win a Prize**

Tuesday, October 22, 11 a.m. - 1 p.m., Across from Bizzell Circulation Desk

Spin the wheel for a chance to win fun prizes while learning about OU Libraries' open access journals and publishing initiatives.

- **Spin the Wheel, Win a Prize**

Wednesday, October 23, 11 a.m. - 1 p.m., Across from Bizzell Circulation Desk

Come on over – or come on back – to spin the wheel again!

- **Subvention Funding Cafe**

Thursday, October 24, 1 - 3 pm., Bizzell Community Room (LL118)

Enjoy coffee, tea, and donuts while learning about the OU Libraries Subvention Funding Program and recent changes.

- **Open Access Week Celebration**

Friday, October 25, 1:30 - 2:30 pm., Bizzell Community Room (LL118)

Join us for tea and cake to celebrate participants who completed the Open Access Digital Passport Challenge.

Nightmare on Research Street

University Libraries and the Graduate College invite faculty, staff, and students to share their scariest story of research loss or near-misses! Stories are due Monday, October 28, and the two social media crowd favorites will win a rugged, high-quality 2 TB external hard drive. Check the [contest page](#) for further information.

Then on October 31, join us at 12 - 1 p.m. in the Bizzell Community Room (LL118) for pizza, drinks, and the announcing of the contest winners! [Registration is recommended](#) for this event.

Transforming Faults: Embracing Detours and Setbacks on an Academic Journey

Faculty, students, and the broader community are invited to University Libraries' next "Pitfalls & Epiphanies" lecture on Tuesday, November 12 at 4 p.m. in the Bizzell Community Room (LL118).



In Dr. Heather Bedle's lecture "[Transforming Faults: Embracing Detours and Setbacks on an Academic Journey](#)," she will review her unconventional career path of a physicist-turned-geologist-turned-transdisciplinary researcher, highlighting the pivotal moments of insights, challenges, and failures that shaped her scientific career. The presentation will explore how personal values, intellectual curiosity, and a commitment to mentorship can drive scientific innovation and spur academic growth.

OU Libraries Survey

Please take five minutes to [tell us what you think](#) about our current library services and how we might better contribute to your academic success. Your feedback guides our future plans and how we evolve to meet the needs of today's students, faculty, and staff.

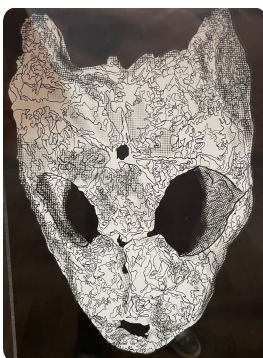
Featured Resource

Single Case in the Social Sciences Now Open Access

The OU Libraries' [Publishing Services](#) unit, in partnership with the Jeannine Rainbolt College of Education, has officially launched the publication of its newest open access, peer reviewed journal, [Single Case in the Social Sciences](#). The journal will publish biannually, focusing on original experimental single-case studies, systematic reviews, and methods articles aligned with open science guidelines and aimed at expanding knowledge across applied behavior analysis, counseling, education, psychology, social work, and related fields. The inaugural issue is now available. [Read more.](#)

Exhibits at the University Libraries

New Exhibit



Prehistoric Visions

Main Floor of Bizzell, Through Fall 2024

As part of the [Sam Noble Museum's Prehistoric Visions exhibit](#), this display features student artwork for the course "Drawing the Natural World," in which students were tasked with creating a life recreation based on a fossil from the museum's collections.

Ongoing Exhibits



A Celebration of 120 Years of the Pride of Oklahoma!

Main Floor of Bizzell, Through Spring 2025

Co-curated by former members of the PRIDE and University Libraries, this multimedia exhibition will celebrate twelve decades of the PRIDE of Oklahoma, including physical material from the PRIDE's archives with a large array of historical photographs from the Western History Collections' [University Archives](#).



The Red Dress Collection

Main Floor of Bizzell, Through Spring 2025

In celebration of the Weitzenhoffer Family College of Fine Arts' centenary year (1924 - 2024), *The Red Dress Collection* represents the unique, creative, and collaborative art form that is costume design.



Atomic Era Materials from the Special Research Collections

5th Floor of Bizzell

You've seen the film, now learn more about the Atomic Era and Oppenheimer in the History of Science Collections. Primary sources, including some from the recently processed [Jens Rud Nielsen Archive](#) are on display, and secondary sources are available in the Reading Nook.



Newbery Award 100th Anniversary

Main Floor of Bizzell

2022 marked the 100th anniversary of the John Newbery Medal, awarded to each year's "most distinguished contributions to American literature for children." The winners displayed in this exhibit are available for checkout.

Research Libraries Updates

Each month, UL will provide the latest national and global news in academic research libraries and resources.

What the Reinstatement of Net Neutrality Means for Higher Education

Washington has gone from negative to positive to negative to positive again on

network neutrality, and advocates for educators say they need to see the federal government commit to making open networks a policy priority. [Read more.](#)

How College Students Respond to Climate Change in Troubled Times

Information literacy educates individuals for life as free human beings who have the capacity to influence the world. But at a time where there is less agreement about what is true, what can be trusted, and where information has originated, it's more challenging than ever for the public to reach consensus about how to respond to big, complex problems such as climate change. [Read more.](#)

Upcoming Events and Workshops

For a list of all upcoming UL events, visit [our events page](#).

MATLAB for Data Analysis

October 17, 9 a.m. - 12 p.m., Bizzell LL123

[Registration required.](#) MATLAB is a tool used for calculations, analyzing data, visualizing data, and many other analysis tasks. In this workshop, we will explore how to interact with the MATLAB software and how to use MATLAB for data analysis with an example data set.

NVivo Workshop

October 18, 3 - 4:30 p.m., Bizzell LL123

[Registration required.](#) This workshop is an introductory session on the application of NVivo qualitative data analysis software. NVivo is used by qualitative researchers to examine social phenomena by analyzing interviews, field notes, surveys, webpages, journal articles, and other text-based artifacts

Digital Tools for Humanities Research Series

October 29, 12 - 1 p.m., Bizzell LL118: [Managing Citations with Zotero](#)

November 12, 12 - 1 p.m., Bizzell LL118: [Writing a Monograph with Scrivener](#)

December 3, 12 - 1 p.m., Bizzell LL118: [Using Markdown](#)

In this series co-sponsored by the Arts & Humanities Forum, the aim is to introduce faculty and students to commonly used digital tools for humanities research. Sessions will include a 20-minute presentation on the tool followed by a discussion of library support, then 30 minutes for participants to practice using the tool. Bring your lunch and your computer and join us!



Copyright © 2024
All rights reserved.

Our mailing address is:

401 W. Brooks St.
Norman, Oklahoma 73019

Questions?

Email us at libpr@ou.edu

Want to change how you receive these emails?
You can [update your preferences](#) or [unsubscribe from this list](#).