

# LIBRARIES

## Faculty Newsletter



Bizzell's south tower. Photo by [JoAnn Palmeri](#).

### In this month's newsletter:

- [News and Announcements](#)
- [Profiles in Open](#)
- [Research Libraries Updates](#)
- [Exhibits](#) in the UL
- UL [Programs and Workshops](#)

---

## News and Announcements

### Architecture Library Closing

The Architecture Library will be permanently closing on Friday, December 16. The collections, technology, and furniture will be integrated into UL holdings in Bizzell, the LSC, and the Fine Arts Library as appropriate. Personnel will be relocated to areas of highest need. While the collections are in transition, please use Sooner Xpress to request items traditionally held in the Architecture Library. If you have any questions, please contact [Matt Stock](#) or [Sarah Robbins](#).

## Increased Frontiers Open Access Publishing Discount

Effective January 1, 2023, OU Libraries' membership to [Frontiers](#) will provide OU authors with a 15% discount on article processing charges for open access articles. Frontiers publishes 185 journals in the social sciences, STEM, and the humanities.

### 3D Capturing the St. Chad Gospels



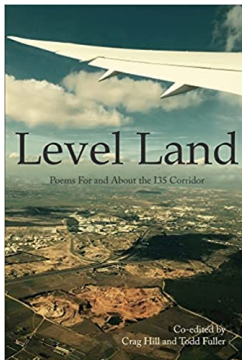
Emerging Technologies Librarian Kristi Wyatt and Dr. Bill Endres travelled to Lichfield Cathedral in England to work on new 3D capture methods of the 8th Century St. Chad Gospels. [Read about their journey on Twitter.](#)

### WHC Curator Among Faculty Selected as Consortia Leaders for Native Nations Press



Representing departments spanning Native American studies, law, education, visual arts and more, twelve OU faculty will comprise an inaugural Research Consortia Leaders for the Native Nations Imprint of the University of Oklahoma Press. Research Consortia Leaders will guide seven areas of strength in research at OU, charting a path forward for the Imprint's development and implementation. One of the selected faculty members is [Lina Ortega](#), associate curator at the Western History Collections and Native American studies subject specialist in the University Libraries. [Read more.](#)

### Level Land: Poems For and About the I35 Corridor



Western History Collections Curator Todd Fuller and College of Education Professor Crag Hill present a collection of poems from folks from all walks of life: from college professors to community performers, in a variety of languages (including English, Spanish, and indigenous languages such as Kiowa) about a variety of subjects, all inspired by the cultural and geographic landscape of this unique region of America. *Level Land* redefines flyover country as a creative corridor filled with the vibrancy of life.

### Course Marking

Course marking consists of deploying a simple marking system to assist students in having relevant information available for their use when registering for classes. As part of our ongoing efforts to contribute to Pillar 3 of OU's Strategic plan, *Make OU's Excellence Affordable and Attainable*, University Libraries is participating in a campus-wide committee focused on marking courses having no course materials costs

associated with them. For questions, contact Open Educational Resources Librarian [Morgan Briles](#). More information on this initiative to come.

---

## Profiles in Open

University Libraries regularly features OU scholars publishing open access.

### David McLeod, PhD

**Associate Director and Associate Professor**

**Anne and Henry Zarrow School of Social Work**



This month's [Profile in Open](#) features Dr. David McLeod, who is very engaged in a range of open initiatives. He serves as the Editor-in-Chief of the [Journal of Forensic Social Work](#), a peer-reviewed, open access journal formerly published behind a paywall but now available for free through OU Libraries. Additionally, he has utilized subvention funding from OU Libraries to publish his research openly, including the articles "[Intimate Partner Violence: Innovations in Theory to Inform Clinical Practice, Policy, and Research](#)" and "[Modernized female sex offender typologies: Intrapsychic, behavioral, and trauma related domains.](#)" More

recently, he has been exploring open educational resources, including converting to teaching with an open access book.

In Dr. McLeod's profile, he discusses the increased impact of open access publications amongst students, researchers, and the broader public as well as the benefits of utilizing [open educational resources](#) (OER) to further pedagogical goals.

---

## Research Libraries Updates

Each month, UL will provide the latest national and global news in academic research libraries and resources.

### White House Considering Pilot Program to Improve Public Interaction with Federal Data

U.S. Chief Data Scientist Denice Ross said the White House was considering a pilot program after its Office of Science and Technology Policy received nearly 170 responses to a [request for information](#) on how to make federal data sets more accessible, equitable, and accountable. [Read more.](#)

### Joy Harjo's "Living Nations, Living Words" Honored

The Association of Tribal Archives, Libraries, and Museums has presented one of its Guardians of Culture and Lifeways International Awards to the Library of Congress





and former U.S. Poet Laureate Joy Harjo for "[Living Nations, Living Words](#)," Harjo's signature project as the nation's first Native American poet laureate between 2019 and 2022. [Read more.](#)

## Reading Internationally

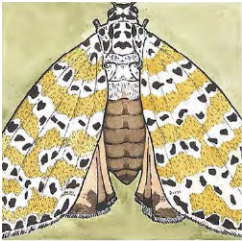
Across multiple disciplines, research has pointed to gender citation bias, racialized citation bias, and the regional tilt of many international journals towards authors based in a small set of countries. These citation patterns not only have an effect on the quality of research publications and the breadth of perspectives and insights circulating as contributions to knowledge, but also on the futures of individual scholars working in systems in which citation scores matter for careers. [This Learning. Media and Technology editorial](#) focuses on the linguistic diversity of published research and aims to broaden the range of scholars cited.

---

## Exhibits at the University Libraries

### Drawing the Natural World

**Fine Arts Library, Through December 2022**



Collaborating with many members of the museum, including generous support from the ethnology and vertebrate paleontology departments, OU art students closely studied and sketched specimens from the Sam Noble Museum's extensive collections. The fascinating work in this show was created by current and past students, along with other friends of the class.

### Contemporary Native American Authors

**Bizzell Main Floor, Through December 2022**

To honor Indigenous People's Month, University Libraries curated an exhibit of a number of the most important Native American authors. A number, including LeAnne Howe, are included in the collection of the same name in the UL's Western History Collections.

### Political Resistance in Latin American

**Bizzell Main Floor, Through December 2022**

This exhibit was created in collaboration with Dr. Sarah Hines, assistant professor of history. The history of Latin America has been marked by repression but also successful political resistance. Dr. Hines presents two examples of popular uprisings in response to the privatization of public goods and land as well as the repression of indigenous communities.

## Mother of Dragons: The Life and Discoveries of Mary Anning

### Bizzell Main Floor, Through August 2023



In celebration of the University Libraries' new acquisitions of Hugh S. Torrens' collection in the History of Science Special Research Collections, we honor the impact of Mary Anning's fossil discoveries in Lyme Regis in the early 1800s on the history of geology in this exhibit.

---

## Upcoming Events and Workshops

For a list of all upcoming UL events, visit [our events page](#).

### Data Carpentry for Geospatial with R

**December 20, 9:00 a.m. - 4:30 p.m., Bizzell LL123** ([Register](#))

**December 21, 9:00 a.m. - 4:30 p.m., Bizzell LL123** ([Register](#))

This [Data Carpentry](#) workshop is co-developed with the National Ecological Observatory Network ([NEON](#)). It focuses on working with geospatial data - managing and understanding spatial data formats, understanding coordinate reference systems, and working with raster and vector data in R for analysis and visualization.

This is an intermediate workshop and requires a basic working knowledge of the [R programming language and RStudio](#). Please [contact Mark Laufersweiler](#) with any questions.



---

*Copyright © 2022  
All rights reserved.*

**Our mailing address is:**  
401 W. Brooks St.  
Norman, Oklahoma 73019

**Questions?**  
Email us at [libpr@ou.edu](mailto:libpr@ou.edu)

Want to change how you receive these emails?  
You can [update your preferences](#) or [unsubscribe from this list](#).