

# LIBRARIES

## Faculty Newsletter



Visitors to Bizzell Memorial Library engage with the Day of the Dead exhibit on the Main floor the week of October 31st.

Photo credit: Travis Caperton

### In this month's newsletter:

- [News and Announcements](#)
- [Profiles in Open](#)
- [Research Libraries Updates](#)
- [Exhibits](#) in the UL
- UL [Programs and Workshops](#)

## News and Announcements

### **Nature Journals Update**

Access (2020-present) to additional *Nature* titles announced in the September newsletter has been enabled, effective immediately. The new *Nature* titles are *Energy*, *Microbiology*, *Machine Intelligence*, *Metabolism*, *Cancer*, *Food*, *Aging*, *Computational Science*, *Cardiovascular Research*, and *Synthesis*. The new *Nature Reviews* titles are *Materials*, *Physics*, *Earth & Environment*, *Methods Primers*, and *Psychology*. Effective



January 2023, *Nature Mental Health*, *Nature Water*, and *Nature Reviews Bioengineering* will also be available.

## Project Muse Ebooks

Over 65,000 ebooks from a wide variety of university, society, institute, and small press publishers are now accessible in the Libraries catalog or on the Project Muse platform.



## SCIMAGO INSTITUTIONS RANKINGS

[Scimago Institutions Rankings](#) provides annually updated international rankings data for research institutions including government, health, higher education, and private institutions. SIR's assessment tools create standardized characteristics for ranking purposes that quantify metrics such as research performance and outputs, innovation, and societal impact using a wide range of bibliometric, publishing, industry, and web traffic data. SIR allows researchers to view data on specific institutions as well as rank and compare institutions within a variety of categories. These rankings and comparison data are also available for export and can be easily downloaded as a .csv file. More information on SIR's methodology can be found on their [website](#), along with ready-to-use [infographics](#).

## Nightmare on Research Street

The fifth annual Nightmare on Research Street, co-hosted by [Graduate Student Life](#) and [University Libraries](#), occurred on Halloween. This annual event features stories from real students and researchers about file loss and near misses, in a terrifying Halloween-themed format with prizes, pizza, and costumes. This year's People's Choice for Instagram went to Rachel Koch (undergraduate intern at the South Central Climate Adaptation Science Center) for her [classic meme](#). People's Choice for Twitter was Emily Troyer (graduate student in Biology) for her video [showing how data monsters could eat her unsaved files](#). Finally, the random prize winner for social media entries was Tiffany Legg, who impressively [rhymed a tale of data loss!](#)

---

## Profiles in Open

University Libraries regularly features OU scholars publishing open access.

**Chad Davis, PhD**  
**Instructor and Recruitment Coordinator**  
**School of Electrical and Computer Engineering**



[This month's Profile in Open](#) features Dr. Chad Davis, Instructor and Recruitment Coordinator in the [School of Electrical and Computer Engineering](#). Here he discusses how creating OER improves teaching and learning experiences, ensuring specific topics are well-covered, while also saving students money.

Visit his profile to read about his experiences with [open educational resources](#) (OER).

---

## Research Libraries Updates

Each month, UL will provide the latest national and global news in academic research libraries and resources.

### U.S. Judge Says Penguin Random House Book Merger Cannot Go Forward

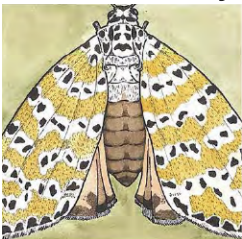
A planned \$2.2 billion merger of Penguin Random House, the world's largest book publisher, and rival Simon & Schuster cannot go forward, [a U.S. judge has ruled](#). Judge Florence Pan of the U.S. District Court for the District of Columbia, said in a brief order on Monday that she found the Justice Department had shown the deal may substantially lessen competition "in the market for the U.S. publishing rights to anticipated top-selling books."

---

## Exhibits at the University Libraries

### Drawing the Natural World

**Fine Arts Library, Through December**



Collaborating with many members of the museum, including generous support from the ethnology and vertebrate paleontology departments, OU art students closely studied and sketched specimens from the Sam Noble Museum's extensive collections. The fascinating work in this show was created by current and past students, along with other friends of the class

### Contemporary Native American Authors

**Bizzell Main Floor, Through December**

To honor Indigenous People's Month, University Libraries curated an exhibit of a

number of the most important Native American authors. A number, including LeAnne Howe, are included in the collection of the same name in the UL's Western History Collections.

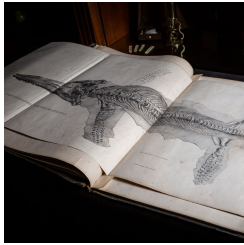
## **Political Resistance in Latin American**

**Bizzell Main Floor, Through December**

Created in collaboration with Dr. Sarah Hines, assistant professor of history. The history of Latin America has been marked by repression but also successful political resistance. Dr. Hines presents two examples of popular uprisings in response to the privatization of public goods and land as well as the repression of indigenous communities.

## **Mother of Dragons: The Life and Discoveries of Mary Anning**

**Bizzell Main Floor, Through August 2023**



In celebration of the University Libraries' new acquisitions of Hugh S. Torrens' collection in the History of Science Special Research Collections, we honor the impact of Mary Anning's fossil discoveries in Lyme Regis in the early 1800s on the history of geology in this exhibit.

---

## **Upcoming Events and Workshops**

For a list of all upcoming UL events, visit [our events page](#).

### **Open Practices, Community-Based Research, and Social Responsibility**

**November 18, 10:00 - 11:30 a.m., Zoom**

[Registration required](#). Join us for a virtual panel discussion in celebration of [International Education Week](#), featuring three leaders in the global advancement of open research practices, who co-authored the 2020 Canadian Commission for UNESCO [brief](#) "Open Science Beyond Open Access: For and with Communities, a Step Towards the Decolonization of Knowledge." This event is co-sponsored by the Office of the Senior Vice President and Provost, Office of the Vice President for Research and Partnerships, Boren College of International Studies, Rainbolt College of Education, and the Native Nations Center.

### **Data Carpentry for the Social Sciences**

**November 21 - 22, 9:00 a.m. - 4:30 p.m., Bizzell LL123**

[Registration required](#). [Data Carpentry](#) is a two-day workshop designed to teach beginning computing skills and best practices to faculty, staff, and students. This introductory workshop will cover how to incorporate better practices when working with data and to strengthen data management skills. Questions? [Contact Mark Laufersweiler](#).

### **Repetitive Tasks in R**

**November 29, 1:00 - 3:30 p.m., Online**

[Registration required](#). Learning how and when to automate tasks makes your research workflow more efficient, more reproducible, and less error-prone. This workshop is an

active learning "code-along" overview of how to automate repetitive tasks while programming in R. Repetitive tasks can include performing the same calculation, set of tasks, or import on multiple datasets or R objects.

---



---

*Copyright © 2022  
All rights reserved.*

**Our mailing address is:**  
401 W. Brooks St.  
Norman, Oklahoma 73019

**Questions?**  
Email us at [libpr@ou.edu](mailto:libpr@ou.edu)

Want to change how you receive these emails?  
You can [update your preferences](#) or [unsubscribe from this list](#).