

Celebrating Our
Golden Anniversary

1907 - 1957

Fifty Years of Medical Progress



The
BULLETIN

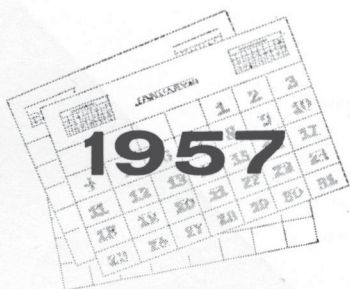
OF THE

Tulsa County Medical Society

May, 1957

Vol. 23

No. 5



for faster and higher

initial tetracycline blood levels

now... the new phosphate complex of tetracycline

SUMYCIN

Squibb Tetracycline Phosphate Complex

the broad clinical spectrum of SUMYCIN against pathogenic organisms

Large Viruses		Gram Negative Bacteria										Gram Positive Bacteria			
Rickettsia	Proteus	Shigella	Salmonella	Coliforms	Hemophilus	Neisseria	Streptococci	Staphylococci	Pneumococci	Spirochetes	Endamoeba histolytica	Actinomycetes			

SUMYCIN

the new phosphate complex of tetracycline

SUMYCIN

a single antibacterial antibiotic

SUMYCIN

a well tolerated antibiotic

SUMYCIN

a true broad spectrum antibiotic

Minimum adult dose: 1 capsule q.i.d.
 Each Sumycin capsule contains the equivalent
 of 250 mg. tetracycline hydrochloride.
 Bottles of 16 and 100.

SQUIBB



Squibb Quality - the Priceless Ingredient

SUMYCIN IS A SQUIBB TRADEMARK

outmoding older concepts...

the full-range tranquilizer with markedly enhanced potency

NEW Trilafon*
(pronounced Tril'-a-fon) perphenazine

EQUALLY VALUABLE IN

*hospitalized psychotics
agitated ambulatory psychoneurotics
anxiety and tension states*

- potency increased 5-fold over chlorpromazine
- therapeutic index up 10-fold over chlorpromazine
- jaundice notably infrequent in studies to date
- significant hypotension virtually absent
- no agranulocytosis reported
- skin photosensitivity neither observed nor elicited experimentally
- nasal congestion uncommon
- mild insomnia and motor restlessness infrequent

unexcelled as a potent antiemetic

Dosage: For specific information concerning dosage, side effects, precautions and contraindications consult Schering literature, available on request.

Packaging: TRILAFON Tablets: 2, 4 and 8 mg., bottles of 50 and 500.
TRILAFON Tablets: 16 mg. (for hospital use), bottle of 500.

*T.M. TR-J-647

Schering



for quicker recovery

STRESSCAPS*

Stress Formula Vitamins Lederle

STRESSCAPS provide adequate vitamin supplementation for patients suffering from prolonged stress—surgery, burns, fractures, trauma or shock.

Stress Formula Vitamins promote wound healing, and stimulate antibody production as well as providing a nutritional reserve of water-soluble vitamins.



dry-filled sealed capsules (a Lederle exclusive!) for more rapid and complete absorption.

LEDERLE LABORATORIES DIVISION, AMERICAN CYANAMID COMPANY, PEARL RIVER, NEW YORK



*REG. U.S. PAT. OFF.



Prescribe with Confidence

That your patients will receive exactly what the doctor ordered from our stock of fresh drugs at fair and popular prices.

*Your Guarantee
of Reliable Prescription Service*

T. ROY BARNES DRUGRY

603 S. BOULDER
Downtown

44 N. HARVARD
East Side

Three

MODERN STORES

to meet your every
prescription need

DOWNTOWN
Sixth and Main

Telephone DI 3-6171
OUR ORIGINAL STORE

EASTSIDE
4624 East 11th

Telephone WE 2-2367
EFFICIENT SERVICE

SOUTHSIDE
1831 East 21st

Telephone RI 2-7304
OUR NEW STORE

We Deliver

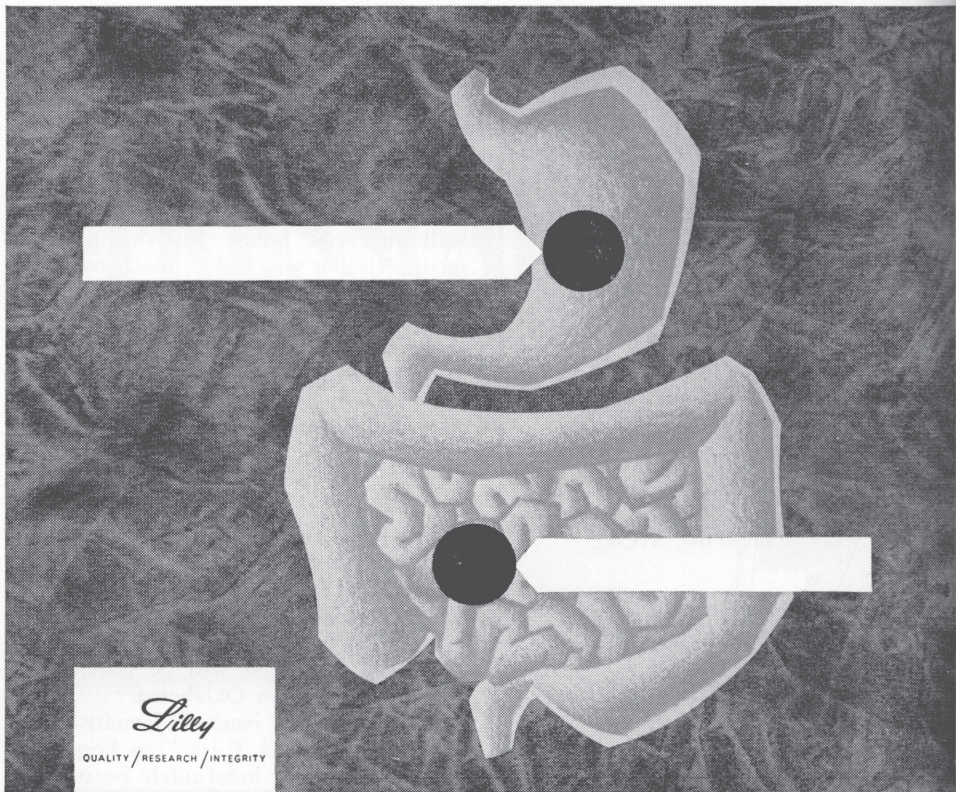
GETMAN'S

PRESCRIPTION SPECIALISTS

ROY R. GETMAN, Founder

With The Editor . . .

Congratulations to Dr. Malcom E. Phelps of El Reno upon his recent inauguration as President of the American Academy of General Practice . . . It is a well deserved honor for the popular medical leader which does much credit to Oklahoma Medicine . . . To bolster its legislative activities the American Medical Association has approved a program of "key men" in each of the 48 states . . . An influential and active doctor in each state will be asked to serve as a modern minute man on current legislative problems . . . He will be responsible for organizing other doctors to encourage desirable legislation and combat undesirable proposals in Congress . . . Members of the AMA Legislative Committee will serve in their own states . . . AMA Legislative Committee Member Dr. John E. McDonald of Tulsa will be responsible for the program in Oklahoma . . . Business Week, in its issue of January 19th, stated that because Tulsa "can keep taking large industry indefinitely because of its water potential, Tulsa has a good chance to outstrip Oklahoma City" . . . With so many similar predictions, as well as encouraging predictions for the general growth of Tulsa, there is a marked need for long term planning of Tulsa medical facilities . . . Professional office space and, to a large extent, hospital beds will be ample for the immediate future . . . But more long-range planning could produce more specialized hospital facilities, medical research workshops, a medical society building, and possibly a medical school in connection with the University of Tulsa . . . Another need, soon to be felt as the average span of life increases, will be facilities to care for the aged . . . As well as a planned program of activities to keep them from mental deterioration . . . In its first three months of operation Medicare paid Oklahoma doctors a total of \$111,116.72 on 1,934 claims . . . Be sure to register at the Annual Meeting of the Oklahoma State Medical Association in Tulsa, May 6-8 . . . Tulsa doctors can help make it a record attendance.



Twin benefits in peptic ulcer therapy

ELORINE CHLORIDE

(Tricyclamol Chloride, Lilly)

Reduces gastric acidity and gastro-intestinal motility

Dosage should be tailored to the patient's tolerance. In peptic ulcer, the average adult dose ranges from 100 to 250 mg. three or four times daily.

'Elorine Chloride' is now available in pulvules of 50 and 100 mg.

'Elorine Chloride' effectively decreases gastric secretion and reduces motility of the gastro-intestinal tract (but not of the esophagus). Thus, it is especially valuable in peptic ulcer therapy. In one phase of a comprehensive study¹ of anticholinergic agents, 'Elorine Sulfate'* was shown to reduce gastric acidity to pH 4.5 or higher in all sixteen patients. This reduction was maintained from thirty to more than 270 minutes, and in nine of the sixteen patients it lasted longer than three hours.

1. Sun, D. C. H., and Shay, H.: A.M.A. Arch. Int. Med., 97:442, 1956.

*'Elorine Sulfate' (Tricyclamol Sulfate, Lilly)

ELI LILLY AND COMPANY • INDIANAPOLIS 6, INDIANA, U. S. A.

768010

THE BULLETIN

OF THE

TULSA COUNTY MEDICAL SOCIETY

G. R. Russell, M.D., *President*Hugh Perry, M.D., *President-Elect*Walter B. Sanger, M.D., *Vice-President*Walter E. Brown, M.D., *Sec.-Treasurer*Jack Spears, *Executive Secretary*

Vol. 23

TULSA, OKLAHOMA, MAY, 1957

No. 5

CONVENTION MAY DRAW 900 DOCTORS

Arrangements Complete for Annual Meeting of Oklahoma State Medical Association in Tulsa, May 6-8.

As this issue of The Bulletin went to press final arrangements for the Semi-Centennial Annual Meeting of the Oklahoma State Medical Association in Tulsa, May 6-8, 1957, were virtually complete. Dr. Walter E. Brown, General Chairman, predicted that 900 Oklahoma doctors would attend the three-day program of scientific and social events.

Highlights of the 1957 convention will include:

1. An outstanding scientific program, prepared under the direction of Dr. Edward L. Moore, featuring 27 papers in various fields of medicine presented by eleven visiting distinguished guest speakers and by members of the Oklahoma State Medical Association. The program will also include two special symposiums, one on gastro-intestinal bleeding and one on hematological problems.

2. A closed circuit television presentation emanating from Chicago, Illinois, on the subject, "The Physician and Emotional Disturbance." Scheduled for Monday, May 6, at 1:00 P.M., it will feature four nationally known psychiatrists and general practitioners as guest panelists.

3. Forty commercial exhibits by leading manufacturers of pharmaceuticals, surgical supplies, x-ray equipment, medical books and journals, and other products and services of interest to physicians.

4. The President's Inaugural Dinner Dance on Tuesday, May 7, featuring the music of Shep Fields and His Rippling Rhythm, nationally known dance band and recording artists.

5. A complimentary shore dinner on Monday evening, May 6, tendered by the Blue Cross-Blue Shield Plans of Oklahoma. Fresh oysters, shrimp and lobster will be served buffet style in the Auditorium of the Blue Cross-Blue Shield Building from 6:00 P.M. to 9:00 P.M.

6. The Annual Golf Tournament and Dinner of the Oklahoma State Medical Association at Tulsa Country Club on Wednesday, May 8, with convention registrants guests of Pfizer Laboratories for golfing, social hour and dinner.

7. Roundtable luncheons on Monday and Tuesday, May 6-7, with visiting guest speakers participating in question-and-answer sessions.

8. A display of attractive scientific exhibits prepared by physicians and organizations allied with the medical profession will be seen throughout the convention in the Ivory Room of The Mayo.

9. A reprise of the popular Doctors Hobby Show seen in Oklahoma City last year will feature an exhibition of paintings, sculpture, collections, and other hobbies of Oklahoma doctors.

10. The annual business meeting and election of officers at the House of Delegates of the Oklahoma State Medical Association on Sunday, May 5, at 1:00 P.M. Dr. David B. Allman, President-Elect of the American Medical Association, will report on the status of national medical matters in an address to the House tentatively scheduled for 3:30 P.M.

11. A program of fourteen medical and surgical motion pictures in sound

and color to be shown Monday and Tuesday mornings, May 6-7, at The Mayo.

12. Related meetings of specialty groups immediately preceding the opening of the regular convention program. Most such meetings are scheduled for Saturday and Sunday, May 4-5.

13. A program of business and social events for visiting wives and daughters at the annual meeting of the Women's Auxiliary to the Oklahoma State Medical Association, May 5-7, at The Mayo.

14. A tennis tournament for physicians, to be held for the first time, with doctors playing on the five new Rubicon courts of the Tulsa Tennis Club on Tuesday and Wednesday, May 7-8.

"We believe the scientific program for the convention is one of the best in the Association's history," said Dr. Edward L. Moore, Program Chairman, last month. "Our guest speakers have been carefully selected from the most prominent medical personalities and the wide selection of medical and surgical topics offers invaluable instruction to the practicing physician."

A complete program has been mailed to all Oklahoma doctors and also appears in the April issue of The Journal of the Oklahoma State Medical Association.

Speaking at the April 8th meeting of the Tulsa County Medical Society, Dr. Walter E. Brown, General Chairman, urged all Tulsa doctors to register at the convention and attend as many of

the sessions as possible. He noted that it was often difficult for local doctors to get away from their professional duties and suggested the necessary time be reserved well in advance on appointment calendars. Dr. Brown also paid tribute to Dr. Moore for the excellent scientific program and to other committee chairmen for their contributions to the annual meeting.

The closed circuit medical television presentation originally scheduled for 2:00 P.M. on Monday, May 6th, has been rescheduled for 1:00 P.M. on the same day. Dr. C. Knight Aldrich, Professor of Psychiatry at the University of Chicago School of Medicine, Chicago, Illinois, will replace a previously announced panelist, Dr. Howard P. Rome of Rochester, Minnesota.

A brisk advance ticket sale to the President's Inaugural Dinner Dance of Tuesday evening, May 7, was reported last month by Dr. Jack L. Richardson, Social Chairman. Noting that only the capacity of the Crystal Ballroom of The Mayo would be sold, Dr. Richardson urged early purchase of dinner dance tickets to avoid disappointment. Tickets may be ordered from the Tulsa County Medical Society, B9 Medical Arts Building, Tulsa. The price of \$7.50 includes the social hour, dinner, inaugural program and dance.

Dancing will be at the Cimarron Ballroom, 4th and Denver streets, which has been reserved for the exclusive use of the Association. The Shep Fields Orchestra will be on the bandstand at 9:00 P.M. and dancing will continue to 1:00 A.M.

No reservations or tickets are necessary for the complimentary shore dinner at the Blue Cross-Blue Shield Building on Monday evening, May 6. A seafood menu of lobster, shrimp and oysters will be served buffet style from 6:00 P.M. to 9:00 P.M. There will be no formal program. The dinner, compliments of the Blue Cross and Blue Shield Plans of Oklahoma, will be prepared and served by The Louisiane, one of Tulsa's finer seafood restaurants.

Reservations are suggested for the Annual Golf Tournament and Dinner to be

(Continued On Page 38)

DINNER DANCE TICKETS

Tickets for the President's Inaugural Dinner Dance of Tuesday, May 7th, a feature of the 1957 Annual Meeting of the Oklahoma State Medical Association in Tulsa, are now on sale in the Executive Offices of the Tulsa County Medical Society, B9 Medical Arts Building. The price is \$7.50 per person, including social hour, dinner, inaugural program, and four hours of dancing to the Rippling Rhythm of Shep Fields and His Orchestra. Tickets may be ordered by telephone and will be mailed with an accompanying statement.

AMONG CONVENTION SPEAKERS



RUSSELL J. BLATTNER, M.D.
Houston, Texas
Pediatrics



GEORGE C. GRIFFITH, M.D.
Los Angeles, California
Medicine



CLAUDE S. BECK, M.D.
Cleveland, Ohio
Surgery



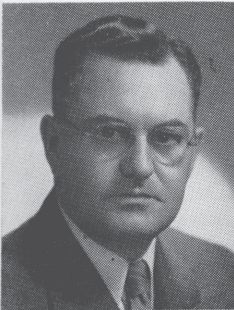
JOHN W. GOFMAN, M.D.
Berkeley, California
Medicine



PAUL C. SWENSON, M.D.
Philadelphia, Pennsylvania
Radiology



WILLIAM DAMESHEK, M.D.
Boston, Massachusetts
Medicine



JOHN S. LUNDY, M.D.
Rochester, Minnesota
Anesthesiology



MICHAEL K. O'HEERON, M.D.
Houston, Texas
Urology



ROBERT A. COSGROVE, M.D.
Jersey City, New Jersey
Obstetrics & Gynecology

CONVENTION AT A GLANCE

SATURDAY MAY 4, 1957

7:00 P.M. Council Dinner Meeting, Ivory Room, the Mayo.

SUNDAY, MAY 5, 1957

1:00 P.M. House of Delegates Meeting, Pompeian Room, The Mayo.
 3:30 P.M. Address by Dr. David B. Allman, President-Elect, American Medical Association, Atlantic City, N. J., Pompeian Room, The Mayo.

MONDAY, MAY 6, 1957

8:00 A.M. General Registration Opens, Lobby, The Mayo.
 8:30 A.M. Medical Motion Pictures, Emerald Room, The Mayo.
 8:55 A.M. Scientific Session, Crystal Ballroom, The Mayo.
 12:30 P.M. Roundtable Luncheon, Pompeian Room, The Mayo.
 1:00 P.M. Closed Circuit Television Presentation, Crystal Ballroom, The Mayo.
 2:00 P.M. Scientific Session—Section Two, Emerald Room, The Mayo.
 3:10 P.M. Scientific Session—Section One, Crystal Ballroom, The Mayo.
 6:00 P.M. Complimentary Shore Dinner, Blue Cross-Blue Shield Building.

TUESDAY, MAY 7, 1957

8:30 A.M. Medical Motion Pictures, Metropolitan Room, The Mayo.
 8:40 P.M. Scientific Session, Crystal Ballroom, The Mayo.
 12:30 P.M. Roundtable Luncheon, Pompeian Room, The Mayo.
 2:00 P.M. Symposium On Gastro-Intestinal Bleeding, Crystal Ballroom, The Mayo.
 2:00 P.M. Scientific Session, Emerald Room, The Mayo.
 6:30 P.M. President's Inaugural Dinner Dance, Social Hour, Pompeian Room; Dinner, Crystal Ballroom; Dancing, Cimarron Ballroom.

WEDNESDAY, MAY 8, 1957

8:30 A.M. Scientific Session, Crystal Ballroom.
 9:45 A.M. Symposium On Hemotological Problems, Crystal Ballroom.
 12:00 Noon Annual Golf Tournament, Tulsa Country Club.
 6:00 P.M. Social Hour and Dinner, Annual Golf Tournament, Tulsa Country Club.



THEY DIRECT CONVENTION PROCEEDINGS

Officials of the Semi-Centennial Annual Meeting of the Oklahoma State Medical Association in Tulsa, May 6-8, 1957, are (left to right): Dr. Walter E. Brown, General Chairman; Dr. Edward L. Moore, Program Chairman; Dr. E. N. Lubin, Publicity Chairman; and Dr. Jack L. Richardson, Social Chairman. Not pictured are Dr. Donald L. Brawner, Commercial Exhibit Chairman; Dr. Robert Hall Johnson, Golf Chairman; and Dr. Robert E. Funk, Hotels and Registration Chairman.



THE MEDICAL LIBRARY

Library of the Tulsa County
Medical Society



Miss Irma A. Bechler, *Librarian*

GIFTS OF THE MONTH—:

Arthritis and Rheumatism Foundation of Eastern Oklahoma, Inc. The following volumes:

Joint Ligament Relaxation Treated by Fibro-Osseous Proliferation; With Special Reference to Low Back Disability, Trigger Point Pain, Referred Pain and Sciatic-tendon Relaxation. By George Stuart Backet, M.D., F.A.C.S., Consulting Surgeon, Mercy Hospital, Canton, Ohio. Second Edition. 115 pp., illustrated, bibliography. Charles C. Thomas, Publisher, Springfield, Illinois, 1957.

Ciba Foundation Symposium on Bone Structure and Metabolism. Editors for the Ciba Foundation: G. E. W. Wolstenholme and Cecilia M. O'Connor. 299 pp., illustrated. Little, Brown & Company, Boston, Massachusetts, 1956.

Ciba Foundation Symposium on Paper Electrophoresis. Editors for the Ciba Foundation: G. E. W. Wolstenholme and Elaine C. P. Millar. 224 pp., illustrated. Little, Brown & Company, Boston, Massachusetts, 1956.

Rheumatic Diseases, Rheumatism and Arthritis. By Heinrich G. Brusch, M.D., F.A.C.P., Assistant Professor of Medicine, School of Medicine, Tufts University; Physician-In-Charge, Arthritis Clinic of the Boston Dispensary. 330 pp., illustrated, bibliography. J. B. Lippincott Company, Philadelphia, Pennsylvania, 1955.

Jefferson Medical College of Philadelphia. Yellow Fever; A Symposium In Commemoration of Carlos Juan Finley. September 22-23, 1955. 101 pp., illustrated. Jefferson Medical College of Philadelphia, Pennsylvania, 1955.

Josiah Macy Foundation, New York, N. Y. When Doctors Meet Reporters. A frank discussion by science writers and physicians on relations between the press and the medical profession. 119 pp., New York University Press, 1957.

RECENT ACQUISITIONS—:

Directory Of Medical Specialists, Holding Certification by American Specialty Boards. Volume 8, including latest listings, sketch additions and alphabetical index. Published for the Advisory Board for Medical Specialties by A. N. Marquis Company-Who's Who, Chicago, Illinois, 1957.

FIRST MEDICAL HOSPITALS IN TULSA (Continued)

The Oklahoma Hospital was granted a charter in December, 1915, for the care of the sick and to maintain a training school for nurses. The authority was given to issue certificates of efficiency or diplomas to the graduates. The first officers of this new hospital were Dr. Fred S. Clinton, President; H. J. Brickner, Vice-President; Miss H. C. C. Ziegler, Superintendent; and L. Magnuson, Secretary-Treasurer.

Property was purchased in Riverview and Norvell Park additions in the name of Joe P. Byrd, Jr. Construction work was started immediately although this was during World War I when all contracts had to be carefully scrutinized so there would be no waste of materials. Work progressed so well that patients were moved into the new building in June, 1916, although some work still remained to be done.

It was this Oklahoma Hospital which served a great need during the unfortunate race riot which occurred in Tulsa in 1921. Dr. J. C. Bland and the two residents, Dr. L. H. Carleton and Dr. Lytle Atherton gave emergency service during this unhappy time.

—Chronicles of Oklahoma, Spring, 1944.

PRESIDENT'S PAGE

In a survey of the medical horizon for new fields to conquer one's attention is immediately focused on the extremes of the life span.

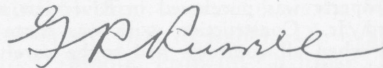
According to Bundeson the epidemic of today is not poliomyelitis or any other epidemic disease but the needless loss of newborn infants. Certain, it is, that the process of being born is the most important as well as the most hazardous in each of our lives. The birth process of premature infants is especially hazardous which would indicate that much is to be gained by preventing prematurity itself as well as by creating conditions favorable to the survival of the premature infant.

At the present time in this country there are four million live births annually with an average of 20 deaths in the first week of life, or 80,000 newborn deaths in all. Bundeson reports this figure can and should be reduced to 10 deaths per 1,000 live births with a consequent savings of 40,000 lives annually, enough to compensate for the total loss of life annually from motor accidents. Much needs to be done on a state, local and national level to explore and evaluate this possibility.

At the other end of the life span which, according to extensions of present trends, will show a life expectancy of easily 100 years in the course of a few decades, much needs to be done to reduce the degree of pure vegetation in these individuals. This will come about by the reduction of atheromolious changes in the vessels to the brain and heart particularly. More or less complete eradication of malignancy is essential in this group and might be just around the corner.

These are matters of interest which would profit from our serious consideration.

Sincerely,



President

hypnosis or sedation with increased safety

Medomin[®]

Unique in chemical configuration, Medomin (heptabarbital Geigy) is metabolized more completely than conventional barbiturates, thus avoiding the danger of cumulation in fatty tissue.

Dosage: Hypnotic, 200-400 mg.; sedative, 50-100 mg. two or three times daily.

Scored tablets of 50 mg. (pink), and 200 mg. (white). Literature and samples available on request.

Geigy, Ardsley, New York



Geigy

Since 1916 . . .

al MUSICK DRUG

NORTH AND WEST

Store Number One

529 NO. DENVER

Telephone

LU 4-7288

||
City-Wide Delivery
||

NORTH AND EAST

Store Number Two

APACHE & GARRISON

Telephone

DI 3-3003



Pictured above is the spacious new lobby and waiting room on the ground floor of the new 200-bed wing of St. John's Hospital.

ST. JOHN'S OPENS NEW ADDITION

A Medical Feature

St. John's Hospital of Tulsa last month placed into operation its new six-story 200-bed west wing. Built at a cost of \$2,703,000, exclusive of equipment and furnishings, it was under actual construction for more than a year.

The Hospital has now embarked upon a remodeling program in older portions of the building to provide a new pathology laboratory, premature nursery, record room, and physical therapy department. Additional renovations in the x-ray building are being made to accommodate a new cobalt machine and several new diagnostic and therapeutic machines.

Highlight of the newly opened wing is the spacious Surgery on the sixth floor. It comprises sixteen general operating rooms and two fracture rooms. With the emergency operating room on the ground floor, it will permit nineteen operations to be in progress at one time.

All of the operating rooms have been equipped with the most modern tables

and lighting facilities, and many contain portable x-ray installations. Every known safety precaution to prevent anesthesia explosion and other types of accident, including carbon black terrazzo floors, shock-proof switches, and shock-proof outlets, have been installed. Most operating rooms are sizeable, permitting observation by the house staff without undue crowding. An attractive doctors lounge, showers and locker room (with individual lockers for 140 staff members) are immediately adjacent to the new Surgery.

The new wing also contains an attractive Outpatient Department with ten general examination rooms, an EENT examining room, and an emergency operating room. These facilities have permitted an increase in the number of regularly scheduled clinics, long needed as an adjunct to the Hospital's program of intern and resident training.

The addition also houses a Central

Supply, which includes a central receiving office, central storage facilities, and a central purchasing office. These have been arranged to permit an orderly receipt, storage and distribution of basic supplies.

The fifth floor is utilized for medical patients, the fourth for obstetrical patients, and the third for surgical patients. The second floor is devoted to a plushy psychiatric department with beds for forty patients, a diagnostic laboratory (includ-

ing electro-encephalogram and electro-stimulator), case history record rooms, and patient lounges (furnished with sleek modern furniture, tasteful drapes and attractive pastel walls).

The ground floor contains the Out-patient Department, Emergency Room (with new ambulance entrance), and administrative offices. A large waiting room is expected to permit greater controls over visiting hours.

A Cardiac Laboratory is equipped with all types of diagnostic machines of the latest manufacture, some furnished through the Tulsa County Heart Association, and is expected to greatly enlarge the scope of cardiology in the Hospital.

The new St. John's wing is a T-shaped structure extending 116 feet west from the center of the older building. It is heated and cooled by a new 800-ton Westinghouse unit installed last summer in the basement of the Main Building. Another 100-ton unit was already in operation, and the total of 900 tons air conditions the entire hospital.

Two new electric elevators have been installed in the new addition and will be used primarily to handle the heavy flow of visitor traffic in the afternoon and evening visiting hours.

Workmen were busy last month remodeling the Waite Phillips Memorial Building of St. John's, which houses the x-ray department. A new doctors cloakroom, doctors workroom, and record room is also under construction on the ground floor. The old Surgery is being converted into attractive new quarters for the pathology department, and the present pathology space will eventually be used for additional pediatric beds.

Opening of the wing is the latest in a series of building projects for the Hospital which have already included a new kitchen and laundry building and a 225-car parkade located on the East side of the Hospital facing on 21st street.

Equipment for the new addition is estimated at a cost of \$300,000, bringing the total cost of the unit to over three million dollars. Construction and equipment costs were largely met through a public solicitation conducted during the last three years.

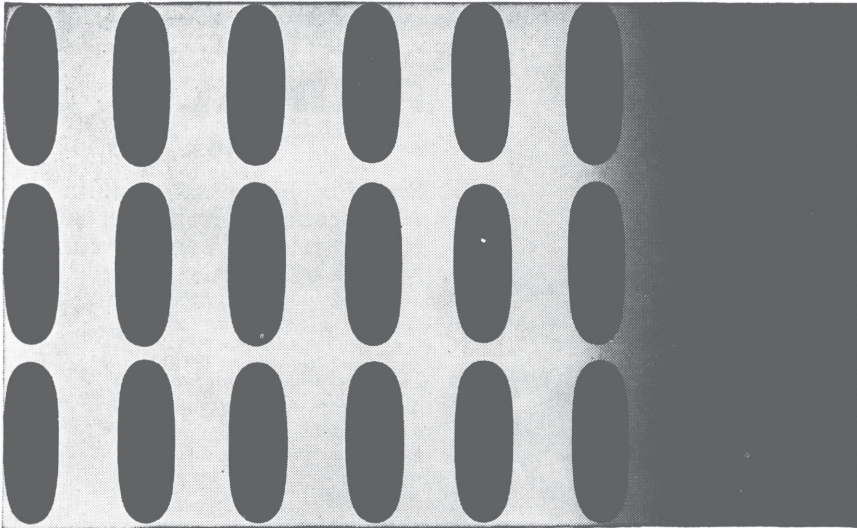
WALTER B. SANGER, M.D.
1912-1957

Dr. Walter B. Sanger, 45, prominent Tulsa obstetrician and Vice-President of the Tulsa County Medical Society, died April 12, 1957. Death was attributed to coronary thrombosis. He had not been previously ill.

Born in Yukon, Oklahoma, Dr. Sanger was a graduate of the University of Oklahoma School of Medicine, Class of 1935. He interned at Sacred Heart Hospital of Spokane, Washington, and for several years was a general practitioner at Yukon and at Picher, Oklahoma. At one time he was a staff physician at Eastern Oklahoma Hospital in Vinita. Following service in the United States Navy during World War II, Dr. Sanger completed a three-year residency in obstetrics and gynecology at Bon Secours Hospital of Baltimore, Maryland. Since 1949 he had practiced in Tulsa with offices in the Medical and Dental Arts Building.

Dr. Sanger's work as Chairman of the Legislative Committee of the Tulsa County Medical Society for several years led to his election as Vice-President earlier this year. He was President of the Tulsa Obstetrical and Gynecological Society and a member of the Oklahoma City Obstetrical and Gynecological Association.

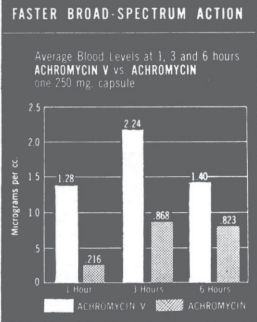
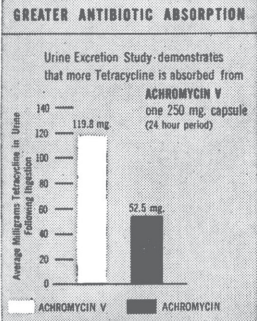
Survivors include the widow and seven children.



NEW...

ACHROMYCIN*V

TETRACYCLINE BUFFERED WITH SODIUM METAPHOSPHATE



CHEMICALLY CONDITIONED FOR GREATER ANTIBIOTIC EFFICIENCY

ACHROMYCIN V admixes sodium metaphosphate with tetracycline. ACHROMYCIN V provides greater antibiotic absorption/faster broad-spectrum action and is indicated for the prompt control of infections, seen in everyday practice, hitherto treated with other broad-spectrum antibiotics.

CAPSULES

Each capsule (pink) contains tetracycline equivalent to 250 mg. tetracycline HCl, phosphate buffered.

SYRUP

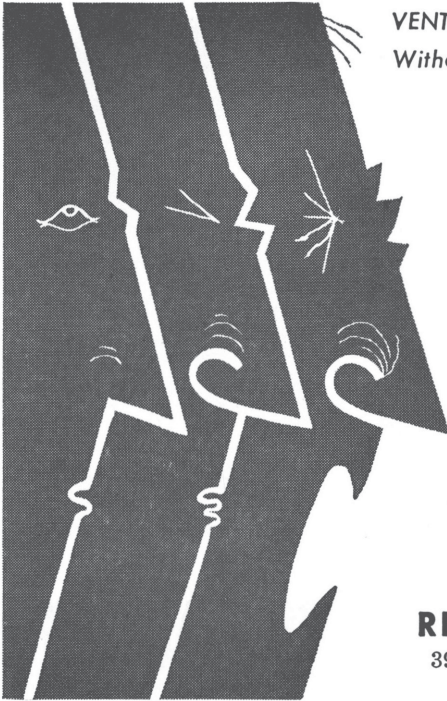
Each teaspoonful (5 cc.) of orange-flavored Syrup contains 125 mg. of tetracycline HCl activity, phosphate buffered.

ACHROMYCIN V dosage: 6-7 mg. per lb. of body weight per day for children and adults.

*Reg. U. S. Pat. Off.

LEDERLE LABORATORIES DIVISION
AMERICAN CYANAMID COMPANY
PEARL RIVER, NEW YORK





VENTILATION AND DRAINAGE
 Without Irritation of the Ciliated Epithelium

RHINALL

nose drops

Safe for children and adults
 No burning or irritation
 No bad taste or after-reactions
 No risk of sensitization

Contains:
 Phenylephrine Hydrochloride 0.15 %
 "Propadrine" Hydrochloride 0.3 %
 in an isotonic saline menstrum

For convenience, also
 available in 1/2 ounce plastic
 spray bottle



RHINOPTO COMPANY

3905 Cedar Springs • Dallas, Texas
 Ethical Specialties for the Profession

*Hospitality Is An Art
 Coke Makes It So Easy*



DRINK
Coca-Cola

REG. U.S. PAT. OFF.

Medicare

Questions and Answers About The New Medical Care Program For Dependents of Military Personnel

Oklahoma's Medicare Program, providing medical care for dependents of military personnel as provided by federal law, has been generally well received by physicians of the State, a study conducted last month indicates.

Officials of the Oklahoma State Medical Association, administrators of the plan, said most difficulties with physicians regarding services covered and fees paid stemmed from the doctor's inexperience with the program. Dr. H. H. Macumber of Chickasha, Chairman of the Medicare Committee, urged all doctors to read carefully the Physicians' Manual entitled "Dependents Medical Care Program." Copies were sent to all Oklahoma doctors early in January.

Information on specific problems may be obtained by calling the Blue Shield Plan of Oklahoma, fiscal agent for the Program. All claims and payments for services are handled through the Tulsa office of this organization.

Some of the most frequently asked questions, and the answers to them, are noted below:

Q. I was providing prenatal care to a serviceman's wife at the time the Program went into effect on December 7, 1956. Do I charge the patient for services rendered before that date?

A. Yes, except that a recent ruling by the Department of Defense authorizes payment to you for care during the fraction of the trimester in effect as of December 7th. The Physicians' Manual contains a breakdown of the fees paid for the various elements of complete obstetrical care.

Q. Are medications administered by the physician to obstetrical patients covered?

A. Yes. This is also a new ruling of the Department of Defense.

Q. Are home and office calls for medical services covered?

A. Unfortunately, an error occurred in the printing of the Manual. Home and office calls are *not* covered, except for neonatal care, under the Program.

Q. Are consultations paid for?

A. Only while the patient is hospitalized.

Q. Is out-patient surgery covered?

A. No, except for treatment of fractures, lacerations or traumatic wounds. It should be remembered that, even though these accident cases are covered, there is a \$15.00 deductible that the patient must pay first. If the bill is less than \$15.00, do not report the case to the Medicare Program, but bill the patient directly. If it is more than \$15.00, bill the Medicare Program, but be sure and complete Block #26 on the claim form.

Q. What about care of the well newborn? Is it covered?

A. The original schedule provided for two office visits during the first sixty days. The Department of Defense has now agreed that one of these visits may be authorized while the mother is in the hospital. The authorized fee for the first visit, either in the hospital, home or office, is \$7.50. The second visit will pay \$5.00 in the home, \$4.00 in the office (not to exceed a total of two visits during first 60 days)

Q. Are laboratory services covered?

A. Yes, as specified by the Manual, but it is necessary to itemize these services. This will speed up payment.

Q. May I employ a surgical assistant with assurance that he will be paid by the Program for his services?

A. Yes, if deemed necessary by the surgeon. However, the payment is limited to 10 per cent of the surgical fee, without reference to length of time or anesthesia. The minimum fee for a surgical assistant is \$15.00.

Q. Suppose multiple surgical proce-

dues are performed through the same incision. Will I be paid for all in accordance with the fee schedule?

A. Except by special report, payment is made only for the major procedure. An additional 50 per cent of the minor fee will be allowed in cases in remote operative fields and special incisions.

Q. Suppose the patient specifically agrees to pay me a fee above the amount specified in the schedule. May I accept this additional sum directly from the patient?

A. No. This is a legal service contract, and you must accept no more for the stipulated services than the amount paid by the Program. If you do not wish to do this, reject the patient before rendering service.

Q. Does the law compel me to accept Medicare patients?

A. No. However, be sure that the patient will not suffer for want of medical care as a result of your refusal. You may open yourself to a malpractice case if the patient suffers. Generally speaking, only emergency cases requiring immediate attention would warrant your acceptance of the case against your wishes.

Q. Suppose the patient represents himself as being a qualified dependent and actually is not. Can I collect for my services?

A. Yes, but it is your responsibility to determine his eligibility. This is very easily done by requiring the patient to produce the official identification card issued to him by the Department of Defense.

Q. My patient wishes surgery for cosmetic purposes. There is no medical indication for it. Will I be paid if I perform it?

A. No. Elective surgery desired by the patient but not medically indicated in the opinion of the attending physician is not covered.

(Editor's Note: Revisions in the regulations for Medicare are being made by the Department of Defense from time to time. As this issue of The Bulletin went to press, the above information was correct. However, it is possible that changes may have been effected by the time this appears in print).

It's a girl for DR. and MRS. ROBERT L. ANDERSON, born March 16th.



"Timber!"

For your enjoyment—courtesy of Boyle & Company

Now **2** Cutter Polysal[®]s

FOR I. V. THERAPY

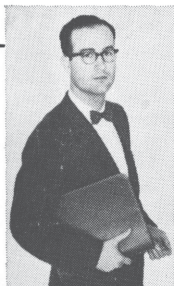
The addition of a new Polysal now provides balanced electrolyte solutions for both replacement and maintenance.

For REPLACEMENT

Polysal (REGULAR)

Balanced in terms of plasma electrolyte content, this high sodium solution is ideal in the treatment of dehydrated and depleted patients by replacing lost sodium and affecting *immediate* improvement in blood volume and circulatory status.

Talbot, N. B., Crawford, J. D., and Butler, A. M., "Homeostatic Limits to Safe Parenteral Therapy." *New Engl. J. Med.*, 248, 1100 (1953).



Ask your Cutter man why Cutter Polysals can mean a smoother recovery for your patient.

For MAINTENANCE*

Polysal M

Balanced in terms of daily body needs for electrolytes, carbohydrates and water, this *Maintenance* solution is ideal for patients whose oral intake of food and water is restricted.

Polysal-M prevents the development of serious deficits which may occur in patients needing prolonged I. V. therapy by supplying the daily requirements in *safe amounts*.



**SAW-TOOTH"
Effect Eliminated**

This single solution delivers a smooth, uniform infusion, free from sharp peaks caused by daily infusion of several different-type solutions — thus preventing over-loading, water intoxication, edema formation.

Simplify for Safety with



**Polysal &
Polysal-M**

For descriptive literature, write Dept.
CUTTER LABORATORIES, BERKELEY, CALIFORNIA

Prather's PRESCRIPTION SHOPS

·PRESCRIPTIONS
·SICK ROOM NEEDS

·PHARMACEUTICALS
·BIOLOGICALS

FREE PRESCRIPTION DELIVERY
TWO LOCATIONS TO SERVE YOU

TULSA'S ORIGINAL PRESCRIPTION
DRUG STORE

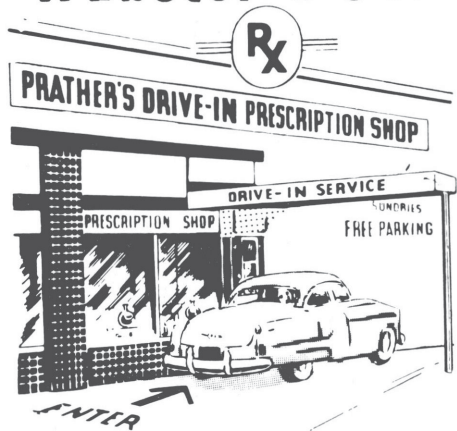
Gibson 7-0121



**MED ARTS Bldg.
106 W. 6th**

TULSA'S ORIGINAL PRESCRIPTION
DRIVE-IN STORE

Webster 9-5411



**3008 E. 15th
15th & COLLEGE**

MAY MEDICAL CALENDAR

FRIDAY, May 3rd:

St. John's Isotope Committee Meeting, St. John's Hospital, 8:30 A.M.
 St. John's Tumor Clinic, Clinical Conference, 9:30 A.M.
 X-Ray Conference, Hillcrest Medical Center, 3:30 P.M.
 Journal Club, Hillcrest Medical Center, 6:00 P.M. Subject: "Surgery of the Hand."
 Speakers, Drs. James W. Kelley, Jack L. Richardson, and Worth M. Gross.
 Medical Assistants Society of Oklahoma, Ninth Annual Meeting, opens at Hotel Tulsa,
 8:30 P.M. Continues through May 5th.

SATURDAY, May 4th:

Pathological Tissue Conference, Hillcrest Medical Center, 8:30 A.M.
 Council Meeting, Oklahoma State Medical Association, Ivory Room, The Mayo, 7:00 P.M.

SUNDAY, May 5th:

House of Delegates Meeting, Oklahoma State Medical Association, Pompeian Room, The Mayo, 1:00 P.M.
 Medical Telecast, "Medical Horizons" series, Television Station KTVX, 3:30 P.M.

MONDAY, May 6th:

Semi-Centennial Annual Meeting, Oklahoma State Medical Association, opens at The Mayo, 8:30 A.M.
 Complimentary Shore Dinner for Doctors and Wives, Blue Cross-Blue Shield Building, 6:00 P.M.
 Staff Meeting, Hillcrest Medical Center, 8:00 P.M.

TUESDAY, May 7th:

St. John's Tumor Clinic, 8:00 A.M.
 Interns and Residents Lecture, St. John's Hospital, 12:30 P.M. Subject: "Acute Injuries of the Hand." Speaker, Dr. Jack L. Richardson.
 Closed Circuit Television Presentation, Crystal Ballroom, The Mayo, 1:00 P.M. Subject: "The Physician and Emotional Disturbance."
 President's Inaugural Dinner Dance, Oklahoma State Medical Association, Crystal Ballroom, The Mayo, 6:30 P.M.

WEDNESDAY, May 8th:

St. John's Isotope Clinic, St. John's Hospital, 8:30 A.M.
 Annual Golf Tournament and Dinner, Oklahoma State Medical Association, Tulsa Country Club, 12:00 Noon.
 Clinical Pathological Conference, Hillcrest Medical Center, 7:30 P.M.

THURSDAY, May 9th:

Medical Section Meeting, St. John's Hospital, 8:30 A.M.
 Clinical Pathological Conference, St. John's Hospital, 8:30 A.M.
 Surgical Motion Picture, Hillcrest Medical Center, 12:30 P.M. Subject: "Ovarian Tumors."

FRIDAY, May 10th:

St. John's Isotope Committee Meeting, St. John's Hospital, 8:30 A.M.
 St. John's Tumor Clinic, Clinical Conference, 9:30 A.M.
 X-Ray Conference, Hillcrest Medical Center, 3:30 A.M.

SATURDAY, May 11th:

Pathological Tissue Conference, Hillcrest Medical Center, 8:30 A.M.

SUNDAY, May 12th:

Medical Telecast, "Medical Horizons" series, Television Station KTVX, 3:30 P.M.

MONDAY, May 13th:

No meeting of the Tulsa County Medical Society on this date.

TUESDAY, May 14th:

St. John's Tumor Clinic, 8:00 A.M.
 Pediatrics Section Meeting, St. John's Hospital, 9:00 A.M.
 Pharmaceutical Demonstration, Hillcrest Medical Center, 12:30 P.M.
 Interns and Residents Lecture, St. John's Hospital, 12:30 P.M. Subject: "Resuscitation."
 Speaker, Dr. Howard A. Bennett.
 Anesthesiology Conference, St. John's Hospital, 3:00 P.M.
 Lecture in Internal Medicine, Hillcrest Medical Center, 5:30 P.M. Subject: "Medical Management of Urinary Tract Infection." Speaker, Dr. Allen B. Eddington.
 Byrne Memorial Hospital Staff Meeting, 7:30 P.M. Subject: "Retrolental Fibroplasia."
 Speaker, Dr. G. R. Russell.

MAY MEDICAL CALENDAR

WEDNESDAY, May 15th:

Copy deadline for the June issue of The Bulletin.
 St. John's Isotope Clinic, St. John's Hospital, 8:30 A.M.
 Postgraduate Short Course, University of Oklahoma School of Medicine, Oklahoma City,
 3:30 P.M. Subject: "Chronic Pulmonary Disease."
 Medical Assistants Society of Tulsa Meeting, Danner's Cafeteria, 7:00 P.M.

THURSDAY, May 16th:

Obstetrics & Gynecology Section Meeting, St. John's Hospital, 8:30 A.M.
 Medical Section Meeting, St. John's Hospital, 8:30 A.M.

FRIDAY, May 17th:

St. John's Isotope Committee Meeting, St. John's Hospital, 8:30 A.M.
 St. John's Tumor Clinic, Clinical Conference, 9:30 A.M.
 X-Ray Conference, Hillcrest Medical Center, 3:30 P.M.
 Journal Club, Hillcrest Medical Center, 6:00 P.M. Subject: "Management of Pancreatic
 Diseases." Speakers, Drs. Robert G. Tompkins, Byron W. Steele, Jr., and William R.
 Turnbow.

SATURDAY, May 18th:

Pathological Tissue Conference, Hillcrest Medical Center, 8:30 A.M.

SUNDAY, May 19th:

Medical Telecast, "Medical Horizons" series, Television Station KTVX, 3:30 P.M.

MONDAY, May 20th:

Staff Meeting, St. John's Hospital, 8:00 P.M.

TUESDAY, May 21st:

St. John's Tumor Clinic, 8:00 A.M.
 Interns and Residents Lecture, St. John's Hospital, 12:30 P.M. Subject: "Records and
 Coding of Hospital Charts." Speaker, Mrs. Helen Wilson.
 Surgical Section Meeting, Hillcrest Medical Center, 7:30 P.M.
 Board of Directors Meeting, Tulsa County Public Health Association, 7:30 P.M. Place
 to be announced.
 X-Ray Conference, St. John's Hospital, 8:00 P.M.

WEDNESDAY, May 22nd:

St. John's Isotope Clinic, St. John's Hospital, 8:30 A.M.
 Medical Section Meeting, Hillcrest Medical Center. Dinner, 6:00 P.M. Meeting, 7:00
 P.M.

THURSDAY, May 23rd:

Medical Section Meeting, St. John's Hospital, 8:30 A.M.
 Surgical Motion Picture, Hillcrest Medical Center, 12:30 P.M. Subject: "Surgical Ana-
 tomy of the Thyroid Gland."

FRIDAY, May 24th:

St. John's Isotope Committee Meeting, St. John's Hospital, 8:30 A.M.
 St. John's Tumor Clinic, Clinical Conference, 9:30 A.M.
 X-Ray Conference, Hillcrest Medical Center, 9:30 P.M.

SATURDAY, May 25th:

Pathological Tissue Conference, Hillcrest Medical Center, 8:30 A.M.

SUNDAY, May 26th:

Medical Telecast, "Medical Horizons" series, Television Station KTVX, 3:30 P.M.

MONDAY, May 27th:

Tulsa Academy of General Practice Meeting, Hotel Tulsa, 6:30 P.M. Subject: "Common
 Diseases of the Skin." Speaker, Dr. Everett C. Fox, Professor of Dermatology, South-
 western Medical College, Dallas, Texas.

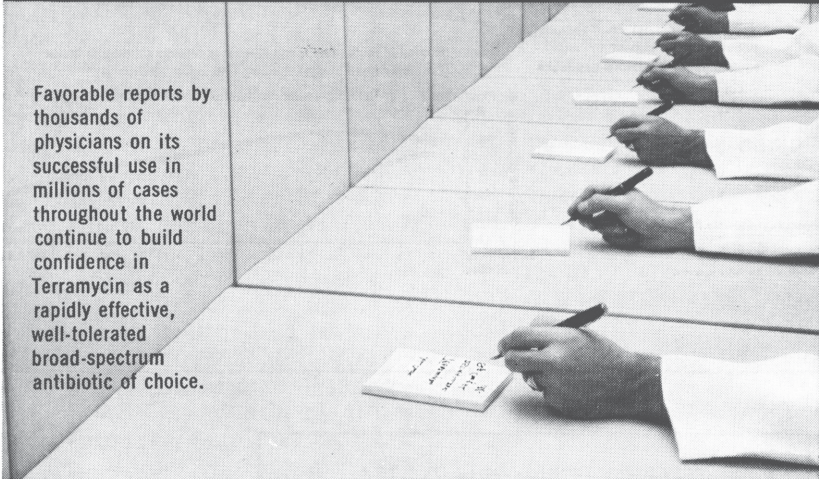
TUESDAY, May 28th:

St. John's Tumor Clinic, 8:00 A.M.
 Pediatrics Section Meeting, St. John's Hospital, 9:00 A.M.
 Interns and Residents Lecture, St. John's Hospital, 12:30 P.M. Subject: "Hospital
 Stewardship-Physician's Responsibilities." Speaker, Mr. Ken Wallace.
 Pharmaceutical Demonstration, Hillcrest Medical Center, 12:30 P.M.
 Lecture in Internal Medicine, Hillcrest Medical Center, 5:30 P.M. Subject: "Manage-
 ment of the Anxiety State." Speaker, Dr. Arnold H. Ungerman.
 Obstetrics & Gynecology Section Meeting, Hillcrest Medical Center, 7:30 P.M.

a cornerstone in
broad-spectrum
therapy... **TERRAMYCIN[®]**

BRAND OF OXYTETRACYCLINE

Favorable reports by thousands of physicians on its successful use in millions of cases throughout the world continue to build confidence in Terramycin as a rapidly effective, well-tolerated broad-spectrum antibiotic of choice.



A convenient dosage form for every need in broad-spectrum therapy
... including peach-flavored

TERRABON

BRAND OF CALCIUM
DI-OXYTETRACYCLINE

**HOMOGENIZED
MIXTURE**

[®] Ready-to-use liquid oral preparation; provides therapeutic blood levels in one hour.

and peach-flavored

TERRABON

HOMOGENIZED MIXTURE

pediatric drops

[®] Ready-to-use liquid oral preparation for infants and younger children. Just 2 drops per pound per day. Supplied with calibrated plastic dropper.



World leader in antibiotic development and production

Pfizer Laboratories, Division, Chas. Pfizer & Co., Inc., Brooklyn 6, N. Y.

new... a more potent, longer-acting progestational agent

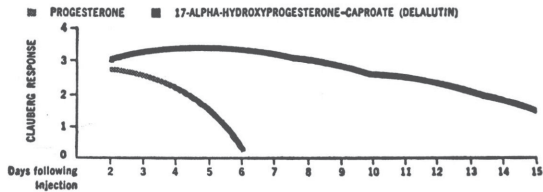
DELALUTIN

SQUIBB 17-ALPHA-HYDROXYPROGESTERONE-CAPROATE

a single injection provides sustained progestational activity for approximately 2 weeks, when enough estrogen is present, simulating endogenous progesterone production.

Vials of 2 and 10 cc. Each cc. provides 125 mg. of 17-alpha-hydroxyprogesterone-caproate

Comparative effect of single subcutaneous injection of Delalutin and progesterone on the progestational changes (Clauberg Test) in the rabbit uterus



SQUIBB



Squibb Quality—the Priceless Ingredient

*DELALUTIN® IS A SQUIBB TRADEMARK.

TELEPHONE Riverside 7-1384

your guarantee of

Prescription Excellence

at modern prices

2110 South Utica

D. L. KINCAID
(Kinney)

RAYMOND EWERS

PROFESSIONAL DRUG SHOP

MEDICAL ASSISTANTS GROUP TO MEET IN TULSA, MAY 3-5

The Oklahoma State Medical Assistants Society has announced the date of its Ninth Annual Meeting for May 3-5, 1957, at Hotel Tulsa. Approximately 300 assistants to Oklahoma doctors are expected to attend.

Among the guest speakers for the convention will be:

Dr. David B. Allman, President-Elect, American Medical Association, Atlantic City, New Jersey.

Dr. Maurice Tinterow, anesthesiologist Wichita, Kansas.

Miss Nancy Kline, Department of Public Relations, Smith, Kline & French Laboratories, Philadelphia, Pennsylvania.

A panel discussion on the problems of the new Medicare program will be scheduled for 12:30 P.M. on Saturday, May 4, with Dr. H. H. Macumber of Chickasha, and Mr. Carl E. Behle and Mr. Windham Hill of the Blue Shield Plans of Oklahoma as guest participants.

A panel discussion on "Medicine of Tomorrow," a review of new advances in medical science, will be held on Sunday, May 5th, at 10:30 P.M. Participants will include Dr. Maurice Tinterow of Wichita, and Drs. William M. Benzing, Jr., Dixon N. Burns, Edward L. Moore, and Milford S. Ungerman of Tulsa.

All medical doctors are invited to attend any of the sessions of the group.

MOBILE X-RAY UNIT

The Mobile X-Ray Unit of the Tulsa County Public Health Association will observe the following schedule in May:

May 1-4, Skiatook; May 6-11, 13-18, Collinsville; May 20-25, Owasso; May 27-29, Alsuma; May 31, Broken Arrow.

DR. FRANK A. STUART was guest speaker for the Tulsa County Bar Association on April 17th. He showed a motion picture entitled "Flexion Exercises and Management of Low Back Mechanical Disorders."

DR. DAVE B. LHEVINE has returned from St. Louis, Missouri, where he inspected x-ray equipment to be purchased for Hillcrest Medical Center.

Guest speakers for the Edison High School Medical Club during April included DR. WILLIAM J. OSHER, DR. MARSHALL O. HART, DR. WILLIAM T. HOLLAND, DR. RAYMOND M. MICHOLS, and DR. LESTER I. NIENHUIS.

DR. MARCELLA R. STEEL has been added to the personnel of the Polio Vaccine Committee of the Tulsa County Medical Society.

DR. JOHN E. McDONALD attended a meeting of the Legislative Committee of the American Medical Association in Washington, D. C., March 28-31.

DR. WILLIAM T. HOLLAND was a guest panelist in a community meeting on the subject, "Problems of Alcoholism," held April 18th at Broken Arrow, Oklahoma, under the sponsorship of the Parent-Teachers Association.

Guest speakers for the Central High School Pre-Med Club during April included DR. PAUL A. BISCHOFF, DR. WILLIAM M. BENZING, JR., DR. R. M. WADSWORTH, DR. MAXWELL A. JOHNSON, and DR. MARTIN LEIBOVITZ.

INSURANCE

Professional Liability



Complete Estate Planning Service

R. S. Henderson H. B. Long
F. S. Schneider Don J. Grant
Jack W. Nelson

ALEXANDER & ALEXANDER
INCORPORATED

Enterprise Building Telephone
Utica Square Bank Building LU 4-1301

**EVERY WOMAN
WHO SUFFERS
IN THE
MENOPAUSE
DESERVES
"PREMARIN"**

*widely used
natural, oral
estrogen*

AYERST LABORATORIES
New York, N. Y. • Montreal, Canada

5645

**GENERAL PRACTICE GROUP
TO HEAR DERMATOLOGIST**

Dr. Everett C. Fox, Clinical Professor of Dermatology at Southwestern Medical College, Dallas, Texas, will be guest speaker for the Tulsa Academy of General Practice on Monday, May 27, 1957, at Hotel Tulsa.



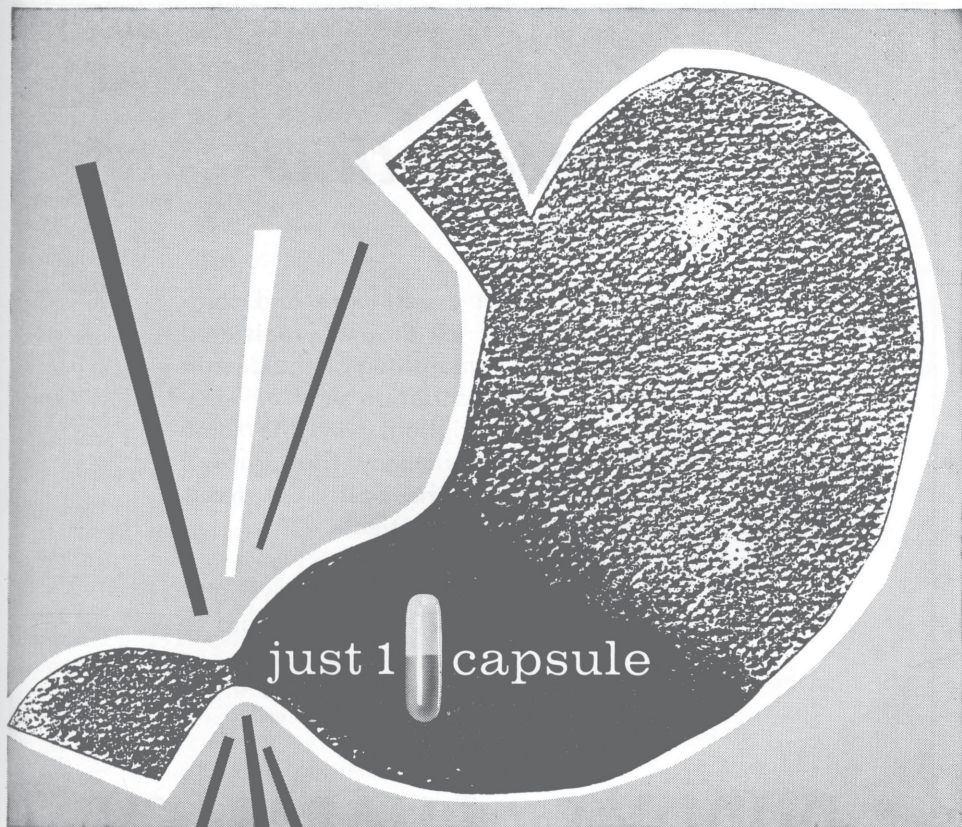
Dr. Fox

The meeting will be a dinner beginning at 6:30 P. M. Reservations may be made by calling LU 4-7925 or LU 2-5904. The scientific program will begin at 8:00 P.M. All medical doctors are invited to attend.

A native of Texas, Dr. Fox is a graduate of the Baylor University School of Medicine, Class of 1928. He interned at Grasslands Hospital of Valhalla, New York. Subsequently he completed post-graduate training in dermatology at Columbia University College of Physicians and Surgeons, New York, N. Y., and at Parkland and Baylor University hospitals of Dallas, Texas. Since 1932 he has been in practice at Dallas, specializing in Dermatology. Dr. Fox is a diplomate of the American Board of Dermatology and Syphilology, former President of the Society of Clinical Surgery, former member of the Board of Trustees of the American Academy of Dermatology and Syphilology, and member of the American Dermatology Association and the Society for Investigative Dermatology. He is a fellow of the American College of Physicians. During World War II, Dr. Fox served with the United States Navy and was discharged with the rank of Captain.

FOR RENT: Air-conditioned, 3-suite office, 360 square feet. Contact Dr. Robert A. Northrup, 1307 South Main, Tulsa.

DR. ERNEST S. KEREKES was a guest speaker for the Okmulgee County Medical Society on April 8th.



just 1 capsule

relieves upper G. I. pain \rightarrow spasm

usually in 10 minutes

visceral eutonic

DACTIL[®]

PLAIN AND WITH PHENOBARBITAL

- normalizes visceral tone and motility
- does not interfere with digestive secretions
- avoids "antispasmodic" side effects
- prescribed q.i.d. for gastroduodenal and biliary spasm, cardiospasm, pylorospasm, biliary dyskinesia, gastric neurosis and irritability

DACTIL is the only brand of N-ethyl-3-piperidyl diphenylacetate hydrochloride.

L LAKESIDE

Prescriptions

Demand the finest in expert care and compounding. Our staff of trained registered pharmacists are your guarantee of the best in ethical and reliable prescription service. They will handle your prescriptions with the same degree of care and efficiency that Purdy's has been noted for in the past. Courteous counter service for your patients.

You are invited to visit our attractive new Number Two Store at 2570 South Harvard.

PURDY'S PHARMACY

3102 S. HARVARD

Telephone

RI 7-4550

RI 3-1341

2570 S. HARVARD

Telephone

RI 2-7349

"Prescriptions Triple Checked"

FREE CITY-WIDE DELIVERY FROM BOTH STORES

Charge Accounts Invited

**DR. C. E. CALHOUN HONORED
IN COMMUNITY CELEBRATION**

It was "Dr. Charles Edward Calhoun Day" on March 25, 1957, as Sand Springs paused to pay tribute to a beloved general practitioner with more than 47 years of service to the community.

Dozens of friends, former patients, and business leaders gathered at a special meeting of the Sand Springs Chamber of Commerce to present Dr. Calhoun with a handsome plaque and certificate of Life Membership in the Chamber. The highlights of the doctor's colorful and kindly career were reviewed by Mr. Luther Roberts, who noted Dr. Calhoun had delivered more than 3,000 babies during his active practice.

A native of Alabama, Dr. Calhoun is a graduate of Maryland Medical College of Baltimore, Class of 1903. He practiced at Shawnee, Oklahoma, for several years and in 1910 moved to Sand Springs. During World War I he served with the Army Medical Corps and was overseas for a period of eighteen months. For many years Dr. Calhoun was the official physician for the Sand Springs Home and



Dr. Calhoun at his desk.

R_x

TRI-CALSATE
The Buffered Gastric Antacid



**For Effective
Peptic Ulcer and
Gastric Hyperacidity
Control**

Tri-Calsate has been widely prescribed for more than a quarter of a century in the medical management of peptic ulcer and the gastric hyperacidity syndrome. It has proven effective and safe for continuing treatment.

May be prescribed in water or mixed with milk to combine medication with nutriment. No dangerous side effects have ever been reported from maximum Sippy dosage.

Available on Rx in 4½ oz. & 18 oz. bottles

Producers also of Granular Effervescent Caknam, the urinary alkalizer and Tri-Calgescic, the buffered analgesic.

F. H. PAXTON & SONS, INC.

Pharmaceuticals

1608 NORTH PARK AVE.

CHICAGO 14, ILL.

MULTIPURPOSE ANTIHISTAMINE

well-tolerated

'PERAZIL'

brand Chlorcyclizine Hydrochloride

TABLETS

two strengths

25 mg., sugar-coated

50 mg., scored, uncoated

all-round allergy relief

patients appreciate the gratifying relief from allergic reactions of virtually every type.

all around the clock

up to 24 hours of activity with a single dose (adults 50 to 100 mg.; children 25 mg.)

*exceptionally low
incidence
of side effects*



BURROUGHS WELLCOME & CO. (U.S.A.) INC.
Tuckahoe, New York

Hospital.

Although he closed his office four years ago, old patients wouldn't let Dr. Calhoun retire and he still sees a few patients in a small shop behind his home. He is a Life Member of the Tulsa County Medical Society.

BLOOD CENTER NEWS

DISTRIBUTION & REPLACEMENT REPORT

March, 1957

Hospital:	Bloods Used:	Replac- ments:	% Repl.
St. John's	533	200	37.5%
Hillcrest	368	165	44.8%
Byrne	11	3	27.3%
Osteopathic	95	51	53.7%
Mercy	7	4	57.1%
Tulsa Osteo.	12	3	25.0%
Broken Arrow	26	24	92.3%
Moton	17	10	58.8%
Other Hospitals....	79	128	162.0%
Other Uses.....	107
Totals.....	1,255	588	46.9%

The Tulsa County Red Cross Blood Center is now considering an extension of its present hours to make the Center more accessible to donors. Dr. Felix R. Park, Chairman of the Red Cross Blood Center Committee, said a study was now being conducted to determine the feasibility of keeping the Center open during the noon hours, on weekends, and an increased number of evenings. The changes would permit more employees to contribute blood without loss of working time and would also encourage more replacement donors from out of town. The extension of the hours will depend upon availability of medical, nursing and clerical personnel.

Replacement figures for the first quarter of 1957 shows a replacement of 59.0% of the blood given to patients in Hillcrest Medical Center, 47.6% for St. John's Hospital patients, and 76.7% for Oklahoma Osteopathic. Total blood received during the quarter amounted to 4,062 units, an increase 525 over the same period for 1956.

DR. ROBERT E. NATHAN has returned from a vacation in Puerto Rico.

Upjohn

Penicillin plus triple sulfonamides

Biosulfa* Tablets

(125M, 250M, 500M)

Each tablet contains:

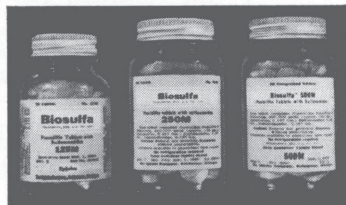
Penicillin G Potassium, crystalline	125,000 units or 250,000 units or 500,000 units
Sulfadiazine	0.167 Gm.
Sulfamerazine	0.167 Gm.
Sulfamethazine	0.167 Gm.

Adult dosage: 125M — 2 tablets every four to six hours; 250M and 500M — 1 to 2 tablets every six hours.

Available in bottles of 50 tablets. The 125M strength also available in bottles of 500.

*TRADEMARK, REG. U. S. PAT. OFF.

The Upjohn Company, Kalamazoo, Michigan



North and West

13TH AND MAIN

Telephone GI 7-3103

SCOTT ROBISON'S

Service

**PRESCRIPTION
STORES**

15TH AND LEWIS

Telephone WE 9-6393

South and East

HARVARD DRUG STORE

B. C. SHINN, Owner

Phone MAdison 6-2186

*The
Suburban
Prescription
Store*

**FREE
PRESCRIPTION
DELIVERY**

**3244 E. 11th St.
Tulsa**



IN PRACTICE 50 YEARS

Dr. Joseph E. Brookshire (right), pioneer Tulsa physician, is pictured as he receives a gold pin from the Oklahoma State Medical Association in commemoration of the completion of fifty years in the practice of medicine. Making the presentation is Dr. Wendell L. Smith, Councilor. Dr. Brookshire, a graduate of the University Medical College of Kansas City, entered practice in 1907 at Welch, Oklahoma. He practiced later at Nowata and since 1923 has been a general practitioner in Tulsa. Dr. Brookshire still goes daily to his office in the Ritz Building. He is a Life Member of the Tulsa County Medical Society. The presentation of the pin was made at the Society meeting of April 8th.

DR. RAYBURNE W. GOEN was invested with fellowship in the American College of Physicians at the annual meeting of the organization in Boston, Massachusetts, April 8-10, 1957.

In attendance at the annual meeting of the American Academy of Pediatrics in Washington, D. C., April 1-4, were DR. MARY V. GRAHAM, DR. DAVID J. UNDERWOOD, and DR. LEONARD L. KISHNER.

DR. E. N. LUBIN was guest speaker for the Creek County Medical Society on March 26th.

DR. PAUL C. BENTON has resigned as Administrator of Children's Medical Center to devote full time to his duties as Medical Director of the Child Guidance Clinic.

RELIEVES ANXIETY
AND TENSION

RELIEVES
DISCOMFORT
AND DISABILITY



RELIEVES JOINT INFLAMMATION

RELIEVES MUSCLE SPASM

NO OTHER
ANTIRHEUMATIC,
ANTIARTHRITIC
PROVIDES AS MANY
BENEFITS AS

MULTIPLE COMPRESSED TABLETS

'MEPROLONE'

MEPRO PREDNISO	BAMATE LONE, buffered
-------------------	--------------------------

THE ONLY
ANTIRHEUMATIC,
ANTIARTHRITIC
THAT SIMULTANEOUSLY
RELIEVES:
1. MUSCLE SPASM
2. JOINT INFLAMMATION
3. ANXIETY AND TENSION
4. DISCOMFORT
AND DISABILITY

Each Multiple Compressed Tablet of 'MEPROLONE' provides the antiarthritic, antirheumatic benefits of:

1. *Prednisolone buffered*—the newest and most potent of the "predni-steroids" for prompt relief of joint pain and arrest of the destructive inflammatory process.
2. *Meprobamate*—the newest and safest of the muscle-relaxant tranquilizers—relaxes accessory musculature in spasm—eases mental tension and anxiety, so often manifest in patients with rheumatic, arthritic disorders.

Indications: Rheumatoid arthritis, rheumatoid spondylitis, Still's disease, psoriatic arthritis, tenosynovitis, myositis, fibrositis, intractable asthma, respiratory allergies, allergic and inflammatory eye and skin disorders.

Dosage: 1 or 2 tablets 3 or 4 times daily.

Supplied: Multiple Compressed Tablets in bottles of 100 in two formulas as follows: 'MEPROLONE'-1—1.0 mg. of prednisolone, 200 mg. meprobamate and 200 mg. dried aluminum hydroxide gel. 'MEPROLONE'-2—provides 2.0 mg. of prednisolone in the same formula.

'MEPROLONE' is a trade-mark of Merck & Co., Inc.



MERCK SHARP & DOHME
DIVISION OF MERCK & CO., INC. PHILADELPHIA 1, PA.

RICH AND CARTMILL

**PROFESSIONAL
LIABILITY**

*Diagnosing
Insurance Needs
for
Thirty-Five Years*

H. Robert Wood	John R. Cartmill
Edward L. Bentley	I. D. Rich
Tom Beck	

**Citizens Bank Building
Telephone GI 7-4173**

There Is Only ONE BALL DRUG

**STORE
Serving
EAST TULSA
With Prompt Service
Since 1920
Telephone MA 6-2156
College At Admiral**

DICK KELLO
Owner

Tulsa physicians in attendance at the closed circuit telecast and dinner sponsored by Pfizer Laboratories and J. B. Roerig Company at Oklahoma City, April 10th, included DR. G. R. RUSSELL, DR. ROBERT K. ENDRES, DR. WALTER B. SANGER, DR. PAUL C. BENTON, DR. MARSHALL O. HART, DR. EARL M. LUSK, DR. JAMES C. PETERS, DR. CRAIG S. JONES, DR. PAUL K. HEERWAGEN, JR., DR. R. G. SHERWOOD, DR. WALTER E. BROWN, DR. SIMON POLLACK, DR. WENDELL L. SMITH, DR. WILLIAM J. OSHER, DR. PAUL E. CRAIG, and DR. WILLIAM B. SCIMECA.

DR. AVERILL STOWELL was guest speaker for the Tulsa Chapter of the National Multiple Sclerosis Society on March 14th.

DR. KONSTANTIN H. GEOCARIS and DR. HORACE R. W. VIAL were elected to membership in the Tulsa County Medical Society at the regular meeting of April 8th.

Participants in the program of the Sixth Annual Mental Health Institute held April 9th at the University of Tulsa included DR. MANUEL BROWN, DR. ROBERT G. TOMPKINS, and DR. JED E. GOLDBERG.

DR. HAROLD W. FRIEZE has joined the staff of Glass-Nelson Clinic of Tulsa.

Tulsa physicians appearing on the program of the annual meeting of the Oklahoma Tuberculosis Association in Tulsa, April 15-16, included DR. ROBERT M. SHEPARD, JR., and DR. T. PAUL HANEY.

DR. E. N. LUBIN has been named as Co-Chairman of the Education and Public Relations Committee of the Tulsa County Heart Association and will share the duties with DR. RUSSELL C. PIGFORD.

Guest speakers for the Will Rogers High School Medical Club during April were DR. JAMES W. KELLEY, DR. PAUL T. STRONG, and DR. ROBERT W. SPENCER.

DR. DONALD V. CRANE has been vacationing in New York, N. Y.

DR. JAMES W. KELLEY and DR. EDWARD L. MOORE appeared on the program of the Southwestern Surgical Congress at Wichita, Kansas, April 15-18.

the next patient you see



*that patient may need nutritional support
that patient may need a corrected diet and*

Theragran

Squibb Therapeutic Formula Vitamins
capsules • liquid

clinically proved, truly therapeutic dosages of the six vitamins almost invariably associated with chronic vitamin deficiency states

Each Theragran Capsule, or each 5 cc. teaspoonful of Theragran Liquid, supplies:

Vitamin A	25,000 U.S.P. units
Vitamin D	1,000 U.S.P. units
Thiamine	10 mg.
Riboflavin	10 mg.
Niacinamide	150 mg.
Ascorbic acid	150 mg.

Supply: Theragran Capsules, bottles of 30, 60, 100 and 1000. Theragran Liquid, bottles of 4 fl. oz.

SQUIBB



Squibb Quality—the Priceless Ingredient

*THERAGRAN® IS A SQUIBB TRADEMARK.

Building For Tulsa's Future —

your guarantee
of the finest in
hospital care

ST. JOHN'S HOSPITAL

1923 SOUTH UTICA
Phone RI 2-3361

UTICA SQUARE PHARMACY

Dial

Riverside 2-2434

Prompt

FREE DELIVERY

CHARGE ACCOUNTS
INVITED

ANNUAL MEETING

(Continued From Page 8)

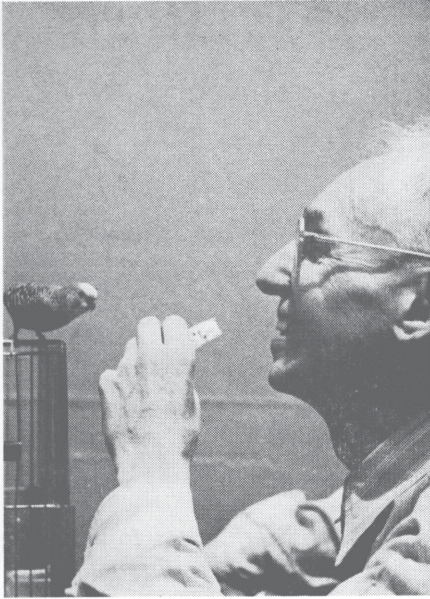
held Wednesday afternoon, May 8, at Tulsa Country Club. Dr. Robert Hall Johnson, Chairman, said reservations could be made in advance with any professional service representative of Pfizer Laboratories or at the General Registration Desk in the Lobby of The Mayo. Golfing begins at 12:00 Noon. The social hour will be at 6:00 P.M. in the Clubhouse followed by dinner at 7:00 P.M. The entire event is complimentary with convention registrants the guests of Pfizer Laboratories for golfing, social hour and dinner.

The commercial exhibit at the 1957 annual meeting will be in two sections—one on the 16th floor of The Mayo immediately adjacent to the Crystal Ballroom, and a second in the Main Lobby of The Mayo. The lobby exhibit will be partitioned off for privacy and only convention registrants will be admitted.

For the first time in several years the annual meeting is featuring two separate scientific sections running concurrently. One morning section will be devoted to medical motion pictures. Among the fourteen films to be shown will be "Surgical Correction of Atresia Ani Vaginalis" by Dr. John G. Matt, Tulsa proctologist. The two sections are designed to offer convention visitors a wider selection of scientific material.

Individual physicians and organizations who have prepared scientific exhibits for display at the annual meeting include the Oklahoma Division of the American Cancer Society, the Tulsa County Red Cross Blood Center, the American Medical Association, the Oklahoma Cerebral Palsy Institute, the University of Oklahoma School of Medicine, the Oklahoma Society of Anesthesiologists, the United States Veterans Administration Hospital of Oklahoma City, Dr. Averill Stowell of Tulsa, and Drs. Joseph W. Kelso, Joseph Funnell, Gilbert L. Hyroop, Thomas O. Hodges, S. M. Glasser, William N. Harsha, and J. Newton Owens of Oklahoma City.

A heavy demand for hotel accommodations indicates a near record attendance.



brighten
the day

for the geriatric patient

Ritalin[®]
hydrochloride
(methylphenidate hydrochloride CIBA)

... mild antidepressant, unre-
lated to amphetamine, bright-
ens outlook and renews vigor
— with little or no effect on
appetite or blood pressure.

AVERAGE DOSAGE: 10 mg. b.i.d. or t.i.d.
SUPPLIED: *Tablets*, 5 mg. (yellow), 10 mg.
(light blue), 20 mg. (peach-colored).

C I B A SUMMIT, N. J. 2/2438B

Did You Know That . . .

MILK DOES MORE
FOR THE REDUCER
THAN ANY OTHER SINGLE FOOD?

DAIRY COUNCIL OF TULSA

Affiliated With National Dairy Council

Telephone GI 7-8280

312 Wright Building



Reach for the Telephone, Doctor

Just call RI 7-7519 and your prescriptions will be compounded exactly as you wish. Free delivery, too! Give us a ring!

**BROOKSIDE
DRUG STORE**

3348 South Peoria

SPARTAN DRUG

**6343 East Tecumseh
Telephone TEmple 5-4076**

*Serving Spartan-
Douglas-American
Area*

**PRESCRIPTIONS SENT TO US
WILL BE PROMPTLY FILLED**

**Two Pharmacists to Serve You
STEVE LAWRENCE
JOHN ADAMS**

*Serving Tulsa Doctors
With the Finest in Quality Printing*

You will be delighted with our attractive and useful stationery, statement forms, case history records, prescription pads, appointment cards, and receipt books, all tailored to your specific office needs. Let us add your name to our growing list of satisfied doctors and dentists.

*for personalized service and attention
to your printing needs call CHerry 2-2450*

Commercial

**PRINTING COMPANY
310 South Lansing**



The Emblem Of Approval

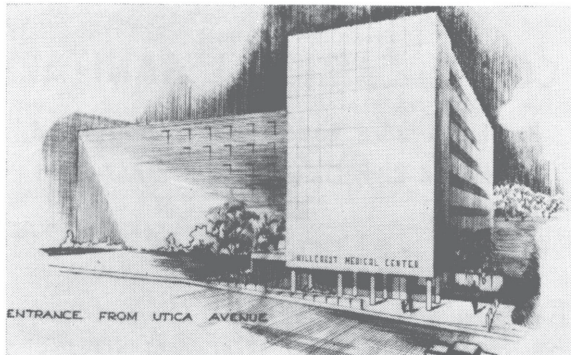
Owned and operated by the Tulsa County Medical Society, the Medical Credit Bureau offers an efficient reliable collection service at cost. More than 135 Tulsa doctors and dentists attest to its discreet collection abilities.

MEDICAL CREDIT BUREAU

Official Collection Agency of The Tulsa County Medical Society

B-9 Medical Arts Building

Telephone DI 3-6331



Architect's Drawing Of Our New 210-Bed Addition

Keeping Pace With Oklahoma Hospital Progress

HILLCREST MEDICAL CENTER

A Finer Institution in Oklahoma Medicine

1653 EAST 12TH STREET

TULSA, OKLAHOMA

**ETHICAL
PRESCRIPTION
SERVICE**

Registered Graduate
Pharmacists Only

PROMPT DELIVERY
Riverside 2-3387

**VERLE SMITH'S
PRESCRIPTION SHOP**

IN BROOKSIDE
3409 SOUTH PEORIA

Week Days 8 A.M. to 10:00 P.M.
Sundays and Holidays
9:00 A.M. - 12:00 Noon
6:00 P.M. - 9:00 P.M.

**BYRNE
MEMORIAL HOSPITAL**

1321 South Peoria
Telephone CH 2-4114

●
FORTY-ONE BEDS
COMPLETELY AIR CONDITIONED
MODERN OPERATING ROOM
REGISTERED NURSES
ATTRACTIVE NURSERY

●
Bessie L. Byrne, Owner

The COYNE CAMPBELL SANITARIUM*

Northeast 23rd Street and Spencer Road
Oklahoma City, Okla. Ph. GA 7-2441

STAFF

A. A. HELLAMS, M.D. MOORMAN P. PROSSER, M.D.
CHARLES E. LEONARD, M.D. HAROLD G. SLEEPER, M.D.
CHARLES F. OBERMAN, M.D. CHARLES A. SMITH, M.D.

*And open to other psychiatrists certified by
the American Board of Psychiatry and Neurology.*

*OWNED AND OPERATED
BY THE OKLAHOMA
MEDICAL RESEARCH FOUNDATION

JACK BARTHOLD,
BUSINESS MANAGER

TULSA MEDICAL SERVICE ASSOCIATION

Membership Roster, Tulsa Chapter

<i>Name:</i>	<i>Representing:</i>	<i>Telephone:</i>
Ed L. Allred	Maltbie Laboratories	GI 7-7991
Bob Amos	Wyeth	RI 3-1938
Jim Baughman	Schenley Laboratories	WE 9-9165
G. Richard Brown	Mead Johnson & Company	TE 5-6839
J. P. Crawford	Armour Laboratories	MA 6-3481
Joe F. Chappell	Pitman-Moore Co.	MA 6-5363
George M. Clulow	Sandoz Pharmaceuticals	GI 7-5684
C. R. Doran	Lakeside Laboratories	Claremore 1083
James L. Edwards	Warner-Chilcott Co.	WE 9-8962
Wayne Garrison	Ciba	TE 5-0070
R. C. Gooch	Abbott Laboratories	WE 9-4389
Fred Harris	Wyeth	RI 2-5835
Lou Hayes	Massengill Company	HI 6-0957
Paul Heaston	Merck, Sharp & Dohme	RI 2-8447
Gene Jones	U. S. Vitamin Corp.	TE 5-0900
R. C. Keller	McNeil Laboratories	RI 2-7640
C. M. (Mike) Kelly	National Drug Co.	WE 9-9311
Donald E. Laird	Ciba	TE-5-1152
Dorwin Lamkin	Upjohn	RI 7-1668
R. E. Loftus	Warren-Teed	RI 7-1717
A. L. Mallory	Warren-Teed	TE 5-3638
Mark Mathes	Cutter Laboratories	TE 5-2963
R. T. (Bob) Mauch	Burroughs-Wellcome	RI 7-4347
Bob Meanor	E. R. Squibb Co.	WE 9-9313
Ralph L. Miller	Hoffman-LaRoche	RI 7-1878
E. Dick Millwee	E. R. Squibb Co.	RI 2-5668
Glen E. Mitchell	Smith, Kline & French	TE 5-2007
Dan E. Payne	William S. Merrell	TE 5-0583
Dave Prater	Winthrop Laboratories	TE 5-2735
A. M. Sayles	E. R. Squibb & Co.	RI 2-1646
Tom Sellers	G. D. Searle	WE 9-7361
Kenneth Shaw	George A. Breon Co.	CH 2-1566
E. E. Sisney	Eaton Laboratories	RI 2-5347
Bill Terral	Merck, Sharp & Dohme	TE 5-7008
Cecil Tredway	Wyeth Laboratories	WE 9-0075
Bill Walker	Parke-Davis	WE 9-8015
Preston Walker	Upjohn	RI 7-6464
Jack Wood	Winthrop Laboratories	RI 2-8218

Professional Directory

<p>S. Y. ANDELMAN, M.D. Diagnosis & Treatment of Arthritis & Rheumatic Diseases 320 Utica Square Medical Center Ph. RI 7-0173</p>	<p>DONALD L. BRAWNER, M.D. General Surgery 406 Medical Arts Bldg., Ph. LU 7-2022</p>
<p>WILLIAM M. BENZING, JR., M.D. Diplomate American Board of Radiology 302 Medical Arts Bldg. Ph. DI 3-3044</p>	<p>MANUEL BROWN, M. D. Allergic Diseases 1619 E. 15th St. Ph. LU 4-5552</p>
<p>BERGET H. BLOCKSOM, M. D. MAXWELL A. JOHNSON, M. D. Urologists Diplomates, American Board of Urology 517 Medical Arts Bldg., Ph. LU 4-1888</p>	<p>EMIL M. CHILDERS, M.D. General Surgery 302 Utica Square Medical Center Ph. RI 2-8854</p>

Professional Directory

<p>SAFETY R. FIRST, M.D., F.A.C.C. Cardiology & Electrocardiology 1011 Medical Arts Bldg. Ph. LU 4-7545</p>	<p>DORWIN E. HAWTHORNE, D.D.S. Oral Surgery 304 Utica Square Medical Center Ph. RI 2-5579</p>
<p>SAMUEL E. FRANKLIN, M. D. General Surgery 1619 E. 15th St. Ph. LU 3-2108</p>	<p>JAMES W. KELLEY, M.D., F.A.C.S. Plastic and Reconstructive Surgery Diplomate, American Board Of Plastic Surgery 204 Utica Square Medical Center</p>
<p>JED E. GOLDBERG, M.D. Obstetrics and Gynecology Culdscopy 212 Utica Square Medical Center Ph. RI 2-8662</p>	<p>WALTER S. LARRABEE, M.D. LEON H. STUART, M.D. X-Ray Diagnosis & Therapy Radium Therapy 411 Medical Arts Bldg. Ph. GI 7-3111</p>
<p>JOHN F. GRAY, JR., M.D. Neuropsychiatry 208 Utica Square Medical Center Ph. RI 2-6016</p>	<p>MARTIN LEIBOVITZ, M.D. Thoracic and Cardiovascular Surgery Certified American Board of Surgery and Board of Thoracic Surgery 812 Medical Arts Bldg. Ph. DI 3-8722</p>
<p>WILLIAM T. HOLLAND, M.D. Neuropsychiatry 3102 South Harvard Suite 74 Ph. RI 2-8856</p>	<p>C. S. LEWIS, JR., M.D. Internal Medicine 501 Medical Arts Bldg. Ph. LU 4-2778</p>

SPRINGER CLINIC

Sixth and Cincinnati

Tulsa

Medicine

D. O. Smith, M.D.
 E. G. Hyatt, M.D.
 H. A. Ruprecht, M.D.
 Vincel Sundgren, M.D.
 Dean C. Walker, M.D.
 Thomas H. Fair, M.D.
 V. William Wood, M.D.

Neurology and Psychiatry

Tom R. Turner, M.D.
 Joe E. Tyler, M.D.

Clinical Psychology

William W. Saunders, Ph.D.

Pediatrics

G. R. Russell, M.D.
 Robert K. Endres, M.D.

Telephone LU 7-6621

General Surgery

Carl J. Hotz, M.D.
 William C. Pratt, M.D.

Obstetrics and Gynecology

Paul A. Bischoff, M.D.

Urology

K. F. Swanson, M.D.
 William F. Boyer, M.D.

Ear, Nose and Throat and Plastic Surgery

Donald L. Mishler, M.D.

Orthopedic Surgery

Charles E. Brighton, M.D.

Ophthalmology

Thomas L. Ozment, M.D.

Anesthesia

M. R. Steel, M.D.

Professional Directory

<p style="text-align: center;">VANCE LUCAS, M. D. Thoracic and General Surgery Diplomate, American Board of Surgery and Board of Thoracic Surgery Medical Arts Bldg. Ph. LU 3-5513</p>	<p style="text-align: center;">HOUSTON F. MOUNT, M.D. JAMES T. MADDOX, M. D. Obstetrics and Gynecology Ranch Acres Medical Center Ph. RI 2-0711</p>
<p style="text-align: center;">JAMES D. MARKLAND, M.D. Allergy 411 Medical Arts Bldg., Ph. GI 7-3111</p>	<p style="text-align: center;">JAMES H. NEAL, JR., M.D. Surgery Diplomate, American Board of Surgery 916 Medical Arts Building Telephone LU 4-0196</p>
<p style="text-align: center;">JOHN G. MATT, M.D. Diseases of the Rectum, Colon and Anus 1106 Medical Arts Building Ph. CH 2-1014</p>	<p style="text-align: center;">MARQUE O. NELSON, M. D. Dermatology X-Ray Epilation For Persistent Ringworm Of The Scalp 510 Medical Arts Bldg. Ph. GI 7-3532</p>
<p style="text-align: center;">RALPH A. MCGILL, M.D., F.A.C.S. Surgery-Radium 210 Utica Square Medical Center Ph. RI 2-2405</p>	<p style="text-align: center;">IRON H. NELSON, M.D. Clinical and Surgical Pathology 1107 Medical Arts Building 316 Utica Square Medical Center</p>
<p style="text-align: center;">EDWARD L. MOORE, M.D., F.A.C.S. BYRON W. STEELE, JR., M.D. Surgery Diplomates, American Board of Surgery 325 Utica Square Medical Center</p>	



TULSA CLINIC

915 South Cincinnati

Surgery
 Andre B. Carney, M.D.,
 F.I.C.S., F.A.C.S.

Medicine
 H. W. Ford, M.D.
 Thomas W. Taylor, M.D.
 Beryl D. Henwood, M.D.

Cardiology and
 Internal Medicine
 James C. Peters, M.D.

COMPLETE
 CLINIC
 FACILITIES

Telephone GI 7-0177

Miss Betty Adams
 Director

Neurology and
 Internal Medicine
 O. L. Hill, M.D.

X-Ray and
 Gastro-enterology
 Earl M. Lusk, M.D.

Internal Medicine
 Craig S. Jones, M.D.

Dentist
 J. Thurman Gamble, D.D.S.

Professional Directory

<p>FOR LISTINGS IN THIS PROFESSIONAL DIRECTORY CALL GI 7-8161</p>	<p>WADE SISLER, M.D. Orthopedic Surgery 8th and Elgin Ph. LU 4-4123</p>
<p>THE ORTHOPEDIC CLINIC Suite 203, Utica Square Medical Center Practice Limited To Bone & Joint Surgery JOHN E. McDONALD, M.D. FRANK A. STUART, M.D. JOHN C. DAGUE, M.D. RAYMOND M. MICHOLS, M.D.</p>	<p>WILLIAM ORLANDO SMITH, M.D. Master Medical Science, University of Pennsylvania; Fellow, Cleveland Clinic; Diplomate, American Board of Otolaryng- ology. Ophthalmology & Otolaryngology. 327 Utica Sq. Med. Ct. Ph. RI 2-2443</p>
<p>WILLIAM J. OSHER, M. D. Internal Medicine 608 Medical Arts Bldg., Ph. GI 7-9025</p>	<p>ROBERT W. SPENCER, M.D. Ophthalmology 312 Medical Arts Building Ph. LU 3-2019</p>
<p>SIMON POLLACK, M.D., D.A.B.R. C. H. ROSENBERG, M.D., D.A.B.R. Diagnostic and Therapeutic Radiology Suite 103, Utica Square Medical Center Ph. RI 2-4955</p>	<p>CHARLES G. STUARD, M.D. Ophthalmology 217 Utica Square Medical Center Ph. RI 7-0289</p>
<p>HERSCHEL J. RUBIN, M.D. Diplomate, American Board of Pediatrics Diseases of Infants & Children 1916 South Utica Tulsa</p>	<p>ARTHUR I. TAUBMAN, D.D.S., M.S.D. Oral Surgery & Exodontia 1111 Medical Arts Bldg. Tulsa, Okla. Office DI 3-6312 Emergency LU 4-7212</p>
<p>WM. B. SCIMECA, M.D., M.S. (In Surgery) General Surgery Ranch Acres Medical Center Ph. RI 2-7242</p>	<p>C. THOMAS THOMPSON, M.D. General Surgery Diplomate, American Board of Surgery Ranch Acres Medical Center Ph. RI 2-8838</p>
<p>J. D. SHIPP, M.D. Surgery and Diseases of the Colon and Rectum 708 Medical Arts Bldg. Tulsa</p>	<p>TURNBOW & RAY CLINIC Surgery — Diagnostic and Therapeutic Blocks 3015 E. 15th Street Ph. WE 9-6397</p>
<p>PAUL O. SHACKELFORD, M. D. Diplomate, American Board of Dermatology Diseases & Malignancies of the Skin X-Ray Radium Thorium-X 615 Medical Arts Bldg. Ph. CH 2-4872</p>	<p>ARNOLD H. UNGERMAN, M.D. MILFORD S. UNGERMAN, M.D. Diagnosis & Treatment of Nervous and Mental Diseases 404 Medical Arts Bldg., Ph. CH 2-3151</p>
<p>W. A. SHOWMAN, M.D. Diplomate, American Board Of Dermatology Diseases & Malignancies Of The Skin X-Ray—Grenz Ray—Radium—Thorium X 407 Medical Arts Bldg. Ph. DI 3-779</p>	<p>R. M. WADSWORTH, M.D. Pediatrics 1445 S. Quaker Ph. DI 3-4300</p>

WE RECOMMEND

Meadow Gold

HI-VITAMIN MILK

PERCENT OF U. S. MINIMUM DAILY ADULT REQUIREMENTS
SUPPLIED BY 1 QUART OF



REGULAR MILK		HI-VITAMIN MILK
40%	█	VITAMIN A 100%
35%	█	VITAMIN B ₁ 100%
97%	█	VITAMIN B ₂ 100%
6%	█	NIACIN 100%
49%	█	VITAMIN C 49%
5%	█	VITAMIN D 100%
100%	█	CALCIUM 100%
100%	█	PHOSPHORUS 100%
3%	█	IRON 100%
4%	█	IODINE 100%

VITAMINS AND MINERALS FORTIFIED BY GENERAL MILLS PROCESS

EACH QUART CONTAINS

VITAMIN A.....4000 U.S.P. UNITS	NIACIN.....10 MGM.
VITAMIN B ₁1 MGM.	VITAMIN D.....400 U.S.P. UNITS
VITAMIN B ₂2 MGM.	IRON.....10 MGM.
IODINE.....0.1 MGM.	

215 N. DENVER

Beatrice Foods Co.

PHONE LU 7-2471

Prescriptions Drugs and Biologicals

Our complete and modern stocks of the finest in drugs assures complete satisfaction to doctor and patient. Every prescription given individual attention by our registered pharmacists. Free delivery or courteous counter service.

RALEY-SHADDOCK PRESCRIPTION PHARMACY

1325 East 15th

Ph. Gibson 7-3133

Tulsa County Medical Society
B-9 Medical Arts Building
Tulsa 19, Oklahoma

BULK RATE

U. S. POSTAGE

PAID

TULSA 19, OKLA.

PERMIT No. 13

(Return Postage Guaranteed)

Be Certain with Curtain

CURTAINS PRESCRIPTION LABORATORY

Sixth and Boulder

Phone GI 7-7116

Across the Street North from Medical Arts Bldg.

MERKEL X-RAY COMPANY

MID-CONTINENT SURGICAL SUPPLY COMPANY

Exclusive Distributors

WESTINGHOUSE

and

PROFEX

X-Ray Equipment and Accessories

FILMS — CHEMICALS

PROMPT — SERVICE — EFFICIENT

Surgical Equipment

CARDIOGRAPHS — ULTRA SON — MICRO THERM

OKLAHOMA CITY
17 Broadway Circle
Central 2-3522

TULSA
1330 South Boston
CHerry 2-4897