

Celebrating Our
Golden Anniversary

1907 - 1957

Fifty Years of Medical Progress



The
BULLETIN

OF THE

Tulsa County Medical Society

February, 1957

Vol. 23

No. 2

when you want broad spectrum antibiotic therapy
with added safety for the many common respira-
tory, gastrointestinal and urinary tract infections...
the product to prescribe is

MYSTECLIN

Squibb Tetracycline - Nystatin

the ONLY broad spectrum antibiotic preparation
with added protection against monilial super-
infection

when you want specific antibiotic therapy for
infections caused by *Candida albicans* (monilia)...
the product to prescribe is

MYCOSTATIN

Squibb Nystatin

the ONLY effective and safe
antifungal antibiotic available

SQUIBB



Squibb Quality—the Priceless Ingredient

*MYCOSTATIN® AND *MYSTECLIN® ARE SQUIBB TRADEMARKS

in skin disorders

a major improvement in topical

corticosteroid therapy

new

Meti-Derm

cream 0.5%

with METICORTELONE, original brand of prednisolone

- approximately twice the per milligram potency of topical hydrocortisone
- no edema and sodium retention reported
- provides METICORTELONE in free alcohol form, reported by dermatologists to be the most effective form for topical steroid therapy

for effective local relief of allergic (atopic) dermatoses, poison ivy dermatitis and other contact dermatoses, nonspecific anogenital pruritus — with new corticosteroid potency.

formula: Each gram of water-washable METI-DERM Cream contains 5 mg. of prednisolone, free alcohol.

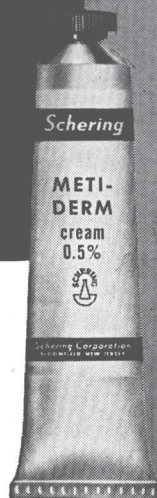
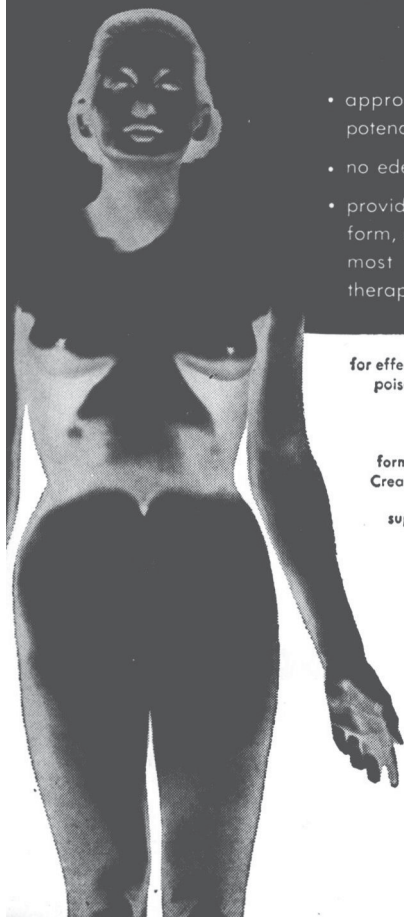
supplied: METI-DERM Cream, 0.5%, 10 Gm. tubes.

METICORTELONE,® brand of prednisolone.
METI-DERM,® brand of prednisolone topical.

*T.M.

Schering

MD-J-4-358



recommended dosage



for pernicious anemia
and all treatable anemias

Pronemia

Hematinic LEDERLE

a new and potent oral hematinic
one capsule daily meets the needs of the average patient

Formula contains all known essential hemopoietic factors:

Each capsule contains:	Powdered Stomach..... 200 mg.
Vitamin B ₁₂ with Factor Intrinsic Concentrate..... 1 U.S.P. Oral Unit	Ferrous Sulfate Exsiccated..... 400 mg.
Vitamin B ₁₂ (additional)..... 15 mcgm.	Ascorbic Acid (C)..... 150 mg.
	Folic Acid..... 4 mg.



LEDERLE LABORATORIES DIVISION AMERICAN Cyanamid COMPANY Pearl River, N.Y.

*REG. U.S. PAT. OFF.

Prescriptions Drugs and Biologicals

Our complete and modern stocks of the finest in drugs assures complete satisfaction to doctor and patient. Every prescription given individual attention by our registered pharmacists. Free delivery or courteous counter service.

RALEY-SHADDOCK
PRESCRIPTION PHARMACY

1325 East 15th

Ph. Gibson 7-3133

Three

MODERN STORES

to meet your every
prescription need

DOWNTOWN Sixth and Main

Telephone DI 3-6171
OUR ORIGINAL STORE

EASTSIDE 4624 East 11th

Telephone WE 2-2367
EFFICIENT SERVICE

SOUTHSIDE 1831 East 21st

Telephone RI 2-7304
OUR NEW STORE

We Deliver

GETMAN'S

PRESCRIPTION SPECIALISTS

ROY R. GETMAN, Founder

With The Editor . . .

Everyone applauds the action of seven leading Tulsa druggists in contributing the money usually spent for Christmas presents for doctor-patrons to the Salvation Army's Christmas Cheer Program . . . Hundreds of dollars went in the name of Tulsa Doctors to provide food, toys and other gifts for needy adults and children . . . It is a wise use of money that commends itself to the Christmas spirit . . . A bouquet of thanks to T. Roy Barnes Drugry, Curtain's, Prather's Prescription Shops, Getman's, Professional Drug Shops, Scott Robison's Prescription Stores, and Utica Square Pharmacy . . . The Washington Office of the American Medical Association cooked up an interesting report on doctors who have served in Congress . . . 359 have been members of the House and Senate . . . Of these, 13 were also state and territorial governors at one time . . . Five Doctors signed the Declaration of Independence . . . Pennsylvania has had 52 doctors in Congress, New York 48, and New Jersey 39 . . . And Oklahoma—none . . . Five, of which three have had 15 or more years of service, are members of the present Congress . . . Almost three times as many Americans are admitted to hospitals today as were twenty years ago . . . This startling increase is largely due to the growth of Blue Cross and other plans of hospital and medical care insurance, to greater levels of public education in personal care, and increased family incomes . . . While six out of every 100 Americans were hospitalized in 1936, 13 out of every 100 were admitted in 1956 . . . Another interesting hospital statistic: in 1955 there were 95 full-time employees for each 100 patients in hospitals of all types, an increase of 22 in ten years . . . The males are the weaker sex! . . . Just look at the trouncing the Hillcrest student nurses gave the interns in their fun-filled basketball competition recently . . . The fledgling docs lost by three points . . . No wonder, says Hillcrest's sparkplug Jabour—the nurses played 15 members to a team.



Lilly

QUALITY / RESEARCH / INTEGRITY

refreshing sleep...alert arising

VALMID

(Ethinamate, Lilly)

for your next patient with simple insomnia

... helps your patients over the threshold of sleep, which, once induced, usually continues normally. Because 'Valmid' is a non-barbiturate sedative with a very short action span, it permits a bright awakening without "hang-over" or other side-effects. 'Valmid' is notably safe, even in patients with liver or kidney damage, for whom barbiturates are contraindicated.

Prescribe 1 or 2 Tablets 'Valmid' to be taken about twenty minutes before retiring.

724004

ELI LILLY AND COMPANY • INDIANAPOLIS 6, INDIANA, U. S. A.

THE BULLETIN

OF THE

TULSA COUNTY MEDICAL SOCIETY

G. R. Russell, M.D., *President*Hugh Perry, M.D., *President-Elect*Walter B. Sanger, M.D., *Vice-President*Walter E. Brown, M.D., *Sec.-Treasurer*Jack Spears, *Executive Secretary*

Vol. 23

TULSA, OKLAHOMA, FEBRUARY, 1957

No. 2

PROGRAM OF FUTURE PLANNING OUTLINED

**Tulsa County Medical Society Will Study
Twenty-Point Program To Determine Potential
Benefits To Medicine.**

The Board of Trustees of the Tulsa Medical Society last month approved a long range twenty-point program of activity to implement the present program of the organization.

Included in the program as developed by Dr. G. R. Russell, President, is a study of the potentialities of a medical school at the University of Tulsa, consideration of proposed sweeping changes in the format of the Society's regular meetings, and creation of a mechanism to provide pension plans to participating Tulsa doctors.

"This is largely an exploratory program to determine the reaction of the membership to a number of proposals which our Board of Trustees believes to be progressive and of potential value to Tulsa Medicine and the community," Dr. Russell said. Several points in the program relate to the Society's present activities and functions, while others have a broader community-wide basis.

Dr. Russell said that many of the proposals were derived from a study of the activities of leading county medical societies in other areas, augmented by personal interviews with officers and executive secretaries of those organizations.

The twenty-point program is as follows:

1. Explore the possibilities of eventually establishing a medical school at the University of Tulsa, with considerations as to finance, personnel and faculty requirements, and necessary hospital and clinical facilities.

2. Consider a change in the type of

regular scientific meetings of the Society, and study the desirability of (a) reducing the number of meetings, possibly to a quarterly basis, (b) substituting socio- and medico-economic program topics for the present scientific papers, and (c) holding regular or occasional dinner meetings.

3. Investigate the desirability of organizing specialty sections within the Society which would meet periodically for scientific and other programs.

4. Study group pension plans, or investment programs designed to provide retirement incomes to participating Society members.

5. Continue and enlarge the present program in malpractice prevention and defense as conducted by the Society's Insurance Committee to the point that marked reductions in malpractice actions in Tulsa County can be effected.

6. Study the desirability of relocating the Library of the Tulsa County Medical Society to assure its availability to a maximum number of members.

7. Explore the possibilities of liaison with other professional and scientific groups in Tulsa for mutual improvements in scientific functions and public relations programs.

8. Continue to investigate the possibility of the Society constructing its own headquarters building with emphasis upon methods of finance and desirable locations.

9. Expand the activities of the Medical Credit Bureau to assure a greater source of revenue to the Tulsa County

Medical Society. This would be done primarily by increase in the Bureau's number of regular doctor-patrons.

10. Consider changes in the By-Laws of the Tulsa County Medical Society to create a Nominating Committee. The function of this Committee would be the nominating of a slate of officers for consideration by the membership at the annual business meeting; additional nominations would come from the floor.

ALBERT W. WALLACE, M.D.
1901 - 1956

Dr. Albert Wicken Wallace, 55, widely known Springer Clinic internist, died at his Tulsa home on December 25, 1956. Death was attributed to a cerebral hemorrhage suffered in his sleep.

A native of Cleveland, Ohio, Dr. Wallace received his A.B. Degree from Western Reserve University and in 1928 his medical degree from the Western Reserve University School of Medicine. He interned at St. Luke's Hospital of Cleveland and subsequently completed a residency at the same institution. Dr. Wallace practiced at Watkins Glen, New York from 1930 to 1935, when he moved to Miami Beach, Florida. He served as a Colonel in the Army Air Corps in World War II, and upon his release from service joined the staff of the Springer Clinic of Tulsa.

Dr. Wallace was President of the Tulsa Internists Society and Secretary-Treasurer of the Oklahoma Diabetes Association. He was a fellow of the American College of Physicians. Dr. Wallace was active in boating circles and was Commodore of the Sequoyah Yacht Club at the time of his death.

Survivors include the widow and two daughters. Services were held December 28th at All Souls Unitarian Church.

11. Increased immunization of the Tulsa child and adult population to correct deficiencies noted in a survey conducted in 1955 by the Society and Health Division of the Tulsa Council of Social Agencies.

12. Work in closer cooperation with the Board of County Commissioners, health and welfare groups, social agencies, hospitals, and educational institutions to assume a maximum of high quality medical care for the indigent sick and aged at reasonable expenditures.

13. Encourage a greater interest in local, state and national medical legislation by the average Tulsa physician.

14. Explore the eventual expansion of the Society into a regional medical organization encompassing several counties.

15. Develop programs of interest in problems of maternal care and care of the newborn.

16. Enlarge The Bulletin of the Tulsa County Medical Society by increasing advertising income; provide a greater amount of useful medical news and features.

17. Reinitiate the public medical forums begun in Tulsa several years ago by the Tulsa Academy of General Practice.

18. Amend the By-Laws to create a waiting period suggested at six months for new applicants for membership in the Tulsa County Medical Society. Final election would not take place until the expiration of the waiting period.

19. Continued expansion of medical public relations program with greater emphasis upon the use of television, the press, and health education programs.

20. Work in cooperation with Tulsa hospitals and other civic groups to assure that hospital facilities keep pace with the anticipated heavy growth of Tulsa population.

Virtually all of these projects will be assigned to appropriate standing and special committees of the Society for evaluation.

Dr. Russell noted last month that most county medical societies the size of the Tulsa County Medical Society had or planned to abandon scientific monthly

(Continued On Page 39)

1957 COMMITTEE PERSONNEL

STANDING COMMITTEES

Bulletin

Maxwell A. Johnson, M.D., Chm. (3)
 Robert E. Dillman, M.D. (2)
 Manuel Brown, M.D. (1)

Cancer

Lucien M. Pascucci, M.D. Chm. (2)
 Matthew B. Moore, M.D. (1)
 William C. Pratt, M.D. (3)

Clinic

Ernest S. Kerekes, M.D., Chm. (3)
 Harold A. White, M.D. (1)
 Robert E. Funk, M.D. (2)

Constitution & By-Laws

J. D. Shipp, M.D., Chm. (2)
 John C. Perry, M.D. (1)
 Berget H. Blocksom, M.D. (2)

Golf

Simon Pollack, M.D., Chm. (3)
 Paul N. Atkins, Jr., M.D. (2)
 E. Malcolm Stokes, M.D. (1)

Ethics

E. G. Hyatt, M.D., Chm. (1)
 Howard M. Cohenour, M.D. (2)
 Walter F. Sethney, M.D. (3)

Fraudulent Practices

Alfred H. Bungardt, M.D., Chm. (3)
 Samuel R. Turner, M.D. (2)
 L. A. Munding, M.D. (1)

Grievances

Marshall O. Hart, M.D., Chm.
 John G. Matt, M.D.
 Wilkie D. Hoover, M.D.
 Frank J. Nelson, M.D.
 F. L. Flack, M.D.

Insurance

Marshall O. Hart, M.D., Chm. (2)
 Wilkie D. Hoover, M.D. (1)
 Ralph A. McGill, M.D. (3)

Ladies Auxiliary

Eric M. White, M.D., Chm. (3)
 Margaret G. Hudson, M.D. (1)
 Myra A. Peters, M.D. (2)

Medical Credit Bureau

R. M. Wadsworth, M.D., Chm. (3)
 Donald L. Brawner, M.D. (2)
 Milford S. Ungerman, M.D. (1)

Medical Library

C. S. Lewis, Jr., M.D., Chm. (1)
 William C. Alston, Jr., M.D. (2)
 Robert G. Tompkins, M.D. (2)
 Thomas J. Hardman, M.D. (3)
 Henry A. Brocksmith, M.D. (3)

Program

James C. Peters, M.D., Chm. (1)
 Edward L. Moore, M.D. (2)
 Earl I. Mulmed, M.D. (3)

Public Health

T. Paul Haney, M.D., Chm. (3)
 David V. Hudson, M.D. (2)
 Hugh C. Graham, M.D. (1)

Public Policy

Hugh Perry, M.D., Chm.

Legislation Sub-Committee:

John E. McDonald, M.D., Chm.
 Walter B. Sanger, M.D.
 Charles E. Wilbanks, M.D.

Health Education & Schools

Sub-Committee:

Dixon N. Burns, M.D., Chm.
 Charles H. Eads, M.D.
 Marcella R. Steel, M.D.

Civic Affairs Sub-Committee:

A. B. Carney, M.D., Chm.
 D. L. Edwards, M.D.
 Homer A. Ruprecht, M.D.

Press, Radio & Television

Sub-Committee:

James W. Kelley, M.D., Chm.
 E. N. Lubin, M.D.
 Terrell Covington, Jr., M.D.
 Hall Ketchum, M.D.

50th Anniversary Sub-Committee:

Ralph A. McGill, M.D., Chm.
 John G. Matt, M.D.
 Frank J. Nelson, M.D.

Labor Relations Sub-Committee:

Dave B. Lhevine, M.D., Chm.
 Wendell L. Smith, M.D.
 Ben F. Gorrell, M.D.
 Gerald Cronk, M.D.

Speakers Bureau Sub-Committee:

Paul C. Benton, M.D., Chm.
Vincel Sundgren, M.D.
R. W. Goen, M.D.

Indigent Care Survey Sub-Committee:

E. N. Lubin, M.D., Chm.
James W. Kelley, M.D.
C. M. Hartig, M.D.

Red Cross Blood Center

Felix R. Park, M.D., Chm. (3)
Mary V. Graham, M.D. (1)
William F. Thomas, Jr., M.D. (1)
Leo Lowbeer, M.D. (2)
Emil E. Palik, M.D. (2)

Welfare

F. L. Flack, M.D. Chm. (3)
Fred E. Woodson, M.D. (2)
D. O. Smith, M.D. (1)

SPECIAL COMMITTEES**Building**

Ralph A. McGill, M.D., Chm.
Walter E. Brown, M.D.
Frank J. Nelson, M.D.

Civil Defense

Gifford H. Henry, M.D., Chm.
Maxwell A. Johnson, M.D.
Hays R. Yandell, M.D.

Community Chest

James W. Kelley, M.D., Co-Chm.

The personnel of twenty-five standing and special committees of the Tulsa County Medical Society was announced last month by Dr. G. R. Russell, President. A complete list of committees appears on Pages 9 and 10. The terms of office served by members of standing committees is indicated by the numeral following the name. Those marked "(1)" serve until December 31, 1957, "(2)" until December 31, 1958, and "(3)" until December 31, 1959. Members of the Public Policy Committee and all special committees serve only through 1957. Membership of the Grievances Committee is composed of the five immediate past-presidents of the Society.

R. M. Wadsworth, M.D., Co-Chm.
R. W. Goen, M.D.
Wilkie D. Hoover, M.D.
A. B. Carney, M.D.
Frank J. Nelson, M.D.
C. G. Stuard, M.D.
Donald L. Brawner, M.D.
Dave B. Lhevine, M.D.
William A. Waters, M.D.
C. S. Lewis, Jr., M.D.
Simon Pollack, M.D.
Gifford H. Henry, M.D.
Edward L. Moore, M.D.
James W. White, M.D.
Homer A. Ruprecht, M.D.
Marshall O. Hart, M.D.
Arnold H. Ungerman, M.D.

Hospital Relations

Emil E. Palik, M.D., Chm.
A. B. Carney, M.D.
W. Carl Lindstrom, M.D.
Wade Sisler, M.D.

Industrial Medicine

Wilkie D. Hoover, M.D., Chm.
Tom Hall Mitchell, M.D.
Worth M. Gross, M.D.
Nolan C. Riley, M.D.
William H. Buchan, M.D.
Frank A. Stuart, M.D.
Nevin W. Dodd, M.D.

Medicare

Walter E. Brown, M.D., Chm.
S. C. Shepard, M.D.
W. Carl Lindstrom, M.D.

Military Affairs

Jack O. Akins, M.D., Chm.
Paul N. Atkins, Jr., M.D.
Henry S. Browne, M.D.
Logan A. Spann, M.D.
Samuel J. Bradfield, M.D.

Postgraduate Study

Vance Lucas, M.D., Chm.
Sol Wilner, M.D.
Earl I. Mulmer, M.D.
Homer D. Hardy, Jr., M.D.
Lucien M. Pascucci, M.D.
Lester I. Nienhuis, M.D.
Robert M. Shepard, Jr., M.D.
James B. Thompson, M.D.
Sumner Yale Andelman, M.D.
Leo Lowbeer, M.D.
Dean C. Walker, M.D.
William F. Thomas, Jr., M.D.

NEW



effective
in more
clinically
important
infections

'CATHOCILLIN'

(CATHOMYCIN-PENICILLIN G)

COMPARE THESE ADVANTAGES:

Indicated in the largest number of clinically important infections including those caused by antibiotic-resistant *staphylococci* and *Proteus*. Therapeutic, *bactericidal* blood levels are promptly achieved. Generally well tolerated because the normal intestinal flora is not appreciably disturbed by CATHOCILLIN. No cross-resistance, yeast or fungal super-infections, vaginitis or proctitis have been reported with CATHOCILLIN.

Consider Cathocillin for these clinically important infections: tonsillitis; pharyngitis; pneumonia; otitis media; streptococcal sore throat; infected tooth sockets; Vincent's infection; acne and superficial skin infections; impetigo; boils, furuncles and carbuncles; lung abscess; bronchitis; mastitis; osteomyelitis; wound infections; postoperative wound infections and infected lacerations; staphylococcal enteritis, staphylococcal diarrhea of the newborn; peritonitis (caused by susceptible organisms); pelvic inflammatory disease; gonorrhea,

gonococcal arthritis; urethritis; scarlet fever; erysipelas.

Dosage: for adults, 2 capsules q.i.d.; where preferred, t.i.d. dosage can be used with bed-time dose doubled. For children under 100 lbs., dosage in proportion to weight (e.g., 1 capsule q.i.d. for a child weighing 50 lbs.).

Supplied: Blue and white capsules of CATHOCILLIN, each containing Sodium Novobiocin (equivalent to 125 mg. of Novobiocin) and Potassium Penicillin G 75 mg. (125,000 units); bottles of 16 and 100.

In one prescription the one antibiotic combination most likely to be effective



MERCK SHARP & DOHME

DIVISION OF MERCK & CO., INC.
PHILADELPHIA 1, PA.

PRESIDENT'S PAGE

I have long been intrigued by the possibilities of a greater liaison between medicine and other scientific and professional groups—dentists, veterinarians, chemists, geologists, engineers, etc. We have much to learn from each other, and an interchange of information should be extremely profitable to all. As a typical example, the mechanical engineer has played an important role in the design and construction of many machines of tremendous value to medicine—the oxygenator, for instance, now in wide use in cardiac surgery. Some progress towards a greater liaison with these groups was made last year when a group of our doctors met with representative engineers for informal discussions of scientific problems. Those who attended were fascinated at the possibilities of the role engineering can and should play in diagnostic and therapeutic medicine.

The problems of the professional groups are similar in a social and economic sense, too. There is a definite need for joining forces on legislative problems, such as all-out efforts to secure passage of the Jenkins-Keogh type of bill to permit professional men to invest tax-free income in pension plans. Medicine is in need of such support, not only for beneficial projects but to combat the "creeping socialism" which is marking the character of our government. A liaison with other scientific and professional groups would naturally contribute to our public relations and encourage a greater understanding of the practical problems of modern medicine.

Many doctors feel the Tulsa County Medical Society must eventually move to its own building. This will present financial problems, and it is not outside the realm of possibility that our quarters could be combined with those of other professional organizations. The result might be a Magic Empire Academy of Science, an asset to the community and to the scientific professions. If you believe this idea has merit, I would appreciate your comments and suggestions for putting it into operation.

Sincerely,



President

Since 1916 . . .

al MUSICK DRUG

NORTH AND WEST

Store Number One

529 NO. DENVER

Telephone

LU 4-7288

||
City-Wide Delivery
||

NORTH AND EAST

Store Number Two

APACHE & GARRISON

Telephone

DI 3-3003

Prather's PRESCRIPTION SHOPS

·PRESCRIPTIONS
·SICK ROOM NEEDS

·PHARMACEUTICALS
·BIOLOGICALS

FREE PRESCRIPTION DELIVERY
TWO LOCATIONS TO SERVE YOU

TULSA'S ORIGINAL PRESCRIPTION
DRUG STORE

Gibson 7-0121



**MED ARTS BLDG.
106 W. 6th**

TULSA'S ORIGINAL PRESCRIPTION
DRIVE-IN STORE

Webster 9-5411



**3008 E. 15th
15th & COLLEGE**



THE MEDICAL LIBRARY

Library of the Tulsa County
Medical Society



Miss Irma A. Beehler, *Librarian*

GIFTS OF THE MONTH—:

- Anonymous.** U. S. Army Medical Service. Surgery in World War II. Volume 2, General Surgery. Editor in Chief, John Boyd Coates, Jr.; Editor for Surgery, Michael E. DeBakey. 417 pp., illustrated. Office of the Surgeon General, Department of Army, 1955.
- Chattanooga Public Library, Chattanooga, Tennessee.** Six medical journals.
- Dr. Safety R. First.** Miscellaneous issues of various medical journals.
- Naval Medical Field Research Laboratory Library, Marine Barracks, Camp Lejeune, North Carolina.** Two medical journals.
- Tulsa Medical Service Association.** A contribution in memory of Dr. Silas Murray.
- University of Texas, Southwestern Medical School Library, Dallas, Texas.** Twenty-eight medical journals.

RECENT PUBLICATIONS BY MEMBERS OF THE TULSA COUNTY MEDICAL SOCIETY—:

- Dr. John G. Matt.** Review of A Dictionary of Dietetics, by Rhoda Ellis, Ph.D. 152 pp., Philosophical Library, Inc., New York, N.Y., 1956. Journal of the Oklahoma State Medical Association, 49:550 (December) 1956.
- Dr. Robert W. Spencer.** Tonography in the Clinical Management of Glaucoma. A.M.A. Archives of Ophthalmology, 56:797-818 (December) 1956.
- Dr. Averill Stowell.** The Scalenus Anticus Syndrome. Journal of the International College of Surgeons, 26:711-717 (December) 1956.

RECENT ACQUISITIONS—:

- Diseases of the Breast.** By C. D. Haagensen, M.D. 751 pp., illustrations and charts. W. B. Saunders Company, Philadelphia, Pennsylvania, 1956.
- The Body Fluids: Basic Physiology and Practical Therapeutics.** By J. Russell Elkin-ton and T. S. Danowski. 626 pp., illustrated. Williams & Wilkins Company, Baltimore, Maryland, 1955.
- Allergy In Childhood.** By Jerome Glaser, M.D., Assistant Professor of Pediatrics, University of Rochester School of Medicine and Dentistry. 529 pp., illustrated. (American Lecture Series, Publication #272. A monograph in the Bannerstone Division of American Lectures In Allergy). Charles C. Thomas, Publisher, Springfield, Illinois, 1956.
- Clinical Examinations In Neurology.** Mayo Clinic and Mayo Foundation, Rochester, Minnesota. 370 pp., illustrated. W. B. Saunders Company, Philadelphia, Pennsylvania, 1956.
- Doctor And Patient And The Law.** By Louis J. Regan, M.D., LL.B. Third Edition. 716 pp. C. V. Mosby Company, St. Louis, Missouri, 1956.
- Clinical Toxicology.** By Clinton H. Thienes and Thomas J. Haley. Third Edition, enlarged and thoroughly revised. 457 pp., illustrated, Lea & Febiger, Philadelphia, Pennsylvania, 1955.
- Clinical Hematology.** By Maxwell M. Wintrobe, M.D. Fourth Edition, thoroughly revised. Lea & Febiger, Philadelphia, Pennsylvania, 1956.



NEW YORK SURGEON SPEAKS TO SOCIETY FEBRUARY 11TH

Dr. Henry Doubilet, Associate Professor of Surgery, New York University School of Medicine, New York, N. Y., will be guest speaker for the Tulsa County Medical Society on Monday, February 11, 1957, at 8:00 P.M. His subject will be "Pancreatic Pathology As Visualized by Pancreatography."

The meeting will be held in the Auditorium of the Blue Cross-Blue Shield Building, 1215 South Boulder. Telephone service is available only by calling LUther 5-9149.

Dr. Doubilet is a native of Montreal, Canada, and received his medical degree in 1929 from McGill University School of Medicine. He interned at Royal Victoria Hospital of Montreal and subsequently completed a residency in surgery at the same institution. For the following three years he did research in experimental surgery as a Rockefeller Fellow at McGill University School of Medicine. In 1933 he was appointed to the Ralph Colp Fellowship In Physiology at Mount Sinai Hospital. In 1938 he did post-graduate work in surgery at New York University and was shortly thereafter appointed to the Faculty of the Medical School. Dr. Doubilet served as a Major in the Army Medical Corps during

World War II. He is a diplomate of the American Board of Surgery, fellow of the American College of Surgeons, and member of numerous medical organizations. Widely known as a medical writer and lecturer, Dr. Doubilet will go to England in April to speak at several large medical centers.

Dr. Doubilet's presentation on pancreatic pathology as visualized by pancreatography was one of the more widely acclaimed papers at the June, 1956, meeting of the American Medical Association in Chicago, Illinois.

Two other prominent American physicians have been scheduled to speak to the Tulsa County Medical Society in March and April, 1957, it was announced last month by Dr. James C. Peters, Chairman of the Program Committee. They are:

Dr. Ben Eiseman, Chief, Surgical Services, United States Veterans Administration Hospital, Denver, Colorado, to appear on Monday, March 11th. His subject will be "Liver Disease."

Dr. George R. Herrmann, Professor of Medicine, University of Texas Medical School, Galveston, Texas, to appear on Monday, April 8th. His subject will be "Heart Disease of Pulmonary Disease Origin."

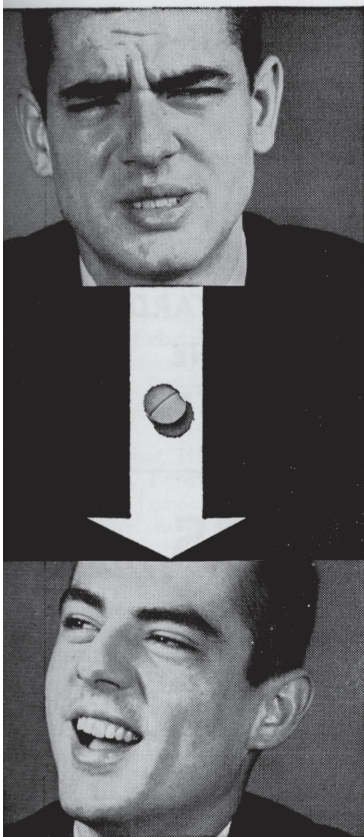
Due to the annual meeting of the Oklahoma State Medical Association in Tulsa, May 6-8, no meeting of the Society is scheduled for that month.

WILBANKS TO HEAD G.P.'s

Dr. Charles E. Wilbanks has been named President-Elect of the Tulsa Academy of General Practice. He will serve in 1958, succeeding Dr. Wendell L. Smith, who took office as President on January 1st.

Other officers selected by the group included: Dr. Homer D. Hardy, Jr., Vice-President; Dr. Harlan Thomas, Secretary-Treasurer; and Dr. Marshall O. Hart, elected to a three-year term on the Board of Directors.

DR. RAYMOND M. MICHOLS attended a Postgraduate Study Course In Orthopedic Anatomy at New York University School of Medicine, New York, N.Y., January 6-12, 1957.



Cantil

for the colon

ulcerative colitis • irritable colon • mucous colitis • spastic colitis • diverticulitis, diverticulosis • rectospasm • diarrhea following G.I. surgery • bacillary and parasitic disorders

EFFECTIVE

relieves pain, cramps, diarrhea
helps restore normal tone and motility

SELECTIVE

avoids widespread autonomic disturbance
unusually free of "antispasmodic" side effects,
urinary retention

HOW CANTIL IS PRESCRIBED

One or two tablets three times a day preferably with meals and one or two tablets at bedtime.

CANTIL—TWO FORMS

CANTIL (plain)—25 mg. of CANTIL in each scored tablet—bottles of 100.

CANTIL with Phenobarbital—25 mg. of CANTIL and 16 mg. of phenobarbital (Warning: May be habit forming.) in each scored tablet—bottles of 100.

CANTIL is the *only* brand of N-methyl-3-piperidyl-diphenylglycolate methobromide.

*For more detailed information, request Brochure No. NDA 16,
Lakeside Laboratories, Milwaukee 1, Wisconsin.*

**LAKESIDE**

*Two fine prescription
pharmacies to serve you*

NO. ONE
603 S. BOULDER
TELEPHONE
CH 2-3118

NO. TWO
44 N. HARVARD
TELEPHONE
MA 6-1111

T. ROY BARNES
D R U G R Y

Your Guarantee of Reliable Prescription Service

**WHY
SENSITIZE?**

USE

'POLYSPORIN'[®] brand

Polymyxin B—Bacitracin Ointment

when treating topical and ophthalmic infections

A BROAD-SPECTRUM ANTIBIOTIC OINTMENT

For topical use: ½ oz. and 1 oz. tubes.
For ophthalmic use: ¼ oz. tubes.



BURROUGHS WELLCOME & CO. (U.S.A.) INC., Tuckahoe, New York

FEBRUARY MEDICAL CALENDAR

FRIDAY, February 1st:

St. John's Isotope Committee Meeting, St. John's Hospital, 8:30 A.M.
 St. John's Tumor Clinic, Clinical Conference, 9:30 A.M.
 X-Ray Conference, Hillcrest Medical Center, 3:30 P.M.
 Journal Club Meeting, Hillcrest Medical Center, 6:00 P.M. Subject: "Surgery and Peripheral Muscular Diseases." Speakers: Drs. Lester I. Nienhuis, C. S. Lewis, Jr., and Benjamin W. Ward.

SATURDAY, February 2nd:

Pathological Tissue Conference, Hillcrest Medical Center, 8:30 A.M.
 Medical Telecast, "House Call" series, Television Station KOTV, 4:30 P.M.

SUNDAY, February 3rd:

Medical Telecast, "Medical Horizons" series, Television Station KTVX, 3:30 P.M.

MONDAY, February 4th:

Ninth Annual Meeting, Oklahoma Academy of General Practice, Biltmore Hotel, Oklahoma City. Continues through February 5th.
 Staff Meeting, Hillcrest Medical Center, 8:00 P.M.

TUESDAY, February 5th:

St. John's Tumor Clinic, 8:00 A.M.
 Interns and Residents Lecture, St. John's Hospital, 12:30 P.M. Subject: "Acute Fluid and Electrolyte Disturbances in Children." Speaker, Dr. H. J. Rubin.

WEDNESDAY, February 6th:

St. John's Isotope Clinic, St. John's Hospital, 8:30 A.M.
 Board of Trustees Meeting, Tulsa County Medical Society, B9 Medical Arts Building, 1:00 P.M.

THURSDAY, February 7th:

Medical Section Meeting, St. John's Hospital, 8:30 A.M.
 Surgical Section Meeting, St. John's Hospital, 9:00 A.M.
 Urology Section Meeting, St. John's Hospital, 9:00 A.M.

FRIDAY, February 8th:

St. John's Isotope Committee Meeting, St. John's Hospital, 8:30 A.M.
 St. John's Tumor Clinic, Clinical Conference, 9:30 A.M.
 X-Ray Conference, Hillcrest Medical Center, 3:30 P.M.

SATURDAY, February 9th:

Pathological Tissue Conference, Hillcrest Medical Center, 8:30 A.M.
 Medical Telecast, "House Call" series, Television Station KOTV, 4:30 P.M.

SUNDAY, February 10th:

Medical Telecast, "Medical Horizons" series, Television Station KTVX, 3:30 P.M.

MONDAY, February 11th:

Scientific Meeting, Tulsa County Medical Society, Blue Cross-Blue Shield Building, 1215 South Boulder, 8:00 P.M. Subject: "Pancreatic Pathology As Visualized by Pancreatography." Speaker, Dr. Henry Doubilet, Associate Professor of Surgery, New York University College of Medicine, New York, N. Y.

TUESDAY, February 12th:

St. John's Tumor Clinic, 8:00 A.M.
 Pediatrics Section Meeting, St. John's Hospital, 9:00 A.M.
 Pharmacy Demonstration, Hillcrest Medical Center, 12:30 P.M.
 Interns and Residents Lecture, St. John's Hospital, 12:30 P.M. Subject: "Acute Cardiac Disturbances in Childhood." Speaker, Dr. Leonard L. Kishner.
 Anesthesiology Conference, St. John's Hospital, 3:30 P.M.
 Postgraduate Lecture in Internal Medicine, Hillcrest Medical Center, 5:30 P.M. Subject: "Obesity." Speaker, Dr. Earl M. Lusk.

WEDNESDAY, February 13th:

St. John's Isotope Clinic, St. John's Hospital, 8:30 A.M.
 Postgraduate Short Course, University of Oklahoma School of Medicine, Oklahoma City, 3:30 P.M. Subject: "Heart Disease in Children."
 Clinical Pathological Conference, Hillcrest Medical Center, 7:30 P.M.
 Clinical Pathological Conference, St. John's Hospital, 7:15 P.M.

THURSDAY, February 14th:

Medical Section Meeting, St. John's Hospital, 8:30 A.M.
 Surgical Motion Picture, Hillcrest Medical Center, 12:30 P.M. Subject: "Resection of Right Colon for Carcinoma."

FEBRUARY MEDICAL CALENDAR

FRIDAY, February 15th:

Copy deadline for the March issue of The Bulletin.

St. John's Isotope Committee Meeting, St. John's Hospital, 8:30 A.M.

St. John's Tumor Clinic, Clinical Conference, 9:30 A.M.

X-Ray Conference, Hillcrest Medical Center, 3:30 P.M.

Journal Club Meeting, Hillcrest Medical Center, 6:00 P.M. Subject: "Current Trends in Biliary Tract Diseases." Speakers: Drs. Harold J. Black, James B. Thompson, and James H. Neal, Jr.

SATURDAY, February 16th:

Pathological Tissue Conference, Hillcrest Medical Center, 8:30 A.M.

Medical Telecast, "House Call" series, Television Station KOTV, 4:30 P.M.

SUNDAY, February 17th:

Medical Telecast, "Medical Horizons" series, Television Station KTVX, 3:30 P.M.

MONDAY, February 18th:

Clinical Pathological Conference, St. John's Hospital, 7:15 P.M.

Staff Meeting, St. John's Hospital, 8:00 P.M.

TUESDAY, February 19th:

St. John's Tumor Clinic, 8:00 A.M.

Interns and Residents Lecture, St. John's Hospital, 12:30 P.M. Subject: "Management of Abnormal Presentation." Speaker, Dr. W. Carl Lindstrom.

Board of Directors Meeting, Tulsa County Public Health Association, 808 South Peoria, 7:30 P.M.

Surgical Section Meeting, Hillcrest Medical Center, 7:30 P.M.

X-Ray Conference, St. John's Hospital, 8:00 P.M.

WEDNESDAY, February 20th:

St. John's Isotope Clinic, St. John's Hospital, 8:30 A.M.

Medical Section Meeting, Hillcrest Medical Center, 6:00 P.M.

Medical Assistants Society Meeting, Danner's Cafeteria, 6:30 P.M.

THURSDAY, February 21st:

Medical Section Meeting, St. John's Hospital, 8:30 A.M.

Obstetrics & Gynecology Section Meeting, St. John's Hospital, 8:30 A.M.

FRIDAY, February 22nd:

Third Annual Pathological, Radiological, Surgical Symposium opens at University of Oklahoma School of Medicine. Continues through February 23rd.

St. John's Isotope Committee Meeting, St. John's Hospital, 8:30 A.M.

St. John's Tumor Clinic, Clinical Conference, 9:30 A.M.

X-Ray Conference, Hillcrest Medical Center, 3:30 P.M.

SATURDAY, February 23rd:

Pathological Tissue Conference, Hillcrest Medical Center, 8:30 A.M.

Medical Telecast, "House Call" series, Television Station KOTV, 4:30 P.M.

SUNDAY, February 24th:

Medical Telecast, "Medical Horizons" series, Television Station KTVX, 3:30 P.M.

MONDAY, February 25th:

Scientific Program, Tulsa Academy of General Practice, Hotel Tulsa, 6:30 P.M. Subject: "Injuries to Children and in the Home." Speaker, Dr. Robert H. Lennox, Associate Professor of Pediatrics, Tulane University School of Medicine, New Orleans, Louisiana.

TUESDAY, February 26th:

St. John's Tumor Clinic, 8:00 A.M.

Pediatrics Section Meeting, St. John's Hospital, 9:00 A.M.

Interns and Residents Lecture, St. John's Hospital, 12:30 P.M. Subject: "Management of Acute Excitement States." Speaker, Dr. John F. Gray.

Postgraduate Lecture in Internal Medicine, Hillcrest Medical Center, 5:30 P.M. Subject: "Arteriosclerotic Heart Tissue." Speaker, Dr. Safety R. First.

Obstetrics & Gynecology Section Meeting, Hillcrest Medical Center, 7:30 P.M.

WEDNESDAY, February 27th:

St. John's Isotope Clinic, St. John's Hospital, 8:30 A.M.

THURSDAY, February 28th:

Medical Section Meeting, St. John's Hospital, 8:30 A.M.

Surgical Motion Picture, Hillcrest Medical Center, 12:30 P.M. Subject to be announced.

The only ORAL sun tanning agent and sun protectant...

OXSORALEN[®] Capsules

(brand of methoxsalen (8-MOP)* Elder)

The busiest physician can obtain a sun tan with Oxsoralen...

Considerable tanning may be produced in a matter of a few days, sometimes equivalent in degree to that previously achieved by a full summer of sun exposure...

...in normal individuals Oxsoralen, together with measured periods of sun exposure, results in increased pigmentation...and persons with fair complexions who tolerate sunlight poorly can expose themselves for short periods without the usual painful reactions.

definite dosage schedule now determined...

Adults: two capsules at one time during the day, approximately two hours before exposure to sunlight (but never more than 2 capsules daily). Taking medication after meals or with a glass of milk appears to minimize any gastrointestinal side effects—if any. Limit exposure time to sunlight at the start of treatment (first 3 or 4 days) to same period of time normally tolerated without medication—usually 30 minutes or less. Gradually increase time of exposure to sunlight.

caution...when Oxsoralen Capsules are being used to *augment tanning*, the period of treatment should not exceed two weeks (28 capsules). When used as a sun protectant, which may require medication for longer periods of time, a liver function test (bromsulphalein preferably) should be performed monthly.

important...Oxsoralen Capsules are a potent drug. To prevent harmful effects, the physician must carefully instruct the patient in their proper use. In order to obtain beneficial results from this therapy, it is necessary that the patient closely adhere to the suggested dosage schedule. Patient instruction sheets are available upon request.

supply...Oxsoralen Capsules, packages of 28 and 100, on prescription only. Each capsule contains 10 mg. methoxsalen (8-methoxy psoralen).

*Patents pending

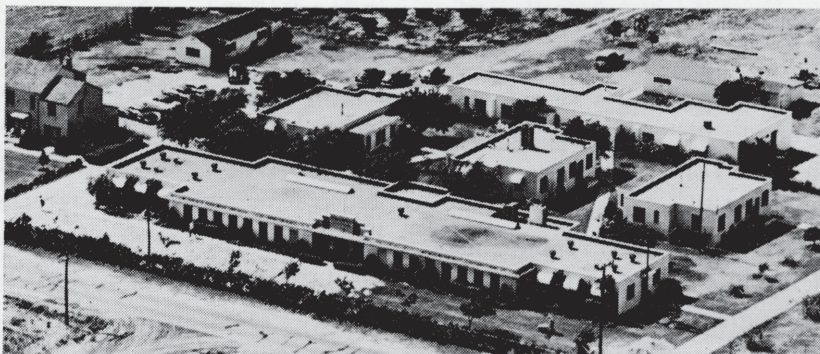


PAUL B. ELDER COMPANY

BRYAN • OHIO

NOW LEASING**Professional Building, 4926 East 21st**

Fully air-conditioned space for nine medical doctors and pharmacy. Ready for occupancy April 15, 1957. Parking for fifty cars. This desirable location is just across the street from the new Suburban Sears location, and the proposed Wedgewood Shopping Center. The Mayo Meadows Shopping Center is also at 21st and Yale. The new four million dollar hospital at 21st and Darlington is but a few blocks east.

*Join The Suburban Trend***CALL JIM NUCKOLLS, BUILDER****RI 2-2361 or WE 2-9665****The COYNE CAMPBELL SANITARIUM****COYNE H. CAMPBELL, M.D.***Chief of Staff*

Post Office Box 6246

Oklahoma City 11, Okla.

Telephone GA. 7-2441

Owned by the Oklahoma Medical Research Foundation

**GENERAL PRACTICE GROUP
TO HEAR PEDIATRICIAN**

Dr. Robert H. Lennox, Associate Professor of Pediatrics at Tulane University School of Medicine, New Orleans, Louisiana, will be guest speaker for the Tulsa Academy of General Practice on Monday, February 25, 1957, at Hotel Tulsa. His subject will be "Injuries to Children and in the Home."



Dr. Lennox

The meeting will be a dinner beginning at 6:30 P.M.

Reservations may be made by calling LUther 4-7925 or LUther 2-5904. All medical doctors of Tulsa County and Northeastern Oklahoma are invited and urged to attend. The scientific program will be at 8:00 P.M.

Dr. Lennox is a graduate of McGill University of Montreal, Canada, receiving his Bachelor of Science Degree in 1939 and his Medical Degree in 1943. Following military service with the Royal Canadian Naval Volunteers in World War II, he returned to McGill for additional work in tropical medicine. His residency in Pediatrics was served at Montreal Children's Hospital from 1946 to 1950. He then joined the faculty of McGill University School of Medicine as Demonstrator in Pediatrics. In 1956 Dr. Lennox joined Tulane University School of Medicine, where he has been associated with Dr. Ralph V. Platou in the Department of Pediatrics. He is the author of numerous scientific publications and member of several national medical organizations.

Dr. Wendell L. Smith, President of the Academy, said a special invitation was being issued to pediatricians in the area to attend the February 24th meeting.

FOR RENT: Professional office space, four or seven room suite. Ground floor, air-conditioned, janitor service. Brookside Professional Building, 25th and Peoria, Tulsa, telephone RIVERSIDE 7-7505.

**UTE TRAIL
RANCH**

POWDERHORN, COLO.

A Western Camp

For Boys — Ages

8 - 15 years

For Information, call

Mrs. Walter E. Brown

RI 2-2332

**ETHICAL
PRESCRIPTION
SERVICE**

Registered Graduate
Pharmacists Only

PROMPT DELIVERY

Riverside 2-3387

**VERLE SMITH'S
PRESCRIPTION SHOP**

IN BROOKSIDE
3409 SOUTH PEORIA

Week Days 8 A.M. to 10:00 P.M.

Sundays and Holidays

9:00 A.M. - 12:00 Noon

6:00 P.M. - 9:00 P.M.

You are now eligible . . .

for \$20,000 GROUP LIFE INSURANCE under the Oklahoma State Medical Association Insurance Trust Program with the Massachusetts Mutual Life Insurance Company, including Waiver of Premium and Accidental Death Benefits up to age 60 providing 75% of those members currently insured apply for this additional insurance before March 15, 1957, as such will become effective as of that date. For those age 60 through 64, \$15,000 group life is available, and for those in the age bracket 65 through 69, \$5,000 can be in effect.

New Members—

Are eligible for 60 days with no medical requirements.

Members Under Age 40—

Can apply if a personal health statement can be satisfactorily completed.

Members Over Age 40 and Under Age 65—

Can apply subject to a medical examination.

Since March 15, 1956, Life Insurance Benefits of \$30,000 have been paid on claims.

For Further Information, Write:

OKLAHOMA STATE MEDICAL INSURANCE TRUST

1240 First National Building

Oklahoma City, Okla.

Or Call J. HAWLEY WILSON, CLU, Oklahoma City, FO 5-1456

Your rate is based on your nearest age of March 15, 1957

GROUP TERM LIFE, ACCIDENTAL DEATH, DISMEMBERMENT, AND LOSS OF SIGHT RATES

30	\$20,000	\$101.20	50	\$20,000	\$291.00
31	20,000	104.80	51	20,000	311.60
32	20,000	109.00	52	20,000	334.00
33	20,000	113.40	53	20,000	358.40
34	20,000	118.20	54	20,000	385.00
35	20,000	123.40	55	20,000	413.80
36	20,000	129.40	56	20,000	445.20
37	20,000	135.60	57	20,000	479.20
38	20,000	142.40	58	20,000	516.20
39	20,000	150.00	59	20,000	556.60
40	20,000	158.00	60	15,000	450.30
41	20,000	166.80	61	15,000	485.86
42	20,000	176.40	62	15,000	524.86
43	20,000	186.80	63	15,000	566.86
44	20,000	198.20	64	15,000	612.76
45	20,000	210.60	65	5,000	214.80
46	20,000	224.00	66	5,000	232.80
47	20,000	238.80	67	5,000	252.30
48	20,000	254.60	68	5,000	273.45
49	20,000	272.20	69	5,000	296.45

**APPLICATION FOR PARTICIPATION IN THE
OKLAHOMA STATE MEDICAL ASSOCIATION INSURANCE TRUST**

I HEREBY AGREE TO PARTICIPATE IN THE GROUP INSURANCE OF THE OKLAHOMA STATE MEDICAL ASSOCIATION INSURANCE TRUST UNDERWRITTEN BY THE MASSACHUSETTS MUTUAL LIFE INSURANCE COMPANY.

NAME (PLEASE PRINT)

FIRST NAME

MIDDLE INITIAL

LAST NAME

MAILING ADDRESS

STREET OR BOX

CITY

STATE

DATE OF BIRTH

MONTH

DAY

YEAR

MALE

FEMALE

RELATIONSHIP OF
BENEFICIARY

BENEFICIARY (PLEASE PRINT)

FIRST NAME

MIDDLE INITIAL

LAST NAME

DATE

19

SIGNATURE

MAIL TO ADDRESS ON OPPOSITE PAGE

Prescriptions

Demand the finest in expert care and compounding. Our staff of trained registered pharmacists are your guarantee of the best in ethical and reliable prescription service. They will handle your prescriptions with the same degree of care and efficiency that Purdy's has been noted for in the past. Courteous counter service for your patients.

You are invited to visit our attractive new Number Two Store at 2570 South Harvard.

PURDY'S PHARMACY

3102 S. HARVARD

Telephone

RI 7-4550

RI 3-1341

2570 S. HARVARD

Telephone

RI 2-7349

"Prescriptions Triple Checked"

FREE CITY-WIDE DELIVERY FROM BOTH STORES

Charge Accounts Invited

NEW MEDICAL LEGISLATION EXPECTED IN CONGRESS

The newly convened Federal Congress may be expected to consider a number of important medical and health bills during its current session, Oklahoma doctors were told last month by representatives of the Washington Office of the American Medical Association.

In a meeting of Arkansas and Oklahoma physicians called at Fort Smith, Arkansas, on January 10th, Dr. Cyrus H. Maxwell, Assistant Director, and Mr. George E. Connery, Editor, noted the following as major pieces of anticipated legislative activity:

1. A bill to forbid Hill-Burton hospital construction funds to religious organizations.
2. A drive by the Department of Health, Education and Welfare to improve the medical care and public health of Indians.
3. Renewal of efforts to pass a bill similar to the Jenkins-Keogh bills of previous sessions to permit doctors and other professional men to divert tax-free income to pension plans.
4. Federal health insurance for some government employees, depending largely upon the results of pilot studies now being conducted in San Antonio, Texas.
5. Medical, health and rehabilitation programs for the handicapped through increased Federal financing.
6. An extension of the doctor draft affecting physicians under age 35.
7. Grants-in-aid to the states for problems of the aged.
8. Appropriations to aid physical construction in existing medical schools.
9. Permission to private insurance companies to pool their resources to offer more extensive health care plans for public sale.
10. A hotly contested bill to require Veterans Administration Hospitals to secure signed statements of assets from all patients before their admission.

Tulsa doctors in attendance included Dr. John E. McDonald, a member of the AMA Legislative Committee, Dr. G. R. Russell, Dr. Walter B. Sanger, and Dr. Marshall O. Hart. About 30 Arkansas and Oklahoma doctors were present.

Rx

TRI-CALSATE

The Buffered Gastric Antacid



For Effective Peptic Ulcer and Gastric Hyperacidity Control

Tri-Calsate has been widely prescribed for more than a quarter of a century in the medical management of peptic ulcer and the gastric hyperacidity syndrome. It has proven effective and safe for continuing treatment.

May be prescribed in water or mixed with milk to combine medication with nutriment. No dangerous side effects have ever been reported from maximum Sippy dosage.

Available on Rx in 4½ oz. & 18 oz. bottles

Producers also of Granular Effervescent Caknam, the urinary alkalizer and Tri-Calgescic, the buffered analgesic.

F. H. PAXTON & SONS, INC.

Pharmaceuticals

1608 NORTH PARK AVE.

CHICAGO 14, ILL.

SPARTAN DRUG

6343 East Tecumseh
Telephone TEmple 5-4076

*Serving Spartan-
Douglas-American
Area*

**PRESCRIPTIONS SENT TO US
WILL BE PROMPTLY FILLED**

Two Pharmacists to Serve You
STEVE LAWRENCE
JOHN ADAMS

RICH AND CARTMILL

St. Paul - Mercury
INSURANCE

Serving Tulsa
Doctors For
Thirty-Three Years

H. Robert Wood John R. Cartmill
Edward L. Bentley I. D. Rich

109 West 4th
Telephone GI 7-4173

TELEVISION PROGRAM ADDED TO ANNUAL MEETING EVENTS

A closed circuit television presentation featuring four leading medical personalities in a discussion of "Psychiatry In General Practice" has been added to the scientific program of the 51st Annual Meeting of the Oklahoma State Medical Association in Tulsa, May 6-8, 1957.

The hour-long program is sponsored by Smith, Kline & French Laboratories and will emanate from Chicago, Illinois, at 2:00 P.M. on Monday, May 6th. Names of the panelists will be announced later. A telephone hook-up will enable Oklahoma doctors to ask questions of the participants. Clinical material include three types of psychiatric patients: the mild, the in-between, and the serious.

Dr. Edward L. Moore, Program Chairman, announced last month that Dr. Joe Vincent Meigs, Boston, Massachusetts, had withdrawn as a guest speaker and would be replaced by another leading personality in the field of Obstetrics & Gynecology.

Another addition to the scientific program is a schedule of selected surgical and medical motion pictures to be shown on Monday and Tuesday mornings in the Terrace Room of The Mayo.

TECHNICIANS SET PROGRAM

Dr. Walter E. Brown, Tulsa radiologist, will be guest speaker for the Tulsa Society of X-Ray Technicians, on Tuesday, February 12, 1957, at Utica Square National Bank. He will show a new motion picture about radiology entitled "First, A Physician." The film has not been previously shown here. All doctors are invited to attend. The meeting will be at 7:30 P. M.

DR. ROBERT L. ANDERSON was guest speaker for the Kay-Noble County Medical Society at Ponca City, Oklahoma, on January 15, 1957.

DR. DAVE LHEVINE has returned from New York, N.Y. where he spent three weeks studying cobalt therapy at leading hospitals.

Its a girl for DR. and MRS. ROBERT W. SPENCER, born December 29, 1956

Upjohn

Penicillin plus triple sulfonamides

Biosulfa* Tablets

(125M, 250M, 500M)

Each tablet contains:

Penicillin G Potassium,
crystalline125,000 units
or 250,000 units
or 500,000 units

Sulfadiazine0.167 Gm.

Sulfamerazine0.167 Gm.

Sulfamethazine0.167 Gm.

Adult dosage: 125M — 2 tablets
every four to six hours; 250M and
500M — 1 to 2 tablets every six
hours.

Available in bottles of 50 tablets.
The 125M strength also available
in bottles of 500.

*TRADEMARK, REG. U. S. PAT. OFF.

The Upjohn Company, Kalamazoo, Michigan





*Reach for the
Telephone, Doctor*

Just call RI 7-7519 and your prescriptions will be compounded exactly as you wish. Free delivery, too! Give us a ring!

**BROOKSIDE
DRUG STORE**

3348 South Peoria

**GLEN DRUG
STORE**

5300 Sand Springs Road

**PRESCRIPTION
DRUGGISTS**

*Registered Druggist
In Charge at All Times.
Complete Stock of
Dated Prescription Drugs*

*Telephone Your
Prescription*

DIAMOND 3-7651

BLOOD CENTER NEWS

**DISTRIBUTION & REPLACEMENT
REPORT**

December, 1956

Hospital:	Used: Bloods	Replace- ments:	% Repl.
St. John's	632	224	35.4%
Hillcrest	348	152	43.7%
Byrne	12	17	141.6%
Osteopathic	84	111	132.1%
Mercy	3
Tulsa Osteo.	10	13	130.6%
Broken Arrow ...	9	9	100.0%
Moton	1	0
Other Hospitals...	93	139	149.5%
Other Uses	165
Totals	1,354	670	49.5%

The Tulsa County Red Cross Blood Center collected a total of 14,507 units of whole blood in 1956, a study of Center statistics for the year indicates. This compares to 13,236 for the previous year of 1955.

The Center recorded a total of 16,260 donors for the year. Of this number there were 14,404 successful bleedings, 1,799 rejections (mostly for failure of donor to meet minimum medical requirements), and 57 unsuccessful bleedings. Another 103 units came from other sources.

In the recruitment of donors 8,364 came from organized donor programs of local firms and organizations. Another 6,972 were replacement donors, contributing blood to replace that given to family and friends. The balance of 924 came from the general recruitment program of the Center.

St. John's Hospital was the largest user of blood with 7,200 pints. Hillcrest Medical Center was second with 3,922, and Oklahoma Osteopathic Hospital third with 1,065 units. Smaller hospitals included Byrne, 193; Mercy, 68; Broken Arrow Hospital, 103; Moton, 87; and Tulsa Osteopathic, 102. Federal hospitals in the area, serviced under a donor arrangement with Tulsa veterans organizations, received 238 units. Correspondent and exchange hospitals took 475 units, while the new fractionation program of the Center utilized 583. A total of 483 pints were discarded.

Tetracycline...the outstanding broad-spectrum antibiotic, discovered and identified by Pfizer and made available as **TETRACYN**[®]
BRAND OF TETRACYCLINE

a wide selection of dosage forms for *oral, parenteral and topical use*...includes fruit-flavored, rapid-acting **TETRABON**[®]
BRAND OF TETRACYCLINE HOMOGENIZED MIXTURE

Unique fruit flavor in a ready-to-use liquid for oral administration. Therapeutic blood levels in one hour. Provides 125 mg. per 5 cc. teaspoonful.



PFIZER LABORATORIES, Division, Chas. Pfizer & Co., Inc., Brooklyn 6, N.Y.
World leader in antibiotic development and production

Since daily dosage is an important part of supplementation, GEVRAL is now packaged in a special JUBILEE JAR—an attractive container of 100 capsules for the family dining table. Specify GEVRAL. Your patients will remember to take their "vitamins" regularly when they have the JUBILEE JAR before them at mealtime.

GEVRAL is aptly formulated to meet the broad vitamin-mineral requirements of daily life. Balanced, comprehensive, GEVRAL provides 14 vitamins, 11 minerals and Purified Intrinsic Factor Concentrate. Dosage is only one *dry-filled* capsule daily.



An ideal family vitamin-mineral formula—



Each GEVRAL capsule contains:

Vitamin A	5000 U.S.P. Units
Vitamin D	500 U.S.P. Units
Vitamin B ₁₂	1 mcgm.
Thiamine Mononitrate (B ₁)	5 mg.
Riboflavin (B ₂)	5 mg.
Niacinamide	15 mg.
Folic Acid	1 mg.
Pyridoxine HCl (B ₆)	0.5 mg.
Ca Pantothenate	5 mg.
Choline Bitartrate	50 mg.
Inositol	50 mg.
Ascorbic Acid (C)	50 mg.
Vitamin E (as tocopheryl acetates)	10 I. U.
1-Lysine Monohydrochloride	25 mg.
Rutin	25 mg.
Purified Intrinsic Factor Concentrate	0.5 mg.
Iron (as FeSO ₄)	10 mg.
Iodine (as KI)	0.5 mg.
Calcium (as CaHPO ₄)	145 mg.
Phosphorus (as CaHPO ₄)	110 mg.
Boron (as Na ₂ B ₄ O ₇ ·10H ₂ O)	0.1 mg.
Copper (as CuO)	0.1 mg.
Fluorine (as CaF ₂)	1 mg.
Manganese (as MnO ₂)	1 mg.
Magnesium (as MgO)	1 mg.
Potassium (as K ₂ SO ₄)	5 mg.
Zinc (as ZnO)	0.5 mg.

GEVRAL*

VITAMIN-MINERAL SUPPLEMENT **LEDERLE**

LEDERLE LABORATORIES DIVISION, AMERICAN CYANAMID COMPANY, PEARL RIVER, N. Y.

*REG. U. S. PAT. OFF.



*Serving Tulsa Doctors
With the Finest in Quality Printing*

You will be delighted with our attractive and useful stationery, statement forms, case history records, prescription pads, appointment cards, and receipt books, all tailored to your specific office needs. Let us add your name to our growing list of satisfied doctors and dentists.

*for personalized service and attention
to your printing needs call CHerry 2-2450*

Commercial

PRINTING COMPANY
310 South Lansing

**UNIVERSITY OF OKLAHOMA
ANNOUNCES COMING EVENTS**

Five nationally known medical personalities will be guest speakers at the Third Annual Pathological, Radiological and Surgical Symposium sponsored by the University of Oklahoma School of Medicine on February 23-24, 1957, at Oklahoma City.

Scheduled to appear at the two-day postgraduate study event are:

Dr. Warren H. Cole, Chairman of the Department of Surgery, University of Illinois School of Medicine, and President, American College of Surgeons, Chicago, Illinois.

Dr. Robert S. Grinnell, Associate Professor of Surgery, Columbia University College of Physicians & Surgeons, New York, N.Y.

Dr. Philip J. Hodes, Professor of Radiology, University of Pennsylvania School of Medicine, Philadelphia, Pennsylvania.

Dr. Elson B. Helwig, Professor of Pathology, George Washington University School of Medicine, Washington, D. C.

Dr. J. Arnold Borgen, Chairman of the Department of Intestinal Diseases, The Mayo Clinic, Rochester, Minnesota.

Dr. R. Russell Best, Professor of Surgery, University of Nebraska College of Medicine, Omaha, Nebraska.

Dr. Edgar J. Poth, Professor of Surgery, University of Texas School of Medicine, Galveston, Texas.

The subject of the symposium will be "Lesions Of The Colon."

The Symposium is jointly sponsored by the Oklahoma Association of Radiologists, Oklahoma Association of Pathologists, and the Oklahoma Chapter of the American College of Surgeons.

The University of Oklahoma has also announced the following postgraduate courses for the spring months:

March 4-8. Advanced Electrocardiography.

March 7-8. Ophthalmology-Otolaryngology Symposium, sponsored by the Oklahoma City Society of Ophthalmologists and Otolaryngologists. Guest speak-

**EVERY WOMAN
WHO SUFFERS
IN THE
MENOPAUSE
DESERVES**

"PREMARIN"®

widely used

natural, oral

estrogen

AYERST LABORATORIES

New York, N. Y. • Montreal, Canada

5646

ers will include Dr. Harold G. Scheie, Assistant Professor of Ophthalmology, University of Pennsylvania School of Medicine, Philadelphia, Pennsylvania, and Dr. Henry L. Williams, Chairman of Section on Otolaryngology, The Mayo Clinic, Rochester, Minnesota.

March 15. Urology Symposium.

April 5-6, Trauma Symposium. Sponsored by the American College of Surgeons. Guest speaker, Dr. Daniel C. Riordan, Assistant Professor of Orthopedic Surgery, Tulane University School of Medicine, New Orleans, Louisiana.

May 31. Meeting of Oklahoma Association of House Staff Physicians.

The Medical School will continue with its Short Course series on the 2nd Tuesday of each month at 3:30 P.M.

SILAS MURRAY, M.D.

1881 - 1957

Dr. Silas Murray, 75, retired Tulsa obstetrician, died at his home on January 12, 1957, following an illness of several weeks. He had been in poor health for some time and had recently been hospitalized.

A native of Jacksboro, Tennessee, Dr. Murray was educated at Anderson Institute of Anderson, Tennessee. He received his medical degree in 1907 from the University of Tennessee School of Medicine. His internship was served at Patterson General Hospital of Patterson, New Jersey, and his obstetrical residency at Bellevue Hospital, New York, N.Y. He practiced at Nashville, Tennessee, for one year, and at Patterson, New Jersey. Dr. Murray entered practice in Tulsa in 1917. His retirement in 1952 followed the delivery of several thousand babies during the course of his professional career.

Prominent as a golfer, Dr. Murray was a former member of the Tulsa Kiwanis Club and Tulsa Country Club. Survivors include the widow and one daughter. Services were held January 15, 1957.

TIME CHANGED FOR POPULAR MEDICAL TELEVISION SHOW

"House Call," the current series of medical television programs sponsored by the Tulsa County Public Health and Heart Associations, is now seen each Saturday at the new time of 4:30 P.M. over Station KOTV, Channel Six. Dr. Russell C. Pigford, Chairman of the project, said the later hour should insure a wider viewing audience.

The program of February 2nd will be devoted to children's teeth, February 9th to heart failure, February 16th to heart surgery, and February 23rd to heart research. Tulsa doctors, dentists and scientists are featured on the program.

A special program in the series commemorating the 50th Anniversary of the Tulsa County Medical Society was presented on January 5th. Prepared under the direction of the Press, Radio and Television Committee of the Society, the telecast featured Dr. G. R. Russell, President of the Society; Dr. W. Albert Cook, first President of the Society in 1907; and Dr. James W. Kelley, Chairman of the Committee. Cy Tuma, popular KOTV news commentator, was Master of Ceremonies. The program featured motion picture film clips of Tulsa medical facilities and doctors at work, graphic charts picturing the growth of Tulsa Medicine, and a report of the local application of scientific medical progress. The script was written by Pete White, Tulsa advertising executive.

DR. WILKIE D. HOOVER has resigned as Councilor to the Oklahoma State Medical Association, but as Delegate to the American Medical Association will retain a seat on the Council. DR. WENDELL L. SMITH was elevated from Vice-Councilor to Councilor, and DR. MARSHALL O. HART has been appointed as Vice-Councilor.

DR. CURTIS N. CLIFTON has taken new quarters at 1424 North Harvard, Tulsa, for general practice.

DR. M. C. ETHERTON has announced his retirement from active practice and will move to Monett, Missouri.

Now there are two forms of

THERAGRAN

NEW:

THERAGRAN LIQUID

Squibb Therapeutic Formula Vitamin Liquid

1 teaspoonful of Theragran
Liquid is equivalent to

1 Theragran Capsule.

For patients of all ages who
prefer liquid vitamin therapy.

THERAGRAN CAPSULES

Squibb Therapeutic Formula Vitamin Capsules

The six vitamins almost
invariably associated
with chronic vitamin
deficiency states.

Each Theragran Capsule, or 5 cc. teaspoonful of Theragran Liquid, supplies:

Vitamin A (synthetic)	25,000 U.S.P. Units
Vitamin D	1,000 U.S.P. Units
Thiamine	10 mg.
Riboflavin	10 mg.
Niacinamide	150 mg.
Ascorbic acid	150 mg.

Usual Dosage: 1 or 2 capsules or teaspoonfuls daily. Infants: Not
more than 1 teaspoonful daily.

THERAGRAN CAPSULES: bottles of 30, 60, 100 and 1000.

THERAGRAN LIQUID: bottles of 4 ounces.

SQUIBB



Squibb Quality—the Priceless Ingredient

THERAGRAN IS A SQUIBB TRADEMARK

INSURANCE*Professional
Liability**Complete Estate
Planning Service*

R. S. Henderson H. B. Long
F. S. Schneider Don J. Grant
Jack W. Nelson

ALEXANDER & ALEXANDER
INCORPORATED

Enterprise Building Telephone
Utica Square Bank Building LU 4-1301

**UTICA SQUARE
PHARMACY****Dial****Riverside 2-2434***Prompt***FREE DELIVERY****CHARGE ACCOUNTS
INVITED****HILLCREST HOSPITAL BUYS
26-UNIT APARTMENT HOUSE**

Hillcrest Medical Center last month announced the purchase of a 26-unit apartment building to house interns, residents and their families at a cost of \$210,000.

At the same time the Center revealed plans for a 12-story psychiatric hospital to cost \$2,500,000. Tentative plans call for its construction on Troost Avenue across from the present Nurses Residence. It would join on the west the new six story wing to be built in 1957.

Purchase of the Hillcrest Apartment Court at 12th and Wheeler streets was financed by miscellaneous public and private donations, Mr. Bryce Twitty, Administrator, said. Present tenants will be permitted to remain for several months, after which time the building will be used exclusively for an estimated thirty interns and residents and their families.

The Center now maintains seven homes for interns and residents on Utica Place between 11th and 12th streets. These will be torn down after the transfer to the new apartment and the space used for a parking area.

The proposed psychiatric hospital is designed as a long range project and will depend upon sufficient funds being made available from private donors, Mr. Twitty reported. The recently completed psychiatric clinic building, made possible by a grant of \$35,000 from a Tulsa oil man, will be used for other purposes and the clinic moved into the psychiatric hospital quarters.

DR. LUCIEN M. PASCUCCI was guest speaker for the Sand Springs Rotary Club on January 4, 1957. He discussed "New Uses Of Radioactive Isotopes In Medicine."

DR. BERNARD E. GUENTHER will report to Fort Sam Houston, Texas, in early February for a tour of duty with the Army Medical Corps.

Speakers for the Central High School Pre-Med Club in January included DR. AVERILL STOWELL, DR. JACK L. RICHARDSON, and DR. CRAIG S. JONES.

In the arthritides... a prudent course



Ulysses and the Sirens—from a vase in the British Museum

*between the hazards of high steroid dosage
and the frustration of inadequate relief*

Because of the complementary action of cortisone and the salicylates, Salcort produces a greater therapeutic response with lower dosage.

One study concludes: "Salicylate potentiates the greatly reduced amount of cortisone present so that its full effect is brought out without evoking undesirable side reactions."¹

SALCORT[®]*

indications:

Rheumatoid arthritis . . . Rheumatoid spondylitis . . . Rheumatic fever . . . Neuromuscular affections.

¹Busse, E.A.: Treatment of Rheumatoid Arthritis by a Combination of Cortisone and Salicylates. *Clinical Med.* 11:1105.

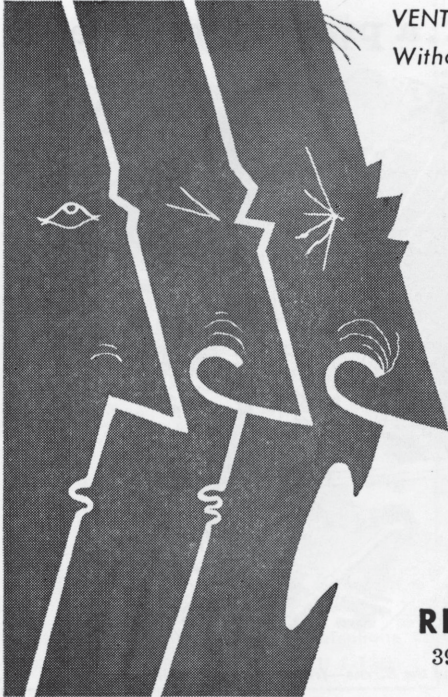
each tablet contains:

Cortisone acetate	2.5 mg.
Sodium salicylate	0.3 Gm.
Aluminum hydroxide gel, dried	0.12 Gm.
Calcium ascorbate	60.0 mg.
(equivalent to 50 mg. ascorbic acid)	
Calcium carbonate	60.0 mg.

*U.S. Pat. 2,691,662

The S. E. MASSENGILL Company, Bristol, Tennessee

NEW YORK • KANSAS CITY • SAN FRANCISCO



VENTILATION AND DRAINAGE
Without Irritation of the Ciliated Epithelium

RHINALL

nose drops

Safe for children and adults
No burning or irritation
No bad taste or after-reactions
No risk of sensitization

Contains:
Phenylephrine Hydrochloride 0.15 %
"Propadrine" Hydrochloride 0.3 %
in an isotonic saline menstruum

For convenience, also
available in 1/2 ounce plastic
spray bottle



RHINOPTO COMPANY

3905 Cedar Springs • Dallas, Texas

Ethical Specialties for the Profession

*Hospitality Is An Art
Coke Makes It So Easy*



DRINK

Coca-Cola

REG. U.S. PAT. OFF.

ST. JOHN'S SETS RECORD

St. John's Hospital served a record total of 51,000 patients during 1956, a report by Assistant Administrator Ken Wallace indicates.

A breakdown of the figures shows 13,860 clinic patients, 9,300 emergency cases, 4,185 births, and 24,350 admitted patients who spent an average of 6.2 days in the Hospital. The figures represent the highest in the history of St. John's.

PLANNING PROGRAM

(Continued From Page 8)

programs. "Most such societies have found its members prefer the highly specialized topics of a special section," he said. "The trend is for programs on topics of medical economics and business matters, more frequently on a quarterly rather than a monthly basis."

Some of the topics discussed at such meetings include estate planning, activities in other scientific fields, national legislation, medical office management, medical public relations, income tax problems, etc.

To meet the need for scientific education, specialty sections organized within the Society would meet separately for programs on their specialty topics. All doctors would be invited.

DR. BETTY CONRAD, Medical Director of the Tulsa County Red Cross Blood Center, attended a Blood Center Staff Conference in St. Louis, Missouri, January 16-20, 1957. The meeting was called by the Midwestern Division of the American Red Cross.

An oil painting by DR. W. CARL LINDSTROM is being circulated as part of a travelling exhibition by the American Federation of Arts. The painting, entitled "Pompeii", is part of a collection of outstanding works by amateur artists and will tour major cities.

DR. A. B. CARNEY has been renamed as Chairman of the Public Health Committee of the Tulsa Chamber of Commerce for 1957.

DR. EARL M. LUSK has been on the sick list with an injured ankle.

**Building
For
Tulsa's
Future —**

your guarantee
of the finest in
hospital care

**ST. JOHN'S
HOSPITAL**

**1923 SOUTH UTICA
Phone RI 2-3361**

**There Is Only
ONE**

BALL DRUG

STORE

Serving

EAST TULSA

With Prompt Service

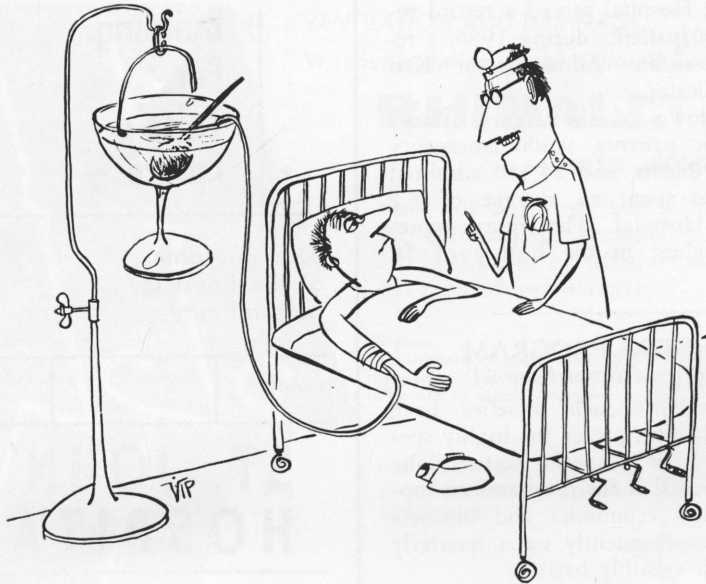
Since 1920

Telephone MA 6-2156

College At Admiral

DICK KELLO

Owner



"WE'LL HAVE YOU UP AND AROUND IN JIG TIME."

For your enjoyment—Courtesy of Boyle and Company

HARVARD DRUG STORE

B. C. SHINN, Owner

Phone MADison 6-2186

*The
Suburban
Prescription
Store*

FREE
PRESCRIPTION
DELIVERY
3244 E. 11th St.
Tulsa

Speakers for the Will Rogers High School Medical Club in January, 1957, included DR. EMIL E. PALIK and DR. SUMNER YALE ANDELMAN.

DR. MAURICE J. SEARLE spent the Christmas holidays visiting his daughter at Honolulu, Hawaii.

DR. VANCE LUCAS has been vacationing in New Orleans, Louisiana.

DR. A. RAY WILEY is recovering from surgery performed at the Mayo Clinic, Rochester, Minnesota.

DR. J. E. BROOKSHIRE has completed fifty years in the practice of medicine and will be honored with the presentation of a 50-Year Club Pin of the Oklahoma State Medical Association. The ceremonies will take place at the February 11th meeting of the Tulsa County Medical Society.

DR. JOHN C. KRAMER was speaker for the Parent-Teachers Association of Union County School on January 28th, discussing rheumatic heart disease. DR. LEONARD L. KISHNER spoke on the same subject before the Celia Clinton PTA on January 8th.

**BYRNE
MEMORIAL HOSPITAL**

**1321 South Peoria
Telephone CH 2-4114**

●
FORTY-ONE BEDS
COMPLETELY AIR CONDITIONED
MODERN OPERATING ROOM
REGISTERED NURSES
ATTRACTIVE NURSERY

●
Bessie L. Byrne, Owner

North and West
13TH AND MAIN
Telephone GI 7-3103

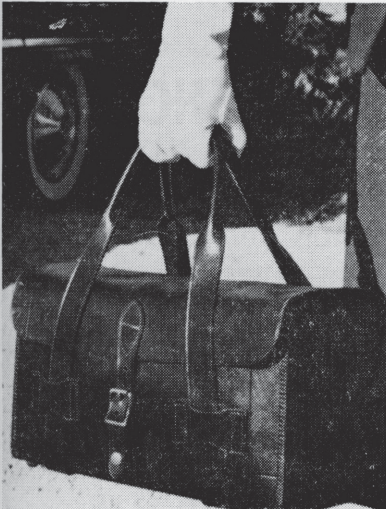
SCOTT ROBISON'S

Service

**PRESCRIPTION
STORES**

15TH AND LEWIS
Telephone WE 9-6393

South and East



The Helping Hand
of the
Public Health Nurse
Benefits Your Patients,
Doctor

You give the orders . . .

They visit the home . . .

The maximum fee is \$3.00

Call LU 4-4238

TULSA COUNTY PUBLIC HEALTH ASSOCIATION

808 South Peoria



The Emblem Of Approval

Owned and operated by the Tulsa County Medical Society, the Medical Credit Bureau offers an efficient reliable collection service at cost. More than 135 Tulsa doctors and dentists attest to its discreet collection abilities.

MEDICAL CREDIT BUREAU

Official Collection Agency of The Tulsa County Medical Society

B-9 Medical Arts Building

Telephone DI 3-6331

PROFESSIONAL DRUG SHOP

Where Prescription Perfection
Comes First

TELEPHONE Riverside 7-1384

2110 South Utica

D. L. KINCAID
(Kinney)

RAYMOND EWERS

TULSA MEDICAL SERVICE ASSOCIATION

Membership Roster, Tulsa Chapter

<i>Name:</i>	<i>Representing:</i>	<i>Telephone:</i>
Ed L. Allred	Maltbie Laboratories	GI 7-7991
Bob Amos	Wyeth	RI 3-1938
Jim Baughman	Schenley Laboratories	WE 9-9165
G. Richard Brown	Mead Johnson & Company	TE 5-6839
J. P. Crawford	Armour Laboratories	MA 6-3481
Joe F. Chappell	Kremers-Urban	MA 6-5363
George M. Clulow	Sandoz Pharmaceuticals	GI 7-5684
C. R. Doran	Lakeside Laboratories	Claremore 1083
James L. Edwards	Warner-Chilcott Co.	WE 9-8962
Wayne Garrison	Ciba	TE 5-0070
R. C. Gooch	Abbott Laboratories	WE 9-4389
Fred Harris	Wyeth	RI 2-5835
Lou Hayes	Massengill Company	HI 6-0957
Paul Heaston	Merck, Sharp & Dohme	RI 2-8447
Gene Jones	U. S. Vitamin Corp.	TE 5-0900
R. C. Keller	McNeil Laboratories	RI 2-7640
C. M. (Mike) Kelly	National Drug Co.	WE 9-9311
A. L. Kessler	Pitman-Moore Co.	LU 4-7951
Donald E. Laird	Ciba	TE-5-1152
Dorwin Lamkin	Upjohn	RI 7-1668
R. E. Loftus	Warren-Teed	RI 7-1717
A. L. Mallory	Warren-Teed	MA 6-9229
Mark Mathes	Cutter Laboratories	TE 5-2963
R. T. (Bob) Mauch	Burroughs-Wellcome	RI 7-4347
Bob Meanor	E. R. Squibb Co.	WE 9-9313
Ralph L. Miller	Hoffman-LaRoche	RI 7-1878
E. Dick Millwee	E. R. Squibb Co.	RI 2-5668
Glen E. Mitchell	Smith, Kline & French	TE 5-2007
Dan E. Payne	William S. Merrell	TE 5-0583
Dave Prater	Winthrop Laboratories	TE 5-2735
A. M. Sayles	E. R. Squibb & Co.	RI 2-1646
Tom Sellers	G. D. Searle	WE 9-7361
Kenneth Shaw	George A. Breon Co.	CH 2-1566
E. E. Sisney	Eaton Laboratories	RI 2-5347
Bill Terral	Merck, Sharp & Dohme	TE 5-7008
Cecil Tredway	Wyeth Laboratories	WE 9-0075
Bill Walker	Parke-Davis	WE 9-8015
Preston Walker	Upjohn	RI 7-6464
Jack Wood	Winthrop Laboratories	RI 2-8218

Professional Directory

S. Y. ANDELMAN, M.D.
Diagnosis & Treatment of
Arthritis & Rheumatic Diseases
320 Utica Square Medical Center
Ph. RI 7-0173

DONALD L. BRAWNER, M.D.
General Surgery
406 Medical Arts Bldg., Ph. LU 7-2022

WILLIAM M. BENZING, JR., M.D.
Diplomate American Board of Radiology
302 Medical Arts Bldg. Ph. DI 3-3044

MANUEL BROWN, M. D.
Allergic Diseases
1619 E. 15th St. Ph. LU 4-5552

BERGET H. BLOCKSOM, M. D.
MAXWELL A. JOHNSON, M. D.
Urologists
Diplomates, American Board of Urology
517 Medical Arts Bldg., Ph. LU 4-1888

EMIL M. CHILDERS, M.D.
General Surgery
302 Utica Square Medical Center
Ph. RI 2-8854

Professional Directory

SAFETY R. FIRST, M.D., F.A.C.C.
 Cardiology & Electrocardiology
 1011 Medical Arts Bldg. Ph. LU 4-7545

DORWIN E. HAWTHORNE, D.D.S.
 Oral Surgery
 304 Utica Square Medical Center
 Ph. RI 2-5579

SAMUEL E. FRANKLIN, M. D.
 General Surgery
 1619 E. 15th St. Ph. LU 3-2108

JAMES W. KELLEY, M.D., F.A.C.S.
 Plastic and Reconstructive Surgery
 Diplomate, American Board
 Of Plastic Surgery
 204 Utica Square Medical Center

JED E. GOLDBERG, M.D.
 Obstetrics and Gynecology
 Culdoscopy
 212 Utica Square Medical Center
 Ph. RI 2-8662

WALTER S. LARRABEE, M.D.
LEON H. STUART, M.D.
 X-Ray Diagnosis & Therapy
 Radium Therapy
 411 Medical Arts Bldg. Ph. GI 7-3111

JOHN F. GRAY, JR., M.D.
 Neuropsychiatry
 208 Utica Square Medical Center
 Ph. RI 2-6016

MARTIN LEIBOVITZ, M.D.
 Thoracic and Cardiovascular Surgery
 Certified American Board of Surgery
 and Board of Thoracic Surgery
 812 Medical Arts Bldg. Ph. DI 3-8722

WILLIAM T. HOLLAND, M.D.
 Neuropsychiatry
 3102 South Harvard Suite 74
 Ph. RI 2-8856

C. S. LEWIS, JR., M.D.
 Internal Medicine
 501 Medical Arts Bldg. Ph. LU 4-2778

SPRINGER CLINIC

Sixth and Cincinnati

Tulsa

Telephone LU 7-6621

Medicine

D. O. Smith, M.D.
 E. G. Hyatt, M.D.
 H. A. Ruprecht, M.D.
 Vincel Sundgren, M.D.
 Dean C. Walker, M.D.
 Thomas H. Fair, M.D.
 V. William Wood, M.D.

Neurology and Psychiatry

Tom R. Turner, M.D.
 Joe E. Tyler, M.D.

Clinical Psychology

William W. Saunders, Ph.D.

Pediatrics

G. R. Russell, M.D.
 Robert K. Endres, M.D.

General Surgery

Carl J. Hotz, M.D.
 William C. Pratt, M.D.

Obstetrics and Gynecology

Paul A. Bischoff, M.D.

Urology

K. F. Swanson, M.D.
 William F. Boyer, M.D.

**Ear, Nose and Throat
 and Plastic Surgery**

Donald L. Mishler, M.D.

Orthopedic Surgery

Charles E. Brighton, M.D.

Ophthalmology

Thomas L. Ozment, M.D.

Anesthesia

M. R. Steel, M.D.

Professional Directory

VANCE LUCAS, M. D.
 Thoracic and General Surgery
 Diplomate, American Board of Surgery
 and Board of Thoracic Surgery
 Medical Arts Bldg. Ph. LU 3-5513

HOUSTON F. MOUNT, M.D.
JAMES T. MADDOX, M. D.
 Obstetrics and Gynecology
 Ranch Acres Medical Center
 Ph. RI 2-0711

JAMES D. MARKLAND, M.D.
 Allergy
 411 Medical Arts Bldg., Ph. GI 7-3111

JAMES H. NEAL, JR., M.D.
 Surgery
 Diplomate, American Board of Surgery
 916 Medical Arts Building
 Telephone LU 4-0196

JOHN G. MATT, M.D.
 Diseases of the Rectum,
 Colon and Anus
 1106 Medical Arts Building
 Ph. CH 2-1014

MARQUE O. NELSON, M. D.
 Dermatology
 X-Ray Epilation
 For Persistent
 Ringworm Of The Scalp
 510 Medical Arts Bldg. Ph. GI 7-3532

RALPH A. MCGILL, M.D., F.A.C.S.
 Surgery-Radium
 210 Utica Square Medical Center
 Ph. RI 2-2405

EDWARD L. MOORE, M.D., F.A.C.S.
BYRON W. STEELE, JR., M.D.
 Surgery
 Diplomates, American Board of Surgery
 325 Utica Square Medical Center

IRON H. NELSON, M.D.
 Clinical and Surgical Pathology
 1107 Medical Arts Building
 316 Utica Square Medical Center



TULSA CLINIC

915 South Cincinnati

Surgery
 Andre B. Carney, M.D.,
 F.I.C.S., F.A.C.S.

COMPLETE
 CLINIC
 FACILITIES

Medicine
 H. W. Ford, M.D.
 Thomas W. Taylor, M.D.
 Beryl D. Henwood, M.D.

Telephone GI 7-0177

Cardiology and
 Internal Medicine
 James C. Peters, M.D.

Miss Bettye Adams
 Director

Neurology and
 Internal Medicine
 O. L. Hill, M.D.

X-Ray and
 Gastro-enterology
 Earl M. Lusk, M.D.

Internal Medicine
 Craig S. Jones, M.D.

Dentist
 J. Thurman Gamble, D.D.S.

Professional Directory

<p style="text-align: center;">L. C. NORTHRUP, M.D., F.I.C.S. Gynecology & Obstetrics 1307 S. Main Ph. DI 3-0151</p>	<p style="text-align: center;">WADE SISLER, M.D. Orthopedic Surgery 8th and Elgin Ph. LU 4-4123</p>
<p style="text-align: center;">THE ORTHOPEDIC CLINIC Suite 203, Utica Square Medical Center Practice Limited To Bone & Joint Surgery JOHN E. McDONALD, M.D. FRANK A. STUART, M.D. JOHN C. DAGUE, M.D.</p>	<p style="text-align: center;">WILLIAM ORLANDO SMITH, M.D. Master Medical Science, University of Pennsylvania; Fellow, Cleveland Clinic; Diplomate, American Board of Otolaryng- ology. Ophthalmology & Otolaryngology. 327 Utica Sq. Med. Ct. Ph. RI 2-2443</p>
<p style="text-align: center;">WILLIAM J. OSHER, M. D. Internal Medicine 608 Medical Arts Bldg., Ph. GI 7-9025</p>	<p style="text-align: center;">ROBERT W. SPENCER, M.D. Ophthalmology 312 Medical Arts Building Ph. LU 3-2019</p>
<p style="text-align: center;">SIMON POLLACK, M.D., D.A.B.R. C. H. ROSENBERG, M.D., D.A.B.R. Diagnostic and Therapeutic Radiology Suite 103, Utica Square Medical Center Ph. RI 2-4955</p>	<p style="text-align: center;">CHARLES G. STUARD, M.D. Ophthalmology 217 Utica Square Medical Center Ph. RI 7-0289</p>
<p style="text-align: center;">HERSCHEL J. RUBIN, M.D. Diplomate, American Board of Pediatrics Diseases of Infants & Children 1916 South Utica Tulsa</p>	<p style="text-align: center;">ARTHUR I. TAUBMAN, D.D.S., M.S.D. Oral Surgery & Exodontia 1111 Medical Arts Bldg. Tulsa, Okla. Office DI 3-6312 Emergency LU 4-7212</p>
<p style="text-align: center;">WM. B. SCIMECA, M.D., M.S. (In Surgery) General Surgery Ranch Acres Medical Center Ph. RI 2-7242</p>	<p style="text-align: center;">C. THOMAS THOMPSON, M.D. General Surgery Diplomate, American Board of Surgery Ranch Acres Medical Center Ph. RI 2-8838</p>
<p style="text-align: center;">J. D. SHIPP, M.D. Surgery and Diseases of the Colon and Rectum 708 Medical Arts Bldg. Tulsa</p>	<p style="text-align: center;">TURNBOW & RAY CLINIC Surgery - Diagnostic and Therapeutic Blocks 3015 E. 15th Street Ph. WE 9-6397</p>
<p style="text-align: center;">PAUL O. SHACKELFORD, M. D. Diplomate, American Board of Dermatology Diseases & Malignancies of the Skin X-Ray Radium Thorium-X 615 Medical Arts Bldg. Ph. CH 2-4872</p>	<p style="text-align: center;">ARNOLD H. UNGERMAN, M.D. MILFORD S. UNGERMAN, M.D. Diagnosis & Treatment of Nervous and Mental Diseases 404 Medical Arts Bldg., Ph. CH 2-3151</p>
<p style="text-align: center;">W. A. SHOWMAN, M.D. Dermatology 408 Medical Arts Bldg., Ph. DI 3-7789</p>	<p style="text-align: center;">R. M. WADSWORTH, M.D. Pediatrics 1445 S. Quaker Ph. DI 3-4300</p>

Did You Know That . . .

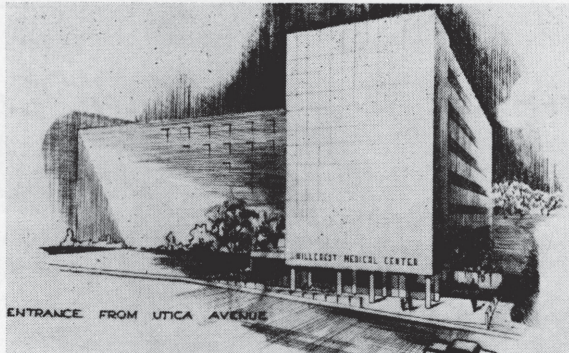
MILK DOES MORE
FOR THE REDUCER
THAN ANY OTHER SINGLE FOOD?

DAIRY COUNCIL OF TULSA

Affiliated With National Dairy Council

Telephone GI 7-8280

312 Wright Building



Architect's Drawing Of Our New 210-Bed Addition

Keeping Pace With Oklahoma Hospital Progress

HILLCREST MEDICAL CENTER

A Finer Institution in Oklahoma Medicine

1653 EAST 12TH STREET

TULSA, OKLAHOMA

Tulsa County Medical Society
B-9 Medical Arts Building
Tulsa 19, Oklahoma

BULK RATE

U. S. POSTAGE

PAID

TULSA 19, OKLA.

PERMIT No. 13

(Return Postage Guaranteed)

Curtain's

PRESCRIPTION LABORATORIES

Serving Doctors With

The Finest In Dependable Prescription Service

SIXTH AND BOULDER

TELEPHONE GI 7-7116

Oklahoma's Finest One-Stop Service

Physicians and Hospital Equipment and Supplies

X-Ray Apparatus and Accessories

Fully Modernized Facilities

**MID-CONTINENT
SURGICAL SUPPLY CO.**

Telephone CHerry 2-8169

1330 SOUTH BOSTON

TULSA

MERKEL X-RAY CO.

Telephone CHerry 2-4897

1330 SOUTH BOSTON

TULSA

OKLAHOMA CITY — 21 BROADWAY CIRCLE