

RESOURCE DESCRIPTION for the DIGITAL AGE

An Introduction to Metadata

MADISON CHARTIER

Metadata Librarian, Oklahoma State University
Professor Takacs' Digital Humanities

11 March 2021

Outline

I. What is metadata?

- A. What has always been there
- B. History of balance
- C. Built on language constructs

II. Why is metadata important?

- A. Resource discoverability
- B. Systems interoperability
- C. Resource management

III. What will guide & influence your metadata?

- A. Available systems
- B. Established schema
- C. Metadata application profiles

IV. Project: Tulsa Race Massacre of 1921

V. Summary

WHAT IS METADATA?

What Has Always Been There
History of Balance
Built on Language Constructs



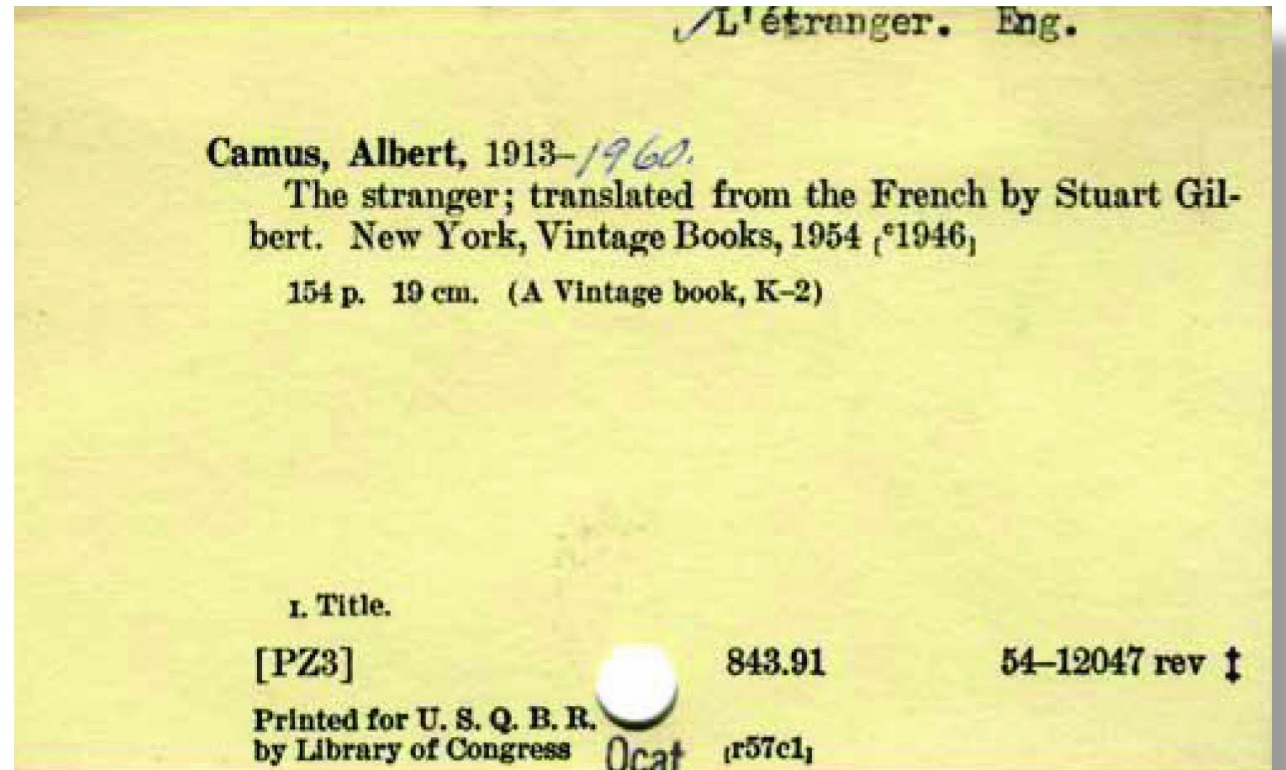
What Has Always Been There

Bibliographic resource description

- We know:
 - what these values are
 - how they're formatted
 - how they're organized
- But computers don't!

Metadata = “Data about data” for:

- user access
- records management



1

Metadata is bibliographic description for the digital age!

History of Balance

MARC

```
100 1_ |a Niemyer, Elizabeth Schnebly, |d 1925-
245 14 |a The reign of the horse : |b the horse in print, 1500-1715 : an exhibition /
260 __ |a Washington, D.C. : |b Folger Library Publications, |c c1991.
300 __ |a 64 p. : |b ill. ; |c 22 x 28 cm.
500 __ |a Catalog of an exhibition on display Oct. 3, 1991-Jan. 25, 1992.
504 __ |a Includes bibliographical references (p. 62-64).
650 _0 |a Horses |v Bibliography |v Exhibitions.
610 20 |a Folger Shakespeare Library |v Exhibitions.
655 _7 |a Exhibition catalogs. |2 rbgenr
700 1_ |a Scola, Susan.
700 1_ |a Dent, Anthony Austen.
710 2_ |a Folger Shakespeare Library.
```

2

Non-MARC

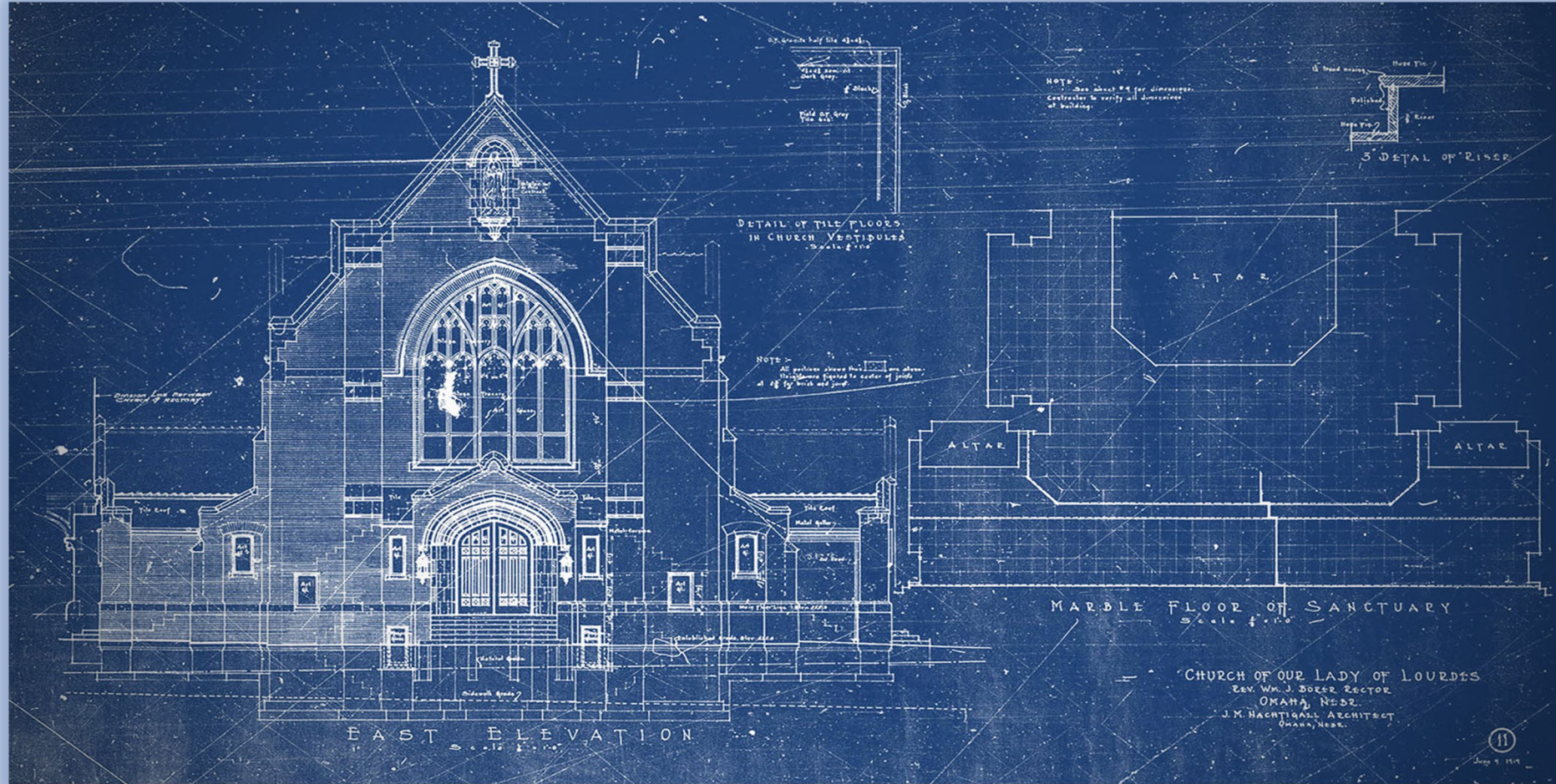
```
<?xml version="1.0" encoding="utf-8"?>
<rdf:RDF xmlns:rdf="http://www.w3.org/1999/02/22-rdf-syntax-ns#"
xmlns:dc="http://purl.org/dc/elements/1.1/">
  <rdf:Description>
    <dc:title>Homage to Catalonia,</dc:title>
    <dc:creator>Orwell, George, 1903-1950.</dc:creator>
    <dc:type>text</dc:type>
    <dc:publisher>London, Secker and Warburg</dc:publisher>
    <dc:date>[1938]</dc:date>
    <dc:language>eng</dc:language>
  </rdf:Description>
</rdf:RDF>
```

3

Balance machine functionality & human compatibility.

5

Built on Language Constructs



4

Clear, consistent language = successful navigation & discovery

WHY DO WE NEED METADATA?

Resource Discoverability
Systems Interoperability
Resource Management

Resource Discoverability

What details enable user access?

Resource Specifics

What is the **title** of the resource?

Who created the resource?

When was the resource **created**?

What is the **genre/material** of the resource?

User Interests

What is the resource **about**?

Why was the resource **created**?

Why is the resource **important**?

What other materials are related?

What schemas/vocabularies best capture this description?

More description = more access = greater discoverability

Systems Interoperability

Goals:

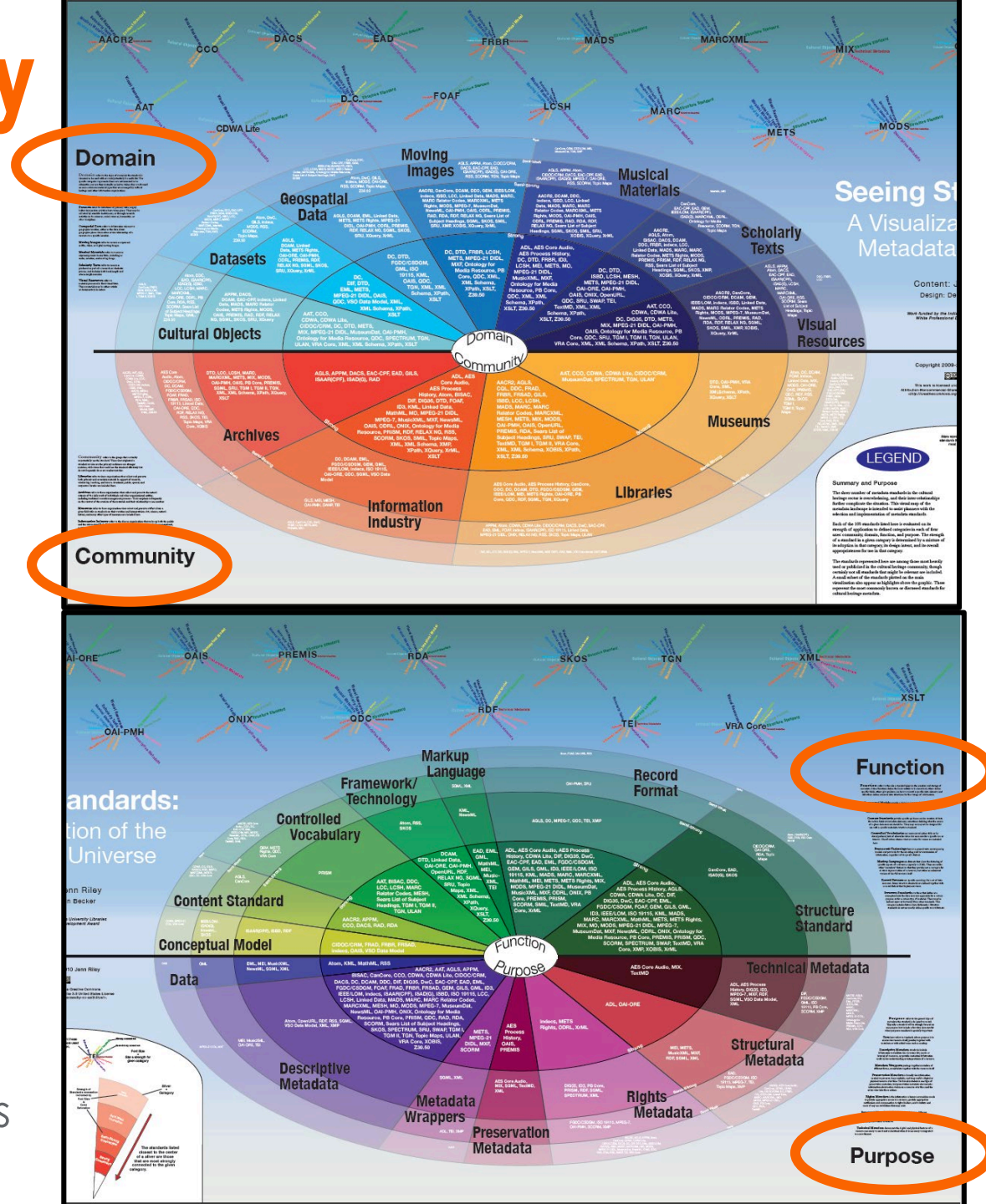
- Comprehensible, exchangeable metadata
- Universal language

Method & Means:

- Content description standards
- Open metadata standards
- Controlled vocab. & authority files

Riley, J. (2010.) Seeing Standards: A Visualization of the Metadata Universe. Indiana University Libraries. <http://jennriley.com/metadatamap/>.

Licensed under [CC BY-NC-SA 3.0 US](https://creativecommons.org/licenses/by-nc-sa/3.0/us/). Image is marked and halved for presentation display.



Resource Management

Repositories & Management Systems = SAFE ENVIRONMENTS for METADATA DEVELOPMENT

Improve management efficiency

- Establish metadata schema, rules, & parameters
- Define practices for consistency

Develop & apply tools for analysis

- Target metadata fields & values
- Track resource usage
- Identify user interests

Expand function of metadata

- Descriptive
- Technical
- Administrative

Good metadata improves digital management practices.

WHAT WILL GUIDE & INFLUENCE YOUR METADATA?

Available Systems
Established Schema
Metadata Application Profiles

Available Systems

CONTENTdm →
OSU Digital Collections

OSU DIGITAL COLLECTIONS OKSTATE LIBRARY
Oklahoma State University Collections

Home Browse Library Log in

Welcome to the Oklahoma State University Library Digital Collections

Digital collections at the Edmon Low Library are a collaborative project-based effort between Archives, Government Documents, Oral History, Maps & Spatial Data Services, and Digital Library Services. Collections include photography, maps, audio, and video files related to Oklahoma State University along with a diverse range of topics that are intertwined with the rich history of Oklahoma.

If you have additional information about any of these collections, please contact OSU Archives at [405-744-6311](tel:405-744-6311).

Collections 1-10 of 74

- AgEcon Papers
- Agricultural Cooperative Extension
- Architecture Reports
- The "Big Top" Show Goes On Oral History Project

Omeka S →
Your Online Exhibits

OKState Library Omeka S

SIGNED IN AS Madison Chartier Logout

Search items

Items

1 of 11 1-25 of 275 Advanced search Created Descending Sort

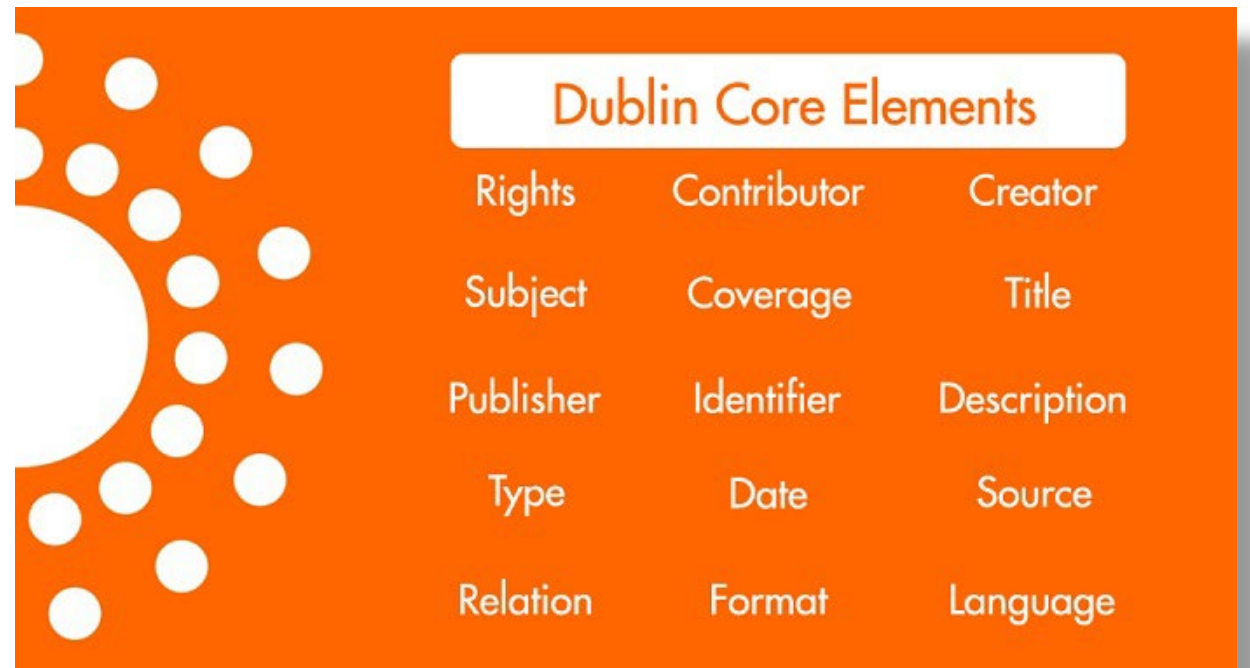
Title	Class	Owner	Created
Greenwood Community on fire	Image	Omeka Site Administrator	Feb 5, 2021
Slain black male	Image	Omeka Site Administrator	Feb 5, 2021
Christ Temple Church burning	Image	Omeka Site Administrator	Feb 5, 2021
Jim Sherry's rent house	Image	Omeka Site Administrator	Feb 5, 2021
Internment at Convention Hall	Image	Omeka Site Administrator	Feb 5, 2021
Internment at Convention Hall	Image	Omeka Site Administrator	Feb 5, 2021
Burning grocery store	Image	Omeka Site Administrator	Feb 5, 2021

Friendly systems that permit freedom & flexibility...

Established Schema

... *DUBLIN CORE (DC)* ...

- “Founding Father” of metadata schemas!
- Offers basic bibliographic description
- **WIDELY USED!**
- *Qualified Dublin Core* offers greater specificity when needed

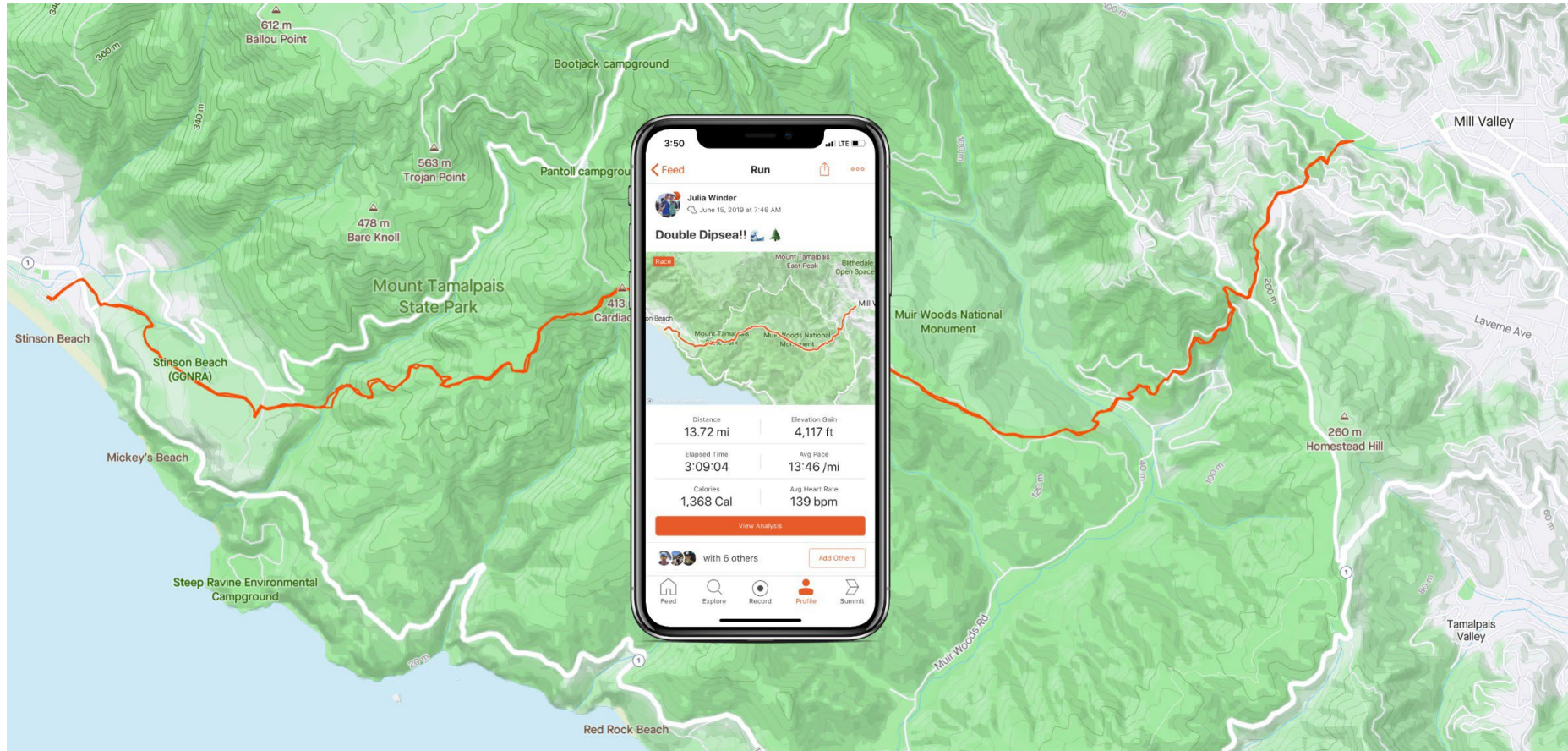


Dublin Core Elements		
Rights	Contributor	Creator
Subject	Coverage	Title
Publisher	Identifier	Description
Type	Date	Source
Relation	Format	Language

7

Everyone knows Dublin Core.

Metadata Application Profiles (MAPs)



Every collection needs a MAP to guide its metadata creation.

PROJECT

Tulsa Race Massacre of 1921

Summary

Metadata makes a HUGE impact!

Enables resource discoverability

- Open metadata standards
- Controlled vocabulary
- Descriptive standards

Broadens user access via interoperability

- Your institution and beyond!
- Digital access = universal access

Improves resource management

- Consistent values = better collection assessment
- Self-evaluation = continued development

Metadata drives modern information exchange!

Madison Chartier

Digital Resources & Discovery Services, Edmon Low Library

E | madison.chartier@okstate.edu
215A Edmon Low Library

<https://info.library.okstate.edu/c.php?g=916329>

THANK YOU!



Images

1. Chronical Books (2013, Oct.) Card Catalog: 30 Notecards from the Library of Congress. *Amazon*. 1 Aug. 2019. Retrieved from: <https://www.amazon.in/Card-Catalog-Notecards-Library-Congress/dp/1452114323>.
2. *Folgerpedia* (19 March 2019). Interpreting MARC records. *Folgerpedia*. 19 Feb. 2020. Retrieved from: https://folgerpedia.folger.edu/Interpreting_MARC_records.
3. Wikimedia Commons (n.d.) File:Dublin core.jpg. *Wikimedia Commons*. 4 Aug. 2019. Retrieved from: https://commons.wikimedia.org/wiki/File:Dublin_core.jpg.
4. Hightower, B. (2016.) Just Don't Call Them Blueprints. *HiWorks*. 12 Nov. 2019. Retrieved from: <https://www.hi.works/blog/2016/2/15/just-dont-call-them-blueprints>.
5. Mapbox. (30 Oct. 2019). Strava launches gorgeous new outdoor maps: Maps designed by athletes, for athletes [Blog post]. Points of Interest. 19 Feb. 2020. Retrieved from: <https://blog.mapbox.com/strava-launches-gorgeous-new-outdoor-maps-977c74cf37f9>.
6. SERP GO. (6 March 2019). Dublin Core Metadata Element Set and Schema [Blog post]. 19 Feb. 2020. Retrieved from: <https://www.serpgo.com/dublin-core-metadata-element-set-and-schema/>.

