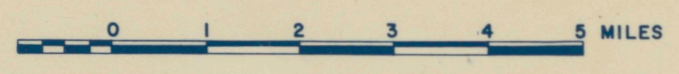


MAP SHOWING DISTRIBUTION  
OF SOME  
PRE-CHEROKEE UNITS

CANADIAN COUNTY, OKLAHOMA

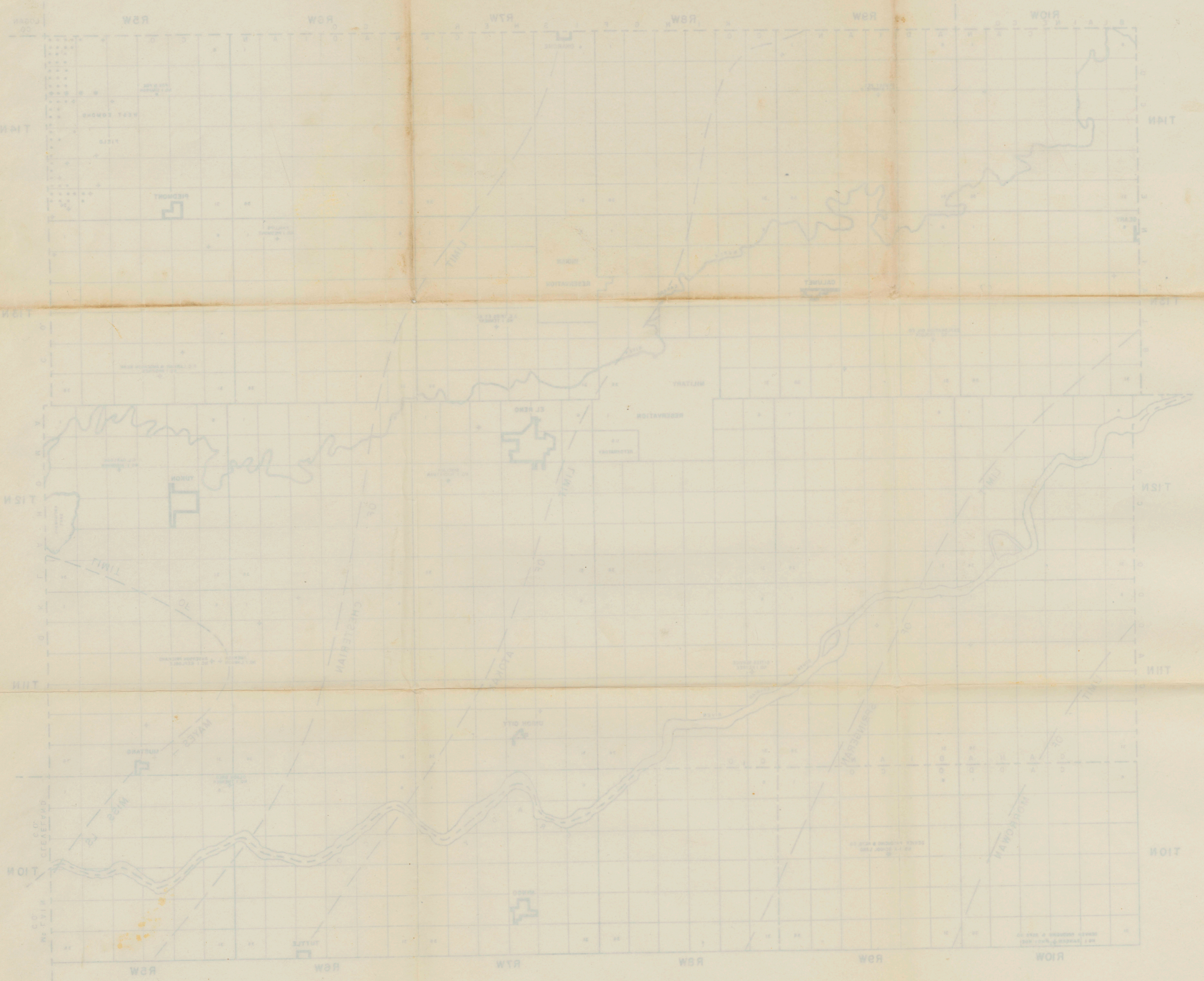
SCALE



Z. G. KIMBERLIN JR. 1953

FIGURE IX





MAP SHOWING DISTRIBUTION

OF SOME

PRE-CHEROKEE UNITS

CANADIAN COUNTY, OKLAHOMA

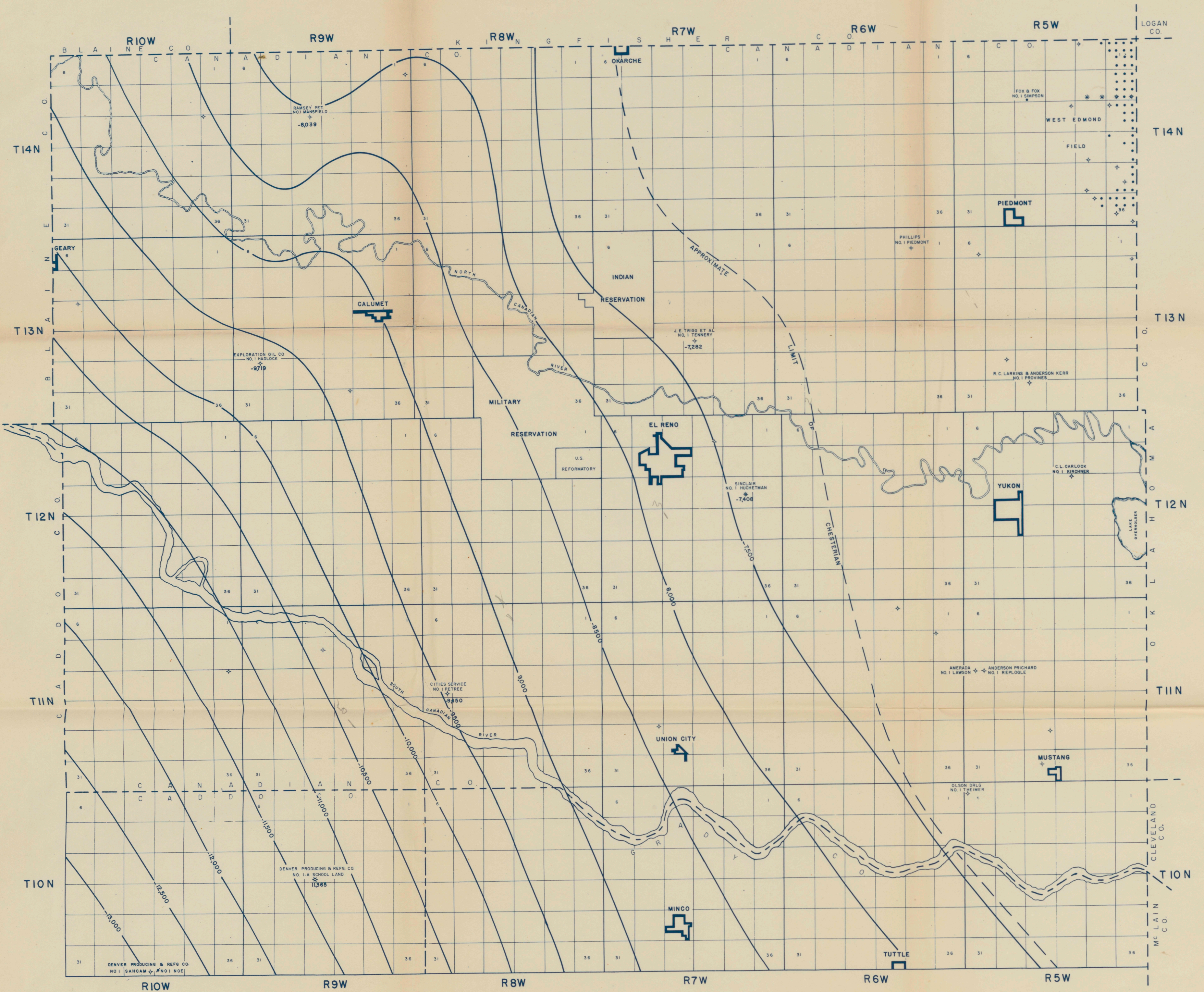
SCALE



S. KIMBERLIN, JR. 1922

FIGURE IX





STRUCTURE MAP

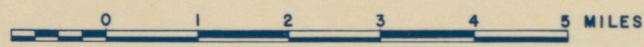
TOP OF

CHESTERIAN

CANADIAN COUNTY, OKLAHOMA

DATUM: SEA LEVEL      CONTOUR INTERVAL=500'

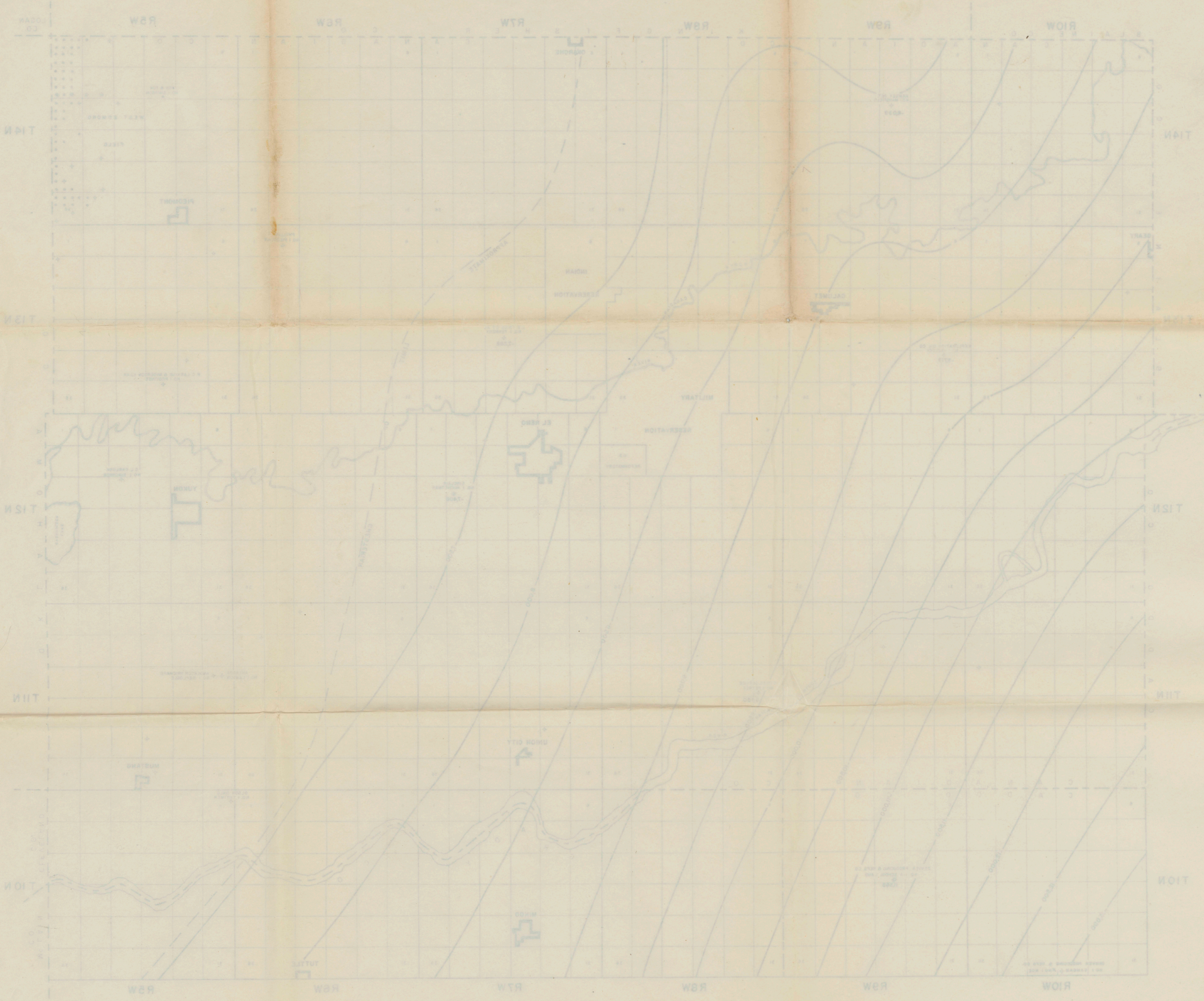
SCALE



Z. G. KIMBERLIN JR.      1953

FIGURE VII





STRUCTURE MAP

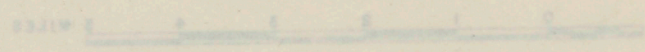
TOP OF

CHESTERIAN

CANADIAN COUNTY, OKLAHOMA

DATUM: SEA LEVEL      CONTOUR INTERVAL: 200'

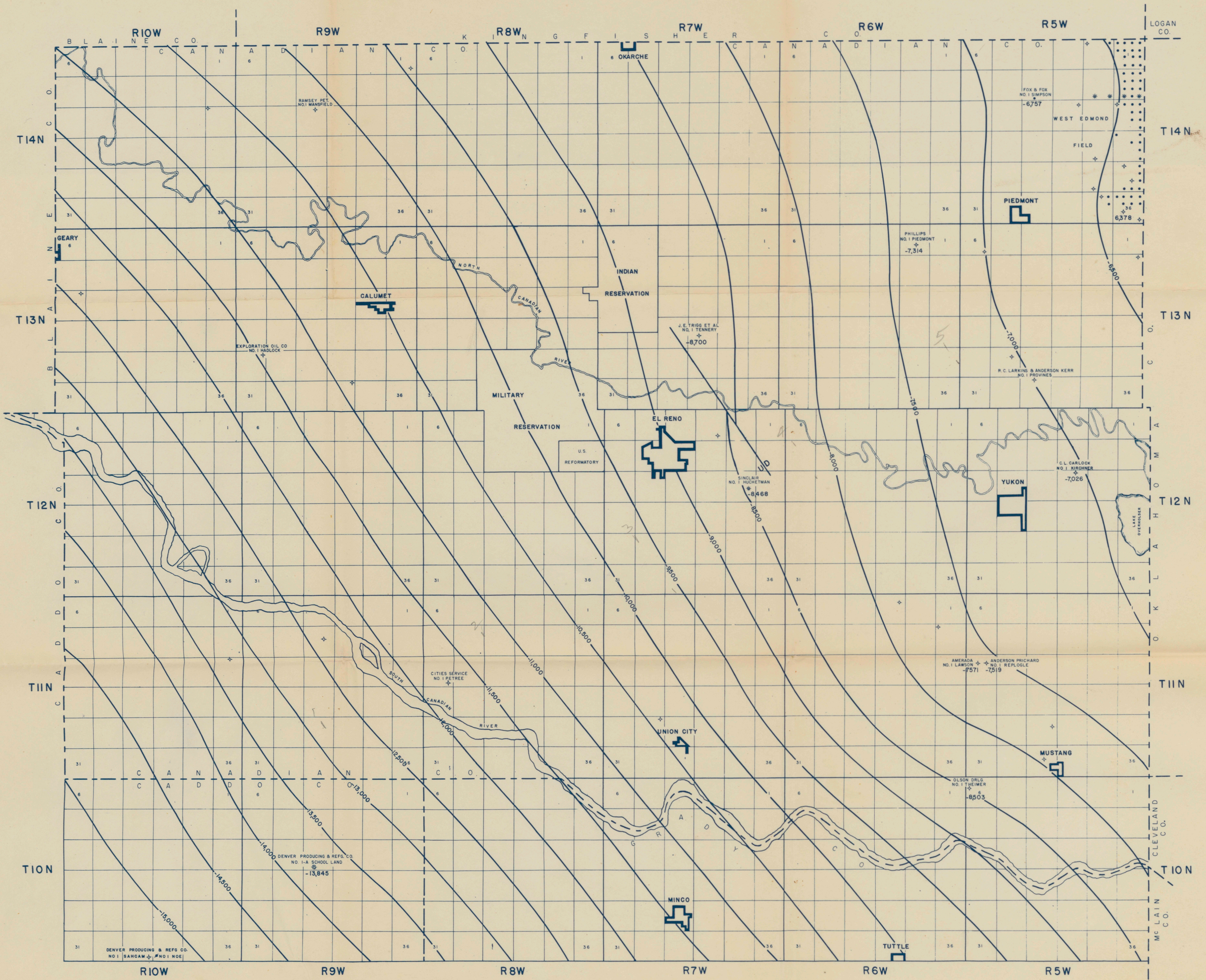
SCALE



E. A. KIMBERLIN, JR. 1922

FIGURE VII





STRUCTURE MAP  
TOP OF  
VIOLA LIMESTONE

CANADIAN COUNTY, OKLAHOMA

DATUM: SEA LEVEL      CONTOUR INTERVAL = 500'

SCALE



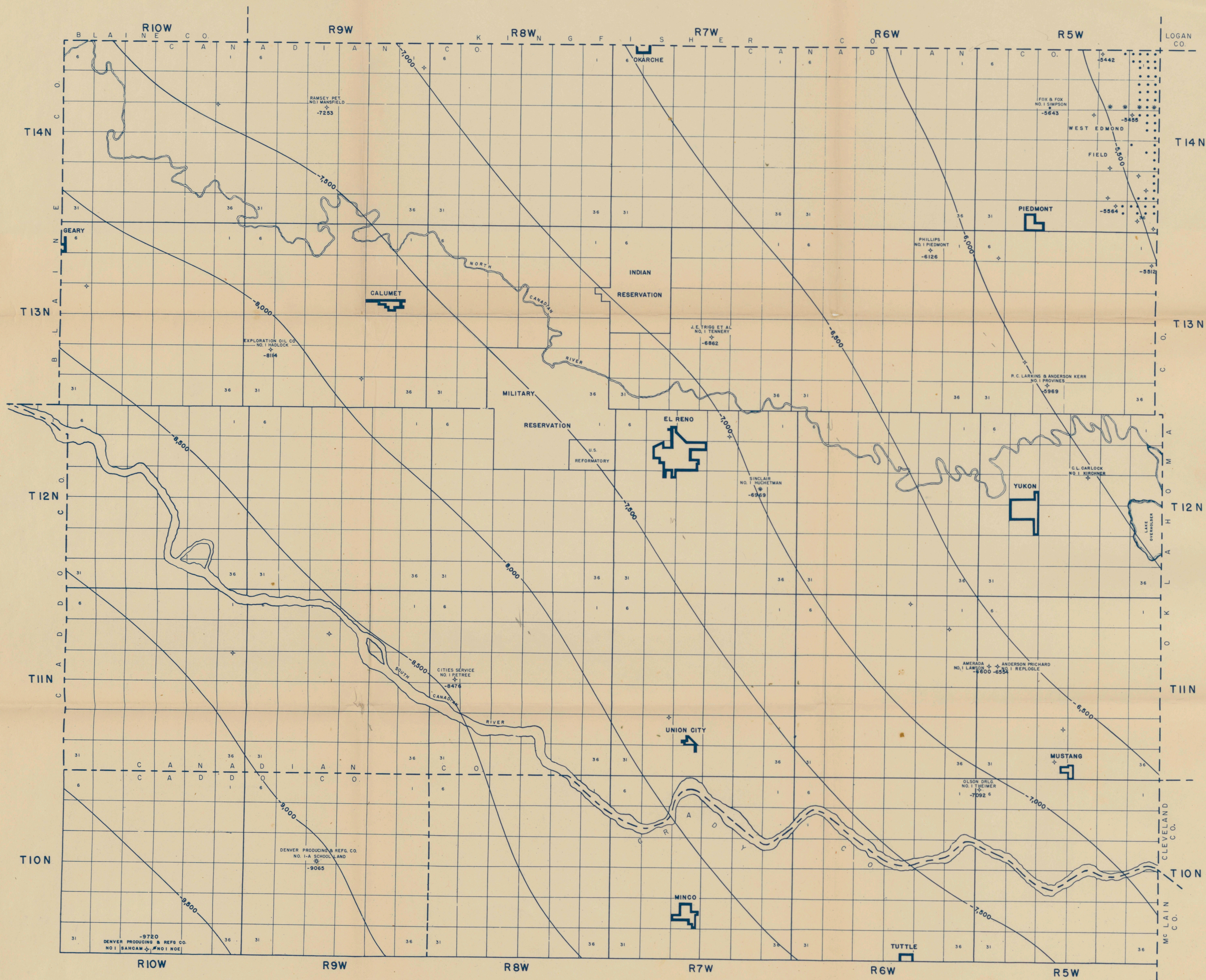
Z. G. KIMBERLIN JR.      1953

FIGURE VIII





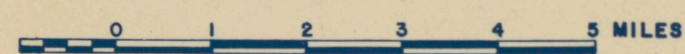




STRUCTURE MAP  
 TOP OF  
 OSWEGO LIMESTONE  
 CANADIAN COUNTY, OKLAHOMA

DATUM: SEA LEVEL      CONTOUR INTERVAL=500'

SCALE



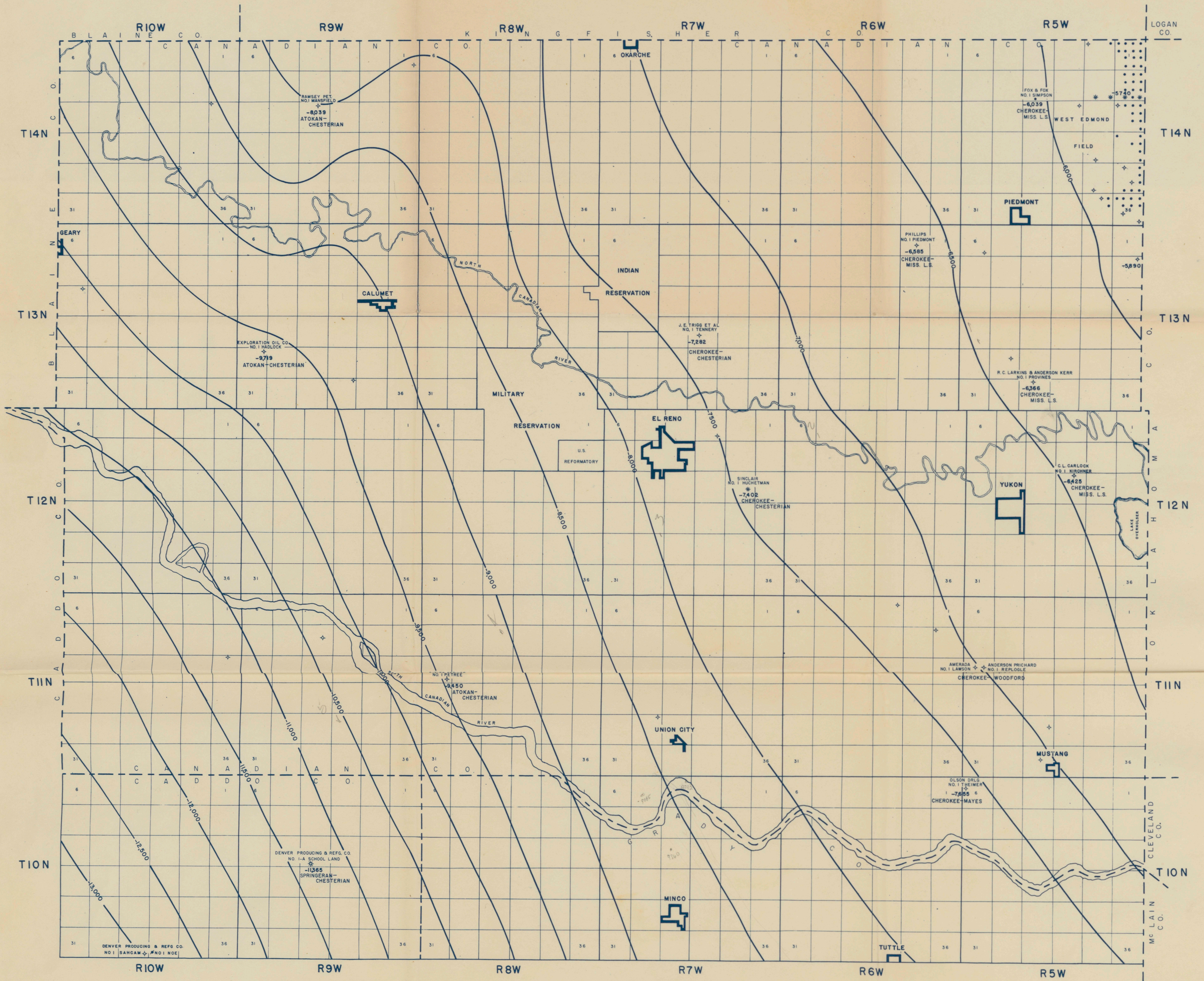
Z. G. KIMBERLIN JR.      1953

FIGURE V









STRUCTURE MAP

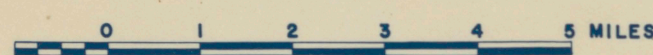
ON

BASE OF THE PENNSYLVANIAN

CANADIAN COUNTY, OKLAHOMA

DATUM: SEA LEVEL      CONTOUR INTERVAL=500'

SCALE



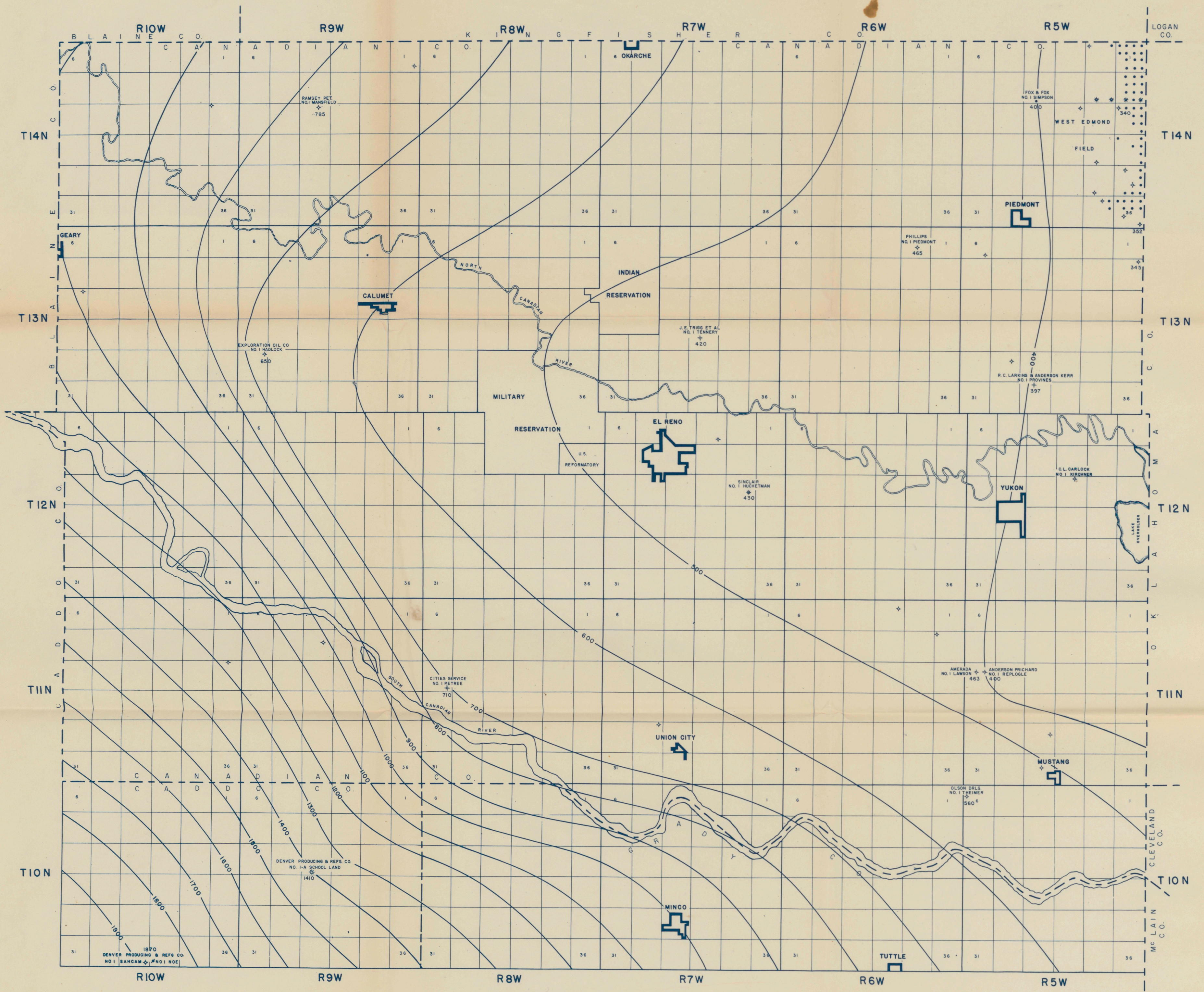
Z. G. KIMBERLIN JR.      1953

FIGURE VI





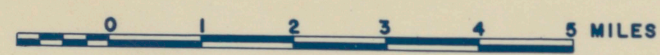




ISOCHOR MAP  
 OF THE INTERVAL  
 TOP OSWEGO-BASE CHEROKEE

DATUM: SEA LEVEL      CONTOUR INTERVAL= 100'

SCALE



Z. G. KIMBERLIN JR.      1953

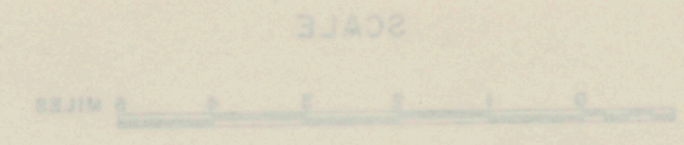
FIGURE IV





ISOCHOR MAP  
OF THE INTERVAL  
TOP OSWEGO-BASE CHEROKEE

DATUM: SEA LEVEL  
CONTOUR INTERVAL: 100'

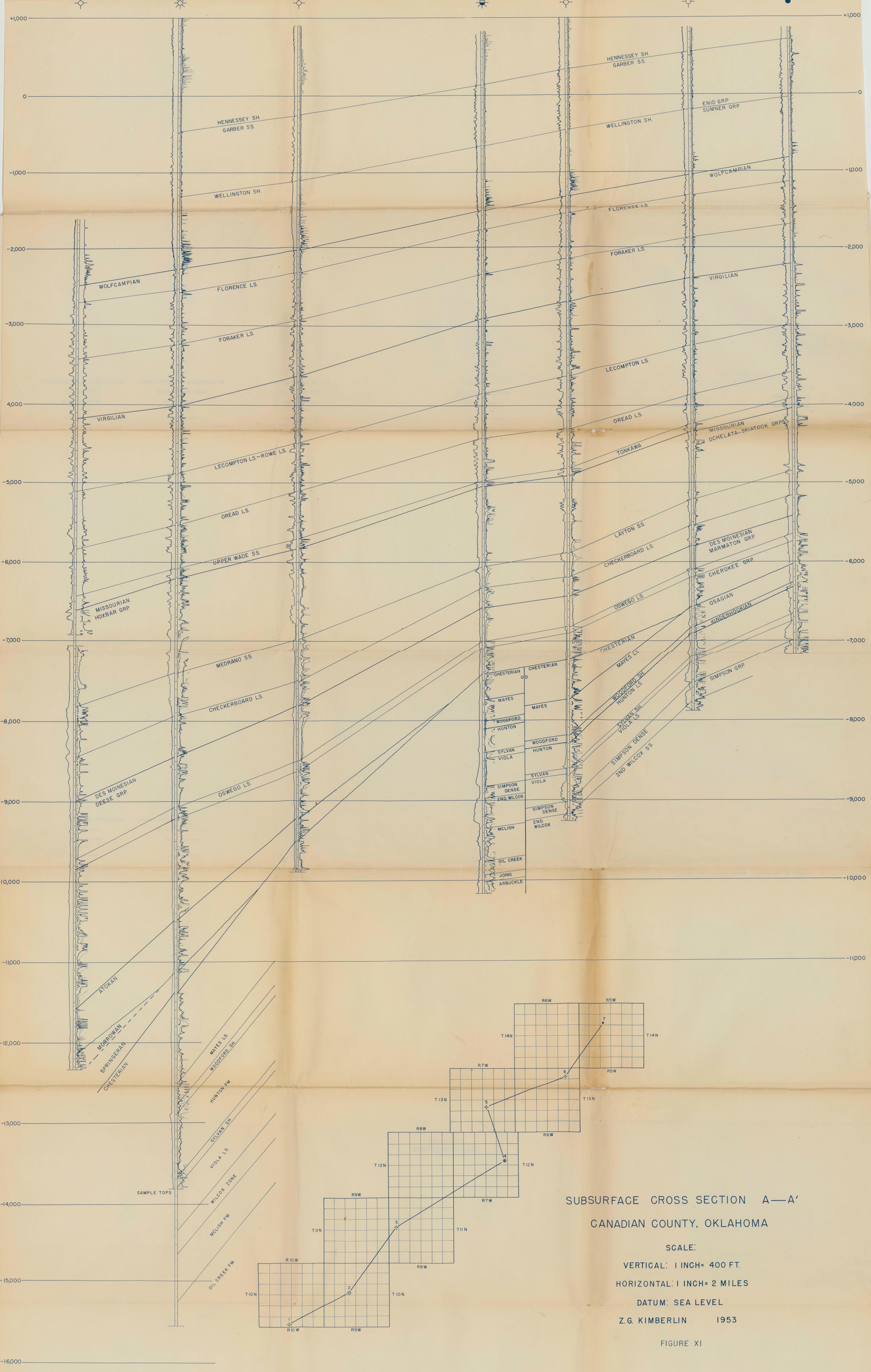


L. C. KINGBORN JR. 1902

FIGURE IV



1 DENVER PRODUCING & REFINING CO. NO. 1 SAN-GAM SEC 33 T10N R10W C SE SE ELEVATION 1420	2 DENVER PRODUCING & REFINING CO. NO. 1-A SCHOOL-LAND SEC 16 T10N R5W C SE SW ELEVATION 1335	3 CITIES SERVICE OIL CO. NO. 1 PETREE RANCH SEC 18 T11N R8W C SE SE ELEVATION 1324	4 SINCLAIR OIL CO. NO. 1 HUTCHEMON-UNIT SEC 14 T12N R7W NW NE SE ELEVATION 1344	5 TRIGG DRUG CO. NO. 1 TENNERY SEC 22 T13N R7W C NE SW ELEVATION 1396	6 PHILLIPS PETROLEUM CO. NO. 1 PIEDMONT SEC 2 T13N R6W SW NW SE ELEVATION 1295	7 FOX & FOX OIL CO. NO. 1 SIMPSON SEC 9 T14N R5W SE SE SW ELEVATION 1194
--	---	---	--	--	---	---



SUBSURFACE CROSS SECTION A—A'  
CANADIAN COUNTY, OKLAHOMA

SCALE:  
VERTICAL: 1 INCH= 400 FT.  
HORIZONTAL: 1 INCH= 2 MILES

DATUM: SEA LEVEL  
Z. G. KIMBERLIN 1953

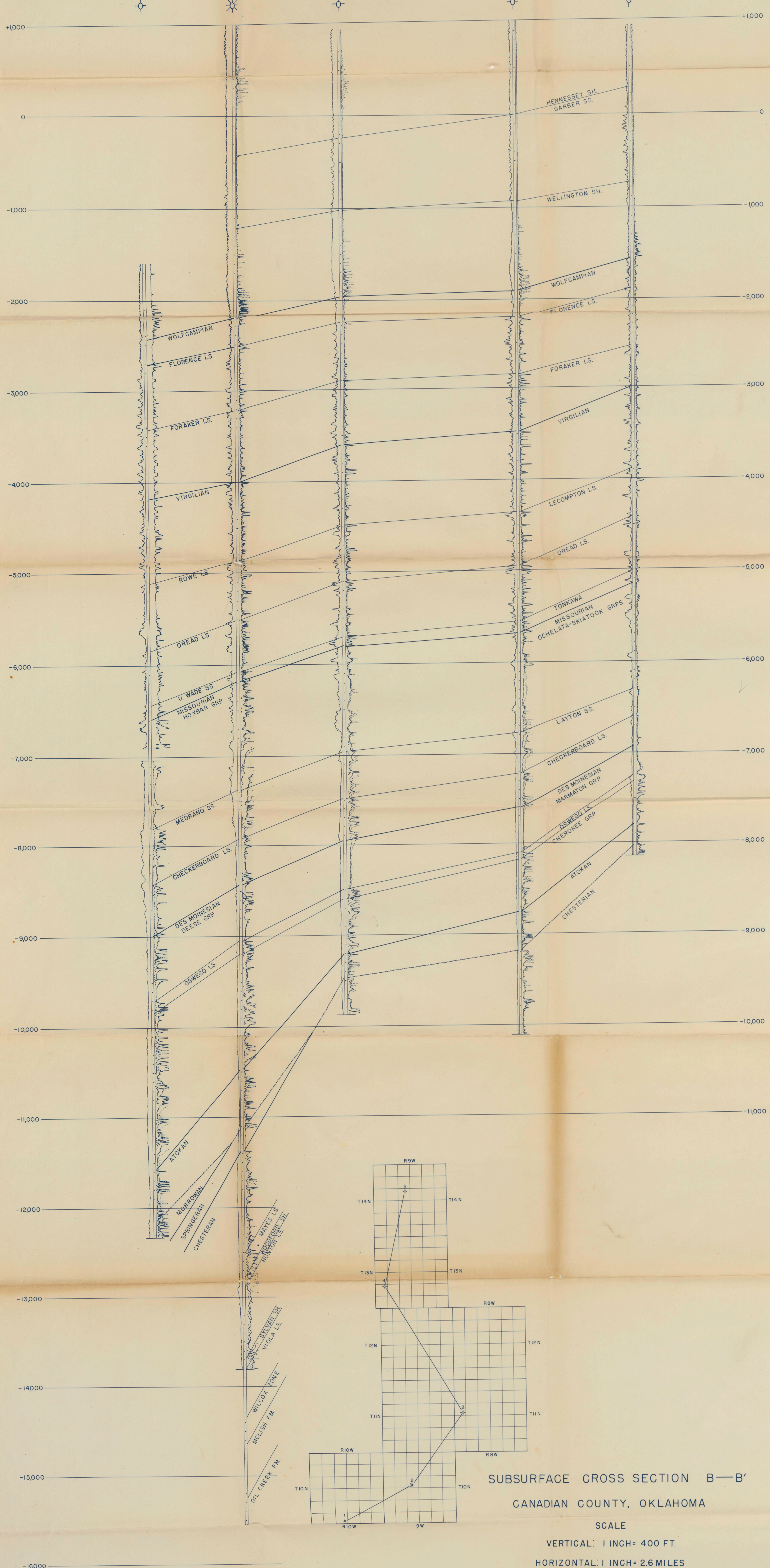
FIGURE XI







1	2	3	4	5
DENVER PRODUCING & REFINING CO.	CITIES SERVICE OIL CO.	EXPLORATION OIL CO.	RAMSEY PETROLEUM CO.	
NO. 1 SAH-CAM	NO. 1A SCHOOL- LAND	NO. 1 PETREE RANCH	NO. 1 HADLOCK	NO. 1 MANSFIELD
SEC 33 T10N R10W	SEC 16 T10N R8W	SEC 18 T11N R8W	SEC 30 T13N R9W	SEC 16 T14N R9W
C SE SE	C SE SW	C SE SE	SW NE NE	C NW NE
ELEVATION 1420	ELEVATION 1535	ELEVATION 1324	ELEVATION 1606	ELEVATION 1376



SUBSURFACE CROSS SECTION B—B'  
CANADIAN COUNTY, OKLAHOMA

SCALE  
VERTICAL: 1 INCH = 400 FT.  
HORIZONTAL: 1 INCH = 2.6 MILES  
DATUM: SEA LEVEL  
Z.G. KIMBERLIN 1953

FIGURE X



