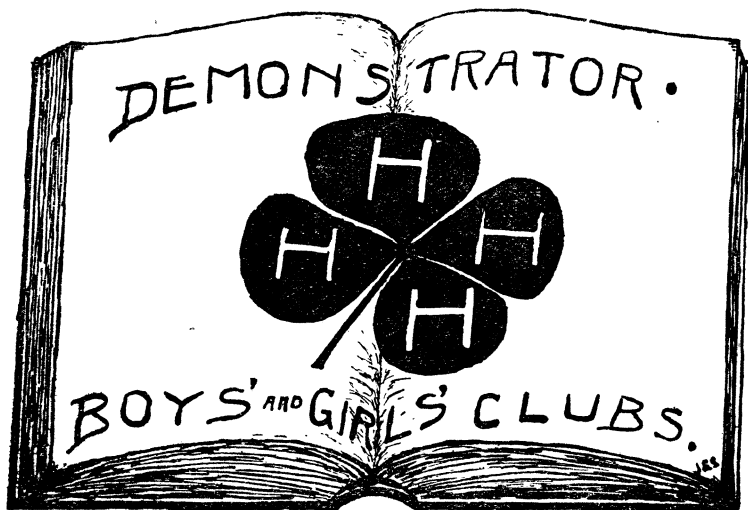


OKLAHOMA A. AND M. COLLEGE—EXTENSION DIVISION
Stillwater, Oklahoma
In Cooperation With the
UNITED STATES DEPARTMENT OF AGRICULTURE
States Relations Service
JAS. A. WILSON
Director and State Agent

PLANS FOR ORGANIZING BOYS AND GIRLS DEMONSTRATION CLUBS



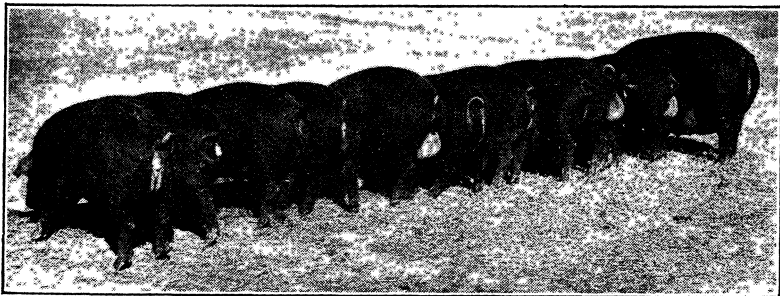
The Boys and Girls Demonstration Club Emblem, which Stands
for the Training of the
HEAD HEART HANDS HEALTH
Club Work Is Built Upon This Training

Address Communications to
BOYS AND GIRLS CLUB DEPARTMENT
Stillwater, Oklahoma

CLUB OFFICIALS

Oklahoma A. and M. College, Stillwater

- E. B. Shotwell State Boys Club Agent
- I. H. Needham Assistant State Boys Club Agent
- P. H. Lowery Assistant State Boys Club Agent
- Emma A. Chandler Assistant Director Home Demonstration Work
- Anna L. Diehl District Home Demonstration Agent
- Daisy M. Frazier District Home Demonstration Agent
- Alma Keys Assistant State Home Demonstration Agent
- Irma Rapp Assistant State Home Demonstration Agent
- Charles M. Smith Assistant in Charge of Poultry Clubs
- P. H. Hayes Assistant in Poultry Club Work
- D. C. Mooring Extension Horticulturist



This Fine Sow and Her Family of Nine Grunting Pigs Helped to Make a Pig Club Boy a Breeder of Purebred Duroc Jersey Swine

OUTLINE OF PLANS

BOYS AND GIRLS DEMONSTRATION CLUBS

Boys Agricultural Clubs and Girls Home Demonstration Clubs are organized under the supervision of the Extension Division of the Oklahoma Agricultural and Mechanical College, in cooperation with the United States Department of Agriculture. Boys and girls of Oklahoma between the ages of 10 and 18 years have the privilege of joining one or more of these clubs and securing the instruction sent out by the Boys and Girls Club Department.

Club work is being conducted for the boys and girls of Oklahoma for the following reasons:

1. Club work encourages club members to have a better education.
2. Club work is a means of earning dollars and cents.
3. Club work enables club members to raise more and better livestock, poultry and farm crops, thus increasing the family income.
4. Club work stimulates interest and cooperation among members of the immediate family and the people in the community.
5. Club work encourages rural families to provide more and better food at a lower cost.
6. Club work arouses interest in rural life and makes life in rural communities more attractive.
7. Club work teaches thrift, modern methods and efficiency in farm work.
8. Club work breaks down lonesomeness and isolation by providing play and recreation through local club organizations.
9. Club work develops the agricultural and livestock assets of the community.
10. Club work makes better home-makers, and thus better Oklahoma citizens.

Clubs Offered to Boys and Girls

Corn	Potato	Pig Breeding	Junior Dairy
Cotton	Fruit	Calf Fattening	Poultry
Grain Sorghum	Crop Rotation	Calf Breeding	Bee
Peanut	Pig Fattening	Sheep	Canning

Clubs are organized and supervised by the county agents and county home demonstration agents.

General Requirements

1. The club age limit is from 10 to 18 years of age, inclusive. A club member must be within the age limit on January 1 of the year in which the work is done.
2. Enrollment must be made on the official enrollment card and sent to the county agent, or county home demonstration agent, who will make

record of the enrollment and forward card to the Club Department of the A. and M. College.

3. Club members should read carefully all literature sent to them by the county agent, county home demonstration agent or the Club Department at Stillwater, Oklahoma, and follow all instructions as closely as possible.

4. Record books will be furnished by the Club Department in which to keep record of work as done, and to record other data, including summary and story. These records must be sent to the county agent by November 15, unless other data is given under the Requirements of Boys and Girls Club Work.

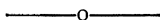
5. Completeness of records will be considered in computing final score, as well as results obtained in the club work, and the exhibits at fairs and club contests.

6. All club members are expected to attend all club meetings if possible.

7. All club members are expected to make an exhibit of their club work at the county fair or local club contest.

8. All girls enrolling in any club should complete the sewing required of Canning Club members.

9. Sons and daughters of county agents or county home demonstration agents are not eligible to compete for prizes with club members, but may enroll, receive club literature and exhibit in open classes at fairs. This will avoid misunderstandings and criticisms that might occur.



REQUIREMENTS OF BOYS AND GIRLS CLUB WORK

Corn Club.—A member must grow at least one acre of corn, use pure seed, follow suggestions as to seedbed preparation and best methods of cultivation; exhibit ten ears of corn at the county fair or club contest; keep a record of work done, and make a report as outlined in record book furnished.

Cotton Club.—A member must grow at least one acre of cotton, use pure seed, following instructions which will be sent to him; make an exhibit of twenty-five bolls at the county fair or club contest, and make the required report.

Grain Sorghum Club.—A member must grow at least one acre of kafir, milo, feterita or darso, using pure seed. He will follow instructions in the production of this crop; exhibit ten heads at the county fair or club contest, and make the necessary report.

Peanut Club.—A member must grow at least one acre of peanuts from pure seed. Spanish variety is recommended. Instructions must be followed, records kept, and an exhibit of one-half peck made at the county fair or club contest.

Potato Club.—Members of this club are required to grow at least one-eighth of an acre of either Irish or sweet potatoes. This club is adapted to the boys in town as well as the boys in the country. Two town lots 25 feet by 140 feet will furnish sufficient ground for this crop. Instructions should be followed, reports kept, and an exhibit of one peck made at the county fair or club contest.

Fruit Club.—Club members may select one or more of the fruits or berries listed below, now growing on the farm. Berries may be set out and the advantage secured when in bearing.

Members may choose two trees of apple, pear, peach, plum, cherry or apricot, two grape vines, one-twentieth of an acre of blackberries or dewberries, or one-fortieth of an acre of strawberries.

Members shall prune, spray and cultivate crop according to instructions sent out. They shall make a report on blanks furnished them and send to the county agent or home demonstration agent by November 15. They shall exhibit at the township, county or state fairs, one plate of five specimens of apples or pears, two pounds of grapes, or one quart jar of any of the other fruits or berries, canned.

No one contestant for individual prizes shall be awarded a first premium in more than two kinds of fruit.

The ten best exhibits by individual Fruit Club members at the county fair shall constitute the county Fruit Club team, and should be sent to the state fair.

Crop Rotation Club (Three Plans)—

Plan A. The club member will cultivate three acres for a period of three years. This three-acre plat should be divided into three equal parts. Plat No. 1 may be planted in corn, grain sorghum or cotton; No. 2 in cowpeas or peanuts; No. 3 in winter wheat or oats. The second year No. 1 should be in wheat or oats; No. 2 in corn, grain sorghum or cotton; No. 3 in peanuts or cowpeas. The third year No. 1 should be in cowpeas or peanuts; No. 2 in wheat or oats; No. 3 in corn, grain sorghum or cotton.

Record should be kept of each plat and reports made of each crop grown. Three record books will be furnished for separate reports.

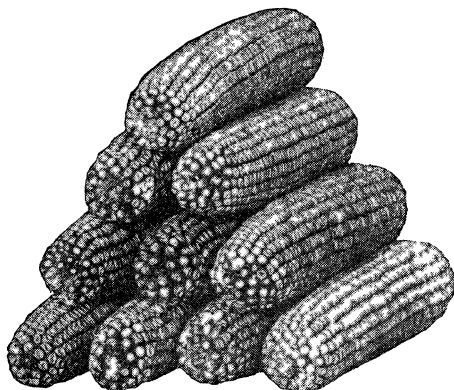
Plan B. The club member will cultivate two or more acres in some grain crop with a legume crop in alternating rows. Example: Corn may be planted in rows twice as wide as the usual planting, with a row of peanuts between the several corn rows, thus growing one acre of corn and one acre of peanuts on a two-acre plat.

The second year the corn rows should be planted where the legume rows were the previous year, and the legume rows will necessarily replace the previous corn rows.

Grain sorghums and cotton may likewise be grown with a legume crop in alternate rows.

Separate record books will be furnished for each crop grown.

Plan C. The club member will cultivate one acre for a period of three years, rotating the crops. The first year, corn, grain sorghum or cotton;



The Kind of Corn Club Members Raise

the second year, winter wheat or oats; the third year, peanuts or cowpeas.

In the Crop Rotation Club, instructions must be followed, records kept and submitted each year, and an exhibit made at the county fair or club contest, the same as required in all other clubs.

Pig Club (two phases)—(a) **Fattening Phase.**—The club member who takes up this phase of the Pig Club work must secure a pig, purebred or grade, gilt or boar, farrowed between March 1 and September 30. Full feeding begins December 1 and continues through a period of ninety days.

The pig must be weighed December 1 when record starts. It will again be weighed at the show at close of period. If not exhibited, the pig must be weighed at home or at market.

Complete records must be kept of all feed and expenses from December 1 to March 1. Record book must be sent to county agent as soon as contest closes. Pig Club members must be members of some crop club. Total score will be based on profit, daily gain, exhibit and record.

(b) **Breeding Phase.**—The club member should secure a gilt or sow. A record must be kept from the time the gilt or sow comes into the possession of the club member until September 15, or the time of the county fair; such records must show the weight and value of the offspring at close of contest. The offspring only can be exhibited at the state fair. Total score will be based on profit, daily gain, exhibit and records. Pig Club members must be members of some crop club.



A Calf Club Member With His Prize-Winning Angus Calf

Beef Club (two phases)—(a) **Fattening Phase.**—Each club member should secure a steer, born between September 1 and May 1 preceding the feeding contest. The feeding period is from November 1 to March 1.

The steer must be weighed November 1 when record starts. He will again be weighed at the stock show at close of period. If not exhibited, the steer must be weighed at home or at market.

Complete records of feed and expense must be kept. The total score will be based on profit, daily gain, exhibit and records. Beef Club members must be members of some crop club.

(b) **Breeding Phase.**—Each club member should get a purebred cow with calf at side. A feed and expense account must be kept from time the cow comes into possession of the boy until September 15. The records must include the expense of both cow and calf, and include the weight of calf at the beginning and close of the contest. The calf alone will be exhibited at the state fair. The total score will be based on profit, daily gain, exhibit and records. Club members are urged to keep their heifers for a number of years in order to establish a herd. Beef Club members must be members of some crop club.

Junior Dairy Club.—Each member of this club should secure a bred heifer, either grade or purebred. The rules in the Junior Dairy Club record book should be followed closely, and all records accurately kept. Total score will be based on yearly production, completeness of records, exhibit and profits. Junior Dairy Club members must be members of some crop club.

Sheep Club.—Each member should secure two or more purebred or high-grade ewes which will lamb in the spring. A record of feed and expenses must be kept from time the ewes come into the possession of the club member until September 15, or the time of the county fair. This record should include the weight of lambs at the close of the contest, and the weight of the fleece shorn from both ewes and lambs. Profit, daily gain, exhibit and records will be considered in computing total score. Sheep Club members must be members of some crop club.



Girls Can Raise Livestock, Too

Bee Club.—Each member should have at least one colony of Italian bees in a modern ten-frame hive. A record must be kept of the yield or surplus honey, the increase in colonies, the expenses of the season, and a complete list of the plants from which pollen and honey are gathered. An exhibit consisting of one ½-gallon jar of comb honey must be made at county fair or club contest.

Poultry Club—First-Year Members.—Each member must set three sittings of eggs, or set one sitting of purebred eggs and secure twenty-day-old baby chicks from purebred stock (if possible). A record book for keeping reports will be provided by the Boys and Girls Club Department. Each first-year club member will be expected to write a composition according to an outline furnished by the Boys and Girls Club Department. These compositions shall be sent to the agent not later than April 15. Compositions should be in the Office of Boys and Girls Club Department by May 1.

Letters of instruction will be mailed to club members each month.

Second-Year Members.—In order to qualify as second-year members, the club members enrolled in the previous year's work must have at least seven females and one male to carry over into their second year's work, and must have completed all first-year work. These need not have been raised by a club member, but can be purchased if so desired. A member not having this amount of stock will be classed as a first-year club member. Each club member will be expected to keep an accurate record on blanks provided by Boys and Girls Club Department. Club members should write a story of their year's work. This story should be sent to the agent by November 15.

Third-Year Members.—All second-year members who wish to qualify as third-year members must have at least fifteen females and one male, all purebred birds, to carry over into their third year's work, and must have completed all second-year work. These need not all have been raised by club member, but may be purchased. Each club member should keep Record on blanks provided by the Boys and Girls Club Department, and write a story of the year's work. This story should be sent to the agent by November 15.

Fourth-Year Members.—All third-year members who wish to qualify as fourth-year members must have completed all third-year work and must have at least twenty-five purebred females and two males to carry over into their next year's work. These need not all have been raised by a club member, but may be purchased. Each club member should keep reports 1, 2, 3 and 4. These reports will be furnished by the Boys and Girls Club Department. Each club member should write a story of the year's work and send it to the agent by November 5th.

Poultry Exhibits.—Club members will be expected to exhibit three birds at township, county and state fairs. These may be cockerels or pullets, or both.

Prizes at fairs should be offered on singles instead of trios.

Each variety should be judged separately, except for sweepstakes.

Canning Club.—Canning Club members must cultivate one-twentieth acre garden. All canning club girls will be expected to keep a daily record book and write a story of the year's work and send in to the county home demonstration agent by November 5th.

First Year Canning Club Members shall cultivate one-twentieth acre garden. They shall plant the following vegetables in the one-twentieth acre: Two rows tomatoes, two rows beans or cowpeas, or one row beans or cowpeas and one row peanuts; one row beets, and one row carrots. They shall exhibit at the township, county and State Fairs in quart jars six of the following canned products: Canned tomatoes, green tomato pickle,

beet pickle, canned carrots, chili sauce, ketchup, and two jars of fruit, one of which is peaches. Jars should have glass tops if possible.

Second Year Canning Members shall have one-twentieth acre garden. They should plant the following vegetables: 2 rows tomatoes, 2 rows beans or cowpeas, or 1 row beans or cowpeas and 1 row peanuts, one row beets, one row carrots. They should exhibit at township, county and State fairs in uniform quart jars, six quarts of the following products: Tomatoes, green tomato pickle, beans, carrot marmalade, canned beets, ketchup, peaches and one other fruit. All quart jars should have glass tops if possible.

Third-Year Club Girls shall cultivate one-twentieth acre vegetable garden, part of which is planted in tomatoes, part in beans, and part in one other vegetable. They should start a perennial if possible according to instructions given by home demonstration agent. They shall exhibit at the township, county and state fairs, in uniform quart jars, 1 jar of tomatoes, 1 jar of soup mixture, using corn and okra, 1 jar beans, 1 jar of beans (utility pack), 1 jar of ketchup, 1 jar of Dixie relish, 1 jar of beet pickle, 1 jar of canned beets, 1 jar of spiced carrots, 2 jars of fruit, 1 jar of peach or watermelon preserves. All quart jars should have glass tops if possible.

Fourth-Year Girls shall cultivate one-twentieth acre vegetable garden in which they may specialize all on one vegetable, or may have a variety of vegetables. They should start a second perennial if perennial was started during the third-year work. If not, start the first perennial according to instructions given by agent this year. They should exhibit at the township, county and state fairs, in uniform quart jars, 1 jar of Dixie relish, 1 jar of ketchup, 1 jar of tomatoes, 1 jar of beans, 1 jar of corn relish, 1 jar peas, 1 jar of peach pickles, 1 jar of cucumber pickles, 1 jar of canned carrots, 1 jar of peach preserves, 2 jars of other fruits. All quart jars should have glass tops if possible.

Fifth and Sixth-Year Girls shall cultivate one-tenth acre garden. They may have one-twentieth acre in perennials, a variety of vegetables, or may



Girls Canning Club Exhibit, Oklahoma State Fair and Exposition

specialize in one vegetable. Agents should be consulted before the garden is made. They should exhibit at township, county and state fairs, in uniform quart jars, 2 jars of peaches, 2 jars canned pears, 2 jars of gingered pears, 2 jars of peach preserves, 2 jars watermelon preserves, 2 jars of carrot marmalade. All quart jars should have glass tops if possible.

Bread Clubs have been discontinued.

Sewing Work for All Club Girls.—All club girls are expected to do the required sewing. Sewing bulletin for club members No. 69 will contain all instructions used by club members.

All first-year girls shall make a holder, wall pocket, hem a dishtowel and make an apron.

All second-year girls shall make a cap and embroider the club emblem on apron and cap, and make a nightdress. If for any reason the first-year sewing has not been completed, it should be completed the second year.

All third-year club girls should make a club dress of chambray, gingham or white material if possible.

All fourth-year girls should make a blue serge sailor suit if possible.

All fifth and sixth-year club girls should make a luncheon set, consisting of a lunch cloth not less than 1 yard square, and six napkins 12×12 inches. Luncheon set should be finished with a plain picoted edge.

COLORED BOYS AND GIRLS CLUBS

Colored Boys Club.—This club is for colored boys only. All of the various club projects are included in this Colored Boys Club. The suggestions previously given under the several club headings should be used by the colored boy in his work. The members of this club compete among themselves in the several features embraced in this one club.

Colored Girls Club.—This club is for colored girls only. Plans for this work will be mailed upon request.

Prizes.—Counties in which Colored Boys and Colored Girls Clubs are organized usually give premiums for this work at the county fair. Both state fairs give premiums for this work. Amount and classification may be learned by consulting the catalogs of the state fairs.

REQUIREMENTS FOR STATE FAIR CONTESTS

The ten highest scoring exhibits at county fairs in each club except Livestock and Poultry Clubs shall be sent to the state fair, and shall constitute a team to compete against teams from other counties at the state fair.

The best animals exhibited in each of the Livestock Clubs shall be sent to the state fair or to the spring livestock show at Oklahoma City.

Each county should exhibit not less than fifteen birds at the state fair. Judging at the state fair will be by singles.

Method of Grading.—In order not to give one member an advantage over another, the large scholarship prizes are not offered for yield or exhibit alone, but according to a scale of points.

Crop Clubs.—Yield counts 30 points, profit 30 points, exhibit 20 points, and written report 20 points.

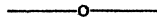
Fruit Club.—Yield 30 points, profit 30 points, exhibit 20 points, and written report 20 points.

Livestock Clubs.—Total gain in weight 30 points, profit 30 points, and record 20 points.

Bee Clubs.—Surplus honey yield, 30 points; profit, 30 points; exhibit, 20 points, and report 20 points.

Poultry Clubs.—First-year Poultry Clubs, number of birds at weaning counts 40 points; exhibit 25 points, and reports and composition 35 points. Second, Third and Fourth-Year Poultry Clubs, size of flock 10 points, profit 30 points, number of birds at weaning 25 points, exhibit 15 points, and reports and composition 15 points.

Canning Clubs.—Business showing counts 30 points, quality 30 points, record book 20 points, and history of season's work 20 points.



PRIZES FOR EXHIBITS

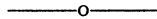
As an inducement for good work, a number of county and state premiums are offered.

County Fair Premiums are given for the best exhibits made by club members at the county fair. Where there is no county fair, a club contest will be held. Exact amounts of premiums may be found in county fair catalogs.

State Fair Premiums are given for the best individual and county team exhibits at the state fairs. Exact amounts of premiums may be found in the state fair catalogs.

County Scholarships.—All first and second prize-winners in each club having five entries or more at the county fair or county club contest shall win a scholarship in the State Fair Schools. Members winning scholarships shall be allowed to attend one of the State Fair Schools, and will be entitled to board and lodging for the duration of the school. Winners should use premium money to apply on railroad fare to and from State Fair Schools, as this must be furnished by the club members themselves or by local associations.

State Fair Schools are conducted by the Oklahoma A. and M. College Extension Division at the Oklahoma State Fair and Exposition at Oklahoma City, and at the Oklahoma Free State Fair at Muskogee.



STATE SCHOLARSHIP PRIZES

The following scholarships to the Oklahoma A. and M. College have been given to winning club members in preceding years, and will probably be continued:

The Oklahoma State Board of Agriculture.—Four scholarships, one to the boy and one to the girl who makes the best grade in work at the State Fair Schools, and one to the boy and one to the girl who makes the best grades at the Farm Congress. These scholarships are valued at \$125.00 each.

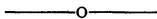
The Oklahoma Bankers Association.—One scholarship to the boy in each of the five banking groups in the state who secures the highest total score in club work.

One scholarship to the girl in each of the five banking groups, except Group 1, who secures the highest total score in club work.

These scholarships are valued at \$160.00 each.

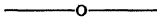
The Cottonseed Crushers Association.—One scholarship to the boy who scores the highest number of points in the Cotton Club. Value of scholarship \$160.00.

The Oklahoma Millers Association.—One scholarship to the boy who scores the highest number of points in the Wheat Club. Value of scholarship \$160.00.



CLUB CHARTERS

Whenever there are as many as ten boys and girls enrolled in club work within any school district or community, an organization should be perfected by securing an application blank from the county agent or Club Department at the A. and M. College. This application blank, properly filled out, should then be sent to the county agent, who will forward it to the Club Department, upon receipt of which the department will issue a club charter. The teacher of the district can render a great service by assisting the county agents and the club members in helping to perfect this organization and in making it interesting to the club members.



CERTIFICATES

A certificate of promotion will be issued to each club member who completes the club work for the year, and sends in his report fully completed. This will be continued for three years, at the end of which time a diploma will be issued showing that the club member has done three successful years of club work. This diploma will recommend that the club member be recognized as a junior demonstrator under the direction of the county agent.

All club members who have a grade of 85% in the Office of Boys and Girls Club Department will receive a certificate, signed by the State Superintendent of Public Instruction, Director of Extension, and agent in charge of club work. This certificate will excuse club member from eighth grade examination in agriculture or domestic economy.

For further information in regard to Boys and Girls Clubs, see your county agent, county home demonstration agent, county superintendent, teacher, banker, cottonseed crusher or miller, or write to Boys and Girls Club Department, Oklahoma A. and M. College, Stillwater, Oklahoma.

Each teacher should have a copy of Circular No. 101, "The Local Club Organization". Each organized club should have a supply of the last named circular.