

# Schools AT WAR

A REPORT TO THE NATION



*Independence Hall*  
PHILADELPHIA  
1776

SPONSORED BY \* \* THE WAR SAVINGS STAFF OF THE U. S. TREASURY  
DEPARTMENT, THE U. S. OFFICE OF EDUCATION AND ITS WARTIME COMMISSION

SCHOOL *Newalla* <sup>☆</sup>

ADDRESS *Newalla Okla.*

STREET TOWN STATE

*Oklahoma County*

Newalla

Box 5



# WE REPORT TO THE NATION

We herewith submit a bird's-eye view report of our  
SCHOOLS AT WAR Program. It includes factual and pictorial  
accounts of our War Savings Program and other outstanding  
war activities. It is tangible proof of the resourcefulness, skills,  
activities and the will to win of every student, teacher and  
parent enlisted in our SCHOOLS AT WAR Program.

★ ★ ★ ★ ★ ★ ★ ★

Name of School Newalla

Address Newalla, Okla.

Enrollment 70 Grades 1-8

No. of Teachers 2 No. of Classrooms 2

Size of Community Population 102

Cash Value of War Stamps and Bonds sold during SCHOOLS AT  
WAR Program \$144.00





**TO  
VICTORY**



What Our School Has Done

We have adopted the three  
Citizens' commands: Save!  
Serve! Conserve!

Save!

We children have earned  
nickles and dimes by carrying  
in wood for several elderly  
people in the community.

We have done chores for  
women who's husbands are  
in the Service. There is 60  
children enrolled in the  
schools. But even as a little  
school, we are trying to do  
our best in saving money  
for stamps and bonds.

Of course the stamps and  
bonds are personal ones.

But the children have bought  
them their selves. The  
amount bought by the  
school children alone is:

\$ 44. 00



serve!

In training we have learned first aid, home and farm accidents, marksmanship, nutrition, physical education. We hope to be experts at all of these.

In making: We have made menu books and baskets for the Junior Red Cross. The boys are working on airplane models.

Volunteering. We have all joined Junior Red Cross. The girls took donations for U. S. O. About  $\frac{1}{2}$  or 50% of the children live on farms. They help with all the work. And most of the children have separate victory gardens of their own. We are very proud of our school.



EVERY SCRAP



IS NEEDED

Conserve: In collecting we have collected two long tons of scrap iron, rubber & tin. We have also collected waste fats, paper and other different miscellaneous things in repairing and using. The children take their shoes to a small town near here and have them repaired. Our old clothes are patched and sewed until they are rag. We don't use athletic equipment. It is not necessary. We are turning to an all out war effort (Pick up your scrap: Lick the Japs) We take care of all the furniture in the school & our homes. We are very careful with our present furniture because we know its hard to replace. and if we do replace it. We are holding back the government and us from Victory.

On To Victory With  
SCHOOL S-AT-WAR



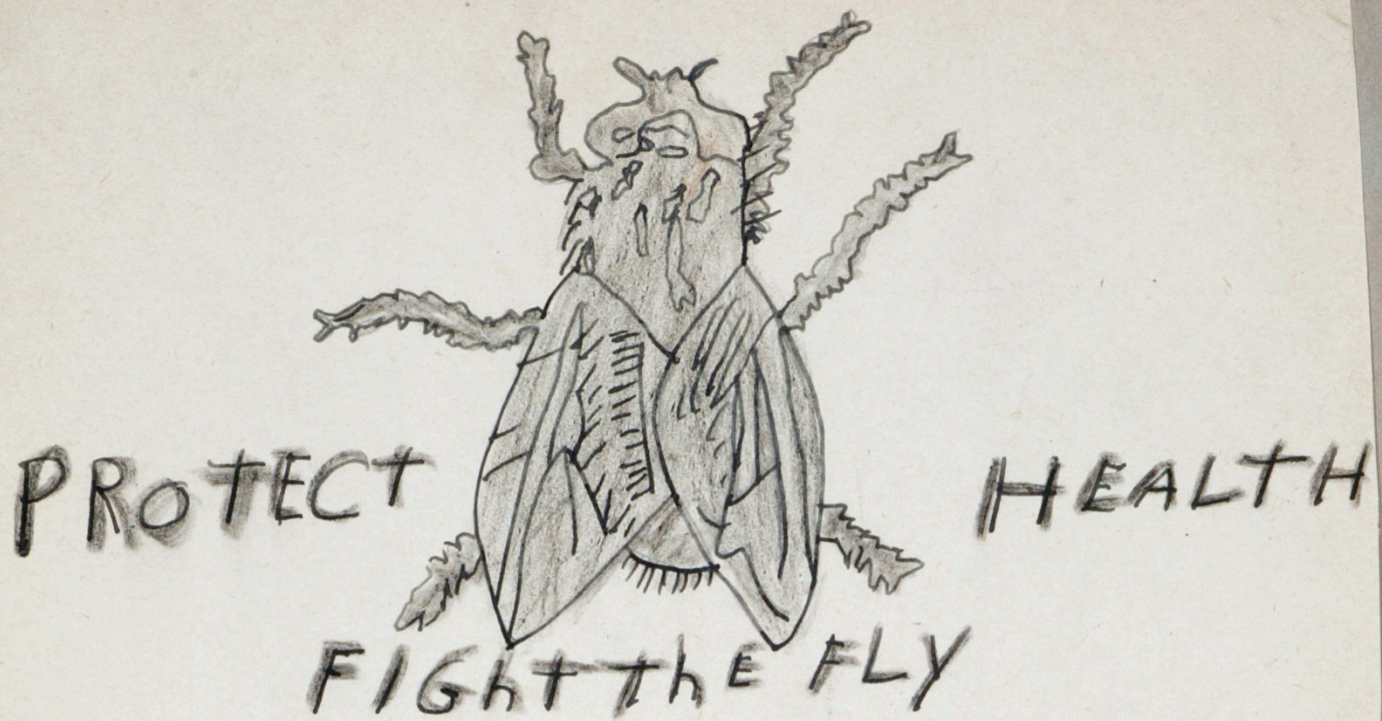
## Wasting Nothing

The Mothers of this community is saving waste fats that are not of need they turn it in to our official waste fat station of buying war-Bonds & Stamps with the money.



Turn In all Waste Fats



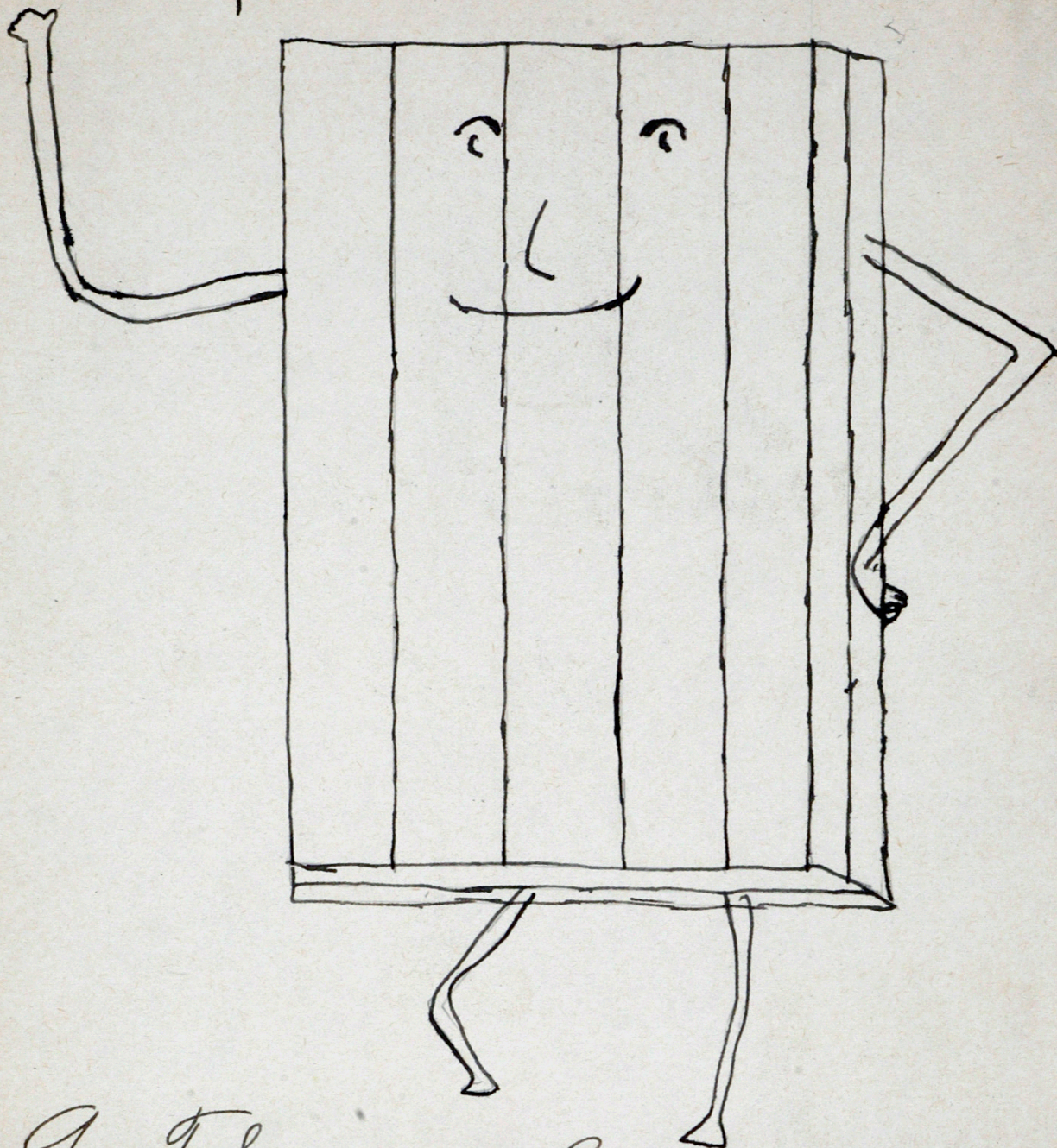


MAN'S WORST ENEMY





Boy + Cigarette = ?



A Tobacco Lecture

"I am not much of a mathematician," said the cigarette, "but I can add numerous troubles to a boy, I can subtract from his physical energy, I can multiply his aches and pains, I can divide his mental powers, I can take interest from his work and discount his chances for success."



### H-H Club Exhibit

In our H-H exhibit the first year girls (1st manual) exhibited aprons, tea towels and sewing boxes. They won 1st prize (Blue Ribbon) in our school exhibit. Second prize in district fair at Turley, Oklahoma and Third prize at County. Their work was neat.

The second year girls (2nd manual) exhibited dresses, sewing boxes, hand towels and note book. In our school exhibit we won three first and 2 seconds. In district we won all seconds and in County we won 3 seconds and 2 thirds. We are proud of our work.

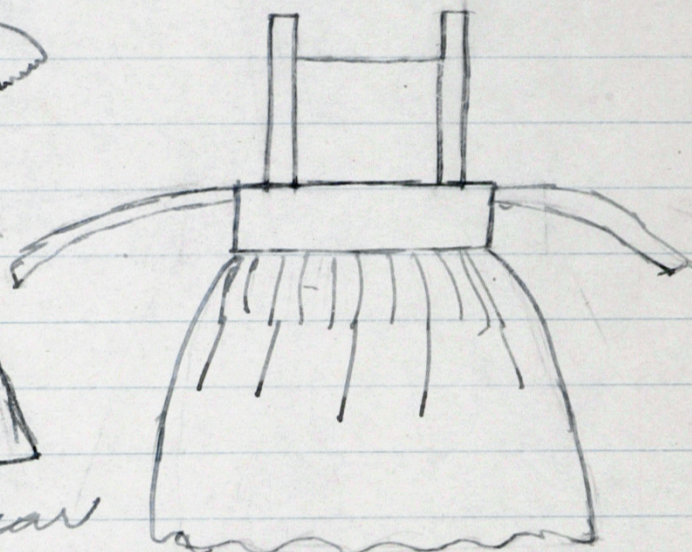
The third year girls exhibited: dresses, slips, pillow cases, and comfort protectors. They won 2 seconds & 1 thirds in school exhibit.



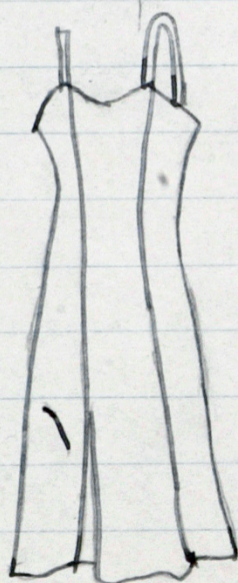
and three thirds & 1  
second in District fair.  
and 4 thirds in County.



Second year girls



1st year girls



Third year girls

This is just a  
simple chart.  
Showing some of  
the work.



## Infantile Paralysis

In our Infantile Paralysis program we collected \$6.05. There are two rooms in our school. The principal room collected \$389 and the other room \$216. Almost all of the people in our community gave to the program. The children worked hard.

In our school room activities we had a lesson & discussion on Infantile paralysis. We also had the picture and obituary of a man who had Infantile Paralysis. He was very active. Although his parents had money enough to educate and take care of him. He gave a lot of his earnings to the Infantile Paralysis Program. He was a Christian worker.





THANKFUL

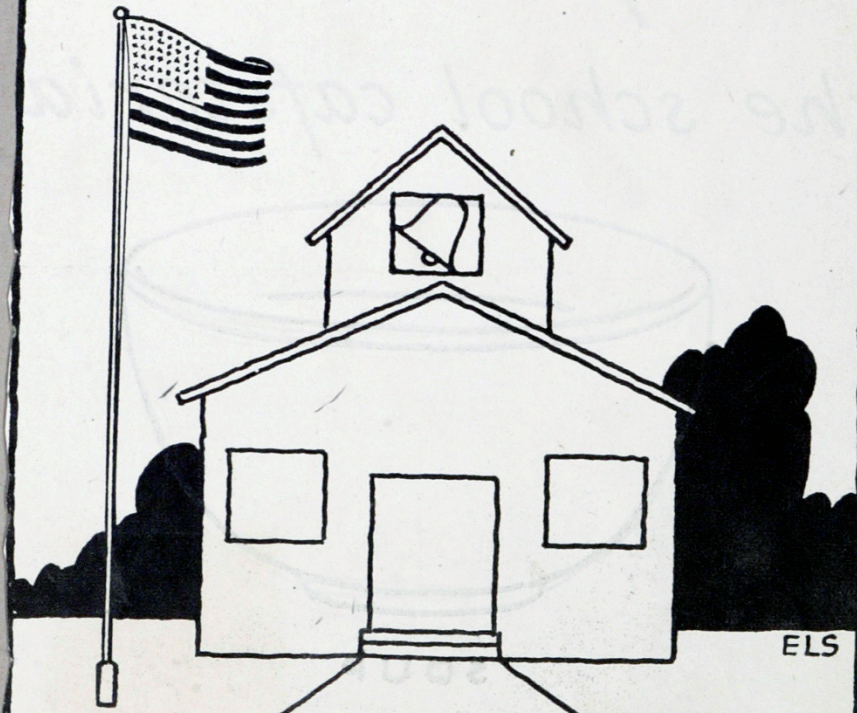
TO  
BE



ELS

AMERICANS

ALL TOGETHER



ELS

You  
YOUR SCHOOL · YOUR COUNTRY



Hi yi Pal





## Our Soldier

Arba Williams.

"Our Soldier," Mr Arba Williams, was President and Director of "The Newalla School Board". Before drafted into the United States army, while he was here, he did a great work, helped us have our school lunches, here at our school. He was interested in every boy and girl, as he had no children, made him double interested in school work, he gave time and spent money in behalf the no. 66, District, made trips after trips to Okla. City, and other head quarters in behalf of this school. He can never do enough for his time that was spent, we appreciated him as our friend. Every child loves him. He visited our school two wks. ago, while he was at home on a furlow. He spent  $\frac{1}{2}$  day and took lunch with the school children, and expressed, himself, as being proud of the newalla school, and thought every one was doing good work, and thanked each Teacher for their successful work, and asked each child to write him.

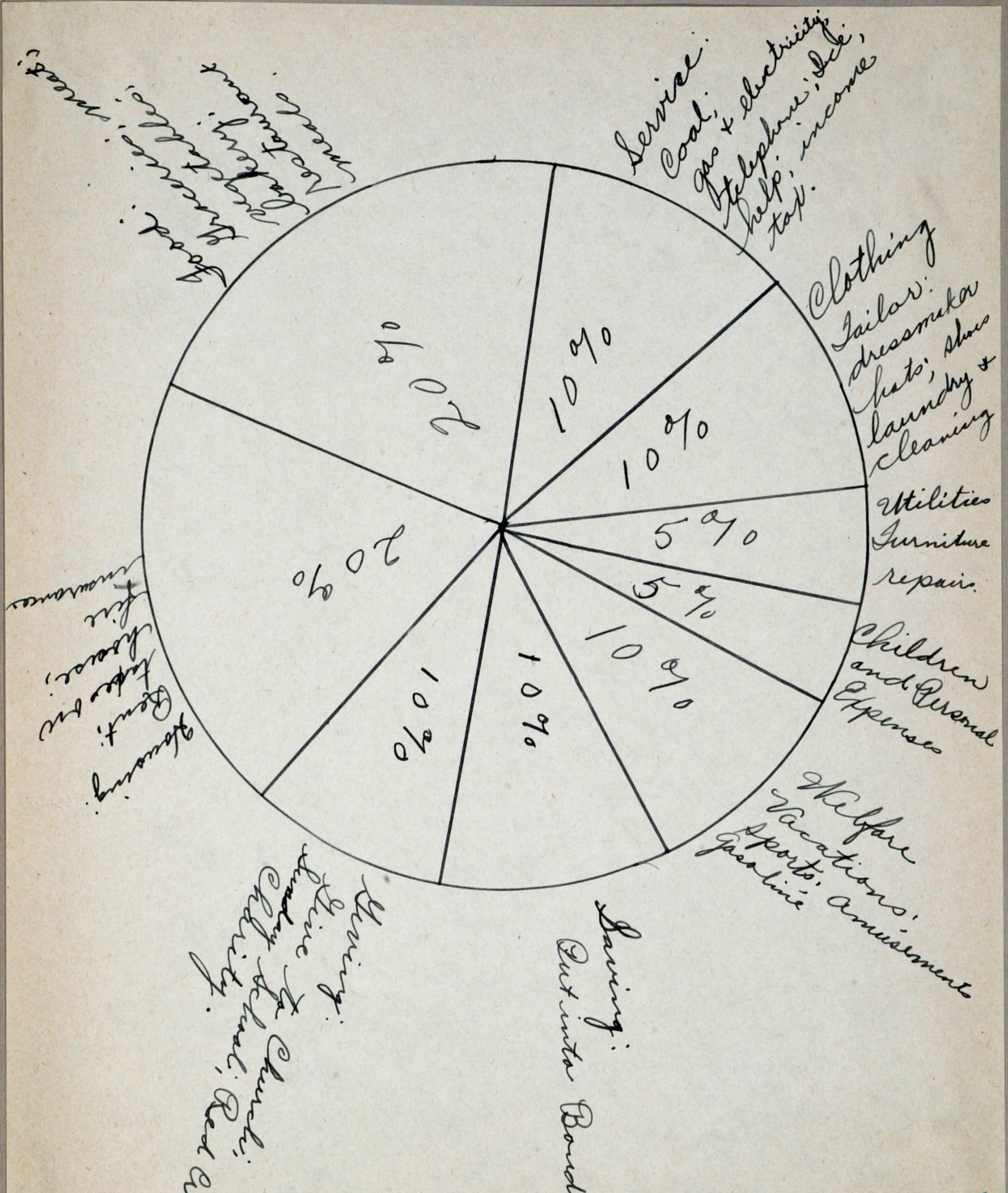


# Buying Wisely

HOUSEHOLD MEAT CHART									
Weeks	MON	TUE	WED	THUR	FRI	SAT	SUN	Total Cost for Wk	
								Dollars	Cents
1			Pork .50				Beef .80	\$ 1	.30
2		Chick. 36			Pork 45			\$	.81
3	Chick, 30			Beef 60				\$	.90
4			Pork 76				Chick 40	\$ 1	.16
month				Monthly Total				\$ 3	.17
1	Beef 75					Pork 80		\$ 1	.55
2			Chick 39				Pork 65	\$ 1	.04
3		Beef 68				Chick 26		\$	.94
4	Beef 48			Pork 48				\$ 1	.38
month				Monthly Total				\$ 4	.91
Total Cost of Meat for 2 months								\$ 8	.08

meat chart worked out  
in her home.  
Made By  
Louise Patterson





A Budget That Can be Used  
By any One.



11" x 14"







The State Flag of Oklahoma



11" x 14"

