



Pest e-alerts



Entomology and Plant Pathology, Oklahoma State University
127 Noble Research Center, Stillwater, OK74078
405.744.5527

Vol. 12, No. 22

<http://entopl.okstate.edu/Pddl/>

Jun 7, 2013

Reminder! Early Bird Gets the Grasshopper: Management Options in Rangeland, Pastures and Crops

Tom A. Royer, Extension Entomologist

Justin Talley, Extension Livestock Entomologist

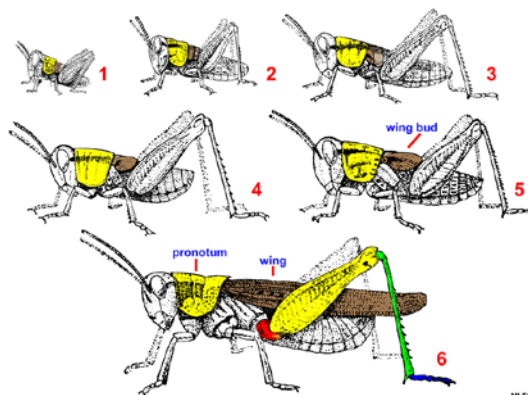


Grasshoppers are in an upward cycle for causing problems. We have endured two years of severe drought which has let them increase in numbers. They have been hatching for several week now, and even though they are small and don't seem to be causing much damage, now is the best time to apply management, because when they get big, they are very difficult to control and will cause severe damage.

Grasshopper control in rangeland is probably never justified until numbers exceed 12 per square yard. Sprays are most effective if timely and practiced over large areas. The best time

to control them is from mid-May through about July 1, while they are wingless (2nd through 4th instar). Once grasshoppers sprout wings, they can fly for miles in search of food. There are three options that a producer might consider:

Spot Treatments in Hatching Areas or Border Sprays: Grasshopper eggs are often deposited in concentrated egg-laying sites, such as pastures, ditches and untilled field margins. Grasshopper nymphs tend to remain in their hatching areas for some time after they emerge.



MLF2011

So, spot applications of an approved insecticide in those areas can effectively reduce grasshopper numbers.



RAAT Treatments with Diflubenzuron: Two recent developments offer an economical and environmentally responsible way to manage grasshoppers in rangeland or pasture. The first development occurred when diflubenzuron (Dimilin) was registered for use in rangeland and pastures to control grasshoppers. Diflubenzuron has several appealing qualities from a human and environmental safety standpoint. It disrupts the molting process of grasshoppers and must be ingested to be effective. Because of its specific activity on the invertebrate molting process, it is very non-toxic to vertebrate wildlife but should not be applied to ponds or streams. It must be ingested to be effective, so it has minimal impact on beneficial or non-target insects. Finally, it is inexpensive compared to other registered products.

The second development is an IPM approach called a Reduced Agent and Area Treatment (RAAT). With this strategy, the rate of the chemical is lowered, and applied in alternating treated and untreated strips. It takes advantage of the grasshopper's natural tendency to move as they feed. As they move from untreated to treated areas and eat foliage treated with diflubenzuron, they are killed when they try to molt. An additional benefit of a RAAT application is that it does not cover the whole landscape with a pesticide application, thus reducing the impact of the spray on beneficial and non-target organisms. RAAT applications can be made with an aerial or ground application, but diflubenzuron is the only insecticide that specifically allows a RAAT application. A RAAT treatment can reduce application costs by 50-60% and 65-70% less insecticide is applied compared to conventional broadcast treatments.

Broadcast Applications: A producer can apply a registered insecticide as a spray or bait to control grasshoppers. It may be justified in improved pasture where hay will be harvested as a cash crop, but for grazing purposes, consider the cost of supplying hay versus spraying before making such a decision to treat.

Grasshoppers can seriously damage row crops and alfalfa as well. For more information, check out [EPP-7196, "Grasshopper Management in Rangeland, Pastures, and Crops"](#) and [EPP-7193 "Management of Insect Pests in Rangeland and Pasture"](#).

Dr. Richard Grantham
Director, Plant Disease and Insect Diagnostic Laboratory

Oklahoma State University, in compliance with Title VI and VII of the Civil Rights Act of 1964, Executive Order 11246 as amended, Title IX of the Education Amendments of 1972, Americans with Disabilities Act of 1990, and other federal laws and regulations, does not discriminate on the basis of race, color, national origin, gender, age, religion, disability, or status as a veteran in any of its policies, practices or procedures. This includes but is not limited to admissions, employment, financial aid, and educational services.

Issued in furtherance of Cooperative Extension work, acts of May 8 and June 30, 1914, in cooperation with the U.S. Department of Agriculture, Robert E. Whitson, Director of Oklahoma Cooperative Extension Service, Oklahoma State University, Stillwater, Oklahoma. This publication is printed and issued by Oklahoma State University as authorized by the Vice President, Dean, and Director of the Division of Agricultural Sciences and Natural.