



# Pest e-alerts



Entomology and Plant Pathology, Oklahoma State University  
127 Noble Research Center, Stillwater, OK74078  
405.744.5527

Vol. 12, No. 9

<http://entopl.okstate.edu/Pddl/>

Apr 10, 2013

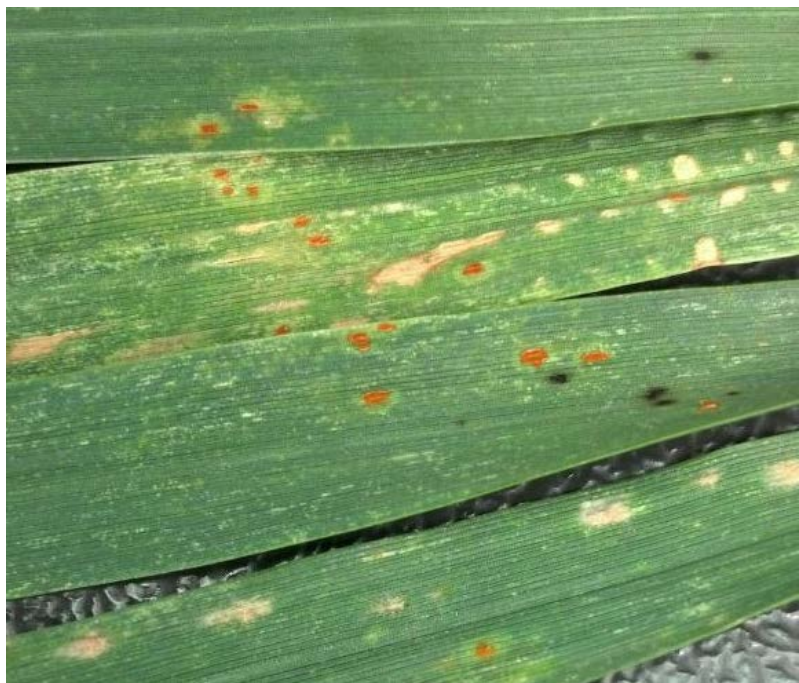
## Wheat Disease Update

Bob Hunger, Extension Wheat Pathologist



A couple of “firsts” occurred this week. Mark Gregory (Southwest Area Extension Agronomist) reported the first leaf rust in Oklahoma for 2013 (Figure 1). It was on Overley near Devol, OK, which is near the Red River north of Wichita Falls, TX. The wheat was at GS 10-10.1 (boot to heads just emerging), and was in a field with quite a bit of damage from the freeze. From Mark’s description, the prevalence was fairly low as he indicated he had to look around quite a bit to find rust pustules. Along these lines, Dr. Jeff Edwards and I recently updated “Foliar Fungicides and Wheat Production in Oklahoma – April, 2013” (OSU Current Report CR-7668). This publication provides answers to many of the common questions typically asked about wheat foliar fungicides and provides a table listing the most common fungicides available to control wheat foliar diseases.

**Fig 1.** Leaf rust and powdery mildew on Overley near Devol OK, 4-8-2013. Photo Mark Gregory.



We also had our first confirmed sample of wheat streak mosaic (Figure 2) in Fuller wheat from southwestern OK (near Sentinel) in Washita County. This was in a field that had been sprayed for volunteer wheat last fall. Perhaps sufficient time was not allowed to elapse between the spraying of the volunteer and the planting of the wheat in the fall – remember, two weeks should be allowed between the complete death (not the spraying) of volunteer wheat and the emergence of seedling wheat in order to kill the wheat curl mites that transmit Wheat streak mosaic virus.



Next week I'll be looking around more of the state for diseases – thankfully it is too rainy today!!!!

**Fig 2.** Wheat streak mosaic in Fuller wheat from southwestern OK (near Sentinel) in Washita County.

---

**Dr. Richard Grantham**  
**Director, Plant Disease and Insect Diagnostic Laboratory**

Oklahoma State University, in compliance with Title VI and VII of the Civil Rights Act of 1964, Executive Order 11246 as amended, Title IX of the Education Amendments of 1972, Americans with Disabilities Act of 1990, and other federal laws and regulations, does not discriminate on the basis of race, color, national origin, gender, age, religion, disability, or status as a veteran in any of its policies, practices or procedures. This includes but is not limited to admissions, employment, financial aid, and educational services.

Issued in furtherance of Cooperative Extension work, acts of May 8 and June 30, 1914, in cooperation with the U.S. Department of Agriculture, Robert E. Whitson, Director of Oklahoma Cooperative Extension Service, Oklahoma State University, Stillwater, Oklahoma. This publication is printed and issued by Oklahoma State University as authorized by the Vice President, Dean, and Director of the Division of Agricultural Sciences and Natural.