

August, 1955

# THE BULLETIN

*of the Tulsa County Medical Society*

## ***IN THIS ISSUE***

Tulsa County Medical Society Membership  
Reaches Record High Of 334 Physicians



Tulsa Medical Directory



Tulsa County Heart Association Reports  
Excellent Program Of Achievement

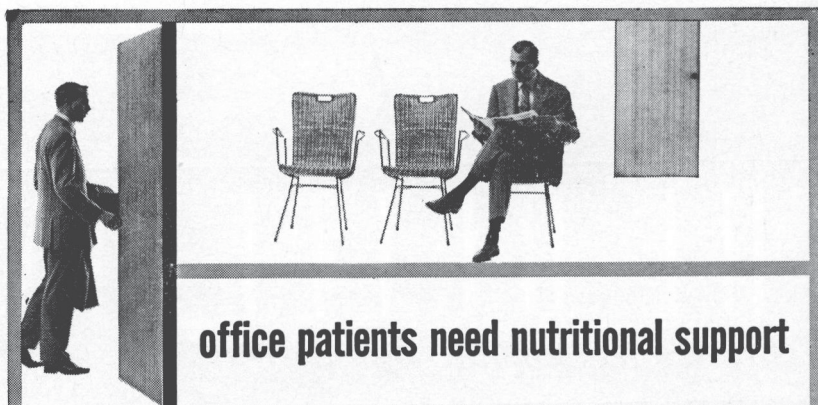


The Medical Library

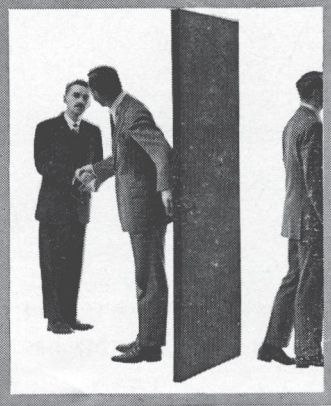
Vol. 21



No. 8



**office patients need nutritional support**



*and Theragran gives  
therapeutic results*

# THERAGRAN

THERAPEUTIC FORMULA VITAMIN CAPSULES SQUIBB

Each Theragran Capsule supplies:

- Vitamin A .... 25,000 U.S.P. Units  
(synthetic)
  - Vitamin D .... 1,000 U.S.P. Units
  - Thiamine Mononitrate.... 10 mg.
  - Riboflavin ..... 10 mg.
  - Niacinamide ..... 150 mg.
  - Ascorbic Acid ..... 150 mg.
- 1 or more capsules daily  
bottles of 30, 100 and 1000.

\*THERAGRAN<sup>®</sup> IS A SQUIBB TRADEMARK

**SQUIBB**

# GETMAN'S

ROY R. GETMAN, Founder



**Store Number One**  
**MAIN & 6TH**  
**Telephone DI 3-6171**

**Store Number Two**  
**4606 EAST 11TH**  
**Telephone WE 9-5233**

*As Near To You*  
*As Your Telephone*

## VACATION TIME

Brings its woes, too! Getman's has just the thing for that sunburn or those insect bites. The traveller will find our small first aid kit just the thing for his car. Our friendly personnel invites you to visit our air conditioned stores for your vacation health needs. And as always—the finest in prescriptions.

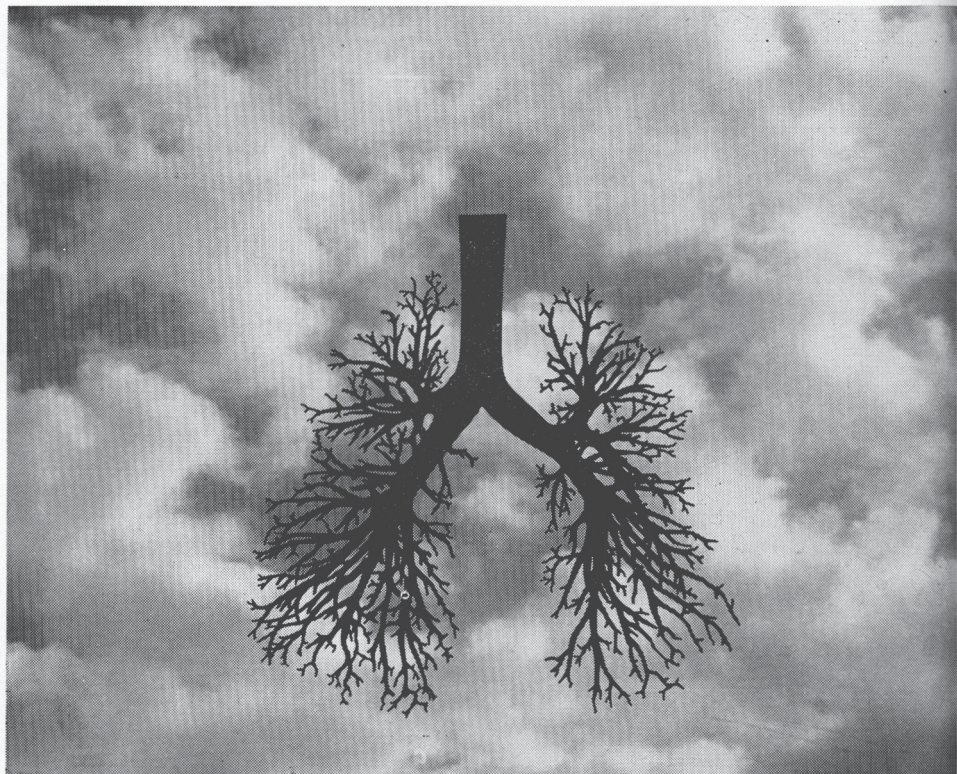
FREE DELIVERY NIGHT AND DAY.

WE GIVE S & H GREEN STAMPS

Sponsors of the "Tell Me, Doctor" Radio Broadcasts at 5:15 P.M. each Monday through Friday, KTUL, prepared by The Oklahoma State Medical Association.

## With The Editor . . .

To our mind one of the best pieces of public relations the medical profession enjoys is the weekly television series "Medic", seen each Monday evening at 7:00 P.M. over NBC-TV's Tulsa affiliate, KVOO-TV . . . It does more for the medical profession in thirty minutes than most of the other PR projects do in a year . . . Intensely dramatic and absorbing, "Medic" reflects the tremendous progress of medicine in diagnosis and treatment . . . A bow to the Los Angeles County Medical Society for its technical supervision of the series . . . Welcome to Don Blair, new Associate Executive Secretary of the Oklahoma State Medical Association . . . Recently discharged as an Army officer in Korea, Don succeeds John K. Hart in the Post . . . Hart resigned to become Executive Secretary of the American Academy of Orthopedics . . . With the death of Dr. Bunn Harris last month, the town of Jenks is without a doctor . . . A citizens committee is very anxious to secure a replacement and can guarantee plenty of help in setting up an office . . . Dr. Harris' old quarters are still available . . . With Jenks within hollerin' distance of Tulsa, it should be a good opportunity for someone . . . The Bulletin can use some help in the preparation of its monthly calendar of events . . . If your hospital or group schedules a meeting or changes the date or time of regularly scheduled meetings, please let us know by the 15th of each month . . . Just call Jack Spears, Executive Secretary, at Gibson 7-8161 . . . We would like to have the calendar as complete as possible . . . Surprising how many Tulsa doctors cut it out and place it under the glass of their desk for handy reference . . . And don't be bashful about calling in personal items about yourself . . . The Bulletin wants news about your activities—new babies, new offices, membership in organizations, speaking engagements, Board certifications, vacations, etc. . . . Did you know the 1954 graduating classes of American medical schools totalled 6,861, an increase or more than 1,300 over the previous year?



Combines four potent bronchodilators . . . Acts instantly to relieve "air hunger" in patients with asthma, status asthmaticus, and emphysema.

In Solution

## A E R O L O N E   C O M P O U N D

(CYCLOPENTAMINE AND ALUDRINE COMPOUND, LILLY)

unusual effectiveness is achieved by taking advantage of the additive dilating action of each component. Side-effects are minimal.

May be used by patient as often as necessary.

Administered by means of a nebulizer. Supplied in 1-oz. bottles.

*Each 10 cc. provide:*

'Clopane Hydrochloride' (Cyclopentamine Hydrochloride, Lilly) . . . . .	50 mg.
Aludrine Hydrochloride . . . . .	25 mg.
Procaine Hydrochloride . . . . .	20 mg.
Propylene Glycol . . . . .	8 cc.
Distilled Water, q.s.	

QUALITY / RESEARCH / INTEGRITY

ELI LILLY AND COMPANY • INDIANAPOLIS 6, INDIANA, U. S. A.

525007

# THE BULLETIN

OF THE

## TULSA COUNTY MEDICAL SOCIETY

Frank J. Nelson, M.D., *President*F. L. Flack, M.D., *President-Elect*Hugh C. Graham, M.D., *Vice-President*R. M. Wadsworth, M.D., *Secy.-Treasurer*Jack Spears, *Executive Secretary*

Vol. 21

TULSA, OKLAHOMA, AUGUST, 1955

No. 8

## HEART ASSOCIATION PROGRAM PRAISED

**Tulsa Internist Named to Head Tulsa County Heart Association For 1955-56. Total of 1,752 Patients Seen in Local Heart Clinics.**

Dr. Ceylon S. Lewis, Tulsa internist and cardiologist, was named President of the Tulsa County Heart Association for 1955-56 at the annual meeting of the organization last June 28th. He succeeds Dr. James C. Peters in the office.

Other officers selected by the group include Mr. Charles L. Follansbee, Vice-President; Dr. I. H. Nelson, Secretary; Mr. Ernest L. Stucker, Treasurer; and Dr. Terrell Covington, Jr., Chairman of the Executive Committee.

The Tulsa County Heart Association also:

1. Approved the allocation of \$1,200 annually to the case-finding program in heart diseases being conducted by the Tulsa County Public Health Association's mobile x-ray unit.

2. Paid a special tribute to Dr. Russell C. Pigford, retired Tulsa cardiologist, for his past and present services to the organization.

3. Approved the continued participation of the Heart Association in the Tulsa County Medical Society's Annual Founders Day Clinic. The 1955 session of the Clinic has been scheduled for November 9-10.

4. Approved in principle a work classification unit designed to assist cardiac patients in determining their work capa-

city.

5. Transferred to the Tulsa City Schools Health Department the school heart diagnostic clinics conducted by the Association in the past.

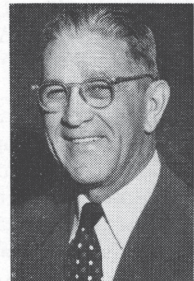
The Association's accolade for Dr. Pigford noted his efforts in organizing the first heart clinic in Tulsa in 1930 under the auspices of the Tulsa County Public Health Association. He was a charter member of the Tulsa County Heart Association in 1948 and served on its Scientific Council. In 1950 he was named Executive Vice-President. Dr. Pigford also assisted in organizing the Oklahoma State Heart Association and in affiliating the local and state groups with the American Heart Association. In 1953 he prepared and directed an unusual series of health and medical television programs sponsored by the Association. He has served on numerous committees of the group. Dr. Pigford is a former President of the Tulsa County Medical Society and prior to his retirement was active in local and state medical circles.

A review of the 1954-55 Annual Report of the Tulsa County Heart Association indicates the following accomplishments for the last year:

1. A total of 1,752 patients have been seen by volunteer physicians in eleven



Dr. Lewis



Dr. Pigford

heart clinics to which the Association lends support. This included 558 patients in general cardiology, 91 in congenital hearts, and 245 in rheumatic fever seen at the Association's Out-Patient Heart Clinic at Hillcrest Medical Center.

2. A total of 92 enlarged hearts were found through the Association's x-ray case-finding program.

3. A total of 1,073 home nursing visits to heart patients were recorded by the Community Public Health Nursing Service.

4. Instruments for cardiac heart surgery were purchased for use at Tulsa's major hospitals at a cost of approximately \$900.00.

5. An appropriation of \$1,000 for purchase of a Cardioscope at St. John's

Hospital was made.

6. A health education secretary was added to the staff of the Association in June, 1954, to handle public relations and health education.

7. A contribution of \$5,556.46 was made by the Tulsa County Heart Association to the American Heart Association for use in cardiac research.

These and other accomplishments of the Association are described in detail in the 1954-55 Annual Report, copies of which are available in the Medical Library.

Physicians named to the Board of Directors of the Tulsa County Heart Association for the coming year include Dr. Walter E. Brown, Dr. William S. Jacobs, Dr. Marion K. Ledbetter, Dr. I. H. Nelson, Dr. Emil E. Palik, Dr. Lucien M. Pascucci, Dr. Robert M. Shepard, Jr., Dr. Homer A. Ruprecht, Dr. R. C. Pigford, Dr. Albert W. Wallace, Dr. Henry A. Brocksmith, Dr. Terrell Covington, Jr., Dr. Gerald E. Cronk, Dr. Emil E. Palik, Dr. Robert D. Grubb, Dr. Ceylon S. Lewis, Jr., Dr. Frank J. Nelson, Dr. William J. Osher, Dr. James C. Peters, Dr. B. W. Ward, Dr. Paul T. Strong, Dr. Felix R. Park, Dr. Philip M. Schreck, Dr. Robert G. Tompkins, and Dr. Safety R. First.

### BUNN HARRIS, M.D.

1888 - 1955

Dr. Bunn Harris, 66, veteran Jenks physician, died July 5, 1955, at his home. He had been in poor health for the past few years.

Born in Barling, Arkansas, in 1888, Dr. Harris was a graduate of the University of Arkansas School of Medicine, Class of 1913. He interned at Little Rock City Hospital and subsequently served a one-year residency in Obstetrics and Gynecology at the same institution. He practiced briefly at Fort Smith, Arkansas, and for two years at Jenny Lind, Arkansas. During World War I he served as a Captain in the Army Medical Corps. Since 1919 he had been in practice at Jenks.

Dr. Harris was a Life Member of the Tulsa County Medical Society and its component organizations and a member of the Jenks Lions Club. For many years he was active in Oklahoma Masonic circles.

Survivors include a daughter and one sister. Dr. Harris' wife died last March 22nd. A son was killed in Ceylon during World War II. Services were held July 7th with interment at Rose Hill Cemetery.

DR. W. DEAN HIDY has moved to Little Rock, Arkansas, where he will take two years of postgraduate instruction and resident training at the University of Arkansas School of Medicine and Hospitals.

DR. WILLIAM R. McSHANE will be married on August 8, 1955, to Miss Margaret Wise of Tulsa.

DR. JAMES W. ROGERS has been seriously ill at St. John's Hospital.

DR. A. T. KORNBLEE has taken attractive new office quarters at 107 Utica Square Medical Center.

DR. J. WARNER WEBB has resigned as Medical Director of American Airlines and will enter private practice at Paducah, Kentucky.

DR. GEORGE R. KRIETMEYER has taken new professional quarters at 105 Utica Square Medical Center for the practice of Pediatrics.

# OFFICIAL MEMBERSHIP ROSTER TULSA COUNTY MEDICAL SOCIETY

## ACTIVE MEMBERS

Doctor	Address	Telephone
Adams, George M., 1419 E. 15th (Anes).....		GI 7-9637
Akins, Jack O., 1102 Medical Arts Bldg. (Urol).....		LU 5-5646
Allen, Clifford W., Jr., 1635 E. 15th (Neurosurgery).....		CH 2-0401
Alston, William C., Jr., 811 Medical Arts Bldg. (Surg).....		DI 3-4363
Andelman, Sumner Yale, 320 Utica Square Medical Center (Int Med-Arth).....		RI 7-0173
Anderson, Robert L., Ranch Acres Medical Center, 3102 S. Harvard (Th Surg).....		RI 7-4428
Armstrong, O. C., 902 Medical Arts Bldg.....		GI 7-4388
Atchley, Roger Q., 507 Medical Arts Bldg. (Surg).....		CH 2-2239
Atkins, Paul N., 1011 Medical Arts Bldg.....		LU 3-5295
Atkins, Paul N., Jr., 210 Braniff Bldg. (Surg).....		LU 2-5159
Bailey, Byron L., 317 Utica Square Medical Center (Int Med).....		RI 2-5241
Barham, J. H., 311 Daniel Bldg.....		DI 3-9456
Bate, Charles J., 352½ N. Greenwood (Surg).....		LU 7-2887
Benton, Paul C., Children's Medical Center, 4900 S. Lewis (Child Psy).....		RI 7-7543
Benzing, William M., Jr., 302 Medical Arts Bldg. (Rad).....		DI 3-3044
Berg, Milton L., 3505 S. Peoria.....		RI 7-7529
Bischoff, Paul A., Springer Clinic, 604 S. Cincinnati (Ob-Gyn).....		LU 7-6621
Black, Harold J., 502 Medical Arts Bldg.....		GI 7-9332
Blankenship, John F., 507 Medical Arts Bldg.....		CH 2-2239
Also: 6423 E. Archer.....		TE 8-0162
Blocksom, Berget H., 517 Medical Arts Bldg. (Urol).....		LU 4-1888
Boone, Wilmot B., 4117 S. 26th West Avenue.....		HI 6-6249
Boyd, Hugh L., 207 Braniff Bldg.....		CH 2-0228
Boyer, William F., Springer Clinic, 604 S. Cincinnati (Urol).....		LU 7-6621
Bradfield, Samuel J., 1547 S. Lewis (Surg).....		WE 9-1991
Brawner, Donald L., 406 Medical Arts Bldg. (Surg).....		LU 7-2022
Brighton, Charles E., Springer Clinic, 604 S. Cincinnati (Orth).....		LU 7-6621
Brocksmith, Henry A., Ranch Acres Medical Center, 3102 S. Harvard (Int Med).....		RI 2-9975
Brogden, James C., 801 Medical Arts Bldg. (Surg).....		CH 2-2516
Brown, Manuel, 1619 E. 15th (Allergy).....		LU 4-5552
Brown, Walter E., Glass-Nelson Clinic, 2020 S. Xanthus (Rad).....		RI 2-3341
Browne, Henry S., 615 Medical Arts Bldg. (Urol).....		CH 2-4515
Brunfield, Thomas J., 6626 E. King.....		TE 5-1509
Bryan, William J., 801 Medical Arts Bldg. (Int Med).....		GI 7-1011
Buchan, William H., 207 Braniff Bldg. (Surg).....		DI 3-7817
Bungardt, Alfred H., 1010 Medical Arts Bldg. (Orth).....		LU 4-1685
Burns, Dixon N., 306 Utica Square Medical Center (Ob-Gyn).....		RI 2-1303
Caldwell, Charles L., 115 E. 18th.....		GI 7-5651
Capehart, John D., 814-A N. Osage Drive.....		LU 4-7767
Capehart, Maurice P., 1635 E. 15th (Neurosurgery).....		CH 2-0401
Capehart, Samuel A., 543 E. Apache.....		CH 2-7219
Carney, Andre B., Tulsa Clinic, 915 S. Cincinnati (Surg).....		GI 7-0177
Cash, Murray M., 1008 Medical Arts Bldg. (Path).....		DI 3-6004
Also: 207 Utica Square Medical Center.....		RI 2-6710
Childers, Emil M., 302 Utica Square Medical Center (Surg).....		RI 2-8854
Also: 201 E. Broadway, Sand Springs, Okla.....		S.S. 100
Clements, Donald G., B-7 Medical Arts Bldg. (Rad).....		GI 7-1574
Cohen, Eugene S., 1101 Medical Arts Bldg. (Ob-Gyn).....		RI 7-7703
Also: 1239 E. 36th Pl.....		RI 7-7703
Cohenour, Howard M., 1104 Medical Arts Bldg. (Urol).....		DI 3-9922
Conrad, Betty L., Tulsa County Red Cross Blood Center, 602 S. Cheyenne (Hem).....		LU 4-4281
Covington, Terrell, Jr., Ranch Acres Medical Center, 3102 S. Harvard (Int Med).....		RI 2-4946
Craig, Paul E., 2732 E. 15th (Surg).....		WE 2-2238
Crane, Donald V., 1116 Medical Arts Bldg. (Oph).....		GI 7-4189
Crawford, William S., Carter Oil Company, 618 Nat'l Bank of Tulsa Bldg. (Ind).....		CH 2-6101
Cronk, Gerald E., Glass-Nelson Clinic, 2020 S. Xanthus (Int Med).....		RI 2-3341

Doctor	Address	Telephone
Cronk, Robert T.,	Glass-Nelson Clinic, 2020 S. Xanthus (Int Med).....	RI 2-3341
✓ Dague, John C.,	203 Utica Square Medical Center (Orth).....	RI 2-2416
Daily, Raymond E.,	Bixby, Okla.....	
Davis, Arthur H.,	710 Medical Arts Bldg. (EENT).....	CH 2-3045
Davis, Thomas H.,	Glass-Nelson Clinic, 2020 S. Xanthus (Surg).....	RI 2-3341
Dean, W. A.,	610 Medical Arts Bldg. (Ob-Gyn).....	DI 3-3900
Devine, J. C.,	6336 E. Admiral Pl.....	TE 5-3737
✓ Dillman, Robert E.,	209 Medical Arts Bldg. (Ob-Gyn).....	LU 7-2010
Docter, Charles W.,	1916 S. Utica (Orth).....	RI 2-2419
Dodd, Nevin W.,	1307 E. 35th Pl.....	RI 7-1956
Dolan, Gladys K.,	2532 S. Harvard Court.....	WE 2-1492
Donovan, Mark H.,	300 Utica Square Medical Center (Ped).....	RI 2-6730
Eads, Charles H.,	1547 S. Lewis (Ob-Gyn).....	WE 9-5085
Eddington, Allen B.,	1419 E. 15th.....	GI 7-9637
Edwards, D. L.,	311 Utica Square Medical Center (Oph).....	RI 2-3311
Etherton, Monte C.,	2423 E. Admiral.....	WE 2-1568
Evans, Hugh J.,	215 Medical Arts Bldg. (EENT).....	CH 2-4268
Ewell, William C.,	1211 S. Harvard (Ob-Gyn).....	WE 9-9466
Fair, Thomas H.,	Springer Clinic, 604 S. Cincinnati (Int Med).....	LU 7-6621
First, Safety R.,	1011 Medical Arts Bldg. (Card).....	LU 4-7545
Flack, F. L.,	Ranch Acres Medical Center, 3102 S. Harvard (Surg).....	RI 2-3319
Flanigin, H. F., Jr.,	1635 E. 15th (Neurosurgery).....	CH 2-0401
Ford, H. W.,	Tulsa Clinic, 915 S. Cincinnati (Int Med).....	GI 7-0177
Forry, Willis W.,	Bixby, Okla.....	
Franklin, Onis,	Franklin Clinic & Hospital, Broken Arrow, Okla.....	
Franklin, Samuel E.,	1619 E. 15th (Surg).....	LU 3-2108
Frieze, Harold W.,	Skiatook, Okla.....	
Fulcher, Joseph,	1151 S. Peoria (Urol).....	CH 2-7196
Funk, Robert E.,	Ranch Acres Medical Center, 3102 S. Harvard (Int Med).....	RI 2-3319
Gaddis, John W.,	1530 S. Peoria (Int Med).....	GI 7-5978
Gaddis, N. C.,	1530 S. Peoria (Int Med).....	GI 7-5978
Galindo, D. L.,	St. John's Hospital, 1923 S. Utica (Path).....	RI 2-3361
	Also: 316 Utica Square Medical Center.....	RI 7-0596
Garrett, D. L.,	701 Medical Arts Bldg. (Surg).....	DI 3-3185
Gentry, E. Lee,	908 Medical Arts Bldg.....	CH 2-8233
Glass, Fred A.,	Glass-Nelson Clinic, 2020 S. Xanthus (Surg).....	RI 2-3341
Goddard, Roy K., Jr.,	Skiatook, Okla.....	
Goen, Rayburne W.,	305 Braniff Bldg. (Int Med).....	LU 5-5559
Goldberg, Jed E.,	212 Utica Square Medical Center (Ob-Gyn).....	RI 2-8662
Goodman, Samuel,	603 Medical Arts Bldg. (Int Med).....	GI 7-3141
Gorrell, Ben F.,	1109 Medical Arts Bldg. (EENT).....	LU 3-5378
Gorrell, John F.,	1109 Medical Arts Bldg. (EENT).....	LU 3-5378
Graham, Hugh C.,	326 Utica Square Medical Center (Ped).....	RI 7-5013
Graham, Mary V.,	1306 E. 35th (Ped).....	RI 2-1171
✓ Gray, John F., Jr.,	208 Utica Square Medical Center (Psy).....	RI 2-6016
Gross, Worth M.,	212 Medical Arts Bldg. (Orth).....	CH 2-3412
Grubb, Robert D.,	1306 E. 35th (Int Med).....	RI 7-0220
Guild, Carl H., Jr.,	1419 E. 15th (Anes).....	GI 7-9637
Hale, Arthur E.,	Glass-Nelson Clinic, 2020 S. Xanthus (Int Med).....	RI 2-3341
Haney, T. Paul,	Tulsa City-County Health Department, 521 N. Boulder (Pub H).....	LU 2-4351
Hardman, Thomas J.,	107 Utica Square Medical Center (Surg).....	RI 2-6004
Hardy, Homer D., Jr.,	4116 S. 25th West Avenue.....	HI 6-7212
Hart, Marshall O.,	1228 S. Boulder.....	LU 2-5904
Hartig, Clemens M.,	309 Utica Square Medical Center (Surg).....	RI 7-1407
Hays, Luvern,	2447 E. 27th Pl. (Ped).....	RI 2-3788
Heerwagen, Paul K., Jr.,	Collinsville, Okla.....	
Henderson, William N.,	1415 E. 15th (Ob-Gyn).....	LU 4-7797
Henley, Marvin D.,	911 Medical Arts Bldg. (EENT).....	CH 2-6358
Henry, Gifford H.,	Ranch Acres Medical Center, 3102 S. Harvard (Surg).....	RI 2-2793
Hill, O. L.,	Tulsa Clinic, 915 S. Cincinnati.....	GI 7-0177
Holland, Charles D.,	Broken Arrow, Okla.....	
Hoover, Wilkie D.,	201 Stanolind Bldg. (Surg).....	LU 2-5143
Horowitz, Leon,	1916 S. Utica (Ped).....	RI 2-2473
Hotz, Carl J.,	Springer Clinic, 604 S. Cincinnati (Surg).....	LU 7-6621
huber, Walter A.,	205 Medical Arts Bldg. (Oph).....	LU 7-2416



Doctor	Address	Telephone
Hudson, David V.,	Tulsa City-County Health Department, 521 N. Boulder (Pub H.)	LU 2-4351
Hudson, Margaret G.,	1759 S. Victor (Pub H.)	RI 7-4846
Humphrey, B. H.,	Sperry, Okla.	
Hyatt, Emry G.,	Springer Clinic, 604 S. Cincinnati (Int Med)	LU 7-6621
Ihrig, H. Kenneth,	2010 S. Utica (Anes)	RI 7-4268
Imler, Robert L., Jr.,	107 Utica Square Medical Center (Neurosurgery)	RI 7-4785
Jacobs, William S.,	Ranch Acres Medical Center, 3102 S. Harvard (Int Med)	RI 2-2988
Johnson, E. O.,	209 Medical Arts Bldg. (Ob-Gyn)	LU 7-2010
Johnson, Maxwell A.,	517 Medical Arts Bldg. (Urol)	LU 3-5781
Johnson, R. Chadwick,	201 N. Lincoln, Sand Springs, Okla.	S.S. 102
Johnson, Robert Hall,	Glass-Nelson Clinic, 2020 S. Xanthus (Orth)	RI 2-3341
Jones, Craig S.,	Tulsa Clinic, 915 S. Cincinnati (Int Med)	GI 7-0177
Kelley, James W.,	204 Utica Square Medical Center (Plastic Surg)	RI 2-6496
Kemmerly, H. P.,	1419 E. 15th (Anes)	GI 7-9637
Kerekes, Ernest S.,	St. John's Hospital, 1923 S. Utica (Rad)	RI 2-3361
Also:	100 Utica Square Medical Center	RI 2-4728
Ketchum, Hail,	202 Utica Square Medical Center (Ob-Gyn)	RI 7-7548
Kornblee, A. T.,	106 Utica Square Medical Center (Derm)	RI 7-5808
Kramer, Allen C.,	1547 S. Lewis	MA 6-4029
Krietmeyer, George R.,	105 Utica Square Medical Center (Ped)	RI 7-0691
Larrabee, Walter S.,	411 Medical Arts Bldg. (Rad)	GI 7-3111
Layton, O. E.,	Collinsville, Okla.	
Ledbetter, Marion K.,	1453 S. Quaker (Ped)	DI 3-4332
Lee, J. K.,	Ranch Acres Medical Center, 3102 S. Harvard (Int Med)	RI 2-8190
Lee, Otis S.,	311 Utica Square Medical Center (Oph)	RI 2-3311
Leibovitz, Martin,	812 Medical Arts Bldg. (Thoracic Surg)	DI 3-8722
Lewis, Ceylon S., Jr.,	501 Medical Arts Bldg. (Int Med)	LU 4-2778
Lhevine, Dave B.,	B-7 Medical Arts Bldg. (Rad)	GI 7-1574
Lindstrom, W. Carl,	202 Utica Square Medical Center (Ob-Gyn)	RI 7-7548
Loney, William R. R.,	304 Medical Arts Bldg. (Ob-Gyn)	GI 7-9023
Lowbeer, Leo,	Hillcrest Medical Center, 1653 E. 12th (Path)	LU 4-1351
Lowe, James O.,	322 Thompson Bldg. (Surg)	CH 2-6462
Lubin, Emanuel N.,	416 Medical Arts Bldg. (Urol)	CH 2-7550
Lubin, Robert I.,	206 Utica Square Medical Center (Int Med)	RI 7-1589
Lucas, Vance,	509 Medical Arts Bldg. (Surg-Thoracic Surg)	LU 3-5513
Lusk, Earl M.,	Tulsa Clinic, 915 S. Cincinnati	GI 7-0177
Lyons, Mason R.,	Turley, Okla.	LU 5-5451
MacDonald, Daniel M.,	324 Utica Square Medical Center (Ob-Gyn)	RI 2-6197
Maddox, James T.,	Ranch Acres Medical Center, 3102 S. Harvard (Ob-Gyn)	RI 2-0711
Margolin, Berthe,	2739 E. 22nd (Anes)	RI 7-5433
Markland, James D.,	411 Medical Arts Bldg. (Allergy)	GI 7-3111
Martin, Ralph F.,	108 E. Broadway, Sand Springs, Okla.	S.S. 1260
Matt, John G.,	1106 Medical Arts Bldg. (Proc)	CH 2-1014
Mauritson, Donald F.,	St. John's Hospital, 1923 S. Utica (Rad)	RI 2-3361
Also:	100 Utica Square Medical Center	RI 2-4728
McDonald, John E.,	203 Utica Square Medical Center (Orth)	RI 2-2416
McDowell, Richard E.,	Perry Clinic, 222 E. 5th (Surg)	LU 5-5508
McDowell, Thomas A.,	313 Medical Arts Bldg. (Surg)	GI 7-1880
McGill, Ralph A.,	210 Utica Square Medical Center (Surg)	RI 2-2405
McGraw, Willard L.,	1332 S. Lewis	WE 9-3188
McGregor, Frank H.,	Ranch Acres Medical Center, 3102 S. Harvard (Surg)	
McShane, William R.,	215 Utica Square Medical Center (Ob-Gyn)	RI 7-0713
Meyers, William A.,	Douglas Aircraft Company, 2000 N. Memorial Dr. (Ind)	TE 8-3351
Michols, Raymond M.,	203 Utica Square Medical Center (Orth)	RI 2-2416
Miller, Elnora G.,	314 Braniff Bldg.	CH 2-8813
Miller, George H.,	406 Atlas Life Bldg. (Surg)	CH 2-6669
Miller, Loren V.,	Ranch Acres Medical Center, 3102 S. Harvard (Ped)	RI 2-9389
Mishler, Donald L.,	Springer Clinic, 604 S. Cincinnati (Plastic Surg)	LU 7-6621
Mitchell, Tom Hall,	Carter Oil Company, 618 Nat'l Bank of Tulsa Bdg. (Ind)	CH 2-6101
Moore, Edward L.,	318 Utica Square Medical Center (Surg)	RI 2-6545
Moore, Matthew B.,	322 Utica Square Medical Center (Ob-Gyn)	RI 7-0546
Morgan, Carl C., Jr.,	2010 S. Utica (Anes)	RI 7-4268
Mount, Houston F.,	Ranch Acres Medical Center, 3102 S. Harvard (Ob-Gyn)	RI 2-0711
Mulmed, Earl I.,	323 Utica Square Medical Center (Int Med)	RI 2-1931
Munding, Linus A.,	328 Utica Square Medical Center	RI 7-1900
Murdock, H. D.,	1011 Medical Arts Bldg. (Surg)	DI 3-6915

Doctor	Address	Telephone
Nathan, Robert E., 603 Medical Arts Bldg. (Int Med).....		GI 7-3141
Neal, James H., Tulsa City-County Health Department, 521 N. Boulder (Pub H).....		LU 2-4351
Neal, James H., Jr., Tulsa Clinic, 915 S. Cincinnati (Surg).....		GI 7-0177
Nelson, F. L., 2303 E. 3rd.....		DI 3-7873
Nelson, Frank J., Glass-Nelson Clinic, 2020 S. Xanthus (Int Med).....		RI 2-3341
Nelson, Iron H., 1107 Medical Arts Bldg. (Path).....		GI 7-1835
Also: 316 Utica Square Medical Center.....		RI 7-0596
Nelson, Marque O., 510 Medical Arts Bldg. (Derm).....		GI 7-3532
Nelson, Robert A., 609 Medical Arts Bldg. (Int Med).....		CH 2-8888
Newlin, W. H., Broken Arrow, Okla.....		
Nienhuis, Lester I., 107 Utica Square Medical Center (Surg).....		RI 2-6004
Northrup, Laurence C., 1307 S. Main (Ob-Gyn).....		DI 3-0151
Northrup, Robert A., 1307 S. Main (Ob-Gyn).....		DI 3-0151
O'Meilia, William J., 305 Braniff Bldg. (Int Med).....		LU 5-5559
Orr, Herbert S., 1645 E. 15th.....		LU 5-8135
Osher, William J., 608 Medical Arts Bldg. (Int Med).....		GI 7-9025
Ozment, Thomas L., Springer Clinic, 604 S. Cincinnati (Oph).....		LU 7-6621
Palik, Emil E., St. John's Hospital, 1923 S. Utica (Path).....		RI 2-3361
Also: 316 Utica Square Medical Center.....		RI 7-0596
Park, Felix R., 401 Medical Arts Bldg. (Int Med).....		CH 2-9589
Parmenter, Derric C., 1204 S. Cheyenne.....		CH 2-1053
Pascucci, Lucien M., St. John's Hospital, 1923 S. Utica (Rad).....		RI 2-3361
Also: 100 Utica Square Medical Center.....		RI 2-4728
Pavy, Chester A., 801 Medical Arts Bldg. (EENT).....		GI 7-3207
Peden, James C., 612 Medical Arts Bldg.....		CH 2-9018
Perry, Fred J., 214 Braniff Bldg.....		GI 7-1472
Perry, Hugh, Perry Clinic, 222 E. 5th (Surg).....		LU 5-5508
Perry, John C., 808 Medical Arts Bldg. (Surg).....		CH 2-7622
Perry, William B., 124½ N. Greenwood.....		CH 2-9003
Perryman, Robert G., Glass-Nelson Clinic, 2020 S. Xanthus (Surg).....		RI 2-3341
Peters, James C., Tulsa Clinic, 915 S. Cincinnati (Int Med).....		GI 7-0177
Peters, Myra A., 1006 Medical Arts Bldg. (Orth).....		GI 7-8883
Pollack, Simon, 103 Utica Square Medical Center (Rad).....		RI 2-4955
Porter, Horace H., 1419 E. 15th.....		GI 7-1272
Pratt, William C., Springer Clinic, 604 S. Cincinnati (Surg).....		LU 7-6621
Ratchford, Lawrence A., 2010 S. Utica (Anes).....		RI 7-4268
Ray, Raymond G., 3015 E. 15th.....		WE 9-6397
Reese, Killis C., 321 Utica Square Medical Center (Ped).....		RI 2-2447
Reynolds, Ernest W., 1307 S. Main.....		GI 7-4877
Rhine, J. Richard, Turley, Okla.....		LU 5-5451
Richardson, Jack L., 1916 S. Utica (Orth).....		RI 2-2419
Riley, Nolan C., Douglas Aircraft Company, 2000 N. Memorial Dr.....		TE 8-3351
Roberts, T. R., 217 Wright Bldg.....		LU 7-2833
Robertson, Gerald G., Bel-Aire Village, 1324 E. 50th.....		RI 2-2604
Also: Tulsa County Medical Clinic, 602 S. Cheyenne.....		LU 4-0471
Rubin, H. J., 1916 S. Utica (Ped).....		RI 2-2473
Rude, Evelyn M., 904 Medical Arts Bldg. (Ped).....		GI 7-9017
Ruprecht, Homer A., Springer Clinic, 604 S. Cincinnati (Int Med).....		LU 7-6621
Russell, G. R., Springer Clinic, 604 S. Cincinnati (Ped).....		LU 7-6621
Also: 205 Utica Square Medical Center.....		LU 7-6621
Salamy, Joseph, 2523 E. 11th.....		WE 9-9670
Sanger, Walter B., 211 Medical Arts Bldg. (Ob-Gyn).....		LU 5-9063
Schreck, Philip M., 202 Medical Arts Bldg. (Int Med).....		GI 7-8409
Searle, Maurice J., 512 Medical Arts Bldg. (Ped).....		LU 7-2901
Sethney, Walter F., 2828 E. 15th (Ped).....		WE 9-3987
Shackelford, Paul O., 311 Medical Arts Bldg. (Derm).....		CH 2-4872
Shapard, Edwin R., 324 Utica Square Medical Center (Ob-Gyn).....		RI 2-6197
Shapiro, David, 1129 E. 15th.....		CH 2-0178
Shepard, R. M., 306 Medical Arts Bldg. (Chest Diseases).....		GI 7-1821
Shepard, Robert M., Jr., 701 Medical Arts Bldg. (Surg).....		DI 3-3185
Shepard, S. Charlton, 314 Utica Square Medical Center (Int Med).....		RI 2-6559
Sherwood, R. G., 14 Court Arcade Bldg. (Ob-Gyn).....		DI 3-9849
Shipp, J. D., 708 Medical Arts Bldg. (Proc).....		GI 7-5670
Showman, W. A., 408 Medical Arts Bldg. (Derm).....		DI 3-7789
Sinclair, Franklin D., 306 Utica Square Medical Center (Ob-Gyn).....		RI 2-1063
Sippel, Mary Edna, 308 Utica Square Medical Center.....		RI 2-9586

Doctor	Address	Telephone
Sisler, Wade,	Mercy Hospital, 807 S. Elgin (Orth)	LU 4-4123
Smith, D. O.,	Springer Clinic, 604 S. Cincinnati (Int Med)	LU 7-6621
Smith, Earl E., Jr.,	Skiatook, Okla.	
Smith, Ruric N.,	1017 Medical Arts Bldg. (EENT)	DI 3-3208
Smith, Wendell L.,	Ranch Acres Medical Center, 3102 S. Harvard	RI 7-1397
Smith, William Orlando,	327 Utica Square Medical Center (EENT)	RI 2-2443
Spann, Joe L.,	210 Utica Square Medical Center (Surg)	RI 2-2405
Spann, Logan A.,	201 Braniff Building (Surg)	CH 2-0216
Spencer, Hugh B.,	2828 E. 15th (Ped)	WE 9-3987
Spencer, Robert W.,	312 Medical Arts Bldg. (Oph)	LU 3-2019
Springer, M. P.,	118 E. 6th	DI 3-6049
Stanley, M. V.,	1632 E. 15th	DI 3-8257
Steel, Marcella R.,	Springer Clinic, 604 S. Cincinnati (Anes)	LU 7-6621
Steele, Byron W., Jr.,	214 Utica Square Medical Center	RI 7-0768
Stevenson, James,	615 Medical Arts Bldg. (Derm)	LU 4-5562
Stewart, H. B.,	2010 S. Utica (Anes)	RI 7-4268
Stokes, E. Malcolm,	1415 E. 15th (Ob-Gyn)	GI 7-8657
Stokes, Lowell L.,	1321 S. Main	LU 4-2481
Stowell, Averill,	1151 S. Peoria (Neurosurgery)	LU 7-2161
Strong, Paul T.,	Glass-Nelson Clinic, 2020 S. Xanthus (Int Med)	RI 2-3341
Stuard, Charles G.,	217 Utica Square Medical Center (Oph)	RI 7-0289
Stuart, Frank A.,	203 Utica Square Medical Center (Orth)	RI 2-2416
Stuart, Leon H.,	411 Medical Arts Bldg. (Rad)	LU 4-5348
Stuart, Royal E.,	211 Utica Square Medical Center (Oto)	RI 7-6406
Summers, Clarence S.,	610 Daniel Bldg.	DI 3-9011
Sundgren, Vincel,	Springer Clinic, 604 S. Cincinnati (Int Med)	LU 7-6621
Swanson, Karl F.,	Springer Clinic, 604 S. Cincinnati (Urol)	LU 7-6621
Taylor, Thomas W.,	Tulsa Clinic, 915 S. Cincinnati	GI 7-0177
Thomas, Harlan,	902 Medical Arts Bldg.	LU 4-7925
Thomas, William F., Jr.,	215 Utica Square Medical Center (Ob-Gyn)	RI 7-0694
Thompson, James B.,	316 Medical Arts Bldg. (Surg)	DI 3-3318
Thompson, Lawrence E., Jr.,	1918 N. Oxford	TE 8-3721
Tompkins, Robert G.,	814 Medical Arts Bldg. (Int Med)	GI 7-3322
Turnbow, William R.,	3015 E. 15th	WE 9-6397
Turnbull, Theodore,	Perry Clinic, 222 E. 5th (Int Med)	LU 5-5508
Turner, Samuel R.,	1419 E. 15th (Anes)	GI 7-9637
Turner, Tom R.,	Springer Clinic, 604 S. Cincinnati (Psy)	LU 7-6621
Tyler, Joe E.,	Springer Clinic, 604 S. Cincinnati (Psy)	LU 7-6621
Underwood, David J.,	201 Utica Square Medical Center (Ped)	RI 2-6274
Underwood, F. L.,	506 Medical Arts Bldg.	LU 3-5514
Ungerman, Arnold H.,	404 Medical Arts Bldg. (Psy)	CH 2-3151
Ungerman, Milford S.,	404 Medical Arts Bldg. (Psy)	CH 2-3151
Vammen, Adolph N.,	1415 E. 15th (Ob-Gyn)	DI 3-7768
Wadsworth, R. M.,	1445 S. Quaker (Ped)	DI 3-4300
Walker, Dean C.,	Springer Clinic, 604 S. Cincinnati (Int Med)	LU 7-6621
Walker, William A.,	1215 S. Utica	WE 9-1259
Wallace, Albert W.,	Springer Clinic, 604 S. Cincinnati (Int Med)	LU 7-6621
Wappler, Frank A.,	2010 S. Utica (Anes)	RI 7-4268
Ward, Benjamin W.,	1916 S. Utica (Surg)	RI 2-4381
Waters, William A.,	6622 E. King	TE 8-7186
White, Eric M.,	1001 Medical Arts Bldg.	GI 7-3552
White, Harold A.,	701 Medical Arts Bldg. (Surg)	DI 3-3185
White, James W.,	Ranch Acres Medical Center, 3102 S. Harvard (Ped)	RI 2-4672
White, N. Stuart,	1001 Medical Arts Bldg. (Surg)	DI 3-1181
Wilbanks, Charles E.,	727 N. Lewis	WE 9-9386
Wiley, A. Ray,	812 Medical Arts Bldg. (Surg)	DI 3-0202
Williams, Richard G.,	1645 E. 15th	LU 5-8135
Williams, Theodore S.,	210 Medical Arts Bldg.	DI 3-8443
Wilner, Sol,	B-7 Medical Arts Bldg. (Rad)	GI 7-1574
Witcher, Robert B.,	909 Medical Arts Bldg.	CH 2-4673
Woodson, Fred E.,	908 Medical Arts Bldg. (Anes)	CH 2-8233
Wolff, Eugene G.,	2010 S. Utica (Anes)	RI 7-4268
Yandell, Hays R.,	Glass-Nelson Clinic, 2020 S. Xanthus (Surg)	RI 2-3341

**Doctor****Address****Telephone****LIFE AND HONORARY MEMBERS**

Brookshire, J. E., 312 Ritz Building.....	LU 3-5094
Calhoun, Charles E., 501 N. Lincoln, Sand Springs, Okla.....	S.S. 400
Childs, James W., 1616 S. Madison.....	LU 3-5420
Cook, W. Albert, The Mayo, 115 W. 5th.....	DI 3-0003
Coulter, Thomas B., 1346 S. Norfolk.....	CH 2-6825
Davis, George M., Sr., Bixby, Okla.....	
Grosshart, Paul L., 2203 E. 24th.....	RI 2-0562
Hall, Gilbert H., Rialto Bldg.....	DI 3-8316
Henderson, Finis W., Dunedin, Florida.....	
Hoke, Clarence C., 1615 Ames Street, Winfield, Kansas.....	
Hooper, Joel S., U. S. Veterans Administration Hospital, Muskogee, Okla.....	
LeMaster, D. W., Wayne, Okla.....	
Lhevine, Morris B., B-7 Medical Arts Bldg.....	GI 7-1574
Lynch, Thomas J., 2132 E. 24th.....	RI 7-4172
Murray, Silas, 211 Sunset Drive.....	CH 2-6079
Nesbitt, P. P., 1565 Swan Drive.....	DI 3-1730
Perry, Daniel L., 815 S. Gary.....	WE 9-8817
Pigford, R. C., 2427 E. 26th.....	RI 7-5568
Presson, L. C., 1948 N. Main.....	CH 2-3383
Reynolds, J. L., 505 Orpheum Bldg.....	LU 3-5659
Rhodes, Robert E. Lee, 2220 S. St. Louis.....	RI 2-2787
Rogers, James W., 1323 E. 27th.....	RI 2-2107
Trainer, William J., 680 N. Walnut, Wilmington, Ohio.....	

**MEMBERS ON POSTGRADUATE STUDY LEAVE**

Bryant, Raymond W., Ochsner Clinic Foundation, New Orleans, La.....	
Forrest, Herbert J., University of Kansas Medical Center, Kansas City, Kans.....	
Hidy, W. Dean, University of Arkansas School of Medicine, Little Rock, Ark.....	
McCrary, Robert F., City Hospital, St. Louis, Mo.....	
Reynolds, Ernest W., Jr., University Hospital, Ann Arbor, Mich.....	

**MEMBERS IN MILITARY SERVICE**

Echols, Raymond S., Lt. Cmdr., 3434 Granada Avenue, San Diego, Calif.....	
Kishner, Leonard L., Lt. (S.G.), 1945 Twenty-Ninth Street, San Diego, Calif.....	
Nicholas, Hugh B., Captain, U. S. Army Forces in Germany.....	

**A D D E N D A****KEY TO ABBREVIATIONS**

For purposes of information physicians who practice a major specialty are so indicated in this roster. This does not necessarily mean that the physician named limits himself exclusively to that specialty. The abbreviations used are as follows:

Anes—Anesthesiology	Ind—Industrial Medicine	Psy—Psychiatry
Arth—Arthritic Diseases	Int Med—Internal Medicine	Ped—Pediatrics
Card—Cardiology	Ob—Obstetrics	Proc—Proctology
Derm—Dermatology	Oph—Ophthalmology	Pub H—Public Health
EENT—Eye, Ear, Nose and Throat	Orth—Orthopedics	Rad—Radiology
Gyn—Gynecology	Oto—Otolaryngology	Surg—Surgery
Hem—Hematology	Path—Pathology	Th—Thoracic Surgery
		Urol—Urology

# TULSA MEDICAL DIRECTORY

## TULSA COUNTY MEDICAL SOCIETY

**Executive Offices:** B-9 Medical Arts Building, Tulsa. Telephone GI 7-8161. Mr. Jack Spears, Executive Secretary. Officers: Dr. Frank J. Nelson, President; Dr. F. L. Flack, President-Elect; Dr. Hugh C. Graham, Vice-President; Dr. R. M. Wadsworth, Secretary-Treasurer. Trustees: Dr. Thomas J. Hardman, Dr. Marshall O. Hart, Dr. G. R. Russell, Dr. Ralph A. McGill, and Dr. Wilkie D. Hoover. Hours: Monday through Friday, 8:30 A.M.-5:00 P.M.; Saturday, 8:30 A.M.-1:00 P.M.

**Medical Library:** 1203 Medical Arts Building, Tulsa. Telephone GI 7-1461. Miss Irma A. Beehler, Librarian. Hours: Monday through Friday, 9:00 A.M.-5:00 P.M., closed 1:00 P.M.-2:00 P.M.; Saturday, 9:00 A.M.-1:00 P.M. Evening hours: Tuesday, 6:00 P.M.-9:00 P.M., except June-September.

**Medical Credit Bureau:** B-9 Medical Arts Building, Tulsa. Telephone DI 3-6331. Mrs. Zelma Fink, Manager.

## OKLAHOMA STATE MEDICAL ASSOCIATION

**Executive Offices:** 1227 Classen Drive, Oklahoma City. Telephone RE 9-1648. Mr. R. H. Graham, Executive Secretary. Mr. Don Blair, Associate Executive Secretary. Officers: Dr. R. Q. Goodwin, Oklahoma City, President; Dr. H. M. McClure, Chickasha, President-Elect; Dr. George Ross, Enid, Vice-President; Dr. W. W. Rucks, Jr., Oklahoma City, Secretary-Treasurer.

**The Journal:** 1227 Classen Drive, Oklahoma City. Telephone RE 9-1648. Editorial Board: Dr. Ben H. Nicholson, Oklahoma City, Chairman; Dr. E. Eugene Rice, Shawnee; and Dr. John G. Matt, Tulsa. Editorial Assistant, Miss Mary Lou Crahan.

## AMERICAN MEDICAL ASSOCIATION

**Executive Offices:** 535 North Dearborn, Chicago, Illinois. Telephone WH 4-1500. Dr. George F. Lull, Secretary and General Manager.

**Washington Offices:** 1523 L Street, N.W., Washington, D. C. Telephone ST 3-8155. Dr. Frank E. Wilson, Director.

## TULSA HOSPITALS

**Byrne Memorial Hospital.** 1321 South Peoria, Tulsa. Telephone CH 2-4114. Mrs. B. L. Byrne, Administrator, Dr. Lowell L. Stokes, Chief of Staff.

**Children's Medical Center.** 4900 South Lewis, Tulsa. Telephone RI 7-7543. Dr. Paul C. Benton, Administrator. Dr. Walter E. Brown, Chief of Staff.

**Hillcrest Medical Center.** 1653 East 12th, Tulsa. Telephone LU 4-1351. Mr. Bryce J. Twitty, Administrator. Dr. George M. Adams, Chief of Staff. Dr. Safety R. First, Vice Chief of Staff. Dr. Henry A. Brocksmith, Secretary-Treasurer, Staff.

**Mercy Hospital.** 807 South Elgin, Tulsa. Telephone LU 4-4123. Dr. Wade Sisler, Owner.

**Moton Memorial Hospital.** 603 East Pine, Tulsa. Telephone GI 7-8430. Mr. J. T. A. West, Administrator.

**St. John's Hospital.** 1923 South Utica, Tulsa. Telephone RI 2-3361. Sister M. Magdalen, Superior. Mr. Kenneth Wallace, Business Manager. Dr. William Orlando Smith, Chief of Staff. Dr. Charles G. Stuard, Vice Chief of Staff. Dr. Hays R. Yandell, Secretary-Treasurer, Staff.

## HEALTH AND MEDICAL ORGANIZATIONS

**Alcoholics Anonymous.** 5½ East 3rd, Tulsa. Telephone CH 2-0205.

**American Cancer Society, Oklahoma Division.** Commerce Exchange Building, Oklahoma City. Telephone RE 9-2659. Mr. Clark Sudduth, Executive Director.

**American Red Cross, Tulsa County Chapter.** 602 South Cheyenne, Tulsa. Telephone LU 4-4281. Mr. Dale T. Bartlett, Executive Director.

**Arthritis and Rheumatism Foundation, Eastern Oklahoma Chapter.** Dr. Sumner Yale Andelman, Medical Director, 320 Utica Square Medical Center, Tulsa. Telephone RI 7-0173.

**Blue Cross-Blue Shield Plans of Oklahoma.** 1215 South Boulder, Tulsa. Telephone LU 5-9141. Mr. N. D. Helland, Executive Director.

**Child Welfare Service.** 602 South Cheyenne, Tulsa. Telephone GI 7-9540. Miss Kathryn Newbery, Director.

- Family and Childrens Service.** 602 South Cheyenne, Tulsa. Telephone DI 3-7171. Mr. Louis R. Turcotte, Director.
- Dairy Council of Tulsa.** 312 Wright Building, Tulsa. Telephone GI 7-8280. Miss Esther M. Musil, Director.
- Cerebral Palsy Association.** 4900 South Lewis, Tulsa. Telephone RI 7-7543.
- Muscular Dystrophy Association,** Eastern Oklahoma Chapter. Tulsa Hotel, Telephone CH 2-4125. Mr. Paine Williams, Executive Director.
- National Foundation For Infantile Paralysis, Tulsa County Chapter.** 2 East 15th, Tulsa. Telephone CH 2-0533. Mrs. Vivian Riggs, Executive Secretary.
- Oklahoma Commission For Crippled Children.** 1242 East 5th Pl., Tulsa. Telephone CH 2-2264. Mrs. Rue B. Witt, Executive Secretary.
- Oklahoma Medical Research Foundation.** 825 N. E. 13th Street, Oklahoma City. Telephone CE 2-9527. Mr. Hugh G. Payne, General Manager.
- Oklahoma State Board of Medical Examiners.** 813 Braniff Building, Oklahoma City. Telephone RE 6-6815. Dr. Clinton Gallaher, Secretary. Mrs. Lucy Haidek, Office Secretary. Address all communications concerning medical licensure to the Oklahoma City office.
- Oklahoma State Heart Association.** 825 N. W. 13th Street, Oklahoma City. Telephone CE 2-4997. Mrs. Maxine Turner, Executive Secretary.
- Oklahoma State Department of Health.** 3400 North Eastern, Oklahoma City. Telephone GA 7-2421. Dr. Grady F. Mathews, Commissioner.
- Planned Parenthood Association of Tulsa.** 1653 East 12th, Tulsa. Telephone LU 4-2124.
- St. John's Tumor Clinic.** 1923 South Utica, Tulsa. Telephone RI 7-6130.
- Tulsa Academy of General Practice.** 1228 South Boulder, Tulsa. Telephone LU 2-5904. Dr. Earl M. Lusk, President; Dr. Charles E. Wilbanks, Vice-President; Dr. Marshall O. Hart, Secretary-Treasurer; Dr. Wilkie D. Hoover, President-Elect.
- Tulsa City-County Health Department.** 521 North Boulder, Tulsa. Telephone LU 2-4351. Dr. T. Paul Haney, Superintendent.
- Tulsa City Schools Health Department.** 410 South Cincinnati, Tulsa. Telephone LU 4-6141. Dr. Marcella R. Steel, City Schools Physician.
- Tulsa Council of Social Agencies.** 602 South Cheyenne, Tulsa. Telephone DI 3-7171. Mr. Craig Berke, Executive Secretary. Health Division: Miss Lois Tubb, Secretary.
- Tulsa County Heart Association.** 808 South Peoria, Tulsa. Telephone LU 4-4238. Mrs. Odessa L. Winters, Executive Secretary. Dr. Ceylon S. Lewis, Jr., President.
- Tulsa County Medical Clinic.** 602 South Cheyenne, Tulsa. Telephone LU 4-0471. Dr. Gerald G. Robertson, Medical Director.
- Tulsa County Public Health Association.** 808 South Peoria, Tulsa. Telephone LU 4-4238. Mrs. Odessa L. Winters, Executive Secretary.
- Tulsa County Red Cross Blood Center.** 602 South Cheyenne, Tulsa. Telephone LU 4-4281. Mr. Robert Meredith, Administrator. Dr. Betty Conrad, Medical Director.
- Tulsa Internists Association.** Dr. Homer A. Ruprecht, President, 604 South Cincinnati, Tulsa. Telephone LU 7-6621.
- Tulsa Obstetrical & Gynecological Society.** Dr. Dixon N. Burns, President, 306 Utica Square Medical Center, Tulsa. Telephone RI 2-1303.
- University of Oklahoma School of Medicine.** 800 N. E. 13th Street, Oklahoma City. Telephone RE 6-1511. Dr. Mark R. Everett, Dean. Dr. Robert C. Lowe, Medical Director, University Hospitals.
- Variety Club Health Center.** 538 East Oklahoma, Tulsa. Telephone CH 2-9651.
- Vocational Rehabilitation Service.** 1242 East 5th Pl., Tulsa. Telephone CH 2-7209. Mr. Pat Eidschun, Counselor.

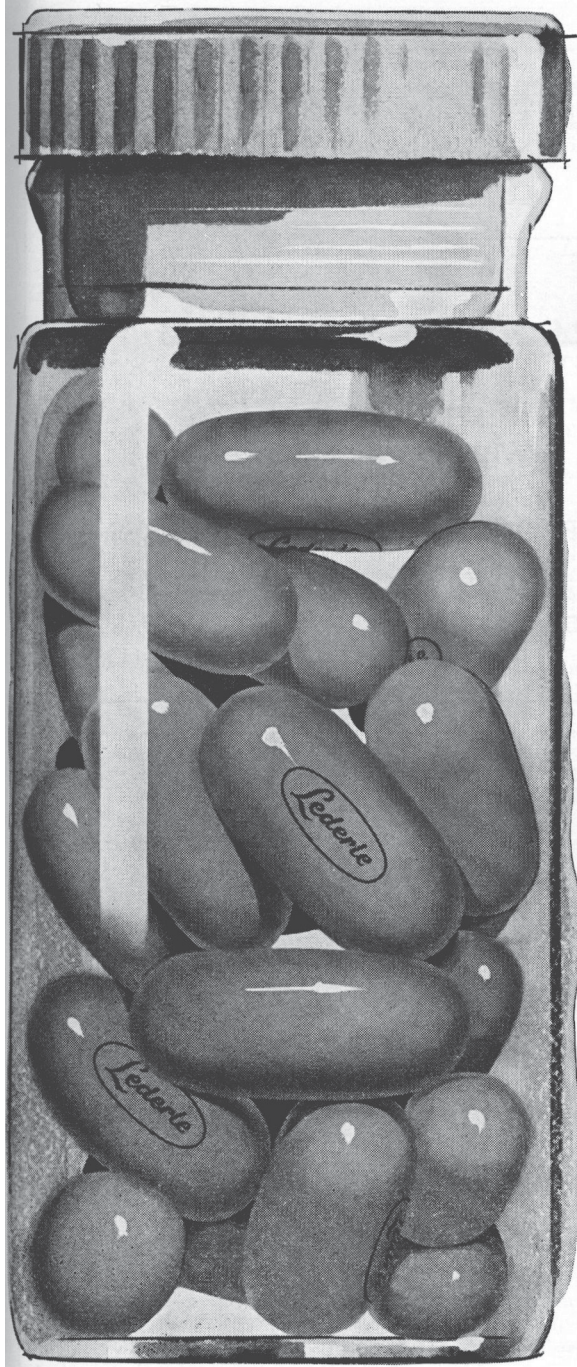
*Be Certain with Curtain*

## CURTAINS PRESCRIPTION LABORATORY

Sixth and Boulder

Phone GI 7-7116

*Across the Street North From Medical Arts Bldg.*



*most prescribed  
broad-spectrum  
antibiotic*

# ACHROMYCIN<sup>\*</sup>

Hydrochloride  
Tetracycline HCl Lederle

In less than two years, ACHROMYCIN has become the leader in its field.

Next time you find a broad-spectrum antibiotic is indicated, remember these facts about ACHROMYCIN: it is especially well tolerated by persons of all ages; it diffuses rapidly and provides prompt control of infection; it has proved effective against Gram-positive and Gram-negative bacteria, rickettsia, and certain viruses and protozoa; every gram is made in Lederle's own laboratories under rigid quality controls.

*Today's foremost antibiotic !*



LEDERLE LABORATORIES DIVISION

AMERICAN Cyanamid COMPANY

Pearl River, New York

<sup>\*</sup>REG. U.S. PAT. OFF.

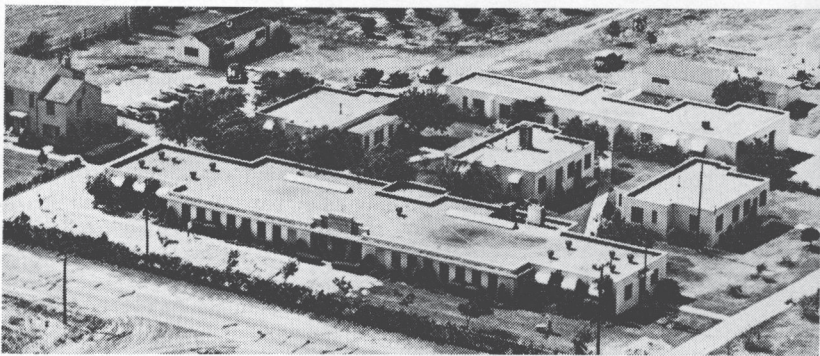
# T. ROY BARNES D R U G R Y

## *Prescription Specialists*

RECOMMEND  
WITH CONFIDENCE  
FOR  
PRESCRIPTIONS — SICKROOM SUPPLIES

Downtown  
603 S. BOULDER  
Phone CH 2-3118

Eastside  
44 N. HARVARD  
Phone MA 6-1111



## The COYNE CAMPBELL SANITARIUM

COYNE H. CAMPBELL, M.D.  
*Chief of Staff*

Post Office Box 6246

Oklahoma City 11, Okla.

Telephone GA. 7-2441

*Owned by the Oklahoma Medical Research Foundation*





# THE MEDICAL LIBRARY

Library of the Tulsa County  
Medical Society



Miss Irma A. Beehler, *Librarian*

## GIFTS OF THE MONTH:—

- American Diabetes Association.** Frederick M. Allen: Studies Concerning Glycosuria Diabetes. 1,179 pp., illustrated, bibliography, W. M. Leonard, Publisher, Boston, Massachusetts, 1913.
- American Medical Association.** Louis H. Bauer, M.D.: Private Enterprise or Government In Medicine? 201 pp., Charles C. Thomas, Publisher, Springfield, Illinois, 1948.
- Mrs. Felix T. Gastineau.** American Journal of Ophthalmology. Volumes 32-39, 1950-55; Archives of Ophthalmology. Volumes 43-53, 1950-55; Lancet. Volumes 65-66, 1954-55.
- Dr. John G. Matt.** Science. Volume 121, January-June, 1955.
- Multiple Dystrophy Associations in America, Inc.** Proceedings of the Third Medical Conference, New York, N. Y., October 8-9, 1954. (All of the material in this publication originally appeared in the American Journal of Physical Medicine, Volume 35, Number 1, February, 1955).
- National Institutes of Health, Bethesda, Maryland.** W. F. von Oettingen, M. D.: The Halogenated Aliphatic, Olefinic, Cyclic, Aromatic, and Aliphatic-Aromatic Hydrocarbons Including the Halogenated Insecticides, Their Toxicity and Potential Dangers. 430 pp., including references, U. S. Department of Health, Education and Welfare, Public Health Service, 1955.
- Oklahoma State Department of Health.** Public Health Statistics, State of Oklahoma, 1953, Part 2, Births and Deaths; Part 3, Accidental Deaths; Fourth Quarter, 1954, Births and Deaths, Marriages and Divorces.
- Tulsa County Medical Society.** Contributions to the Medical Library Endowment Fund in memory of Dr. Silas S. Mohrman, Dr. Felix T. Gastineau, and Dr. Bunn Harris.

## RECENT PUBLICATIONS BY MEMBERS OF THE TULSA COUNTY MEDICAL SOCIETY—:

- Dr. Nevin W. Dodd.** A book review of Drugs In Current Use, edited by Walter Modell, M.D., Associate Professor, Clinical Pharmacology, Cornell University Medical School. Journal of the Oklahoma State Medical Association, Volume 48, Page 180 (June) 1955.

The Institute for the Crippled and Disabled, Rehabilitation Center, New York, N. Y., has begun a series of Thumbs Up publications which give a complete story of rehabilitation as seen through the eyes of the disabled. The latest issue is a 30-page picture magazine titled The World The Handicapped Live In, a copy of which is in the Medical Library. Copies of the publication are available without charge upon request to the Institute, 23rd and First Avenue, New York, N. Y.

Hillcrest Medical Center of Tulsa has begun the publication of a new house organ entitled the Voice of Hillcrest. The first issue, appearing in June, 1955, contains a complete resume of news and feature activities at the Center. Dr. Dave B. Lhevine, Chief of Radiology at the Center, is the author of the principal feature article which is concerned with the history and development of x-ray as a medical science. Attractively illustrated, the publication is edited by Mr. James D. Harvey, Assistant Administrator of Hillcrest Medical Center.

USE YOUR LIBRARY

# PRESIDENT'S PAGE

The annual membership roster of the Tulsa County Medical Society is published elsewhere in this issue of The Bulletin. You may be surprised to learn that it contains 334 names. In the ten years since the close of World War II the medical population of Tulsa has more than doubled. This great influx has been naturally due to our booming population which has come about through the effort and foresight of civic-minded men and women, who by promoting industry, schools, churches and cultural facilities have made Tulsa a city second to none of like size in which to live. Other factors have played an important role, however, in attracting new doctors to the community. These include the growth and development of hospital and clinical facilities, expanded opportunities for postgraduate medical study, and the high level of professional and ethical standards of practice. The result is that Tulsa is rapidly becoming an important medical center, staffed by well educated and highly trained specialists and general practitioners employing the most modern facilities for diagnosis and treatment.

We have all been impressed by the calibre of the new recruits to Tulsa Medicine. They bring with them an extensive background of resident hospital training, research and postgraduate fellowships, and the valuable experience of tours of military medical duty. Which is more important, they add a youthful vigor to our profession and help channel our professional thinking in modern channels. When this is leavened with the mature thinking and experience of older physicians, the result is a progressive and energetic medical profession. Our rapid expansion has not been without its problems, and the administration of Tulsa Medicine is becoming more complex year by year. I feel that we will have little difficulty in meeting this problem through careful planning, close cooperation within the profession, and judicious yet modern thinking. Tulsa Medicine has come along way in the last few years and is just now facing its greatest era.

Sincerely,

*Frank J. Nelson M.D.*

President



*For The Finest In*  
**PRESCRIPTION  
SERVICE**

Our professional know-how, based on more than a quarter of a century of service to the Medical Profession of Tulsa, assures you and your patient of the finest in reliable prescription compounding. We use only the best of fresh, pure drugs to compound your prescriptions exactly as written. Give us a call today.

**FAST FREE DELIVERY**

*Prather's*  
**PRESCRIPTION SHOPS**

Two Fine Stores To Serve You . . .

---

---

**MEDICAL ARTS BUILDING**

**Telephone Gibson 7-0121**

---

---

**PRATHER'S DRIVE-IN PRESCRIPTIONS**

**3008 East 15th Street**

**Telephone Webster 9-5411**

---

---

Since 1916 . . .

*al* MUSICK DRUG

NORTH AND WEST

*Store Number One*

529 NO. DENVER

*Telephone*

LU 4-7288

||  
*City-Wide Delivery*  
||

NORTH AND EAST

*Store Number Two*

APACHE & GARRISON

*Telephone*

DI 3-3003

# BLOOD CENTER NEWS

## DISTRIBUTION AND REPLACEMENT REPORT

June, 1955

Hospital:	Bloods Used:	Replacements:	% Rep.
St. John's .....	574	231	40.3%
Hillcrest .....	364	119	32.7%
Osteopathic .....	68	37	54.4%
Mercy .....	10	0	00.0%
Moton .....	6	3	50.0%
Tulsa Osteo. ....	0	2	.....
Byrne .....	22	4	18.2%
Broken Arrow .....	12	13	108.8%
Other .....	42	24	57.1%
Totals .....	1,098	433	39.5%

With the advent of hot weather blood donations at the Tulsa County Red Cross Blood Center have fallen materially. Replacements, usually averaging 45 per cent, dropped to 39.5 per cent in June and appeared headed for further reductions in July and August.

To insure that blood is available for patients for whom specific donations have been made, the Medical Advisory Committee of the Tulsa County Medical Society has placed in effect a priority system adopted several months ago in anticipation of critical donation periods. Until further notice, blood will be made available under the following priority classifications:

1. Blood will be supplied to all true medical emergencies, regardless of whether or not advance donations were made.

2. Blood will be made available to patients for whom specific donations have been made by individuals or firms or groups with an organized recruitment program.

3. When the blood is available those patients who have not had replacements will then be supplied.

This plan necessitates that for most cases of elective surgery and non-emergency care that donations be made in advance. Doctors should take this factor into consideration and advise the patient and his family of the necessity to make advance donations.

The Committee has also made the following recommendations to participating

hospitals:

1. If the patient does not receive the transfusion cross matched for him within 48 or 72 hours, the blood should be made available to another patient.

2. Every effort should be made to use all bloods before their expiration date 21 days from the date of collection. When blood on hand is 16 or 17 days old, the Center should be notified.

The priority system will be discontinued as the situation eases with the advent of the Fall months.

At the end of the first 26 weeks of operation this year, the Tulsa County Red Cross Blood Center had furnished to patients of Tulsa County hospitals a total of 6,570 pints of whole blood. Another 134 pints were furnished for emergency situations in other Oklahoma hospitals. This total of 6,704 pints compares to 6,156 supplied during the same period in 1954.

Replacement donors supplied 43 per cent of all blood used this year as compared to 35 per cent for the same period last year. The mid-year inventory was 141 pints as against 75 pints for July 1, 1954. It is apparent that the improved situation in recruitment of replacement donors has contributed towards a healthier position in the availability of blood supplies.

The statistics of blood types furnished during the first six months of 1955 are as follows: O positive, 38.97%; A positive, 32.14%; O negative, 8.53%; B positive, 8.35%; A negative, 6.64%; AB positive, 2.89%; B negative, 1.72%; AB negative, 0.76%.

This compares with the standard availability table which follows: O positive, 39.76%; A positive, 31.11%; O negative, 7.14%; B positive, 10.37%; A negative, 5.49%; AB positive, 3.65%; B negative, 10.37%; A negative, 5.49%; AB positive, 3.65%; B negative, 3.66%; and AB negative, 0.65%.

The most marked differences in the local distribution from the standard availability is the reduced amount of B positive and B negative and the increased amount of A negative. In comparison 17 per cent more Rh negative type

blood was used than in the standard table. This is particularly noticeable in the use of O Rh negative blood. With use of Rh negative blood at an accelerated rate, it is apparent that deficiencies in these types will occur more often than is desirable. Excessive use of blood in non-emergency conditions undoubtedly contributes to this situation.

The figures point up a necessity for doctors to ask themselves with all honesty the question: Is this blood transfusion necessary?

### TULSA HOSPITAL APPROVED FOR FOREIGN STUDENTS

St. John's Hospital of Tulsa was accredited last month to admit non-immigrant foreign students in its School of Nursing. Notice of federal approval of the Hospital was received from the United States Naturalization Service.

The action paves the way for the Hospital to accept two to four Chinese Nationalist nursing students from Formosa. Students from other countries may be accepted later. The students would receive

a three-year scholarship from the Hospital, after which time they would return to their native country or be permitted to stay for limited postgraduate work. The new nursing class at St. John's is now scheduled to commence on September 12, 1955.

Dr. George F. Lull, Secretary of the American Medical Association, last month announced that a scientific motion picture prepared by DR. JOHN G. MATT of Tulsa was among the six most popular films shown at the AMA annual meeting in Atlantic City last June 6-10. The picture was entitled "Rizzoli Stone Operation."

Physicians who contributed their services to the Salvation Army Red Shield Summer Boys Camp program of physical examinations, July 6-7, included DR. ROBERT D. GRUBB, DR. R. G. SHERWOOD, DR. WILLIAM M. BENZING, JR., DR. THOMAS A. McDOWELL, DR. WORTH M. GROSS, DR. WILMOT B. BOONE, DR. PAUL O. SHACKELFORD, DR. J. C. DEVINE, DR. WILLIAM H. BUCHAN, DR. ROBERT A. NORTHRUP, DR. CRAIG S. JONES, DR. ROYAL E. STUART, DR. DONALD L. BRAWNER, DR. GERALD E. CRONK, DR. W. A. WATERS, DR. HOWARD M. COHENOUR, DR. DEAN C. WALKER, DR. TERRELL COVINGTON, JR., DR. D. L. EDWARDS, DR. MILFORD S. UNGERMAN, and DR. RICHARD G. WILIAMS.

DR. CLARENCE C. HOKE, retired Tulsa surgeon, has moved to Winfield, Kansas, to reside.

DR. BYRON L. BAILEY has reentered private practice in Tulsa after an absence of four years, during which time he served two years in the United States Navy Medical Corps and two years in resident training at University Hospitals, Oklahoma City. He will specialize in Internal Medicine with offices at 317 Utica Square Medical Center.

DR. ROBERT B. WITCHER has been vacationing in Colorado.

DR. ROBERT G. TOMPKINS has been vacationing in the State of Washington.

## UTICA SQUARE PHARMACY

Dial

Riverside 2-2434

Prompt

FREE DELIVERY

CHARGE ACCOUNTS  
INVITED



“a thimbleful of dosage

for  
a

handful

of

“baby”



2.5 cc. Hypertussis eliminates massive dosage in whooping cough treatment or passive prevention. A crystal-clear homologous protein, 2.5 cc. Hypertussis contains the gamma globulin equivalent of 25 cc. of human hyper-immune serum. This specific anti-pertussis fraction is concentrated 10-fold to obviate the pain and inconvenience associated with massive dosage—giving you the advantage of

*“a thimbleful of dosage for a handful of baby.”*

Hypertussis will not interfere with the use of antibiotics where they may be indicated.

2.5 cc. Hypertussis is supplied in 2.5 cc. (one dose) vials, ready for immediate intramuscular injection.



**CUTTER** Laboratories  
BERKELEY, CALIFORNIA

For whooping cough prophylaxis and treatment specify

**2.5cc. HYPERTUSSIS®**  
(anti-pertussis serum-human)

Representative: Mark Mathes, 6400 East 5th, Tulsa, Ph. TE 5-2963

# PROFESSIONAL DRUG SHOP

Where Prescription Perfection  
Comes First

TELEPHONE Riverside 7-1384

**2110 South Utica**

D. L. KINCAID  
(Kinney)

RAYMOND EWERS

*Roadside Invitation  
To Drive Refreshed*



**DRINK**  
*Coca-Cola* 5¢  
REG. U.S. PAT. OFF.

BOTTLED UNDER AUTHORITY OF THE COCA COLA COMPANY BY



**OBSTETRICIANS ORGANIZE LOCAL SPECIALTY SOCIETY**

Dr. Dixon N. Burns has been named President of the newly organized Tulsa Obstetrical and Gynecological Society. The specialty group comprises twenty-one Tulsa County medical doctors specializing in obstetrics and gynecology.

Other officers of the new organization are Dr. Walter B. Sanger, President-Elect; Dr. W. Carl Lindstrom, Vice-President; Dr. Jed E. Goldberg, Secretary-Treasurer; and Dr. William F. Thomas, Jr., member of the executive committee.

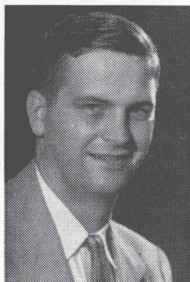
Beginning in September the Society will hold monthly meetings featuring visiting distinguished guest speakers. The scientific session will be open to all Tulsa doctors.

The group held a preliminary organizational meeting on May 28th, adopting a constitution and by-laws on June 23rd. Membership will be of two classifications, Active, comprising full-time specialists in the field, and Associate, to which general practitioners doing obstetrics and gynecology may be admitted.

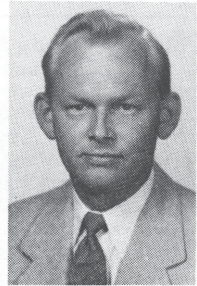
**NEW APPLICANTS**

The following physicians are applicants for membership in the Tulsa County Medical Society:

*John Robert Walter Spencer, M.D.* 312 Medical Arts Building, Tulsa. Medical Degree, Vanderbilt University Medical School, Nashville, Tennessee, 1951. Interned Presbyterian Hospital, 1951-52. Resident in Ophthalmology, University of Pennsylvania Hospitals, Philadelphia, Pennsylvania, 1952-55. Military service, United States Navy, Lt. (J.G.) 1943-46. Specialty, Ophthalmology. Recommended by Dr. Franklin D. Sinclair and Dr. Dixon N. Burns.



*James T. Maddox, M.D.* Ranch Acres Medical Center, 3102 South Harvard, Tulsa. Medical Degree, Tulane University School of Medicine, New Orleans, Louisiana, 1951. Interned Charity Hospital of Louisiana, New Orleans, Louisiana, 1951-52. Resident in Obstetrics and Gynecology, Charity Hospital of Louisiana, New Orleans, Louisiana, 1952-55. Clinical Instructor of Obstetrics & Gynecology, Tulane University School of Medicine, New Orleans, Louisiana, 1954-55. Military Service, United States Navy, Lt. 1942-46. Specialty, Obstetrics & Gynecology. Recommended by Dr. Loren V. Miller and Dr. Houston F. Mount.



*Frank H. McGregor, M.D.* Ranch Acres Medical Center, 3102 South Harvard, Tulsa. Medical Degree, University of Oklahoma School of Medicine, 1950. Interned University Hospitals, Oklahoma City, Oklahoma, 1950-51. Resident in Surgery, University Hospitals, Oklahoma City, Oklahoma, 1951-55. Formerly Clinical Assistant in Surgery, University of Oklahoma School of Medicine. Military Service, Army Corps of Engineers, 1943-46, Technician 4th Grade. Specialty, General Surgery. Recommended by Dr. H. Kenneth Ihrig and Dr. Loren V. Miller.



DR. H. J. RUBIN has returned from a six weeks vacation in the East. Most of his trip was spent at Nantasket Bay near Boston, Massachusetts, where he took some special instruction in oil painting. Dr. Rubin also visited several Eastern medical schools and spent several days at Boston Childrens Hospital of Pittsburgh, Pennsylvania.

DR. THOMAS B. COULTER has removed his offices to his home, 1346 South Norfolk.

## AUGUST MEDICAL CALENDAR

### FRIDAY, August 5th:

St. John's Tumor Clinic, Clinical Conference, 8:30 A.M.  
 St. John's Isotope Committee Meeting, St. John's Hospital, 8:30 A.M.  
 X-Ray Conference, Hillcrest Medical Center, 3:00 P.M.

### MONDAY, August 8th:

No Tulsa County Medical Society meeting on this date. Meetings resume Monday, September 12, 1955.

Medical Telecast, "Medic" series, Television Station KVOO-TV, 7:00 P.M. Subject: "The Wild Intruder."

### TUESDAY, August 9th:

St. John's Tumor Clinic, 8:00 A.M.  
 Grand Rounds, Medical Section, Hillcrest Medical Center, 7:30 P.M.

### WEDNESDAY, August 10th:

St. John's Isotope Clinic, St. John's Hospital, 8:30 A.M.  
 Clinical Pathological Conference, Hillcrest Medical Center, 7:00 P.M.

### FRIDAY, August 12th:

St. John's Tumor Clinic, Clinical Conference, 8:30 A.M.  
 St. John's Isotope Committee Meeting, St. John's Hospital, 8:30 A.M.  
 X-Ray Conference, Hillcrest Medical Center, 3:00 P.M.

### MONDAY, August 15th:

Medical Telecast, "Medic" series, Television Station KVOO-TV, 7:00 P.M. Subject: "Dr. Impossible."

St. John's Hospital, Clinical Pathological Meeting, 7:15 P.M.  
 St. John's Hospital, Staff Meeting, 8:00 P.M.

### TUESDAY, August 16th:

St. John's Tumor Clinic, 8:00 A.M.  
 Grand Rounds, Medical Section, Hillcrest Medical Center, 7:30 P.M.  
 Medical Assistants Society of Tulsa Meeting, Michaelis Cafeteria, 6:30 P.M.

### WEDNESDAY, August 17th:

Copy deadline for the September issue of The Bulletin.  
 St. John's Isotope Clinic, St. John's Hospital, 8:30 A.M.

### FRIDAY, August 19th:

St. John's Tumor Clinic, Clinical Conference, 8:30 A.M.  
 St. John's Isotope Committee Meeting, St. John's Hospital, 8:30 A.M.  
 X-Ray Conference, Hillcrest Medical Center, 3:00 P.M.

### MONDAY, August 22nd:

Medical Telecast, "Medic" series, Television Station KVOO-TV, 7:00 P.M. Subject: to be announced.

No meeting of the Tulsa Academy of General Practice on this date. Meetings suspended until September 26, 1955.

### TUESDAY, August 23rd:

St. John's Tumor Clinic, 8:00 A.M.  
 Grand Rounds, Medical Section, Hillcrest Medical Center, 7:30 P.M.

### WEDNESDAY, August 24th:

St. John's Isotope Clinic, St. John's Hospital, 8:30 A.M.  
 Board of Trustees Meeting, Tulsa County Medical Society, 2020 South Xanthus, Tulsa, 1:00 P.M.

### FRIDAY, August 26th:

St. John's Isotope Committee Meeting, St. John's Hospital, 8:30 A.M.  
 St. John's Tumor Clinic, Clinical Conference, 8:30 A.M.  
 X-Ray Conference, Hillcrest Medical Center, 3:00 P.M.

### MONDAY, August 29th:

Medical Telecast, "Medic" series, Television Station KVOO-TV, 7:00 P.M. Subject: "Flash of Darkness."

### TUESDAY August 30th:

St. John's Tumor Clinic, 8:00 A.M.  
 Grand Rounds, Medical Section, Hillcrest Medical Center, 7:30 P.M.

### WEDNESDAY, August 31st:

St. John's Isotope Clinic, St. John's Hospital, 8:30 A.M.

# HARVARD DRUG STORE

B. C. SHINN, Owner

Phone MADison 6-2186

*The  
Suburban  
Prescription  
Store*

FREE  
PRESCRIPTION  
DELIVERY  
3244 E. 11th St.  
Tulsa

# INSURANCE

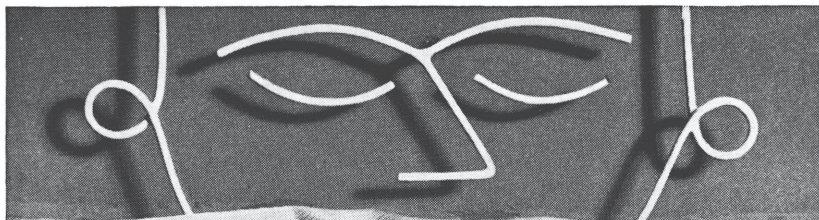
*Professional  
Liability*



*All Other  
Forms*

R. S. Henderson      H. B. Long  
F. S. Schneider      Don J. Grant

**ALEXANDER & ALEXANDER**  
INCORPORATED  
906 D-X Sunray Building  
Telephone GIBson 7-3146



# DORIDEN<sup>®</sup>

(glutethimide CIBA)

totally new nonbarbiturate hypnotic-sedative

In most cases—

Rapid onset — 15-20 minutes

Lasts 4-8 hours

No hangover

Dosage :

0.25 to 0.5 Gm.  
before bedtime.

Scored 0.25- and 0.5-Gm.  
tablets.

C I B A Summit, N. J.

2 / 2064M

## Telephone Your Prescriptions—

*For Prompt And  
Accurate Compounding  
By Reliable Licensed  
Pharmacists*

**Free Delivery**

**Telephone RI 7-7519**

## **BROOKSIDE DRUG STORE**

**3348 South Peoria**

## **SPARTAN DRUG**

**6343 East Tecumseh  
Telephone TEmple 5-4076**

**Serving Spartan-  
Douglas-American  
Area**

**PRESCRIPTIONS SENT TO US  
WILL BE PROMPTLY FILLED**

**Two Pharmacists to Serve You**  
**STEVE LAWRENCE**  
**JOHN ADAMS**

### **PUBLIC HEALTH DEPARTMENT SEEKING RECORD BUDGET**

The Tulsa City-County Health Department is seeking a combined budget of \$368,389.00 for the 1955-56 fiscal year, including roughly a 6½ per cent raise for all personnel.

The request includes \$264,662.00 from the City and \$103,727 from the County. As this issue of The Bulletin went to press, the proposed budget was in the hands of City and County officials. It was anticipated some reductions in the requests would be made.

Dr. T. Paul Haney, Superintendent, said the request included funds to employ a third bacteriologist and a dentist to work at the Variety Club Health Center. A rabies control officer is also being sought.

The requested appropriation from the County is \$28,512 over that of the previous fiscal year. A sizeable portion of the increase is allocated for operation of five recently completed public health centers in smaller County towns.

Mayor L. C. Clark last month reappointed the Tulsa City Board of Health composed of Dr. Hugh C. Graham, Chairman, Dr. Homer A. Ruprecht, Dr. Walter E. Brown, Dr. Rayburne W. Goen, and Dr. Frank J. Nelson. New appointees by the County to the joint governing board are Mr. J. M. Patrick, Skiatook; Mr. D. M. Hawkins, Highland Park; and Mr. Walton Clinton and Mr. King Bostick of Tulsa.

DR. NEVIN W. DODD has transferred his commission from the Naval Reserve to the Oklahoma Air National Guard and has been commissioned in the rank of Lieutenant-Colonel. Dr. Dodd, incidentally, has been enjoying a fishing trip in Casper, Wyoming.

DR. ALBERT W. WALLACE has returned from a deep sea fishing expedition in the Gulf of Mexico.

DR. HAROLD W. FRIEZE and DR. EARL E. SMITH, JR. have completed their internship at St. Joseph Hospital of Wichita and last month opened their practice at Skiatook, Oklahoma. They will practice in an attractive remodeled clinic building.

from an editorial in the J.A.M.A.  
(156:991, Nov. 6, 1954):

Oral broad spectrum antibiotic therapy  
may cause infection with *Candida albicans*

## **A new concept in antibiotic therapy**

**antibacterial therapy  
plus  
antifungal prophylaxis  
in one capsule**

Each Mysteclin capsule, containing 250 milligrams of tetracycline hydrochloride and 250,000 units of nystatin, costs the patient only a few pennies more than does tetracycline alone.

Minimum adult dose: 1 capsule q.i.d.  
Supply: Bottles of 12 and 100.

# **MYSTECLIN**

**SQUIBB TETRACYCLINE-NYSTATIN**

**antibacterial · antifungal**

\*MYSTECLIN\* IS A SQUIBB TRADEMARK.

**SQUIBB**

## THE COYNE CAMPBELL-SLEEPER CLINIC

ANNOUNCES THE OPENING OF A

### DOWNTOWN CLINIC

AT 525 N. W. ELEVENTH

OKLAHOMA CITY, OKLAHOMA

GA 7-2441

ELECTROENCEPHALOGRAPHY

PSYCHOLOGICAL TESTING

GROUP PSYCHOTHERAPY

CHILD PSYCHIATRY

**“Premarin” relieves  
menopausal symptoms with  
virtually no side effects, and  
imparts a highly gratifying  
“sense of well-being.”**

“Premarin”<sup>®</sup>—Conjugated Estrogens (equine)

**SURGICAL GROUP SETS NEW ANNUAL MEETING DATES**

The Southwestern Surgical Congress has announced revised dates for its Seventh Annual Meeting at Kansas City, Missouri, for September 5-7, 1955. The new dates are one week earlier than those previously announced.

Visiting distinguished guest speakers for the convention will include:

*Dr. William P. Longmire, Jr.*, Professor and Chairman of the Department of Surgery, University of California School of Medicine, Los Angeles, California.

*Dr. Frederick L. Reichert*, Professor of Surgery, Stanford University Medical School, San Francisco, California.

*Dr. J. Englebert Dunphy*, Associate Clinical Professor of Surgery, Harvard University School of Medicine, Boston, Massachusetts.

The meeting, to be held at the Muehlebach Hotel, will include daily clinics presented by various University medical schools, roundtable luncheons, symposia, and social events. Non-member are invited to attend and may secure copies of the program by writing to the Southwestern Surgical Congress, 207 Plaza Court Building, Oklahoma City.

**FOR RENT:** Attractive professional quarters in modern clinic building in suburban Tulsa area. Air-conditioned, large parking area, ideal for general practitioner or specialist. For information contact Mrs. Walter H. Calhoun, 5323 South Lewis, Tulsa, Telephone RIverside 2-1993.

**DR. JOE E. TYLER** has been reappointed by Governor Raymond Gary to the Oklahoma Mental Health Commission.

**DR. ROBERT A. HAYNE**, former Tulsa neurosurgeon, has been discharged from military service and has entered practice at Iowa City, Iowa.

**DR. MARTIN LEIBOVITZ** will conduct a series of Didactic Lectures in Surgery each Thursday at 12:30 P. M. at Hillcrest Medical Center beginning September 1st. The series will continue through the balance of the year.



**DICK KELLO**

**Use our consistently fine prescription service—always at FAIR PRICES**

Covering EAST Tulsa with Prompt Service

**Telephone MA 6-2156**

**BALL DRUG STORE**

College at Admiral

**Doctors Unlisted Number: MA 6-2157**

*An Independently Owned Prescription Pharmacy Serving All Tulsa Doctors*

*Purdy's*  
**RANCH ACRES PHARMACY**

*in beautiful Ranch Acres*

**3102 S. HARVARD**

*Telephone*

**RI 7-4550**

*City-Wide Delivery*

*Sunday, 10-1, 4-9:30*

*Weekdays, 8:30-9:30*

# BUTLER DRUG STORE

6528 East King St

Telephone  
TEmple 5-1563

*A Professional Pharmacy  
for Your Convenience  
Serving Northeast Tulsa.*

**YES, WE DELIVER!**

C. O. BUTLER, Owner

*North and West*

**13TH AND MAIN**

Telephone GI 7-3103

**SCOTT ROBISON'S**

*Service*

**PRESCRIPTION  
STORES**

**15TH AND LEWIS**

Telephone WE 9-6393

*South and East*

## 28 INTERNS AND RESIDENTS NOW AT TULSA HOSPITALS

Twenty-eight medical doctors have entered or are continuing internships and residencies at St. John's Hospital and Hillcrest Medical Center of Tulsa. Most will serve through June, 1956.

The personnel for the two hospitals is as follows:

*Hillcrest Medical Center:* Dr. Douglas Mimms, Dr. John T. Brauchi, Dr. C. N. Clifton, Dr. Jack Cecil Robertson, Dr. Robert Reddin, Dr. Bernard Guenther, Dr. William Elrod, Dr. Bertrand Worshan, and Dr. Robert Jabour, interns; Dr. Arnulfo Portales, Dr. William VanPelt, and Dr. A. Romo Caballera, residents.

*St. John's Hospital:* Dr. Donald Bobek, Dr. Jeanne B. Johnson, Dr. Eugene Burgess, and Dr. Marvin Dunn, interns; Dr. S. A. V. Alanis, Dr. Joseph Dilger, Dr. Jess Green, Dr. Antonio Guiao, Mr. Manuel Guzman, Dr. Jack Hale, Dr. Lester Moline, Dr. Francisco Romero, and Dr. Dominco Zapanta, residents.

DR. JACK L. RICHARDSON, DR. PAUL E. CRAIG, DR. MARCELLA R. STEEL, and DR. THOMAS A. McDOWELL have been appointed to the Executive Committee of the newly organized Eastern Oklahoma Chapter of the Muscular Dystrophy Association.

DR. PAUL O. SHACKELFORD has been elected to the Men's Council of St. John's Episcopal Church of Tulsa.

DR. and MRS. WILLIAM H. BUCHAN are celebrating the arrival of their fifth child and first daughter, Kathryn Lynn, July 11, 1955.

DR. HARLAN THOMAS has been vacationing at Rockaway Beach, Missouri.

DR. F. L. FLACK, President-Elect, has announced the personnel of the Program Committee of the Tulsa County Medical Society for 1956 as DR. WALTER E. BROWN, Chairman, DR. EDWARD L. MOORE, and DR. JAMES C. PETERS.

DR. JACK O. AKINS has returned from a three weeks vacation in California.

DR. and MRS. FRED J. PERRY are parents of a new baby girl, born July 6th.



# FOR PARENTS TO BE



A concise and informal 16 page booklet containing authentic nutrition information for the expectant mother and father. Charts and pleasing illustrations are used. Manuscript has been critically reviewed by prominent specialists.

Copies for your patients are available without charge.

## DAIRY COUNCIL OF TULSA

Affiliated With  
National Dairy Council

312 Wright Building  
Telephone GI 7-8280

# Bath-Opto

EYE DROPS and EYE WASH

Between Office Visits—your patient will find relief from Congestion and External Irritation with BATH OPTO.



**EYE DROPS**  
With Ephedrine .2%  
1/2-Oz. Dropper Bottle

### FORMULA

Boric Acid, Sodium Chloride, Sodium Borate, Camphor Water, Glycerin, Chlorobutanol, Benzalkonium Chloride.

Also available as Eye Wash without Ephedrine in 4-oz. Bottle with Cup.



Summer Time -



Provides an excellent prophylactic after exposure to sun, wind, glare, dust or after a swim. The EYE BATH is excellent for milady at the start of her "evening."

**RHINOPTO COMPANY**  
Dallas  
Manufacturers of  
**RHINALL NOSE DROPS**

Ethical Specialties for the Profession ★ SAMPLES ON REQUEST

*Our Staff of  
Registered Pharmacists*

DEANE D. RALEY

NEAL BITTING

W. J. SHADDOCK

ARTHUR B. PARKS

GEORGE A. FENTON

Our modern delivery equipment assures your patients prompt efficient service.

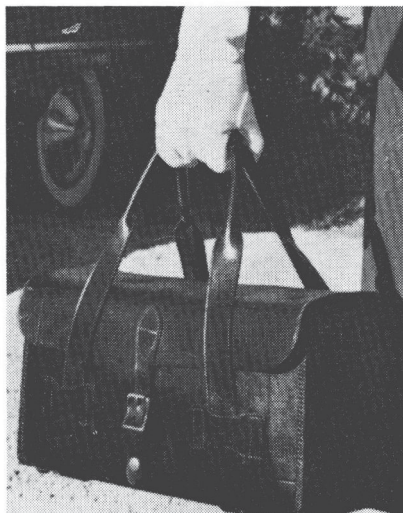
STORE HOURS: 8:00 A.M. - 9:00 P.M.  
Sunday 10:00 A.M. - 6:00 P.M.

*Free Customer Parking in Rear*

**RALEY - SHADDOCK**  
PRESCRIPTION PHARMACY

1325 East 15th

Ph. Gibson 7-3133



*The Helping Hand  
of the  
Public Health Nurse  
Benefits Your Patients,  
Doctor*

You give the orders . . .

They visit the home . . .

The maximum fee is \$3.00

*Call LU 4-4238*

**TULSA COUNTY PUBLIC HEALTH ASSOCIATION**

808 South Peoria

## INADEQUATE PUBLIC HEALTH EXPENDITURES CRITICIZED

At least 53 cents more per person, or approximately \$146,500 should be spent in Tulsa County for public health services, the annual report of the Tulsa City-County Health Department for 1954-55 indicates.

Dr. T. Paul Haney, Superintendent, noted in his report released last month that \$1.47 is spent for each Tulsa County resident for public health purposes. "For adequate health service there should be at least \$2.00 per capita expenditures by official agencies, not including the voluntary agencies," he said.

The report noted continued progress by the Health Department in the fields of sanitation, milk control, community public health nursing, and pre-school child health programs. The "tremendous growth" of Tulsa has created new problems of sanitation control, in particular, the report said.

Listed as some of the current public health problems in Tulsa were:

1. Poor sanitation in many small bake shops.

2. An antiquated trailer camp ordinance which is permitting unsatisfactory sanitation conditions. A revision of the ordinance is indicated, the report noted.

3. Tighter controls over the menace of unrefrigerated cream and custard pies and pre-wrapped sandwiches in restaurants to prevent the growth of causative agents of food poisoning.

4. Further improvements in the sanitary requirements of the County's 44 licensed nursing and rest homes.

5. A need for better dental care among pre-school children.

6. Continued use of privy toilets in Garden City, South Haven, Oakhurst, and parts of West Tulsa.

Heart disease continued the number one killer in Tulsa County with 729 victims, followed in order by diseases of the nervous system, cancer and tumors, congenital diseases malformations of infancy, pneumonia, poisonings, and violence and accidents. The birth rate climbed from 7,391 in 1953 to 7,670 in 1954, while deaths fell from 2,305 in 1953 to 2,257 in 1954.

# ST. JOHN'S HOSPITAL



*A Leading  
Institution  
In  
Oklahoma  
Medicine*



1923 SOUTH UTICA  
TULSA, OKLAHOMA

TELEPHONE  
RI 2-3361

**Our NEW**

**Telephone Number**

is

**Riverside 2-3387**

Registered Graduate  
Pharmacists Only

**VERLE SMITH'S  
PRESCRIPTION SHOP**

IN BROOKSIDE

**3409 SOUTH PEORIA**

Week Days 8 A.M. to 10:00 P.M.

Sundays and Holidays

9:00 A.M. - 12:00 Noon

6:00 P.M. - 9:00 P.M.



## *The Medical Tradition*

To know and understand the Medical Profession is to have an appreciation of the fine and humanitarian art of healing. To help maintain the high standards of the Profession and its work is one of the objectives of The Medical Credit Bureau. Owned and operated by the Tulsa County Medical Society, the Bureau offers a diplomatic collection service that respects the rights of both patients and doctors, and restores good relations through considerable but efficient collection methods. That is why for nearly twenty years The Medical Credit Bureau has been the doctor's assurance of a tasteful, effective handling of medical collection problems. Complete legal and out-of-town services augment our experienced, trained staff. A non-profit organization, The Medical Credit Bureau offers a maximum service at a minimum cost.

*Tulsa's Finer Collection Service*

### **MEDICAL CREDIT BUREAU**

*Official Collection Agency of The Tulsa County Medical Society*

**B-9 Medical Arts Building**

**Telephone DI 3-6331**

# MEDICAL SERVICE SOCIETY OF TULSA

## Membership Roster, Tulsa Chapter

<i>Name:</i>	<i>Representing:</i>	<i>Telephone:</i>
Jim Baughman	Schenley Laboratories	WE 9-9165
William A. Cates	E. R. Squibb Co.	RI 7-1267
J. P. Crawford	Armour Labories	MA 6-3481
Joe F. Chappell	Kremers-Urban	LU 3-5237
C. R. Doran	Lakeside Laboratories	Claremore 1083
Verne L. French	McNeil Laboratories	WE 2-2443
R. C. Gooch	Abbott Laboratories	WE 9-4389
Lou Hayes	Massengill Co.	LU 4-2128
Hagerman, Ray C.	Ayerst Laboratories	RI 2-4320
Paul Heaston	Sharp and Dohme	RI 2-8447
C. M. (Mike) Kelly	National Drug Co.	WE 9-9311
A. L. Kessler	Pitman-Moore Co.	LU 4-7951
Dorwin Lamkin	Upjohn	RI 7-1668
R. E. Loftus	Warren-Teed	RI 7-1717
W. M. Mashburn	Lederle Laboratories	RI 2-8275
Mark Mathes	Cutter Laboratories	TE 5-2963
R. T. (Bob) Mauch	Burroughs-Wellcome	RI 7-4347
Ralph L. Miller	Hoffman-LaRoche	RI 7-1878
Jim Putnam	J. B. Roerig Co.	RI 2-3833
A. M. Sayles	E. R. Squibb & Co.	RI 2-1646
Tom Sellers	G. D. Searle	WE 9-7361
Bill Terral	Sharp & Dohme	TE 5-7008
Cecil Tredway	Wyeth Laboratories	WE 9-0075
Bill Walker	Parke-Davis	WE 9-8015
Preston Walker	Upjohn	RI 7-6464
H. L. (Jack) Wood	Winthrop-Stearns	RI 2-8218

*Hear "Tell Me, Doctor" daily Monday through Friday, Radio Station KTUL, 5:15 P.M., sponsored by the Oklahoma State Medical Association in cooperation with Getman Drug Store.*

## Professional Directory

<p><b>S. Y. ANDELMAN, M.D.</b>                      Diagnosis &amp; Treatment of                      Arthritis &amp; Rheumatic Diseases                      320 Utica Square Medical Center                      Ph. RI 7-0173</p>	<p><b>DONALD L. BRAWNER, M.D.</b>                      General Surgery                      406 Medical Arts Bldg., Ph. LU 7-2022</p>
<p><b>WILLIAM M. BENZING, JR., M.D.</b>                      Diplomate American Board of Radiology                      302 Medical Arts Bldg. Ph. DI 3-3044</p>	<p><b>MANUEL BROWN, M. D.</b>                      Allergic Diseases                      1619 E. 15th St. Ph. LU 4-5552</p>
<p><b>BERGET H. BLOCKSOM, M. D.</b>  <b>MAXWELL A. JOHNSON, M. D.</b>                      Urologists                      Diplomates, American Board of Urology                      517 Medical Arts Bldg., Ph. LU 4-1888</p>	<p><b>EMIL M. CHILDERS, M.D.</b>                      General Surgery                      302 Utica Square Medical Center                      Ph. RI 2-8854</p>

## Professional Directory

<p><b>SAFETY R. FIRST, M.D., F.A.C.C.</b>  <b>Cardiology &amp; Electrocardiology</b>  <b>1011 Medical Arts Bldg. Ph. LU 4-7545</b></p>	<p><b>WALTER S. LARRABEE, M.D.</b>  <b>LEON H. STUART, M.D.</b>  <b>X-Ray Diagnosis &amp; Therapy</b>  <b>Radium Therapy</b>  <b>411 Medical Arts Bldg. Ph. GI 7-3111</b></p>
<p><b>SAMUEL E. FRANKLIN, M. D.</b>  <b>General Surgery</b>  <b>1619 E. 15th St. Ph. LU 3-2108</b></p>	<p><b>MARION K. LEDBETTER, M.D.</b>  <b>Diplomate, American Board of Pediatrics</b>  <b>1453 S. Quaker Ph. DI 3-4332</b></p>
<p><b>JED E. GOLDBERG, M.D.</b>  <b>Obstetrics and Gynecology</b>  <b>Culdoscopy</b>  <b>212 Utica Square Medical Center</b>  <b>Ph. RI 2-8662</b></p>	<p><b>MARTIN LEIBOVITZ, M.D.</b>  <b>Thoracic and Cardiovascular Surgery</b>  <b>Certified American Board of Surgery</b>  <b>and Board of Thoracic Surgery</b>  <b>812 Medical Arts Bldg. Ph. DI 3-8722</b></p>
<p><b>JOHN F. GRAY, JR., M.D.</b>  <b>Neuropsychiatry</b>  <b>208 Utica Square Medical Center</b>  <b>Ph. RI 2-6016</b></p>	<p><b>C. S. LEWIS, JR., M.D.</b>  <b>Internal Medicine</b>  <b>501 Medical Arts Bldg. Ph. LU 4-2778</b></p>
<p><b>JAMES W. KELLEY, M.D., F.A.C.S.</b>  <b>Plastic and Reconstructive Surgery</b>  <b>Diplomate, American Board</b>  <b>Of Plastic Surgery</b>  <b>204 Utica Square Medical Center</b></p>	<p><b>ROBERT I. LUBIN, M.D.</b>  <b>Internal Medicine and</b>  <b>Cardiovascular Diseases</b>  <b>206 Utica Square Medical Center</b>  <b>Ph. RI 7-1589</b></p>

# SPRINGER CLINIC

Sixth and Cincinnati

### Tulsa

#### Medicine

D. O. Smith, M.D.  
 E. G. Hyatt, M.D.  
 H. A. Ruprecht, M.D.  
 Albert W. Wallace, M.D.  
 Vincel Sundgren, M.D.  
 Dean C. Walker, M.D.  
 Thomas H. Fair, M.D.

#### Neurology and Psychiatry

Tom R. Turner, M.D.  
 Joe E. Tyler, M.D.

#### Pediatrics

G. R. Russell, M.D.

#### Obstetrics and Gynecology

Paul A. Bischoff, M.D.

### Telephone LU 7-6621

#### General Surgery

Carl J. Hotz, M.D.  
 William C. Pratt, M.D.

#### Urology

K. F. Swanson, M.D.  
 William F. Boyer, M.D.

**Ear, Nose and Throat**  
**and Plastic Surgery**  
 Donald L. Mishler, M.D.

**Orthopedic Surgery**  
 Charles E. Brighton, M.D.

#### Ophthalmology

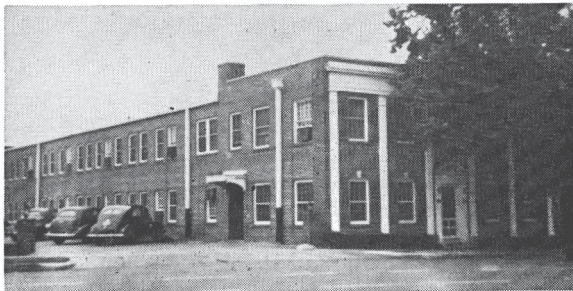
Thomas L. Ozment, M.D.

#### Anesthesia

M. R. Steel, M.D.

## Professional Directory

<p style="text-align: center;"><b>E. N. LUBIN, M.D.</b>                  Diplomate, American Board of Urology                  Genito-Urinary Diseases                  303 Medical Arts Bldg.                  Telephone CH 2-7550</p>	<p style="text-align: center;"><b>EDWARD L. MOORE, M.D., F.A.C.S.</b>                  Surgery                  Diplomate, American Board of Surgery                  318 Utica Square Medical Center                  Ph. RI 2-6545</p>
<p style="text-align: center;"><b>VANCE LUCAS, M.D.</b>                  Thoracic and General Surgery                  Diplomate, American Board of Surgery                  and Board of Thoracic Surgery                  Medical Arts Bldg. Ph. LU 3-5513</p>	<p style="text-align: center;"><b>HOUSTON F. MOUNT, M.D.</b>                  Obstetrics and Gynecology                  Ranch Acres Medical Center                  Ph. RI 2-0711</p>
<p style="text-align: center;"><b>JAMES D. MARKLAND, M.D.</b>                  Allergy                  411 Medical Arts Bldg., Ph. GI 7-3111</p>	<p style="text-align: center;"><b>IRON H. NELSON, M.D.</b>                  Clinical and Surgical Pathology                  1107 Medical Arts Building                  316 Utica Square Medical Center</p>
<p style="text-align: center;"><b>JOHN G. MATT, M.D.</b>                  Diseases of the Rectum,                  Colon and Anus                  1106 Medical Arts Building                  Ph. CH 2-1014</p>	<p style="text-align: center;"><b>THOMAS A. McDOWELL, M.D.</b>                  General Surgery                  Diplomate, American Board of Surgery                  Medical Arts Bldg. Ph. GI 7-1880</p>
<p style="text-align: center;"><b>RALPH A. MCGILL, M.D., F.A.C.S.</b>                  Surgery-Radium                  210 Utica Square Medical Center                  Ph. RI 2-2405</p>	<p style="text-align: center;"><b>MARQUE O. NELSON, M. D.</b>                  Practice Limited to                  Dermatology Radium and X-Ray Therapy                  510 Medical Arts Bldg. Tulsa</p>



# TULSA CLINIC

915 South Cincinnati

Surgery  
**Andre B. Carney, M.D.,**  
 F.I.C.S., F.A.C.S.  
**James H. Neal, Jr., M.D.**  
 American Board of Surgery  
 Medicine  
**H. W. Ford, M.D.**  
**Thomas W. Taylor, M.D.**  
 Cardiology and  
 Internal Medicine  
**James C. Peters, M.D.**

COMPLETE  
 CLINIC  
 FACILITIES

Telephone GI 7-0177

Miss Bettye Adams  
 Director

Neurology and  
 Internal Medicine  
**O. L. Hill, M.D.**  
 X-Ray and  
 Gastro-enterology  
**Earl M. Lusk, M.D.**  
 Internal Medicine  
**Craig S. Jones, M.D.**  
 Dentistry  
**J. Thurman Gamble, D.D.S.**

## Professional Directory

<p><b>L. C. NORTHRUP, M.D., F.I.C.S.</b> Gynecology &amp; Obstetrics 1307 S. Main                      Ph. DI 3-0151</p>	<p><b>WADE SISLER, M.D.</b> Orthopedic Surgery 8th and Elgin                      Ph. LU 4-4123</p>
<p><b>THE ORTHOPEDIC CLINIC</b> Suite 203, Utica Square Medical Center Practice Limited To Bone &amp; Joint Surgery <b>JOHN E. McDONALD, M.D.</b> <b>FRANK A. STUART, M.D.</b> <b>JOHN C. DAGUE, M.D.</b></p>	<p><b>WILLIAM ORLANDO SMITH, M.D.</b> Master Medical Science, University of Pennsylvania; Fellow, Cleveland Clinic; Diplomate, American Board of Otolaryng- ology. Ophthalmology &amp; Otolaryngology. 327 Utica Sq. Med. Ct.      Ph. RI 2-2443</p>
<p><b>WILLIAM J. OSHER, M. D.</b> Internal Medicine 608 Medical Arts Bldg., Ph. GI 7-9025</p>	<p><b>ROBERT W. SPENCER, M.D.</b> Ophthalmology 312 Medical Arts Building Ph. LU 3-2019</p>
<p><b>SIMON POLLACK, M.D., D.A.B.R.</b> Diagnostic and Therapeutic Radiology Suite 103, Utica Square Medical Center Ph. RI 2-4955</p>	<p><b>BYRON W. STEELE, JR., M.D.</b> Surgery Diplomate, American Board of Surgery 214 Utica Square Medical Center Telephone RI 7-0768</p>
<p><b>HERSCHEL J. RUBIN, M.D.</b> <b>LEONARD L. KISHNER, M.D.</b> Diplomates, American Board of Pediatrics Diseases of Infants &amp; Children 1916 South Utica                      Tulsa</p>	<p><b>CHARLES G. STUARD, M.D.</b> Ophthalmology 217 Utica Square Medical Center Ph. RI 7-0289</p>
<p><b>EVELYN M. RUDE, M.D.</b> Pediatrician 904 Medical Arts Building Tulsa                      Ph. GI 7-9017</p>	<p><b>TURNBOW &amp; RAY CLINIC</b> Surgery - Diagnostic and Therapeutic Blocks 3015 E. 15th Street Ph. WE 9-6397</p>
<p><b>J. D. SHIPP, M.D.</b> Surgery and Diseases of the Colon and Rectum 708 Medical Arts Bldg.                      Tulsa</p>	<p><b>ARNOLD H. UNGERMAN, M.D.</b> <b>MILFORD S. UNGERMAN, M.D.</b> Diagnosis &amp; Treatment of Nervous and Mental Diseases 404 Medical Arts Bldg., Ph. CH 2-3151</p>
<p><b>W. A. SHOWMAN, M.D.</b> Dermatology 408 Medical Arts Bldg., Ph. DI 3-7789</p>	<p><b>R. M. WADSWORTH, M.D.</b> Pediatrics 1445 S. Quaker                      Ph. DI 3-4300</p>