

GEOLOGIC MAP  
OF

THE FORAKER AREA

NORTHWEST OSAGE COUNTY, OKLAHOMA

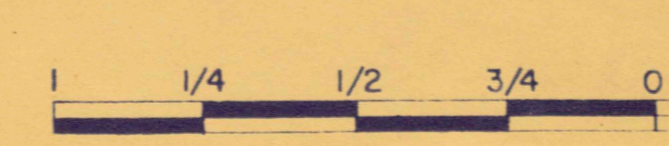
CLARK TAYLOR, MS 1953

PERMIAN WOLF CAMPIAN

PENNSYLVANIAN VIRGILIAN SERIES

GEOLOGIC SYMBOLS  
CONTACT  
CONCEALED CONTACT

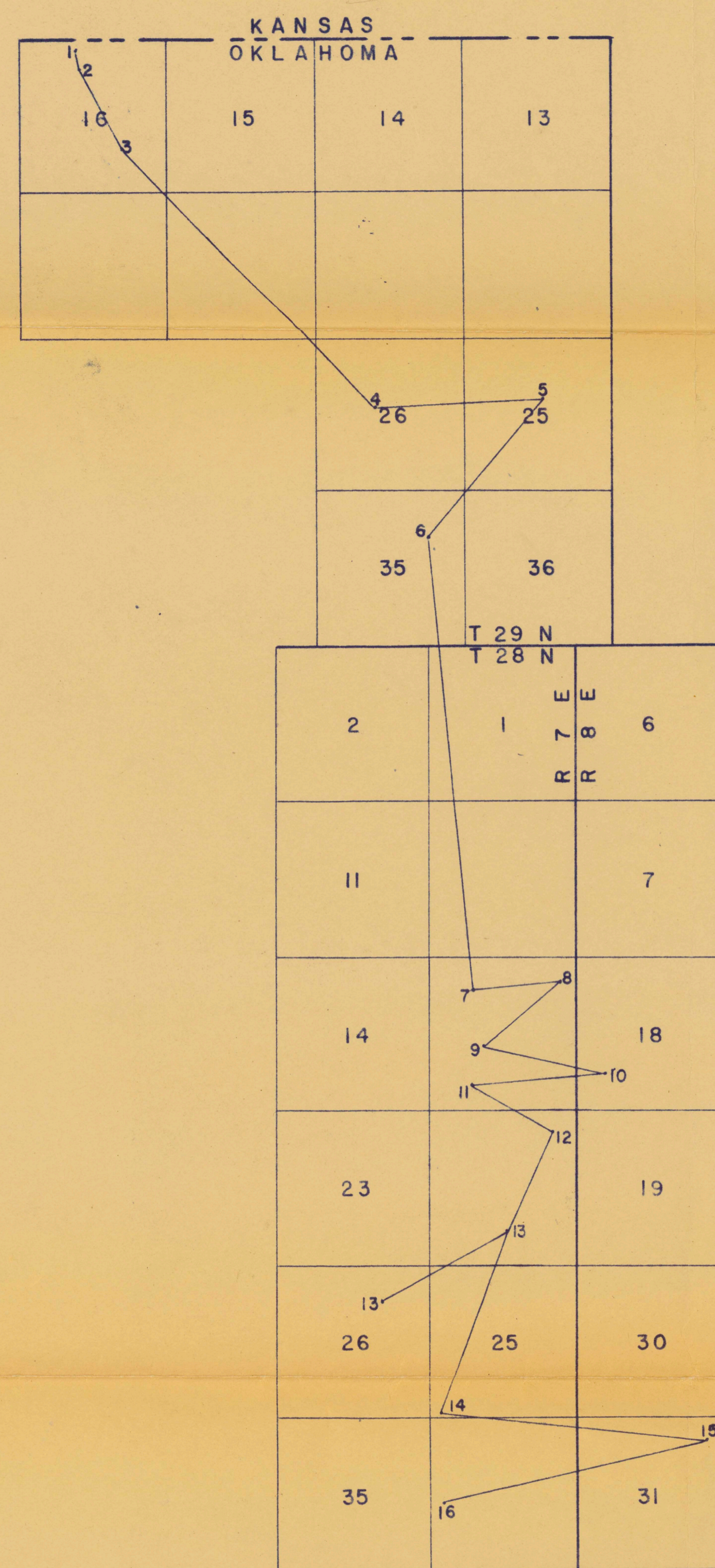
SCALE  
MILES



CHASE GROUP	WRETFORD LIMESTONE	
	CROUSE LIMESTONE	
	COTTONWOOD LIMESTONE	
COUNCIL GROVE GROUP	NEVA LIMESTONE	
	RED EAGLE LIMESTONE	
	FORAKER LIMESTONE	
	BROWNVILLE LIMESTONE	
	GRAYHORSE LIMESTONE	
	STONEBREAKER LIMESTONE	
	WABAUNSEE GROUP	
	CULTURE	
	IMPROVED ROAD	
	PRIVATE ROAD	
	RAILROAD	
	PERMANENT STREAM	
	INTERMITTENT STREAM	
	CHURCH	
	SCHOOL	
	CEMETERY	
	COUNTY BOUNDARY	
	STATE BOUNDARY	

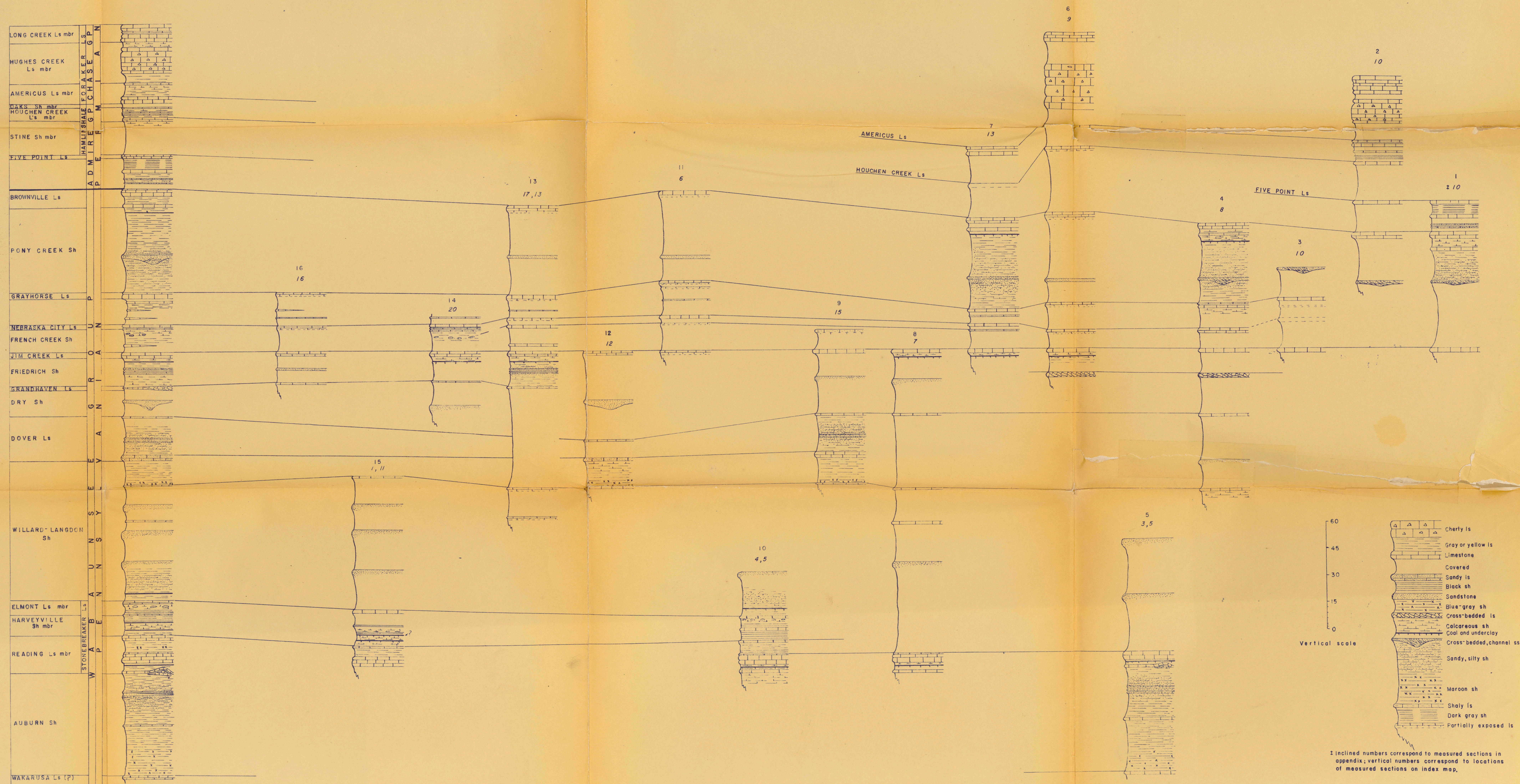


CROSS SECTION and COMPOSITE SECTION of LOWER WOLFCAMPIAN and UPPER WABAUNSEE BEDS in the FORAKER AREA



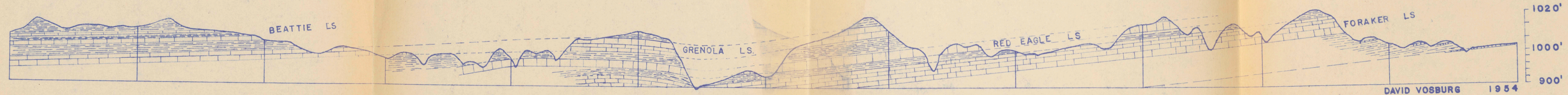
INDEX MAP SHOWING LOCATIONS OF MEASURED SECTIONS

R. CLARK TAYLOR



Inclined numbers correspond to measured sections in appendix; vertical numbers correspond to locations of measured sections on index map.



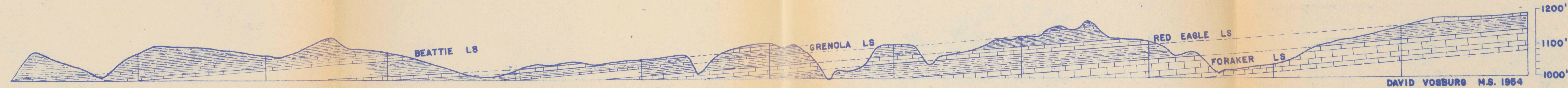


GENERAL CROSS SECTION BETWEEN TWPS. 25 & 26 N., ACROSS RNGS. 5 & 6 E., OSAGE COUNTY

BURBANK-SHIDLER AREA, OKLAHOMA

PLATE II





GENERAL CROSS SECTION BETWEEN TWPS. 26 & 27 N., ACROSS RNGS. 5 & 6 E., OSAGE COUNTY

BURBANK-SHIDLER AREA, OKLAHOMA

PLATE III