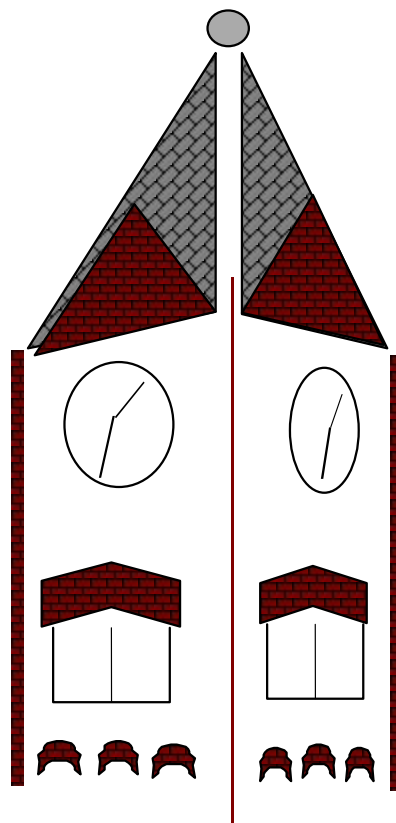


**University of Central Oklahoma**

# **Enrollment Statistics & Demographics**

**Summer 2011**



**Office of Institutional Research**

# Warning to Data Users

[Broncho Analytics](#) provides data users with the most current institutional data available from the Office of Institutional Research. These data reflect our efforts to correct for a number of data quality issues in the student information system & provide comparable time-series data. As we have transitioned to reporting from a data warehouse, our methods have evolved. Unfortunately, this might mean a report from many years ago is no longer comparable with data reported currently on Broncho Analytics. For example, past reports on student majors were based on the student's "primary major" whereas current major reports are not limited in this way.

Data users are encouraged to consult the Office of Institutional Research when comparing data from past editions of the Factbook and Demobook to current reports on [Broncho Analytics](#).

# UNIVERSITY OF CENTRAL OKLAHOMA

## Summer 2011 ENROLLMENT REPORT

### Regional University System of Oklahoma

Ms. Jan Gordon	Broken Arrow
Dr. Joe Anna Hibler	Weatherford
Mrs. Belva Howard	Tulsa
Mr. Harold Jackson	Chickasha
Mr. Michael Mitchel, Vice Chair	Alva
Mr. Terry Matlock, Secretary	Garvin
Mr. Richard Ogden	Oklahoma City
Ms. Connie Reilly, Chair	Okemah
Dr. Janet Barresi, State Superintendent of Public Instruction	Oklahoma City

Dr. Sheridan McCaffree, Executive Director

### EXECUTIVE OFFICERS

Dr. W. Roger Webb	President
Dr. Bill Radke	Provost & Vice President, Academic Affairs
Mr. Steve Kreidler	Executive Vice President
Dr. Kathryn Gage	Vice President, Student Affairs
Dr. Cynthia Rolfe	Vice President, Technology
Dr. Myron Pope	Vice President, Enrollment Management
Ms. Anne Holzberlein	Vice President, Development
Mr. Charlie Johnson	Vice President, University Relations

Prepared by the Office of Institutional Research

## TABLE OF CONTENTS

	PAGE
<u>Introduction</u>	4
<u>University Data</u>	5
<u>College of Business Administration</u>	28
<u>College of Education and Professional Studies</u>	38
<u>College of Fine Arts and Design</u>	48
<u>College of Liberal Arts</u>	58
<u>College of Mathematics and Science</u>	68
<u>Interdisciplinary Studies</u>	78
<u>College of Graduate Studies</u>	88
<u>Undeclared Majors</u>	97

# INTRODUCTION

This document is intended to serve managers in their decision making processes. There has been an effort to use data that is consistent from one semester to the same semester the next year. Where possible, trend information is provided.

FTE numbers may vary slightly because of automatic rounding by the computer. Student credit hours are sorted two ways: by student classification (for FTE calculations) or by course level (for production by department). The data sections for each college do not include students with undeclared majors or with invalid major codes.

The following bullets provide some information you may want to keep in mind while reviewing the Demographics Book:

- The increase in undeclared students results in fewer majors within each college. Students are not associated with a college until they declare a major. There is a section of reports to show the statistics for these students.
- There is a report to track students on campus by time of day. Students enrolled in institutes, independent studies, etc., are not included. Students may be counted in more than one category or college.
- Due to restructuring, Interdisciplinary Studies was added in Fall 2009. It contains the Forensic Science Institute as well as those hours generated through First-Year Experience and Leadership.

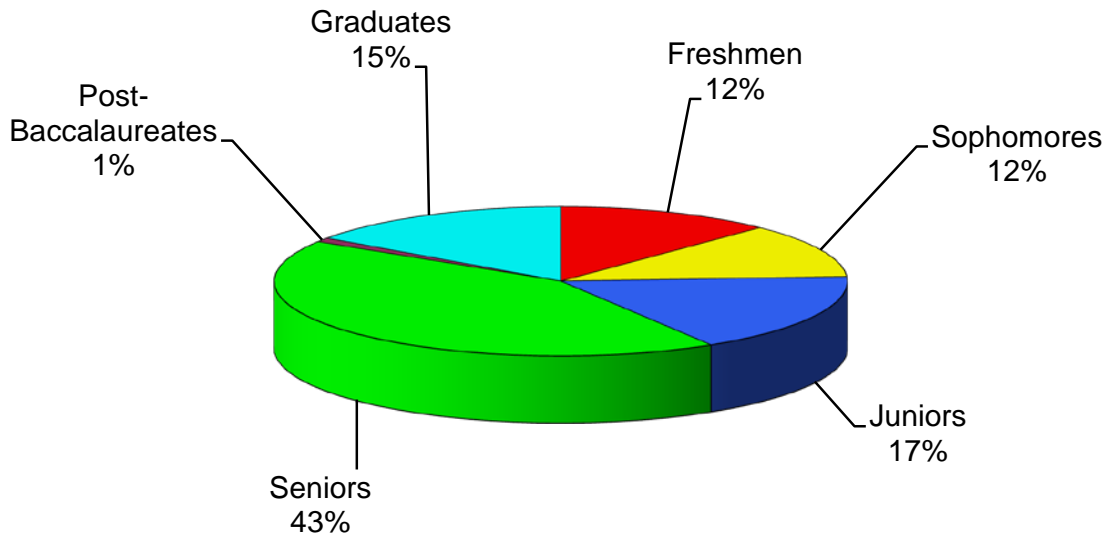
Due to the block scheduling, which allows some classes to have a later enrollment period, the summer semester is the least consistent of the three semesters in terms of preliminary enrollment numbers. The data in this book is accurate as of June 9, 2011. End of semester figures (which vary slightly from these) are transmitted to the Oklahoma State Regents for Higher Education for Unitized Data Reporting and for input into the Integrated Postsecondary Education Data System (IPEDS). This serves as a major database for higher education statistics.

## University of Central Oklahoma Summer Enrollment

	Headcount					5 Year % Diff	FTE					5 Year % Diff
	2007	2008	2009	2010	2011		2007	2008	2009	2010	2011	
Freshmen	768	716	696	759	770	0.3%	433	425	411	469	487	12.6%
Sophomores	616	579	603	692	742	20.5%	385	379	380	458	527	37.0%
Juniors	1,020	1,012	1,031	1,139	1,082	6.1%	702	690	707	815	790	12.6%
Seniors	2,189	2,294	2,347	2,496	2,681	22.5%	1,499	1,611	1,673	1,815	1,977	31.9%
Post-Baccalaureates	81	76	73	63	58	-28.4%	42	41	38	32	30	-28.6%
Undergraduates	4,674	4,677	4,750	5,149	5,333	14.1%	3,061	3,146	3,209	3,589	3,813	24.6%
Graduates	736	802	886	976	956	29.9%	583	619	687	766	800	37.2%
<b>Total</b>	<b>5,410</b>	<b>5,479</b>	<b>5,636</b>	<b>6,125</b>	<b>6,289</b>	<b>16.2%</b>	<b>3,644</b>	<b>3,765</b>	<b>3,896</b>	<b>4,355</b>	<b>4,613</b>	<b>26.6%</b>
Audit Only Students*	3	1	1	0	2	-33.3%						
Audit Credit Hours	7	3	7	0	9	28.6%						

\*Audit only students and the hours they audit are not reportable.

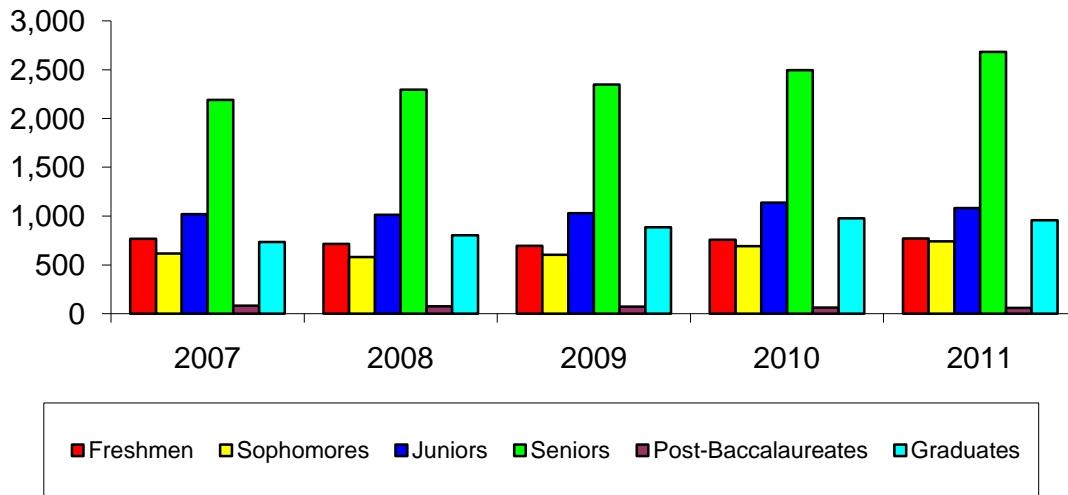
### Percentage of Total Headcount - Summer 2011



## University of Central Oklahoma Summer Headcount Enrollment Trends

	<u>2007</u>	<u>2008</u>	<u>2009</u>	<u>2010</u>	<u>2011</u>	<u>5 Year % Diff</u>
Freshmen	768	716	696	759	770	0.3%
Sophomores	616	579	603	692	742	20.5%
Juniors	1,020	1,012	1,031	1,139	1,082	6.1%
Seniors	2,189	2,294	2,347	2,496	2,681	22.5%
Post-Baccalaureates	81	76	73	63	58	-28.4%
<b>Undergraduates</b>	<b>4,674</b>	<b>4,677</b>	<b>4,750</b>	<b>5,149</b>	<b>5,333</b>	<b>14.1%</b>
Graduates	736	802	886	976	956	29.9%
<b>Total</b>	<b>5,410</b>	<b>5,479</b>	<b>5,636</b>	<b>6,125</b>	<b>6,289</b>	<b>16.2%</b>
First Time Freshmen	100	75	56	73	77	-23.0%
First Time UG Transfers	210	205	190	219	223	6.2%

### Summer Enrollment Trends



**University of Central Oklahoma**  
**Summer 2011 Enrollment**  
**Students by Time of Day\***

	<u>Morning</u>	<u>Afternoon</u>	<u>Evening</u>	<u>Weekend</u>
<u>Headcount</u>				
Freshmen	531	197	106	0
Sophomores	483	208	138	8
Juniors	571	297	226	36
Seniors	1,190	573	710	162
Post-Baccalaureates	22	6	25	1
Undergraduates	<u>2,797</u>	<u>1,281</u>	<u>1,205</u>	<u>207</u>
Graduates	415	246	256	71
<b>Grand Total</b>	<b>3,212</b>	<b>1,527</b>	<b>1,461</b>	<b>278</b>

<u>Credit Hours</u>				
Freshmen	2,136	561	332	0
Sophomores	2,040	517	421	15
Juniors	2,365	800	717	68
Seniors	4,697	1,645	2,345	323
Post-Baccalaureates	83	13	79	1
Undergraduates	<u>11,321</u>	<u>3,536</u>	<u>3,894</u>	<u>407</u>
Graduates	1,757	751	923	173
<b>Grand Total</b>	<b>13,078</b>	<b>4,287</b>	<b>4,817</b>	<b>580</b>

Full-Time Students	2,155	1,131	975	167
Part-Time Students	1,057	396	486	111
 Average Age	 25	 26	 28	 31

\*Based on CRN College and Student Classification.

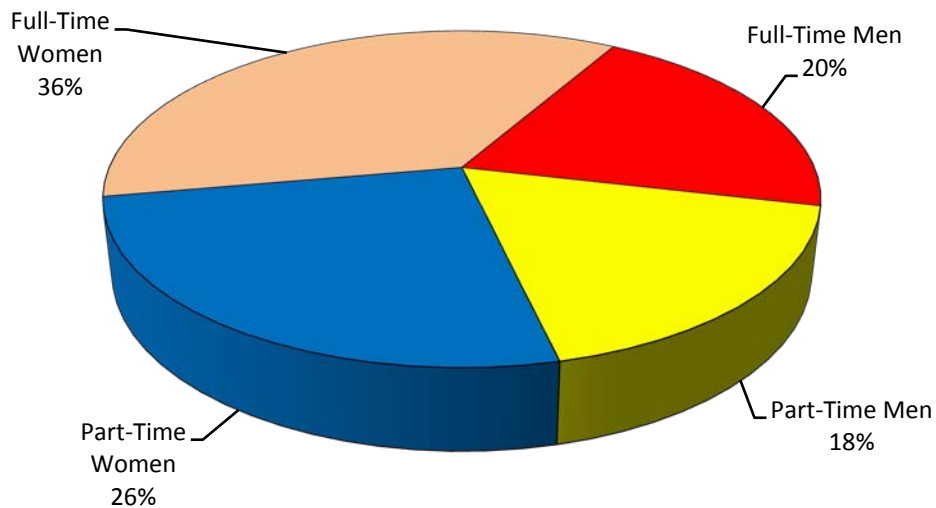


**University of Central Oklahoma**  
**Summer 2011 Enrollment**  
**By Classification and Full-Time/Part-Time Status**

	Full-Time		Part-Time		Total	
	Men	Women	Men	Women	Men	Women
Freshmen	150	197	179	244	329	441
Sophomores	177	242	125	198	302	440
Juniors	230	400	192	260	422	660
Seniors	582	937	514	648	1,096	1,585
Post-Baccalaureates	6	8	22	22	28	30
Undergraduates	1,145	1,784	1,032	1,372	2,177	3,156
Graduates	132	487	82	255	214	742
Total	1,277	2,271	1,114	1,627	2,391	3,898
<b>Grand Total</b>	<b>3,548</b>		<b>2,741</b>		<b>6,289</b>	

Percentage of Total Headcount	56.4%	43.6%	100.0%
-------------------------------	-------	-------	--------

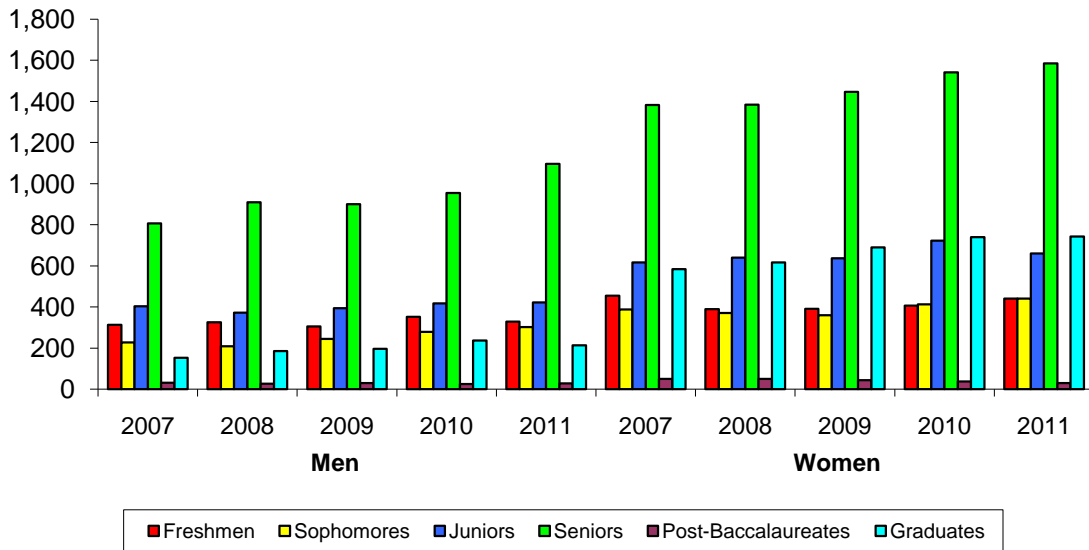
**Gender and Full/Part-Time Status**



## University of Central Oklahoma Summer Enrollment By Classification and Gender

			Men					Women					5 Year % Diff
	2007	2008	2009	2010	2011	% Diff	2007	2008	2009	2010	2011	% Diff	
Freshmen	313	326	305	352	329	5.1%	455	390	391	407	441	-3.1%	
Sophomores	228	208	244	279	302	32.5%	388	371	359	413	440	13.4%	
Juniors	403	372	394	417	422	4.7%	617	640	637	722	660	7.0%	
Seniors	806	909	900	954	1,096	36.0%	1,383	1,385	1,447	1,542	1,585	14.6%	
Post-Baccalaureates	31	26	30	25	28	-9.7%	50	50	43	38	30	-40.0%	
Graduates	152	186	196	237	214	40.8%	584	616	690	739	742	27.1%	
<b>Total</b>	<b>1,933</b>	<b>2,027</b>	<b>2,069</b>	<b>2,264</b>	<b>2,391</b>	<b>23.7%</b>	<b>3,477</b>	<b>3,452</b>	<b>3,567</b>	<b>3,861</b>	<b>3,898</b>	<b>12.1%</b>	
% of Yearly Total	36%	37%	37%	37%	38%	6.4%	64%	63%	63%	63%	62%	-3.6%	

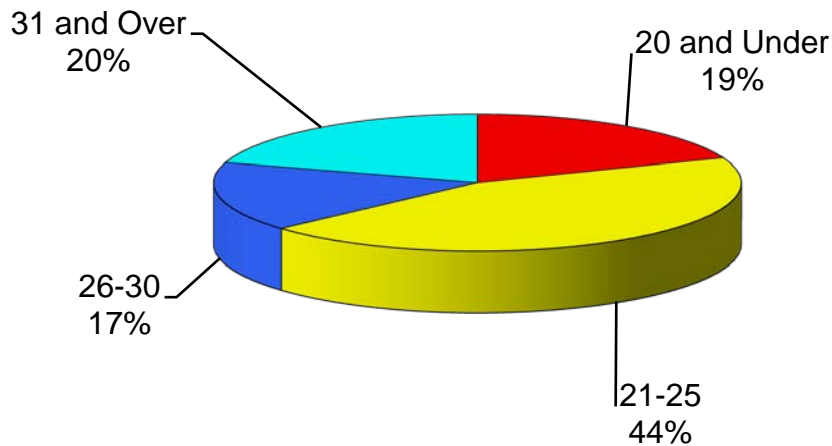
### Men/Women Comparison



**University of Central Oklahoma  
Summer Enrollment  
Age Distribution Analysis**

	<u>2007</u>	<u>2008</u>	<u>2009</u>	<u>2010</u>	<u>2011</u>	<u>5 Year Diff</u>
20 and Under	20.0%	18.1%	18.3%	18.8%	19.1%	-0.9%
21-25	47.6%	47.4%	46.7%	44.3%	44.2%	-3.4%
26-30	13.9%	15.0%	15.2%	16.2%	16.4%	2.5%
31 and Over	18.5%	19.5%	19.8%	20.7%	20.3%	1.8%
Average Age	26	26	26	26	26	0

**Age Distribution - Summer 2011**



**University of Central Oklahoma  
 Summer 2011 Enrollment  
 Ethnicity/Race Comparison**

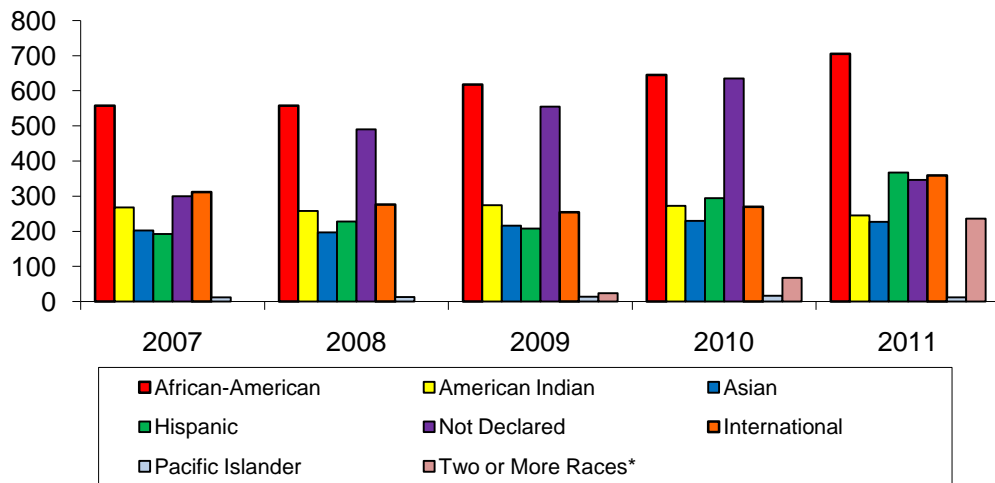
	<u>Men</u>	<u>Women</u>	<u>Total</u>	<u>% of Total</u>
Caucasian	1,444	2,347	3,791	60.3%
African-American	230	476	706	11.2%
American Indian	91	154	245	3.9%
Asian	87	144	231	3.7%
Hispanic	118	256	374	5.9%
International	184	164	348	5.5%
Pacific Islander	5	7	12	0.2%
Two or More Races	83	153	236	3.8%
Not Declared	149	197	346	5.5%
<b>Total</b>	<b>2,391</b>	<b>3,898</b>	<b>6,289</b>	<b>100.0%</b>

## University of Central Oklahoma Summer Enrollment Ethnicity/Race Comparison

	<u>2007</u>	<u>2008</u>	<u>2009</u>	<u>2010</u>	<u>2011</u>	<u>5 Year % Diff</u>
Caucasian	3,566	3,459	3,473	3,696	3,792	6.3%
African-American	558	558	618	645	705	26.3%
American Indian	268	258	274	272	245	-8.6%
Asian	202	197	216	230	227	12.4%
Hispanic	192	228	208	294	367	91.1%
International	312	276	254	270	359	15.1%
Pacific Islander	12	13	14	16	12	0.0%
Two or More Races*	---	---	24	67	236	---
Not Declared	300	490	555	635	346	15.3%
<b>Total</b>	<b>5,110</b>	<b>4,989</b>	<b>5,081</b>	<b>6,125</b>	<b>6,289</b>	<b>23.1%</b>

\* Category added to meet federal methodology.

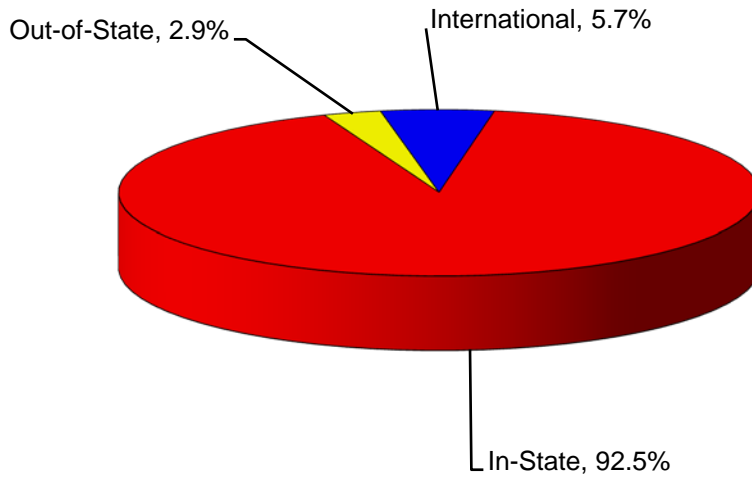
### Ethnicity/Race Comparison



## University of Central Oklahoma Summer Enrollment County, State, and Country of Origin

	<u>2007</u>	<u>2008</u>	<u>2009</u>	<u>2010</u>	<u>2011</u>	<u>Current % of Total</u>
OKC Metropolitan Statistical Area						
Canadian County	214	273	294	376	365	6.1%
Cleveland County	276	299	320	398	491	6.5%
Logan County	101	138	150	192	191	3.1%
McClain County	17	24	28	39	42	0.6%
Oklahoma County	2,263	2,389	2,782	3,238	3,366	52.9%
Pottawatomie County	58	53	79	67	62	1.1%
<b>Total MSA</b>	<b>2,929</b>	<b>3,176</b>	<b>3,653</b>	<b>4,310</b>	<b>4,517</b>	<b>70.4%</b>
All Other OK Counties	1,900	1,821	1,562	1,388	1,230	22.7%
<b>Total In-State</b>	<b>4,829</b>	<b>4,997</b>	<b>5,215</b>	<b>5,698</b>	<b>5,747</b>	<b>91.4%</b>
Out-of-State	269	206	167	157	183	2.9%
International	312	276	254	270	359	5.7%
<b>Total</b>	<b>5,410</b>	<b>5,479</b>	<b>5,636</b>	<b>6,125</b>	<b>6,289</b>	<b>100.0%</b>

**Summer 2011 Percentage by Origin**



**University of Central Oklahoma**  
**Summer Enrollment**  
**In-State Students by County**

	<u>2007</u>	<u>2008</u>	<u>2009</u>	<u>2010</u>	<u>2011</u>	Current % of Total
Adair	1	4	3	3	2	0.0%
Alfalfa	1	2	1	0	2	0.0%
Atoka	0	0	2	1	1	0.0%
Beaver	6	7	2	2	2	0.0%
Beckham	4	9	10	8	5	0.1%
Blaine	7	4	3	9	7	0.1%
Bryan	3	10	7	9	3	0.1%
Caddo	14	19	27	19	13	0.2%
Canadian	214	273	294	376	365	6.4%
Carter	26	21	31	30	27	0.5%
Cherokee	5	9	5	6	11	0.2%
Choctaw	3	6	3	4	3	0.1%
Cimaron	2	1	0	2	4	0.1%
Cleveland	276	299	320	398	491	8.5%
Coal	1	2	2	1	0	0.0%
Comanche	41	53	48	62	70	1.2%
Cotton	3	2	1	2	4	0.1%
Craig	3	2	2	2	4	0.1%
Creek	18	15	21	17	15	0.3%
Custer	14	21	17	21	23	0.4%
Delaware	4	2	2	4	2	0.0%
Dewey	0	4	1	3	2	0.0%
Ellis	0	1	1	4	3	0.1%
Garfield	28	34	42	31	31	0.5%
Garvin	10	5	9	11	14	0.2%
Grady	40	49	31	40	47	0.8%
Grant	1	5	5	4	3	0.1%
Greer	2	2	0	2	2	0.0%
Harmon	1	1	2	1	0	0.0%
Harper	2	4	3	3	1	0.0%
Haskell	1	1	1	1	2	0.0%
Hughes	3	3	1	1	1	0.0%
Jackson	10	10	17	9	19	0.3%
Jefferson	1	1	2	0	0	0.0%
Johnston	0	0	1	3	2	0.0%
Kay	40	40	35	44	31	0.5%
Kingfisher	30	40	34	44	37	0.6%
Kiowa	2	6	3	3	4	0.1%
Latimer	2	4	4	6	4	0.1%
LeFlore	5	3	7	4	6	0.1%
Lincoln	49	55	45	59	58	1.0%
Logan	101	138	150	192	191	3.3%
Love	2	3	5	5	4	0.1%

**University of Central Oklahoma**  
**Summer Enrollment**  
**In-State Students by County**

	<u>2007</u>	<u>2008</u>	<u>2009</u>	<u>2010</u>	<u>2011</u>	Current % <u>of Total</u>
Major	4	6	8	4	7	0.1%
Marshall	3	2	5	3	4	0.1%
Mayes	7	6	6	8	4	0.1%
McClain	17	24	28	39	42	0.7%
McCurtain	8	10	9	7	17	0.3%
McIntosh	8	7	7	6	10	0.2%
Murray	6	3	4	7	5	0.1%
Muskogee	15	22	22	32	30	0.5%
Noble	6	9	5	9	7	0.1%
Nowata	3	1	1	1	1	0.0%
Okfuskee	2	1	2	5	0	0.0%
Oklahoma	2,263	2,389	2,782	3,238	3,366	58.6%
Okmulgee	16	16	19	18	18	0.3%
Osage	10	9	9	6	13	0.2%
Ottawa	3	3	4	7	9	0.2%
Pawnee	3	5	2	7	5	0.1%
Payne	43	39	57	56	54	0.9%
Pittsburg	21	18	13	13	21	0.4%
Ponotoc	11	14	15	13	15	0.3%
Pottawatomie	58	53	79	67	62	1.1%
Pushmataha	2	0	0	2	1	0.0%
Roger Mills	1	1	0	1	2	0.0%
Rogers	19	11	28	28	31	0.5%
Seminole	8	10	7	11	10	0.2%
Sequoyah	7	5	4	6	3	0.1%
Stephens	20	33	32	40	45	0.8%
Texas	10	3	6	8	9	0.2%
Tillman	1	0	4	3	4	0.1%
Tulsa	117	129	137	144	149	2.6%
Wagoner	9	12	9	16	15	0.3%
Washington	13	17	15	20	28	0.5%
Washita	6	3	2	4	5	0.1%
Woods	8	8	5	8	5	0.1%
Woodward	6	12	11	11	11	0.2%
Unknown County	1,119	946	678	404	223	3.9%
<b>Total</b>	<b>4,829</b>	<b>4,997</b>	<b>5,215</b>	<b>5,698</b>	<b>5,747</b>	<b>100.0%</b>
Counties Represented	73	73	73	75	73	



**University of Central Oklahoma**  
**Summer Enrollment**  
**Out-of-State Students by State**

	<u>2007</u>	<u>2008</u>	<u>2009</u>	<u>2010</u>	<u>2011</u>	Current % of Total
Alabama	1	0	1	0	0	0.0%
Alaska	2	1	0	2	2	1.3%
Arizona	1	2	4	2	1	1.3%
Arkansas	8	6	4	7	6	4.5%
California	17	9	9	8	13	5.1%
Colorado	11	7	3	3	1	1.9%
Connecticut	1	0	0	0	0	0.0%
Delaware	0	0	0	0	0	0.0%
Florida	7	5	5	3	9	1.9%
Georgia	5	6	3	4	2	2.5%
Hawaii	1	3	1	2	2	1.3%
Idaho	0	1	0	0	0	0.0%
Illinois	3	6	9	8	8	5.1%
Indiana	0	1	0	2	1	1.3%
Iowa	3	1	0	1	2	0.6%
Kansas	19	18	12	8	9	5.1%
Kentucky	1	0	1	1	1	0.6%
Louisiana	4	4	3	1	5	0.6%
Maine	1	1	0	0	0	0.0%
Maryland	1	3	2	3	3	1.9%
Massachusetts	2	0	1	0	0	0.0%
Michigan	0	3	3	2	1	1.3%
Minnesota	0	1	1	4	2	2.5%
Mississippi	5	0	0	0	0	0.0%
Missouri	10	9	9	9	11	5.7%
Montana	0	0	0	1	1	0.6%
Nebraska	2	1	2	1	1	0.6%
Nevada	1	1	0	1	0	0.6%
New Hampshire	0	0	1	1	0	0.6%
New Jersey	0	0	1	1	1	0.6%
New Mexico	4	1	1	1	1	0.6%
New York	3	3	0	1	2	0.6%
North Carolina	1	2	3	3	4	1.9%
North Dakota	1	0	0	0	0	0.0%
Ohio	5	4	3	5	4	3.2%
Oregon	0	0	0	1	1	0.6%
Pennsylvania	2	1	1	0	0	0.0%
Rhode Island	1	0	0	0	0	0.0%
South Carolina	2	1	0	1	1	0.6%
South Dakota	2	1	1	1	0	0.6%
Tennessee	2	1	4	2	5	1.3%
Texas	75	52	42	45	63	28.7%
Utah	0	0	1	0	1	0.0%

**University of Central Oklahoma**  
**Summer Enrollment**  
**Out-of-State Students by State**

	<u>2007</u>	<u>2008</u>	<u>2009</u>	<u>2010</u>	<u>2011</u>	Current % of Total
Vermont	0	0	0	0	0	0.0%
Virginia	2	3	4	4	2	2.5%
Washington	2	3	3	1	2	0.6%
West Virginia	0	0	0	0	0	0.0%
Wisconsin	2	1	1	0	2	0.0%
Wyoming	4	1	0	1	1	0.6%
Military - Americas	7	6	6	3	4	1.9%
Military - Europe	6	3	1	0	0	0.0%
Military - Pacific	0	0	0	0	0	0.0%
Unknown State	42	34	21	13	8	8.3%
<b>Total</b>	<b>269</b>	<b>206</b>	<b>167</b>	<b>157</b>	<b>183</b>	<b>100.0%</b>
States Represented	43	38	35	32	35	

Oklahoma is not in the list above but is counted in the States Represented.

**University of Central Oklahoma**  
**Summer Enrollment**  
**International Trends by Country**

	<u>2007</u>	<u>2008</u>	<u>2009</u>	<u>2010</u>	<u>2011</u>	Current % of Total
Albania	1	0	1	0	1	0.3%
Argentina	0	0	0	0	1	0.3%
Bahamas	0	0	0	0	1	0.3%
Bahrain	1	0	0	0	0	0.0%
Bangladesh	3	2	3	2	1	0.3%
Belarus	1	0	1	1	1	0.3%
Belize	0	1	1	1	0	0.0%
Benin (Dahomey)	0	0	0	2	3	0.8%
Bolivia	1	1	0	0	0	0.0%
Botswana	0	0	0	1	2	0.6%
Brazil	2	0	0	1	1	0.3%
Bulgaria	7	10	5	2	1	0.3%
Cambodia	0	0	0	0	1	0.3%
Cameroon	1	0	1	8	12	3.3%
Canada	2	2	2	2	1	0.3%
Chile	0	0	0	0	1	0.3%
China	4	10	16	33	54	15.0%
Columbia	3	2	3	1	0	0.0%
Congo	1	1	0	0	0	0.0%
Cote D'Ivoire (Ivory Coast)	0	1	2	3	2	0.6%
Croatia	0	0	0	0	1	0.3%
Denmark	0	0	1	0	1	0.3%
Ecuador	2	0	0	0	0	0.0%
El Salvador	0	0	0	1	1	0.3%
England	0	0	1	2	3	0.8%
Ethiopia	0	1	0	0	0	0.0%
Gabon	0	0	0	0	1	0.3%
Germany	1	0	0	1	0	0.0%
Ghana	2	4	2	2	2	0.6%
Honduras	2	2	1	0	1	0.3%
Hong Kong	3	2	4	2	1	0.3%
India	11	8	4	4	7	1.9%
Indonesia	5	4	6	6	5	1.4%
Iran	1	1	2	1	1	0.3%
Italy	0	0	0	1	1	0.3%
Jamaica	0	0	2	0	0	0.0%
Japan	95	77	35	14	18	5.0%
Jordan	0	0	0	0	1	0.3%
Kenya	8	6	1	8	2	0.6%
Korea	17	31	44	51	43	12.0%
Macau	1	0	1	1	0	0.0%
Macedonia	1	1	1	0	1	0.3%
Malaysia	9	7	10	12	15	4.2%
Mauritius	0	0	0	1	0	0.0%
Mexico	1	1	0	0	1	0.3%
Moldovia, Republic of	1	0	1	1	0	0.0%
Mongolia	1	0	0	0	2	0.6%
Morocco	5	0	4	2	2	0.6%
Myanmar	1	0	0	0	0	0.0%
Nepal	41	27	14	8	24	6.7%
New Zealand	1	0	0	0	0	0.0%
Niger	1	3	2	1	1	0.3%

**University of Central Oklahoma  
Summer Enrollment  
International Trends by Country**

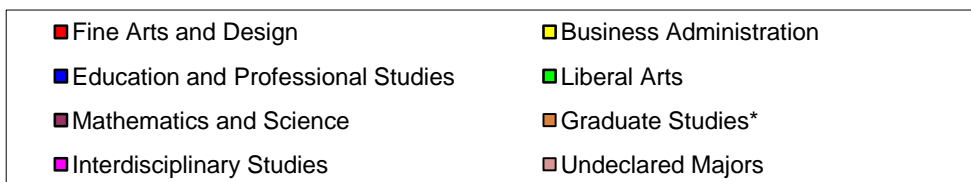
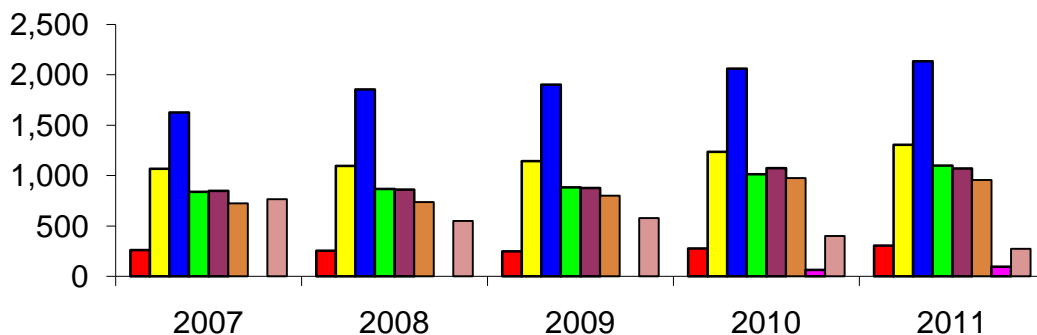
	<u>2007</u>	<u>2008</u>	<u>2009</u>	<u>2010</u>	<u>2011</u>	Current % of Total
Nigeria	7	3	8	5	8	2.2%
Norway	0	1	1	1	0	0.0%
Oman	1	1	0	0	0	0.0%
Pakistan	10	12	11	7	7	1.9%
Panama	1	0	0	1	1	0.3%
Peru	0	1	1	0	0	0.0%
Philippines	0	0	0	1	0	0.0%
Poland	1	0	0	0	0	0.0%
Portugal	1	0	0	0	0	0.0%
Romania	0	1	1	1	0	0.0%
Russia	2	1	1	0	1	0.3%
Rwanda	0	0	0	0	3	0.8%
Saudi Arabia	8	17	23	43	85	23.7%
Scotland	0	0	0	0	1	0.3%
Senegal	0	1	1	1	1	0.3%
Singapore	0	0	0	0	1	0.3%
Slovakia	0	0	1	0	0	0.0%
South Africa	1	1	0	1	2	0.6%
Spain	1	2	3	1	0	0.0%
Sri Lanka	3	1	2	2	2	0.6%
Swaziland	0	0	0	1	1	0.3%
Sweden	0	0	0	0	1	0.3%
Taiwan	21	23	14	14	6	1.7%
Thailand	1	1	1	0	1	0.3%
Togo	0	0	0	1	0	0.0%
Turkey	3	0	4	2	0	0.0%
Uganda	3	0	1	1	4	1.1%
Uzbekistan	0	0	1	0	0	0.0%
Venezuela	2	1	1	0	3	0.8%
Vietnam	3	3	6	8	10	2.8%
Yugoslavia	1	0	0	0	0	0.0%
Zambia	2	0	0	1	1	0.3%
Zimbabwe	3	1	2	1	2	0.6%
Unknown	0	0	0	1	0	0.0%
<b>Total</b>	<b>312</b>	<b>276</b>	<b>254</b>	<b>270</b>	<b>359</b>	<b>100.0%</b>
Countries Represented	54	41	48	50	58	

## University of Central Oklahoma Summer Headcount by Colleges

	<u>2007</u>	<u>2008</u>	<u>2009</u>	<u>2010</u>	<u>2011</u>	<u>5 Year % Diff</u>
Business Administration	1,068	1,096	1,144	1,235	1,307	22.4%
Education and Professional Studies	1,627	1,854	1,903	2,062	2,134	31.2%
Fine Arts and Design	261	253	249	277	306	17.2%
Liberal Arts	840	866	884	1,014	1,100	31.0%
Mathematics and Science	848	860	877	1,074	1,072	26.4%
Interdisciplinary Studies	---	---	---	64	96	---
Undeclared Majors	766	550	579	399	274	-64.2%
<b>Total</b>	<b>5,410</b>	<b>5,479</b>	<b>5,636</b>	<b>6,125</b>	<b>6,289</b>	<b>16.2%</b>
Graduate Studies*	724	736	802	976	956	32.0%

\* Included in above totals.

### Enrollment Trends



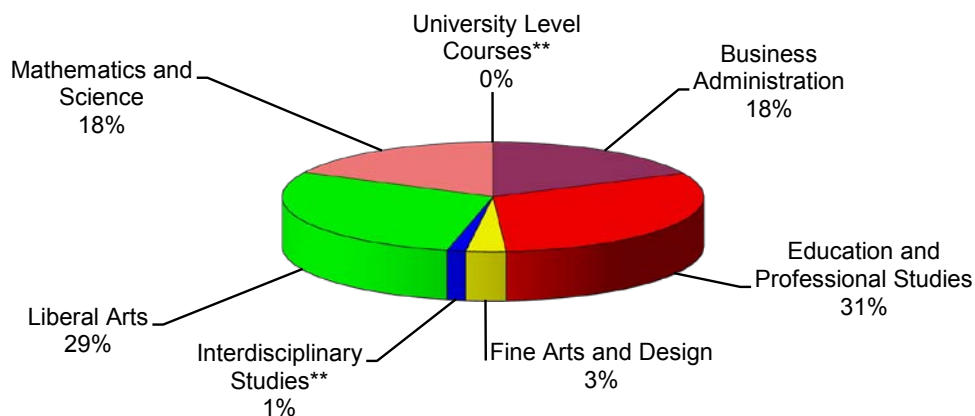
## University of Central Oklahoma Student Credit Hours Produced by College\*

	Summer 2007	Summer 2008	Summer 2009	Summer 2010	Summer 2011	5 Year % Diff
<b>Business Administration</b>						
Credit Hours	5,472	5,590	5,718	6,049	5,977	9.2%
Percent	20.7%	20.5%	20.3%	19.2%	17.9%	
<b>Education and Professional Studies</b>						
Credit Hours	8,426	8,490	8,695	9,612	10,355	22.9%
Percent	31.9%	31.2%	30.9%	30.6%	31.1%	
<b>Fine Arts and Design</b>						
Credit Hours	836	900	844	863	1,018	21.8%
Percent	3.2%	3.3%	3.0%	2.7%	3.1%	
<b>Interdisciplinary Studies**</b>						
Credit Hours	---	---	---	409	474	---
Percent	---	---	---	1.3%	1.4%	
<b>Liberal Arts</b>						
Credit Hours	6,990	7,592	7,709	8,983	9,613	37.5%
Percent	26.4%	27.9%	27.4%	28.6%	28.8%	
<b>Mathematics and Science</b>						
Credit Hours	4,719	4,621	5,026	5,527	5,888	24.8%
Percent	17.8%	17.0%	17.9%	17.6%	17.7%	
<b>University Level Courses**</b>						
Credit Hours	0	61	132	0	0	0.0%
Percent	0.0%	0.2%	0.5%	0.0%	0.0%	
<b>University Total:</b>						
Credit Hours	<b>26,443</b>	<b>27,254</b>	<b>28,124</b>	<b>31,443</b>	<b>33,325</b>	26.0%
Percent	100.0%	100.0%	100.0%	100.0%	100.0%	

\*Audit hours are included.

\*\* Due to restructuring, university courses have been reassigned to Interdisciplinary Studies.

### Percentage of Credit Hours - Summer 2011



## Student Credit Hour Production\*

### Five Year Comparison

	Summer 2007	Summer 2008	Summer 2009	Summer 2010	Summer 2011	5 Year % Diff
<b><u>Business Administration</u></b>						
<b>Accounting</b>						
Undergraduate	954	1,012	987	1,096	1,134	18.9%
Graduate	3	0	0	15	6	100.0%
<b>Dept Total</b>	<b>957</b>	<b>1,012</b>	<b>987</b>	<b>1,111</b>	<b>1,140</b>	<b>19.1%</b>
<b>Economics and International Business**</b>						
Undergraduate	662	585	591	605	630	-4.8%
Graduate	3	0	24	3	0	-100.0%
<b>Dept Total</b>	<b>665</b>	<b>585</b>	<b>615</b>	<b>608</b>	<b>630</b>	<b>-5.3%</b>
<b>Finance**</b>						
Undergraduate	601	1,053	1,221	1,195	1,242	106.7%
Graduate	0	0	0	0	0	0.0%
<b>Dept Total</b>	<b>601</b>	<b>1,053</b>	<b>1,221</b>	<b>1,195</b>	<b>1,242</b>	<b>106.7%</b>
<b>Information Systems &amp; Operations Management</b>						
Undergraduate	711	567	715	570	630	-11.4%
Graduate	3	0	0	0	0	-100.0%
<b>Dept Total</b>	<b>714</b>	<b>567</b>	<b>715</b>	<b>570</b>	<b>630</b>	<b>-11.8%</b>
<b>Management**</b>						
Undergraduate	664	925	981	1,128	950	43.1%
Graduate	42	280	380	460	375	792.9%
<b>Dept Total</b>	<b>706</b>	<b>1,205</b>	<b>1,361</b>	<b>1,588</b>	<b>1,325</b>	<b>87.7%</b>
<b>Marketing**</b>						
Undergraduate	1,059	1,168	810	962	1,004	-5.2%
Graduate	12	0	3	0	0	-100.0%
<b>Dept Total</b>	<b>1,071</b>	<b>1,168</b>	<b>813</b>	<b>962</b>	<b>1,004</b>	<b>-6.3%</b>
<b>Military Science</b>						
Undergraduate	66	0	6	15	6	-100.0%
Graduate	0	0	0	0	0	0.0%
<b>Dept Total</b>	<b>66</b>	<b>0</b>	<b>6</b>	<b>15</b>	<b>6</b>	<b>-90.9%</b>
<b>General Business**</b>						
Undergraduate	488	0	0	0	0	-100.0%
Graduate	204	0	0	0	0	-100.0%
<b>Dept Total</b>	<b>692</b>	<b>0</b>	<b>0</b>	<b>0</b>	<b>0</b>	<b>-100.0%</b>
** Due to restructuring, General Business courses have been reassigned to the Economics, Finance, Management, and Marketing departments.						
<b>Business Administration Total:</b>						
Undergraduate	5,205	5,310	5,311	5,571	5,596	7.5%
Graduate	267	280	407	478	381	42.7%
<b>Business Administration Grand Total</b>	<b>5,472</b>	<b>5,590</b>	<b>5,718</b>	<b>6,049</b>	<b>5,977</b>	<b>9.2%</b>
<b><u>Education and Professional Studies</u></b>						
<b>Advanced Professional Services</b>						
Undergraduate	136	114	126	126	192	41.2%
Graduate	522	558	768	777	999	91.4%
<b>Dept Total</b>	<b>658</b>	<b>672</b>	<b>894</b>	<b>903</b>	<b>1,191</b>	<b>81.0%</b>
<b>Curriculum &amp; Instruction</b>						
Undergraduate	567	529	711	557	604	6.5%
Graduate	159	400	325	424	335	110.7%
<b>Dept Total</b>	<b>726</b>	<b>929</b>	<b>1,036</b>	<b>981</b>	<b>939</b>	<b>29.3%</b>

## Student Credit Hour Production\*

### Five Year Comparison

	Summer 2007	Summer 2008	Summer 2009	Summer 2010	Summer 2011	5 Year % Diff
<b>Human Environmental Sciences</b>						
Undergraduate	1,109	1,139	1,346	1,139	1,625	46.5%
Graduate	202	282	230	254	288	42.6%
<b>Dept Total</b>	<b>1,311</b>	<b>1,421</b>	<b>1,576</b>	<b>1,393</b>	<b>1,913</b>	<b>45.9%</b>
<b>Kinesiology &amp; Health Studies</b>						
Undergraduate	1,568	1,313	1,275	1,405	1,135	-27.6%
Graduate	69	85	93	121	157	127.5%
<b>Dept Total</b>	<b>1,637</b>	<b>1,398</b>	<b>1,368</b>	<b>1,526</b>	<b>1,292</b>	<b>-21.1%</b>
<b>Adult Education Safety Sciences</b>						
Undergraduate	1,207	1,316	1,076	1,650	1,880	55.8%
Graduate	264	276	340	364	307	16.3%
<b>Dept Total</b>	<b>1,471</b>	<b>1,592</b>	<b>1,416</b>	<b>2,014</b>	<b>2,187</b>	<b>48.7%</b>
<b>Professional Teacher Education</b>						
Undergraduate	271	200	176	217	221	-18.5%
Graduate	407	377	375	508	546	34.2%
<b>Dept Total</b>	<b>678</b>	<b>577</b>	<b>551</b>	<b>725</b>	<b>767</b>	<b>13.1%</b>
<b>Psychology</b>						
Undergraduate	777	903	771	1,006	951	22.4%
Graduate	438	305	408	399	378	-13.7%
<b>Dept Total</b>	<b>1,215</b>	<b>1,208</b>	<b>1,179</b>	<b>1,405</b>	<b>1,329</b>	<b>9.4%</b>
<b>Special Services</b>						
Undergraduate	298	285	285	249	250	-16.1%
Graduate	432	408	390	416	487	12.7%
<b>Dept Total</b>	<b>730</b>	<b>693</b>	<b>675</b>	<b>665</b>	<b>737</b>	<b>1.0%</b>
<b>Education and Professional Studies Total:</b>						
Undergraduate	5,933	5,799	5,766	6,349	6,858	15.6%
Graduate	2,493	2,691	2,929	3,263	3,497	40.3%
<b>Education and Professional Studies Grand Total</b>	<b>8,426</b>	<b>8,490</b>	<b>8,695</b>	<b>9,612</b>	<b>10,355</b>	<b>22.9%</b>
<b>Fine Arts and Design</b>						
<b>Academy of Contemporary Music</b>						
Undergraduate	---	---	---	34	22	---
Graduate	---	---	---	0	0	---
<b>Dept Total</b>	---	---	---	<b>34</b>	<b>22</b>	---
<b>Art</b>						
Undergraduate	402	360	291	220	155	-61.4%
Graduate	3	6	3	3	0	-100.0%
<b>Dept Total</b>	<b>405</b>	<b>366</b>	<b>294</b>	<b>223</b>	<b>155</b>	<b>-61.7%</b>
<b>Dance**</b>						
Undergraduate	---	---	---	30	38	---
Graduate	---	---	---	0	2	---
<b>Dept Total</b>	---	---	---	<b>30</b>	<b>40</b>	---
<b>Design</b>						
Undergraduate	38	82	118	116	229	502.6%
Graduate	15	12	22	25	21	40.0%
<b>Dept Total</b>	<b>53</b>	<b>94</b>	<b>140</b>	<b>141</b>	<b>250</b>	<b>371.7%</b>
<b>School of Music</b>						
Undergraduate	173	236	211	273	402	132.4%
Graduate	71	79	153	90	99	39.4%
<b>Dept Total</b>	<b>244</b>	<b>315</b>	<b>364</b>	<b>363</b>	<b>501</b>	<b>105.3%</b>



## Student Credit Hour Production\*

### Five Year Comparison

	Summer 2007	Summer 2008	Summer 2009	Summer 2010	Summer 2011	5 Year % Diff
<b>Theatre Arts**</b>						
Undergraduate	---	---	---	72	50	---
Graduate	---	---	---	0	0	---
<b>Dept Total</b>	---	---	---	72	50	---
<b>Theatre, Dance, and Media Arts**</b>						
Undergraduate	130	125	40	0	0	-100.0%
Graduate	4	0	6	0	0	-100.0%
<b>Dept Total</b>	134	125	46	0	0	-100.0%
** Due to restructuring, Dance and Theatre Arts are now two separate departments.						
<b>Fine Arts and Design Total:</b>						
Undergraduate	743	803	660	745	896	20.6%
Graduate	93	97	184	118	122	31.2%
<b>Fine Arts and Design Grand Total</b>	836	900	844	863	1,018	21.8%
<b>Interdisciplinary Studies</b>						
<b>Forensic Science Institute**</b>						
Undergraduate	---	---	---	168	234	---
Graduate	---	---	---	52	49	---
<b>Dept Total</b>	0	0	0	220	283	---
<b>Leadership***</b>						
Undergraduate	---	---	---	165	173	---
Graduate	---	---	---	0	0	---
<b>Dept Total</b>	0	0	0	165	173	---
<b>First-Year Experience***</b>						
Undergraduate	---	---	---	24	18	---
Graduate	---	---	---	0	0	---
<b>Dept Total</b>	0	0	0	24	18	---
** Due to restructuring, Forensic Science courses were removed from Chemistry.						
*** Due to restructuring, university courses have been reassigned to Interdisciplinary Studies.						
<b>Interdisciplinary Studies Total:</b>						
Undergraduate	---	---	---	357	425	---
Graduate	---	---	---	52	49	---
<b>Interdisciplinary Studies Grand Total</b>	---	---	---	409	474	---
<b>Liberal Arts</b>						
<b>Criminal Justice**</b>						
Undergraduate	---	---	---	---	417	---
Graduate	---	---	---	---	102	---
<b>Dept Total</b>	0	0	0	0	519	---
<b>English</b>						
Undergraduate	1,173	1,632	1,308	1,590	1,395	18.9%
Graduate	201	164	178	168	112	-44.3%
<b>Dept Total</b>	1,374	1,796	1,486	1,758	1,507	9.7%
<b>History &amp; Geography</b>						
Undergraduate	885	940	936	1,041	1,245	40.7%
Graduate	46	56	76	114	58	26.1%
<b>Dept Total</b>	931	996	1,012	1,155	1,303	40.0%
<b>Humanities &amp; Philosophy</b>						
Undergraduate	927	784	975	1,060	1,167	25.9%
Graduate	0	3	0	8	0	---
<b>Dept Total</b>	927	787	975	1,068	1,167	25.9%
<b>Mass Communication</b>						
Undergraduate	1,406	1,564	1,526	1,758	1,890	100.0%
Graduate	33	18	0	0	0	100.0%
<b>Dept Total</b>	1,439	1,582	1,526	1,758	1,890	100.0%

## Student Credit Hour Production\*

### Five Year Comparison

	Summer 2007	Summer 2008	Summer 2009	Summer 2010	Summer 2011	5 Year % Diff
<b>Modern Languages, Literatures, &amp; Cultural Studies</b>						
Undergraduate	800	822	969	1,193	1,249	56.1%
Graduate	0	0	0	0	0	0.0%
<b>Dept Total</b>	<b>800</b>	<b>822</b>	<b>969</b>	<b>1,193</b>	<b>1,249</b>	<b>56.1%</b>
<b>Political Science</b>						
Undergraduate	480	489	492	681	769	60.2%
Graduate	1	3	6	6	66	6500.0%
<b>Dept Total</b>	<b>481</b>	<b>492</b>	<b>498</b>	<b>687</b>	<b>835</b>	<b>73.6%</b>
<b>Sociology &amp; Substance Abuse Studies**</b>						
Undergraduate	---	---	---	---	1,059	---
Graduate	---	---	---	---	84	---
<b>Dept Total</b>	<b>0</b>	<b>0</b>	<b>0</b>	<b>0</b>	<b>1,143</b>	<b>---</b>
<b>Sociology, Criminal Justice, &amp; Substance Abuse Studies**</b>						
Undergraduate	993	1,084	1,180	1,238	0	-100.0%
Graduate	45	33	63	126	0	-100.0%
<b>Dept Total</b>	<b>1,038</b>	<b>1,117</b>	<b>1,243</b>	<b>1,364</b>	<b>0</b>	<b>-100.0%</b>
** Due to restructuring, Criminal Justice and Sociology & Substance Abuse Studies are now two separate departments.						
<b>Liberal Arts Total:</b>						
Undergraduate	6,664	7,315	7,386	8,561	9,191	37.9%
Graduate	326	277	323	422	422	29.4%
<b>Liberal Arts Grand Total</b>	<b>6,990</b>	<b>7,592</b>	<b>7,709</b>	<b>8,983</b>	<b>9,613</b>	<b>37.5%</b>
<b>Mathematics and Science</b>						
<b>Biology</b>						
Undergraduate	1,417	1,516	1,644	1,809	1,830	29.1%
Graduate	14	12	25	21	1	-92.9%
<b>Dept Total</b>	<b>1,431</b>	<b>1,528</b>	<b>1,669</b>	<b>1,830</b>	<b>1,831</b>	<b>28.0%</b>
<b>Chemistry**</b>						
Undergraduate	819	857	899	997	895	9.3%
Graduate	69	50	16	0	0	-100.0%
<b>Dept Total</b>	<b>888</b>	<b>907</b>	<b>915</b>	<b>997</b>	<b>895</b>	<b>0.8%</b>
** Due to restructuring, Forensic Science courses have been reassigned to the Forensic Science Department.						
<b>Computer Science</b>						
Undergraduate	189	195	149	282	201	6.3%
Graduate	0	0	0	0	0	0.0%
<b>Dept Total</b>	<b>189</b>	<b>195</b>	<b>149</b>	<b>282</b>	<b>201</b>	<b>6.3%</b>
<b>Engineering &amp; Physics</b>						
Undergraduate	623	605	510	530	560	-10.1%
Graduate	0	0	4	1	2	---
<b>Dept Total</b>	<b>623</b>	<b>605</b>	<b>514</b>	<b>531</b>	<b>562</b>	<b>-9.8%</b>
<b>Funeral Service</b>						
Undergraduate	56	66	294	416	473	744.6%
Graduate	0	0	0	0	0	0.0%
<b>Dept Total</b>	<b>56</b>	<b>66</b>	<b>294</b>	<b>416</b>	<b>473</b>	<b>744.6%</b>

**Student Credit Hour Production\***  
**Five Year Comparison**

	Summer 2007	Summer 2008	Summer 2009	Summer 2010	Summer 2011	5 Year % Diff
<b>Mathematics &amp; Statistics</b>						
Undergraduate	1,244	1,122	1,326	1,284	1,689	35.8%
Graduate	12	4	17	11	15	25.0%
<b>Dept Total</b>	<b>1,256</b>	<b>1,126</b>	<b>1,343</b>	<b>1,295</b>	<b>1,704</b>	<b>35.7%</b>
<b>Nursing</b>						
Undergraduate	276	194	142	176	222	-19.6%
Graduate	0	0	0	0	0	-100.0%
<b>Dept Total</b>	<b>276</b>	<b>194</b>	<b>142</b>	<b>176</b>	<b>222</b>	<b>-19.6%</b>
<b>Mathematics and Science Total:</b>						
Undergraduate	4,624	4,555	4,964	5,494	5,870	26.9%
Graduate	95	66	62	33	18	-81.1%
<b>Mathematics and Science Grand Total</b>	<b>4,719</b>	<b>4,621</b>	<b>5,026</b>	<b>5,527</b>	<b>5,888</b>	<b>24.8%</b>
<b>University Level Courses**</b>	<b>0</b>	<b>61</b>	<b>132</b>	<b>0</b>	<b>0</b>	<b>0.0%</b>
** Due to restructuring, university courses have been reassigned to Interdisciplinary Studies.						
<b>University Total:</b>						
Undergraduate	23,169	23,843	24,219	27,077	28,836	24.5%
Graduate	3,274	3,411	3,905	4,366	4,489	37.1%
<b>University Grand Total</b>	<b>26,443</b>	<b>27,254</b>	<b>28,124</b>	<b>31,443</b>	<b>33,325</b>	<b>26.0%</b>

**University of Central Oklahoma**  
**Summer 2011 Enrollment**  
**Part of Term and Course Type\***

	<u>Block 1</u>	<u>Block 2</u>	<u>Full Term</u>	<u>Intersession</u>	<u>Irregular</u>
<u>Number of Sections</u>					
Undergraduate	120	85	287	60	27
Graduate	50	37	86	20	18
<b>Total</b>	<b>170</b>	<b>122</b>	<b>373</b>	<b>80</b>	<b>45</b>
<u>Undergraduate Enrollment</u>					
B-Lab	22	65	161	0	0
C-Lecture Lab	9	5	19	0	0
CL-Clinical Lab	0	0	22	0	0
HYB-Hybrid	15	17	119	33	21
IVE-Interactive Video	0	0	0	0	0
L-Lecture	1,661	1,294	2,504	247	136
LCR-Lab with Credit	0	0	140	0	0
R-Recitation/Lab	0	6	26	0	0
WWW-World Wide Web	449	211	1,353	188	0
XAM-Applied Music	0	0	0	0	0
XDR-Directed Reading	0	0	0	0	0
XFS-Field Study	0	5	42	0	0
XI-Institute	0	0	0	252	29
XIN-Internship	0	0	137	0	1
XIS-Independent Study	3	0	25	0	1
XP-Practicum	20	0	77	4	0
XS-Seminar	62	48	43	220	62
XST-Study Tour	0	0	0	56	17
XSU-Studio Art	0	21	13	0	0
XTA-Advanced Topics	56	78	18	97	29
XTO-Topics	23	19	7	15	0
XW-Workshop	0	3	0	0	0
No Type Specified	0	0	0	0	0
<b>Total</b>	<b>2,320</b>	<b>1,772</b>	<b>4,706</b>	<b>1,112</b>	<b>296</b>
<u>Graduate Enrollment</u>					
B-Lab	0	4	0	0	0
C-Lecture Lab	0	11	0	0	5
HYB-Hybrid	17	20	34	0	0
IVE-Interactive Video	0	0	0	0	0
L-Lecture	361	281	241	26	66
LCR-Lab with Credit	0	0	0	0	0
WWW-World Wide Web	73	16	35	10	0
XAM-Applied Music	0	0	0	0	0
XDR-Directed Reading	0	0	0	0	0
XFS Field Study	0	4	10	0	0
XGP-Graduate Project	0	0	1	0	0
XI-Institute	0	0	0	41	3
XIN-Internship	1	14	18	0	0
XIS-Independent Study	4	0	13	0	1
XP-Practicum	0	0	54	0	0
XS-Seminar	29	29	17	32	51
XSP-Graduate Special Topics	0	0	0	0	0
XST-Study Tour	0	0	0	0	12
XSU-Studio Art	0	0	0	0	0
XT-Thesis	2	0	25	0	1
XTO-Topics	0	0	0	0	0
XW-Workshop	1	0	1	0	2
No Type Specified	0	0	0	0	0
<b>Total</b>	<b>488</b>	<b>379</b>	<b>449</b>	<b>109</b>	<b>141</b>

# **College of Business Administration**

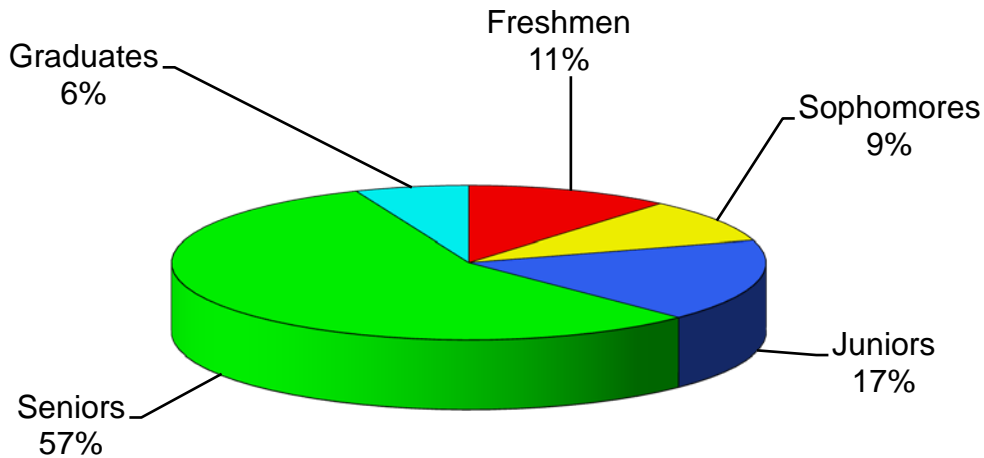
**Summer 2011**

## College of Business Administration Summer Enrollment

	Headcount					5 Year % Diff	FTE					5 Year % Diff
	2007	2008	2009	2010	2011		2007	2008	2009	2010	2011	
Freshmen	84	94	84	107	146	73.8%	52	59	45	69	89	71.2%
Sophomores	107	90	100	119	120	12.1%	72	61	57	72	84	16.7%
Juniors	233	214	238	238	225	-3.4%	160	145	165	167	156	-2.5%
Seniors	582	637	659	672	735	26.3%	400	440	458	480	533	33.3%
Undergraduates	1,006	1,035	1,081	1,136	1,226	21.9%	684	705	725	788	862	26.0%
Graduates	62	61	63	99	81	30.6%	46	49	67	81	68	47.8%
<b>Total</b>	<b>1,068</b>	<b>1,096</b>	<b>1,144</b>	<b>1,235</b>	<b>1,307</b>	<b>22.4%</b>	<b>730</b>	<b>754</b>	<b>792</b>	<b>869</b>	<b>930</b>	<b>27.4%</b>
Audit Only Students*	1	1	0	0	0	-100.0%						
Audit Credit Hours	3	3	3	0	0	-100.0%						

\*Audit only students and the hours they audit are not reportable.

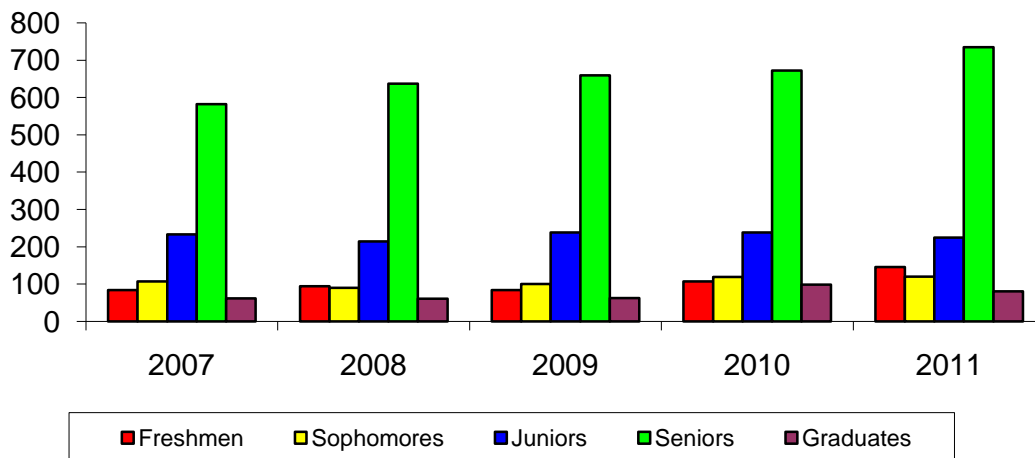
### Percentage of Total Headcount - Summer 2011



## College of Business Administration Summer Headcount Enrollment Trends

	<u>2007</u>	<u>2008</u>	<u>2009</u>	<u>2010</u>	<u>2011</u>	5 Year % Diff
Freshmen	84	94	84	107	146	36.4%
Sophomores	107	90	100	119	120	0.8%
Juniors	233	214	238	238	225	-5.5%
Seniors	582	637	659	672	735	9.4%
Undergraduates	1,006	1,035	1,081	1,136	1,226	7.9%
Graduates	62	61	63	99	81	-18.2%
<b>Total</b>	<b>1,068</b>	<b>1,096</b>	<b>1,144</b>	<b>1,235</b>	<b>1,307</b>	<b>5.8%</b>
First Time Freshmen	13	11	5	6	24	300.0%
First Time UG Transfers	43	44	24	44	49	11.4%

### Summer Enrollment Trends



**College of Business Administration**  
**Summer 2011 Enrollment**  
**Students by Time of Day\***

	<u>Morning</u>	<u>Afternoon</u>	<u>Evening</u>	<u>Weekend</u>
<u>Headcount</u>				
Freshmen	18	15	44	0
Sophomores	40	35	42	0
Juniors	69	69	85	0
Seniors	207	188	358	0
Post-Baccalaureates	2	3	19	0
Undergraduates	336	310	548	0
Graduates	0	2	82	0
<b>Grand Total</b>	<b>336</b>	<b>312</b>	<b>630</b>	<b>0</b>

<u>Credit Hours</u>				
Freshmen	66	45	147	0
Sophomores	138	108	138	0
Juniors	270	216	287	0
Seniors	756	599	1,178	0
Post-Baccalaureates	6	9	64	0
Undergraduates	1,236	977	1,814	0
Graduates	0	9	399	0
<b>Grand Total</b>	<b>1,236</b>	<b>986</b>	<b>2,213</b>	<b>0</b>

Full-Time Students	273	250	409	0
Part-Time Students	63	62	221	0
Average Age	25	25	28	---

\*Based on CRN College and Student Classification.

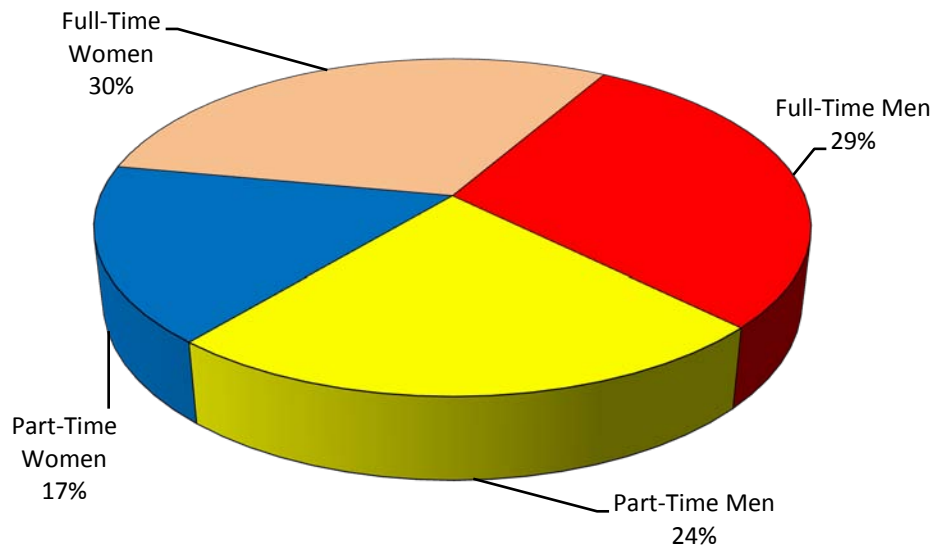


**College of Business Administration  
Summer 2011 Enrollment  
By Classification and Full-Time/Part-Time Status**

	Full-Time		Part-Time		Total	
	Men	Women	Men	Women	Men	Women
Freshmen	44	24	46	32	90	56
Sophomores	35	32	35	18	70	50
Juniors	65	72	50	38	115	110
Seniors	195	232	176	132	371	364
Undergraduates	339	360	307	220	646	580
Graduates	41	37	2	1	43	38
Total	380	397	309	221	689	618
<b>Grand Total</b>	<b>777</b>		<b>530</b>		<b>1,307</b>	

Percentage of Total Headcount	59.4%	40.6%	100.0%
-------------------------------	-------	-------	--------

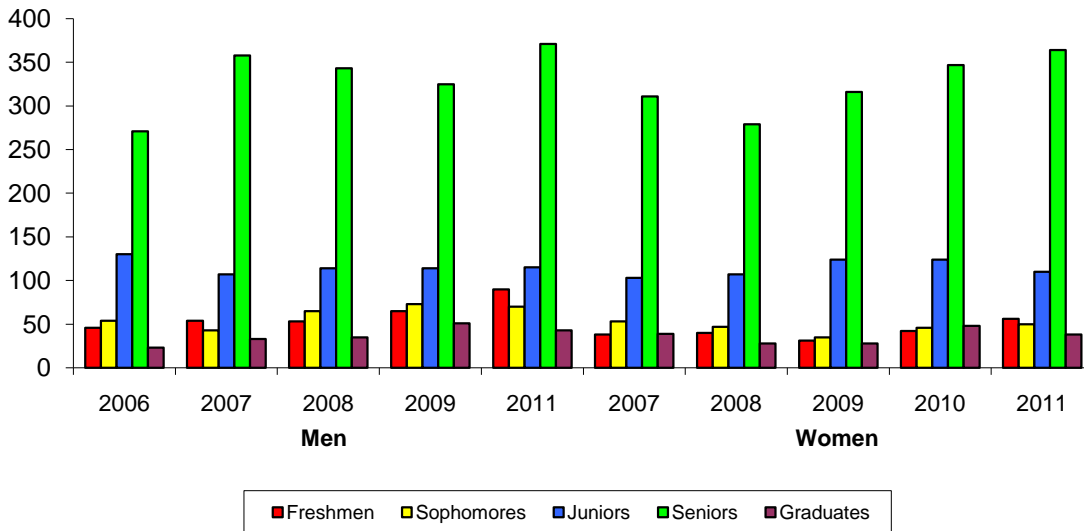
**Gender and Full/Part-Time Status**



## College of Business Administration Summer Enrollment By Classification and Gender

	Men					5 Year % Diff	Women					5 Year % Diff
	2006	2007	2008	2009	2011		2007	2008	2009	2010	2011	
Freshmen	46	54	53	65	90	95.7%	38	40	31	42	56	47.4%
Sophomores	54	43	65	73	70	29.6%	53	47	35	46	50	-5.7%
Juniors	130	107	114	114	115	-11.5%	103	107	124	124	110	6.8%
Seniors	271	358	343	325	371	36.9%	311	279	316	347	364	17.0%
Graduates	23	33	35	51	43	87.0%	39	28	28	48	38	-2.6%
<b>Total</b>	<b>524</b>	<b>595</b>	<b>610</b>	<b>628</b>	<b>689</b>	<b>31.5%</b>	<b>544</b>	<b>501</b>	<b>534</b>	<b>607</b>	<b>618</b>	<b>13.6%</b>
% of Yearly Total	49%	54%	53%	51%	53%	7.4%	51%	46%	47%	49%	47%	-7.2%

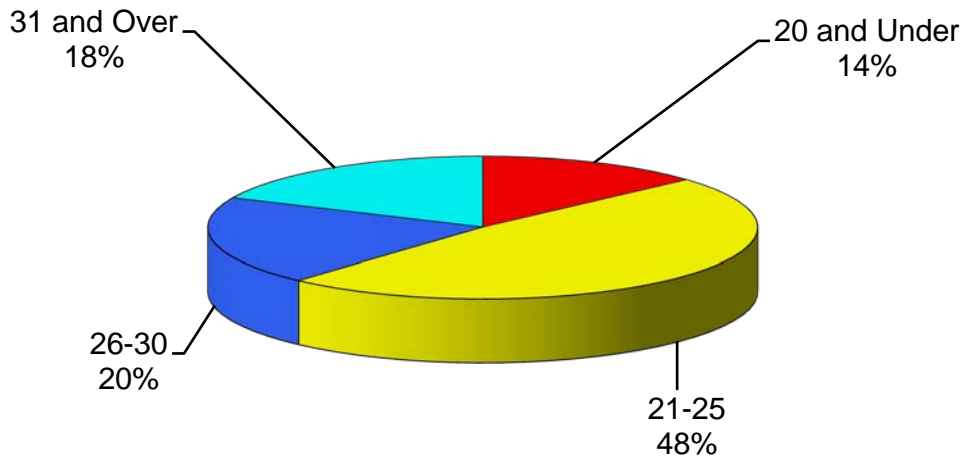
### Men/Women Comparison



**College of Business Administration  
Summer Enrollment  
Age Distribution Analysis**

	<u>2007</u>	<u>2008</u>	<u>2009</u>	<u>2010</u>	<u>2011</u>	<u>5 Year Diff</u>
20 and Under	14.5%	13.9%	14.1%	12.0%	13.3%	-1.2%
21-25	54.3%	53.6%	52.5%	52.6%	48.3%	-6.0%
26-30	17.3%	17.8%	17.7%	18.7%	20.1%	2.8%
31 and Over	13.9%	14.7%	15.7%	16.7%	18.2%	4.3%
Average Age	26	25	26	26	26	0

**Age Distribution - Summer 2011**



**College of Business Administration  
 Summer 2011 Enrollment  
 Ethnicity/Race Comparison**

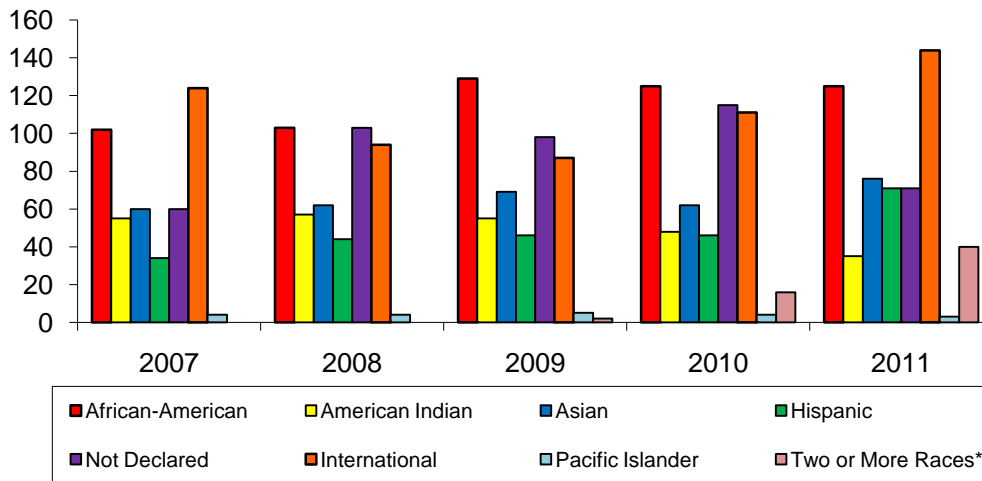
	<u>Men</u>	<u>Women</u>	<u>Total</u>	<u>% of Total</u>
Caucasian	411	331	742	56.8%
African-American	49	76	125	9.6%
American Indian	20	15	35	2.7%
Asian	33	43	76	5.8%
Hispanic	28	43	71	5.4%
International	85	59	144	11.0%
Pacific Islander	1	2	3	0.2%
Two or More Races	20	20	40	3.1%
Not Declared	42	29	71	5.4%
<b>Total</b>	<b>689</b>	<b>618</b>	<b>1,307</b>	<b>100.0%</b>

## College of Business Administration Summer Enrollment Ethnicity/Race Comparison

	<u>2007</u>	<u>2008</u>	<u>2009</u>	<u>2010</u>	<u>2011</u>	<u>5 Year % Diff</u>
Caucasian	629	629	653	708	742	18.0%
African-American	102	103	129	125	125	22.5%
American Indian	55	57	55	48	35	-36.4%
Asian	60	62	69	62	76	26.7%
Hispanic	34	44	46	46	71	108.8%
International	124	94	87	111	144	16.1%
Pacific Islander	4	4	5	4	3	-25.0%
Two or More Races*	---	---	2	16	40	---
Not Declared	60	103	98	115	71	18.3%
<b>Total</b>	<b>1,068</b>	<b>1,096</b>	<b>1,144</b>	<b>1,235</b>	<b>1,307</b>	<b>22.4%</b>

\* Category added to meet federal methodology.

### Ethnicity/Race Comparison



**College of Business Administration**  
**Summer 2011 Enrollment**  
**Part of Term and Course Type\***

<u>Number of Sections</u>	<u>Block 1</u>	<u>Block 2</u>	<u>Full Term</u>	<u>Intersession</u>	<u>Irregular</u>
Undergraduate	24	9	54	8	1
Graduate	0	0	4	0	0
<b>Total</b>	<b>24</b>	<b>9</b>	<b>58</b>	<b>8</b>	<b>1</b>

Undergraduate Enrollment

B-Lab	370	277	635	0	0
HYB-Hybrid	0	0	0	0	0
IVE-Interactive Video	0	0	0	0	0
L-Lecture	0	0	0	0	0
WWW-World Wide Web	73	0	314	35	0
XAM-Applied Music	0	0	0	0	1
XDR-Directed Reading	0	0	0	0	0
XI-Institute	0	0	0	0	0
XIN-Internship	0	0	61	0	0
XIS-Independent Study	2	0	8	0	0
XP-Practicum	20	0	0	0	0
XS-Seminar	0	0	30	69	0
XST-Study Tour	0	0	0	23	0
XSU-Studio Art	0	0	0	0	0
XTA-Advanced Topics	0	0	0	0	0
XTO-Topics	0	0	0	0	0
XW-Workshop	0	0	0	0	0
No Type Specified	0	0	0	0	0
<b>Total</b>	<b>465</b>	<b>277</b>	<b>1,048</b>	<b>127</b>	<b>1</b>

Graduate Enrollment

B-Lab	0	0	0	0	0
IVE-Interactive Video	0	0	0	0	0
L-Lecture	0	0	75	0	0
WWW-World Wide Web	0	0	0	0	0
XAM-Applied Music	0	0	0	0	0
XDR-Directed Reading	0	0	0	0	0
XGP-Graduate Project	0	0	0	0	0
XI-Institute	0	0	0	0	0
XIN-Internship	0	0	0	0	0
XIS-Independent Study	0	0	0	0	0
XP-Practicum	0	0	0	0	0
XS-Seminar	0	0	2	0	0
XSP-Graduate Special Topics	0	0	0	0	0
XST-Study Tour	0	0	0	0	0
XSU-Studio Art	0	0	0	0	0
XT-Thesis	0	0	0	0	0
XTA-Advanced Topics	0	0	0	0	0
XTO-Topics	0	0	0	0	0
XW-Workshop	0	0	0	0	0
No Type	0	0	0	0	0
<b>Total</b>	<b>0</b>	<b>0</b>	<b>77</b>	<b>0</b>	<b>0</b>

# **College of Education and Professional Studies**

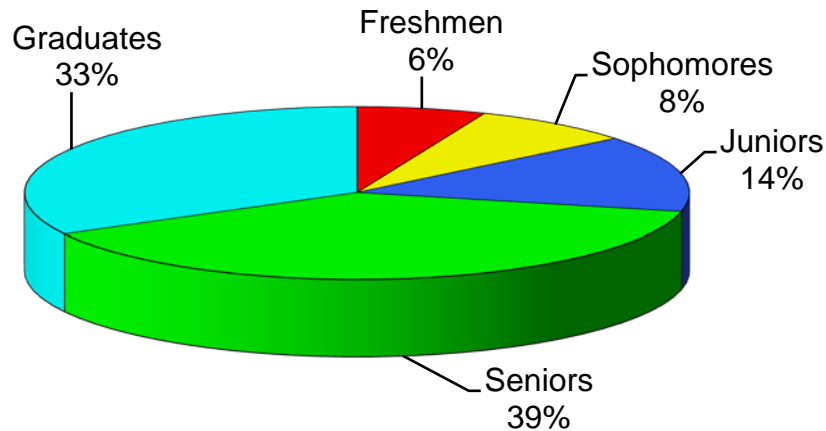
**Summer 2011**

## College of Education and Professional Studies Summer Enrollment

	Headcount					5 Year % Diff	FTE					5 Year % Diff
	2007	2008	2009	2010	2011		2007	2008	2009	2010	2011	
Freshmen	79	89	110	125	134	69.6%	46	56	70	79	92	100.0%
Sophomores	114	145	127	143	168	47.4%	72	93	87	97	125	73.6%
Juniors	259	326	269	317	307	18.5%	185	233	194	234	232	25.4%
Seniors	631	696	739	776	822	30.3%	456	514	558	589	631	38.4%
Undergraduates	1,083	1,256	1,245	1,361	1,431	32.1%	759	896	909	999	1,080	42.3%
Graduates	544	598	658	701	703	29.2%	441	473	503	561	606	37.4%
<b>Total</b>	<b>1,627</b>	<b>1,854</b>	<b>1,903</b>	<b>2,062</b>	<b>2,134</b>	<b>31.2%</b>	<b>1,200</b>	<b>1,369</b>	<b>1,412</b>	<b>1,560</b>	<b>1,686</b>	<b>40.5%</b>
Audit Only Students*	0	1	0	0	0	---						
Audit Credit Hours	0	2	0	0	0	---						

\*Audit only students and the hours they audit are not reportable.

### Percentage of Total Headcount - Summer 2011

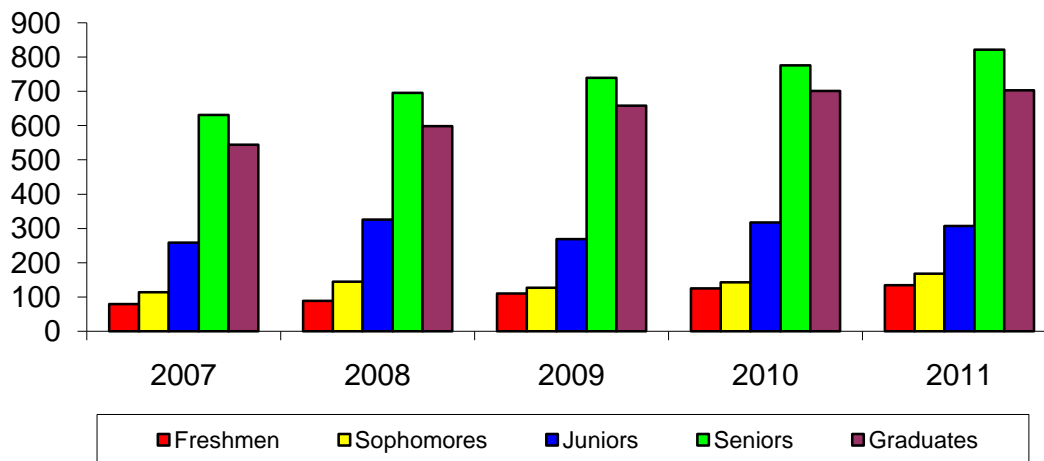




## College of Education and Professional Studies Summer Headcount Enrollment Trends

	<u>2007</u>	<u>2008</u>	<u>2009</u>	<u>2010</u>	<u>2011</u>	5 Year % Diff
Freshmen	79	89	110	125	134	7.2%
Sophomores	114	145	127	143	168	17.5%
Juniors	259	326	269	317	307	-3.2%
Seniors	631	696	739	776	822	5.9%
Undergraduates	1,083	1,256	1,245	1,361	1,431	5.1%
Graduates	544	598	658	701	703	0.3%
<b>Total</b>	<b>1,627</b>	<b>1,854</b>	<b>1,903</b>	<b>2,062</b>	<b>2,134</b>	<b>3.5%</b>
First Time Freshmen	9	8	5	10	5	-50.0%
First Time UG Transfers	39	51	34	52	57	9.6%

### Summer Enrollment Trends



**College of Education and Professional Studies**  
**Summer 2011 Enrollment**  
**Students by Time of Day\***

	<u>Morning</u>	<u>Afternoon</u>	<u>Evening</u>	<u>Weekend</u>
<u>Headcount</u>				
Freshmen	77	18	21	0
Sophomores	76	18	24	5
Juniors	159	47	55	29
Seniors	357	128	132	120
Post-Baccalaureates	6	1	2	1
Undergraduates	675	212	234	155
Graduates	378	227	131	62
<b>Grand Total</b>	<b>1,053</b>	<b>439</b>	<b>365</b>	<b>217</b>

<u>Credit Hours</u>				
Freshmen	183	48	59	0
Sophomores	226	46	55	12
Juniors	525	129	147	54
Seniors	1,223	393	334	256
Post-Baccalaureates	18	3	4	1
Undergraduates	2,175	619	599	323
Graduates	1,606	703	346	146
<b>Grand Total</b>	<b>3,781</b>	<b>1,322</b>	<b>945</b>	<b>469</b>

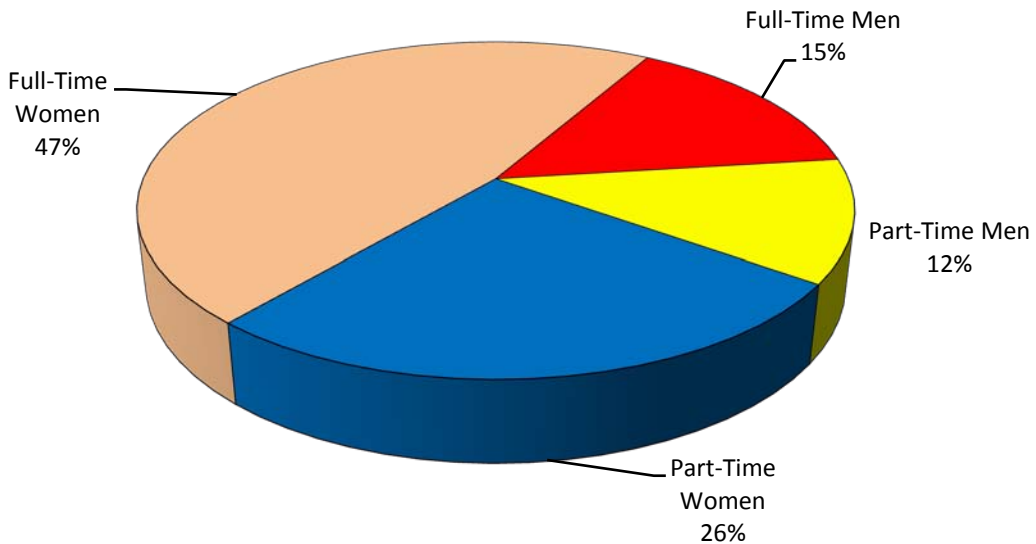
Full-Time Students	778	334	246	136
Part-Time Students	275	105	119	81
Average Age	28	30	30	31

\*Based on CRN College and Student Classification.

**College of Education and Professional Studies**  
**Summer 2011 Enrollment**  
**By Classification and Full-Time/Part-Time Status**

	Full-Time		Part-Time		Total	
	Men	Women	Men	Women	Men	Women
Freshmen	22	55	19	38	41	93
Sophomores	27	77	22	42	49	119
Juniors	53	135	38	81	91	216
Seniors	144	338	124	216	268	554
Undergraduates	246	605	203	377	449	982
Graduates	68	399	48	188	116	587
Total	314	1,004	251	565	565	1,569
<b>Grand Total</b>	<b>1,318</b>		<b>816</b>		<b>2,134</b>	
Percentage of Total Headcount	61.8%		38.2%		100.0%	

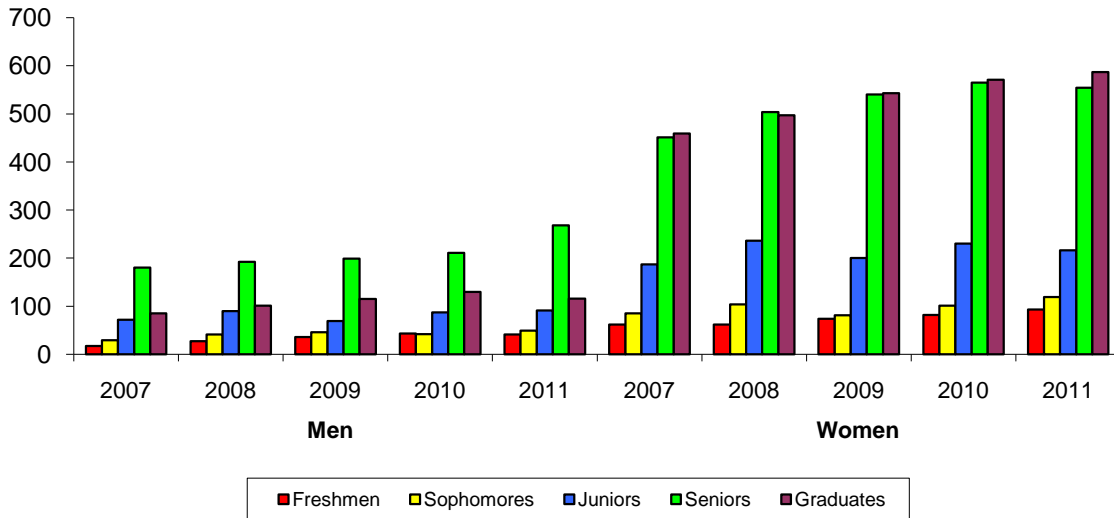
**Gender and Full/Part-Time Status**



**College of Education and Professional Studies  
Summer Enrollment  
By Classification and Gender**

	Men					5 Year % Diff	Women					5 Year % Diff
	2007	2008	2009	2010	2011		2007	2008	2009	2010	2011	
Freshmen	17	27	36	43	41	141.2%	62	62	74	82	93	50.0%
Sophomores	29	41	46	42	49	69.0%	85	104	81	101	119	40.0%
Juniors	72	90	69	87	91	26.4%	187	236	200	230	216	15.5%
Seniors	180	192	199	211	268	48.9%	451	504	540	565	554	22.8%
Graduates	85	101	115	130	116	36.5%	459	497	543	571	587	27.9%
<b>Total</b>	<b>383</b>	<b>451</b>	<b>465</b>	<b>513</b>	<b>565</b>	<b>47.5%</b>	<b>1,244</b>	<b>1,403</b>	<b>1,438</b>	<b>1,549</b>	<b>1,569</b>	<b>26.1%</b>
% of Yearly Total	24%	24%	24%	25%	26%	12.5%	76%	76%	76%	75%	74%	-3.8%

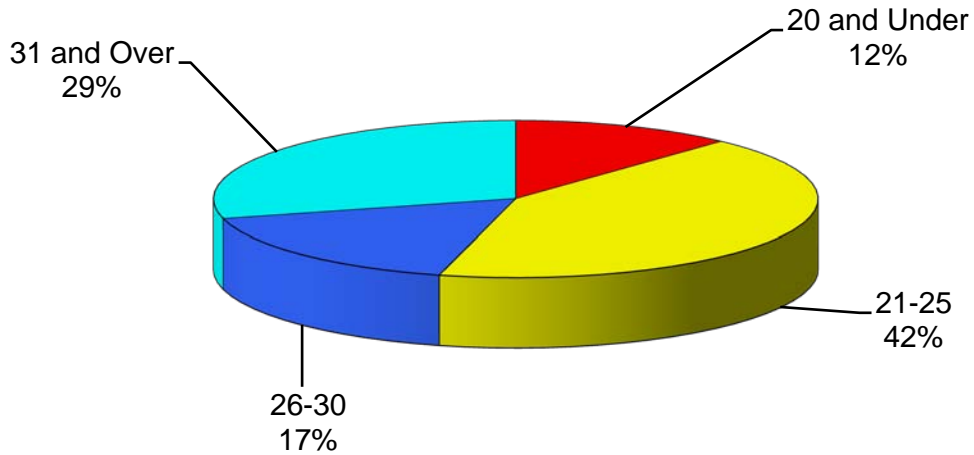
**Men/Women Comparison**



**College of Education and Professional Studies  
Summer Enrollment  
Age Distribution Analysis**

	<u>2007</u>	<u>2008</u>	<u>2009</u>	<u>2010</u>	<u>2011</u>	<u>5 Year Diff</u>
20 and Under	10.1%	10.8%	10.0%	11.2%	11.9%	1.8%
21-25	49.7%	46.3%	45.6%	41.8%	42.2%	-7.6%
26-30	13.7%	15.4%	15.8%	16.7%	16.8%	3.1%
31 and Over	26.5%	27.5%	28.6%	30.3%	29.1%	2.6%
Average Age	28	28	28	29	29	1

**Age Distribution - Summer 2011**



**College of Education and Professional Studies**  
**Summer 2011 Enrollment**  
**Ethnicity/Race Comparison**

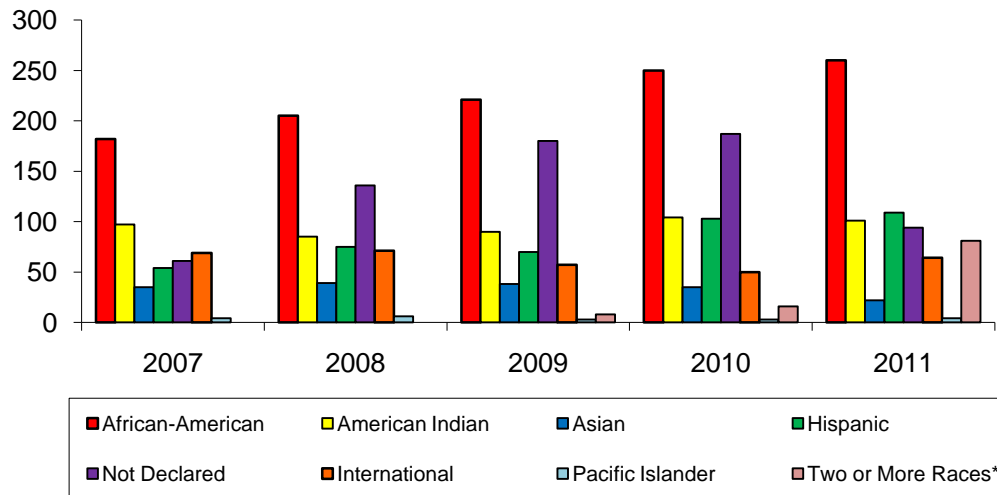
	<u>Men</u>	<u>Women</u>	<u>Total</u>	<u>% of Total</u>
Caucasian	378	1,021	1,399	65.6%
African-American	66	194	260	12.2%
American Indian	28	73	101	4.7%
Asian	7	15	22	1.0%
Hispanic	16	93	109	5.1%
International	23	41	64	3.0%
Pacific Islander	2	2	4	0.2%
Two or More Races	21	60	81	3.8%
Not Declared	24	70	94	4.4%
<b>Total</b>	<b>565</b>	<b>1,569</b>	<b>2,134</b>	<b>100.0%</b>

## College of Education and Professional Studies Summer Enrollment Ethnicity/Race Comparison

	<u>2007</u>	<u>2008</u>	<u>2009</u>	<u>2010</u>	<u>2011</u>	<u>5 Year % Diff</u>
Caucasian	1,125	1,237	1,236	1,314	1,399	24.4%
African-American	182	205	221	250	260	42.9%
American Indian	97	85	90	104	101	4.1%
Asian	35	39	38	35	22	-37.1%
Hispanic	54	75	70	103	109	101.9%
International	69	71	57	50	64	-7.2%
Pacific Islander	4	6	3	3	4	0.0%
Two or More Races*	---	---	8	16	81	---
Not Declared	61	136	180	187	94	54.1%
<b>Total</b>	<b>1,627</b>	<b>1,854</b>	<b>1,903</b>	<b>2,062</b>	<b>2,134</b>	<b>31.2%</b>

\* Category added to meet federal methodology.

### Ethnicity/Race Comparison



# College of Education and Professional Studies

## Summer 2011 Enrollment

### Part of Term and Course Type\*

<u>Number of Sections</u>	<u>Block 1</u>	<u>Block 2</u>	<u>Full Term</u>	<u>Intersession</u>	<u>Irregular</u>
Undergraduate	35	21	59	36	9
Graduate	42	26	47	17	8
<b>Total</b>	<b>77</b>	<b>47</b>	<b>106</b>	<b>53</b>	<b>17</b>

#### Undergraduate Enrollment

B-Lab	0	0	0	0	0
C-Lecture Lab	0	0	0	0	0
CL-Clinical Lab	0	0	0	0	0
HYB-Hybrid	15	17	26	33	0
IVE-Interactive Video	0	0	0	0	0
L-Lecture	510	322	311	175	136
LCR-Lab with Credit	0	0	0	0	0
R-Recitation/Lab	0	0	0	0	0
WWW-World Wide Web	36	50	394	72	0
XAM-Applied Music	0	0	0	0	0
XDR-Directed Reading	0	0	0	0	0
XFS-Field Study	0	0	0	0	0
XI-Institute	0	0	0	252	0
XIN-Internship	0	0	44	0	0
XIS-Independent Study	1	0	7	0	1
XP-Practicum	0	0	62	0	0
XS-Seminar	0	0	0	102	12
XST-Study Tour	0	0	0	23	1
XSU-Studio Art	0	0	0	0	0
XTA-Advanced Topics	0	0	0	0	0
XTO-Topics	23	19	0	15	0
XW-Workshop	0	0	0	0	0
No Type Specified	0	0	0	0	0
<b>Total</b>	<b>585</b>	<b>408</b>	<b>844</b>	<b>672</b>	<b>150</b>

#### Graduate Enrollment

B-Lab	0	0	0	0	0
HYB-Hybrid	17	20	34	0	0
IVE-Interactive Video	0	0	0	0	0
L-Lecture	358	259	158	16	66
LCR-Lab with Credit	0	0	0	0	0
WWW-World Wide Web	60	16	35	0	0
XAM-Applied Music	0	0	0	0	0
XDR-Directed Reading	0	0	0	0	0
XFS Field Study	0	0	0	0	0
XGP-Graduate Project	0	0	0	0	0
XI-Institute	0	0	0	41	0
XIN-Internship	0	14	2	0	0
XIS-Independent Study	4	0	10	0	0
XP-Practicum	0	0	54	0	0
XS-Seminar	4	18	10	32	25
XSP-Graduate Special Topics	0	0	0	0	0
XST-Study Tour	0	0	0	0	8
XSU-Studio Art	0	0	0	0	0
XT-Thesis	1	0	4	0	0
XW-Workshop	1	0	1	0	2
No Type Specified	0	0	0	0	0
<b>Total</b>	<b>445</b>	<b>327</b>	<b>308</b>	<b>89</b>	<b>101</b>



# **College of Fine Arts and Design**

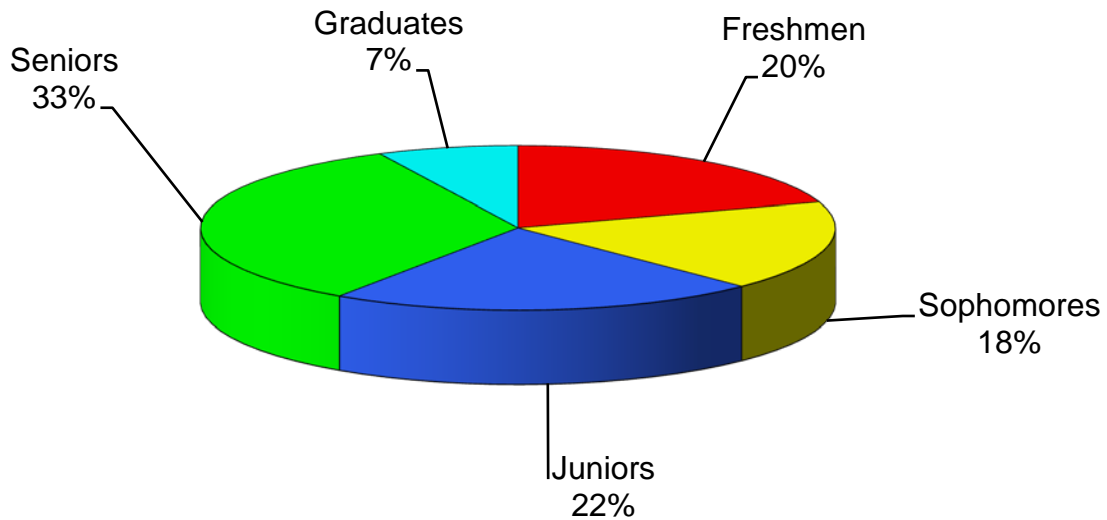
**Summer 2011**

## College of Fine Arts and Design Summer Enrollment

	Headcount					5 Year % Diff	FTE					5 Year % Diff
	2007	2008	2009	2010	2010		2007	2008	2009	2010	2011	
Freshmen	27	30	35	45	61	125.9%	14	16	22	27	36	157.1%
Sophomores	46	35	34	52	54	17.4%	23	20	18	29	35	52.2%
Juniors	46	58	46	52	67	45.7%	26	35	25	30	45	73.1%
Seniors	128	112	110	109	102	-20.3%	80	73	70	62	62	-22.5%
Undergraduates	247	235	225	258	284	15.0%	143	144	134	148	178	24.5%
Graduates	14	18	24	19	22	57.1%	14	15	32	21	21	50.0%
<b>Total</b>	<b>261</b>	<b>253</b>	<b>249</b>	<b>277</b>	<b>306</b>	<b>17.2%</b>	<b>157</b>	<b>159</b>	<b>166</b>	<b>169</b>	<b>199</b>	<b>26.8%</b>
Audit Only Students*	0	0	0	0	0	---						
Audit Credit Hours	0	0	0	0	0	---						

\*Audit only students and the hours they audit are not reportable.

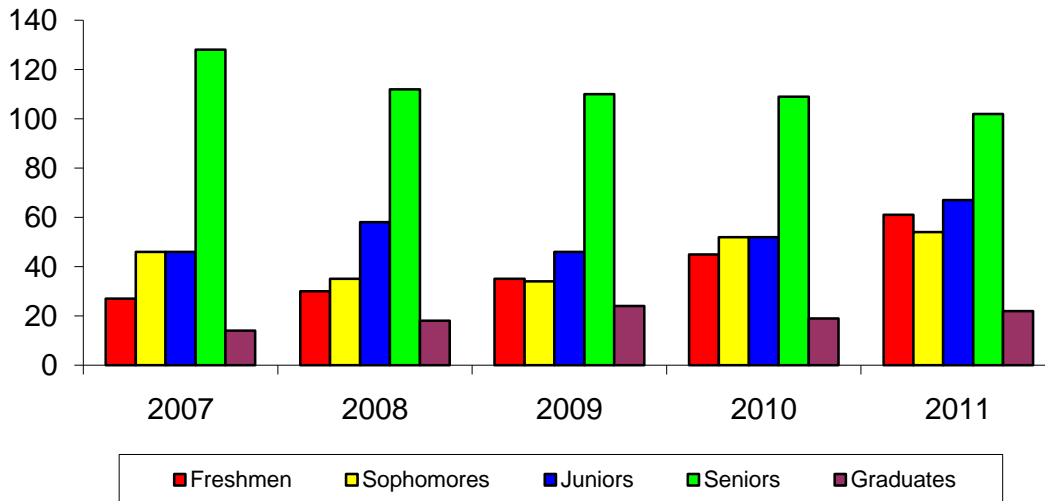
### Percentage of Total Headcount - Summer 2011



## College of Fine Arts and Design Summer Headcount Enrollment Trends

	<u>2007</u>	<u>2008</u>	<u>2009</u>	<u>2010</u>	<u>2011</u>	5 Year % Diff
Freshmen	27	30	35	45	61	125.9%
Sophomores	46	35	34	52	54	17.4%
Juniors	46	58	46	52	67	45.7%
Seniors	128	112	110	109	102	-20.3%
Undergraduates	247	235	225	258	284	15.0%
Graduates	14	18	24	19	22	57.1%
<b>Total</b>	<b>261</b>	<b>253</b>	<b>249</b>	<b>277</b>	<b>306</b>	<b>17.2%</b>
First Time Freshmen	3	6	4	4	8	166.7%
First Time UG Transfers	7	11	6	11	5	-28.6%

### Summer Enrollment Trends



**College of Fine Arts and Design**  
**Summer 2011 Enrollment**  
**Students by Time of Day\***

	<u>Morning</u>	<u>Afternoon</u>	<u>Evening</u>	<u>Weekend</u>
<u>Headcount</u>				
Freshmen	17	6	0	0
Sophomores	11	8	0	0
Juniors	25	17	1	1
Seniors	28	13	0	5
Post-Baccalaureates	0	0	0	0
Undergraduates	81	44	1	6
Graduates	8	4	0	4
<b>Grand Total</b>	<b>89</b>	<b>48</b>	<b>1</b>	<b>10</b>

<u>Credit Hours</u>				
Freshmen	44	17	0	0
Sophomores	27	20	0	0
Juniors	57	45	3	3
Seniors	62	35	0	15
Post-Baccalaureates	0	0	0	0
Undergraduates	190	117	3	18
Graduates	23	12	0	12
<b>Grand Total</b>	<b>213</b>	<b>129</b>	<b>3</b>	<b>30</b>

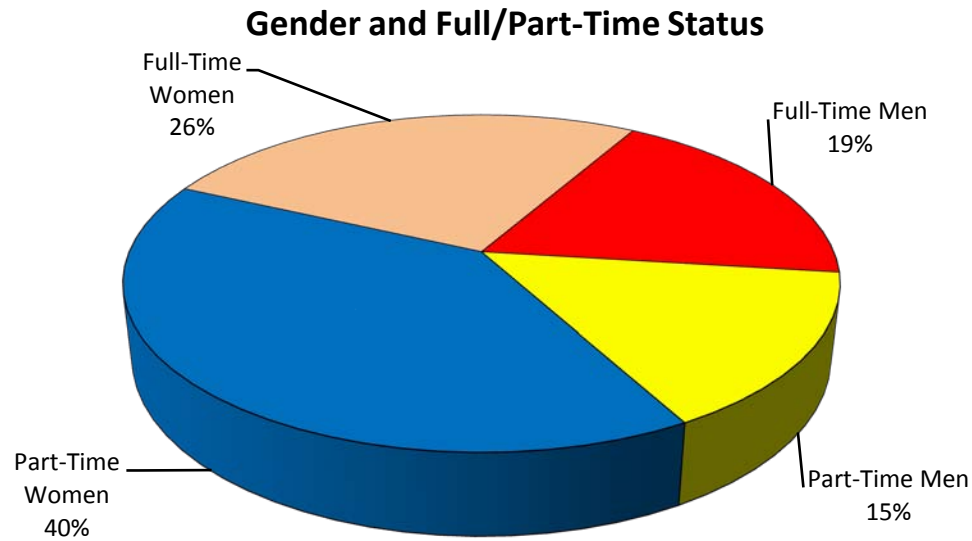
Full-Time Students	50	22	2	3
Part-Time Students	39	26	1	7
Average Age	24	23	21	31

\*Based on CRN College and Student Classification.

**College of Fine Arts and Design**  
**Summer 2011 Enrollment**  
**By Classification and Full-Time/Part-Time Status**

	Full-Time		Part-Time		Total	
	Men	Women	Men	Women	Men	Women
Freshmen	13	11	6	31	19	42
Sophomores	12	16	6	20	18	36
Juniors	14	19	16	18	30	37
Seniors	14	28	16	44	30	72
Undergraduates	53	74	44	113	97	187
Graduates	4	7	2	9	6	16
Total	57	81	46	122	103	203
<b>Grand Total</b>	<b>138</b>		<b>168</b>		<b>306</b>	

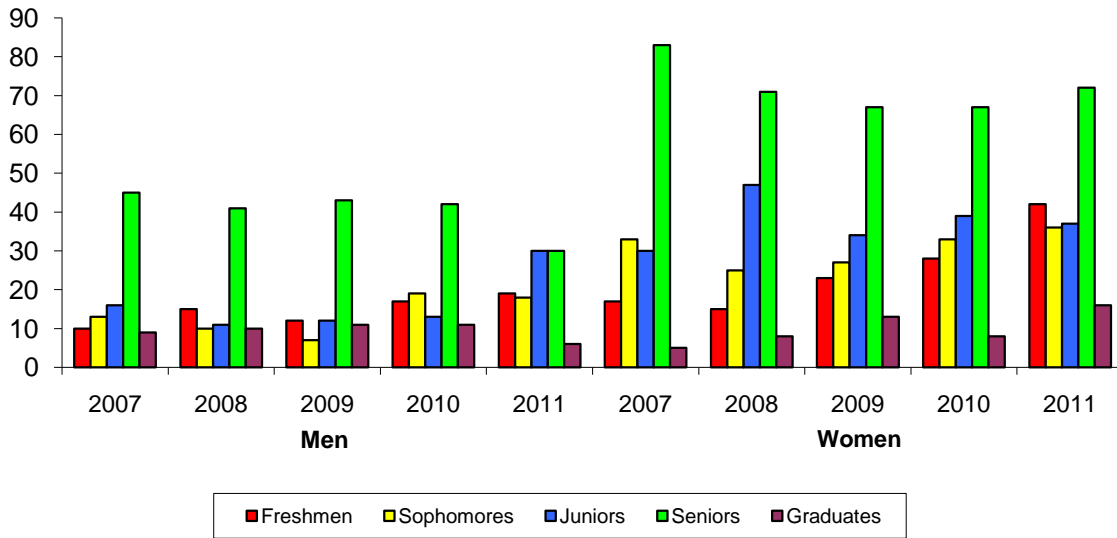
Percentage of Total Headcount	45.1%	54.9%	100.0%
-------------------------------	-------	-------	--------



## College of Fine Arts and Design Summer Enrollment By Classification and Gender

	Men					5 Year % Diff	Women					5 Year % Diff
	2007	2008	2009	2010	2011		2007	2008	2009	2010	2011	
Freshmen	10	15	12	17	19	90.0%	17	15	23	28	42	147.1%
Sophomores	13	10	7	19	18	38.5%	33	25	27	33	36	9.1%
Juniors	16	11	12	13	30	87.5%	30	47	34	39	37	23.3%
Seniors	45	41	43	42	30	-33.3%	83	71	67	67	72	-13.3%
Graduates	9	10	11	11	6	-33.3%	5	8	13	8	16	220.0%
<b>Total</b>	<b>93</b>	<b>87</b>	<b>85</b>	<b>102</b>	<b>103</b>	<b>10.8%</b>	<b>168</b>	<b>166</b>	<b>164</b>	<b>175</b>	<b>203</b>	<b>20.8%</b>
% of Yearly Total	36%	34%	34%	37%	34%	-5.5%	64%	66%	66%	63%	66%	3.1%

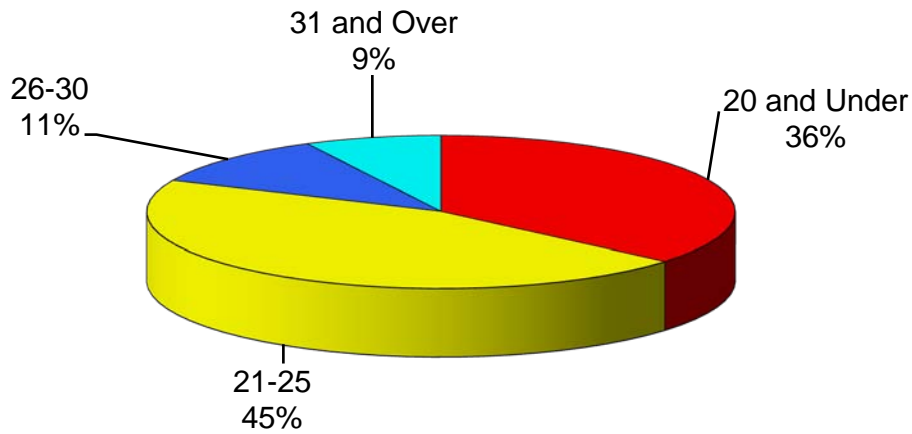
### Men/Women Comparison



**College of Fine Arts and Design  
Summer Enrollment  
Age Distribution Analysis**

	<u>2007</u>	<u>2008</u>	<u>2009</u>	<u>2010</u>	<u>2011</u>	<u>5 Year Diff</u>
20 and Under	28.4%	22.9%	27.3%	31.0%	36.3%	7.9%
21-25	48.3%	53.0%	47.0%	43.0%	45.4%	-2.9%
26-30	13.0%	12.3%	14.5%	17.0%	10.8%	-2.2%
31 and Over	10.3%	11.9%	11.2%	9.0%	7.5%	-2.8%
Average Age	24	24	24	24	23	-1

**Age Distribution - Summer 2011**



**College of Fine Arts and Design  
 Summer 2011 Enrollment  
 Ethnicity/Race Comparison**

	<u>Men</u>	<u>Women</u>	<u>Total</u>	<u>% of Total</u>
Caucasian	62	120	182	59.5%
African-American	11	11	22	7.2%
American Indian	9	7	16	5.2%
Asian	2	10	12	3.9%
Hispanic	10	13	23	7.5%
International	4	16	20	6.5%
Pacific Islander	0	1	1	0.3%
Two or More Races	3	14	17	5.6%
Not Declared	2	11	13	4.2%
<b>Total</b>	<b>103</b>	<b>203</b>	<b>306</b>	<b>100.0%</b>

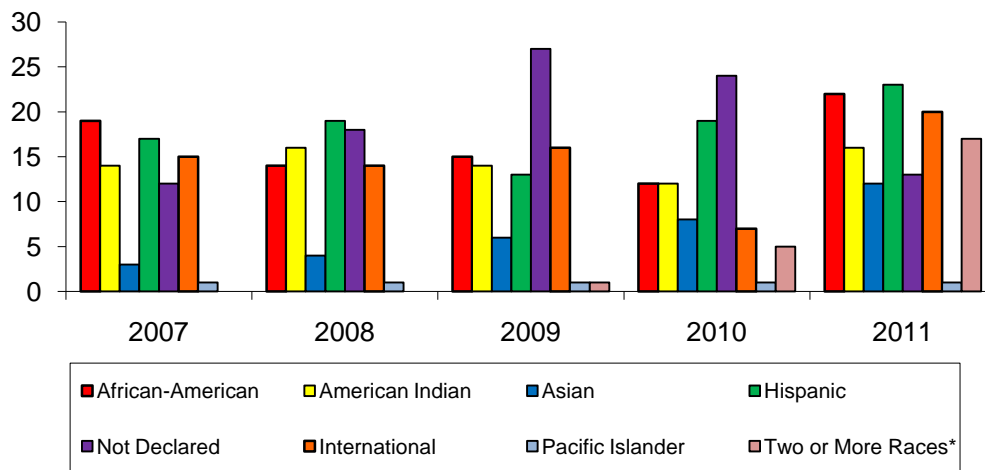


## College of Fine Arts and Design Summer Enrollment Ethnicity/Race Comparison

	<u>2007</u>	<u>2008</u>	<u>2009</u>	<u>2010</u>	<u>2011</u>	<u>5 Year % Diff</u>
Caucasian	180	167	156	189	182	1.1%
African-American	19	14	15	12	22	15.8%
American Indian	14	16	14	12	16	14.3%
Asian	3	4	6	8	12	300.0%
Hispanic	17	19	13	19	23	35.3%
International	15	14	16	7	20	33.3%
Pacific Islander	1	1	1	1	1	0.0%
Two or More Races*	---	---	1	5	17	---
Not Declared	12	18	27	24	13	8.3%
<b>Total</b>	<b>261</b>	<b>253</b>	<b>249</b>	<b>277</b>	<b>306</b>	<b>17.2%</b>

\* Category added to meet federal methodology.

### Ethnicity/Race Comparison



**College of Fine Arts and Design**  
**Summer 2011 Enrollment**  
**Part of Term and Course Type\***

	<u>Block 1</u>	<u>Block 2</u>	<u>Full Term</u>	<u>Intersession</u>	<u>Irregular</u>
<u>Number of Sections</u>					
Undergraduate	8	6	9	7	30
Graduate	0	1	3	4	8
<b>Total</b>	<b>8</b>	<b>7</b>	<b>12</b>	<b>11</b>	<b>38</b>

Undergraduate Enrollment

B-Lab	0	0	0	0	0
C-Lecture Lab	0	5	0	0	0
CL-Clinical Lab	0	0	0	0	0
IVE-Interactive Video	0	0	0	0	0
L-Lecture	59	0	37	0	0
LCR-Lab with Credit	0	0	0	0	0
R-Recitation/Lab	0	6	0	0	0
WWW-World Wide Web	49	25	64	0	0
XAM-Applied Music	0	0	0	0	0
XDR-Directed Reading	0	0	0	0	0
XFS-Field Study	0	0	0	0	0
XI-Institute	0	0	0	0	19
XIN-Internship	0	0	0	0	0
XIS-Independent Study	0	0	0	0	0
XP-Practicum	0	0	0	0	0
XS-Seminar	13	0	9	0	25
XST-Study Tour	0	0	0	0	0
XSU-Studio Art	0	21	13	0	0
XTA-Advanced Topics	0	1	0	0	0
XTO-Topics	0	0	0	0	0
XW-Workshop	0	0	0	0	0
No Type Specified	0	0	0	0	0
<b>Total</b>	<b>121</b>	<b>58</b>	<b>123</b>	<b>0</b>	<b>44</b>

Graduate Enrollment

B-Lab	0	0	0	0	0
C-Lecture Lab	0	7	0	0	5
IVE-Interactive Video	0	0	0	0	0
L-Lecture	0	0	0	0	0
LCR-Lab with Credit	0	0	0	0	0
WWW-World Wide Web	0	0	0	0	0
XAM-Applied Music	0	0	0	0	0
XDR-Directed Reading	0	0	0	0	0
XFS Field Study	0	0	0	0	0
XGP-Graduate Project	0	0	0	0	0
XI-Institute	0	0	0	0	0
XIN-Internship	0	0	1	0	0
XIS-Independent Study	0	0	0	0	0
XP-Practicum	0	0	0	0	0
XS-Seminar	0	0	4	0	21
XSP-Graduate Special Topics	0	0	0	0	0
XST-Study Tour	0	0	0	0	0
XSU-Studio Art	0	0	0	0	0
XT-Thesis	0	0	2	0	0
XW-Workshop	0	0	0	0	0
No Type Specified	0	0	0	0	0
<b>Total</b>	<b>0</b>	<b>7</b>	<b>7</b>	<b>0</b>	<b>26</b>

# **College of Liberal Arts**

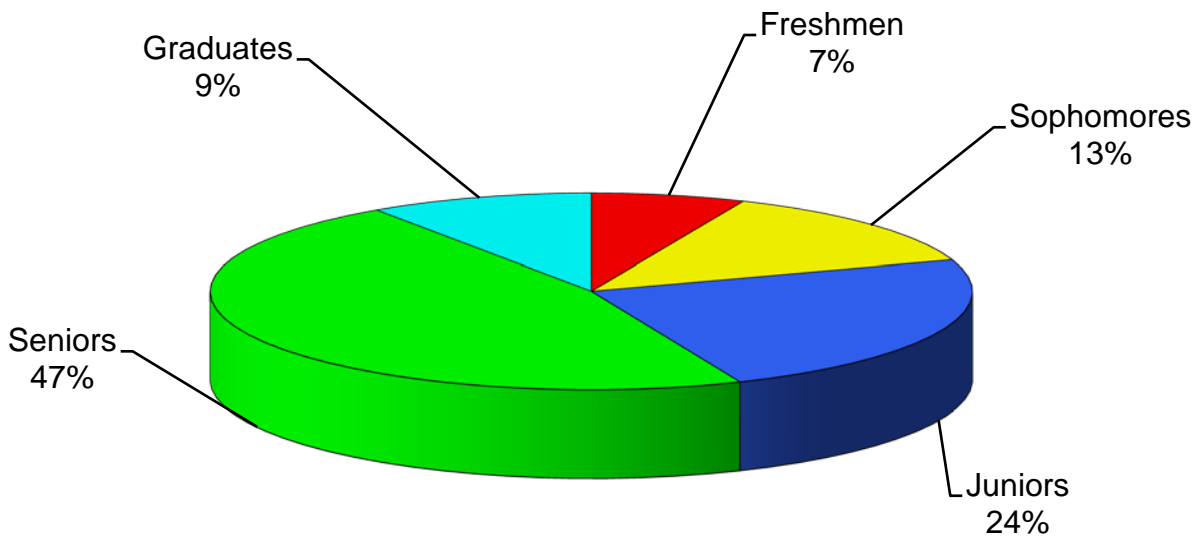
**Summer 2011**

## College of Liberal Arts Summer Enrollment

	Headcount					5 Year % Diff	FTE					5 Year % Diff
	2007	2008	2009	2010	2011		2007	2008	2009	2010	2011	
Freshmen	69	84	57	92	72	4.3%	41	52	37	60	49	19.5%
Sophomores	95	93	97	127	146	53.7%	62	63	65	88	107	72.6%
Juniors	208	192	214	250	262	26.0%	146	132	159	191	205	40.4%
Seniors	407	429	441	438	515	26.5%	281	308	322	325	401	42.7%
Undergraduates	779	798	809	907	995	27.7%	530	555	582	664	762	43.8%
Graduates	61	68	75	107	105	72.1%	45	46	50	73	80	77.8%
<b>Total</b>	<b>840</b>	<b>866</b>	<b>884</b>	<b>1,014</b>	<b>1,100</b>	<b>31.0%</b>	<b>575</b>	<b>601</b>	<b>632</b>	<b>737</b>	<b>842</b>	<b>46.4%</b>
Audit Only Students*	1	0	0	0	0	-100.0%						
Audit Credit Hours	2	0	0	0	0	-100.0%						

\*Audit only students and the hours they audit are not reportable.

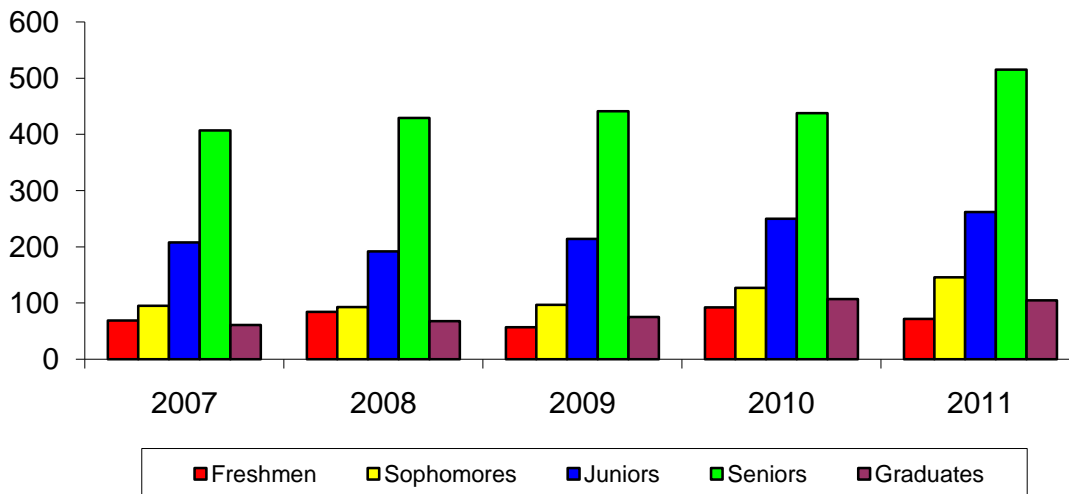
### Percentage of Total Headcount - Summer 2011



## College of Liberal Arts Summer Headcount Enrollment Trends

	<u>2007</u>	<u>2008</u>	<u>2009</u>	<u>2010</u>	<u>2011</u>	<u>5 Year % Diff</u>
Freshmen	69	84	57	92	72	-21.7%
Sophomores	95	93	97	127	146	15.0%
Juniors	208	192	214	250	262	4.8%
Seniors	407	429	441	438	515	17.6%
Undergraduates	779	798	809	907	995	9.7%
Graduates	61	68	75	107	105	-1.9%
<b>Total</b>	<b>840</b>	<b>866</b>	<b>884</b>	<b>1,014</b>	<b>1,100</b>	<b>8.5%</b>
First Time Freshmen	6	8	4	6	1	-83.3%
First Time UG Transfers	17	30	19	28	35	25.0%

### Summer Enrollment Trends



**College of Liberal Arts  
Summer 2011 Enrollment  
Students by Time of Day\***

	<u>Morning</u>	<u>Afternoon</u>	<u>Evening</u>	<u>Weekend</u>
<u>Headcount</u>				
Freshmen	243	123	36	0
Sophomores	196	83	63	0
Juniors	189	103	64	2
Seniors	303	153	155	4
Post-Baccalaureates	2	0	2	0
Undergraduates	933	462	320	6
Graduates	19	7	42	5
<b>Grand Total</b>	<b>952</b>	<b>469</b>	<b>362</b>	<b>11</b>

<u>Credit Hours</u>				
Freshmen	872	388	108	0
Sophomores	749	262	200	0
Juniors	663	343	211	6
Seniors	1,069	503	530	12
Post-Baccalaureates	6	0	6	0
Undergraduates	3,359	1,496	1,055	18
Graduates	76	21	167	15
<b>Grand Total</b>	<b>3,435</b>	<b>1,517</b>	<b>1,222</b>	<b>33</b>

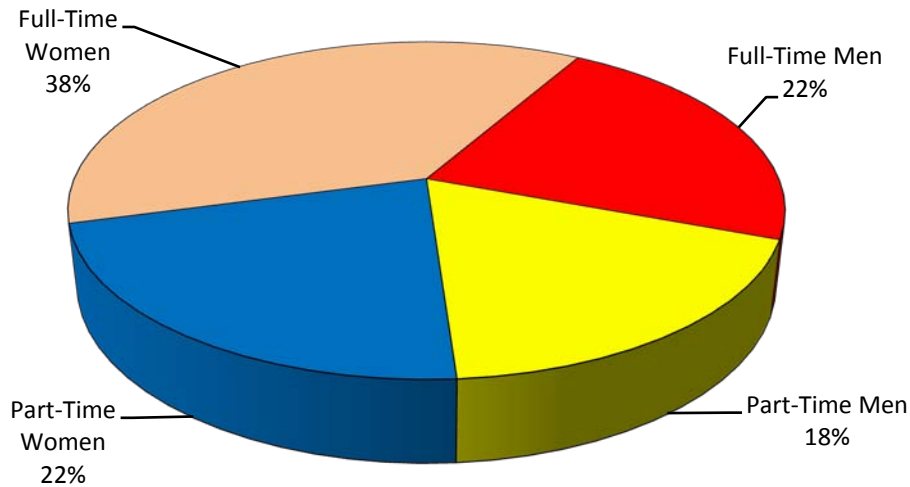
Full-Time Students	730	387	265	9
Part-Time Students	222	82	97	2
Average Age	24	25	26	33

\*Based on CRN College and Student Classification.

**College of Liberal Arts  
Summer 2011 Enrollment  
By Classification and Full-Time/Part-Time Status**

	Full-Time		Part-Time		Total	
	Men	Women	Men	Women	Men	Women
Freshmen	18	23	14	17	32	40
Sophomores	42	46	27	31	69	77
Juniors	51	110	46	55	97	165
Seniors	119	199	91	106	210	305
Undergraduates	230	378	178	209	408	587
Graduates	16	35	22	32	38	67
Total	246	413	200	241	446	654
<b>Grand Total</b>	<b>659</b>		<b>441</b>		<b>1,100</b>	
Percentage of Total Headcount	59.9%		40.1%		100.0%	

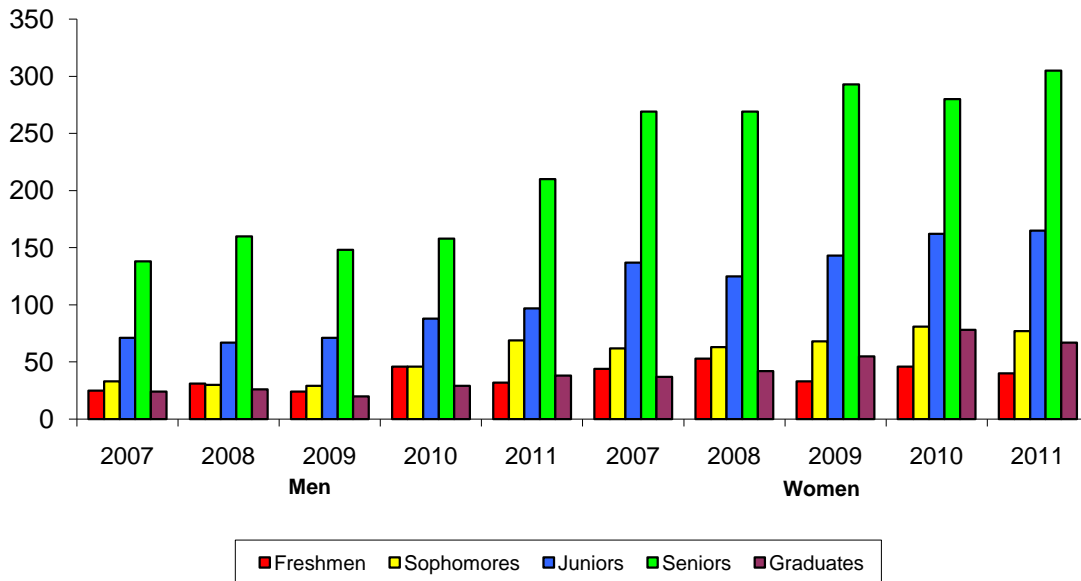
**Gender and Full/Part-Time Status**



## College of Liberal Arts Summer Enrollment By Classification and Gender

	Men					5 Year % Diff	Women					5 Year % Diff
	2007	2008	2009	2010	2011		2007	2008	2009	2010	2011	
Freshmen	25	31	24	46	32	28.0%	44	53	33	46	40	-9.1%
Sophomores	33	30	29	46	69	109.1%	62	63	68	81	77	24.2%
Juniors	71	67	71	88	97	36.6%	137	125	143	162	165	20.4%
Seniors	138	160	148	158	210	52.2%	269	269	293	280	305	13.4%
Graduates	24	26	20	29	38	58.3%	37	42	55	78	67	81.1%
<b>Total</b>	<b>291</b>	<b>314</b>	<b>292</b>	<b>367</b>	<b>446</b>	<b>53.3%</b>	<b>549</b>	<b>552</b>	<b>592</b>	<b>647</b>	<b>654</b>	<b>19.1%</b>
% of Yearly Total	35%	36%	33%	36%	41%	17.0%	65%	64%	67%	64%	59%	-9.0%

### Men/Women Comparison

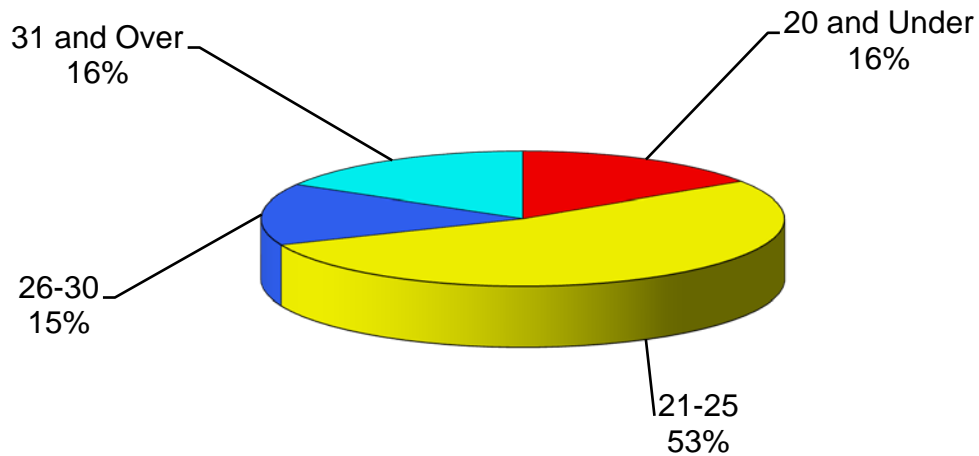




**College of Liberal Arts  
Summer Enrollment  
Age Distribution Analysis**

	<u>2007</u>	<u>2008</u>	<u>2009</u>	<u>2010</u>	<u>2011</u>	5 Year <u>Diff</u>
20 and Under	16.2%	16.3%	15.7%	19.4%	15.7%	-0.5%
21-25	56.2%	53.8%	55.9%	48.6%	52.9%	-3.3%
26-30	15.2%	14.1%	13.7%	15.0%	14.7%	-0.5%
31 and Over	12.4%	15.8%	14.7%	17.0%	16.6%	4.2%
Average Age	25	25	25	26	26	1

**Age Distribution - Summer 2011**



**College of Liberal Arts  
Summer 2011 Enrollment  
Ethnicity/Race Comparison**

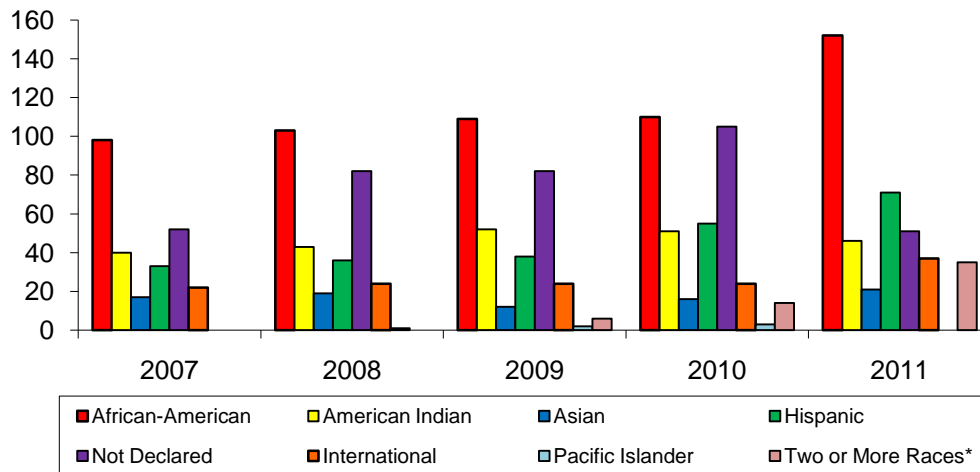
	<u>Men</u>	<u>Women</u>	<u>Total</u>	<u>% of Total</u>
Caucasian	292	395	687	62.5%
African-American	57	95	152	13.8%
American Indian	16	30	46	4.2%
Asian	7	14	21	1.9%
Hispanic	25	46	71	6.5%
International	17	20	37	3.4%
Pacific Islander	0	0	0	0.0%
Two or More Races	14	21	35	3.2%
Not Declared	18	33	51	4.6%
<b>Total</b>	<b>446</b>	<b>654</b>	<b>1,100</b>	<b>100.0%</b>

## College of Liberal Arts Summer Enrollment Ethnicity/Race Comparison

	<u>2007</u>	<u>2008</u>	<u>2009</u>	<u>2010</u>	<u>2011</u>	<u>5 Year % Diff</u>
Caucasian	578	558	559	636	687	18.9%
African-American	98	103	109	110	152	55.1%
American Indian	40	43	52	51	46	15.0%
Asian	17	19	12	16	21	23.5%
Hispanic	33	36	38	55	71	115.2%
International	22	24	24	24	37	68.2%
Pacific Islander	0	1	2	3	0	0.0%
Two or More Races*	---	---	6	14	35	---
Not Declared	52	82	82	105	51	-1.9%
<b>Total</b>	<b>840</b>	<b>866</b>	<b>884</b>	<b>1,014</b>	<b>1,100</b>	<b>31.0%</b>

\* Category added to meet federal methodology.

### Ethnicity/Race Comparison



**College of Liberal Arts  
Summer 2011 Enrollment  
Part of Term and Course Type\***

	<u>Block 1</u>	<u>Block 2</u>	<u>Full Term</u>	<u>Intersession</u>	<u>Irregular</u>
<u>Number of Sections</u>					
Undergraduate	44	41	60	15	5
Graduate	8	7	20	2	5
<b>Total</b>	<b>52</b>	<b>48</b>	<b>80</b>	<b>17</b>	<b>10</b>

Undergraduate Enrollment

B-Lab	0	0	0	0	0
HYB-Hybrid	0	0	93	0	21
IVE-Interactive Video	0	0	0	0	0
C-Lecture Lab	0	0	0	0	0
L-Lecture	591	571	362	53	0
LCR-Lab with Credit	0	0	6	0	0
WWW-World Wide Web	291	136	280	81	0
XAM-Applied Music	0	0	0	0	0
XDR-Directed Reading	0	0	0	0	0
XFS-Field Study	0	5	42	0	0
XI-Institute	0	0	0	0	0
XIN-Internship	0	0	31	0	0
XIS-Independent Study	0	0	1	0	0
XP-Practicum	0	0	0	4	0
XS-Seminar	49	45	0	49	6
XST-Study Tour	0	0	0	10	16
XSU-Studio Art	0	0	0	0	0
XTA-Advanced Topics	56	77	2	97	0
XTO-Topics	0	0	0	0	0
XW-Workshop	0	3	0	0	0
No Type Specified	0	0	0	0	0
<b>Total</b>	<b>987</b>	<b>837</b>	<b>817</b>	<b>294</b>	<b>43</b>

Graduate Enrollment

B-Lab	0	0	0	0	0
IVE-Interactive Video	0	0	0	0	0
C-Lecture Lab	0	0	0	0	0
L-Lecture	3	19	8	5	0
WWW-World Wide Web	13	0	0	10	0
XAM-Applied Music	0	0	0	0	0
XDR-Directed Reading	0	0	0	0	0
XFS-Field Study	0	4	9	0	0
XGP-Graduate Project	0	0	0	0	0
XI-Institute	0	0	0	0	0
XIN-Internship	1	0	15	0	0
XIS-Independent Study	0	0	2	0	1
XP-Practicum	0	0	0	0	0
XS-Seminar	25	11	0	0	5
XSP-Graduate Special Topics	0	0	0	0	0
XST-Study Tour	0	0	0	0	4
XSU-Studio Art	0	0	0	0	0
XT-Thesis	1	0	7	0	1
XTA-Advanced Topics	0	0	0	0	0
XTO-Topics	0	0	0	0	0
XW-Workshop	0	0	0	0	0
No Type	0	0	0	0	0
<b>Total</b>	<b>43</b>	<b>34</b>	<b>41</b>	<b>15</b>	<b>11</b>

# **College of Mathematics and Science**

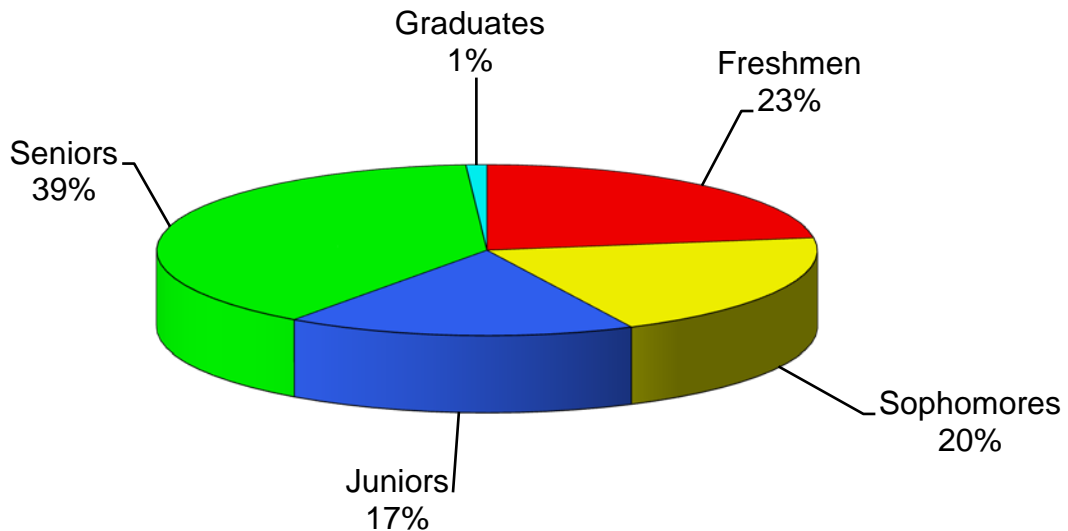
**Summer 2011**

## College of Mathematics and Science Summer Enrollment

	Headcount					5 Year % Diff	FTE					5 Year % Diff
	2007	2008	2009	2010	2011		2007	2008	2009	2010	2011	
Freshmen	177	172	154	223	243	37.3%	111	106	97	139	157	41.4%
Sophomores	144	159	174	201	216	50.0%	92	109	108	140	154	67.4%
Juniors	171	159	200	218	183	7.0%	118	106	124	151	126	7.0%
Seniors	326	347	327	418	419	28.5%	207	229	220	309	290	40.2%
Undergraduates	818	837	855	1,060	1,061	29.7%	528	550	549	739	728	37.8%
Graduates	30	23	22	14	11	-63.3%	21	16	13	8	6	-71.4%
<b>Total</b>	<b>848</b>	<b>860</b>	<b>877</b>	<b>1,074</b>	<b>1,072</b>	<b>26.4%</b>	<b>549</b>	<b>566</b>	<b>562</b>	<b>747</b>	<b>734</b>	<b>33.6%</b>
Audit Only Students*	0	0	0	0	0	---						
Audit Credit Hours	0	0	0	0	0	---						

\*Audit only students and the hours they audit are not reportable.

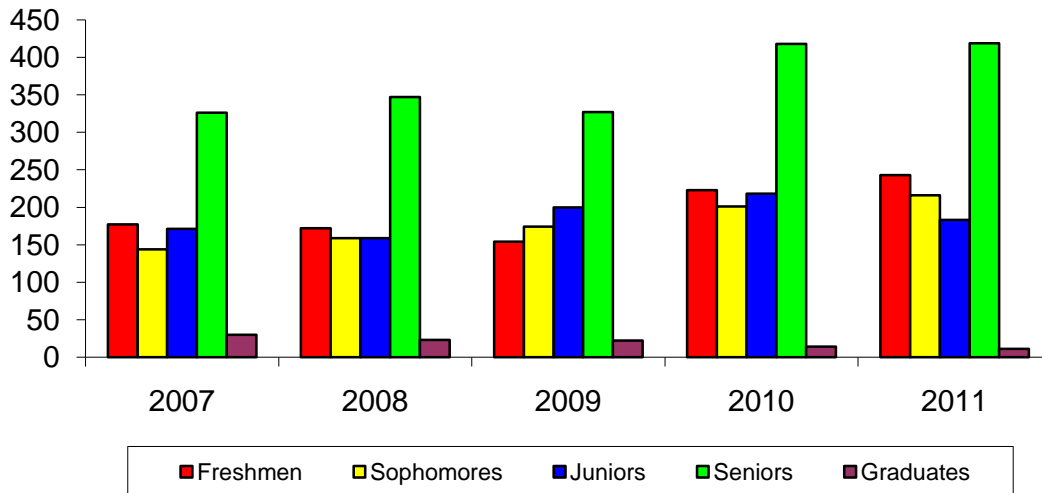
### Percentage of Total Headcount - Summer 2011



## College of Mathematics and Science Summer Headcount Enrollment Trends

	<u>2007</u>	<u>2008</u>	<u>2009</u>	<u>2010</u>	<u>2011</u>	5 Year % Diff
Freshmen	177	172	154	223	243	9.0%
Sophomores	144	159	174	201	216	7.5%
Juniors	171	159	200	218	183	-16.1%
Seniors	326	347	327	418	419	0.2%
Undergraduates	818	837	855	1,060	1,061	0.1%
Graduates	30	23	22	14	11	-21.4%
<b>Total</b>	<b>848</b>	<b>860</b>	<b>877</b>	<b>1,074</b>	<b>1,072</b>	<b>-0.2%</b>
First Time Freshmen	25	24	13	26	29	11.5%
First time UG Transfers	31	40	52	69	65	-5.8%

### Summer Enrollment Trends



**College of Mathematics and Science**  
**Summer 2011 Enrollment**  
**Students by Time of Day\***

	<u>Morning</u>	<u>Afternoon</u>	<u>Evening</u>	<u>Weekend</u>
<u>Headcount</u>				
Freshmen	264	40	5	0
Sophomores	233	69	9	0
Juniors	210	59	22	0
Seniors	410	86	78	19
Post-Baccalaureates	14	2	2	0
Undergraduates	1,131	256	116	19
Graduates	7	3	5	0
<b>Grand Total</b>	<b>1,138</b>	<b>259</b>	<b>121</b>	<b>19</b>

<u>Credit Hours</u>				
Freshmen	955	63	18	0
Sophomores	891	81	28	0
Juniors	793	67	69	0
Seniors	1,504	115	303	19
Post-Baccalaureates	53	1	5	0
Undergraduates	4,196	327	423	19
Graduates	31	6	11	0
<b>Grand Total</b>	<b>4,227</b>	<b>333</b>	<b>434</b>	<b>19</b>

Full-Time Students	676	141	73	4
Part-Time Students	462	118	48	15
Average Age	24	24	27	36

\*Based on CRN College and Student Classification.



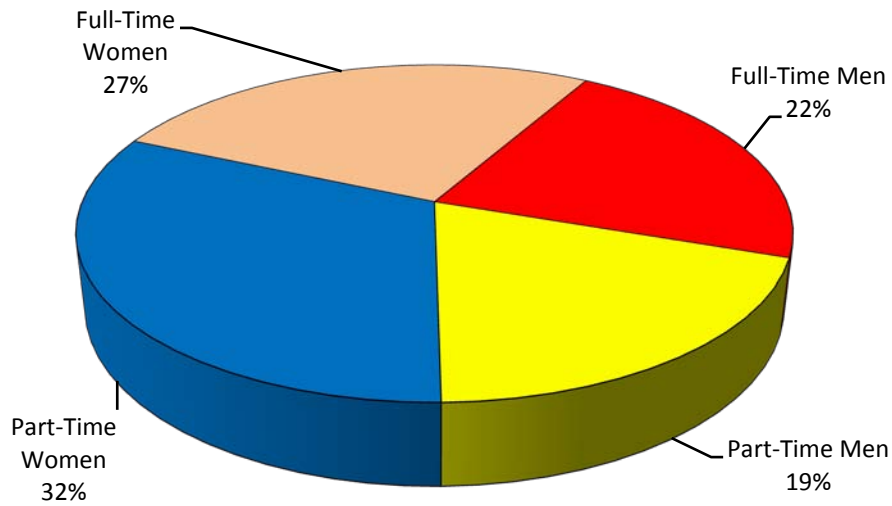
**College of Mathematics and Science**  
**Summer 2011 Enrollment**  
**By Classification and Full-Time/Part-Time Status**

	Full-Time		Part-Time		Total	
	Men	Women	Men	Women	Men	Women
Freshmen	39	65	53	86	92	151
Sophomores	56	62	26	72	82	134
Juniors	41	50	35	57	76	107
Seniors	98	108	93	120	191	228
Undergraduates	234	285	207	335	441	620
Graduates	1	2	2	6	3	8
Total	235	287	209	341	444	628

**Grand Total**                      **522**                      **550**                      **1,072**

Percentage of  
Total Headcount              48.7%                      51.3%                      100.0%

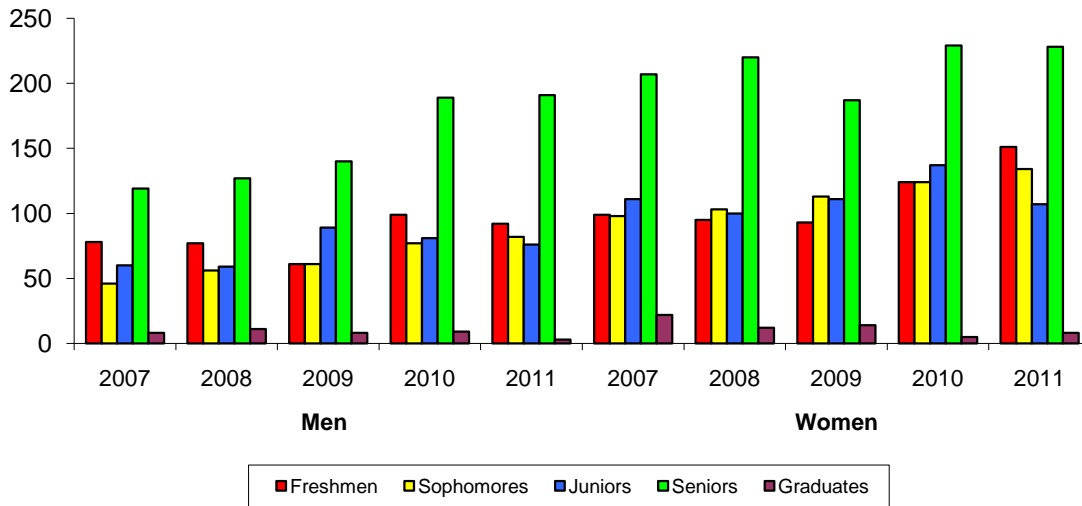
**Gender and Full/Part-Time Status**



## College of Mathematics and Science Summer Enrollment By Classification and Gender

	Men					5 Year % Diff	Women					5 Year % Diff
	2007	2008	2009	2010	2011		2007	2008	2009	2010	2011	
Freshmen	78	77	61	99	92	17.9%	99	95	93	124	151	52.5%
Sophomores	46	56	61	77	82	78.3%	98	103	113	124	134	36.7%
Juniors	60	59	89	81	76	26.7%	111	100	111	137	107	-3.6%
Seniors	119	127	140	189	191	60.5%	207	220	187	229	228	10.1%
Graduates	8	11	8	9	3	-62.5%	22	12	14	5	8	-63.6%
<b>Total</b>	<b>311</b>	<b>330</b>	<b>359</b>	<b>455</b>	<b>444</b>	<b>42.8%</b>	<b>537</b>	<b>530</b>	<b>518</b>	<b>619</b>	<b>628</b>	<b>16.9%</b>
% of Yearly Total	37%	38%	41%	42%	41%	12.9%	63%	62%	59%	58%	59%	-7.5%

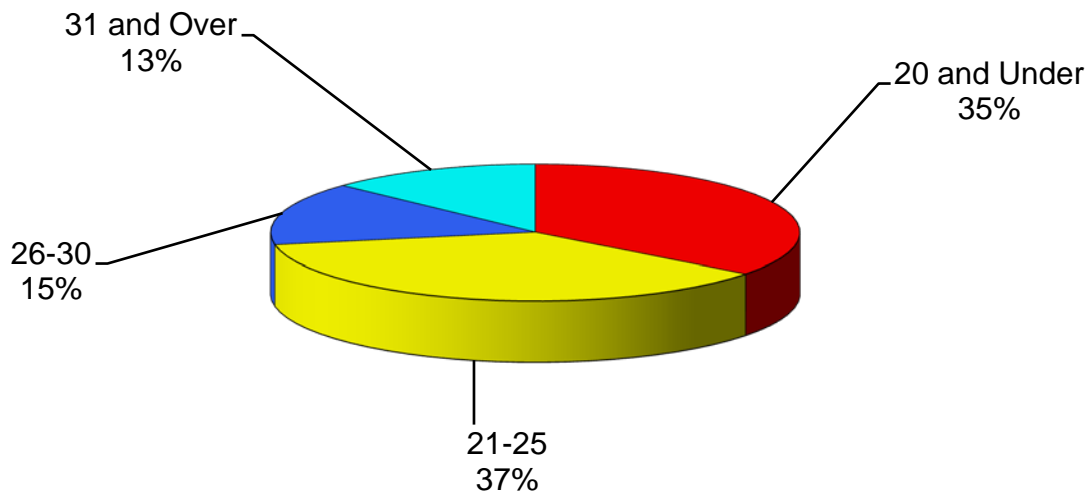
### Men/Women Comparison



**College of Mathematics and Science  
Summer Enrollment  
Age Distribution Analysis**

	<u>2007</u>	<u>2008</u>	<u>2009</u>	<u>2010</u>	<u>2011</u>	<u>5 Year Diff</u>
20 and Under	31.8%	30.7%	33.2%	30.4%	35.4%	3.6%
21-25	41.9%	43.1%	40.6%	42.9%	36.6%	-5.3%
26-30	12.0%	13.6%	14.0%	14.0%	15.0%	3.0%
31 and Over	14.3%	12.6%	12.2%	12.7%	13.0%	-1.3%
Average Age	24	24	24	24	24	0

**Age Distribution - Summer 2011**



**College of Mathematics and Science**  
**Summer 2011 Enrollment**  
**Ethnicity/Race Comparison**

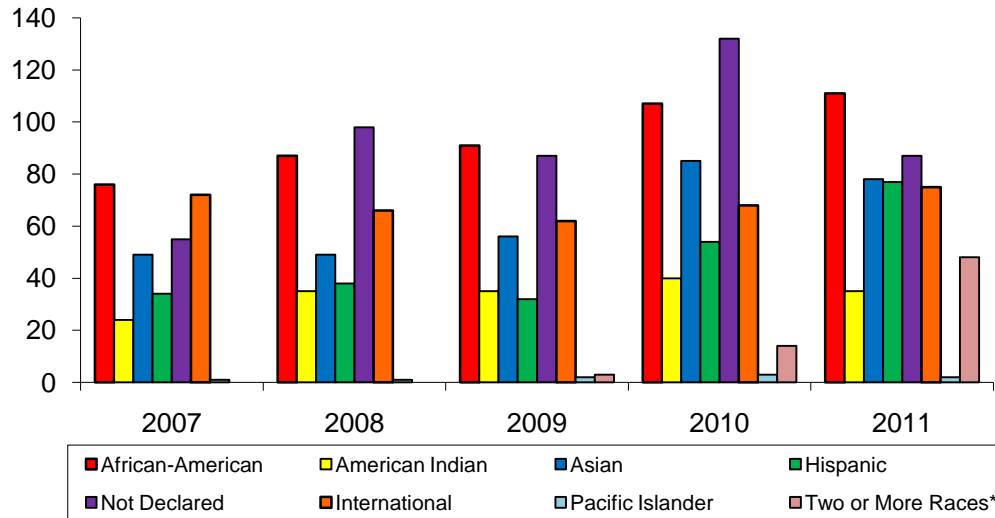
	<u>Men</u>	<u>Women</u>	<u>Total</u>	<u>% of Total</u>
Caucasian	218	341	559	52.1%
African-American	33	78	111	10.4%
American Indian	13	22	35	3.3%
Asian	32	46	78	7.3%
Hispanic	32	45	77	7.2%
International	51	24	75	7.0%
Pacific Islander	0	2	2	0.2%
Two or More Races	17	31	48	4.5%
Not Declared	48	39	87	8.1%
<b>Total</b>	<b>444</b>	<b>628</b>	<b>1,072</b>	<b>100.0%</b>

## College of Mathematics and Science Summer Enrollment Ethnicity/Race Comparison

	<u>2007</u>	<u>2008</u>	<u>2009</u>	<u>2010</u>	<u>2011</u>	<u>5 Year % Diff</u>
Caucasian	537	486	509	571	559	4.1%
African-American	76	87	91	107	111	46.1%
American Indian	24	35	35	40	35	45.8%
Asian	49	49	56	85	78	59.2%
Hispanic	34	38	32	54	77	126.5%
International	72	66	62	68	75	4.2%
Pacific Islander	1	1	2	3	2	100.0%
Two or More Races*	---	---	3	14	48	---
Not Declared	55	98	87	132	87	58.2%
<b>Total</b>	<b>848</b>	<b>860</b>	<b>877</b>	<b>1,074</b>	<b>1,072</b>	<b>26.4%</b>

\* Category added to meet federal methodology.

### Ethnicity/Race Comparison



# College of Mathematics and Science

## Summer 2011 Enrollment

### Part of Term and Course Type\*

	<u>Block 1</u>	<u>Block 2</u>	<u>Full Term</u>	<u>Intersession</u>	<u>Irregular</u>
<b>Number of Sections</b>					
Undergraduate	8	4	101	0	3
Graduate	0	0	6	0	1
<b>Total</b>	<b>8</b>	<b>4</b>	<b>107</b>	<b>0</b>	<b>4</b>
<b>Undergraduate Enrollment</b>					
B-Lab	22	41	161	0	0
C-Lecture Lab	0	0	19	0	0
CL-Clinical Lab	0	0	22	0	0
HYB-Hybrid	0	0	0	0	0
IVE-Interactive Video	0	0	0	0	0
L-Lecture	131	75	1,159	0	0
LCR-Lab with Credit	0	0	134	0	0
R-Recitation/Lab	0	0	26	0	0
WWW-World Wide Web	0	0	253	0	0
XAM-Applied Music	0	0	0	0	0
XDR-Directed Reading	0	0	0	0	0
XFS-Field Study	0	0	0	0	0
XI-Institute	0	0	0	0	9
XIN-Internship	0	0	1	0	1
XIS-Independent Study	0	0	9	0	0
XP-Practicum	0	0	9	0	0
XS-Seminar	0	0	3	0	19
XST-Study Tour	0	0	0	0	0
XSU-Studio Art	0	0	0	0	0
XTA-Advanced Topics	0	0	16	0	0
XTO-Topics	0	0	7	0	0
XW-Workshop	0	0	0	0	0
No Type Specified	0	0	0	0	0
<b>Total</b>	<b>153</b>	<b>116</b>	<b>1,819</b>	<b>0</b>	<b>29</b>
<b>Graduate Enrollment</b>					
B-Lab	0	0	0	0	0
HYB-Hybrid	0	0	0	0	0
IVE-Interactive Video	0	0	0	0	0
L-Lecture	0	0	0	0	0
LCR-Lab with Credit	0	0	0	0	0
WWW-World Wide Web	0	0	0	0	0
XAM-Applied Music	0	0	0	0	0
XDR-Directed Reading	0	0	0	0	0
XFS Field Study	0	0	0	0	0
XGP-Graduate Project	0	0	1	0	0
XI-Institute	0	0	0	0	3
XIN-Internship	0	0	0	0	0
XIS-Independent Study	0	0	1	0	0
XP-Practicum	0	0	0	0	0
XS-Seminar	0	0	1	0	0
XSP-Graduate Special Topics	0	0	0	0	0
XST-Study Tour	0	0	0	0	0
XSU-Studio Art	0	0	0	0	0
XT-Thesis	0	0	3	0	0
XW-Workshop	0	0	0	0	0
No Type Specified	0	0	0	0	0
<b>Total</b>	<b>0</b>	<b>0</b>	<b>6</b>	<b>0</b>	<b>3</b>

# **Interdisciplinary Studies**

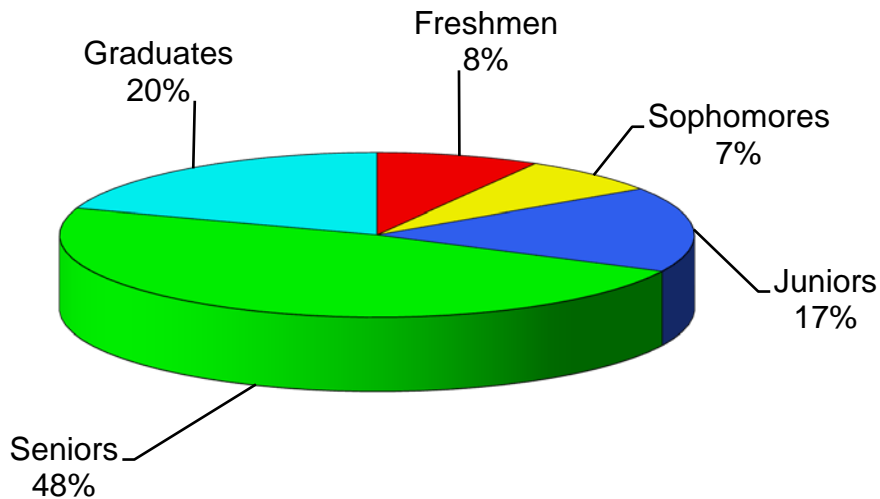
**Summer 2011**

## Interdisciplinary Studies Summer Enrollment

	Headcount					2 Year % Diff	FTE					2 Year % Diff
	2007	2008	2009	2010	2011		2007	2008	2009	2010	2011	
Freshmen	---	---	---	9	8	-11.1%	---	---	---	7	6	-14.3%
Sophomores	---	---	---	6	7	16.7%	---	---	---	4	4	0.0%
Juniors	---	---	---	7	16	128.6%	---	---	---	5	11	112.0%
Seniors	---	---	---	28	46	64.3%	---	---	---	17	35	103.5%
Undergraduates	---	---	---	50	77	54.0%	---	---	---	33	55	67.3%
Graduates	---	---	---	14	19	35.7%	---	---	---	9	10	11.1%
<b>Total</b>	---	---	---	<b>64</b>	<b>96</b>	<b>50.0%</b>	---	---	---	<b>42</b>	<b>65</b>	<b>55.2%</b>
Audit Only Students*	---	---	---	0	0	---						
Audit Credit Hours	---	---	---	0	0	---						

\*Audit only students and the hours they audit are not reportable.

### Percentage of Total Headcount - Summer 2011

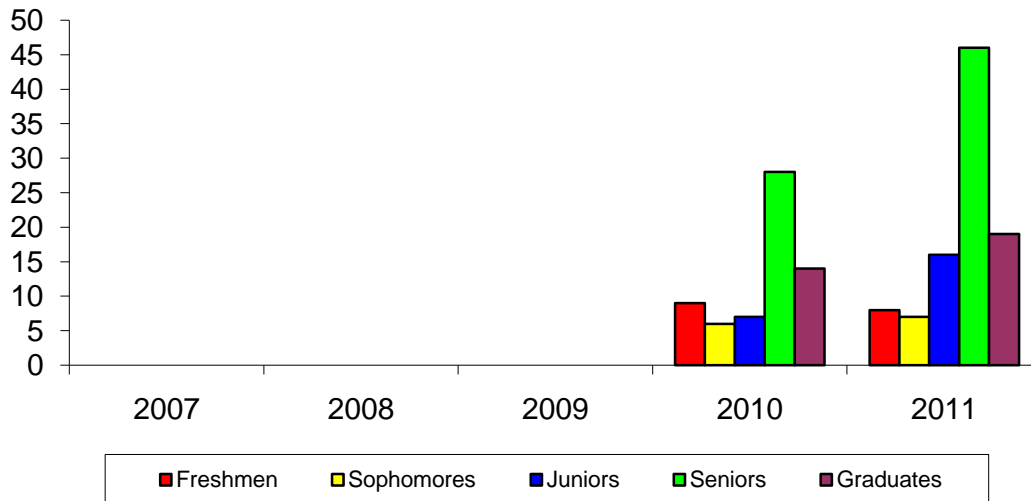




## Interdisciplinary Studies Summer Headcount Enrollment Trends

	<u>2007</u>	<u>2008</u>	<u>2009</u>	<u>2010</u>	<u>2011</u>	<u>2 Year % Diff</u>
Freshmen	---	---	---	9	8	-11.1%
Sophomores	---	---	---	6	7	16.7%
Juniors	---	---	---	7	16	128.6%
Seniors	---	---	---	28	46	64.3%
Undergraduates	---	---	---	50	77	54.0%
Graduates	---	---	---	14	19	35.7%
<b>Total</b>	---	---	---	<b>64</b>	<b>96</b>	<b>50.0%</b>
First Time Freshmen	---	---	---	1	1	0.0%
First Time UG Transfers	---	---	---	3	10	233.3%

### Summer Enrollment Trends



**Interdisciplinary Studies  
Summer 2011 Enrollment  
Students by Time of Day\***

	<u>Morning</u>	<u>Afternoon</u>	<u>Evening</u>	<u>Weekend</u>
<u>Headcount</u>				
Freshmen	8	0	0	0
Sophomores	2	1	0	3
Juniors	13	12	0	5
Seniors	21	11	0	17
Post-Baccalaureates	0	0	0	0
Undergraduates	44	24	0	25
Graduates	6	4	0	0
<b>Grand Total</b>	<b>50</b>	<b>28</b>	<b>0</b>	<b>25</b>

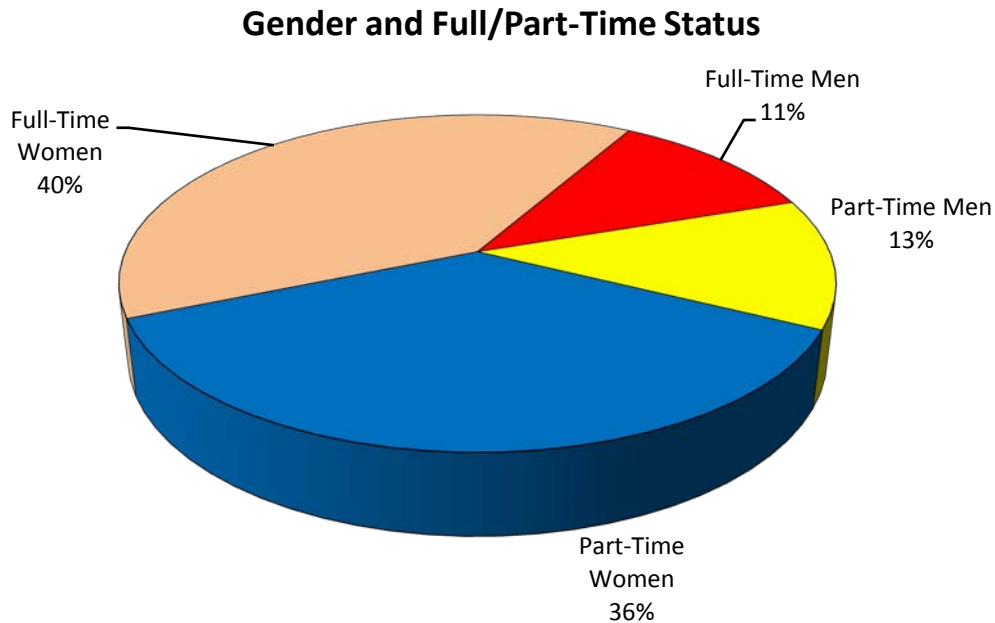
<u>Credit Hours</u>				
Freshmen	16	0	0	0
Sophomores	9	0	0	3
Juniors	57	0	0	5
Seniors	83	0	0	21
Post-Baccalaureates	0	0	0	0
Undergraduates	165	0	0	29
Graduates	21	0	0	0
<b>Grand Total</b>	<b>186</b>	<b>0</b>	<b>0</b>	<b>29</b>

Full-Time Students	33	23	0	18
Part-Time Students	17	5	0	7
Average Age	24	26	---	26

\*Based on CRN College and Student Classification.

## Interdisciplinary Studies Summer 2011 Enrollment By Classification and Full-Time/Part-Time Status

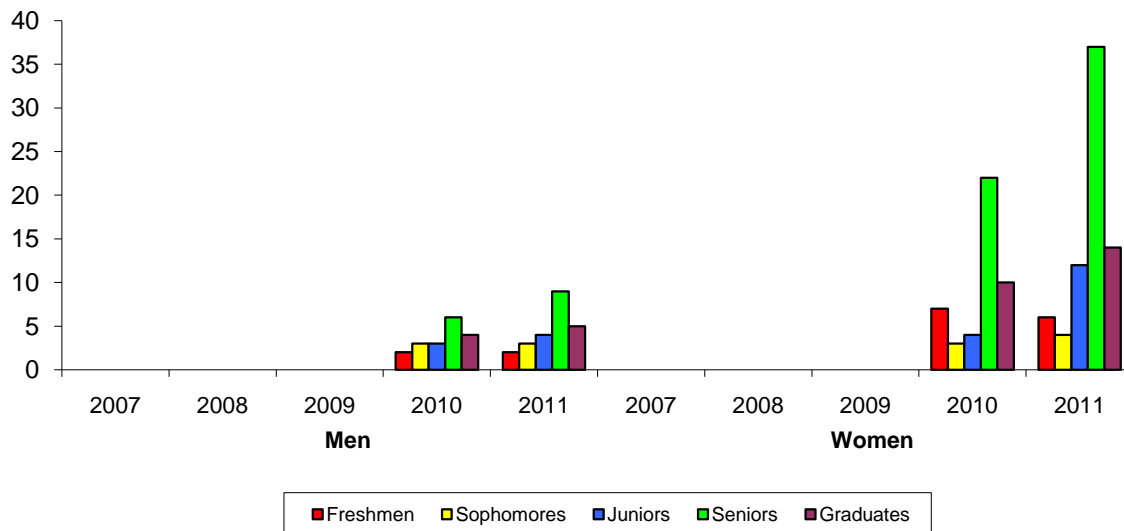
	Full-Time		Part-Time		Total	
	Men	Women	Men	Women	Men	Women
Freshmen	1	4	1	2	2	6
Sophomores	1	2	2	2	3	4
Juniors	3	6	1	6	4	12
Seniors	5	22	4	15	9	37
Undergraduates	10	34	8	25	18	59
Graduates	1	4	4	10	5	14
Total	11	38	12	35	23	73
<b>Grand Total</b>	<b>49</b>		<b>47</b>		<b>96</b>	
Percentage of Total Headcount	51.0%		49.0%		100.0%	



## Interdisciplinary Studies Summer Enrollment By Classification and Gender

	Men					2 Year % Diff	Women					2 Year % Diff
	2007	2008	2009	2010	2011		2007	2008	2009	2010	2011	
Freshmen	---	---	---	2	2	0.0%	---	---	---	7	6	-14.3%
Sophomores	---	---	---	3	3	0.0%	---	---	---	3	4	33.3%
Juniors	---	---	---	3	4	33.3%	---	---	---	4	12	200.0%
Seniors	---	---	---	6	9	50.0%	---	---	---	22	37	68.2%
Graduates	---	---	---	4	5	25.0%	---	---	---	10	14	40.0%
<b>Total</b>	---	---	---	<b>18</b>	<b>23</b>	<b>27.8%</b>	---	---	---	<b>46</b>	<b>73</b>	<b>58.7%</b>
% of Yearly Total	---	---	---	28%	24%	-14.8%	---	---	---	72%	76%	5.8%

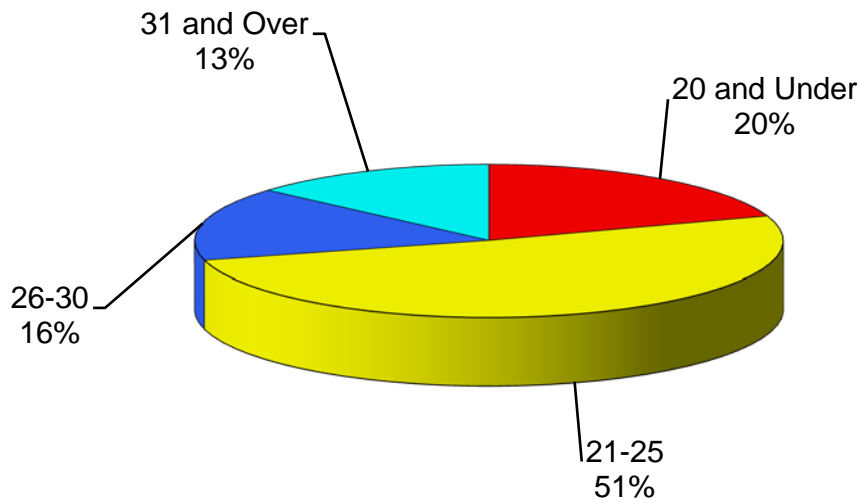
### Men/Women Comparison



## Interdisciplinary Studies Summer Enrollment Age Distribution Analysis

	<u>2007</u>	<u>2008</u>	<u>2009</u>	<u>2010</u>	<u>2011</u>	2 Year <u>Diff</u>
20 and Under	---	---	---	28.1%	19.8%	-8.3%
21-25	---	---	---	42.2%	51.0%	8.9%
26-30	---	---	---	12.5%	15.6%	3.1%
31 and Over	---	---	---	17.2%	13.5%	-3.6%
Average Age	---	---	---	26	25	-1

**Age Distribution - Summer 2011**



**Interdisciplinary Studies  
Summer 2011 Enrollment  
Ethnicity/Race Comparison**

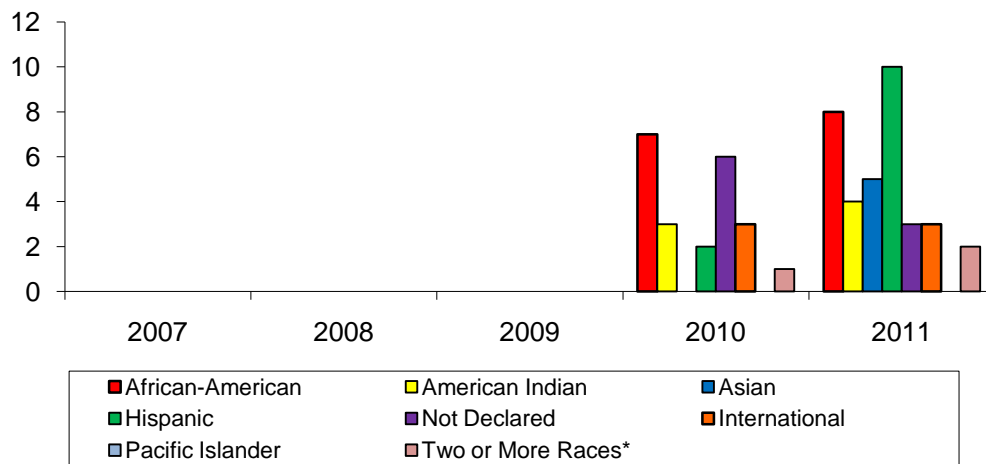
	<u>Men</u>	<u>Women</u>	<u>Total</u>	<u>% of Total</u>
Caucasian	16	45	61	63.5%
African-American	2	6	8	8.3%
American Indian	1	3	4	4.2%
Asian	0	5	5	5.2%
Hispanic	1	9	10	10.4%
International	1	2	3	3.1%
Pacific Islander	0	0	0	0.0%
Two or More Races	1	1	2	2.1%
Not Declared	1	2	3	3.1%
<b>Total</b>	<b>23</b>	<b>73</b>	<b>96</b>	<b>100.0%</b>

## Interdisciplinary Studies Summer Enrollment Ethnicity/Race Comparison

	<u>2007</u>	<u>2008</u>	<u>2009</u>	<u>2010</u>	<u>2011</u>	<u>2 Year % Diff</u>
Caucasian	---	---	---	42	61	45.2%
African-American	---	---	---	7	8	14.3%
American Indian	---	---	---	3	4	33.3%
Asian	---	---	---	0	5	---
Hispanic	---	---	---	2	10	400.0%
International	---	---	---	3	3	0.0%
Pacific Islander	---	---	---	0	0	---
Two or More Races*	---	---	---	1	2	100.0%
Not Declared	---	---	---	6	3	-50.0%
<b>Total</b>	---	---	---	<b>64</b>	<b>96</b>	<b>50.0%</b>

\* Category added to meet federal methodology.

### Ethnicity/Race Comparison



**Interdisciplinary Studies**  
**Summer 2011 Enrollment**  
**Part of Term and Course Type\***

	<u>Block 1</u>	<u>Block 2</u>	<u>Full Term</u>	<u>Intersession</u>	<u>Irregular</u>
<u>Number of Sections</u>					
Undergraduate	1	4	4	1	2
Graduate	0	3	6	1	0
<b>Total</b>	<b>1</b>	<b>7</b>	<b>10</b>	<b>2</b>	<b>2</b>
<u>Undergraduate Enrollment</u>					
B-Lab	0	24	0	0	0
C-Lecture Lab	9	0	0	0	0
CL-Clinical Lab	0	0	0	0	0
IVE-Interactive Video	0	0	0	0	0
L-Lecture	0	49	0	19	0
LCR-Lab with Credit	0	0	0	0	0
R-Recitation/Lab	0	0	0	0	0
WWW-World Wide Web	0	0	48	0	0
XAM-Applied Music	0	0	6	0	0
XDR-Directed Reading	0	0	0	0	0
XFS-Field Study	0	0	0	0	0
XI-Institute	0	0	0	0	0
XIN-Internship	0	0	0	0	0
XIS-Independent Study	0	0	0	0	0
XP-Practicum	0	0	0	0	0
XS-Seminar	0	3	1	0	0
XST-Study Tour	0	0	0	0	0
XSU-Studio Art	0	0	0	0	0
XTA-Advanced Topics	0	0	0	0	29
XTO-Topics	0	0	0	0	0
XW-Workshop	0	0	0	0	0
No Type Specified	0	0	0	0	0
<b>Total</b>	<b>9</b>	<b>76</b>	<b>55</b>	<b>19</b>	<b>29</b>
<u>Graduate Enrollment</u>					
B-Lab	0	4	0	0	0
C-Lecture Lab	0	4	0	0	0
IVE-Interactive Video	0	0	0	0	0
L-Lecture	0	3	0	5	0
LCR-Lab with Credit	0	0	0	0	0
WWW-World Wide Web	0	0	0	0	0
XAM-Applied Music	0	0	0	0	0
XDR-Directed Reading	0	0	0	0	0
XFS Field Study	0	0	1	0	0
XGP-Graduate Project	0	0	0	0	0
XI-Institute	0	0	0	0	0
XIN-Internship	0	0	0	0	0
XIS-Independent Study	0	0	0	0	0
XP-Practicum	0	0	0	0	0
XS-Seminar	0	0	0	0	0
XSP-Graduate Special Topics	0	0	0	0	0
XST-Study Tour	0	0	0	0	0
XSU-Studio Art	0	0	0	0	0
XT-Thesis	0	0	9	0	0
XW-Workshop	0	0	0	0	0
No Type Specified	0	0	0	0	0
<b>Total</b>	<b>0</b>	<b>11</b>	<b>10</b>	<b>5</b>	<b>0</b>



# **College of Graduate Studies**

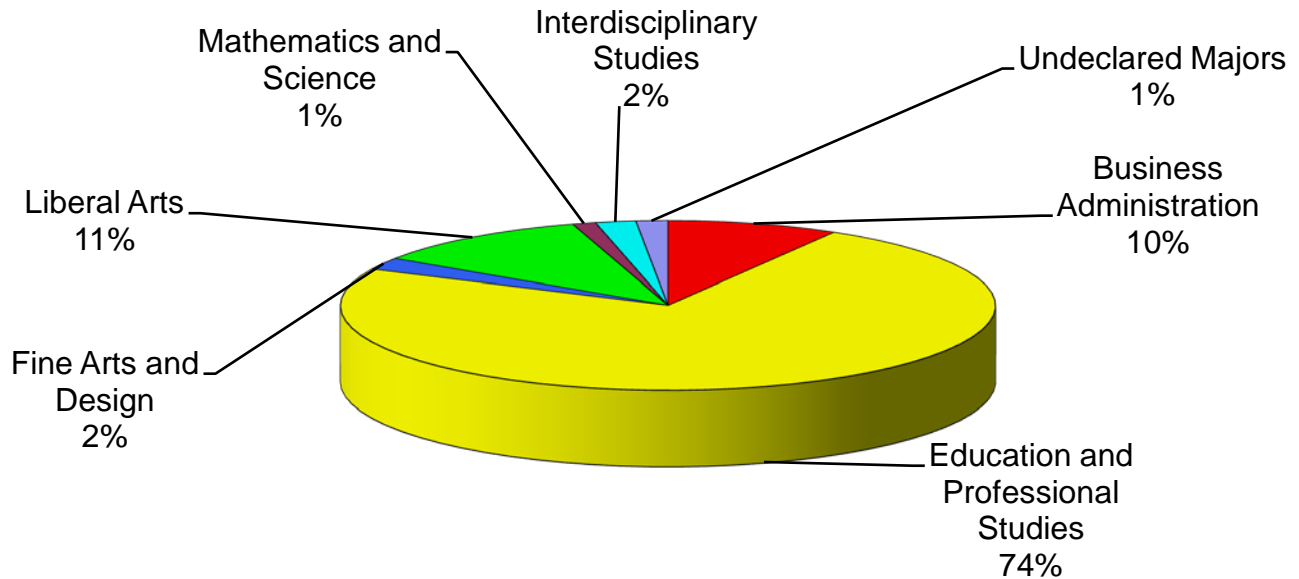
**Summer 2011**

## College of Graduate Studies Summer Enrollment

	Headcount					5 Year % Diff	FTE					5 Year % Diff
	2007	2008	2009	2010	2011		2007	2008	2009	2010	2011	
Business Administration	62	61	63	99	81	30.6%	46	49	67	81	68	47.8%
Education and Professional Studies	544	598	658	701	703	29.2%	441	473	503	561	606	37.3%
Fine Arts and Design	14	18	24	19	22	57.1%	14	15	32	21	21	50.0%
Liberal Arts	61	68	75	107	105	72.1%	45	46	50	73	80	76.9%
Mathematics and Science	30	23	22	14	11	-63.3%	21	16	13	8	6	-71.4%
Interdisciplinary Studies	---	---	---	14	19	---	---	---	---	9	10	---
Undeclared Majors	25	34	44	22	15	-40.0%	17	21	23	13	10	-41.2%
<b>Total</b>	<b>736</b>	<b>802</b>	<b>886</b>	<b>976</b>	<b>956</b>	<b>29.9%</b>	<b>584</b>	<b>620</b>	<b>687</b>	<b>766</b>	<b>800</b>	<b>37.0%</b>
Audit Only Students*	2	0	0	0	0	-100.0%						
Audit Credit Hours	5	0	0	0	0	-100.0%						

\*Audit only students and the hours they audit are not reportable.

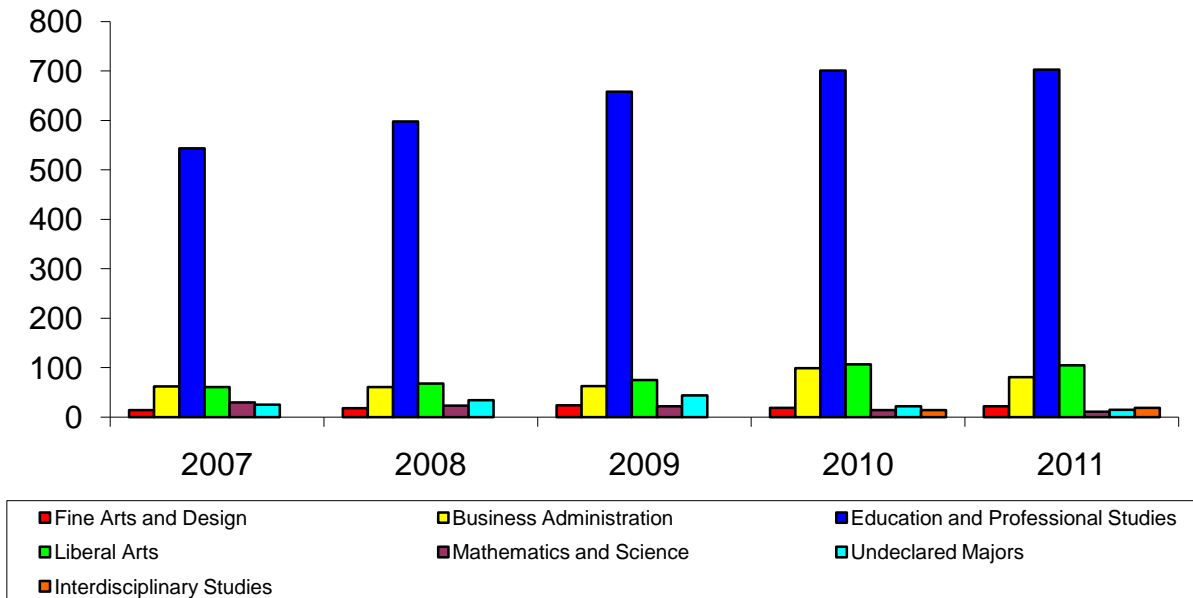
### Percentage of Total Headcount - Summer 2011



## College of Graduate Studies Summer Headcount Enrollment Trends

	<u>2007</u>	<u>2008</u>	<u>2009</u>	<u>2010</u>	<u>2011</u>	5 Year % Diff
Business Administration	62	61	63	99	81	30.6%
Education and Professional Studies	544	598	658	701	703	29.2%
Fine Arts and Design	14	18	24	19	22	57.1%
Liberal Arts	61	68	75	107	105	72.1%
Mathematics and Science	30	23	22	14	11	-63.3%
Interdisciplinary Studies	---	---	---	14	19	---
Undeclared Majors	25	34	44	22	15	-40.0%
<b>Grand Total</b>	<b>736</b>	<b>802</b>	<b>886</b>	<b>976</b>	<b>956</b>	<b>29.9%</b>
 First Time Graduates	 103	 120	 146	 122	 140	 35.9%

### Summer Enrollment Trends



**College of Graduate Studies  
Summer 2011 Enrollment  
Students by Time of Day\***

	<u>Morning</u>	<u>Afternoon</u>	<u>Evening</u>	<u>Weekend</u>
<b><u>Headcount</u></b>				
Business Administration	0	2	82	0
Education and Professional Studies	378	227	131	62
Fine Arts and Design	8	4	0	4
Interdisciplinary Studies	6	4	0	0
Liberal Arts	19	7	42	5
Mathematics and Science	7	3	5	0
<b>Grand Total</b>	<b>418</b>	<b>247</b>	<b>260</b>	<b>71</b>
<b><u>Credit Hours</u></b>				
Business Administration	0	9	399	0
Education and Professional Studies	1,606	703	346	146
Fine Arts and Design	23	12	0	12
Interdisciplinary Studies	21	0	0	0
Liberal Arts	76	21	167	15
Mathematics and Science	31	6	11	0
<b>Grand Total</b>	<b>1,757</b>	<b>751</b>	<b>923</b>	<b>173</b>
Full-Time Students	331	192	184	38
Part-Time Students	84	54	72	33
Average Age	33	33	32	38

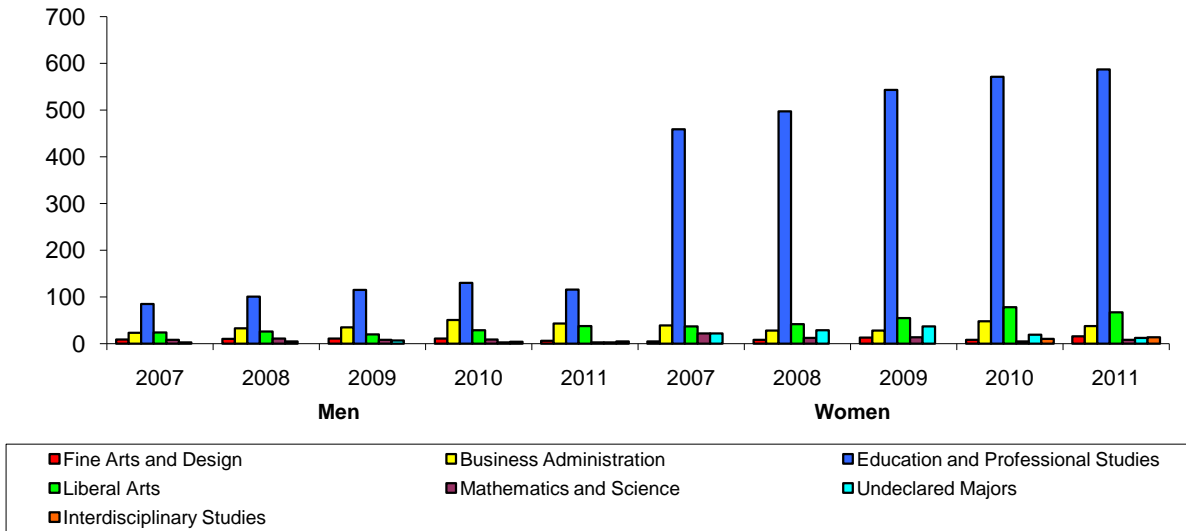
\*Based on CRN College and Student Classification.



## College of Graduate Studies Summer Enrollment By College and Gender

	Men					5 Year % Diff	Women					5 Year % Diff
	2007	2008	2009	2010	2011		2007	2008	2009	2010	2011	
Business Administration	23	33	35	51	43	87.0%	39	28	28	48	38	-2.6%
Education and Professional Studies	85	101	115	130	116	36.5%	459	497	543	571	587	27.9%
Fine Arts and Design	9	10	11	11	6	-33.3%	5	8	13	8	16	220.0%
Liberal Arts	24	26	20	29	38	58.3%	37	42	55	78	67	81.1%
Mathematics and Science	8	11	8	9	3	-62.5%	22	12	14	5	8	-63.6%
Interdisciplinary Studies	---	---	---	4	5	---	---	---	---	10	14	---
Undeclared Majors	3	5	7	3	3	0.0%	22	29	37	19	12	-45.5%
<b>Total</b>	<b>152</b>	<b>186</b>	<b>196</b>	<b>237</b>	<b>214</b>	<b>40.8%</b>	<b>584</b>	<b>616</b>	<b>690</b>	<b>739</b>	<b>742</b>	<b>27.1%</b>
% of Yearly Total	21%	23%	22%	24%	22%	8.4%	79%	77%	78%	76%	78%	-2.2%

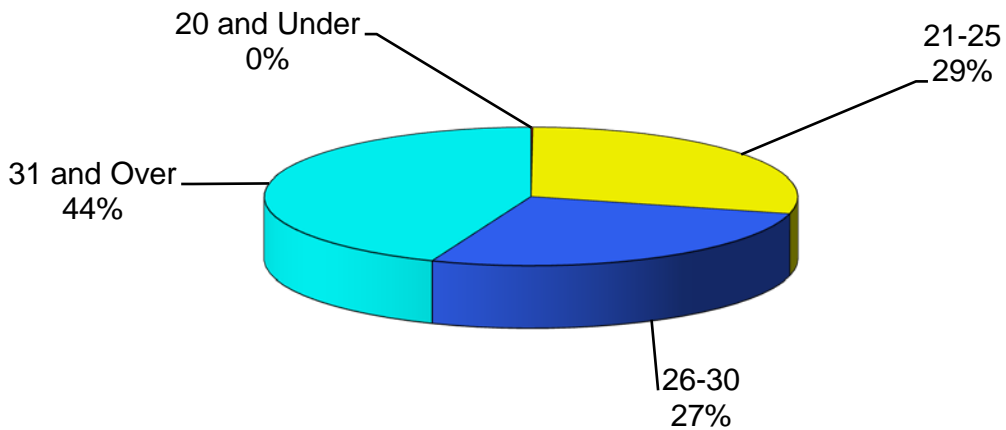
### Men/Women Comparison



**College of Graduate Studies  
Summer Enrollment  
Age Distribution Analysis**

	<u>2007</u>	<u>2008</u>	<u>2009</u>	<u>2010</u>	<u>2011</u>	<u>5 Year Diff</u>
20 and Under	0.0%	0.0%	0.0%	0.0%	0.1%	0.1%
21-25	30.3%	26.2%	26.9%	27.0%	28.9%	-1.4%
26-30	23.2%	24.1%	23.8%	24.9%	27.0%	3.8%
31 and Over	46.5%	49.7%	49.3%	48.1%	43.9%	-2.6%
Average Age	33	34	34	33	33	0

**Age Distribution - Summer 2011**



**College of Graduate Studies  
 Summer 2011 Enrollment  
 Ethnicity/Race Comparison**

	<u>Men</u>	<u>Women</u>	<u>Total</u>	<u>% of Total</u>
Caucasian	161	513	674	70.5%
African-American	12	70	82	8.6%
American Indian	3	26	29	3.0%
Asian	4	8	12	1.3%
Hispanic	6	34	40	4.2%
International	16	42	58	6.1%
Pacific Islander	1	2	3	0.3%
Two or More Races	3	24	27	2.8%
Not Declared	8	23	31	3.2%
<b>Total</b>	<b>214</b>	<b>742</b>	<b>956</b>	<b>100.0%</b>

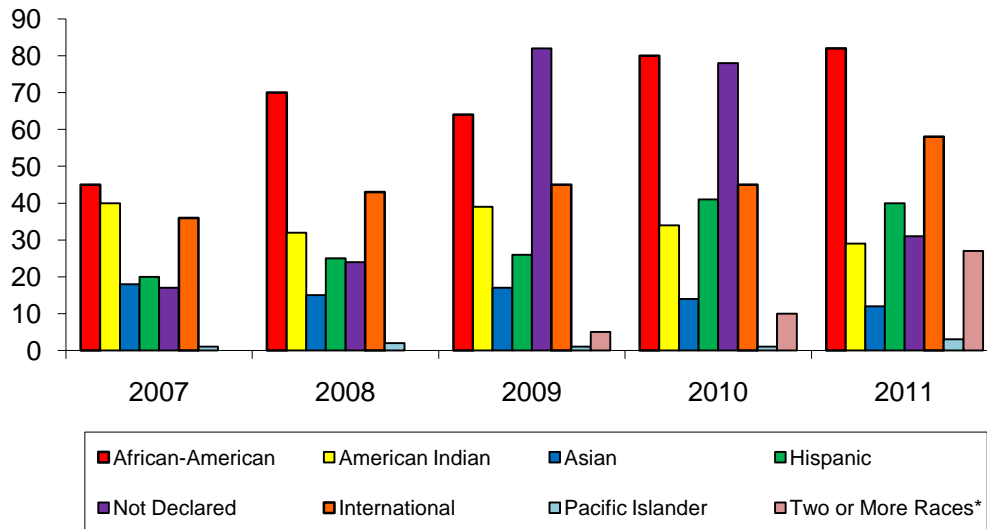


## College of Graduate Studies Summer Enrollment Ethnicity/ Race Comparison

	<u>2007</u>	<u>2008</u>	<u>2009</u>	<u>2010</u>	<u>2011</u>	<u>5 Year % Diff</u>
Caucasian	559	591	607	673	674	20.6%
African-American	45	70	64	80	82	82.2%
American Indian	40	32	39	34	29	-27.5%
Asian	18	15	17	14	12	-33.3%
Hispanic	20	25	26	41	40	100.0%
International	36	43	45	45	58	61.1%
Pacific Islander	1	2	1	1	3	200.0%
Two or More Races*	---	---	5	10	27	---
Not Declared	17	24	82	78	31	82.4%
<b>Total</b>	<b>736</b>	<b>802</b>	<b>886</b>	<b>976</b>	<b>956</b>	<b>29.9%</b>

\* Category added to meet federal methodology.

### Ethnicity/Race Comparison



# **Undeclared Majors\***

**Summer 2011**

\* Includes undeclared majors and other majors not associated with a department.

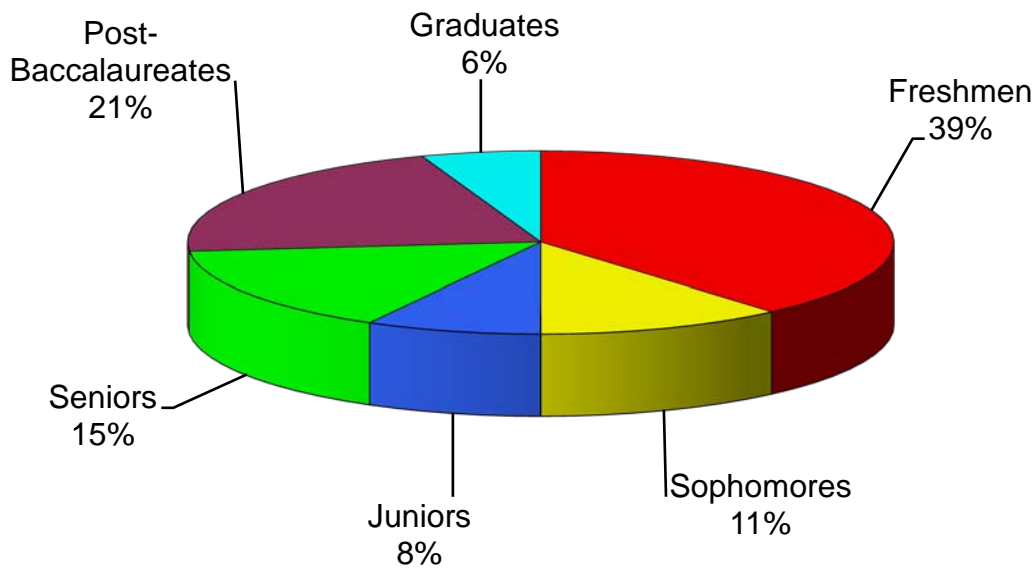
L:\Inst Research\Major Processes\Enrollment Demo Books\Files for All Books\dividers

## Undeclared Majors Summer Enrollment

	Headcount					5 Year % Diff	FTE					5 Year % Diff
	2007	2008	2009	2010	2011		2007	2008	2009	2010	2011	
Freshmen	332	247	256	158	106	-68.1%	170	136	140	87	58	-66.1%
Sophomores	110	57	71	44	31	-71.8%	65	33	46	27	19	-70.8%
Juniors	103	63	64	57	22	-78.6%	67	39	40	37	15	-77.6%
Seniors	115	73	71	55	42	-63.5%	76	47	45	33	26	-65.8%
Post-Baccalaureates	81	76	73	63	58	-28.4%	42	41	38	32	30	-29.5%
<b>Undergraduates</b>	<b>741</b>	<b>516</b>	<b>535</b>	<b>377</b>	<b>259</b>	<b>-65.0%</b>	<b>420</b>	<b>296</b>	<b>310</b>	<b>216</b>	<b>147</b>	<b>-65.0%</b>
Graduates	25	34	44	22	15	-40.0%	17	21	23	13	10	-41.2%
<b>Total</b>	<b>766</b>	<b>550</b>	<b>579</b>	<b>399</b>	<b>274</b>	<b>-64.2%</b>	<b>437</b>	<b>317</b>	<b>332</b>	<b>229</b>	<b>157</b>	<b>-64.0%</b>
Audit Only Students*	0	0	1	0	2	---						
Audit Credit Hours	0	0	0	0	9	---						

\*Audit only students and the hours they audit are not reportable.

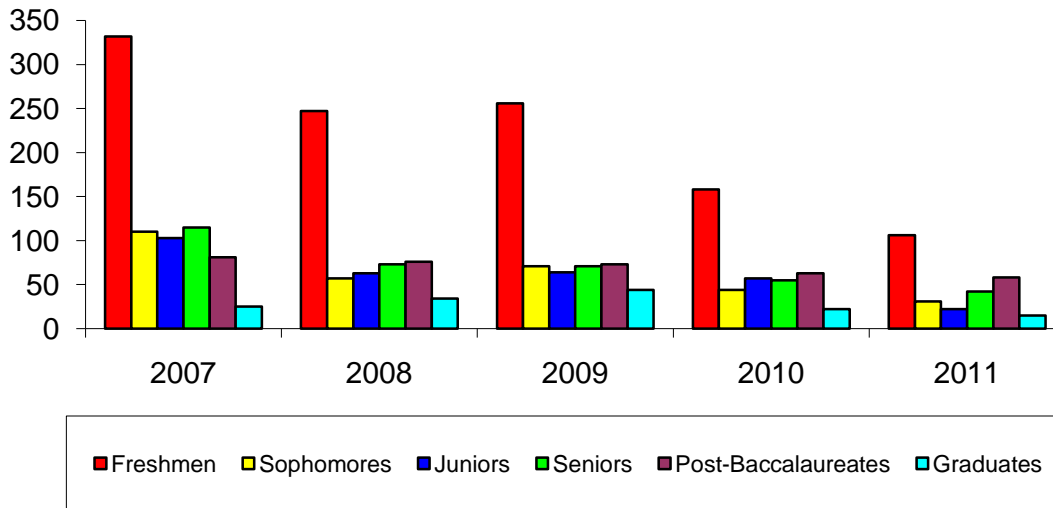
## Percentage of Total Headcount - Summer 2011



## Undeclared Majors Summer Headcount Enrollment Trends

	<u>2007</u>	<u>2008</u>	<u>2009</u>	<u>2010</u>	<u>2011</u>	5 Year % Diff
Freshmen	332	247	256	158	106	-68.1%
Sophomores	110	57	71	44	31	-71.8%
Juniors	103	63	64	57	22	-78.6%
Seniors	115	73	71	55	42	-63.5%
Post-Baccalaureates	81	76	73	63	58	-28.4%
<b>Undergraduates</b>	<b>741</b>	<b>516</b>	<b>535</b>	<b>377</b>	<b>259</b>	<b>-65.0%</b>
Graduates	25	34	44	22	15	-40.0%
<b>Total</b>	<b>766</b>	<b>550</b>	<b>579</b>	<b>399</b>	<b>274</b>	<b>-64.2%</b>
First Time Freshmen	34	18	25	20	9	-73.5%
First time UG Transfers	60	29	55	12	10	-83.3%

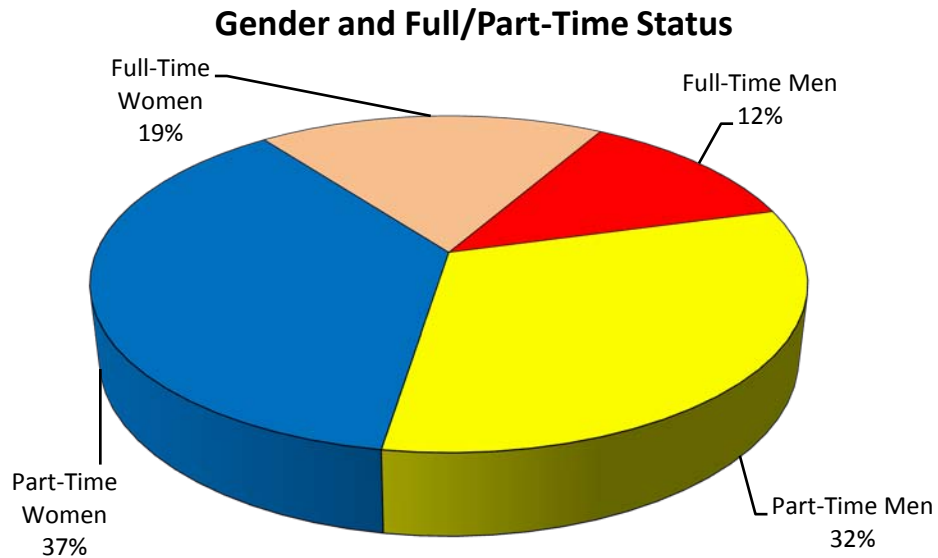
### Summer Enrollment Trends



## Undeclared Majors Summer 2011 Enrollment By Classification and Full-Time/Part-Time Status

	Full-Time		Part-Time		Total	
	Men	Women	Men	Women	Men	Women
Freshmen	13	15	40	38	53	53
Sophomores	4	7	7	13	11	20
Juniors	3	8	6	5	9	13
Seniors	7	10	10	15	17	25
Post-Baccalaureates	6	8	22	22	28	30
Undergraduates	33	48	85	93	118	141
Graduates	1	3	2	9	3	12
<b>Total</b>	<b>34</b>	<b>51</b>	<b>87</b>	<b>102</b>	<b>121</b>	<b>153</b>
<b>Grand Total</b>	<b>85</b>		<b>189</b>		<b>274</b>	

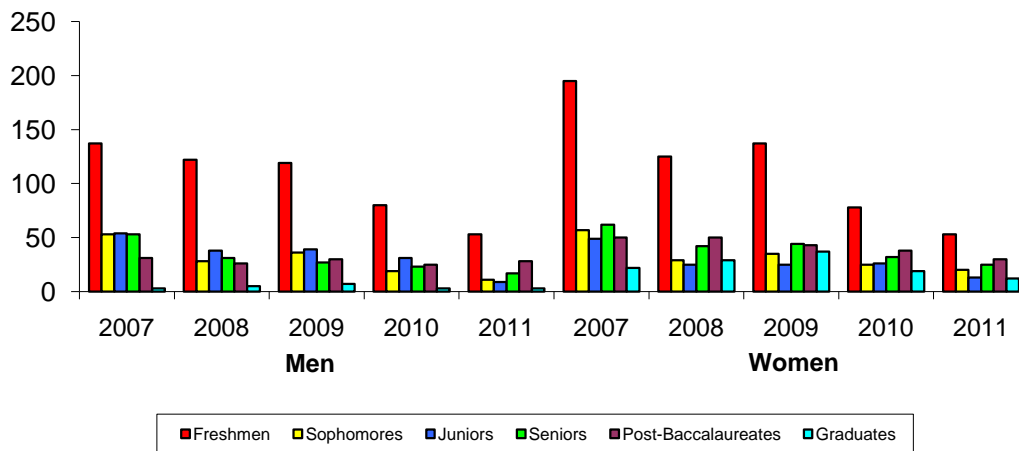
Percentage of Total Headcount	31.0%	69.0%	100.0%
----------------------------------	-------	-------	--------



## Undeclared Majors Summer Enrollment By Classification and Gender

	Men						Women					
	2007	2008	2009	2010	2011	5 Year % Diff	2007	2008	2009	2010	2011	5 Year % Diff
Freshmen	137	122	119	80	53	-61.3%	195	125	137	78	53	-72.8%
Sophomores	53	28	36	19	11	-79.2%	57	29	35	25	20	-64.9%
Juniors	54	38	39	31	9	-83.3%	49	25	25	26	13	-73.5%
Seniors	53	31	27	23	17	-67.9%	62	42	44	32	25	-59.7%
Post-Baccalaureates	31	26	30	25	28	-9.7%	50	50	43	38	30	-40.0%
Graduates	3	5	7	3	3	0.0%	22	29	37	19	12	-45.5%
<b>Total</b>	<b>331</b>	<b>250</b>	<b>258</b>	<b>181</b>	<b>121</b>	<b>-63.4%</b>	<b>435</b>	<b>300</b>	<b>321</b>	<b>218</b>	<b>153</b>	<b>-64.8%</b>
% of Semester Total	43%	45%	45%	45%	44%	2.2%	57%	55%	55%	55%	56%	-1.7%

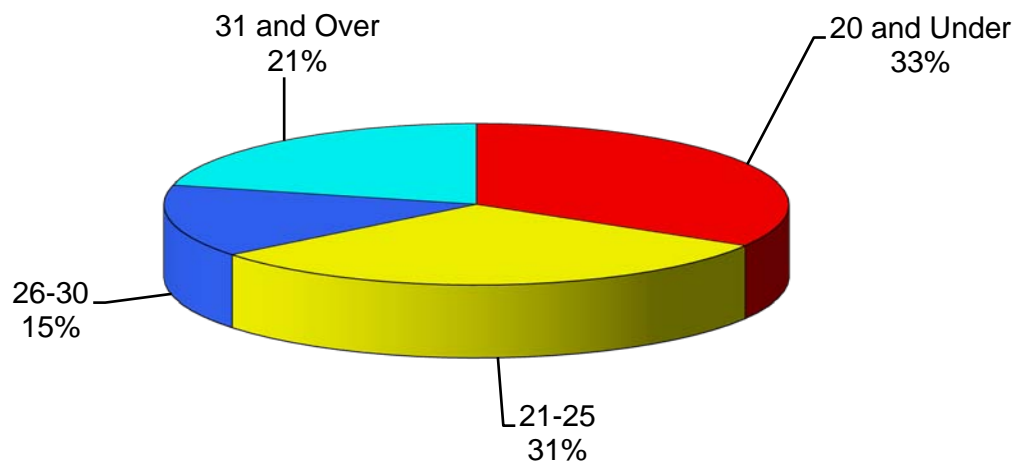
### Men/Women Comparison



## Undeclared Majors Summer Enrollment Age Distribution Analysis

	<u>2007</u>	<u>2008</u>	<u>2009</u>	<u>2010</u>	<u>2011</u>	<u>5 Year Diff</u>
20 and Under	36.8%	32.6%	31.3%	36.3%	33.6%	-3.2%
21-25	30.8%	33.0%	34.0%	25.6%	30.7%	-0.1%
26-30	10.2%	12.4%	12.8%	15.0%	14.6%	4.4%
31 and Over	22.2%	22.0%	21.9%	23.1%	21.2%	-1.0%
Average Age	26	27	27	26	26	0

### Age Distribution - Summer 2011



**Undeclared Majors  
Summer 2011 Enrollment  
Ethnicity/Race Comparison**

	<u>Men</u>	<u>Women</u>	<u>Total</u>	<u>% of Total</u>
Caucasian	67	94	161	58.8%
African-American	12	16	28	10.2%
American Indian	4	4	8	2.9%
Asian	6	11	17	6.2%
Hispanic	6	7	13	4.7%
International	3	2	5	1.8%
Pacific Islander	2	0	2	0.7%
Two or More Races	7	6	13	4.7%
Not Declared	14	13	27	9.9%
<b>Total</b>	<b>121</b>	<b>153</b>	<b>274</b>	<b>100.0%</b>



## Undeclared Majors Summer Enrollment Ethnicity/Race Comparison

	<u>2007</u>	<u>2008</u>	<u>2009</u>	<u>2010</u>	<u>2011</u>	<u>5 Year % Diff</u>
Caucasian	517	382	360	236	161	-68.9%
African-American	81	46	53	34	28	-65.4%
American Indian	38	22	28	14	8	-78.9%
Asian	38	24	35	24	17	-55.3%
Hispanic	20	16	9	15	13	-35.0%
International	10	7	8	7	5	-50.0%
Pacific Islander	2	0	1	2	2	0.0%
Two or More Races*	---	---	4	1	13	---
Not Declared	60	53	81	66	27	-55.0%
<b>Total</b>	<b>766</b>	<b>550</b>	<b>579</b>	<b>399</b>	<b>274</b>	<b>-64.2%</b>

\* Category added to meet federal methodology.

### Ethnicity/Race Comparison

