

Appendix

In this Appendix, we provide flow-chart depictions of the actions of the network agents. We divide the actions into three types: buyer's action, suppliers' action and raw supplier's actions. Note "suppliers" here refer to all non-raw material suppliers and "raw suppliers" here refer to all raw material suppliers.

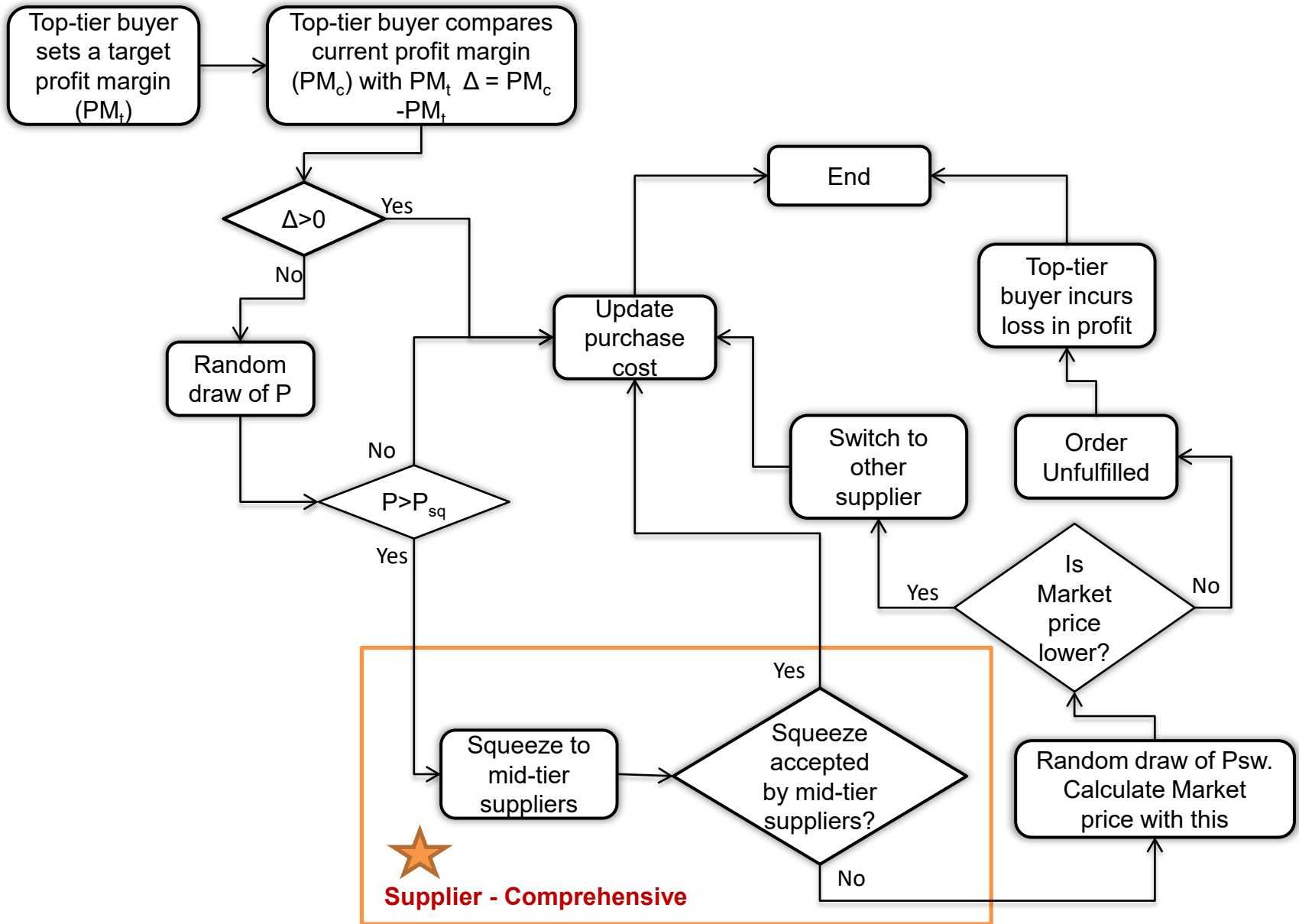
In order to improve readability, we remove the details associated with "Supplier-Comprehensive" step from the "Buyer's Logic" flow chart and provide them toward the end in a separate process flow. Similarly, we remove the details associated with "Raw Supplier Comprehensive" and provide them at the end in a separate process flow.

Below we provide a directory of the flowcharts provided in this Appendix. Note that the word "Only" at the end of the model name is to denote a somewhat independent path. However, these independent path models are not 100% orthogonal. For example, in every independent path model, there is an element of acceptance or rejection and as such they are not truly independent from the acceptance or rejection path model.

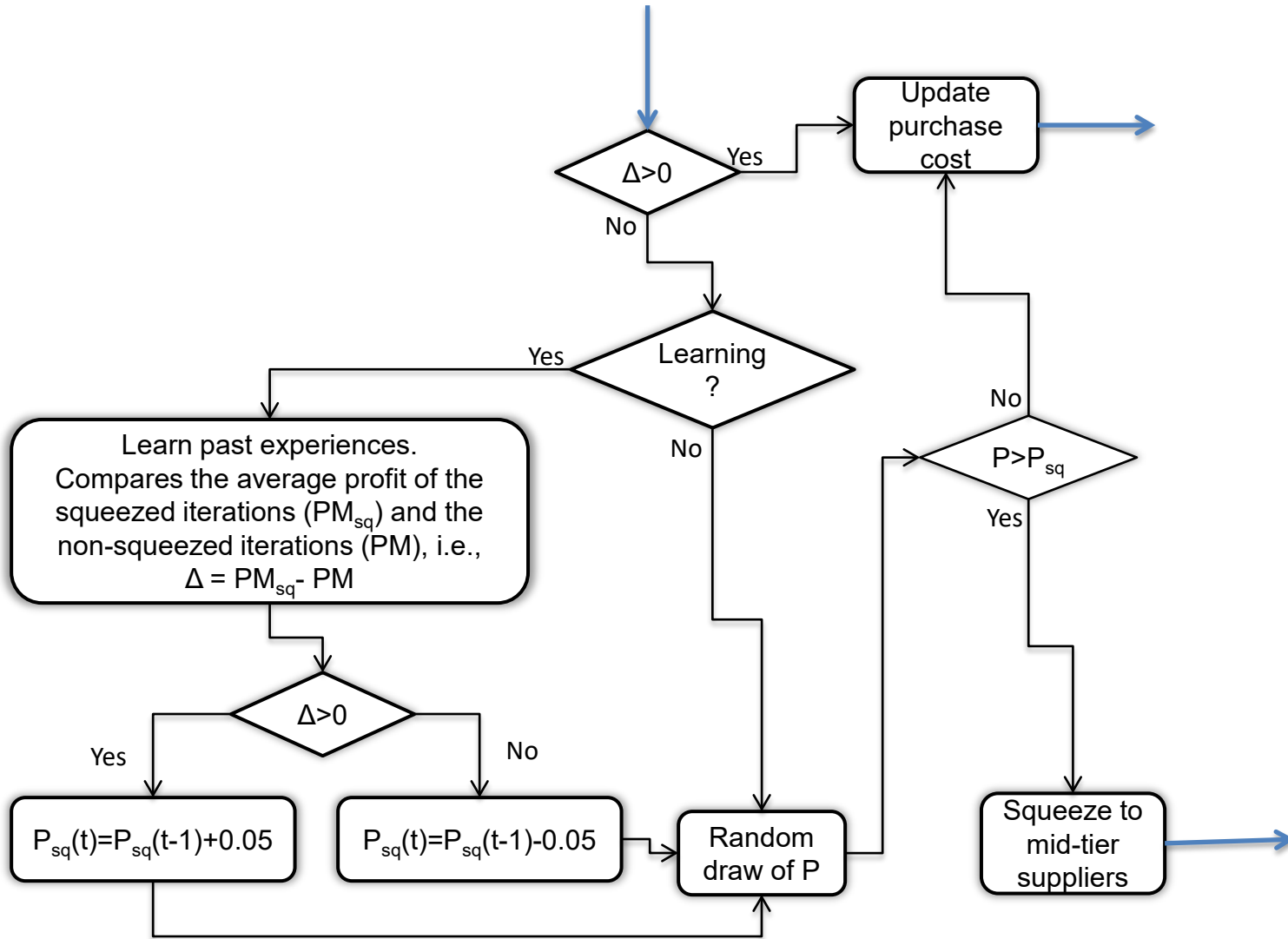
- Buyer's Logic
- Learning Logic
- Supplier-Cost Reduction Only
- Supplier-Switching Only
- Supplier-Rejection Only
- Supplier-Acceptance Only
- Raw Supplier-Cost Reduction Only
- Raw Supplier-Switching Only*
- Raw Supplier-Rejection Only
- Raw Supplier-Acceptance Only
- Supplier-Comprehensive
- Raw Supplier-Comprehensive

*Note that although raw material suppliers do not have the option to switch suppliers themselves, they are subject to interactions with downstream buyer when switching happens, which indirectly impacts downstream buyers. Thus, we include this interaction into the flowchart.

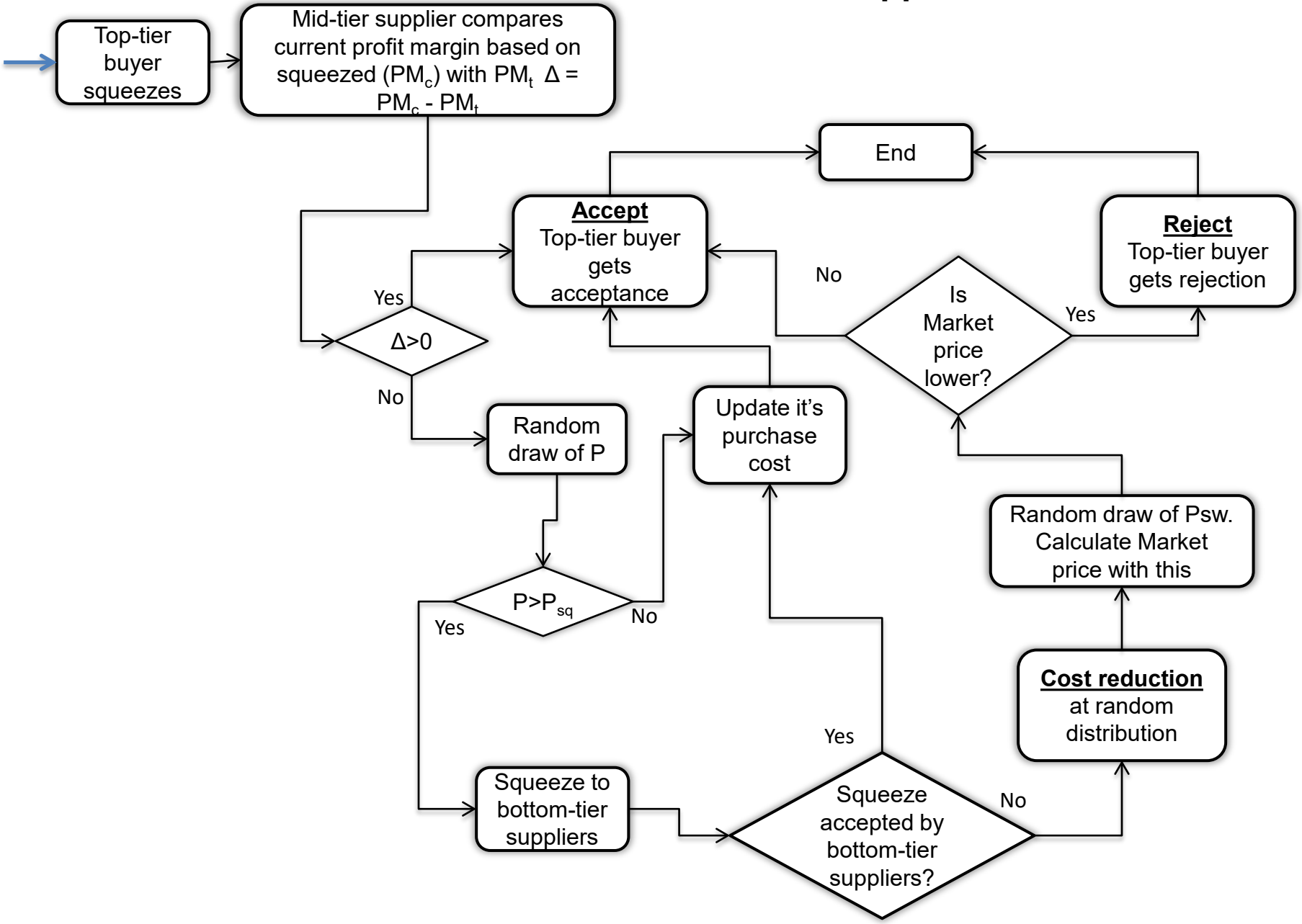
Buyer's Logic



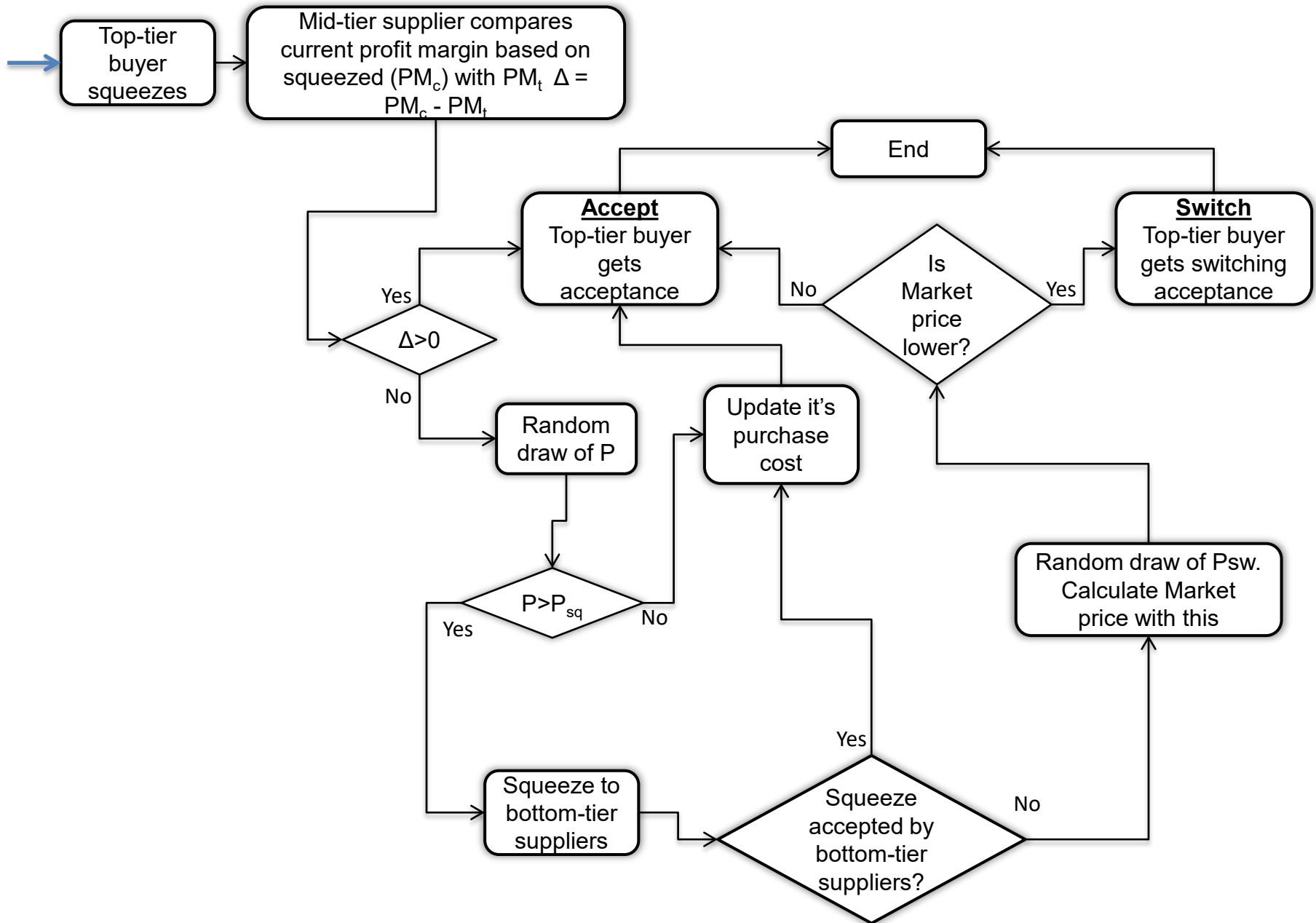
Learning Logic



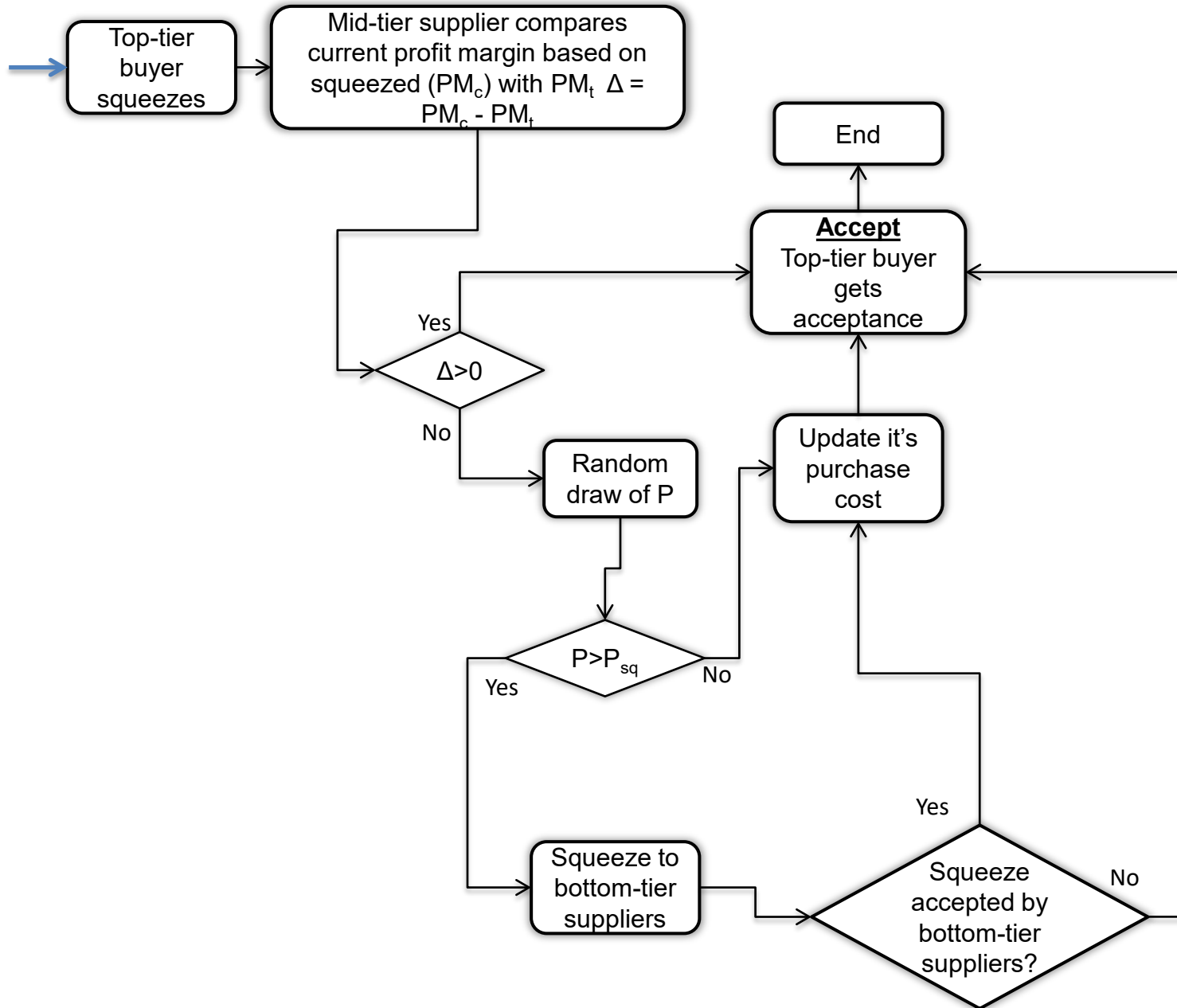
Supplier - Cost Reduction Only



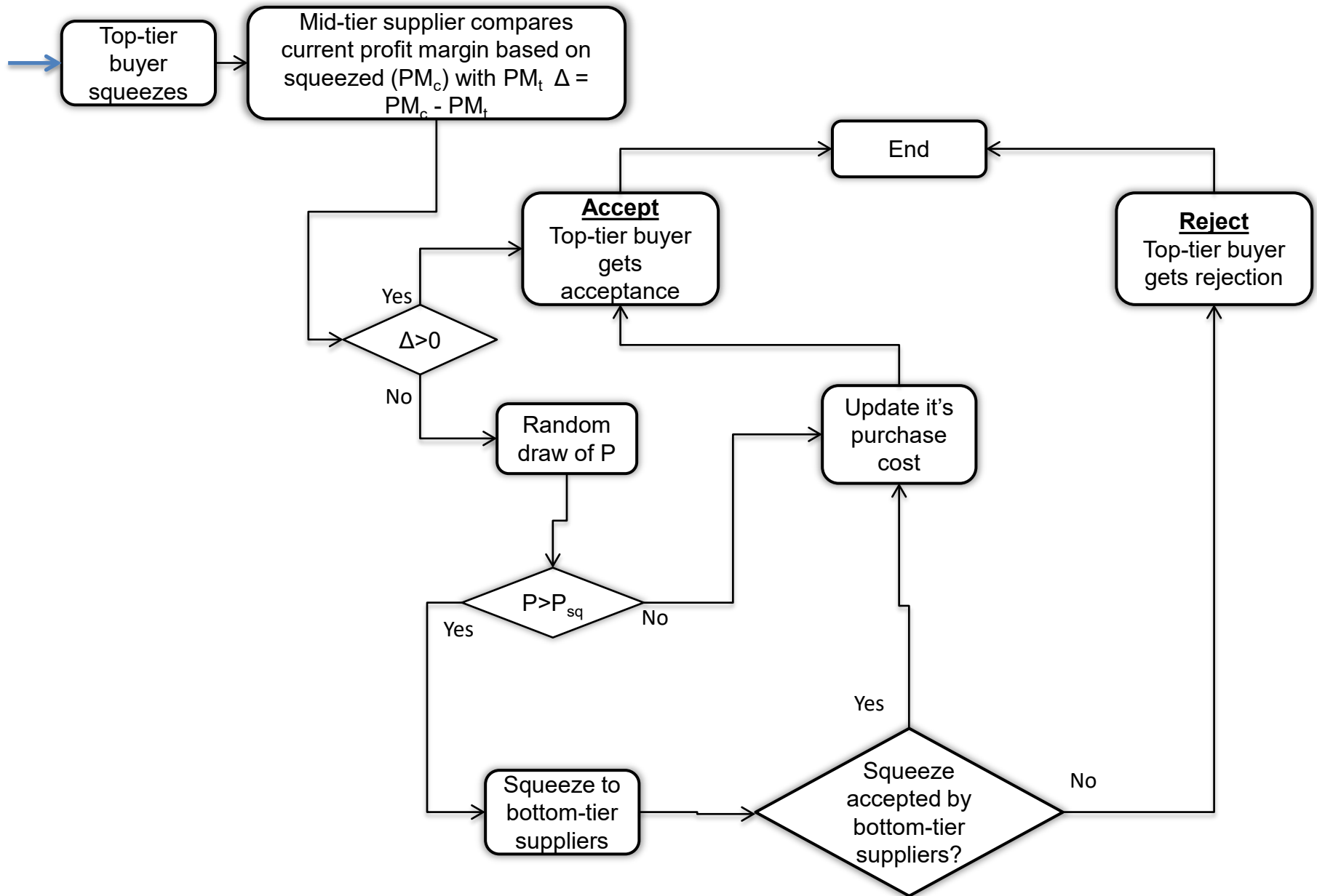
Supplier - Switching Only



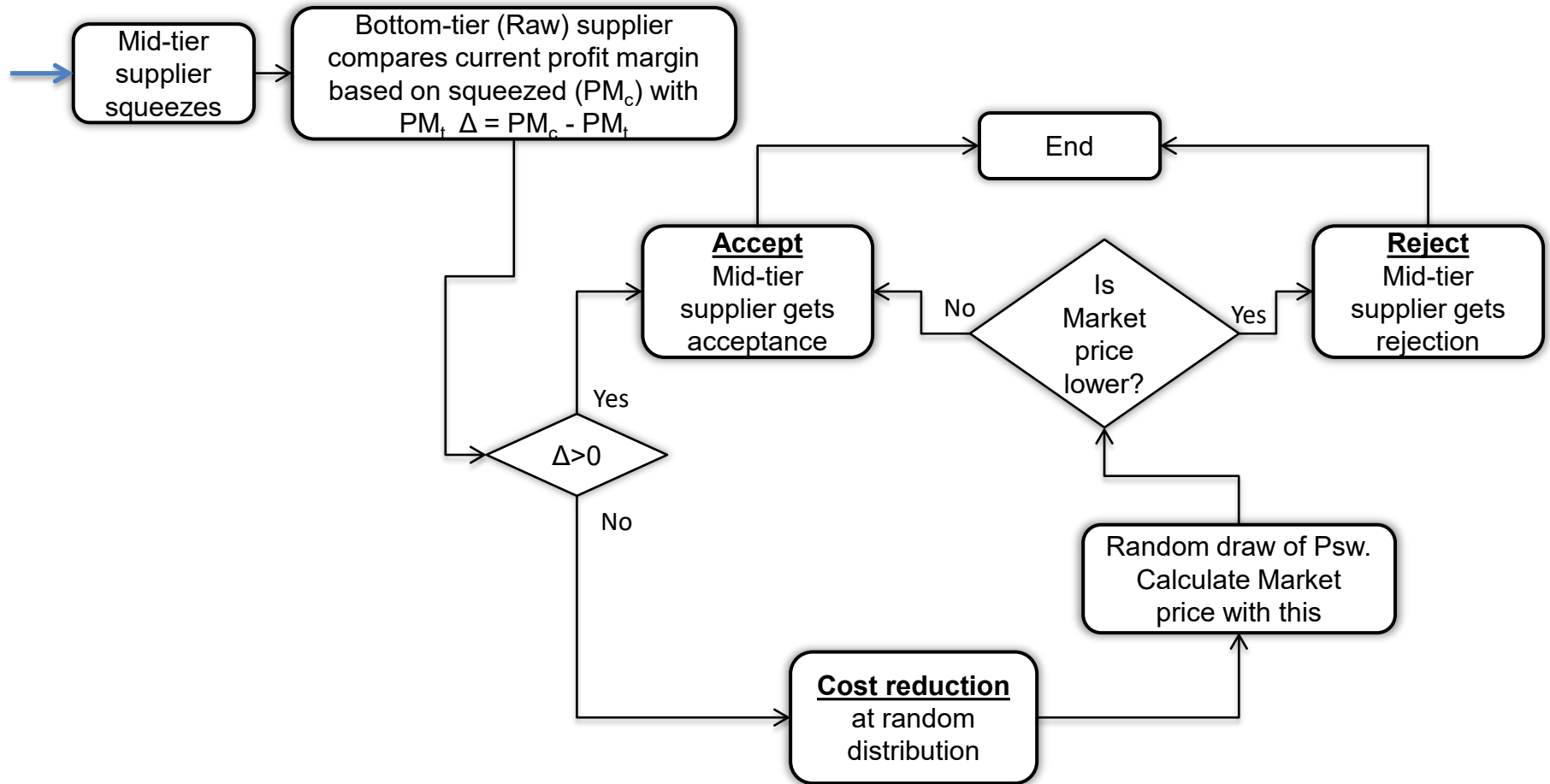
Supplier - Accept Only



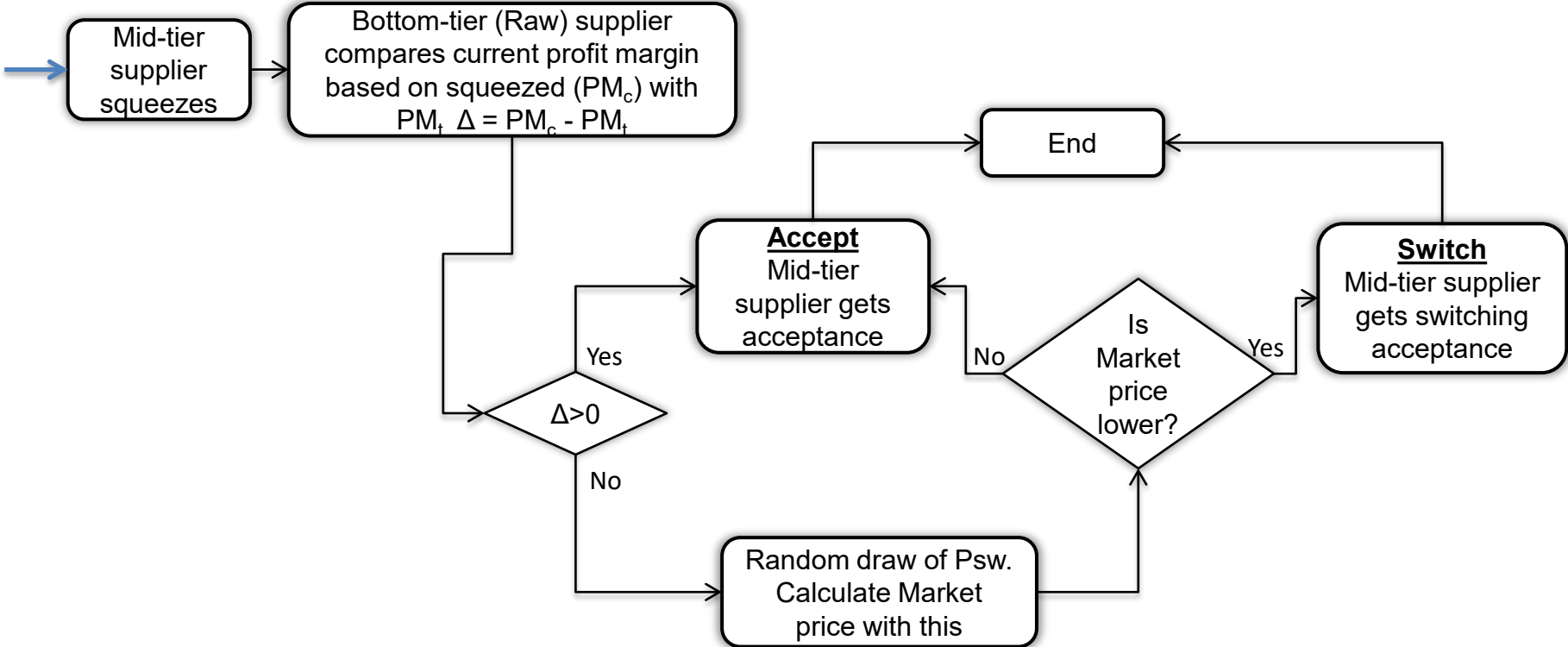
Supplier - Rejection Only



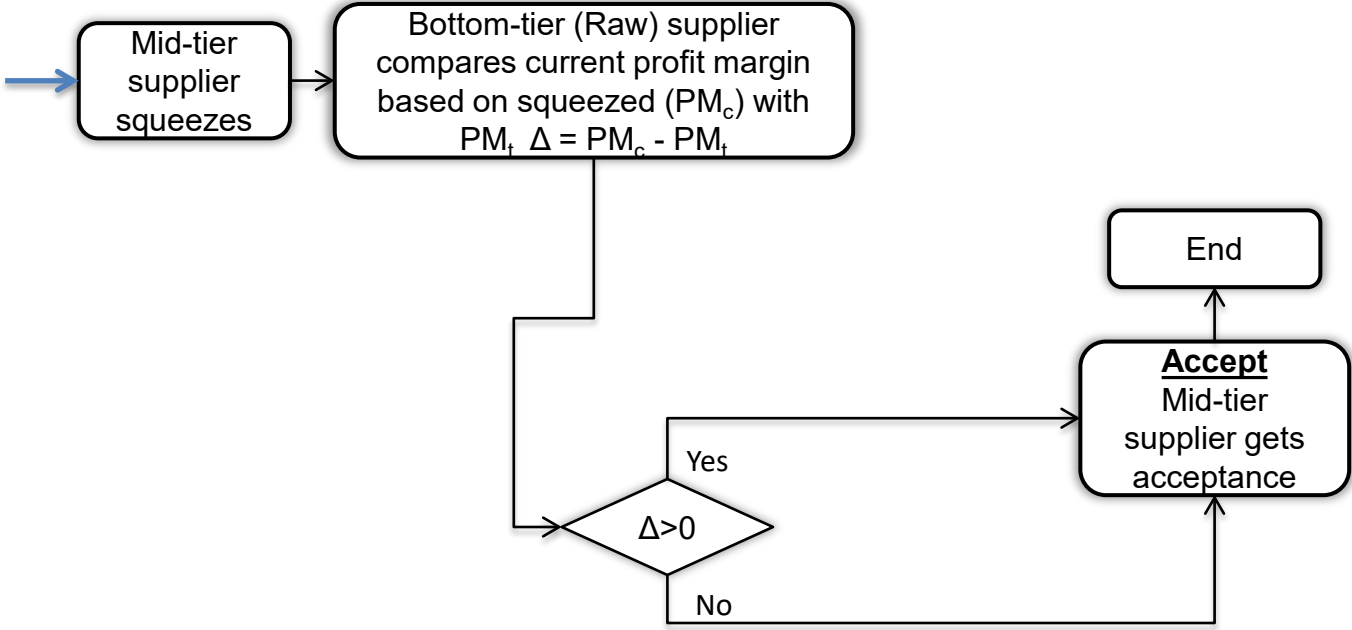
Raw Supplier - Cost Reduction Only



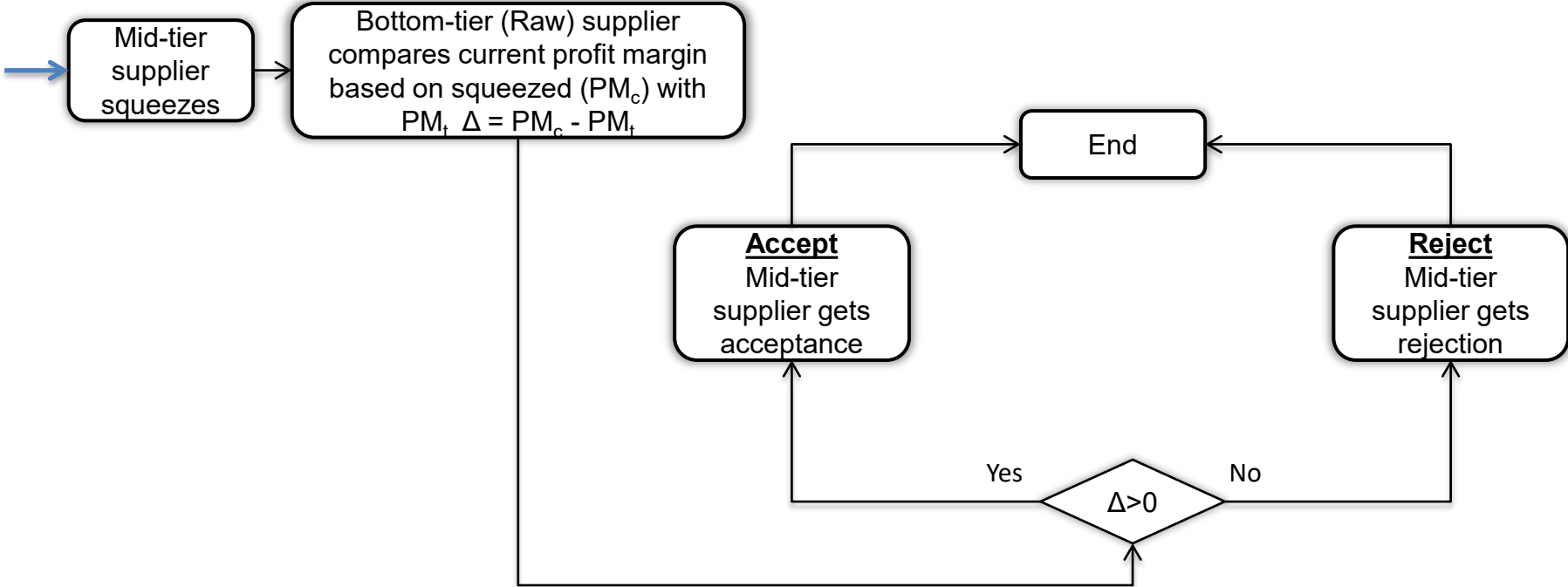
Raw Supplier - Switching Only



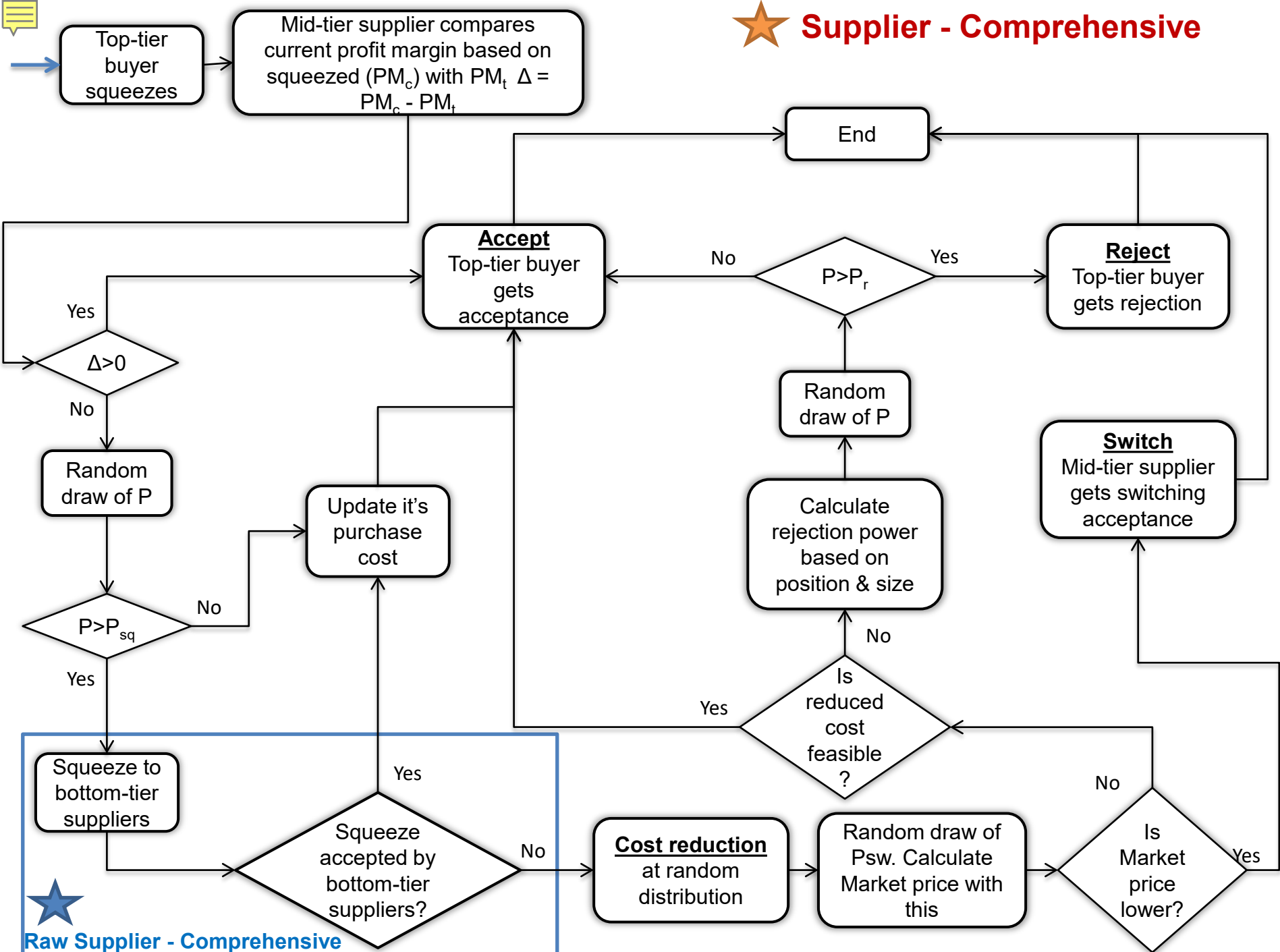
Raw Supplier – Accept Only



Raw Supplier – Rejection Only



★ **Supplier - Comprehensive**



★ **Raw Supplier - Comprehensive**

★ Raw Supplier - Comprehensive

