



Cotton Comments

OSU Southwest Oklahoma Research and Extension
Center Altus, OK

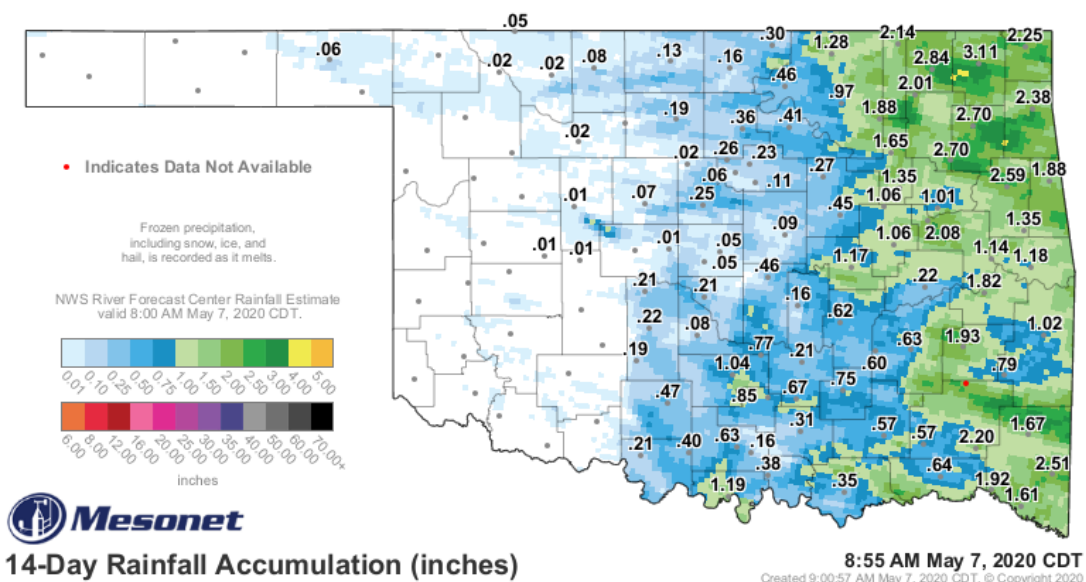


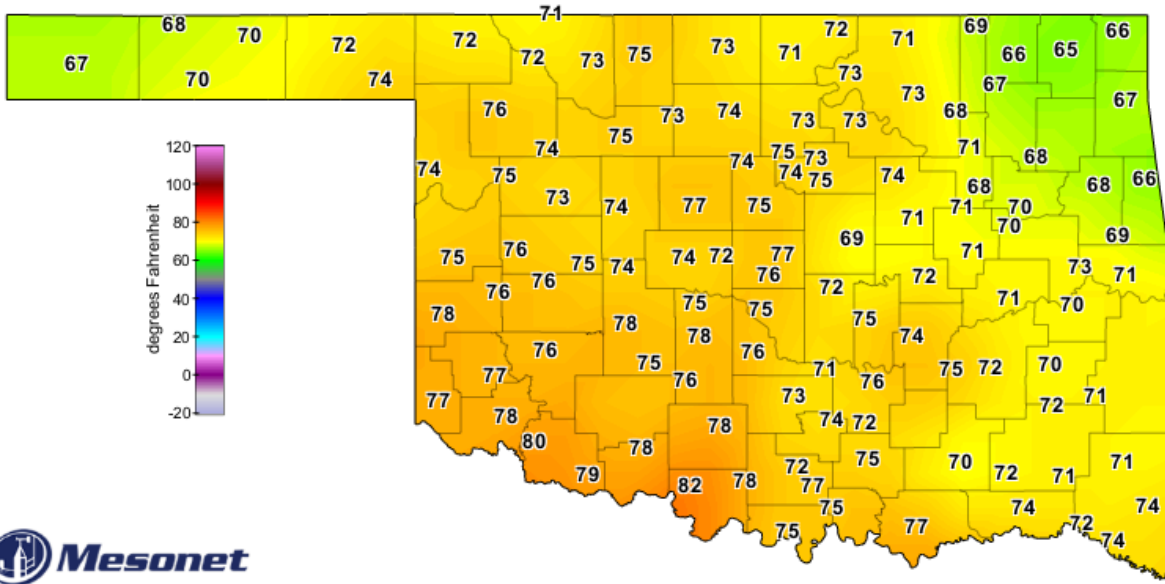
May 7, 2020 Volume 10 No. 3

Current Situation

Cotton planting has started across the state with marginal conditions at best. This ranges from too dry soil conditions to cold soil temperature. Please refer by clicking here [Cotton Comments Volume 10 Special edition](#) for more details. The soil temperature have dramatically improved but with an unfavorable forecast. The soil moisture is extremely inadequate but with a more flavorful forecast. The potential for a planting failure has to be a concern in the immediate future.

Once again for producers wanting to plant cotton into “disastered” out wheat soil moisture is critical. At this time I would like to thank Leon Fischer with COOP Services Inc. Lawton, Chattanooga, and Grandfield. First for being one of the first to discover the freeze damage in this year wheat crop and how extensive it was and second for all the knowledge and education he has provided to me about freeze damage in wheat. I know most of you are surprised that anyone can teach me anything. Thank you Leon!!





3-day Average 4-inch Bare Soil Temperature (°F)

as of 12:00 AM May 7, 2020
Created 6:55:05 AM May 7, 2020 CDT. © Copyright 2020

Next Seven Days

Weather Forecast Office
Norman, OK
Issued May 7, 2020 3:24 AM CDT

Forecast

Thu

up to 90%
ELEVATED

Fri

LOW

Sat

LOW

Sun

20%
LOW

Mon

up to 60%
LOW

Tue

20-50%
LOW

Wed

20%
LOW

Impacts

Severe Storms Possible

	Thu	Fri	Sat	Sun	Mon	Tue	Wed
PM Highs	81 WWR 77 OKC 87 SPS 80 DUA	72 PNC 64 OKC 68 SPS 68 DUA	68 PNC 68 OKC 72 SPS 68 DUA	67 WWR 69 OKC 75 SPS 72 DUA	61 PNC 67 OKC 79 SPS 74 DUA	65 PNC 69 OKC 81 SPS 77 DUA	78 PNC 80 OKC 86 SPS 82 DUA
AM Lows	53 WWR 53 OKC 55 SPS 52 DUA	46 WWR 52 OKC 58 SPS 59 DUA	39 PNC 41 OKC 43 SPS 44 DUA	45 WWR 47 OKC 49 SPS 47 DUA	46 PNC 48 OKC 51 SPS 49 DUA	48 PNC 53 OKC 60 SPS 56 DUA	53 PNC 58 OKC 63 SPS 62 DUA

@NWSNorman

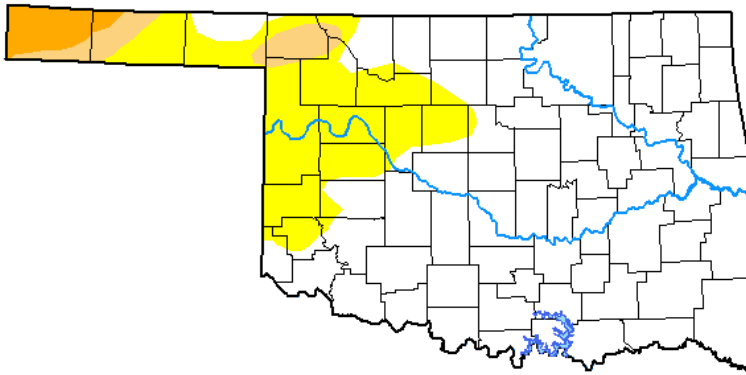
weather.gov/norman

U.S. Drought Monitor Oklahoma

May 5, 2020
(Released Thursday, May 7, 2020)
Valid 8 a.m. EDT

Drought Conditions (Percent Area)

	None	D0-D4	D1-D4	D2-D4	D3-D4	D4
Current	76.46	23.54	5.44	2.40	0.00	0.00
Last Week <i>04-28-2020</i>	85.96	14.04	3.94	2.27	0.00	0.00
3 Months Ago <i>02-04-2020</i>	83.33	16.67	7.51	0.85	0.00	0.00
Start of Calendar Year <i>12-31-2019</i>	76.45	23.55	10.47	3.64	0.00	0.00
Start of Water Year <i>10-01-2019</i>	71.94	28.06	11.08	1.01	0.00	0.00
One Year Ago <i>05-07-2019</i>	98.28	1.72	0.00	0.00	0.00	0.00



Intensity:

- None
- D0 Abnormally Dry
- D1 Moderate Drought
- D2 Severe Drought
- D3 Extreme Drought
- D4 Exceptional Drought

The Drought Monitor focuses on broad-scale conditions. Local conditions may vary. For more information on the Drought Monitor, go to <https://droughtmonitor.unl.edu/About.aspx>

Author:

Brad Pugh
CPC/NOAA



droughtmonitor.unl.edu

Training for Paraquat Applicators

Todd Baughman
Weed Science Professor

Misha Manuchehri
Weed Science Extension Specialist

Kevin Shelton
Pesticide
Coordinator

“In accordance with EPA’s 2016 Paraquat Dichloride Human Health Mitigation Decision, applicators are required to take an EPA-approved paraquat training program every 3 years in order to mix, load, apply, or handle paraquat.”

What Does this Mean?

All certified applicators who intend to apply paraquat (as mandated by the U.S. Environmental Protection Agency – EPA) must complete the paraquat training requirement.

Where and How Do I Take the Training?

Every certified applicator needs to go the eXtension link:
How To Safely Use and Handle Paraquat-Containing Products
<https://campus.extension.org/enrol/index.php?id=1660>

You will need to log in by clicking on the ‘Log in’ button
<https://campus.extension.org/login/index.php> at the top, right side of the page. An email will then be sent to your Google or Microsoft account. Confirm the account by clicking on the link in the email.

You can log in under your Google or Microsoft account.

What if I do not have a Google or Microsoft account?

You will need to create an account by clicking on the ‘Create New Account’ button at the bottom of the page <https://campus.extension.org/login/signup.php>
You will then need to create a self-selected username and password and fill out the other required information.

After your registration has been confirmed, click on the ‘My Courses’ button and select ‘Paraquat’.

You will then be able to participate in the ‘How To Safely Use and Handle Paraquat-Containing Products’ course <https://campus.extension.org/enrol/index.php?id=1660>.

What's Next?

You can complete the online course by clicking on the 'Click to Take the Online Course'. This will then take you to the online course where you will click the 'Enter' button.

Finally, this will open a new window with the actual course. After watching each of the modules of the training course, you will click on the 'Course Homepage' button. This will return you to the 'How To Safely Use and Handle Paraquat-Containing Products' page. At the bottom, left side of the page, you will see 'Take The Final Assessment'. Click on the 'Final Assessment' link. The link will take you to the final quiz page. You must complete the 15-question quiz and make a 100% on the quiz before you will receive your Certificate of Completion. Click on the 'Certificate of Completion' link at the bottom of the page and then select 'Get Certificate'. You now can print a copy of your certificate for your records.

How Long is the Certificate/Training Good For?

The certificate expires 3 years from the date of completion.

Can Anyone Purchase Paraquat?

No, paraquat is a restricted use pesticide (RUP) and can only be purchased by certified or private applicators.

Oklahoma Boll Weevil Eradication Organization

New web page address click here: [OBWEO](#)

Brenda Osborne, Director of the Oklahoma Boll Weevil Organization, based at Altus, provided the information below. Eradication of the boll weevil across most of the U.S. Cotton Belt, and in the state has been very successful and is a major contributing factor to the continued profitability of cotton production. It has been a long, difficult, and expensive task to rid our state and most of the Cotton Belt of this invasive species that for such a long time negatively impacted our production. Since 1998 the producers of Oklahoma has spent over **thirty seven million** dollars to eradicate and provide a maintenance program.

Cotton acres for the past five years

Year	Acres ¹
2015	216,678
2016	299,302
2017	568,434
2018	756,397
2019	603,014

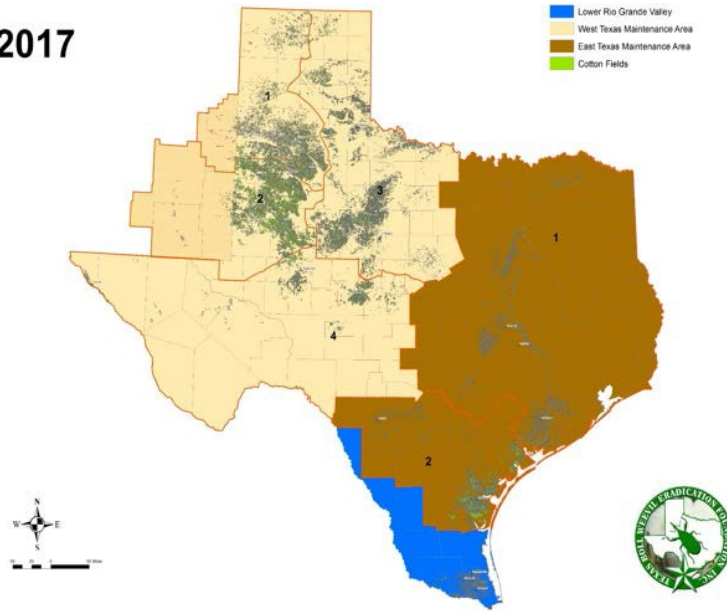
¹ Oklahoma Boll Weevil Eradication Organization

OBWEO is preparing for the upcoming 2020 cotton season. It is our responsibility to ensure the continued success of this program. If you have been growing cotton for the past 3-5 years, we know where those fields are located. ***However, if you are a new producer or have not grown cotton in several years, we need you to provide the legal descriptions of these new cotton fields.***

There is a Boll Weevil Assessment for harvested cotton acres. The current assessment is \$2.50 per harvested acre. This assessment is reviewed annually. The trapping density this year is one trap per 640 acres. In areas where planted cotton acreage density is high, not all fields will actually have a trap near it. In other areas that are more isolated, each field will need a trap.

There is still a difficult fight with this insect pest in south Texas, and we all need to do our part in keeping this pest from resurfacing in our state. Cotton harvesting equipment entering Oklahoma from two eradication areas in Texas has to be certified as boll weevil free prior to movement into our state. Please contact TBWEF before departure from these two areas. This will allow TBWEF to inspect the equipment. A USDA-APHIS phytosanitary certificate is issued and is required before equipment can be transported from these areas. These ONLY include the Lower Rio Grande Valley Eradication Zone (blue area on the map below) or the East Texas Maintenance Area (brown area on the map below). This is critical to meet USDA- APHIS requirements and prevent the re-infestation of boll weevils into eradicated areas. It is illegal to move non-certified cotton harvesting equipment from these areas into the state of Oklahoma.

2017



Texas Boll Weevil Eradication Foundation: 325-672-2800
After Hours and Weekends: 325-668-7361

Contact John Lamb at the Frederick office at 580-335-7760 or cell 580-305-1930 for the following counties: Tillman, Cotton, Comanche, Atoka, Bryan, and Stephens.

Contact Brenda Osborne at the Altus office at 580-477-4287 or cell 580-471-79632 for all other counties.

The Cotton Comments Newsletter is maintained by Jerry Goodson, Extension Assistant. If you would like to receive this newsletter via email, send a request to:

jerry.goodson@okstate.edu

Jerry Goodson
Extension Assistant
16721 US Hwy. 283
Altus, Oklahoma
(580) 482-8880 office
(580) 482-0208 fax

www.cotton.okstate.edu

www.ntokcotton.org

Oklahoma State University in compliance with Title VI and VII of the Civil Rights Act of 1964, Executive Order 11246 as amended, Title IX of the Education Amendments of 1972, Americans with Disabilities Act of 1990, and other federal laws and regulations does not discriminate on the basis of race, color, national origin, sex, age, religion, disability, or status as a veteran in any of its policies, practices, or procedures. This includes but is not limited to admissions, employment, financial aid, and educational services.