



# Cotton Comments

OSU Southwest Oklahoma Research and Extension Center  
Altus, OK

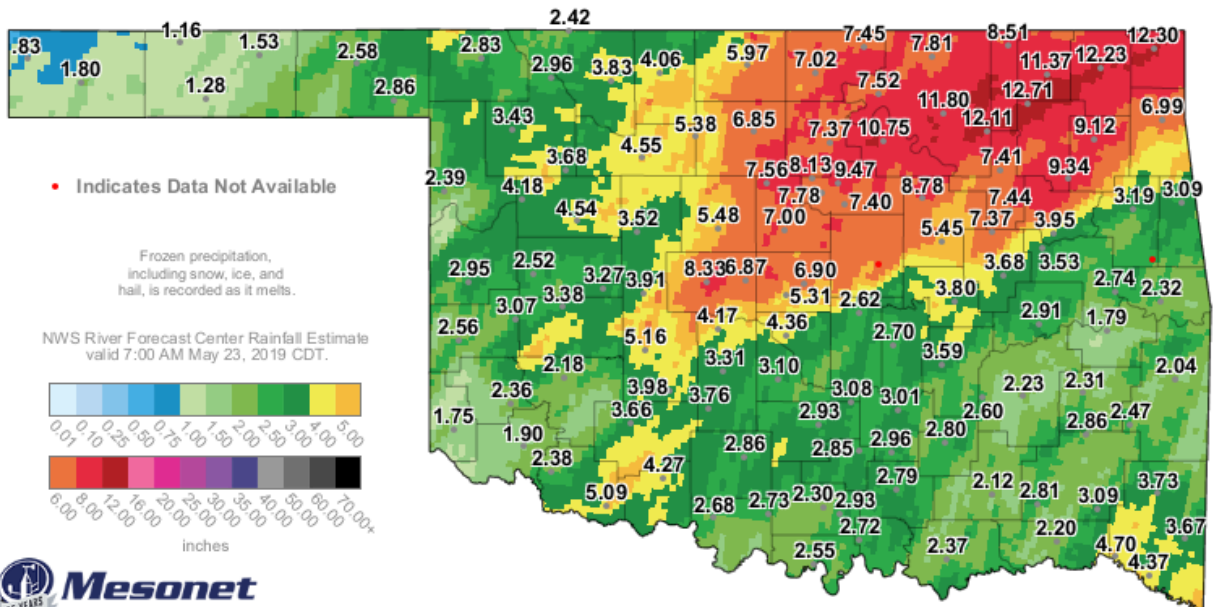


May 23, 2019

Volume 9 No. 4

## 2019 Current Situation

The 2019 cotton season is becoming a real challenge! Rain fall amounts are unbelievable with severe flooding occurring in some areas. More rain is in the forecast but hopefully no more flooding rains. Hopefully the extreme weather is past us and conditions will improve. Any window of opportunity should be fully utilize especially in irrigated fields. **Every field needs to be evaluate at time of planting to ensure that good emergence occurs.** This is critical because of seed availability and the shorter planting window replanting may not be an option.



14-Day Rainfall Accumulation (inches)

8:00 AM May 23, 2019 CDT

Created 8:05:54 AM May 23, 2019 CDT. © Copyright 2019

## Crop Conditions

Cotton planting has begun. The earliest I have been told was May 13 in Jackson County. Also cotton planting has started in the Northwest part of the state. Excellent emergence has been observed with one field “popping up” after three days. This is critical time for Thrips control, please refer back to [Cotton Comments Volume 9 edition 2 April 25, 2019](#) for Thrips control issues. Also armyworms and cutworms have been observed in ground cover that was being planted into. Hopefully the pest will be mature out or migrate elsewhere before emergence. The field will be scouting again in four or five days to see if this occurs. No additional pest have been reported.

***After emergence scouting of the field must start and continue on a weekly basis until termination of the crop.***



Emily Landoll, Assistant Superintendent planting in “plenty of moisture” on the Southwest Research and Extension Center Altus, Oklahoma.

## 2019 Dicamba Training

Applicators planning to use specific dicamba herbicides labelled for the Roundup Ready Xtend Crop System™ for soybeans and cotton must complete U.S. Department of Agriculture-approved dicamba training before spraying these products this year.

“Whether you’re a certified applicator or driving the application equipment you have to be trained,” said Todd Baughman, Oklahoma State University Cooperative Extension summer crop weed specialist. “Even if you went through training last year, you’re still required to go through the Oklahoma Department of Agriculture, Food and Forestry approved training this year.”

Only the ODAFF, Extension and the three major manufacturers – Monsanto, DuPont and BASF – are authorized to provide the training. To be certified please contact your local extension office.

## Oklahoma Boll Weevil Eradication Organization

Brenda Osborne, Director of the Oklahoma Boll Weevil Organization, based at Altus, provided the information below. Eradication of the boll weevil across most of the U.S. Cotton Belt, and in the state has been very successful and is a major contributing factor to the continued profitability of cotton production. It has been a long, difficult, and expensive task to rid our state and most of the Cotton Belt of this invasive species that for such a long time negatively impacted our production. Since 1998 the producers of Oklahoma has spent **\$37,218,599** to eradicate and provide a maintenance program.

There is still a difficult fight with this insect pest in south Texas, and we all need to do our part in keeping this pest from resurfacing in our state.

### Cotton acres for past five years

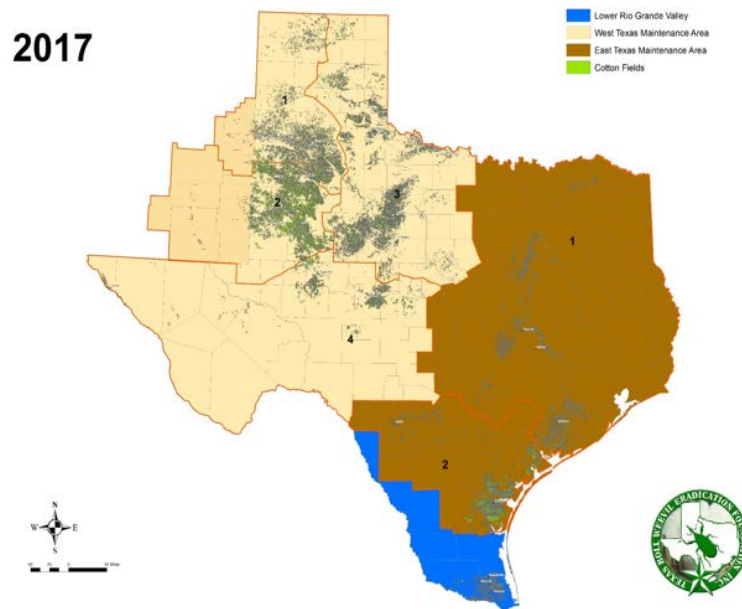
<u>Year</u>	<u>Acres<sup>1</sup></u>
2014	237,523
2015	216,678
2016	299,302
2017	568,434
2018	756,397

<sup>1</sup> Oklahoma Boll Weevil Eradication Organization

OBWEO is preparing for the upcoming 2019 cotton season. It is our responsibility to ensure the continued success of this program. With all the talk of a significant increase in cotton acres, there are some important issues with respect to OBWEO that you need to be aware of. If you have been growing cotton for the past 3-5 years, we know where those fields are located. However, if you are a new producer or have not grown cotton in several years, we need you to provide the legal descriptions of these new cotton fields.

There is a Boll Weevil Assessment for harvested cotton acres. The current assessment is \$2.50 per harvested acre. This assessment is reviewed annually. The trapping density this year is one trap per 640 acres. In areas where planted cotton acreage density is high, not all fields will actually have a trap near it. In other areas that are more isolated, each field will need a trap.

Cotton harvesting equipment entering Oklahoma from two eradication areas in Texas has to be certified as boll weevil free prior to movement into our state. Please contact the equipment departure from these two areas. This will allow TBWEF to inspect the equipment. A USDA-APHIS phytosanitary certificate is issued and is required before equipment can be transported from these areas. These ONLY include the Lower Rio Grande Valley Eradication Zone (blue area on the map below) or the East Texas Maintenance Area (brown area on the map below). This is critical to meet USDA-APHIS requirements and prevent the re-infestation of boll weevils into eradicated areas. It is illegal to move non-certified cotton harvesting equipment from these areas into the state of Oklahoma.



Texas Boll Weevil Eradication Foundation: 325-672-2800  
After Hours and Weekends: 325-668-7361

Contact John Lamb at the Frederick office at 580-335-7760 or cell 580-305-1930 for the following counties: Tillman, Cotton, Comanche, Atoka, Bryan, and Stephens.

Contact Brenda Osborne at the Altus office at 580-477-4287 or cell 580-471-79632 for all other counties.

Harvey Schroeder Executive Director Oklahoma Cotton Council cotton quote of the week.

*"If you do what you've always done, you'll get what you've always gotten."*

- Tony Robbins

The Cotton Comments Newsletter is maintained by Jerry Goodson, Extension Assistant. If you would like to receive this newsletter via email, send a request to:

[jerry.goodson@okstate.edu](mailto:jerry.goodson@okstate.edu)

Jerry Goodson  
Extension Assistant  
16721 US Hwy. 283  
Altus, Oklahoma  
(580) 482-8880 office  
(580) 482-0208 fax

[www.cotton.okstate.edu](http://www.cotton.okstate.edu)

[www.ntokcotton.org](http://www.ntokcotton.org)

Oklahoma State University in compliance with Title VI and VII of the Civil Rights Act of 1964, Executive Order 11246 as amended, Title IX of the Education Amendments of 1972, Americans with Disabilities Act of 1990, and other federal laws and regulations does not discriminate on the basis of race, color, national origin, sex, age, religion, disability, or status as a veteran in any of its policies, practices, or procedures. This includes but is not limited to admissions, employment, financial aid, and educational services.