



US010799576B2

(12) **United States Patent**
Oomens

(10) **Patent No.:** **US 10,799,576 B2**
(45) **Date of Patent:** **Oct. 13, 2020**

(54) **RSV VACCINES AND METHODS OF PRODUCTION AND USE THEREOF**

(71) Applicant: **The Board of Regents for Oklahoma State University**, Stillwater, OK (US)

(72) Inventor: **Antonius G. P. Oomens**, Stillwater, OK (US)

(73) Assignee: **The Board of Regents for Oklahoma State University**, Stillwater, OK (US)

(*) Notice: Subject to any disclaimer, the term of this patent is extended or adjusted under 35 U.S.C. 154(b) by 0 days.

(21) Appl. No.: **16/257,738**

(22) Filed: **Jan. 25, 2019**

(65) **Prior Publication Data**

US 2019/0224300 A1 Jul. 25, 2019

Related U.S. Application Data

(60) Provisional application No. 62/621,685, filed on Jan. 25, 2018.

(51) **Int. Cl.**

C07K 14/195	(2006.01)
C07K 14/22	(2006.01)
C12N 15/867	(2006.01)
C12N 5/10	(2006.01)
G01N 33/53	(2006.01)
A61K 39/12	(2006.01)
A61K 39/39	(2006.01)
C12N 7/00	(2006.01)
A61P 31/12	(2006.01)
A61P 31/14	(2006.01)
A61K 39/00	(2006.01)

(52) **U.S. Cl.**

CPC **A61K 39/12** (2013.01); **A61K 39/39** (2013.01); **A61P 31/12** (2018.01); **A61P 31/14** (2018.01); **C12N 7/00** (2013.01); **A61K 2039/5254** (2013.01); **A61K 2039/575** (2013.01); **C12N 2710/14052** (2013.01); **C12N 2760/18534** (2013.01); **C12N 2760/18562** (2013.01); **C12N 2760/18571** (2013.01)

(58) **Field of Classification Search**

CPC **C07K 14/22**; **C12N 15/86**; **C12N 2740/16043**; **C12N 2740/16052**

See application file for complete search history.

(56) **References Cited**

U.S. PATENT DOCUMENTS

7,588,770 B2* 9/2009 Oomens **A61K 39/155**
424/184.1

* cited by examiner

Primary Examiner — Barry A Chestnut

(74) *Attorney, Agent, or Firm* — Dunlap Codding, P.C.

(57) **ABSTRACT**

Recombinant, live, attenuated viruses of the Pneumoviridae family are disclosed that include a baculovirus GP64 envelope glycoprotein or variant or fragment thereof and a respiratory syncytial virus (RSV) F protein variant or fragment thereof. Also disclosed are polynucleotides encoding the virus as well as pharmaceutical compositions and vaccines containing the virus. In addition, methods of producing and using each of the above compositions are also disclosed.

18 Claims, 12 Drawing Sheets

Specification includes a Sequence Listing.

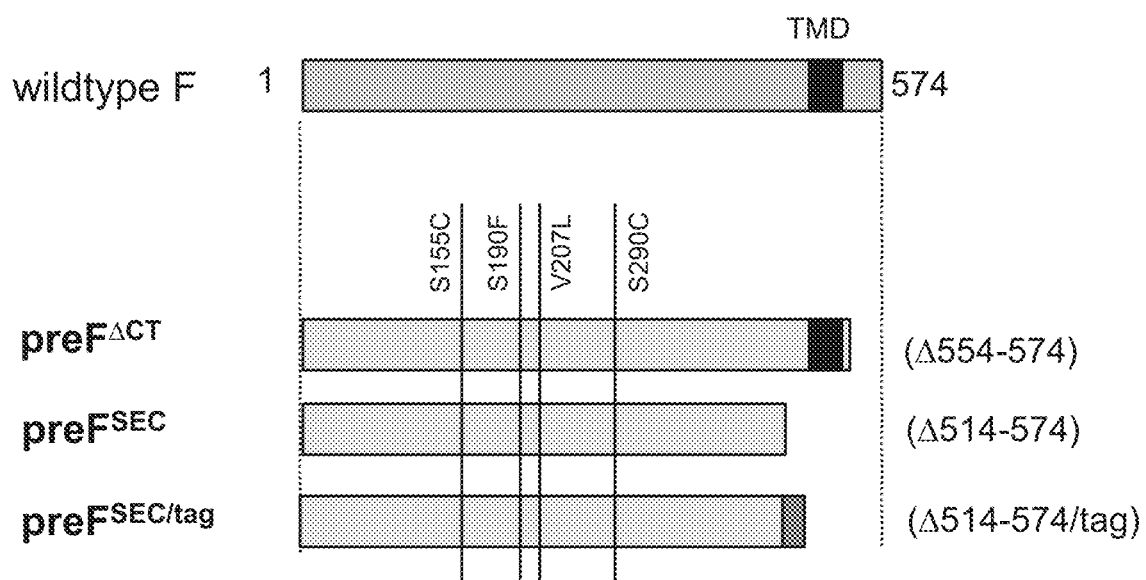
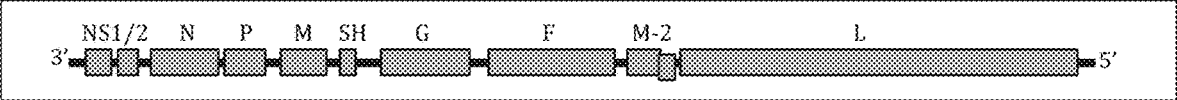
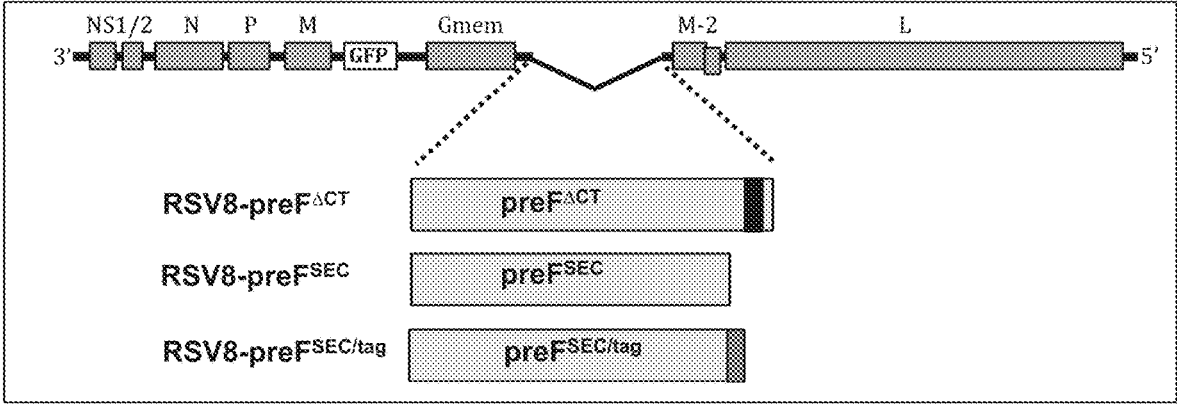


FIG. 1

A.



B.



C.

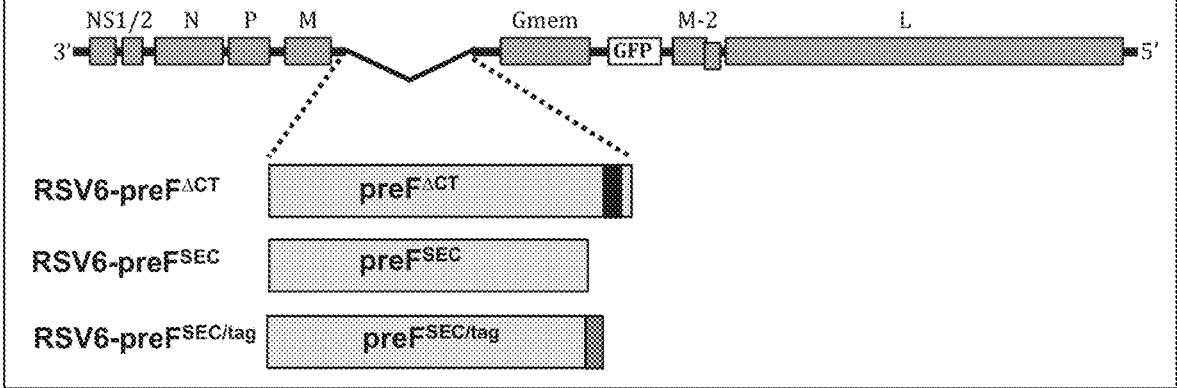


FIG. 2

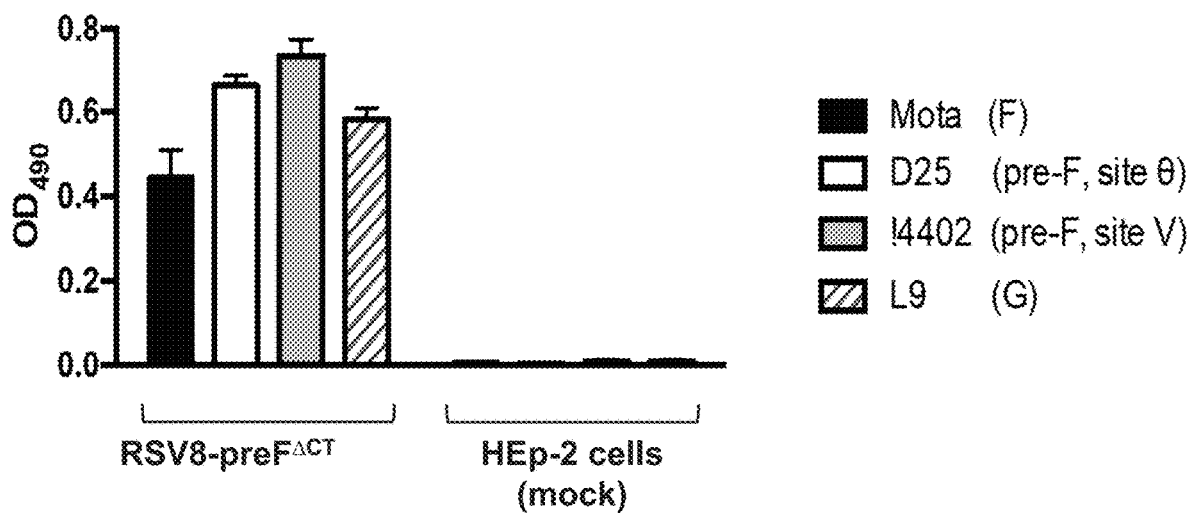


FIG. 3

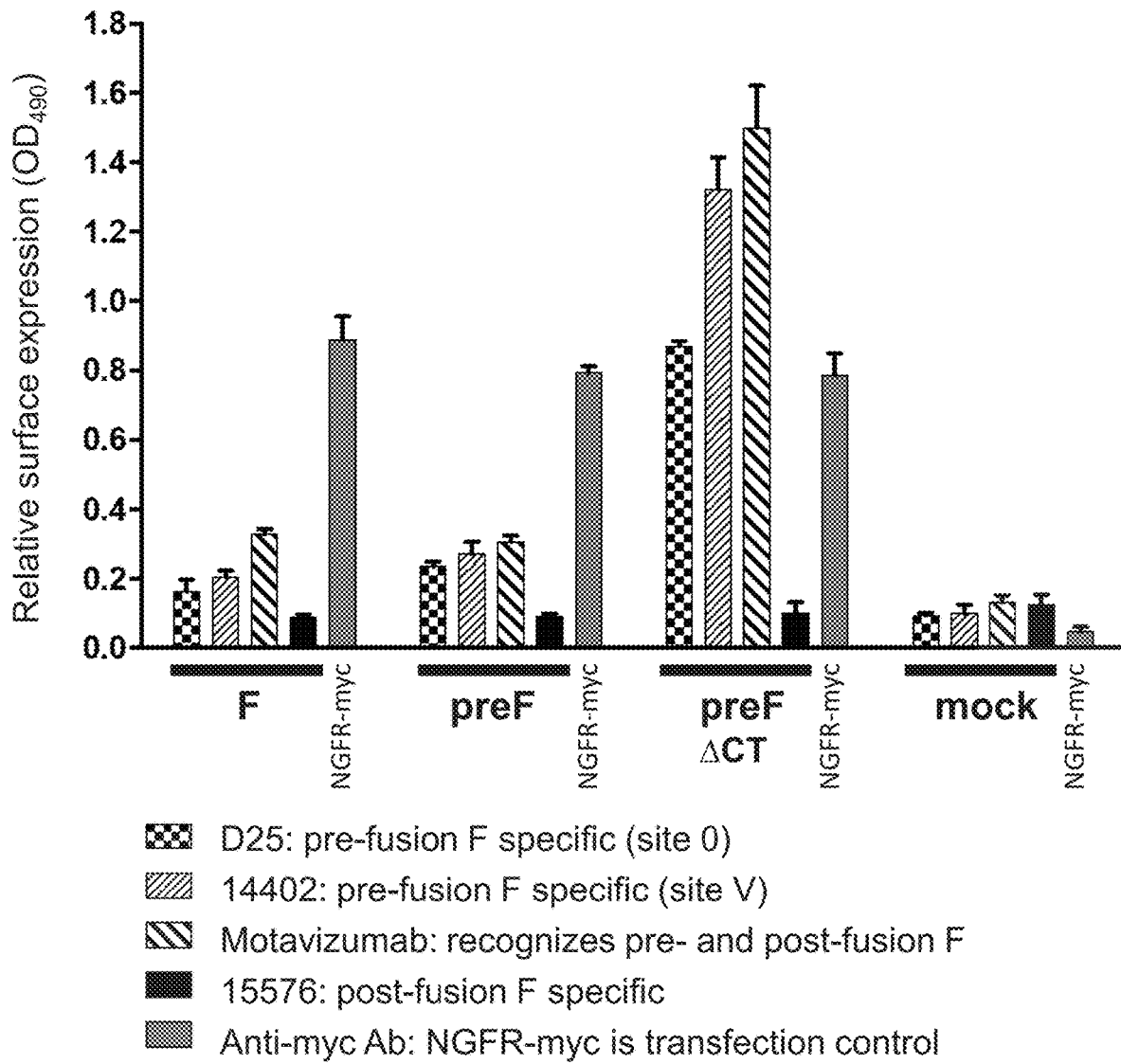


FIG. 4

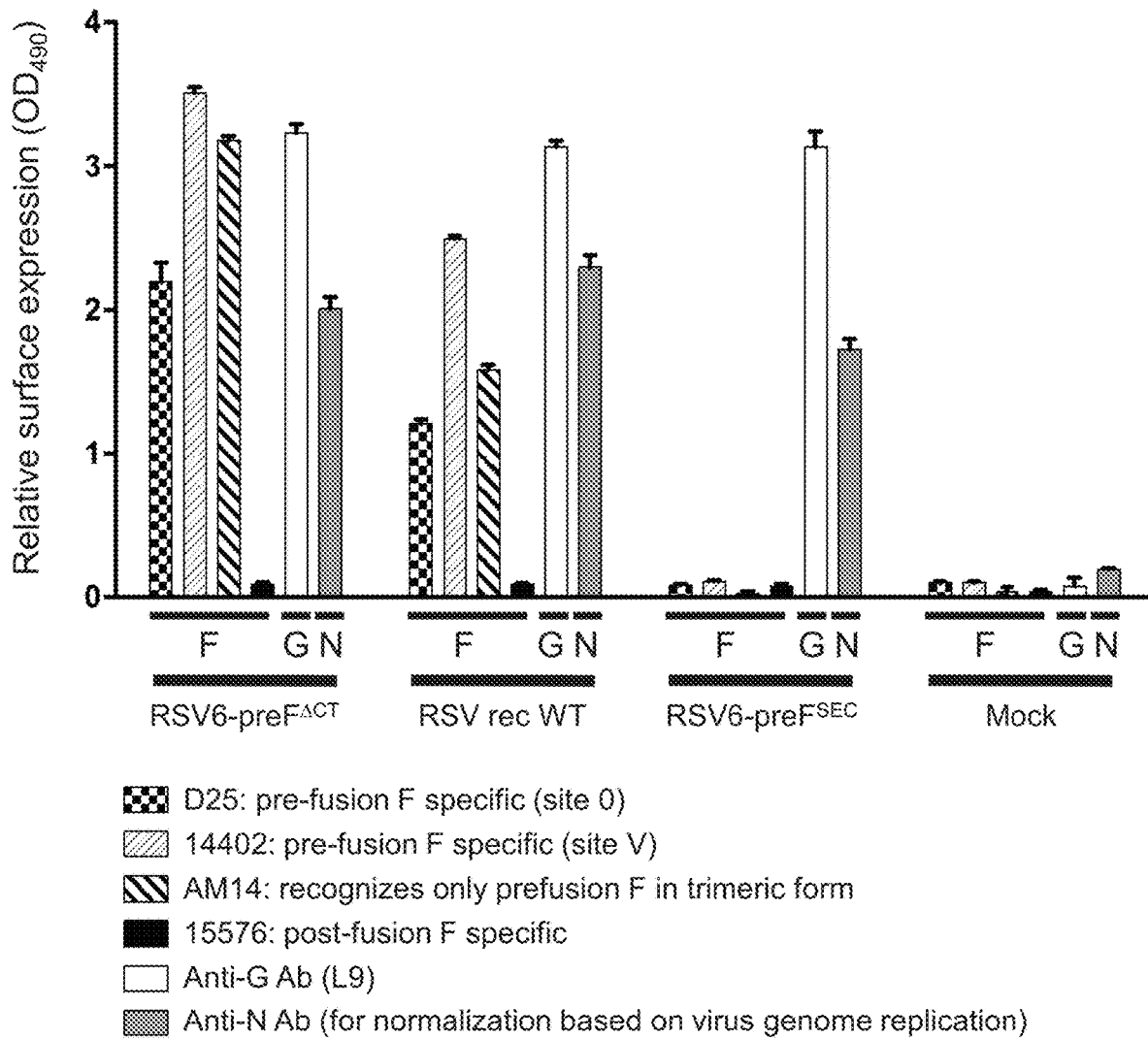


FIG. 5

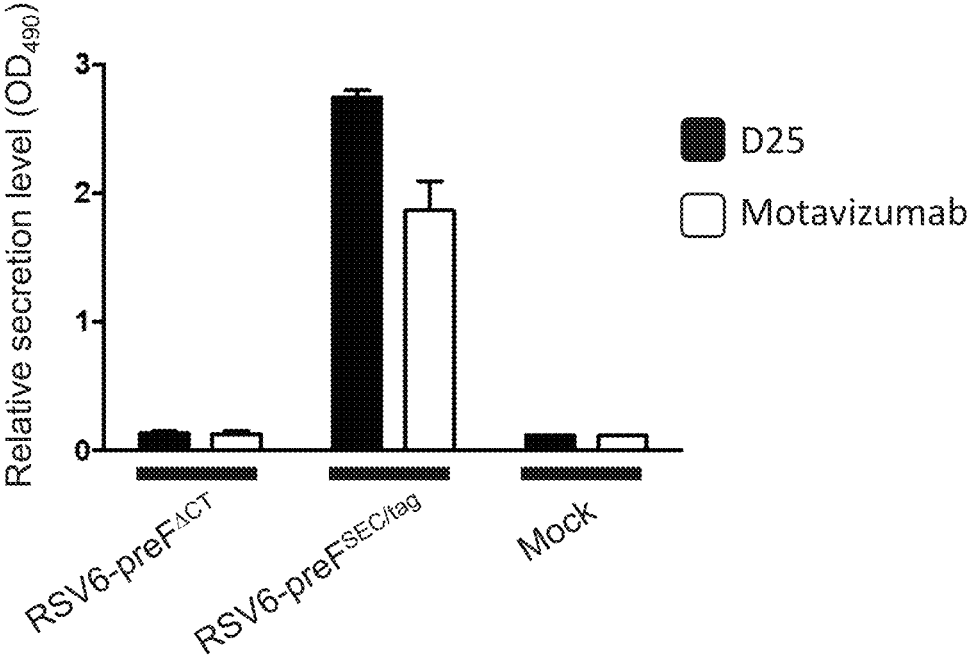


FIG. 6

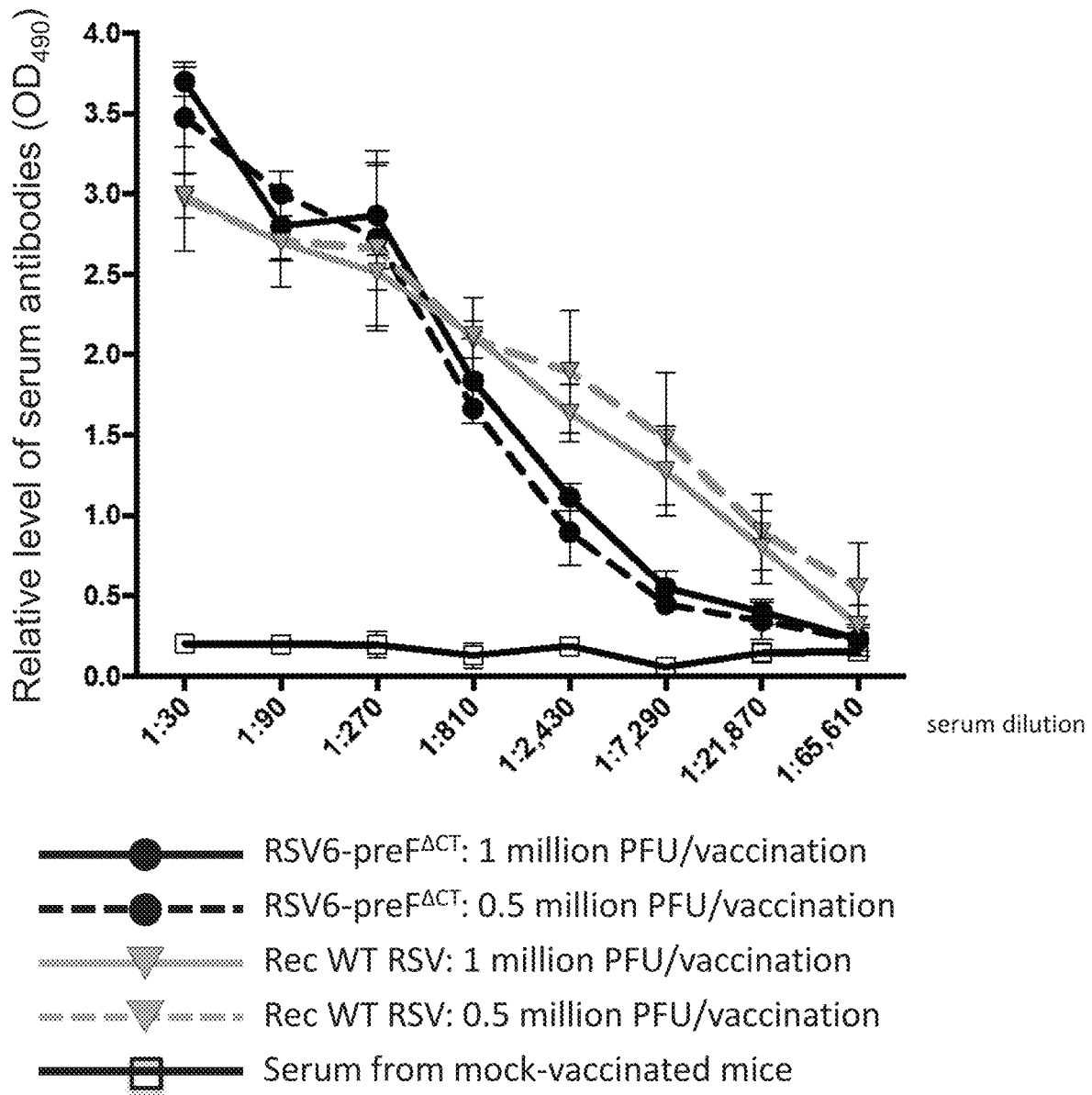
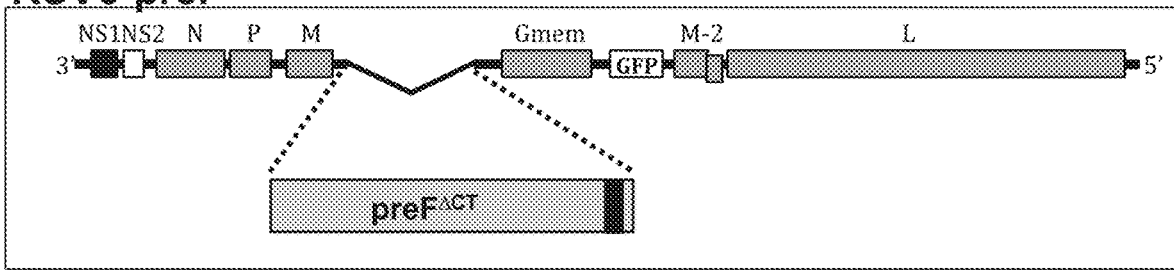
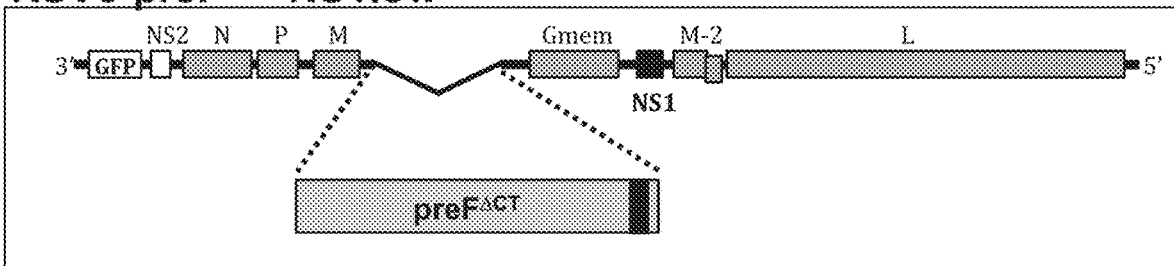


FIG. 7

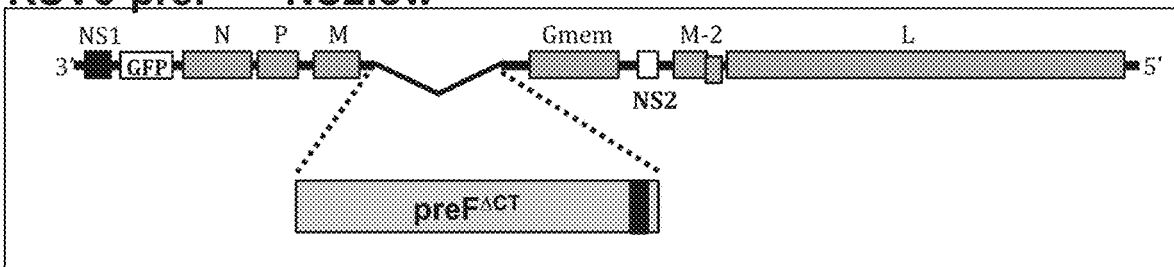
RSV6-preF^{ΔACT}



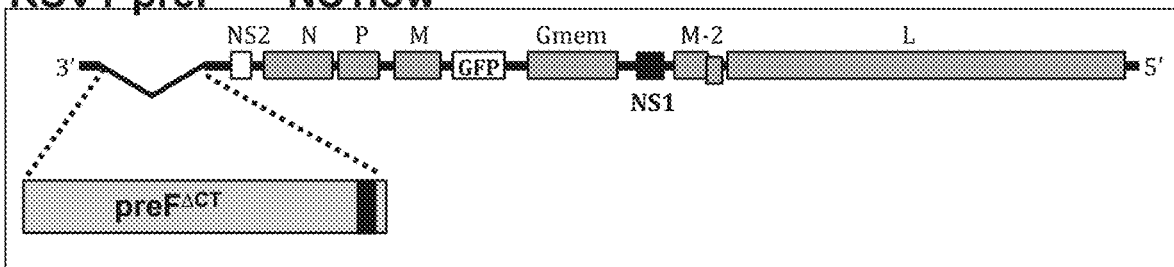
RSV6-preF^{ΔACT}-NS1low



RSV6-preF^{ΔACT}-NS2low



RSV1-preF^{ΔACT}-NS1low



RSV2-preF^{ΔACT}-NS2low

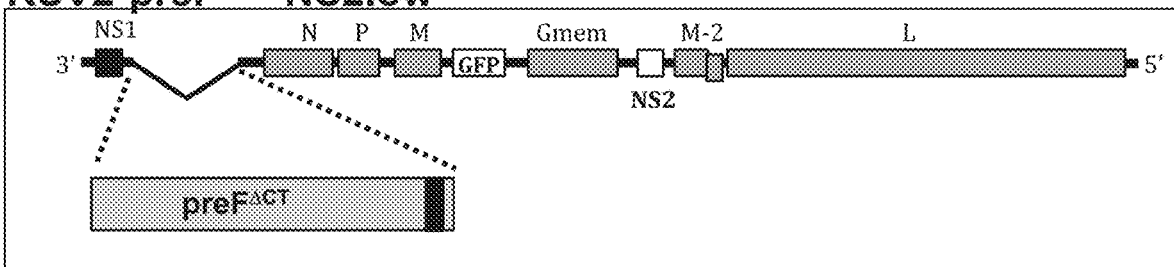


FIG. 8

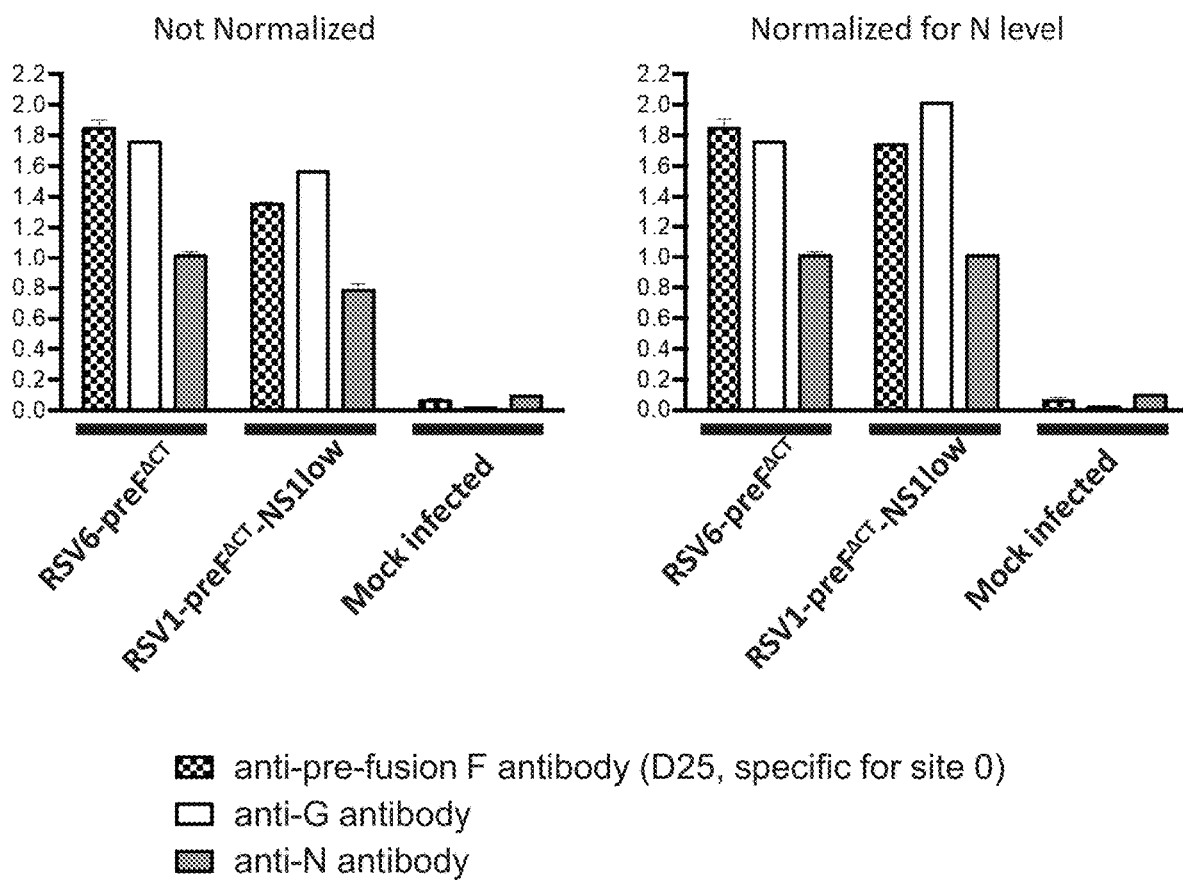


FIG. 9

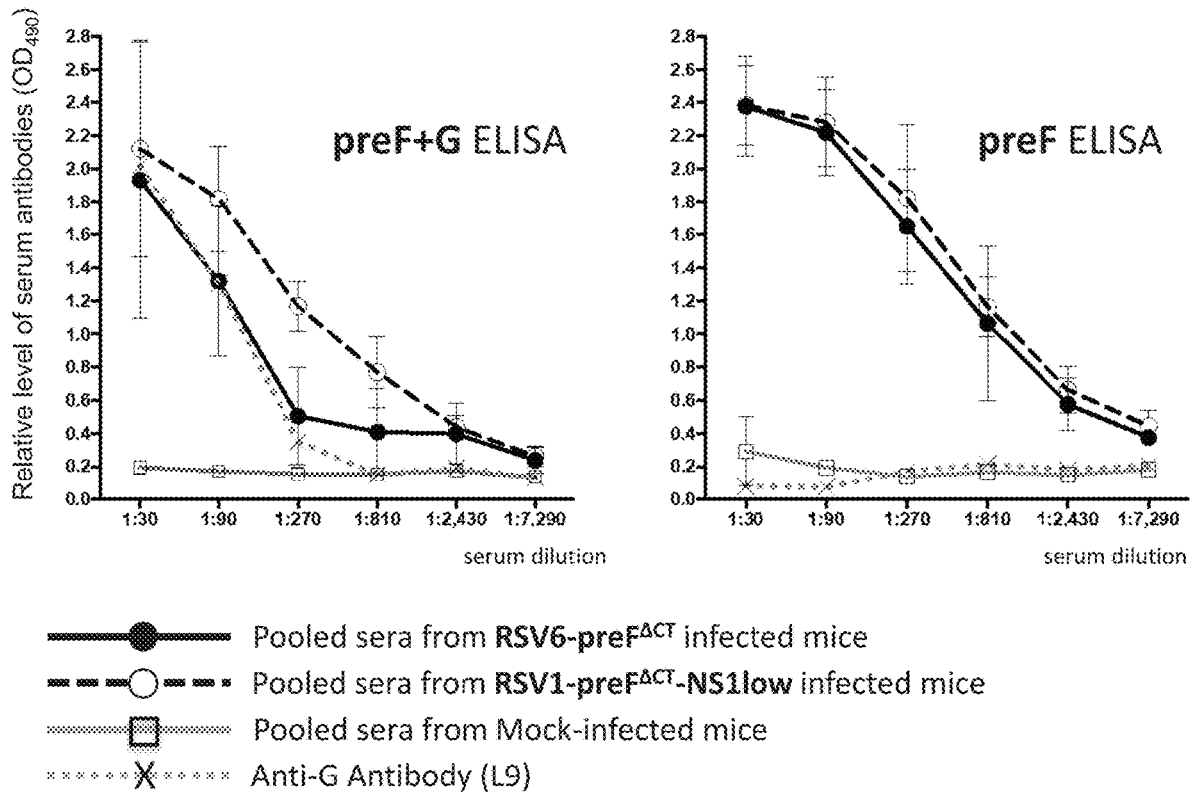


FIG. 10

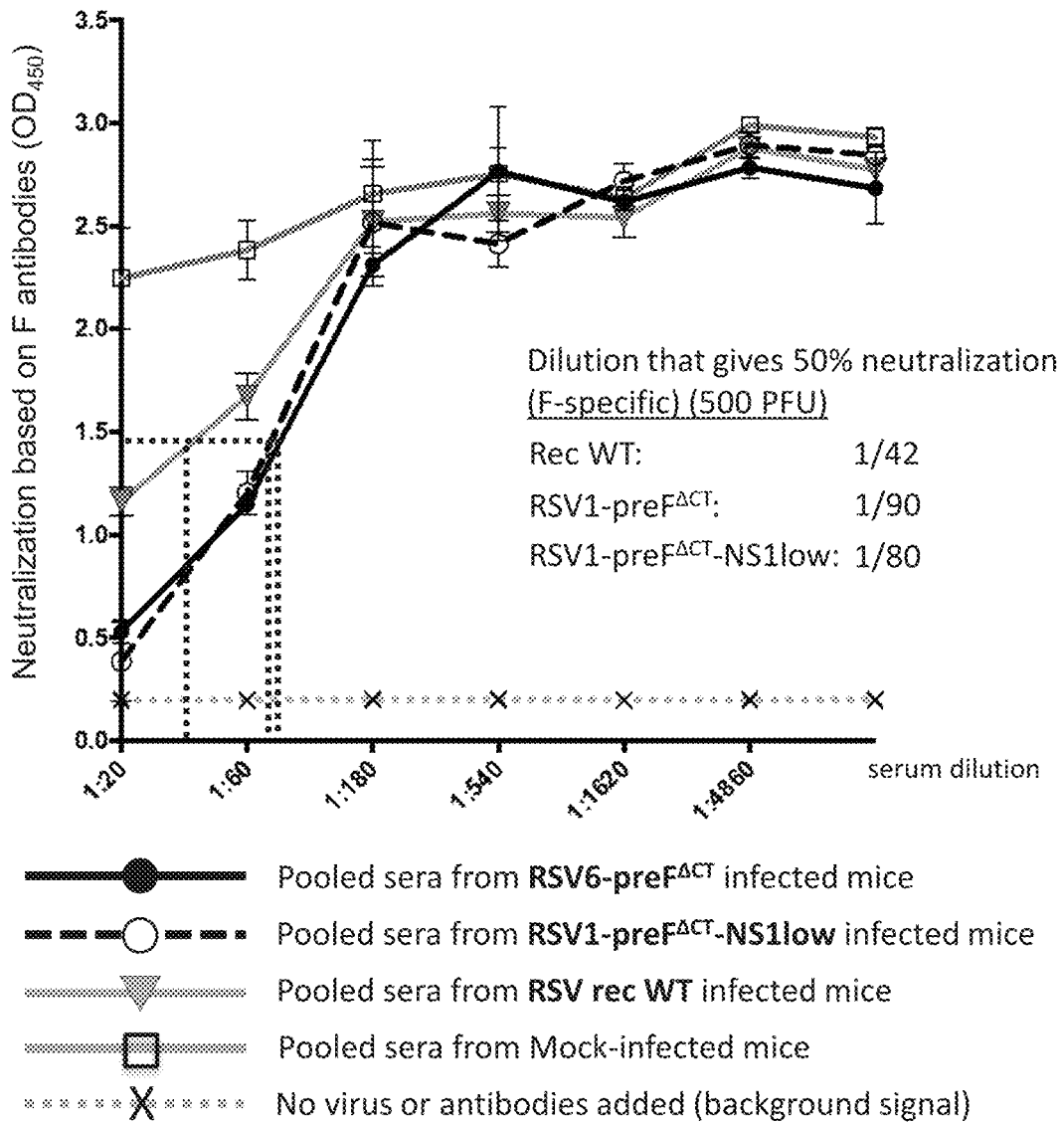


FIG. 11

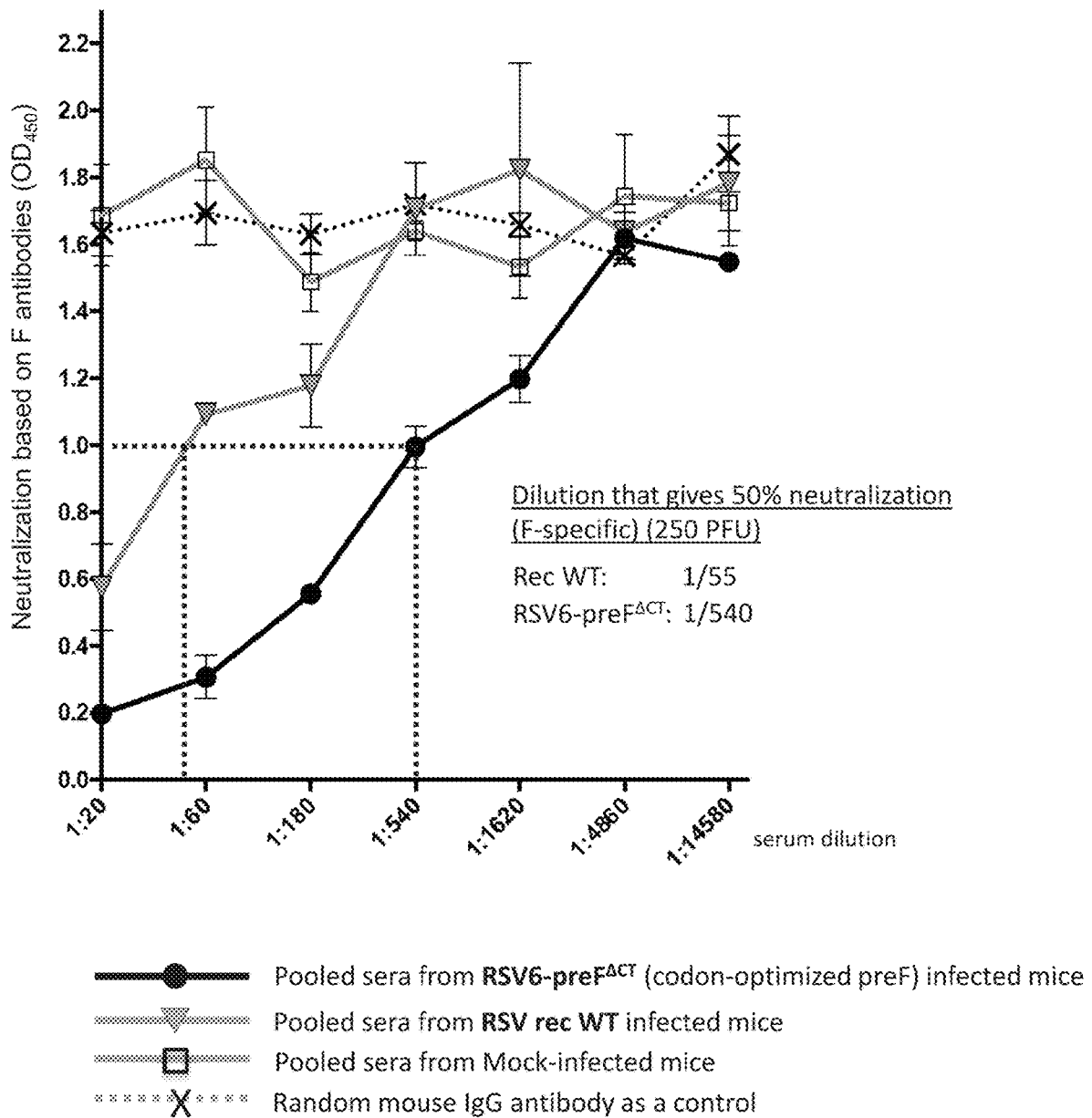


FIG. 12

RSV VACCINES AND METHODS OF PRODUCTION AND USE THEREOF

CROSS REFERENCE TO RELATED APPLICATIONS/INCORPORATION BY REFERENCE STATEMENT

This application claims benefit under 35 USC § 119(e) of provisional application U.S. Ser. No. 62/621,685, filed Jan. 25, 2018. The entire contents of the above-referenced application are expressly incorporated herein by reference.

STATEMENT REGARDING FEDERALLY SPONSORED RESEARCH OR DEVELOPMENT

This invention was made with U.S. Government support under NIH Grant No. 1R21AI128520-01A1 awarded by the Department of Health and Human Services. The Government has certain rights in this invention.

BACKGROUND

Respiratory Syncytial Virus (RSV) is the single largest viral cause of pediatric bronchiolitis and pneumonia, with a high worldwide mortality. In spite of many years of clinical trials and scientific progress, a safe and effective vaccine against RSV has still not been found. In the 1960s, a formalin-inactivated RSV vaccine (FI-RSV) induced an imbalance in the immune response which led to enhanced pathology after exposure to wild type RSV (known as vaccine-enhanced disease (VED)). Ever since this encounter with VED, it has been enormously challenging to impart both sufficient safety and efficacy in a single vaccine. Furthermore, there are age-specific challenges, and it is generally believed that different vaccine platforms will be needed for different populations and/or age groups to lessen the RSV-associated disease burden. For RSV-naïve children, live-attenuated vaccines are an important focus, because inactivated and subunit vaccines are poor at inducing cell-mediated immunity, and this is known to contribute to VED. Moreover, live vaccines typically can also induce broad systemic and local immunity. Thus, for RSV-naïve individuals, a live vaccine approach is an attractive option, provided the vaccine itself is sufficiently safe and cannot revert to a more aggressive phenotype.

RSV contains a negative-sense, single-stranded RNA genome that expresses eleven known proteins from ten genes (FIG. 2). Of these, the attachment (G) and fusion (F) proteins have been characterized as transmembrane (surface) glycoproteins and contain the major antigenic epitopes of human respiratory syncytial virus; as such, the G and F proteins appear to be critical for induction of neutralizing anti-RSV antibodies. In contrast to G, F is essential for virus infectivity.

U.S. Pat. No. 7,588,770 to Oomens et al., the entire contents of which are hereby expressly incorporated herein by reference, describes genetically modified RSVs generated by replacing genes encoding proteins such as F and G with genes encoding heterologous envelope proteins, e.g., a baculovirus GP64 envelope glycoprotein. Such genetically modified RSVs exhibit improved temperature stability and in some cases are infectious but incapable of cell-to-cell transmission. Thus, these attenuated viruses are safe for use in vaccines. However, a disadvantage of this technology is that removal of the F and G proteins from the virus greatly reduces antigenicity, thereby decreasing the ability of the viruses to elicit a robust, protective immune response.

It has recently been recognized that the viral fusion (F) protein is unstable and readily shifts to the post-fusion conformation during purification or vaccine preparation. As a result, a large proportion of vaccine-induced antibodies (Abs) target the post-fusion form, which is functionally obsolete. To avoid induction of anti-post-fusion F Abs, McLellan et al. were able to genetically stabilize the pre-fusion form (referred to as PreF), thereby greatly increasing neutralizing capacity of anti-F Abs when given as a protein vaccine (see, for example, US Patent Application Publication Nos. US 2015/0030622 (published Jan. 29, 2015 to Marshall et al.); US 2016/0031972 (published Feb. 4, 2016 to Zheng et al.); and US 2016/0046675 (published Feb. 18, 2016 to Kwong et al.); the entire contents of each of which are hereby expressly incorporated herein by reference). However, subunit vaccines are deemed unsafe for the RSV-naïve target population. In addition, stabilization of PreF renders it non-functional, and a virus solely expressing PreF is not viable.

Therefore, there is a need in the art for new and improved RSV vaccines that overcome the disadvantages and defects of the prior art. It is to such new and improved vaccines, as well as methods of production and use thereof, that the present disclosure is directed.

BRIEF DESCRIPTION OF THE DRAWINGS

FIG. 1 illustrates three versions of pre-fusion stabilized F protein variants that were generated for use in accordance with the present disclosure. These pre-fusion stabilized F protein variants are based on the previously described preF fusion protein variant DS-Cav-1 (see, for example, US 2015/0030622, US 2016/0031972, and US 2016/0046675, incorporated supra; and McLellan et al. (*Science* (2013) 342:592-598); the entire contents of which are expressly incorporated herein by reference). preF^{ACT} is a membrane-anchored version that is expressed and anchored at the surface of infected cells. RSV-preF^{SEC} is a secreted version that is secreted to the extracellular environment on infected cells. RSV-preF^{SEC/tag} is similar to RSV-preF^{SEC} but contains an epitope tag for easy identification and detection. The DS-Cav-1 mutations are shown by vertical lines. A wildtype F ORF is shown for comparison (574 amino acids). TMD=transmembrane domain. Tag=epitope tag.

FIG. 2 graphically depicts the engineering of RSV viruses with pre-fusion stabilized F variants at the 8th or 6th genome position. Panel A, the wildtype RSV genome; Panel B, RSV genomes with variants of pre-fusion stabilized F at the 8th genome position; and Panel C, RSV genomes with variants of pre-fusion stabilized F at the 6th genome position. The 6th genome position is more highly expressed than the 8th genome position, to enhance the level of pre-fusion F. All viruses have a GFP marker gene for tracking and assay purposes. GFP is not required and can be removed if necessary. All viruses also lack expression of the secreted G protein (indicated as Gmem), which is a known virulence factor.

FIG. 3 graphically depicts that removal of the cytoplasmic tail (CT) strongly improved cell-surface expression of pre-fusion F. HEp2 cells were transfected with the indicated F expressing plasmids. The F open reading frames were codon-optimized, as native F sequences express poorly in transfected cells. To each well, a plasmid expressing NGFR-myc was added as a transfection control (NGFR-myc is expressed at the cell surface). At 46 hour post-transfection, transfected cells were incubated with various F antibodies or

3

myc antibody as a control, and relative F surface levels were detected using standard ELISA.

FIG. 4 graphically depicts verification of the engineered viruses generated as in FIG. 2 as successfully expressing pre-fusion stabilized F protein variants. Cells infected by virus RSV8-preF^{ACT} were incubated with anti-F and anti-G antibodies at 26 hours post-infection, or mock-infected as a negative control, and subjected to ELISA. Three antibodies (provided by J S McLellan) were used to detect F. The first, Motavizumab (mota), detects both the pre-fusion and post-fusion conformation of F; the second and third antibodies (D25 and 14402) are known to detect a different epitope specific only for the pre-fusion conformation of F (site Ø and site V). The G protein was detected at similar levels. Abundant levels of pre-fusion F were expressed at the surface of vaccine-virus infected cells. All F Abs were applied at 0.1 µg/ml. Error bars are standard deviation of the mean from triplicate samples. Viruses RSV8-preF^{SEC} and RSV8-preF^{SEC/tag} have been similarly examined and also express pre-fusion F.

FIG. 5 graphically depicts that vaccine candidate RSV6-preF^{ACT} induced high surface levels of prefusion-F and G. HEp2 cells were infected with the indicated viruses. At 26 hours post-infection, infected cells were incubated with F, G, or N antibodies, and relative F and G surface levels were determined using ELISA (the N protein is an indicator of viral genomic replication and is shown for normalization purposes; to detect N, cells are detergent-permeabilized). Four F antibodies (provided by J S McLellan) were used to detect F. D25, 14402, and AM14 are specific for prefusion F. AM14 only recognizes correctly trimerized mature prefusion F. 15576 is specific for the postfusion conformation. Absence of 15576 signal shows that preF^{ACT} is entirely in the prefusion conformation. Abundant levels of conformationally correct pre-fusion F were expressed at the surface of vaccine-virus infected cells. As expected, the G protein was detected at similar levels. All F Abs were applied at 0.1 µg/ml. Error bars are standard deviation of the mean from triplicate samples.

FIG. 6 graphically depicts that vaccine candidate RSV6-preF^{SEC/tag} secreted high levels of prefusion F (this is the codon-optimized preF gene). HEp2 cells were infected with the indicated viruses. At 36 hours post-infection, supernatants of infected cells were harvested and incubated on ELISA plates coated with the anti-tag antibodies for 1 hour. Bound preF was then detected by ELISA using D25 and motavizumab as primary antibodies.

FIG. 7 graphically depicts that preF expressing single cycle RSV induced high levels of anti-RSV antibodies in vivo. 96 well plates were coated with preF+G by infecting HEp-2 cells with RSV6-preF^{ACT}. At 26 hours post-infection, preF and G proteins were present at the cell surface in conformationally accurate (native) form (as shown in FIG. 5). Pooled sera (n=3, collected at 3 weeks post-boost) from mice vaccinated prime/boost with RSV6-preF^{ACT} or RecWT virus were incubated on the coated ELISA plates, and antibody levels were determined using ELISA.

FIG. 8 graphically depicts a schematic overview of examples of different preF-based single cycle RSV vaccines. First panel, RSV6-preF^{ACT}; second panel, RSV6-preF^{ACT}-NS1low; third panel, RSV6-preF^{ACT}-NS2low; fourth panel, RSV1-preF^{ACT}-NS1low; fifth panel, RSV2-preF^{ACT}-NS2low.

FIG. 9 graphically depicts that different preF RSV vaccines induced high levels of preF and G protein at the cell surface. HEp-2 cells were infected with viruses RSV6-preF^{ACT} and RSV1-preF^{ACT}-NS1low. At 26 hours post-

4

infection, infected cells were incubated with anti-preF and anti-G antibodies, which were subsequently detected by standard ELISA method. Anti-N antibody was also used as an indicator for viral genomic replication (N encapsulates the viral genome), and preF and G antibody levels were determined without and with N level-based normalization.

FIG. 10 graphically depicts that different preF RSV vaccines induced high levels of preF-specific and G-specific antibodies in vivo. 96 well plates were coated with preF+G or preF alone as follows: HEp-2 cells were infected with RSV6-preF^{ACT} or RSV6-preF^{ACT}-AG (G gene removed). At 26 hours post-infection, either preF+G or preF alone were present at the cell surface in conformationally accurate (native) form (as shown in FIG. 5). Pooled sera (n=3, collected at 3 weeks post-boost) from mice vaccinated prime/boost with RSV6-preF^{ACT} and RSV1-preF^{ACT}-NS1low were incubated on the coated ELISA plates (preF+G on the left; preF alone on the right), and antibody levels were determined using standard ELISA method. Anti-G Ab L9 was used to verify the absence of G protein in the preF-alone ELISA.

FIG. 11 graphically depicts that two distinct preF RSV vaccines induced higher neutralizing antibody activity than a wildtype virus, despite being designed as safe, single-cycle vaccines. Three-fold dilutions of pooled mice sera (3 mice per pool; sera harvested 3 weeks post-boost) were incubated with 500 PFU of virus RSV-AG-HRP, which lacks the G protein (allowing detection of F-specific neutralization) and contains the HRP gene for detection. After a one hour incubation, virus-antibody suspensions were incubated on HEp-2 cells for 1.5 hours. Inoculum was removed and cells incubated for a total of 48 hours post-infection (hpi). At 48 hpi, medium was replaced with standard (TMB) ELISA substrate, and OD₄₅₀ was determined after 30 minutes as a measure of virus replication.

FIG. 12 graphically depicts that the preF RSV vaccine RSV6-preF^{ACT} (codon-optimized PreF) induced higher neutralizing antibody activity than a wildtype virus, despite being designed as a safe, single-cycle vaccine. Three-fold dilutions of pooled mice sera (3 mice per pool; sera harvested 3 weeks post-boost) were incubated with 250 PFU of virus RSV-AG-HRP, which lacks the G protein (allowing detection of F-specific neutralization) and contains the HRP gene for detection. After a one hour incubation, virus-antibody suspensions were incubated on HEp-2 cells for 1.5 hours. Inoculum was removed and cells incubated for a total of 48 hours post-infection (hpi). At 48 hpi, medium was replaced with standard (TMB) ELISA substrate, and OD₄₅₀ was determined after 30 minutes as a measure of virus replication.

DETAILED DESCRIPTION

Before explaining at least one embodiment of the inventive concept(s) in detail by way of exemplary language and results, it is to be understood that the inventive concept(s) is not limited in its application to the details of construction and the arrangement of the components set forth in the following description. The inventive concept(s) is capable of other embodiments or of being practiced or carried out in various ways. As such, the language used herein is intended to be given the broadest possible scope and meaning; and the embodiments are meant to be exemplary—not exhaustive. Also, it is to be understood that the phraseology and terminology employed herein is for the purpose of description and should not be regarded as limiting.

Unless otherwise defined herein, scientific and technical terms used in connection with the presently disclosed inventive concept(s) shall have the meanings that are commonly understood by those of ordinary skill in the art. Further, unless otherwise required by context, singular terms shall include pluralities and plural terms shall include the singular. The foregoing techniques and procedures are generally performed according to conventional methods well known in the art and as described in various general and more specific references that are cited and discussed throughout the present specification. The nomenclatures utilized in connection with, and the laboratory procedures and techniques of, analytical chemistry, synthetic organic chemistry, and medicinal and pharmaceutical chemistry described herein are those well-known and commonly used in the art. Standard techniques are used for chemical syntheses and chemical analyses.

All patents, published patent applications, and non-patent publications mentioned in the specification are indicative of the level of skill of those skilled in the art to which this presently disclosed inventive concept(s) pertains. All patents, published patent applications, and non-patent publications referenced in any portion of this application are herein expressly incorporated by reference in their entirety to the same extent as if each individual patent or publication was specifically and individually indicated to be incorporated by reference.

All of the compositions and/or methods disclosed herein can be made and executed without undue experimentation in light of the present disclosure. While the compositions and methods of the inventive concept(s) have been described in terms of particular embodiments, it will be apparent to those of skill in the art that variations may be applied to the compositions and/or methods and in the steps or in the sequence of steps of the methods described herein without departing from the concept, spirit, and scope of the inventive concept(s). All such similar substitutions and modifications apparent to those skilled in the art are deemed to be within the spirit, scope, and concept of the inventive concept(s) as defined by the appended claims.

As utilized in accordance with the present disclosure, the following terms, unless otherwise indicated, shall be understood to have the following meanings:

The use of the term “a” or “an” when used in conjunction with the term “comprising” in the claims and/or the specification may mean “one,” but it is also consistent with the meaning of “one or more,” “at least one,” and “one or more than one.” As such, the terms “a,” “an,” and “the” include plural referents unless the context clearly indicates otherwise. Thus, for example, reference to “a compound” may refer to one or more compounds, two or more compounds, three or more compounds, four or more compounds, or greater numbers of compounds. The term “plurality” refers to “two or more.”

The use of the term “at least one” will be understood to include one as well as any quantity more than one, including but not limited to, 2, 3, 4, 5, 10, 15, 20, 30, 40, 50, 100, etc. The term “at least one” may extend up to 100 or 1000 or more, depending on the term to which it is attached; in addition, the quantities of 100/1000 are not to be considered limiting, as higher limits may also produce satisfactory results. In addition, the use of the term “at least one of X, Y, and Z” will be understood to include X alone, Y alone, and Z alone, as well as any combination of X, Y, and Z. The use of ordinal number terminology (i.e., “first,” “second,” “third,” “fourth,” etc.) is solely for the purpose of differentiating between two or more items and is not meant to imply

any sequence or order or importance to one item over another or any order of addition, for example.

The use of the term “or” in the claims is used to mean an inclusive “and/or” unless explicitly indicated to refer to alternatives only or unless the alternatives are mutually exclusive. For example, a condition “A or B” is satisfied by any of the following: A is true (or present) and B is false (or not present), A is false (or not present) and B is true (or present), and both A and B are true (or present).

As used herein, any reference to “one embodiment,” “an embodiment,” “some embodiments,” “one example,” “for example,” or “an example” means that a particular element, feature, structure, or characteristic described in connection with the embodiment is included in at least one embodiment. The appearance of the phrase “in some embodiments” or “one example” in various places in the specification is not necessarily all referring to the same embodiment, for example. Further, all references to one or more embodiments or examples are to be construed as non-limiting to the claims.

Throughout this application, the term “about” is used to indicate that a value includes the inherent variation of error for a composition/apparatus/device, the method being employed to determine the value, or the variation that exists among the study subjects. For example, but not by way of limitation, when the term “about” is utilized, the designated value may vary by plus or minus twenty percent, or fifteen percent, or twelve percent, or eleven percent, or ten percent, or nine percent, or eight percent, or seven percent, or six percent, or five percent, or four percent, or three percent, or two percent, or one percent from the specified value, as such variations are appropriate to perform the disclosed methods and as understood by persons having ordinary skill in the art.

As used in this specification and claim(s), the words “comprising” (and any form of comprising, such as “comprise” and “comprises”), “having” (and any form of having, such as “have” and “has”), “including” (and any form of including, such as “includes” and “include”), or “containing” (and any form of containing, such as “contains” and “contain”) are inclusive or open-ended and do not exclude additional, unrecited elements or method steps.

The term “or combinations thereof” as used herein refers to all permutations and combinations of the listed items preceding the term. For example, “A, B, C, or combinations thereof” is intended to include at least one of: A, B, C, AB, AC, BC, or ABC, and if order is important in a particular context, also BA, CA, CB, CBA, BCA, ACB, BAC, or CAB. Continuing with this example, expressly included are combinations that contain repeats of one or more item or term, such as BB, AAA, AAB, BBC, AAABCCCC, CBBAAA, CABABB, and so forth. The skilled artisan will understand that typically there is no limit on the number of items or terms in any combination, unless otherwise apparent from the context.

As used herein, the term “substantially” means that the subsequently described event or circumstance completely occurs or that the subsequently described event or circumstance occurs to a great extent or degree. For example, when associated with a particular event or circumstance, the term “substantially” means that the subsequently described event or circumstance occurs at least 80% of the time, or at least 85% of the time, or at least 90% of the time, or at least 95% of the time. For example, the term “substantially adjacent” may mean that two items are 100% adjacent to one another, or that the two items are within close proximity to one another but not 100% adjacent to one another, or that a

portion of one of the two items is not 100% adjacent to the other item but is within close proximity to the other item.

The term “polypeptide” as used herein will be understood to refer to a polymer of amino acids. The polymer may include d-, l-, or artificial variants of amino acids. In addition, the term “polypeptide” will be understood to include peptides, proteins, and glycoproteins.

The term “polynucleotide” as used herein will be understood to refer to a polymer of two or more nucleotides. Nucleotides, as used herein, will be understood to include deoxyribose nucleotides and/or ribose nucleotides, as well as artificial variants thereof. The term polynucleotide also includes single-stranded and double-stranded molecules.

The terms “analog” or “variant” as used herein will be understood to refer to a variation of the normal or standard form or the wild-type form of molecules. For polypeptides or polynucleotides, an analog may be a variant (polymorphism), a mutant, and/or a naturally or artificially chemically modified version of the wild-type polynucleotide (including combinations of the above). Such analogs may have higher, full, intermediate, or lower activity than the normal form of the molecule, or no activity at all. Alternatively and/or in addition thereto, for a chemical, an analog may be any structure that has the desired functionalities (including alterations or substitutions in the core moiety), even if comprised of different atoms or isomeric arrangements.

As used herein, the phrases “associated with” and “coupled to” include both direct association/binding of two moieties to one another as well as indirect association/binding of two moieties to one another. Non-limiting examples of associations/couplings include covalent binding of one moiety to another moiety either by a direct bond or through a spacer group, non-covalent binding of one moiety to another moiety either directly or by means of specific binding pair members bound to the moieties, incorporation of one moiety into another moiety such as by dissolving one moiety in another moiety or by synthesis, and coating one moiety on another moiety, for example.

As used herein, “substantially pure” means an object species is the predominant species present (i.e., on a molar basis it is more abundant than any other individual species in the composition), and preferably a substantially purified fraction is a composition wherein the object species comprises at least about 50 percent (on a molar basis) of all macromolecular species present. Generally, a substantially pure composition will comprise more than about 80 percent of all macromolecular species present in the composition, more preferably more than about 85%, 90%, 95%, and 99%. Most preferably, the object species is purified to essential homogeneity (contaminant species cannot be detected in the composition by conventional detection methods) wherein the composition consists essentially of a single macromolecular species.

The term “pharmaceutically acceptable” refers to compounds and compositions which are suitable for administration to humans and/or animals without undue adverse side effects such as (but not limited to) toxicity, irritation, and/or allergic response commensurate with a reasonable benefit/risk ratio.

The term “patient” as used herein includes human and veterinary subjects. “Mammal” for purposes of treatment refers to any animal classified as a mammal, including (but not limited to) humans, domestic and farm animals, nonhuman primates, and any other animal that has mammary tissue.

The term “child” is meant to refer to a human individual who would be recognized by one of skill in the art as an

infant, toddler, etc., or an individual less than about 18 years of age, usually less than about 16 years of age, usually less than about 14 years of age, or even less (e.g., from newborn to about 2, about 3, about 4, about 5, about 6, about 7, about 8, about 9, about 10, about 11, or about 12 years of age). The term “elderly” generally refers to a human individual whose age is greater than about 50 years of age, usually greater than about 55 years of age, frequently greater than about 60 years of age or more (e.g., about 65 years of age and upwards).

The term “treatment” refers to both therapeutic treatment and prophylactic or preventative measures. Those in need of treatment include, but are not limited to, individuals already having a particular condition/disease/infection as well as individuals who are at risk of acquiring a particular condition/disease/infection (e.g., those needing prophylactic/preventative measures). The term “treating” refers to administering an agent to a patient for therapeutic and/or prophylactic/preventative purposes.

A “therapeutic composition” or “pharmaceutical composition” refers to an agent that may be administered in vivo to bring about a therapeutic and/or prophylactic/preventative effect.

Administering a therapeutically effective amount or prophylactically effective amount is intended to provide a therapeutic benefit in the treatment, prevention, and/or management of a disease, condition, and/or infection. The specific amount that is therapeutically effective can be readily determined by the ordinary medical practitioner, and can vary depending on factors known in the art, such as (but not limited to) the type of condition/disease/infection, the patient’s history and age, the stage of the condition/disease/infection, and the co-administration of other agents.

The term “effective amount” refers to an amount of a biologically active molecule or conjugate or derivative thereof sufficient to exhibit a detectable therapeutic effect without undue adverse side effects (such as (but not limited to) toxicity, irritation, and allergic response) commensurate with a reasonable benefit/risk ratio when used in the manner of the inventive concept(s). The therapeutic effect may include, for example but not by way of limitation, preventing, inhibiting, or reducing the occurrence of infection by or growth of microbes and/or opportunistic infections. The effective amount for a subject will depend upon the type of subject, the subject’s size and health, the nature and severity of the condition/disease/infection to be treated, the method of administration, the duration of treatment, the nature of concurrent therapy (if any), the specific formulations employed, and the like. Thus, it is not possible to specify an exact effective amount in advance. However, the effective amount for a given situation can be determined by one of ordinary skill in the art using routine experimentation based on the information provided herein.

As used herein, the term “concurrent therapy” is used interchangeably with the terms “combination therapy” and “adjunct therapy,” and will be understood to mean that the patient in need of treatment is treated or given another drug for the disease/infection in conjunction with the pharmaceutical compositions of the present disclosure. This concurrent therapy can be sequential therapy, where the patient is treated first with one pharmaceutical composition and then the other pharmaceutical composition, or the two pharmaceutical compositions are given simultaneously.

The terms “administration” and “administering,” as used herein, will be understood to include all routes of administration known in the art, including but not limited to, oral, topical, transdermal, parenteral, subcutaneous, intranasal, mucosal, intramuscular, intraperitoneal, intravitreal, and

intravenous routes, and including both local and systemic applications. In addition, the compositions of the present disclosure (and/or the methods of administration of same) may be designed to provide delayed, controlled, or sustained release using formulation techniques which are well known in the art.

Turning now to the inventive concept(s), certain non-limiting embodiments of the present disclosure are directed to a recombinant, live, attenuated virus of the Pneumoviridae family. The recombinant, live, attenuated virus includes a baculovirus GP64 envelope glycoprotein or variant or fragment thereof and a polynucleotide encoding a respiratory syncytial virus (RSV) F protein variant or fragment thereof. The baculovirus G64 envelope glycoprotein or fragment thereof is capable of mediating entry of the recombinant virus into a mammalian cell. The respiratory syncytial virus (RSV) F protein variant or fragment thereof includes at least one amino acid substitution when compared to a native RSV F protein, wherein the at least one amino acid substitution stabilizes the RSV F protein variant or fragment thereof in a pre-fusion conformation.

In certain non-limiting embodiments, the recombinant, live, attenuated virus is isolated from the cell in which it is produced.

In certain non-limiting embodiments, the recombinant, live, attenuated virus is further defined as a recombinant respiratory syncytial virus (RSV).

In certain non-limiting embodiments, the recombinant, live, attenuated virus is capable of infecting a cell in a mammal but cannot transmit from said cell to another cell in the mammal.

In certain non-limiting embodiments, the recombinant, live, attenuated virus is further defined as an enveloped recombinant, live, attenuated virus.

Also, in certain non-limiting embodiments, the recombinant, live, attenuated virus maintains infective stability when stored at above 0° C. for at least 3.5 days.

Any baculovirus GP64 envelope glycoprotein, variant thereof, or fragment thereof known in the art or otherwise contemplated herein may be utilized in accordance with the present disclosure, so long as the protein/variant/fragment is capable of mediating entry of the recombinant virus into a mammalian cell. In certain particular (but non-limiting) embodiments, the baculovirus GP64 envelope glycoprotein or variant or fragment thereof comprises an ectodomain of the baculovirus GP64 envelope glycoprotein, a transmembrane domain of the baculovirus GP64 envelope glycoprotein, and/or a heterologous cytoplasmic tail (such as, but not limited to, a polypeptide from the F protein (such as, but not limited to, a 12 amino acid polypeptide). Non-limiting examples of GP64 proteins/variants/fragments that may be utilized in accordance with the present disclosure are disclosed in US Patent Application Publication No. 2007/0104734, published May 10, 2007 to Oomens et al. and U.S. Pat. No. 7,588,770, issued Sep. 15, 2009 to Oomens et al., as well as Oomens et al. (*Journal of Virology* (2004) 78:9064-9072); the entire contents of each of the above references are hereby expressly incorporated herein by reference. One particular (but non-limiting) example of a GP64 glycoprotein variant disclosed in the above references that may be utilized in accordance with the present disclosure is GP^{64/F}, in which the 7-amino acid cytoplasmic tail domain of GP64 was replaced by the 12 C-terminal amino acids of the HRSV F protein; the amino acid sequence of GP^{64/F} is represented by SEQ ID NO:15, and the nucleotide sequence encoding same is represented by SEQ ID NO:16.

In addition, the baculovirus GP64 envelope glycoprotein or variant or fragment thereof may not be directly encoded by the virus but rather is obtained from the cell line from which the virus is produced. Alternatively, the GP64 glycoprotein or variant or fragment thereof may be encoded by the virus.

Also, the recombinant, live, attenuated virus may further encode at least one other protein normally encoded by the virus' wild type genome, or may further encode at least one variant or fragment thereof. For example (but not by way of limitation), the virus may further encode at least one of RSV NS1 protein or a variant or fragment thereof; NS2 protein or a variant or fragment thereof; N protein or a variant or fragment thereof; P protein or a variant or fragment thereof; M protein or a variant or fragment thereof; SH protein or a variant or fragment thereof; G protein or a variant or fragment thereof; M-2 protein or a variant or fragment thereof; L protein or a variant or fragment thereof; or any combination thereof. One particular (but non-limiting) variant or fragment of a genomic protein that may be utilized is the secreted G protein (known as Gmem); the amino acid sequence of Gmem is represented by SEQ ID NO:13, and the nucleotide sequence encoding same is represented by SEQ ID NO:14. Alternatively, the wild type RSV G protein may be present in any of the recombinant, live, attenuated viruses of the present disclosure; the gene encoding the wild type RSV G protein is represented by SEQ ID NO:17, while a codon-optimized sequence encoding the wild type RSV G protein is represented by SEQ ID NO:18.

In certain embodiments, the virus may be further defined as lacking expression of at least one virulence factor encoded by the wild type virus, such as (but not limited to), the NS1 or NS2 protein or Gmem.

Any RSV F protein variant or fragment thereof known in the art or otherwise contemplated herein may be utilized in accordance with the present disclosure, so long as the RSV F protein variant or fragment thereof includes at least one amino acid substitution compared to a native RSV F protein that stabilizes the RSV F protein variant or fragment thereof in a pre-fusion conformation. Any amino acid substitution(s) capable of stabilizing the RSV F protein variant/fragment in the pre-fusion confirmation may be utilized in accordance with the present disclosure. Particular (but non-limiting) examples of RSV F protein variants or fragments thereof that can be utilized in accordance with the present disclosure include RSV F protein variants or fragments thereof that include at least one, at least two, at least three, or all four of the amino acid substitutions S155C, S190F, V207L, and S290C when compared to the native RSV F protein sequence, as represented by SEQ ID NO:1. For example (but not by way of limitation), the RSV F protein variant or fragment thereof can comprise an amino acid sequence represented by at least one of SEQ ID NOS:2-4 (see Table 1 and FIG. 1).

In certain non-limiting embodiments, the RSV F protein variant or fragment thereof is absent a portion or all of a cytoplasmic tail and/or a portion or all of a transmembrane domain of the native RSV F protein. Alternatively, the RSV F protein variant or fragment thereof may include a portion or all of the cytoplasmic tail and/or a portion or all of the transmembrane domain of the native RSV F protein. In one particular (but non-limiting) embodiment, the transmembrane domain approximately corresponds to residues 525-550 of SEQ ID NO:1, while the cytoplasmic tail approximately corresponds to residues 554-574 of SEQ ID NO:1.

Alternatively (and/or in addition thereto), the RSV F protein variant or fragment thereof further comprises at least

one epitope tag. One non-limiting example of an epitope tag that may be utilized in accordance with the present disclosure is the AcV5 epitope tag. The amino acid sequence of the AcV5 epitope tag is represented by SEQ ID NO:11, and the nucleotide sequence of this tag is represented by SEQ ID NO:12.

Alternatively (and/or in addition to thereto), the RSV F protein variant or fragment thereof may further include a detectable marker.

As stated herein above, any amino acid substitution(s) capable of stabilizing the RSV F protein variant/fragment in the pre-fusion conformation may be utilized in accordance with the present disclosure. Non-limiting examples of RSV F protein variants or fragments thereof (that contain one or more amino acid substitution(s) capable of stabilizing the RSV F protein variant/fragment in the pre-fusion conformation) are disclosed in US Patent Application Publication Nos. US 2015/0030622, US 2016/0031972, and US 2016/0046675 (all incorporated supra); McLellan et al. (*Science* (2013) 342:592-598); Krarup et al. (*Nature Communications* (2015) 6:8143 (Pages 1-12); and Joyce et al. (*Nature Structural and Molecular Biology* (2016) 23:811-822); the entire contents of these references being expressly incorporated herein by reference.

Any polynucleotide encoding any of the RSV F protein variants or fragments thereof may be utilized in accordance with the present disclosure. In certain non-limiting embodiments, the polynucleotide sequence corresponds to the wild type RSV F protein sequence (except for the codons encoding the amino acid substitution(s)). Alternatively, the polynucleotide sequence may be codon-optimized to increase expression thereof in a host cell. For example, as shown in Table 1, SEQ ID NOS:8, 9, and 10 contain polynucleotide sequences that encode the variants of SEQ ID NOS:2, 3, and 4, respectively, and are identical to the corresponding portion of the nucleotide sequence of the wild type F protein sequence, with the exception of the codons encoding for the amino acid substitutions. Alternatively, SEQ ID NOS:5, 6, and 7 also encode the variants of SEQ ID NOS:2, 3, and 4, respectively, but these polynucleotides have been codon-optimized to increase the expression thereof in a host cell.

TABLE 1

RSV F Protein Variant*	Nucleotide Sequence		Nucleotide Sequence Based on Codon-Optimized RSV F Sequence
	AA Sequence	Based on WT RSV F Sequence	
preF ^{ACT}	SEQ ID NO: 2	SEQ ID NO: 8	SEQ ID NO: 5
preF ^{SEC}	SEQ ID NO: 3	SEQ ID NO: 9	SEQ ID NO: 6
preF ^{SEC/tag}	SEQ ID NO: 4	SEQ ID NO: 10	SEQ ID NO: 7

*See FIG. 1 for the structures of each of the RSV F protein variants

In certain non-limiting embodiments, the recombinant, live, attenuated virus further comprises the expressed RSV F protein variant or fragment thereof (as opposed to simply including the polynucleotide sequence encoding same).

Certain non-limiting embodiments of the present disclosure are also directed to an isolated immunogenic composition comprising any of the viruses described or otherwise contemplated herein.

Further non-limiting embodiments of the present disclosure are directed to at least one cell that is capable of producing any of the recombinant, live, attenuated viruses described or otherwise contemplated herein. The cell(s) includes: (i) at least one polynucleotide encoding a baculovirus GP64 envelope glycoprotein or variant or fragment

thereof; and (ii) at least one polynucleotide encoding at least a portion of a genome of an infection-attenuated virus of the Pneumoviridae family, wherein the genome comprises a gene encoding an RSV F protein variant or fragment thereof that comprises at least one amino acid substitution compared to a native RSV F protein, wherein the at least one amino acid substitution stabilizes the RSV F protein variant or fragment thereof in a pre-fusion conformation. In certain non-limiting embodiments, the RSV genome includes other additions or modification thereto.

Any cell type capable of producing the recombinant, live, attenuated viruses and capable of functioning as described or otherwise contemplated herein falls within the scope of the present disclosure. In certain non-limiting embodiments, the cell is a mammalian cell. In certain particular (but non-limiting) embodiments, the cell is a Vero or HEp-2 cell, or any high-producing cell type such as (but not limited to) 293 cells. In a particular (but non-limiting) embodiment, the cell is a Vbac cell, which is a Vero cell stably transfected with the baculovirus GP64 protein carrying a portion of the cytoplasmic tail of RSV F protein (i.e., GP^{64/F}) (as disclosed in Oomens et al. (2004); US Patent Application Publication No. 2007/0104734; and U.S. Pat. No. 7,588,770; incorporated supra). In addition, the present disclosure also includes modified versions of any of the above cell lines. For example (but not by way of limitation), a Vbac cell line can be modified to include additional genetic modifications to GP^{64/F}, including one or more modifications to the GP64 portion of the sequence and/or one or more modifications to the F cytoplasmic tail portion. Alternatively, other cell lines may be modified to express GP64 or a variant thereof (such as, but not limited to, GP^{64/F}, a modified form thereof, or another modified form of GP64). These modified cell lines may be produced to improve on the growth characteristics of the cell line and/or to improve on the cell line's ability to produce virus, thereby enhancing production of the compositions of the present disclosure.

In still yet another aspect, mammalian cells or mammals are provided which include a recombinant virus as described or otherwise contemplated herein, or which include polynucleotide(s) that encode all of the various components of the recombinant virus, as described or otherwise contemplated herein.

In a particular (but non-limiting) embodiment, a mammalian cell of the present disclosure includes an expression cassette encoding a heterologous envelope protein comprising an ectodomain of a baculovirus transmembrane protein, and one or more expression vectors comprising or encoding the genome of an infection-defective or infection-attenuated mammalian virus as known in the art or as described or otherwise contemplated herein. The expression cassette can be stably or transiently transfected or transduced into the mammalian cell. In one example, the expression cassette is integrated into a chromosome of the mammalian cell. In another example, the mammalian cell is a Vero cell.

The infection-defective or -attenuated mammalian virus, when assembled in the mammalian cell, incorporates the heterologous envelope protein which affords the virus with improved infectivity and/or stability. In one example, the mammalian virus is a recombinant RSV, and the heterologous envelope protein comprises an ectodomain of baculovirus envelope GP64 protein. In another example, the recombinant RSV lacks one or more functional transmembrane proteins, such as SH, G, or F proteins. The recombinant RSV also includes a pre-fusion F protein variant as described or otherwise contemplated herein.

Furthermore, certain non-limiting embodiments of the present disclosure are directed to mammalian cells, such as (but not limited to) Vero cells, that are stably transfected or transduced with at least one expression cassette encoding a recombinant viral envelope protein (or variant or fragment thereof) and encoding a pre-fusion F protein variant. The viral envelope protein includes an ectodomain of a baculovirus transmembrane protein (e.g., the GP64 protein). The pre-fusion F protein variant is as described or otherwise contemplated herein. These recombinant RSVs are attenuated for cell-to-cell transmission.

Recombinant mammalian or vertebrate viruses other than pneumoviruses can be similarly prepared using the present disclosure. These viruses may have all of the advantageous properties possessed by the recombinant pneumoviruses that are disclosed or otherwise contemplated herein. For instance, these viruses can have improved stability of infectivity as compared to their wild-type counterparts. In addition, these viruses can be temperature sensitive and infectious but incapable of spreading between host cells. In one embodiment, these viruses include heterologous envelope proteins that comprise the ectodomain of a baculovirus transmembrane protein, such as (but not limited to) the GP64 protein or its functional equivalents, and a pre-fusion F protein variant. In another embodiment, these viruses are not recombinant lentiviruses, such as (but not limited to) those described in Kumar, et al. (*Human Gene Therapy* (2003) 14:67-77) and Ojala, et al. (*Biochem. Biophys. Res. Commun.* (2001) 284:777-784), the entire contents of each of which are hereby expressly incorporated herein by reference.

While certain non-limiting embodiments of the present disclosure are directed to viral production whereby the baculovirus GP64 protein/variant/fragment is supplied in trans to RSV from the cell line in which the virus is produced, it should be understood that the scope of the present disclosure also includes modifying the RSV genome to directly contain the gene encoding the GP64 protein/variant/fragment. In this manner, the RSV genome encodes both: (i) any of the RSV F protein variants/fragments described or otherwise contemplated herein; and (ii) any of the GP64 proteins/variants/fragments described or otherwise contemplated herein. Having GP64 encoded in the viral genome ensures strong GP64 expression levels, which improves virus production and virus temperature stability. When the GP64 protein is provided in cis, the RSV genome will need to be further modified so as to provide a self-limited safety component thereto (i.e., by inactivating one or more essential viral components). One non-limiting example of such a modification is to replace the M gene with that of the tet-transactivator gene; the resulting vaccine virus is then amplified in the laboratory by growing in M-expressing cells, whereby M is expressed via tet-responsive promoters. Another non-limiting example of such a modification is to replace the M gene with any suitable non-RSV gene, whereby the resulting vaccine virus is then amplified in the laboratory by growing in M-expressing cells, whereby M is expressed via inducible or constitutive promoters.

Further non-limiting embodiments of the present disclosure are directed to a pharmaceutical composition that includes a therapeutically effective amount of any of the recombinant, live, attenuated viruses described in detail herein above or otherwise contemplated herein. Alternatively and/or in addition thereto, the pharmaceutical composition may include any of the polynucleotides described or otherwise contemplated herein. In certain non-limiting embodiments, the pharmaceutical composition is capable of

eliciting an immune response against the virus or a component thereof in a mammal. In particular (but non-limiting) embodiments, the therapeutically effective amount of the recombinant, live, attenuated virus is further defined as an amount sufficient to induce an immune response protective against RSV infection. Thus, in a particular (but non-limiting) embodiment, the pharmaceutical composition may be an immunogenic composition, such as (but not limited to) a vaccine.

The pharmaceutical compositions or formulations disclosed or otherwise contemplated herein include one or more attenuated viruses as described herein, each of which is substantially purified and/or isolated, except that one or more of such viruses may be included in a single composition. In certain non-limiting embodiments, the pharmaceutical compositions also include a pharmaceutically acceptable carrier or excipient. Any carriers or excipients known in the art may be utilized in accordance with the present disclosure. For example (but not by way of limitation), a physiological compatible carrier (e.g., saline) that is compatible with maintaining the infectivity of the virus when administered (i.e., the viruses that are initially administered are capable of infecting one or more host cells), and compatible with the desired mode of administration, may be utilized as the pharmaceutically acceptable carrier in accordance with the present disclosure. In addition, the active ingredients may be mixed with excipients which are pharmaceutically acceptable and compatible with the active ingredients. Suitable excipients include, for example but not by way of limitation, water, saline, dextrose, glycerol, ethanol, and the like, or any combination thereof.

The preparation of such compositions for use as immunogenic compositions, such as (but not limited to) vaccines, is well known to those of skill in the art. Typically, such compositions are prepared either as liquid solutions or suspensions; however, solid forms such as (but not limited to) tablets, pills, powders, and the like are also contemplated. Solid forms suitable for solution in, or suspension in, liquids prior to administration may also be prepared. The preparation may also be emulsified. In addition, the pharmaceutical compositions disclosed or otherwise contemplated herein may contain minor amounts of auxiliary substances, such as (but not limited to) wetting or emulsifying agents, pH buffering agents, and the like, as well as any combination thereof. If it is desired to administer an oral form of the pharmaceutical composition, one or more of various thickeners, flavorings, diluents, emulsifiers, dispersing aids, binders, or the like, as well as any combination thereof, may be added. The pharmaceutical compositions of the present disclosure may contain any such additional ingredients so as to provide the composition in a form suitable for administration.

In addition, in certain non-limiting embodiments, the pharmaceutical composition contains at least one adjuvant. Suitable adjuvants are well known to those skilled in the art and include, without limitation, aluminum phosphate; at least one saponin complexed to at least one membrane protein antigen to produce immune stimulating complex(es) (ISCOMs); at least one plutonic polymer with mineral oil; killed mycobacteria in mineral oil; Freund's complete adjuvant; at least one bacterial product, such as (but not limited to) muramyl dipeptide (MDP) and lipopolysaccharide (LPS); monophoryl lipid A; QS 21; and polyphosphazene, as well as any component or derivative thereof, and as well as any combination thereof.

The recombinant, live, attenuated virus may be present in the pharmaceutical composition at any percentage of con-

centration that allows the virus to function as described or as otherwise contemplated herein. For example (but not by way of limitation), the virus may be present in a sufficient amount to function as an immunogenic composition. In certain particular (but non-limiting) embodiments, the recombinant, live, attenuated virus is present in the pharmaceutical composition at a percent concentration of about 0.001%, about 0.005%, about 0.01%, about 0.05%, about 0.1%, about 0.5%, about 1%, about 2%, about 3%, about 4%, about 5%, about 6%, about 7%, about 8%, about 9%, about 10%, about 15%, about 20%, about 25%, about 30%, about 35%, about 40%, about 45%, about 50%, about 55%, about 60%, about 65%, about 70%, about 75%, about 80%, about 85%, about 90%, about 95%, and about 99%. In addition, the scope of the presently disclosure also includes the presence of the virus in the pharmaceutical composition at any percent concentration that falls within any range formed from the combination of two values listed above (for example, a range of from about 1% to about 99%, a range of from about 2% to about 80%, a range of from about 3% to about 60%, a range of from about 10% to about 95%, a range of from about 40% to about 75%, etc.).

Likewise, a pharmaceutically acceptable carrier, excipient, and/or adjuvant may be present in the pharmaceutical composition at any percentage of concentration that allows the carrier/excipient/adjuvant to function as described or as otherwise contemplated herein. In certain particular (but non-limiting) embodiments, each of the pharmaceutically acceptable carrier, excipient, and adjuvant is present in the pharmaceutical composition at a percent concentration of about 0.001%, about 0.005%, about 0.01%, about 0.05%, about 0.1%, about 0.5%, about 1%, about 2%, about 3%, about 4%, about 5%, about 6%, about 7%, about 8%, about 9%, about 10%, about 15%, about 20%, about 25%, about 30%, about 35%, about 40%, about 45%, about 50%, about 55%, about 60%, about 65%, about 70%, about 75%, about 80%, about 85%, about 90%, about 95%, and about 99%. In addition, the scope of the presently disclosure also includes the presence of each of the pharmaceutically acceptable carrier, excipient, and adjuvant in the pharmaceutical composition at any percent concentration that falls within any range formed from the combination of two values listed above (for example, a range of from about 1% to about 99%, a range of from about 2% to about 80%, a range of from about 3% to about 60%, a range of from about 10% to about 95%, a range of from about 40% to about 75%, etc.).

The pharmaceutical compositions of the present disclosure may be administered by any of the many suitable means described herein and/or which are well known to those of skill in the art, including but not limited to: by injection, inhalation, oral, intravaginal, intranasal, rectal, or intradermal administration; by ingestion of a food or probiotic product containing the virus; by topical administration, such as (but not limited to) as eye drops, sprays, etc.; and the like. In one instance, the administration will be carried out by using an implant. In particular (but non-limiting) embodiments, the mode of administration is by injection and/or inhalation. One or more than one route of administration can be employed either simultaneously or partially or wholly sequentially, i.e., prime boost vaccine regimens are also contemplated. Such prime boost vaccine regimens typically involve repeated vaccine administration at preselected intervals, such as (but not limited to) at 1 month or 6 weeks of age then at 6 months, 1 year, and yearly thereafter, or at longer intervals, e.g., every 5 or 10 years, etc. Those of skill in the art are well acquainted with the planning, implemen-

tation, and assessment of such vaccine strategies, and therefore no further discussion thereof is required.

The pharmaceutical compositions may be administered in conjunction with other treatment modalities. In some embodiments, such modalities may include (but are not limited to) various substances that boost the immune system, various chemotherapeutic agents, vitamins, anti-allergy agents, anti-inflammatory agents, etc. In other embodiments, other antigenic agents (e.g., other vaccines or vaccinogens), may be advantageously administered or co-administered with the pharmaceutical compositions disclosed or otherwise contemplated herein. For example, in some cases it may be desirable to combine any of the recombinant virus pharmaceutical compositions disclosed or otherwise contemplated herein with other known vaccines which induce protective responses to other agents, particularly other childhood viruses or other infectious agents. The other vaccines may also be live attenuated virus vaccines, but this need not always be the case; such vaccines may be inactivated virus vaccines or vaccines against other etiological agents (e.g., bacteria). When multiple immunogenic compositions/vaccines are to be administered together, the immunogenic compositions/vaccine agents may be combined in a single pharmaceutical composition. Alternatively (and/or in addition thereto), the multiple immunogenic compositions/vaccines may be administered separately but over a short time interval, e.g., at a single visit at a doctor's office or clinic, etc.

In addition, the attenuated viruses disclosed or otherwise contemplated herein may also be further genetically engineered to contain and express genes encoding other antigens and/or agents of interest. The other agents of interest may, for example (but not by way of limitation), include a foreign epitope or other "tag" or "marker" of heterologous or foreign genetic material. Such agents are useful, for example, for distinguishing between wildtype and vaccine viral strains, such as (but not limited to) in the laboratory, in nature, in a host, etc. Basically, a genetically engineered recombinant virus disclosed or otherwise contemplated herein would carry the tag, but the wildtype virus would not. This technique can also be used to distinguish between viral vaccine strains, permitting the introduction of unique genetic tags into different batches or different iterations of recombinant virus strains, to detect pirated formulations, etc. In addition, the genetically engineered viruses may contain and express detectable markers (e.g., labeling or reporter groups such as (but not limited to) various peptides and/or proteins), for the purpose of tracing or visualizing the location of the viruses, cells infected by the viruses, or proteins translated from the viral genome; or for quantitating viruses or cells infected by virus, etc. Exemplary detectable markers include, but are not limited to: various fluorescent entities such as green fluorescent protein (GFP), blue, cyan, etc. fluorescent protein, and various derivatives thereof; other fluorescent proteins such as (but not limited to) dsRed, eqFP611, Dronpa, TagRFPs, KFP, EosFP, Dendra, IrisFP, etc.; other similar molecules known in the art; and any derivatives or combinations thereof.

Yet further non-limiting embodiments of the present disclosure are directed to a method of producing any of the recombinant, live, attenuated viruses described or otherwise contemplated herein. In one non-limiting embodiment of the method, a cell line is provided that expresses a baculovirus GP64 envelope glycoprotein or variant or fragment thereof; the cell line is also transfected with at least one polynucleotide encoding RSV virus, wherein the RSV virus comprises an RSV F protein variant or fragment thereof that comprises

at least one amino acid substitution compared to a native RSV F protein, wherein the at least one amino acid substitution stabilizes the RSV F protein variant or fragment thereof in a pre-fusion conformation. In addition, the cell line is cultured under conditions that allow for production of the recombinant, live, attenuated virus. In certain particular (but non-limiting) embodiments, the recombinant, live, attenuated virus is isolated away from the cultured cells. In a particular (but non-limiting) embodiment, the recombinant, live, attenuated virus is substantially purified.

In certain particular (but non-limiting) embodiments, the method includes: (i) recovering recombinant, live, attenuated virus comprising a polynucleotide encoding a respiratory syncytial virus (RSV) F protein variant or fragment thereof from cDNA using reverse genetics in the presence of a baculovirus GP64 envelope glycoprotein or variant or fragment thereof, wherein the RSV F protein variant or fragment thereof comprises at least one amino acid substitution compared to a native RSV F protein, wherein the at least one amino acid substitution stabilizes the RSV F protein variant or fragment thereof in a pre-fusion conformation; and (ii) amplifying the attenuated virus in a cell line expressing the baculovirus GP64 envelope glycoprotein or variant or fragment thereof.

Yet further non-limiting embodiments of the present disclosure are directed to a use of any of the recombinant, live, attenuated viruses disclosed or otherwise contemplated herein for the manufacture of a medication for eliciting an immune response in a mammal. In a particular (but non-limiting) embodiment, the medication so produced is a vaccine.

Additional non-limiting embodiments of the present disclosure are directed to a method of administering any of the pharmaceutical compositions disclosed or otherwise contemplated herein to a subject in need thereof. The amount of attenuated virus that is administered to a subject in need thereof varies according to many factors, e.g., the age, weight, overall health, gender, genetic history, history of allergies, prior infection, or vaccine history, etc. of the subject. The pharmaceutical compositions can be administered in a manner compatible with the dosage formulation and in such amounts as will be therapeutically effective (e.g., immunogenic and/or protective against infection with a wild type virus). The quantity to be administered depends on the subject to be treated, including, for example, the capacity of the immune system of the individual to synthesize antibodies, and, if needed, to produce a cell-mediated immune response. Precise amounts of active ingredient required to be administered depend on the judgment of the practitioner and may be monitored on a patient-by-patient basis. However, suitable dosage ranges are readily determinable by one skilled in the art and generally range from about 10^2 to about 10^9 plaque forming units (PFU) or more of virus per patient, more commonly, from about 10^4 to about 10^5 PFU of virus per patient. The dosage may also depend, without limitation, on the route of administration, the patient's state of health and weight, and the nature of the formulation.

Upon inoculation with the pharmaceutical/vaccine compositions disclosed or otherwise contemplated herein, the immune system of the host can respond to the vaccine by producing antibodies, both secretory and serum, specific for the epitope(s) included in or expressed by the recombinant viruses. As a result of the vaccination, the host can become partially or completely immune to infection by the pathogen(s) carrying the epitope(s) or to wild type counterparts of the attenuated viruses that were injected. Where the epitope(s) is associated with human RSV (HRSV), the host

may become resistant to developing RSV infection, or to developing moderate or severe RSV infection, particularly of the lower respiratory tract. The immune response may be innate or adaptive, and may be either cell-mediated or humoral. In a particular (but non-limiting) embodiment, the response is adaptive and leads to immunological memory. In a particular (but non-limiting) embodiment, the response is protective, i.e., the response prevents or at least lessens the impact of (e.g., avoids development of serious symptoms of) infection by other viruses with shared antigens and/or epitopes, e.g., other Pneumoviridae such as (but not limited to) wild type Pneumoviridae. Single or multiple administrations of the pharmaceutical composition disclosed or otherwise contemplated herein can be carried out. In neonates and infants, multiple administrations may be required to elicit sufficient levels of immunity. Administration can begin within the first month of life and continue at intervals throughout childhood, such as (but not limited to) at two months, six months, one year, and two years, as necessary to maintain sufficient levels of protection against the pathogen of interest. Similarly, adults who are particularly susceptible to repeated or serious infection by the pathogen of interest, such as (but not limited to) health care workers, day care workers, the elderly, individuals with compromised immune function, and individuals with compromised cardiopulmonary function, may require multiple immunizations to establish and/or maintain protective immune responses. Levels of induced immunity can be monitored by measuring amounts of neutralizing secretory and serum antibodies, and dosages adjusted and/or vaccinations repeated as necessary to maintain desired levels of protection.

Subjects who may be immunized using the formulations of pharmaceutical compositions disclosed or otherwise contemplated herein are usually mammals and are frequently humans, particularly human infants or children. However, this need not always be the case. Veterinary uses of the pharmaceutical compositions and methods disclosed or otherwise contemplated herein are also contemplated, e.g., for companion pets, or for animals that are of commercial value e.g., as a food source, or for any other animal, etc.

Further non-limiting embodiments of the present disclosure also include methods of eliciting an immune response to Pneumoviridae viruses in a subject or patient in need thereof. The method includes a step of administering any of the pharmaceutical compositions disclosed or otherwise contemplated herein to a subject. The method may include a step of identifying suitable recipients and/or of evaluating or monitoring the patient's reaction or response to administration of the composition. In some embodiments, the composition comprises a live, recombinant attenuated mammalian (e.g., human) RSV (as described herein above or otherwise contemplated herein), and the subject is a child, an immunocompromised individual, an elderly patient, and/or any patient at risk of being exposed to RSV and developing an RSV infection. The method may be a method of vaccinating such individuals against developing severe (or alternatively, moderate) lower respiratory tract disease, e.g., against developing bronchiolitis.

The recombinant live, attenuated viruses disclosed or otherwise contemplated herein can also be used in diagnostic applications. In one non-limiting embodiment, a method useful for detecting the presence or absence of an antibody specifically reactive with an epitope is provided. The method includes the steps of contacting a sample with the recombinant virus carrying the epitope, and detecting any binding between an antibody component in the sample and the recombinant virus. Examples of binding assays that are

suitable for this purpose include (but are not limited to) ELISA (enzyme-linked immunosorbent assay), RIA (radioimmunoassay), FACS (fluorescence-activated cell sorter), and any combinations thereof.

Yet further non-limiting embodiments of the present disclosure include a method of generating antibodies specific for RSV in a mammal, wherein the method includes introducing into the mammal any of the recombinant, live, attenuated viruses disclosed or otherwise contemplated herein (or any of the pharmaceutical compositions containing same, as disclosed or otherwise contemplated herein). Antibodies which specifically recognize one of the proteins or fragments thereof present in the virus may be used to detect production of the particular protein(s)/fragment(s), either in a laboratory setting (e.g., for research purposes) and/or to monitor infections established with the attenuated virus in a subject. Antibodies which specifically recognize the attenuated viruses disclosed or otherwise contemplated herein (both mono- and polyclonal) are also encompassed by the present disclosure. In some embodiments, antibody recognition is selective rather than specific. Antibodies may be polyclonal or monoclonal.

Certain additional non-limiting embodiments of the present disclosure are directed to a method of preventing or reducing the occurrence of respiratory syncytial virus infection in a mammal by administering any of the recombinant, live, attenuated viruses disclosed or otherwise contemplated herein (or any of the pharmaceutical compositions containing same) to a mammal. In addition, any of the adjuvants described or otherwise contemplated herein may be administered simultaneously or partially or fully sequentially with the virus (or pharmaceutical composition containing same). In certain non-limiting embodiments, the mammal is susceptible to infection with RSV.

EXAMPLES

Examples are provided hereinbelow. However, the present disclosure is to be understood to not be limited in its application to the specific experimentation, results, and laboratory procedures disclosed herein. Rather, the Examples are simply provided as one of various embodiments and are meant to be exemplary, not exhaustive.

Example 1

RSV is the most important viral respiratory pathogen of infancy and early childhood, and yet there is no approved vaccine. One of the main challenges thus far has been to achieve strong efficacy and safety within one vaccine. A trial in the 1960s using formalin-inactivated RSV vaccine (FI-RSV) failed to protect against RSC and even resulted in enhanced disease severity upon exposure to wild type RSV (termed vaccine-enhanced disease or VED). In RSV-naïve children, VED is also induced by many subunit approaches but not by live-attenuated vaccines. Live vaccines have additional advantages over non-replicating or subunit vaccines in that they induce immunologically-balanced, longer lasting protection, including (but not limited to) mucosal immunity (natural site of infection) if administered intranasally.

To enable live vaccines with stable attenuation phenotypes, self-limited (single-round) live RSV viruses have been developed based on ablation of essential genes (Matrix [M] or Fusion [F] protein) by providing functional replacements via a complementing production cell line. As a demonstration, by pseudotyping RSV with baculovirus

entry/exit protein GP64, it was possible to generate F-deleted yet infectious, single-round, RSV of high titer and with increased temperature stability (see, for example, US Patent Application Publication No. 2007/0104734 and U.S. Pat. No. 7,588,770, incorporated supra). Importantly, production of these GP64 pseudotypes is completely independent of F function. These viruses replicate their RNA genome at wildtype levels, generating abundant de novo viral antigens, but cannot spread beyond the initial site of infection. A similar experimental vaccine based on ablation of M induced robust immunity in an infant baboon model.

The spontaneous shift of the F protein from pre-fusion to post-fusion conformation during purification is believed to underlie the low levels of neutralizing anti-F antibodies induced by vaccine preparations, and probably also the loss of live RSV infectivity upon preparation and storage. Recent publications have shown that the F protein can be readily stabilized in the pre-fusion conformation through genetic changes, and when used as a protein vaccine, induced a higher proportion of neutralizing anti-F antibodies in vivo (see, for example, Kwong et al., incorporated supra). However, F is essential to RSV, and the genetically stabilized pre-fusion form (PreF) is no longer functional. A live vaccine expressing PreF in place of native F (to drive the immune response toward pre-fusion F without inducing VED in the RSV-naïve population) is therefore not viable. Thus, to extend the advantageous pre-fusion F concept to the RSV-naïve population, an F-independent production system is needed that allows generation of live RSV expressing PreF.

Thus, the present disclosure combines the pre-fusion F concept with the GP64 system previously developed by the inventor, as the GP64 system is F-independent and provides the tools to pursue these inventive concept(s).

Example 2

Oomens et al. (US Patent Application Publication No. 2007/0104734 and U.S. Pat. No. 7,588,770), incorporated supra) previously reported a baculovirus GP64 based complementation system that uniquely allows generation of infectious F-deleted or F-compromised viruses from cDNA in GP64-expressing cells. These GP64-pseudotyped viruses could be amplified to high titer and were significantly more temperature stable than wildtype RSV. Due to replacement of functional F with trans-complemented GP64, the viruses are infectious but self-limited and cannot spread beyond initially infected cells, thus constituting an attractive live-attenuated platform.

The present disclosure exploits this F-independent, GP64 complementation system to generate a live RSV which solely expresses a pre-fusion F protein variant. Replacing the native, functional F gene with a gene encoding a pre-fusion stabilized F in a live virus provides a novel combination of immunological benefits: it drives the anti-F response toward the pre-fusion F form, while also inducing a balanced response that includes cell-mediated immunity and avoidance of VED. In addition, a vaccine produced therefrom is single-round (self-limited) and thus cannot spread beyond the initially infected site, and is also more temperature-stable. Absence of the CT from preF also provides another safety advantage: if the live vaccine virus were to attempt to mutate preF in order to regain F function and virulence, absence of the CT will further prevent production of new progeny as the CT is required for virus assembly. The resulting immunogenic composition/vaccine thus has the

potential to exceed previous formulations in inducing a broadly efficacious yet safe immune response for the RSV-naïve target population.

In certain non-limiting embodiments, the present disclosure uses the F-independent system based on a cell line that provides baculovirus GP64 in trans to RSV, to generate live viruses that express a non-functional pre-fusion F protein variant. In this manner, not only will the humoral arm be activated, leading to anti-pre-fusion F antibodies, but the cellular arm will also be activated, leading to anti-pre-fusion F CD8⁺ lymphocytes, among others. Thus, contrary to protein-based vaccines, the live immunogenic compositions/vaccines of the present disclosure will elicit both a humoral and a cellular response. Because the immunogenic composition/vaccine is based on RSV itself, immunity will also be induced against all other RSV antigens, including (but not limited to) G. The F-independent system provides the baculovirus GP64 protein in trans, which results in a virus that is infectious but only for a single-round, thereby making the vaccine incapable of inadvertent spreading throughout the lung of a recipient, and thus safer.

Three versions of pre-fusion stabilized F protein variants were generated for use in accordance with the present disclosure, as shown in FIG. 1. These pre-fusion stabilized F protein variants are based on the previously described preF fusion protein variant DS-Cav-1 (see, for example, US 2015/0030622, US 2016/0031972, and US 2016/0046675, incorporated supra; and McLellan et al. (*Science* (2013) 342:592-598); the entire contents of which are expressly incorporated herein by reference). PreF^{ACT} is a membrane-anchored version that is expressed and anchored at the surface of infected cells; the amino acid sequence of preF^{ACT} is represented by SEQ ID NO:2. PreF^{SEC} is a secreted version that is secreted to the extracellular environment on infected cells; the amino acid sequence of preF^{SEC} is represented by SEQ ID NO:3. PreF^{SEC/tag} is similar to PreF^{SEC} but contains an epitope tag for easy identification and detection; the amino acid sequence of preF^{SEC/tag} is represented by SEQ ID NO:4.

RSV viruses were then engineered with one of the three pre-fusion stabilized F variants of FIG. 1 inserted at either the 8th or 6th genome position, as shown in FIG. 2. Panel B of FIG. 2 depicts RSV genomes with variants of pre-fusion stabilized F at the 8th genome position, while Panel C of FIG. 2 depicts RSV genomes with variants of pre-fusion stabilized F at the 6th genome position. The 6th genome position was more highly expressed than the 8th genome position, to enhance the level of pre-fusion F. In addition, all of these viruses also contained a GFP (Green Fluorescent Protein) marker gene for tracking and assay purposes. However, it will be understood that the presence of GFP was simply for experimental purposes; GFP is not required to be present in the viruses of the present disclosure and can be removed if necessary. All of these viruses also lacked expression of the secreted G protein (indicated as Gmem), which is a known virulence factor. These vaccine viruses have been successfully generated, and stocks for each have also been generated with titers over 10⁷ plaque-forming units per ml.

Successful expression of pre-fusion stabilized F protein variants from the engineered viruses generated as in FIG. 2 was verified, as shown in FIG. 3. Cells infected by virus RSV8-preF^{ACT} were incubated with anti-F and anti-G antibodies at 26 hours post-infection, or mock-infected as a negative control, and subjected to ELISA. Three antibodies (provided by J S McLellan, The University of Texas at Austin) were used to detect the presence of F protein. The

first antibody, Motavizumab (mota), detects both the pre-fusion and post-fusion conformation of F, while the second and third antibodies, D25 and 14402, are known to detect a different epitope specific only for the pre-fusion conformation of F (site Ø and site V). In addition, the G protein was detected at similar levels.

Therefore, as can be seen in FIGS. 4 and 5, abundant levels of pre-fusion F were expressed at the surface of vaccine-virus infected cells. In addition, Viruses RSV8-preF^{SEC} and RSV8-preF^{SEC/tag} have been similarly examined and were also demonstrated to express pre-fusion F.

In addition, viruses with pre-fusion F variants at position 6 will generate higher levels of pre-fusion F.

It was noted that pre-fusion F protein variants that contained the cytoplasmic tail of the F protein do not express at the cell surface as well as the wildtype F protein. However, when the cytoplasmic tail was removed (such as (but not limited to) in virus RSV-preF^{ACT} described in FIGS. 1-3), surface expression was improved to an expression level similar to that observed for wildtype F protein. Therefore, while the scope of the present disclosure includes the use of F protein variants both with and without cytoplasmic tails, the absence of the cytoplasmic tail can improve surface expression of the pre-fusion F protein variant and can thus assist with inducing immunity against the pre-fusion F conformation.

Example 3

Removal of the cytoplasmic tail (CT) strongly improved cell-surface expression of pre-fusion F. HEp2 cells were transfected with the indicated F expressing plasmids. The F open reading frames were codon-optimized, as native F sequences express poorly in transfected cells. To each well, a plasmid expressing NGFR-myc was added as a transfection control (NGFR-myc is expressed at the cell surface). At 46 hours post-transfection, transfected cells were incubated with various F antibodies or myc antibody as a control, and relative F surface levels were detected using standard ELISA.

As shown in FIG. 3, full-length F and preF were detected at the cell surface equally and at low levels. However, removal of the cytoplasmic tail (CT) from preF (preF^{ACT}) led to a strong increase in surface expression. As expected, surface expressed preF was recognized by pre-fusion-specific site Ø and V antibodies but not by a post-F specific antibody, demonstrating that preF^{ACT} is in the pre-fusion conformation.

The vaccine candidate RSV6-preF^{ACT} induced high surface levels of pre-fusion-F and G. HEp2 cells were infected with the indicated viruses. At 26 hours post-infection, infected cells were incubated with F, G, or N antibodies, and relative F and G surface levels were determined using ELISA (the N protein is an indicator of viral genomic replication and is shown for normalization purposes; to detect N, cells are detergent-permeabilized).

As can be seen in FIG. 5, RSV6-preF^{ACT} induced higher surface expression of pre-fusion F and G than a recombinant wild type (WT) virus. PreF is recognized by pre-fusion-specific site Ø and V antibodies but not by a post-F specific antibody, demonstrating that preF^{ACT} is in the pre-fusion conformation. As expected, RSV6-preF^{SEC} expresses G but not preF at the plasma membrane.

In addition, vaccine candidate RSV6-preF^{SEC/tag} secreted high levels of pre-fusion F. HEp2 cells were infected with the indicated viruses. At 36 hours post-infection, supernatants of infected cells were harvested and incubated on ELISA plates

coated with the anti-tag antibodies for 1 hour. Bound preF was then detected by ELISA using D25 and motavizumab as primary antibodies.

As shown in FIG. 6, RSV6-preF^{SEC/tag} secreted high levels of prefusion F, which was recognized by prefusion-specific antibody D25. As expected, RSV6-preF^{ACT} did not secrete any prefusion F protein into the supernatant. Strong but slightly lower levels of prefusion F were detected at 24 hours post-infection.

PreF expressing single cycle RSV was also shown to induce high levels of anti-RSV antibodies in vivo. 96 well plates were coated with preF+G by infecting HEp-2 cells with RSV6-preF^{ACT}. At 26 hours post-infection, preF and G proteins were present at the cell surface in conformationally accurate (native) form. Pooled sera (n=3, collected at 3 weeks post-boost) from mice vaccinated prime/boost with RSV6-preF^{ACT} or RecWT virus were incubated on the coated ELISA plates, and antibody levels were determined using ELISA.

As shown in FIG. 7, prime/boost vaccination with RSV6-preF^{ACT} induced anti-RSV antibody levels similar to a wildtype virus, despite being limited to a single cycle of replication. (Note: The shown preF vaccine was codon-optimized; codon-optimized and non-codon-optimized preF vaccines have been tested and gave similar results in mice). A low dose (0.5 million PFU/vaccination) of RSV6-preF^{ACT} induced equal levels of antibodies as a high dose (1 million PFU/vaccination).

Example 4

In this Example, different preF-based single cycle RSV vaccines were constructed, and FIG. 8 graphically depicts a schematic overview of five examples of different preF-based single cycle RSV vaccines constructed in accordance with the present disclosure. In addition to RSV6-preF^{ACT}, two types of preF based vaccine candidates were generated. First, vaccines were generated in which known viral virulence factors NS1 or NS2 have been moved to downstream positions to downregulate their expression levels. NS1 and NS2 are known to block the host interferon response, and downregulating their expression is expected to alter and improve the quality and longevity of the immune response. As such, NS1 or NS2 were separately moved to the 8th genome position. Second, vaccines were generated in which preF^{ACT} was moved to the 1st or 2nd genome position, for enhanced expression. The specific vaccine candidates generated are shown in FIG. 8 and include: First panel, RSV6-preF^{ACT}; second panel, RSV6-preF^{ACT}-NS1low; third panel, RSV6-preF^{ACT}-NS2low; fourth panel, RSV1-preF^{ACT}-NS1low; fifth panel, RSV2-preF^{ACT}-NS2low.

RSV6-preF^{ACT} and RSV1-preF^{ACT}-NS1low have been examined in vitro and in vivo, as shown in FIGS. 9-12 and described in detail herein below.

FIG. 9 graphically depicts that different preF RSV vaccines induced high levels of preF and G protein at the cell surface. HEp-2 cells were infected with viruses RSV6-preF^{ACT} and RSV1-preF^{ACT}-NS1low. At 26 hours post-infection, infected cells were incubated with anti-preF and anti-G antibodies, which were subsequently detected by standard ELISA method. Anti-N antibody was also used as an indicator for viral genomic replication (N encapsulates the viral genome), and preF and G antibody levels were determined without and with N level-based normalization.

Judged by N level, virus RSV1-preF^{ACT}-NS1low replicated to lower levels than RSV6-preF^{ACT}. This matches the observation that RSV1-preF^{ACT}-NS1low spreads a little

more slowly through a cell culture, as seen by GFP expression. This is also consistent with the literature and with NS1 having both anti-immune and pro-viral functions. Judged by normalized N levels, on a per virus basis, the two viruses generated very similar levels of preF and G proteins. This indicates that moving preF^{ACT} to the first genome position did not raise preF levels, counter to expectations.

Next, the two viruses were examined in vivo. As can be seen in FIG. 10, different preF RSV vaccines induced high levels of preF-specific and G-specific antibodies. 96 well plates were coated with preF+G or preF alone as follows: HEp-2 cells were infected with RSV6-preF^{ACT} or RSV6-preF^{ACT}-AG (G gene removed). At 26 hours post-infection, either preF+G or preF alone were present at the cell surface in conformationally accurate (native) form. Pooled sera (n=3, collected at 3 weeks post-boost) from mice vaccinated prime/boost with RSV6-preF^{ACT} and RSV1-preF^{ACT}-NS1low were incubated on the coated ELISA plates (preF+G on the left; preF alone on the right), and antibody levels were determined using standard ELISA method. Anti-G Ab L9 was used to verify the absence of G protein in the preF-alone ELISA.

Prime/boost vaccination using two distinct single cycle preF vaccines (RSV6-preF^{ACT} and RSV1-preF^{ACT}-NS1low) induced both anti-G and anti-preF antibodies, despite being limited to a single cycle of replication. Whereas RSV1-preF^{ACT}-NS1low expressed in cell culture overall lower preF and G levels than RSV1-preF^{ACT}, it induced equal levels of preF antibodies in vivo and moderately high levels of anti-G antibodies than RSV1-preF^{ACT}, indicative of potential vaccine advantages. Lower NS1 levels may also increase immune memory.

The two distinct preF RSV vaccines were also shown to induce higher neutralizing antibody activity than a wildtype virus, despite being safe, single-cycle vaccines. Neutralizing anti-F antibodies from mice vaccinated with RSV6-preF^{ACT}, RSV1-preF^{ACT}-NS1low, or rec WT (ELISA) were tested. Three-fold dilutions of pooled mice sera (3 mice per pool; sera harvested 3 weeks post-boost) were incubated with 500 PFU (FIG. 11) or 250 PFU (FIG. 12) of virus RSV-AG-HRP, which lacks the G protein (allowing detection of F-specific neutralization) and contains the HRP gene for detection. After a one hour incubation, virus-antibody suspensions were incubated on HEp-2 cells for 1.5 hours. Inoculum was removed and cells incubated for a total of 48 hours post-infection (hpi). At 48 hpi, medium was replaced with standard ELISA substrate, and OD₄₅₀ was determined after 30 minutes as a measure of virus replication.

As shown in FIGS. 11 and 12, all viruses induced F-specific virus-neutralizing antibodies. RSV6-preF^{ACT} and RSV1-preF^{ACT}-NS1low induced slightly higher levels of F-specific neutralization than rec WT virus, despite being limited to a single cycle of virus replication. Neutralizing serum antibodies are a strong predictor of in vivo protection potential. Because recWT virus was previously shown to protect mice from RSV challenge, the novel vaccines of the present disclosure will protect animals in vivo and will also be safe, since they only replicate for a single round.

Thus, in accordance with the present disclosure, there have been provided compositions, as well as methods of producing and using same, which fully satisfy the objectives and advantages set forth hereinabove. Although the present disclosure has been described in conjunction with the specific drawings, experimentation, results, and language set forth hereinabove, it is evident that many alternatives, modifications, and variations will be apparent to those skilled in the art. Accordingly, it is intended to embrace all such alternatives, modifications, and variations that fall within the spirit and broad scope of the present disclosure.

SEQUENCE LISTING

<160> NUMBER OF SEQ ID NOS: 18

<210> SEQ ID NO 1

<211> LENGTH: 574

<212> TYPE: PRT

<213> ORGANISM: respiratory syncytial virus

<400> SEQUENCE: 1

Met Glu Leu Leu Ile His Arg Ser Ser Ala Ile Phe Leu Thr Leu Ala
 1 5 10 15

Ile Asn Ala Leu Tyr Leu Thr Ser Ser Gln Asn Ile Thr Glu Glu Phe
 20 25 30

Tyr Gln Ser Thr Cys Ser Ala Val Ser Arg Gly Tyr Leu Ser Ala Leu
 35 40 45

Arg Thr Gly Trp Tyr Thr Ser Val Ile Thr Ile Glu Leu Ser Asn Ile
 50 55 60

Lys Glu Thr Lys Cys Asn Gly Thr Asp Thr Lys Val Lys Leu Ile Lys
 65 70 75 80

Gln Glu Leu Asp Lys Tyr Lys Asn Ala Val Thr Glu Leu Gln Leu Leu
 85 90 95

Met Gln Asn Thr Pro Ala Val Asn Asn Arg Ala Arg Arg Glu Ala Pro
 100 105 110

Gln Tyr Met Asn Tyr Thr Ile Asn Thr Thr Lys Asn Leu Asn Val Ser
 115 120 125

Ile Ser Lys Lys Arg Lys Arg Arg Phe Leu Gly Phe Leu Leu Gly Val
 130 135 140

Gly Ser Ala Ile Ala Ser Gly Ile Ala Val Ser Lys Val Leu His Leu
 145 150 155 160

Glu Gly Glu Val Asn Lys Ile Lys Asn Ala Leu Gln Leu Thr Asn Lys
 165 170 175

Ala Val Val Ser Leu Ser Asn Gly Val Ser Val Leu Thr Ser Lys Val
 180 185 190

Leu Asp Leu Lys Asn Tyr Ile Asn Asn Gln Leu Leu Pro Ile Val Asn
 195 200 205

Gln Gln Ser Cys Arg Ile Ser Asn Ile Glu Thr Val Ile Glu Phe Gln
 210 215 220

Gln Lys Asn Ser Arg Leu Leu Glu Ile Thr Arg Glu Phe Ser Val Asn
 225 230 235 240

Ala Gly Val Thr Thr Pro Leu Ser Thr Tyr Met Leu Thr Asn Ser Glu
 245 250 255

Leu Leu Ser Leu Ile Asn Asp Met Pro Ile Thr Asn Asp Gln Lys Lys
 260 265 270

Leu Met Ser Ser Asn Val Gln Ile Val Arg Gln Gln Ser Tyr Ser Ile
 275 280 285

Met Ser Ile Ile Lys Glu Glu Val Leu Ala Tyr Val Val Gln Leu Pro
 290 295 300

Ile Tyr Gly Val Ile Asp Thr Pro Cys Trp Lys Leu His Thr Ser Pro
 305 310 315 320

Leu Cys Thr Thr Asn Ile Lys Glu Gly Ser Asn Ile Cys Leu Thr Arg
 325 330 335

Thr Asp Arg Gly Trp Tyr Cys Asp Asn Ala Gly Ser Val Ser Phe Phe
 340 345 350

Pro Gln Ala Asp Thr Cys Lys Val Gln Ser Asn Arg Val Phe Cys Asp
 355 360 365

-continued

Thr Met Asn Ser Leu Thr Leu Pro Ser Glu Val Ser Leu Cys Asn Thr
 370 375 380
 Asp Ile Phe Asn Ser Lys Tyr Asp Cys Lys Ile Met Thr Ser Lys Thr
 385 390 395 400
 Asp Ile Ser Ser Ser Val Ile Thr Ser Leu Gly Ala Ile Val Ser Cys
 405 410 415
 Tyr Gly Lys Thr Lys Cys Thr Ala Ser Asn Lys Asn Arg Gly Ile Ile
 420 425 430
 Lys Thr Phe Ser Asn Gly Cys Asp Tyr Val Ser Asn Lys Gly Val Asp
 435 440 445
 Thr Val Ser Val Gly Asn Thr Leu Tyr Tyr Val Asn Lys Leu Glu Gly
 450 455 460
 Lys Asn Leu Tyr Val Lys Gly Glu Pro Ile Ile Asn Tyr Tyr Asp Pro
 465 470 475 480
 Leu Val Phe Pro Ser Asp Glu Phe Asp Ala Ser Ile Ser Gln Val Asn
 485 490 495
 Glu Lys Ile Asn Gln Ser Leu Ala Phe Ile Arg Arg Ser Asp Glu Leu
 500 505 510
 Leu His Asn Val Asn Thr Gly Lys Ser Thr Thr Asn Ile Met Ile Thr
 515 520 525
 Ala Ile Ile Ile Val Ile Ile Val Val Leu Leu Ser Leu Ile Ala Ile
 530 535 540
 Gly Leu Leu Leu Tyr Cys Lys Ala Lys Asn Thr Pro Val Thr Leu Ser
 545 550 555 560
 Lys Asp Gln Leu Ser Gly Ile Asn Asn Ile Ala Phe Ser Lys
 565 570

<210> SEQ ID NO 2

<211> LENGTH: 553

<212> TYPE: PRT

<213> ORGANISM: Artificial Sequence

<220> FEATURE:

<223> OTHER INFORMATION: Variant of Respiratory Syncytial Virus (RSV) F protein

<400> SEQUENCE: 2

Met Glu Leu Leu Ile His Arg Ser Ser Ala Ile Phe Leu Thr Leu Ala
 1 5 10 15
 Ile Asn Ala Leu Tyr Leu Thr Ser Ser Gln Asn Ile Thr Glu Glu Phe
 20 25 30
 Tyr Gln Ser Thr Cys Ser Ala Val Ser Arg Gly Tyr Leu Ser Ala Leu
 35 40 45
 Arg Thr Gly Trp Tyr Thr Ser Val Ile Thr Ile Glu Leu Ser Asn Ile
 50 55 60
 Lys Glu Thr Lys Cys Asn Gly Thr Asp Thr Lys Val Lys Leu Ile Lys
 65 70 75 80
 Gln Glu Leu Asp Lys Tyr Lys Asn Ala Val Thr Glu Leu Gln Leu Leu
 85 90 95
 Met Gln Asn Thr Pro Ala Val Asn Asn Arg Ala Arg Arg Glu Ala Pro
 100 105 110
 Gln Tyr Met Asn Tyr Thr Ile Asn Thr Thr Lys Asn Leu Asn Val Ser
 115 120 125
 Ile Ser Lys Lys Arg Lys Arg Arg Phe Leu Gly Phe Leu Leu Gly Val
 130 135 140
 Gly Ser Ala Ile Ala Ser Gly Ile Ala Val Cys Lys Val Leu His Leu
 145 150 155 160

-continued

Glu Gly Glu Val Asn Lys Ile Lys Asn Ala Leu Gln Leu Thr Asn Lys
 165 170 175

Ala Val Val Ser Leu Ser Asn Gly Val Ser Val Leu Thr Phe Lys Val
 180 185 190

Leu Asp Leu Lys Asn Tyr Ile Asn Asn Gln Leu Leu Pro Ile Leu Asn
 195 200 205

Gln Gln Ser Cys Arg Ile Ser Asn Ile Glu Thr Val Ile Glu Phe Gln
 210 215 220

Gln Lys Asn Ser Arg Leu Leu Glu Ile Thr Arg Glu Phe Ser Val Asn
 225 230 235 240

Ala Gly Val Thr Thr Pro Leu Ser Thr Tyr Met Leu Thr Asn Ser Glu
 245 250 255

Leu Leu Ser Leu Ile Asn Asp Met Pro Ile Thr Asn Asp Gln Lys Lys
 260 265 270

Leu Met Ser Ser Asn Val Gln Ile Val Arg Gln Gln Ser Tyr Ser Ile
 275 280 285

Met Cys Ile Ile Lys Glu Glu Val Leu Ala Tyr Val Val Gln Leu Pro
 290 295 300

Ile Tyr Gly Val Ile Asp Thr Pro Cys Trp Lys Leu His Thr Ser Pro
 305 310 315 320

Leu Cys Thr Thr Asn Ile Lys Glu Gly Ser Asn Ile Cys Leu Thr Arg
 325 330 335

Thr Asp Arg Gly Trp Tyr Cys Asp Asn Ala Gly Ser Val Ser Phe Phe
 340 345 350

Pro Gln Ala Asp Thr Cys Lys Val Gln Ser Asn Arg Val Phe Cys Asp
 355 360 365

Thr Met Asn Ser Leu Thr Leu Pro Ser Glu Val Ser Leu Cys Asn Thr
 370 375 380

Asp Ile Phe Asn Ser Lys Tyr Asp Cys Lys Ile Met Thr Ser Lys Thr
 385 390 395 400

Asp Ile Ser Ser Ser Val Ile Thr Ser Leu Gly Ala Ile Val Ser Cys
 405 410 415

Tyr Gly Lys Thr Lys Cys Thr Ala Ser Asn Lys Asn Arg Gly Ile Ile
 420 425 430

Lys Thr Phe Ser Asn Gly Cys Asp Tyr Val Ser Asn Lys Gly Val Asp
 435 440 445

Thr Val Ser Val Gly Asn Thr Leu Tyr Tyr Val Asn Lys Leu Glu Gly
 450 455 460

Lys Asn Leu Tyr Val Lys Gly Glu Pro Ile Ile Asn Tyr Tyr Asp Pro
 465 470 475 480

Leu Val Phe Pro Ser Asp Glu Phe Asp Ala Ser Ile Ser Gln Val Asn
 485 490 495

Glu Lys Ile Asn Gln Ser Leu Ala Phe Ile Arg Arg Ser Asp Glu Leu
 500 505 510

Leu His Asn Val Asn Thr Gly Lys Ser Thr Thr Asn Ile Met Ile Thr
 515 520 525

Ala Ile Ile Ile Val Ile Ile Val Val Leu Leu Ser Leu Ile Ala Ile
 530 535 540

Gly Leu Leu Leu Tyr Cys Lys Ala Lys
 545 550

-continued

```

<212> TYPE: PRT
<213> ORGANISM: Artificial Sequence
<220> FEATURE:
<223> OTHER INFORMATION: Variant of Respiratory Syncytial Virus (RSV) F
protein

<400> SEQUENCE: 3

Met Glu Leu Leu Ile His Arg Ser Ser Ala Ile Phe Leu Thr Leu Ala
1          5          10          15
Ile Asn Ala Leu Tyr Leu Thr Ser Ser Gln Asn Ile Thr Glu Glu Phe
20          25          30
Tyr Gln Ser Thr Cys Ser Ala Val Ser Arg Gly Tyr Leu Ser Ala Leu
35          40          45
Arg Thr Gly Trp Tyr Thr Ser Val Ile Thr Ile Glu Leu Ser Asn Ile
50          55          60
Lys Glu Thr Lys Cys Asn Gly Thr Asp Thr Lys Val Lys Leu Ile Lys
65          70          75          80
Gln Glu Leu Asp Lys Tyr Lys Asn Ala Val Thr Glu Leu Gln Leu Leu
85          90          95
Met Gln Asn Thr Pro Ala Val Asn Asn Arg Ala Arg Arg Glu Ala Pro
100         105         110
Gln Tyr Met Asn Tyr Thr Ile Asn Thr Thr Lys Asn Leu Asn Val Ser
115         120         125
Ile Ser Lys Lys Arg Lys Arg Arg Phe Leu Gly Phe Leu Leu Gly Val
130         135         140
Gly Ser Ala Ile Ala Ser Gly Ile Ala Val Cys Lys Val Leu His Leu
145         150         155         160
Glu Gly Glu Val Asn Lys Ile Lys Asn Ala Leu Gln Leu Thr Asn Lys
165         170         175
Ala Val Val Ser Leu Ser Asn Gly Val Ser Val Leu Thr Phe Lys Val
180         185         190
Leu Asp Leu Lys Asn Tyr Ile Asn Asn Gln Leu Leu Pro Ile Leu Asn
195         200         205
Gln Gln Ser Cys Arg Ile Ser Asn Ile Glu Thr Val Ile Glu Phe Gln
210         215         220
Gln Lys Asn Ser Arg Leu Leu Glu Ile Thr Arg Glu Phe Ser Val Asn
225         230         235         240
Ala Gly Val Thr Thr Pro Leu Ser Thr Tyr Met Leu Thr Asn Ser Glu
245         250         255
Leu Leu Ser Leu Ile Asn Asp Met Pro Ile Thr Asn Asp Gln Lys Lys
260         265         270
Leu Met Ser Ser Asn Val Gln Ile Val Arg Gln Gln Ser Tyr Ser Ile
275         280         285
Met Cys Ile Ile Lys Glu Glu Val Leu Ala Tyr Val Val Gln Leu Pro
290         295         300
Ile Tyr Gly Val Ile Asp Thr Pro Cys Trp Lys Leu His Thr Ser Pro
305         310         315         320
Leu Cys Thr Thr Asn Ile Lys Glu Gly Ser Asn Ile Cys Leu Thr Arg
325         330         335
Thr Asp Arg Gly Trp Tyr Cys Asp Asn Ala Gly Ser Val Ser Phe Phe
340         345         350
Pro Gln Ala Asp Thr Cys Lys Val Gln Ser Asn Arg Val Phe Cys Asp
355         360         365
Thr Met Asn Ser Leu Thr Leu Pro Ser Glu Val Ser Leu Cys Asn Thr
370         375         380

```

-continued

Asp Ile Phe Asn Ser Lys Tyr Asp Cys Lys Ile Met Thr Ser Lys Thr
 385 390 395 400

Asp Ile Ser Ser Ser Val Ile Thr Ser Leu Gly Ala Ile Val Ser Cys
 405 410 415

Tyr Gly Lys Thr Lys Cys Thr Ala Ser Asn Lys Asn Arg Gly Ile Ile
 420 425 430

Lys Thr Phe Ser Asn Gly Cys Asp Tyr Val Ser Asn Lys Gly Val Asp
 435 440 445

Thr Val Ser Val Gly Asn Thr Leu Tyr Tyr Val Asn Lys Leu Glu Gly
 450 455 460

Lys Asn Leu Tyr Val Lys Gly Glu Pro Ile Ile Asn Tyr Tyr Asp Pro
 465 470 475 480

Leu Val Phe Pro Ser Asp Glu Phe Asp Ala Ser Ile Ser Gln Val Asn
 485 490 495

Glu Lys Ile Asn Gln Ser Leu Ala Phe Ile Arg Arg Ser Asp Glu Leu
 500 505 510

Leu

<210> SEQ ID NO 4
 <211> LENGTH: 522
 <212> TYPE: PRT
 <213> ORGANISM: Artificial Sequence
 <220> FEATURE:
 <223> OTHER INFORMATION: Variant of Respiratory Syncytial Virus (RSV) F
 protein

<400> SEQUENCE: 4

Met Glu Leu Leu Ile His Arg Ser Ser Ala Ile Phe Leu Thr Leu Ala
 1 5 10 15

Ile Asn Ala Leu Tyr Leu Thr Ser Ser Gln Asn Ile Thr Glu Glu Phe
 20 25 30

Tyr Gln Ser Thr Cys Ser Ala Val Ser Arg Gly Tyr Leu Ser Ala Leu
 35 40 45

Arg Thr Gly Trp Tyr Thr Ser Val Ile Thr Ile Glu Leu Ser Asn Ile
 50 55 60

Lys Glu Thr Lys Cys Asn Gly Thr Asp Thr Lys Val Lys Leu Ile Lys
 65 70 75 80

Gln Glu Leu Asp Lys Tyr Lys Asn Ala Val Thr Glu Leu Gln Leu Leu
 85 90 95

Met Gln Asn Thr Pro Ala Val Asn Asn Arg Ala Arg Arg Glu Ala Pro
 100 105 110

Gln Tyr Met Asn Tyr Thr Ile Asn Thr Thr Lys Asn Leu Asn Val Ser
 115 120 125

Ile Ser Lys Lys Arg Lys Arg Arg Phe Leu Gly Phe Leu Leu Gly Val
 130 135 140

Gly Ser Ala Ile Ala Ser Gly Ile Ala Val Cys Lys Val Leu His Leu
 145 150 155 160

Glu Gly Glu Val Asn Lys Ile Lys Asn Ala Leu Gln Leu Thr Asn Lys
 165 170 175

Ala Val Val Ser Leu Ser Asn Gly Val Ser Val Leu Thr Phe Lys Val
 180 185 190

Leu Asp Leu Lys Asn Tyr Ile Asn Asn Gln Leu Leu Pro Ile Leu Asn
 195 200 205

Gln Gln Ser Cys Arg Ile Ser Asn Ile Glu Thr Val Ile Glu Phe Gln
 210 215 220

-continued

Gln Lys Asn Ser Arg Leu Leu Glu Ile Thr Arg Glu Phe Ser Val Asn
 225 230 235 240
 Ala Gly Val Thr Thr Pro Leu Ser Thr Tyr Met Leu Thr Asn Ser Glu
 245 250 255
 Leu Leu Ser Leu Ile Asn Asp Met Pro Ile Thr Asn Asp Gln Lys Lys
 260 265 270
 Leu Met Ser Ser Asn Val Gln Ile Val Arg Gln Gln Ser Tyr Ser Ile
 275 280 285
 Met Cys Ile Ile Lys Glu Glu Val Leu Ala Tyr Val Val Gln Leu Pro
 290 295 300
 Ile Tyr Gly Val Ile Asp Thr Pro Cys Trp Lys Leu His Thr Ser Pro
 305 310 315 320
 Leu Cys Thr Thr Asn Ile Lys Glu Gly Ser Asn Ile Cys Leu Thr Arg
 325 330 335
 Thr Asp Arg Gly Trp Tyr Cys Asp Asn Ala Gly Ser Val Ser Phe Phe
 340 345 350
 Pro Gln Ala Asp Thr Cys Lys Val Gln Ser Asn Arg Val Phe Cys Asp
 355 360 365
 Thr Met Asn Ser Leu Thr Leu Pro Ser Glu Val Ser Leu Cys Asn Thr
 370 375 380
 Asp Ile Phe Asn Ser Lys Tyr Asp Cys Lys Ile Met Thr Ser Lys Thr
 385 390 395 400
 Asp Ile Ser Ser Ser Val Ile Thr Ser Leu Gly Ala Ile Val Ser Cys
 405 410 415
 Tyr Gly Lys Thr Lys Cys Thr Ala Ser Asn Lys Asn Arg Gly Ile Ile
 420 425 430
 Lys Thr Phe Ser Asn Gly Cys Asp Tyr Val Ser Asn Lys Gly Val Asp
 435 440 445
 Thr Val Ser Val Gly Asn Thr Leu Tyr Tyr Val Asn Lys Leu Glu Gly
 450 455 460
 Lys Asn Leu Tyr Val Lys Gly Glu Pro Ile Ile Asn Tyr Tyr Asp Pro
 465 470 475 480
 Leu Val Phe Pro Ser Asp Glu Phe Asp Ala Ser Ile Ser Gln Val Asn
 485 490 495
 Glu Lys Ile Asn Gln Ser Leu Ala Phe Ile Arg Arg Ser Asp Glu Leu
 500 505 510
 Leu Ser Trp Lys Asp Ala Ser Gly Trp Ser
 515 520

<210> SEQ ID NO 5
 <211> LENGTH: 1665
 <212> TYPE: DNA
 <213> ORGANISM: Artificial Sequence
 <220> FEATURE:
 <223> OTHER INFORMATION: Codon-optimized sequence encoding RSV F protein
 variant of SEQ ID NO:2
 <400> SEQUENCE: 5

atggagctgc tgatcctgaa ggccaacgcc atcaccacca tcctgaccgc cgtgaccttc 60
 tgcttcgccca gcgccagaa catcaccgag gagttctacc agagcacctg cagcgccgtg 120
 agcaagggtt acctgagcgc cctgcgcacc ggctggtaca ccagcgtgat caccatcgag 180
 ctgagcaaca tcaaggagaa caagtgaac ggcaccgacg ccaaagtga gctgatcaag 240
 caagagctgg acaagtacaa gaacgcccgtg accgagctgc agctgctgac ccagagcacc 300

-continued

```

cccgccacca acaaccgggc cgcgcgcgag ctgccccgct tcatgaacta caccctgaac 360
aacgccaaga agaccaacgt gaccctgagc aagaagcgca agcgccgctt cctgggcttc 420
ctgctgggcg tgggcagcgc catcgccagc ggcgtggccg tgtgtaaagt gctgcacctg 480
gagggcgaag tgaacaagat caagagcgcc ctgctgagca ccaacaaggc cgtggtgagc 540
ctgagcaacg gcgtgagcgt gctgaccttc aaagtgctgg acctgaagaa ctacatcgac 600
aagcagctgc tgcccatcct caacaagcag agctgcagca tcagcaacat cgagaccgtg 660
atcgagtcc agcagaagaa caaccgctg ctggagatca cccgcgagtt cagcgtgaac 720
gccggcgtga ccaccccgct gagcacctac atgtgacca acagcgagct gctgagcctg 780
atcaacgaca tgcccatcac caacgaccag aagaagtga tgagcaacaa cgtgcagatc 840
gtgcccagc agagctacag catcatgtgt atcatcaagg aggaagtgtt ggcctacgtg 900
gtgcagctgc ccctgtacgg cgtgatcgac acccctgct ggaagctgca caccagcccc 960
ctgtgcacca ccaacaccaa ggagggcagc aacatctgcc tgacgcgtac cgaccgcggc 1020
tggtactgcg acaacgcggg cagcgtgagc ttcttcccc aagccgagac ctgcaaagtg 1080
cagagcaacc gcgtgtctct cgacaccatg aacagcctga ccctgcccag cgaagtgaac 1140
ctgtgcaacg tggacatcct caaccccaag tacgactgca agatcatgac cagcaagacc 1200
gacgtgagca gcagcgtgat caccagcctg ggcgccatcg tgagctgcta cgggaagacc 1260
aagtgcaccg ccagcaacaa gaaccgcggc atcatcaaga ccttcagcaa cggctgcgac 1320
tacgtgagca acaagggcgt ggacaccgtg agcgtgggga acaccctgta ctacgtgaac 1380
aagcaagagg ggaagagcct gtacgtgaag ggcgagccca tcatcaactt ctacgacccc 1440
ctggtgttcc ccagcgacga gttcgacgcc agcatcagcc aagtgaacga gaagatcaac 1500
cagagtctgg ccttcctcgc caagagcgac gagctgctgc acaacgtgaa cgcggggaag 1560
agcaccacca acatcatgat caccaccatc atcatcgtga tcatcgtgat cctgctgagc 1620
ctgatcgccg tgggcctgct gctgtactgc aaggcccgca gatag 1665

```

<210> SEQ ID NO 6

<211> LENGTH: 1545

<212> TYPE: DNA

<213> ORGANISM: Artificial Sequence

<220> FEATURE:

<223> OTHER INFORMATION: Codon-optimized sequence encoding RSV F protein variant of SEQ ID NO:3

<400> SEQUENCE: 6

```

atggagctgc tgatcctgaa ggccaacgcc atcaccacca tcctgaccgc cgtgaccttc 60
tgcttcgcca gcgccagaa catcaccgag gagttctacc agagcacctg cagcgccgtg 120
agcaagggct acctgagcgc cctgcgcacc ggctggtaca ccagcgtgat caccatcgag 180
ctgagcaaca tcaaggagaa caagtgaac ggcaccgacg ccaaaagtga gctgatcaag 240
caagagctgg acaagtacaa gaacgcctg accgagctgc agctgctgac ccagagcacc 300
cccgccacca acaaccgggc cgcgcgcgag ctgccccgct tcatgaacta caccctgaac 360
aacgccaaga agaccaacgt gaccctgagc aagaagcgca agcgccgctt cctgggcttc 420
ctgctgggcg tgggcagcgc catcgccagc ggcgtggccg tgtgtaaagt gctgcacctg 480
gagggcgaag tgaacaagat caagagcgcc ctgctgagca ccaacaaggc cgtggtgagc 540
ctgagcaacg gcgtgagcgt gctgaccttc aaagtgctgg acctgaagaa ctacatcgac 600
aagcagctgc tgcccatcct caacaagcag agctgcagca tcagcaacat cgagaccgtg 660

```


-continued

```

atcgagttcc agcagaagaa caaccgctg ctggagatca cccgcgagtt cagcgtgaac 720
gccggcgtga ccacccccgt gagcacctac atgctgacca acagcgagct gctgagcctg 780
atcaacgaca tgcccatcac caacgaccag aagaagctga tgagcaacaa cgtgcagatc 840
gtgcgccagc agagctacag catcatgtgt atcatcaagg aggaagtgtt ggcctacgtg 900
gtgcagctgc ccctgtacgg cgtgatcgac acccctgtct ggaagctgca caccagcccc 960
ctgtgcacca ccaacaccaa ggagggcagc aacatctgcc tgacgcgtac cgaccgcggc 1020
tggtactgag acaacgcggg cagcgtgagc ttcttcccc aagccgagac ctgcaaagtg 1080
cagagcaacc gcgtgttctg cgacaccatg aacagcctga ccctgcccag cgaagtgaac 1140
ctgtgcaacg tggacatctt caaccccaag tacgactgca agatcatgac cagcaagacc 1200
gacgtgagca gcagcgtgat caccagcctg ggcccatcgc tgagctgcta cgggaagacc 1260
aagtgccacc ccagcaacaa gaaccgcggc atcatcaaga ccttcagcaa cggctgcgac 1320
tacgtgagca acaagggcgt ggacaccgtg agcgtgggga acacctgta ctacgtgaac 1380
aagcaagagg ggaagagcct gtacgtgaag ggccagccca tcatcaactt ctacgacccc 1440
ctggtgttcc ccagcgacga gttcgacgcc agcatcagcc aagtgaacga gaagatcaac 1500
cagagtctgg ccttcatcgc caagagcgcg gagctgctgg gctag 1545

```

<210> SEQ ID NO 7

<211> LENGTH: 1572

<212> TYPE: DNA

<213> ORGANISM: Artificial Sequence

<220> FEATURE:

<223> OTHER INFORMATION: Codon-optimized sequence encoding RSV F protein variant of SEQ ID NO:4

<400> SEQUENCE: 7

```

atggagctgc tgatcctgaa ggccaacgcc atcaccacca tctgaccgc cgtgacctc 60
tgcttcgcca gggccagaa catcacccag gagttctacc agagcacctg cagcgcctg 120
agcaagggtt acctgagcgc cctgcgcacc ggctggtaca ccagcgtgat caccatcgag 180
ctgagcaaca tcaaggagaa caagtgaac ggcaccgacg ccaaagtga gctgatcaag 240
caagagctgg acaagtataa gaacgcctg accgagctgc agctgctgac ccagagcacc 300
cccgccacca acaaccgggc ccgccgcgag ctgccccgct tcatgaacta caccctgaac 360
aacgccaaga agaccaacgt gaccctgagc aagaagcga agcgcctt cctgggctt 420
ctgctgggag tgggcagcgc catcgccagc ggcgtggccg tgtgtaaagt gctgcacctg 480
gagggcgaag tgaacaagat caagagcgc ctgctgagca ccaacaaggc cgtggtgagc 540
ctgagcaacg gcgtgagcgt gctgacctc aaagtgtgg acctgaagaa ctacatcgac 600
aagcagctgc tgccatcct caacaagcag agctgcagca tcagcaacat cgagaccgtg 660
atcgagttcc agcagaagaa caaccgctg ctggagatca cccgcgagtt cagcgtgaac 720
gccggcgtga ccacccccgt gagcacctac atgctgacca acagcgagct gctgagcctg 780
atcaacgaca tgcccatcac caacgaccag aagaagctga tgagcaacaa cgtgcagatc 840
gtgcgccagc agagctacag catcatgtgt atcatcaagg aggaagtgtt ggcctacgtg 900
gtgcagctgc ccctgtacgg cgtgatcgac acccctgtct ggaagctgca caccagcccc 960
ctgtgcacca ccaacaccaa ggagggcagc aacatctgcc tgacgcgtac cgaccgcggc 1020
tggtactgag acaacgcggg cagcgtgagc ttcttcccc aagccgagac ctgcaaagtg 1080
cagagcaacc gcgtgttctg cgacaccatg aacagcctga ccctgcccag cgaagtgaac 1140

```

-continued

ctgtgcaacg tggacatctt caacccaag tacgactgca agatcatgac cagcaagacc	1200
gacgtgagca gcagcgtgat caccagcctg ggcgccatcg tgagctgcta cgggaagacc	1260
aagtgcaccg ccagcaacaa gaaccgcggc atcatcaaga ccttcagcaa cggctgcgac	1320
tacgtgagca acaagggcgt ggacacogtg agcgtgggga acaccctgta ctacgtgaac	1380
aagcaagagg ggaagagcct gtacgtgaag ggcgagccca tcatcaactt ctacgacccc	1440
ctggtgttcc ccagcgaaga gttcgacgcc agcatcagcc aagtgaacga gaagatcaac	1500
cagagtctgg ccttcatccg caagagcgac gagctgctgg gcagctggaa ggacgccagc	1560
ggctggagct ag	1572

<210> SEQ ID NO 8

<211> LENGTH: 1665

<212> TYPE: DNA

<213> ORGANISM: Artificial Sequence

<220> FEATURE:

<223> OTHER INFORMATION: Gene encoding RSV F protein variant of SEQ ID NO:2, based on wild type RSV nucleotide sequence

<400> SEQUENCE: 8

atggagttgc taatcctcaa agcaaatgca attaccacaa tcctcactgc agtcacattt	60
tgttttgctt ctggtcaaaa catcactgaa gaattttatc aatcaacatg cagtgcagtt	120
agcaaaaggct atcttagtgc tctgagaact ggttggtata ccagtgttat aactatagaa	180
ttaagtaata tcaaggaaaa taagtgaat ggaacagatg ctaaggtaaa attgataaaa	240
caagaattag ataaatataa aaatgctgta acagaattgc agttgctcac gcaaagcaca	300
ccagcaacaa acaatcgagc cagaagagaa ctaccaaggt ttatgaatta tacactcaac	360
aatgccaaaa aaaccaatgt aacattaagc aagaaaagga aaagaagatt tcttggtttt	420
ttggttagtg ttggatctgc aatcgccagt ggcgttgctg tatgcaaggt cctgcaccta	480
gaaggggaag tgaacaagat caaaagtgct ctactatcca caaacaaggc tgtagtcagc	540
ttatcaaatg gagttagtgt cttaacctc aaagtgttag acctcaaaaa ctatatagat	600
aaacaattgt tacctattct caacaagcaa agctgcagca tatcaaatat agaaactgtg	660
atagagttcc aacaaaagaa caacagacta ctagagatta cccgggaatt tagtgtaaat	720
gcaggtgtaa ctacacctgt aagcacttac atgttaacta atagtgaatt attgtcatta	780
atcaatgata tgcctataac aaatgatcag aaaaagttaa tgtccaacaa tgttcaata	840
gttagacagc aaagttaact tatcatgtgt ataataaaag aggaagtctt agcatatgta	900
gtacaattac ctctatatgg tgttatagat acaccctgtt ggaaactaca cacatcccct	960
ctatgtacga ccaacacaaa agaagggtcc aacatctgtt taacaagaac tgacagagga	1020
tggtactgtg acaatgcagg atcagtatct ttcttccac aagctgaaac atgtaaagtt	1080
caatcaaatc gagtattttg tgacacaatg aacagtttaa cattaccaag tgaagtaaat	1140
ctctgcaatg ttgacatatt caacccaata tatgattgta aaattatgac ttcaaaaaca	1200
gatgtaagca gctccgttat cacatctcta ggagccattg tgtcatgcta tggcaaaact	1260
aaatgtacag catccaataa aaatcgtgga atcataaaga cattttctaa cgggtgcat	1320
tatgtatcaa ataaaggggt ggacactgtg tctgtaggta acacattata ttatgtaaat	1380
aagcaagaag gtaaaagtct ctatgtaaaa ggtgaaccaa taataaattt ctatgaccca	1440
ttagtattcc cctctgatga atttgatgca tcaatatctc aagtcaacga gaagattaac	1500
cagagtctgg ccttcatccg caagagcgac gagctgctgc acaacgtgaa cgccgggaag	1560

-continued

```

agcaccacca acatcatgat caccaccatc atcatcgtga tcatcgtgat cctgctgagc 1620
ctgatcgccg tgggcctgct gctgtactgc aaggcccgca gatag 1665

```

```

<210> SEQ ID NO 9
<211> LENGTH: 1545
<212> TYPE: DNA
<213> ORGANISM: Artificial Sequence
<220> FEATURE:
<223> OTHER INFORMATION: Gene encoding RSV F protein variant of SEQ ID
NO:3, based on wild type RSV nucleotide sequence

```

```

<400> SEQUENCE: 9
atggagttgc taatcctcaa agcaaatgca attaccacaa tcctcactgc agtcacattt 60
tgttttgctt ctggtcaaaa catcactgaa gaattttatc aatcaacatg cagtgcagtt 120
agcaaaggct atcttagtgc tctgagaact ggttggtata ccagtgttat aactatagaa 180
ttaagtaata tcaaggaaaa taagtgtaat ggaacagatg ctaaggtaaa attgataaaa 240
caagaattag ataaatataa aaatgctgta acagaattgc agttgctcac gcaaagcaca 300
ccagcaacaa acaatcgagc cagaagagaa ctaccaaggt ttatgaatta tacactcaac 360
aatgcaaaaa aaaccaatgt aacattaagc aagaaaagga aaagaagatt tcttggtttt 420
ttggttagtg ttgatctgc aatcgccagt ggcgttgctg tatgcaaggt cctgcaccta 480
gaaggggaag tgaacaagat caaaagtgt ctactatcca caaacaagge tgtagtcagc 540
ttatcaaatg gagttagtgt cttaacctc aaagtgttag acctcaaaaa ctatatagat 600
aaacaattgt tacctattct caacaagcaa agctgcagca tatcaaatat agaaactgtg 660
atagagttcc aacaaaagaa caacagacta ctagagatta cccgggaatt tagtgtaaat 720
gcaggtgtaa ctacacctgt aagcacttac atgttaacta atagtgaatt attgtcatta 780
atcaatgata tgcctataac aaatgatcag aaaaagttaa tgtccaacaa tgttcaata 840
gttagacagc aaagttaact tatcatgtgt ataataaaag aggaagtctt agcatatgta 900
gtacaattac ctctatatgg tgttatagat acacctgtt ggaaactaca cacatcccct 960
ctatgtacga ccaacacaaa agaagggtcc aacatctgtt taacaagaac tgacagagga 1020
tggtagctgt acaatgcagg atcagtatct ttcttccac aagctgaaac atgtaaagtt 1080
caatcaaatc gagtattttg tgacacaatg aacagtttaa cattaccaag tgaagtaaat 1140
ctctgcaatg ttgacatatt caaccccaaa tatgattgta aaattatgac ttcaaaaaca 1200
gatgtaagca gctccgttat cacatctcta ggagccattg tgtcatgcta tggcaaaact 1260
aaatgtacag catccaataa aaatcgtgga atcataaaga cattttctaa cgggtgcat 1320
tatgtatcaa ataaggggt ggacactgtg tctgtaggtg acacattata ttatgtaaat 1380
aagcaagaag gtaaaagtct ctatgtaaaa ggtgaaccaa taataaattt ctatgacca 1440
ttagtattcc cctctgatga atttgatgca tcaatatctc aagtcaacga gaagattaac 1500
cagagtctgg ccttcatccg caagagcgac gagctgctgg gctaa 1545

```

```

<210> SEQ ID NO 10
<211> LENGTH: 1572
<212> TYPE: DNA
<213> ORGANISM: Artificial Sequence
<220> FEATURE:
<223> OTHER INFORMATION: Gene encoding RSV F protein variant of SEQ ID
NO:4, based on wild type RSV nucleotide sequence

```

```

<400> SEQUENCE: 10
atggagttgc taatcctcaa agcaaatgca attaccacaa tcctcactgc agtcacattt 60

```

-continued

```

tgttttgctt ctggcaaaa catcactgaa gaattttatc aatcaacatg cagtgcagtt 120
agcaaagcct atcttagtgc tctgagaact ggttggtata ccagtgttat aactatagaa 180
ttaagtaata tcaaggaaaa taagtgtaat ggaacagatg ctaaggtaaa attgataaaa 240
caagaattag ataaatataa aaatgctgta acagaattgc agttgctcac gcaaagcaca 300
ccagcaacaa acaatcgagc cagaagagaa ctaccaaggt ttatgaatta tacctcaac 360
aatgccaaaa aaaccaatgt aacattaagc aagaaaagga aaagaagatt tcttggtttt 420
ttggttagtg ttggatctgc aatcgccagt ggcgttgctg tatgcaaggt cctgcaccta 480
gaaggggaag tgaacaagat caaaagtgct ctactatcca caaacaaggc tgtagtcagc 540
ttatcaaagt gagttagtgt cttaaccttc aaagtgttag acctcaaaaa ctatatagat 600
aaacaattgt tacctattct caacaagcaa agctgcagca tatcaaatat agaaactgtg 660
atagagttcc aacaaaagaa caacagacta ctagagatta cccgggaatt tagtgtaaat 720
gcagggttaa ctacacctgt aagcacttac atgttaacta atagtgaatt attgtcatta 780
atcaatgata tgcctataac aaatgatcag aaaaagttaa tgtccaacaa tgttcaaata 840
gttagacagc aaagttaact tatcatgtgt ataataaaag aggaagtctt agcatatgta 900
gtacaattac ctctatatgg tgttatagat acacctgtt ggaaactaca cacatcccct 960
ctatgtacga ccaacacaaa agaaggggtcc aacatctggt taacaagaac tgacagagga 1020
tggtactgtg acaatgcagg atcagtatct ttcttcccac aagctgaaac atgtaaagtt 1080
caatcaaatc gagtattttg tgacacaatg aacagtttaa cattaccaag tgaagtaaat 1140
ctctgcaatg ttgacatatt caaccccaaa tatgattgta aaattatgac ttcaaaaaca 1200
gatgtaagca gctccgttat cacatctcta ggagccattg tgtcatgcta tggcaaaact 1260
aaatgtacag catccaataa aaatcgtgga atcataaaga cattttctaa cgggtgcgat 1320
tatgtatcaa ataaaggggt ggacactgtg tctgtaggta acacattata ttatgtaaat 1380
aagcaagaag gtaaaagtct ctatgtaaaa ggtgaaccaa taataaattt ctatgacca 1440
ttagtattcc cctctgatga atttgatgca tcaatatctc aagtcaacga gaagattaac 1500
cagagtctgg ccttcatcgg caagagcgac gagctgctgg gcagctggaa ggacgccagc 1560
ggctggagct aa 1572

```

```

<210> SEQ ID NO 11
<211> LENGTH: 9
<212> TYPE: PRT
<213> ORGANISM: Autographa californica nucleopolyhedrovirus

```

```

<400> SEQUENCE: 11

```

```

Ser Trp Lys Asp Ala Ser Gly Trp Ser
1           5

```

```

<210> SEQ ID NO 12
<211> LENGTH: 27
<212> TYPE: DNA
<213> ORGANISM: Autographa californica nucleopolyhedrovirus

```

```

<400> SEQUENCE: 12

```

```

agttggaagg acgccagcgg gtggagc 27

```

```

<210> SEQ ID NO 13
<211> LENGTH: 298
<212> TYPE: PRT
<213> ORGANISM: respiratory syncytial virus

```

-continued

<400> SEQUENCE: 13

```

Met Ser Lys Asn Lys Asp Gln Arg Thr Ala Lys Thr Leu Glu Arg Thr
1      5      10      15
Trp Asp Thr Leu Asn His Leu Leu Phe Ile Ser Ser Cys Leu Tyr Lys
      20      25      30
Leu Asn Leu Lys Ser Val Ala Gln Ile Thr Leu Ser Ile Leu Ala Leu
      35      40      45
Ile Ile Ser Thr Ser Leu Ile Ile Ala Ala Ile Ile Phe Ile Ala Ser
      50      55      60
Ala Asn His Lys Val Thr Pro Thr Thr Ala Ile Ile Gln Asp Ala Thr
      65      70      75      80
Ser Gln Leu Lys Asn Thr Thr Pro Thr Tyr Leu Thr Gln Asn Pro Gln
      85      90      95
Leu Gly Ile Ser Pro Ser Asn Pro Ser Glu Ile Thr Ser Gln Ile Thr
      100      105      110
Thr Ile Leu Ala Ser Thr Thr Pro Gly Val Lys Ser Thr Leu Gln Ser
      115      120      125
Thr Thr Val Lys Thr Lys Asn Thr Thr Thr Thr Gln Thr Gln Pro Ser
      130      135      140
Lys Pro Thr Thr Lys Gln Arg Gln Asn Lys Pro Pro Ser Lys Pro Asn
      145      150      155      160
Asn Asp Phe His Phe Glu Val Phe Asn Phe Val Pro Cys Ser Ile Cys
      165      170      175
Ser Asn Asn Pro Thr Cys Trp Ala Ile Cys Lys Arg Ile Pro Asn Lys
      180      185      190
Lys Pro Gly Lys Lys Thr Thr Thr Lys Pro Thr Lys Lys Pro Thr Leu
      195      200      205
Lys Thr Thr Lys Lys Asp Pro Lys Pro Gln Thr Thr Lys Ser Lys Glu
      210      215      220
Val Pro Thr Thr Lys Pro Thr Glu Glu Pro Thr Ile Asn Thr Thr Lys
      225      230      235      240
Thr Asn Ile Ile Thr Thr Leu Leu Thr Ser Asn Thr Thr Gly Asn Pro
      245      250      255
Glu Leu Thr Ser Gln Met Glu Thr Phe His Ser Thr Ser Ser Glu Gly
      260      265      270
Asn Pro Ser Pro Ser Gln Val Ser Thr Thr Ser Glu Tyr Pro Ser Gln
      275      280      285
Pro Ser Ser Pro Pro Asn Thr Pro Arg Gln
      290      295

```

<210> SEQ ID NO 14

<211> LENGTH: 897

<212> TYPE: DNA

<213> ORGANISM: respiratory syncytial virus

<400> SEQUENCE: 14

```

atgtccaanaa acaaggacca acgcaccgct aagacattag aaaggacctg ggacactctc      60
aatcatttat tattcatatc atcgtgctta tataagttaa atcttaaadc tgtagcacia      120
atcacattat ccattctcgc actcataatc tcaacttcac ttataattgc agccatcata      180
ttcatagcct cggcaaacca caaagtcaca ccaacaactg caatcataca agatgcaaca      240
agccagctca agaacacaac cccaacatac ctcaccaga atcctcagct tggaatcagt      300
ccctctaadc cgtctgaat tacatcacia atcaccacca tacttgcttc aacaacacca      360

```

-continued

```

ggagtcaagt caaccctgca atccacaaca gtcaagacca aaaacacaac aacaactcaa 420
acacaaccca gcaagcccac cacaaaaaaa cgccaaaaca aaccaccaag caaacccaat 480
aatgattttc actttgaagt gttcaacttt gtaccctgca gcatatgcag caacaatcca 540
acctgctggg ctatctgcaa aagaatacca aacaaaaaac caggaaagaa aaccactacc 600
aagcccacaa aaaaaccaac cctcaagaca accaaaaaag atcccaaacc tcaaaccact 660
aatcaaagg aagtaccac caccaagccc acagaagagc caaccatcaa caccacaaa 720
acaaacatca taactacact actcacctcc aacaccacag gaaatccaga actcacaagt 780
caaatgaaa ccttccactc aacttcctcc gaaggcaatc caagccttc tcaagtctct 840
acaacatcgg agtaccatc acaaccttca tctccacca acacaccagc ccagtag 897

```

```

<210> SEQ ID NO 15
<211> LENGTH: 520
<212> TYPE: PRT
<213> ORGANISM: Artificial sequence
<220> FEATURE:
<223> OTHER INFORMATION: Chimera of Baculovirus GP64 protein with
cytoplasmic tail of RSV F protein

```

```

<400> SEQUENCE: 15

```

```

Met Val Ser Ala Ile Val Leu Tyr Val Leu Leu Ala Ala Ala Ala His
1          5          10          15
Ser Ala Phe Ala Ala Glu His Cys Asn Ala Gln Met Lys Thr Gly Pro
20          25          30
Tyr Lys Ile Lys Asn Leu Asp Ile Thr Pro Pro Lys Glu Thr Leu Gln
35          40          45
Lys Asp Val Glu Ile Thr Ile Val Glu Thr Asp Tyr Asn Glu Asn Val
50          55          60
Ile Ile Gly Tyr Lys Gly Tyr Tyr Gln Ala Tyr Ala Tyr Asn Gly Gly
65          70          75          80
Ser Leu Asp Pro Asn Thr Arg Val Glu Glu Thr Met Lys Thr Leu Asn
85          90          95
Val Gly Lys Glu Asp Leu Leu Met Trp Ser Ile Arg Gln Gln Cys Glu
100         105         110
Val Gly Glu Glu Leu Ile Asp Arg Trp Gly Ser Asp Ser Asp Asp Cys
115         120         125
Phe Arg Asp Asn Glu Gly Arg Gly Gln Trp Val Lys Gly Lys Glu Leu
130         135         140
Val Lys Arg Gln Asn Asn Asn His Phe Ala His His Thr Cys Asn Lys
145         150         155         160
Ser Trp Arg Cys Gly Ile Ser Thr Ser Lys Met Tyr Ser Arg Leu Glu
165         170         175
Cys Gln Asp Asp Thr Asp Glu Cys Gln Val Tyr Ile Leu Asp Ala Glu
180         185         190
Gly Asn Pro Ile Asn Val Thr Val Asp Thr Val Leu His Arg Asp Gly
195         200         205
Val Ser Met Ile Leu Lys Gln Lys Ser Thr Phe Thr Thr Arg Gln Ile
210         215         220
Lys Ala Ala Cys Leu Leu Ile Lys Asp Asp Lys Asn Asn Pro Glu Ser
225         230         235         240
Val Thr Arg Glu His Cys Leu Ile Asp Asn Asp Ile Tyr Asp Leu Ser
245         250         255
Lys Asn Thr Trp Asn Cys Lys Phe Asn Arg Cys Ile Lys Arg Lys Val

```

-continued

260			265			270									
Glu	His	Arg	Val	Lys	Lys	Arg	Pro	Pro	Thr	Trp	Arg	His	Asn	Val	Arg
	275						280						285		
Ala	Lys	Tyr	Thr	Glu	Gly	Asp	Thr	Ala	Thr	Lys	Gly	Asp	Leu	Met	His
	290					295					300				
Ile	Gln	Glu	Glu	Leu	Met	Tyr	Glu	Asn	Asp	Leu	Leu	Lys	Met	Asn	Ile
305					310					315				320	
Glu	Leu	Met	His	Ala	His	Ile	Asn	Lys	Leu	Asn	Asn	Met	Leu	His	Asp
				325					330					335	
Leu	Ile	Val	Ser	Val	Ala	Lys	Val	Asp	Glu	Arg	Leu	Ile	Gly	Asn	Leu
			340					345					350		
Met	Asn	Asn	Ser	Val	Ser	Ser	Thr	Phe	Leu	Ser	Asp	Asp	Thr	Phe	Leu
	355						360					365			
Leu	Met	Pro	Cys	Thr	Asn	Pro	Pro	Ala	His	Thr	Ser	Asn	Cys	Tyr	Asn
370						375					380				
Asn	Ser	Ile	Tyr	Lys	Glu	Gly	Arg	Trp	Val	Ala	Asn	Thr	Asp	Ser	Ser
385				390						395				400	
Gln	Cys	Ile	Asp	Phe	Ser	Asn	Tyr	Lys	Glu	Leu	Ala	Ile	Asp	Asp	Asp
			405						410					415	
Val	Glu	Phe	Trp	Ile	Pro	Thr	Ile	Gly	Asn	Thr	Thr	Tyr	His	Asp	Ser
			420					425					430		
Trp	Lys	Asp	Ala	Ser	Gly	Trp	Ser	Phe	Ile	Ala	Gln	Gln	Lys	Ser	Asn
	435					440						445			
Leu	Ile	Thr	Thr	Met	Glu	Asn	Thr	Lys	Phe	Gly	Gly	Val	Gly	Thr	Ser
450					455					460					
Leu	Ser	Asp	Ile	Thr	Ser	Met	Ala	Glu	Gly	Glu	Leu	Ala	Ala	Lys	Leu
465					470					475				480	
Thr	Ser	Phe	Met	Phe	Gly	His	Val	Val	Asn	Phe	Val	Ile	Ile	Leu	Ile
			485						490					495	
Val	Ile	Leu	Phe	Leu	Tyr	Cys	Met	Ile	Ser	Arg	Arg	Gln	Leu	Ser	Gly
		500					505						510		
Ile	Asn	Asn	Ile	Ala	Phe	Ser	Asn								
	515						520								

<210> SEQ ID NO 16
 <211> LENGTH: 1563
 <212> TYPE: DNA
 <213> ORGANISM: Artificial Sequence
 <220> FEATURE:
 <223> OTHER INFORMATION: Nucleotide sequence encoding the amino acid
 sequence of SEQ ID NO:15

<400> SEQUENCE: 16

 atggtaaagc ctattgtttt atatgtgctt ttggcggcgg cggcgcattc tgcctttgcg 60
 gcggagcact gcaacgcgca aatgaagacg ggtccgtaca agattaaaa cttggacatt 120
 accccgcccc aggaaaacgct gcaaaaaggac gtggaatca ccatcgtgga gacggactac 180
 aacgaaaacg tgattatcgg ctacaagggg tactaccagg cgtatgcgta caacggcggc 240
 tcgctggatc ccaacacacg cgtcgaagaa accatgaaaa cgctgaatgt gggcaaagag 300
 gatttgctca tgtggagcat caggcagcag tgcgaggtgg gcgaagagct gatcgaccgt 360
 tggggcagtg acagcgacga ctgttttcgc gacaacgagg gccgcggcca gtgggtcaaa 420
 ggcaaagagt tggtaagcgc gcagaataac aatcactttg cgcaccacac gtgcaacaaa 480
 tcgtggcgat gcggcatttc cacttcgaaa atgtactcca ggctggagtg ccaggacgac 540

-continued

```

acggacgagt gccaggtata cattttggac gctgagggca accccatcaa cgtgaccgtg 600
gacactgtgc ttcacgaga cggcgtgagt atgatttcca aacaaaagtc tacgttcacc 660
acgcgccaaa taaaagctgc gtgtctgctc attaaagatg acaaaaataa ccccgagtcg 720
gtgacacgog aacactgttt gattgacaat gatatatatg atctttctaa aaacacgtgg 780
aactgcaagt ttaacagatg cattaaacgc aaagtcgagc accgagtcga gaagcggccg 840
cccacttggc gccacaagc tagagccaag tacacagagg gagacactgc caccaaaggc 900
gacctgatgc atattcaaga ggagctgatg tacgaaaacg atttctgaa aatgaacatt 960
gagctgatgc atgcgcacat caacaagc aacaatagc tgcacgacct gatagtctcc 1020
gtggccaagg tggacgagc tttgattggc aatctcatga acaactctgt ttcttcaaca 1080
tttttgcgg acgacacgtt tttgctgatg ccgtgcacca atccgcggc acacaccagt 1140
aattgctaca acaacagcat ctacaagaa gggcgttggg tggccaacac ggactcgtcg 1200
caatgcatag attttagcaa ctacaaggaa ctagcaattg acgacgacgt cgagttttgg 1260
atcccgacca tcggcaacac gacctatcac gacagtggga aagatgccag cggtgggtcg 1320
tttattgccc acaaaaaag caacctcata accaccatgg agaacaccaa gtttggcggc 1380
gtcggcacca gtctgagcga catcaattcc atggctgaag gcgaattggc cgctaaattg 1440
acttcgttca tgtttgttca tgtagttaac tttgtaatta tattaattgt gattttattt 1500
ttgtactgta tgatttctag aagacagctg agtggtataa ataatttgc atttagtaac 1560
taa 1563

```

```

<210> SEQ ID NO 17
<211> LENGTH: 897
<212> TYPE: DNA
<213> ORGANISM: respiratory syncytial virus

<400> SEQUENCE: 17

```

```

atgtccaaaa acaaggacca acgcaccgct aagacattag aaaggacctg ggacactctc 60
aatcatttat tattcatatc atcgtgctta tataagttaa atcttaaatc tgtagcacia 120
atcacattat ccattctggc aatgataatc tcaacttcac ttataattgc agccatcata 180
ttcatagcct cggcaaacca caaagtccca ccaacaactg caatcataca agatgcaaca 240
agccagatca agaacacaac ccaacatac ctcaccaga atcctcagct tggaatcagt 300
ccctctaatc cgtctgaaat tacatcacia atcaccacca tacttgcttc aacaacacca 360
ggagtcaagt caaccctgca atccacaaca gtcaagacca aaaacacaac aacaactcaa 420
acacaaccca gcaagccac cacaaaacaa cgccaaaaca aaccaccaag caaacccaat 480
aatgattttc actttgaagt gttcaacttt gtaccctgca gcatatgcag caacaatcca 540
acctgctggg ctatctgcaa aagaatacca acaaaaaaac caggaaagaa aaccactacc 600
aagcccacaa aaaaaccaac cctcaagaca accaaaaaag atcccaaac tcaaaccact 660
aaatcaaagg aagtaccac caccaagccc acagaagagc caaccatcaa caccacaaa 720
acaaacatca taactacact actcacctcc aacaccacag gaaatccaga actcacaagt 780
caaatgaaa cctccactc aacttctcc gaaggcaatc caagcccttc tcaagtctct 840
acaacatccg agtaccatc acaaccttca tctccacca acacaccacg ccagtag 897

```

```

<210> SEQ ID NO 18
<211> LENGTH: 897
<212> TYPE: DNA
<213> ORGANISM: Artificial Sequence

```


-continued

<220> FEATURE:

<223> OTHER INFORMATION: Codon-optimized sequence of gene encoding RSV G protein

<400> SEQUENCE: 18

```

atgtccaaga acaaggacca gcgcacccgc aagaccctcg aaaggacctg ggacactctc    60
aatcatttat tattcatatc atcgtgctta tataagctca acctcaagag cgtggcccag    120
atcacctca  gcatcctggc catgatcacc agcaccagcc tcatcatcgc cgccatcacc    180
ttcatcgcca gcgccaacca caaagtgacc cccaccaccg ccatcatcca agacgccacc    240
agccagatca agaacaccac ccccaacctac ctcaccacaga acccccagct cggcatcagc    300
cccagcaacc ccagcgagat caccagccag atcaccacca tctctgccag caccaccccc    360
ggcgtgaaga gcaccctcca gagcaccacc gtgaagacca agaacaccac caccacccag    420
accagcccca gcaagccccc caccaagcag cgccagaaca agccccccag caagcccaac    480
aacgacttcc acttogaagt gttcaacttc gtgccttgca gcattttgag caacaacccc    540
acttgttggg ccatttgcaa gcgcatcccc aacaagaagc ccggaagaa gaccaccacc    600
aagcccccca agaagccccc cctcaagacc accaagaagg accccaagcc ccagaccacc    660
aagagcaagg aagtgccccc caccaagccc accgaggagc ccaccatcaa caccaccaag    720
accaacatca tcaccacct cctcaccagc aacaccaccg ggaaccccga gctcaccagc    780
cagatggaga ccttccacag caccagcagc gaggggaacc ccagccccag ccaagtgagc    840
accaccagcg agtacccccag ccagcccagc agccctccca acaccccccg ccagtaa    897

```

What is claimed is:

1. A recombinant, live, attenuated virus of the Pneumoviridae family comprising:

a baculovirus GP64 envelope glycoprotein or variant or fragment thereof, wherein the baculovirus GP64 envelope glycoprotein or variant or fragment thereof is capable of mediating entry of the recombinant virus into a mammalian cell; and

a polynucleotide encoding a respiratory syncytial virus (RSV) F protein variant or fragment thereof, wherein the RSV F protein variant or fragment thereof comprises at least one of the amino acid substitutions S155C, S190F, V207L, and S290C when compared to the native RSV F protein sequence of SEQ ID NO:1, wherein the at least one amino acid substitution stabilizes the RSV F protein variant or fragment thereof in a pre-fusion conformation.

2. The recombinant, live, attenuated virus of claim 1, wherein the RSV F protein variant or fragment thereof comprises the amino acid substitutions S155C, S190F, V207L, and S290C when compared to the native RSV F protein sequence of SEQ ID NO:1.

3. The recombinant, live, attenuated virus of claim 1, further defined as a recombinant respiratory syncytial virus.

4. The recombinant, live, attenuated virus of claim 1, wherein the recombinant, live, attenuated virus maintains infective stability when stored at above 0° C. for at least 3.5 days.

5. The recombinant, live, attenuated virus of claim 1, further defined as an enveloped recombinant, live, attenuated virus.

6. The recombinant, live, attenuated virus of claim 1, wherein the virus is capable of infecting a cell in a mammal but cannot transmit from said cell to another cell in the mammal.

7. The recombinant, live, attenuated virus of claim 1, wherein the polynucleotide encoding the RSV F protein variant or fragment thereof has been codon-optimized.

8. The recombinant, live, attenuated virus of claim 1, wherein the polynucleotide encoding the RSV F protein variant or fragment thereof comprises at least one of SEQ ID NOS:5-10.

9. The recombinant, live, attenuated virus of claim 1, wherein the baculovirus GP64 envelope glycoprotein or variant or fragment thereof is not encoded by the viral genome but rather is obtained from a cell line from which the virus is produced.

10. The recombinant, live, attenuated virus of claim 1, wherein the baculovirus GP64 envelope glycoprotein or variant or fragment thereof is encoded by the viral genome.

11. The recombinant, live, attenuated virus of claim 1, further encoding at least one of:

an RSV NS1 protein or a variant or fragment thereof;

an N protein or a variant or fragment thereof;

a P protein or a variant or fragment thereof;

an M protein or a variant or fragment thereof;

an SH protein or a variant or fragment thereof;

a G protein or a variant or fragment thereof;

an M-2 protein or a variant or fragment thereof;

an L protein or a variant or fragment thereof; or

any combination thereof.

12. The recombinant, live, attenuated virus of claim 1, further defined as lacking expression of at least one virulence factor encoded by the wild type virus.

13. The recombinant, live, attenuated virus of claim 1, wherein:

(a) the baculovirus GP64 envelope glycoprotein or variant or fragment thereof comprises an ectodomain of the baculovirus GP64 envelope glycoprotein;

- (b) the baculovirus GP64 envelope glycoprotein or variant or fragment thereof comprises an ectodomain and a transmembrane domain of the baculovirus GP64 envelope glycoprotein;
- (c) the baculovirus GP64 envelope glycoprotein or variant or fragment thereof comprises a heterologous cytoplasmic tail; and/or
- (d) the baculovirus GP64 envelope glycoprotein or variant or fragment thereof comprises an amino acid sequence represented by SEQ ID NO:15.

14. The recombinant, live, attenuated virus of claim 1, wherein:

- (a) the RSV F protein variant or fragment thereof is absent at least a portion of a cytoplasmic tail of the native RSV F protein;
- (b) the RSV F protein variant or fragment thereof is absent at least a portion of a transmembrane domain and at least a portion of a cytoplasmic tail of the native RSV F protein;
- (c) the RSV F protein variant or fragment thereof further comprises at least one of an epitope tag and a detectable marker; and/or
- (d) the RSV F protein variant or fragment thereof comprises an amino acid sequence represented by at least one of SEQ ID NOS:2-4.

15. An isolated immunogenic composition, comprising: the recombinant, live, attenuated virus of claim 1.

16. A pharmaceutical composition, comprising:

a therapeutically effective amount of a recombinant, live, attenuated virus of the Pneumoviridae family, the virus comprising:
a baculovirus GP64 envelope glycoprotein or variant or fragment thereof, wherein the baculovirus G64 enve-

lope glycoprotein or variant or fragment thereof is capable of mediating entry of the recombinant virus into a mammalian cell; and

a polynucleotide encoding a respiratory syncytial virus (RSV) F protein variant or fragment thereof, wherein the RSV F protein variant or fragment thereof comprises at least one of the amino acid substitutions S155C, S190F, V207L, and S290C when compared to the native RSV F protein sequence of SEQ ID NO:1, wherein the at least one amino acid substitution stabilizes the RSV F protein variant or fragment thereof in a pre-fusion conformation.

17. A method of producing the recombinant, live, attenuated virus of claim 1, comprising the steps of:

culturing a cell line that expresses a baculovirus GP64 envelope glycoprotein or variant or fragment thereof, the cell line being transfected with at least one polynucleotide encoding RSV virus, wherein the RSV virus comprises an RSV F protein variant or fragment thereof that comprises at least one of the amino acid substitutions S155C, 5190F, V207L, and S290C when compared to the native RSV F protein sequence of SEQ ID NO:1, wherein the at least one amino acid substitution stabilizes the RSV F protein variant or fragment thereof in a pre-fusion conformation; and
wherein the cell line is cultured under conditions that allow for production of the recombinant, live, attenuated virus.

18. A method of eliciting an immune response in a mammal, comprising the step of:

introducing into the mammal the pharmaceutical composition of claim 16.

* * * * *

UNITED STATES PATENT AND TRADEMARK OFFICE
CERTIFICATE OF CORRECTION

PATENT NO. : 10,799,576 B2
APPLICATION NO. : 16/257738
DATED : October 13, 2020
INVENTOR(S) : Antonius G. P. Oomens

Page 1 of 1

It is certified that error appears in the above-identified patent and that said Letters Patent is hereby corrected as shown below:

In the Specification

Column 4, Line 28: Delete “RSV-AG-HRP,” and replace with -- RSV- Δ G-HRP, --

Column 24, Line 13: Delete “RSV6-preF ^{Δ CT}-AG” and replace with -- RSV6-preF ^{Δ CT}- Δ G --

Column 24, Line 38: Delete “RSV-AG-HRP,” and replace with -- RSV- Δ G-HRP, --

Signed and Sealed this
Fifteenth Day of December, 2020



Andrei Iancu
Director of the United States Patent and Trademark Office