

MINUTES OF A REGULAR MEETING  
BOARD OF REGENTS OF THE UNIVERSITY OF OKLAHOMA  
THURSDAY, JULY 14, 1966 - 10:30 A.M.

A regular meeting of the Board of Regents of the University of Oklahoma was held in the office of the President of the University, Norman, on Thursday, July 14, 1966, beginning at 10:30 a.m.

The following were present: Regent Mark R. Johnson, President, presiding; Regents Little, Sparks, Calvert, and Davies.

ABSENT: Regents Davidson and Houchin.

The following were also present: Dr. G. L. Cross, President of the University; Vice Presidents Pete Kyle McCarter and Horace B. Brown; Mr. David A. Burr, Assistant to the President for University Relations; Mr. David Swank, Associate Professor of Law; Mrs. Barbara H. James, Assistant Secretary of the Board of Regents; Dr. James L. Dennis, Dean of the School of Medicine and Director of the Medical Center; and Mr. Raymond D. Crews, Business Administrator of the Medical Center.

The minutes of the meeting held on June 9, 1966, were approved.

A report of the various achievements and accomplishments by the students, faculty, and the University as a whole was included in the agenda for this meeting. In addition to the items listed in the agenda, President Cross called attention to a report from the State Regents for Higher Education on the increase in degrees granted by the various institutions of higher education in the State. This report indicates that from 1960-61 to 1965-66, the number of bachelor's degrees granted by the University of Oklahoma increased by 21%; the number of master's degrees by 93%; and the number of Ph.D. degrees by 186%.

Dr. Johnson distributed to the Regents copies of letters he had received from members of the faculty in response to his letters of congratulation on their accomplishments as listed in the agenda for the June meeting.

Vice President Brown reported that \$15,000 cash is available in the Sallie B. Clark Loan Fund for short-term investment. He recommended this amount be invested in 180-day Certificates of Deposit or Treasury Bills whichever would provide the maximum interest rate.

He also recommended that the \$114,000 in the David Pyle Memorial Fund now invested in a 5 3/8% Certificate of Deposit with the Liberty National Bank and Trust Co., Oklahoma City, and which will mature on August 15, 1966, be reinvested at the appropriate time for six months at the maximum interest rate available.

July 14, 1966

8611

Dr. Brown presented the following investment recommendations which had been received from our investment advisors, J. & W. Seligman & Co., and recommended approval:

Will Rogers Memorial Scholarship Fund

Sell: \$2,000 Federal Home Loan Bonds, 5.15%, 10-25-66  
\$14,000 Federal Land Bank 4 1/8% Bonds, 10-23-67  
50 shares DuPont

Buy: \$15,000 Public Service Electric & Gas 4 3/4% bonds, 6-1-91  
30 shares International Business Machines (adjust according to  
cash available)

Murray Case Sells Building Fund

Purchase \$4,000 National Cash Register 5.60% bonds, maturing 6-15-91, with funds available from the Certificate of Deposit maturing on August 3, 1966.

On motion by Regent Sparks, the above recommendations were approved and the following Resolution authorizing sale of the DuPont stock was unanimously adopted:

RESOLUTION

RESOLVED THAT, we, the Regents of the University of Oklahoma do hereby authorize the sale of the following stock of the E. I. du Pont de Nemours and Company:

50 shares - Certificate Number N 170382

and by these presents we do hereby ratify and confirm the sale of the said shares; and

BE IT FURTHER RESOLVED THAT, Emil R. Kraettli, Secretary of the Regents of the University of Oklahoma, be and he is hereby authorized and empowered to endorse by, and on behalf of the said Regents of the University of Oklahoma, the stock certificates mentioned above, held by the said Regents of the University of Oklahoma, and by these presents we do hereby ratify and confirm the said endorsement of the said shares; and

BE IT FURTHER RESOLVED THAT, the President and the Secretary of the Regents of the University of Oklahoma be and they are hereby empowered to certify the action taken.

Dean Dennis distributed to the Regents copies of an Achievement Report for the Medical Center covering events of the past year. He stated in the future such a report would be current.

July 14, 1966

8612

**MEDICAL CENTER PERSONNEL**

**LEAVE OF ABSENCE WITHOUT PAY:**

Nancy L. Adsett, M.A., Research Associate in Pediatrics, June 9 to September 15, 1966.

**APPOINTMENTS:**

Garabed A. Garabedian, Ph.D., Visiting Professor of Microbiology and Trainee, \$583.33 per month, June 27, 1966.

A. William Shafer, M.D., Associate Professor of Laboratory Medicine, Assistant Professor of Medicine, Director of Blood Bank, \$1,333.33 per month, July 1, 1966.

Roger I. Lienke, M.D., Associate Professor of Preventive Medicine and Public Health, Chairman of the Division of Family Medicine, \$2,000 per month, June 20, 1966.

Albert M. Chandler, Ph.D., Assistant Professor of Biochemistry, \$1,000 per month, August 1, 1966.

Robert Delaney, Ph.D., Assistant Professor of Biochemistry, \$1,083.33 per month, July 1, 1966.

Leon Unger, Ph.D., Assistant Professor of Biochemistry, \$1,000 per month, August 1, 1966.

John D. Chase, M.D., Assistant Professor of Medicine, without remuneration, June 15, 1966.

Daniel McNeel Lane, M.D., Assistant Professor of Pediatrics, \$1,166.66 per month, July 1, 1966.

Robert D. Lindeman, M.D., reappointed Assistant Professor of Preventive Medicine and Public Health, \$1,441.66 per month, June 15, 1966.

Lazar John Greenfield, M.D., Assistant Professor of Surgery, Acting Chief, VA Surgical Service, \$606.75 per month, 3/8 time, July 1, 1966.

L. O. Laughlin, M.D., Instructor in Medicine, without remuneration, July 1, 1966.

Eleanor Bailey, B.S., Instructor in Nutrition, without remuneration, July 1, 1966.

Lucille Boone, B.S., Instructor in Nutrition, without remuneration, July 1, 1966.

July 14, 1966

8613

Pauline Butler, B.S., Instructor in Nutrition, without remuneration, July 1, 1966.

Clara E. Edge, B.S., Instructor in Nutrition, without remuneration, July 1, 1966.

Marjorie Liverman, Instructor in Nutrition, without remuneration, July 1, 1966.

Erma Jean Newman, B.S., Instructor in Nutrition, without remuneration, July 1, 1966.

Maxine Schumacher, M.S., Instructor in Nutrition, without remuneration, July 1, 1966.

Joni K. Stinson, B.S., Instructor in Nutrition, \$50 per month, part time, July 1, 1966.

Julia Weseloh, B.S., Instructor in Nutrition, without remuneration, July 1, 1966.

Colleen Wilson, B.S., Instructor in Nutrition, without remuneration, July 1, 1966.

James H. Little, M.D., Clinical Instructor in Ophthalmology, without remuneration, July 1, 1966.

Billy E. Blevins, reappointed Instructor in Pathology, \$833.33 per month, July 1, 1966.

Ranjit K. Majumder, Ph.D., Instructor in Medical Psychology in Psychiatry, \$800 per month, June 1, 1966; salary increased to \$833.33 per month, July 1, 1966.

Augusto deQuevedo, M.D., Clinical Instructor in Urology, without remuneration, June 1, 1966.

Lillian N. Zimmerman, M.S.W., Clinical Assistant in Psychiatric Social Work in Psychiatry, \$650 per month, May 1, 1966.

Simon Pollack, M.D., Visiting Lecturer in Radiology, without remuneration, July 1, 1966 to July 1, 1967.

**CHANGES:**

Barnett R. Addis, B.S., Research Associate in Psychiatry, salary increased from \$708.33 to \$766.66 per month, July 1, 1966.

July 14, 1966

8614

Lanny G. Anderson, M.D., ~~Assistant~~ <sup>INSTRUCTOR</sup> in Surgery, salary changed from \$1,000 to \$375 per month, 3/8 time, July 1, 1966 to January 1, 1967.

Shelby D. Barnes, M.D., Clinical Instructor in Urology (Fellow), salary changed from \$844.49 to \$833.32 per month, July 1, 1966.

Francis F. Bartone, M.D., Instructor in Urology, salary changed from \$1,166.67 to \$1,000 per month, July 1, 1966.

Donald J. Bertoch, Ph.D., Instructor in Medical Psychology in Psychiatry, salary changed from \$849.99 to \$883.32 per month, July 1, 1966.

Carl R. Bogardus, Jr., M.D., promoted from Assistant Professor to Associate Professor of Radiology, and Chief, Division of Radiation Therapy, salary changed from \$1,608.33 to \$1,583.33 per month, July 1, 1966.

Barbara F. Braden, M.D., Instructor in Medicine, salary increased from \$354.17 to \$375 per month, July 1, 1966.

John G. Bruhn, Ph.D., Assistant Professor of Preventive Medicine, salary changed from \$1,025 to \$1,083.33 per month, July 1, 1966.

Lyle W. Burroughs, M.D., Assistant Clinical Professor of Pediatrics and Consultant in Allergy in Otorhinolaryngology, salary changed from \$150 per month to no remuneration, July 1, 1966.

Mary F. P. Carpenter, Ph.D., promoted from Assistant Professor of Research Biochemistry to Associate Professor of Biochemistry, July 1, 1966.

Raul Carubelli, Ph.D., title changed from Assistant Professor of Research Biochemistry to Assistant Professor of Biochemistry, July 1, 1966.

Lawrence A. Chitwood, Ph.D., Instructor in Pediatrics, salary changed from \$833.33 to \$125 per month, July 1, 1966. Also receives \$6,500 per year from National Allergy Fellowship.

Mervin L. Clark, M.D., Associate Professor of Medicine and of Psychiatry, salary increased from \$1,266.66 to \$1,416.66 per month, July 1, 1966.

Robert E. Coalson, Ph.D., Associate Professor of Anatomy, salary changed from \$875 to \$916.67 per month, July 1, 1966.

Mary Nell Cole, M.S., Assistant Professor of Nursing, salary changed from \$777.77 per month for 9 months to \$777.77 per month for 11 months, July 1, 1966.

July 14, 1966

8615

John P. Colmore, M.D., Professor of Medicine; given additional title of Professor of Pharmacology, salary changed from \$2,083.32 to \$2,041.65 per month, July 1, 1966.

Paul Taylor Condit, Ph.D., M.D., promoted from Assistant Professor to Associate Professor of Research Biochemistry, July 1, 1966.

Teresa M. Costiloe, M.S., Research Associate in Pediatrics, salary changed from \$475 to \$450 per month, July 1, 1966.

Quincy E. Crider, Ph.D., title changed from Research Associate to Instructor in Research Biochemistry, July 1, 1966.

Warren M. Crosby, M.D., Associate Professor of Gynecology-Obstetrics, salary increased from \$1,225 to \$1,325 per month, July 1, 1966.

Gordon H. Deckert, M.D., Assistant Professor of Psychiatry, salary changed from \$1,500 to \$1,416.66 per month, July 1, 1966.

Kurt M. Dubowski, Ph.D., Professor of Clinical Chemistry and Toxicology in the Departments of Pathology, Biochemistry, and Medicine; Associate Professor of Clinical Chemistry and Toxicology in Laboratory Medicine; Director of Toxicology Laboratories, University Hospitals, salary changed from \$1,416.66 to \$1,499.98 per month, July 1, 1966.

Thomas W. Dudley, D.D.S., Clinical Instructor in Dental Surgery, salary changed from \$100 to \$25 per month, July 1, 1966.

Robert Edelberg, Ph.D., Professor of Psychophysiotherapy in Psychiatry and Professor of Physiology, salary changed from \$1,083.33 to \$779.16 per month, July 1, 1966.

Joseph R. Elliott, Ph.D., Associate Professor of Laboratory Medicine, Director of Clinical Chemistry Laboratories, salary changed from \$1,333.32 to \$1,166.66 per month, July 1, 1966.

Floyd W. Emanuel, Ph.D., Assistant Professor of Communication Disorders, Coordinator of Cleft Palate Clinic, Speech and Hearing Center, salary changed from \$232.82 to \$1,132.74 per month, July 1, 1966.

Paul D. Erwin, M.D., promoted from Assistant Professor to Associate Clinical Professor of Surgery, July 1, 1966.

Laurence G. Gumbreck, Ph.D., Assistant Professor of Anatomy, salary changed from \$791.66 to \$833.33 per month, July 1, 1966.

Chesterfield G. Gunn, M.D., Associate Professor of Medicine and of Physiology, Assistant Professor of Preventive Medicine; resigned position in Preventive Medicine, salary changed from \$1,479.99 to \$1,666.65 per month, July 1, 1966.

July 14, 1966

8616

Mary N. Hall, M.S.S., Assistant Professor of Social Work in Psychiatry, Supervisor of Social Service and Chief Psychiatric Social Worker, salary changed from \$769.33 to \$425 per month, part time, July 1, 1966.

Irwin G. Hamburger, M.D., Associate Professor of Anesthesiology, salary changed from \$1,583.32 to \$1,166.66 per month, July 1, 1966.

James F. Hammarsten, M.D., Carl Puckett Professor of Pulmonary Diseases in Medicine, salary changed from \$2,083.33 to \$2,053.33 per month, July 1, 1966.

James W. Hampton, M.D., Assistant Professor of Medicine, salary changed from \$1,959.63 to \$1,416.66 per month, July 1, 1966.

Robert L. Harris, M.D., promoted from Clinical Assistant to Instructor in Pediatrics (Pediatric Fellow), July 1, 1966.

Ada T. Hawkins, M.S., Professor of Nursing, salary changed from \$833.33 per month for 9 months to \$833.33 per month for 11 months, July 1, 1966.

Paul C. Houk, M.D., Instructor in Medicine, salary changed from \$833.33 to \$583.33 per month, July 1, 1966.

R. Palmer Howard, M.D., promoted from Associate Professor of Research Medicine to Professor of the History of Medicine, July 1, 1966.

B. Connor Johnson, Ph.D., Professor and Chairman of Biochemistry, salary changed from \$1,833.33 to \$1,433.33 per month, July 1, 1966.

John M. Kalbfleisch, M.D., Instructor in Medicine, salary changed from \$1,041.67 to \$1,091.66 per month, July 1, 1966.

David E. Kemp, Ph.D., Assistant Professor of Psychiatry, salary changed from \$908.33 to \$966.66 per month, July 1, 1966.

M. Jack Keyl, Ph.D., Professor of Physiology, Research Associate Professor of Urology, salary changed from \$1,166.66 to \$1,333.32 per month, July 1, 1966.

Ronald S. Krug, Ph.D., Instructor in Medical Psychology in Psychiatry, salary changed from \$850 to \$883.30 per month, July 1, 1966.

Takashi Kusakari, M.D., Research Associate in Pharmacology, salary increased from \$500 to \$550 per month, July 1, 1966.

Yildez G. Kutkam, M.D., Assistant Professor of Anesthesiology, salary changed from \$1,191.65 to \$1,099.99 per month, July 1, 1966.

Boyd K. Lester, M.D., Associate Professor of Psychiatry, salary changed from \$562.50 to \$1,458.33 per month, July 1, 1966.

July 14, 1966

8617

Luiese H. Lynch, B.S., Assistant Professor of Physical Therapy, salary changed from \$600 to \$650 per month, July 1, 1966.

Richard A. Marshall, M.D., Associate Professor of Medicine, salary changed from -0- to \$83.33 per month, July 1, 1966.

James L. Mathis, M.D., Assistant Professor of Psychiatry, salary changed from \$1,400 to \$1,666.66 per month, July 1, 1966.

Nancy L. Mayes, B.S.N., Instructor in Nursing, salary changed from \$555.55 per month for 9 months to \$555.55 per month for 11 months, July 1, 1966.

Paul B. McCay, Ph.D., promoted from Assistant Professor of Research Biochemistry to Associate Professor of Biochemistry, July 1, 1966.

James A. Merrill, M.D., Professor of Gynecology-Obstetrics, Consultant Professor of Pathology, salary increased from \$2,099.99 to \$2,183.33 per month, July 1, 1966.

Millage C. Miller, III, Ph.D., Associate Professor of Preventive Medicine, salary changed from \$1,050 to \$1,133.33 per month, July 1, 1966.

Marie C. Mink, M.S., Assistant Professor of Nursing, salary changed from \$888.88 per month for 9 months to \$888.88 per month for 11 months, July 1, 1966.

David C. Mock, Jr., M.D., Associate Professor of Medicine; appointed Assistant Dean of Medical Student Affairs, salary changed from -0- to \$598.98 per month, 3/8 time, July 1, 1966.

Joanne I. Moore, Ph.D., Associate Professor of Pharmacology, salary increased from \$999.99 per month to \$1,083.34 per month, July 1, 1966.

Willard Brown Moran, Jr., M.D., promoted from Junior Clinical Assistant to Assistant Professor of Otorhinolaryngology, salary changed from -0- to \$1,166.66 per month, July 1, 1966.

Arnold M. Mordkoff, Ph.D., Assistant Professor of Psychiatry, salary changed from \$909.33 to \$866.66 per month, July 1, 1966.

Jiro Nakano, M.D., Ph.D., Associate Professor of Pharmacology, salary changed from \$1,249.99 to \$1,166.66 per month, July 1, 1966.

John P. Naughton, M.D., Assistant Professor of Medicine, salary changed from \$875 to \$1,375 per month, July 1, 1966.

Herbert A. Nishikawa, M.S., Assistant Professor of Nursing, salary changed from \$777.77 per month for 9 months to \$800 per month for 11 months, July 1, 1966.



July 14, 1966

8618

Thomas E. Nix, M.D., Assistant Professor of Dermatology, salary changed from \$437.50 to \$37.50 per month, July 1, 1966.

Marilyn Porter, M.D., Instructor in Pediatrics, salary changed from \$708.33 to no remuneration, July 1, 1966.

Eugene Pumpian-Mindlin, M.D., Professor of Psychiatry, salary changed from \$1,199.99 to \$1,874.98 per month, July 1, 1966.

Elizabeth R. Radcliffe, M.S., Instructor in Nutrition, School of Medicine; given additional title of Assistant Professor of Nutrition, School of Nursing, salary changed from \$3.12 per hour to \$500 per month, July 1, 1966.

Linda Resnick, B.S., Instructor in Physical Therapy, salary changed from \$625 to \$300 per month, part time, July 1, 1966.

James P. Rhoads, M.D., promoted from Clinical Assistant to Instructor in Medicine (PHS Trainee), salary changed from \$870 per month to -0-, July 1, 1966.

Charles W. Robinson, Jr., M.D., Instructor in Medicine; given additional title of Assistant Professor of Pharmacology, July 1, 1966.

George Victor Rohrer, M.D., Instructor in Medicine and Assistant Professor of Radiology, salary changed from \$600 to \$708.33, July 1, 1966.

Tomas Rubio, M.D., Instructor in Pediatrics, salary changed from \$725 to \$766.66 per month, July 1, 1966.

Marshall D. Schechter, M.D., Professor of Child Psychiatry and Consultant Professor of Pediatrics, salary changed from \$1,786.65 to \$1,979.20 per month, July 1, 1966.

John A. Schilling, M.D., Professor of Surgery, salary changed from \$1,833.33 to \$1,666.66 per month, July 1, 1966.

Robert A. Schneider, M.D., Professor of Medicine and Associate Professor of Psychiatry, salary changed from \$1,429 to \$1,920.82 per month, July 1, 1966.

L. Vernon Scott, Sc.D., Professor of Microbiology, salary increased from \$1,416.66 to \$1,483.32 per month, July 1, 1966.

J. Rodman Seely, M.D., Ph.D., Associate Professor of Pediatrics and of Biochemistry, salary changed from \$1,499.83 to \$1,583.32 per month, July 1, 1966.

Gunnar G. Sevelius, M.D., Research Associate in Medicine, salary increased from \$833.33 to \$916.66 per month, July 1, 1966.

July 14, 1966

8619

Hilli Sevelius, M.D., Instructor in Medicine, salary changed from \$722.22 to \$999.99 per month, July 1, 1966.

Margaret F. Shackelford, M.S., Associate Professor of Statistics in Preventive Medicine, salary changed from \$750 to \$800 per month, July 1, 1966.

Neil H. Sims, M.D., Assistant Professor of Pediatrics, salary changed from \$1,249.83 per month to no remuneration, July 1, 1966.

J. Darrell Smith, M.D., Professor of Pediatrics, salary increased from \$1,583.33 to \$1,591.66 per month, July 1, 1966.

William O. Smith, M.D., Professor of Medicine, salary changed from -0- to \$83.33 per month, July 1, 1966.

Allan J. Stanley, Ph.D., title changed from Professor of Physiology and Director of Animal House to Professor of Physiology, salary changed from \$1,791.64 to \$1,166.66 per month, July 1, 1966.

Richard E. Sternlof, Ph.D., Assistant Professor of Medical Psychology in Psychiatry, salary increased from \$883.33 to \$933.33 per month, July 1, 1966.

Frank W. Stewart, D.D.S., Associate Professor of Dental Surgery, Consulting Assistant Professor of Oral Surgery in Pathology, salary changed from \$200 to \$100 per month, July 1, 1966.

L. Clarke Stout, M.D., Assistant Professor of Medicine, salary changed from \$1,325 to \$1,041.66 per month, July 1, 1966.

Fumiro Suga, M.D., Ph.D., Research Associate in Otorhinolaryngology, salary changed from \$833.33 to \$600 per month, July 1, 1966.

Jaime T. Tapuz, M.D., Instructor in Anesthesiology, salary changed from \$999.99 to \$833.33 per month, July 1, 1966.

Webb M. Thompson, Jr., M.D., Associate Professor of Pediatrics, salary changed from \$616.66 to \$1,416.66 per month, July 1, 1966.

Povl W. Toussieng, M.D., Associate Professor of Child Psychiatry, salary changed from \$1,708.31 to \$2,083.32 per month, July 1, 1966.

Robert M. Wieneke, M.D., Assistant Professor of Psychiatry, salary changed from \$1,306.16 to \$1,749.98 per month, July 1, 1966.

William J. Williams, M.D., Instructor in Pathology, salary changed from \$500 per month to no remuneration, July 1, 1966.

July 14, 1966

8620

Michael Worona, M.D., Clinical Assistant in Medicine, salary changed from \$633.33 to \$750 per month, July 1, 1966.

Hsiu Y. T. Yang, Ph.D., Instructor in Pharmacology, salary increased from \$683 to \$716.66 per month, July 1, 1966.

**TERMINATIONS:**

Charles S. Benson, M.S.W., Clinical Assistant in Psychiatric Social Work in Psychiatry, June 30, 1966.

Cosmelito R. Cagas, M.D., Clinical Assistant in Pediatrics, June 30, 1966.

Avery Paul Compton, M.D., Clinical Assistant in Medicine, June 1, 1966.

Jack T. Dancer, M.D., Junior Clinical Assistant in Surgery, July 31, 1966.

Delmar L. Gheen, M.D., Clinical Assistant in Pediatrics, June 30, 1966.

Serge B. Martel, M.D., Clinical Assistant in Pediatrics, June 30, 1966.

Barbara R. Milacek, Assistant Professor of Physical Therapy, June 30, 1966.

Paul D. Riley, M.D., Clinical Assistant in Pediatrics, June 30, 1966.

Robert M. Sayre, M.A., Research Associate in Dermatology, August 31, 1966.

David M. Selby, M.D., Junior Clinical Assistant in Surgery, July 31, 1966.

Approved.

Since the last meeting, two telephone polls of the Regents were conducted concerning the reappointment of Dr. Anton Lindner, one on June 10 and the other on June 22. The last poll was a result of a letter from Mr. Harold Hines, attorney for Dr. Lindner dated June 14, 1966, and a letter from Dean Dennis of June 20, 1966.

Mr. Hines suggested in his letter three plans for the possible reappointment of Dr. Lindner. Dean Dennis found Plan I and Plan III unacceptable. He recommended for various reasons that Plan II be adopted. In his letter of recommendation he stated:

"\* \* \*Although reluctant to accept any of the suggestions submitted, I believe that the best interests of the University will be served if we avoid possible litigation. For this reason, I am willing to accept the second alternative proposal,\* \* \*"

Plan II is as follows:

"1. Dr. Lindner will immediately submit his written resignation at the University of Oklahoma Medical Center to become effective on June 30, 1967 and will not pursue any further action regarding recognition of tenure or to maintain his position at the University of Oklahoma Medical Center subsequent to June 30, 1967; and,

"2. In the event the present research grant funds from the NIH are extended and continued, Dr. Lindner will support himself and continue his research activities entirely from such research grant funds subject to approval by appropriate authorities.

"The actions by Dr. Lindner as set forth in 1 and 2 above are conditioned upon the following:

"1. That Dr. Lindner receives re-appointment of his present position at the University of Oklahoma Medical Center for the period beginning July 1, 1966 and ending June 30, 1967;

"2. That the proper administrative officials of the University of Oklahoma Medical Center execute the necessary papers for extension and continuation of the NIH research grant fund and forward same to the NIH on or before the present extended due date without prejudice to Dr. Lindner's position.

"3. That the University of Oklahoma Medical Center permit Dr. Lindner to transfer the NIH research grant No. A1 04038-06 (which represents approximately only 30% of the total trust funds which are under his administrative control) to another institution at the proper time;

"4. That the University of Oklahoma Medical Center give assistance to Dr. Lindner in relocating at another institution with appropriate letters of recommendation."

In the telephone poll of June 22, the Regents voted unanimously to accept a modified Plan II subject to the following conditions:

1. The letter of recommendation must be one which the Dean of the School of Medicine believes to be appropriate, and

2. The letter of resignation of Dr. Anton Lindner shall omit any references to the Director of the School of Cytotechnology and the Cytology Laboratory, and should be submitted prior to July 14, 1966.

Dean Dennis reported that Dr. Lindner had failed to comply with the offer of the Regents and that his letter of resignation effective June 30, 1967, had not been received. The Regents agreed that since Dr. Lindner had not submitted his resignation it must be assumed that he is unwilling to accept the modified Plan II. On motion by Regent Little,

it was unanimously voted to rescind the telephone vote taken of the Regents on June 22, 1966.

On motion by Regent Sparks, it was unanimously voted to reaffirm the unanimous telephone vote taken on June 10, 1966, reappointing Dr. Lindner for the period July 1, 1966 through August 13, 1966 and that he be terminated as of August 13, 1966. This termination is effective one year from the date he was notified of his suspension by President Cross on August 13, 1965.

The By-Laws, Rules and Regulations applicable to the medical staff of the University of Oklahoma Hospitals as approved by the Faculty of the School of Medicine at a meeting on June 6, 1966, are shown on the following pages.

President Cross recommended the By-Laws, Rules and Regulations as adopted by the Faculty be approved.

Approved on motion by Regent Calvert.

In April 1966 (p. 8501), President Cross submitted to the Regents without recommendation a "Proposal for the Establishment of a School of Health," so that the Regents might acquaint themselves with the general idea and purposes of the proposal.

He said since that time the interrelationships involved in this proposal, between the Medical Center and the Norman Campus (especially one segment of the School of Civil Engineering and Environmental Science), have been more carefully worked out, and a revised proposal has been produced and has been approved by the Director of the Medical Center and Dean of the College of Engineering.

Enclosed with the agenda for this meeting was a revised version of the proposal. In order to give an approved structure for moving this undertaking forward, President Cross recommended approval in principle of the following recommendations, with the understanding that each of the various recommendations will be put into effect as it becomes feasible:

1. Establish a School of Health within the structure of the University and situated within the University of Oklahoma Medical Center.
2. Establish within this School of Health the departments and activities as shown on the following page.
3. Appoint a Dean for the School of Health to allow immediate development of these plans.

**BYLAWS, RULES AND REGULATIONS**

applicable to the

**MEDICAL STAFF**

**The University of Oklahoma Hospitals  
Oklahoma City, Oklahoma**

The University of Oklahoma Hospitals are operated by the Board of Regents of the University of Oklahoma as the teaching units of the University Medical Center under the laws of the State of Oklahoma and for the purpose of carrying out their educational, research, and clinical responsibilities in the general field of health services. The Director of the Medical Center is responsible to the President of the University of Oklahoma for the function of these hospitals within the policies set forth by the Board of Regents of the University of Oklahoma.

**BYLAWS, RULES AND REGULATIONS**  
**of the Medical Staff of the University of Oklahoma Hospitals**  
**Oklahoma City, Oklahoma**

**PREAMBLE**

Recognizing that education, research and the care of patients are served best by a concerted effort, the physicians and dentists practicing in the University of Oklahoma Hospitals hereby organize themselves in conformity with the Bylaws, Rules and Regulations hereinafter stated.

For the purpose of these Bylaws, the term "medical staff" shall be interpreted to include all physicians and dentists privileged to attend patients in the University of Oklahoma Hospitals.

Whenever the term "governing body" appears it shall be interpreted to refer to the Board of Regents of the University of Oklahoma.

**ARTICLE 1**

**NAME**

The name of this organization shall be the Medical Staff of the University of Oklahoma Hospitals.

**ARTICLE 11**

**PURPOSE**

The purpose of this organization shall be:

1. To insure that all patients admitted to the University of Oklahoma Hospitals or treated in their outpatient departments shall receive



the best quality of medical care available.

2. To maintain in the University of Oklahoma Hospitals a milieu of patient care, diagnosis and treatment best calculated to provide a clinical laboratory for the basic science instruction, a practical and theoretical educational experience in clinical medicine, and special training in the allied health specialties.
3. To develop, to apply and to maintain the highest professional, educational and scientific standards in the field of health services.
4. To recommend and to implement hospital policies that will create a climate in which scientific, educational, and administrative problems may be discussed by the medical staff with members of the hospital administration, and on occasion with representatives of the governing body.
5. To collaborate with others in the fields of endeavor similiarly engaged for the promotion of health and advancement of knowledge in the understanding of health and disease, and to encourage support for the same.
6. To provide where necessary the the health services for personnel of other educational and governmental institutions through the State of Oklahoma.
7. To develop the special facilities and training in the various medical and allied health disciplines, thus serving as a referral and liaison center for health needs.

ARTICLE 111

MEMBERSHIP

Section 1.

Qualification. To qualify as a member of the medical staff, each physician and dentist must hold a faculty appointment in the University of Oklahoma School of Medicine.

Section 11.

Terms of Appointment. Appointment shall be made by the governing body of the hospital after recommendation of the Credentials Committee of the Medical Staff and the Director of the Medical Center, and will be for the period July 1 through June 30 of the following year. Appointment made during the year shall extend to the following June 30.

Temporary privileges may be granted to a candidate of the medical staff by the administrator of the hospitals, acting on behalf of the governing body. Such temporary privileges shall be granted only after the candidate has been recommended for appointment by the chief of the service concerned and with the approval of the Executive Committee. The temporary appointment shall not continue for more than three months unless the Executive Committee recommends an extension due to unusual circumstances.

Section 111.

Procedure of Appointment

1. Application for appointment to the medical staff shall be made in writing to the chief of the appropriate clinical service or division.

The application then shall be forwarded to the Director of the Medical Center along with the recommendation of the chief of service. The Director after review of the Credentials Committee, shall submit the application to the governing body for acceptance or rejection.

2. The governing body shall notify the Director of the Medical Center of its action regarding the application. In the event of appointment, the application along with the letter of appointment shall be forwarded to the Administrator of the University Hospitals.
3. The physician or dentist appointed to the medical staff shall have a title which shall usually, but not necessarily, be comparable to his faculty rank for example: Head of Department (or Division when appropriate) - Physician-in-Chief, Pediatrician-in-Chief; Professor - Physician, Surgeon, Pediatrician; Associate Professor - Associate Physician, Associate Surgeon, Associate Pediatrician; Assistant Professor or member with lesser rank - Assistant Physician, Assistant Surgeon, Assistant Pediatrician.
4. Appointment to the medical staff shall be reviewed each year by the appropriate chiefs of the clinical services.

In any case in which the Director of the Medical Center does not recommend reappointment, he shall notify the physician or dentist concerned and shall give him the opportunity of appearing before the

Credentials Committee of the Medical Staff.

After a hearing as outlined above, the Committee shall file a report with the Director of the Medical Center.

The governing body shall have the final responsibility to terminate or to alter the appointment of a medical staff member on the recommendation of the Director of the Medical Center and the Hospital Board.

5. Each medical staff member shall be expected, unless excused for just cause, to attend at least seventy-five percent of the required departmental and general staff meetings: shall be willing, if requested, to assume clinical teaching and service responsibilities as assigned by the chief of service; and shall be available for consultation or participation at clinical conferences.
6. Appointment to the medical staff shall confer upon the appointee the privilege and responsibility to function professionally and administratively to the best of his ability in the fulfillment of the mission of the University of Oklahoma Hospitals, subject to the supervision and authority of the chief of his clinical service and the policies of the particular department and the hospitals.
7. Medical staff members may request consultation of any type when it is felt appropriate and necessary.
8. The medical staff member shall be charged with the responsibility for professional, educational, ethical, scientific, and clinical matters in the operations of the University of Oklahoma Hospitals.

9. Upon appointment, a member shall, after reading, sign the Bylaws of the Medical Staff signifying his agreement to be governed by them.

#### ARTICLE IV

#### CLINICAL SERVICES AND DIVISIONS

##### Section 1.

The clinical services and divisions of the University of Oklahoma Hospitals shall correspond to the clinical departments and divisions of the University of Oklahoma School of Medicine as designated by the governing board.

##### Section 11.

As of the date of adoption of these Bylaws, Rules and Regulations, the departments and divisions are as follows:

- Department of Medicine
  - Division of Neurology
- Department of Laboratory Medicine
- Department of Dermatology
- Department of Gynecology & Obstetrics
- Department of Ophthalmology
- Department of Otorhinolaryngology
- Department of Pathology
- Department of Pediatrics
- Department of Psychiatry, Neurology, and Behavioral Sciences
- Department of Radiology
  - Division of Radiation Therapy
- Department of Surgery
  - Division of Oral Surgery
  - Division of Neurosurgery
  - Division of Pediatric Surgery
  - Division of Thoracic and Cardiac Surgery
  - Division of Plastic Surgery
- Department of Orthopedic and Fracture Surgery
- Department of Urology
- Department of Anesthesiology
- Department of Preventive Medicine and Public Health

Section 111. Organization of Clinical Services and Divisions

1. Each service and division shall be organized as part of the staff as a whole and shall have a head responsible for the functioning of his service or division, and who shall have general supervision over the clinical work falling within his area of responsibility, whether it be departmental or private.
2. Each service or division may meet separately but such meetings shall not release the members from their obligation to attend the general meetings of the medical staff as provided in Article 111 of these Bylaws.
3. Each service and division may establish its own rules and regulations for conduct of patient care, provided that they are consistent with the Rules and Regulations of the Medical Staff.

ARTICLE V

OFFICERS AND COMMITTEES

Section 1. Officers

1. A Chief of Staff shall be appointed by the Director of the Medical Center from a group of three of the members of the Hospital Board, nominated by that Board. He shall serve for one year as the Associate Chief of Staff and then for two years as the Chief of Staff, the appointment commencing on a July 1.

The Chief of Staff shall serve as Chairman of the Executive Committee and of the Hospital Board. He shall be responsible for the implementation of professional, educational, and scientific policies as established by the Hospital Board.

Section 11. Committees

Committees of the Medical Staff shall be standing and special. All committees shall be appointed by the Director of the Medical Center upon recommendation of the Hospital Board of the Medical Staff.

1. Hospital Board. The Hospital Board shall consist of the heads of all the clinical services corresponding to the clinical departments of the School of Medicine. The Director of the Medical Center or his representative shall serve as a member without vote, as shall the Hospital Administrator. Other members may be appointed to the Hospital Board as deemed necessary by the Director and approved by the Hospital Board.

Fifty percent of the voting membership shall constitute a quorum. The Hospital Board representing the medical staff shall be responsible to the governing body for the level of professional care and treatment of patients in accordance with the highest standards of medical science. The Hospital Board shall keep the governing body advised, through the Director of the Medical Center, concerning matters pertaining to the professional, educational, and scientific activities of the University of Oklahoma Hospitals and shall make suggestions and recommendations for their improvement. It shall meet monthly during the academic year.

2. Executive Committee. The Executive Committee of the Hospital Board shall consist of no more than eight (8) members of the Hospital Board, appointed by the Director of the Medical Center, who, as well as the Hospital Administrator

shall serve as a member of the Committee without vote.

The composition of the Executive Committee shall be made up as follows: The Head of the Service of Gynecology and Obstetrics; the Head of the Service of Medicine; the Head of the Service of Psychiatry, Neurology, and Behavioral Sciences; the Head of the Service of Surgery; the Head of the Service of Pediatrics; and the Head from one of the four services of Anesthesiology, Radiology, Laboratory Medicine, or Pathology.

If the Chief of Staff, when appointed, is one of the above six (6) named members of the Board, the seventh member shall be elected from one of the other specialty services by those specialty service members. Otherwise, the Chief of Staff shall serve as the seventh member.

In those years in which an Associate Chief of Staff serves, the Committee membership may be increased to eight.

The Executive Committee shall meet regularly to review and to make recommendations on matters affecting the professional, educational, and scientific policies of the University Hospitals. Between meetings of the Hospital Board, it shall act for the Hospital Board. Policy decisions of the Executive Committee shall be reviewed and approved by the Hospital Board at its next meeting.

3. Credentials Committee. The Executive Committee acting as the Credentials Committee shall investigate all applicants for appointment



to the medical staff and shall make recommendations in conformity with the provisions of Article 111 of these Bylaws.

The Credentials Committee shall investigate any breach of ethics and shall make recommendations to the Director of the Medical Center.

4. Joint Conference Committee. The Executive Committee shall represent the medical staff at meetings with the three members of the University of Oklahoma Board of Regents who constitute the Regents' Medical Center Committee. This group shall also include the Director of the Medical Center, the Chairman of the Faculty Board, and the Administrator of the University Hospitals. It shall convene at the invitation of the Regents' Medical Center Committee or the Director of the Medical Center.
5. Other Committees. Other standing or special committees may be appointed as required to carry out properly the duties of the medical staff. Such committees shall confine their work to that for which they were appointed and report to the Hospital Board. They shall not have the power of action unless such power is specifically granted by the motion which created the committee.

## ARTICLE XI

### MEETINGS

#### Section 1.

Regular Meetings. Regular meetings of the medical staff shall be held two

times annually, at which meetings the proceedings and actions of the Hospital Board shall be presented.

Section 11.

Service Meetings. Regular meetings of each service shall be held at least monthly. Reports of service activities shall be kept on file in the Office of Administrator.

Section 111.

Special Meetings. Special meetings of the medical staff may be called at any time by the Director of the Medical Center, or by the Chief of Staff, either at the request of the Hospital Board or upon written request to the Executive Committee by twenty (20) members of the medical staff, stating the purpose of the meeting. At any special meeting no business shall be transacted except as stated in the notice calling the meeting. Notice of any meeting shall be given members of the medical staff at least twenty-four (24) hours before the time set for the meeting.

Section 1V.

Quorum. Fifty (50) members of the medical staff shall constitute a quorum.

Section V.

Agenda. The agenda at any regular meeting shall be: (1) call to order, (2) reading of the minutes (in summary if desired) of the last regular and all intervening special meetings, (3) unfinished business, (4) report of the proceedings and actions of the Hospital Board, (5) communications and

and special reports, (6) new business, (7) discussion and recommendations for improvement of the professional, educational, or scientific work of the hospitals, (8) adjournment.

Meetings shall be conducted under the most current revision of Roberts Rules of Order.

#### ARTICLE V11

##### RULES AND REGULATIONS

The medical staff shall adopt rules and regulations as may be necessary for the proper conduct of its work. Such rules and regulations shall be a part of these Bylaws, subject however to more facile change which can be undertaken without previous notice at any meeting of the Hospital Board by two-thirds vote of those present and voting, or at any regular medical staff meeting by a two-thirds vote of the membership present and voting. Such Rules and Regulations shall become effective when approved by the governing board. The Hospital Administrator is responsible for notifying all individuals concerned when approved new rules and regulations are affected. The chief of each clinical service shall be responsible for instructing the individuals of his service regarding such new rules and regulations.

#### ARTICLE V111

##### AMENDMENT OF BYLAWS

The Bylaws may be amended at any regular or special meeting of the medical staff after prior notice has been given at any regular meeting of the medical staff, and the proposed amendment has been circulated in writing to the medical staff. Such notices shall be referred to a special committee appointed by the Chief of Staff.

This committee shall report at the next regular meeting. A two-thirds vote of the medical staff membership present and voting shall be required for adoption. Such amendments shall become effective when approved by the Hospital Board.

#### ARTICLE 1X

#### ADOPTION

These Bylaws shall be adopted at a regular meeting of the Medical Staff. They shall replace any previous Bylaws, Rules and Regulations and shall become effective when approved by the Board of Regents of the University of Oklahoma. They shall, when adopted and approved, be equally binding on the Board of Regents and the medical staff.

Revised and adopted by the Medical Staff of the University of Oklahoma Hospitals.

RULES AND REGULATIONS OF THE MEDICAL STAFF  
OF THE UNIVERSITY OF OKLAHOMA HOSPITALS

I. ADMISSIONS AND DISCHARGES

A. ADMISSION TO THE HOSPITALS AND OUTPATIENT CLINICS

IT IS THE POLICY OF THE UNIVERSITY HOSPITALS TO ACCEPT PATIENTS WITHOUT REGARD TO RACE, RELIGION OR CREED, OR ABILITY TO PAY FOR SERVICES RECEIVED. FURTHER, BECAUSE OF THE HOSPITALS' ROLE IN THE EDUCATIONAL PROGRAM OF THE UNIVERSITY OF OKLAHOMA MEDICAL CENTER, IT IS THE POLICY THAT PATIENTS MAY BE SELECTED ON THE BASIS OF THE CONTRIBUTION THEY CAN MAKE TO THE EDUCATIONAL PROGRAM, WITH THE EXCEPTION OF THOSE CASES WHICH PRESENT A TRUE EMERGENCY AND WHICH SHOULD RECEIVE MEDICAL CARE WITHOUT CONSIDERATION OTHER THAN THEIR IMMEDIATE NEED.

IT SHALL BE THE RESPONSIBILITY OF THE UNIVERSITY HOSPITALS TO ASSESS THE PATIENT'S ABILITY TO PAY FOR MEDICAL CARE.

PATIENTS SHALL BE EITHER PRIVATE OR DEPARTMENTAL.

A PRIVATE PATIENT IS ONE WHO IS ASSIGNED TO A MEMBER OF THE ACTIVE MEDICAL STAFF, WHO HAS ASSUMED PERSONAL RESPONSIBILITY FOR THE MEDICAL CARE OF THIS PATIENT.

B. INPATIENTS

1. POLICY AND PROCEDURES FOR ADMISSION AND DISCHARGE OF PATIENTS TO THE HOSPITALS, AND THE OUTPATIENT DEPARTMENT, AND THE EMERGENCY-RECEIVING ROOMS SHALL BE FORMULATED BY THE JOINT ACTION OF THE HOSPITAL BOARD AND THE HOSPITAL ADMINISTRATOR.
2. ALL PATIENTS SHALL BE ADMITTED TO THE HOSPITALS THROUGH THE ADMITTING DEPARTMENT. A PROVISIONAL DIAGNOSIS SHALL BE STATED, OR MADE UPON

EXAMINATION EITHER IN THE OUTPATIENT DEPARTMENT OR THE EMERGENCY-RECEIVING ROOMS. IN CASE OF AN EMERGENCY THE PROVISIONAL DIAGNOSIS SHALL BE STATED AS SOON AFTER ADMISSION AS POSSIBLE.

3. EACH PATIENT ADMITTED TO THE HOSPITAL SHALL BE ASSIGNED TO THE SERVICE CONCERNED WITH THE TREATMENT OF THE DISEASE WHICH NECESSITATED ADMISSION. ADMISSION TO ANOTHER SERVICE SHALL ONLY BE BY MUTUAL AGREEMENT OF THOSE SERVICES INVOLVED.
4. THE ADMISSION AND DESIGNATION OF SERVICE FOR ALL DEPARTMENTAL PATIENTS SHALL BE RECOMMENDED BY THE RESIDENT - INTERN STAFF ACTING FOR THE CHIEFS AND THE ATTENDING STAFF OF THE SEVERAL SERVICES.
5. PHYSICIANS ADMITTING AND CARING FOR PATIENTS SHALL BE RESPONSIBLE FOR GIVING SUCH INFORMATION IN EACH CASE AS MAY BE NECESSARY TO HELP INSURE THAT THE PATIENT IS NOT A SOURCE OF DANGER TO OTHERS AND TO HELP PROTECT THE PATIENTS FROM SELF-HARM WHILE HOSPITALIZED.
6. PEDIATRIC CASES ADMITTED TO THE CHILDREN'S HOSPITAL SHALL HAVE AN INFECTIOUS DISEASE EVALUATION BEFORE BEING ADMITTED TO THE FLOOR.
7. ALL PATIENTS SHALL BE UNDER THE DIRECT CARE OR SUPERVISION OF A MEMBER OF THE MEDICAL STAFF.
8. PATIENTS ADMITTED TO ORAL SURGERY SHALL BE UNDER THE RESPONSIBILITY OF THE GENERAL SURGERY SERVICE, UNLESS THE ATTENDING ORAL SURGEON IS A LICENSED PHYSICIAN.
9. PRIVATE PATIENTS APPLYING FOR ADMISSION WHO HAVE NO PERSONAL PHYSICIAN ON THE MEDICAL STAFF SHALL BE ASSIGNED TO MEMBERS ON DUTY OR AS ARRANGED BY POLICY OF EACH SERVICE.
10. NO PRIVATE PATIENT ADMITTED SHALL BE TRANSFERRED TO DEPARTMENTAL SERVICE EXCEPT WITH THE CONCENT OF THE CHIEF OF SERVICE CONCERNED OR HIS REPRESENTATIVE.

11. PATIENTS MAY BE GRANTED LEAVES FROM THE HOSPITAL BY WRITTEN ORDER FOR ONE DAY OR FOR LESS THAN TWO DAYS ON WEEKENDS.
12. NO PATIENT SHALL BE DISCHARGED FROM THE HOSPITAL WITHOUT THE WRITTEN ORDER OF A PHYSICIAN OR DENTIST ON THE SERVICE AND WITHOUT THE APPROVAL OF THE PERSONAL PHYSICIAN OR DENTIST ON PRIVATE CASES.
13. AT THE TIME OF DISCHARGE THE FRONT SHEET OF THE PATIENT'S RECORD MUST BE COMPLETED AND SIGNED BY A PHYSICIAN ON THE SERVICE BEFORE THE RECORD SHALL LEAVE THE WARD.

C. EMERGENCY ROOM

1. NO PATIENT SEEN IN THE EMERGENCY ROOM SHALL BE DISCHARGED FROM THE EMERGENCY ROOM WITHOUT BEING SEEN BY A PHYSICIAN. A RECORD OF THE CASE SHALL BE WRITTEN BY THE PHYSICIAN AND FILED AS PART OF THE PATIENT'S TOTAL MEDICAL RECORD.

D. OUTPATIENT CLINIC

1. ALL APPLICATIONS OF NEW PATIENTS SHALL BE SCREENED FOR THEIR EDUCATIONAL VALUE BY THE OUTPATIENT EVALUATIONS COMMITTEE UNLESS SELECTED BY THE STAFF.
2. NEW PATIENTS WHOSE APPLICATIONS ARE APPROVED BY THIS COMMITTEE SHOULD PREFERABLY BE WORKED UP THROUGH THE GENERAL MEDICAL OR PEDIATRIC DIAGNOSTIC CLINIC, THEN REFERRED IF INDICATED TO OTHER CLINICS OR FOR ADMISSION.
3. REFERRALS TO A SPECIALTY CLINIC SHALL BE HONORED AT THE FIRST AVAILABLE DATE OF THAT CLINIC.
4. PATIENTS MAY BE DIRECTLY ASSIGNED BY THE COMMITTEE TO A SERVICE CLINIC BY THE NATURE OF THE CASE, OR IF A LIMIT FOR TEACHING PURPOSES IS EXCEEDED.

5. PATIENTS FROM THE HEALTH SERVICE MAY BE DIRECTLY REFERRED TO A SERVICE CLINIC WITHOUT GOING THROUGH A GENERAL DIAGNOSTIC CLINIC.

## II. MEDICAL RECORDS

1. THE CHIEF OF SERVICE OR HIS REPRESENTATIVE OR THE ATTENDING PRIVATE PHYSICIAN OR DENTIST SHALL BE RESPONSIBLE FOR THE PREPARATION AND SIGNATURE OF A COMPLETE MEDICAL RECORD FOR EACH PATIENT.
2. THIS RECORD SHALL USUALLY INCLUDE IDENTIFICATION DATA; HISTORY OF PRESENT ILLNESS; REVIEW OF SYSTEMS; PERSONAL PAST HISTORY, FAMILY HISTORY; PHYSICAL EXAMINATION; PROVISIONAL DIAGNOSIS; TREATMENT PROCEDURES; PROGRESS NOTES; SPECIAL REPORTS, SUCH AS CONSULTATION, CLINICAL LABORATORY, X-RAY, OPERATIVE, PATHOLOGICAL, AND OTHERS; FINAL DIAGNOSIS, WITH NOMENCLATURE; SUMMARY TO INCLUDE CONDITION AND DISPOSITION ON DISCHARGE; AND FOLLOW-UP CLINIC AND AUTOPSY REPORTS WHEN AVAILABLE. NOTE: IT IS RECOMMENDED THAT PRIVATE CLINIC NOTES BE KEPT AS PART OF THE MEDICAL RECORD FOLDER.
3. EACH PATIENT ADMITTED TO THE HOSPITAL SHALL HAVE LABORATORY WORK AS INDICATED BY THE HISTORY AND PHYSICAL EXAMINATION. IN MOST INSTANCES THE MINIMUM WILL CONSIST OF A HEMATOCRIT OR HEMOGLOBIN, A WHITE BLOOD COUNT, URINALYSIS, AND A CHEST X-RAY.
4. ALL REPORTS PREPARED IN THE HOSPITAL FOR THE RECORD SHALL BE IN THE ORIGINAL FORM.
5. NO MEDICAL RECORD SHALL BE FILED UNTIL IT IS COMPLETED EXCEPT FOR LABORATORY REPORTS WITHOUT AN ORDER OF THE MEDICAL RECORDS COMMITTEE.
6. A COMPLETE HISTORY AND PHYSICAL EXAMINATION SHALL IN ALL CASES BE WRITTEN BY A PHYSICIAN WITHIN TWENTY-FOUR (24) HOURS AFTER ADMISSION OF THE PATIENT. WHEN A HISTORY AND PHYSICAL EXAMINATION IS PREPARED BY A JUNIOR OR SENIOR MEDICAL STUDENT, IT SHALL NOT BE CONSIDERED



PART OF THE RECORD UNLESS SIGNED BY AN ATTENDING PHYSICIAN OR HOUSE OFFICER. THIS DOES NOT SUBSTITUTE FOR THE HISTORY AND PHYSICAL EXAMINATION WRITTEN BY A PHYSICIAN.

7. IF THE PATIENT IS RE-ADMITTED WITHIN A TWO WEEK PERIOD OF TIME FOR THE SAME CONDITION WITHOUT A MARKED CHANGE OF FINDINGS, THE PREVIOUS HISTORY AND PHYSICAL EXAMINATION WITH AN INTERVAL NOTE MAY SUFFICE.
8. RECORDS OF ALL PATIENTS ARE SUBJECT TO REVIEW FOR AUDIT OF MEDICAL CARE AS WELL AS FOR THE QUALITY AND COMPLETENESS OF THE RECORD BY THAT INDIVIDUAL SERVICE OR THROUGH THE RECORD COMMITTEE.
9. IN CASE OF RE-ADMISSION OF A PATIENT, PRIVATE OR DEPARTMENTAL, ALL PREVIOUS HOSPITAL, OUTPATIENT, AND EMERGENCY ROOM RECORDS SHALL BE AVAILABLE AS A UNIT FOR THE USE OF THE STAFF.
10. ACCESS TO ALL MEDICAL RECORDS OF ALL PATIENTS SHALL BE AFFORDED TO STAFF PHYSICIANS AND FACULTY FOR BONA FIDE STUDY AND RESEARCH, CONSISTENT WITH PRESERVING THE CONFIDENTIALITY OF PERSONAL INFORMATION CONCERNING THE INDIVIDUAL PATIENTS, IN THE EVENT THAT CLINICAL STUDIES INVOLVE PATIENTS OF OTHER SERVICES THE CHIEF OF THE SERVICE INVOLVED SHALL BE NOTIFIED AS WELL AS THE RESPONSIBLE PHYSICIAN FOR PARTICULAR CASES WHEN APPROPRIATE.
11. ALL MEDICAL RECORDS ARE THE PROPERTY OF THE HOSPITAL AND SHALL NOT BE REMOVED FROM THE PREMISES UNDER ANY CIRCUMSTANCES WITHOUT THE WRITTEN PERMISSION OF THE HOSPITAL ADMINISTRATOR.
12. AS MEDICAL RECORDS ARE CONSIDERED CONFIDENTIAL PRIVILEGED DOCUMENTS, INFORMATION CONTAINED IN THEM SHALL BE RELEASED ONLY TO APPROPRIATE INDIVIDUALS CONCERNED WITH THE CARE OF SUCH PATIENTS AND SHALL NOT BE RELEASED TO OTHERS WITHOUT AUTHORIZATION OF THE CHIEF OF SERVICE OR HIS DELEGATE.

13. THE MEDICAL RECORDS SHALL BE RETAINED FOR SCIENTIFIC PURPOSES, EITHER IN THE ORIGINAL OR REPRODUCED FORM FOR A PERIOD OF AT LEAST 25 YEARS.

### III. CONSULTATIONS

1. THE PATIENT'S PHYSICIAN IS RESPONSIBLE FOR REQUESTING CONSULTATIONS WHEN INDICATED. HOWEVER, AT THIS UNIVERSITY HOSPITAL CONSULTATIONS ARE AUTOMATICALLY PROVIDED FOR MANY PATIENTS THROUGH THE TEACHING PROGRAMS AND SERVICE COVERAGES.  
  
IT IS THE DUTY OF THE CHIEF OF SERVICE THROUGH HIS HOUSE STAFF TO MAKE CERTAIN THAT AS A POLICY MEMBERS OF THE STAFF DO CALL FOR CONSULTATIONS AS NEEDED, AND THAT DEPARTMENTAL PATIENTS ARE OFFERED CONSULTATION COVERAGE.
2. A WRITTEN OPINION SIGNED BY THE CONSULTANT SHALL BE INCLUDED IN THE PROGRESS NOTES OF THE MEDICAL RECORD.
3. ON RECEIVING A REQUEST, A CONSULTANT SHALL BE EXPECTED TO MAKE AT LEAST FIRST CONTACT WITH THE PATIENT WITHIN 24 HOURS.
4. FOR DEPARTMENTAL CASES IN WHICH CONSULTATION IS REQUESTED THE CONSULTANT SHALL GIVE HIS SERVICES WITHOUT CHARGE.
5. CONSULTATION PROCEDURES:
  - A. CONSULTATIONS MAY BE REQUESTED OF ANOTHER SERVICE BY THE RESIDENT OR THE ATTENDING PHYSICIAN. THE CONSULTANT ASSIGNED MAY BE EITHER A RESIDENT OR AN ATTENDING PHYSICIAN, OR BOTH, AS DETERMINED BY THE CHIEF OF SERVICE FROM WHICH CONSULTATION HAS BEEN REQUESTED.
  - B. CONSULTATION BY ATTENDING OR SPECIFIC MEDICAL STAFF MEMBERS AND OUTSIDE CONSULTANTS MAY BE REQUESTED ONLY AT THE ATTENDING STAFF LEVEL.

- C. THE CONSULTANT'S RESPONSIBILITY IS TO RECOMMEND TO AND GUIDE THE PHYSICIAN IN CHARGE OF THE CASE WITH REFERENCE TO THE QUESTION OR CONDITION FOR WHICH CONSULTATION IS REQUESTED.
- D. WHEN A PHYSICIAN HAS ACTED AS CONSULTANT IN AN ILLNESS, HE CANNOT BECOME THE PHYSICIAN IN CHARGE OF THE CASE UNLESS THE PATIENT IS TRANSFERRED TO THE CONSULTING SERVICE BY MUTUAL CONSENT.
- E. IF THE PHYSICIAN IN CHARGE AND THE CONSULTANT DO NOT AGREE ON THEIR VIEW OF THE CASE, A SECOND CONSULTANT MAY BE CALLED AT THE ATTENDING STAFF LEVEL BY THE PHYSICIAN IN CHARGE. IF THE PHYSICIAN IN CHARGE AND THE FIRST CONSULTANT ARE HOUSE STAFF PHYSICIANS, EACH SHALL REFER THE MATTER TO THEIR RESPECTIVE ATTENDING PHYSICIAN ON SERVICE OR THE CHIEF OF SERVICE.
- F. A TRANSFER OF PROFESSIONAL RESPONSIBILITY WILL BE ACCOMPANIED BY TRANSFER OF THE PATIENT TO THE SERVICE AREA OF THE ACCEPTING SERVICE IF POSSIBLE OR AS SOON AS PRACTICAL.

#### IV. ORDERS

1. ALL ORDERS FOR TREATMENT SHALL BE WRITTEN AND SIGNED BY A PHYSICIAN. EMERGENCY VERBAL ORDERS SHALL BE WRITTEN AND SIGNED AS SOON AS POSSIBLE. ORDERS DICTATED OVER THE TELEPHONE MUST BE WRITTEN AND SIGNED BY A REGISTERED NURSE, PER THE DICTATING PHYSICIAN'S NAME; THE LATTER MUST SIGN SUCH AN ORDER AT HIS NEXT VISIT TO THE FLOOR.
2. DRUGS LISTED IN THE PHARMACY CATALOGUE SHALL MEET NATIONAL STANDARDS AND SHALL BE ORDERED BY THEIR GENERIC NAMES WHENEVER POSSIBLE.
3. MEDICATION ORDERS ON DEPARTMENTAL PATIENTS ARE LIMITED TO THE USE OF DRUGS APPROVED BY THE PHARMACY COMMITTEE AND LISTED IN THE PHARMACY CATALOGUE. IF AN ALTERNATE OR NEW UNLISTED DRUG IS URGENTLY NEEDED FOR A DEPARTMENTAL PATIENT, A PRESCRIPTION FOR THE

DRUG MUST BE SIGNED BY THE CHIEF OF A SERVICE OR A MEDICAL MEMBER OF THE PHARMACY COMMITTEE AND SENT TO THE PHARMACY. IF ANY SPECIFIC DRUG IS REQUESTED BY PRESCRIPTION FOR TEN (10) OR MORE DEPARTMENTAL PATIENTS, THE PHARMACIST SHALL AUTOMATICALLY BRING THIS SPECIFIC DRUG BEFORE THE PHARMACY COMMITTEE FOR CONSIDERATION FOR ITS INCLUSION IN THE PHARMACY CATALOGUE. PRESCRIPTION FOR DRUGS WHICH HAVE BEEN PREVIOUSLY REJECTED BY THE PHARMACY COMMITTEE MAY NOT BE FILLED BY THE PHARMACIST FOR DEPARTMENTAL PATIENTS IF THE DRUGS HAVE BEEN REJECTED. ANY DRUG PREVIOUSLY REJECTED BY THE PHARMACY COMMITTEE SHALL BE RECONSIDERED BY THE COMMITTEE ON FORMAL WRITTEN REQUEST BY A CHIEF OF SERVICE. SUCH REQUEST SHALL INDICATE THE ADDITIONAL EVIDENCE JUSTIFYING RECONSIDERATION OF THE DRUG.

4. DRUGS ORDERED FOR PRIVATE PATIENTS NOT LISTED IN THE PHARMACY CATALOGUE SHALL BE OBTAINED AND AN APPROPRIATE CHARGE MADE TO THE PATIENT.
5. AUTOMATIC STOP ORDERS:
  - A. ORDERS FOR NARCOTIC DRUGS SHALL AUTOMATICALLY STOP AFTER 72 HOURS UNLESS THE ORDER IS WRITTEN WITH A DEFINITE LIMITATION OF DURATION.
  - B. ALL OTHER ORDERS SHALL AUTOMATICALLY STOP AFTER SEVEN DAYS UNLESS THE ORDER IS WRITTEN WITH A DEFINITE LIMITATION OF DURATION.
  - C. ORDERS SHALL NOT BE DISCONTINUED WITHOUT NOTIFYING THE PHYSICIAN.
6. THE USE OF CERTAIN DRUGS MAY BE SUBJECT TO REGULATION BY ACTION OF THE HOSPITAL BOARD WHEN THE USE OF SUCH DRUGS BECOMES A MATTER OF CONCERN TO THE WELFARE OF HOSPITAL PATIENTS AS A WHOLE.
7. THE REGULATIONS AND PROCEDURES FOR THE USE OF EXPERIMENTAL DRUGS SHALL BE FORMULATED THROUGH THE RESEARCH COMMITTEE OF THE FACULTY BOARD.

V. COVERAGE

1. EACH CLINICAL SERVICE INCLUDING X-RAY, LABORATORY, AND PATHOLOGY, ETC., SHALL PROVIDE 24 HOUR COVERAGE.
2. ATTENDING PHYSICIANS, NOT THE SERVICE, SHALL ARRANGE FOR ANOTHER MEMBER OF THE MEDICAL STAFF TO COVER THEIR RESPONSIBILITIES WHEN THEY CANNOT BE AVAILABLE.
3. EACH HOUSE OFFICER BEFORE SIGNING OUT WITH THE TELEPHONE OPERATOR SHALL CONTACT PERSONALLY HIS REPLACEMENT TO MAKE SURE HE OR SHE IS AVAILABLE FOR COVERAGE.
4. FOR GENERAL IDENTIFICATION IN THE HOSPITAL THE ATTENDING STAFF IS EXPECTED TO WEAR A LONG WHITE COAT OR SUIT CLOTHES; THE HOUSE STAFF - WHITE UNIFORMS WITH TIE UNLESS THE UNIFORM HAS A SPECIAL SHIRT (PSYCHIATRY HOUSE OFFICERS MAY BE AN EXCEPTION) AND THE MEDICAL STUDENTS - WHITE SHORT JACKETS.
5. EMERGENCY PAGES SHALL BE CALLED WITH A CODE "RED UNIT" WITH A FLOOR DESIGNATED WHEN ANY PHYSICIAN IS NEEDED, OR WITH A CODE "GREEN UNIT" WITH A SERVICE AND FLOOR DESIGNATED WHEN A PHYSICIAN OF A PARTICULAR SERVICE IS NEEDED.

VI. GENERAL SERVICES

A. SURGICAL

1. PATIENTS SCHEDULED FOR MAJOR SURGERY THE FOLLOWING DAY, EXCEPT IN CASES OF EMERGENCY, SHALL BE ADMITTED NOT LATER THAN 2:00 P.M. TO INSURE ADEQUATE PREPARATION.
2. A SURGICAL PROCEDURE SHALL BE PERFORMED ONLY WITH THE WRITTEN AND PROPERLY WITNESSED CONSENT OF THE PATIENT OR HIS LEGAL REPRESENTATIVE, EXCEPT IN EMERGENCIES.

3. IF THE HISTORY, PHYSICAL EXAMINATION, LABORATORY REPORTS, CONSENT, AND PROPER PRE-OPERATIVE NOTE ARE NOT RECORDED BEFORE THE TIME STATED FOR OPERATION, THE OPERATION SHALL BE CANCELLED, UNLESS THE ATTENDING SURGEON STATES IN WRITING THAT SUCH DELAY WOULD BE DETRIMENTAL TO THE PATIENT.
  4. ALL OPERATIONS PERFORMED SHALL BE DESCRIBED AND THEN SIGNED BY THE OPERATING SURGEON AND THE REPORT SHALL BE DICTATED WITHIN 24 HOURS FOLLOWING THE OPERATION.
  5. ALL TISSUES REMOVED AT OPERATION SHALL BE SENT TO THE SURGICAL PATHOLOGY LABORATORY. THE PATHOLOGIST SHALL MAKE SUCH EXAMINATIONS ON EACH SPECIMEN AS HE MAY CONSIDER NECESSARY TO ARRIVE AT A PATHOLOGICAL DIAGNOSIS, AND SHALL PREPARE A REPORT FOR THE RECORD.
  6. SURGEONS AND ANESTHETISTS SHALL ASSUME THOSE RESPONSIBILITIES ASSIGNED BY THE REGULATIONS FORMULATED BY THE OPERATING ROOM SUBCOMMITTEE GOVERNING OPERATING AND DELIVERY ROOM SUITES.
- B. OTHER GENERAL SERVICES -(X-RAY, LABORATORY, BLOOD BANK, RADIOLOGY, PATHOLOGY, ETC.)
1. HOSPITAL PROCEDURE SHALL BE FORMULATED BY THE RESPONSIBLE SERVICE, BUT MAY BE SUBJECT TO REVIEW AND APPROVAL BY THE HOSPITAL BOARD.
  2. SIGNED REPORTS OF LABORATORY PROCEDURES SHALL BE FILED WITH THE PATIENT'S RECORD AND DUPLICATE COPIES KEPT ON FILE FOR AT LEAST ONE MONTH. THE LEDGER BOOKS IN WHICH THE LABORATORY DATA IS ENTERED SHALL BE KEPT ON FILE NOT LESS THAN ONE YEAR.
  3. SIGNED REPORTS OF ALL X-RAY PROCEDURES SHALL BE FILED IN THE PATIENT'S CHART, AND A DUPLICATE COPY KEPT ON FILE FOR AT LEAST ONE YEAR.

4. X-RAY FILMS OF TEACHING VALUE SHALL BE RETAINED FOR SCIENTIFIC PURPOSES FOR A PERIOD OF AT LEAST 25 YEARS.
5. THE USE, STORAGE AND DISPOSAL OF RADIOACTIVE MATERIALS FOR HOSPITAL PATIENTS SHALL BE SUBJECT TO REGULATION THROUGH THE HOSPITAL ISOTOPE SUBCOMMITTEE TO MAINTAIN RADIATION SAFETY STANDARDS IN ACCORDANCE WITH RECOGNIZED STATE AND NATIONAL STANDARDS. THE ISOTOPES COMMITTEE SHALL DESIGNATE A SAFETY OFFICER OF RADIATION.
6. EVERY MEMBER OF THE STAFF SHALL BE ACTIVELY INTERESTED IN SECURING AUTOPSIES WHENEVER POSSIBLE.
7. DIAGNOSTIC AND NON-OPERATIVE TREATMENT PROCEDURES KNOWN TO HAVE LOW RATES OF COMPLICATIONS FOR LARGE VOLUMES OF PATIENTS BY NATIONAL STANDARDS SHALL NOT REQUIRE SIGNED PERMITS BY THE PATIENTS OR THEIR LEGAL REPRESENTATIVES, (EXAMPLES: UROGRAMS, RENOGRAMS, BLOOD VOLUME DETERMINATIONS, ANGIOTENSIN TESTS, ANTICOAGULANT THERAPY, CHEMOTHERAPY WITH APPROVED DRUGS, ETC.)

VII. MASS CASUALTY PLAN

1. ALL PHYSICIANS ON THE MEDICAL STAFF OF THE HOSPITAL AGREE TO RELINQUISH DIRECTION OF PROFESSIONAL CARE OF THEIR PATIENTS TO THE CHIEFS OF THE DISASTER SERVICES IN CASE OF SUCH AN EMERGENCY.

VIII. THE STAFF SHOULD REPORT ANY UNUSUAL OCCURRENCES TO THE HOSPITAL ADMINISTRATOR.

- IX. ALL PATIENTS IN THE UNIVERSITY OF OKLAHOMA HOSPITALS SHALL BE AVAILABLE FOR UNDERGRADUATE AND GRADUATE MEDICAL TEACHING UNLESS SPECIFICALLY EXCUSED BY THE CHIEF OF THE SERVICE INVOLVED.

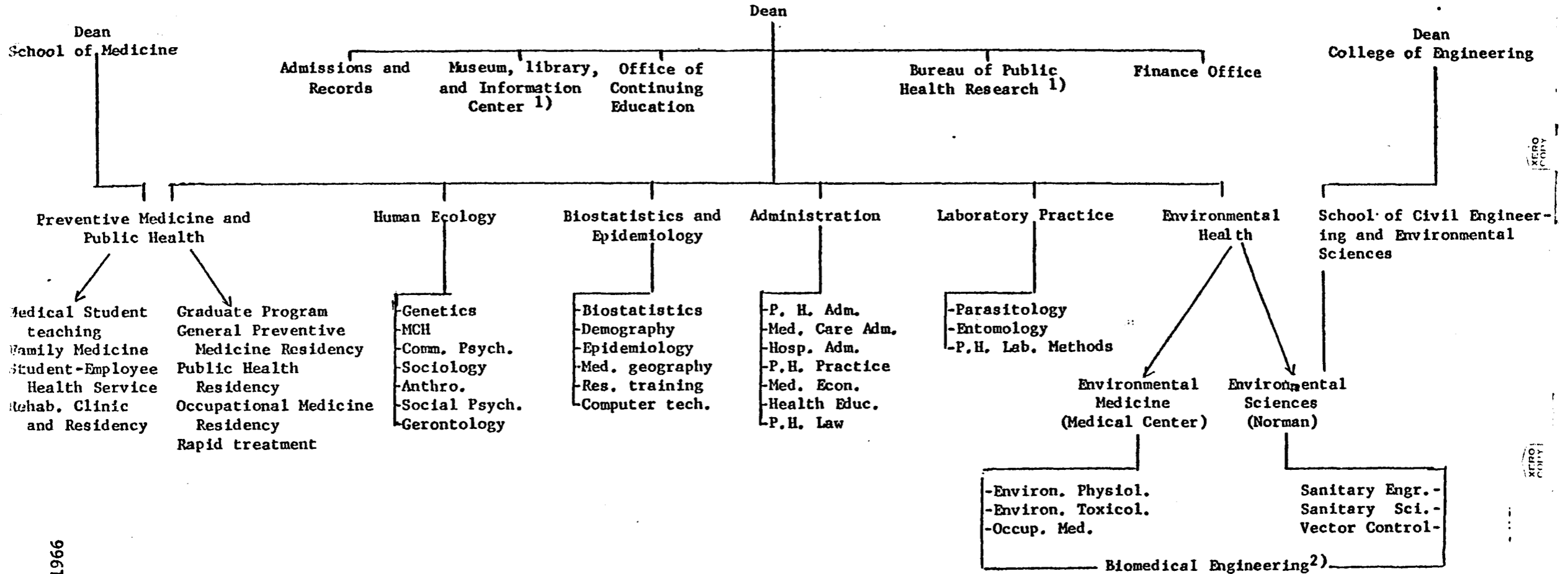
5/2/66 - JAR

XERO COPY

SCHOOL OF HEALTH

Proposed Organizational Chart

8623



XERO COPY

XERO COPY

- 1) Collaboration of School of Health and State Health Department.
- 2) Administered through School of Engineering and in cooperation with interested department and agencies.

July 14, 1966

Figure 3  
Page 25



4. Allocate \$50,000 in additional funds for operation on a limited basis during 1966-67.
5. Authorize a request for accreditation of the School of Health.
6. Authorize the development of building plans and the securing of funds to permit building construction.
7. Authorize a request for the degrees and curricula outlined in this proposal.
8. Authorize acceptance of students into the program without delay.
9. Request the University administration to include the School of Health in its University committee appointments.
10. Request legislative funds for support of the School of Health according to the following schedule:

1967-69	\$390,000 per year
1969-71	640,000 per year
1971-73	1,000,000 per year
1973-75	1,188,980 per year

These figures include the full amount for Environmental Sciences, which is already a functioning unit on the Norman Campus.

On motion by Regent Davies, the recommendations were unanimously approved. The recommendations and proposal will now be submitted to the State Regents for Higher Education for their consideration.

President Cross reported that as a result of the decision of the Presbyterian Hospital to locate in the Medical Center area, it has become desirable to enter into an Agreement of Affiliation with the Trustees of the Presbyterian Hospital Medical Center, Inc. This Agreement of Affiliation is to further mutual programs in medical education, research, patient care and community services. An agreement of this type will enable the programs of medical education at our Medical Center to be carried on not only in the University-owned facilities but also in the facilities owned and operated by the Presbyterian Hospital.

This agreement provides that a joint policy advisory board will be created to administer the provisions of the Affiliation Agreement. This board will act in an advisory capacity to both parties to the agreement. It will also arbitrate disputes which arise under the agreement.

The following is a copy of the proposed agreement:

**AGREEMENT OF AFFILIATION**

This Agreement made and entered into by and between THE PRESBYTERIAN MEDICAL CENTER OF OKLAHOMA, INC., a corporation organized under the laws of the State of Oklahoma, for charitable and educational purposes, First Party, and the REGENTS OF THE UNIVERSITY OF OKLAHOMA, a body corporate created by the laws of the State of Oklahoma, Second Party, for the purpose of affiliating the Presbyterian Hospital, owned and operated by First Party and the University of Oklahoma Medical Center, an integral part of the University of Oklahoma under the control, supervision and management of Second Party. For clarity and convenience, First Party will hereinafter be referred to as "HOSPITAL", and Second Party will hereinafter be referred to as "UNIVERSITY".

The purpose and objectives of the affiliation is to further mutual programs in medical education, research, patient care, and community services, within the policies and in adherence to the concepts of the OKLAHOMA HEALTH SCIENCES FOUNDATION, hereinafter referred to as "FOUNDATION".

NOW THEREFORE, in consideration of the mutual advantages to the parties, and in order to provide for cooperation in accomplishing common objectives, for furthering mutual understanding and for the equitable administration of programs of mutual interest, the parties agree that the arrangements of affiliation set forth below shall be effective from and after the date this affiliation agreement is executed by both parties.

**1. JOINT POLICY ADVISORY BOARD:**

In order to administer equitably the provisions of this affiliation, there shall be established a Joint Policy Advisory Board, hereinafter referred to as "The Board", consisting of ten members. Five members will be appointed by the University, and five will be appointed by the Hospital. In addition, a representative of the Foundation, at the discretion of the Board, may be designated by the Foundation to be an ex officio member of the Board.

The duties and responsibilities of the Board shall be:

A. Recommendation of all joint appointments to the staff of the Hospital and the faculty of the University.

B. Receiving and adjudicating all grievances relating to the mutual programs of research, teaching, patient care and community services.

C. Appointment of all committees deemed necessary to carry out the provisions of this Agreement and approve all actions of these committees.

D. Reviewing the provisions of this Agreement when necessary and making recommendations for all amendments to the Agreement.

E. Developing common policies and programs consistent with the policies of both Parties and the provisions of this Agreement.

F. Considering such other matters which from time to time arise and which are of common concern to both Parties.

Appointments to the Board shall be for three year staggered terms. Any member of the Board may be reappointed at the discretion of the Party originally appointing him. A member may be removed only by the Party appointing him. In the event of the removal, death, or resignation of a member, his successor shall be selected by his appointing Party.

The Board shall meet at any time on the request of either Party. Such request shall be submitted to the Chairman of the Board, in writing, who shall cause notice of the time and place of the meeting, which shall be held within thirty days from the date request is submitted to him.

In the event it is impossible for any member to be present at a meeting so called, the party appointing him may designate an alternate to represent him at the meeting.

Robert's Rules of Order shall be followed in the conduct of the meetings of the Board.

The Chairman of the Board shall be elected annually, alternating between a member of the Board representing each Party. He shall be a voting member of the Board.

## 2. JOINT FACULTY-STAFF APPOINTMENTS:

Power of appointment to the faculty resides in the University; power of appointment to the Hospital staff, whether a faculty member or not, resides in the Hospital. All recommendations for joint appointment shall be made to both Parties by the Board.

## 3. HOSPITAL CHAIRMEN OF CLINICAL DEPARTMENTS:

The Hospital chairman of a department will be responsible to the corresponding medical school department for all mutual programs of education and research involving his department. The Hospital chairmen of a department, however, may wish to delegate this responsibility to a "chief of the teaching service". The appointment of a "chief of the teaching service" must be approved by the Board.

All members of the Hospital staff involved in the joint teaching and research programs must hold a joint appointment.

4. PATIENTS AND THE JOINT TEACHING AND RESEARCH PROGRAMS:

All patients (private or charity) admitted to a Hospital service (inpatient or outpatient) will be available (with proper permission of the patient) for participation in the teaching and research programs. Exceptions will be made only when the attending physician feels that participation in either a teaching or research program might adversely affect the patient's condition. In this case, the attending physician shall submit to the Hospital department chairman or the Director of Medical Education, the reasons why the patient should be excused from participation.

5. HOUSE STAFF:

The present integrated intern program shall be continued. An integrated residency program shall be developed as soon as practicable. All house staff will participate in the joint teaching and research programs as needed. Designation of the mechanism of recruitment of house staff will be the responsibility of the Board.

6. FELLOWSHIPS:

An integrated predoctoral and postdoctoral fellowship program shall be developed as soon as practicable.

7. MEDICAL STUDENT RESPONSIBILITIES:

The medical student assigned to the Hospital will participate, under faculty supervision, in the care of the patient at a level commensurate with his training and ability. The record made by the student will remain a part of the total patient file at least for the duration of the patient's stay in the hospital.

8. JOINT RESEARCH:

All joint research projects will be recommended for approval or disapproval by a Joint Research Committee appointed by the Board. Final recommendation is the responsibility of the Board. All joint research projects will be done under faculty supervision.

The duties of the Joint Research Committee shall be:

A. Approval or disapproval of a proposed research project based on the feasibility, quality and value of the project.

This includes:

- (1) Protection of the rights and welfare of patients involved.

(2) Assurance of appropriateness of the methods used to secure informed consent.

(3) Weighing the risks and potential benefits of the project.

B. Encourage and assist in the development of good research.

C. Allocate appropriate space and facilities for the project, with the approval of the administrators of the participating hospitals.

D. Review the progress of projects when indicated.

E. Attempt to maintain a balance and coordination of multiple projects.

9. EDUCATIONAL AND RESEARCH FACILITIES:

The Hospital agrees to provide such space and facilities as are necessary for participation in the joint education and research programs. The University agrees to make available facilities under its control which are necessary for the joint programs.

The University, through its facilities, those of the Foundation or such other agencies as may be formed, also will offer, through proper arrangements, designated common services and facilities in the Oklahoma Health Center.

10. FINANCIAL CONSIDERATION:

All fiscal arrangements relating to this agreement will be recommended by the Board to the appropriate authority.

11. HOSPITAL DIRECTOR OF MEDICAL EDUCATION:

The appointment of the Hospital Director of Medical Education will be made in the same manner as joint appointments.

The Hospital and the University will share the salary of the Director of Medical Education on an equitable basis.

The general duties of the Director of Medical Education will be the coordination of the joint educational programs carried on in the Hospital, as outlined and approved by the Board.

12. TERMINATION AND AMENDMENT OF THE AGREEMENT:

This agreement will be renewed automatically each year unless the Hospital or the University serves a six months notice requesting cancellation of the Agreement.

The Board may recommend amendment to this Agreement for approval by the governing body of each institution at any time.

13. INSURANCE:

The desirability of appropriate liability or malpractice insurance for joint health services personnel, medical students, and house staff is recognized. If possible, the parties will make such coverage available to such personnel under the most advantageous terms that can be obtained, subject however, to the approval of the Board.

It is further recognized that comprehensive group insurance for the protection of the faculty, house staff, and other joint health services personnel is desirable, and that the Parties should work toward that end.

14. RELATED HEALTH PROGRAMS:

This affiliation agreement may be expanded to provide for the development of other health related programs as the need arises.

IN WITNESS WHEREOF the Parties hereto have caused their names to be executed by their respective principal officers; the date being inserted by the last to execute in the space provided.

DATED at Oklahoma City, Oklahoma this \_\_\_\_ day of \_\_\_\_\_, 1966.

ATTEST:

/s/ Jack W. Shrode  
Secretary

THE PRESBYTERIAN MEDICAL CENTER  
OF OKLAHOMA INC.

By /s/ Wm. Morgan Cain  
President

ATTEST:

\_\_\_\_\_  
Secretary

REGENTS OF UNIVERSITY OF OKLAHOMA

By \_\_\_\_\_  
President

President Cross said this agreement has already been executed by the Trustees of the Presbyterian Medical Center and it has been recommended by the Director of the Medical Center and the heads of the clinical departments that this agreement be executed by the Regents. We have been advised that similar agreements are being used by most of the medical centers throughout the United States which have private facilities located within the area of their medical center complex.

President Cross recommended that the Regents approve the Agreement of Affiliation as shown above and authorize the Agreement to be executed by the President of the Board.

Approved on motion by Regent Sparks.

The item on the agenda pertaining to construction and operation of an automatic food vending service at the University Hospitals was removed upon recommendation of President Cross.

President Cross presented the following tabulation of bids received for the construction of the addition to the Speech and Hearing Center:

	<u>Base Bid</u>	<u>Alt. #1</u>	<u>Alt. #2</u>	<u>Alt. #4</u>
Benmore, Inc.	\$315,800	\$16,300	\$5,400	\$20,500
Weldon S. Liebolt Constr.	312,800	19,700	7,000	22,000
M.B. Rischard - Contr.	305,200	17,400	6,100	22,500
E. V. Cox Constr. Co.	296,876	16,900	5,220	20,500
Mangum Constr. Co.	322,500	18,400	6,100	23,900
J. J. Cook Constr. Co.	338,833	22,920	8,785	23,990
Chas. M. Dunning Constr.	319,887	17,339	6,989	23,255
Lippert Bros., Inc.	308,640	16,671	6,363	21,006
Suttle Constr. Co.	301,600	15,600	5,700	18,600
J. W. Skaggs Constr. Co.	310,900	17,072	6,844	20,788
George Mappes Constr.	307,250	18,330	7,640	23,790

Alt. #1 Add If two rooms and corridor on plan sheet 14 constructed and office on plan sheet 15 is extended and remodeled.

Alt. #2 Add If ground floor area is remodeled as shown on plan sheets 2 and 16.

Alt. #4 Add If ground floor and 1st floor areas are added as shown on plan sheet 17.

The bids have been inspected by representatives of the State Health Department where the Hill-Burton program in Oklahoma is administered. The University has been assured that the bids are in order so far as Hill-Burton funds are concerned.

Funds are available to accept the base bid and alternate #1. The construction of the project will be financed from funds from the state building bond issue, the Hill-Burton funds, and grant and trust funds of the Speech and Hearing Center.

President Cross recommended that the contract be awarded to the low bidder, E. V. Cox Construction Company, on the basis of their base bid plus alternate #1, for a total construction contract of \$313,776.

Approved on motion by Regent Little.

Dean Dennis and Mr. Crews retired from the meeting.

July 14, 1966

8631

President Cross reported that at their meeting on June 17, 1966, the Oklahoma State Regents for Higher Education approved the May 31 request of the University of Oklahoma to participate along with Oklahoma State University, the University of Arkansas, and the University of Missouri in the Ozarks Unlimited program. According to a letter from Chancellor Dunlap, "It was the feeling of the State Regents that their approval of such participation was necessary in view of the fact that functions and resources of the institution are involved," although no recommendation on the subject was submitted to the State Regents by either the University of Oklahoma or by Oklahoma State University.

This was reported for the information of the University Regents and no further action was required.

#### FACULTY

##### LEAVE OF ABSENCE WITHOUT PAY:

Harley P. Brown, Professor of Zoology, September 1, 1966 to January 16, 1967.

##### APPOINTMENTS:

Gerald T. Kowitz, Ph.D., Professor of Education, \$17,000 for 12 months, September 1, 1966.

Paul W. Smith, reappointed Adjunct Professor of Pharmacology, College of Pharmacy, no salary, June 1, 1966.

William B. Stavinoha, reappointed Adjunct Professor of Pharmacology, College of Pharmacy, no salary, June 1, 1966.

Lynton Keith Caldwell, Visiting Professor of Political Science, June 1, 1966. Salary paid by special payment.

Hugh Gordon MacNiven, Ph.D., Professor of Political Science, \$13,200 for 9 months, September 1, 1966.

Leale E. Streebin, Ph.D., Associate Professor of Civil Engineering and Environmental Science, \$10,092 for 9 months, September 1, 1966.

Robert Lee Curry, Ph.D., Associate Professor of Education, \$12,000 for 12 months, September 1, 1966.

David Edwin Harrell, Jr., Ph.D., Associate Professor of History, \$9,156 for 9 months, September 1, 1966.

Alan Philip Marchand, Ph.D., Assistant Professor of Chemistry, \$8,940 for 9 months, September 1, 1966.



July 14, 1966

8632

Jo Ellen Jameson, Assistant Professor of Home Economics, \$7,536 for 9 months, September 1, 1966.

Mack Redburn Palmer, Assistant Professor of Journalism, \$10,092 for 9 months, September 1, 1966.

Frederick Heins Miller, J.D., Assistant Professor of Law, \$11,400 for 9 months, September 1, 1966.

John Richard Grunder, Ph.D., Assistant Professor of Pharmacy, \$9,384 for 9 months, September 1, 1966.

Joseph Alois Rieger, Assistant Professor of Pharmacology, College of Pharmacy, \$8,112 for 9 months, September 1, 1966.

Stephen Sloan, Assistant Professor of Political Science, \$8,940 for 9 months, September 1, 1966.

Paul A. Barefield, Assistant Professor of Speech, \$9,384 for 9 months, September 1, 1966.

Hugh Daniel O'Neill, Jr., Special Instructor in Education, \$5,496 for 9 months, September 1, 1966.

Martin Russey Ausmus, Special Instructor in English, \$6,500 for 9 months, September 1, 1966.

John Francis Desmond, Special Instructor in English, \$3,258 for 9 months, 1/2 time, September 1, 1966.

Richard Dennis McGhee, Special Instructor in English, \$6,516 for 9 months, September 1, 1966.

Anne Flemming Gookin, Special Instructor in Physical Education, \$6,360 for 9 months, September 1, 1966.

Frances Ann Tomlin, Instructor in Physical Education, \$6,060 for 9 months, September 1, 1966.

Alan David Allen, Special Instructor, University School, \$3,000 for 9 months, 3/4 time, September 1, 1966.

Scott Woodrow Kester, Special Instructor and Secondary School Principal, University School, \$5,628 for 10 months, August 15, 1966 to June 15, 1967.

Larry Lee McKinney, Special Instructor, University School, \$5,496 for 9 months, September 1, 1966.

Arden Kidd Watson, Special Instructor, University School, \$4,860 for 9 months, September 1, 1966.

July 14, 1966

8633

Roberta K. Rule, Teaching Assistant in Drama, \$1,000 for 9 months, 1/4 time, September 1, 1966.

Marshall D. Basham, Teaching Assistant in English, \$1,350 for 4½ months, 3/4 time, September 1, 1966; Graduate Assistant in English, \$900 for 4½ months, 1/2 time, January 16, 1967.

Paul Hart Cox, Teaching Assistant in English, \$3,000 for 9 months, 3/4 time, September 1, 1966.

Clyde H. Fixmer, Teaching Assistant in English, \$3,000 for 9 months, 3/4 time, September 1, 1966.

Robert W. Green, Teaching Assistant in English, \$3,000 for 9 months, 3/4 time, September 1, 1966.

Jerry George Holt, Teaching Assistant in English, \$1,500 for 4½ months, 3/4 time, September 1, 1966; Graduate Assistant in English, \$1,000 for 4½ months, 1/2 time, January 16, 1967.

Nancy Beth Lewis, Teaching Assistant in English, \$4,000 for 9 months, September 1, 1966.

Robert Thomas Lindsey, Teaching Assistant in English, \$1,350 for 4½ months, 3/4 time, September 1, 1966; Graduate Assistant in English, \$900 for 4½ months, 1/2 time, January 16, 1967.

James Leroy Lonquest, Teaching Assistant in English, \$4,000 for 9 months, September 1, 1966.

Judith Kay Moore, Teaching Assistant in English, \$1,350 for 4½ months, 3/4 time, September 1, 1966; Graduate Assistant in English, \$900 for 4½ months, 1/2 time, January 16, 1967.

Charles Duane Poston, Teaching Assistant in English, \$3,000 for 9 months, 3/4 time, September 1, 1966.

Jerry Walker Rutledge, Teaching Assistant in English, \$1,500 for 4½ months, 3/4 time, September 1, 1966; Graduate Assistant in English, \$1,000 for 4½ months, 1/2 time, January 16, 1967.

James Schroeder, Teaching Assistant in English, \$1,500 for 4½ months, 3/4 time, September 1, 1966; Graduate Assistant in English, \$1,000 for 4½ months, 1/2 time, January 16, 1967.

Carl George Sennhenn, Teaching Assistant in English, \$4,000 for 9 months, September 1, 1966.

July 14, 1966

8634

Nancy Shelton Skinner, Teaching Assistant in English, \$1,500 for 4½ months, 3/4 time, September 1, 1966; Graduate Assistant in English, \$1,000 for 4½ months, 1/2 time, January 16, 1967.

Larry Eugene Taylor, Teaching Assistant in English, \$3,000 for 9 months, 3/4 time, September 1, 1966.

Mary Eleanor Thomas, Teaching Assistant in English, \$5,496 for 9 months, September 1, 1966.

Charles Morris Woltz, Teaching Assistant in English, \$5,496 for 9 months, September 1, 1966.

**CHANGES:**

Claude Kelley, title changed from Assistant Dean for Personnel, College of Education, to Associate Dean of Education, July 1, 1966.

Oliver D. Johns, title changed from Assistant Dean for Projects and the University School, College of Education, to Assistant Dean of Education, July 1, 1966.

Robert E. Ohm, title changed from Assistant Director to Associate Director of Teacher Education, College of Education, July 1, 1966.

Herbert R. Hengst, Associate Professor of Education; given additional title of Assistant Director of Teacher Education, July 1, 1966.

Raymond R. White, Professor of Office Administration; given additional title of Professor of Education, July 1, 1966.

Anthony S. Lis, Associate Professor of Administrative Services; given additional title of Associate Professor of Education, July 1, 1966.

Carl D. Riggs, Vice President for Graduate Studies, Dean of the Graduate College, Professor of Zoology; resigned as Head Curator of Zoology, Division, Stovall Museum, June 1, 1966.

George M. Sutton, title in Stovall Museum changed from Curator of Birds to Head Curator of Zoology, June 1, 1966.

Edward F. Blick, Associate Professor of Aerospace and Mechanical Engineering; appointed Assistant Dean of the Graduate College, salary changed from \$12,000 for 9 months to \$16,400 for 12 months, September 1, 1966.

Richard S. Wells, Assistant Professor of Political Science; appointed Assistant Dean, College of Arts and Sciences, salary changed from \$8,724 for 9 months to \$11,676 for 12 months, September 1, 1966.

July 14, 1966

8635

Leon H. Ginsberg, promoted from Instructor to Associate Professor of Social Work, September 1, 1966.

James Joseph Yoch, Jr., promoted from Instructor to Assistant Professor of English, September 1, 1966.

Antonia Alvarez del Valle, Visiting Assistant Professor of Modern Languages, salary increased from \$7,356 to \$8,316 for 9 months, September 1, 1966.

**RESIGNATIONS:**

J. Palmer Boggs, Professor of Architecture, June 1, 1966.

Alexander G. Jan Ruhtenberg, Associate Professor of Architecture, June 1, 1966.

Leland Fox, Associate Professor of Music, resignation changed from June 1 to August 1, 1966.

Dale Claude Byrd, Assistant Professor of Architecture, June 1, 1966.

Lee Thomas Karns, Lecturer in Education, September 1, 1966.

Ronald L. Vaughn, Special Instructor in Education, September 1, 1966.

Carolyn Madge Pratt, Instructor in Political Science, June 1, 1966.

Teresa Agreda, Spanish Teacher, Puerto Rico Peace Corps Project, May 29, 1966.

Elsie Agnes Huhn, Spanish Teacher, Puerto Rico Peace Corps Project, April 29, 1966.

President Cross also recommended the appointment of Professor Richard G. Fowler as Chairman of the Department of Physics for a one-year term, effective September 1, 1966.

Approved on motion by Regent Davies.

President Cross reported the death of two members of the University faculty: Tannell A. Shadid, Professor of Business Law, on June 10, 1966, and A. M. de la Torre, Professor of Modern Languages, on June 2, 1966.

**SUMMER SESSION**

Administrative Service

Forrest L. Frueh, Assistant Professor, changed from \$652.50 per month, 3/4 time, to \$870 per month, full time, June and July.

July 14, 1966

8636

Air Resources Grant

Victor Kirke Malone, Graduate Assistant, \$230 per month, 1/2 time, June 1 to September 1, 1966.

Architecture

J. Ronald Kabriel, Assistant Professor, \$792 per month, June 20 to August 1, 1966.

William S. Burgett, Professor, resigned summer session appointment June 18, 1966.

Summer Institute in Biology

Michael J. Eoff, Graduate Assistant in Zoology, \$195 per month, 1/2 time, June and July.

Clark W. Beasley, Graduate Assistant in Zoology, \$216 per month, 1/2 time, June and July.

Biological Station

Harriet G. Barclay, Visiting Professor of Botany, \$1,508 for June.

Loren Gilbert Hill, Ichthyologist, \$1,186 for June.

John Stanley Mackiewicz, Visiting Associate Professor, \$984 for July.

Robert Andrew Main, Limnologist, \$1,384 for June.

Wardlow Howard McCarley, Visiting Professor, \$690 per month, 1/2 time, June and July.

Harold Eugene Schlichting, Jr., Visiting Associate Professor, \$1,468 for July.

John A. Schmitt, Jr., Visiting Associate Professor, \$1,104 for June.

Kenneth Wilson Stewart, Visiting Zoologist (Invertebrate), \$766 per month, June and July.

Biological Survey

Harriet G. Barclay, Visiting Plant Ecologist, \$1,008 for July.

Loren Gilbert Hill, Ichthyologist, \$936 for July.

John Stanley Mackiewicz, Visiting Parasitologist, \$984 for June.

July 14, 1966

8637

Robert Andrew Main, Visiting Limnologist, \$936 for July.

Harold Eugene Schlichting, Jr., Visiting Algologist, \$1,218 for June.

John A. Schmitt, Jr., Visiting Mycologist, \$1,104 for July.

Business and Industrial Services

Stephen M. Sutherland, Assistant Professor, \$1,068 per month, June and July.

Chemistry Marine Organism Grant

Leon S. Ciereszko, Director, \$766.66 per month, 1/2 time, June 1 to September 1, 1966.

Francis John Schmitz, Staff Associate, \$287.33 per month, 1/4 time, June 1 to September 1, 1966.

Alfred John Weinheimer, Professor, \$325 per month, 1/4 time, July and August.

Chemistry Summer Institute for College Teachers

Alfred John Weinheimer, Director, \$845 per month, .65 time, June and July.

Chemistry

J. J. Bloomfield, Assistant Professor, declined to accept.

George Alton Dunaway, Graduate Assistant, \$204 per month, 1/2 time, June and July.

Drama (Summer Circle Playhouse)

Nancy Elizabeth Gade, Assistant Professor, \$564 per month, 2/3 time, June and July.

NSF Summer Sequential Institute in Earth Science

Charles J. Mankin, Associate Director, Associate Professor of Geology, \$825 for June, \$976.50 for July, 3/4 time; salary on Geology budget changed to 1/2 time for June and July.

John W. Morris, Professor of Geography, \$478.12 per month, .375 time, June and July; salary on Geography budget changed to .625 time for June and July.

July 14, 1966

8638

David P. Bucke, Jr., Graduate Assistant, \$250 per month, 1/2 time, June and July.

Assad Irampanah, Graduate Assistant, \$250 per month, 1/2 time, June and July.

Ecology Summer Institute

Chester Glenn Twitchell, Graduate Assistant, \$200 per month, 1/2 time, June and July.

Economics

Jack L. Robinson, Associate Professor, changed from \$396 per month, .375 time, to \$792 per month, 3/4 time, June and July.

Paul A. Brinker, Professor, declined to accept.

Education

Milton Delbert J. Simmons, Graduate Assistant, declined to accept.

Electrical Engineering

Frank J. Kern, Instructor, salary increased from \$810 to \$912 per month, June and July.

Engineering, Department of

Rex Lee Inman, Visiting Assistant Professor of Meteorology, \$444 per month, 1/2 time, June and July.

English

Jerry George Holt, Graduate Assistant, \$216 per month, 1/2 time, June and July.

Family Finance Institute

Nona Rose Berghaus, Family Finance Consultant, \$500 per month, June and July.

Larry D. Coleman, Family Finance Consultant, \$500 per month, June and July.

Finance

Norman Kangun, Assistant Professor, \$405 per month, .375 time, June and July; also appointed in Marketing at \$405 per month, .375 time, June and July.

July 14, 1966

8639

Richard E. French, Special Instructor, \$263.25 per month, 3/8 time, June and July.

Robert A. Ford, Professor, changed from \$850.50 per month, 3/4 time, to \$1,134 per month, full time, June and July.

William K. Ghee, Assistant Professor, declined to accept.

### Geology

Phillip Jan Canon, Graduate Assistant, \$204 per month, 1/2 time, June and July.

### Geological Survey

Tom Lee Rowland, Geologist II, salary increased from \$517 to \$600 per month, June 1 to September 1, 1966.

### NDEA Economic History Institute

Duane M. Leach, Lecturer-Assistant Professor, \$944 per month, June and July.

### History

William S. Coker, Visiting Assistant Professor (NDEA), \$1,080 per month, June and July.

Dwight E. Mayo, Instructor in the History of Science, \$436 per month, 3/4 time, June and July.

Jesse Carroll Moody, Jr., Visiting Assistant Professor (NDEA), \$1,080 per month, June and July.

George Perry Burris, Special Instructor in the History of Science, \$486 per month, 3/4 time, June and July.

John Allen Johnson, Graduate Assistant, \$216 per month, 1/2 time, June and July.

Howard L. Meredith, Graduate Assistant, \$216 per month, 1/2 time, June and July.

Frank Herbert Smyrl, Graduate Assistant, \$216 per month, 1/2 time, June and July.

### Library Science

Elizabeth L. Oliver, Special Instructor, \$792 per month, June and July.



July 14, 1966

8640

Mathematics

Raymond C. Drago, Associate Professor, changed from \$774 per month, full time, to \$290.25 per month, .375 time, June and July.

Harold V. Huneke, Associate Professor, changed from \$304.50 per month, 1/4 time, to \$1,218 per month, full time, June and July; also appointed on Academic Year Institute, \$633.33 per month, 1/2 time, July and August.

Gene Levy, Associate Professor, changed from \$445.50 per month, .375 time, to \$1,039.50 per month, .875 time, June and July; appointed on Academic Year Institute, \$154.50 per month, 1/8 time, June and July and \$927 for August, 3/4 time.

Lloyd Andrew Iverson, Director, NSF Secondary Science Training Program, \$610.67 per month, June 1 to September 1, 1966.

Jin T. Chen, Special Instructor, \$277.50 per month, 5/8 time, June and July.

Leo Marion Harvey, Special Instructor, Summer Institute in Mathematics, \$250 per month, 1/2 time, June and July.

Marc Q. Jacobs, Instructor, \$648 per month, June and July.

Cecil Michael McLaury, Special Instructor, NSF Secondary Science Training Program, \$312.50 per month, 5/8 time, June and July.

Juanita Kaiser O'Donley, Special Instructor, \$276 per month, 1/2 time, June and July.

Glenn Joseph Wimbish, Special Instructor, \$456 per month, June and July.

Sook-yon Byon, Graduate Assistant, NSF Secondary Science Training Program, \$175 per month, 1/2 time, June and July.

Waldo Peter Caponecchi, Graduate Assistant, Summer Institute in Mathematics, \$195 per month, 1/2 time, June and July.

Jimmie Walter Choate, Graduate Assistant, Academic Year Institute in Mathematics, \$222.22 per month, 1/2 time, June and July.

Robert D. Gow, Graduate Assistant, \$146.25 per month, 3/8 time, June and July.

Benigno B. Jorque, Graduate Assistant, Summer Institute in Mathematics, \$216 per month, 1/2 time, June and July.

July 14, 1966

8641

Margaret Elizabeth Salmon, Graduate Assistant, Academic Year Institute in Mathematics, \$222.22 per month, 1/2 time, July and August.

Jalal Samimi, Graduate Assistant, Summer Institute in Mathematics, \$105 per month, 1/4 time, June and July.

Music

Marjory Lunt Cornelius, Special Instructor, \$30 per month, part time, June and July.

Dayna L. Fisher, Special Instructor, \$30 per month, part time, June and July.

Elizabeth J. Johnson, Special Instructor, \$132.50 per month, part time, June and July.

Aurora G. Smith, Special Instructor, \$90 per month, part time, June and July.

Earl Morgan Thomas, Special Instructor, \$252.50 per month, part time, June and July.

Dewey Tracy Christian, Teaching Assistant, \$60 per month, part time, June and July.

Jake Manzanares, Teaching Assistant, \$30 per month, part time, June and July.

Robert H. Giles, Graduate Assistant, changed from \$108 per month, 1/4 time, to \$183 per month, 1/2 time, June and July.

Peace Corps - El Salvador Project

Howard P. Clemens, Technical Director, \$1,149.33 per month, June 1 to September 1, 1966.

Physical Education

Shirley Ann Alexander, Graduate Assistant, \$97.50 per month, 1/4 time, June and July.

Lawrence D. Nielson, Graduate Assistant, \$97.50 per month, 1/4 time, June and July.

Physics

Kalman Kutszegi, Graduate Assistant, \$240 per month, 1/2 time, June and July.

July 14, 1966

8642

Psychology

Ruth Mansfield Golas, Graduate Assistant, \$200 per month, 1/2 time, June and July.

Zoology

Benjamin R. Allen, Graduate Assistant, \$216 per month, 1/2 time, June and July.

Bennie R. Ford, Graduate Assistant, \$216 per month, 1/2 time, June and July.

Robert Gale Richardson, Graduate Assistant, \$216 per month, 1/2 time, June and July.

WNAD Radio

Ansel H. Resler, Associate Professor of Speech, Director of Academic Services, \$801 per month, June 1 to September 1, 1966.

Approved on motion by Regent Calvert.

**GRADUATE ASSISTANTS**

**LEAVE OF ABSENCE WITHOUT PAY:**

Robert L. Bailey, Southwest Center for Human Relations Studies, June 1 to September 1, 1966.

**APPOINTMENTS:**

Fredrick L. Myers, Art, \$1,000 for 9 months, 1/4 time, September 1, 1966.

Paul F. Nielsen, Art, \$1,000 for 9 months, 1/4 time, September 1, 1966.

Roxana Calinson, Botany and Microbiology, \$2,000 for 9 months, 1/2 time, September 1, 1966.

John L. Olinger, Chemical Engineering, \$2,400 for 9 months, 1/2 time, September 1, 1966.

Charles Ralph Andrews, Education, \$2,200 for 9 months, 1/2 time, September 1, 1966.

Howard Hollis Farris, Education, \$2,200 for 9 months, 1/2 time, September 1, 1966.

July 14, 1966

8643

Owen Rodman Jenkins, Education, \$2,200 for 9 months, 1/2 time, September 1, 1966.

Janice E. Million, Education, \$2,200 for 9 months, 1/2 time, September 1, 1966.

Hershel Dean Thornburg, Education, \$2,200 for 9 months, 1/2 time, September 1, 1966.

Douglas Henry Verdonck, Education, \$2,200 for 9 months, 1/2 time, September 1, 1966.

William Edward Ham, Electrical Engineering, \$1,000 for 9 months, 1/4 time, September 1, 1966.

James Don McMullen, Electrical Engineering, \$1,000 for 9 months, 1/4 time, September 1, 1966.

Thomas Denman Neier, Jr., Electrical Engineering, \$2,200 for 9 months, 1/2 time, September 1, 1966.

Javad M. Zoroofchi, Electrical Engineering, \$2,200 for 9 months, 1/2 time, September 1, 1966.

Harapana Halli Mallareddy, Engineering, \$2,400 for 9 months, 1/2 time, September 1, 1966.

Shirley Marie Butcher, English, \$1,800 for 9 months, 1/2 time, September 1, 1966.

Carl Edward Carter, English, \$1,800 for 9 months, 1/2 time, September 1, 1966.

Janet Christou Constantinides, English, \$2,000 for 9 months, 1/2 time, September 1, 1966.

Michael Ray Cross, English, \$1,800 for 9 months, 1/2 time, September 1, 1966.

Bernard Glassman, English, \$1,800 for 9 months, 1/2 time, September 1, 1966.

Sharron C. Muskrat, English, \$1,800 for 9 months, 1/2 time, September 1, 1966.

William Collins Robert, English, \$2,000 for 9 months, 1/2 time, September 1, 1966.

Terry William Crown, Geography, \$1,800 for 9 months, 1/2 time, September 1, 1966.

July 14, 1966

8644

Richard Allan Outwater, Geography, \$1,800 for 9 months, 1/2 time, September 1, 1966.

Ralph Douglas Pierce, Geography, \$2,000 for 9 months, 1/2 time, September 1, 1966.

Don R. Youts, Geography, \$1,800 for 9 months, 1/2 time, September 1, 1966.

Robert Norris Chaddock, Journalism, \$900 for 9 months, 1/4 time, September 1, 1966.

Ronald Eugene Keener, Journalism, \$450 for 4½ months, 1/4 time, September 1, 1966.

Edward Clinton Sanders, III, Journalism, \$450 for 4½ months, 1/4 time, September 1, 1966.

Ralph Howenstine, Mathematics, \$1,900 for 9 months, 1/2 time, September 1, 1966.

Richard Anthony Jainchell, Mathematics, \$2,000 for 9 months, 1/2 time, September 1, 1966.

S. Paul Lazarus, Mathematics, \$1,000 for 9 months, 1/4 time, September 1, 1966.

Morris Eugene Rill, Mathematics, \$1,900 for 9 months, 1/2 time, September 1, 1966.

Val Gene Shirley, Mathematics, \$2,000 for 9 months, 1/2 time, September 1, 1966.

Rose Ellen Chace, Modern Languages, \$1,800 for 9 months, 1/2 time, September 1, 1966.

Patrick W. Ehrig, Modern Languages, \$1,800 for 9 months, 1/2 time, September 1, 1966.

Malcolm H. Patterson, Modern Languages, \$1,800 for 9 months, 1/2 time, September 1, 1966.

Francisco Armando Rios, Modern Languages, \$1,000 for 4½ months, 1/2 time, September 1, 1966.

Lerlene Kathleen Caldwell, Physical Education, \$2000 for 9 months, 1/2 time, September 1, 1966.

Stephen Kurt Widder, Physical Education, \$2,000 for 9 months, 1/2 time, September 1, 1966.

July 14, 1966

8645

Jean G. Holloway, Sociology, \$900 for 9 months, 1/4 time, September 1, 1966.

Richard Lee Stieber, Sociology, \$900 for 9 months, 1/4 time, September 1, 1966.

Joan Rodman Wolfgang, Sociology, \$1,800 for 9 months, 1/2 time, September 1, 1966.

Burnard L. Pearce, University Guidance Service, \$2,400 for 12 months, 1/2 time, July 1, 1966 to July 1, 1967.

Martin Neal Resnick, University Guidance Service, \$2,400 for 12 months, 1/2 time, July 1, 1966 to July 1, 1967.

Roy Dewayne Ikenberry, Zoology, \$2,000 for 9 months, 1/2 time, September 1, 1966.

**CHANGE:**

Paul D. Dooley, Modern Languages, salary increased from \$1,800 to \$2,000 for 9 months, 1/2 time, September 1, 1966.

**RESIGNATIONS:**

Lindell Lester Ball, English, declined to accept 1966-67 appointment.

Victor John Hegemann, Mathematics, declined to accept 1966-67 appointment.

Betsy Feild Bass, Modern Languages, declined to accept 1966-67 appointment.

Joan Arlene Buchanan, Psychology, declined to accept 1966-67 appointment.

Cleve Darwin Burton, Zoology, declined to accept 1966-67 appointment.

David C. Change, University Guidance Service, June 17, 1966.

Approved on motion by Regent Sparks.

President Cross presented the attached list of faculty salary adjustments that were recommended by the Deans. These adjustments were made possible, of course, by the increase in the general fee which becomes effective September 1, 1966.

President Cross said that in keeping with the commitments that were made when recommending the increase in fees, all funds estimated to be available from this increase, after setting aside a conservative working surplus and making a small adjustment in salaries for classified staff,

CHANGES IN TEACHING SALARY RATES  
FCR 1966-67 (JULY 14, 1966)

Arts and Sciences

<u>Name</u>	<u>Rank</u>	<u>Months</u>	<u>Present Salary</u>	<u>Proposed Salary</u>
<u>Anthropology</u>				
R. E. Bell	Professor	9	\$12,900	\$14,172
A. F. Ricciardelli	Asst. Prof.	9	8,520	9,612
<u>Biological Station</u>				
J. K. Greer	Asst. Director	12	10,596	11,124
<u>Botany and Microbiology</u>				
H. W. Larsh	Res. Prof.	9	17,400	19,600
N. H. Eoka	Res. Prof.	9	14,100	15,624
E. L. Rice	Professor	9	13,700	15,252
L. M. Ehrbaugh	Professor	9	13,200	14,520
G. J. Goodman	Professor	9	12,900	14,172
J. B. Clark	Professor	9	12,900	14,520
W. T. Penfound	Professor	9	12,300	13,500
R. E. Collier	Assoc. Prof.	12	12,900	14,172
D. E. Anderegg	Assoc. Prof.	12	11,700	12,863
G. C. Cozad	Assoc. Prof.	9	9,384	10,344
J. J. Skvarla	Asst. Prof.	12	12,000	12,552
J. H. Lancaster	Asst. Prof.	9	8,520	9,384
D. C. Cox	Asst. Prof.	9	8,316	8,940
F. A. Rinehart	Asst. Prof.	9	7,356	7,728
W. O. Felkner	Instructor	9	7,008	7,176
<u>Chemistry</u>				
S. E. Wender	Res. Prof.	9	17,400	19,600
J. C. Colbert	D. R. B. Prof.	9	15,000	16,000
G. W. Murphy	Professor	12	18,000	19,200
L. S. Cieraszko	Professor	9	13,800	14,888
B. O. Haston	Professor	9	12,300	13,176
H. H. Rowley	Professor	9	12,300	13,176
S. D. Christian	Professor	9	11,700	12,864
A. J. Weinheimer	Professor	9	11,700	12,552
H. H. Bliss	Professor	9	10,092	10,860
H. E. Affsprung	Professor	9	10,092	11,964
N. Fogel	Assoc. Prof.	9	9,384	10,344
J. J. Bloomfield	Assoc. Prof.	9	9,384	11,124
D. van der Helm	Assoc. Prof.	9	9,384	11,124
F. J. Schmitz	Asst. Prof.	9	10,344	10,860
E. C. Smith	Asst. Prof.	9	8,724	9,612
S. C. Neely	Asst. Prof.	9	8,520	9,612
S. G. Martin	Special Inst.	9	5,100	5,364
<u>Classics</u>				
P. J. Nolan	Professor	9	10,092	11,124
I. J. Thomson	Vist. Asst. Prof.	9	7,176	7,536
<u>English</u>				
J. P. Pritchard	Res. Prof.	9	14,700	16,000
P. G. Ruggiers	D. R. B. Prof.	12	16,200	17,600
V. A. Elconin	McCas. Prof.	12	16,800	18,400
R. R. Male	Professor	9	14,000	15,252
B. I. Granger	Professor	9	11,700	13,500
R. C. Bambas	Professor	9	10,596	11,400

<u>Name</u>	<u>Rank</u>	<u>Months</u>	<u>Present Salary</u>	<u>Proposed Salary</u>
<u>English (cont.)</u>				
D. P. French	Assoc. Prof.	9	\$10,092	\$11,400
A. J. Fritz	Assoc. Prof.	9	8,724	9,612
M. O. Van Den Bark	Assoc. Prof.	9	8,112	8,520
G. Marshall	Asst. Prof.	9	8,112	8,940
B. Evans	Asst. Prof.	9	7,008	7,536
H. Edwards	Asst. Prof.	9	6,516	7,003
L. D. Haag	Asst. Prof.	9	6,204	6,516
J. J. Yoch	To Asst. Prof.	9	7,536	8,940
D. H. Fritz	Special Inst.	9	5,772	6,204
<u>Geography</u>				
A. H. Doerr	Professor	9	15,700	16,800
J. W. Morris	Professor	12	15,300	16,400
Ralph E. Olson	Professor	9	12,600	13,500
Harry E. Hoy	Professor	9	12,000	13,176
S. M. Sutherland	Assoc. Prof.	9	9,612	11,124
E. L. Myles	Instructor	9	7,536	8,112
<del>J. Sutherland</del>	<del>Special Inst.</del>			<del>1,488</del>
<u>Geology</u>				
L. R. Wilson	Res. Prof.	9	15,300	16,400
F. A. Melton	Professor	9	11,700	12,552
P. K. Sutherland	Professor	9	11,124	12,552
C. A. Merritt	Professor	9	10,860	11,400
G. G. Huffman	Professor	9	10,344	10,596
David B. Kitts	Professor	9	10,344	12,252
J. A. Norden	Professor	9	10,092	11,124
E. L. Lucas	Professor	9	9,384	9,852
R. W. Harris	Professor	9	8,112	8,520
D. A. Busch	Visiting Prof.	4½	7,500	8,100
E. C. Stoever, Jr.	Assoc. Prof.	9	9,156	10,344
A. J. Myers	Assoc. Prof.	9	8,316	9,156
G. T. Stone	Asst. Prof.	9	8,112	8,940
<u>History</u>				
D. H. D. Roller	McCas. Prof.	12	16,200	17,600
W. E. Livezey	Regent Prof.	9	18,100	18,800
W. E. Hollon	Professor	9	13,800	15,624
Brisson D. Gooch	Professor	9	13,800	15,624
A. M. Gibson	Professor	12	13,800	16,000
M. L. Moorhead	D. R. B. Prof.	9	13,500	16,000
D. J. Berthrong	Professor	9-12	12,000	16,000
P. W. Buchanan	Professor	9	10,092	11,124
L. F. Smith	Professor	9	10,092	11,124
T. M. Smith	Assoc. Prof.	9	9,612	10,860
W. H. Maehl	Assoc. Prof.	9	9,384	10,596
K. I. Dailey	Assoc. Prof.	9	9,156	10,092
A. H. DeRosier	Assoc. Prof.	9	8,724	10,344
R. D. Buhite	Asst. Prof.	9	7,536	8,316
R. L. Reigle	Instructor	9	7,356	8,112
L. Welsh	Special Inst.	9	6,204	7,008
<u>Home Economics</u>				
M. Warren	Professor	12	12,000	13,176
G. L. Fittro	Professor	9	8,112	9,156
D. K. Preston	Professor	9	7,920	8,940
M. E. Kraynak	Assoc. Prof.	9	9,156	10,344
S. R. Crim	Assoc. Prof.	9	7,920	8,724
Frances Seeds	Assoc. Prof.	9	6,840	7,356
C. S. Dumas	Vist. Assoc. Prof.	9	6,516	7,176
H. B. Turkington	Vist. Assoc. Prof.	9	1,590	1,710
R. C. Niemyt	Special Inst.	9	6,360	6,516



<u>Name</u>	<u>Rank</u>	<u>Months</u>	<u>Present Salary</u>	<u>Proposed Salary</u>
<u>Home Economics (cont.)</u>				
A. E. Whatley	Instructor	9	\$ 5,916	\$ 6,360
P. Lester	Special Inst.	9	6,360	6,516
L. M. Powell	Special Lect.	9	5,957	6,100
<u>Home Economics Nursery School</u>				
L. S. Guerkink	Instructor	9	6,516	6,672
W. L. Rauch	Special Inst.	9	4,092	4,296
<u>Journalism</u>				
C. J. Holland	Professor	12	13,800	15,252
J. R. Whitaker	Professor	9	11,400	12,552
L. H. Rice	Professor	9	10,596	11,400
R. V. Peterson	Professor	9	10,344	11,400
W. F. Harris	Professor	9	10,092	11,124
J. H. Casey	Professor	9	9,852	11,400
D. P. Bergin	Professor	9	9,852	11,124
G. E. Ray	Professor	9	8,520	8,940
L. B. Moore	Assoc. Prof.	12	8,520	9,156
D. V. Swain	Assoc. Prof.	9	4,806	5,298
R. L. Bryson	Asst. Prof.	9	7,920	9,156
<u>Library Science</u>				
F. J. Bertalan	Assoc. Prof.	12	15,300	16,400
F. L. Carroll	Asst. Prof.	9	7,920	8,724
I. R. Tomberlin	Asst. Prof.	9	7,356	8,316
<u>Mathematics and Astronomy</u>				
W. T. Reid	Phillips Prof.	9	20,600	22,000
G. M. Ewing	Res. Prof.	9	15,300	17,200
C. E. Springer	D. R. B. Prof.	9	15,600	17,200
R. V. Andree	Professor	12	16,500	18,400
T. K. Pan	Professor	9	14,400	16,000
J. C. Brixey	Professor	9	13,500	14,520
A. F. Bernhart	Professor	9	11,700	12,552
W. N. Huff	Professor	9	11,700	12,552
B. S. Whitney	Professor	9	10,344	11,124
H. V. Huneke	Assoc. Prof.	9	11,400	12,252
G. Levy	Assoc. Prof.	9	11,124	11,964
E. LaFon	Assoc. Prof.	9	10,092	10,860
A. S. Davis	Assoc. Prof.	9	10,092	12,252
M. C. Ayer	Assoc. Prof.	9	9,384	10,344
R. J. Hora	Asst. Prof.	9	8,940	9,612
R. C. Dragoo	Assoc. Prof.	9	7,176	7,536
D. L. Patton	Special Inst.	9	6,060	7,728
L. A. Iverson	Special Inst.	9	5,496	6,060
G. J. Wimbish	Special Inst.	9	4,188	4,404
J. K. O'Donley	Special Inst.	9	4,188	4,404
Vice Slater	Special Inst.	9	4,188	4,404
<u>Modern Languages</u>				
B. A. Clement	D. R. B. Prof.	9	12,900	14,172
L. Dunham	Professor	12	16,500	18,000
L. Poston	Professor	9	12,000	12,864
G. Wines	Professor	9	11,124	12,252
E. H. Eichholz	Professor	9	10,344	11,400
W. H. Bowen	Professor	9	10,092	11,124
J. P. Artman	Assoc. Prof.	12	11,400	12,552
S. Feiler	Assoc. Prof.	9	10,344	11,400
J. H. Abbott	Assoc. Prof.	9	10,344	11,400

<u>Name</u>	<u>Rank</u>	<u>Months</u>	<u>Present Salary</u>	<u>Proposed Salary</u>
<u>Modern Languages (cont.)</u>				
J. N. Alley	Assoc. Prof.	9	\$ 7,920	\$ 8,724
S. Sanders	Assoc. Prof.	9	7,356	7,920
D. M. Penot	Asst. Prof.	9	8,520	8,940
J. E. Hyde	Asst. Prof.	9	8,316	8,940
M. B. Tolson	Asst. Prof.	9	8,316	8,940
J. G. Larson	Asst. Prof.	9	8,112	9,156
G. Chmelev	Instructor	9	7,356	7,920
R. C. Rentz	Instructor	9	7,356	7,920
J. J. Kincaid	Instructor	9	7,356	7,920
A. P. Talton	Special Inst.	9	6,060	7,008
J. F. Velez	Instructor	9	4,512	7,008
<u>Philosophy</u>				
G. E. Mueller	Res. Prof.	9	14,400	15,624
J. C. Feaver	D. R. B. Prof.	9	14,400	15,624
C. W. Berenda	Professor	9	12,600	13,836
F. J. Kovach	Skogsberg Assoc. Prof.	9	10,596	11,400
W. Horosz	Assoc. Prof.	9	9,384	10,092
K. R. Merrill	Asst. Prof.	12	10,092	10,860
R. W. Shahan	Instructor	9	7,596	7,728
<u>Physical Education</u>				
W. F. Eick	Professor	12	12,600	13,836
Virginia Morris	Professor	9	8,724	9,852
Maurine Bowling	Professor	9	8,316	8,940
J. C. Weber	Asst. Prof.	9	8,316	8,940
P. A. Philp	Asst. Prof.	9	6,672	7,008
C. R. Buck	Instructor	9	5,916	7,008
<u>Physics</u>				
R. G. Fowler	Res. Prof.	9	15,900	18,400
C. C. Lin	Res. Prof.	9	14,100	16,400
R. Howard	Professor	12	15,900	17,200
C. A. Plint	Professor	9	12,900	14,172
S. Broersma	Professor	9	10,860	11,964
J. R. Burwell	Assoc. Prof.	12	12,000	13,176
R. M. St. John	Assoc. Prof.	9	10,596	11,124
S. E. Babb	Assoc. Prof.	9	10,092	11,124
J. M. Canfield	Asst. Prof.	9	9,612	10,092
Jack Cohn	Asst. Prof.	9	8,940	9,384
<u>Political Science</u>				
J. G. Eriksen	Professor	12	13,500	14,880
O. E. Benson	Professor	9	12,600	13,836
W. F. Scheffer	Professor	12	12,300	13,500
J. P. Duncan	Professor	9	11,700	12,864
R. G. Hall	Professor	9	11,124	12,252
J. C. Pray	Professor	9	10,860	11,964
H. A. Holloway	Assoc. Prof.	9	9,384	10,344
J. W. Wood	Assoc. Prof.	9	9,156	10,092
R. D. Baker	Asst. Prof.	9	8,940	9,612
R. S. Wells	Asst. Prof.	9-12	8,724	11,676
H. K. Schellenger	Asst. Prof.	9	8,316	8,940
J. D. Johnson	Instructor	9	7,536	7,920
D. E. Secrest	Instructor	9	7,536	7,728

<u>Name</u>	<u>Rank</u>	<u>Months</u>	<u>Present Salary</u>	<u>Proposed Salary</u>
<u>Psychology</u>				
M. Sherif	Res. Prof.	12	\$17,100	\$18,400
W. B. Lemmon	Professor	12	15,600	17,200
M. K. Temerlin	Professor	12	13,500	15,624
C. R. Oldroyd	Professor	9	8,724	9,156
W. Terris	Asst. Prof.	9	8,940	9,384
A. E. Dahlke	Asst. Prof.	9	8,724	9,384
V. M. Gatch	Asst. Prof.	9	8,520	9,156
W. W. Trousdale	Asst. Prof.	9	8,316	9,156
A. D. Smouse	Asst. Prof.	9	8,112	8,520
<u>Regional and City Planning</u>				
J. L. Rodgers	Professor	12	10,596	11,964
R. L. Lehr	Asst. Prof.	9	3,504	3,768
<u>Social Work</u>				
C. S. Clifton	Professor	12	13,500	14,880
J. J. Rhyme	Professor	12	9,852	10,860
L-M. P. Muse	Assoc. Prof.	12	9,852	10,596
Edith Schroeder	Assoc. Prof.	9	8,520	9,384
L. I. McCabe	Asst. Prof.	10	8,724	9,156
M. H. Kime	Asst. Prof.	10	7,787	8,173
L. H. Ginsberg	Assoc. Prof.	9	9,156	10,092
R. W. Katner	Instructor	9	8,316	8,940
<u>Sociology</u>				
R. E. Hilbert	Assoc. Prof.	12	12,000	13,500
F. B. Silberstein	Assoc. Prof.	9	9,156	9,852
S. E. Shively	Asst. Prof.	9	8,520	9,384
D. A. Whitney	Asst. Prof.	9	8,112	8,724
R. E. Mendoza	Instructor	9	6,840	7,176
<u>Speech</u>				
C. P. Green	Regent Prof.	9	10,596	11,964
R. E. Nebergall	Professor	12	12,900	14,172
S. P. Lawton	Professor	9	10,344	11,124
J. E. Douglas	Professor	9	9,852	10,860
C. H. Ritzman	Professor	9	7,356	7,356
E. C. Nuttall	Assoc. Prof.	9	10,860	11,400
A. H. Resler	Assoc. Prof.	9	9,612	10,596
P. A. Barefield	Asst. Prof.	9	8,520	9,384
W. R. Brown	Asst. Prof.	9	8,520	9,156
B. B. Hutchinson	Asst. Prof.	9	8,520	8,940
R. L. Hankowsky	Asst. Prof.	9	6,060	6,516
<u>Zoology</u>				
G. M. Sutton	Res. Prof.	9	15,300	17,600
J. T. Self	Professor	9	14,100	15,252
C. E. Hopla	Professor	12	15,900	17,600
P. R. David	Professor	9	11,700	12,864
R. A. Goff	Professor	9	11,700	12,864
H. P. Brown	Professor	9	10,344	11,400
C. C. Carpenter	Professor	9	10,344	12,552
A. N. Bragg	Professor	9	9,612	10,860
Gerald Braver	Assoc. Prof.	9	8,940	9,852
K. S. Mills	Assoc. Prof.	9	8,940	9,852
Frank Seto	Asst. Prof.	9	8,724	9,384
F. J. Sonleitner	Asst. Prof.	9	8,520	8,940
H. B. Haines	Asst. Prof.	9	8,112	9,156
J. M. Augenfeld	Asst. Prof.	9	7,536	7,728
J. R. Ramsey	Asst. Prof.	9	1,800	2,000

College of Business Administration

<u>Name</u>	<u>Rank</u>	<u>Months</u>	<u>Present Salary</u>	<u>Proposed Salary</u>
<u>Accounting</u>				
V. H. Upchurch	Professor	12	\$14,400	\$16,000
T. P. Herrick, Jr.	Professor	9	11,124	12,864
W. C. McGrew	Professor	9	9,612	12,252
T. P. Goggans	Assoc. Prof.	9	9,612	11,124
H. A. Brown, Jr.	Assoc. Prof.	9	8,520	9,612
Donald L. Dyle	Asst. Prof.	9	8,520	9,612
Alva A. Cummings	Special Inst.	9	6,672	7,008
<u>Administrative Services</u>				
R. R. White	Professor	12	14,400	16,000
A. L. Cosgrove	Professor	9	10,092	11,124
B. D. Holcomb	Professor	9	8,724	9,852
A. S. Lis	Assoc. Prof.	9	9,852	10,596
F. L. Frueh	Asst. Prof.	9	8,112	8,316
D. V. Smith	Asst. Prof.	9	7,008	7,920
Robert D. Van Auken	Instructor	9	6,516	6,840
P. D. Keck	Instructor	9	5,772	6,516
J. M. Kimrey	Special Inst.	9	5,628	6,360
<u>Economics</u>				
W. N. Peach	Res. Prof.	9	13,500	15,252
J. E. Reese	D. R. B. Prof.	9	13,800	15,252
F. R. Calla	Professor	12	12,600	12,864
A. J. Kondonassis	Professor	9-12	12,300	16,400
P. A. Brinker	Professor	9	11,400	12,552
E. F. Crim	Professor	9	11,400	13,176
P. D. Dickens	Visit. Prof.	9	4,740	4,860
J. E. Hibdon	Assoc. Prof.	9	12,000	12,864
J. L. Robinson	Assoc. Prof.	9	9,852	11,400
J. W. Rowe, Jr.	Asst. Prof.	9	9,156	10,596
G. H. Anderson	Asst. Prof.	9	8,940	10,092
<u>Finance</u>				
D. R. Childress	Professor	12	17,000	18,600
J. M. Murphy	Professor	12	13,200	14,520
R. A. Ford	Professor	9	10,596	12,864
G. L. Noah	Professor	9	9,156	10,344
W. B. Prickett	Assoc. Prof.	12	9,384	10,860
<u>Management</u>				
R. B. Shuman	Res. Prof.	9	17,400	18,400
W. H. Keown	D. R. B. Prof.	9	14,100	15,252
L. D. Bishop	Professor	12	14,400	16,400
S. E. Robb	Assoc. Prof.	9	10,344	11,400
D. A. Woolf	Assoc. Prof.	9	9,852	10,860
R. L. Boyes	Asst. Prof.	9	9,852	10,860
<u>Marketing</u>				
M. C. Phillips	Professor	12	13,500	15,624
J. A. Constantin	Professor	9	12,000	13,836
J. E. Mertes, Jr.	Professor	9	10,860	12,552
D. M. Crites	Professor	9	10,596	12,252
Norman Kanguan	Asst. Prof.	9	10,092	10,596

College of Education

<u>Name</u>	<u>Rank</u>	<u>Months</u>	<u>Present Salary</u>	<u>Proposed Salary</u>
W. B. Ragan	D. R. B. Prof.	12	\$15,900	\$18,000
J. F. Parker	Professor	12	18,000	18,000
Franklin Parker	Professor	12	15,900	18,000
G. A. Porter	Professor	12	15,000	17,600
W. R. Fulton	Professor	12	13,800	17,000
L. P. Williams	Professor	12	13,700	17,000
Claude Kelley	Professor	12	14,400	16,800
P. T. Teska	Professor	12	12,900	13,836
R. E. Ohm	Professor	12	12,600	15,624
H. R. Angelino	Professor	12	12,300	13,500
G. R. Snider	Professor	12	12,300	14,172
J. W. Renner	Professor	12	12,000	15,624
O. J. Rupiper	Professor	12	11,400	13,176
H. J. Parker	Professor	12	11,400	13,176
F. A. Sloan	Professor	12	11,400	13,176
F. F. Gaither	Professor	12	10,860	11,964
M. C. Petty	Professor	12	10,596	11,676
L. T. Rogers	Professor	12	10,344	11,400
H. R. Hengst	Assoc. Prof.	12	10,860	12,864
R. A. Curry	Assoc. Prof.	12	10,860	12,552
P. Unger	Assoc. Prof.	12	10,344	11,400
V. J. Lindsay	Asst. Prof.	12	9,612	10,860
O. D. Johns	Professor	12	13,800	16,000
E. Lewis	Assoc. Prof.	12	10,596	11,964
R. Fell	Assoc. Prof.	12	8,940	10,092
E. Steanson	Assoc. Prof.	12	8,940	10,092
M. Chisolm	Assoc. Prof.	12	8,940	10,092
F. Dunham	Assoc. Prof.	12	8,940	10,092
H. Stone	Asst. Prof.	9	7,728	8,316
B. Jewell	Asst. Prof.	9	7,356	8,520
L. Huddleston	Asst. Prof.	9	7,008	7,356
G. Evans	Asst. Prof.	9	6,840	7,536
C. Hackler	Special Inst.	12	9,384	10,344
B. Clement	Special Inst.	9	7,728	8,724
L. Friedlander	Special Inst.	9	6,360	7,356
M. Holter	Special Inst.	9	3,102	3,336
M. Mills	Special Inst.	9	5,100	5,364
C. Chew	Special Inst.	9	4,404	4,512

COLLEGE OF ENGINEERING

<u>Name</u>	<u>Rank</u>	<u>Months</u>	<u>Present Salary</u>	<u>Proposed Salary</u>
<u>Dean's Office</u>				
R. D. Daniels	Professor	12	\$17,800	\$19,600
<u>Aerospace and Mechanical Engineering</u>				
L. A. Comp	D. R. B. Prof.	9	11,400	12,552
D. B. Turkington	Professor	12	13,200	14,880
C. W. Bert, III	Professor	9	12,900	14,520
W. J. Ewbank	Professor	9	10,092	11,124
E. M. Sims	Professor	9	9,384	11,400
H. K. Bone	Associate Professor	9	9,156	10,344
J. A. Payne	Assistant Professor	9	10,344	10,596
D. G. Harden	Assistant Professor	9	9,852	11,400
F. J. Appl	Assistant Professor	9	9,612	10,344
Raymond V. Kaser	Assistant Professor	9	9,156	10,092
D. M. Egle	Assistant Professor	9	9,156	10,092
<u>Architecture</u>				
J. G. York	Professor	12	14,400	16,400
R. N. Kuhlman	Professor	12	13,800	14,880
Mendel Glickman	Professor	9	10,596	11,964
J. E. Smay	Professor	9	10,344	11,964
William H. Wilson	Professor	9	9,384	10,860
N. L. Byrd	Professor	9	9,384	10,596
F. D. Shellabarger	Professor	9	9,384	10,596
W. S. Burgett	Professor	9	8,724	10,596
J. R. Kabriel	Assistant Professor	9	7,356	8,316
<u>Chemical Engineering and Material Sciences</u>				
Laurence S. Reid	Professor	9	8,940	10,092
F. M. Townsend	Associate Professor	9	9,852	10,860
M. L. McGuire	Assistant Professor	9	10,860	11,400
R. J. Block	Assistant Professor	9	10,860	11,400
C. P. Colver	Assistant Professor	9	9,852	11,400
R. C. Jerner	Assistant Professor	9	9,852	10,344
<u>Civil Engineering and Environmental Science</u>				
G. W. Reid	Professor	12	17,500	19,200
J. R. Matlock	Professor	9	10,092	11,676
J. W. Keeley	Professor	9	9,612	10,344
F. R. Mouck	Professor	9	8,316	9,384
J. G. Laguros	Associate Professor	9	12,600	13,176
E. H. Klehr	Associate Professor	12	12,300	14,520
M. J. Wilcomb, Jr.	Associate Professor	12	12,000	12,864
W. W. Aldridge	Associate Professor	9	10,092	10,860
Fulton K. Fears	Associate Professor	9	3,768	4,158
Jimmy F. Harp	Assistant Professor	9	10,596	10,860
Robert Young Nelson	Assistant Professor	9	10,092	10,596
Himan Aldridge Gillespie	Assistant Professor	9	9,156	9,852
Dan E. Guyer	Assistant Professor	12	7,536	8,112
Brandon H. Griffith	Assistant Professor	9	7,176	8,112

<u>Name</u>	<u>Rank</u>	<u>Months</u>	<u>Present Salary</u>	<u>Proposed Salary</u>
<u>Electrical Engineering</u>				
T. D. Shockley, Jr.	Professor	9	\$12,900	\$13,176
Gerald Tuma	D. R. B. Prof.	9	11,400	13,176
C. L. Farrar	Professor	9	10,860	11,400
A. P. Challenner	Professor	9	8,724	9,156
C. E. Harp	Associate Professor	9	8,940	9,156
J. Reynolds	Assistant Professor	9	10,092	11,124
Clovis R. Haden	Assistant Professor	9	9,384	10,860
C. T. Constantinides	Assistant Professor	9	9,384	9,852
<u>Engineering, Department of</u>				
C. M. Sliepcevich	Research Professor	9	20,000	22,000
Frank C. Morris	Professor	9	8,724	9,852
Sam C. Holland	Professor	9	7,536	8,520
W. A. Dumas	Assistant Professor	9	6,840	7,356
<u>Industrial Engineering</u>				
William L. Cory	Professor	9	8,316	9,156
Robert A. Shapiro	Associate Professor	12	15,000	15,252
Richard A. Terry	Associate Professor	9	14,000	15,252
<u>Meteorology</u>				
Walter J. Saucier	Professor	9	12,300	13,836
Yoshikazu Sasaki	Associate Professor	9	9,612	11,124
<u>Petroleum and Geological Engineering</u>				
J. M. Campbell	Erle P. Halliburton Professor	9	15,300	16,400
D. E. Menzie	Professor	12	14,700	16,400
Carl A. Moore	Professor	9	10,344	11,400
A. W. McCray	Professor	9	9,384	10,596
P. J. Root	Associate Professor	9	11,124	11,964
P. L. Moore	Associate Professor	9	10,092	11,400

College of Fine Arts

<u>Name</u>	<u>Rank</u>	<u>Months</u>	<u>Present Salary</u>	<u>Proposed Salary</u>
<u>Art</u>				
J. R. Taylor	D. R. B. Prof.	9	\$12,300	\$15,252
John O'Neil	Professor	9	11,400	12,552
W. H. Smith	Professor	9	10,344	11,400
R. D. Corsaw	Professor	9	10,092	11,124
E. A. Bavinger	Professor	9	9,384	10,860
Emilio Amero	Professor	9	8,112	8,724
Samuel Olkinetzky	Assoc. Prof.	9	8,724	9,852
J. L. Henkle	Assoc. Prof.	9	8,520	9,384
C. E. Lee	Assoc. Prof.	9	7,920	8,940
J. C. Lewandowski	Instructor	9	5,628	6,060
J. R. Hadley	Instructor	9	5,496	6,060
J. V. Atteberry	Instructor	9	5,496	6,060
<u>Drama</u>				
N. S. Eek	Professor	12	13,200	14,520
C. B. Cass	Professor	9	10,596	11,964
C. C. Suggs	Professor	9	9,612	10,596
H. J. Gregory	Professor	9	8,724	10,092
T. W. Edge	Assoc. Prof.	9	9,156	9,852
A. L. Mortensen	Assoc. Prof.	9	8,724	9,852
R. D. Larson	Assoc. Prof.	9	8,520	9,852
Miguel Terekhov	Asst. Prof. and Artist in Resi- dence	9	10,344	11,676
N. E. Gade	Asst. Prof.	9	7,920	8,520
Yvonne Terekhov	Artist in Residence	9	5,046	5,562
<u>Music</u>				
S. H. Norton	Res. Prof.	9	12,300	15,252
Mildred Andrews	D. R. B. Prof.	9	12,000	15,252
C. M. Stookey	Professor	12	12,600	14,172
Harrison Kerr	Professor	9	11,400	11,964
L. H. Haug	Professor	12	10,596	11,964
O. S. Smith	Professor	9	9,384	10,596
Lytle Powell	Professor	9	9,156	10,596
G. B. de Stwolinski	Professor	9	8,612	9,852
J. H. Benton	Professor	9	8,520	9,156
G. A. Braught	Assoc. Prof.	12	10,092	11,400
D. L. Mills	Assoc. Prof.	9	9,156	10,092
R. G. Mathis	Assoc. Prof.	9	8,940	10,092
R. C. Smith	Assoc. Prof.	9	8,724	9,612
E. L. Trumble	Assoc. Prof.	9	8,112	9,156
D. B. Bell	Assoc. Prof.	9	8,112	9,156
C. K. Hoag	Assoc. Prof.	9	8,112	9,156
K. K. Wallingford	Assoc. Prof.	9	7,920	9,156
R. W. Ross	Assoc. Prof.	9	7,536	8,520
C. M. Bryant	Assoc. Prof.	9	7,536	8,520
E. M. Parham	Assoc. Prof.	9	7,176	8,112
D. S. Ward	Assoc. Prof.	9	7,008	7,356
W. P. Griffin	Assoc. Prof.	9	6,672	7,356
L. A. Gauger	Asst. Prof.	9	7,356	8,112
P. E. Roby	Asst. Prof.	9	7,176	7,920
L. W. Burns	Asst. Prof.	9	7,008	7,920
Roberta Brokaw	Asst. Prof.	9	6,516	7,356



College of Law

<u>Name</u>	<u>Rank</u>	<u>Months</u>	<u>Present Salary</u>	<u>Proposed Salary</u>
M. H. Merrill	Res. Prof.	9	21,000	22,000
R. D. Vliet	D. R. B. Prof.	9	16,200	18,000
G. B. Fraser	D. R. B. Prof.	9	16,200	18,000
E. D. Phelps	Professor	9	15,600	17,200
Frank Elkouri	Professor	9	14,700	16,400
J. F. Rarick	Professor	9	14,700	16,400
L. H. Whinery	Professor	9	14,100	15,624
David Swank	Assoc. Prof.	12	13,800	15,252
D. G. Gibbens	Assoc. Prof.	9	11,700	12,552
R. E. L. Richardson	Asst. Prof.	12	\$13,500	\$14,520
J. O. Dyrud	Asst. Prof.			
	Law Librarian	12	13,200	14,172

College of Pharmacy

Ralph Bienfang	D. R. B. Prof.	9	12,700	13,500
R. W. Clark	Professor	9	10,000	10,000
Blanche Sommers	Professor	9	9,612	10,596
J. B. Bruce	Professor	9	9,612	10,596
V. J. Brown	Assoc. Prof.	9	8,724	9,612
J. A. Rieger	Professor	9	8,112	8,316
J. R. Grunder	Asst. Prof.	9	9,384	9,612

Libraries

M. R. Spence	Assoc. Dir.	12	12,900	14,520
M. E. Potts	Chief Cataloger	12	8,520	9,612
Opal Carr	Librarian PIII	12	8,112	8,940
C. B. Cathey	Librarian PIII	12	7,728	8,520
Lucy Finnerty	Librarian PIII	12	6,840	7,536
T. H. Milby	Librarian PIII	12	8,520	9,384
M. M. Bergin	Librarian PII	12	7,176	7,728
Louise Gibson	Librarian PII	12	6,516	7,356
V. R. L. Bailey	Librarian PII	12	6,360	7,008
L. A. Rucker	Librarian PII	12	6,360	7,008
N. K. Peters	Librarian PII	12	6,060	6,516
M. G. Fellows	Librarian PII	12	6,060	6,672
R. B. Kauskay	Librarian PII	12	6,060	6,516
L. L. Smith	Librarian PII	12	6,060	6,672
R. J. Domell	Librarian PII	12	6,060	6,672
B. H. Shanklin	Librarian PII	12	5,772	6,060
N. C. Gamble	Librarian PII	12	5,628	6,060
M. E. Morris	Librarian PII	9	5,496	5,960
J. D. Haley	Librarian PII	12	5,496	6,060
G. O. Talkington	Librarian PI	12	4,512	4,740

Aviation

<u>Name</u>	<u>Rank</u>	<u>Months</u>	<u>Present Salary</u>	<u>Proposed Salary</u>
Paul E. Clark	Asst. Professor	9	\$ 7,008	\$ 7,356
Newton J. Cole	Flight Instructor	9	6,060	6,516

July 14, 1966

8646

have been budgeted for faculty salaries, for an increase in the stipends of graduate assistants, and, in comparatively minor amounts, for instructional supplies. No adjustments in administrative salaries were recommended from this source at this time.

He said merit increases are being recommended for a majority of the faculty, but special attention has been given to merit in the advanced ranks, where the University has been most poorly competitive in regional and national comparisons.

The new salaries for those on twelve-month contract are to be effective as of July 1, 1966, and for those on nine-month contract as of September 1, 1966. He called attention to the fact that the salary figures shown are salary rates.

President Cross recommended that the Regents approve the salary adjustments as shown.

Approved on motion by Regent Little.

President Cross reported the faculty of the School of Geology has unanimously voted to change the name of the School of Geology to the School of Geology and Geophysics. This requested change in title is a result of the increasing emphasis of geophysics in the overall program of the School. Although there has been a degree program in geophysics within the School of Geology for a number of years, only recently has an effort been made to expand this program through the addition of more faculty and facilities.

This change in name will require no corresponding addition of degree programs because the School of Geology already offers Bachelor's, Master's, and Ph.D. programs in the field of geophysics. Also, there will be no changes in title for faculty members since it is anticipated the faculty of the School will be composed of both geologists and geophysicists.

President Cross recommended the name of the School of Geology be changed to School of Geology and Geophysics, the change to be effective immediately.

Approved on motion by Regent Davies.

As requested by the University Regents at the last meeting, a clarification was requested from the Oklahoma State Regents for Higher Education on their action of April 25, 1966, concerning the admission of students to the College of Law. The following statement has been received from Chancellor E. T. Dunlap:

July 14, 1966

8647

"The Regents' action on this subject at their meeting on April 25, 1966 did not set aside that part of the Admissions Policy Statement of February 22, 1965 providing that students already enrolled at that time who had declared their objective to be the study of law had the privilege of being admitted to Law School under the old policy, three years of college work, or they may choose to meet the new standard--that of attaining a Bachelor's Degree before entering the Law School.

"The requirement that all students applying for admission to the Law School must have taken the Law School admission test does apply, however, to all, whether being admitted under the old or the new standard."

This clarifying statement was presented for the information of the University Regents and no further action was required.

#### ADMINISTRATIVE AND PROFESSIONAL

##### LEAVES OF ABSENCE:

Thurman J. White, Dean, Extension Division and College of Continuing Education, leave of absence with pay, September 26 to November 8, 1966.

Louise Jordan, Geologist, Oklahoma Geological Survey, sick leave of absence with full pay, May 1 to September 1, 1966.

William E. Ham, Associate Director, Oklahoma Geological Survey, leave of absence without pay, September 12, 1966 to June 10, 1967.

John W. Dunn, Extension Specialist II, Business and Industrial Services, leave of absence without pay extended from July 1, 1966 to July 1, 1967.

##### APPOINTMENTS:

Anthony C. Bellotti, reappointed Extension Specialist II, El Salvador Peace Corps Project, \$700 per month, June 1 to September 15, 1966.

Albert Wayne Bodkin, Assistant Dean of Men for Housing, \$8,112 for 12 months, July 5, 1966.

Susan Lee Hardwick, Extension Specialist II, El Salvador Peace Corps Project, \$700 per month, June 20 to November 1, 1966.

Jimmy Neal Harper, Extension Specialist II, School and Community Services, \$8,500 for 12 months, July 1, 1966.

Edith G. King, reappointed Practicum Supervisor, Guidance Service, \$600 for 12 months, part time, July 1, 1966.

July 14, 1966

8648

Grant Edward MacLaren, Extension Specialist II, Puerto Rico Peace Corps Project, \$700 per month, July 5 to November 1, 1966.

Phyllis Elaine MacLaren, Extension Specialist II, Puerto Rico Peace Corps Project, \$700 per month, July 5 to November 1, 1966.

Jack D. Middleton, Extension Specialist II, Southwest Center for Human Relations Studies, \$9,156 for 12 months, July 1, 1966.

Robert L. Miller, reappointed Extension Specialist II, Indian Education Project, Southwest Center for Human Relations Studies, \$8,520 for 12 months, July 1, 1966 to July 1, 1967.

W. Haskell Olivo, Jr., Assistant to the Architectural Committee, School of Architecture, \$8,316 for 12 months, July 1, 1966.

James H. Petree, Extension Specialist II, School and Community Services, \$9,852 for 12 months, July 1, 1966.

G. David Price, Assistant Director of Sports Information, Athletic Department, \$8,000 for 12 months, July 1, 1966.

Jay Steve Wahl, Auditor III, Auditing Office, \$7,176 for 12 months, July 1, 1966.

John Willoughby Whitten, Coordinator of International Exchange, Office of the Deans of Students, \$7,356 for 12 months, August 22, 1966.

Susan J. Yagodka, Extension Specialist II, El Salvador Peace Corps Project, \$350 per month, 1/2 time, June 20 to September 27, 1966.

**CHANGES:**

Nancy Ruth Askew, title changed from Extension Specialist I to Extension Specialist II, School and Community Services, salary increased from \$3,996 to \$5,100 for 12 months, July 1, 1966.

Margaret Cole Beaird, title changed from Financial Aids Counselor to General Counselor, Financial Aids, salary increased from \$5,496 to \$6,060 for 12 months, July 1, 1966.

Orel W. Busby, Assistant Internal Auditor, salary increased from \$7,536 to \$8,520 for 12 months, changed from Professional to Administrative Staff, June 1, 1966.

Mary Ann Griffin, changed from Clerk-Stenographer II, School and Community Services, to Pre-School Teacher, OEO Kickapoo-North Canadian Project, salary increased from \$255 to \$450.42 per month, June 1, 1966 to July 1, 1967.

July 14, 1966

8649

Virginia Riddle Hall, title changed from Extension Specialist I to Extension Specialist II, School and Community Services, salary increased from \$3,996 to \$5,100 for 12 months, July 1, 1966.

Marilyn Suzann Keely, Extension Specialist II, School and Community Services, salary increased from \$7,500 to \$8,316 for 12 months, July 1, 1966.

Hector Manuel Pena, title changed from Spanish Teacher to Extension Specialist II, Puerto Rico Peace Corps Project, salary changed from special payment to \$700 per month, July 1 to November 1, 1966.

Loyal J. Roach, III, Extension Specialist II, transferred from Civil Defense Program to School and Community Services, salary increased from \$8,112 to \$9,075 for 12 months, June 1, 1966.

Ronnie D. Stewart, Business and Advertising Manager, Oklahoma Daily, salary increased from \$6,060 to \$7,200 for 12 months, July 1, 1966.

**RESIGNATIONS:**

Thomas Alden Bond, Geologist, Oklahoma Geological Survey, July 1, 1966.

Terance O. Bott, Extension Specialist II, Puerto Rico Peace Corps Project, June 14, 1966.

Ilse M. Davis, Practicum Supervisor, Psychological Clinic, September 1, 1966.

George A. Postlethwait, Extension Specialist II, Puerto Rico Peace Corps Project, May 1, 1966.

Gordon Carl Stauffer, Assistant Basketball Coach, July 1, 1966.

Approved on motion by Regent Calvert.

President Cross reported the death of Mr. R. L. Brown, Administrative Assistant in the Physical Plant, on July 6, 1966. Mr. Brown had been employed by the University since 1938.

The Regents requested that an appropriate letter be sent to Mr. Brown's survivors from the President of the Board.

The Regents agreed that when a death occurs among the University staff an appropriate letter be sent to the survivors by the President of the Regents.

President Cross reported it is necessary to revise the Student Regulations for the academic year 1966-67. To comply with the Administrative Procedures Act of 1963 the Regents must set a date for a hearing on the rules prior to their adoption. At least 20 days' notice must be given.

President Cross recommended that August 10, 1966 be set for a date for hearing objections to the revised Student Regulations and that appropriate notice be given 20 days before that date, as provided by law.

Approved on motion by Regent Little.

President Cross recommended that the activity fee distribution for the summer term of 1966 be approved on the basis of 4,397 full-time-equivalent students as follows:

Student Union Debt Service	\$6.94
Student Health Service	3.75
Oklahoma Daily	.63

Approved on motion by Regent Sparks.

President Cross reported the matching funds required from the University for the National Defense Student Loan Program for the fall semester, 1966, is approximately \$21,000. This amount will be available in the Sallie B. Clark Loan Fund and in the Murray Case Sells Foundation on September 1, 1966.

President Cross recommended that the Regents authorize transferring \$7,400 from the Murray Case Sells Foundation and \$13,600 from the Sallie B. Clark Loan Fund as the 1/9 matching portion of the total allocation from the government for the National Defense Student Loan Program for the fall semester, 1966.

Approved on motion by Regent Little.

President Cross said that Dr. James G. Harlow, Dean of the College of Education, has recommended that the kindergarten enrollment fee at the University School be increased from \$50.00 per semester to \$62.50 per semester for the 1966-67 school year to provide for increased costs.

President Cross recommended that the kindergarten enrollment fee at the University School be increased from \$50.00 per semester to \$62.50 per semester for the 1966-67 school year.

Approved on motion by Regent Sparks.

July 14, 1966

8651

The Peace Corps has required that certain psychological assessments and consulting work be performed for Peace Corps projects. The El Salvador Community Development, the El Salvador 4-H projects, and the Togo project included an item which was approved by the Peace Corps for a total payment of \$13,200 for professional psychological assessment and consulting work. The total cost is to be paid by the Peace Corps.

In 1964 some members of the Department of Psychology filed an application for outside employment to start an outside firm to be known as Psychological Consultants Division with offices to be in the City National Bank Building in Norman. The application for outside employment was approved and the firm was subsequently organized.

The project director for Peace Corps programs has requested that the Psychological Consultants Division be hired on a contractual basis to perform the psychological assessments and the consulting work required for Peace Corps trainees. The total amount of the contract will not exceed the \$13,200 approved by the Peace Corps as the amount to be paid from Peace Corps funds.

President Cross recommended that the Regents authorize negotiating a formal contract with Psychological Consultants Division for a total payment of \$13,200 to be made for the psychological assessments and consulting work in connection with the Peace Corps projects outlined above.

Approved on motion by Regent Little.

President Cross stated that for the several reasons which were presented in his letter of June 21 to Dr. Johnson, with copies to all of the Regents, he is convinced that it is in the best long-range interest of the University for us to return to the original plan of constructing a Physical Science Center for the Departments of Chemistry, Physics, and Mathematics.

President Cross recommended that the first phase of the Physical Science Center be planned for the Departments of Chemistry and Mathematics with funds already earmarked from the recent bond issue and which are to be supplemented by funds from the Federal Government under the Academic Facilities Act.

Approved on motion by Regent Calvert.

President Cross presented the following tabulation of bids received on the laboratory renovation of the Pharmacy Building:



	<u>Base Bid</u>	<u>Alt. #1</u>	<u>Alt. #2</u>
Barbour and Short, Inc.	\$85,241	\$1,579	\$ 959
Buckner and Moore, Inc.	87,507	1,959	1,168
Ray Padgett Construction	87,793	1,834	1,076
Abercrombie Const. Co.	88,900	2,000	1,200
Constructors Company, Inc.	91,270	1,950	1,260
Greater Oklahoma Corp.	92,458	1,655	966

Alternate #1: Additional Science Lab equipment for Room 209.

Alternate #2: Additional Science Lab equipment for Room 210.

The United States Public Health Service has approved a \$40,000 award as matching funds for the project. A supplemental application has been submitted to the Public Health Service for an additional \$5,000 which, if approved, would provide funds for approximately one-half the cost. The Regents have previously approved allocations from the Section 13 and New College Funds as the University's portion of the cost of the project.

The Public Health Service requires that they also approve the awarding of the bids. The request for approval has been submitted to Washington.

President Cross recommended that the Regents award the contract, contingent to Public Health Service approval, to the low bidder, Barbour and Short, Inc., on the basis of the base bid plus alternates #1 and #2, for a total contract cost of \$87,779.

Approved on motion by Regent Sparks.

President Cross reported that when the Manhattan Construction Company was digging the footings for the construction of the new Towers housing facilities, the contractor's soil investigation tests indicated unusual variations from the previous test. The contractor and architect agreed that additional tests should be conducted.

Mr. R. E. Means was hired as consulting engineer and as an authority on soil investigations of this nature. Mr. Means suggested that since the results of the two tests varied, it would be wise to change the design of the piers slightly. He recommended that the allowable bearing capacity be changed from 40,000 pounds per square foot to 30,000 pounds per square foot. This could be accomplished by enlarging the bells for the piers.

The contractor has estimated that the cost for enlarging the bells will total \$7,296. University officials, the architects, and the contractor have all recommended that the change be made.

July 14, 1966

8653

President Cross recommended that the Regents authorize the President of the Board to sign Change Order No. 2 to increase the cost of the total construction contract by \$7,296 as outlined above.

Approved on motion by Regent Little.

President Cross stated that because of the nature of the services to be performed and because of the limited number of patrons to use the facility, the University has investigated the possibility of leasing the coffee shop for the new Airport Operations Building to food service contractors. As a result of the circulation of invitations to bid on furnishing the services, Mr. and Mrs. Felix Ward, Jr., have proposed a payment of 7% of the gross receipts as a University commission for the contract. Mr. and Mrs. Ward now have the contract for furnishing food service for the local bowling alley and it has been reported that the service is very satisfactory. No other bids were submitted.

President Cross recommended that the Regents authorize signing a two-year contract with Mr. and Mrs. Felix Ward, Jr. for furnishing the food services in connection with the operation of the coffee shop and restaurant at Max Westheimer Field.

Approved on motion by Regent Calvert.

As a result of the increase in State cigarette taxes, the Regents approved an amendment to the vending machine contract at the August, 1965, meeting. The amendment provided for an increase in cigarette prices for vending machines on the campus to 35¢ per pack for king and filter cigarettes. The amendment also increased the commission to be paid to the University to 4.8¢ per pack for the remainder of the calendar year. The Oklahoma Vending Company was the contractor at the time.

Bids were received for exclusive rights to furnish cigarette vending machines on the campus for the calendar year 1966. The Oklahoma Vending Company was again the successful bidder, but the commission to the University was increased to 5.5¢ per pack.

On March 20, 1966, Phillip Morris, P. Lorrillard, Brown and Williamson, Ligget-Myers, and the American Tobacco Company all raised prices 4¢ per carton to distributors. The R. J. Reynolds Company raised prices 4¢ per carton on May 6, 1966.

As a result of the increase in prices to distributors, the Oklahoma Vending Company has requested that the commission paid to the University be reduced from 5.5¢ per pack to 5.1¢ per pack. The result is that the increased cost to the distributor would be handled as a reduction in the commission paid to the University. The company has also requested

that the contract be amended effective with the date in increase in cigarette prices to the distributor. This would result in a commission refund of \$91.28 for cigarettes sold between the period March 20 and May 6 of the brands included in the March 20 increase.

Paragraph 5 of the contract provides that established prices may be changed for products sold through vending machines upon written request by the vendor if the University agrees in writing to the change. To change the price from the current 30¢ for regular cigarettes and 35¢ per pack for king and filter would require extensive alteration of the vending machines, and would require special handling of cigarettes in providing proper change inside the cellophane packs. The alternate solution of reducing the commission would result in more commission than was included in the 1965 contract and would still be higher than the second best bid received when the 1966 contract was awarded last December.

President Cross recommended that the Regents approve an amendment to the contract with the Oklahoma Vending Company to provide for a commission payment to the University of 5.1¢ per pack effective on the date of approval by the Regents.

Approved on motion by Regent Sparks.

President Cross presented the following tabulation of bids received for furnishing ice cream, sherbet, and frozen desserts for six months and for one year beginning August 21, 1966:

The Borden Company, Oklahoma City		
Net, delivery twice each week	6 months	\$ 6,904.00
	1 year	13,778.00
Fairmont Foods Company, Oklahoma City		
Net, delivery twice each week	6 months	7,193.80
	1 year	13,971.00
Townley's Dairy Company, Oklahoma City		
Net, delivery as required	6 months	8,401.00
	1 year	No Bid

A detailed tabulation of the bids was included in the agenda.

The bids received on a twelve-month basis are slightly lower than the unit bids on a six-month basis. It appears that there is little possibility that prices will decline during the next year and the annual bid is more attractive to the University. It is also more convenient for the food service units to deal with one company for the entire year.

President Cross recommended that the Regents award the contract to The Borden Company on an annual basis at a total estimated cost of \$13,778.00.

Approved on motion by Regent Little.

The two bids received on July 7 for air conditioning Washington House were presented in the agenda. President Cross reported, however, that some potential bidders did not see the advertisement and it is the feeling of the Athletic Department and others concerned that by revising the specifications and readvertising, lower bids will be received. President Cross recommended the Regents reject both bids for air conditioning Washington House and that another call for bids be advertised for July 26. Approved on motion by Regent Sparks.

President Cross recommended also that, since there will not be a Regents' meeting in August and since the Athletic Department is anxious to complete the project this summer, that a telephone vote of the Regents be authorized on the bids to be received on July 26 for air conditioning Washington House, and that the University be authorized to proceed with the project upon unanimous approval by the Regents.

Approved on motion by Regent Little.

President Cross reported that bids on replacement furniture for Athletic Department dormitories were sent to 19 firms. The following is a tabulation of the bids received:

	<u>A.F. Williams Furniture Co.</u>	<u>Bruno's Mat. &amp; Furn. Co.</u>	<u>R.O. Rose Inc.</u>	<u>Brinkley Furniture</u>	<u>Rockford Furn. Assoc.</u>
68 ea. chairs #MR 835	\$8,109.00	\$8,908.00	\$9,588.00	\$8,360.00	\$8,920.24
2 ea. sofas #MR 8070-97	347.48	430.00	450.00	358.28	404.22
2 ea. sofas #MR 8070-82	310.46	352.00	372.00	320.12	360.52
6 ea. chairs, lounge, #MR 611	511.98	600.00	660.00	527.88	608.94
2 ea. commodes #6125-10	N.B.	164.00	190.00	182.32	N.B.
1 ea. table, coffee, #6125-1	N.B.	77.00	87.00	81.62	N.B.

President Cross recommended that the contract be awarded to the low bidders as follows:

July 14, 1966

8656

Items 1 through 4 - A. F. Williams Furniture Company  
Items 5 and 6 - Bruno's Mattress and Furniture Company

Approved on motion by Regent Calvert.

President Cross said the Athletic Department has requested that carpeting be installed in Washington House in both the living areas and the corridors. The installation is to be a part of the redecoration and air conditioning of Washington House. The carpet is to be installed after the air conditioning has been completed.

The Athletic Department specifically recommended that a 3/4 inch cut pile carpet be installed in the living area. The corridors are to be covered with a standard type carpet.

Invitations to bid on the installation were circulated to 23 firms. The following bids were received:

Bentley's, Oklahoma City Net, delivery as necessary Bidding Callaway Mills carpet as alternate	\$18,449.00
Allied Carpets and Drapes, Tulsa Net, 4 weeks delivery Bidding Monarch "visionette" as specified	21,279.68
Carpet City, Oklahoma City Net, delivery per mill promise Bidding Monarch "Visionette" as specified	21,360.00
Bruno's Mattress and Furniture Co., Oklahoma City Net, delivery July 10, 1966 Bidding Monarch "Visionette" as specified	21,583.00
A. F. Williams Furniture Co., Oklahoma City Net, delivery as required Bidding Mohawk carpet as alternate	23,864.57

The carpet bid as an alternate by Bentley's appears to meet the specifications as outlined in the invitation to bid. As a result, the Athletic Department has recommended that the alternate carpet bid by Bentley's be accepted.

President Cross recommended that the Regents award the contract to Bentley's, Oklahoma City, at a cost of \$18,449.00.

Approved on motion by Regent Davies.

July 14, 1966

8657

The following resolution recommended by the Board of Directors of the Alumni Development Fund and approved by the Executive Board of the Association, to provide for increasing the number of alumni members of the Board of Directors of the Alumni Development Fund from four to eight, making, with the four faculty members, a total membership of twelve:

**RESOLUTION**

**RESOLVED**, that the Board of Directors of the Alumni Development Fund of the University of Oklahoma, during a regular meeting of the Board held on Friday, April 1, 1966, at which a quorum was present and voting, does hereby submit to the Executive Board of the University of Oklahoma Association a proposal to expand the size of the ADF Board of Directors by four (4) alumni members, thereby increasing the total size of the ADF Board of Directors to twelve (12) members, comprised of four (4) faculty members of the University of Oklahoma and eight (8) alumni members. It is the intent of the ADF Board of Directors that this action would permit broader and more active participation on the part of alumni representatives who devote valuable time and energy to the cause of furthering the goals of the ADF program.

**BE IT FURTHER RESOLVED** that, if this proposal is approved by the Executive Board of the University of Oklahoma Association, it be forwarded to the Board of Regents of the University of Oklahoma for consideration and approval.

**BE IT FURTHER RESOLVED** that, if this proposal is approved by both the Executive Board of the University of Oklahoma Association and the Board of Regents, four new alumni representatives be appointed to the ADF Board of Directors by the President of the University of Oklahoma Association for staggered terms of one, two, three, and four years, beginning with the 1966 Fund year.

Respectfully submitted on this 3rd day of June, 1966.

/s/ Ronald K. Green

Ronald K. Green  
Director and Secretary  
Alumni Development Fund

In accordance with the terms of the Resolution President Cross presented it to the University Regents for their action.

Approved on motion by Regent Sparks.

July 14, 1966

8658

Following is a Resolution submitted by the Executive Board of the University of Oklahoma Alumni Association to the University Regents, requesting that non-residents of the State of Oklahoma who are children of alumni of the University be considered for admission to the University under the same academic standards that apply to residents of the State:

RESOLUTION

WHEREAS, the ever-growing demands for a college education at the university level clearly indicate a trend toward more rigid admission requirements at the University of Oklahoma, and

WHEREAS, this trend indicates that admission standards for out-of-state students will be higher than for residents of Oklahoma, both in consideration of present admission requirements and anticipated changes in these standards, and

WHEREAS, alumni of the University of Oklahoma who reside in states other than Oklahoma and in foreign countries have demonstrated a continuing interest in the progress and advancement of the University of Oklahoma, evidenced by their loyal support and financial assistance provided to the University as well as maintaining family, professional, and business relationships within the State of Oklahoma, it is hereby

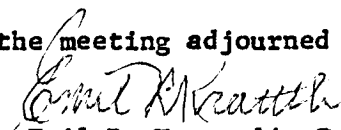
RESOLVED, that the Executive Board of the University of Oklahoma (Alumni) Association, at a regularly scheduled meeting of the Executive Board on Friday, June 3, 1966, at which a quorum was present and voting, does hereby propose that, beginning with the Summer Term, 1967, non-residents of the State of Oklahoma who apply for admission to the University of Oklahoma and who are children of alumni of the University be considered for admission by the same academic standards as residents of the State of Oklahoma, under present admission standards and under any standards which may be revised in the future.

THIS RESOLUTION is hereby submitted to the Board of Regents of the University of Oklahoma for consideration by that Board at its earliest possible convenience.

In accordance with the terms of the Resolution, President Cross presented it to the University Regents for their action.

Approved on motion by Regent Calvert.

There being no further business the meeting adjourned at 11:40 a.m.

  
Emil R. Kraettli, Secretary

July 14, 1966

8659

Others present at the meeting were as follows:

Blaine Smith, Office of Public Information (operating the tape recorder)  
Elizabeth Stubler, Office of Public Information  
Sandra Turner, The Norman Transcript  
Bob Ruggles, Oklahoma City Times  
Keith Weller, Oklahoma Daily  
Dean Snyder, Oklahoma Daily