

REGENTS OF THE UNIVERSITY OF OKLAHOMA
WEDNESDAY, JANUARY 12, 1949
10:00 a.m.

The Regents of the University met in regular session in the office of the President of the University, Norman, on Wednesday, January 12, 1949, at 10:00 a.m. Present were: Don Emery, Vice President, presiding; McBride, Benedum, White. Absent: Deacon, President; Noble, Shepler.

The secretary was directed to include in the minutes of the meeting held on December 8, 1948, a copy of the Resolution concerning the allocation of funds for the biennium, 1949-1951 which was unanimously adopted at the meeting. (The acting secretary was not present at the time the resolution was proposed and adopted and for that reason, it does not appear in the minutes as written.)

With the correction as above directed, the minutes of the meeting on December 8, 1948, were approved.

President Cross reported the following deaths on the faculty:

Miss Ida Z. Kirk, Professor Emeritus in the School of Drama, on December 10, 1948. Miss Kirk came to the University in 1920 and served continuously until her retirement from active service and her appointment as Professor Emeritus in 1945.

Paul S. Carpenter, Dean of the College of Fine Arts, on Tuesday, January 4, 1949. Dean Carpenter came to the University in February, 1914, as Instructor in Violin. He was appointed Dean of the College of Fine Arts September 1, 1947.

Regent Benedum moved, and it was unanimously voted, that President Cross write appropriate letters of regrets and sympathy to the surviving members of the families of Miss Kirk and Dean Carpenter on behalf of the Regents.

President Cross submitted the following resolution:

RESOLUTION

BE IT RESOLVED by the Board of Regents of the University of Oklahoma, that the President of the University be authorized to execute, on behalf of the Regents of the University of Oklahoma, a priority bid to the War Assets Administration for purchase of 13.61 acres of land at the Hillcrest War Housing Project near the Southeast Corner of the University Campus described as follows:

Tract No. 1

A tract of land in the SW $\frac{1}{4}$ of NW $\frac{1}{4}$ of Section 5-T8N-R2W that is described as follows: BEGINNING at a point 25 feet South and 497 feet East of the NW corner of said SW $\frac{1}{4}$ of NW $\frac{1}{4}$ of Section 5-T8N-R2W; Thence South 0° 01'

2962

January 12, 1949

West 305 feet; Thence North 90° 00' West 177 feet; Thence South 0° 01' West 330 feet; Thence North 90° 00' East 642.5 feet; Thence North 0° 01' East 635 feet; Thence North 90° 00' West 465.5 feet to the point of beginning and containing 8.13 acres more or less.

Tract No. 2

A tract of land in the SW $\frac{1}{4}$ of NW $\frac{1}{4}$ of Section 5-T8N-R2W that is described as follows: BEGINNING at a point 25 feet South 1012.5 feet East of NW corner of said SW $\frac{1}{4}$ of NW $\frac{1}{4}$ of Section 5-T8N-R2W; Thence South 0° 01' west 635 feet; Thence North 90° 00' East 307.5 feet; Thence North 0° 01' East 635 feet; Thence North 90° 00' West 307.5 feet to the point of beginning and containing 4.48 acres more or less.

and to offer \$8,700.00 for the land less all public benefit allowances to which the University is entitled, and to do all other acts necessary to consummate the transaction.

There being four members present, same being a quorum, all members including the Chair voted in favor of adoption of the resolution, and the Chairman declared the resolution adopted.

President Cross called attention to previous discussions concerning the proposal to enter into a contract for lead recovery on the North and South campuses and submitted the following statement from Mr. Cate:

"Mr. Walter Kraft reports as follows with respect to the proposed contract for recovery of lead on the firing ranges on the North and South Campuses:

"(1) That the soil on the North Campus range is a type of gumbo soil and in damp and wet weather it is sticky and very difficult or impossible to screen; and in dry weather the soil becomes very hard and is difficult to work with.

"(2) That the soil on the South Campus range is very sandy and fine and could be screened readily; but that the screening operation would discharge dirt and dust into the atmosphere which during periods of prevailing South winds would carry the dust North into the pre-fabricated housing and dormitory area South of Lindsey Street.

"(3) That if the Board of Regents desires to enter into a lead recovery contract, the contract include the following provisions for protection of the interests of the University: a) That the excavation in no case exceed 8 inches and that the contractor be required to replace the soil after it has been screened so as to leave the land in level and good condition; b) That the contractor furnish bond to protect the University against any possible damage to University property or damage claims brought by residents damaged by dust; and c) That the contractor guarantee to pay the University a substantial minimum amount regardless of the amount of lead recovered.

"Since the type of soil at the North Campus is not suitable for lead recovery operations, and since an effort was made to recover lead from the South Campus firing range by a private contractor before the Navy turned the South Base over to the University and the efforts proved unsuccessful, and since there is a likelihood of a large number

January 12, 1949

of complaints from residents in the Prefab area and Wilson Center area over dust from the screening process if attempted on the South Campus, it is my recommendation that no such contract be entered into."

President Cross recommended that no such contract be entered into. On motion by Regent Benedum it was unanimously voted to approve the President's recommendation.

President Cross requested authorization to purchase 7000 reams of hammermill mimeograph paper 8 1/2 x 11 and 1000 8 1/2 x 14 mimeograph paper at a total estimated price of \$6,860.00. Since this purchase involved an expenditure of over \$5,000, approval by the Board is required in accordance with a resolution adopted some time ago.

Approved.

President Cross called attention to the letter from Dean Snyder, a copy of which was included in the agenda.

On motion by Regent McBride it was unanimously voted to make this letter a part of the minutes, and that action thereon be deferred until a later date.

"November 29, 1948

"President George L. Cross
The University of Oklahoma

"Dear President Cross:

"This year the State of Oklahoma and its University took a great forward step in the direction of human rights and justice when they admitted a negro to the Graduate College of the University. This might have placed Oklahoma in a position of national leadership were it not for two things: the admittance was accomplished under coercion from the federal courts, and it was carried out on a segregated basis. It is too late now to rectify the first situation, but the second can still be given careful reconsideration.

The segregation of Mr. McLaurin has caused widespread unfavorable comment around the nation. In my travels I find the State, the University, and the Graduate College the target of much criticism for this undemocratic solution of the problem. I have talked personally with many faculty members, and I find a very large majority of them in favor of removing the segregation restrictions, if it can legally be done. As the dean of the Graduate College, I want to recommend strongly that everything possible be done to abolish the segregation within the University.

The University Board of Regents is to be commended for the celerity with which it voted to admit Mr. McLaurin, once the legal obstacles were cleared away. I would be gratified if now the Regents would turn their attention to the intra-mural segregation problem. If there are still legal barriers in the way, a strong recommendation from the Regents could do much to facilitate the removal of these barriers. I should like to

2964

January 12, 1949

initiate such a recommendation from the Graduate College, which is the college most closely concerned. If you feel it within the bounds of propriety, I would be happy to have you communicate this recommendation to the Board of Regents.

I have always held great satisfaction in the admirable attitude of the University administration towards the problem, and I look forward to the ultimate democratic solution with sincere hope and faith.

Very sincerely yours,
/s/ Laurence H. Snyder
Dean of the Graduate College."

The following reports and recommendations were submitted by President Cross for action:

LEAVES OF ABSENCE:

Professor Leonard B. Beach of the Department of English, be granted a leave of absence without pay in order to accept a Rockefeller grant for research, January 16 to June 1, 1949.

Robert M. Lee, Control Tower Operator, be given a leave of absence without pay from December 20, 1948 to March 1, 1949.

Approved.

SUMMER SCHOOL, 1949:

Ethelyn L. Flagg, Instructor in Library Science, \$300 per month for June and July, 1949

Mrs. Irma Tomberlin, Instructor in Library Science, \$300 per month for June and July, 1949

Leon F. Lee, Temporary Chairman, Department of Economics during the summer session of 1949.

Approved.

FACULTY APPOINTMENTS:

Hugh M. Galbraith, Special Lecturer in Psychology, \$50 per month for 4½ months, January 16, 1949

Leo M. Hurley, reappoint as Teaching Assistant in Mathematics and Astronomy at \$1012.50 for 9 months (1/2 time basis) effective January 16, 1949 to June 1, 1949

Charles J. Mauck, Instructor in Mechanical Engineering, \$3,000 for 9 months service, effective January 16, 1949

Mrs. Bess Moore, Special Instructor in Field Work, Social Work, \$450 for 9 months service, February 1 to May 31, 1949

January 12, 1949

Walfried J. Reinthal, Special Assistant Professor of Entomology, Zoological Sciences Department, \$1750 for 4½ months service, January 16, 1949

Elizabeth Trent Rogers, reappoint as Special Instructor in Zoological Sciences at \$2800 for 9 months services, January 16, 1949 through May 31, 1949

Vernon A. Snowbarger, reappoint Special Instructor in the Department of Sociology at \$100 per month for four months, effective January 16, 1949

Approved.

FACULTY TITLE AND SALARY CHANGES:

Walter James Ewbank, Assistant Professor of Mechanical Engineering, increase salary from \$3800 to \$4200 for 9 months service, January 16, 1949

Earl V. Greer, Mathematics and Astronomy, change from 3/4 time at \$2025 for 9 months to 1/2 time at \$1350 for 9 months, January 16, 1949

Lowell D. Gregory, Mathematics and Astronomy, change from 3/4 time at \$1,650 for 9 months to full time at \$2200 for 9 months, effective January 16, 1949

John Gordon King, Accounting Department, \$1350 for 1/2 time to \$2700 for full time, effective January 16, 1949

Maurice L. Lawson, Mathematics and Astronomy, change from full time at \$3,000 for 9 months to 2/3 time at \$2,000 for 9 months, January 16, 1949

Richard L. O'Shields, appointment as Paper Grader in Department of Mathematics will be discontinued on January 16, 1949 and his salary will be returned to \$60 per month as Teaching Assistant in the Department of Mechanics and Engineering Metallurgy

Harold A. Palmer, Mathematics and Astronomy, change from full time at \$2500 for 9 months to \$1250 for 9 months at 1/2 time, January 16, 1949

William B. Ragan, Professor of Education, \$4500 to \$5,000 for 9 months, January 16, 1949

Elroy Leon Rice, Assistant Professor of Plant Sciences, \$3500 to \$3800 for 9 months service, January 16, 1949

Warren W. Walkley, change from Graduate Assistant to Instructor in Electrical Engineering and increase salary from \$810 to \$2700 for 9 months full time, January 16, 1949

Maxine Pierce Willis, Mathematics and Astronomy, change from 1/2 time at \$1100 for 9 months to 3/4 time at \$1650 for 9 months, January 16, 1949

Elmer Staten Wynne, Assistant Professor of Plant Sciences, \$3800 to \$4,000 for 9 months service, January 16, 1949.

Approved.

2966
January 12, 1949

FACULTY RESIGNATIONS:

Jacqueline G. Harris, Teaching Assistant in Chemistry, December 23, 1948

John B. Lennes, Instructor in Department of Mathematics, January 16, 1949

William A. Sellon, Instructor in Industrial Education, December 17, 1948

Accepted.

APPOINTMENTS IN THE DEPARTMENT OF PUBLIC HEALTH:

Dr. Laurence T. Rogers, who was appointed Professor of Health Education October 15, 1946, be given the rank and title of Professor in the Department of Public Health in addition to his appointment as Professor of Health Education in the College of Education, this change to become effective January 1, 1949

Dr. James O. Hood, Director of the University Health Service, be appointed in addition as a Special Lecturer in the Department of Public Health, January 1, 1949

Approved.

President Cross presented the recommendation of the University Senate that the Department of Aeronautics be changed to the Department of Aviation, effective January 1, 1949.

Approved.

MUSEUM:

Recommended that Dr. Clifford A. Merritt, Professor of Geology, be given the honorary appointment of Research Associate in the Division of Geology and Paleontology of the Museum of the University of Oklahoma.

Approved.

GRADUATE ASSISTANTS:

Resignation:

Norman A. Guest, Graduate Assistant in Physics, resigned January 1, 1949

Appointments:

Cecillie Mary Blanche Blockley, Graduate Assistant, Zoological Sciences, \$90 per month for 4½ months, January 16, 1949 to June 1, 1949 (reappointment)

Reginald C. Bowers, Student Assistant at \$90 per month December 20, 1948 to January 1, 1949. Graduate Assistant in Industrial Education January 16 through May 31, 1949

January 12, 1949

Brady B. Gilleland, Graduate Assistant in English, \$90 per month for 4½ months January 16 to May 31, 1949 (Reappointment)

Don Lee McIntire, Graduate Assistant in Electrical Engineering, \$90 per month, January 16 to June 1, 1949

Robert Taylor Nethken, Graduate Assistant in Electrical Engineering, \$90 per month January 16, 1949 for an indefinite period.

Harold Glen Shaklee, Graduate Assistant in Mathematics, \$810 for 9 months January 16 to June 1, 1949

Approved.

NON-ACADEMIC APPOINTMENTS:

Freda J. Cox, Control Tower Operator, \$216.66 per month, effective December 20, 1948 to February 28, 1949

Margaret Naramore Sullivan, Administrative Secretary, Speech and Hearing Clinic, \$2100 for 12 months service, December 31, 1948

Approved.

NON-ACADEMIC CHANGES:

George Wadsack, change title from Director of Registration to Assistant to the Dean of Admissions ~~and Records~~, salary rate reduced from \$5,100 to \$3,600 for 12 months service, January 1, 1949

J. R. Anderhub, Bindery Assistant, University Press, increase salary from \$2712.00 to \$3,000 for 12 months, January 1, 1949

Henry L. Bowman, Audio-Visual Technician, change from 1/2 time at \$900 for 12 months to full time at \$3,000 for 12 months, February 1, 1949

Glenn Phillip Bradley, Sales Manager, University Press, increase from \$3200 to \$3480 for 12 months, January 1, 1949

Van Endicott, Superintendent of Printing Division, University Press, from \$4800 to \$5200 for 12 months service, January 1, 1949

Mary Stith, Assistant Editor, University Press, increase from \$3,000 to \$3,300 for 12 months, January 1, 1949

William H. Thompson, Oklahoma Biological Survey, increase from \$2,000 to \$2,500 for 1/2 time, January 1, 1949 (An additional \$2,500 to be paid by Game and Fish Department)

Boyce D. Timmons, change title from Recorder and Office Manager to Director of Registration and Office Manager, \$4,100 to \$4,800 for 12 months, January 1, 1949

January 12, 1949

Delora Tinsley, Office Manager, University Press, \$2640 to \$2760 for 12 months, January 1, 1949

Dick G. Underwood, Assistant Art Editor, University Press, \$2600 to \$2880 for 12 months, January 1, 1949

Albert J. Yanda, Architectural Draftsman, Office of University Architect, from 1/2 time at \$87.50 per month to full time at \$200 per month for 12 months service, January 25, 1949

Approved.

NON-ACADEMIC RESIGNATIONS:

Betty Jo Endicott, Charge Ticket Clerk, Book Exchange, November 21, 1948, resigned

Mary Lou Falkenstein, Clerk-typist, University Guidance Service, resigned December 1, 1948

Betty Jane Frensley, General Office Clerk, Office of Dean of College of Business Administration, resigned January 1, 1949

Virginia Garrison, General Office Clerk, Veterans Liaison Office, December 29, 1948

Joseph F. Gordon, Architectural Draftsman, January 1, 1949

Hertha Jeffers, Housekeeper, Home Economics, December 11, 1948

Peter Joyal, Linotype Operator, University Press, December 1, 1948

Paul W. Lane, Tool Room Technician, Industrial Education, December 24, 1948

Leonard Logan III, Clay Processor, Art, November 25, 1948

Sue F. Miller, Senior General Office Clerk, Veterans Liaison Office, resigned December 8, 1948

Emma Katherine Musick, Administrative Secretary, Speech and Hearing Clinic, resigned January 1, 1949

Neal T. Putman, Laboratory Assistant, Art, December 1, 1948

Katherine Wyatt Stine, Receptionist, Alumni Records Office, December 1, 1948

Lawson A. Thomas, Laboratory Assistant, Art, January 1, 1949

Accepted.

Reported that in accordance with the rates established for linotype operators, pressmen, etc. in the University Press at the meeting on December 8, 1948, the annual salary rate will be as shown, to become effective January 1, 1949:

January 12, 1949

M. E. Reynolds, Linotype Operator, annual rate from \$4,264 to \$4,680 for 12 months, effective January 1, 1949

Lawrence W. Snow, Linotype Operator, annual rate from \$4,264 to \$4,680 for 12 months service, January 1, 1949

Charles Frank Horning, Linotype Operator, annual rate from \$4,264 to \$4,680 for 12 months service, January 1, 1949

Melvin Frantz, Bindery Pressman, annual rate from \$4,264 to \$4,680 for 12 months service, January 1, 1949

E. L. Danley, Cylinder Pressman, annual rate from \$4,264 to \$4,680 for 12 months service, January 1, 1949

R. Paul Webb, Cylinder Pressman, annual rate from \$4,264 to \$4,680 for 12 months service, January 1, 1949

Andrew C. Gregory, Cylinder Pressman, annual rate from \$4,264 to \$4,680 for 12 months service, effective January 1, 1949

Clark Long, Job Pressman, annual rate from \$4,264 to \$4,680 for 12 months service, January 1, 1949

Kenneth E. Benson, Floorman, annual rate from \$4,264 to \$4,680 for 12 months service, January 1, 1949

William T. Lester, Floorman, annual rate from \$4,264 to \$4,680 for 12 months service, January 1, 1949

Approved.

PHYSICAL PLANT:

Transfer:

Sam Wilson, transfer from Office of the Director of the Physical Plant to the Receiving and Inventory Department; change title from Storekeeper to Warehouse Manager and increase salary from \$210 to \$235 per month, effective January 1, 1949

RESIGNATIONS:

Ray H. Burns, Student Assistant, Janitor Service, December 1, 1948

Julian C. Champeau, Policeman, January 1, 1949

W. A. McWilliams, Fireman, January 1, 1949

Gene Moore, Fireman, November 1, 1948

Hartzell H. Rhynes, Janitor, December 16, 1948

January 12, 1949

APPOINTMENTS:

Joseph Sidney Atnip, Utility Operator, Power Plant, \$200 per month for 12 months, December 1, 1948

John Earle Circle, Office Engineer, decrease from \$325 to \$300 per month, January 1, 1949. Reappointment

Melvin John Ives, Assistant Heavy Equipment Operator, Power Plant, \$200 per month for 12 months service, December 1, 1948

Ray Albert Youngblood, Fireman, \$75 per month, January 1, 1949

Approved.

HOUSING CHANGE:

Otis Johnson, change from Labor Foreman at \$195 per month to Housing Property Foreman at \$210 per month, January 1, 1949

Approved.

SCHOOL OF MEDICINE AND UNIVERSITY HOSPITALS:

Recommended that Dr. Louis Alvin Turley, Professor Emeritus in Pathology, be given the title of Dean Emeritus, effective July 1, 1949, and that he be paid at the annual stipend of \$1,800.00 in accordance with the resolution for such appointments approved by the Regents on May 5, 1944 (P. 1598).

Approved.

The following communication from Dean Everett included in the agenda was discussed. President Cross recommended approval of this proposal under the conditions specified.

"January 6, 1949

Dr. George L. Cross, President
The University of Oklahoma
Norman, Oklahoma

Dear President Cross:

Recently representatives of the School of Medicine were invited to confer with representatives of the State Board of Health and of the Oklahoma Medical Center relative to transferring this center to the campus of The University of Oklahoma School of Medicine. The Oklahoma Medical Center is a federally financed institution under the jurisdiction of the Oklahoma State Department of Health and the United States Public Health Service. It consists of hospital facilities for the care of contagious venereal diseases. The purpose of the center is to perform such treatment as may be necessary to prevent the spread of these diseases.

January 12, 1949

The reasons advanced in the conferences for recommending the transfer of the Oklahoma Medical Center and its physical facilities, including five buildings and equipment, to the School of Medicine campus are as follows:

1. The center could be managed more economically and efficiently on the campus;
2. It is the desire of the United States Public Health Service to associate these centers with medical schools, as has been done in several instances;
3. The School of Medicine has very limited facilities at present for teaching syphilology;
4. Two of the transferred buildings could be used as wards for convalescent poliomyelitis patients of the Crippled Children's Hospital; (The care of a large number of children with poliomyelitis is a constantly recurring emergency to be expected every summer. Our institution has been fulfilling its humanitarian obligations to care for these children at the expense of major disorganization of teaching activities in the Crippled Children's Hospital from four to six months each year because of the limited number of beds.)
5. Facilities to assist postgraduate training in dermatology and syphilology would become available to the school.
6. One building could be used as a badly needed warehouse.

The State Board of Health has voted to recommend and support this program. After an informal discussion with the President of the University of Oklahoma the suggestion was referred to the Hospital Board of our institution for consideration. At a meeting on January 5, 1949, the board approved unanimously the proposal and advised the Dean of the School of Medicine to recommend to the President and the Board of Regents that the State Regents for Higher Education be petitioned as follows:

- A. That a petition be placed by the State Regents for Higher Education with the authorities of the Veterans Administration Hospital, Oklahoma City, requesting transfer of title to five buildings, connecting corridors, and equipment (as described below) to the Board of Regents of the University of Oklahoma.

The buildings are wood frame structures, 150' 6" long and 25' 4" wide. Ceiling height is 9' 10 1/2". The interior finish consists of Gypsum board walls, both sides floor to ceiling, and ceiling, hardwood floors except toilets and lavatories which are 2 inches of concrete over subfloor. Exterior finish consists of asbestoes shingles, skirt to eave, and composition roof. Full length window screens are provided for all exterior windows, and screen doors are provided for all exterior doors. Equipment in the buildings includes: Sprinkler systems, water and steam lines, gas lines, steam radiators, lavatories, bath tubs, air coolers, and all other equipment now fixed to the buildings.

January 12, 1949

These buildings would be erected on the south half of the Oklahoma City campus to provide additional teaching beds for the University of Oklahoma School of Medicine according to the following plans:

1. That two buildings be used for poliomyelitis patients and be operated and managed entirely by The University of Oklahoma Hospitals; the cost of hospitalization of these patients to be financed in a fashion similar to that in the Crippled Children's Hospital. That beds and other necessary equipment to furnish these buildings be transferred in so far as possible.
 2. That one building be used as a ware house to be shared by The University of Oklahoma Hospitals and the Oklahoma Medical Center for Storage of necessary materials.
 3. That two buildings be used by the Oklahoma Medical Center for treatment of communicable diseases, and be operated and financed entirely by the State Department of Public Health. That if at any time the Oklahoma Medical Center ceases to use these buildings, determination of the future use of the buildings shall automatically revert to The University of Oklahoma School of Medicine and Hospitals.
 4. That contracts may be arranged between the State Department of Public Health and The University of Oklahoma Hospitals for the latter to furnish the Oklahoma Medical Center laundry, food, utilities, and other items deemed necessary, at rates not lower than actual cost.
 5. That the responsibility for the employment and management of personnel and for the treatment of patients in the Oklahoma Medical Center be determined by conference between the parties concerned prior to actual transfer of the buildings.
 6. That the School of Medicine shall have the privilege of arranging an affiliation for teaching both graduates and undergraduates in the Oklahoma Medical Center to be entirely under the control of the faculty of the School of Medicine.
 7. That departments of the School of Medicine may, at their discretion, recommend faculty appointments for qualified members of the professional staff of the Oklahoma Medical Center.
- B. That the State Regents for Higher Education be petitioned to secure emergency funds in the amount of \$25,000.00 to provide for necessary expenses involved in moving and erecting the above described buildings, and preparing them for operation.

I respectfully make the above recommendations for the consideration of the President and the Board of Regents of The University of Oklahoma.

Sincerely yours,
/s/ Mark R. Everett
Dean

January 12, 1949

2973

On motion by Regent McBride it was unanimously voted to approve the recommendation.

7
President Cross reported that Dean Everett wrote that he has received information that the State Regents for Higher Education would appreciate an invitation to visit the School of Medicine and University Hospitals and suggested an invitation be extended through the President and the Regents. Dean Everett stated further he would be happy to have such a meeting either for luncheon or dinner, following which a tour of the institution could be made. President Cross expressed himself as favorable to extending the invitation, whereupon Regent Benedum moved, and it was unanimously voted that President Cross be authorized to extend the invitation to the State Regents to visit the School of Medicine and Hospitals, also that President Cross arrange the date for such a joint meeting and luncheon.

APPOINTMENTS IN MEDICAL SCHOOL AND HOSPITALS:

Lois C. Russell, Research Assistant, \$250 per month, November 5, 1948

Evelyn D. Stephens, Acting Head Nurse, \$210 per month with laundry, December 4, 1948

Approved.

TITLE AND SALARY CHANGES, MEDICAL SCHOOL AND HOSPITALS:

Dora Conder, Supervisor, increase from \$230 to \$240 per month, Dec 1, 1948

Nadine Epperson, change from General Staff Nurse, \$200 to Head Nurse at \$210 per month, December 1, 1948

Martha Nightengale, Supervisor, increase from \$210 to \$220 per month, Dec 1, 1948

Joan Thompson, General Staff Nurse, \$190 to \$200 per month, December 1, 1948

Approved.

RESIGNATIONS, MEDICAL SCHOOL AND HOSPITALS:

Margaret Alvarado, Nurse Aide, resigned November 27, 1948

Neda Boroughs, Nurse Aide, resigned December 8, 1948

Charlie W. Comstock, Orderly, December 14, 1948

Katherine Comer, Nurse Aide, November 30, 1948

Jesse Fortune, Janitor, resigned November 30, 1948

Paul M. Darden, Resident in Medicine, resigned November 1, 1948

M. T. Hamilton, Janitor, November 30, 1948

Letha Hester, Nurse Aide, November 30, 1948

Wilma Winfield Hollier, Staff Nurse, December 16, 1948

Rosemarie Hudson, Staff Nurse, December 17, 1948

Evie Kennedy, Laundress, November 20, 1948

Georgia M. Lawson, Laundress, November 30, 1948

Leland Lowe, Assistant Laundryman, November 30, 1948

Elnora Maker, General Staff Nurse, November 24, 1948

Gerald G. Meyers, Head Bracemaker, December 21, 1948

2974
January 12, 1949

Sam C. Miller, Clerk, December 4, 1948
Thelma Montgomery, Laundress, December 2, 1948
Hettie Nokes, Nurse Aide, December 13, 1948
Cecile N. Pike, Information Clerk, December 2, 1948
James I. Raper, Assistant Laundryman, December 13, 1948
Evelyn T. Riggs, Maid, November 30, 1948
Emma Robinson, Maid, Colored Ward, May 11, 1948
Viola Rounds, Nurse Aide, Polio Packer, November 30, 1948
Lee M. Robinson, Animal Caretaker, November 20, 1948
Ruby May Skvorc, Admitting Clerk, December 19, 1948
John Waldon Smith, Dairyman, Southern Okla Hospital, Nov 30, 1948
Lillie E. Smith, Waitress, Southern Okla Hospital, Nov 30, 1948
Ruby Lee Smith, Nurse Aide, November 20, 1948
Billie Slaughter, Laundress, November 30, 1948
Annabel Stallings, Tray Girl, November 30, 1948
Anna Thompson, General Staff Nurse, December 14, 1948
Bonnie Trinke, Supervisor, November 30, 1948
Flora Welker, Nurse Aide, Polio Packer, November 30, 1948
Marshall Wilson, Engineer, Southern Okla Hospital, August 31, 1948
H. B. Witten, Instructor, Psychiatry and Neurology, January 1, 1949
Ella Mae Yeadon, Staff Nurse, December 6, 1948

Accepted.

Recess for luncheon at 12:30 p.m. with Coach Bud Wilkinson as guest.

The meeting reconvened in the President's Office at 2:30 p.m.

President Cross discussed a new contract and agreement with Coach Bud Wilkinson and made the following report and recommendation concerning Mr. Wilkinson:

"Mr. Wilkinson was named Director of Athletics effective May 1, 1948, with all of the responsibilities and tenure implied by the title. However, the conditions of this employment were not made clear to Mr. Wilkinson, and I recommend that the following specific points be covered in a new contract which shall be offered to him effective as of January 1, 1949:

- "1. That Mr. Wilkinson be continued as Athletic Director at an annual salary of \$10,000 for 11 months service. As Director of Athletics, he shall be responsible for the management of all matters pertaining to intercollegiate athletics at the University of Oklahoma. More specifically, he shall have the responsibility of selecting and nominating for employment all personnel involved in intercollegiate athletics, including ticket sales, promotional activities, and business management. He shall select and nominate to the President's Office all head coaches, and after consultation with head coaches, all assistant coaches. He shall prepare

and recommend to the President budgets for all intercollegiate sports at the University of Oklahoma, and he shall have authority to administer the budgets after they have been approved. His authority and responsibility shall include also the scheduling of all intercollegiate athletic contests with the provision that the schedules and contracts must be approved by the President of the University in accordance with the regulations of the Regents of the University.

His tenure as Athletic Director shall be the same as that of any other employee of the University having what is known as "tenure."

2. That Mr. Wilkinson have the option of serving as Head Football Coach in addition to Athletic Director at an additional salary of \$5,000 a year for 11 months service. He shall serve as Head Football Coach for as long as he may think it in the best interests of the University and in his own best interests to do so. When he may decide that he no longer cares to serve as head coach, he shall, in keeping with his responsibilities as Athletic Director, nominate a new Head Coach of Football to the President of the University. If and when he may decide to retire from the position of Head Coach, he shall retain the position of Athletic Director, and in such capacity shall receive a salary of \$10,000 a year for 11 months service.
3. That he be reappointed Professor of Physical Education and as such be eligible for tenure and be considered for tenure as professor through the procedures established by the University for this purpose.

"Mr. Wilkinson has, I think, some reason to feel dissatisfied with the treatment which he has received at the University of Oklahoma. When he was considering offers from the Navy and Yale last spring, I gave him my personal assurance that if he would stay at the University of Oklahoma, he would find himself in as good or better position than those offered by the Navy and Yale. After he declined to consider the Navy position, his salary was raised \$1,000 a year, but was still \$1,000 less than what he might have received from the Navy, and his contract as Head Football Coach was not extended to meet the Navy offer. After he turned down the Yale position, no change in his salary was made and no change in the length of his contract as Head Football Coach was made. He was given the position of Director of Athletics, but he was given nothing in writing to indicate that this title carried with it tenure or security of any kind. He made no protest concerning these arrangements, but he went through the season feeling that he had little security here, and that little or no recognition had been taken of the fact that he had turned down fine positions in order to honor his contract with the University of Oklahoma.

"It is my feeling that Mr. Wilkinson should not suffer financial loss as a result of his decision to stay with Oklahoma despite offers from the Navy and Yale, and I recommend to the Regents that his total salary for 1948 be set at \$12,000 (not including the Christmas gift which was given in December) inasmuch as the Yale offer involved a salary of \$12,000 a year. If this recommendation is approved, Mr. Wilkinson should be paid an additional \$1,000 for his services of 1948, and I recommend that this amount be paid to him regardless of whether he accepts a new contract as described above."

2976
January 12, 1949

Mr. Benedum moved, all members present voting in the affirmative, that the recommendation be approved; also that in transmitting the contract to Mr. Wilkinson that the President's letter, and the minutes of the Regents reflect that Mr. Wilkinson has had tenure since the spring of 1948-- May 1--when he was originally appointed Director of Athletics.

The Chair declared the motion unanimously carried.

President Cross asked that the Regents consider the plans for the Stadium expansion program and stated Mr. Wright of Wright and Selby, Architects, would present the plans at this time. Mr. Wright, Mr. Kraft, and Mr. Cate were invited to the meeting and the plans were presented and explained by Mr. Wright.

Following examination and discussion of the plans, Mr. Benedum moved, and it was unanimously voted to approve the same as submitted. Mr. Wright and Mr. Kraft retired from the meeting.

Mr. Cate proposed, and President Cross recommended that advertisement of call for construction bids be placed, and that bids be received February 3, prior to the Regents meeting on February 9.

Regent Benedum seconded by Regent McBride moved approval of President Cross' recommendation. There being four members present, same being a quorum, all members, including the Chair voted in favor of the Benedum motion, and the Chair declared the motion unanimously carried.

The Board next considered the steps to be taken toward financing the construction of the Stadium addition and improvements.

Regent Benedum proposed the following resolution and moved adoption. The motion was seconded by Regent McBride.

RESOLUTION

WHEREAS, the Memorial Stadium at the University of Oklahoma was built in 1925 when the enrolment of the University was one-third the present enrolment, and

WHEREAS, the Board of Regents has since adopted the policy of admitting all full-time students to intercollegiate athletic events by virtue of their having paid the general enrolment fee,

BE IT RESOLVED by the Board of Regents of the University of Oklahoma that a need has been found to exist for construction of an addition and improvements to Memorial Stadium in order to serve the comfort, convenience and welfare of the student body of the University.

A vote was called for on the Benedum motion. There being four members present, same being a quorum, all members including the Chair voted in favor of the motion and the Chair declared the Resolution unanimously adopted.

President Cross then presented recommendations as follows:

- 9
- (1) That the Board of Regents receive sealed bids for Stadium Revenue Bonds of 1949 in the amount of \$1,200,000 at a public sale to be held at 11 A.M. February 9, and that the Secretary of the Board be authorized to advertise for such bids.
 - (2) That the Board of Regents approve an "Official Statement of the Board of Regents relating to the \$1,200,000 Stadium Revenue Bonds of 1949."

Copies of the proposed Official Statement were examined. Vice-President Cate explained that the statement incorporated suggestions from George J. Fagin, Oklahoma City Bond Attorney, and Dr. John B. Cheadle, Legal Adviser to the President of the University, and that the Official Statement specified all the principal terms of the proposed bond issue.

Mr. Cate pointed out that the Official Statement provides that the Regents agree to place in the Stadium Construction Fund in the State Treasury at the time of delivery of the bonds, not only the proceeds of the bond issue but also \$146,000 in cash "now in the hands of the Board of Regents and the Athletic Council," less any amount paid the Architect-Engineer for services in connection with this project.

The cash referred to, he explained, consists of the following items:

Balance in Press Box Construction Fund established by Regents in 1947-48	\$51,382.50
Cash from Athletic Council Operating Surplus 1948-49	<u>94,617.50</u>
	\$146,000.00

Mr. W. J. Cross, Business Manager for the Athletic Council, estimates that there will be a cash surplus of \$110,000 in the operation of intercollegiate athletics this year, and the Council also has a reserve of \$87,000 invested in government bonds, Mr. Cate reported.

The proposal to use approximately \$95,000 from the Athletic Council cash for the Stadium project would, according to present estimates, leave a surplus of approximately \$100,000 in the hands of the Athletic Council for construction of a new track and related facilities, for operating capital, and for reserve for emergencies, he said.

Regent Benedum then moved that the Board approve the recommendation of President Cross that the Board of Regents receive sealed bids for the Stadium Revenue Bonds of 1949 in the amount of \$1,200,000 at a public sale to be held at 11 A.M. February 9, and that the Secretary of the Board be authorized to advertise for such bids. Regent McBride seconded the motion. A vote was called for on the Benedum motion. There being four members present, same being a quorum, all members including the Chair voted in favor of the Benedum motion, and the Chair declared the motion carried.

2978

January 12, 1949

Regent Benedum then moved that the Board, in accordance with President Cross' recommendation, approve the "Official Statement of the Board of Regents Relating to the \$1,200,000 Stadium Revenue Bonds of 1949." Regent White seconded the motion. A vote was called for and there being four members present, same being a quorum, all members including the Chair voted in favor of the Benedum motion, and the Chair declared it carried.

The Official Statement is as follows:

THE REGENTS OF
THE UNIVERSITY OF OKLAHOMA



OFFICIAL STATEMENT

Relating to the public offering of

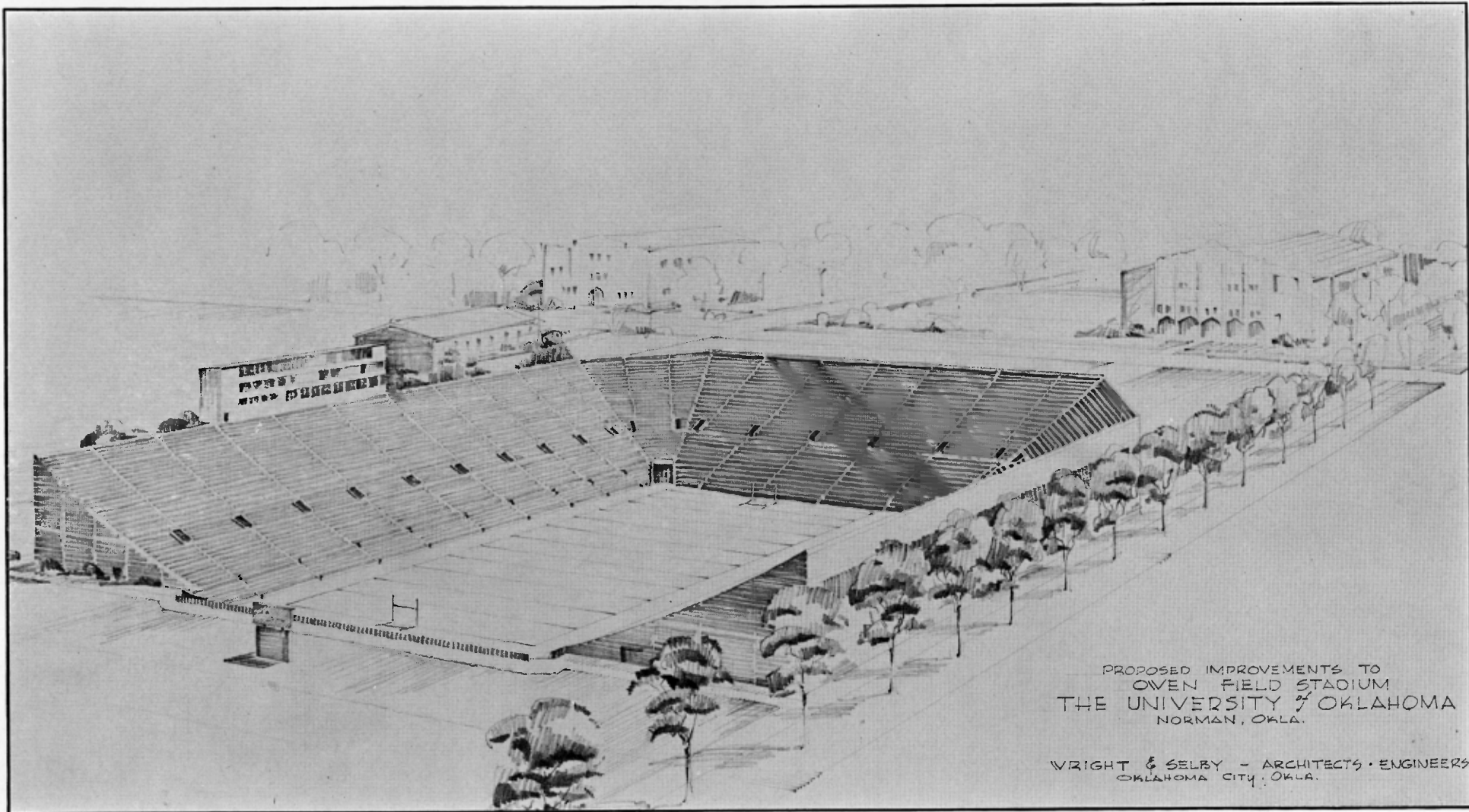
University of Oklahoma

\$1,200,000

Stadium Revenue Bonds of

1949

Sealed bids to be received until 11:00 A.M., February 9, 1949,
in the office of Emil R. Kraettli, Secretary of the
Board of Regents, Administration Building,
University of Oklahoma, Norman



PROPOSED IMPROVEMENTS TO
OWEN FIELD STADIUM
THE UNIVERSITY OF OKLAHOMA
NORMAN, OKLA.

WRIGHT & SELBY - ARCHITECTS • ENGINEERS
OKLAHOMA CITY, OKLA.

OFFICIAL STATEMENT OF THE BOARD OF REGENTS UNIVERSITY OF OKLAHOMA

RELATING TO \$1,200,000 STADIUM REVENUE BONDS OF 1949

The Board of Regents of the University of Oklahoma has determined that there is need for enlarging the Stadium at the University of Oklahoma to a total capacity of approximately 55,000, and constructing improvements such as a new press box, larger entrance ramps in the existing Stadium, and improved rest room facilities.

The need for such enlargement of the Stadium and construction of improvements "in order to serve the comfort, convenience and welfare of the students of the University" was stated by the Board of Regents in a formal resolution adopted January 9, 1949.

The present Stadium, consisting of two wings, one on the West and one on the East of the football field, was built in 1925 and has a seating capacity of 31,500. Book value of the present plant is \$288,000, but the present replacement value, based on differential in the Oklahoma City construction cost index between 1925 and 1948 is \$662,000. The present Stadium is fully paid for.

Proceeds of the Stadium Bonds will be used to:

(1) Close the North end of the Stadium to the height of the existing stands on the East and West. The North addition will be enclosed with masonry wall and windows, to provide a finished appearance, and will have a structural floor system for future two floors around the perimeter of the addition. Paved concourse and

adequate rest room facilities to serve this Stadium area will be provided. The North addition will add 17,150 seats to the capacity of the Stadium.

(2) Remove the present cinder track circling the football field, lower the level of the field six feet, extend seats downward ten rows on both sides and both ends of the field, install drainage system and re-sod playing field. This phase of the work will add 7,000 seats, of which 4,600 will be on the sides and 2,400 will be at the ends. A 1700-foot storm sewer line will provide gravity drainage, and a pumping system will not be required.

(3) Construct modern press and radio facilities behind the present West Stadium to consist of three levels to accommodate 64 writers, 8 broadcast booths and provision for television, photographers and scouts; served by elevator to transport personnel and equipment.

(4) Remodel existing West Stadium by providing modern rest room facilities, paving outer bay concourse under stand, increasing the existing entrance ramp widths to accommodate 50 per cent more crowd flow, and converting the existing press box location to seating area.

Plans and specifications were prepared by Wright and Selby, Architects and Engineers, Hightower Building, Oklahoma City. Construction bids will be received February 7.

NEED FOR STADIUM ENLARGEMENT

Average home football attendance at the University of Oklahoma for the last ten years, including the years of war-time low attendance, was 19,447. The average, omitting the three war years 1942-43-44 was 23,383.

Average home attendance for the last three years has been:

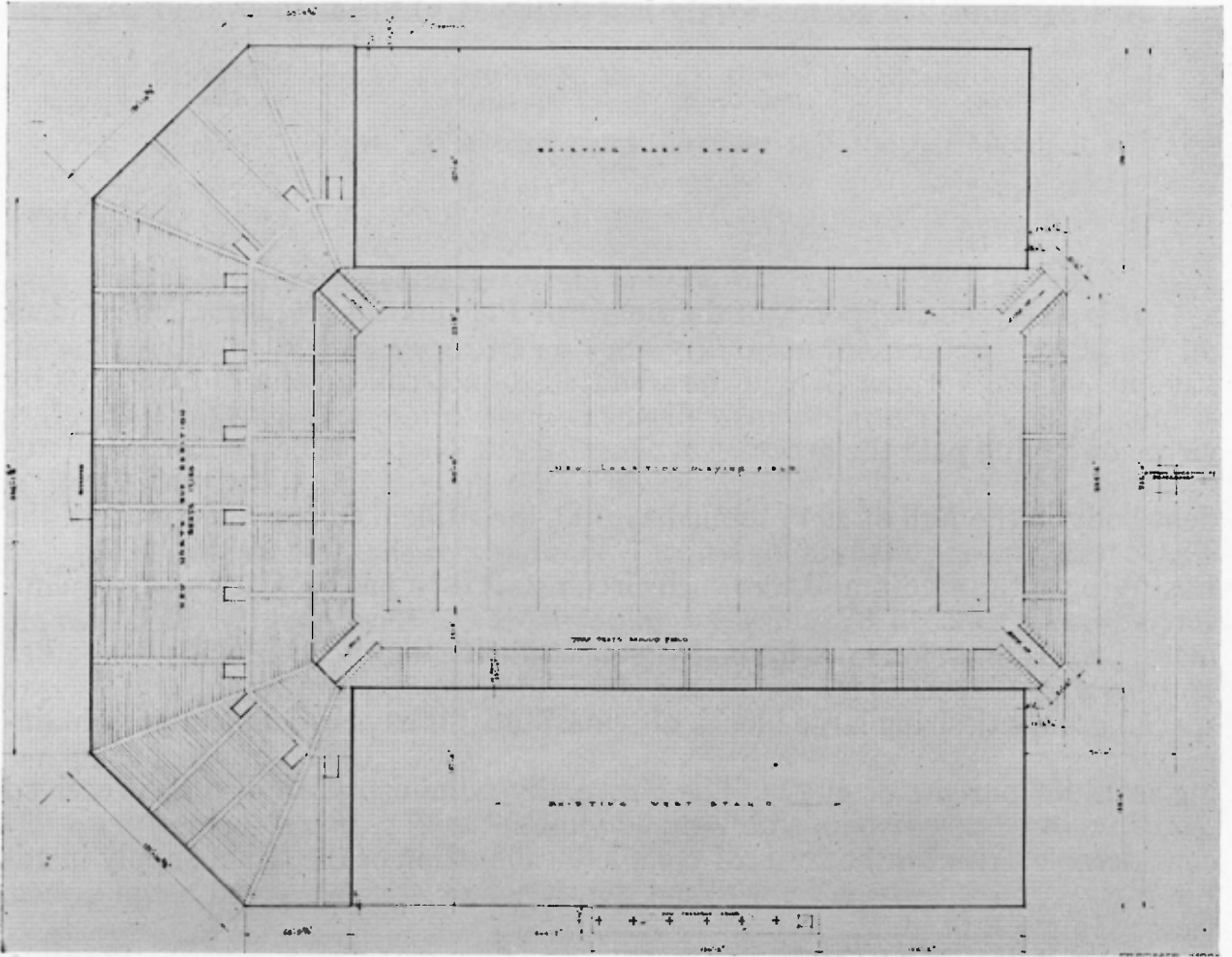
<i>Year</i>	<i>Number of Home Games</i>	<i>Total Annual Attendance</i>	<i>Average Per Game</i>
1946	4	109,618	27,404
1947	5	148,938	29,787
1948	4	123,276	30,819

It is an established policy of the Board of Regents that all full-time resident students on the Norman Campus be admitted to intercollegiate athletic events by virtue of having paid the general enrolment fee of \$48 per semester. Since the student body in the Fall of 1948 totaled 11,800, the students alone filled most of the East Wing of the Stadium. Under such circumstances, it has been necessary to eliminate special admission rates for high school students, high school bands, and other special groups desiring large blocks of seats. Students have had difficulty in obtaining seats for parents or guests. The University administration also has received considerable criticism because of complete exhaustion of the ticket supply in advance of important games.

The scheduling of desirable football opponents for games in Norman has been greatly handicapped by the limited seating capacity in the University Stadium.

Even before the prestige-building Sugar Bowl victory won by the University of Oklahoma football team January 1, 1949, negotiations with outstanding universities outside the Southwest indicated that "big-name" teams could not be brought to Norman to play before a maximum crowd of 31,500, but that they would be receptive, in many cases, to invitations to play the Sooners on a home-and-home basis if the Norman Stadium could be enlarged to 50,000 or more.

During the 1948 season, the Sooner football team played before a total of 396,000 spectators, including the Sugar Bowl game.



This drawing shows how seats are to be constructed across the North end of the existing Stadium at the University of Oklahoma, and how seats are to be added all around the lowered field

NOTICE OF SALE

The following public notice of the arrangements for sale of the bonds has been prepared for publication in the *Daily Bond Buyer*, New York, New York:

\$1,200,000

REGENTS OF THE UNIVERSITY OF OKLAHOMA

STADIUM REVENUE BONDS OF 1949

The Regents of the University of Oklahoma, Norman, Oklahoma, will receive sealed bids until 11 A.M., February 9, 1949, at the office of Emil R. Kraettli, Secretary of the Board, for the purchase of \$1,200,000 Regents of the University of Oklahoma Stadium Revenue Bonds of 1949; and at that time the Board will open and consider the sealed bids in the office of the President of the University.

Purpose of the issue is to provide funds to increase the capacity of the present University Stadium, seating 31,500, to approximately 55,000, to construct a new press box, and make other improvements. The present Stadium, with an estimated replacement value of \$662,000, is fully paid for.

The bonds will be dated March 1, 1949, will be coupon bonds of \$1,000 denomination, registerable as to principal, numbered serially from 1 to 1,200, inclusive. Principal and semi-annual interest (March 1 and September 1) payable at the office of the Trustee in Oklahoma City, Oklahoma, or at the option of the holder at the Manufacturers Trust Company in New York, New York. First interest coupon due March 1, 1950.

The bonds will become due in numerical order on March 1 of each year as follows:

<i>Year of Maturity</i>	<i>Amount</i>	<i>Year of Maturity</i>	<i>Amount</i>
1950	\$45,000	1960	\$60,000
1951	46,000	1961	62,000
1952	47,000	1962	64,000
1953	49,000	1963	66,000
1954	50,000	1964	68,000
1955	52,000	1965	70,000
1956	53,000	1966	72,000
1957	55,000	1967	74,000
1958	57,000	1968	75,000
1959	58,000	1969	77,000

Bonds maturing from 1955 to 1969, inclusive, are callable for redemption in inverse order of their serial numbers at the option of the Board of Regents on March 1, 1951, and on any interest payment date thereafter, at the principal amount plus premium equal to the following percentages of principal amount:

If called in 1951, 1952 or 1953	3 %
If called in 1954, 1955 or 1956	2½ %
If called in 1957, 1958 or 1959	2 %
If called in 1960, 1961 or 1962	1½ %
If called in 1963, 1964 or 1965	1 %
If called in 1966, 1967 or 1968	½ %

Notice of redemption shall be given not less than thirty days in advance by publication in a financial newspaper or journal in New York, and by registered mail to the holders of registered bonds to be redeemed.

The bonds will be a special obligation payable solely from net revenues of the Stadium (including proceeds of a student fee) and will not be an indebtedness of the State of Oklahoma or the University of Oklahoma or of the Board of Regents of the University of Oklahoma. The bonds will be issued under provisions of Senate

Bill No. 41 of the Acts of 1945, Oklahoma Legislature (Chapter 1a, Title 70, Page 295, Session Laws 1945) as amended by Senate Bill No. 143 of the Acts of 1947 (Chapter 45e, Title 70, Session Laws 1947).

Sealed bid should consist of an offer to purchase all of the bonds at not less than par and accrued interest at a single interest rate stated in multiples of one-eighth or one-tenth of one per cent, and expressed also in terms of total interest cost to the Board of Regents, assuming payment of all bonds at maturity. The award will be made to the bidder offering the lowest net interest cost to the issuer, considering the premium offered, if any. After the award is made, the Regents will give consideration to suggestions of the successful bidder for details of the bond resolution. The Regents reserve the right to reject any or all bids. Each bid must be accompanied by a certified or cashier's check in the amount of \$24,000 as evidence of good faith.

Approving opinion of Chapman and Cutler, Chicago, and approval of the Attorney General of the State of Oklahoma will be furnished without expense to the purchaser of the bonds. The Regents also will furnish all legal proceedings and will pay for the printing of the bonds.

Bidder should request copy of complete prospectus before submitting bid. Address inquiries to Roscoe Cate, Financial Vice-President, University of Oklahoma, Norman, Oklahoma.

Sealed bids should be addressed to Emil R. Kraettli, Secretary, Board of Regents, University of Oklahoma, Norman, Oklahoma, and should be marked on the outside of the envelope "Bid for Stadium Bonds."

Dated January 15, 1949.

EMIL R. KRAETTLI
Secretary, Board of Regents
University of Oklahoma
Norman, Oklahoma

TERMS OF THE BOND ISSUE

Following are further details of the terms of the bond issue, supplementing the information contained in the Notice of Sale:

Definition of Revenues. Revenues to be derived by the University from the operation of the Stadium shall, for the purposes of this bond issue, be considered to be the following:

(a) A student fee to be charged and collected so long as any of the bonds are outstanding from every full-time student in attendance on the Norman Campus of the University of Oklahoma during the regular academic year, beginning in September, 1949, for the availability and benefits of the Stadium in such amount per student in each bond year as will produce for such bond year (March 1 of each year to March 1 of the following year) not less than the sum of \$105,000, or 130 per cent of the average annual requirement for principal and interest payments of the bond issue, whichever is larger. The revenue defined in this paragraph shall be identified as "Stadium Fee Revenue."

(b) All other revenues to be derived from the operation of the Stadium, including gate receipts and concession income. The revenue defined in this paragraph shall be identified as "Stadium Operation Revenue."

All of the Stadium Fee Revenue for which provision is made in Paragraph (a) above shall be irrevocably pledged solely to the payment of principal and interest and redemption premiums of the bonds, and the necessary paying agent and trustee fees in connection with such payments.

In accordance with terms of an agreement between the Regents and the Athletic Council of the University of Oklahoma, a non-profit corporation organized to

conduct intercollegiate athletic operations for the University of Oklahoma under general policies established by the Board of Regents, all of the "Stadium Operation Revenue" shall be pledged to payment of the principal and interest and redemption premiums of the bonds and the necessary expense of operating and maintaining the Stadium to the extent such costs are not paid from other available funds, except that after a sufficient sum from any source has been deposited in the Principal and Interest Fund to meet in full the interest and principal payments and the required payments to reserve for any one bond year, the surplus Stadium Operation Revenue remaining at the end of that bond year may be used for repairs, replacements, improvements or additions to the Stadium, or for any other lawful purpose.

Application of Revenues. From and after the issuance of any of the bonds, the revenues to be derived from the operation of the Stadium shall be utilized as follows:

(a) All Stadium Fee Revenue derived from the collection of student fees as hereinabove provided shall be deposited in a fund to be identified as the "Stadium Bonds of 1949 Principal and Interest Fund." The money in this fund shall be used first in each bond year for the payment of principal of and interest on the bonds falling due in such period. After all requirements for current principal and interest have been provided for, the money in the Principal and Interest Fund shall be accumulated to an aggregate of \$100,000 as a reserve to insure prompt payment of principal and interest when due. The money remaining in the Bond Fund in each bond year after all current principal and interest have been paid and after the Reserve Fund has been accumulated to its full maximum amount and all payments made therefrom have been restored shall be used for the purpose of retiring prior

to maturity as many of the bonds as can be retired with the surplus so available. Until the bonds become optional for redemption such surplus may be used to purchase bonds of this issue on the open market at not more than par and accrued interest or to purchase obligations of the United States as investment until such time as bonds of this issue become redeemable.

The money in the Reserve Fund may be, by direction of the Board of Regents, invested in obligations of the United States of America.

An Oklahoma City bank acceptable to the Board of Regents shall be designated by the purchaser of the bonds to retain in special accounts, secured by an equivalent amount of United States Government bonds, the Principal and Interest Fund and the Reserve Fund, and to retain in its custody satisfactory evidence of the insurance on the Stadium, and to perform other duties specified for the trustee.

(b) All Stadium Operation Revenue, as hereinabove defined, shall be deposited by the Athletic Council in the University of Oklahoma Official Depository Fund in the State Treasury, in a special fund to be identified as the Stadium Operation Fund, the money to be paid out in the following order of priority:

First: To pay the necessary expenses of operating and maintaining the Stadium to the extent such costs are not paid from other available funds. If at any time the Stadium Operation Revenue shall prove to be insufficient to pay the necessary expenses of operating and maintaining the Stadium, including the cost of insurance and necessary replacements, renewals and repairs, the Board of Regents may in its discretion make up such deficiency through the application to such purpose of money currently available from the general operating and maintenance funds of the University, and if funds are not so applied, or if the funds so applied are insuffi-

cient, then any remaining deficiency shall be made up from the proceeds of an additional student fee to be charged and collected from every student in attendance at the University for the availability of the Stadium, which fee shall be in addition to the fee mentioned in Paragraph (a) above and shall be in an amount sufficient to pay all necessary expenses of maintenance and operation for which the funds hereinabove specified in this paragraph may prove insufficient, but not in excess of such amount.

Second: To pay to the Trustee for deposit in the Stadium Bonds of 1949 Principal and Interest Fund 30 days prior to any interest payment date the amount necessary at that time to make up any deficiency in the cash available in the Principal and Interest Fund for the purpose of meeting the impending payments due on principal and interest of the bonds and to the Bond Reserve Fund.

Third: At option of the Board of Regents, to call bonds prior to maturity or to purchase bonds in the open market at not more than the current redemption price.

Fourth: To pay for repairs, replacements, improvements or additions to the Stadium at any time during the bond year after the Trustee reports that sufficient money is available in the Principal and Interest Fund and the Reserve Fund to cover all payments to principal, interest and Reserve Fund that will fall due during that bond year.

Fifth: To pay to the Athletic Council of the University of Oklahoma at the end of each bond year the amount remaining in the Stadium Operation Fund after the requirements of the first four priorities have been met, the money so paid to be placed by the Athletic Council in a special account separate from its current operating revenue, and to be used by the Council for any lawful purpose.

Reserve for Interest During Construction. The Board of Regents agrees to use a sufficient amount of money from proceeds of the bond issue to establish a reserve for interest payments during the construction period, which is estimated to cover the first bond year.

Insurance. The Board of Regents agrees to carry fire and extended coverage insurance on the Stadium in an amount at least equal to the face value of all bonds outstanding payable from revenues of the Stadium, provided, however, that in case the amount of such bonds shall be greater than the insurable value of the Stadium then the Board shall insure to its insurable value. The Board agrees also to carry use and occupancy insurance on the Stadium in an aggregate amount equal at all times to the highest annual amount due for principal of and interest on all of the outstanding bonds payable from the revenues thereof in any year covered by the term of such policies.

Financial Reports. The Board of Regents covenants and agrees to keep proper books of account (separate and apart from all other records and accounts) in which complete and correct entries shall be made of all transactions relating to the operation and maintenance of the Stadium and the allocation and application of the revenues thereof, and that such books shall be available for inspection by the holders of any of the bonds at reasonable hours and under reasonable conditions. At the close of each calendar month the Comptroller of the University shall furnish, upon written request, to any person holding not less than 40 per cent of the bonds then outstanding, an interim statement of all transactions relating to the operation and maintenance of the Stadium and the application and allotment of the revenues thereof. Following the end of each bond year, the Board of Regents agrees to cause

an audit to be made by a certified public accountant and agrees to furnish to each holder of any of the bonds who may so request a complete operating and income statement covering the operation of the Stadium for such year.

Covenant Against Additional Bonds. So long as any of the 1949 Stadium Bonds remain outstanding, the Board of Regents agrees that it will not issue any additional bonds or obligations payable from revenues of the present Stadium and the additions and improvements to be paid for with the proceeds of the 1949 bonds, provided, however, that this covenant shall not be interpreted to prohibit the refunding of the entire issue (when subject to redemption by terms of the issue) under terms of Section 2 of Senate Bill 143 of the 1947 Oklahoma Legislature (Title 70, Chapter 45e, Session Laws 1947). The Board of Regents further agrees that in no event while any of the bonds remain outstanding will the Board of Regents mortgage or encumber the system or any part thereof or otherwise encumber or dispose of the system or any part thereof, except that the equipment thereof may be disposed of if it is replaced with equipment of not less than equal value.

Delivery of Bonds. If a satisfactory bid for the bonds is received and accepted by the Board of Regents on the day of the sale, February 9, it is anticipated that formal resolution of the Board authorizing issuance of the bonds and confirming the sale agreement will be adopted promptly thereafter. Suggestions of the successful bidder will be given consideration in drafting the details of the resolution. The bonds can be printed and submitted to the Attorney General of Oklahoma for his approval within a few weeks. Under Oklahoma law the bonds become incontestable 30 days after approval by the Attorney General if no action is filed within that time. Delivery will be made at the office of the State Treasurer.

USE OF PROCEEDS

The Board of Regents covenants that the proceeds from sale and delivery of the bonds (other than the amount received as accrued interest to date of delivery and the amount to be used as a reserve for interest during the construction period, which shall be paid by the State Treasurer to the Trustee for deposit in the Principal and Interest Fund) will be deposited in trust with the State Treasurer in a special fund known as the "Stadium Bonds Construction Fund" to be used solely for a) the payment of the cost of constructing and equipping the Stadium addition and improvements, and b) for the incidental expenses of issuing the bonds. Upon notice from the Board of Regents that the full amount needed for the above purposes has been charged against the construction fund, the State Treasurer shall pay the remaining balance to the Trustee for deposit in the Principal and Interest Fund, and to be used to establish the required Bond Reserve, or for payment of interest and principal of the bonds.

The Board of Regents of the University agrees that it will, at the time of delivery of the bonds and receipt of the proceeds, deposit in trust with the State Treasurer in the Stadium Bonds Construction Fund the sum of \$146,000 in cash now in the hands of the Board of Regents and the Athletic Council of the University, less any amount paid the Architect-Engineer for services on this project, and that this sum, together with the proceeds of the bond issue to be deposited in the construction fund as provided for above, will be used approximately as follows:

Construction Contracts:

North Stadium Addition	\$674,000	
Field Excavation, Drainage, and New Seats Around Excavation	184,000	
Press and Radio Facilities	134,000	
West Stadium Improvements	123,000	\$1,115,000
Reserve for Interest During First Year (estimated)		36,000
Architect-Engineer Fees and Financing Costs		75,000
Field Drainage System, Time Clock and Scoreboard, Other Equipment		20,000
Reserve for Contingencies		100,000
		<hr/>
		\$1,346,000

Plans and specifications for the Stadium addition and improvement were completed in January by Wright and Selby, Architects and Engineers, Hightower Building, Oklahoma City. Construction bids, accompanied by bid bonds, will be received February 7 and a tabulation of bids, along with recommendations of the Architect-Engineer, will be ready for consideration of the Board of Regents at the meeting February 9.

TAX STATUS

The interest on these bonds is exempt from all present Federal income taxes.

The bonds are not subject to taxation by the State of Oklahoma, or by any county, municipality or public subdivision thereof.

These bonds are eligible as security for all public funds in Oklahoma, and for the investment of all trust funds and sinking funds in the State.

LEGAL STATUS AND ENFORCEABILITY

The Board of Regents of the University was authorized by Senate Bill 41 (Chapter 1a, Title 70, Page 295, Session Laws 1945), enacted by the 20th Okla-

homa Legislature, as amended by Senate Bill 143 of the 21st Oklahoma Legislature (Chapter 45e, Title 70, Page 568, Session Laws 1947), to issue revenue bonds to finance the construction and equipping of "dormitories, kitchens, dining halls, auditoriums, student union buildings, field houses, stadiums, public utility plants and systems for the supplying of water, gas, heat or power to the University or such college or institution, and other self-liquidating projects and other revenue-producing buildings deemed necessary by said board for the comfort, convenience and welfare of their students and suitable for the purposes for which said institution was established, including additions to existing buildings used for such purposes."

General validity of the 1945 Act, with particular reference to constitutionality, was upheld in a ruling by the Oklahoma Supreme Court (in re application of the Board of Regents of the University of Oklahoma, 195 Okla. Reports 641; 161 Pac. 2nd 447).

Authority of the Board of Regents to charge and collect student fees for an improvement or utility (in this case a power and heating plant) under the circumstances specifically provided by the 1947 Act was upheld by a ruling of the Oklahoma Supreme Court (in re application of the Board of Regents of the University of Oklahoma, Oklahoma Bar Journal Vol. 19, No. 26, Page 993; 195 Pac. 2nd, 936). The plan for financing the Stadium addition is similar to the plan used in the power plant financing, in that student fee revenue is the basic security for each of the bond issues.

The 1945 Act, as amended, provides for enforceability of the terms of the bond issue as follows: "All such agreements and covenants entered into by the Board shall be binding in all respects upon the Board and its officials, agents and

employees, and upon its successors, and all such agreements and covenants shall be enforceable by appropriate action or suit at law or equity, which may be brought by any holder or holders of the bonds issued hereunder.”

The bonds will not be an indebtedness of the State of Oklahoma or of the University of Oklahoma or of the Board of Regents of the University of Oklahoma, but will be a special obligation payable solely from the revenues of the Stadium which is to be added to and improved with the proceeds of this issue.

The Act of 1947, referring to the kind of self-liquidating project which the Board of Regents is authorized to finance by bond issues, states: “x x x the board of regents shall have authority to charge and collect from all students in attendance at the University x x x or from any specified class or part thereof for which such facilities are so deemed necessary, fees and charges for the use or availability of such buildings and structures and for the services or commodities to be made available by such plants, systems or facilities. The proceeds of all such fees and charges shall be considered as revenues within the meaning of Section 3 hereof (referring to the 1945 Act) and the provisions of said section shall be applicable thereto.”

Upon delivery the bonds are incontestable in any court in the State of Oklahoma.

Proceedings of the bond issue will be prepared by Mr. George J. Fagin, Attorney, First National Building, Oklahoma City.

Legality to be approved by Messrs. Chapman and Cutler, Attorneys, 111 West Monroe Street, Chicago 3, Illinois, and by the Attorney General of the State of Oklahoma.

THE UNIVERSITY OF OKLAHOMA

The University of Oklahoma was established by an act of the first Legislature of the Territory of Oklahoma and offered its first instruction in 1892. Although now little more than fifty years old, it ranks 19th in resident enrolment among all the colleges and universities of the United States.

Number of students in residence on the Norman Campus in the Fall Semester of 1948-49 was 11,800.

The University is the largest institution of higher education in Oklahoma. It is supported by allocations of state funds from the Oklahoma State Regents for Higher Education (a co-ordinating board) which receives a consolidated appropriation from the State Legislature to finance the state institutions of higher education.

The main campus at Norman consists of 270 acres and has 51 buildings used for classrooms, laboratories, administration and service facilities. The University has acquired title to the former Norman Naval Air Station adjoining the City of Norman, and this facility has now become the North Campus of the University. The North Campus includes Max Westheimer Flying Field, the Extension Study Center and general extension offices, the School of Drama, the School of Architecture, the University Laboratory Schools, the Psychological Service Center, student housing in converted barracks buildings, and other specialized facilities.

The University also is using, on a temporary permit from the Navy, the facilities of the former Naval Air Technical Training Center which adjoins the University Campus.



Aerial view of the main campus of the University of Oklahoma, showing Stadium in upper left center

The work of the University School of Medicine is conducted at Oklahoma City. The Medical Center includes the School of Medicine Building, the University Hospitals, and a School of Nursing Building.

On the Norman Campus the University offers work leading to the Bachelor's degree in Arts and Sciences, Business Administration, Education, Fine Arts, Engineering, Law and Pharmacy. It also grants masters' and doctors' degrees in many fields.

In 1947-48, the University conferred 41 per cent of all the degrees granted by state supported institutions of higher education in Oklahoma, and enrolled 34.5 per cent of all the students in the state system.

The University is located 20 miles South of Oklahoma City, and is geographically very close to the center of the State. Norman is connected to Oklahoma City by U. S. Highway 77 and by State Highway 74. The latter is popularly known as the "football highway" since it was hard-surfaced partly in order to relieve football-day traffic congestion on Highway 77. A four-lane "super-highway" between Norman and Oklahoma City has been favored for several years by State and Federal highway engineers, and actual scheduling of construction is expected as soon as the problems of routing can be resolved. State Highway 9 affords easy access to Norman from the East and West.

The Santa Fe Railway runs within easy walking distance of the University Stadium, and a large number of Oklahoma City football fans come to the games by special train.

Oklahoma City, with a population currently estimated at 285,000, has no large stadium, and its football fans find Norman conveniently close.

The University airport frequently accommodates fifty or more planes bringing football parties to Norman for a home game when the weather is good. (Oklahoma has good flying weather 88 per cent of the time.)

The University charges no tuition from Oklahoma students. Non-residents pay a semester non-resident fee of \$120. All students pay a general fee of \$48 per regular semester which covers laboratory and incidental fees.

The only portion of the \$48 student fee now allotted for retirement of capital indebtedness is the Power and Heating Plant fee of \$6 per regular semester. The Board of Regents is committed to the collection of a student fee as security for Student Union bonds to be issued in the future by the Board of Governors of the Oklahoma Student Union (a non-profit corporation), in an amount yet to be determined, for enlargement of the existing Student Union Building.

It is estimated that the Stadium bond issue debt retirement plan will require a semester fee of \$5 with University enrolment at the present level.

The numerous experts who have made studies of the probable trend of college enrolments during the next decade agree that the marked decline in the number of veteran students to be expected in the early '50s will cause only a temporary dip in the upward movement of total college enrolments. Some of the reasons are:

(a) Plotting of a scientific "growth curve" to project the increase in college enrolments that occurred between 1922 and 1946 indicates that even without the veterans' bulge, college enrolments would continue to increase on a curve which would not markedly flatten out until about 1960. The proportion of young people of college age who go to college is increasing.

(b) The great increase in the birth rate during and immediately after the World War II will be reflected in college enrolments in the '50s.

(c) The enrolment of veteran students is in part a normal increase which would have occurred even though the individuals were not veterans. It is pointed out that the significance of the federal educational benefits for veterans as a stimulus to enrolment might have been overestimated since the real dollar value of the veteran's subsistence allotment is little more than that of the NYA aid given students in the '30s. Moreover, there are increasing indications that federal funds may be used to provide scholarships for non-veterans in the near future.

The government of the University of Oklahoma is vested in a Board of Regents consisting of seven members appointed by the Governor for seven-year overlapping terms, one term expiring each year.

The Board of Regents constitutes a body corporate by the name of "Regents of the University of Oklahoma." The board was established by constitutional amendment. The vitalizing act passed by the Legislature provides that the Board "shall possess all the powers necessary or convenient to accomplish the objectives and perform the duties prescribed by law, and shall have the custody of the books, records, buildings, and all other property of the University."

Present membership of the Board is as follows:

Erl Deacon, Cushing, president of the Board, sales representative for oil field equipment.

Don Emery, Bartlesville, vice-president of the Board, vice-president and general counsel of the Phillips Petroleum Corporation.

Joe W. McBride, Anadarko, editor and publisher of the Anadarko Daily News; operator of a chain of newspapers in Oklahoma.

Ned Shepler, Lawton, editor and publisher of the Lawton Constitution, former president of the Oklahoma Press Association.

Dr. Oscar R. White, Oklahoma City, physician and surgeon; associate professor of surgery on the clinical faculty of the University of Oklahoma School of Medicine.

T. R. Benedum, Norman, attorney.

Lloyd Noble, Ardmore, president of the Noble Drilling Corporation, president of the Old Ocean Oil Corporation, and president of the Samedan Oil Corporation.

The above Official Statement of the Board of Regents Relating to the \$1,200,000 Stadium Revenue Bonds of 1949 was approved and adopted at the regular meeting of the Board held January 12, 1949.

BOARD OF REGENTS OF THE
UNIVERSITY OF OKLAHOMA

By ERL E. DEACON, *President*

ATTEST:

EMIL R. KRAETTLI, *Secretary*

EXHIBIT I

REGENTS OF THE UNIVERSITY OF OKLAHOMA \$1,200,000 STADIUM REVENUE BONDS ANALYSIS OF MATURITY SCHEDULE

Assuming, for Purposes of Example, an Interest Rate of 3%
Accumulated Reserve from Fee Fund Calculated on Total Annual Application of \$105,000

	<i>Interest</i>	<i>Principal</i>	<i>Required Reserve</i>	<i>Total Payment</i>	<i>Bonds Unpaid</i>	<i>Accumulated Excess Fee Collections</i>	<i>Estimated Stadium Net Revenue</i>
1950	\$36,000	\$45,000	\$20,000	\$101,000	\$1,155,000	\$ 4,000	\$25,000
1951	34,650	46,000	20,000	100,650	1,109,000	8,350	25,000
1952	33,270	47,000	20,000	100,270	1,062,000	13,080	25,000
1953	31,860	49,000	20,000	100,860	1,013,000	17,220	25,000
1954	30,390	50,000	20,000	100,390	963,000	21,830	25,000
1955	28,890	52,000		80,890	911,000	45,940	25,000
1956	27,330	53,000		80,330	858,000	70,610	25,000
1957	25,740	55,000		80,740	803,000	94,870	25,000
1958	24,090	57,000		81,090	746,000	118,780	25,000
1959	22,380	58,000		80,380	688,000	143,400	25,000
1960	20,640	60,000		80,640	628,000	167,760	25,000
1961	18,840	62,000		80,840	566,000	191,920	25,000**
1962	16,980	64,000		80,980	502,000	215,940	25,000
1963	15,060	66,000		81,060	436,000	239,880	25,000
1964	13,080	68,000		81,080	368,000	263,800*	25,000
1965	11,040	70,000		81,040	298,000	287,760	25,000
1966	8,940	72,000		80,940	226,000	311,820	25,000
1967	6,780	74,000		80,780	152,000	336,040	25,000
1968	4,560	75,000		79,560	77,000	361,480	25,000
1969	2,310	77,000		79,310	-----	387,170	25,000

Average annual requirement for interest and principal \$80,641.50
30% over-collection of fee revenue would provide total of \$104,833.95

* Application of the required fee revenue in excess of principal and interest requirements would be sufficient (along with the \$100,000 bond reserve) to retire all except \$5,000 of the entire issue by the end of the fifteenth bond year.

** Accumulated reserves plus estimated net revenue from operation of the Stadium would be sufficient to retire all bonds by the end of the twelfth bond year (1961), and leave a surplus of \$25,920.

EXHIBIT II

THE UNIVERSITY OF OKLAHOMA STATEMENT OF BONDED INDEBTEDNESS JANUARY 1, 1949

<i>Purpose of Issue</i>	<i>Date of Issue</i>	<i>Amount</i>	<i>Reduction</i>	<i>Outstanding Jan. 1, 1949</i>
<i>Regents' Issues</i>				
Apartment-Dormitories	April 15, 1946	\$ 275,000.00	\$ 8,000.00	\$ 267,000.00
Dormitory Bonds of 1946	July 1, 1946	1,500,000.00	285,000.00	1,215,000.00
Music Practice Building	June 1, 1947	175,000.00	—0—	175,000.00
Dormitory Bonds of 1948	January 1, 1948	2,400,000.00	—0—	2,400,000.00
Power and Heating Plant	May 1, 1948	1,800,000.00	—0—	1,800,000.00
<i>University Housing Authority</i>				
Dormitory Purchase	June 1, 1946	200,000.00	16,000.00	184,000.00

EXHIBIT III

RESIDENT ENROLMENT, NORMAN CAMPUS OF THE UNIVERSITY OF OKLAHOMA 1936-37 TO 1948-49

	<i>Fall Term</i>	<i>Spring Term</i>	<i>Total Enrolments, Two Semesters</i>	<i>Application Of \$5 Semester Fee</i>
1936-37	5,409	5,070	10,479	\$ 52,395
1937-38	5,893	5,517	11,410	57,050
1938-39	6,397	6,057	12,454	62,270
1939-40	6,596	6,117	12,713	63,565
1940-41	6,311	5,424	11,735	58,675
1941-42	5,575	4,656	10,231	51,155
1942-43	4,235	3,349	7,584	37,920
*1943-44	3,484	2,201	5,685	28,425
*1944-45	3,084	2,767	5,851	29,255
*1945-46	3,783	5,501	9,284	46,420
1946-47	9,846	9,613	19,459	97,295
1947-48	11,986	10,938	22,924	114,620
1948-49	11,800	10,600†	22,400	112,000
13-year average	6,492	5,985	12,477	62,385

* Includes Army and Navy Trainees in College-Level Courses

† Estimated

EXHIBIT IV

FOOTBALL ATTENDANCE AT HOME GAMES, UNIVERSITY OF OKLAHOMA 1939 TO 1948

<i>Year</i>	<i>Number Of Home Games</i>	<i>Total Annual Attendance</i>	<i>Average Per Game</i>
1939	4	93,064	23,266
1940	5	102,588	20,517
1941	5	78,948	15,789
<hr/>			
1942	4	46,406	11,601
1943	5	42,800	8,560
1944	5	55,509	11,101
<hr/>			
1945	6	112,879	18,813
1946	4	109,618	27,404
1947	5	148,938	29,787
1948	4	123,276	30,819
Ten-year			
average	4.7	91,403	19,447
Average omitting			
1942-43-44	4.7	109,901	23,383

EXHIBIT V

INCOME AND EXPENSE OF INTERCOLLEGIATE ATHLETICS,
UNIVERSITY OF OKLAHOMA, 1936 TO 1949

	Intercollegiate Athletics Income			Total Expense	Gain or Loss	Net Worth, End of Year
	Football	All Other	Total			
1936-37	\$ 74,753.85	\$ 23,818.95	\$ 98,572.80	\$ 93,189.25	\$ 5,383.55	\$ 63,388.07
1937-38	81,313.89	31,079.01	112,392.90	94,199.48	18,193.42	81,581.49
1938-39	161,215.67	40,367.88	201,583.55	167,460.59	34,122.96	113,455.89
1939-40	169,877.12	43,509.70	213,386.82	163,520.79	49,866.03	163,325.92
1940-41	157,763.70	44,064.05	201,827.75	199,762.15	2,065.60	162,522.58
1941-42	109,361.28 ¹	39,556.65	148,917.93	139,921.88 ¹	8,996.05	171,576.48
1942-43	61,792.86	31,247.34	93,040.20	102,042.45	(9,002.25) ²	159,890.38
1943-44	60,512.63	21,014.50	81,527.13	56,678.53	24,848.61	183,721.64
1944-45	65,503.38	26,506.36	92,009.74	77,457.86	14,551.88	200,030.39
1945-46	139,598.46	40,556.68	180,155.14	168,018.24	12,136.90	210,957.92
1946-47	177,239.64	107,434.65	284,674.29	311,379.72	(26,705.43) ²	71,036.17 ³
1947-48	209,430.90	79,498.28	288,929.18	245,844.34	43,084.84	114,141.81
1948-49 ⁴	179,000.00	105,800.00	284,800.00	280,768.00	4,032.00	-----
Thirteen-Year						
Average	126,720.00 ⁵	48,804.00	175,524.00	161,557.00	13,967.00	

Explanatory Notes:

¹ Beginning in 1941-42, game guarantees to visiting teams were deducted from income rather than shown as operating expense in the audit reports.

² Parenthesis indicates operating loss.

³ In order to put the financial statement more nearly on a cash basis, the following were written off as assets as of June 30, 1947: \$3,200.00 in current inventories, \$27,872.92 in permanent equipment and improvements, \$14,850.00 in "Notes receivable from Stadium-Union," and \$67,293.40 in "Advance to Stadium-Union."

⁴ Figures for 1948-49 are original budget estimate made July 1, 1948. Complete data for 1948 football income was not yet compiled on December 15; and these figures make no allowance for income from Sugar Bowl game scheduled January 1, 1949.

⁵ The football income figures do not include receipts from faculty and student season athletic tickets.

EXHIBIT VI
BALANCE SHEET OF THE UNIVERSITY OF OKLAHOMA
 June 30, 1948

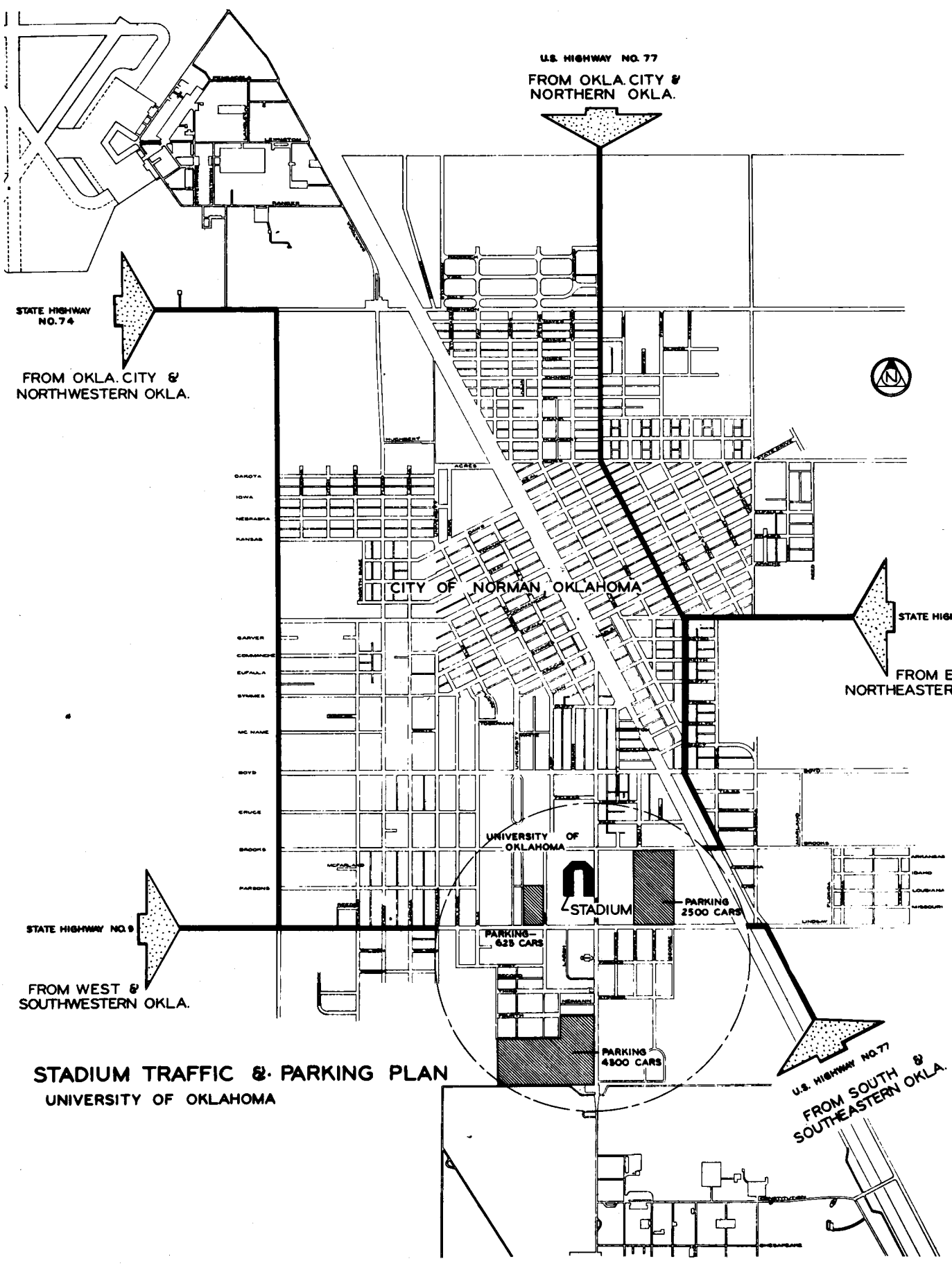
ASSETS

I. Current Funds			
Cash			
Petty Cash	10,000.00		
Fees and Service Cash in Official Depository	512,750.27		
Revolving Fund	332,264.14		
State Appropriations	43,002.83		
Auxiliary Enterprises	359,152.55		
Restricted Funds	57,850.82		
Sinking Funds	524,790.00	1,839,810.61	
Accounts Receivable			
General University	417,547.40		
Auxiliary Enterprises	279,517.95	697,065.35	
Inventories			
Storerooms	181,623.98		
Auxiliary Enterprises	263,145.28	444,769.26	2,981,645.22
II. Loan Funds			
Cash		24,352.39	
Loans		9,764.65	
Investments		291,772.00	
Judgments		66.20	325,955.24
III. Endowment Funds			
Cash		2,870.38	
Investments		205,946.41	
Real Estate		72,806.89	
United States Land Grants		5,650,113.62	5,931,737.30
IV. Plant Funds			
General University			
Cash		735,474.03	
Capital Assets			
Equipment	1,982,629.50		
Books	1,022,448.79		
Museum	837,273.04		
Buildings	5,570,591.28		
Improvements other than Buildings	550,486.44		
Land	268,364.21		
Construction in Progress	59,302.71	10,291,095.97	
Auxiliary Enterprises			
Cash		1,714,286.18	
Capital Assets			
Equipment	438,588.61		
Buildings	2,942,134.17		
Land	31,500.00		
Construction in Progress	1,711,886.18	5,124,108.96	17,864,965.14
V. Agency Funds			
Cash			317,260.22
TOTAL ASSETS			<u><u>27,421,563.12</u></u>

EXHIBIT VI (continued)

LIABILITIES

I. Current Funds			
Claims Payable			
General University	29,968.28		
Auxiliary Enterprises	73,943.26	103,911.54	
Interest Payable			
Auxiliary Enterprises		271,773.38	
Deferred Income			
Auxiliary Enterprises		91,754.06	
Current Surplus and Reserves			
General University			
Reserves for:			
Working Capital	196,623.98		
Orders and Contracts Outstanding	252,659.69		
Transfers to Plant	6,000.00		
Fund Balances	1,011,936.67	1,467,220.34	
Auxiliary Enterprises			
Reserves for:			
Doubtful Accounts	3,815.58		
Housing Deposits	5,323.89		
Retirement of Indebtedness	152,166.10		
Fund Balances	817,829.51	979,135.08	
Restricted Funds			
Reserve for Debt Retirement	10,000.00		
Fund Balances	57,850.82	67,850.82	2,981,645.22
II. Loan Funds			
Principal of Funds			
Lew Wentz Foundation		208,903.31	
Oklahoma University Student Loan Aid Association		117,051.93	325,955.24
III. Endowment Funds			
Mortgage			
		19,710.00	
Expendable Income			
		2,132.86	
Principal of Funds			
		5,909,894.44	5,931,737.30
IV. Plant Funds			
General University			
Unexpended Plant Fund Balances			
Claims Payable	72,703.86		
Orders and Contracts Outstanding	134,235.21		
Fund Reserves	528,534.96	735,474.03	
Bonds Payable			
		175,000.00	
Net Investment			
		10,116,095.97	
Auxiliary Enterprises			
Unexpended Plant Fund Balances			
Claims Payable	2,400.00		
Orders and Contracts Outstanding	1,228,914.20		
Fund Reserves	482,971.98	1,714,286.18	
Bonds Payable			
		4,308,000.00	
Net Investment			
		816,108.96	17,864,965.14
V. Agency Funds			
Fund Balances			
			317,260.22
TOTAL LIABILITIES			
			<u>27,421,563.12</u>



U.S. HIGHWAY NO. 77
FROM OKLA. CITY &
NORTHERN OKLA.

STATE HIGHWAY NO. 74
FROM OKLA. CITY &
NORTHWESTERN OKLA.

CITY OF NORMAN OKLAHOMA

STATE HIGHWAY NO. 9
FROM EAST
NORTHEASTERN OKLA.

UNIVERSITY OF
OKLAHOMA

STADIUM

PARKING
2500 CARS

PARKING—
625 CARS

PARKING
4300 CARS

STATE HIGHWAY NO. 9
FROM WEST &
SOUTHWESTERN OKLA.

STADIUM TRAFFIC & PARKING PLAN
UNIVERSITY OF OKLAHOMA

U.S. HIGHWAY NO. 77
FROM SOUTH &
SOUTHEASTERN OKLA.

January 12, 1949

2980

President Cross then recommended that, in order to have funds available promptly for payments becoming due to the Architect-Engineer preparing the plans and specifications for the Stadium addition and improvements, the Board of Regents:

- a) set aside for such purpose the balance of \$51,382.50 in the fund previously earmarked as the Press Box Construction Fund, under a new designation as "Stadium Architectural Fund," and
- b) Direct that such fund be deposited in escrow with the State Treasurer to be used solely for payment of fees becoming due to the Architect-Engineer having the contract for preparation of plans and specifications for the Stadium addition and improvements; provided, that upon delivery of the Stadium Revenue Bonds of 1949 to the purchaser and receipt of the proceeds by the Regents, and the establishment of a "Stadium Bonds Construction Fund" with the proceeds of the bonds the balance in the said escrow fund at that time shall be transferred by the State Treasurer to the Stadium Bonds Construction Fund, along with the existing encumbrance outstanding against the escrow fund.

Regent Benedum moved that this recommendation by President Cross be approved. Regent McBride seconded the motion and a vote was called for. There being four members present, same being a quorum, all members including the Chair voted in favor of the motion, and the Chair declared the motion carried.


President Cross recommended that the action taken at the meeting on November 10, 1948, discontinuing the position of Associate Dean of the Faculty of the School of Medicine at the close of the current semester be rescinded. This action in effect terminated the appointment of Dr. Henry Turner, presently Associate Dean of the Faculty.

The recommendation was unanimously approved.

President Cross requested approval of the appointment of Harrell E. Garrison, as Professor of Elementary Education and Director of the Reading Clinic, College of Education, effective September 1, 1949, at a salary of \$5,000 for the nine months school year. Also that Professor Garrison's appointment on the summer school staff, 1949, at a salary of \$1,000 for the two months be approved.

On motion by Regent Benedum, the appointment of Mr. Garrison was approved as recommended.

There being no further business, the meeting was adjourned at 3:00 p.m.


Secretary

January 12, 1949

2981

APPOINTMENTS OF NON-ACADEMIC EMPLOYEES NOT SUBMITTED TO THE REGENTS FOR APPROVAL IN ACCORDANCE WITH A RESOLUTION ADOPTED ON OCTOBER 1, 1948:

- (a) Appointments on an hourly rate.
- (b) Appointments to part-time positions.
- (c) Temporary full-time appointments expected to continue not more than 3 months
- (d) Appointments of skilled, semi-skilled and common laborers employed on a daily or semi-monthly basis for construction, repair and grounds work.
- (e) Appointments to salaried positions in which the salary rate is less than \$200 per month.

NON-ACADEMIC APPOINTMENTS:

Paul George Brockman, Laboratory Assistant (Clay Processor) School of Art, \$45 per month for 9 months 1/4 time, December 1, 1948 to June 1, 1949

Marjorie J. Cosman, Clerk-typist, Publishing Division, University Press, \$120 per month November 29, 1948

Katherine M. Everett, Clerical Stenographer, Biological Survey, \$85 per month for 7 months service, 2/3 time, December 1, 1948

Elizabeth Dean Ezell, YWCA Secretary, Office of Dean of Students, \$125 per month, January 1, 1949

Nellie Lee Fisk, Housekeeper, Home Economics, \$120 per month, December 13, 1948

Elton L. Jeffries, Tool Room Attendant, Industrial Education, \$150 per month effective January 3, 1949

Louise T. Leamy, Clerical Stenographer, Alumni Records Office, \$130 per month, December 1, 1948

Constance Thompson Painter, General Office Clerk, University Guidance Service, \$125 per month, December 1, 1948

Mary Margaret Read, Clerk-typist, Veterans Liaison Office, \$1440 for 12 months, December 1, 1948

Lawson Thomas, Laboratory Assistant, School of Art, \$45 per month for 9 months service, 1/4 time, December 1, 1949

NON-ACADEMIC CHANGES:

Faye Allen, Personnel Clerk, Employment Service, \$130 to \$140 per month, January 1, 1949

Betty Jane Costanza, Clerk-typist, Purchasing Office, \$125 to \$130 per month January 1, 1949

2982
January 12, 1949

Philip Parish, Librarian I, University Library, extend appointment to July 1, 1949 at \$120 per month

Betty Louise Fox, change title from General Office Clerk to Senior General Office Clerk, increase salary from \$135 to \$140 per month, January 1, 1949

Neysa Dean Koger, Office of the Comptroller, \$135 to \$140 per month January 1, 1949

Frances Jones Maurer, Clerk-typist to General Office Clerk, Veterans Liaison Office, \$120 to \$125 per month, January 1, 1949

Hartzell H. Rhynes, transfer from Janitor Service, Physical Plant to Printing Division, University Press, change title from Building Custodian to Shipping Clerk and increase salary from \$135 to \$150 per month, December 16, 1948

Gwynne I. Rogers, change from Account Clerk to Claims Clerk, Office of the Comptroller and increase salary from \$130 to \$140 per month, Jan 1, 1949

Jeane Shuman, General Office Clerk, Veterans Liaison Office, \$120 to \$125 per month, January 1, 1949

Neva Smith, Assistant Practice Supervisor, School of Music, change from 1/4 time at \$450 for 12 months to 7/8 time at \$1575 for 12 months, November 22, 1948

Mrs. Patricia Payte Smith, Clerical Stenographer to Clerical Secretary and increase from \$145 to \$150 per month, January 1, 1949

Katherine Staton, Account Clerk, Office of the Comptroller, appointment continue through June 30, 1949 at \$130 per month, December 1, 1948

Lola Belle Stonis, change from Clerical Secretary to Administrative Secretary, Office of the Director of Extension Division, \$145 to \$160 per month, January 1, 1949

Nancy Ellen West, General Office Clerk to Clerical Secretary, Social Work, increase salary from \$130 to \$140 per month, January 1, 1949

HOUSING APPOINTMENTS AND CHANGE:

James Presley Bridges, transferred from PFHA South Campus Housing to Whitehand Hall, \$120 to \$135 per month, December 1, 1948

Ernest Raymond Woodring, Building Custodian, Housing Office, \$120 per month, effective December 1, 1948

INFIRMARY:

Betty Marie Kendrick, Assistant Cook, \$120 per month, effective December 1, 1948

January 12, 1949

RESEARCH INSTITUTE:

Louis E. Diamond, Research Associate, \$100 per month, December 1, 1948 to May 31, 1949, 1/4 time.

Charles F. Engles, Assistant, \$60 per month, 1/4 time, December 1, 1948

Loretta W. Graham, Assistant, \$60 per month, December 1, 1948, 1/4 time

Constance June Raab, Assistant, December 1, 1948 at \$60 per month 1/4 time

William Schriever, Project Supervisor, \$150 per month, 1/4 time, December 1, 1948

PHYSICAL PLANT:

Transfers:

John E. Boyle, transfer from North Campus Administration to Receiving and Inventory Department, title from Assistant Storekeeper to Storekeeper and salary from \$150 to \$165 per month, January 1, 1949

Harry D. Lawrence, transfer from South Campus Administration to Receiving and Inventory Department with no change in title as Storekeeper, no change in salary of \$185 per month, January 1, 1949

Appointments:

Earl Witt Butts, Policeman, Police Department, \$160 per month, January 1, 1949

Leonard B. England, Fireman, \$75 per month, January 1, 1949

Mose William Hewitt, Building Custodian, Janitor, Dept, \$135 per mo, Dec 16, 1948

George Charles Schneider, Fireman, \$75 per month, January 1, 1949

Cloyd Richard Shelton, Fireman, \$170 per month, January 1, 1949

Coleman Snow, Building Custodian, \$100 per month, December 1, 1948

Coy Howard Webb, Fireman, \$170 per month, January 1, 1949

SCHOOL OF MEDICINE AND UNIVERSITY HOSPITALS:

Title and Salary Changes:

Nadine Adams, Stenographer, \$135 to \$145 per month, December 1, 1948

George N. Austin, Assistant Caretaker, transfer from USPH 393-C to Department of Pathology at \$50 per month, December 1, 1948

Ora Capell, Laundress, increase from \$85 to \$95 per month, December 1, 1948

Robbie Car, Diet Kitchen Maid to Assistant Cook, Pay Cafeteria, \$70 to \$75 per month, effective December 1, 1948

2984

January 12, 1949

Frances Fern Davis, Technician, \$180 to \$190 per month, December 1, 1948

Joyce Geisler, Stenographer, \$135 to \$145 per month, December 1, 1948

John Howard, Cook, Hospitals, \$110 to \$125 per month, December 1, 1948

Sherman C. Keller, Apprentice Bracemaker, \$140 to \$155 per month
January 1, 1948

Robert W. King, Assistant, \$50 to \$70 per month for December, 1948.

Wesley Manning, Technician, USPH Project 393-C to Department of
Pathology at \$50 per month, effective December 26, 1948

Barbara Reiter, Technician, transfer from USPH 393-C to Department of
Pathology at \$175 per month, December 1, 1948

Sarah Ruth, change from Assistant Cook, Pay Cafeteria to Relief Cook,
December 1, 1948

Fannie L. Tramel, Laundress, \$85 to \$90 per month, December 1, 1948

Gloria Versaw, Secretary, \$130 to \$140 per month December 1, 1948

Andrew Wisniewski, Engineer, \$160 to \$175 per month, December 1, 1948

APPOINTMENTS:

Ina D. Ashley, Laundress, \$85 per month, November 30, 1948

George R. Atkins, Assistant Laundryman, \$125 per month, December 1, 1948

Vincent C. Bash, Animal Caretaker, part time \$37.50 per month, Nov 15, 1948

Dr. Cleve Beller, Clinical Assistant, Department of Medicine in addition
to present appointment at no additional salary, January 1, 1949

Pearl Blalock, Nurse Aide, \$90 per month, December 16, 1948; \$100 per month
January, \$110 per month June, 1949.

Mary L. Brown, Laundress, \$85 per month, November 29, 1948

Cora B. Burleigh, maid, \$85 per month, December 14, 1948

Dr. Daisy G. Cotten, Clinical Assistant, Department of Obstetrics,
Clinical Rates, January 1, 1949

Randell E. Davis, Animal Caretaker, part time \$37.50 per month, Dec 1, 1948

Ruby L. Dehner, General Staff Nurse, \$190 per mo with laundry Dec 1, 1948

Elma O. Ewing, Laundress, \$85 per month, December 6, 1948

Pearl Breeden, Nurse Aide, \$90 per month, Dec 9, 1948; \$100 per month
January, 1949; \$110 per month June, 1949

2985
January 12, 1949

Henry Charles Great, Janitor, \$100 per month, December 2, 1948

George W. Harris, Engineer, Southern Oklahoma Hospital, \$100 per mo, 9-1-48

E. May Hembre, Diet Kitchen Maid, \$70 per month with meals and laundry of uniforms, December 1, 1948

Billie Lou Humphreys, General Staff Nurse, \$190 per month with laundry, December 1, 1948

P. Marjorie Jantz, Admitting Clerk, \$135 per month, December 18, 1948

Mary Jones, Nurse Aide, \$90 per month December 13, 1948; \$100 per month January, 1949; \$110 per month June, 1949

Ruby L. Lones, Nurse Aide, \$90 per month December 8, 1948; \$100 per month January; \$110 per month June, 1949

Clarice C. Lovelace, Medical Technologist, \$25 per month, December 1, 1948

Dovell Marzett, Janitor, \$100 per month, December 3, 1948

Ernest William McGehee, Dairyman, Southern Oklahoma Hospital, \$80 per month, December 1, 1948

Lucille L. McGehee, Waitress, Southern Oklahoma Hospital, \$50 per month, December 1, 1948

Clifford G. Morgan, Clerk, \$125 per month, December 11, 1948

Bruce C. Morris, Dish Machine Operator, \$75 per month with meals and laundry of uniforms, December 1, 1948

Laura Newton, Nurse Aide, \$90 per month, November 27, 1948; \$100 January; \$110 per month June, 1949

Mary Leota Peterson, Nurse Aide, \$90 per month November 24, 1948; \$100 per month January, 1949; \$110 per month June, 1949

Elsie B. Piat, Laundress, \$90 per month, December 9, 1948

Flossie Puryear, TrayGirl, \$70 per month with meals and laundry of uniforms, December 1, 1948

Carolyn Stafford, Library Assistant part time, \$50 per month, December 1, 1948

L. Roy Stewart, Assistant Laundryman, \$125 per month, December 16, 1948

Eula Lee Taylor, Nurse Aide, \$100 per month December 1, 1948, February, 1949, \$110

Sallye Webster, Library Assistant part time, \$50 per month December 15, 1948

Stella Graygo West, General Staff Nurse, \$190 per month with laundry, Dec 1, 1948