

Women's Separates: Blouses, Evening Tops, Jackets, Skirts & Sweaters



1960s Emilio Pucci Blouse



1940s Jacket



1960s Sequined Evening Top



1950s-60s Sweater



1950s Burlap Skirt



1950s-60s Sweater

in the
Oklahoma Fashion Museum Collection
at the
University of Central Oklahoma

Compiled and written by Mary Huffman, Coordinator of Grants & Contracts

College of Education & Professional Studies

University of Central Oklahoma, 2019

Forward by Mary Huffman

History of the Collection

In the late 1950s, several prominent Oklahoma City women in fashion-related businesses initiated contacts with The Fashion Group International, Inc. headquartered in New York. As a result, a new regional “Fashion Group, Inc. of Oklahoma City (OKC Fashion Group)” was established in the fall of 1958.

One of the goals of the OKC Fashion Group was to collect garments in order to establish a “designer costume collection” covering several decades and representing significant changes in fashion design. They collected garments and accessories from prominent women in Oklahoma. The collection was to be used by fashion marketing, costume design, drama, art, and history students. The items in the collection range from the late 1800s to the 1970s.

The group began collecting designer garments in 1984. In 1985 Lillian Russell began cataloging each item in a ledger. The ledger was hand written, and each clothing item had a hand written tag on it with some basic information. (A copy of the original acquisition tag is included on the following pages.)

In 1989, the OKC Fashion Group disbanded and donated the entire collection to Central State University, which is now called the University of Central Oklahoma (UCO). Even though the group disbanded, the ledger was maintained through July of 1994. The collection consists of over 800 items of clothing, 300+ hats, 151 pairs of shoes, 12 pairs of boots, 50+ purses, some jewelry and gloves.

The collection was kept in storage for many years and used occasionally for class instruction in the fashion marketing program. In 2014, I began the task of inventorying the collection, documenting details of each item and photographing some of the items and details. Most of the photos in this catalog were taken by fashion photography students.

It is now 2019 and everything has been photographed, documented and inventoried. It is my sincere hope that others will find this information helpful. Whether you’re interested in fashion design, fashion history, women’s history, the history of Oklahoma City, or are researching the people in the societal world, there is something in this catalog for many to use.

Catalog Arrangement

This catalog contains 63 separates that are in the collection. It includes 23 blouses, 4 sequined evening tops, 8 skirts, 6 jackets, and 22 sweaters. Thirty two (32) designers are represented including Emilio Pucci, Adele Simpson, Oleg Cassini, and others. A list of the designers represented and the page(s) their designs can be found on are included for reference.

Many of the blouses and sweaters did not have any acquisition tags but were simply found in the collection. It is unknown where they came from, or who donated them. A list of the known donors is included with this catalog.

The following pages are arranged by category, then by decade, and then numerically by the acquisition numbers. As each person donated these garments, each item was given a unique number. If they gave more than one item at a time, then a letter (a, b, c, d, etc.) was added to the numeric numbers. As you look through this catalog there are some items which have the same number but letters at the end. You can get a “feel” for the particular style a person liked by looking at the items they donated.

One question I’m often asked is who donated the clothes. Thanks to Lillian Russell, who originally collected the garments and logged each item in the collection with the donor names, we have a list of the donors and the date they donated the items. Over the years I’ve researched the donor names to find out more about their lives and the social circles they were involved with. I’ve included a list of the donors of the items in this catalog with a little bit of information I have been able to find out about them, or their spouses. It’s interesting to look back in time and not only see the items the women wore, but also to learn more about them as a person.

Many of the women were in the fashion business in some capacity, and many of the husbands were in the oil & gas industries, banking, law firms, fashion, and many other professions. Included in this book is a list of the women who donated their clothes as well as their husband’s name (if known) and a brief description. It’s kind of a “Who’s Who” in Oklahoma City during this time period.

On each page is included the condition, designer (if known), the acquisition # and the size. Also included, if available, are pictures of any tags found inside the garment, and pictures of the original inventory tag that Lillian Russell wrote. In some instances I’ve included detail pictures of designs, fabric, or damage. A description of each item is also included. The information for the descriptions came from Lillian Russell’s inventory tag, my physical assessment of each item, research on the designers, fabrics, and terms used when describing clothing. I hope this information is helpful for others.

The photographs were taken in the photography studio in the Mass Communications Building on the UCO campus under the direction of Mr. Jesse Miller, a professor of fashion photography. The student photographers were Kelsey Smith and Zach Hunter. These students were hired through a U.S. Department of Education grant called “Student Transformative Learning Record” (STLR) for this project.

Whether you’re researching particular designers, styles, people, or fashion history, I hope the information in this catalog will be of interest to others in various professions.

Mary Huffman. Coordinator of Grants & Contracts
College of Education & Professional Studies
University of Central Oklahoma
Edmond, Oklahoma
September 2019

Table of Contents

Blouses	Page
<hr/>	
<i>1900-1919</i>	
159.89.10.C	Black taffeta blouse..... 2
<i>1930s</i>	
31.5.4.D	Black crepe blouse with multicolored sequins..... 4
<i>1940s</i>	
111.87.13.K	Cream blouse with beaded bab collar by Mademoiselle..... 6
<i>1960s</i>	
134.88.3.C	Silk multicolored striped blouse by Liz Claiborne..... 8
201.17.23	Silk blouse with blue flowers by Emilio Pucci..... 9
201.17.24	Pink scalloped patterned blouse by Emilio Pucci..... 10
201.17.25	Aqua blue blouse with scarf..... 11
201.17.26	Bright pink blouse with a scarf by Lee Herman..... 12
201.17.27	Brown silk blouse by Country Clothes..... 13
201.17.35	Red blouse by Nardis sport..... 14
201.17.41	Silk blouse with pink cats by Emilio Pucci..... 15
<i>1970s</i>	
196.94.5.B	Red silk blouse designed by Ollie..... 17
196.94.5.C	Multicolored silk blouse by Francesca of Damon..... 18
198.94.1.B	Black print wool blouse by Francesca Sterlacci..... 19
201.17.22	Flowered silk blouse by Oleg Cassini..... 20
201.17.28	White blouse with scarf/tie by Contessa Monique..... 21
201.17.29	Brown silk blouse by J. Tiktiner..... 22
201.17.30	Pink blouse with string tie..... 23
201.17.31	Blue polyester shirt by Catalina..... 24
201.17.32	Bright pink silk blouse by Steven Barry II..... 25
201.17.33	Pink blouse by Ciao Sport Ltd..... 26
201.17.34	Light blue blouse by Jaeger..... 27
201.17.42	Wool blouse with pink & coral flowers by Emilio Pucci..... 28
<hr/>	
Sequined Evening Tops	Page
<i>1940s</i>	
189.93.15.H	Black silk evening blouse/jacket with gold sequins & beads..... 30
<i>1950s</i>	
183.91.12.L	Red & black beaded evening jacket..... 31
<i>1960s</i>	
74.86.21.S	Green sequined evening tope from Hong Kong Imports..... 32
37.85.5.C	Blue satin evening tank with sequins, beads & pearls..... 33

Jackets **Page**

<i>1940s</i>	53.86.4.A	Rose beige wool with black sequin designs by Edith Small.....	35
<i>1960s</i>	85.86.1.A	Orange, black & yellow jacket by Adele Simpson.....	36
	98.86.22.V	Multicolored striped raw silk jacket by Mr. Blackwell.....	37
	177.91.1	Yellow wool knit jacket by Norman Norell.....	38
	201.17.36	Textured polyester pink jacket by Butte Knit.....	39
<i>1970s</i>	200.95.3.A	Red suede jacket by Roth-LeCover.....	40

Skirts **Page**

<i>1920s</i>	19.85.6.F	Black wool skirt with attached chemise.....	42
<i>1950s</i>	13.85.25.U	Yellow satin skirt with gold brocade by Tina Leser.....	43
	154.89.4.B	Gold burlap skirt with brown trim & mink balls.....	44
<i>1960s</i>	75.86.16.N	Long black silk crepe evening skirt.....	45
	130.88.3.C	Blue & silver full circle skirt.....	46
<i>1970s</i>	19.85.6.C	Long white silk skirt with black & gold designs by ZiZi Int'l.....	47
	71.86.7.G	Long black velvet skirt by Oscar de la Renta.....	48
	196.94.5.D	Green flowered cotton wrap skirt by Design Thai.....	49

Sweaters **Page**

<i>1940s</i>	201.16.19	Off-white sweater, Goldworm Original.....	51
<i>1950s</i>	201.16.12	Light brown sweater with white trim by Rosanna.....	53
	204.16.17	Pink cashmere sweater.....	54
	204.16.20	Short cream sweater fashions by Emerett Jackman.....	55
	204.16.22	Grey cashmere sweater made in Austria.....	56
<i>1950s-60s</i>			
	119.87.6.F.1	White sweater with sequins made in Hong Kong.....	58
	119.87.6.F.2	Black sweater with white bows.....	59
	119.87.6.3	Beige sweater set with appliqued birds & flowers.....	60
	201.17.37	Pink knit sweater.....	61
	204.16.9	Yellow cashmere sweater set.....	62
	204.16.10	Dark grey cashmere sweater.....	63
	204.16.11	Black beaded sweater made in Hong Kong.....	64
	201.16.13	Cream wool cardigan with embroidered flowers.....	65
	204.16.16	Pink turtleneck sweater.....	66
<i>1960s</i>	13.85.25.X	Pink knit cardigan by James Kenrob.....	68
	201.16.11	Cream sweater designed by Lee Herman, California.....	69
	204.16.1	Off-white sweater with mauve & blue trim.....	70
	204.16.18	Navy blue cashmere sweater by Wolsey Ltd.....	71
	204.16.19	Black wool crop top sweater.....	72

Sweaters (con't)		Page
<i>1970s</i>	102.87.3	Two-piece navy blue sweater set with beige trim..... 74
	106.94.5.A	Purple hand knit cardigan..... 75
	102.87.3.C	Black sweater with ruffles..... 76

List of Designers

List of Donors

Blouses

Oklahoma Fashion Museum Collection

1900-1919 Black Taffeta Blouse

Category: Blouse

Acquisition #159.89.10.C

Condition: Good

Estimated size: 8

Designer: Unknown

Donated by: Mr. Haywood Vaughan (Ardmore, Okla.), Oct. 16, 1989

Description: A light weight black taffeta blouse with applied lace, a high neck, and fitted sleeves. The front of bodice has tucking, and it has the "pigeon breast" shape. The blouse buttons up the back.



1930s Blouse

Oklahoma Fashion Museum Collection

1930s Black Crepe Blouse with Multicolored Sequins

Category: Blouse

Acquisition #31.85.4.D

Condition: Fair

Estimated size: 4

Designer: Unknown

Donated by: Wanda Britton (wife of John O. Britton), Oct. 10, 1985

Description: This black crepe blouse was made in Paris and is covered with multi-colored sequins in flower and leaf designs. There is a zipper in the back, but it needs to be repaired or replaced. The side seams also need repair.



Sequin detail

Obj# 31.85.4-D
Size: 4
Des: unknown
Made in Paris
Don: Mrs John Brittain
Des: 30s
Item: Black crepe blouse w/ multi colored sequin flowers over all the blouse. Needs a skirt.

Description
Black crepe blouse w/ multi colored flowers in sequins covering entire blouse. The blouse needs a skirt & to be sewn up on the sides.

1940s Blouse

Oklahoma Fashion Museum Collection

1940s Cream Blouse with Beaded Bab Collar by Mademoiselle

Category: Blouse

Acquisition #111.87.13.K

Condition: Poor

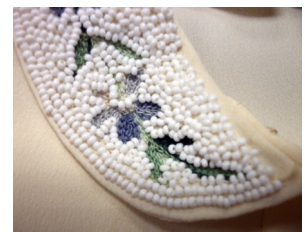
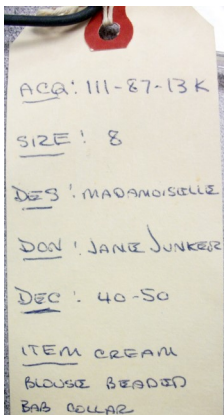
Estimated size: 8

Designer: Mademoiselle G., New York

Store Tag: None

Donated by: Jane Asher Junker (wife of Canon Curtis W.V. Junker),

Description: A cream blouse with a white beaded bab collar. It has shoulder pads, short sleeves, 5 white buttons in the back with 1 snap and 2 snaps at the neck. The short blouse is fitted and has 16 covered buttons for decoration in front. The fabric has red stains on it. Donated by Aline Hilt Asher (Jane's mother), Sept.5, 1987.



Collar detail

1960s Blouses

Oklahoma Fashion Museum Collection

1960s Silk Multicolored Striped Blouse by Liz Claiborne

Category: Blouse

Acquisition #134.88.3.C

Condition: Excellent

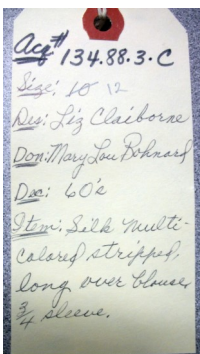
Size: 12

Designer: Liz Claiborne

Store Tag: None

Donated by: Mary Lou Bohnard, May 30, 1988

Description: A 100% silk multicolored striped blouse in red, purple, teal, white & brown stripes. It was made in Hong Kong and has 3/4 length sleeves, a round neck with no collar, and a rounded hem on the sides.



Oklahoma Fashion Museum Collection

1960s Silk Blouse with Blue Flowers by Emilio Pucci

Category: Blouse

Acquisition # 201.17.23

Condition: Very Good

Estimated size: 8-10

Designer tag: Emilio Pucci, Florence—Italy; made in Italy; 100% pure silk

Description: A long sleeved blouse with blue and grey watercolor type flower design with pink stems on a cream background. It has a collar, 5 buttons in the front, and 1 button on each cuff. A corded belt with 8 attached abstract stone like pieces accessorize this blouse.

201.17.23

Blouse: Long sleeves with
blue, grey & pink flower designs
100% silk
Designer: Emilio Pucci
Florence, Italy



Oklahoma Fashion Museum Collection

1960s Pink Scalloped Patterned Blouse by Emilio Pucci

Category: Blouse

Acquisition # 201.17.24

Condition: Excellent

Size: 16

Designer tag: Emilio Pucci, Florence—Italy; made in Italy; 100% Pure Silk

Care tag: To be dry cleaned; Lavare a Secco

Description: A long sleeved blouse with pink scallop patterns with multi shade pink centers on a white background. It has 5 white buttons in the front, a collar, and 1 button on each cuff.

201.17.24
Long sleeved blouse with
pink scallop designs
Designer tag: Emilio Pucci
Florence, Italy
Size: 16 - "to be dry cleaned"



Oklahoma Fashion Museum Collection

1960s Aqua Blue Blouse with Scarf

Category: Blouse
Condition: Very Good
Designer: Unknown

Acquisition # 201.17.25
Estimated size: 8
Store Tag: None

Description: An aqua blue long sleeved blouse with an attached scarf/tie. It has a front opening with 6 round white buttons and a flat button at the bottom. The sleeves have small cuffs with 1 button. There is a stain on one sleeve and the last button needs to be replaced.

201.17.25

Long sleeved aqua blue blouse with attached scarf/tie - white pearl buttons down front and on sleeves



Oklahoma Fashion Museum Collection

1960s Bright Pink Blouse with a Scarf by Lee Herman

Category: Blouse

Acquisition # 201.17.26

Condition: Very Good

Estimated size: 8-10

Designer tag: Designed by Lee Herman, California

Description: A bright pink, long sleeved blouse with an attached tie/scarf. It has a front opening with 5 pink buttons and a snap at the neck. The sleeves have wide cuffs for cufflinks with double buttonholes. The blouse has small slits at the hem on each side.

201.17.26

Bright pink long sleeved blouse
with attached tie/scarf
Designer tag:
Lee Herman, California



Oklahoma Fashion Museum Collection

1960s Brown Silk Blouse by Country Clothes

Category: Blouse

Acquisition # 201.17.27

Condition: Very Good

Size: 10

Inside tag: Country Clothes, Pure Silk, 10

Description: A brown silk long sleeved blouse with a notched collar, front opening with 5 grey buttons, and turned up cuffs with 1 button. It has a rounded hem with side slits and a back yoke.



Oklahoma Fashion Museum Collection

1960s Red Blouse by Nardis Sport

Category: Blouse

Acquisition # 201.17.35

Condition: Good

Estimated size: 12-14

Inside tag: Nardis Sport

Description: A dressy red blouse with long sleeves, 7 covered buttons in front with a snap at the neck, a fitted waist, and sleeve cuffs with 1 button. It has an unusual collar with two rows of fabric stitched together and draping down the front. There are pleats at the shoulder and in the back. There's a stain on the collar and some fraying. One button is missing.

201.17.35

Long sleeved dressy red blouse,
front open with 8 covered buttons
(1 missing), snap @ neck
Inside tag: Nardis Sport



Oklahoma Fashion Museum Collection

1960s Silk Blouse with Pink Cats by Emilio Pucci

Category: Blouse

Acquisition # 201.17.41

Condition: Very Good

Size 16

Designer Tag: Emilio Pucci, Florence-Italy, made in Italy, 100% pure silk

Care tag: To be dry cleaned—lavare a secco

Description: A long sleeved silk blouse with pink cat design over a cream background. It has a notched collar, cuffs with one button, and a front opening with 4 white buttons. The cat designs are of 2 cats which overlap with a green design.



1970s Blouses

Oklahoma Fashion Museum Collection Late 1970s Red Silk Blouse designed by Ollie

Category: Blouse
 Condition: Very Good
 Designer: Ollie by Mui
 Donated by: Mary Lou Bernard Darling (wife of Charles Darling), July 1, 1994
 Acquisition #196.94.5.B
 Size: 12
 Store Tag: None

Description: A 100% red silk bat wing shirt with a jewel neckline and long sleeves. It has 6 small white round buttons on the front and the cuffs have 1 button each. The back is gathered at the yoke, and the sleeves are gathered. There are a few small stains on the front. This shirt was made in Hong Kong, and it is "dry clean only".



*Acq# 196.94.5.B.
 Size: 12
 Des: Made in Hong Kong
 Des: Mary Lou Darling
 Des: Late 70's
 Des: Red silk
 Bat wing silk
 shirt, jewel
 neckline*

Oklahoma Fashion Museum Collection

1970s Multicolored Silk Blouse by Francesca of Damon for Starlington

Category: Blouse Acquisition #196.94.5.C
Condition: Very Good Size: 12
Designer: Francesca of Damon for Starlington Store tag: None
Donated by: Mary Lou Bernard Darling (wife of Charles Darling), July 1, 1994

Description: A long sleeved, 100% silk blouse made in Hong Kong. The front is brown at the top and on the sleeves, with a purple band beneath the bust line, and red beneath. The back is red, and the back of the sleeves are brown. The shoulders and sleeves have an emerald green and blue strip. The cuffs and collar have red banding. This shirt has some slight fabric stains., and it should be dry cleaned only. Content tag: 100% silk.



Acq # 196.94.5.C
Size: 12
Des: By Damon
Don: Mary Lou Darling
Dec: 70s
Item: Long sleeved,
color blocking silk
shirt/100% Emerald
& royal stripe from
the sleeve, collar, necktie
& red banding

Francesca
DAMON
FOR
STARLINGTON
100% SILK
DRY CLEAN ONLY 12
MADE IN HONG KONG

Oklahoma Fashion Museum Collection

1970s Black Print Wool Blouse by Francesca Sterlacci

Category: Blouse

Acquisition #198.94.1.B

Condition: Excellent

Estimated size: 10

Designer: Francesca Sterlacci

Store Tag: None

Donated by: Mary Lou Bohnard Darling (wife of Charles Darling), Dec. 5, 1994

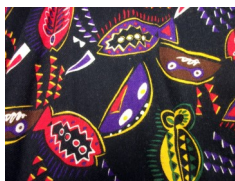
Description: A black, multi-colored print wool blouse with long sleeves. It has 9 black square front buttons and 3 pockets: 1 pocket on the breast and 2 pockets on the front. The abstract designs are in bright multi-colors.



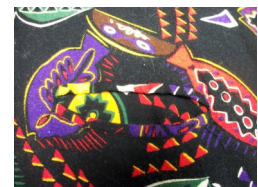
francesca sterlacci



Acq# 198.94.1
Size: 10
By: Francesca Sterlacci
Don: Mary Lou Darling
Dec: 1970's
Stem: "Picasso"
Black, multi-colored
front wool blouse
Long sleeves - could
be worn as a jacket



Fabric detail



Breast pocket

Oklahoma Fashion Museum Collection

1970s-80s Flowered Silk Blouse by Oleg Cassini

Category: Blouse

Acquisition #201.17.22

Condition: Excellent

Size: 10

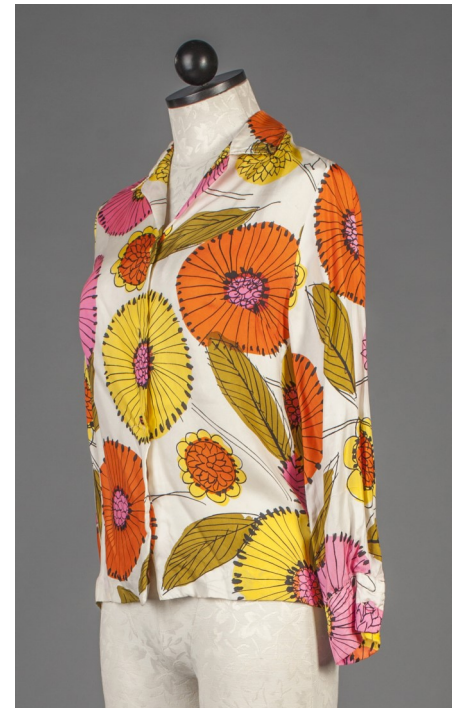
Designer: Oleg Cassini

Care Tag: Dry Clean Only

Description: An "all silk" blouse with very large orange, pink and yellow flowers on a white background. It has long sleeves with cuffs with one button, 4 covered buttons down the front, and a collar.

201.17.22

Long sleeved blouse with large orange, pink & yellow flowers, green leaves
Designer: Oleg Cassini
size: 10



Oklahoma Fashion Museum Collection

1970s White Blouse with Scarf/Tie by Contessa Monique

Category: Blouse

Acquisition # 201.17.28

Condition: Very Good

Size: 6

Designer Tag: Contessa Monique by Florence Alper

Description: A dressy white blouse with long sleeves and a wide, attached scarf. It has 6 covered buttons in front with a snap at the neck, and 2 buttons on each cuff. The scarf could be worn in several different ways. One buttonhole on the left sleeve is ragged.



Oklahoma Fashion Museum Collection

1970s Brown Silk Blouse by J. Tiktiner

Category: Blouse

Acquisition # 201.17.29

Condition: Very Good

Size: 10 / Taille 42

Designer Tag: J. Tiktiner; cote d'azur—Nice, made in France

Description: A shiny brown silk blouse with 6 brown buttons down the front, a small collar, and long sleeves with 2 button cuffs. It has a thin tie that fits through a loop at the back of the neck. An inside care tag (not shown here) reads: Dry clean only, nettoyage a sec, trocknen reinigen, pulire a secco.

201.17.29

Long sleeved shiny brown blouse
with matching tie
Designer: J. Tiktiner
Size: 10 - made in France
Dry clean only



Oklahoma Fashion Museum Collection

1970s Pink Blouse with String Tie

Category: Blouse

Acquisition #201.17.30

Condition: Excellent

Estimated size: 6-8

Designer: Unknown

Donated by: Found in the collection

Description: A long sleeved pink blouse with a rounded collar, a string tie, and cuffs on the sleeves with 1 button. It opens with 7 pink buttons down the front.



Oklahoma Fashion Museum Collection

1970s Blue Polyester Shirt by Catalina

Category: Blouse

Acquisition # 201.17.31

Condition: Very Good

Size: 10

Inside tag: Catalina; made in Taiwan R.O.C.; over for care; RN16580; 100% polyester, 10

Care tag: Hand or machine wash in lukewarm water. Dry using very low temperatures and remove immediately when dry. Use very cool iron if desired. Do not bleach. Do not soak.

Description: A light blue polyester blouse with a matching tie. It has long sleeves with small cuffs with 1 button on each cuff. It's gathered at the front of the shoulders and at the yoke back. The short opening in front has 2 blue buttons below the neck, and 1 button with loop at the neck. The blouse can be worn with or without the scarf.



Oklahoma Fashion Museum Collection

1970s Bright Pink Silk Blouse by Steven Barry II

Category: Blouse

Acquisition # 201.17.32

Condition: Poor, fabric discoloration

Estimated size: 2-4

Designer Tag: Steven Barry II the Silk Company

Content & Care Tag: 100% Silk; RN 55893; Dry Clean Only; Made in Philippines

Description: A long sleeved, bright pink silk blouse. It's fitted at the waist, has long sleeves with 1 button, a small collar with a tab and button at the neck, and the hem in back is rounded. The front opening has 6 pink buttons. The fabric is discolored.



Oklahoma Fashion Museum Collection

1970s Pink Blouse by Ciao Sport Ltd.

Category: Blouse

Acquisition # 201.17.33

Condition: Excellent

Size: 6

Designer Tag: ciao Sport Ltd.; made in the Crown Colony of Hong Kong; Size 6

Description: A shiny, pink long sleeved blouse. It has a front opening with 5 pink buttons, a pointed collar, and long sleeves with cuffs and 1 button. An inside care tag (not shown here) reads: hand wash separately in tepid water using mild soap or synthetic detergent, don't wring or twist, dry flat, iron with cool iron only.

Owned by:
Ellen E. Burns

Donated by:
Libby Burns

May 23, 1985



Oklahoma Fashion Museum Collection

1970s Light Blue Blouse by Jaeger

Category: Blouse

Acquisition #201.17.34

Condition: Very Good

Size: 14

Designer tag: Jaeger, London, New York, Paris, Milan

Care tag: Machine wash separately, warm gentle, tumble dry low, no chlorine bleach, cool iron

Description: A long sleeved light blue blouse by Jaeger. It has a pointed collar, turned up cuffs for cuffs, a rounded hemline, and a front opening with 6 white buttons. The back has a pleat all the way down to the hem.



Oklahoma Fashion Museum Collection

1970s Wool Blouse with Pink & Coral Flowers by Emilio Pucci

Category: Blouse

Acquisition # 201.17.42

Condition: Excellent

Size: 16

Designer Tag: Emilio Pucci, Florence-Italy; made in Italy; 100% Wool

Description: A long sleeved wool blouse with pink and coral flowers on a cream colored background. It has 5 front buttons and 1 button on each cuff, a collar, and side slits at the hem.



Sequined Evening Tops

Oklahoma Fashion Museum Collection

1940s Black Silk Evening Blouse/Jacket with Gold Sequins & Beads

Category: Blouse or Jacket

Acquisition #189.93.15.H

Condition: Excellent

Estimated size: 6

Designer: unknown

Donated by: Ruth Frazier (wife of Jay Frazier), July 7, 1993

Description: A short black silk blouse with gold sequins and bead designs. It has short sleeves, no collar, and a zipper opening in front. This could also be worn as a jacket..



Front views



Back view



Acq # 189.93.15.H
Size: 6
Des: unknown
Don: Ruth Frazier
Des: 40's
Item: short black
silk blouse w/
gold sequins & bead
designs / short
sleeves / no collar

Oklahoma Fashion Museum Collection

1950s-60s Red & Black Beaded Evening Jacket

Category: Beaded Evening Jacket

Acquisition #183.91.12.L

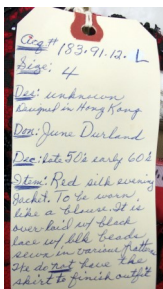
Condition: Excellent

Estimated size: 4-6

Designer: Designed in Hong Kong for The Compass Rose, St. Thomas/St. Croix, Virgin Islands

Donated by: June Durland (wife of Jack Raymond Durland), Aug. 20, 1991

Description: A short jacket in red silk with black netting and beads. It's fully lined, has 3/4 long sleeves, a round collar, and a hook and eye front closure. There is black piping around the edges and collar.



Oklahoma Fashion Museum Collection

1960s Blue Satin Evening Tank with Sequins, Beads & Pearls

Category: Sleeveless sequined top

Acquisition #37.85.5.C

Condition: Excellent

Estimated size: 6-8

Designer: unknown

Store tag: none

Donated by: Marjorie Dewar (wife of Dr. James P. Dewar), Nov. 13, 1985

Description: A blue satin tank with blue beads and iridescent sequins in flower designs. The bottom has 5 rows of vertical blue beads with pearls. The top is lined, has a round neck, and has a metal zipper in the back.



Beading detail

Acq. # 37.85.5.C
Size: 8
Des. unknown
Don: Marjorie Dewar
(Mrs. James)
Dec: 1960s
Item: Blue satin tank
w/ blue beads + sequins
4 rows of blue beads
w/ pearls on bottom

Oklahoma Fashion Museum Collection

1960s Green Sequined Evening Top from Hong Kong Imports

Category: Sequin Top

Acquisition #74.86.21.S

Condition: Excellent

Estimated size: 8

Designer: Hong Kong Imports

Store tag: none

Donated by: Ann Linn, July 6, 1986

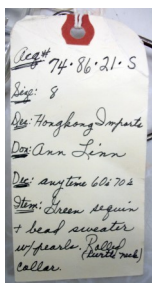
Description: A sleeveless evening sweater top covered with green sequins in various shades in fish scale designs with small pearls hanging down from vertical green beads. It has a zipper in the back and a rolled turtleneck collar.



Back view of collar



Sequin and bead detail



Jackets

Oklahoma Fashion Museum Collection

1940s Rose Beige Wool with Black Sequin Design by Edith Small

Category: Jacket

Acquisition #53.86.4.A

Condition: Fair

Estimated size: 8

Designer: Edith Small

Date: 1947

Donated by: Peggy Sanders (wife of Millard W. Sanders), Jan. 20, 1985

Description: Rose beige jacket wool jacket with black beading and dates to 1947. It's the type of jacket what was worn in the movies. Beading on the left side shoulder and across the chest. The jacket opens in front and closes with a hook and eye at the waist and snaps on the front. It has several stains on the fabric and the inside lining of a sleeve needs repair.



Staining on fabric

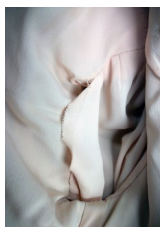


Front opening



Beading detail

Acq# 53.86.4-A
Size: 8
Des: Edith Small
Don: Peggy Sanders
Dec: 1947
Item: Rose beige
Jacket w/ black beading
The type worn in movies
He need to find a
black shirt to wear
with it.



Sleeve lining needing repair



Oklahoma Fashion Museum Collection

1960s Orange, Black & Yellow Jacket by Adele Simpson

Category: Jacket

Acquisition #85.86.1.A

Condition: Excellent

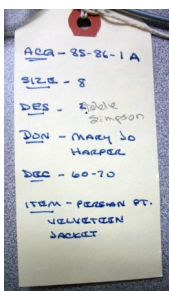
Estimated size:

Designer: Adele Simpson

Store Tag: Balliet's, Okla. City

Donated by: Mary Jo Harper, Nov. 15, 1986

Description: A long sleeved Persian patterned velveteen jacket in orange, black, yellow and brown. It has black lining and a fold down collar.



Oklahoma Fashion Museum Collection

1960s-70s Multicolored Striped Raw Silk Jacket by Mr. Blackwell

Category: Jacket

Acquisition #98.86.22.V

Condition: Excellent

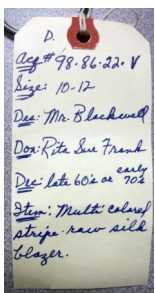
Estimated size: 10-12

Designer: Mr. Blackwell

Store Tag: None

Donated by: Rita Sue Frank (wife of Joe Frank), Dec. 22, 1986

Description: A multi-colored, striped raw silk blazer in blue, brown, purple and green stripes. It has long sleeves, front slit pockets, a notched collar, and a front open with 2 buttons. It's lined in purple fabric and has shoulder pads.



Oklahoma Fashion Museum Collection

1960s Yellow Wool Knit Jacket by Norman Norell

Category: Jacket

Acquisition #177.91.1

Condition: Excellent

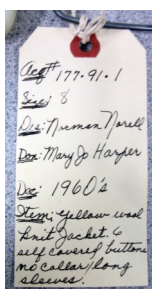
Estimated size: 8

Designer: Norman Norell

Store Tag: Balliet's, Okla. City

Donated by: Mary Jo Harper (wife of David Harper), Jan. 27, 1991

Description: A bright yellow wool knit jacket. It has 6 self covered buttons with bound buttonholes down the front and patch pockets. The long sleeves have cuffs with 2 covered buttons on each sleeve.



Oklahoma Fashion Museum Collection

1960s Textured Polyester Pink Jacket by Butte Knit

Category: Jacket

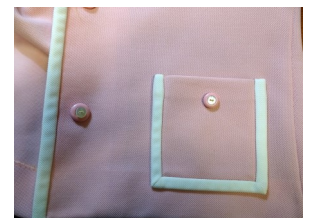
Acquisition #201.17.36

Condition: Excellent

Estimated size: 10-12

Inside tag: Butte Knit, 100% Textured Polyester, WPL S442

Description: A textured pink polyester jacket with white trim on the ends of the long sleeves, on the front 2 pockets, down the front and around the notched collar. It has 3 pink and white buttons on the front opening, 1 button on each pocket, and 2 buttons on the back of the sleeves. The jacket is unlined.



Oklahoma Fashion Museum Collection

1970s Red Suede Jacket by Roth-Le Cover

Category: Jacket

Acquisition #200.95.3.A

Condition: Very Good

Size: 12

Designer: Roth-Le Cover

Store Tag: None

Donated by: Mary Lou Bohnard Darling, Dec. 5, 1994

Description: A red suede jacket made out of "skinner ultra suede fabric". It has long sleeves, a high collar, 3 gold buttons on the front and 3 on the sleeves. The jacket has red lining, 1 breast pocket and 2 front pockets. There are very slight perspiration stains, and some fabric stains on the front.



Acq # 200.95.3.A
 Size: 12
 Des: Roth Le Cover
 Don: Mary Lou Darling
 Dec: 1970s
 Item: 1 red suede jacket
 with gold buttons
 ultra suede.

Skirts

Oklahoma Fashion Museum Collection

1920s Wool Skirt with attached Chemise

Category: Skirt with chemise

Acquisition #19.85.6.F

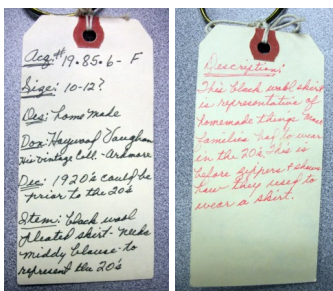
Condition: Fair

Estimated size: 10-12

Designer: Unknown

Donated by: Mr. Haywood Vaughn (Ardmore, Okla.), August 1, 1985

Description: A long black, wool, pleated skirt representative of homemade things most families had to wear in the 1920s. This is before zippers. The white cotton knit "chemise" top is sleeveless and attaches to the skirt with 7 white buttons. The skirt opens in the back. There are some moth holes on the top and stains. This item is stored in an archival wardrobe box.



Oklahoma Fashion Museum Collection

Early 1950s Yellow Satin Skirt with Gold Brocade by Tina Leser

Category: Skirt

Acquisition #13.85.25.U

Condition: Fair

Estimated size: 10-12

Designer: Tina Leser Original

Store Tag: None

Owned by: Ellen E. Burns

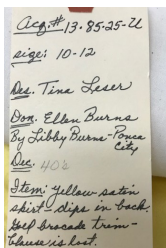
Description: A yellow satin skirt which dips in the back. It has 1.5" wide gold brocade around the waist and down the back on two sides. The skirt is 32.5" long and the waist is 28". The waist inside is reinforced with yellow grosgrain ribbon and it has a 7" yellow metal zipper. The braid has some damage, and the satin has some stiff backing attached. Donated by Libby Burns (May 23, 1985)



Detail at the waist in back



Inside view of skirt @ hemline



Brocade detail

Oklahoma Fashion Museum Collection

1950s Gold Burlap Skirt with Brown Trim & Mink Balls

Category: Skirt

Acquisition #154.89.4.B

Condition: Good

Estimated size: 10-12

Designer: Dorothy Dickerson

Store Tag: None?

Donated by: Ann Weaver, Feb. 7, 1989

Description: A full skirt made of burlap fabric which was sprayed gold. It has brown velvet ribbon at the waist, and several vertical brown velvet ribbons with mink balls at the bottom of the trim are attached at the waist. The skirt has a back zipper.



Need a pic of the inventory card and more description—check the back opening for more detail—get skirt measurements

Length:

Waist:

Is there a designer tag?

Oklahoma Fashion Museum Collection

1960s-70s Long Black Silk Crepe Evening Skirt

Category: Long skirt Acquisition #75.86.16.N

Condition: Excellent Estimated size: 6

Designer: Travilla Store tag: none

Donated by: Arden Barrett (wife of Dr. Paul Arthur Barrett), July 10, 1986

Description: A long black silk crepe evening skirt with a slit to the knee in front. It has a zipper with a hook and eye closer in the back.



Acq# 75.86.16.N
 Size: 6
 Des: Travilla
 Don: Arden Barrett
 Des:
 Item: Long black
 silk crepe evening
 skirt - slit to knee
 in front.
 Separate skirt to be
 worn w/ sold blouse

Oklahoma Fashion Museum Collection

1960s Blue & Silver Full Circle Skirt

Category: Skirt

Acquisition #130.88.3.C

Condition: Very Good

Estimated size: 6

Designer: Unknown

Store Tag: None

Donated by: Betty Jeanne Ford Sanders (wife of Millard W. Sanders), 5/22/1988

Description: A blue and silver full circle skirt, 28" long, and with a 26" waist. It has a metal zipper and 3 hooks and eyes on the waistband. There are 3 horizontal printed patterns toward the bottom of the skirt. There are some stains on the waistband.



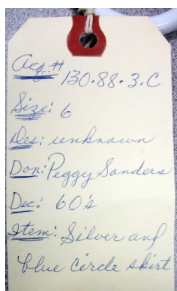
Waistband stains



Outside fabric detail



Fabric underside



Oklahoma Fashion Museum Collection

1970s Long White Silk Skirt with Black & Gold Designs by ZiZi Int'l.

Category: Skirt

Acquisition #19.85.6.C

Condition: Good

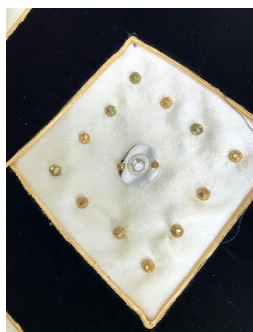
Estimated size: 8

Designer: ZiZi International, Ltd.

Store Tag: None

Donated by: Mr. Haywood Vaughan, August 1, 1985 (Ardmore, Okla.)

Description: A long white silk skirt with 2" wide black velvet at the waistline with gold trim. It's 43" long with a 26" waist. It has white lining and hanging loops inside. The bottom has a 7.5" black velvet band and is decorated with gold tone studs, rhinestones and silver circles. There are black velvet triangular designs on the skirt with more studs, rhinestones & silver circles. The skirt has a back zipper.



Oklahoma Fashion Museum Collection

1970s Long Black Velvet Skirt by Oscar de la Renta

Category: Evening Skirt

Acquisition #71.86.7.G

Condition: Excellent

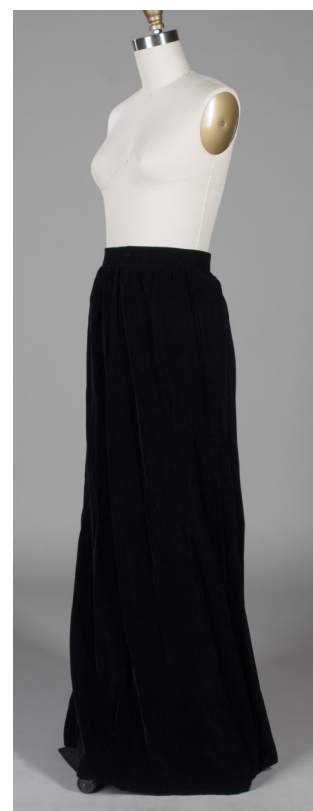
Estimated size: 10

Designer: Oscar de la Renta

Store Tag: None

Donated by: Kathryn Greenwood, July 1, 1986

Description: A long black velvet skirt with seam pockets and a side zipper. It has a long sheer slip with an elastic waist and hanging loops. The waist is 33" wide, and the skirt is 45" long.



Oklahoma Fashion Museum Collection

1970s Green Flowered Cotton Wrap Skirt by Design Thai

Category: Skirt Acquisition #196.94.5.D
Condition: Excellent Size: 12
Designer: Design Thai, Bangkok, hand tailored in Thailand
Donated by: Mary Lou Bernard Darling, July 1, 1994

Description: A 100% cotton hand screened, mid-calf, wrap-around skirt. The fabric has a green background and blue and plum colored flowers, and dragon fruit designs. The waist has a corded tie belt. The inside tag says to "hand wash".



Acc # 196.94.5.D
Size: 12
Des: Made in Bangkok
Don: Mary Lou Darling
Dec: 1970s
Thai Mid calf skirt
in cotton. Green
background w/
blue & plum pattern
summer wrap skirt
Wrap Skirt



Sweater

1940

Oklahoma Fashion Museum Collection

1940s Off-White Sweater, Goldworm Original

Category: Sweater

Acquisition # 201.16.19

Condition: Excellent

Estimated size: 10-12

Designer: Goldworm Original

Store Tag: None

Donated by: Unknown

Description: A short, off-white sweater with long sleeves, 2 front pockets and a shawl collar. The collar in the back is long and triangular



Sweaters

1950s

Oklahoma Fashion Museum Collection

1950s Light Brown Sweater with White Trim by Rosanna

Category: Sweater

Acquisition # 201.16.12

Condition: Excellent

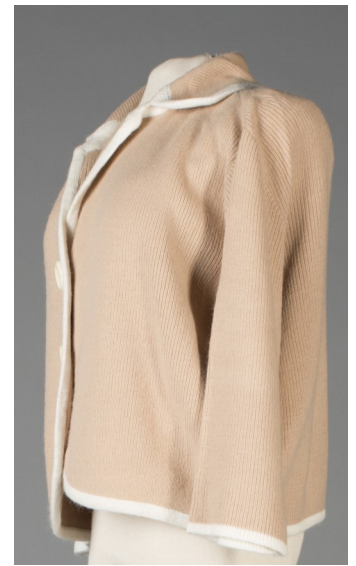
Estimated size: 10

Designer: Fashions by Rosanna

Store Tag: None

Donated by: Unknown, found in the collection

Description: A light brown sweater with white trim down the front, around the collar edge and on the bottom of the long sleeves. It has 3 large white buttons on the front and a short waist. It is 100% super turbo, DuPont Orlon acrylic.



Oklahoma Fashion Museum Collection

1950s Pink Cashmere Sweater

Category: Sweater

Acquisition # S204.16.17

Condition: Good

Estimated size: 6-8

Inside tag: Made in Austria Expressly for Sakowitz by Bernhard Altman, 100% Cashmere

Donated by: Unknown

Description: This pink cashmere sweater has long sleeves, a collar, and 9 small white buttons down the front. There is a minor stain on the front and slight perspiration stains.



Oklahoma Fashion Museum Collection

1950s Short Cream Sweater fashioned by Emerett Jackman

Category: Sweater

Acquisition # S204.16.20

Condition: Good

Estimated size: 6-8

Inside tag: Fashioned by Emerett Jackman

Donated by: Unknown

Description: This cream colored, button down short sweater has long sleeves, 10 buttons down the front, and a scalloped bottom with 2 beaded white flowers in front and 1 in back. The sleeve cuffs have white velvet trim with a bow. There is also white velvet ribbon trim down the front, around the neck and around the bottom. The sweater has raglan sleeves, and there are some minor stains on the front.

S204.17.20

*Cream waist length sweater
fashioned by Emerett Jackman
long sleeves with velvet trim
and flower designs*



Flower detail



Cuff detail



Bottom detail

Oklahoma Fashion Museum Collection

1950s Grey Cashmere Sweater Made in Austria

Category: Sweater

Acquisition # S204.16.22

Condition: Excellent

Estimated size: 6-8

Inside tag: Kerr's, 100% Pure Cashmere, Made in Austria, WPL 7528

Donated by: Unknown

Description: A grey button up cashmere sweater with 3/4 length raglan sleeves and 9 grey buttons down the front. It has no collar, and has 2 extra buttons on the inside.

S204.17.22

*Grey cashmere sweater
100% pure cashmere
made in Austria*



Sweaters

1950s~60s

Oklahoma Fashion Museum Collection

1950s-60s White Sweater with Sequins made in Hong Kong

Acquisition # S204.16.6

Original Acquisition # 119.87.6.F.1

Condition: Good

Estimated size: 6-8

Inside tag: Hand decorated by Dragon House of Hong Kong

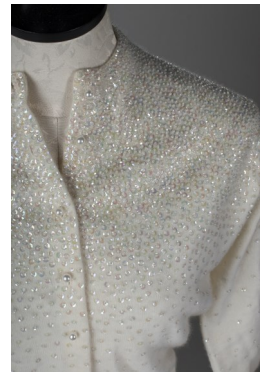
Donated by: Mary Lou Bohnard, November 11, 1987

Description: A waist length white sweater with 3/4 length raglan sleeves, no collar, and 8 small round white buttons down the front. It has iridescent sequins all over with more toward the top and on the sleeve ends. It's made of 70% lambs wool, 20% angora rabbit, and 10% nylon and has white lining. Some of the sequins are loose and a neck button is loose.

Donated by
Mary Lou Bohnard
Nov. 11, 1987



Sequins on sleeve



Oklahoma Fashion Museum Collection

1950s-60s Black Sweater with White Bows

Acquisition # S204.16.7

Original Acquisition # 119.87.6.F.2

Condition: Very Good

Estimated size: 6-8

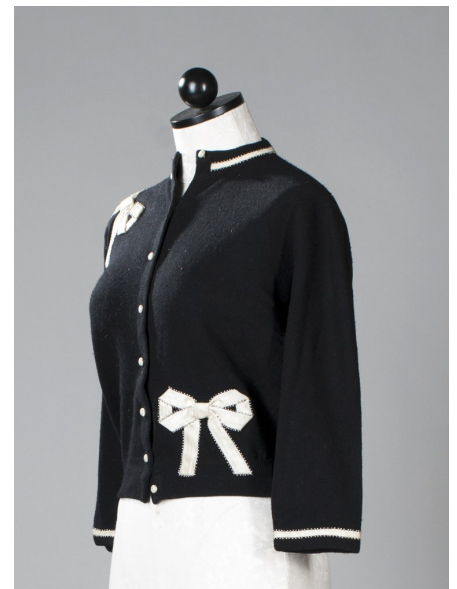
Designer: Hand made by Emerett Jackman

Store Tag: None

Donated by: Mary Lou Bohnard, November 11, 1987

Description: A waist length black sweater with 2 white satin bows attached on the front and 1 white satin bow on the back. It has 3/4 length sleeves and 8 white satin covered buttons down the front. There is no collar, but there is white satin trim with beads at the neck and on the ends of the sleeves.

Donated by Mary Lou Bohnard
Nov. 11, 1987



Oklahoma Fashion Museum Collection

1950s-60s Beige Sweater Set with Appliqued Birds & Flowers

Acquisition # S204.16.8. A & B

Original Acquisition # 119.87.6.3

Condition: Good

Estimated size: 6-89

Inside tag: Hand made by Emerett Jackson

Store Tag: None

Donated by: Mary Lou Bohnard , November 11, 1987

Description: A beige sweater set with a short sleeved and a long sleeved sweater. The long sleeved sweater has brown velvet ribbon trim around the neck, down the front and on the sleeves. It has hand appliqued birds and leaves on the front and back and 8 small brown buttons in front. The short sleeve sweater is a pullover and plain with no collar.



Oklahoma Fashion Museum Collection

1950s-60s Pink Knit Sweater

Category: Sweater
Condition: Excellent
Designer: Unknown
Donated by: Unknown

Acquisition #201.17.37

Estimated size: 6-8

Description: A long sleeved pink knit sweater. It has a round neck and 9 buttons down the front.



Oklahoma Fashion Museum Collection

1950s-60s Yellow Cashmere Sweater Set

Acquisition # S204.16.9.A & B

Condition: Very Good

Estimated size: 6-8

Designer: Made in Scotland expressly for Herd & Walker Ltd., London W.I. by Bryant of Alloa, 100% pure cashmere

Donated by: Mary Lou Bohnard, November 11, 1987

Description: This sweater set has a short sleeved pullover sweater with a round neck, and a long sleeved button up sweater. The button up sweater has 8 green buttons in front and green trim around the neck, down the front, and on the bottom of the sleeves.



S204.16.9A
[orig. acq. #119.87.6.F.4]
Yellow Sweater with green
buttons and trim
made in Scotland for Herd &
Walker Ltd. by Bryant of Alloa



Donated by
Mary Lou Bohnard
Nov. 11, 1987



Oklahoma Fashion Museum Collection

1950s-60s Dark Grey Cashmere Sweater

Category: Sweater

Acquisition # S204.16.10

Condition: Good

Estimated size: 6-8

Designer: Unknown

Store Tag: None

Donated by: Mary Lou Bohnard, November 11, 1987

Description: A dark grey 100% pure cashmere pullover sweater. It has short sleeves and a round neck. It has one moth hole and slight pilling at the bottom.



Oklahoma Fashion Museum Collection

1950s-60s Black Beaded Sweater Made in Hong Kong

Acquisition # S204.16.11

Original acquisition #188.93.4.B

Condition: Good, some loose sequins

Estimated size: 6-8

Inside tag: Gene Shelley's Boutique International, California, made in Hong Kong

Content tag: 70% lamb's wool, 20% angora rabbit hair, 10% nylon

Donated by: Margaret Berry Blair, April 20, 1993 (wife of H. Henley Blair)

Description: A short black sweater with long sleeves, a scalloped waist, and black lining. It has 8 round black buttons down the front. The sweater is heavily beaded with black beads around the neck, down the front, at the waist, and on the sleeve ends. There are black beaded flower designs on the front and back.

S204.16.11
[orig. Acq. #188.93.4.B]
Black sequined sweater - 1950s
Gene Shelley's Boutique, California
Made in Hong Kong
70% lambs wool, 20% angora, 10% nylon



Beading detail



Oklahoma Fashion Museum Collection

1950s-60s Cream Wool Cardigan with Embroidered Flowers

Category: Sweater

Acquisition # S204.16.13

Condition: Very good, slight pillage

Size: Medium

Inside tags: Cyn Les, RN 27267, 100% wool, Made in British Hong Kong

Donated by: Unknown

Description: A cream colored cardigan with crewel embroidered pink, yellow, purple and red flowers with green stems & leaves on front & back. It has 3/4 length raglan sleeves, white lining, and opens in front with 6 hooks and eyes.

S204.16.13
Cream sweater cardigan with
crewel embroidered flowers
100% wool, made in
British Hong Kong
Inside tag: Cyn Les size: Medium



Oklahoma Fashion Museum Collection

1950s-60s Pink Turtleneck Sweater

Category: Sweater

Acquisition # S204.16.16

Condition: Good, some pilling

Size: Medium

Inside tag: PW Imports in British Hong Kong, WPL 11486

Donated by: Unknown

Description: A pink, pullover turtleneck sweater imported from British Hong Kong. It's 20% angora, 10% nylon and 70% lambs wool. It has a high neck, raglan sleeves, and wide cuffs that turn up. The care tag reads: For best results dry cleaning recommended or hand wash in lukewarm water, lay flat to dry and reshape.

S204.16.16
Pink turtleneck sweater with
raglan sleeves, turned up cuffs /
PW Imports, made in British Hong Kong
20% angora, 10% nylon
20% lambs wool - size: Medium



Sweaters

1960s

Oklahoma Fashion Museum Collection

1960s Pink Knit Cardigan by James Kenrob

Category: Sweater

Acquisition #13.85.25.X

Condition: Very Good

Estimated size: 8

Designer: James Kenrob by Dalton

Donated by: Libby Burns, May 23, 1985

Owned by: Ellen E. Burns

Description: A pink knit cardigan with long sleeves. The bottom of the sleeves and of the sweater are ribbed. It has a round neck and a front opening with 9 taupe buttons in front.

13.85.25.X
Long sleeved pink sweater
100% Trevira Polyester
Designer tag:
James Kenrob by Dalton



Oklahoma Fashion Museum Collection

1960s-70s Cream Sweater designed by Lee Herman, California

Category: Sweater

Acquisition # 201.16.11

Condition: Good

Estimated size: 8-10

Designer: Designed by Lee Herman, CA

Store Tag: none

Donated by: Unknown, found in the collection

Description: A short cream colored sweater with silver threads in the yarn. It has 3/4 length sleeves, a mandarin collar, and four 1" silver tone buttons with rhinestones in front. Some of the silver threads are loose and 2 rhinestones are missing on the buttons.



Oklahoma Fashion Museum Collection

1960s Off-White Sweater with Mauve & Blue Trim

Acquisition # S204.16.1

Condition: Good

Designer: Offspring

Donated by: Libby Burns for Ellen E. Burns, May 23, 1985

Original acquisition #13.85.25.W

Size: Large

Store Tag: None

Description: This sweater was made in Korea and is 90% wool and 10% nylon, dry clean only. It's off-white and has mauve and blue knitted trim along the edges, around the 2 front pockets and on the ends of the long raglan sleeves. It has 4 large white buttons in front and a collar.



S204.16.1
[orig. Acq. #13.85.25.W]
Off-white sweater with mauve
and blue knitted edges and 2 pockets
90% wool, 10% nylon
made in Korea RN 46421
size: Large



Donated by Libby Burns,
for Ellen E. Burns
May 23, 1985

Sweater is from the 1960s

DRY CLEAN
ONLY

Oklahoma Fashion Museum Collection

1960s Navy Blue Cashmere Sweater by Wolsey

Category: Sweater

Acquisition # S204.16.18

Condition: Very Good

Estimated size: 6-8

Inside tag: Cashmere by Wolsey, 100% Chinese cashmere, made in Scotland by Wolsey Ltd.

Donated by: Unknown

Description: A navy blue, pullover sweater with short raglan sleeves and a round neck.



Oklahoma Fashion Museum Collection

1960s Black Wool Crop Top Sweater

Category: Sweater

Acquisition # S204.16.19

Condition: Very Good

Estimated size: 6-8

Inside tag: Majestic Specialties, Inc.

Donated by: Unknown

Description: A short, black crop top sweater with a boat neck, short sleeves, and 4 black buttons on the front opening. It's "100% all wool".



The logo for Majestic Specialties, Inc. features a crown icon above the word "Majestic" in a bold, sans-serif font, with "Specialties" in a smaller, cursive font below it.



Sweaters

1970s

Oklahoma Fashion Museum Collection

1970s Two Piece Navy Blue Sweater Set with Beige Trim

Acquisition # S204.16.2.A & B

Original Acquisition # 102.87.3.A & B

Condition: Excellent

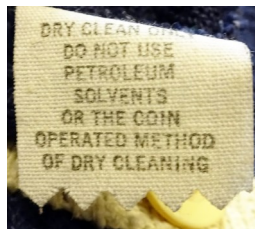
Sizes: Tank, Medium / Sweater, Large

Designer: Kasper for J.L. Sport Ltd.

Union Tag: ILGWU

Donated by: Mary Lou Bohnard, April 20, 1987

Description: This sweater set has a sleeveless tank with a V neck, and a long sleeved sweater with 2 front pockets. The tank has knitted beige trim around the neckline and the armholes. The sweater has this trim on the front open, around the neckline, on the top of the pockets and on the sleeve ends. A knit beige belt goes with the set.



Oklahoma Fashion Museum Collection

1970s Purple Hand Knit Cardigan

Acquisition # S204.16.12

Original Acquisition #106.94.5.A

Condition: Excellent

Estimated size: 10

Designer: Unknown

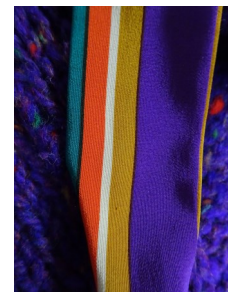
Store Tag: None

Donated by: Mary Lou Darling, July 1, 1994

Description: A purple, hand knit cardigan with multi-colored flecks. It has long sleeves, and no collar. A purple, red, aqua, brown, and white striped silk tie is woven is around the neck.

S204.16.12

[orig. Acq. #196.94.5.A]
Hand knit purple long sleeved
cardigan with striped silk tie



Silk tie

Donated by Mary Lou Darling
July 1, 1994

Oklahoma Fashion Museum Collection

1970s Black Sweater with Ruffles

Acquisition # S204.16.14

Original acquisition #102.87.3.C

Condition: Very Good

Estimated size: 6-8

Inside tag: Currants by JERi-Jo, New York

Donated by: Mary Lou Bohnard, April 20, 1987

Description: A pullover black sweater with double ruffles around the sweetheart neckline and partway down the front. The long sleeves also have double ruffles at the cuffs.

S204.16.14
[orig. acq. #102.87.3.C]
1970s black knit sweater/blouse
ruffled neck and sleeves
inside tag: Currants by Jeri-Jo



List of Designers

Designer Name	Page
Adele Simpson	36
Butte Knit	39
Catalina	24
Ciao Sport Ltd.	26
Contessa Monique	21
Country Clothes	13
Design Thai	49
Edith Small	35
Emilio Pucci	9, 10, 15, 28
Emerett Jackman	55
Francesca Damon for Starington	18
Francesca Sterlacci	19
Goldworm	51
J. Tiktiner	22
James Kenrob	68
Lee Herman	12, 69
Liz Clairborne	8
Mademoiselle	6
Mr. Blackwell	37
Nardis Sport	14
Norman Norell	38
Oleg Cassini	20
Ollie	17
Oscar de la Renta	48
Rosanna	53
Roth Le-Cover	40
Steven Barry II	25
Tina Leser	43
Wolsey Ltd.	71
ZiZi Int'l	47

List of Donors

Alspaugh, Ann Simmons (aka Ann Linn, Ann Cox)

Ann was born in Duncan, Okla., she was a civic leader, and was inducted into the Oklahoma Hall of Fame in 1997. Her family was in the oil and gas business. Her father, Louis Bascom (L.B.) Simmons, founded the Rocket Oil Company of Duncan, and the Rock Island Refining Companies. Ann married and divorced 3 men: 1) Paul Anthony Andres, an insurance company executive, 2) James "Jimmy" Paul Linn, a prominent Okla. City lawyer, and 3) Marcus Lafayette Cox, an internal medicine doctor in Okla. City.

Barrett, Arden Jayne (wife of Dr. Paul Arthur Barrett)

She lives in Nichols Hills in Okla. City. Her husband was a family physician in Bethany, Okla.

Blair, Margaret Berry (wife of H. Henley Blair, previously married to Wilson D. Hand)

She was active in community service, helped organize archives at the Heritage Association, served as a docent at the Cowboy Hall of Fame, presided as president of Presbyterian Hospital Auxiliary, and volunteered at the Oklahoma Museum of Art. During WWII she was an aircraft communicator under the Civil Aeronautics Administration (now the FAA).

Bohnard, Mary Lou

She was a couture buyer for John A. Brown's upscale women's wear department.

Britton, Wanda (wife of John Britton)

She used to work for the Little Giant Pump Corporation and was a member of the Putnam City Baptist Church.

Burns, Ellen Evans (donated by Libby Burns)

She was active in the arts and music and is the author several plays, including "Finer'n Fiddle Dust," which was based on the early days of Oklahoma after the opening of the Cherokee Strip

Darling, Mary Lou Bohnard (wife of Charles Darling)

She was a fashion buy at Higbee's in Cleveland, Kaufman's in Pittsburg, and Gimbels in Philadelphia. In 1973 she moved to Okla. City and became the buyer of John A. Brown's upscale Women's Wear Dept.

Dewar, Marjorie (wife of James P Dewar, M.D.)

She was the first president of the Women's Auxiliary to the University Hospitals and also served as the President of Church Women united. She was one of the first board members of the Foundation for Senior Citizens which operates the Superbia Retirement Village. She donated the crocheted shawl and purse that belonged to her grandmother, Harriett Teller Felthausen.

Durland, June Kathryn Cain (wife of Jack Raymond Durland)

Her father founded the Cain's Coffee Company. Her husband was a lawyer. She and her husband owned an art gallery in Nichols Hills in Okla. City.

Frank, Rita Sue (wife of Joe Frank)

She and her husband owned Joe Frank, Inc., a men's clothing store in Nichols Hills Plaza in Okla. City.

Frazier, Ruth Frances Logan (wife of Jay Frazier)

She was a homemaker, and was invited to go to Washington, D.C. as one of 100 delegates to advise builders, manufacturers and designers on what homemakers wanted. Her husband was a prominent insurance man in Okla. City. He was in the army air corp and was an electrical engineer.

Greenwood, Kathryn M.

She established the Center for Apparel Marketing & Merchandising.

Harper, Mary Jo Pool (wife of David Harper)

She worked at Balliet's in Okla. City.

Junker, Jane Asher (wife of Canon Curtis W.V. Junker)

Her husband was a canon in the Episcopal Church and she was the daughter of Mrs. Aline Hilt Asher.

Sanders, Peggy Jeanne Ford (wife of Millard W. Sanders)

Her husband was in the air conditioning business for homes and buildings. In 1966 he became the Thermo-Kind dealer for the eastern part of the state.

Vaughan, Mr. Haywood (from Ardmore, OK)

Mr. Vaughn was very involved with Ardmore Little Theatre in Ardmore, Okla. He was the head costumer of the Ardmore Theater Group and an authority on vintage clothes. He donated many items to the collection, both antique and vintage.

Weaver, Ann - *no information currently available*