

**Purses, Handbags,
Clutches and a Reticule
in the
Oklahoma Fashion Museum
Collection**



**at the
University of Central
Oklahoma**

Compiled by Mary Huffman, Coordinator of Grants & Contracts

College of Education & Professional Studies

University of Central Oklahoma, 2019

Purses, Handbags, Clutches and a Reticule in the Oklahoma Fashion Museum at the University of Central Oklahoma

Forward by Mary Huffman

History of the Collection

Most of the purses, handbags, and clutches in the Oklahoma Fashion Museum Collection were donated by prominent women in Oklahoma between 1985 and 1995 to the Fashion Group of Oklahoma City, Inc. The collection was then donated to Central State University (now the University of Central Oklahoma (UCO)) in 1989 and is currently housed in the Human Environmental Sciences building on the campus.

In 2018, seventeen purses were added to the collection through donations because they were unique or because they were representative of a particular decade. This included a purse made out of women's hosiery during the WWII era, an 1869 reticule, and an antique purse from 1870-90s. A few of the items in the collection date to the 1920s, but most are from the 1940s to the 1980s era.

The original inventory log did not identify each individual purse in the collection. Individual acquisition numbers were assigned between 2016 and 2018 to each item following the system that was already designed.

Catalog Arrangement

The purses in this catalog are arranged by decade, and then numerically by the acquisition numbers. A contents page is included which lists each bag under the specific decade. If the purse has a matching dress, shoes, or hat, photographs of those items are included on the following pages.

The studio photographs were taken in the photography studio in the Mass Communications Building on the University of Central Oklahoma (UCO) campus under the direction of Dr. Jesse Miller. The student photographers were Kelsey Smith and Zach Hunter. The research on the styles, designers (if known), and the descriptions of the items was performed by a museum studies student, Jessica Rice. These three students were hired through a U.S. Department of Education grant called "Student Transformative Learning Record" for this project.

The entire project was overseen by Mary Huffman, the Coordinator of Grants and Contracts in the College of Education and Professional Studies at UCO. She created this catalog using the photos taken, edited the descriptions written, measured each purse and verified the details.

Acknowledgements

My gratitude to all the people who helped me with this project through many hours and dedication.

First of all, I would like to thank Lillian Russel and the ladies who collected these items through the Fashion Group, Inc. of Oklahoma. Without their diligence and organization this collection would not exist.

My appreciation and thanks to Dr. James Machell, the UCO Dean of the College of Education & Professional Studies, for allowing me time to work with the collection.

Special thanks go to the following people who assisted me with this project:

To Jesse Miller, a professor of fashion photography at UCO. Thank you for supervising the students who took the photographs.

To Kelsey Smith and Zach Hunter, both STLR students who took photographs of the purses in the studio. Thank you for taking the pictures and using your photographic creativity. You did an excellent job.

To Jessica Rice, also a STLR student from the Museum Studies program. Thank you for all the work you did researching the types of purse styles, how to describe them, and for working diligently on the project.

And finally to Elle Skelton, a UCO graduate student who assisted me with the collection initially. She has a real passion for purses and made the work more enjoyable. As I was documenting the individual purses I remember how she made me laugh when we worked together.

Mary Huffman

July 2019

1800s-1900s

- 1869 Red & Gold Reticule with Beads
- Antique black leather coin purse
- 1870-90 Antique multi-colored floral purse

1920s-30s

- Alligator clutch

1930s-40s

- Gold and silver mesh clutch
- Gold mesh clutch

1940s

- White & silver beaded/sequined handbag/clutch
- Brown snakeskin handbag
- Brown purse made of hosiery
- Green leather handbag by Lennox Bags
- Light green straw handbag, made in Italy
- Orange straw handbag, made in Italy

1940s-50s

- Black beaded handbag
- Black beaded clutch or handbag
- Black suede frame bag

1950s

- White leather handbag by Nettie Rosenstein
- Orange satchel
- Gold purse or clutch with rhinestones
- 3-in-1 handbag in red, blue, or black
- Golden beige satchel
- Beaded clutch minaudiere bag by Josef
- Black velvet clutch with a chain and bow
- Coblentz black moire silk evening clutch
- Coblentz black velvet evening clutch
- Coblentz navy blue silk evening clutch
- Orange wicker beach tote
- Black satin handbag with tassel
- Tan fur frame handbag
- Brown rectangular satchel

- Black oval purse with embroidered flowers
- Grey leather handbag
- Brown faux leather handbag
- Two tone brown faux leather handbag

1950s-60s

- Black lizard skin doctor bag
- Silver sequin wristlet with a silver chain
- Gold and silver beaded minaudiere
- Red beaded evening handbag with coin purse
- Koret black wicker handbag
- White faux snakeskin purse with brass accents
- Grey patent leather frame handbag by Ingber
- Black fabric frame bag with silk coin purse
- Navy blue patent leather handbag
- Dark blue beaded evening clutch with coin purse
- Cream satin clutch covered with rhinestones

1960s

- Natural wicker handbag with brass handles
- Black alligator satchel
- Canvas satchel
- Christian Dior shoulder bag
- Gold evening bag
- Roberta di Camerino wine colored frame bag
- Roberta di Camerino wine & blue velvet frame bag
- Pewter leather frame bag with matching shoes
- Tan & black hounds tooth feedbag purse
- Velour brown, gold & beige handbag by Cara
- Beige straw tote with butterflies & flowers

1960s (con't)

- Faux white straw handbag made in Hong Kong
- Beige tote bag with flowers & ladybugs by Claire Fashions

1960s-70

- White fur fold-over purse by Harry Rosenfeld
- Navy blue feed bag style handbag
- Light brown satchel with a watch
- Black satin satchel with a dega ballerina

1970s

- Roberta di Camerino blue velvet bag with red stripes
- Roberta di Camerino red tote bag (has a matching dress)
- Roberta di Camerino wine colored cut velvet handbag
- White beaded handbag with petit-point floral embroidery
- White beaded frame bag with petit-point embroidery

1970s-80s

- Leather sling bag
- Black calf purse
- Black leather "Equitable" handbag

1980s

- Purple leather clutch

1800s
to
Early 1900s

Oklahoma Fashion Museum Collection

1869 Red & Gold Reticule with Beads

Acquisition # P203.18.14

Dimensions: 8" long x 3.75" wide

Condition: Poor

Donor: Kratke Estate

Description: A small woman's reticule in red velvet which is hand made and very worn. It has beaded flower designs on the top and bottom. The middle has 1869 in beads, and the circular bottom has the initials SC. The bottom edge and top have loops of gold beads attached. There is a small "pocket" behind the section that has SC on it. This item was donated by the Kratke Estate in Oklahoma City in the Fall of 2018.



Oklahoma Fashion Museum Collection

Antique Black Leather Coin Purse

Acquisition # P203.18.15

Dimensions: 3" x 3"

Condition: Very Good

Donor: Kratke Estate, 2018

Description: This very small coin purse has a silver hinge with a kiss closure and 2 compartments. The outside and center section are black leather.



Oklahoma Fashion Museum Collection

1870-90 Antique Multi-Colored Floral Silk Purse

Acquisition # P203.18.16

Dimensions: 9" long x 8" wide

Condition: Poor

Donor: Kratke Estate, 2018

Description: This is a handmade silk fabric purse which is attached to a silver hinge and closes with a metal kiss. The hinge is designed on the outside with a windmill and sailboats. The outside fabric is green on the sides, and the center is a multicolored red rose floral pattern. Each side has beads attached to the bottom. The lining is orange silk, and the handle is black velvet with a chain inside. The outside fabric is torn and in poor condition.



Lining



Hinge design detail



Beading detail

1920s
to
1930s

Oklahoma Fashion Museum Collection

1920s-30s Alligator Clutch

Acquisition #P202.16.53

Designer: Unknown

Dimensions: 7" high, 12.5" long, handle is 12" long

Condition: Very Good

Donor: Nina Zapffe (wife of Fred Zapffe), Oct. 1, 1985, was a niece of the owner

Owned by: Thelma Gann (Mrs. W.O. Gann) of San Antonio, Texas

Description: A rust colored clutch made of alligator skin with a matching handle. It was from the estate of the donor's niece. It has one flap with a metal snap. The interior is unlined with 3 open pockets and a center pocket with a zipper. Original acquisition #26.85.2.B.

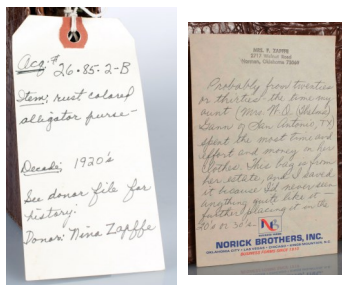
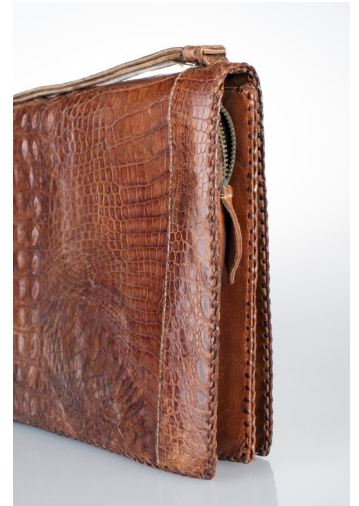
**P202.16.53
1920s-30s
Alligator Bag
Orig. Aq. #26.85.2.B**



**Donated by:
Nina Zapff (niece), Oct. 1, 1985
Owned by: Thelma Gann,
San Antonio, TX**



Inside view with center divider unzipped



Original acquisition tag & donor's note



Small inside pocket is 4" x 2.5"

1930s
to
1940s

Oklahoma Fashion Museum Collection

Late 1930s-40s Gold Mesh Clutch

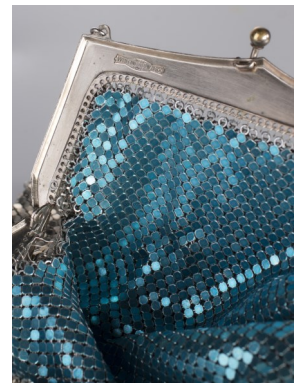
Acquisition # P202.16.7

Manufacturer: Whiting & Davis Co.

Condition: Fair

Dimensions: 6" long x 4 1/2" wide

Description: A gold mesh clutch with a kiss lock closure, and a chain strap which can be tucked inside. The outside has flower style designs, and the interior is a rare light blue color. There is a hole starting to form on the top of the bag where the wire is starting to come undone.



Oklahoma Fashion Museum Collection

Late 1930s-40s Gold Mesh Clutch

Acquisition # P202.16.8 Inside tag: Whiting & Davis Co. Mesh Bags, Trademark Reg. Made in U.S.A.

Dimensions: 6" high x 11" wide (at bottom); rhinestone clasp is 2" wide x 1.5" high

Condition: Good

Description: A gold mesh clutch evening bag with a rhinestone clasp. The interior is lined with gold fabric and it has two pockets on one side and one on the other side. Some of the rhinestones are missing on the clasp, and the interior has some stains.



Rhinestone clasp



1940s

Oklahoma Fashion Museum Collection

1940s White & Silver Beaded and Sequined Handbag/Clutch

Acquisition # P202.16.26

Designer: Unknown

Condition: Poor/Fragile

Dimensions: 6.5" wide @ bottom, x 6" high

Description: A combination handbag and clutch in white silk with silver clear seed beads and white/silver sequins covering the outside. It has a kiss lock and a 13" long silver tone chain handle that can be tucked inside to make it a clutch. The interior has white lining and 1 open pocket. The bottom of the purse has severe stains; there are several snags in the fabric lining; and there are a few some missing sequins.



P202.16.26
Silk Clutch or Handbag
with White & Silver
Beads and Sequins



Oklahoma Fashion Museum Collection

1940s Brown Snakeskin Handbag

Acquisition # P202.16.39

Designer: Unknown

Condition: Very Good

Dimensions: 6.5" wide x 5.25" high

Description: An unusual shaped brown handbag covered with brown snakeskin. It has two 14" long handles, a snap clasp, and brass feet. The interior is lined with a dark brown fabric and there are no pockets inside. There are a few scuff marks on the outside, and one handle shows signs of cracking near the bottom.

P202.16.39
1940s
Brown Snakeskin
Handbag



Oklahoma Fashion Museum Collection

1940s Brown Purse made of Hosiery

Acquisition # P203.18.4

Dimensions: 12" high x 12-15" wide

Donor: Kay J. Jones

Designer:

Condition: Very Good

Owned by: Katherine (Kate) Jones

Description: This handbag is made of repurposed nylon stockings. It's unlined, and has a metal zipper opening on top. The zipper has a pull tie attached to the zipper. The purse has 2 handles made of hose and they're knotted on the sides. Kate Jones and her sister, Bess, made this using stockings that had "runners" in them and could no longer be worn with fashion dignity. They stitched the hoses and wove them into purses.



Oklahoma Fashion Museum Collection

1940s Green Leather Handbag by Lennox Bags

Acquisition # P203.18.6

Inside Label: Lennox Bags

Dimensions: 8.5 at bottom, 7.5" wide at top, 7" high, 3" wide

Condition: Very Good

Donor: Unknown

Description: A small green leather handbag with two 14.5" handles. It has a shiny light brown fabric lining and a center hinge pocket with a compartment on each side of the inside pocket.



Oklahoma Fashion Museum Collection

1940s Light Green Straw Handbag, made in Italy

Acquisition # P203.18.8

Inside tag: Made in Italy, expressly for Simon Inter. Co., New York

Dimensions: 4" wide, 9"-12" wide, handle 24" long

Condition: Pristine

Donor: June Coulter Bryan, Sept. 2018

Description: A light green straw handbag with green stems, leaves, and pink flowers woven onto the top. This purse has green fabric lining, 1 inside pocket with the label shown below. It closes with a straw button and a covered elastic loop.



Oklahoma Fashion Museum Collection

1940s Orange Straw Handbag made in Italy

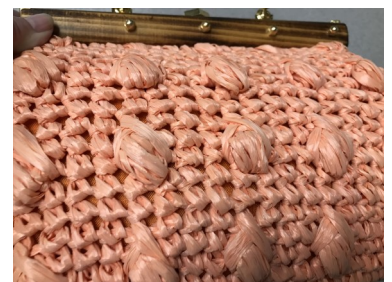
Acquisition # P203.18.9

Dimensions: 11" wide at bottom, 9" wide at top

Condition: Pristine

Donor: June Coulter Bryan, Sept. 2018

Description: An orange straw handbag with bright orange fabric lining. It has a brass hinge, a kiss closure, wood on each side of the hinge and a wooden single handle. The outside has puffed straw designs. The bottom has 4 round feet. An inside tag says "Made in Italy".



1940s
to
1950s

Oklahoma Fashion Museum Collection

1940s-50s Black Beaded Handbag

Acquisition # P202.16.14

Designer: Unknown

Dimensions: 7" high x 10" wide (front @ bottom)

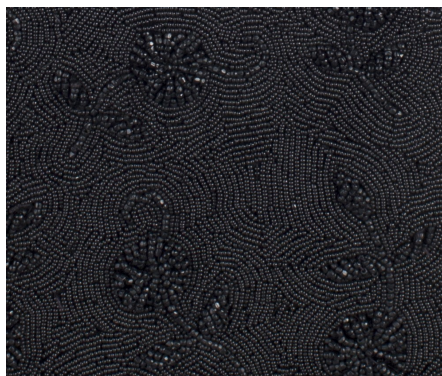
Condition: Poor, Display Only

Description: This purse is covered with black beads in swirling patterns. The opening has a brass hinge opening with flower designs on the edges, and a beaded flap with gold tone twisted metal trim. The handle is round, beaded and 14" long. The interior is lined with black silk and has one open pocket. Some beads are falling off the handle and there are some loose threads.

P202.16.14
Black Beaded Handbag



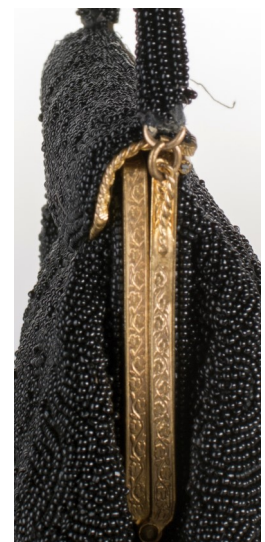
Front view



Beading Design



Back View



Hinge detail

Oklahoma Fashion Museum Collection

1940s-50s Black Beaded Clutch or Handbag

Acquisition # P202.16.29

Designer: Unknown

Condition: Poor / Fragile

Dimensions: 9" wide @ bottom x 6" high

Description: This clutch, or handbag, is covered in black seed beads in a floral pattern. It has a 12" long flat beaded handle and a decorated brass hinged opening with a unique locking mechanism. The interior is lined with black silk and it has 2 open pockets (1 on each side). Some areas are missing beads, there are loose threads, and the fabric is separating from the hinge. The lining is stained.



P202.16.29
Black Beaded Clutch
with Beaded Handle
and Brass Hinge



Bead detail

Lock mechanism, pull to open



Hinge decoration



How To Open:
Pull metal tab that this
tag is attached to until
purse unlocks

Oklahoma Fashion Museum Collection

1940s-50s Black Suede Frame Bag

Acquisition # P202.16.51

Designer: Unknown

Condition: Very Good

Dimensions: 8" wide x 4.5" high / side is 6" wide

Description: This black suede frame bag has two 15.5" long round handles which are attached on the sides, a brass hinged opening, and a brass clasp. The interior is lined with navy blue fabric, has 1 open pocket, and a small hand mirror. The brass hinged opening has some discoloration.

P202.16.51
1940s-50s
Black Suede Frame Bag



1950s

Oklahoma Fashion Museum Collection

1950s White Leather Handbag

Acquisition # P202.16.3

Designer: Nettie Rosenstein

Dimensions: 5.5" high x 8.5" wide (front)

Condition: Excellent

Description: A white leather handbag with a decorative brass handle, clasp, and 4 feet with floral designs. The interior is lined with brown leather and has 2 open side pockets. Above 1 pocket is stamped "Made in Florence, Italy", and the designer's name is above the other pocket. It has a folding matching leather mirror case which has an open pocket, possibly for cards. A small price tag is on the purse that reads: 1428 White Leather 600.



Designer stamp

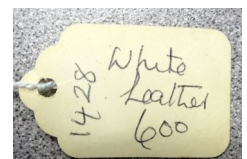


Made in Florence, Italy stamp

P202.16.3
1950s White
Leather Handbag
Made in Florence, Italy



Mirror and card case



Tag on purse

Oklahoma Fashion Museum Collection

1950s Orange Satchel

Acquisition # P202.16.4

Designer: Unknown

Dimensions: 6" high x 8" wide (front) x 3" wide (sides @ bottom)

Condition: Fair

Description: An orange satchel in man made leather. It has 2 U shaped white strips on both sides. The purse has triangular sides and a flat bottom. The handle is 16" long, and the opening and a brass clasp and a hinge. The interior is lined with black fabric and has a divider zipper pocket and an open pocket on one side. Flaws: The handle is stiff and is missing some stitching, and the sides of some of the white trim are loose around the edges.



Oklahoma Fashion Museum Collection

1950s Gold Purse or Clutch with Rhinestones

Acquisition # P202.16.9

Designer: Unknown

Dimensions: 3.5" high x 7.5" wide

Condition: Very Good

Description: A teardrop shaped golden clutch with rhinestones on the outside flap and a 12" long gold tone chain handle. The chain has a unique spring attachment on one end and a hook on the other to help shorten the length to convert the bag into a clutch. Rhinestones cover the outside of the flap. The interior has a fabric lining and a mirror on the inside of the lid. There is one rhinestone missing and some are discolored.



Inside spring attachment to shorten chain



Oklahoma Fashion Museum Collection

1950s 3-in-1 Handbag—Red, Blue, and Black

Acquisition # P202.16.10

Designer: Unknown

Dimensions: 9" wide x 7.5" high

Description: This unique purse is actually 3 colored purses in one: it can be used as a black, red, or navy blue purse. It has an outside cover which can be snapped on, or off—one side is navy and the other side is red. The inside purse is black, has a metal clasp and silver colored hinges. The interior has black fabric lining and one side pocket. The purse has a short plastic handle.



With navy blue exterior



Black Purse inside



With red exterior attached



Outside cover attachment



With the outside cover detached



Side view



Inside view

Oklahoma Fashion Museum Collection

Late 1950s Golden Beige Satchel

Acquisition # P202.16.13

Designer: Milch

Dimensions: 8" high x 14.5" long (front @ bottom) x 6.5" wide (side @ bottom)

Condition: Very Good

Donor: Mary Lou Bohnard Darling, Oklahoma City, Dec. 4, 1995

Description: A golden beige leather satchel with 2 15.5" long leather handles and a brass clasp. It has a hinged top that lifts up and opens wide to expose a red-orange leather interior. Inside is a zipper pocket and 5 other pockets with the Milch brand on one pocket. Inside the satchel are a pair of white Asian style sandals with gold flowers and phoenix patterns on the beige background. The designer of the san-



P202.16.13
1950s
Golden Beige Doctor Bag
Designer: Mitch

Donated by:
Mary Lou Bohnard Darling
December 4, 1995

755-8266
MARY LOU DARLING
11022 N. MAY
OKLA. OK 73120
1 GOLDEN BEIGE SATCHEL
BY MILCH
DATE - 1950's



Oklahoma Fashion Museum Collection

Bags for Josef 1950s Beaded Clutch Minaudiere

Acquisition #P202.16.16

Inside tag: Bags by Josef, hand beaded in Japan

Dimensions: 9" wide @ bottom, 4.6" high

Condition: Good

Description: A minaudiere clutch covered on the outside with blue, purple, and green carnival beads in swirling patterns. It has a silver tone kiss lock closure with a metal frame covered with blue satin fabric. The interior has dark blue satin lining with one inside pocket. The exterior on one side has 2 small discoloration spots.

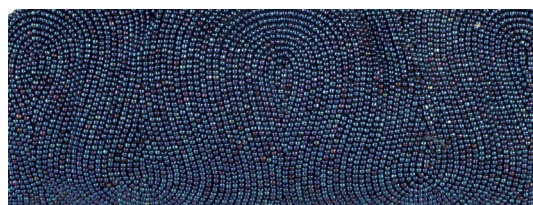
P202.16.16

Beaded Clutch
Minaudiere with
Blue, Purple & Green Beads

Designer: Bags by Josef
Hand beaded in Japan



Inside tag



Beading detail



Oklahoma Fashion Museum Collection

1950s Black Velvet Clutch with a Gold Chain & Black Satin Bow

Acquisition # P202.16.17

Designer: Unknown

Condition: Very Good

Dimensions: 8" high x 8" wide (at bottom)

Description: A black velvet clutch with a 12.5" long gold tone chain handle. One side has a black satin ribbon band with a bow along the bottom. The purse has a gold tone metal hinged opening with a kiss lock clasp. The interior is lined with black satin.

P202.16.17

Black Velvet Clutch with a
Gold Chain & Black Satin Bow
on One Side



Side with bow



Back side



Bow detail on one side



Oklahoma Fashion Museum Collection

1950s Coblentz Black Moire Silk Evening Clutch

Acquisition # P202.16.18

Designer: Coblentz Original

Condition: Fair

Dimensions: 11.25" high x 10.5" wide (on bottom front)

Description: A black evening clutch made of moire silk. It has a brass hinge with a kiss lock opening. The interior is lined with peach colored silk and it has 2 open pockets on one side. There are some tears in the fabric near the hinges and the lining has several small stains.



P202.16.18
Black Moire Silk Evening Bag
with Peach Interior
Coblentz Original



Oklahoma Fashion Museum Collection

1950s Coblentz Black Velvet Evening Clutch

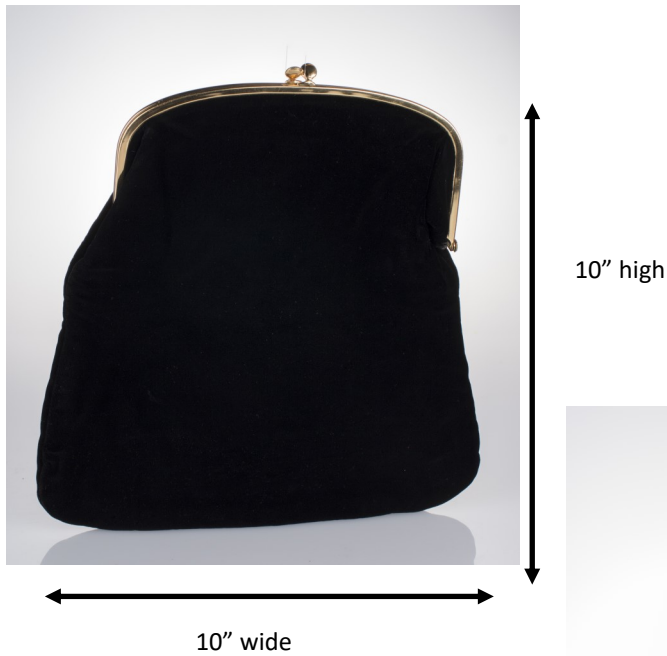
Acquisition # P202.16.19

Designer: Coblentz Original

Condition: Excellent

Dimensions: 10" wide x 10" high

Description: A black velvet evening clutch with a brass hinge opening with a kiss lock. The interior is lined with peach colored silk and it has 3 open pockets on one side. There are some fabric loose near the hinge on one side, and small stains on the interior of the lining.



Oklahoma Fashion Museum Collection

1950s Coblentz Navy Blue Silk Evening Clutch

Acquisition # P202.16.20

Designer: Coblentz Original

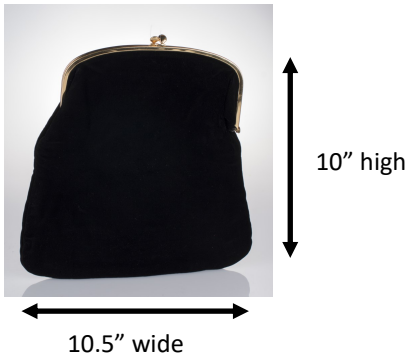
Condition: Very Good

Dimensions: 10.5" inches wide (at bottom) x 10" high

Description: A navy blue silk evening clutch with a brass hinge opening with a kiss lock. The interior is lined with peach colored silk and it has 3 open pockets on one side. The interior lining has some small stains, and the exterior has a small stain on the outside.



P202.16.20
Navy Blue Silk Clutch
with Peach Silk Interior
Coblentz Original



Oklahoma Fashion Museum Collection

1950s Orange Wicker Beach Tote

Acquisition # P202.16.21

Designer: Unknown

Condition: Very Good

Inside tag: Made in the People's Republic of China

Dimensions: 6.5" wide @ bottom x 18" wide @ top x 12.5" high

Description: A large, orange wicker tote bag with floral designs on one side. The interior is lined with tan fabric and does not have any pockets. There are some small stains on the interior, and a snag on the exterior. A great bag for going to the beach!



P202.16.21

Orange Wicker Beach Bag with Flowers

Made in the Republic of China



中华人民共和国制造
Made in The People's Republic of China



Oklahoma Fashion Museum Collection

1950s Black Satin Handbag with Tassel

Acquisition # P202.16.33

Designer: Unknown

Condition: Very Good

Handle:

Description: A black satin evening handbag with a black tassel attached to one side with black rhinestone above it. It has a fabric handle, a hinged opening, and a silver colored clasp. The interior has black satin lining, 2 open pockets and one zipper pocket. There is a small tear in the fabric on one corner, and inside the zipper pocket lining is stained.



Oklahoma Fashion Museum Collection

1950s Tan Fur Frame Bag

Acquisition # P202.16.35

Designer: Unknown

Condition: Excellent

Dimensions: 13" wide x 7.5" wide

Description: A tan fur frame bag with a brass hinged opening and a clasp. It has one a 16.5" long black handle made of suede. The inside is lined with grey suede and has one open pocket. The bottom is made of black suede.



P202.16.35
1950s Tan Fur Frame
Handbag



Oklahoma Fashion Museum Collection

1950s Brown Leather Rectangular Satchel

Acquisition # P202.16.40

Stamped inside: Made in Spain

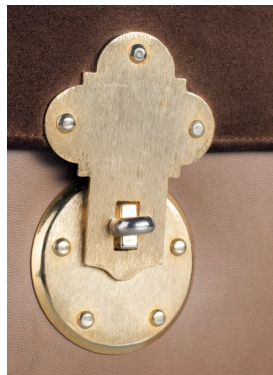
Condition: Excellent

Dimensions: 8" wide x 6" high

Description: This rectangular shaped satchel is made of brown leather with a panel of brown suede on the top. It has a 6.5" handle and a large key shaped brass clasp. The interior is lined with black leather and it has one open pocket. It has some slight stains on the bottom and on a side and there is a slight tear in the leather on the inside in the back left corner.



P202.16.40
1950s Brown Leather
Rectangular Satchel
Made in Spain



Oklahoma Fashion Museum Collection

1950s Black Oval Purse with Embroidered Flowers

Acquisition # P202.16.54 (Original #127.88.3.D)

Designer: Bes Schlauk, Beverly Hills, Calif.

Dimensions: 8" wide x 5.5" wide

Condition: Good

Donated by: May 13, 1988 by Mary Miles Morey (wife of Jimmy (Jack) Morey),

Owned by: Onez Norman Rooney (wife of Patrick Rooney)

Description: This purse is a companion to 2 dresses which are part of the collection (acq. #s 127.88.3B & C). This cylindrical shaped purse has embroidered flowers with black beads on a black background. It opens with a Merita zipper with an attached braided black cord and embroidered ball to pull to open. A loop of fabric is over the center top for a handle. The interior has black silk fabric lining with one side pocket, and a maroon coin purse with a kiss lock. Some bead work is missing and some strings are loose.

P202.16.54

1950s Black Oval Purse
with Embroidered Flowers



This purse goes with
dresses #127.88.3.B & C
Original Acq. # 127.88.3.D



Acq. #127.88.3.B



Acq. #127.88.3.C



Oklahoma Fashion Museum Collection

1950s Grey Leather Handbag

Acquisition # P203.18.1

Designer: Unknown

Dimensions: 9.5" wide, 6.507" high

Condition: Good

Donor: Kay J. Jones

Owned by: Katherine (Kate) Jones

Description: This handbag has a hinged silver tone metal opening with a clasp on top. It has peach fabric lining and 2 pockets inside on each side. One pocket has gold trim on top and is stamped "Sydney, California". The purse has two leather handles. It has some scuff marks.



Inside view and pockets



Oklahoma Fashion Museum Collection

1950s Brown Faux Leather Handbag

Acquisition # P203.18.2

Dimensions: 9" wide x 8.5" high

Donor: Kay J. Jones

Store tag: Town & Country Shoes

Condition: Very Good

Owned by: Katherine (Kate) Jones

Description: A brown faux leather handbag with 2 handles. It has brown fabric lining with one inside pocket. The top folds over and fastens with a brass tone clasp on the side. The handles are attached to brass rings on each side.



Oklahoma Fashion Museum Collection

1950s Two Tone Brown Faux Leather Handbag

Acquisition # P203.18.3

Dimensions: 10.5" wide x 7.25" long

Donor: Kay J. Jones

Designer: Unknown

Condition: Very Good

Owned by: Katherine (Kate) Jones

Description: A two-tone brown faux leather handbag with 1 handle attached to brass hardware. It has a gold tone hinge with a clasp. One side has two tones of brown. The inside is lined with brown faux leather, and has a side slip-in pocket with a zippered pocket on its side. The inside has a pair of beige leather gloves by Kay Fuchs, size 7 1/2.



1950s
to
1960s

Oklahoma Fashion Museum Collection

1950s-60s Black Lizard Skin Doctor Bag

Acquisition # P202.16.2

Designer: Unknown

Dimensions: 6" high x 12.5" wide (front) x 3.5" wide (bottom)

Condition: Excellent

Description: A black framed handbag in lizard skin with a 15.5" long short handle made of the same material. It has a hinged opening, a clasp and a brass pull tab to open. The interior is lined with leather and has one zipper pocket and one open pocket on one side. The bottom has 4 small circular brass feet. There are some small stains inside.



Oklahoma Fashion Museum Collection

1950s-60s Silver Sequin Wristlet with Silver Chain

Acquisition # P202.16.5

Designer: Unknown

Dimensions: 10" wide x 6" high

Condition: Excellent

Description: This silver wristlet is covered with small silver sequins and strings of clear beads with 1/2" wide round silver beads on the ends. It has a hinged opening with a kiss lock with a rhinestone on top. The silver chain handle is 12" long. The interior has one open pocket on the side. There is a small circular stain on the inside lining near the top, above the pocket.



P202.16.5
Silver sequin
wristlet with silver
chain



Beading detail

Oklahoma Fashion Museum Collection

1950s-60s Gold & Silver Beaded Minaudiere

Acquisition # P202.16.6

Designer: Unknown

Dimensions: 3" high x 6.5" wide (front) x 2" wide (side)

Condition: Good

Description: A cylindrical gold and silver beaded minaudiere with a checkerboard pattern all over. It has a post and slot style closure. The interior is lined with white silk and has a "Hand Made in Hong Kong tag inside. Two beads are missing, 1 is damaged, and there is some fabric discoloration on the interior fabric.



Detail of front opening



Oklahoma Fashion Museum Collection

1950s-60s Red Beaded Evening Handbag with Coin Purse

Acquisition # P202.16.25

Inside stamp: Magid, hand beaded in U.S.A.

Condition: Excellent

Donor: Marjory Robertson, Feb. 20, 1988

Dimensions: 8" wide @ the; bottom (6" wide @ the top) x 7" high

Description: This purse is a red satin clutch with red seed beads in flower patterns on one side, and beaded fringe and larger beaded flowers on the bottom. It has a 14" red double handle with brass clasps. The interior is lined with red silk and it has one open pocket. It contains a pocket mirror, and a red coin purse which is attached by a small chain.



P202.16.25
Red Satin Clutch with Beads
and Coin Purse
Designer: Magid



2/20/1988
Lillian Russell
Marjory Robertson

Oklahoma Fashion Museum Collection

1950s-60s Koret Black Wicker Handbag

Acquisition # P202.16.32

Designer stamp inside: Koret

Condition: Very Good

Dimensions: 7" wide x 8" high to top of handles x 4" wide on the sides

Description: A black woven wicker handbag with 2 short brass handles that have a black covering in the middle of the top. The lock is a brass ring that fits over a brass post. The bottom has 4 brass feet. The interior is lined with bright yellow leather. Inside is 1 open pocket that is lined with gold colored leather. There are some slight stains on the inside lining.



P202.16.32
1950s-60s
Black Wicker Handbag
with Brass Handles
Designed by: Koret



Oklahoma Fashion Museum Collection

1950s-60s White Faux Snakeskin Purse with Brass Accents

Acquisition # P202.16.34

Inside label: Milch Bag

Condition: Very good

Dimensions: 10" wide x 9.25" high

Description: White faux snake skin satchel with a spiral shaped brass clasp. It has one 16" long double adjustable handle with brass accents. The top folds over halfway and it has a decorative spiral brass clasp closing. The interior is lined with off-white faux leather and has 2 zipper pockets and 2 open compartments. There are some slight stains inside.

P202.16.34
1950s White Faux Snakeskin
Satchel with Spiral Brass Clasp
"Milch Bag"



Oklahoma Fashion Museum Collection

1950s-60s Grey Patent Leather Frame Handbag by Ingber

Acquisition # P202.16.36

Inside tag: Ingber, the best thing on your arm, Made in U.S.A.

Condition: Excellent

Dimensions: 7.5" wide x 5.5" high (sides are 4.15" wide at the bottom)

Description: A grey patent leather handbag with 11" long handles, a hinged opening and a brass clasp. There is a small pull tab to help open the purse on one side. The inside is lined with light grey fabric and has no pockets. The exterior shows signs of discoloration and the interior lining has some slight stains.



P202.16.36
1950s-60s Grey Patent
Leather Handbag
Inside Tag: Ingber



Oklahoma Fashion Museum Collection

1950s-60s Black Fabric Frame Bag with Silk Coin Purse

Acquisition # P202.16.41

Designer: Lewis

Condition: Fair

Dimensions: 7" wide x 5" high; side is 3" wide at the bottom

Description: A black fabric frame bag with two 13" long handles which are attached to the sides with brass rings, and it opens with a brass clasp on top. The interior is lined with black satin and has 2 two open pockets. A black silk coin purse with a kiss lock is inside. The sides of the purse are severely discolored and look red where the handles are attached.



Oklahoma Fashion Museum Collection

1950s-60s Navy Blue Patent Leather Handbag

Acquisition # P202.16.43

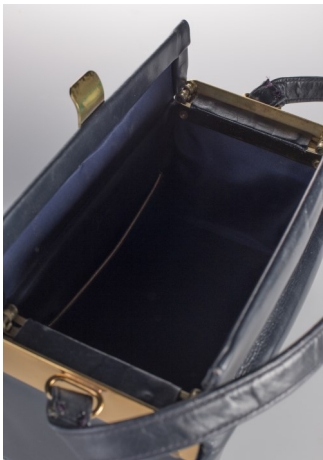
Designer: Bobbie Jerome

Condition: Good

Dimensions: 8" wide x 4" high / 4.5" wide on the sides

Description: This navy blue patent leather handbag is rectangular in shape and has an 18" long handle. It has 2 hinged flaps with a brass pull on top to help open the flaps. Brass plates are attached on the top on each side. The inside is lined with dark blue satin and it has one open pocket. There are several scuff marks and some stains inside.

P202.16.43
1950s-60s
Navy Blue Patent
Leather Handbag



Oklahoma Fashion Museum Collection

1950s-60s Dark Blue Beaded Evening Clutch with Coin Purse

Acquisition # P202.16.44

Designer: Koret Tresor

Condition: Fair

Dimensions: 10.25" wide x 6" high

Description: This evening bag is covered entirely with dark blue seed beads. It has a kiss lock and a dark purple lined interior. One open pocket is lined with mauve silk. It has an attached matching coin purse. The purse is beginning to separate from the hinged from on top.



Oklahoma Fashion Museum Collection

1950s-60s Cream Satin Clutch Covered with Rhinestones

Acquisition # P202.16.45

Designer: Magid

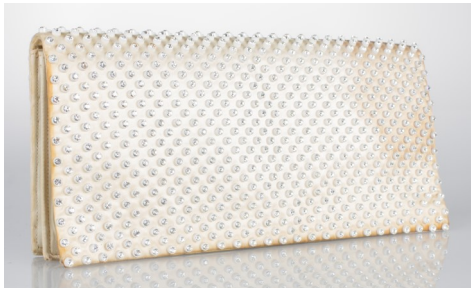
Condition: Fair

Dimensions: 10" wide x 5" high

Description: This cream colored satin evening bag is covered with rhinestones and has a flap with a snap clasp. The interior is lined with cream satin and has one open pocket. Inside is a hand mirror and a peach colored coin purse. There is severe discoloration on the exterior fabric on the flap. The inside lining has numerous small stains.

P202.16.45

**Cream Satin Clutch
covered with Rhinestones**



1960s

Oklahoma Fashion Museum Collection

1960s Natural Wicker Handbag

Acquisition # P202.16.11

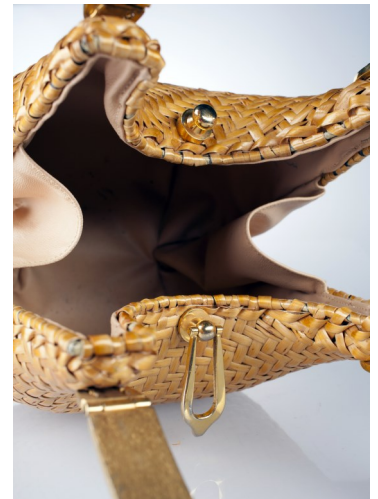
Designer: Koret

Dimensions: 9" high x 8.5" wide (at bottom)

Condition: Excellent

Description: A woven, natural wicker bag with two 9" long short solid brass handles, a brass fastener that flips over on a post to open and close, and 4 small brass feet. The interior is lined with beige leather and it has one open pocket on the side. The lining has several small ink stains.

P202.16.11
1960s
Natural wicker handbag
with brass handles
and feet



Oklahoma Fashion Museum Collection

Purse: 1960s Black Alligator Satchel

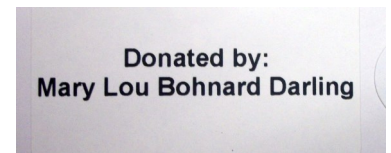
Acquisition # P202.16.12

Designer: Unknown

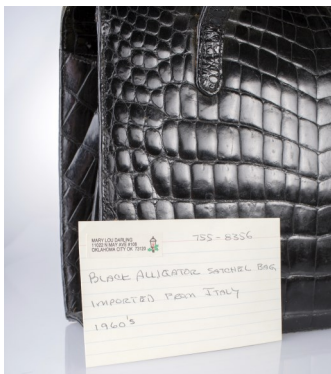
Dimensions: 9" high x 11.5" wide (front) x 4" wide (at bottom of sides)

Donor: Mary Lou Bohnard Darling, Oklahoma City

Description: A black alligator satchel bag imported from Italy. It has 2, 16" long hand straps (one is broken), a hinged pocket with a clasp inside, and 2 open pockets on each side of it. There are four metal "feet" on the bottom. There is a large rip in the interior fabric and several places on the bottom are damaged.



Inside compartments



Owner/Donor Note



Bottom feet and damage



Handle damage

Oklahoma Fashion Museum Collection

1960s Canvas Satchel

Acquisition # P202.16.28

Inside tag: Ganson, Made in Korea

Condition: Fair

Dimensions: 12" wide x 8" high

Description: A beige canvas satchel with brown faux leather trim. It has 2 open pockets on the outside that are lined the faux leather, and 1 zipper pocket lined with brown fabric. The purse closes with a zipper on top, and it has 2 leather 20.5" shoulder straps. On each side of the zipper closure are 2 more zipper pockets with brown fabric lining. The interior is lined with the faux leather and has 2 zipper pockets inside. The canvas is stained on one side, and some of the faux leather is discolored and beginning to crack.



P202.16.28
1960s Tan Canvas Satchel
with Tan Leather Straps
and Accents



Oklahoma Fashion Museum Collection

1960s Christian Dior Shoulder Bag

Acquisition # P202.16.30

Condition: Poor

Purse Dimensions: 9" wide x 7.5" high

Designer: Christian Dior

Donated by: Mary Lou Darling, Oklahoma City

Cosmetic purse: 6.75" wide x 4.5" high

Description: A brown canvas shoulder bag with "Dior" dark brown letters on the outside. It has 35" long brown leather shoulder strap which is broken on one side. A brown leather strap is attached horizontally around the purse and has a gold tone metal "CD" design. The purse is unlined. Inside is a matching cosmetic purse that has a brown leather lining, brown leather around the top, and a top zipper.



Oklahoma Fashion Museum Collection

1960s Gold Evening Bag

Acquisition # P202.16.42

Dimensions: 7" wide x 3.5" high

Donor: Mrs. Harry L. Apple, Oklahoma City

Description: An evening gold clutch or wristlet with a 12

long handle and a flap with a snap clasp. The interior is lined with white silk and has two open pockets.

Designer: Unknown

Condition: Excellent

P202.16.42

**1960s
Gold Evening Bag**



Lillian Russell
Given by
Mrs. Harry L. Apple
6303 Glenhurst Court
1 gold evening bag

Oklahoma Fashion Museum Collection

1960s Roberta de Camerino Wine Colored Frame Bag

Acquisition # P202.16.47

Stamped: Made in Italy by Roberta di Camerino

Condition: Fair

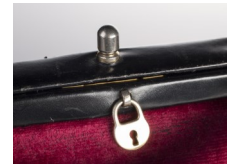
Dimensions: 11" wide x 6" high / 5" wide on the bottom of the sides

Donor: Mary Lou Bohnard, November 24., 1986

Description: A wine colored frame bag with blue and green stripes. A side flap covers 1 pocket and is secured by 2 hole & post locks. It has a 9" long black leather handle, a hinged frame and a clasp. The interior is lined with black leather and has 2 open pockets and 1 zipper pocket. The leather handle is cracking and worn down by repeated rubbing. Both sides under the hinges have felt worn off in spots. The leather lining on the flap is damaged. An orchestra ticket was found inside. The original acquisition number was 92.89.1.

P202.16.47

Roberta de Camerino
Wine Colored Frame Bag



Oklahoma Fashion Museum Collection

1960s Roberta de Camerino Wine and Blue Velvet Frame Bag

Acquisition # P202.16.48

Designer: Roberta di Camerino

Condition: Good

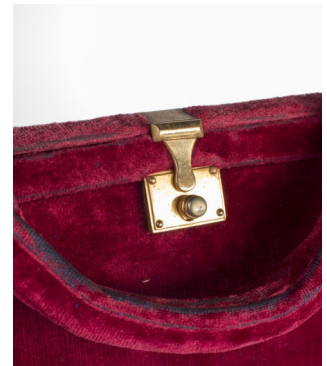
Dimensions: 10.5" wide x 8" high

Description: A wine and blue velvet frame bag with 3 belt buckle designs on both sides. This purse matches dress #78.86.20 as shown below. The purse has a small "R" in a square in the corner on both sides, a 10" long handle, brass hinged frame and a brass clasp. The interior is lined with black leather and has 2 open pockets, 1 zipper pocket, and a small hand mirror. Some areas of the fabric are worn off.



Acq. #78.86.20A Dress

P202.16.48
1960s
Roberta de Camerino
Wine & Blue Velvet
Frame Bag



Oklahoma Fashion Museum Collection

1960s Pewter Leather Frame Bag with Matching Shoes

Acquisition # P202.16.49

Designer Stamp: Bags by Nicholas Reich

Condition: Very Good

Dimensions: 10.5" wide x 8" high

Description: This leather handbag has a 10" long handle, a hinged frame and a clasp. The interior is lined with a light grey silver fabric and has 2 open pockets and 1 zipper pocket. There are some scuff marks and scratches on the exterior and some discoloration on the clasp. There is a pair of matching shoes (#S202.16.128) that go with this purse.

**P202.16.49
1960s
Pewter Leather Frame Bag
with Matching Shoes**



Shoes #S202.16.128



Oklahoma Fashion Museum Collection

1960s Tan and Black Houndstooth Feedbag Purse and Hat

Acquisition # P202.16.50

Designer:

Dimensions:

Condition: Good

Description: This black and tan checkerboard hounds-tooth purse has a light brown leather at the top, bottom, and on the flap closure. It has 2 short leather handles and it closes with a hole and port lock. The interior is lined with a light brown suede and has 1 zipper pocket. It has a matching hat made by Suzy. The zipper shows signs of discoloration, the bottom border has small scuff marks, and the back has small splotches of paint.

Need a picture of the hat, which need to be acquisitioned



Oklahoma Fashion Museum Collection

1960s Velour Brown, Gold & Beige Handbag by Cara

Acquisition # P203.18.7

Designer: Cara, made in U.S.A.

Dimensions: 9.5"-10.5" wide x 6" high x 6.5" wide on the side bottom

Donor: June Coulter Bryan, Sept. 2018

Description: "This handbag is made of man made materials" and was originally \$16.00. A velour handbag in shaded brown, gold and beige. It has a brown faux leather lining with 1 inside zipper pocket. It has a brass chain for handles with fits through brass grommets.



Oklahoma Fashion Museum Collection

1960s Beige Straw Tote with Butterflies & Flowers

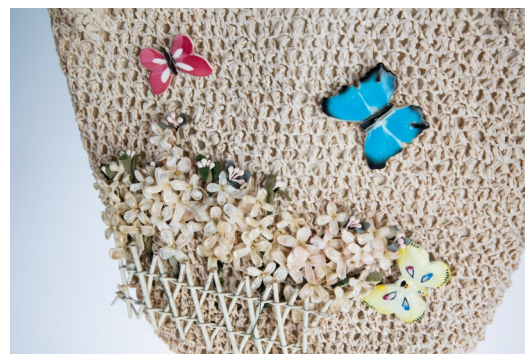
Acquisition # P203.18.11

Condition: Pristine

Dimensions: 8.25" x 12" wide x 9" high with 16" long handles

Donor: June Coulter Bryan, Sept. 2018

Description: This straw tote has an off-white lining under the straw sides. It has a small inside pocket with an attached label that says "Marcus Brothers of Miami, made in Japan". There are decorations on 1 side which includes 3 butterflies, flowers and a fence.



Oklahoma Fashion Museum Collection

1960s Faux White Straw Handbag made in Hong Kong

Acquisition # P203.18.12

Condition: Excellent

Dimensions: 9" wide x 8" high x 5" wide on the bottom of the side

Donor: June Coulter Bryan, Sept. 2018

Description: A faux white straw handbag with two 19" handles. It has faux white leather lining and white vinyl on the sides. It has 2 inside pockets and 1 zipper pocket. An inside tag reads "Expressly for Lesco Lona, Made in Hong Kong."



Oklahoma Fashion Museum Collection

1960s Beige Tote Bag with Flowers & Ladybugs by Claire Fashions

Acquisition # P203.18.13

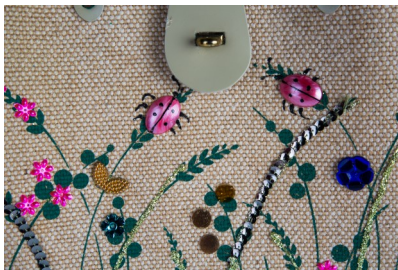
Inside stamp: Claire Fashions

Dimensions: 11.5" wide, 10" high, 4.5" wide on side

Condition: Excellent

Donor: June Coulter Bryan, Sept. 2018

Description: This tote has fabric on the outside with decorations on one side. It has 2 brown leather handles that are 13.5" long. It has 1 inside small zipper pocket which is stamped "Claire Fashions". One side has painted green designs of stems and leaves, which are decorated with ladybugs, sequins, glitters and beads. It has a wood bottom.



1960s
to
1970s

Oklahoma Fashion Museum Collection

1960s-70s White Fur Fold-Over Purse by Harry Rosenfeld

Acquisition # P202.16.15

Designer: Harry Rosenfeld

Dimensions: 6.5" wide (at bottom), 6" high (folded down), 2.5" wide on side bottom

Description: A white fur fold-over purse which might be made of astrakhan lamb. It has an exterior gold tone metal frame with flowers with plain gold metal on the sides and on the lid edges, and a kiss lock. The handle is an 36" length gold tone chain which can be doubled to 18" long. The bottom of the purse has 4 small round metal feet. The interior is beige fabric with the Rosenfeld mark. The metal bar on the bottom is stamped "made in France".

P202.16.15
White fur fold-over purse
with gold tone frame and
accents, gold chain handle



Oklahoma Fashion Museum Collection

1960s-70s Navy Blue Feed Bag Style Handbag

Acquisition # P202.16.27

Designer: Unknown

Condition: Excellent

Dimensions: 7" wide @ bottom x 8" high when extended

Description: A suede, navy blue feedbag style handbag with a blue drawstring closure. It has several tiny grey leather strips along the bottom edge for accents. The interior has black satin lining and no pockets.



P202.16.27
Navy Blue Feed Bag
Handbag with
Blue Drawstring Closure



Oklahoma Fashion Museum Collection

1960s-70s Light Brown Satchel

Acquisition # P202.16.31

Designer: Unknown

Condition: Poor

Dimensions: 12" wide x 10" high

Description: A light brown leather satchel with a flap and a single 13" long short handle. The flap is closed by threading an attached leather strap through a brass buckle. A strap is attached below which has a watch made by French watchmaker Montoise. The interior is lined in a medium brown suede and it has 2 zipper pockets and 2 open pockets. There are some scuff marks on the leather strap from the brass buckle and 1 open pocket is completely detached from the purse. Stitching has come loose where the flap attaches to the purse inside.



P202.16.31
1960s-70s
Beige Leather Satchel
with Montoise Watch



Oklahoma Fashion Museum Collection

1960s-70s Black Satin Satchel with a Dega Ballerina

Acquisition # P202.16.46

Designer: Unknown, Made in Spain

Condition: Very Good

Dimensions: 7.5" wide x 5.5" high

Description: This purse has a large flap opening on one side and fastens with a snap. The 34" long braided cord handle be either shoulder length, or shortened by doubling. The interior is lined with black fabric and has one open pocket. A stamp inside says "Made in Spain."

P202.16.46

Black Satin Satchel
with a Dega Ballerina



1970s

Oklahoma Fashion Museum Collection

1970s Roberta di Camerino Frame Bag

Acquisition #P202.16.1

Inside stamp: Made in Italy by Roberta di Camerino

Dimensions: 6" high x 3.6 wide (front @ bottom) x 6" wide (side)

Condition: Fair, fabric is loose on top under pull tab

Description: A blue velvet bag with 2 red stripes surrounded by 2 thick green stripes from the front to the back, a 9.5" long matching fabric handle, and a brass clasp on top. One side has an "R" initial on near the top, and the purse opens with 2 brass clasps to reveal a lined pocket. The main purse compartment is lined with leather and has a zipper pocket and an open pocket. The purse has some slight stains.

P202.16.1
1970s Blue Frame Bag

Designer:
Roberta di Camerino



Oklahoma Fashion Museum Collection

1970s Roberta di Camerino Red Tote Handbag

Acquisition # P202.16.23

Inside stamp: Made in Italy by Roberta di Camerino

Donor: Margaret (Babe) Goldman, wife of Syl Goldman, August 20, 1986

Dimensions: 14.5" wide x 11" high

Description: A red cut velvet tote bag with blue and green belt designs intertwined in a chain link pattern on both sides. It has a small brass "R" on one side of the purse in the lower left hand corner. The purse has 2 navy blue leather handles that are 12.5" long, and it has a metal zipper opening. The interior is lined with navy blue leather and it has a middle zipper compartment with 2 open compartments on each side. This purse goes with dress #78.86.20.B which we have in the collection.

P202.16.23

Red Cut-Velvet Tote
with Green and Blue Chain Links

Designer: Roberta di Camerino



This purse goes with
Acq. #78.86.2.B dress
Donated by:
Margaret (Babe) Goldman
August 20, 1986



Oklahoma Fashion Museum Collection

1970s Roberta di Camerino Red Handbag

Acquisition # P202.16.24

Inside stamp: Made in Italy by "Roberta di Camerino"

Condition: Very Good

Dimensions: 13" wide x 10.5" inches high / handle is 5" high

Description: A wine colored cut velvet handbag with 2 blue stripes and 2 green stripes surrounding a green letter "R" in a belt pattern. The R is reversed on the other side. The purse has 2 short solid brass handles formed in an "R" shape. The interior has black leather lining with one open pocket and one zipper pocket on both sides which are lined with navy blue fabric.

P202.16.24

Red Wine Colored Cut-Velvet Handbag with Brass Handles

Designer: Roberta di Camerino



Oklahoma Fashion Museum Collection

1970s White Beaded Handbag with Petit-Point Floral Embroidery

Acquisition # P202.16.37

Inside tag: Hand Made in France for C. & M. Caron

Condition: Good, some stains

Dimensions 11" wide @ bottom x 9" high

Description: This frame bag is covered in white seed beads and decorated with petit-point flower embroidery. A brass hinged flap on top folds over and fastens on the other side. It has a 15" long beaded handle and the inside is lined with white satin and has one open pocket. There are some stains on the outside bottom on the lining.

P202.16.37

White Beaded Handbag
with Floral Petit-Point
Hand Made in France
for C & M Caron



Oklahoma Fashion Museum Collection

1970s White Beaded with Petit-Point Embroidery

Acquisition # P202.16.38

Inside tag: Hand Made in Hong Kong

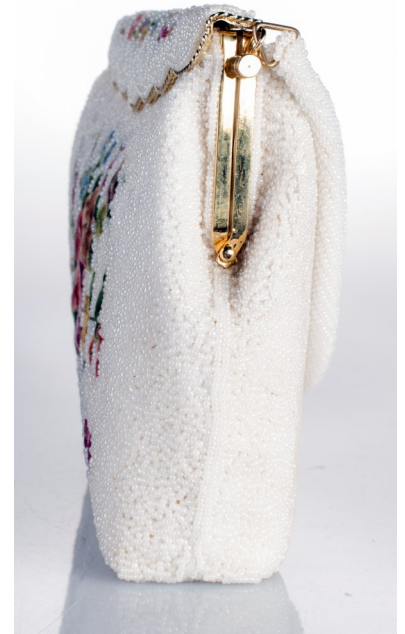
Condition: Excellent

Dimensions: 9" wide x 6" high

Description: A white beaded hinged frame bag with petit-point flowers on one side and a gold frame. The 12" round beaded handle attaches to a triangular metal piece. The top overlaps on one side and has a gold scalloped edge. The interior is lined with white silk and it has one open inside pocket.

P202.16.38

White Beaded Handbag
with Floral Petit-Point
Hand Made in Hong Kong



1970s
to
1980s

Oklahoma Fashion Museum Collection

Handbag: 1970s-80s Leather Sling Bag

Acquisition # P202.16.22

Designer: Ruth Saltz

Condition: Excellent

Dimensions: 13.5" wide x 9.5" high

Description: A brown leather sling bag with a body strap which is adjustable from 20"-29" long. One side of the purse has a metal plate with the letter "B" on it. The opening is hinged with 2 leather tabs on top to help open it. The interior is lined with brown fabric with "Ruth Saltz" signatures as a pattern and it has one zipper pocket.

P202.16.22

Reddish Brown Leather
Sling Bag

Designer: Ruth Saltz



1980s

Oklahoma Fashion Museum Collection

1980s Black Calf Purse

Acquisition # P202.16.52

Designer Stamp: Greta

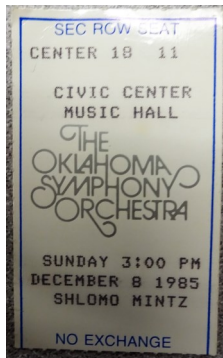
Condition: Very Good

Dimensions: 7" wide x 5.75" high

Description: A black calf fur purse in an accordion style. It has smooth leather shoulder or hand strap that which can be adjusted accordingly. The flap closes with a black leather strap fed which fits through a plastic opening on one side, and the strap is fed through 2 large plastic rings on top. The interior is lined with orange yellow fabric and has 3 open pockets and 1 zipper pocket. The underside of the flap is lined with black leather. The purse is missing 1 brass grommet where the handles attach on the underside, and another one is loose. An symphony orchestra ticket was inside the purse, and on the back is a radio station logo.

P202.16.52

1980s
Black Calf Purse



Symphony orchestra ticket

Oklahoma Fashion Museum Collection

1980s Black “Equitable” Handbag

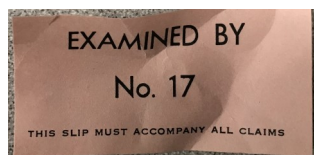
Acquisition # P203.18.5

Designer: Equitable

Dimensions: 8.5” @ bottom, 12.5” wide at top / 4” wide

Condition: Pristine

Description: A black leather handbag with a single 12” leather handle. It has a black hinge and latches with a gold tone kiss. Inside is a pocket with a zipper pocket on its side. Imprinted on the zipper pocket is “Equitable”. The designer tag is attached, and inside is an inspection note.



Inside views

Oklahoma Fashion Museum Collection

1980s Purple Leather Clutch by Phillippe of California

Acquisition # P203.18.10

Condition: Pristine

Dimensions: 12" wide at bottom, 11" wide on top

Donor: June Coulter Bryan, Sept. 2018

Description: A purple leather clutch with a cut out handle hold with metal around the edges. It has a snap closure inside and ecru lining. The original price was \$36.00 according to the attached price tag.

