

Daytime & Evening Capes, Coats, Furs, Jackets, Shawls & Stoles



1885-90 Velvet Mantelet



1920s Evening Coat



1950s-60s Evening Coat



1970s Daytime Coat



1870s Shoulder Cape



1970s White Mink Shrug

in the
Oklahoma Fashion
Museum Collection

at the
University of Central Oklahoma

Compiled and written by Mary Huffman, Coordinator of Grants & Contracts

College of Education & Professional Studies

University of Central Oklahoma, 2019

Forward by Mary Huffman

History of the Collection

In the late 1950s, several prominent Oklahoma City women in fashion-related businesses initiated contacts with The Fashion Group International, Inc. headquartered in New York. As a result, a new regional “Fashion Group, Inc. of Oklahoma City (OKC Fashion Group)” was established in the fall of 1958.

One of the goals of the OKC Fashion Group was to collect garments in order to establish a “designer costume collection” covering several decades and representing significant changes in fashion design. They collected garments and accessories from prominent women in Oklahoma. The collection was to be used by fashion marketing, costume design, drama, art, and history students. The items in the collection range from the late 1800s to the 1970s.

The group began collecting designer garments in 1984. In 1985 Lillian Russell began cataloging each item in a ledger. The ledger was hand written, and each clothing item had a hand written tag on it with some basic information. (A copy of the original acquisition tag is included on the following pages.)

In 1989, the OKC Fashion Group disbanded and donated the entire collection to Central State University, which is now called the University of Central Oklahoma (UCO). Even though the group disbanded, the ledger was maintained through July of 1994. The collection consists of over 800 items of clothing, 300+ hats, 151 pairs of shoes, 12 pairs of boots, 50+ purses, some jewelry and gloves.

The collection was kept in storage for many years and used occasionally for class instruction in the fashion marketing program. In 2014, I began the task of inventorying the collection, documenting details of each item and photographing some of the items and details. Most of the photos in this catalog were taken by fashion photography students.

It is now 2019 and everything has been photographed, documented and inventoried. It is my sincere hope that others will find this information helpful. Whether you’re interested in fashion design, fashion history, women’s history, the history of Oklahoma City, or are researching the people in the societal world, there is something in this catalog for many to use.

Catalog Arrangement

This catalog contains 77 items in the collection that were worn as “outerwear”. This includes daytime and evening capes, coats, furs, jackets, shawls & stoles. A few accessories are included in the fur section for fur neck wraps which were very popular at one time, and a fur muff. A few of the items were included in a previous volume of evening wear, but I thought it was appropriate to include them here also.

The following pages are arranged by category, then by decade in each category, and then numerically by the acquisition numbers. As each person donated these garments, each item was given a unique number. If they gave more than one item at a time, then a letter (a, b, c, d, etc.)

was added to the numeric numbers. As you look through this catalog there are some items which have the same number but letters at the end. You can get a “feel” for the particular style a person liked by looking at the items they donated.

One question I’m often asked is who donated the clothes. Thanks to Lillian Russell, who originally collected the garments and logged each item in the collection with the donor names, we have a list of the donors and the date they donated the items. Over the years I’ve researched the donor names to find out more about their lives and the social circles they were involved with. I’ve included a list of the donors of the items in this catalog with a little bit of information I have been able to find out about them, or their spouses. It’s interesting to look back in time and not only see the items the women wore, but also to learn more about them as a person.

Another question people often ask is what clothes we have from a particular designer. Twenty five (25) designers are represented in this volume, including Bonnie Cashin, Count Romi Ltd., Galanos, Pauline Trigere, and Roberta di Camerino. A list of the designers represented and the page(s) their designs can be found on are included for reference.

Many of the women were in the fashion business in some capacity, and many of the husbands were in the oil & gas industries, banking, law firms, fashion, and many other professions. Included in this book is a list of the women who donated their clothes as well as their husband’s name (if known) and a brief description. It’s kind of a “Who’s Who” in Oklahoma City during this time period.

On each page is included the condition, designer (if known), the acquisition # and the size. Also included, if available, are pictures of any tags found inside the garment, and pictures of the original inventory tag that Lillian Russell wrote. In some instances I’ve included detail pictures of designs, fabric, or damage. A description of each item is also included. The information for the descriptions came from Lillian Russell’s inventory tag, my physical assessment of each item, research on the designers, fabrics, and terms used when describing clothing. I hope this information is helpful for others.

The studio photographs were taken in the photography studio in the Mass Communications Building on the UCO campus under the direction of Mr. Jesse Miller, a professor of fashion photography. The student photographers were Kelsey Smith and Zach Hunter. These students were hired through a U.S. Department of Education grant called “Student Transformative Learning Record” (STLR) for this project. Some of the photos I took before the photography studio was available.

Whether you’re researching particular designers, styles, people, or fashion history, I hope the information in this catalog will be of interest to others in various professions.

Mary Huffman. Coordinator of Grants & Contracts
College of Education & Professional Studies
University of Central Oklahoma
Edmond, Oklahoma
September 2019

Table of Contents

Daytime Coats	Page
1920s	
1.85.10.A	Beige silk coat with multi-colored embroidery..... 2
191.93.5.D	Rust colored wool daytime coat..... 3
1940s	
1.85.10.B	Red & green checkered wool coat by Pauline Trigere..... 5
100.86.2.A	Navy blue double breasted wool coat by Calvin Klein..... 6
1950s	
107.87.2	Black mohair coat..... 7
107.87.3	Black worsted wool coat..... 8
142.88.12.F	Brown & grey wool plaid coat by Carlye..... 9
142.88.12.I	Brown tweed wool coat tailored by Bardley..... 10
201.37.40	Field & Stream brown leather windbreaker jacket..... 11
1950s-60s	
60.86.1	Navy blue ribbed velvet coat by Ben Zuckerman..... 13
94.86.8.B	Bright green tent coat with hat by Originala..... 14
136.88.20.A	Grey wool coat..... 15
136.88.20.D	Black silk & wool coat..... 16
1960s	
5.85.1	Black wool coat by Norman Norell..... 18
56.86.24.S	Hot pink wool coat by Jim Baldwin for Young Elegants..... 19
56.86.24.W	Moss green suede coat by Cuddle-Coat..... 20
67.86.10.I	Red wool cape..... 21
74.86.7.D	Beige & multicolored wool coat by Bonnie Cashin..... 22
105.87.12.B	Orange/red wool coat by Ginala..... 23
107.87.4	Orange wool coat by Bardley..... 24
166.90.2.A	Navy blue wool coat by Pauline Trigere..... 25
189.93.15.E	Brown & black all weather traveler coat by Count Romi..... 26
1960s-70s	
13.85.25.C	Multicolored plaid coat by Modele Jeanne Lanvin..... 28
136.88.20.B	Black Ultrasuede coat by Shannon Rodgers for Jerry Silverman.... 29
1970s	
65.86.6.B	Multicolored coat by Count Romi..... 31
78.86.20.A	Navy blue, & red velvet coat by Roberta di Camerino..... 32
78.86.20.B	Red velvet coat with chain design by Roberta di Camerino..... 33
83.86.8.G	Plaid velvet coat with red bands by Roberta di Camerino..... 34
156.89.1	Black wool coat by Pauline Trigere..... 35
183.91.12.C	Matching navy blue skirt and coat by Pauline Trigere..... 36
188.93.4.D	Beige & black velvet coat by Count Romi..... 37

Raincoats **Page**

1950s			
	119.87.6.B	1950s Ocelot print raincoat by Lawrence of London.....	39
1960s			
	119.87.6.A	1960s Navy blue twill raincoat.....	40
	1.85.10.D	1965 Grey & black snake raincoat by Tiktiner of France.....	41
1970s			
	75.86.16.G	1970s Black poplin raincoat by Saint Laurent.....	42

Shoulder Capes, Shawls & Long Stoles **Page**

1800s			
	37.85.5.D	1860s Crocheted shawl & purse.....	44
	159.89.10.H	1870s Antique short brown cape.....	45
	190.93.11.K	1870s Black silk faille shoulder cape.....	46
	21.85.2.B	1880s Black cape & skirt.....	47
1920s			
	161.89.3.C	Long apricot silk shawl with fringe.....	48
	189.93.15.N	Large fringed beige silk shawl.....	49
1950s			
	65.86.6.A	Grey wool & black fur stole by Castillo of Spain.....	50
	119.87.6.D	Navy blue long stole with fringe by Davidow.....	51
	119.87.6.E	Black knit long stole by Bonnie Cashin.....	52
1970s			
	74.86.21.Q	Black balloon evening jacket by Galanos for Amelia Gray.....	53

Short Evening Jackets **Page**

1885-1890			
	159.89.10.J	Brown velvet dolman mantelet and capelet.....	54
1920s			
	190.93.11.I	Evening Chinese robe.....	55
1950s			
	105.87.12.H	Black tuxedo jacket.....	56
1970s			
	74.86.21.Q	Black balloon evening jacket by Galanos for Amelia Gray.....	57

Short Evening Coats **Page****1930s**

189.93.15.B Black velvet evening coat with white ermine collar..... 59

1950s-60s

77.86.20.D Brocade evening coat with brown milk collar & cuffs..... 60

1960s

74.86.21.B Short gold lace evening coat..... 61

78.86.20.M Navy blue silk with velvet evening coat by Dynasty..... 62

132.88.12.K White evening coat..... 63

136.88.20.C Black wool evening coat by Martha..... 64

154.89.4.A White brocade evening coat by Originala..... 65

201.16.7 Pink slipper satin evening coat by William Fox..... 66

Long Evening Coats & Capes **Page****1920s**

107.87.1 Navy blue wool cape with beige fox fur collar..... 68

190.93.11.H Black satin long evening coat..... 69

201.16.8 Long black velvet evening coat with attached cape..... 70

1930s

35.85.7.D Long black taffeta evening coat..... 71

1950s

191.93.5.A Long black velour evening cape..... 72

1970s

18.85.10.8 Long black velvet evening coat with fur lined hood..... 73

Furs **Page****1930s**

165.90.3.B White fox fur neck piece..... 75

1940s

67.86.10.J Autumn haze mink fur stole..... 76

95.86.2.A White tipped silver fox fur jacket..... 77

165.90.3.A Brown mink stole & 3 piece fur neck wrap..... 78

165.90.3.C Brown sable neck wrap..... 79

174.90.2.B Brown ermine fur coat..... 80

1950s

43.85.4.D Brown mink fur muff..... 81

181.91.4.A Black Persian lamb caplet..... 82

188.93.4.A Blue iris mink coat..... 83

188.93.4.C Short brown mink cape and hat..... 84

Furs (con't) **Page**

1950s

191.93.5.C Black fur box jacket..... 85

1960s

78.86.20.T Lacota seal coat by Birger Christensen..... 86

105.87.12.F Brown mink street length cape..... 87

185.91.2.A Brown & white calfskin coat by Alexandrine..... 88

198.94.3.C Norwegian blue fox fur coat..... 89

1970s

49.86.11.I White mink fur shrug..... 90

List of Designers

List of Donors

Daytime Coats

1920s

Oklahoma Fashion Museum Collection

1920s Beige Silk Coat with Multi-Colored Embroidery

Category: Coat

Acquisition #1.85.10.A

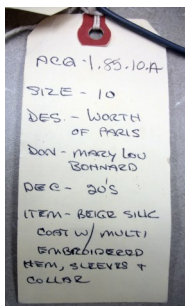
Condition: Fair

Estimated size: 10

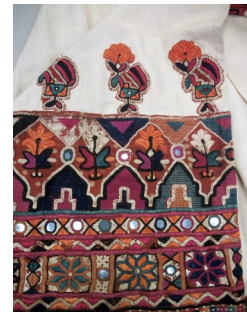
Designer: Unknown

Donor: Mary Lou Bohnard, April 7, 1985

Description: A beige silk coat with multi colored embroidery on hem, sleeves, and collar. It has shoulder pads, a wide collar, and a front opening without any closures. There are some moth holes in the fabric.



Back of collar detail



Decorative trim on bottom of coat

Oklahoma Fashion Museum Collection

1920s Rust Colored Wool Daytime Coat

Category: Coat Acquisition #191.93.5.D
 Condition: Very Good Estimated size: 8
 Designer: Unknown
 Donated by: Mr. Haywood Vaughan (Ardmore, Okla.), July 20, 1993

Description: A 3/4 length rust colored wool daytime coat with a Paris print lining. The long sleeves have an attached brown button over a bound button hole. There is an attached belt from side to side which weaves in and out of vertical designs on the coat. There's a small pocket inside the front of the coat. There are a few moth holes in the fabric.



Side view of belt



Lining detail



Moth holes in fabric

*Coat 191.93.5.D
 Size 8
 Designer unknown
 Don. Haywood Vaughan
 Dec. 2006
 Notes: Daytime coat
 Rustish colored
 wool coat with Paris
 print lining. I
 think this was made
 during the 20s to 30s*

Daytime Coats

1940s~50s

Oklahoma Fashion Museum Collection

1940s Red & Green Checkered Wool Coat by Pauline Trigere

Category: Coat

Acquisition #1.85.10.B

Condition: Mint

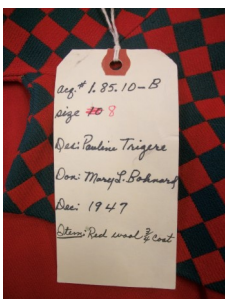
Estimated size: 8

Designer: Pauline Trigere

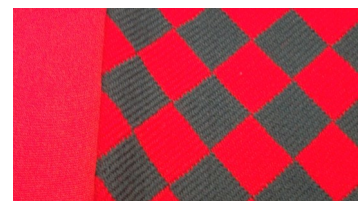
Date: 1947

Donated by: Mary Lou Bohnard, April 7, 1995

Description: This red and dark green checkered wool coat or jacket is 3/4 length with a turned up collar. It's lined in red fabric, has 3/4 length sleeves, 2 hand warmer pouch pockets and 2 vents in the back.



Front Pocket



Fabric pattern detail

Oklahoma Fashion Museum Collection

1950s Navy Blue Double Breasted Wool Coat by Calvin Klein

Category: Coat

Acquisition #100.86.2.A

Condition: Excellent

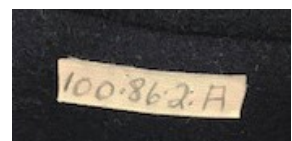
Size: 14

Designer: Calvin Klein

Union Tag: IGLWU

Donated by: Miss Patti Hudson, Dec. 28,, 1986

Description: This heavy winter navy blue wool coat is double breasted with eight 1" navy blue buttons in front. It has a wide pointed collar, seam pockets with a flap over them and long sleeves with a matching button on each sleeve. There is a spare button attached inside the coat. The back has a 19" long back vent and a center belt with 2 buttons.



Oklahoma Fashion Museum Collection

1950s Black Mohair Coat

Category: Mohair Coat

Acquisition #107.87.2

Condition: Excellent

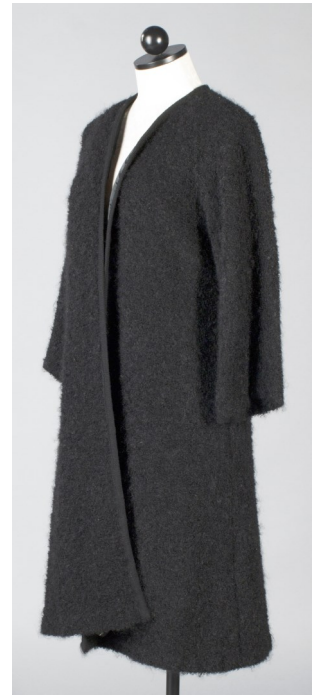
Estimated size: 10

Designer: Unknown

Store Tag: None

Donated by: Central State University (UCO)

Description: A black mohair coat with 3/4 sleeves and no collar. It has black lining with leaf patterns, and there is braid down the front and around the neck. The front opening does not have any fasteners.



ACQ # 107.87.2
SIZE 10
DES. ?
DON C.S.U.
DEC. 50's
DESC BLACK
MOHAIR 3/4 SLEEVE
BUTTONLESS
ITEM - COAT



Lining detail

Oklahoma Fashion Museum Collection

1950s Black Worsted Wool Coat

Category: Coat

Condition: Excellent

Designer: Unknown

Donated by: Central State University (UCO), July 22, 1989

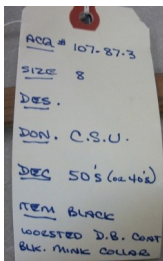
Acquisition #107.87.3

Estimated size: 8

Store Tag: Blum Store, Philadelphia

Union Tag: AFL-CIO

Description: A black worsted wool coat. It is double-breasted with 6 large buttons and bound button-holes. It has long sleeves, a brown mink collar and 2 front patch pockets. The lining is black fabric.



Button detail

Oklahoma Fashion Museum Collection

1950s Brown & Grey Wool Plaid Coat by Carlye

Category: Coat

Acquisition #142.88.12.F

Condition: Excellent

Estimated size: 10

Designer: Carlye

Store Tag: None

Donated by: Betty Jernigan, wife of E.D. Jernigan Jr., Aug. 25, 1988

Description: A brown and grey wool plaid coat with an attached charcoal grey wool ascot. It has 3 large brown buttons in front, long sleeves, a collar, an empire side belt.



ACQ# 142-88-12-F
SIZE - 10
DES - CARLYE
DON - BETTY
JERNIGAN
DEC - 50's
ITEM - BOLD PLAID
COAT CHARCOAL ASCOT
EMPIRE SIDE BELTED



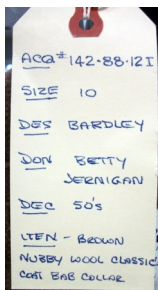
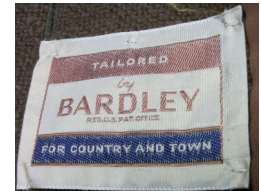
Fabric Detail

Oklahoma Fashion Museum Collection

1950s Brown Tweed Wool Coat Tailored by Bardley

Category: Coat Acquisition #142.88.12.I
Condition: Very Good Estimated size: 10
Designer: Tailored by Bardley for Country & Town Store Tag: Handel's at Nichols Hills, OKC
Donated by: Betty Jernigan, wife of E.D. Jernigan Jr., Aug. 25, 1988

Description: A brown wool tweed coat with long sleeves with long gussets, a bab collar, 2 front flap pockets and 1 fake pocket. It has a front open with 8 brown plastic buttons, and copper colored silk lining. There are a few moth holes and some small stains on the lining. It has an ILGWU Union Tag, and a National Board Coat & Suit Industry tag inside.



Union tags



Front opening

Oklahoma Fashion Museum Collection

1950s Field & Stream Brown Leather Windbreaker Jacket

Category: Jacket

Acquisition #201.37.40

Condition: Excellent

Estimated size: 12-14

Designer: Field & Stream

Store Tag: Andy Anderson's Sporting Goods

Donated by: Kathy Black (daughter), Feb. 17, 2017; Owned by: Loyce Jean Willett

Description: A brown leather "aquasuede" windbreaker jacket. It has long sleeves, a collar, side slit pockets, a tie belt, and 5 large matching buttons. The inside tag reads: "Genuine Field & Stream, Reg. U.S. Patent Off., Leather windbreaker, fashioned by Gordon & Ferguson, Inc., St. Paul, Minn."



Daytime Coats

1950s~60s

Oklahoma Fashion Museum Collection

1950s-60s Navy Blue Ribbed Velvet Coat by Ben Zuckerman

Category: Coat

Acquisition #60.86.1

Condition: Good

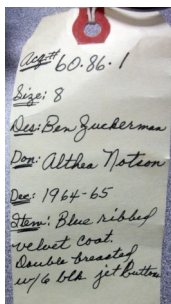
Estimated size: 8

Designer: Ben Zuckerman

Store Tag: Balliet's, Okla. City

Donated by: Althea Louise Notson, February 18, 1986

Description: This coat is made out of navy blue ribbed velvet. It is double breasted with 6 big black buttons and has bound buttonholes. The coat is fully lined and has 2 front pockets with tabs. The pockets had snaps on them at one time, but they're missing. The coat was purchased at Balliet's in Oklahoma City.



Front pocket detail

Oklahoma Fashion Museum Collection

1950s-60s Bright Green Tent Coat with Hat by Originali

Category: Coat

Acquisition #94.86.8.B

Condition: Very Good

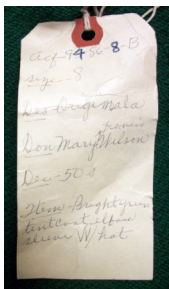
Estimated size: 8

Designer: Originali

Store Tag: Balliet's, Okla. City

Donated by: Mary Frances Wilson (wife of Tom B. Wilson), Nov. 24, 1986

Description: A bright green winter tent coat. It has a wide pointed collar, 3/4 length sleeves, 2 large patch pockets, and 3 large green buttons in front. The matching hat has green velvet lining and a green button surrounded by fringe on top.



Oklahoma Fashion Museum Collection

Late 1950s-early 1960s Grey Wool Coat

Category: Coat

Acquisition #136.88.20.A

Condition: Very Good

Estimated size: 10

Designer: Unknown

Store Tag: None

Owned by: Vivian Nichols Coyle, Oklahoma City

Donated: June 25, 1988 by Dick Coyle

Description: A big dark grey wool coat with long sleeves, white lining and seam pockets. It has a front open with no buttons or adornment. There are some slight neck stains.



ACQ# - 136.88.20.A
SIZE - 10
DES - Z NORELL
DON - VIVIAN COYLE
DEC - 60's
ITEM - DARK
GREY WOOL
COAT



Neck stains

Oklahoma Fashion Museum Collection

Late 50s-Early 60s Black Silk & Wool Coat

Category: Coat

Acquisition #136.88.20.D

Condition: Excellent

Estimated size: 10

Designer: Unknown

Store Tag: None

Owned by: Vivian Nichols Coyle, Oklahoma City

Donated: June 25, 1988 by Dick Coyle

Description: A black, silk and wool alaskeen coat. It has black lining, no collar, slit pockets, no buttons, and 3/4 sleeves.



ACQ # 136-88-20D
SIZE - 10
DES - ? NORELL
DON - VIVIAN COYLE
DEC - 60
ITEM - BLACK
SILK & WOOL
ALASKEEN COAT

Daytime Coats

1960s

Oklahoma Fashion Museum Collection

1960s Black Wool Coat by Norman Norell

Category: Coat Acquisition #5.85.1
 Condition: Good Estimated size: 6-8
 Designer: Norman Norell Store Tag: Balliet's, Oklahoma City
 Donated by: Cleo Johnston, April 24, 1986

Description: This is a heavy black wool coat which is fully lined. It's double breasted and has 8 large rhinestone buttons down the front and 2 large patch pockets. There is a belt which can be worn with the coat which buttons onto the front buttons.



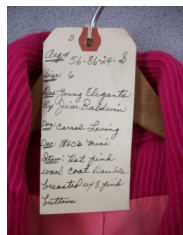
Obj # 5-85-1
 Size: 6-8
 Des: Norman Norell
 Don: Cleo Johnston
 Des: 1950s-60s
 Heavy Black wool coat
 8 large Rhinestone
 buttons and double
 breasted

Oklahoma Fashion Museum Collection

1960s Hot Pink Coat by Jim Baldwin for Young Elegants

Category: Coat Acquisition #56.86.24.S
Condition: Good Estimated Size: 6
Designer: Jim Baldwin for Young Elegants Union Tag: ILGWU
Owned by: Carol Loving (wife of William Albert Loving)

Description: This “hot pink” coat from the 60s is fully lined and made of heavy wool. It has 2 pockets in the front with coverings, and a attached belt in the back. The coat is double breasted and has 8 pink barrel beads. Four buttons fit into bound buttonholes, and the neck closes with a snap and a button and loop closure. Donated by: Pat Schweinsberg (daughter), Feb. 1, 1986



Oklahoma Fashion Museum Collection

1960s Moss Green Suede Coat by Cuddle-Coat

Category: Coat Acquisition #56.86.24.W
 Condition: Excellent Estimated size: 8
 Designer: Cuddle Coat Store Tag: None
 Owned by: Carol Loving (wife of William Albert Loving)

Description: A moss green suede “cuddle coat” which opens on the sides. It has black knit sleeves with black lining, black knit trim around the neck, and sheepskin lining. The front has 2 big patch pockets. This coat is to be worn over pants and closes in front with 3 snaps. Donated by: Pat Schweinsberg (Daughter) Feb. 1, 1986



D
 Acq# 56.86.24.W
 Size: 8
 Des: Cuddle-Coat
 Don: Barrel Loving
 Dec: 1960s
 Des: Moss green sued
 coat open sides
 w/ black knit sleeve
 & trim. 2 big pockets
 in front. To be worn
 over pants.

*sheepskin lining
 slant-jacket*

Front opening



Oklahoma Fashion Museum Collection

1960s Red Wool Cape

Category: Cape

Acquisition #67.86.10.I

Condition: Good, some moth holes

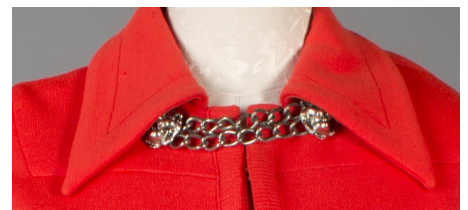
Estimated size: Small

Designer: Unknown

Store Tag: The Mullers, Oklahoma City

Donated by: Dorothy Ivins, May 3, 1986 (wife of Drayton Walford Ivins Jr.)

Description: A bright red unlined cape made in Kimberly 100% virgin wool.. It closes at the neck with a short gold chain that fit over the heads of 2 lions. Inside is an ILGWU union tag. The cape has no arm-holes.



DOROTHY
MAY 3-1986

Acq# 67.86.10.I
Size: 6-8
Des: Kimberly
Don: Dorothy Ivins
Dec: 1960s
Item: Bright red cape
Silver chain closing
at neck - no arm
holes



Oklahoma Fashion Museum Collection

1960s Beige & Multicolored Wool Coat by Bonnie Cashin

Category: Coat

Acquisition #71.86.7.D

Condition: Very Good

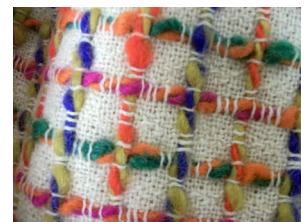
Estimated size: 12

Designer: Bonnie Cashin

Store Tag: Lord & Taylor

Donated by: Kathryn M. Greenwood, July 1, 1986

Description: An unlined, beige wool coat with multicolored stitching in squares covering the fabric. It has long sleeves, a round stuffed neckline, and a front opening with a leather strap and gold tone buckle for closure at the neck. It has beige leather trim on the sleeve ends, down the front, and around the hemline. It has 2 side vents which are rounded at the bottom.



Acq # 71.86.7.D
Size: 12
Des: Bonnie Cashin
Don: Kathryn Greenwood
Des: 60's
Desc: Beige wool coat
w/ beige leather trim
with multi-colored
stitching in squares
covering fabric.



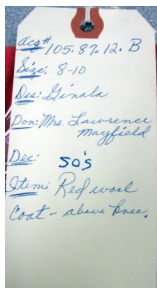
Oklahoma Fashion Museum Collection

1960s Orange/Red Wool Coat by Ginala

Category: Coat
 Condition: Very Good
 Designer: Ginala
 Donated by: Joniel "Jo" Foster Russell (wife of Harold Russell), June 18, 1987

Acquisition #105.87.12.B
 Estimated size: 8-10
 Store Tag: Saks Fifth Avenue

Description: A heavy orange/red wool coat which reaches above the knee. It has an orange lining, long sleeves, a round collar, and a National Board Coat & Suit Industry union tag inside. It's double breasted with 8 gold buttons, a snap at the neck, and has front pockets with flaps. There are some slight moth holes.



Union Tag

Oklahoma Fashion Museum Collection

1960s Orange Wool Coat by Bardley

Category: Coat

Acquisition #107.87.4

Condition: Very good

Estimated size: 8 / Union Tag: ILGWU

Designer: Bardley

Store Tag: Meadowbrook, B. Altman & Co.

Donated by: Central State University (UCO), July 22, 1989

Description: An orange, long sleeved coat made of 100% virgin wool. It has 4 pockets and 5 gold buttons on the front. The back has a self-belt with two gold buttons.



ACQ # 107-87-4
SIZE 8
DES MEADOWBROOK
DON C.S.U.
DEC. 60S
ITEM ORANGE
COAT 4 PATCH
POCKETS



Inside Tags



Button

Oklahoma Fashion Museum Collection

1960s Navy Blue Wool Coat by Pauline Trigere

Category: Coat

Acquisition #166.90.2.A

Condition: Very Good

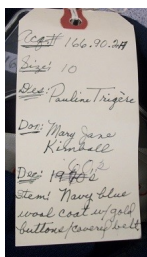
Estimated size: 10

Designer: Pauline Trigere

Store Tag: Balliet's, Okla. City

Donated by: Mary Jane Kimball (wife of Paul Marion Kimball), June 4, 1990

Description: A navy blue wool coat, fully lined, with 6 gold buttons, slit pockets, long sleeves, and a wide collar attached to the front. Buttonholes are under the front facing, and there is a matching fabric belt with a big metal buckle. It has one small moth hole.



Oklahoma Fashion Museum Collection

1960s Brown & Black All Weather Traveler Coat by Count Romi

Category: Coat

Acquisition #189.93.15.E

Condition: Excellent

Estimated size: 8-10

Designer: Count Romi Ltd.

Store Tag: None

Donated by: Ruth Frazier, July 7, 1993

Description: An "all weather traveler" coat. This coat is brown with black circle designs, double breasted with 10 round black buttons and 5 bound buttonholes. It has long sleeves, a round collar, slit pockets, and brown lining.



Acq # 189.93.15.E
Size: 8-10
Des: Count Romi
Don: Ruth Frazier
Dec: 60s
Stm: All weather
Traveler Coat
Brown w/ black circle
designs double breasted
bound front and
coat lined.

Daytime Coats

1960s~70s

Oklahoma Fashion Museum Collection

1960s-70s Multicolored Plaid Coat by Modele Jeanne Lanvin

Category: Coat Acquisition #13.85.25.C
 Condition: Excellent Estimated size: 8-10
 Designer: Modele Jeanne Lanvin, Paris, execute par Maria Carine sur autorisation special
 Owned by: Ellen E. Burns (Ponca City, OK) Store: Balliet's, Okla. City

Description: A multi-colored coat of hand woven fabric in vivid basket weave designs with reds, blues, greens and yellows. It has long sleeves, a raised collar, 4 navy & gold buttons in front, and a snap at the neck, 2 front pockets, and back and side slits. Donated by Libby Burns, May 23, 1985.



Tag #13-85-25-C
 Size 8-10 (about model)
 (by) Jeanne Lanvin
 (by) Ellen Burns
 By Mrs. Jack Burns
 1/16 1/2 m. ends, 70's
 (from) multi-colored
 (text) - (text) (text)
 (text) - (text) (text)
 (text) - (text) (text)

Description
 Multi-colored, hand woven fabric in vivid basket weave design with reds, blues, greens & yellow. Closing with a snap & 4 buttons - Excellent condition

Oklahoma Fashion Museum Collection

1960s-70s Black Ultrasuede Coat by Shannon Rodgers for Jerry Silverman

Category: Ultrasuede Coat

Acquisition #136.88.20.B

Condition: Excellent

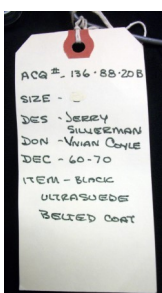
Estimated size: 8-10

Designer: Shannon Rodgers for Jerry Silverman

Store Tag: Balliet's, Oklahoma City

Owned by: Coyle, Vivian Nichols (wife of John W. Coyle, Sr.)

Description: A black ultrasuede coat with a matching tie belt. It has black lining, long sleeves, no collar and is full length. Donated on June 25, 1988 by Dick Coyle.



Daytime Coats

1970s

Oklahoma Fashion Museum Collection

1970s Multi-Colored Coat by Count Romi Ltd.

Category: Coat

Acquisition #65.86.6.B

Condition: Excellent

Estimated size: 10

Designer: Count Romi Ltd.

Store Tag: None

Donated by: Mary Lou Bohnard , April 5, 1986

Description: A multi-colored coat in black, red, brown, and white patterns. It has long sleeves, pockets, a collar, red lining, and 3 large gold buttons , bound buttonholes, and 3 snaps in front. It also has a matching belt with a large gold buckle.



Acq. # 65.86.6.B
 Size: 10
 Des: Count Romi Ltd.
 Don: Mary Lou Bohnard
 Dec: 1960 - Cox Co.
 3 large multi-colored coat & gold buttons matching belt



Fabric detail

Oklahoma Fashion Museum Collection

1970s Navy Blue & Red Velvet Coat by Roberta di Camerino

Category: Coat & Accessories

Acquisition #78.86.20.A

Condition: Very Good

Estimated size: 8-10

Designer: Roberta di Camerino

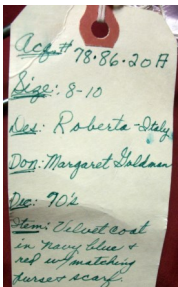
Store Tag:

Donated by: Margaret "Babe" Goldman (wife of Sylvan "Syl" Nathan Goldman), August 20, 1986

Description: This velvet coat is navy blue on the top and sleeves with red on the bottom with a buckle design in front and back. It has a mandarin collar, long sleeves, seam pockets, red lining, 5 navy blue buttons in front that fasten under a top facing in keyhole buttonholes. There is an extra button at the hemline. It has a back vent which has a slight tear, and some lining discoloration on the shoulders from a wooden hanger. There is a matching purse and scarf.



Fabric discoloration



Inside of sleeve



Matching scarf



P202.16.48

1960s
Roberta de Camerino
Wine & Blue Velvet
Frame Bag

Oklahoma Fashion Museum Collection

1970s Red Velvet Coat with Chain Design by Roberta di Camerino

Category: Coat

Acquisition #78.86.20.B

Condition: Excellent

Size: 14/48

Designer: Roberta di Camerino

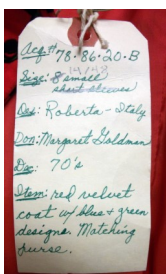
Store Tag: Jerome's, Mayfair, OKC

Donated by: Margaret "Babe" Goldman (wife of Sylvan "Syl" Nathan Goldman), August 20, 1986

Description: A red velvet coat with blue and green intertwining chain link design. It has a large notched collar, 5 gold buttons down the front, long sleeves and is fitted at the waist. A gold tone chain is inside the neckline for hanging it up. An inside care tag reads: "commercial dry clean only—do not use petroleum solvent—no wring out or twist—iron from wrong side only if necessary". This coat has a matching purse.



Care tag & Chain



Matching purse #P202.16.23



Button detail

Oklahoma Fashion Museum Collection

1970s Plaid Velvet Coat with Red Bands by Roberta di Camerino

Category: Coat

Acquisition #83.86.8.G

Condition: Excellent

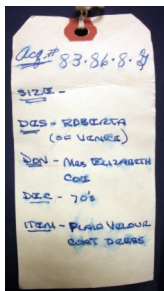
Size: 12

Designer: Roberta di Camerino

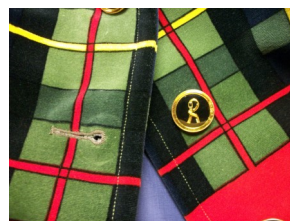
Store Tag: Nieman-Marcus

Donated by: Elizabeth M. Coe (wife of Charles R. "Bucket" Coe), Nov. 15, 1986

Description: This velvet coat is patterned in a green, blue and black plaid with yellow and red squares on top of the plaid design, and it has a wide red band around the long sleeves and at the waist. The coat has a large notched collar, 5 black & gold tone buttons in front with 1 snap below the bottom button, and it has keyhole buttonholes. The inside has navy blue lining, a small gold tone chain at the back of the neck for hanging, and a care tag.



Size tag



Button detail



Care tag, chain, and store tag

Oklahoma Fashion Museum Collection

1970s Black Wool Coat by Pauline Trigere

Category: Coat Acquisition #156.89.1
 Condition: Good Estimated size: 6
 Designer: Pauline Trigere Store Tag: Balliet's, Okla. City
 Donated by: Mary Jo Harper (wife of David Harper), May 10, 1989

Description: A heavy black wool coat with black lining and 3 large gold nugget buttons. It has an inset belt in back, a collar, and slit pockets on the sides. There is some damage to the buttonholes.



Acq# 156.89.1
 Size: 6
 Des: Pauline Trigere
 Don: Mary Jo Harper
 Date: 1972
 Item: Black wool
 coat w/ heavy
 gold nugget buttons
 Inset belt in back.



Buttonhole damage



Button detail

Oklahoma Fashion Museum Collection

1970s Matching Navy Blue Skirt and Coat by Pauline Trigere

Category: Skirt and Coat

Acquisition #183.91.12.C

Condition: Excellent

Estimated size: 10

Designer: Pauline Trigere

Store Tag: Balliets, Okla. City

Donated by: June Durland (wife of Jack Raymond Durland), Aug. 20, 1991

Description: A matching skirt and coat in heavy navy blue fabric. The **skirt** has a back zipper, a "Front" tag, navy blue lining, and an attached wide belt over the waist which wraps to the front. The **coat** is lined, 3/4 length, has long sleeves with turned up cuffs, a collar, seam pockets, a 1 button front closure, and a matching fabric belt. The coat has an ILGWU union tag also.



Oklahoma Fashion Museum Collection

1970s Beige & Black Velvet Coat by Count Romi

Category: Coat

Acquisition #188.93.4.D

Condition: Excellent

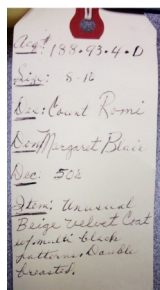
Estimated size: 8-10

Designer: Count Romi

Store Tag: Balliets, Okla. City

Owned & Donated by: Margaret Berry Blair, (wife of H. Henley Blair), April 20, 1993

Description: An unusual beige velvet coat with various black patterns. It has a light brown lining, long sleeves, pockets and a collar. It's double breasted with large black buttons and can be buttoned at the neck. It has an ILGWU union tag inside.



Union tag

Raincoats

Oklahoma Fashion Museum Collection

1950s Ocelot Print Raincoat by Lawrence of London

Category: Raincoat

Acquisition #119.87.6.B

Condition: Excellent

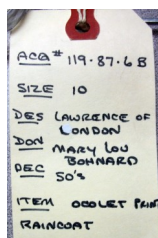
Estimated size: 10

Designer: Lawrence of London, a NY Corp.

Store Tag: None

Donated by: Mary Lou Bohnard, Nov. 11, 1987

Description: An ocelot print weather resistant raincoat fully lined with "Lawrence of London" printed on the lining fabric. The coat has long sleeves, a round collar, pockets, and 4 covered buttons down the front. The inside label says it "an exclusive imported fabric, weather resistant, made in U.S.A."



Lining

Oklahoma Fashion Museum Collection

1960s Navy Blue Twill Raincoat

Category: Raincoat

Acquisition #119.87.6.A

Condition: Excellent

Estimated size: 10

Designer: Unknown

Union tag: ILGWU / AFL-CIO

Donated by: Mary Lou Bohnard, November 11, 1987

Description: A navy blue twill raincoat with long sleeves, a round collar and a matching belt. It closes with 5 snaps, and has 2 large gold buttons with a chain across the breast. The matching wide belt has a large gold button.



ACQ #
119-87-6A
SIZE - 10
DES - ?
DON MARY LOU
BOHNARD
DEC 60's
ITEM - NAVY
RAINCOAT W BIG
GOLD BUTTONS &
CHAIN. BELT



Union tag

Oklahoma Fashion Museum Collection

1964 Grey & Black Grey Snake Raincoat by Tiktiner of France

Category: Raincoat

Acquisition #1.85.10.D

Condition: Very Good

Estimated size: 10

Designer: Tiktiner of France

Bought from: Lawrence of London

Donated by: Mary Lou Bohnard, March 17, 1985

Description: This midi length grey snake raincoat with black leather trim was bought from Laurence of London. It has 8 silver buttons down the front and 2 buttons on the sleeves. It's double breasted, has a collar, a splash flap in the back, pockets, and green lining. It has a matching belt with a round silver buckle. It was worn with high heel black boots.



Cuff with buttons

Obj # 1.85.10-D
 Size: 10
 Des: Tiktiner
 Don: Mary Lou Bohnard
 Dec: 1964
 Item: grey snake
 raincoat

Description
 Raincoat grey snake
 with black leather trim
 by Tiktiner of France
 Bought from Laurence
 of London.
 Midi coat - wrap
 High heel blk boots.
 Silver buttons - belt
 silver buckle.

Close up of splash panel inside

Oklahoma Fashion Museum Collection

1970s Black Poplin Raincoat by Saint Laurent

Category: Raincoat Acquisition #75.86.16.G
 Condition: Very Good Size: 36 / Style: RV 669
 Designer: Saint Laurent, rive gauche, Paris Store Tag: Balliet's Okla. City
 Donated by: Arden Barrett (wife of Dr. Paul Arthur Barrett), July 10, 1986

Description: A two piece poplin raincoat with a matching 3/4 length sleeveless tunic vest. It was made in France and has a red plaid lining. A button is missing.



Acq# 75-86-16-8
 Size: 8
 Des: Saint Laurent
 Don: Arden Barrett
 Des: 60's
 Item: 2 pc poplin
 rain coat w/ matching
 3/4 length tunic vest
 black/brn. (over)



Tunic vest

Shoulder
Capes,
Shawls
& Long Stoles

Oklahoma Fashion Museum Collection 1860s

Crocheted Shawl and Purse

Acquisition #37.85.5.D

Condition: Good

Estimated Date: 1860

Estimated Size: small

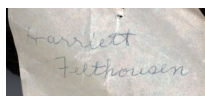
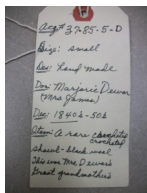
Donated by: Marjorie Teller Dewar (wife of James P. Dewar, M.D.), Nov. 13, 1985

Owned by: Harriett Teller Felthausen

Description: This shawl was hand crocheted in dark green wool and has interwoven black ribbons and a black ribbon tie. It has a matching black purse, both of which were made before the Civil War. The donor's grandmother, Harriett Teller Felthausen was the owner of this garment. This family married into the Morris family, the inventor of the Morris Telegraph.



Detail picture



Matching Purse

Oklahoma Fashion Museum Collection

1870s Antique Short Brown Cape

Category: Short Cape

Acquisition #159.89.10.H

Condition: Good

Estimated size: 6-8

Designer: Unknown

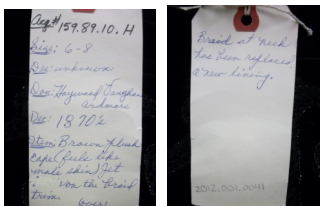
Store Tag: None

Donated by: Mr. Haywood Vaughan (Ardmore, OK), October 16, 1989

Description: A brown plus cape that feels like mole skin. It has black braid designs on the front and back. It closes with two buttons and a loop. The braid at the neck has been replaced as well as the lining.



Braid design detail



Oklahoma Fashion Museum Collection

1870s Black Silk Faille Shoulder Cape

Category: Shoulder cape

Acquisition # 190.93.11.K

Condition: Poor

Estimated size: 6

Manufacturer: Joseph Beifeld, New York

Donated by: Mr. Haywood Vaughan (Ardmore, OK), July 17, 1993

Description: This black woman's shoulder cape has a high satin collar, black beadwork on the 2 top tiers, and green satin trim. It was restored by Glen Weatherly who completely lined the garment. A mouse had eaten large holes in it, so he covered the missing parts and added a rose and green satin ruffles to give it the same color.



Shoulder & neck detail

Acq # 190.93.11.K
 Size: about 6
 Co: unknown
 Don: Haywood Vaughan
 Date: 1840s
 Desc: Black silk
 faille shoulder
 cape. Green satin
 trim & black bead
 & beads.
 Restored. (over)

Glen Weatherly
 completely lined the
 garment & mouse
 had eaten large
 holes in it, so I
 covered the missing parts
 & added a rose &
 green satin ruffles
 to give it some
 color.
 2012.001.0040

Oklahoma Fashion Museum Collection

1880s Black Cape and Skirt

Category: Cape and Skirt

Acquisition #21.85.2.B

Condition: Fair, Fragile

Estimated size: 4-6

Designer: Unknown

Store Tag: None

Donated by: Peggy Rosamond (wife of Bert Rosamond), August 10, 1985

Description: A black cape and skirt in black lacey net and taffeta. The **Cape** has a high neck, several layers of lace and taffeta, and a large taffeta bow. The long **skirt** was designed to be worn with a bustle.



Cape detail showing beading



Some of the cape lace



Lace net on skirt front pan-



Skirt ruffles in back



Oklahoma Fashion Museum Collection

1920s Long Apricot Silk Shawl with Fringe

Category: Shawl

Acquisition #161.89.3.C

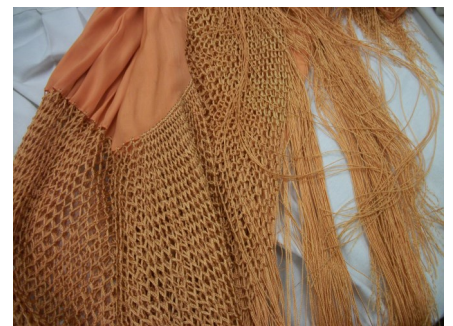
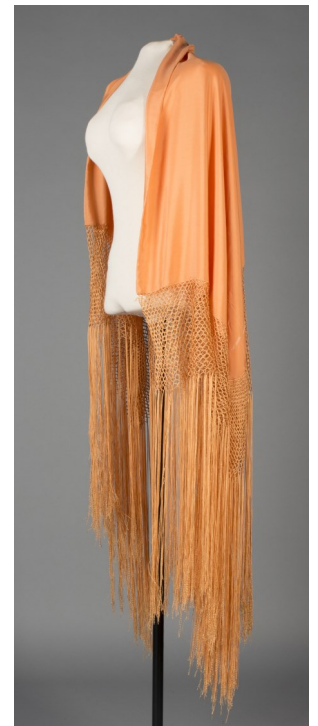
Condition: Fair

Store Tag: None

Designer: Unknown

Donated by: Mr. Haywood Vaughn (Ardmore, OK), Nov. 12, 1989

Description: An apricot silk shawl/scarf with very long fringe at the bottom. This item is stored in a wardrobe archival storage box.



Oklahoma Fashion Museum Collection

1920s Large Fringed Beige Silk Shawl

Category: Scarf

Acquisition #189.93.15.N

Condition: Good

Estimated size:

Designer: Unknown

Store Tag: None

Donated by: Frances Logan "Ruth" Frazier (wife of Jay Frazier), July 7, 1993

Description: A large beige silk scarf/shawl with red and blue floral designs. It has long fringe along all the edges and a few stains. This type of accessory from the 1920s was worn over dresses.



Acq. # 189.93.15.N
Cat: —
Des: —
Don: Ruth Frazier
Dec: 20's
Item: large fringed
beige silk scarf
red & blue print
designs,
accessory of the 20's
worn over dresses

Oklahoma Fashion Museum Collection

1950s Grey Wool and Black Fur Stole by Castillo of Spain

Category: Stole

Acquisition #65.86.6.A

Condition: Very Good

Dimensions: 18" wide x 90" long

Designer: Castillo of Spain

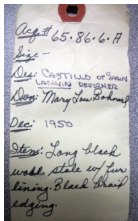
Store Tag: None

Donated by: Mary Lou Bohnard , April 5, 1986

Description: A long black wool stole with black fur lining. It has black braid around the edges, and a pocket on the fabric side. The pocket has a flap with black braid edging. There is one small tear in the fur.



Fabric side



Pocket

Fur side



Oklahoma Fashion Museum Collection

1950s Navy Blue Long Stole with Fringe by Davidow

Category: Stole

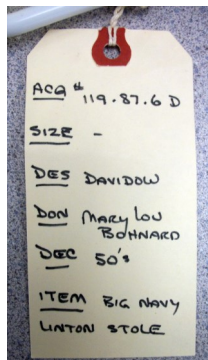
Acquisition #119.87.6.D

Condition: Excellent

Designer: Davidow

Donor: Mary Lou Bohnard, November 11, 1987

Description: Big navy blue linton stole. It measures 51" wide by 91" long and has fringe on the ends.



Oklahoma Fashion Museum Collection

1950s Black Knit Stole by Bonnie Cashin

Category: Stole

Acquisition #119.87.6.E

Condition: Excellent

Store tag:: none

Designer: Bonnie Cashin

Donated by: Mary Lou Bohnard, November 11, 1987

Description: A hand knit, long black wool stole or wrap. It's 23" wide and 100" long.



Short Evening Jackets

Oklahoma Fashion Museum Collection

1885-1890 Brown Velvet Dolman Mantelet and Capelet

Category: Jacket and capelet

Acquisition #159.89.10.J

Condition: Fair

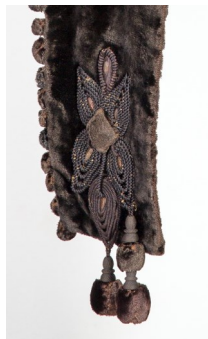
Estimated size: 4-6

Donated by: Haywood Vaughan, Ardmore, OK, October 16, 1989

Description: This tuxedo style brown velvet mantelet has a high collar, long bell sleeves, a 3 loop closure in the front, and long tails (lappets) in the front. The sleeves and edges of the lappets have brown mink balls. The bottom of the tails have decorative braid, and there is pocket on the underneath side of one of the tails. A matching shoulder cape (capelet) with a hook and eye closure at the neck is part of this ensemble. A very unique jacket.



Mantelet with Capelet



Front detail



Oklahoma Fashion Museum Collection

1920s Evening Chinese Robe

Category: Chinese Robe

Acquisition #190.93.11.I

Condition: Excellent

Estimated size: 8-10

Designer: Unknown

Store Tag: None

Donated by: Mr. Haywood Vaughan (Ardmore, Okla.), July 17, 1993

Description: A black Chinese robe with multi-colored embroidery. It has 3/4 length sleeves, slits on each side, a V neck and a high collar. The front opening has 4 blue frog fasteners, and blue piping is on the sleeves and around all edges except for the sleeve ends.



Sleeve detail



Front Detail

Oklahoma Fashion Museum Collection

1950s Black Tuxedo Jacket

Category: Jacket

Acquisition #105.87.12.H

Condition: Good

Estimated size:

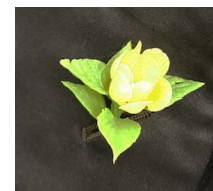
Inside Tag: Richman Brothers

Donated by: Mrs. Lawrence Mayfield, July 10, 1987

Description: A black wool tuxedo with black satin lining in the bodice and inside the tails. It has 6 satin buttons in front (3 on each side) with 28" long tails. It has long sleeves with 3 buttons on each sleeve, and the back has 2 buttons where the tails are attached. A small yellow flower is on the left lapel. The inside of the sleeves have white satin lining. It is in good condition but some of the tail lining has some slight tears.



Acq# 105.87.12.H
Size:
Des:
Don: Mrs Lawrence
Mayfield
Des:
Item: A man's
black tuxedo



Oklahoma Fashion Museum Collection

1970s Black Balloon Evening Jacket by Galanos for Amelia Gray

Category: Balloon Jacket

Acquisition #74.86.21.Q

Condition: Excellent

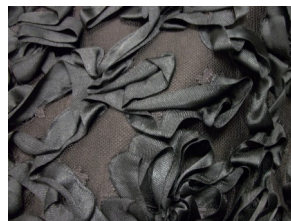
Estimated size: 8-10

Designer: Galanos for Amelia Gray, Beverly Hills

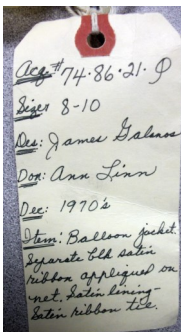
Store Tag: None

Donated by: Ann Simmons Alspaugh (formerly Mrs. James Paul Linn), July 6, 1986

Description: Black balloon jacket with separate black satin ribbon applied on net. It has black satin lining and black satin ties in front. A dramatic piece.



Ribbon applique detail



Tie detail

Short Evening Coats

Oklahoma Fashion Museum Collection

1930s Black Velvet Evening Coat with White Ermine Collar

Category: Evening Coat

Acquisition #189.93.15.B

Condition: Fair

Estimated size: 10

Designer: Unknown

Donated by: Frances Logan "Ruth" Frazier (wife of Jay Frazier) July 7, 1993

Description: This long black velvet coat has buckram between the black velvet and the white lining. It has long sleeves and a white ermine collar is attached around the neck. Some of the lining is coming loose from the front.



Acq. #189.93.15. B
Size: 10
Des: unknown
Don: Ruth Frazier
Des: 30's
Item: Black velvet
evening coat,
w/ white ermine
collar - No buttons
or other trim.

Oklahoma Fashion Museum Collection

1950s-60s Brocade Evening Coat with Brown Mink Collar & Cuffs

Category: Evening Coat with Fur

Acquisition #77.86.20.D

Condition: Excellent

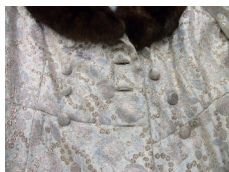
Size: 12

Designer: Unknown

Store Tag: None

Owned by: Virginia Piersol Dulaney (wife of Luther T. Dulaney)

Description: An evening coat in pastel blue, pink and gold brocade fabric. It is double-breasted with 8 covered buttons with covered button holes in front and 2 snaps. It has slit pockets in the front seams, a high waist, 4 covered buttons on the long sleeves. The collar and cuffs are in brown mink, and the coat has a light blue lining. There are some slight perspiration stains. Donated by Tom & Sylvia Dulaney, Dec. 28, 1986.

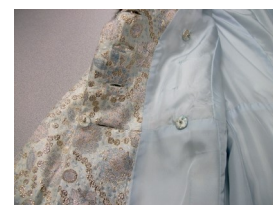


Front opening

Inside snaps



Cuff detail



Perspiration stains



D
Acq# 77.86.20.D
Size: 8-10
Don: Virginia Dulaney
Dis: 4-02
Item: Pastels of gold
brocade fabric
evening coat w/ 8
mink collar & cuffs
& button double
breast



View under the lining

Oklahoma Fashion Museum Collection

1960s Short Gold Lace Evening Coat

Category: Mini Coat/Dress

Acquisition #74.86.21.B

Condition: Excellent

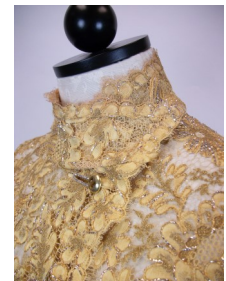
Estimated Size: 6-8

Designer: possibly Valentino

Estimated Date: mid 1960s

Donated by: Ann Simmons Alspaugh (formerly Mrs. Jimmy Paul Linn), July 6, 1986

Description: Re-embroidered gold lace evening coat. It has an asymmetric opening with 8 gold buttons in front with a lace belt around the back and above the waist. The belt fastens onto 2 gold buttons in front. It was worn with a gold lame' with silk overlay mini dress.



Acq# 74.86.21. B
Size: 8-6
Des: Valentino?
Don: Ann Linn
Des: mid 60s
mini coat & dress
Stem: Re-embroidered
gold lace coat dress
for evening. The
dress is gold lame' w/
silk overlay mini
dress with it.

Oklahoma Fashion Museum Collection

1960s Navy Blue Silk with Velvet Evening Coat by Dynasty

Category: Evening Coat

Acquisition #78.86.20.M

Condition: Excellent

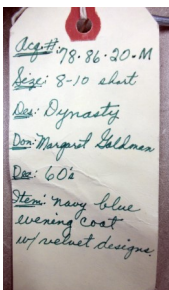
Estimated size: 8-10

Designer: Dynasty, made in Hong Kong

Store Tag: None

Donated by: Margaret "Babe" Goldman (wife of "Syl" Nathan Goldman), Aug. 20, 1986

Description: A navy blue evening coat with black velvet designs. It has seam pickets, turned up wide cuffs and a wide front facing which folds over at the neck. The coat is blue satin lining.



Oklahoma Fashion Museum Collection

1960s White Evening Coat

Category: Coat

Acquisition #132.88.12.K

Condition: Good

Estimated size: 12

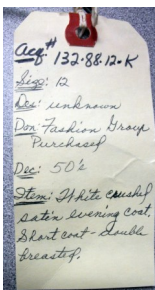
Designer: Unknown

Store Tag: Saks Fifth Avenue

Donated by: Fashion Group, Inc. of Oklahoma City

Union Label: Nat'l Board Coat & Suit Industry

Description: A white evening coat of fabric with the look of astrakhan lamb. It has long sleeves, a collar, and seam pockets. It is double breasted with 8 covered buttons. It has white satin lining with foam attached underneath, some of which is separating.



Foam under the lining

Oklahoma Fashion Museum Collection

1960s Black Wool Evening Coat by Martha

Category: Evening Coat

Condition: Excellent

Designer: Martha

Owned by: Vivian Nichols Coyle (wife of John W. Coyle, Sr.)

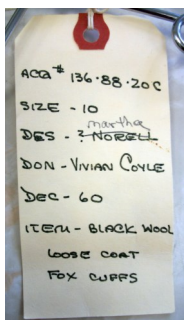
Acquisition #136.88.20.C

Estimated size: 10

Store Tag: None

Donated: June 25, 1988

Description: A black wool loose coat, 3/4 length. It has long sleeves with black fox fur cuffs and no collar, and black lining.



Oklahoma Fashion Museum Collection

1960s White Brocade Evening Coat by Originala

Category: Evening Coat

Acquisition #154.89.4.A

Condition: Very Good

Estimated size: 6

Designer: Originala

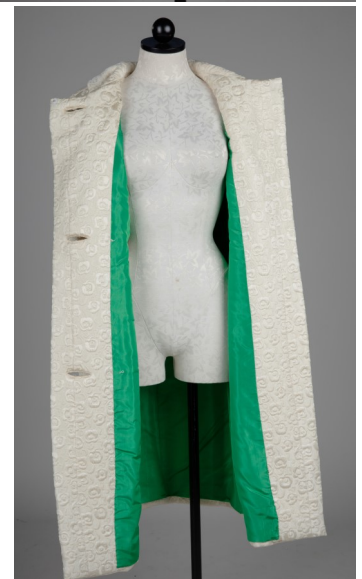
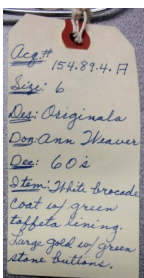
Store Tag: Balliets, Okla. City

Donated by: Ann Weaver, Feb. 7, 1989

Description: A white brocade, long sleeved evening coat with a wide collar and bright green taffeta lining. It has an attached cream satin belt, and is double breasted with 6 large green stone and gold buttons.



Button detail



Oklahoma Fashion Museum Collection

1960s Pink Slipper Satin Evening Coat by William Fox

Category: Evening Coat

Acquisition #201.16.7

Condition: Very Good

Estimated size: 12-14

Designer: William Fox, New York

Store Tag: Balliet's, Okla. City

Donated by: Unknown, found in the collection

Description A pink slipper satin evening coat. It has a wide collar, 3/4 length sleeves, and seam pockets. The front has 5 covered buttons with bound buttonholes. The inside has pink satin lining. There are some minor stains on the front and the back.



Long Evening Coats & Capes

Oklahoma Fashion Museum Collection

1920s Navy Blue Wool Cape with Beige Fox Fur Collar

Category: Cape

Acquisition #107.87.1

Condition: Good

Estimated size:

Designer: Unknown

Store Tag: Bonwit Teller & Co., Philadelphia

Donated by: Central State University (UCO), July 22, 1989

Description: A full length, navy blue wool cape with beige lining and a beige fox fur collar. It has a neck tie closure, and the lining has an inside pocket.



Acq # 107.87.1
Size 10
Des.
Don. C.S.U.
DESC. NAVY CAPE
BGE. FOX COLLAR
ITEM
CAPE
DEC.-20s



Pocket inside cape

Oklahoma Fashion Museum Collection

1920s Black Satin Long Evening Coat

Category: Evening Coat

Acquisition #(s): 190.93.11.H

Condition: Good

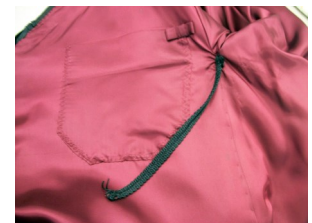
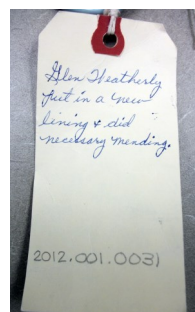
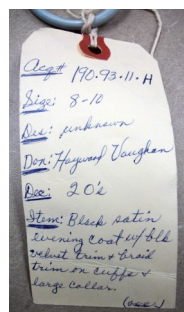
Estimated size: 8-10

Donor: Mr. Haywood Vaughan (Ardmore, Okla.), July 17, 1993

Description: Black satin evening coat with black velvet trim and braid trim on cuffs and large collar. It's longer in back, has long sleeves and a large collar covering the shoulder. The coat closes on the left side with 2 ties, and on the right outside with 3 black velvet buttons and braided loops. There are buttons on each sleeve and down the sides. The lining has been replaced and is a burgundy wine colored satin. There is an inside pocket on the right front.



Back detail



Lining

Oklahoma Fashion Museum Collection

1920s Long Black Velvet Evening Coat with Attached Cape

Category: Evening Coat

Acquisition# 201.16.8

Condition: Poor

Estimated size: 10-12

Designer: Unknown

Store tag: Bonwit & Teller Co., Fifth Ave., New York

Donated by: Unknown

Description: A black velvet full length evening coat with beading in swirling patterns on the outside, 3/4 sleeves in pink satin with black velvet cuffs. A short cape is attached which has beaded designs on 2 ends. It has a light pink satin lining with an inside pocket. The lining is in shreds but still attached.



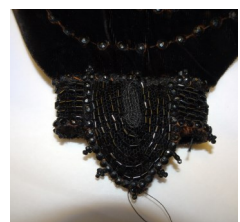
Beading on outside



Damage on neckline



Inside pocket



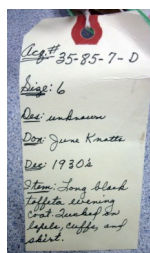
Beading on cuff

Oklahoma Fashion Museum Collection

1930s Long Black Taffeta Evening Coat

Category: Evening Coat Acquisition #35.85.7.D
Condition: Excellent Estimated size: 6
Designer: Unknown Store Tag: None
Donor: June Knotts, (wife of Max L. Knotts), Nov. 10, 1985

Description: A long black taffeta evening coat with long sleeves and a large collar. The sleeves have a squared out shoulder then puffs out and narrows at the cuff, which has vertical tucks. The collar is high in the back with wide lapels in the front that have tucks. The waist is fitted, and the skirt sides have horizontal fabric tucking. The coat closes with a loop and button, but the button is missing.



Oklahoma Fashion Museum Collection

1950s Highbrow Avantgarde Style Long Black Velour Evening Cape

Category: Cape

Acquisition #191.93.5.A

Condition: Very Good

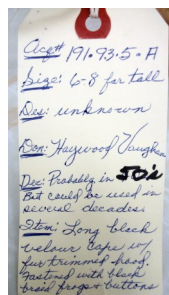
Estimated Size: 6-8 Tall

Designer: Unknown

Inside Tag: Highbrow Avant-garde Style

Donated by: Mr. Haywood Vaughan (Ardmore, Okla.), July 17, 1993

Description: A long black velour cape with a fur trimmed hood. It fastens with 3 black braid frogs and buttons in front. It has black lining, and slit pockets in front. The hem needs re-tacking in one place.



Slit pocket



Front detail

Oklahoma Fashion Museum Collection

1970s Long Black Velvet Evening Coat with Fur Lined Hood

Category: Evening Coat

Acquisition #18.85.10.8

Condition: Fair

Estimated size: 8-10

Designer: Unknown

Donated by: Cindy Reimer, August 1, 1985

Description: A long black velvet evening coat with a hood lined with cream fur. The coat has long sleeves, and the word "Bayfield" is written inside at the neckline. The coat closes with 2 large covered buttons and loops, with a velvet tie at the hood. The coat has white lining with 2 straps inside.



Inside view



Hood & Ties

Acq. # 18.85-10-8
Size: 8-10
Des: un.
Don: Cindy Reimer
Dec: any period 1970s
Stm: Black velvet evening coat. White satin lining.

Furs

Oklahoma Fashion Museum Collection

1930s White Fox Fur Neck Piece

Category: Fur neck piece

Acquisition #165.90.3.B

Condition: Fair

Designer: Unknown

Donated by: Okla. Fashion Group, Inc.

Store Tag: Al Rosenthal's Inc.

Description: A beige/off-white single fox fur piece with feet and tails and lined.



Acq # 165.90.3.B
Decade: 1930s
Item: beige single
fox fur piece with
feet & tails
Don: Fashion Group Inc.

Oklahoma Fashion Museum Collection

Late 1940s-early 1950s Autumn Haze Mink Fur stole

Category: Stole

Acquisition #67.86.10.J

Condition: Excellent

Estimated size: Small

Designer: Unknown

Store Tag: Graggs of Wichita

Donated by: Dorothy Ivins, May 3, 1996

Description: Autumn haze mink stole in a greyish color. It has green lining with a rose design, pockets, and has "HAM" embroidered inside. A label inside the right pocket reads: "Fur label authority, consumer FLA protection, manufactured under fair label standards".



Acq# 67.86.10.J
Size: small
Des: unknown
Don: Dorothy Ivins
Des: late-40s or early 50s
Stem: Mink stole -
Autumn Haze.
Greyish color.

Oklahoma Fashion Museum Collection

1941 White Tipped Silver Fox Fur Jacket

Category: Fur jacket

Acquisition #95.86.2.A

Condition: Poor

Estimated size: Small

Designer: Unknown

Store tag: Julius Garfinkel & Co., Washington

Donated by: Aggie Jo Millard, sister of Louise Matthews, Dec. 18, 1986

Description: White tipped silver fox fur jacket with black lining. Black fabric on the sides and under the long sleeves. The sleeves open underneath with snaps to close. The fur is separating and is in poor condition.



Separating fur

Acq #95.86.2.A
Size: small
Dec: ?
Don: Aggie Jo Millard
Sister of Louise Matthews
Dec: '41
Item: Silver Fox
fur jacket. White
tipped.



Inside sleeve

Oklahoma Fashion Museum Collection

1940s Brown Mink Stole & 3 Piece Fur Neck Wrap

Category: Mink stole

Acquisition #165.90.3.A

Condition: Good

Estimated size: 8-10

Designer: Unknown

Store tag: Balliets, Inc., Okla. City, OK

Donated by: Oklahoma Fashion Group, Inc., April 10, 1990

Description: Brown mink stole with black lining, shoulder straps, inside pockets and a collar. The name "Audrey Reed" is embroidered inside. It has a fur neck wrap with 3 fur pieces.



Acq. # 165.903A
Don: Fashion Group
Inc.
Decade: 1940s
Item: brown mink
stole, 3 fur
pieces. Bought
at Balliets

Audrey Reed

BALIETS, INC.
OKLAHOMA CITY, OK

Oklahoma Fashion Museum Collection

1940s-50s Brown Sable Neck Wrap

Category: Furs

Acquisition #165.90.3.C

Condition: Good

Estimated size: n/a

Designer: Unknown

Donated by: Fashion Group, April 10, 1990

Description: A fur neck wrap made with 4 sable skins which crosses double across the breast. The skins have head and feet attached.



Acq. # 165.90.3.C.
Decade: 1940s-50s
Don': Fashion Group Inc
Item: 4 sable skins
w/ head & feet /
double across breast.



Oklahoma Fashion Museum Collection

1940s Brown Ermine Fur Coat

Category: Coat

Acquisition #174.90.2.B

Condition: Good

Estimated size: 10-12

Designer: Unknown

Store Tag: Halliburton's, Okla. City

Donated by: Ann Simmons Alspaugh (formerly Mrs. Jimmy Paul Linn), Aug. 10, 1990

Description: A full length brown ermine mink coat with long sleeves with cuffs, no collar, shoulder straps, and shoulder pads. The name "Lois" is embroidered inside.



Acq # 174.90.2.B
Size:
Don: Lucy, Mrs Dan
Lynn Ann
Item: full length brown
ermine fur coat
no collar



Oklahoma Fashion Museum Collection

1950s Brown Mink Fur Muff

Category: Fur Muff

Acquisition #43.85.4.D

Condition: Excellent

Dimensions: 9" wide., 6" high

Designer: Unknown

Store Tag: None

Donated by: Ruth Commander (Mrs. A.C.) - donated 11/25/1985

Description: A brown mink fur muff with brown satin lining and a brown satin wrist strap. The edges of the lining on the outside have black decorative stitching. The outside of the muff has a metal zipper and a pocket.



Oklahoma Fashion Museum Collection

1950s Black Persian Lamb Caplet

Category: Fur Caplet

Acquisition # 181.91.4.A

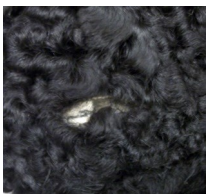
Condition: Poor

Estimated size:

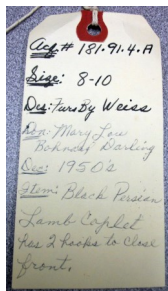
Designer: Furs by Weiss, Inc., Cleveland

Donated by: Mary Lou Bohnard Darling, July 1, 1991

Description: A black Persian lamb caplet with a 2 hook front closure. It has an attached collar, 2 front slit pockets, and lining in black satin with white flowers. Embroidered inside is "Josephine McSweeney". There are several rips in the fur.



Fur Damage



Lining detail

Oklahoma Fashion Museum Collection

1950s Blue Iris Mink Coat

Category: Coat

Acquisition #188.93.4.A

Condition: Good

Estimated size: 8-10

Designer: Custom Furrier, Leonard Abel Furs, Oklahoma City

Owned & Donated by: Margaret Berry Blair, (wife of H. Henley Blair), April 20, 1993

Description: A blue iris mink coat, double breasted with a collar, pockets, lining and 4 buttons. The donor's name is embroidered inside. There are some stains on the jacket lining and the hem needs re-tacking. It has a matching mink hat which was designed by Lloyd Wright.



Lining

188.93.4.A
Size: 8-10
Des: made in OKC
Don: Margaret Blair
Des: 50s
Notes: Double Breasted
grey mink
Pocket w/ collar
& lapels
Matching grey hat

Matching Hat



Oklahoma Fashion Museum Collection

1950s Short Brown Mink Cape and Hat

Category: Fur cape

Acquisition #188.93.4.C

Condition: Excellent

Estimated size: 8

Designer: Unknown

Store tag: Al Rosenthal's, Okla. City

Donated by: Margaret Berry Blair (wife of H. Henley Blair), April 20, 1993

Description: A short brown mink cape with a collar, arm holes, and brown lining. "Margaret Hand" is embroidered inside. It has a matching brown mink hat designed by Lloyd Wright (Hat #309)



Matching Hat



Embroidered name

Oklahoma Fashion Museum Collection

1950s Black Fur Jacket

Category: Jacket

Acquisition #191.93.5.C

Condition: Fair

Estimated size: 8-10

Designer: Unknown

Store Tag: Nieman Marcus

Donated by: Mr. Haywood Vaughan (Armore, Okla.), July 17, 1993

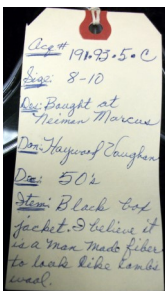
Description: A black fur box jacket made to look like astrakhan, a newborn lamb pelt.. It has a wide, notched collar, long sleeves with grosgrain ribbon as trim, 2 slit pockets, and 2 large oblong buttons with spirals. The jacket is fully lined and has a fur label authority tag inside. Also inside is the monogram "D.W.N.". Some of the fur is damaged.



Embroidered initials inside



Button detail



Oklahoma Fashion Museum Collection

1960s Lacota Seal Coat by Birger Christensen

Category: Seal Coat

Acquisition #78.86.20.T

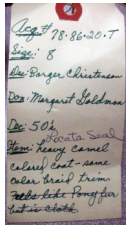
Condition: Poor

Estimated size: 8

Designer: Birger Christensen, KGL. Hofleverandor, Kobenhavn

Owned by: Margaret "Babe" Goldman, wife of Sylvan "Syl" Nathan Goldman, August 20, 1986

Description: A heavy Lacota Seal camel colored coat. It has long sleeves with 1 brown button, a wide collar with trim, a 5 button front opening, and seam pockets. There are 4 fake pockets with tabs and trim on the front. The coat has brown lining with an inside tie and loop, and a long back slit. There is a rip in the right sleeve. Inside the lining is engraved with the initials MKG for Margaret Katz Goldman. The coat was made in Denmark.



Owner's initials



Oklahoma Fashion Museum Collection

1960s Brown Mink Street Length Cape

Category: Mink Cape

Acquisition #105.87.12.F

Condition: Fair

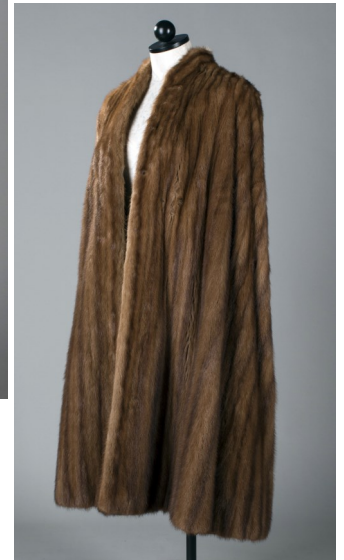
Estimated size: 8-10

Designer: Unknown

Store Tag: Saks-Fifth Avenue

Donated by: Mrs. Lawrence Mayfield, July 10, 1987

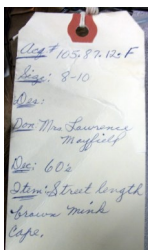
Description: A street length brown mink cape with brown lining, shoulder straps, and one inside pocket. The name "Karin" is embroidered inside. The seam is ripped in the right side lining.



Embroidered name



Ripped seam in lining



Oklahoma Fashion Museum Collection

1960s Brown & White Calfskin Coat by Alexandrine

Category: Coat

Acquisition #185.91.2.A

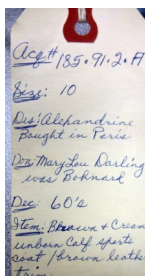
Condition: Poor

Estimated size: 10

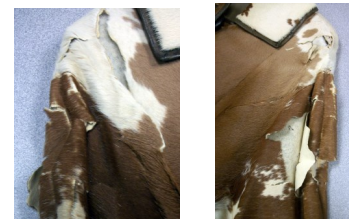
Designer: Alexandrine, 281. R. Saint-Honore, Paris

Donated by: Mary Lou Bohnard Darling, Dec. 20, 1991

Description: According to the original acquisition tag, this coat is made out of a brown and cream unborn calf skin. It has brown lining, leather trim, 3 large front leather buttons, front pockets with flaps, and cuffs with buttons with leather lining that can be turned up. The skin is torn in several places and it is currently stored in an archival wardrobe box.



Tears in the fur



Oklahoma Fashion Museum Collection

1969 Norwegian Blue Fox Fur Coat

Category: Fur Coat

Acquisition #198.94.3.C

Condition: Excellent

Estimated size: 10-12

Designer: Unknown

Store Tag: None

Donated by: Mary Lou Bohnard Darling, Dec. 5, 1994

Description: A full length Norwegian blue fox fur coat. It has a wide collar, long sleeves, pockets and a beige lining.



Acq. # 198.94.3.C
Size: 10-12
Des:
Don: Mary Lou Darling
Dec: 1969
Item: Full length
Blue Fox Fur Coat
Norwegian

Oklahoma Fashion Museum Collection

1975 White Mink Fur Shrug

Category: Fur Shrug

Acquisition #49.86.11.I

Condition: Excellent

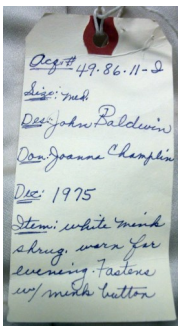
Estimated size: Medium

Designer: John Baldwin

Store Tag: None

Donated by: Joanna M. Champlin, Jan. 15, 1986

Description: A white mink shrug work for evening. It fastens with a mink button and is lined. Embroidered inside are the initials JNB.



Embroidered initials inside

List of Designers

Designer Name	Page(s)
Alexandrine	88
Bardley	10, 24
Ben Zuckerman	13
Birger Christensen	86
Bonnie Cashin	22, 52
Calvin Klein	6
Carlye	9
Castillo of Spain	50
Count Romi Ltd.	26, 31,37
Cuddle-Coat	20
Davidow	51
Dynasty	62
Field & Stream	11
Galanos for Amelia Gray	53, 57
Ginala	23
Jim Baldwin for Young Elegants	19
Lawrence of London	39
Martha	64
Modele Jeanne Lanvin	28
Norman Norell	18
Originala	14, 65
Pauline Trigere	5, 25, 35, 36
Roberta di Camerino	32, 33, 34
Saint Laurent	42
Shannon Rodgers for Jerry Silverman	29
Tiktiner of France	41
William Fox	66

List of Donors

Alspaugh, Ann Simmons (aka Ann Linn, Ann Cox)

Ann was born in Duncan, Okla., she was a civic leader, and was inducted into the Oklahoma Hall of Fame in 1997. Her family was in the oil and gas business. Her father, Louis Bascom (L.B.) Simmons, founded the Rocket Oil Company of Duncan, and the Rock Island Refining Companies. Ann married and divorced 3 men: 1) Paul Anthony Andres, an insurance company executive, 2) James “Jimmy” Paul Linn, a prominent Okla. City lawyer, and 3) Marcus Lafayette Cox, an internal medicine doctor in Okla. City

Barrett, Arden Jayne (wife of Dr. Paul Arthur Barrett)

She lives in Nichols Hills in Okla. City. Her husband was a family physician in Bethany, Okla.

Blair, Margaret Berry (wife of H. Henley Blair, previously married to Wilson D. Hand)

She was active in community service, helped organize archives at the Heritage Association, served as a docent at the Cowboy Hall of Fame, presided as president of Presbyterian Hospital Auxiliary, and volunteered at the Oklahoma Museum of Art. During WWII she was an aircraft communicator under the Civil Aeronautics Administration (now the FAA).

Bohnard, Mary Lou

She was a couture buyer for John A. Brown’s upscale women’s wear department.

Burns, Ellen Evans (donated by Libby Burns)

She was active in the arts and music and is the author several plays, including “Finer’n Fiddle Dust,” which was based on the early days of Oklahoma after the opening of the Cherokee Strip.

Champlin, Joanna Marie

She is the daughter of Joe Noble and Jane Edwards Champlin and lives in Oklahoma City. The family is part of the Champlin oil company.

Coe, Elizabeth M. (wife of Charles R. Bucket” Coe)

Her husband was an amateur golfer nationally and internationally.

Commander, Ruth Margaret McKissick (wife of Augustine Cates (A.C.) “Gus Commander

He established the Commander Construction Company in 1957.

Coyle, Vivian Nichols (wife of John W. Coyle, Sr.)

Her mother was Alma Nichols, wife of Gilbert C. Nichols who developed Nichols Hills in Oklahoma City.

Darling, Mary Lou Bohnard (wife of Charles Darling)

She was a fashion buy at Higbee's in Cleveland, Kaufman's in Pittsburg, and Gimbels in Philadelphia. In 1973 she moved to Okla. City and became the buyer of John A. Brown's upscale Women's Wear Dept.

Dulaney, Virginia Piersol (wife of Luther T. Dulaney) donated by Tom & Sylvia Dulaney

She was a trustee of Okla. City University and the Cowboy Hall of Fame.

Durland, June Kathryn Cain (wife of Jack Raymond Durland)

Her father founded the Cain's Coffee Company. Her husband was a lawyer. She and her husband owned an art gallery in Nichols Hills in Okla. City

Frazier, Ruth Frances Logan (wife of Jay Frazier)

She was a homemaker, and was invited to go to Washington, D.C. as one of 100 delegates to advise builders, manufacturers and designers on what homemakers wanted. Her husband was a prominent insurance man in Okla. City. He was in the army air corp and was an electrical engineer.

Goldman, Margaret Katz "Babe" (wife of Sylan "Syl" Nathan Goldman)

She was the daughter of the founder of Katz Department Store in Stillwater, Okla. Her husband was the inventor of the shopping cart.

Greenwood, Kathryn M.

She established the Center for Apparel Marketing & Merchandising.

Harper, Mary Jo Pool (wife of David Harper)

She worked at Balliet's in Okla. City.

Hudson, Miss Patti - *no other information available*

Ivins, Dorothy (wife of Drayton Walford Ivins, Jr.)

She was a free-lance fashion illustrator who began the "Dorothy Ivins Advertising Studio" in Oklahoma City. She was a free-lance fashion illustrator who began the "Dorothy Ivins Advertising Studio" in Oklahoma City. She was a supporter of the arts and was vice-president of the Okla. City Art Center, and headed the Speaker's Bureau for the Women's Committee of the Oklahoma City Symphony Orchestra. She was inducted into the City's Fashion Hall of Fame. Her husband worked for Kerr-McGee and was head of the Trust Dept. at Citizen's National Bank.

Jernigan, Betty Baker (wife of Ernest Deloy Jernigan, Jr.) from Chickasha, Okla.

She was from Chickasha, Okla. and her husband was in the Air Force.

Johnston, Cleo

She worked at Balliet's, and she was the mother Lolly Sweeney (who still works at Balliet's).

Kimball, Mary Jane “Janie” (wife of Paul Marion Kimball)

Her husband was a lawyer in Oklahoma and was a partner in Kimball, Wilson and Walker. She was an interior designer for J. Kimball Interiors in Oklahoma City.

Knotts, June Buckner (wife of Max L. Knotts)

She was an artist in Okla. City and volunteered in many organizations. She helped manage one of the first Decorators Showcase Homes for the benefit of the Oklahoma City Symphony, and started and managed the gift shop for the Oklahoma Museum of art. He was an engineer and worked for Oklahoma Natural Gas.

Loving, Carrol McLemore (wife of William Albert Loving)

She was President of Love and Loving Trucks in Oklahoma City in the 1930s. In the 1940s she bought out the business after a divorce and ran the business as Loving Trucklines. She was a nominee in 1982 for the Oklahoma Hall of Fame.

Mayfield, Mrs. Lawrence - *no other information available*

Millard, Aggie Jo (wife of Ray E. Millard)

She had a degree in Music Ed and English and Spanish and taught. Her husband was a navy Captain and they traveled extensively.

Notson, Althea Louise

She worked for Mrs. Edna Balliet, the first owner of Balliet's in Okla. City, as a couture buyer.

Reimer, Cindy- *no information is currently available.*

Russell, Joniel “Jo” Foster (wife of Harold L. Russell)

She was a teacher, a debate coach, and a community volunteer. He was an accountant in the oil and gas, and banking industries.

Willett, Loyce Jean Muhlhausen

She worked for the Oklahoma City Public Schools and taught at the Oklahoma College for Women. She was also an adjunct faculty member at the University of Central Oklahoma. Her daughter, Kathy Black, donated an item.

Vaughan, Mr. Haywood (from Ardmore, OK)

Mr. Vaughn was very involved with Ardmore Little Theatre in Ardmore, Okla. He was the head costumer of the Ardmore Theater Group and an authority on vintage clothes. He donated many items to the collection, both antique and vintage.

Weaver, Ann - *no information currently available*

Wilson, Mary Frances Abel (wife of Tom B. Wilson)

She was involved with the DAR, the Rotary Anns, and other organizations. Her husband was employed by Victor L. Phillips Co., and later worked at Clarence L. Boyd & Dahlgren Construction.