

**Women's Hats  
in the  
Oklahoma Fashion Museum Collection  
at the University of Central Oklahoma**

**Volume 1:  
1800s through 1940s/50s**



1900-1916 Velvet Hat #9



1920s Hat by Jean Tess, #255



1930s-40s Hat #209



1940s-50s Hat #175

**Photos, text, and compilation by Mary Huffman  
Coordinator of Grants & Contacts  
College of Education & Professional Studies  
University of Central Oklahoma, July 2019**



**Women's Hats in the  
Oklahoma Fashion Museum Collection at the University of Central Oklahoma  
Volume 1: 1800s through 1940s/50s**

**Forward by Mary Huffman**

**History of the Collection**

In the late 1950s, several prominent Oklahoma City women in fashion-related businesses initiated contacts with The Fashion Group International, Inc. headquartered in New York. As a result, a new regional "Fashion Group, Inc. of Oklahoma City (OKC Fashion Group)" was established in the fall of 1958.

One of the goals of the OKC Fashion Group was to collect garments in order to establish a "designer costume collection" covering several decades and representing significant changes in fashion design. They collected garments and accessories from prominent women in Oklahoma. The collection was to be used by fashion marketing, costume design, drama, art, and history students. The items in the collection range from the late 1800s to the 1980s.

In 1989, the OKC Fashion Group disbanded and donated the entire collection to Central State University, which is now called the University of Central Oklahoma (UCO). The collection consists of over 800 items of clothing, 338 hats, 151 pairs of shoes, 12 pairs of boots, 50+ purses, some jewelry and gloves.

The collection was kept in storage for many years and used occasionally for class instruction in the fashion marketing program. In 2014, I began the task of inventorying the collection, documenting details of each item and photographing some of the items and details.

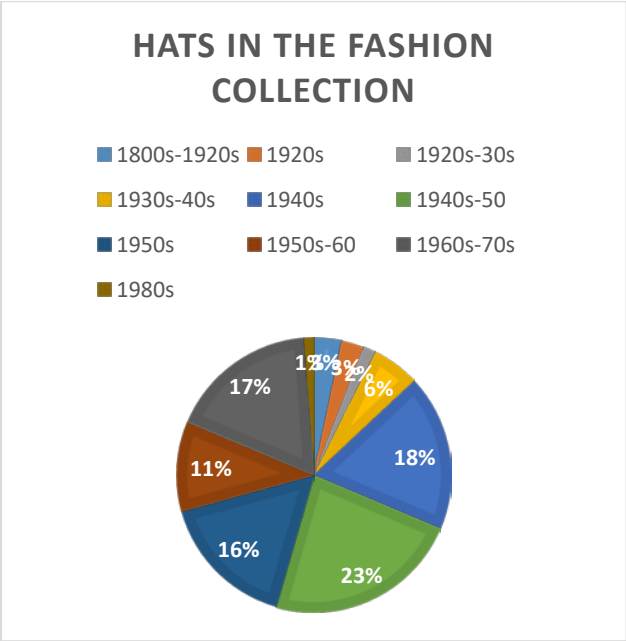
It is now 2019 and everything has been photographed, documented and inventoried. It is my sincere hope that others will find this information helpful.

**Catalog Arrangement**

The hats in the collection range in date from the late 1800s through the 1980s. The largest percentage of hats are from the 1930s through the 1970s. The following pages are arranged by decade, and then numerically by the acquisition numbers.

Since there are 338 hats in the collection the catalog is published in two volumes. Often it was difficult to determine exactly which decade a hat fit into because they were so very popular and designer and milliners made thousands and thousands of hats over the years. Deborah Miller, a textile & clothing appraiser, was very helpful in assisting me in determining the correct decade.

Below is a chart showing the different decades the hats fit into from my research, as well as the percentages of the number of hats in each category.



I sincerely hope this information is helpful to others. Hats are fun. They can make a woman wearing one feel a little bit different for a time, whether it's to be more glamorous, or spunky, funny, fashionable, or practical. Enjoy!

Mary Huffman  
Coordinator of Grants & Contracts  
College of Education & Professional Studies  
University of Central Oklahoma  
Edmond, Oklahoma

July 2019

**Table of Contents - Women's Hats**  
**Volume 1: 1800s through 1940s/50s**

		<b>Page</b>
<b>1800s-1920s</b>		
Hat #4	1800s-1900 Black & gold small hat.....	2
Hat #1	1860-1910 Victorian black mourning veil.....	3
Hat #6	1880s-1910 Black straw bonnet with ribbon ties.....	4
Hat #8	1880s-1910 Wide brimmed dark brown hat.....	5
Hat #9	1900-1916 Dark brown velvet hat with a fur flower.....	6
Hat #5	1900-1920s Black silk and net wire framed hat.....	7
Hat #2	1910-1918 Gibson Girl style hat.....	8
Hat #3	1910-1920 Black turban style hat with feathers.....	9
Hat #261	1910-1920s Black wire lace wide brimmed hat by Ethel.....	10
Hat #11	1916-1920s Black lace hat by Bluebird.....	11
Hat #10	1816-1920s Green stamped velvet cloche.....	12
<b>1920s</b>		
Hat #188	Riding helmet.....	14
Hat #206	Beige & gold skill cap with rhinestones by Avalon.....	15
Hat #252	Black wide brimmed fur felt hat with ostrich feathers.....	16
Hat #254	Grey felt hat with ostrich feathers.....	17
Hat #255	Wide brimmed black satin hat with orange feathers by Jean Tess.	18
Hat #256	Pink & orange feather headband.....	19
Hat #257	White brow headband with ostrich feathers.....	20
Hat #274	Black felt cloche with black feathers.....	21
Hat #276	Black wool felt cloche.....	22
<b>1920s-1930s</b>		
Hat #216	Brown felt cloche from Mildreds in Duncan, Oklahoma.....	24
Hat #217	Forest green beret with mink balls on top.....	25
Hat #244	Dark brown felt & satin hat with veil by Chanda.....	26
Hat #245	Red velvet derby with veil & feather by Gardner.....	27
Hat #258	Black half hat with feathers & veil.....	28
<b>1930s-1940s</b>		
Hat #12	Black felt pillbox hat with flowers.....	30
Hat #90	Black beret with tassel by Height of Fashion Hats.....	31
Hat #105	Grey & cream striped fabric hat by Eve Tartar.....	32
Hat #108	Green doll hat with feathers by Marche Hats.....	33
Hat #189	Black straw with netting & feathers.....	34
Hat #191	Navy blue hat with pink band by Sally Victor.....	35
Hat #197	Natural straw with black lace by Hattie Carnegie.....	36
Hat #198	Natural straw with black velvet and a black veil.....	37
Hat #199	Brown straw with velvet & pompoms by Grace Burney.....	38
<b>1930s-1940s (con't)</b>		<b>Page</b>

Hat #202	Natural straw with appliques by Sally Victor.....	39
Hat #209	Dark brown felt hat with veil by Sadye Landsman.....	40
Hat #213	Grey felt hat with square brim shape by Mr. John.....	41
Hat #214	Fabric multicolored turban by Emme, Inc.....	42
Hat #215	Blue & cream fabric hat & gloves by Laddie Northridge.....	43
Hat #218	Brown satin & velvet beret by Avalon.....	44
Hat #231	Multicolored green turban from Mad'Leine, Paris.....	45
Hat #224	Black skull hat with buttons by Hattie Carnegie.....	46
Hat #266	Straw sailor hat with black velvet & net by Leslie James.....	47
Hat #305	Brown wool felt hat with flowers & bows.....	48

## 1940s

Hat #7	Parkridge exclusive black straw hat with flowers.....	50
Hat #19	Dark brown skull cap from Harryson, New York.....	51
Hat #17	Brown net hat by Helen Liebert.....	52
Hat #22	Tan wool felt hat.....	53
Hat #34	Brown straw pillbox hat with multicolored flowers by Mr. D'.....	54
Hat #35	Milbrae Exclusives red flowered casque.....	55
Hat #37	Green leaf hat with gardenia flowers by Mr. Jacques.....	56
Hat #43	Brown & white feathered wire frame hat.....	57
Hat #44	Multicolored feather hat by Grace Burney.....	58
Hat #45	Brown feathered pillbox hat.....	59
Hat #46	Feathered pillbox hat from Modes Annette (Paris).....	60
Hat #47	Multicolored feathered deep crowned hat by Dajon.....	61
Hat #58	Black feathered open crowned hat.....	62
Hat #59	Black feather doll hat by I. Magnin.....	63
Hat #60	Brown feathered hat by Genevieve Bernard from Paris.....	64
Hat #77	Burgundy wool hat with fur & scarf.....	65
Hat #78	Navy blue hourglass shaped straw hat.....	66
Hat #82	Gold & cream pillbox hat by Gladys & Belle.....	67
Hat #84	Cream & beige beehive hat.....	68
Hat #86	Black straw pillbox.....	69
Hat #88	Wide brimmed black silk hat by Marche' Hats.....	70
Hat #94	Black turban by Emme, Inc.....	71
Hat #97	Gold beret with fur ball on top by Jan Leslie.....	72
Hat #98	Grey fabric cloche by Irene of New York.....	73
Hat #104	Green felt pillbox by Wilshire.....	74
Hat #109	Black fabric turban by Sonni California.....	75
Hat #115	Brown wool hat by Rivera.....	76
Hat #156	Flowered hat by Sally Victor, New York.....	77
Hat #174	Brown mink pillbox designed by Lloyd Wright.....	78
Hat #190	Green straw hat with leaves and a flower.....	79
Hat #196	Black straw with black velvet by Chanda.....	80
Hat #201	Cream straw with blue velvet band & bows.....	81
Hat #205	Beige open open crowned skull style hat by Morquez.....	82
Hat #219	Brown & black pillbox by Lilly Dache'.....	83

1940s (con't)		Page
Hat #220	Brown fabric beret by Ronnie Hats.....	85
Hat #225	Tan beret with musical notes, a Nat Frank Original.....	85
Hat #226	Black velvet hat with netting by Emme, Inc.....	86
Hat #228	Navy blue fabric tam by Betmar.....	87
Hat #232	Red & green turban.....	88
Hat #233	Navy blue calot by Lorie, NYC.....	89
Hat #234	Black velvet & satin hat by Beatrice-Martin.....	90
Hat #235	Black velvet calot.....	91
Hat #236	Yellow straw cloche with tan fabric & feathers.....	92
Hat #237	Green leaf cloche with green roses by Eve (Chicago).....	93
Hat #238	Straw sailor or skimmer hat by Gage Handcraf.....	94
Hat #239	Brown velvet hat by Lilly Dache'.....	95
Hat #240	Cream fabric beret by Mr. John Jr.....	96
Hat #241	Black astrakhan fur pillbox by Vagn, Kobenhavn.....	97
Hat #242	Small blue satin turban doll hat.....	98
Hat #243	Wire frame hat with fruit & leaves, Hat-Nip by Danciger.....	99
Hat #246	Navy blue beanie with gold button trim.....	100
Hat #248	Tan felt hat with scalloped edge by John Frederics Charmer.....	101
Hat #249	Black wool tam by Starling.....	102
Hat #251	Navy blue felt cloche from Betmar.....	103
Hat #268	Black velvet & fabric pillbox hat.....	104
Hat #269	Black velvet tam with black net from Kerr's in Okla. City.....	105
Hat #275	Brown wool felt cloche from Betmar.....	106
Hat #277	Black felt cloche with black satin bow from Betmar.....	107
Hat #283	Open crowned tan felt pillbox by Rex, Inc.....	108
Hat #300	Navy blue straw hat with veil, ribbon & paste buckle.....	109
Hat #303	Wide brimmed black straw hat, a Vera Whistler original.....	110
Hat #304	Wild brimmed brown straw with orange feathers.....	111

#### 1940s-1950s

Hat #15	Black net hat with sequins & beads.....	113
Hat #18	Black calot with swirl designs by Lorie.....	114
Hat #27	Green hat with flowers & veil by Marge Hats.....	115
Hat #36	Black open crowned casque by I. Magnin & Co.....	116
Hat #54	Black satin brimless hat with feathers by Mr. John.....	117
Hat #55	Feather pillbox with pheasant feathers.....	118
Hat #64	Blue feather bandeau by Andrea Fashions.....	119
Hat #65	Pink feather bandeau.....	120
Hat #66	Multicolored brown feather bandeau.....	121
Hat #67	White feather bandeau.....	122
Hat #72	Red straw hat by Chandra.....	123
Hat #74	Multicolored turban hat by Emme, Inc.....	124
Hat #75	Pink pillbox with black velvet by Helen Liebert.....	125
Hat #80	Black felt hat with black beads.....	126
Hat #81	Navy blue cloche.....	127
Hat #93	Straw pillbox with autumn leaves attached.....	128

1940s-1950s (con't)

	<b>Page</b>
Hat #101	Black brimless straw hat by Jan Leslie..... 129
Hat #102	Brown & orange felt hat by Veola Modes, New York..... 130
Hat #106	Yellow corduroy hat by Chanda..... 131
Hat #107	Cream straw hat with a black bow from Sherman, NYC..... 132
Hat #110	Cream turban pillbox by Grace Burney, Okla. City..... 133
Hat #111	Blue fabric pillbox..... 134
Hat #112	Cream fabric pillbox from Balliet's, Okla. City..... 135
Hat #113	Blue fabric turban from Al Rosenthal's, Okla. City..... 136
Hat #114	Brown wool pillbox by Rivera..... 137
Hat #116	Fuzzy red felt hat..... 138
Hat #131	Two tone brown hat, Maggi Originals..... 139
Hat #135	Black cellophane deep crowned straw by Elizabeth..... 140
Hat #136	Navy blue cellophane pillbox by Yvette..... 141
Hat #144	Tan felt hat with navy band by Alice May..... 142
Hat #150	Off-white fabric turban by Sally Victor..... 143
Hat #151	Wide brimmed cartwheel straw by McHenry's Hat..... 144
Hat #168	Pink satin pillbox..... 145
Hat #175	White fur & black velvet pillbox made in Paris..... 146
Hat #176	Brown mink pillbox..... 147
Hat #177	Brown fur pillbox with bow by Grace Burney, Okla. City..... 148
Hat #179	Light brown mink pillbox from Saks Fifth Ave..... 149
Hat #180	Dark brown mink pillbox, by Irene of New York..... 150
Hat #181	Champagne mink hat with satin from Al Rosenthal's..... 151
Hat #182	Deep crowned brown mink hat by Emme, Inc..... 152
Hat #183	Faux leopard fur pillbox by Maggi Originals..... 153
Hat #184	Wedding circlet with pink flowers by Kay & Guy Anderson..... 154
Hat #185	Dark brown mink hat, a Frieman Original..... 155
Hat #186	White turban with fur & satin by Lloyd Wright..... 156
Hat #192	Cream straw pillbox with bow by Mr. D'..... 157
Hat #194	Natural straw with brown velvet band by Hardesty..... 158
Hat #195	Brown straw hat designed by D. Charles..... 159
Hat #203	Natural straw with cream velvet band by Rivera..... 160
Hat #207	Small black derby by de Villar, Beverly Hills..... 161
Hat #212	Brown straw with veil & whimsical decoration by Leslie James..... 162
Hat #222	Brown felt cloche with yarn by Toni Bullocks..... 163
Hat #223	Yellow wool and navy hat..... 164
Hat #227	Black fabric beret with beads by G. Howard Hodge..... 165
Hat #263	Open crowned black wide brimmed hat..... 166
Hat #270	Black satin pillbox by Jan Leslie..... 167
Hat #301	Brown straw cartwheel hat..... 168
Hat #302	Wide brimmed plum straw hat by Blossom Hats..... 169
Hat #18-1	Black cellophane straw hat..... 170
Hat #18-2	Russian fur ushanka..... 171
Hat #18-3	Brown beaded pillbox by Alfreda, Inc..... 172
Hat #18-4	Black felt calot by Madcaps..... 173
Hat #18-5	Cream brocade pillbox by Jan Leslie..... 174

<b>1940s-1950s (con't)</b>		<b>Page</b>
Hat #18-6	Ere Nouvelle beaded open crown calot.....	175
Hat #18-7	Navy blue straw hat with daisies.....	176
Hat #18-8	Taupe cellophane straw by Alfreda, Inc.....	177
Hat #18-9	Evelyn Varon exclusive open crowned blue bow calot.....	178
Hat #18-10	Valerie Modes cream straw pillbox.....	179
Hat #18-11	Black beret with black beads by Amy.....	180
Hat #18-12	Black velvet half hat.....	181
Hat #18-16	Brown straw hat with flowers & netting.....	182
Hat #18-17	Dark navy blue straw lampshade hat.....	183
Hat #18-18	Black whimsy.....	184
Hat #18-19	Black velvet pillbox with black grosgrain ribbon.....	185
Hat #18-20	Brown straw with leaves & flowers.....	186
Hat #18-22	Brown fur pillbox by Jean Sutton.....	187
Hat #18-23	Black velvet deep crowned floppy wide brimmed hat.....	188
Hat #18-24	Multi-colored feather pillbox by Sally Victor.....	189
Hat #18-26	Gold beaded pillbox by Alfreda, Inc.....	190

## **Hat Designer Index**

**Donors**

**References**



Late 1800s —  
1920s

# UCO Fashion Museum Collection

## Late 1800s-1900 Black & Gold Small Hat

Circa: late 1800s-1910

Hat #4

Condition: Fragile, display only

Dimensions: 5.5" x 6" / 2" deep

A small black and gold small hat with a black wire frame. The outside wire is covered with black velvet, and the frame is covered with gold lace over black lace. The top has 2 wire black butterflies with sequins and beads, as well as black silk flowers and small black ostrich feathers.



UCO Fashion Museum Collection  
1860-1910 Victorian Black Mourning Veil

**Circa:** 1860-1910

**Hat #1**

**Designer:** Unknown

**Color:** Black

**Condition:** Poor—Display or research only

**Black mourning veil with a black ribbon tie. The veil material is in extremely fragile condition.**



# UCO Fashion Museum Collection

## 1880s-1910 Black Straw Bonnet with Ribbon Ties

**Circa:** 1880s-1910

**Hat #6**

**Style:** Bonnet

**Dimensions:** 7" long x 8" high / 2" deep

**Brim:** 1.5"-2" on the sides and front

**Condition:** Fragile, display only

A small black straw bonnet with 25" long black satin ribbon ties and small cream colored flowers on top of the brim. The brim has black lace underneath.



# UCO Fashion Museum Collection

## 1880s-1910 Wide Brimmed Dark Brown Hat

Circa:	1880s-1910	Hat #8	
Style:	Wide brimmed	Lining:	Black fabric
Dimensions:	11" wide / 3" deep	Color:	Dark Brown
Condition:	Fair, display only	Frame:	Wire

A wide brimmed dark brown hat with a large black silk bow in front. The under brim has folded black silk fabric and black silk flowers attached. The lining is black fabric which is gathered in the middle.



# UCO Fashion Museum Collection

## 1900-1916 Dark Brown Velvet Hat with Fur Flower

Circa:	1900-1916	Hat #9
Inside tag:	Ladies Capital Hat Shop, 508 Eleventh St. N.W., Washington, D.C.	
Dimensions:	9" wide x 10" long / 6" deep	Lining: tan fabric (in shreds)
Brim:	3/4" x 2"	Frame: Metal frame
Condition:	Fragile, display only	Band: Brown ribbon

Band: lighter brown 1" wide ribbon with streamers on the right side and tan pompoms and a big flower  
A dark brown velvet hat with a fur centered flower on one side. The band is a light brown 1" wide ribbon with streamers on the right side ending in a tan pom-pom. The brim is gathered around the edges. The inside lining is badly damaged.



# UCO Fashion Museum Collection

## 1900s-1920s Black Silk and Net Wire Framed Hat

**Circa:** 1900s-1920s

**Hat #5**

**Condition:** Fragile, display only

**Dimensions:** 11" long x 8.5" wide – opening is 4.5" x 5.5" wide

**A black wire framed hat with black netting and black silk. The crown has folded black silk in a circular design. The inside has black fabric gathered inside.**



# UCO Fashion Museum Collection

## 1910-1918 Gibson Girl Style Hat

**Circa: 1910-1918**

**Hat #2**

**Style: Gibson Girl style hat – wire frame**

**Dimensions: 11” wide – 3” deep**

**Condition: Fragile – some of the netting is broken**

**A large hat with patterned gold netting over a faded green velvet base with a 5” flower in front. It has a wire frame base.**



Inside view



Front detail



# UCO Fashion Museum Collection

## 1910-1920 Black Turban Style Hat with Feathers

**Circa:** 1910-1920

**Hat #3**

**Dimensions:** 10" long x 7" wide / 3" deep

**Color:** Black

**Condition:** Fragile, display only

**Turban style black hat with a long black ostrich feather attached on one side under a black and silver decorative buckle. Fragile – cloth damage and the top is separating from the bottom.**



Buckle detail



Damage detail



Inside view

## UCO Fashion Museum Collection

### 1910-1920s Black Wire & Lace Wide Brimmed Hat by Ethel

Designer:	Ethel, Paris, New York	Hat #261	
Material:	Wire and lace	Band:	Black velvet
Color:	Black	Lining:	Black materials
Dimensions:	23"x14" wide	Sweatband:	None
Condition:	Fair	Brim:	2" x 4" wide

Description: Black hat with a wrapped wire frame and stiff black lace covering it. The band is black velvet with a bow in the back. Some of the lace has separated on the crown.



# UCO Fashion Museum Collection

## 1916-1920s Black Lace Hat by Bluebird

Circa: 1916-1920s

Hat #11

Color: Black

Designer: Bluebird

Condition: Good

Brim: 1"-3"

Description: Black lace, soft hat almost like a hair net. It has a 1/4" black velvet ribbon band and a brim that hangs down.



# UCO Fashion Museum Collection

## 1916-1920s Green Stamped Velvet Cloche

Circa: 1916-1920s

Hat #10

Style: Cloche

Material: stamped velvet

Dimensions: 10" wide / 6" deep

Inside crown lining – blue

Condition: Fair, display only—some of the lining is missing

A green stamped velvet hat with leaf patterns. It has a wire is inside the bottom. The band around the crown is in a matching fabric.



1920s

# UCO Fashion Museum Collection

## 1920s Riding Helmet

Inside tag: Bits'n Buttons, fine saddlery and riding apparel  
Style: Riding Helmet  
Band: None  
Lining: Red fabric  
Dimensions: 6.5" wide x 10" long / 6" deep  
Condition: Poor – the inside is damaged

Hat #188  
Material: Black velvet  
Sweatband: Black leather  
Brim: Front bill 2" wide

A riding hard hat in black velvet with a bow in the back.



## UCO Fashion Museum Collection

### 1920s Beige & Gold Skull Cap with Rhinestones by Avalon

Designer:	Avalon	Hat #206	
Style:	Juliet cap	Band:	None
Material:	Fabric	Lining:	White felt
Color:	Beige & gold	Sweatband:	White grosgrain
Dimensions:	8" wide / 6 deep	Brim:	None
Condition:	Very Good		
Description:	Beige felt skull cap covered with gold netting. It has blue and green rhinestones attached in the front and on the sides. Gold braid is attached around the edge and around the crown.		



## UCO Fashion Museum Collection

### 1920s Black Wide Brimmed Fur Felt Hat with Ostrich Feathers

Designer:	Unknown	Hat #252	
Material:	Fur felt and ostrich feathers	Lining:	none
Color:	Black	Sweatband:	Black grosgrain
Dimensions:	16" wide / 7" inside	Brim:	5" wide
Inside stamp:	Mallory Fur Felt		
Condition:	Very Good		
Description:	A wide brimmed fur felt hat with black ostrich feather around the entire brim. The hat has a black chin strap.		



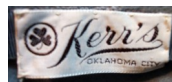


# UCO Fashion Museum Collection

## 1920s Grey Felt Hat with Ostrich Feathers

Designer:	Unknown	Hat #254
Material:	Felt	Store tag: Kerrs, Okla. City
Color:	Grey	Lining: none
Dimensions:	13" wide / 3" deep	Inside stamp: Mirolour made in Italy
Inside stamp:	Mirolour made in Italy	Brim: 2.5" - 3.5"
Condition:	Very Good	Sweatband: Grey grosgrain

Description: A grey felt hat with beige colored ostrich feathers attached on the right towards the front.



## UCO Fashion Museum Collection

### 1920s Wide Brimmed Black Satin Hat with Orange Feathers by Jean Tess, Paris

Circa: 1920s

Designer: Jean Tess, Paris, 3 Faubourg Saint Honore

Material: Satin materials and ostrich feathers

Brim: 1 3/4" - 4"

Condition: Very Good

Description: A black satin hat which is wider on one side than the other. The band consists of orange and black ostrich feathers.

Hat #255

Sweatband: Black satin

Lining: Black satin

Dimensions: 13" x 12" wide



# UCO Fashion Museum Collection

## 1920s Pink & Orange Feathered Headband Hat

Designer: I. Magnin & Co., Raleigh  
Material: Ostrich feathers and satin materials  
Condition: Fragile

Hat #256  
Color: pink and orange  
Dimensions: 5" wide

Description: A flapper style ostrich feather hat with a big pink satin bow in the back.



# UCO Fashion Museum Collection

## 1920s Headband with White Ostrich Feathers

Designer: unknown

Hat #257

Material: White material and ostrich feathers

Style: Flapper

Dimensions: 7" wide

Color: White

Condition: Fragile

Description: A white brow band with white ostrich feathers attached to the back.



## UCO Fashion Museum Collection

### 1920s Black Felt Cloche with Black Feathers

Designer: Unknown  
Material: Felt  
Color: Black  
Dimensions: 8" wide / 5.5" deep  
Condition: Very Good

Hat #274  
Band: None  
Lining: None  
Sweatband: None  
Brim: None

Description: Black felt cloche hat with black feathers attached toward the bottom. The body of the hat was made in Italy.



# UCO Fashion Museum Collection

## 1920s Black Wool Felt Cloche

Designer:	Unknown	Hat #276	
Material:	Felt	Band:	None
Color:	Black	Lining:	None
Dimensions:	8" wide / 5" deep	Sweatband:	Black grosgrain
Condition:	Excellent	Brim:	None

Description: Black felt hat with 1" wide black grosgrain ribbon attached around the bottom. The inside stamp reads: "Chevalier, made of imported fur".



1920s~1930s

# UCO Fashion Museum Collection

## 1920s-30s Brown Felt Cloche from Mildreds in Duncan, Okla.

Designer:	Unknown	Hat #216
Material:	Felt	Store Tag: Mildreds, Duncan, Okla.
Color:	Dark brown	Lining: None
Dimensions:	10" wide / 4" deep	Sweatband: Brown grosgrain
Condition:	Excellent	Brim: None
Description:	Dark brown felt cloche with three sections sewn together. Each section edge is finished with brown grosgrain ribbon and they are hand sewn together. There is a small bow in the front.	





# UCO Fashion Museum Collection

## 1920s-30s Forest Green Beret with Mink Balls on Top

Designer:	Unknown	Hat #217	
Material:	Felt	Band:	None
Color:	Dark green	Lining:	None
Dimensions:	6" Wide	Sweatband:	Green grosgrain
Condition:	Excellent	Inside tag:	Oak Lane, Size 22
Description:	Forest green felt hat with two mink balls on top and two 4" wide felt "tails" in the back.		



# UCO Fashion Museum Collection

## 1920s-30s Dark Brown Felt & Satin Hat with Veil by Chanda

Designer:	Chanda	Hat #244	
Material:	Felt, satin & netting	Band:	None
Color:	Dark brown	Lining:	None
Dimensions:	8" wide / 4" deep	Sweatband:	Red grosgrain
Condition:	Excellent	Brim:	Upturned 1" in front
Description:	Dark brown felt hat with an upturned brown satin brim. The body of the hat was made in France by Flechats. The hat has a brown veil, and the ends of the veil are attached to two hat pins. Brown beads are sewn in a diamond pattern in the front and the back.		



# UCO Fashion Museum Collection

## 1930s Red Velvet Derby with Veil & Feather by Gardner

Designer: Gardner  
Material: Material, lace, netting, feather  
Color: Red  
Dimensions: 9" wide / 3" deep  
Condition: Excellent

Hat #245  
Brim: 0.5"-1" upturned  
Lining: Red lace  
Sweatband: Red grosgrain

Description: Red velvet hat with a red veil and a red feather in front. The inside has red lace lining, 2 small hair combs, and a union tag. Donated by Mrs. Ethel Findley (wife of Robert Findley), January 25, 1993. Original acquisition #187.93.9.7



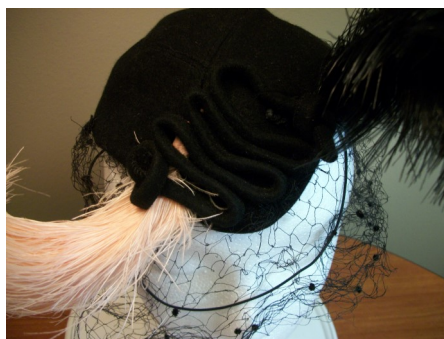
# UCO Fashion Museum Collection

## 1930s Black Half Hat with Feathers & Veil

Designer: Unknown  
Material: Felt  
Color: Black  
Dimension: 7" x 6"  
Condition: Fragile

Hat #258  
Sweatband: Black grosgrain ribbon  
Lining: none  
Store Tag: Neiman Marcus, Dallas  
Inside tag: New York creation, 22 1/2

Description: black half hat with a chin strap and black netting which is damaged. The front of the hat has a corded design with pink feathers on one side, and black feathers on another. Other than the damaged veil the hat is in very good condition.



1930s~1940s

# UCO Fashion Museum Collection

## 1930s-40s Black Felt Pillbox Hat with Flowers

Circa: 1930s-40s

Hat #12

Designer: Unknown

Style: Pillbox

Color: Black

Store tag: None

Dimensions: 8" wide / 2" deep

Lining: None

Condition: Good

Description: Black felt hat with black netting over the crown and down the sides with 3 strips of black velvet ribbon attached to the top of the depressed crown. Green leaves are attached to the veil with pipe cleaners as stems and as small flowers.



## UCO Fashion Museum Collection

### 1930s-40s Black Beret with Tassel by Height of Fashion Hats

Inside tag: Height of Fashions Hats  
Style: Beret  
Sweatband: Black grosgrain  
Dimensions: 7" wide / 3" deep  
Condition: Very Good

Hat #90  
Material: Fabric  
Lining: Black fabric  
Brim: none  
Size tag: 22 ½

Black beret hat with a black tassel on the top. There is black grosgrain ribbon around the bottom edge.



# UCO Fashion Museum Collection

## 1930s-40s Grey & Cream Striped Fabric Hat by Eve Tartar

Designer tag: Eve Tartar Original

Style: Beret

Sweatband: None

Dimensions: 9" wide / 1" deep

Condition: Very Good

Hat #105

Material: Striped fabric

Lining: Rust colored fabric

A grey and cream colored striped fabric hat. The fabric is gathered around the crown and there are two covered corded bows on each side. The inside lining is gathered in the middle and has a brown bow. The





## UCO Fashion Museum Collection

### 1930s Green Doll Hat with Feathers by Marche Hats (NYC)

Inside tag: Marche Hats, New York

Hat #108

Inside tag: New York Creation, Adjustable, Fair Labor Standards, Consumer Protection Label

Style: Doll hat

Material: Straw, ribbon and feathers

Sweatband: Green grosgrain

Lining: none

Dimensions: 8" long x 7" wide / 2" deep

Brim: 1" – 1 ½"

Condition: Excellent

Small perky doll style hat with an upturned brim and a depressed crown. It has a red velvet bow in back, and a red velvet ribbon from the back to the side which is attached to red and green feathers. The inside has a small hair comb in front and a black elastic strap. It also has a red tipped hair pin. Donated by Wanda Britton from Okla. City (wife of John Britton), October 10, 1985. Original acquisition #31.85.4.C



# UCO Fashion Museum Collection

## 1930s-40s Black Straw with Netting & Feathers

Designer:	Unknown	Hat #189	
Material:	Straw	Lining:	None
Color:	Black	Sweatband:	Black grosgrain
Dimensions:	8" wide / 2.5-3" deep	Brim:	turned up
Condition:	Excellent	Band:	Black grosgrain
Description:	Black straw hat with a turned up brim with feathers attached to the outside. Black net covers the hat and drapes down the back.		



# UCO Fashion Museum Collection

## 1930s-40s Navy Blue Hat with Pink Band by Sally Victor

Designer:	Sally Victor, 18 East 53rd Street	Hat #191	
Material:	Straw	Band:	Pink grosgrain
Color:	Navy and Pink	Lining:	None
Dimensions:	8" wide, 2" deep	Sweatband:	Pink grosgrain
Condition:	Very Good	Brim:	1.5" wide
Description:	Navy blue hat with a pink grosgrain ribbon band that ends with a bow in the back.		



# UCO Fashion Museum Collection

## 1930s-40s Natural Straw with Black Lace by Hattie Carnegie

Designer: Hattie Carnegie Original  
Material: Straw and lace  
Color: Natural straw and black lace  
Dimensions: 12" wide / 3" deep  
Condition: Very Good

Hat #197  
Lining: None  
Sweatband: Pink grosgrain  
Brim: 2"-3" wide

Description: This straw hat has 9 rows of black lace attached—2 rows around the brim edge, and 7 rows of lace around the crown. There is a black velvet bow ribbon in the back, and the inside has a small hair comb in the front.



# UCO Fashion Museum Collection

## 1930s-40s Natural Straw with Black Velvet and Black Veil

Designer: Unknown  
Material: Straw and velvet  
Color: Natural straw and black  
Dimensions: 12" wide / 3" deep  
Condition: Very Good  
Description: A natural colored straw hat with black velvet fabric under the slightly upturned brim. The band is black velvet fabric. There is a black veil which is attached at the front which has some decorative round weights on 2 sides. The veil is damaged in the front. The hat has a black elastic chinstrap.

Hat #198  
Size tag: 22 1/2  
Lining: None  
Sweatband: Black grosgrain  
Brim: 2.5"-3"



## UCO Fashion Museum Collection

### 1930s-40s Brown Straw with Velvet & Pompoms by Grace Burney

Designer: Grace Burney, Oklahoma City      Hat #199  
Material: Straw and brown velvet      Lining: None  
Color: Dark Brown      Sweatband: Brown grosgrain with gold bric-a-brac  
Dimensions: 7.5" wide / 2" deep      Brim: 1" wide  
Condition: Excellent  
Description: A small dark brown straw hat with an upturned brim. The brim edge had brown velvet attached. A brown velvet bow is attached to the crown with the ribbon tails going over the crown and draping over the right side with beige silk flowers attached at the ends. The inside has 2 small hair combs on each side. Donated by Mrs. Catherine "Lynn" Adams, September 28, 1987, Original acquisition #113.87.17.



# UCO Fashion Museum Collection

## 1930s-40s Natural Straw with Appliques by Sally Victor

Designer: Sally Victor, 18 East 53rd St.

Hat #202

Material: Straw and material

Lining: None

Color: Natural straw

Sweatband: Beige grosgrain

Dimensions: 10" x 12" wide / 4" deep

Brim: 1.5"-2.5"

Condition: Very Good

Description: A natural colored straw hat with 8 appliqued fabric designs surrounded by rust colored yarn. Donated by Mrs. Catherine "Lynn" Adams, September 28, 1987, Original acquisition #113.87.17.



# UCO Fashion Museum Collection

## 1930s-40s Dark Brown Felt Hat with Veil by Sadye Landsman

Designer:	Sadye Landsman	Hat #209	
Material:	Felt	Store tag:	Rex Inc., Beverly Hills, CA
Color:	Dark Brown	Lining:	None
Dimensions:	20" wide / 2" deep	Sweatband:	Brown grosgrain
Condition:	Excellent	Brim:	1"-1 3/4" wide
Description:	Dark brown felt hat with brown netting attached at the crown and draping in front and on both sides. The back of the crown also has brown netting with sheer brown fabric attached, all of which falls below the brim.		





## UCO Fashion Museum Collection

### 1930s-40s Grey Felt Hat with Square Brim Shape by Mr. John

Designer:	Mr. John	Hat #213	
Material:	Felt	Band:	Grey netting
Color:	Grey	Lining:	None
Dimensions:	10" x 8-9.5" wide / 3" deep	Sweatband:	Grey grosgrain
Condition:	Excellent	Brim:	3/4" - 3"
Description:	Grey felt hat with a grey sweatband, brown chinstrap and grey netting as a band. The brim is square shaped.		



# UCO Fashion Museum Collection

## 1930s-40s Fabric Multicolored Turban by Emme, Inc.

Designer: Emme, Inc., New York  
Material: Fabric  
Color: Brown, pink and blue  
Dimensions: 8" wide / 6" deep  
Condition: Excellent  
Description: A plaid fabric turban in different shades of brown, pink and blue with a big bow in the back. It has 2 small hair combs inside on the sides.

Hat #214  
Band: None  
Lining: White fabric  
Sweatband: Brown grosgrain  
Brim: None



## UCO Fashion Museum Collection

### 1930s-40s Blue & Cream Fabric Hat & Gloves by Laddie Northridge

Designer: Laddie Northridge, 16 W. 57th St., NY      Hat #215  
Material: Fabric      Band: Matching fabric  
Color: Blue and cream      Lining: Brown fabric  
Dimensions: 10" x 9.5" long / 3" deep      Sweatband: Brown grosgrain  
Condition: Excellent      Brim: 1 25" - 1.5"  
Description: Blue fabric hat with cream colored cross print. The band is of the same fabric, folded, and wrapped over a cream grosgrain bow on the right side. It has a matching pair of long gloves.



# UCO Fashion Museum Collection

## 1930s-40s Brown Satin & Velvet Beret by Avalon

Designer:	Avalon	Hat #218	
Material:	Fabric	Store tag:	Poschelle, Oklahoma City
Color:	Dark brown	Lining:	Brown fabric
Dimensions:	8" wide / 3" deep	Sweatband:	Brown grosgrain
Condition:	Excellent	Brim:	None
Description:	Dark brown beret made with alternating strips of brown satin and brown velvet. The front has a small felt chevron with two decorative glass chevrons attached. Two hatpins are with the hat.		



# UCO Fashion Museum Collection

## 1930s-40s Multicolored Green Turban from Mad'Leine, Paris

Designer:	Mad'Leine, 390, Rue S1 Honore, Paris	Hat #231
Material:	Fabric	Band: None
Color:	Various shades of greens and browns	Lining: Green netting
Dimensions:	7" wide / 3" deep	Sweatband: Brown grosgrain
Condition:	Excellent	Brim: None
Description:	Fabric turban hat made in Paris with green netting inside, a small hair comb in front, and a fabric bow on the right side .	



## UCO Fashion Museum Collection

### 1930s-40s Black Skull Hat with Buttons by Hattie Carnegie

Designer:	Hattie Carnegie Inc. Casual	Hat #224
Material:	Felt	Sweatband: Black grosgrain
Color:	Black, orange and white	Brim: None
Dimensions:	8" wide / 3" deep	Condition: Excellent

Description: A black skull hat with white buttons sewn on with mauve/orange colored embroidery floss. Some of the buttons have bows on them. Donated by CiCi Goodwin (wife of Tom Goodwin), March 26, 1994. Original acquisition #195.94.6



## UCO Fashion Museum Collection

### 1930s-40s Straw Sailor Hat with Black Velvet and Net by Leslie James

Designer: Leslie James, California  
Material: Straw, velvet and net  
Color: Natural and black  
Dimensions: 14" wide / 1.5" deep  
Condition: Excellent

Hat #266  
Band: Black velvet  
Lining: None  
Sweatband: Black grosgrain  
Brim: 3.5" wide

Description: Natural straw hat with a black velvet band with a bow in back. There is black netting attached under the band which falls below the hat brim. There is a hair comb in front inside and a black chin strap. On the under brim, there is black cording inserted inside a brim crease.



# UCO Fashion Museum Collection

## 1930s-40s Brown Wool Felt Hat with Flowers & Bows

Designer: Unknown  
Material: Felt and flowers  
Color: Brown and gold  
Dimensions: 12" wide x 3" deep  
Inside stamp: 33 Karat, body made in Italy  
Condition: Fair—Display only

Hat #305  
Lining: None  
Sweatband: None  
Brim: 2" wide  
Store tag: Poschelle, Okla. City

Description: Brown felt flowered hat with gold flowers and brown velvet bows around the brim. There is wire in the brim edge and in the bottom of the crown. The hat has a black chin strap with is badly stretched out.





1940s

## UCO Fashion Museum Collection

### 1940s Parkridge Exclusive Black Straw Hat with Flowers

**Circa:** 1940s  
**Inside tag:** Parkridge Exclusives  
**Lining:** None  
**Condition:** Fragile, display only

**Hat #7**  
**Dimensions:** 8.5" long x 7" wide / 6" deep  
**Style:** Straw / **Size tag:** 22  
**Band:** Black velvet ribbon

A black straw hat with lace over the brim and pink flowers underneath the lace around the front and sides. The band is a black velvet ribbon which ties in a bow and hangs down the back.



# UCO Fashion Museum Collection

## 1940s Dark Brown Skull Cap from Harryson, New York

Designer: Harryson, 5<sup>th</sup> Avenue, New York

Hat #19

Style: Skull

Sweatband: none

Lining: None

Dimensions: 8" wide / 4" deep

Condition: Very Good

Dark brown close fitting skull cap which has 2 sections edged with brown grosgrain, and sewn together in the middle.



Inside view

UCO Fashion Museum Collection  
1940s Brown Net Hat by Helen Liebert

Designer: Helen Liebert

Dimensions: 7.5" wide / 3" deep

Sweatband: None

Condition: Excellent

Hat #17

Brim: 1"

Lining: none

A brown net hat with brown beads on top of flower designs in the netting, and a brown velvet band. The 1" brim could be worn either up or down.



# UCO Fashion Museum Collection

## 1940s Tan Wool Felt Hat

Designer: Unknown

Hat #22

Dimensions: 8" wide / 4" deep

Sweatband: Black ribbing

Material: Wool felt and netting

Lining: None

Condition: Fair – some moth holes

Brim: 1"-2"

Tan wool felt hat with a matching felt band that has silver studs attached. There is a felt bow in the back, and brown netting around the band. The netting ties in the back and has felt pieces on the ends.



## UCO Fashion Museum Collection

### 1940s Brown Straw Pillbox Hat with Multicolored Flowers by Mr. D'

Designer: Mr. D'

Hat #34

Material: Straw, ribbon and flowers

Style: Pillbox

Sweatband: 1.5" light brown grosgrain

Condition: Excellent

Dimensions: 5.5" wide / 2" deep

Light brown straw hat with green, orange and yellow flowers attached all over with green leaves and stems. The bottom edge has a 0.5" wide brown velvet ribbon with a bow in the back. Donated by Mrs. Catherine (Lynn) Adams on Sept. 29, 1987. (Previous Acquisition #113.87.17.8)



# UCO Fashion Museum Collection

## 1940s Milbrae Exclusives Red Flowered Casque

Inside tag: Milbrae Exclusives  
Material: Netting and flowers  
Style: Casque  
Dimensions: 7" wide / 1" deep  
Condition: Very good

Hat #35  
Union Made  
Sweatband: None  
Lining: none

A wide red casque style hat covered with pink and green flowers and leaves.



# UCO Fashion Museum Collection

## 1940s Green Leaf Hat with Gardenia Flowers by Mr. Jacques

Acquisition #113.87.17.15

Designer: Mr. Jacques

Style: Flowered

Sweatband: green grosgrain with gold bric-a-brac

Dimensions: 7" wide / 3" deep

Green net covered with white flowers and green leaves. It has a 1" dark green velvet ribbon around the edge with a bow in the front. Donated by Mrs. Catherine (Lynn) Adams.

Hat #37

Circa: 1940s

Material: Netting, flowers and velvet ribbon

Lining: none

Condition: Very Good





## UCO Fashion Museum Collection

### 1940s Brown & White Feathered Wire Frame Hat

Inside tags: None  
Style: Feather

Sweatband: None

Dimensions: 6" wide / 2" deep

Brown and white feathers cover a brown wire frame hat. It has 2 wire side extensions, and a pink flower in the front.

Hat #43

Material: Feathers and wire

Lining: None

Condition: Very Good



## UCO Fashion Museum Collection

### 1940s Multicolored Feather Hat by Grace Burney

Designer Tag: Grace Burney, Oklahoma City

Style: Feather

Sweatband: Black grosgrain

Dimensions: 7" wide / 2" deep

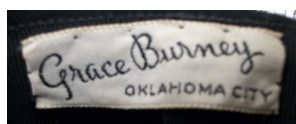
Pink blue and white feathers are attached to a black felt hat with a black velvet bow in the back. Feathers are covered with black netting, and the hat has an elastic chin strap. Some of the netting is damaged.

Hat #44

Material: feathers, netting, ribbon

Lining: None

Condition: Fair, veil is damaged



# UCO Fashion Museum Collection

## 1940s Brown Feathered Pillbox Hat

Inside Tag: None  
Style: Pillbox  
Sweatband: Brown grosgrain  
Dimensions: 6" wide / 3" deep  
Hat #45  
Material: Feathers  
Lining: brown lace  
Condition: Excellent

Brown feather hat with an iridescent sheen on some feathers. The feathers are covered with brown netting, and the inside of the hat has 2 small hair combs.



## UCO Fashion Museum Collection

### 1940s Feathered Pillbox Hat from Modes Annette (Paris)

Inside Tag: Modes Annette, 212, rue de Rivoli Paris Tuileries Hat #46  
Style: Pillbox Material: Feathers and material  
Sweatband: black grosgrain Lining: black material  
Dimensions: 7" wide / 3" deep  
Condition: Very good

Multicolored feathers are attached to a medium brown felt hat around the outside. The inside lining is black fabric, and there is an elastic chin strap.



# UCO Fashion Museum Collection

## 1940s Multicolored Feathered Deep Crowned Hat by Dajon

Designer Tag: An Original by Dajon, New York  
Inside tag: Union Made in U.S.A  
Style: Deep crowned feather  
Sweatband: Brown grosgrain  
Brim: 2" wide  
Dimensions: 10" wide / 6" deep  
Condition: Very Good

Hat #47  
Price tag: \$22.95  
Material: Felt and feathers  
Lining: None  
Band: Brown leather

Brown felt hat covered with brown and orange multicolored feathers. The crown is slightly depressed in the center, and the band is a multitoned brown leather. It has a designer, union, and price tag.



# UCO Fashion Museum Collection

## 1940s Black Feathered Open Crowned Hat

Inside Tags: None  
Style: Feather  
Sweatband: Black grosgrain  
Dimensions: 6.5" wide / 2" deep  
Condition: Very Good

Hat #58  
Material: Coque feathers, felt and net  
Lining: None  
Brim: None

Black coque feather hat with an open crown covered with black netting. Black wool felt covers the rims and it has two covered wire side pieces.



# UCO Fashion Museum Collection

## 1940s Black Feather Doll Hat by I. Magnin

Inside tag: I.MAGNIN  
Designer tag: by Terese Ahrens, New York  
Style: Doll  
Sweatband: None  
Dimensions: 4" wide / ½" deep  
Condition: Excellent

Hat #59  
Material: feathers and ribbon Lining:  
black fabric  
Brim: none

Black feather doll hat with a black velvet bow in the back and two small hair combs on the side.



Back view



# UCO Fashion Museum Collection

## 1940s Brown Feathered Hat by Genevieve Bernard from Paris

Designer tag: Genevieve Bernard, 4 Faubourg St. Honore', Paris  
Style: Brimless feather  
Sweatband: Brown grosgrain  
Dimensions: 8.5" long x 9" wide / 4" deep  
Condition: Fair

Hat #60  
Material: Feathers and net  
Lining: None  
Brim: None

Brown feather hat with a 5" high attachment in front covered with feathers. The hat has brown netting in front and a slightly rolled brim in the front also.





# UCO Fashion Museum Collection

## 1940s Burgundy Wool Hat with Fur and Scarf

Store Tag: Sherman, Fifth Ave., New York, Paris  
 Designer tag: None  
 Style: Pillbox  
 Sweatband: Brown grosgrain  
 Dimensions: 7" wide / 2" deep  
 Condition: Good

Hat #77  
 Material: Wool fabric and fur  
 Lining: red material  
 Brim: 2" upturned

Burgundy wool hat with an attached scarf and fur around the upturned 2" brim. The scarf has a few month holes. This hat matches suit #191.93.5.B.



# UCO Fashion Museum Collection

## 1940s Navy Blue Hourglass Shaped Straw Hat

Inside tags: None  
Style: Straw  
Sweatband: Navy grosgrain  
Dimensions: 7" wide / 3" deep  
Condition: Very good

Hat #78  
Material: Straw  
Lining: None  
Brim: None

Navy blue straw hat in an hourglass shape with the lower part extending in front and back.



# UCO Fashion Museum Collection

## 1940s Gold & Cream Pillbox by Gladys & Belle

Inside Tag: Gladys & Belle, 2d West 57<sup>th</sup> St., NY

Style: Pillbox

Sweatband: Off-white grosgrain

Dimensions: 7" wide / 3" deep

Condition: Excellent

Hat #82

Material: Fabric, braid, netting and tassels

Lining: None

Brim: None

Gold and cream colored pillbox. The inside is netting, the outside is cream colored with gold braid sewn into the fabric making a circular pattern. One side has a large fabric knot with 7 tassels attached.



# UCO Fashion Museum Collection

## 1940s Cream and Beige Beehive Hat

Inside tags: None  
Style: Beehive  
Sweatband: Cream grosgrain  
Dimensions: 7.5" wide / 5" deep  
Condition: Very good

Hat #84  
Material: Fabric and net  
Lining: none  
Brim: none

Beehive style hat with cream and beige fabric interwoven and attached to a net base. The inside has 2 small hair combs attached. Some of the glue can be seen from inside the hat.



# UCO Fashion Museum Collection

## 1940s Black Straw Pillbox

Store Tag: Neiman-Marcus "made to order"  
Circa: 1940s  
Material: Straw  
Lining: None  
Condition: Excellent

Hat #86  
Designer tag: none  
Style: Pillbox  
Sweatband: Cream material  
Dimensions: 6.5" x 2"

A "made to order" black straw pillbox hat with 2 small hair combs inside. The crown has a swirl pattern, and the sides have a basket weave pattern in the straw.



# UCO Fashion Museum Collection

## 1940s Wide Brimmed Black Silk Hat by Marche' Hats

Inside tag: Marche' Hats, Paris, New York  
Style: Wide-brimmed  
Sweatband: Black grosgrain  
Dimensions: 14" wide / 3" deep  
Condition: Good

Hat #88  
Material: fabric  
Lining: none  
Brim: 4.5" wide

Wide brimmed black fabric hat with decorative black stitching. There is a large fabric flower on the front of the crown with black sequins. At one time there were black grosgrain ties but only a partial tie is remaining. It has a hatpin in the back.



# UCO Fashion Museum Collection

## 1940s Black Turban by Emme Inc. (NYC)

Designer tag: Emme Inc., New York  
Style: Turban  
Sweatband: Black grosgrain  
Dimensions: 7" wide / 4" deep

Hat #94  
Material: Fabric  
Lining: White fabric  
Condition: Excellent

Black satin turban hat with a black satin bow on one side and with off-white fabric lining.



## UCO Fashion Museum Collection

### 1940s Gold Beret with Fur Ball on Top, design by Jan Leslie

Designer tag: Jan Leslie, custom design  
Style: Beret  
Sweatband: Brown grosgrain  
Dimensions: 7" wide / 3" deep  
Condition: Very Good

Hat #97  
Material: Fabric, felt and fur  
Lining: None

Gold fabric covers the felt body of this hat. It has a brown mink fur ball on top of the crown.





# UCO Fashion Museum Collection

## 1940s Grey Fabric Cloche by Irene of New York

Designer tag: Irene of New York

Style: Cloche

Sweatband: Black grosgrain

Dimensions: 7" wide / 5" deep

Condition: xcellent

Soft grey fabric hat with a stitched design on the crown.

Hat #98

Material: Fabric

Lining: Black material

Brim: none



# UCO Fashion Museum Collection

## 1940s Green Felt Pillbox by Wilshire

Inside tag: Wilshire  
Style: Cloche  
Inside stamp: None  
Lining: None  
Condition: Excellent

Hat #104  
Material: Felt  
Sweatband: Green grosgrain  
Dimensions: 8" wide / 4" deep

Green felt hat with a pillbox shaped crown. There is a green felt bow on the front which has gold metal decorations on the ends. It has a black elastic strap attached toward the back.



## UCO Fashion Museum Collection

### 1940s Black Fabric Turban by Sonni California

Inside tag: Sonni California  
Style: Turban  
Sweatband: None  
Dimensions: 7" wide / 4" deep  
Condition: Excellent

Hat #109  
Material: Black fabric  
Lining: None  
Brim: none  
Union tag: yes

Black fabric turban hat with a big bow in the back. It has two side combs inside.



# UCO Fashion Museum Collection

## 1940s Brown Wool Hat by Rivera

Inside tag: Rivera  
Style: Breton  
Sweatband: Brown grosgrain  
Dimensions: 7" wide / 4" deep  
Condition: Good

Hat #115  
Material: Brown wool  
Lining: None  
Brim: None

Dark brown wool hat with a wide fabric band wrapped around the bottom which has a tassel on the end. The material has a few moth holes.



## UCO Fashion Museum Collection

### 1940s Flowered Hat by Sally Victor, New York

Inside tag: Sally Victor, New York  
Style: Flowered  
Sweatband: Green grosgrain  
Dimensions: 8" wide / 3" deep  
Condition: Excellent

Hat #156  
Material: Silk flowers and fabric  
Lining: Pale pink fabric  
Brim: None

Flowered hat covered with pink and red flowers with yellow centers. There are some green leaves, and two red velvet bows. The inside has 2 small hair combs on the sides.



# UCO Fashion Museum Collection

## 1940s Brown Mink Pillbox designed by Lloyd Wright

Designer tag: Designed by Lloyd Wright

Style: Pillbox

Band: None

Lining: Gold fabric

Dimensions: 7" wide / 2" deep

Condition: Excellent

Hat #174

Material: Mink and fabric

Sweatband: Green grosgrain

Brim: None

Brown mink pillbox hat with gold lining and 3 small combs inside. The crown is made of a gathered brown fabric and has a 2" high mink ball on top.



# UCO Fashion Museum Collection

## 1940s Green Straw Hat with Leaves & a Flower

Designer: Unknown  
Material: Straw  
Color: Green  
Dimensions: 8" wide, 3" high  
Condition: Excellent  
Description: Green straw hat with white flowers and green leaves underneath green netting on the top. There's a white flower that stands up on one side of the hat. Green veil in front.

Hat #190  
Size tag: 22  
Band: Green velvet ribbon 1/4" wide  
Sweatband: Green grosgrain  
Brim: upturned 1"



# UCO Fashion Museum Collection

## 1940s Black Straw with Black Velvet by Chanda

Designer: Chanda  
Material: Straw  
Color: Black  
Dimensions: 12" 2ide / 3" deep  
Condition: Excellent  
Description: Black straw hat with black velvet on top and inside the brim. There is black velvet bow on the right hand side. The brim is turned up around the edges. The inside has one hair comb in front.. Donated by Tom & Sylvia Dulaney, Dec. 28, 1986. Owned by Virginia Dulaney. Original Acquisition #101.86.C.

Hat #196  
Band: Black velvet  
Lining: Navy blue material  
Sweatband: Red grosgrain  
Brim: 3" wide





## UCO Fashion Museum Collection

### 1940s Cream Straw with Blue Velvet Band and Bows

Designer: Unknown

Material: Straw

Sweatband: Black grosgrain

Dimensions: 9" x 9.5" wide/ 2" deep

Condition: Excellent

Description: Cream colored straw hat with a blue velvet ribbon band with 3 bows in the back. There are two velvet side pieces that fit over the sides.

Hat #201

Lining: Stiff netting

Brim: 1-1.5"



# UCO Fashion Museum Collection

## 1940s Beige Open Crowned Skull Style Hat by Morquez

Designer:	Morquez	Hat #205	
Material:	Fabric	Lining:	None
Color:	Beige	Sweatband:	None
Dimensions:	7" wide / 3.25" deep	Brim:	None
Condition:	Fair, some netting is damaged	Style:	Open crowned
Description:	Beige open crowned skull hat with netting over the fabric on top with 2 interwoven sections covered with fabric.		



# UCO Fashion Museum Collection

## 1940s Brown & Black Pillbox by Lilly Dache'

Designer: Daches' designed by Lilly Dache'      Hat #219  
Material: Felt      Band: None  
Color: Dark brown      Lining: None  
Dimensions: 7" wide / 4" deep      Sweatband: Brown grosgrain  
Condition: Excellent  
Description: Brown pillbox hat with black ribbed knit on the bottom. The crown is made with brown satin fabric strips sewn together and meeting at the top which has a large black button. It has a black felt bow in the back.



# UCO Fashion Museum Collection

## 1940s Brown Fabric Beret by Ronnie Hats

Designer:	Ronnie Hats makers of G Howard Hodge	Hat #220
Material:	Fabric	Band: None
Color:	Brown	Lining: gold material
Dimensions:	8" wide / 2" deep	Sweatband: brown grosgrain
Condition:	Excellent	
Description:	Brown fabric beret which hangs over on the right side. Contrasting brown satin fabric is layered at the bottom on the opposite side.	



# UCO Fashion Museum Collection

## 1940s Tan Beret with Musical Notes, a Nat Frank Original

Designer: Nat Frank Original by Le Leon, New York

Hat #225

Material: Felt

Band: None

Color: Brown, red, green

Lining: None

Dimensions: 7.5" wide / 2" deep

Sweatband: None

Condition: Excellent

Brim: None

Description: Small felt hat with musical notes embroidered on the felt and brown beads sewn on. There is a felt bow on the back, and inside there is a small comb in front and side clips covered with brown felt and a bow.



# UCO Fashion Museum Collection

## 1940s Black Velvet Hat with Netting by Emme, Inc.

Designer: Emme Inc ., New York

Material: Velvet

Color: Black

Dimensions: 7" wide / 2.5" deep

Condition: Very Good

Description: Small black velvet hat with black netting gathered and attached on the right side. The inside has a hair comb on the left side.

Hat #226

Band: None

Lining: None

Sweatband: Black grosgrain

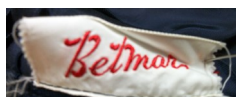
Brim: None



# UCO Fashion Museum Collection

## 1940s Navy Blue Fabric Tam from Betmar

Designer:	Betmar	Hat #228	
Material:	Fabric	Band:	None
Color:	Navy blue	Lining:	Navy blue fabric
Dimensions:	8.5" wide / 2" deep	Sweatband:	Blue grosgrain
Condition:	Excellent	Brim:	None
Description:	Navy blue fabric tam with stitching all over each section and with 2 grosgrain ribbons on one side.		



# UCO Fashion Museum Collection

## 1940s Red & Green Turban

Designer:	Unknown	Hat #232	
Material:	Fabric and newspaper	Band:	None
Color:	Red, green & brown plaid	Lining:	French newspaper
Dimensions:	7" wide / 5" deep	Sweatband:	None
Condition:	Excellent	Brim:	None
Description:	An unusual turban style hat. The inside lining is a newspaper printed in French, on which the fabric is attached. The designer twisted the paper into a knot and covered it with fabric, then tied a knot around it.		





# UCO Fashion Museum Collection

## 1940s Navy Blue Calot by Lorie, NYC

Designer:	Lorie, 57th St., New York	Hat #233	
Material:	Fabric	Band:	None
Color:	Navy Blue	Lining:	Navy blue materials
Dimensions:	7-8" wide / 2" deep	Sweatband:	None
Condition:	Excellent	Brim:	None
Description:	Navy blue calot with pleated fabric swirls for decoration.		



# UCO Fashion Museum Collection

## 1940s Black Velvet & Satin Hat by Beatrice-Martin

Designer: Beatrice-Martin, New York

Hat #234

Material: Velvet and satin

Store tag: Hurwitch Bros., Boston

Color: Black

Lining: Rust colored material

Dimensions: 7" wide / 2.5" deep

Sweatband: Silver trim & black lace

Condition: Excellent

Brim: None

Description: Black velvet hat with a V opening on top of the crown. Black satin material is folded and attached from the front and around the V. The inside has 2 small combs on the sides.



# UCO Fashion Museum Collection

## 1940s Black Velvet Calot

Designer:	Unknown	Hat #235	
Material:	Velvet	Band:	None
Color:	Black	Lining:	White fabric
Dimensions:	7.5" x 6" wide / 4" deep	Sweatband:	None
Condition:	Very good	Brim:	None
Description:	Black velvet calot with a black satin bow in the back.		



## UCO Fashion Museum Collection

### 1940s Yellow Straw Cloche with Tan Fabric & Feathers

Designer:	Unknown	Hat #236
Material:	Straw, fabric & feathers	Band: None
Color:	Yellow and tan	Lining: None
Dimensions:	8" wide / 5" deep	Sweatband: None
Condition:	Very Good	Brim: None
Description:	Yellow straw cloche with tan fabric around the back and in front. The front has a fan of folded fabric with a cluster of feathers.	



# UCO Fashion Museum Collection

## 1940s Green Leaf Cloche with Green Roses by Eve (Chicago)

Designer: Eve, Chicago

Hat #237

Material: Fabric

Band: None

Color: Green

Lining: Yellow fabric

Condition: Very Good

Brim: None

Description: This hat has green leaves cut out of velveteen fabric which are attached to the form. One side has green roses with stems attached made out of the same fabric and green silk.



# UCO Fashion Museum Collection

## 1940s Straw Sailor or Skimmer Hat by Gage Handcraf

Designer:	Gage handcraf	Hat #238	
Material:	Straw, fabric, feather, net	Band:	Brown fabric
Color:	Natural straw	Lining:	None
Dimensions:	11" wide / 2" deep	Sweatband:	Beige grosgrain
Condition:	Excellent	Brim:	1 3/4" - 2.5" wide
Description:	Straw hat with a beige folded fabric band, brown net veil, and a long pheasant feather on the side with a semi-circular rhinestone decoration. There is a white and a black hat pin on the side of the hat. Part of the veil is damaged.		



# UCO Fashion Museum Collection

## 1940s Brown Velvet Hat by Lilly Dache

Designer:	Lilly Dache	Hat #239	
Material:	Velvet, netting & feathers	Band:	None
Color:	Dark brown	Lining:	None
Dimensions:	12" long x 10" wide / 3" deep	Sweatband:	Brown grosgrain
Condition:	Very Good	Brim:	None
Description:	Brown velvet hat with a wide brim in front. The crown is creased and the front has brown feathers attached at the peak. The hat has brown netting which is slightly damaged, and a broken chin strap.		



# UCO Fashion Museum Collection

## 1940s Cream Fabric Beret by Mr. John Jr.

Designer:	Mr. John Jr.	Hat #240	
Material:	Fabric	Band:	None
Color:	Cream	Lining:	None
Dimensions:	11" wide / 5" deep	Sweatband:	Cream grosgrain
Condition:	Excellent	Brim:	None
Description:	A simple beret with a fabric bow on one side. The sweatband has red cording hand-threaded in it.		





# UCO Fashion Museum Collection

## 1940s Black Astrakhan Fur Pillbox by Vagn, Kobenhavn

Designer:	Vagn Kobenhavn	Hat #241	
Material:	Velvet	Band:	None
Color:	Black	Lining:	Gold material
Dimensions:	7.5" wide / 2.5" deep	Sweatband:	Black grosgrain
Condition:	Excellent	Brim:	None
Description:	Black velvet pillbox hat with 2 small side combs inside.		



# UCO Fashion Museum Collection 1940s Small Blue Satin Turban Doll Hat by Lloyd Wright

Designer:	Lloyd Wright	Hat #242	
Material:	Satin fabric	Band:	None
Color:	Navy blue	Lining:	Silver fabric
Dimensions:	6" wide / 3" deep	Sweatband:	Blue grosgrain
Condition:	Excellent	Brim:	None
Description:	A very small turban style doll hat made with blue satin material. There is a matching satin rose attached to the back with the flower attached at the crown. There are 2 small combs inside.		



# UCO Fashion Museum Collection

## 1940s Wire Frame Hat with Fruit & Leaves, Hat-Nip by Danciger

Designer: Hat-nip by Danciger

Material: Wire and material

Color: Green and blue

Dimensions: 8" wide / 4" deep

Condition: Good

Description: A wire framed hat with blue material hand-stitched over the wires. The hat has green and yellow leaves attached, and blueberries and leaves.

Hat #243

Band: None

Lining: None

Sweatband: None

Brim: None



# UCO Fashion Museum Collection

## 1940s Navy Blue Beanie with Gold Button Trim

Designer: Unknown  
Material: Fabric and lace  
Color: Navy blue and gold  
Dimensions: 6" wide  
Condition: Fair

Hat #246  
Band: None  
Lining: Blue lace  
Sweatband: Black grosgrain  
Brim: None

Description: This hat was owned and worn by Mary Lou Bohnard. Included with the hat is a note which reads "Navy 'beanie' with gold button trim. I loved tiny hats that perched on top of the head. This is not a designer hat but one I loved with suits (for spring).



## UCO Fashion Museum Collection

### 1940s Tan Felt Hat with Scalloped Edge by John Frederics Charmer

Designer:	John Frederics Charmer	Hat #248	
Material:	Felt	Band:	None
Color:	Tan	Lining:	None
Dimensions:	10" long x 8" wide / 3.5" deep	Sweatband:	Tan grosgrain
Condition:	Excellent	Brim:	0.5" - 3"
Description:	Tan felt hat with a scalloped edge and a tab in the back.		



# UCO Fashion Museum Collection

## 1940s Black Wool Tam by Starling

Designer:	Starling	Hat #249	
Material:	Felt	Band:	None
Color:	Black	Lining:	None
Dimensions:	8" wide / 3" deep	Sweatband:	Black grosgrain
Condition:	Excellent	Brim:	None
Description:	Black felt tam with a 5" long bow in front, and a grosgrain ribbon tab in the back. Inside stamp reads "Glenover Faum tra-felt, Henry Pollax, Inc., New York, 100% wool".		



# UCO Fashion Museum Collection

## 1940s Navy Blue Felt Cloche from Betmar

Designer:	Betmar	Hat #251	
Material:	Felt	Band:	None
Color:	Navy blue	Lining:	None
Dimensions:	8" wide / 5" deep	Sweatband:	Navy blue grosgrain
Condition:	Excellent	Brim:	None
Description:	Navy blue felt cloche hat with a big navy blue grosgrain ribbon bow in front.		

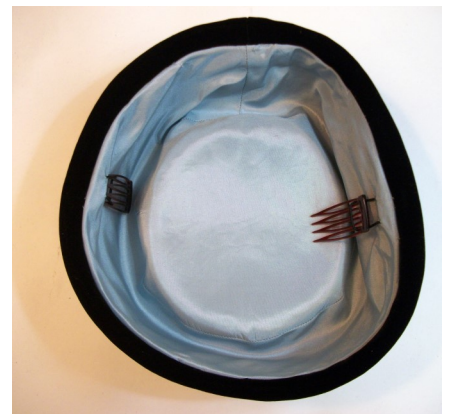


# UCO Fashion Museum Collection

## 1940s Black Velvet & Fabric Pillbox

Designer:	Unknown	Hat #268	
Material:	Velvet and fabric	Band:	None
Color:	Black	Lining:	Blue material
Dimensions:	7" wide / 2" deep	Sweatband:	None
Condition:	Excellent	Brim:	None

Description: Black velvet pillbox with blue lining. The crown is depressed giving it a roll effect, and there is an extra band of material around the crown. There are two small combs on the inside.





## UCO Fashion Museum Collection

### 1940 Black Velvet Tam with Black Net from Kerr's in Okla. City

Designer:	Unknown	Hat #269	
Material:	Velvet and net	Band:	None
Color:	Black	Lining:	Black material
Dimensions:	7.75" wide / 2.5" deep	Store tag:	Kerr's, Oklahoma City
Condition:	Excellent	Sweatband:	Black grosgrain

Description: Black velvet tam with black netting and a raised adornment on the crown with black grosgrain ribbon. It has a union made in USA tag underneath the store tag.



Top view

# UCO Fashion Museum Collection

## 1940s Brown Wool Felt Cloche from Betmar

Designer: Betmar  
Material: Wool felt  
Color: Brown  
Dimensions: 7.5" wide / 4" deep  
Condition: Excellent

Hat #275  
Band: None  
Lining: None  
Sweatband: Brown grosgrain  
Brim: None

Description: Brown wool felt hat with 1 1/2" wide brown grosgrain ribbons attached on the right side. The inside has a stamp that reads "Luisant Soleil, 100% wool, Betmar Hats".



## UCO Fashion Museum Collection

### 1940s Black Felt Cloche with Black Satin Bow from Betmar

Designer: Betmar

Material: Felt

Color: Black

Dimensions: 9" wide / 5" deep

Condition: Excellent

Hat #277

Band: None

Lining: None

Sweatband: Black grosgrain

Brim: None

Description: Black felt hat with a 1 1/2" black satin bow on the top. It has an inside stamp with a crest. The materials was made in Italy.

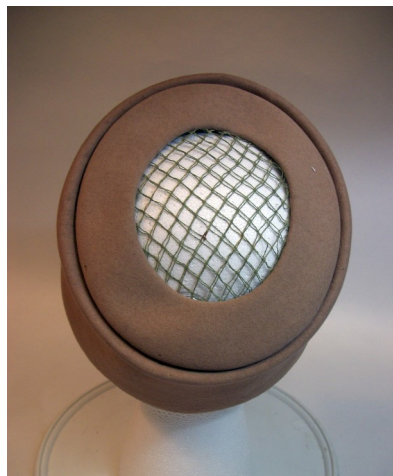
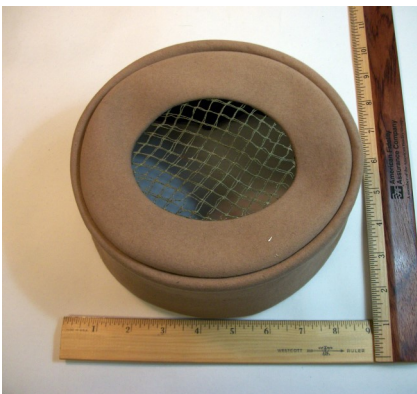


# UCO Fashion Museum Collection

## 1940s Open Crowned Tan Felt Pillbox by Rex, Inc.

Designer:	Rex Inc.	Hat #283	
Material:	Felt and mesh	Band:	None
Color:	Tan	Lining:	None
Dimensions:	7" wide / 3.5" deep	Sweatband:	Black grosgrain and lace
Condition:	Excellent	Brim:	None

Description: Tan pillbox hat "made to order" by "Rex Inc., Beverly Hills, California" The crown is open 3" wide with tan netting covering the opening.



## UCO Fashion Museum Collection

### 1940s Navy Blue Straw Hat with Veil, Ribbon and Paste Buckle

Designer: Unknown

Material: Straw and velvet

Color: Navy blue

Dimensions: 1" wide / 1" deep

Condition: Good

Hat #300

Lining: none

Sweatband: red & white striped ribbon

Brim: 2" - 2.5"

Description: A navy blue straw hat with flue velvet ribbon under the brim on one side, wrapped around the crown, and looped through a rhinestone square buckle in front. The hat has a blue veil which is slightly damaged. Inside the hat are two V shaped wires wrapped with blue velvet., and a wrapped wire by the sweatband.



# UCO Fashion Museum Collection

## 1940s Wide Brimmed Black Straw, a Vera Whistler original

Designer: Vera Whistler Original  
Material: Straw  
Color: Black  
Dimensions: 18" wide / 2" deep  
Condition: Very Good

Hat #303  
Lining: None  
Sweatband: None  
Brim: 4" - 6.5"

Description: A wide brimmed black straw hat with a low crown. The crown a 3" black grosgrain triangle around it. There is a black velvet wrapped wire attached to the bottom of the crown which extends below the brim.



# UCO Fashion Museum Collection

## 1940s Wide Brimmed Brown Straw with Orange Feathers

Designer: New York Melbourne Original Design  
Material: Felt and feathers  
Color: Brown and orange  
Dimensions: 16" wide x 2.5" deep  
Condition: Very Good

Hat #304  
Lining: None  
Sweatband: gold grosgrain with gold braid  
Brim: 5" - 5.5"

Description: A wide brimmed brown felt hat with a 1.5" wide brown grosgrain around the crown with a bow on the left side. Orange feathers are attached from the bow, around the front and to the other side. There is a brown grosgrain chinstrap with a stretch cord in the middle.



1940s~1950s



# UCO Fashion Museum Collection

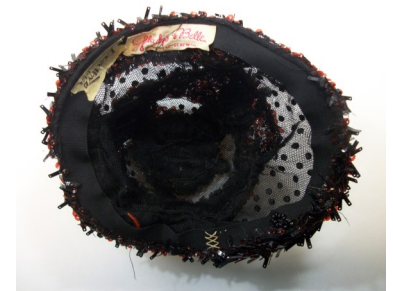
## 1940s-50s Black Net Hat with Sequins & Beads

Circa: 1940s-50s  
Designer: Gladys & Belle, 20 West 57<sup>th</sup> Street, New York  
Store: Dorothy's, Tulsa  
Lining: none  
Condition: Very good

Hat #15

Sweatband: black grosgrain  
Dimensions: 8" wide / 3" deep

Black net hat with dark brown and black sequins and beads. A black velvet bow is on the top of the crown.



## UCO Fashion Museum Collection

### 1940s-50s Black Calot with Swirl Designs by Lorie

Designer: Lorie, 57<sup>th</sup> Street, New York

Hat #18

Style: Calot

Sweatband: none

Dimensions: 6.5" wide x 7" long / 4" deep

Lining: black material

Condition: Very Good

Black calot cap style hat with swirl designs. There is a small amount of black netting still attached to the lining, so at one time it had a veil in front.



# UCO Fashion Museum Collection

## 1940s-50s Green Hat with Flowers & Veil by Marge Hats

Inside tag: Marge Hats

Hat #27

Style: Flowers

Sweatband:

Lining: None

Dimensions: 7" wide / 2" deep

Condition: Very Good

White and yellow flowers, and green leaves adorn this pillbox shaped hat. There is a green veil in front, The crown has netting covered with flowers and leaves.



## UCO Fashion Museum Collection

### 1940s-50s Black Open Crowned Casque by I. Magnin & Co.

Designer: I. Magnin & Co.

Style: Chaplet

Sweatband: none

Dimensions: 7" wide x 6" long / 2" deep

Hat #36

Material: wire, net and velvet ribbon

Lining: none

Condition: Excellent

Black half hat, or chaplet with an open crown and black velvet ribbons on all sides with a bow in the back.



## UCO Fashion Museum Collection

### 1940s-50s Black Satin Brimless Hat with Feathers by Mr. John

Designer tag: Mr. John Boutique, New York, Paris  
Style: Feather  
Sweatband: Black grosgrain  
Dimensions: 0.5" wide / 2" deep  
Condition: Excellent

Hat #54  
Material: satin and feathers  
Lining: none  
Brim: none

Black satin brimless hat with black ostrich feathers attached ½" above the rim. There is a black satin bow off-center in the back, and 2 wrapped wire side pieces.



# UCO Fashion Museum Collection

## 1940s-50s Feather Pillbox with Pheasant Feathers

Designer tag: None  
Style: Feather Pillbox  
Lining: Tan fabric  
Condition: Excellent

Hat #55  
Material: Feathers  
Sweatband: none

Pillbox hat covered with pheasant feathers. There are 2 long pheasant feathers on the left side with a brown and green velvet bow. The hat has 2 wrapped wires on each side



# UCO Fashion Museum Collection

## 1940s-50s Blue Feather Bandeau by Andrea Fashions

Inside Tag: Andrea Fashions  
Style: Feather bandeau  
Sweatband: None  
Dimensions: 4" wide / 7" long  
Condition: Good

Hat #64  
Material: feathers, felt  
Lining: None  
Brim: None

Feather bandeau with blue and black iridescent feathers attached to a black felt base. The feathers on the crown are covered with black net. It might have had a veil attached to front at one time.



Top View

# UCO Fashion Museum Collection

## 1940s-50s Pink Feather Bandeau

Inside tags: None  
Style: Feather bandeau  
Dimensions: 16" long x 1-2" wide

Hat #65  
Material: pink feathers  
Condition: Fragile

Pink feather bandeau with glitter on the feather edges on the crown.





## UCO Fashion Museum Collection

### 1940s-50s Multicolored Brown Feather Bandeau

Inside tags: None  
Style: Feather Bandeau  
Dimensions: 7" long x 2" wide

Hat #66  
Lining: lime green fabric  
Condition: Good

Bandeau covered with black and brown feathers. The underside is covered with lime green fabric and has some stains on it.



# UCO Fashion Museum Collection

## 1940s-50s White Feather Bandeau

Inside tag: None

Style: Feather bandeau

Dimensions: 7" wide

White feather headband with white corded material lining underneath. The lining has some stains, probably from the glue used.

Hat #67

Lining: white corded material

Condition: Good



# UCO Fashion Museum Collection

## 1940s-50s Red Straw Hat by Chanda

Designer tag: Chanda

Material: Straw and feathers

Lining: None

Dimensions: 7" wide / 2" deep

Red, green, blue, gold and white straw hat with a whisp of iridescent feathers on one side. The top of the hat and sides have a spiral design of all the colors. The brim is rolled and is solid red. There are 2 small hair combs inside. Donated by Mrs. Catherine (Lynn) Adams, Sept. 28, 1987, original acquisition #133.8717.13.

Hat #72

Sweatband: Green Grosgrain

Brim: Rolled

Condition: Excellent



# UCO Fashion Museum Collection

## 1940s-50s Multicolored Turban Style Hat by Emme, Inc., NYC

Designer tag: Emme Inc., New York  
Style: Turban  
Sweatband: Black grosgrain  
Dimensions: 7.5" wide / 4" deep  
Condition: Excellent

Hat #74  
Material: Fabric  
Lining: White fabric  
Brim: None

Turban style hat made with blue, and multicolored green fabric. A matching fabric bow is in front and it has a hat pin with a black fabric square at the end.



## UCO Fashion Museum Collection

### 1940s-50s Pink Pillbox with Black Velvet by Helen Liebert

Designer tag: Helen Liebert, Savoy Plaza, NY

Hat #75

Style: Pillbox

Material: pink fabric, netting, black velvet

Lining: Pink netting

Dimensions: 7" wide / 3" deep

Condition: Excellent

Close fitting hat with multiple shades of pink fabric wrapped around it. There are two black velvet attachments which go around the head and overlap in front.



# UCO Fashion Museum Collection

## 1940s-50s Black Felt Hat with Black Beads

Tags: None  
Style: Pillbox  
Sweatband: Black grosgrain  
Dimensions: 7.5" wide / 3" deep  
Condition: Very good

Hat #80  
Material: Felt and beads  
Lining: None  
Brim: 1" wide

Black felt hat with a 1" upturned brim. The outside of the brim and the band around the crown have large black beads attached.



# UCO Fashion Museum Collection

## 1940s-60s Navy Blue Cloche

Inside tags: None  
Style: Cloche  
Sweatband: None  
Dimensions: 9" wide / 9" deep  
Condition: Excellent

Hat #81  
Material: Lace and horsehair?  
Lining: None  
Brim: 1"-2"  
Color: Navy blue

Navy blue lace cloche hat with attached designs on each side. The left side has an arrowhead shaped rhinestone pin attached



## UCO Fashion Museum Collection

### 1940s-50s Straw Pillbox with Autumn Leaves Attached

Inside tags: None  
Style: Pillbox  
Sweatband: Tan grosgrain  
Dimensions: 7.5" wide / 3" deep  
Condition: Excellent

Hat #93  
Material: Straw  
Lining: none  
Brim: none

Straw hat with tan grosgrain ribbon around the bottom. The sides have autumn colored leaves attached, and there are 2 leaves inside at the sweatband seam.





# UCO Fashion Museum Collection

## 1940s-50s Black Brimless Straw Hat by Jan Leslie

Designer tag: Jan Leslie, custom design

Style: Brimless

Sweatband: Black grosgrain

Dimensions: 7" wide / 2" deep

Condition: Excellent

Black straw hat with a depressing around the crown.

Hat #101

Material: Straw

Lining: None



# UCO Fashion Museum Collection

## 1940s-50s Brown & Orange Felt Hat by Veola Modes, New York

Inside tag: Veola Modes, New York  
Size tag: 22 ½  
Style: Wide brimmed  
Sweatband: Brown grosgrain  
Dimensions: 12" wide / 4" deep  
Condition: Excellent

Hat #102  
Inside stamp: Lido Venezia, imported from Italy  
Material: Felt  
Lining: none  
Brim: 2.5"-3"

Dark brown felt hat with orange felt under the brim and an orange felt round band. The outside of the hat has small gold metal flowers attached all over.



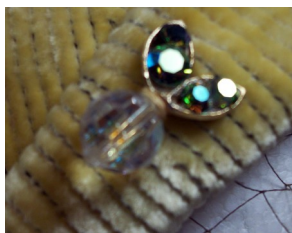
# UCO Fashion Museum Collection

## 1940s-50s Yellow Corduroy Hat by Chanda

Designer tag: Chanda  
Style: Brimless  
Sweatband: Red grosgrain  
Dimensions: 8" wide / 4" deep  
Condition: Excellent

Hat #106  
Material: Fabric and net  
Lining: Brown lace  
Brim: 1" in front

Yellow corduroy hat with a small upturned brim in front with a small rhinestone and bead attached. The hat has a brown veil in front.



## UCO Fashion Museum Collection

### 1940s-50s Cream Straw Hat with Black Bow from Scherman, NYC

Inside Tag: Scherman, Fifth Avenue, New York

Hat #107

Material: Straw and ribbon

Sweatband: Brown grosgrain

Dimensions: 8" wide / 4" deep

Band: Folded black grosgrain

Condition: Excellent

Lining: None

Brim: None

Cream colored straw hat with a small black band and a large black bow in front.



## UCO Fashion Museum Collection

### 1940s-50s Cream Turban Pillbox by Grace Burney, Okla. City

Inside tag: Grace Burney, Oklahoma City

Style: Pillbox

Sweatband: Cream grosgrain

Dimensions: 7" wide / 4" deep

Condition: Very Good

Cream colored hat with softly draped sheer fabric on the sides. The inside lining is made of silver metallic material.

Hat #110

Material: Fabric

Lining: Silver fabric

Brim: none



## UCO Fashion Museum Collection

### 1940s-50s Blue Fabric Pillbox

Inside tags: None  
Style: Pillbox  
Sweatband: Silver bric-a-brac  
Dimensions: 7" wide / 4" deep  
Condition: Excellent

Hat #111  
Material: Fabric  
Lining: shiny silver material  
Brim: None

Fabric pillbox hat in a patterned fabric of blues, greens and some white patterns. The inside is lined with a metallic silver material and has silver bric-a-brac along the seam.



## UCO Fashion Museum Collection

### 1940s-50s Cream Fabric Pillbox from Balliet's, Okla. City

Store tag: Balliets, Oklahoma City, Okla.

Hat #112

Style: Pillbox

Material: Fabric

Sweatband: Cream grosgrain

Lining: Cream fabric

Dimensions: 7" wide / 4" deep

Brim: None

Condition: Very Good

Cream colored fabric pillbox hat with soft folds around the sides. It's lined with cream colored fabric. There is some soiled areas on the brow.



# UCO Fashion Museum Collection

## 1940s-50s Blue Fabric Turban from Al Rosenthal's, Okla. City

Store tag: Al Rosenthal's Inc., Oklahoma City  
Style: Pillbox  
Sweatband: None  
Dimensions: 7" wide / 4" deep  
Condition: Excellent

Hat #113  
Material: Fabric  
Lining: blue fabric w/ flower patterns  
Brim: none

Soft, dark blue fabric covers this turban style pillbox hat. It has a stiff bow that hangs over the edge toward the right front. Inside there are two small side combs.





# UCO Fashion Museum Collection

## 1940s-50s Brown Wool Pillbox by Rivera

Inside tag: Rivera  
Style: Pillbox  
Sweatband: Brown grosgrain  
Dimensions: 7" wide / 6" deep  
Condition: Good

Hat #114  
Material: Wool  
Lining: Dark brown material  
Brim: None

Brown wool hat with two gold buttons on the right side and folded black grosgrain ribbon surrounding the crown. The fabric has a few small moth holes



# UCO Fashion Museum Collection

## 1940s-50s Fuzzy Red Breton Felt Hat

Inside tag: None

Style: Breton

Inside stamp: Princess, genuine lustre, hare's fur, body made in Italy

Sweatband: Red grosgrain

Dimensions: 8" wide / 3" deep

Condition: Excellent

Hat #116

Material: Felt

Lining: None

Brim: 2" upturned

Red fuzzy felt hat with a depressed crown and an upturned brim. The fabric band is 2" wide, folded, and has various colors including green, orange, yellow, black.



# UCO Fashion Museum Collection

## 1940s-50s Two Tone Brown Hat by Maggie Originals

Inside tag: Maggi Originals  
Style: Open crowned  
Sweatband: Tan grosgrain  
Dimensions: 7" wide / 3" deep  
Condition: Very Good

Hat #131  
Material:  
Lining: None  
Brim: None

Open crowned hat with interlacing two-tone brown straw ribbon effect.



## UCO Fashion Museum Collection

### 1940s-50s Black Cellophane Deep Crowned Straw

Inside tag: Elizabeth  
Style: Straw  
Sweatband: Black grosgrain  
Dimensions: 11" wide / 5" deem  
Condition: Excellent

Hat #135  
Material: Cellophane Straw  
Lining: None  
Brim: 2"

Black folded straw over a horsehair base. It has a black velvet bow on the right side.



# UCO Fashion Museum Collection

## 1940s-50s Navy Blue Cellophane Pillbox by Yvette

Inside tag: Yvette, New York  
Style: Pillbox  
Sweatband: Blue grosgrain  
Dimensions: 7" wide / 3.5" deep  
Condition: Excellent

Hat #136  
Material: Cellophane Straw  
Lining: None  
Brim: None

Dark navy blue cellophane straw hat with a navy blue velvet crown. There is a blue velvet bow attached to the front. There is a 22 ½" size tag attached to the sweatband.



## UCO Fashion Museum Collection

### 1940s-50s Tan Felt Hat with Navy Band by Alice May

Inside tag: Alice May, Fifth Ave., New York

Style: Wide brimmed

Sweatband: Navy blue grosgrain

Dimensions: 13" wide / 5" deep

Condition: Excellent

Hat #144

Material: Felt and fabric

Lining: None

Brim: 3.5" – 4" wide

A classy tan felt hat with navy blue felt on the underside. The band is navy blue fabric which wraps around the crown and then it has a triangle draping over the left side of the brim. The back of the band has a piece of the navy blue fabric wrapped around the band and draping to the edge of the brim. Inside there is a small hair comb in the front, and a black elastic band.



# UCO Fashion Museum Collection

## 1940s-50s Off-White Fabric Turban by Sally Victor

Inside tag: Sally Victor Boutique, New York  
Style: Turban  
Sweatband: Tan grosgrain  
Dimensions: 7" wide / 5" deep  
Condition: Very Good – slight stains in the front

Hat #150  
Material: White fabric  
Lining: White fabric  
Brim: None

Soft off-white fabric turban with a knot of fabric in the back.



## UCO Fashion Museum Collection

### 1940s-50s Wide Brimmed Cartwheel Straw by McHenry's Hat

Inside tag: Loveman's Inc., McHenry's Hat, Nashville  
Style: Wide brimmed picture hat  
Sweatband: Black grosgrain  
Dimensions: 17" wide / 4" deep  
Condition: Excellent

Hat #151  
Material: Straw  
Lining: None  
Brim: 3" - 5"  
Size tag: 22

Natural straw hat with an open lattice black edging on the wide brim. The band is a corded double velvet with a bow in the front. The edge of the straw brim, and the edge of the black lattice trim are covered with black velvet.





# UCO Fashion Museum Collection

## 1940s-50s Pink Satin Pillbox

Designer tag: None  
 Style: Shallow pillbox  
 Band: None  
 Lining: Pink fabric  
 Dimensions: 5"-7" wide / 1" deep

Hat #168  
 Material: Satin fabric  
 Sweatband: None  
 Brim: None  
 Condition: Good

Small pink satin hat with a turban effect on the sides. The fabric is knotted in front, and there are 2 pink roses with leaves attached on the back. The rose petals have rhinestones attached. The inside has a small hair comb in front and a wrapped wire loop in back.



# UCO Fashion Museum Collection

## 1940s-50s White Fur & Black Velvet Pillbox made in Paris

Circa: 1940s-50s

Designer tag: Modes Annette, 212, rue de Rivoli Paris. Tuileries

Hat #175

Style: Pillbox

Material: Velvet, fur and netting

Band: None

Sweatband: Black grosgrain

Lining: Black fabric

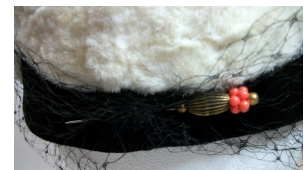
Brim: None

Dimensions: 8" wide / 3" deep

Inside: black elastic strap

Condition: Very Good

Black velvet pillbox hat with white fur attached to the sides. A black veil partially covers the hat. There is a decorative coral and metal hat pin in the back, and a black and gold decorative pin on one side. A very classy looking evening hat.



# UCO Fashion Museum Collection

## 1940s-50s Brown Mink Pillbox

Designer tag: None  
Style: Pillbox  
Band: None  
Lining: Brown fabric  
Dimensions: 6" wide / 2" deep

Hat #176  
Material: Mink and net  
Sweatband: None  
Brim: None  
Condition: Excellent

Small round, brimless mink hat with 2 rows of brown mink separated by brown netting. The top roll of the hat has a hole in the middle, like a donut. There are two small hair combs inside. Donated by Mrs. Catherine "Lynn" Adams, Sept. 28, 1987. Original acquisition #113.87.17.



## UCO Fashion Museum Collection

### 1940s-50s Brown Fur Pillbox with Bow by Grace Burney

Designer tag: Grace Burney, Oklahoma city  
Style: Pillbox  
Band: None  
Lining: Black felt  
Dimensions: 6" wide / 2" deep  
Condition: Excellent

Hat #177  
Material: Fur and silk  
Sweatband: None  
Brim: None

Small navy silk pillbox with brown fur around the edges. It has 4 navy blue silk bows attached to the sides. There are 2 small hair combs inside. Donated by Mrs. Catherine "Lynn" Adams, Sept. 28, 1987. Original acquisition #113.87.17.



## UCO Fashion Museum Collection

### 1940s-50s Light Brown Mink Pillbox from Saks Fifth Avenue

Inside tag: Saks Fifth Ave., Millinery Salon

Style: Pillbox

Band: None

Lining: Brown

Dimensions: 8" wide / 2" deep

Condition: Excellent

Light brown mink pillbox hat. The center of the crown is not covered by fur. There are two small hair combs inside.

Hat #179

Material: Fur

Sweatband: Brown grosgrain

Brim: None



## UCO Fashion Museum Collection

### 1940s-50s Dark Brown Mink Pillbox by Irene of New York

Designer tag: Irene of New York / I.Magnin & Co.  
Style: Pillbox  
Band: None  
Lining: Red fabric  
Dimensions: 7" wide / 3" deep  
Condition: Excellent

Hat #180  
Material: Fur  
Sweatband: Brown grosgrain  
Brim: None

Dark brown mink pillbox hat with a red lining. It has two small hair combs inside.



## UCO Fashion Museum Collection

### 1940s-50s Champagne Mink Hat with Satin from Al Rosenthal's

Store tag: Al Rosenthal's Inc., Oklahoma City

Style: Pillbox

Band: None

Lining: Grey fabric

Dimensions: 8" wide / 3" deep

Champagne colored mink hat. It has mink around the sides and on top of the crown, with champagne satin in-between. There is a matching fabric strip in the back.

Hat #181

Material: Fur

Sweatband: Grey grosgrain

Brim: None

Condition: Good



## UCO Fashion Museum Collection

### 1940s-50s Deep Crowned Brown Mink Hat by Emme Inc.

Designer tag: Emme Inc., New York  
Style: Cossack  
Band: None  
Lining: Brown fabric  
Dimensions: 8" wide / 6" deep  
Condition: Excellent

Hat #182  
Material: Fur  
Sweatband: Brown grosgrain  
Brim: None

Deep crowned, dark brown mink hat with a brown fabric lining, and one small hair comb in the front.





# UCO Fashion Museum Collection

## 1940s-50s Faux Leopard Fur Pillbox by Maggi Originals

Designer tag: Maggi Originals  
Style: Pillbox, open-crowned  
Band: None  
Lining: Rust colored fabric  
Condition: Excellent

Hat #183  
Material: Leopard fur  
Sweatband: Brown grosgrain  
Dimensions: 7" wide / 4" deep

Open-crowned pillbox made with faux leopard fur. The back has a black grosgrain bow with a decorative hat pin. Donated by Ethel Findley (wife of Robert Findley), January 25, 1993. Original acquisition #187.93.9.



## UCO Fashion Museum Collection

### 1940s-50s Wedding Circlet with Pink Flowers by Kay & Guy Anderson

Designer tag: Kay & Guy Anderson  
Style: Open crowned  
Band: None  
Lining: None  
Dimensions: 6.5" wide / 1" deep  
Condition: Good, but fragile

Hat #184  
Material: Net, flowers and fabric  
Sweatband: None  
Brim: None

A wedding hat with a green velvet rim which is covered with a taupe net and flowers. Donated by Mrs. Catherine "Lynn" Adams, Sept. 28, 1987. Original acquisition #113.87.17.



# UCO Fashion Museum Collection

## 1940s-50s Dark Brown Mink Hat, a Frieman Original

Inside tag: New York, Frieman Original  
Style: Toque  
Band: None  
Lining: Brown  
Condition: Excellent

Hat #185  
Material: Fur  
Sweatband: Brown grosgrain  
Dimensions: 7" wide / 4" deep

Dark brown mink hat, no decorations.



# UCO Fashion Museum Collection

## 1940s-50s White Turban with Fur and Satin by Lloyd Wright

Designer tag: Lloyd Wright  
Style: Turban  
Band: None  
Lining: Silver fabric

Hat #186  
Material: Fur and satin  
Sweatband: White grosgrain  
Dimensions: 7" wide / 4" deep

Condition: Fair – some of the lining is torn





# UCO Fashion Museum Collection

## 1940s-50s Natural Straw with Brown Velvet Band by Hardesty

Designer: Hardesty

Material: Straw, feathers

Color: Natural

Dimensions: 9.5" wide / 3.5" deep

Condition: Excellent

Description: Natural colored straw hat with a brown velvet band and 5 brown feathers on the left side. The brim is wider in the front.

Hat #194

Lining: Beige netting

Sweatband: Tan grosgrain

Brim: 0.75" - 1.5"



# UCO Fashion Museum Collection

## 1940s-50s Brown Straw Hat by D. Charles

Designer: "design by d. Charles"      Hat #195  
Material: Straw      Lining: Brown netting  
Color: Golden brown      Sweatband: Brown grosgrain  
Dimensions: 12" wide / 4" deep      Brim: 1.5" upturned in back  
Condition: Excellent  
Description: A 1" wide straw hat woven loosely. It has a brown grosgrain ribbon band and sweatband. The inside has 2 small hair combs and brown netting.



## UCO Fashion Museum Collection

### 1940s-50s Natural Straw with Cream Velvet Band by Rivera

Designer: Rivera  
Material: Straw and velvet  
Color: Natural straw and cream  
Dimensions: 8.5" x 10" / 3" deep  
Condition: Very Good  
Description: Natural straw hat with cream colored velvet around the brim edge, and a cream velvet fabric band with a big bow. The hat has a black chin strap, but it's very worn.

Hat #203  
Lining: None  
Sweatband: Cream grosgrain  
Brim: 1"-1.5"





# UCO Fashion Museum Collection

## 1940s-50s Small Black Derby by de Villar, Beverly Hills

Hat #207

Designer: de Villar, Beverley Hills

Material: Felt, satin, and fabric

Color: Black and cream

Dimensions: 12" wide/ 4" swwp

Condition: Excellent

Description: Small black felt hat with a gathered black and cream fabric poof on one side. It has a black satin band, and the rim of the brim is trimmed with black satin. The inside dimension is 5.5" wide. The hat has a black chinstrap and 2 small hair combs.

Style: Derby

Lining: None

Sweatband: Black grosgrain

Brim: 2.5"-5"

Band: Black satin



## UCO Fashion Museum Collection

### 1940s-50s Brown Straw with Veil Whimsical Decoration by Leslie James

Designer:	Leslie James, California	Hat #212	
Material:	Straw, feathers and ribbon	Size tag:	22
Color:	Dark brown and orange	Lining:	None
Dimensions:	11" x 10.5" wide / 2.5" deep	Sweatband:	Brown grosgrain
Condition:	Excellent	Brim:	1.5" - 2.5"
Description:	Dark brown straw hat with a wide dark green satin ribbon band that ends with a bow in the back. Green netting with small orange balls on the bottom of the netting is attached to the brim. The side has 2 orange feather pom poms and several green bird of paradise fathers.		



Bow in back

# UCO Fashion Museum Collection

## 1940s-50s Brown Felt Cloche with Yarn by Toni Bullocks

Designer:	Toni Bullocks, Pasadena	Hat #222	
Material:	Felt	Band:	Yarn
Color:	Brown body/ grey/black/grey band	Lining:	None
Dimensions:	8" wide / 5" deep	Sweatband:	Brown grosgrain
Condition:	Excellent	Brim:	None
Description:	Brown felt hat with twisted grey, black and brown yard around the hat with yarn ends in the back.		



# UCO Fashion Museum Collection

## 1940s-50s Yellow Wool and Navy Hat

Designer: Unknown

Material: 100% wool felt

Color: Gold and navy blue

Dimensions: 8" wide / 3" deep

Condition: Excellent

Description: A hand stitched hat made with yellow gold felt. It has navy blue felt on the crown, and a navy blue grosgrain band. Toward the front there are 2 blue pom-poms standing on stems, and a bow. The back of the size tag reads "New York Creation"

Hat #223

Band: Navy blue grosgrain

Lining: None

Sweatband: Navy blue grosgrain

Brim: Upturned—2" / Size = 22



# UCO Fashion Museum Collection

## 1940s-50s Black Fabric Beret with Beads by G. Howard Hodge

Designer: G. Howard Hodge

Hat #227

Material: Felt and beads

Band: None

Color: Black

Lining: Silver material

Dimensions: 8" wide / 1" deep

Sweatband: Black grosgrain

Condition: Excellent

Brim: None

Description: Black fabric beret with black beads sewn on in a spiral design and a 1" high piece on the top covered with beads. The side has one piece over the temple with beading, and the hat has a black elastic chin strap.



# UCO Fashion Museum Collection

## 1940s-50s Open Crowned Black Wide Brimmed Hat

Designer:	Unknown	Hat #263
Material:	Net and velvet	Store tag: Slattery's, Boston, Brookline, Wellesley
Color:	Black	Band: Black velvet
Dimensions:	16" wide	Sweatband: Black grosgrain
Condition:	Excellent	Brim: 5" wide / Lining: None

Description: Wide brimmed black hat with an open crown, and a black velvet band with black velvet ribbons draping down the back.



# UCO Fashion Museum Collection

## 1940s-50s Black Satin Pillbox by Jan Leslie

Designer: Jan Leslie, Custom Design

Material: Satin and lace

Color: Black

Dimensions: 8" wide / 2.5" deep

Condition: Excellent

Hat #270

Band: None

Lining: Black lace

Sweatband: Black grosgrain

Brim: None

Description: Black satin pillbox hat with no adornment. It has 2 side combs inside.



# UCO Fashion Museum Collection

## 1940s-50s Brown Straw Cartwheel Hat

Designer:	Unknown	Hat #301
Material:	Straw and fabric	Lining: None
Color:	Dark brown	Sweatband: Brown grosgrain
Dimensions:	18" wide / 3" deep	Brim: 4.5" - 6.5"
Store tag:	Loveman's Inc., McHenry's Hat, Nashville	Size tag: 22
Condition:	Very Good	

**Description:** A dark brown wide brimmed sun hat that has raised patterns in the straw. It has a multicolored 6" wide striped ribbon tied around the crown.





## UCO Fashion Museum Collection

### 1940s-50s Wide Brimmed Plum Straw Hat by Blossom Hats

Designer: Blossom Hats, Paris, NY  
Material: Straw  
Color: Plum and purple  
Dimensions: 15" wide x 12" long  
Condition: Very good

Hat #302  
Lining: None  
Sweatband: Plum grosgrain  
Brim: 1" - 4"

Description: A plum colored wide straw hat with a depressed crown. The brim is folded in the back and it has 2 velvet bows attached: one is plum, the other is purple. There is an attached navy chin strap of gathered, doubled ribbon.



# UCO Fashion Museum Collection

## 1940s-50s Black Cellophane Straw Hat

Designer tag: None

Hat #18-1

Dimensions: 10" wide, 3.5" deep

Lining: Black Netting / Brim: 1"-2"

Condition: Excellent

Sweatband: Black grosgrain

Description: A black cellophane straw hat done in alternating blacks (one matte, one shiny). The band is a wide, doubled over, grosgrain ribbon which the end slipping through an attached loop on the right side. The brim is wider in the front than in the back.



Top



Back view



Inside view

# UCO Fashion Museum Collection

## 1940s-50s Russian Fur Ushanka

Condition: Good

Hat #18-2

Designer: Unknown

Inside #: 51-63

Dimensions: 9" high x 10" wide x 3.5" deep

Lining: Quilted fabric

Donated by: Dr. Kaye Sears

Description: A brown fur cap with ear flaps that can be tied up to the crown or fastened under the chin. The donor purchased this hat in Russia on one of her trips. The lining has a small stain.



Inside tag



Lining



Top view

## UCO Fashion Museum Collection

### 1940s-50s Brown Beaded Pillbox by Alfreda, Inc.

Inside tag: Alfreda, Inc., Paris / New York

Hat #18-3

Dimensions: 8" diameter, 1.5" deep

Lining: Gold fabric

Condition: Very Good

Sweatband: Tan grosgrain

Description: A brown hat with black and white beads over gold braid covering the top and under the front brim. It has 2 wire side extensions which are covered with tan velvet. The front has a small brown velvet bow with a single gold painted feather attached.



Top view



Back view



Front detail



# UCO Fashion Museum Collection

## 1940s-50s Black Felt Calot by Madcaps

Designer tag: Original Design by Madcaps, New York, Reg.

Hat #18-4

Dimensions: 6.5" wide, 1" deep

Lining: Black

Condition: Excellent

Sweatband: Black grosgrain

Description: A black felt calot style hat with stiff black netting attached from the each side and in front. The netting has attached black leaf designs. The back has an attached black bow and a black wrapped wire in a tear shape.



## UCO Fashion Museum Collection

### 1940s-50s Jan Leslie Cream Brocade Pillbox

Designer tag: Jan Leslie custom design

Size tag: 22

Hat #18-5

Dimensions: 7" diameter, 2" deep

Lining: Cream mesh

Condition: Excellent

Sweatband: Tan Grosgrain

Description: An ornate cream brocade pillbox hat. The brocade contains metallic gold threads and ivory as part of its floral motif. This motif is echoed in the hand sewn silver rhinestones and brown beaded embellishments around the brim. The inside has a stiffened cream mesh lining.



## UCO Fashion Museum Collection

### 1940s-50s Ere Nouvelle Beaded Open Crown Calot

Designer tag: Ere Nouvelle, New York, Reg. U.S. Pat. Off.

Hat #18-6

Dimensions: 7.5" high and wide

Lining: Gold fabric

Condition: Excellent

Sweatband: Tan grosgrain

Description: An open crowned cocktail hat heavily embroidered in seed pearls, pearl drops, and clear prong rhinestones. It has clusters of beads in flower patterns, and the open crown has decorated semicircles that meet on top.



## UCO Fashion Museum Collection

### 1940s-50s Navy Blue Straw Hat with Daisies

Designer tag: None

Hat #18-7

Dimensions: 10" long x 9" wide x 4.5" deep

Lining: None / Brim: 3/4"-2.75" wide

Condition: Excellent

Sweatband: Black grosgrain

Description: A navy blue straw hat with a rolled brim. The brim is wider in the front and on the right side. The small brown band has 2 bows in toward the right side of the hat with 11 daisies attached. The hat is unlined.



Top view



Back view



Inside views



**UCO Fashion Museum Collection**  
**1940s-50s Taupe Cellophane Straw by Alfreda Inc.**

Designer tag: Alfreda Inc., Paris / New York

Hat #18-8

Dimensions: 9" long x 8" wide x 3" deep

Lining: None / Brim: 1.5" x 1"

Condition: Fair, some loose beads

Sweatband: Tan Grosgrain

Description: A cellophane straw hat, unlined, with silver braid attached around the crown which ends as a bow in the back. The band has clear round, and oblong beads around 3/4 of the hat which were hand sewn onto the tope of the braid with string. Some of the beads are loose.



Top



Back



Inside views

## UCO Fashion Museum Collection

### 1940s-50s Evelyn Varon Exclusive Open Crowned Blue Bow Calot

Designer tag: Evelyn Varon Exclusive

Hat #18-9

Dimensions: 7" -7.5" wide x 2" deep

Lining: None

Condition: Very Good

Description: This open crown hat has a blue velvet wrapped wire frame with blue netting attached on top. The frame has extensions on both sides. Over the netting are two large velvet bows in two blue tones. It has visible wear and some of the blue netting is torn.



Top view



Back view



Inside views

## UCO Fashion Museum Collection

### 1940s-50s Valerie Modes Cream Straw Pillbox

Designer tag: Valerie Modes

Hat #18-10

Dimensions: 8" wide x 2"-3.5" deep

Lining: None / Size tag: 22

Condition: Excellent

Sweatband: Cream grosgrain

Description: A cream straw pillbox hat with a big cream organza bow in the back. It has a hat pin with white on the end. The front is deeper than the back.



Top view



Back view



Inside view

## UCO Fashion Museum Collection

### 1940s-50s Black Beret with Black Beads by Amy

Designer tag: Amy, New York

Hat #18-11

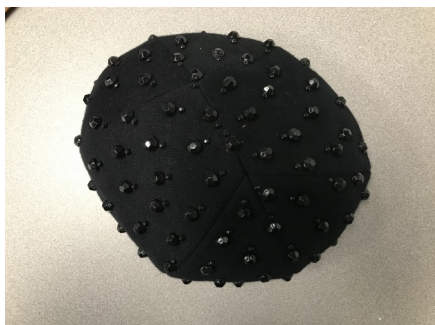
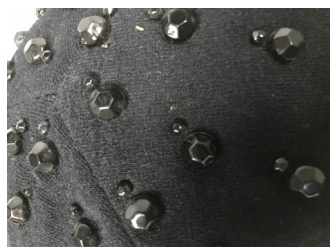
Dimensions: 8" long x 8" wide x 3.5" deep

Lining: Black fabric

Condition: Very Good

Sweatband: Green grosgrain

Description: A black beret with black beads attached all over. It has a small brim with a small opening in back which has a piece of encased elastic attached. It has black fabric lining.



Top view

Back view

Inside views

# UCO Fashion Museum Collection

## 1940s-50s Black Velvet Half Hat

Designer tag: None

Hat #18-12

Dimensions: 7.5" long x 7" wide x 3" deep

Lining: Black fabric

Condition: Excellent

Sweatband: Black grosgrain

Description: A black velvet half hat with wide grosgrain ribbon inside along the edges. Black grosgrain is also attached on the outside edges and folded into points 13 points. Each point has a rhinestone attached.



Back view



Ribbon detail

## UCO Fashion Museum Collection

### 1940s-50s Brown Straw Hat with Flowers and Netting

Designer tag: None

Hat #18-16

Dimensions: 13" wide x 13.25 long x 3" deep

Lining: None / Brim: 2"-4"

Condition: Excellent

Sweatband: Brown Grosgrain

Description: A brown straw hat, unlined, with a thin brown velveteen ribbon band with a bow in the back. Yellow/brown flowers and some leaves are attached to the band, and black netting covers the flowers. The brim is 2" wide in the back and 4" wide in the front. A black elastic strap is attached underneath.



Top view



Back view



Inside view

## UCO Fashion Museum Collection

### 1940s-50s Dark Navy Blue Straw Lampshade Hat

Designer tag: None

Hat #18-17

Dimensions: 10" wide x 5" Deep

Lining: None / Brim: 3.25"

Condition: Excellent

Sweatband: Navy Grosgrain

Description: An unusual hat with a lampshade look. The crown consists of the part that shows above the brim but also has a section underneath with wire shaped around the head and covered with blue grosgrain. The brim is attached separately, is folded over at the edges, and shaped in a wavy pattern. A thin matching straw band covers where the crown and brim join and the band ends with a bow in the back.



Top view



Back view



Inside view

# UCO Fashion Museum Collection

## 1940s-50s Black Whimsey

Designer tag: none

Hat #18-18

Condition: Fair, some tears in the netting

Description: A black whimsy with six sheer black rounded fabric tubes on top attached with a black velvet bow in back. Each tube has a small black flower and feather attached at the end.



Back view



Top view



## UCO Fashion Museum Collection

### 1940s-50s Black Velvet Pillbox with Black Grosgrain Ribbon

Designer tag: None

Dimensions: 6.5" x 7" x 1.5" deep

Condition: Very Good

Description: A black velvet cap with wide black grosgrain ribbon folded around the sides but in front the ribbon is opened up and forms a half bow with an end draping over one side. It has 2 small hair combs inside. The ribbon is hand-stitched on.

Hat #18-19 Lining:

Black fabric



Top View



Inside view

## UCO Fashion Museum Collection

### 1940s-50s Brown Straw with Leaves and Flowers

Designer tag: None

Hat#18-20

Dimensions: 13" wide, 3" deep

Lining: None

Condition: Good

Sweatband: Brown velvet ribbon

Description: An unusual shaped brown straw hat with a thin brown velvet band underneath, and a brown velvet bow on the left side. Yellow and brown flowers and leaves are attached 3/4 of the around with brown netting over the decorations. The netting is very damaged is attached on the sides..



Back view



Inside view

## UCO Fashion Museum Collection

### 1940s-50s Brown Fur Pillbox by Jean Sutton

Designer tag: Jean Sutton

Hat #18-22

Dimensions: 9" diameter, 2" deep

Lining: Black fabric

Condition: Very Good

Sweatband: Black fabric

Description: A dark brown fur pillbox. The inside is lined with hand sewn black fabric and it has a black satin sweatband. The band is slightly faded and there is minimal fraying on the edges of the label.



Top view



Back view



Inside view

## UCO Fashion Museum Collection

### 1940s-50s Black Velvet Deep Crowned Floppy Wide Brimmed Hat

Designer tag: None / Union Tag: Union made GD 529742 in U.S.A.

Hat #18-23

Dimensions: 10" wide / 8" deep

Lining: Black fabric / Brim: 2.75"-3.5"

Condition: Excellent

Sweatband: Black grosgrain

Description: A floppy black velvet hat with a tall crown. The wide brim is stitched all around in narrow bands. It has a wide black grosgrain band which loops in the back. The ends of the ribbon overlap the band on the right side and have a rolled piece of ribbon attached.



Back view

## UCO Fashion Museum Collection

### 1940s-50s Sally Victor Multi-Colored Feather Pillbox

Designer tag: Miss Sally Victor, New York

Hat #18-24

Dimensions: 7.5" diameter, 6.5" height

Lining: Black fabric

Condition: Good

Description: An extravagant black velvet pillbox hat covered in a swirling pattern of multicolored feathers. Teal and black make up the bulk of the feathers, but there are prominent red and yellow accents. The feathers build up on the crown to create a tufted plume center. Inside, there is a black fabric lining and a matching grosgrain band. There are two elastic loops on the side holding combs. The inside label is sewn on to the band, but there is some noticeable wear on one side of it.



Top view



Back view



Detail pics

## UCO Fashion Museum Collection

### 1940s-50s Gold Beaded Pillbox by Alfreda Inc.

Designer tag: Alfreda Inc., Paris, New York

Hat #18-26

Dimensions: 7.5" long, 7" wide, 1" deep

Lining: Netting

Condition: Fair

Sweatband: Tan grosgrain

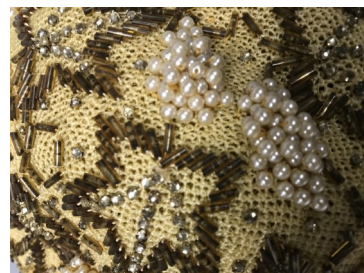
Description: A small pillbox with yellow netted fabric on top and as a lining. The top has star designs with long brown beads with rhinestones in the middle. Also attached are grape shaped designs with white beads. A partial gold netting is attached.



Top view



Back view



Beading detail

## Hat Designer Index

<b>Hat Designer Index</b>			
<b>Designer Name</b>	<b>Page #</b>	<b>Hat #</b>	<b>Circa</b>
Alfreda, Inc.	172	18-3	1940s-50s
Alfreda, Inc.	177	18-8	1940s-50s
Alfreda, Inc.	190	18-26	1940s-50s
Alice May	142	144	1940s-50s
Amy	180	18-11	1940s-50s
Andrea Fashions	119	64	1940s-50s
Avalon	15	206	1920s
Avalon	44	218	1930s-40s
Beatrice-Martin	90	234	1940s
Bits & Buttons	14	188	1920s
Blossom Hats	169	302	1940s-50s
Bluebird	11	11	1916-1920s
Chanda	26	244	1920s-30s
Chanda	80	196	1940s
Chanda	123	72	1940s-50s
Chanda	131	106	1940s-50s
D. Charles	159	195	1940s-50s
Dajon	61	47	1940s
Danciger	99	243	1940s
de Villar, Beverly Hills	161	207	1940s-50s
Emme, Inc.	42	214	1930s-40s
Emme, Inc.	71	94	1940s
Emme, Inc.	86	226	1940s
Emme, Inc.	152	182	1940s-50s
Emme, Inc.	124	74	1940s-50s
Ere Nouvelle	175	18-6	1940s-50s
Ethel	10	261	1910-1920s
Eve Tartar	32	105	1930s-40s
Eve, Chicago	93	237	1940s
Evelyn Varon	178	18-9	1940s-50s
Freiman Original, New York	155	185	1940s-50s
G. Howard Hodge	165	227	1940s-50s
Gage Handcraf	94	238	1940s
Gardner	27	245	1930s
Genevieve Bernard, Paris	64	60	1940s
Gladys & Belle	67	82	1940s

## Hat Designer Index

<b>Hat Designer Index (con't)</b>			
<b>Designer Name</b>	<b>Page #</b>	<b>Hat #</b>	<b>Circa</b>
Gladys & Belle, NYC	113	15	1940s-50s
Grace Burney, Okla. City	38	199	1930s-40s
Grace Burney, Okla. City	58	44	1940s
Grace Burney, Okla. City	133	110	1940s-50s
Grace Burney, Okla. City	148	177	1940s-50s
Hardesty	158	194	1940s-50s
Hattie Carnegie	37	197	1930s-40s
Hattie Carnegie	46	224	1930s-40s
Height of Fashion Hats	31	90	1930s-40s
Helen Liebert	52	17	1940s
Helen Liebert	125	75	1940s-50s
I. Magnin	63	59	1940s
I. Magnin & Co.	116	36	1940s-50s
I. Magnin & Co., Raleigh	19	256	1920s
Irene of New York	73	98	1940s
Irene of New York	150	180	1940s-50s
Jan Leslie	72	97	1940s
Jan Leslie	129	101	1940s-50s
Jan Leslie	167	270	1940s-50s
Jan Leslie	174	18-5	1940s-50s
Jean Sutton	187	18-22	1940s-50s
Jean Tess, Paris	18	255	1920s
John Frederics Charmer	101	248	1940s
Kay & Guy Anderson	154	184	1940s-50s
Laddie Northridge	43	215	1930s-50s
Leslie James	47	266	1930s-40s
Leslie James	162	212	1940s-50s
Lilly Dache'	83	219	1940s
Lilly Dache'	95	239	1940s
Lloyd Wright	78	174	1940s
Lloyd Wright	98	242	1940s
Lloyd Wright	156	186	1940s-50s
Lorie, NYC	89	233	1940s
Lorie, NYC	114	18	1940s-50s
Madcaps	173	18-4	1940s-50s
Mad'Leine, Paris	45	231	1930s-40s
Maggi Originals	139	131	1940s-50s
Maggi Originals	153	183	1940s-50s



## Hat Designer Index

<b>Hat Designer Index (con't)</b>			
<b>Designer Name</b>	<b>Page #</b>	<b>Hat #</b>	<b>Circa</b>
Marche Hats, NYC	33	108	1930s
Marche Hats, NYC	70	88	1940s
Marche Hats, NYC	115	27	1940s-50s
McHenry's Hats	144	151	1940s-50s
Milbrae Exclusives	55	35	1940s
Mildred's, Duncan, Okla.	24	216	1920s-30s
Modes Annette, Paris	60	46	1940s
Morquez	82	205	1940s
Mr. D'	54	34	1940s
Mr. D'	157	192	1940s-50s
Mr. Jaques	56	37	1940s
Mr. John	41	213	1930s-40s
Mr. John	117	54	1940s-50s
Mr. John Jr.	96	240	1940s
Nat Frank	85	225	1940s
Parkridge Exclusives	50	7	1940s
Rex, Inc.	108	283	1940s
Rivera	76	115	1940s
Rivera	137	114	1940s-50s
Rivera	160	203	1940s-50s
Ronnie Hats	84	220	1940s
Sadye Landsman	40	209	1930s-40s
Sally Victor	35	191	1930s-40s
Sally Victor	39	202	1930s-40s
Sally Victor	77	156	1940s
Sally Victor	143	150	1940s-50s
Sally Victor	189	18-24	1940s-50s
Sonni, California	75	109	1940s
Starling	102	249	1940s
Toni Bullocks	163	222	1940s-50s
Vagn, Kobenhavn	97	241	1940s
Valerie Modes	179	18-10	1940s-50s
Veola Modes, New York	130	102	1940s-50s
Vera Whistler	110	303	1940s
Wilshire	74	104	1940s
Yvette	141	136	1940s-50s

## List of Hat Donors

Hats in the collection were donated by several women from Oklahoma. If it is known which particular hat(s) they donated, a notation was made on the catalog pages. Oftentimes, however, the log only indicated someone donated 3 pillbox hats, or 18 flowered hats, etc.

Following is a list of the ladies from the original acquisition log who donated hats. I have included the name of their husbands as well, if known.

Adams, Catherine (Lynn)

Apple, Mrs. Harry L.

Bohnard, Mary Lou

Britton, Mrs. John

Champlin, Joanna M.

Dulaney, Sylvia & Tom, donated for Virginia Dulaney

Earp, Lillian Mary Tidman (wife of Ansel Earp)

Ferma, Neva

Findley, Ethel (wife of Robert Findley)

Goodwin, Cici (wife of Tom Goodwin)

Hamilton, Kathleen

Kilpatrick, Elizabeth (wife of John Kilpatrick)

Lacy, Ann

Mayfield, Mrs. Lawrence

McFarland, Ruth (wife of Charles B. McFarland)

Morey, Mary Miles Mayo (wife of Jimmy D. Morey)

Rosenboom, Margaret

Russell, Lillian (wife of Jack Russell)

Smith, Mrs. Jack E.

Stalcup, Betty

Tilghman, Ann (wife of Charles Tilghman)

Weaver, Ann

Wilghman, Ann (wife of Charles Wilghman)

Wilson, Mary Frances Abel (wife of Tom B. Wilson)

Wright, Mrs. Peggy

## References

### Books

Smith, Desire. Hats with Values, Atglen, PA: Schiffer Pub., LTD, 1996.

Reilly, Maureen E., et. al. Women's Hats of the Twentieth Century for Designers and Collectors, Atglen, PA: Schiffer Pub., LTD, 1997.

### Websites

"1940s Hats History", vintagedancer.com, <https://vintagedancer.com/1940s/1940s-hats/>

"Vintage Millinery Marks & Hat Labels", vintagevixen.com,  
<https://www.vintagevixen.com/pages/vintage-millinery-marks-hat-labels>

"Hanson Collection Vintage Fashion Hats", hansonhats.com,  
<http://hansonhats.com/Collection/Welcome.html>

"Vintage Fashion Guild Hat Resource", vintagefashionguild.org.,  
<https://vintagefashionguild.org/hat-resource/>

"Vintage Fashion Guild Hat Resource", vintagefashionguild.org.,  
<https://vintagefashionguild.org/label-resource/>