

Evening Gowns & Evening Wear in the Oklahoma Fashion Museum



1960s Sequined Gown



1960s Jacques Fath Dress



1960s Evening Gown



1950s Harvey Berin Dress

at the
University of Central Oklahoma

Compiled by Mary Huffman, Coordinator of Grants & Contracts

College of Education & Professional Studies

University of Central Oklahoma, 2019

Evening Gowns & Evening Wear in the Oklahoma Fashion Museum Collection at the University of Central Oklahoma

Forward by Mary Huffman

History of the Collection

In the late 1950s, several prominent Oklahoma City women in fashion-related businesses initiated contacts with The Fashion Group International, Inc. headquartered in New York. As a result, a new regional “Fashion Group, Inc. of Oklahoma City (OKC Fashion Group)” was established in the fall of 1958.

One of the goals of the OKC Fashion Group was to collect garments in order to establish a “designer costume collection” covering several decades and representing significant changes in fashion design. They collected garments and accessories from prominent women in Oklahoma. The collection was to be used by fashion marketing, costume design, drama, art, and history students. The items in the collection range from the late 1800s to the 1970s.

The group began collecting designer garments in 1984. In 1985 Lillian Russell began cataloging each item in a ledger. The ledger was hand written, and each clothing item had a hand written tag on it with some basic information. (A copy of the original acquisition tag is included on the following pages.)

In 1989, the OKC Fashion Group disbanded and donated the entire collection to Central State University, which is now called the University of Central Oklahoma (UCO). Even though the group disbanded, the ledger was maintained through July of 1994. The collection consists of over 800 items of clothing, 300+ hats, 151 pairs of shoes, 12 pairs of boots, 50+ purses, some jewelry and gloves.

The collection was kept in storage for many years and used occasionally for class instruction in the fashion marketing program. In 2014, I began the task of inventorying the collection, documenting details of each item and photographing some of the items and details. Most of the photos in this catalog were taken by fashion photography students.

It is now 2019 and everything has been photographed, documented and inventoried. It is my sincere hope that others will find this information helpful. Whether you’re interested in fashion design, fashion history, women’s history, the history of Oklahoma City, or are researching the people in the societal world, there is something in this catalog for many to use.

Catalog Arrangement

This catalog contains a variety of long women’s clothes which were worn in the evening. This includes gowns, coats, ensembles, pants suits, and “at home” wear. The pages are arranged by decade, and then numerically by the acquisition numbers. Quite often people ask what clothes we have from a particular designer. In this catalog I’ve included a designer index with the designer name, the page the dress is located on, as well as the decade.

Another question I'm often asked is who donated the clothes. Thanks to Lillian Russell, who originally collected the garments and logged each item in the collection with the donor names, we have a list of the donors and the date they donated the items. Over the years I've researched the donor names to find out more about their lives and the social circles they were involved with. Included in this book is a list of the women who donated their clothes as well as their husband's name (if known) and a brief description. It's kind of a "Who's Who" in Oklahoma City during this time period.

It's interesting to look back in time and not only see the items the women wore in the evening after the "cocktail hour", but also to learn more about them as a person. Many of the women were in the fashion business in some capacity, and many of the husbands were in the oil & gas industries, banking, law firms, fashion, and many other professions.

The studio photographs were taken in the photography studio in the Mass Communications Building on the UCO campus under the direction of Mr. Jesse Miller, a professor of fashion photography. The student photographers were Kelsey Smith and Zach Hunter. These students were hired through a U.S. Department of Education grant called "Student Transformative Learning Record" (STLR) for this project. Some of the photos I took before the photography studio was available.

I oversaw the entire project and created this catalog. The only editing done to the photos was cropping some of the original photos in Photoshop. The following pages were created using Microsoft Publisher.

Mary Huffman
Coordinator of Grants & Contracts
College of Education & Professional Studies
University of Central Oklahoma
Edmond, Oklahoma

August 2019

Table of Contents

Preface

1920s	Page
Black lace evening gown.....	2
Black velvet evening gown.....	3
Beaded evening gown by Edward Molyneux.....	4
Black satin long evening coat.....	5
Black velvet evening coat with attached cape.....	6
1930s	Page
Red velvet evening gown.....	8
Black taffeta evening gown with jacket.....	9
Black taffeta evening coat.....	10
Red lace and satin evening ensemble.....	11
Black velvet evening coat with white ermine fur.....	12
Lime green velvet forma.....	13
Black velvet evening gown with ermine tails.....	14
Black evening dress from Julius Garfinkel & Co.....	15
Beige floral print long dress.....	16
Ecru Battenburg lace evening court gown.....	17
Dark red velvet full length evening gown.....	18
Black net evening dress.....	19
Mauve silk evening dress with original lace.....	20
Black silk crepe long evening dress.....	21
Rust crepe & ecru lace full length evening gown.....	22
Black organdy evening dress with beige flowers.....	23
Black satin evening gown, Eisenberg & Sons original.....	24
1940s	Page
Hattie Carnegie red satin dress.....	26
Black satin 2 piece full length evening ensemble.....	27
Pink & red formal halter dress by de Michel Originals.....	28
Nettie Rosenstein navy blue crepe evening gown.....	29
Black lace & net evening gown.....	30
Orange slipper satin evening gown.....	31
Black evening gown original by Miss America.....	32
Harvey Berin evening formal, designed by Karen Stark.....	33
Bess Schlauk long evening skirt & flowered blouse ensemble.....	34
Long gold silk evening dress.....	35
Long beige wool robe with embroidered flower designs.....	36

1950s	Page
Ceil Chapman turquoise satin evening dress.....	38
Gold brocade evening redingote with pants by Peer.....	39
Long Egyptian style Thai silk evening dress.....	40
Green brocade evening dress with jacket by Sophie of Saks 5 th Ave.....	41
Grey & taupe chiffon strapless evening dress.....	42
Pink strapless net & taffeta evening formal with jacket.....	43
Lime green crepe full length shirtwaist dress.....	44
Jacques Fath red evening gown, designs by Joseph Halpert.....	45
Long navy crepe evening dress, an original by Rudolf.....	46

1960s	Page
Grey wool evening jumpsuit.....	47
Black & white evening dress, Paganne Ltd. By Gene Berk.....	48
Long pink silk evening dress by Tee-ca, New York.....	49
White chiffon evening gown by Ceil Chapman.....	50
Malcolm Starr pink evening gown & coat.....	51
Travilla turquoise & gold strapless evening gown.....	52
Geoffrey Beene long navy blue & red evening dress.....	53
Black evening ensemble by John MacDougall.....	54
Charles Cooper brown silk full length evening ensemble.....	55
Orange & black chiffon print full length evening dress.....	56
Orange & gold brocade evening pants dress.....	57
Beige & gold evening coat or dress.....	58
Neal McClintock full length yellow evening gown.....	59
Long multi-colored cocktail pajamas.....	60
Eres Couture evening pants suit.....	61
Harvey Berin white and evening gown.....	62
White silk & silver sequined evening dress with jacket.....	63
Long white medallion dress.....	64
Black wool jersey full length evening dress with boa.....	65
Pink & brown evening gown by Herbert Latimer for Irene.....	66
Pauline Trigere black & gold evening ensemble.....	67
Arnold Scassi pink flowered evening gown.....	68
Arnold Scassi full length red evening gown.....	69
James Galanos silver lace over blue lame' evening dress.....	70
White organdy evening gown with appliqued flowers by Rebecca.....	71
Black organdy evening dress with embroidery panel.....	72
Pauline Trigere gold evening ensemble.....	73
Ares evening pants with sleeveless coat.....	74
Black lace evening coat or peignoir.....	75
White satin & gold brocade evening gown.....	76
Harvey Berin full length multi-colored evening dress.....	77
Countess Alexander green & white brocade evening dress.....	78
Blue satin & lace evening gown by Rosalie Macrini.....	79
Long grey evening gown by Victoria Royal, Ltd.....	80

1960s (con't)	Page
Mr. Blackwell black crepe & lace evening gown.....	81
Jobere pink crepe evening gown with beaded top.....	82
Robert Rosenfeld original black evening caftan.....	83
Hot pink evening dress by Mardi Gras.....	84
Young America black crepe evening dress by Oleg Cassini.....	85
Norman Norell yellow flowered 2 piece evening gown.....	86
Evening pants ensemble by Liz Berg for Bernie Bee.....	87
Norman Norell cream wool evening dress.....	88
Green chiffon evening gown by Roger Milot for Fred Perlberg.....	89
White cotton & lace evening dress.....	90
Red lips sequined evening gown & coat ensemble.....	91
Pink brocade evening gown with jacket by Martha.....	92

1970s	Page
Oscar de la Renta long red evening dress.....	94
Ronald Amey black & white cotton evening dress.....	95
Ronald Amey black evening dress with border print.....	96
Zanda Rhodes silk chiffon evening ensemble.....	97
Norman Norell black evening dress with jacket.....	98
Long black velvet evening coat with white fur.....	99
Estevez long brown polyester evening gown.....	100
Pattulo-Jo Copeland black & pink evening dress.....	101
Gold lame' evening gown.....	102
Oscar de la Renta navy blue polka dot dress.....	103
Oscar de la Renta red silk evening dress.....	104
Ric McClintock orange & green evening gown.....	105
Geoffrey Beene black evening dress with a white bow design.....	106
Halston white silk halter evening dress with red tulips.....	107
Halston IV brown polyester evening dress.....	108
Black evening gown by Rudi Gernreich.....	119
White polyester evening gown.....	110
Brown sequined evening jumpsuit by Jill Richards.....	111
Turquoise & multi-colored chiffon evening dress by Helen Rose.....	112
Jill Richards black jersey halter dress.....	113
ZiZi International gold cocktail ensemble.....	114
Helen Barbieri original pink evening gown & coat.....	115
Oscar de la Renta long black velvet skirt.....	116
Harold Levine brown sequined evening pants suit.....	117
Oscar de la Renta black & orange 3 piece ensemble.....	118
Gold, red & beige evening dress.....	119
Bill Blass black & orange halter dress with shawl.....	120
Pauline Trigere 2 piece red silk formal.....	121
Oscar de la Renta blue evening gown with pink flowers.....	122
Adolfo gold blouse & black velvet skirt ensemble.....	123
Geoffrey Beene gold evening ensemble.....	124

1970s (con't)

Oscar de la Renta white lace evening ensemble.....	125
Mollie Parnis black & silver evening gown.....	126
Brown & white polyester evening jumpsuit.....	127
Bill Blass purple silk jersey evening gown with fur.....	128
Donald Brooks beige & cream evening dress.....	129
Donald Brooks polyester evening pants lounge.....	130
Pink & green chiffon evening lingerie.....	131
Mollie Parnis emerald green evening redingote.....	132
Tissu Staron Paris green evening gown.....	133
Chester Weinberg black satin evening pants suit ensemble.....	134
Long black skirt & white blouse evening ensemble.....	135
Norman Norell black evening dress with jacket.....	136
Black evening dress by Norell for I. Magnin & Co.....	137
Bianchi white silk evening gown.....	138
Black velvet evening gown.....	139
Shirley Bellmon pink & white evening gown & coat.....	140
Red evening gown by Rizkallah for Malcolm Star.....	141
Mary Mdfadden green & yellow evening ensemble.....	142
Black silk lounge wear with multi-colored designs by Martha.....	143
Oscar de la Renta blue & white full length dress.....	144

1980s**Page**

Tally Boutique black taffeta & lace evening pants ensemble.....	146
Halston IV white polyester evening dress.....	147

List of Designers**List of Donors**

1920s

Long Evening Wear

Oklahoma Fashion Museum Collection

1920s Full Length Black Lace Evening Gown with Taffeta Slip

Category: Evening Gown

Acquisition #35.85.7.B

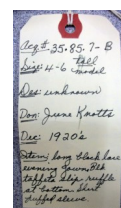
Condition: Excellent

Estimated size: 4-6

Designer: Unknown

Donor: June Buckner Knotts (wife of Max L. Knotts), Nov. 10, 1985

Description: A long black lace gown with a black taffeta **slip**. The slip has a V neck in front, a low back, and spaghetti straps. The black lace **dress** has short puffed sleeves, with a keyhole opening in front and a ruffled collar which fastens in front. The dress has a side opening with snaps.



Oklahoma Fashion Museum Collection

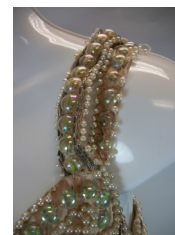
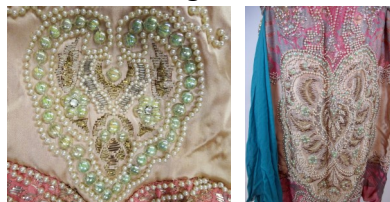
1920s Beaded Evening Gown by Edward Molyneux

Category: Evening Gown Acquisition #127.88.3.A
Condition: Poor/Fragile Estimated Size: 8
Designer: Edward Molyneux Owned by: Onez Norman Rooney
Owned by: Onez Norman Gloyd Rooney (wife of William Aloysius "Pat" Rooney), May 13, 1988
Description: Pink, beige, and aqua satin long gown with heavily designed pearl and bead trim. Aqua chiffon panel on one side with rows of pearls hanging vertically. Gown is sleeveless with 2 beaded straps on the shoulders. Aqua triangle panel in front and back. The dress is lined, but the lining is extremely fragile. The dress was donated by her daughter, Mary Morey.

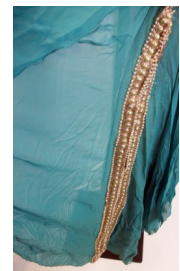


Acq. # 127.88.3.A
Size: 8
Des: Molyneux
Don: Mary Morey
owner Onez Rooney-D
Des: 20's
Stem: Pink satin
long gown w/
pearl & bead trim
Aqua Chiffon
panel on side

Beading Details



Shoulder Strap



Aqua Side Panel

Oklahoma Fashion Museum Collection

1920s Black Satin Long Evening Coat

Category: Evening Coat

Acquisition #(s): 190.93.11.H

Condition: Good

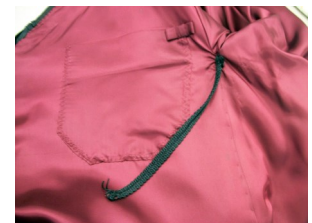
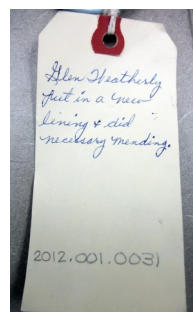
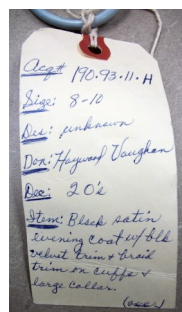
Estimated size: 8-10

Donor: Mr. Haywood Vaughan (Ardmore, Okla.), July 17, 1993

Description: Black satin evening coat with black velvet trim and braid trim on cuffs and large collar. It's longer in back, has long sleeves and a large collar covering the shoulder. The coat closes on the left side with 2 ties, and on the right outside with 3 black velvet buttons and braided loops. There are buttons on each sleeve and down the sides. The lining has been replaced and is a burgundy wine colored satin. There is an inside pocket on the right front.



Back detail



Lining

Oklahoma Fashion Museum Collection

1920s Long Black Velvet Evening Coat with Attached Cape

Category: Evening Coat

Acquisition# 201.16.8

Condition: Poor

Estimated size: 10-12

Designer: Unknown

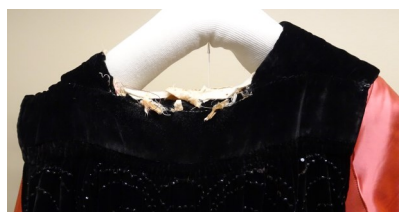
Store tag: Bonwit & Teller Co., Fifth Ave., New York

Donated by: Unknown

Description: A black velvet full length evening coat with beading in swirling patterns on the outside, 3/4 sleeves in pink satin with black velvet cuffs. A short cape is attached which has beaded designs on 2 ends. It has a light pink satin lining with an inside pocket. The lining is in shreds but still attached.



Beading on outside



Damage on neckline



Inside pocket



Beading on cuff

1930s

Long Evening Wear

Oklahoma Fashion Museum Collection

1920s Full Length Red Velvet Evening Gown

Category: Evening Gown

Acquisition #(s): 35.85.7.A

Condition: Fair, Display only

Estimated size: 6

Donor: June Knotts (wife of Max L. Knotts), Nov. 10, 1985

Description: A wine colored velvet evening gown with a diamond waistband in which the bust is gathered. A sewn tie is located in the center front neckline with the ends of the tie acting as shoulder covers that proceed down the back in a 'V' to a large elaborate bow. The bow and shoulder covers are backed with rose colored silk. The dress has one side zipper. The back hemline is shorter than the front hemline. Several seams in the diamond waistband are coming apart. According to the tag, "this belonged to a model in New York." and it was given to the donor. *Dimensions: Waist-26", Length from front center-57", Shoulder covers -7", Bow-18x12", Length from back center-44"*



Acq# 35-85-7-A
Size 6 tall model
Dec unknown
Don: June Knotts
Dec 1920s
Stems wine velvet
Evening gown
Long shirley-like
tail in back

Description:
This belonged to
a model in NY.
Several garments were
given to June Knotts
things from the
30s were dating
but rather plain
many times
2012.001.0015

Oklahoma Fashion Museum Collection

1930s Full Length Black Taffeta Evening Gown with Jacket

Category: Evening Gown and jacket

Acquisition #35.85.7.C

Condition: Good

Estimated size: 6

Designer: Unknown

Store Tag: None

Donated by: June Knotts (wife of Max L. Knotts), Nov. 10, 1985

Description: A black taffeta evening gown with a short matching jacket. The **dress** is sleeveless, has black velvet shoulder straps, a V neck and a low back. The back opening has 11 covered round buttons with loops and a snap. The skirt is longer and fuller in the back. The **jacket** has short sleeves, a collar, a 1 button closing in front and a fitted waist. Flaws: the skirt needs re-hemming and there is a tear beneath the dress buttons.



Dress with jacket



Reg #35.85.7-C
Size 6 tall made
By unknown
Don: June Knotts
Date: 1930s
Item: Black taffeta
evening gown w/
matching jacket
11 covered buttons - also
plastic button jacket

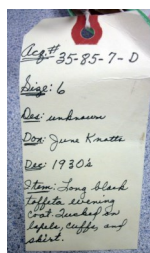


Oklahoma Fashion Museum Collection

1930s Long Black Taffeta Evening Coat

Category: Evening Coat Acquisition #35.85.7.D
Condition: Excellent Estimated size: 6
Designer: Unknown Store Tag: None
Donor: June Knotts, (wife of Max L. Knotts), Nov. 10, 1985

Description: A long black taffeta evening coat with long sleeves and a large collar. The sleeves have a squared out shoulder then puffs out and narrows at the cuff, which has vertical tucks. The collar is high in the back with wide lapels in the front that have tucks. The waist is fitted, and the skirt sides have horizontal fabric tucking. The coat closes with a loop and button, but the button is missing.



Oklahoma Fashion Museum Collection

Early 1930s Red Lace and Satin Evening Gown

Category: Evening Gown

Acquisition #40.85.3.C

Condition: Poor—Fragile

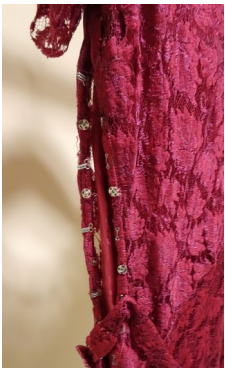
Estimated size: 4

Designer: Unknown

Store Tag: None

Donated by: Nellie Florence Randle, Nov. 18, 1985 (wife of Rivers McFerrin Randle)

Description: A typical evening gown from this time period in wine lace, a matching lace jacket, and a taffeta slip. The slip is in very poor condition. This gown is stored in an acid free wardrobe box.



Side opening detail



Slip damage and tears

Oklahoma Fashion Museum Collection

1930s Black Velvet Evening Coat with White Ermine Fur

Category: Evening Coat

Acquisition #50.86.22.E

Condition: Excellent

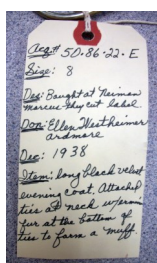
Estimated size: 8

Designer: Unknown

Store Tag: Neiman Marcus, Dallas

Donor: Ellen Westheimer (wife of Jerry Max Westheimer, Ardmore, OK), Jan. 15, 1986

Description: A full length black velvet coat with attached ties at the neck and white ermine fur on the bottom of the ties, which form a muff. The coat closes with 2 large covered buttons and loops, and has gold lining. The estimated date is 1938.



Oklahoma Fashion Museum Collection

1930s Full Length Lime Green Velvet Formal

Category: Long Dress

Acquisition #107.87.13

Condition: Very Good

Estimated size: 12

Designer: Unknown

Store Tag: None

Donated by: Central State University (UCO), July 22, 1989

Description: A full length, lime green velvet formal. It is unlined and has short puffed pleated sleeves and a dropped waist. The neck is round and has a wide yoke in the front and black. Cording is around the neckline and at the dropped waist. The skirt is pleated below the cording. This dress was probably home made.



Oklahoma Fashion Museum Collection

1930s Full Length Black Velvet Evening Gown with Ermine Tails

Category: Evening Gown

Acquisition #135.88.3.A

Condition: Fragile

Estimated size: 8-10

Designer: Unknown

Store Tag: None

Donor: Helen Cabell, June 20, 1988

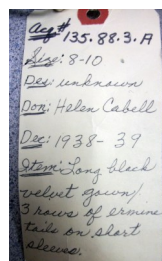
Description: A long black velvet gown with a sweetheart neckline, short sleeves with 3 rows of ermine tails attached to the sleeves, and a side zipper opening. Several of the ermine tails have fallen off and are in an envelope. Estimated date range: 1938-39. The designer was a member of the "Fashion Originator's Guild" but the tag is too damaged to read. This dress is stored in an archival wardrobe box.



Dress front



Dress back



Oklahoma Fashion Museum Collection

1930s Long Black Evening Dress from Julius Garfinckel & Co.

Category: Evening Dress

Acquisition #135.88.3.B

Condition: Fair

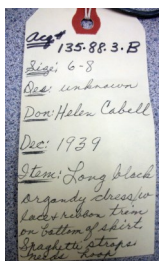
Estimated size: 6-8

Designer: Unknown

Purchased at: Julius Garfinckel & Co.

Donor: Helen Cabell, June 20, 1988

Description: Long black organdy dress with white lace and black ribbon trim on bottom of skirt. Double spaghetti straps in black velvet. Sweetheart neckline. Bodice gathers under the bust and an empire waistband. Dress has a black taffeta lining. Condition: The straps have become unsewn and need re-



Lace trim detail on skirt

Oklahoma Fashion Museum Collection

1930s Beige Floral Print Long Dress

Category: Long Dress

Acquisition #135.88.3.C

Condition: Poor, Display only

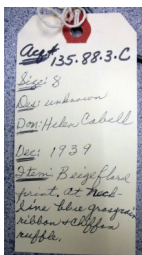
Estimated size: 6-8

Designer: Unknown

Estimated date: 1939

Donor: Helen Cabell, June 20, 1988

Description: A sleeveless floor length dress in a beige floral print. The neckline has a chiffon ruffle in front and back with blue grosgrain ribbon interwoven on the edges, and the dress has a side zipper. The dress has a white petticoat with an unfinished hem. Although is dress is in relatively good condition, it does have perspiration stains, and is somewhat fragile to handle. Recommend for display use only.



Fabric detail

Oklahoma Fashion Museum Collection

1930s Ecrú Battenberg Lace Evening Court Gown

Category: Evening/Court Gown

Acquisition #146.88.1

Condition: Fragile

Estimated size: 12

Designer: Unknown

Store Tag: none

Donated by: Mrs. C.K. Redd (Albuquerque, NM), Oct. 10, 1988

Description: A full length ecru Battenberg lace court gown with a peach taffeta slip. The gown was bought in London and belonged to the donor's mother, Mrs. Elizabeth C. Sorenson. The gown has short sleeves, a round neck, and a side zipper. Flaws: there are stains on the slip and on the dress, and the lace is fragile. Donated by her daughter, Mrs. C.K. Redd of Albuquerque, NM on Oct. 10, 1988. This dress belonged to the donor's mother, Elizabeth C. Sorenson.



Acq #146.88.1
Size: 12
Des: unknown
Don: Mrs. C.K. Redd
Belongs to her mother
Elizabeth C. Sorenson
Dec. 1930's
Item: Long ecru
Battenberg lace
court gown, peach
taffeta slip,
bought in London.



Oklahoma Fashion Museum Collection

1930s Dark Red Velvet Full Length Evening Gown

Category: Evening Gown

Acquisition #159.89.10.B

Condition: Good

Estimated size: 8

Designer: Unknown

Store Tag: Balliet's Okla. City

Donor: Mr. Haywood Vaughan (Ardmore, Okla.), Oct. 16, 1989

Description: A full length red velvet gown with short puff sleeves, a sweetheart neckline, and 3 velvet bows on the bodice front. The dress has a side zipper, and the skirt is cut on the bias. Flaw: weak stitching



Acq # 159.89.10.B
Size: 8
Des: unknown
Don: Haywood Vaughan
Ardmore
Dec: 30's
Stem: Red velvet
long evening dress
No trim short sleeve
half velvet bows in
front 1/2 belt 1000

skirt cut on
bias as was
frequently done in
the 30's.
2012.001.0045



Bodice Views

Oklahoma Fashion Museum Collection

1930s Long Black Net Evening Dress

Category: Evening Dress Acquisition #159.89.10.F
Condition: Fragile Estimated size: 8
Designer: Unknown Store Tag: none
Donor: Mr. Haywood Vaughan (Ardmore, Okla.), Oct. 16, 1989

Description: A long black net dress with long sleeves and velvet cuffs. The top of the bodice and the sleeves are in sheer net. There are black velvet appliqued flowers on the right side and on the skirt. The dress has a side zipper and has been repaired. There are many holes and tears in the netting.



159.89.10.F
Size: 8
Donor: Mr. Haywood Vaughan
Ardmore, Okla.
Dec: 30/89
Item: Black net long
dress. Velvet cuffs
on long sleeves. Vel
vet flowers
applied on skirt
etc.

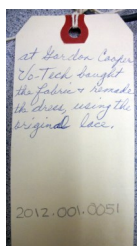
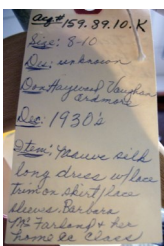


Oklahoma Fashion Museum Collection

1930s Mauve Silk Evening Dress with Original Lace

Category: Evening Dress Acquisition #159.89.10.K
Condition: Good Estimated size: 8-10
Designer: Unknown Store Tag: none
Donated by: Mr. Haywood Vaughan (Ardmore, Okla.), Oct. 16, 1989

Description: This long mauve silk dress was replicated by Barbara McFarland and her Home Ec. Class at Gordon Cooper Vo-Tech in Shawnee, Okla. They bought the fabric and remade the dress using the original lace. It has a sweetheart neckline, lace puff sleeves which are gathered, and lace trim on the bottom of the skirt attached to the horizontal fabric pleating.



Skirt pleating



Lace detail

Oklahoma Fashion Museum Collection

1930s Black Silk Crepe Long Evening Dress

Category: Evening Dress

Acquisition #182.91.4.C

Condition: Good

Estimated size: 2 or 3

Designer: Unknown

Donated by: University of Central Oklahoma

Description: This black silk crepe dress is slightly flared at the bottom and has an attached capelet which covers the shoulders. The capelet has a black satin design on the back, and the dress has a black satin collar. It was left at the University of Central Oklahoma and donated to the collection on July 15, 1991. This is a VERY thin dress.



Back view



Front view

*Expt 182.91.4.C
 Sig: 2 or 3
 Des: unknown
 Don: Univ of Central Okla. someone left this garment at the Univ
 Des: 30s
 Desc: Black silk crepe dress. For a very thin material. Slightly flared at bottom. The short attached capelet of silk satin trim, with collar.*

182.91.4.C

Oklahoma Fashion Museum Collection

1930s Rust Crepe & Ecrú Lace Full Length Evening Gown

Category: Evening Gown

Acquisition #189.93.15.K

Condition: Fragile

Estimated size: 8-10

Designer: Unknown

Store Tag: Al Rosenthal's Inc., Okla. City

Donated by: Frances Logan "Ruth" Frazier (wife of Jay Frazier), July 7, 1993

Description: A two piece evening gown with a rust colored crepe slip and a taupe lace net overdress. The **slip** has spaghetti straps, brown netting on top of the bodice and on the hem, and a side zipper. The **lace overdress** has a V neck, short sleeves, and the look of 3 tiers of lace. Flaws: There are perspiration stains on the slip, and holes in the netting. The dress has tears in the lace at the neckline.



Acq. # 189.93.15.K
Size: 8-10
Des: unknown
Don: Ruth Frazier
Des: 30s
Dtion: Long lace
dress in taupe
over a rust colored
crepe slip.
No trim.



Damaged slip areas



Store tag



Lace damage on shoulder

Oklahoma Fashion Museum Collection

1930s Long Black Organdy Evening Dress with Beige Flowers

Category: Evening Dress Acquisition #189.93.15.O
Condition: Fragile Estimated size: 8
Designer: Unknown Store Tag: None
Donor: Frances Logan "Ruth" Frazier (wife of Jay Frazier), July 7, 1993

Description: A black organdy dress with embroidered beige flower designs covering it. It has a V neck in front and U neck in back. A wide beige linen collar and bow is attached to the front, with a linen strip around the hem. The sleeves are short and square at the top where there is an opening. There is a side zipper, and 25 small round beige buttons go down the front. This dress has been repaired—it had a large hole on the side. Also, a slip was made for it.



Sleeve detail



Button detail



Oklahoma Fashion Museum Collection

Late 1930s Eisenberg & Sons Original Black Satin Evening Gown

Category: Evening Gown

Acquisition #190.93.11.A

Condition: Excellent

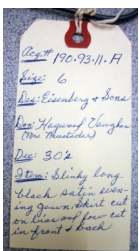
Estimated size: 6

Designer: Eisenberg & Sons Original

Store Tag: None

Donor: Mr. Haywood Vaughan (Ardmore, Okla.), July 17, 1993

Description: A long slinky black satin evening gown. Skirt is cut on the bias and low cut in front and back. It's sleeveless with wide shoulder straps, and opens in the back with 16 covered round buttons and loops.



Back detail



Back opening

1940s

Long Evening Wear

Oklahoma Fashion Museum Collection

1940s Hattie Carnegie Red Satin Dress

Category: Evening Dress

Acquisition #13.85.25.T

Condition: Excellent

Estimated size: 8-10

Designer: Hattie Carnegie

Store tag: none

Owned by: Ellen Evans Burns

Description: A long red satin dress with a full skirt, 3/4 length cap sleeves, V neckline front and back, and a back zipper. It has a matching red satin belt. This dress is a typical party dress after the war. Donated by Libby Burns, daughter of the owner, on May 23, 1985.



*Acq. # 13.85.25-T
 Size 8-10
 Des. Hattie Carnegie
 Own. Ellen Burns
 By Libby Burns, Ponca
 City
 Dec. 1940s
 Item: Red satin
 cocktail dress - cap
 sleeve - V-neckline*

*Description:
 Red satin cocktail
 dress. Full skirt -
 3/4 length - cap sleeve.
 Typical of party
 dresses after war.*



Oklahoma Fashion Museum Collection

1940s Black Satin 2 Piece Full Length Evening Ensemble

Category: Evening Gown

Acquisition #26.85.2.A

Condition: Very Good

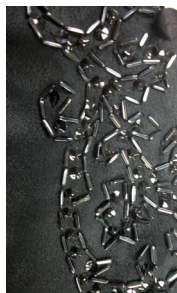
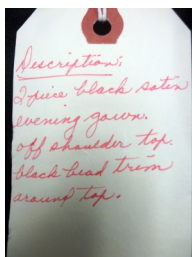
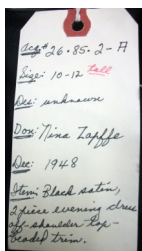
Estimated size: 6-8

Designer: Unknown

Estimated date: 1948

Donated by: Nina Byrom Fessler Zapffe (wife of Fred Zapffe, Norman, Okla.), Oct. 1, 1985

Description: This is a two piece evening dress with an off-shoulder top made of black satin. The skirt has button closures on each side, and the top has a multiple button closure on one side. The top is beaded all around.



Beading detail



Button & loop side opening

Oklahoma Fashion Museum Collection

Late 1940s-early 50s Pink & Red Formal Halter Dress by de Michel Originals of California

Category: Evening Formal

Acquisition #50.86.22.B

Condition: Good

Estimated size: 8

Designer: de Michel Originals of California

Store Tag: none

Donated by: Ellen Westheimer, Ardmore, Okla. (wife of Jerry Westheimer), Jan. 15, 1986

Description: A pink taffeta formal halter dress with a bustle and crinoline petticoat. The halter portion is in red satin and attached to the dress with 5 button & loop closures. It has a lined bodice and a back metal zipper. The back has a red satin bustle with 2 large pink flowers which snaps to the waist. This dress is stored in an acid-free wardrobe box.



Acq. # 50.86.22-B
Size: 8
Des. de Michel of Calif.
Don. Ellen Westheimer
Ardmore
Des. late 40's or early 50's
Stems: Pink taffeta w/
red satin halter +
bustle w/ 2 large
flowers, crinoline
petticoat



Bustle flowers



Flower at bustle



Petticoat

Oklahoma Fashion Museum Collection

1940s Nettie Rosenstein Navy Blue Crepe Evening Gown

Category: Evening Gown

Acquisition #54.86.14.F

Condition: Poor

Estimated size: 10

Designer: Nettie Rosenstein

Store Tag: None

Donated by: Lillian Mary Tiddman Earp (wife of Ancel Earp, Sr.) Jan. 22, 1986

Description: A long navy crepe evening gown with a navy lace bodice insets over nude lining. It's sleeveless with a V neck in front and back. It needs full repairs.



Bodice detail inside



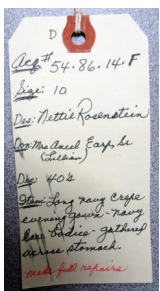
Front view



Front detail



Neckline detail



Oklahoma Fashion Museum Collection

1940s Long Black Lace & Net Evening Gown

Category: Evening Gown

Acquisition #58.86.24.W

Condition: Excellent

Estimated size: 6

Designer: Unknown

Store Tag: None

Owned by: Hazel "Carrol" McLemore Loving (wife of William Albert Loving), Feb. 6, 1986.

Description: A long black evening gown in lace and net. It has a sweetheart neckline, spaghetti straps, a side zipper, a black taffeta lining and is sleeveless. The skirt has 4 tiers: 2 are black lace and 2 are in black net. This dress belonged the donor's daughter who wore it to a party. Donated by her daughter, Pat Schweinsberg.



Oklahoma Fashion Museum Collection

Late 1940s Orange Slipper Satin Evening Gown

Category: Evening Gown

Acquisition #58.86.24.X

Condition: Good

Estimated size: 8-10

Designer: Unknown

Store Tag:

Owned by: Hazel "Carrol" McLemore Loving (wife of William Albert Loving), Feb. 6, 1986.

Description: A pumpkin colored slipper satin long evening gown. Full skirt in tiers with 4 double rows of cording as trim. It has a V neck, cap sleeves with tucks on the shoulders. The skirt is gathered at the waist and has a side zipper, and there's a hook and eye in the left sleeve. The bodice is lined and there's a tear in the lining, also on of the bodice side seams needs re-stitching. Donated by her daughter, Pat Schweinsbert on Feb. 6, 1986.



D
Acq# 58.86.24.X
Size: 8-10
Des: unknown
Des: Carrol Loving
Date: 50s
Item: Pumpkin colored
slipper satin evening
gown (long) Full
skirt in tiers with
cording as trim.



Bodice front



Skirt detail

Oklahoma Fashion Museum Collection

1940s Long Black Evening Gown Original by Miss America

Category: Evening Gown

Acquisition #83.86.8.B

Condition: Fair

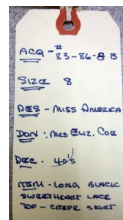
Estimated size: 6-8

Designer: Original by Miss America

Store Tag: none

Donor: Elizabeth M. Coe (wife of Charles R. "Bucket" Coe), November 15, 1986

Description: A long black evening gown with short sleeves and a sweetheart neckline. The bodice of the gown is black lace with flower designs and black sequins with a flesh colored lining. The dress has a side zipper. An inside tag reads: New York Creation, N.Y. Dress Institute, made under standards of I.L.G.W.U. The dress has some lace damage.



Oklahoma Fashion Museum Collection

1940s Harvey Berin Evening Formal, designed by Karen Stark

Category: Dress, Formal

Acquisition #83.86.8.D

Condition: Excellent

Estimated size: 8

Designer: Harvey Bevin designed by Karen Stark

Donated by: Elizabeth M. Coe (wife of Charles R. "Bucket:" Coe), November 15, 1986

Description: A strapless evening formal with grey lace over pink with pink appliqued flowers attached to the full skirt and a boned bodice. It has a net petticoat attached inside at the waist with a hook and eye closure, and the skirt has a back metal zipper.



Net petticoat



Skirt detail

Oklahoma Fashion Museum Collection

1940s Bess Schlauk Long Evening Skirt & Flowered Blouse Ensemble

Category: Evening Gown

Acquisition #127.88.3.C

Condition: Excellent

Estimated size: 8-10

Designer: Bess Schlauk, Beverly Hills

Store tag:

Owned by: Onez Norman Gloyd Rooney (wife of William Aloysius "Pat" Rooney)

Description: A two piece long evening gown. The long black crepe **skirt** has an attached nude top with spaghetti strips, a side zipper, and an underskirt with embroidered flowers behind the front skirt slit. The **blouse** has short sleeves, shoulder pads, hook & eye closures on the bodice front and is black chiffon covered with applied floral braid. It has a matching purse as shown below. Donated by her daughter, Mary Morey on May 13, 1988.

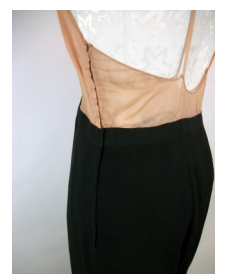


Acq# 127.88.3.C
 Size 8-10
 Des: Bess Schlauk
 Beverly Hills
 Don: Mary Morey
 (w/Onez Norman Gloyd Rooney-D)
 Date: 5/88
 Notes: 2pc long
 evening gown &
 blk. chiffon top
 w/ floral braid
 appl. on bodice

A beaded purse
 was made to go
 with the dress.
 Made of the same
 fabric



Matching Purse #P202.16.54



Oklahoma Fashion Museum Collection

1940s Long Gold Silk Evening Dress

Category: Evening Dress

Acquisition #161.89.3.B

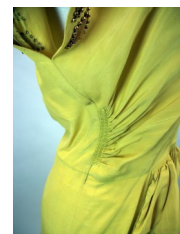
Condition: Fair

Estimated size: 10

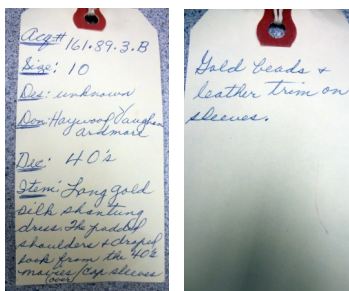
Designer: Unknown

Donated by: Mr. Haywood Vaughan (Ardmore, Okla.), November 12, 1989

Description: A long gold silk shantung dress with padded shoulders and a draped look from the 40s movies. The dress has a V neck, a side zipper, and cap sleeves with triangles of leather for decoration surrounded by gold beads. The front is gathered and draped in front, and the sides of the bodice are gathered. The belt is missing. Also, some of the triangular leather pieces are missing or loose.



Side gathering



Sleeve decoration

Oklahoma Fashion Museum Collection

1940s Long Beige Wool Robe with Embroidered Flower Designs

Category: Evening Robe

Acquisition #197.94.3.C

Condition: Very Good

Estimated size: Medium

Designer: Unknown

Store Tag: None

Donated by: Nila Lee Stevenson (wife of Col. Ralph Stevenson, Sr.), November 5, 1994

Description: A long beige wool robe with hand embroidered designs in blue, green, purple and turquoise flower designs. The robe has a collar, a waist stay, and a front closure with 13 embroidered and covered buttons and loops. The front of the robe, the end of the sleeves, and the hem have turquoise embroidered designs. Estimated date: 1945. The wool has a few moth holes.



Embroidery detail



Buttons down front



Front open to waist showing waist stay

1950s

Long Evening Wear

Oklahoma Fashion Museum Collection

1950s Ceil Chapman Turquoise Satin Evening Dress

Category: Dress, Evening
 Condition: Very Good
 Designer: Ceil Chapman
 Donated by: Ellen Louise Woods Westheimer, Ardmore, Okla. (wife of Jerry Westheimer), Jan. 15, 1986

Acquisition #50.86.22.A
 Estimated size: 8
 Store Tag: Vandevors, Tulsa, OK

Description: A sleeveless turquoise satin evening dress. The full skirt is gathered in front below the knee and has a pleated net petticoat which hooks in the back. The dress has a scoop neck, boned, bodice, and a metal back zipper. There is some perspiration damage.



Acq. # 50.86.22-A
Size 8
Des: Ceil Chapman
Don: Ellen Westheimer
Ardmore
Des: 1950's
Item: Turq. satin
evening dress, short
full skirt gathered
in front. No sleeve
no trim.



Net Petticoat



Perspiration damage

Oklahoma Fashion Museum Collection

1950s Gold Brocade Evening Redingote with Pants by Peer

Category: Evening Coat and Pants

Acquisition #58.86.24.0

Condition: Very Good

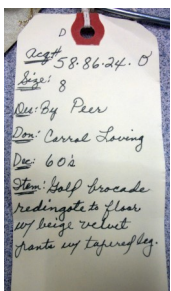
Estimated size: 8

Designer: Peer

Store Tag: None

Owned by: Hazel "Carrol" McLemore Loving (wife of William Albert Loving)

Description: A gold brocade full length evening redingote with leaf designs, a round collar, and 3/4 length dolman sleeves. It has a front opening with 5 covered buttons and a snap at the waist and a matching tie belt. The bodice is lined. Beige velvet pants with tapered legs are part of this ensemble. The coat has a few neck stains and slight fabric stains. Donated by the owner's daughter, Pat Schweinsberg, Feb. 6, 1986.



Oklahoma Fashion Museum Collection

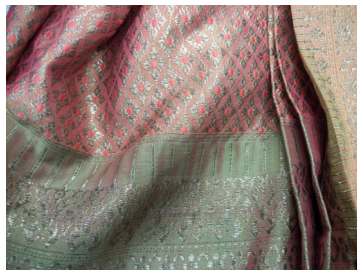
1950-60s Long Egyptian Style Thai Silk Evening Dress

Category: Evening Dress Acquisition #73.86.22.M
Condition: Very Good Estimated Size: 8
Designer: Custom made Store Tag: none
Donated by: Ann Linn, July 4, 1986

Description: A custom made evening dress in Thai silk with one bare shoulder. The fabric is heavy and has gold triangles and red dots on an orange background. The bottom of the skirt has green and red horizontal bands. The waist has a gold cummer bun with a folded fabric sash in front. The dress has a back zipper and gold lining. The style is suggestive of Egyptian dress.



Acq # 73.86.22.M
Size: 8
Des: Custom made
Don: Ann Linn
Date: No date
Item: Gold and Claret
evening dress One
shoulder. Looks like
Egyptian fabric.
Half cummerbund



Fabric detail

Oklahoma Fashion Museum Collection

1950s Evening Dress with Jacket by Sophie of Saks 5th Ave.

Category: Evening Dress with Jacket

Acquisition #77.86.20.A

Condition: Very Good

Estimated size: 8-10

Designer: Sophie of Saks 5th Avenue

Store Tag: None

Donated and owned by: Virginia Dulaney (wife of Luther T. Dulaney), July 28, 1986

Description: This evening ensemble was worn to many events by the donor. The dress and short jacket are made out of a lime green and gold brocade material. The sleeveless **dress** is floor length with a round neck and scoop in back, has a **matching belt** which goes inside the gown and through 2 front slips, and has an overlapping side panel on the left. The **jacket** has 3/4 sleeves, a brown mink collar, and 2 covered buttons on front. The seam is damaged on the side panel.



Virginia Dulaney's 1950s
Beaux Arts Gown worn
to many number of other
events
Thanks
Kilbin Lussey
Fashion House



Seam damage

D
Acq: 77.86.20.A
Size: 8-10
Des: Sophie
Don: Mrs. Luther Dulaney
By Tom & Sylvia Dulaney
Des: 506
Notes: 2 pc lime green
& gold metallic fabric
evening dress &
jacket w/ mink
collar-crown

Oklahoma Fashion Museum Collection

1950s Grey & Taupe Chiffon Strapless Evening Dress

Category: Evening Dress

Acquisition #106.87.1

Condition: Fair

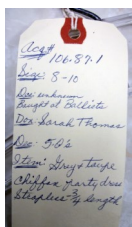
Estimated size: 8-10

Designer: Unknown

Store Tag: Balliet's, Inc., Oklahoma City

Donated by: Sarah Thomas, July 10, 1987

Description: A strapless grey and taupe chiffon 3/4 length party dress. The 2 colors of chiffon cross over the bodice, and the taupe drapes down one side. The dress has a side zipper, boning in the bodice, a waist stay, and belt loops for a belt. Some of the fabric has holes, and there is some perspiration damage.



Store Tag



Damaged fabric areas

Oklahoma Fashion Museum Collection

1950s Pink Strapless Net & Taffeta Evening Formal with Jacket

Category: Evening Dress

Acquisition #107.87.17

Condition: Very good

Estimated size: 10

Designer: Copy of Howard Greer

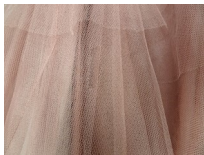
Store Tag: None

Donated by: Central State University (UCO), July 22, 1989

Description: This strapless, full length formal is in an iridescent mauve taffeta with layered netting on the skirt. The short matching taffeta jacket is unlined and has short sleeves. The bodice of the dress has a sweetheart neckline with pleated netting at the bust line, boning, and a pleated taffeta cummer bun. The skirt has 7 tiers of netting. The dress is in good condition but there is some net damage on the skirt and some fabric discoloration on the underarms. It has a warning label at the hem "flammable material do not expose to open flame."



Net damage



Acc # 107-87-17
Size: 10
Des: Copy of HOWARD GREER
Don: C. S. U.
Des: 50's
Dist: MAUVE NET
w/ IRIDESCENT
TAFFETA BODICE
w/ JACKET

Bodice boning



Oklahoma Fashion Museum Collection

1950s Lime Green Crepe Full Length Shirtwaist Dress

Category: Shirtwaist Dress

Acquisition #107.87.19

Condition: Good

Estimated Size: 10

Designer: Unknown

Store Tag: None

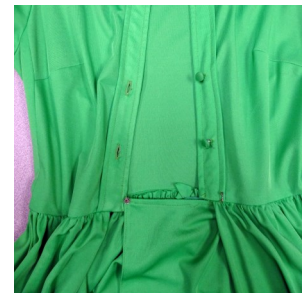
Donated by: Central State University (UCO), July 22, 1989

Description: A long, lime green crepe shirtwaist dress with long sleeves, cuffs with 2 covered buttons, a pointed collar, and a gathered skirt. It has a front opening with 2 covered green buttons on the bodice, and a snap and hook and eye on the skirt front closure. The dress is unlined and has belt loops on the sides (no belt).



Inside tags

ACQ # 107-87-19
SIZE 10
DES 2
DON C.S.U.
DEC 50s
ITEM LONG CREPE
L.S. SHIRT DRESS
LIME GREEN



Front opening

Oklahoma Fashion Museum Collection

1950s Jacques Fath Red Evening Gown designs by Joseph Halpert

Category: Evening Gown

Acquisition #111.87.13.L

Condition: Very Good

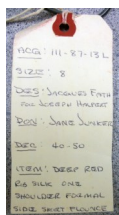
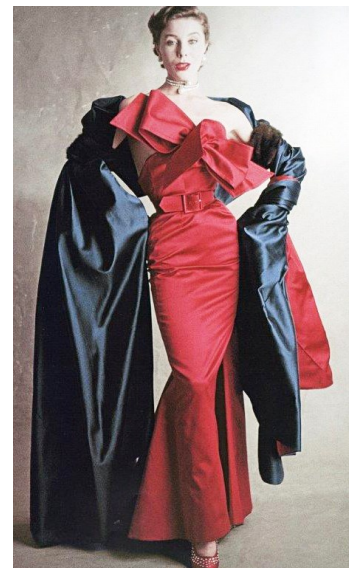
Estimated size: 8

Designer: Jacques Fath designs for Joseph Halpert

Store Tag: none

Donor: Jane Asher Junker (wife of Curtis W.V. Junker), September 5, 1987

Description: A long, deep red rib silk/satin evening gown or formal. The dress has a boned bodice and a waist stay. One shoulder is bare, and the other shoulder is sleeveless with a big red bow. The dress has a matching wide belt, a zipper side opening and 6 covered buttons on the side with a side flounce. The skirt needs hemming, and one of the seams is weak.



Inside bodice

Original dress on model Dovina

1960s

Long Evening Wear

Oklahoma Fashion Museum Collection

1960s Grey Wool Evening Jumpsuit

Category: Evening Jumpsuit

Acquisition #1.85.10.E

Condition: Excellent

Estimated Size: 12

Designer: Unknown

Donated by: Mary L. Bohnard, April 7, 1985

Description: A grey wool jumpsuit with long sleeves, designed for evening wear about 1960. A copy of a French original. It has a round neck, back zipper, and silver studs on the shoulders, around the waist, and down the sides.



Fig. # 1.85.10-E
Size: 12
Rep: Copy of European
Import
Don: Mary L. Bohnard
Date: about 1960
Item: Grey Jumpsuit

Description
Grey wool jumpsuit
Designed for evening
wear about 1960
Copy of French original
approx. 1960.
Silver studs around
waist & down sides.

Oklahoma Fashion Museum Collection

Late 1960s Paganne Ltd. by Gene Berk Black & White Evening Dress

Category: Evening Dress

Acquisition #1.85.10.F

Condition: Excellent

Estimated size: 12

Designer: Paganne Ltd. by Gene Berk

Donated by: Mary L. Bohnard, April 7, 1985

Description: A long black sleeveless evening dress in polyester with a black and white design on the bottom third. Emilia Pucci prints were copied and Paganne of N.Y. designed a collection featuring his prints as shown on this gown. It has a back zipper with a hook and eye, and 2 keyhole openings in front.



Acq. # 1.85.10 - F
Size: 12
Des: Paganne of N.Y.
fabric by Pucci
Don: Mary L. Bohnard
Dte: late 1950's
Item: Black evening gown

Description:
long black evening
dress - fabric by
Pucci. Emilia Pucci
prints were copied
Paganne of N.Y. designed
a collection featuring the
prints on polyester
retail price \$25.
These prints were the
rage in late '50 + early
'60's.



Oklahoma Fashion Museum Collection

1960s Long Pink Silk Evening Dress by Tee-ca, New York

Category: Evening Dress

Acquisition #18.85.10.J

Condition: Good

Estimated Size: 7-9

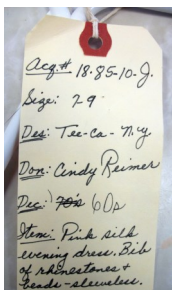
Designer: Tee-ca, New York

Store Tag: None

Donated by: Cindy Reimer, August 1, 1985

Union Tag: ILGWU, AFL-CIO

Description: A sleeveless, full length evening dress in pink silk with a V neck bib and collar of rhinestones, silver and clear beads on netting. It has a back metal zipper with a hook and eye at the top. It has some perspiration stains.



Inside tag



Outside



Inside



Perspiration stains

Oklahoma Fashion Museum Collection

1960s White Chiffon Evening Gown by Ceil Chapman

Category: Evening Gown

Acquisition #19.85.6.D

Condition: Poor, very fragile

Estimated size: 6-8

Designer: Ceil Chapman

Donated by: Mr. Haywood Vaughan (Ardmore, OK),

Description: A 3/4 length sleeveless evening gown with 3 layers of chiffon in the skirt. It has a beaded bodice which is in very poor condition. The back zipper is broken.



Store tag



Designer tag



Acq. # 19-85-6-D
Size: 6-8
Des: Ceil Chapman
Don: Haywood Vaughan
His collection - Ardmore
Rec: 1940s
Item: 3/4 length
evening gown. White
chiffon skirt beaded
bodice.



Beading detail

Oklahoma Fashion Museum Collection

1960s Malcolm Starr Pink Evening Gown and Coat

Category: Evening Gown

Acquisition #20.85.2.A & B

Condition: Very Good

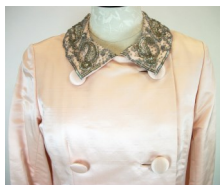
Estimated Size:

Designer: Malcolm Starr

Store Tag: Balliet's Oklahoma City

Donated by: Julia Hildreth (wife of Vern Paul Hildreth), August 10, 1985

Description: A sleeveless gown and matching coat in pink silk moiré. The **gown** has pink lining, an empire waist, a round neck in front and a scoop back, and a back zipper. The top is beaded with silver and clear beads, and has rhinestones. The **Coat** is fully lined, and double breasted with 6 large covered buttons. It has a beaded collar, long sleeves and a back belt with 2 buttons. There are some neckline stains. Original cost: \$900 for both.



Beading detail



Acq# 20-85.2.A
Size: 12, 10
Des: Malcolm Starr
Don: Mrs. Paul Hildreth
Des: ~~1960s~~ early '60s
Item: evening gown
Pink moiré empire
bodice in Crystal
beads. \$900
date

Oklahoma Fashion Museum Collection

1960s Travilla Turquoise & Gold Strapless Evening Gown

Category: Evening Gown

Acquisition #35.85.7.F

Condition: Excellent

Estimated Size: 10-12

Designer: Travilla

Store Tag: Leisure Manor, Tulsa

Donated by: June Buckner Knotts (wife of Max L. Knotts), November 10, 1985

Description: A turquoise and gold brocade strapless evening gown with long turquoise satin streamers from the sides at the waist and to the back behind the gown. The bodice is lined, has bodice stays, and a turquoise folded inset at the midriff section. The brocade fabric on the bodice forms points near the shoulders. The dress has a back zipper.



Acq # 35.85.7-F
Size: 10-12
Des: unknown
Don: June Knotts
Dec: 1960s
Stm: Turq & gold
brocade strapless
evening gown
Turq satin streamer
in back



Oklahoma Fashion Museum Collection

1960s Geoffrey Beene Long Navy Blue and Red Evening Dress

Category: Evening Dress

Acquisition # 49.86.11.C

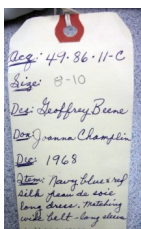
Condition: Excellent

Estimated Size: 8-10

Designer: Geoffrey Beene

Donated by: Joanna Champlin, January 5, 1986

Description: A navy blue and red peau de soie silk long evening dress with long sleeves. The empire bodice is in red with an inside front snap closure and 10 navy buttons attached to the outside with 2 blue strips for decoration. The dress has a round collar in blue, and the sleeves are blue. There are loops for a belt, but the belt is missing.



Front opening

Oklahoma Fashion Museum Collection

1960s Black Evening Ensemble by John MacDougall

Category: Evening Ensemble

Acquisition #56.86.24.K

Condition: Very Good

Estimated size: 6-8

Designer: John MacDougall

Store Tag: Hightower, Okla. City

Owned by: Hazel "Carrol" McLemore Loving (wife of William Albert Loving)

Description: A black evening ensemble with a long dress, pants and a jacket. The halter **dress** has open shoulders, a white pointed collar, and a black satin bow at the neckline. It has a back zipper, is lined with a bottom ruffle that shows, and black satin ribbon down the sides. The **tuxedo jacket** has long sleeves, black satin lapels and 2 front pockets with black satin tabs. It has a one button closing and 3 buttons on the sleeves. This ensemble also includes **black satin pants** with wide legs. Donated by Pat Schweinsberg, Feb. 1, 1986.



Union Tag



Store tag



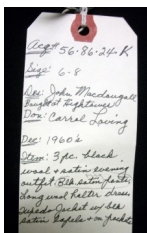
Jacket with Pants



Dress with Jacket



Halter Dress



Oklahoma Fashion Museum Collection

1960s Charles Cooper Brown Silk Full Length Evening Ensemble

Category: Evening Dress

Acquisition #58.86.24.A

Condition: Very Good

Estimated size: 6-8

Designer: Charles Cooper

Store tag:

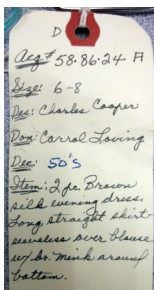
Owned by: Hazel "Carrol" McLemore Loving (wife of William Albert Loving)

Description: A two piece brown silk evening outfit. The long, straight **skirt** is lined and has a side slit and a side zipper. The sleeveless **top** has a draped neckline with a covered diamond shape weight in front, and brown mink around the bottom. The top is pulled on over the head and has some faint perspiration stains.

Donated by Pat Schweinsberg, Feb. 6, 1986.



Front view with, and without the weight



Weight in the bodice front

Oklahoma Fashion Museum Collection

1960s Orange & Black Chiffon Print Full Length Evening Dress

Category: Evening Gown

Acquisition #58.86.24.P

Condition: Good

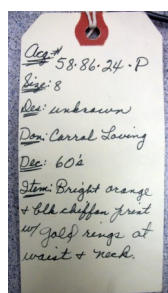
Estimated Size: 8

Designer: Unknown

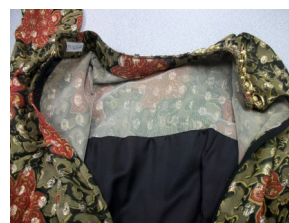
Union tag: ILGWU

Owned by: Hazel "Carrol" McLemore Loving (wife of William Albert Loving)

Description: A long dress with a round neck, long sleeves, and an empire waist. The lame brocade fabric has a black background with orange flower designs and gold dots. The neck of the gown and the waist has gold rings and braid. The dress has a black lining with nude lining on the top, a back zipper, and seam pockets. The zipper needs repair and some of the braid needs re-tacking. Donated by her daughter, Pat Schweinsberg, on Feb. 6, 1986.



Union tag



Inside of bodice

Oklahoma Fashion Museum Collection

1960s Orange and Gold Brocade Evening Pants Dress

Category: Evening Pants Dress

Acquisition #58.86.24.T

Condition: Very Good

Estimated size: 8

Designer: Unknown

Store Tag: None

Owned by: Hazel "Carrol" McLemore Loving (wife of William Albert Loving)

Description: An orange and gold brocade evening jumpsuit with wide pant legs, 3/4 sleeves, a round neck and low square back. It has orange lining, and a matching belt with a gold buckle. There are some perspiration stains, and a small tear in the sleeve lining. Donated by the owner's daughter, at Schweinsberg on Feb. 6, 1986.



Acq # 58.86.24.T
Size: 8
Des: unknown
Don: Carrol Loving
Des: 60s
Item: Orange brocade
jumpsuit w/ gold
design throughout
Low-cut back



Oklahoma Fashion Museum Collection

1960s Beige and Gold Evening Dress or Coat

Category: Evening Dress or Coat

Acquisition #58.86.24.V

Condition: Very Good

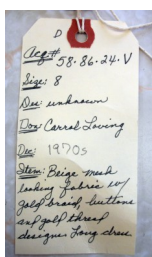
Estimated size: 8

Designer: Unknown

Store Tag: none

Owned by: Hazel "Carrol" McLemore Loving (wife of William Albert Loving)

Description: A long evening dress, or coat, made in a beige mesh looking fabric with gold braid and embroidery. It has a round neck, long sleeves, and a front opening with 40 knobby gold buttons and loops. The gold braid is around the neck, down the front, on the hem, up the slits on each side, and on the bottom of the sleeves. There are some slight stains on the fabric. Donated by the owner's daughter, Pat Schweinsberg, Feb. 6, 1986.



Oklahoma Fashion Museum Collection

1960s Neal McClintock Full Length Yellow Evening Gown

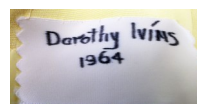
Category: Evening Gown Acquisition #67.86.10.D

Condition: Good Estimated Size: 6

Designer: Neal McClintock Store Tag: None

Donated by: Dorothy Ivins (wife of Drayton Ivins Jr.), May 3, 1986

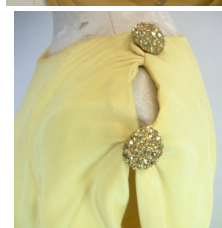
Description: This long yellow silk gown was worn by the donor in 1964. This shift style dress is lined, has a wide round neckline, long sleeves, a side slit, and a back zipper. The top of the shoulders, and down the sleeves are open. There are 2 gold buttons with rhinestones on each shoulder and one on the sleeves. The cuffs have 2 snaps and a button with loop closer. There are some stains inside the hem, and a button has fallen off.



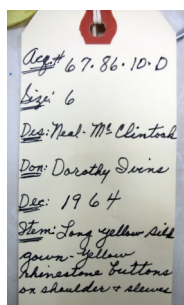
Side of sleeve



Stains on hem



Shoulder detail



Oklahoma Fashion Museum Collection

Late 1960s Cocktail Pajamas

Category: Cocktail Pajamas

Acquisition #67.86.10.E

Condition: Very Good (some holes in lining)

Size: 8

Designer: Saba, California

Store Tag: None

Donated by: Dorothy Ivins (wife of Drayton Walford Ivins, Jr., May 3, 1986)



Description: Multi-colored print cocktail pajamas in 65% polyester and 35% cotton fabric. The **top** has a V neck, long sleeves with several rows of gathered elastic, pink lining, and a waist also gathered with elastic. The **pants** have pink lining, wide legs, and a back zipper with a button closure.



Acq# 67.86.10.E
Size: 6-8
Des: Saba - Calif.
Don: Dorothy Ivins
Des: late 1960s
Stem: Multi-Color
Print Cocktail
Pajamas, 3 pc
65% Poly-35% cotton



Lining and damage



Photo by Kelsey Smith, UCO
Fashion Photography major

Oklahoma Fashion Museum Collection

1960s Eres Couture Evening Pants Suit

Category: Evening Pants Suit

Acquisition #68.86.6.B

Condition: Excellent

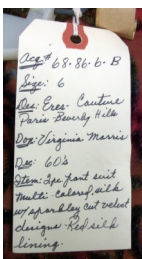
Estimated Size: 6

Designer: Eres-Couture

Store Tag: None

Donated by: Virginia Morris (wife of William Butler "Buck" Morris), May 10, 1986

Description: A 2 piece pants suit with multi-colored silk with velvet on chiffon designs. The jacket has red silk lining, a mandarin collar, long sleeves, a back vent, 2 pockets, and 5 fancy red buttons down the front.



Oklahoma Fashion Museum Collection

1960s Harvey Berin Evening Gown, designed by Karen Stark

Category: Evening Gown

Acquisition #70.86.2.A

Condition: Excellent

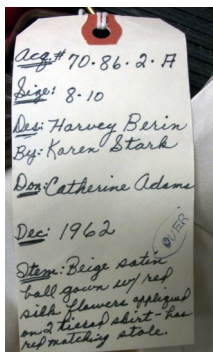
Estimated Size: 8-10

Designer: Harvey Berin by Karen Stark

Store Tag:

Donated by: Catherine Gurley Adams (wife of Lynn "Sandy" Adams), June 8, 1986

Description: A beige satin ball gown with red silk flowers appliqued on a two tiered skirt with a red satin wrap. It is sleeveless with wide shoulder straps, a square neckline, and a back zipper. The bodice has a waist stay and stays. The skirt has an attached petticoat. This gown was worn at the Beaux Arts Ball in



Appliqued rose detail



Inside view of dress

Oklahoma Fashion Museum Collection

1960s White Silk & Silver Sequined Evening Dress with Jacket by Martha

Category: Evening Gown

Acquisition #73.86.22.A

Condition: Very Good

Estimated Size: 6-8 Tall

Designer: Martha

Store Tag: None

Donated by: Ann Linn, July 4, 1986

Description: A white 8 ply silk formal gown with a solid silver sequined bodice with a silver sequin cardigan jacket. The **dress** is sleeveless with a round neck, a lined skirt and a back zipper. There is a sequin belt that attaches with 2 snaps to the waist and has 2 hooks in the back. The cardigan **jacket** is lined and has long sleeves. There are some perspiration stains on the jacket, and some fabric stains on the dress hem.



Acq # 73-86-22-A
Size: 6-8 tall
Des: Norman Norell
Des: Ann Linn
Des: Late 60's
Stm: White 8 ply silk
formal gown w/
solid sequin bodice
& cardigan jacket
also sequin belt.

PALM BEACH
Martha
NEW YORK BAL HARBOUR



Perspiration stains



Fabric stains on hem



Oklahoma Fashion Museum Collection

1960s Evening Dress

Category: Evening Dress

Acquisition #73.86.22.B

Condition: Very Good

Estimated size: 6-8

Designer: Unknown

Store Tag: Balliet's, Oklahoma City

Donated by: Ann Linn, July 4, 1986

Description: A long sheath evening dress made of white pique embroidered medallions over dark beige silk. It has cap sleeves and an attached belt with 4 hooks & loops and a snap. The back of the bodice has 8 hooks and loops, and there's a back zipper in the skirt. The bodice is partially lined, and the skirt has a 2 layer organza slip.



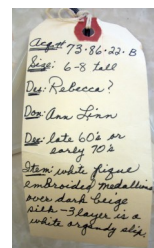
Back opening



Inside of bodice



Belt attachments in back



Oklahoma Fashion Museum Collection

1960s Black Wool Jersey Full Length Evening Dress with Boa

Category: Evening Dress

Acquisition #73.86.22.D

Condition: Very Good

Estimated Size: 6-8 Tall

Designer: Unknown

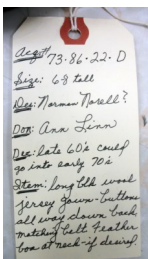
Store Tag: None

Donated by: Ann Linn, July 4, 1986

Description: A long sleeved black wool jersey gown that buttons all the way down 17 covered buttons and loops with a long slit in the back. It has 2 pockets and an attached long tie belt which could be wrapped to the front or the back. There is a black feather neck boa which can be worn with it. The fabric has a few moth holes.



View with
Feather neck
boa



Oklahoma Fashion Museum Collection

1960s Pink & Brown Evening Gown by Herbert Latimer for Irene

Category: Evening Gown

Acquisition #73.86.22.H

Condition: Excellent

Estimated Size: 8

Designer: Herbert Latimer for Irene

Store Tag: Balliet's Okla. City

Donated by: Ann Linn, July 4, 1986

Description: A long heavy formal in dark brown silk with pink circles covered with pink beads, and with pink ostrich feathers attached to the skirt. The bodice has a round neck and long sleeves with a pink cummerbun style belt with a big bow at the waist. The dress has a back zipper and is fully lined in a brown fabric.



Dep. # 73.86.22.H
Size: 8
Des: Herbert Latimer
for Irene
Don: Ann Linn
Dec: 1967-69
Item: Long formal
in dark br silk w/
pink beads & ostrich
feathers attached
to skirt
Belt w/ bow at waist

Oklahoma Fashion Museum Collection

1960-70s Pauline Trigere Black & Gold Evening Ensemble

Category: Evening Skirt & Blouse

Acquisition #73.86.22.J

Condition: Very Good

Estimated size: 8

Designer: Pauline Trigere

Store Tag: Balliet's, Okla. City

Donated by: Ann Linn, July 4, 1986

Description: A two piece evening ensemble with a black and gold metallic skirt with a companion chiffon blouse. The **blouse** can be worn inside or on the outside of the skirt. It has long sleeves with zippers at the wrist, a ruffled stand-up collar with a look & button closure at the neckline. It's gathered in back and in front at the waist. The **skirt** has fine black netting on the underside. The side opening has 2 metal clasps and a snap. There is an attached cummer bum with 4 metal clasps. The skirt is 26" at the waist and 30" long.



Acq # 73.86.22.J
Size: 8
Des: Pauline Trigere
Des: Ann Linn
Dte: 1964-71
Item: 2pc blk & gold
metallic skirt w/
companion Chiffon
Blouse.



Oklahoma Fashion Museum Collection

1960s-70s Arnold Scaasi Pink Flowered Evening Gown

Category: Evening Gown

Acquisition #73.86.22.K

Condition: Excellent

Estimated Size: 8

Designer: Arnold Scaasi

Store Tag: None

Donated by: Ann Linn, July 4, 1986

Description: A multi-colored pink floral silk taffeta formal. It is full length, has full puff sleeves and an attached belt with hooks and eyes in the back. The dress has pink lining and bodice stays. The sweetheart style neckline sits low on the shoulders.



Acq # 73.86.22.K
Size 8
Des: Arnold Scaasi
Don: Ann Linn
Date: ? 1965 to 75
Stem: Multi-colored
pink floral - silk
taffeta formal.
w/ full puff sleeves
matching belt.



Belt closure



Inside of bodice

Oklahoma Fashion Museum Collection

1960s Arnold Scassi Full Length Red Evening Gown

Category: Evening Gown

Acquisition #73.86.22.N

Condition: Excellent

Estimated Size: 8

Designer: Arnold Scassi

Store tag: None

Donated by: Ann Linn, July 4, 1986

Description: A long, red silk organza sleeveless evening gown. It has a trumpet flared skirt with tiered tucks on the neckline, hips, mid-length and on the bottom. The dress has a square neckline with 2 straps, a



Acq# 73.86.22.N
Size 8
Des: Arnold Scassi
Don: Ann Linn
Des: Long red silk
organza formal
Trumpet flare skirt
w/ tiered tucks.
Date: 1965-675.

Oklahoma Fashion Museum Collection

1960s James Galanos Silver Lace Over Blue Lame Evening Dress

Category: Evening Gown

Acquisition #73.86.22.O

Condition: Excellent

Estimated Size: 6-8

Designer: James Galanos

Store tag: None

Donated by: Ann Linn, July 4, 1986

Description: A long formal of silver medallion lace over a pale blue lame gown. The gown has spaghetti straps, a back zipper and grey lining. The dress has a high collar and a back opening with hooks and eyes and snaps for closing. The sleeves have a narrow sleeve inside a draping sleeve. A silver metal belt completes the outfit.



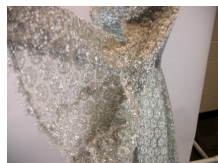
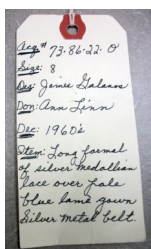
Blue lame dress underneath



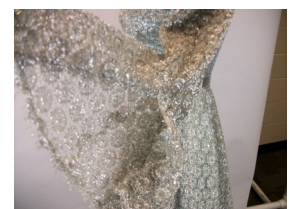
Front view of ensemble



Back view



Sleeve opening



Front view of ensemble

Oklahoma Fashion Museum Collection

1960s White Organdy Evening Gown with Applied Flowers by Rebecca

Category: Evening Gown

Acquisition #73.86.22.P

Condition: Excellent

Estimated Size: 8

Designer: Rebecca, CA

Store Tag: Balliet's, Oklahoma City

Donated by: Ann Linn, July 4, 1986

Description: A white evening dress/formal of off white organdy with large multi-colored appliqued flowers on the skirt and neckline. Sleeveless with a scoop neckline in front and low back. Cumber bun belt with purple flower and hook & eye and snap closure. The dress has a back zipper, 3 petticoats, and yellow lining.



Des # 73-86-22-P
Size: 8
Des: Rebecca-Celiff.
Don: Ann Linn
Dec: 1965-69
Stems: White organdy
formal w/ white
colored applique
flowers over skirt
& at neckline



Belt attachments



Petticoats

Bodice detail

Oklahoma Fashion Museum Collection

1960s Black Organdy Evening Dress with Embroidery Panel

Category: Evening Dress

Acquisition #73.86.22.S

Condition: Fair

Estimated size: 8

Designer: Unknown

Store Tag: None

Donated by: Ann Linn, July 4, 1986

Description: A long sleeved black organdy dress with multi-colored, embroidered panel down the front. There is also embroidery on the high neck, cuffs and hem. The dress opens in the back and has 7 black buttons with loops (2 buttons are missing) and the neck has 3 hooks & eyes. The skirt has a nylon zipper in the underskirt, and the overskirt has snaps. The bodice has a partial lining.



Back opening

Acq# 73-86-22-S
Size: 8
Ques: No label - Secar?
Des: Ann Linn
Des: ?
Note: Black organdy evening dress w/ multi-colored design on cuffs, bottom of skirt & at neckline. Long nylon zipper under the organdy.

Oklahoma Fashion Museum Collection

1960s Pauline Trigere Gold Evening Ensemble

Category: Evening Ensemble

Acquisition #73.86.22.T

Condition: Excellent

Estimated size: 8

Designer: Pauline Trigere

Estimated Date: 1960-65

Donated by: Ann L. Linn, (Oklahoma City), July 14, 1986

Description: This ankle length formal is very light weight and is made of gold lace with leaf designs on the top, and the skirt portion has 2 layers of gold netting with small gold dots on it. It has spaghetti straps and a side zipper. This formal also has a short, matching gold lace jacket with leg-o-muffin sleeves with snaps.



Acq# 73.86.22.T
Size 8
Des: Pauline Trigere
Don: Ann Linn
Dat: 1960-65
Item: Gold lace
ankle length formal
w/ short jacket
jacket w/ leg-o-muffin
sleeves



Oklahoma Fashion Museum Collection

Late 1960s– Early 70s Ares Evening Pants with Sleeveless Coat

Category: Evening Pants Outfit

Acquisition #74.86.21.N

Condition: Excellent

Estimated Size: 8 Tall

Designer: Ares

Donated by: Ann Linn, July 6, 1986

Description: A pair of pants and a full length sleeveless evening coat made in stenciled suede material in a toast color with rust and brown designs. The pants have brown lining and a metal zipper with a hook and eye. The coat has full beige lining.



Acq# 74.86.21.N
Size: tall 8
Des: Ares made in
Mexico
Des: Ann Linn
Date: ? 60s
Stem: 2 pc stenciled
suede pant + sleeve-
less evening coat
Toast color w/ rust
& brown designs
Needs turtle neck
sweater



Oklahoma Fashion Museum Collection

1960s Black Lace Evening Coat or Peignoir

Category: Evening Coat or Peignoir
Condition: Excellent
Designer: Unknown
Donated by: Ann A. Linn (July 6, 1986)

Acquisition #74.86.21.P
Estimated Size: 8-10 Tall
Store Tag: None

Description: A long, black lace evening coat, or “at home” peignoir. It has a front opening with 4 round covered buttons with loop hooks—2 at the neck and 2 in front. There are black flowers with white centers around the neck, down the front and around the bottom. It has a high neck and long, scalloped angel sleeves. The front opening and hem are also scalloped.



Neck Detail



Flower detail



Sleeve



Lace detail



Acq# 74.86.21.P
Size: 8-10 tall
Des: unknown
Don: Ann Linn
Obj: ?
Item: Long lll lace
evening coat, or
at home peignoir

Oklahoma Fashion Museum Collection

1960s Full Length White Satin Brocade & Gold Evening Gown

Category: Evening Gown

Acquisition #74.86.21.U

Condition: Very Good

Estimated Size: 8-10

Designer: Custom Made

Store Tag: None

Donated by: Ann Linn, July 4, 1986

Description: A heavy white satin brocade sleeveless long dress with gold trim. The dress has a round neck and back zipper, with an attached jacket front with gold trim at the bottom. The hem has a gold border, and there are gold strips down each side. The back has a gold panel and there are 2 attached extra panels with gold lining, gold strips down the middle and on the hem, and 3 gold bows.



Acq# 74-86-21-U
Est: 8-10
Des: Custom made
foreign
Des: Ann Linn
Des: ?
Stem: Heavy white
satin brocade w/
metallic gold trim
& panels.

Back Views

Oklahoma Fashion Museum Collection

1960s Harvey Berin Full Length Multi-Colored Evening Dress

Designed by Karen Stark

Category: Evening Dress Acquisition #76.86.1
Condition: Very Good Size: 12
Designer: Harvey Berin designed by Karen Stark Store Tag: None
Donated by: Mex L. Frates (wife of Clifford L. Frates), July 18, 1986

Description: A long blue silk faille, full length evening dress with gold and pink metallic thread designs on a blue background. The dress has a high neck, long sleeves, a matching belt and a back zipper. The cuffs and neck band are covered with pink, blue, and crystal beads over gold braid. There are a couple of beads missing on the front of the collar.

HARVEY BERIN
designed by
Karen Stark



Acq# 76.86.1+
Size: tall 10-12
Des: Harvey Berin
By: Karen Stark
Don: Mex. Frates
Mrs. Clifford
Des: 60s
Stem: Long blue
silk faille evening
dress w/ gold + pink
metallic thread
designs on fabric.
Cuff + neck band
beads

Cont.
Covered w/ pink,
blue + crystal
beads. Has matching
belt.
+ 1 pr. pink + crystal
drop earrings.

1124 HARVEY 12
BERIN

Belt stamp



Collar Detail



Cuff Detail

Oklahoma Fashion Museum Collection

1960s Countess Alexander Green & White Brocade Evening Dress

Category: Evening Dress

Acquisition #77.86.20.K

Condition: Excellent

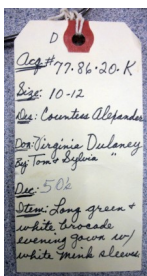
Estimated size: 10-12

Designer: Countess Alexander, NY

Store tag: None

Owned by: Virginia Piersol Dulaney (wife of Luther T. Dulaney)

Description: A long green and white brocade evening dress with short white mink sleeves. The dress has a back zipper and a round neck. The original price for dresses by this designer ranged from \$250 to \$2000. Donated by Tom & Sylvia Dulaney, July 29, 1986.



Oklahoma Fashion Museum Collection

1960s Blue Satin & Lace Evening Gown by Rosalie Macrini

Category: Evening Gown

Acquisition #77.86.20.L

Condition: Good

Estimated size: 10-12

Designer: Rosalie MaCrini, NY

Store Tag: None

Owned by: Virginia Piersol Dulaney (wife of Luther T. Dulaney)

Description: A long pale blue satin evening gown. It has an embroidered lace bodice with a round neck, 3/4 sleeves with white mink trim, and a back zipper. The skirt of the gown has 2 large darts in the front with 2 large satin bows on the back sides. The skirt needs to be re-hemmed. Donated by: Tom & Sylvia Dulaney, July 28, 1986



D
Acq # 77.86.20.L
Size: 10-12
Des: Rosalie Macrini
Don: Virginia Dulaney
By: Tom & Sylvia
Des: 50s
Item: Long pale blue
antique looking gown
Embroidered lace
Bodice w/ white mink
on sleeves



Bodice lace detail

Oklahoma Fashion Museum Collection

1960s Long Grey Evening Gown by Victoria Royal, Ltd.

Category: Evening Gown

Acquisition #78.86.20.R

Condition: Very Good

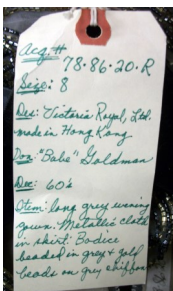
Size: 8

Designer: Victoria Royal Ltd.

Store Tag: None

Donated by: Margaret Katz (Babe) Goldman (wife of Sylvan "Syl" Nathan Goldman), August 20, 1986

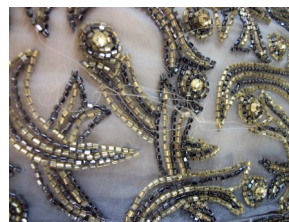
Description: A long grey evening with a metallic cloth skirt with petticoat, and a bodice beaded in grey and gold beads on grey chiffon. The dress has a round neck, long sleeves with a zipper opening, seam pockets, a back zipper, and a gold bow around the waist. It was made in the British Crown Colony of Hong Kong. There are some loose chiffon threads on the bodice.



Skirt fabric



Petticoats



Beading detail



Bodice detail



Oklahoma Fashion Museum Collection

1960s Mr. Blackwell Black Crepe & Lace Evening Gown

Category: Evening Gown

Acquisition #87.86.5.E

Condition: Excellent

Estimated Size: 10

Designer: Mr. Blackwell

Store Tag: Silver Key

Donated by: Kathleen Nicholson (Mrs. V.S. Nicholson), November 15, 1986

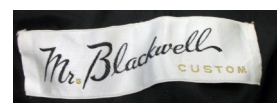
Description: A black crepe dress with black tulip lace and sequins on top which drapes in front and has a big bow at the center of the V neck. It has spaghetti straps, a scoop neck in back, and a back zipper with snaps in the lace that covers it. The original price ranged from \$800 to \$1,000.



Back View



Front View

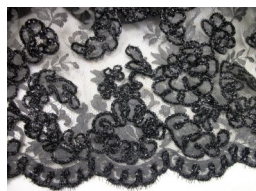


Store tag



Bow in front

ACA-87-86-5-E
SIZE 10
DES - Mr. Blackwell
DON - Mrs. V.S. Nicholson
DECA - 60's
MATERIAL - TULIP LACE
FINISH OVER BLUE
CREPE LACE - BLACK
LACE CHENILLE EMB.



Lace and sequin detail

Oklahoma Fashion Museum Collection

1960s Jobere Pink Crepe Evening Gown with Beaded Top by Morty Sussman

Category: Evening Gown

Acquisition #94.86.8.G

Condition: Good

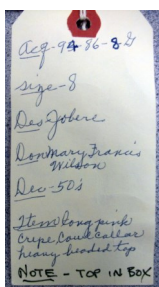
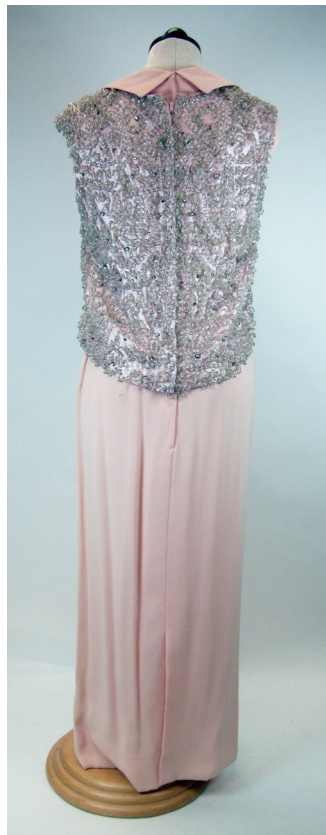
Estimated size: 8

Designer: Jobere by Morty Sussman

Store tag: Handel's at Nichols Hills, Okla. City

Donated by: Mary Francis Wilson (wife of Tom B. Wilson), November 24, 1986

Description: Long pink crepe sleeveless evening gown with a cowl collar, lined, has a back zipper and a kick pleat. A sleeveless, heavily beaded top with rhinestones completes this outfit. The top has a back zipper and is lined. Flaws: the skirt has some soiling, and the neck has some collar stains.



Detail of Beading



Oklahoma Fashion Museum Collection

1960s Robert Rosenfeld Original Black Evening Caftan

Category: Evening Caftan

Acquisition #98.86.22.K

Condition: Excellent

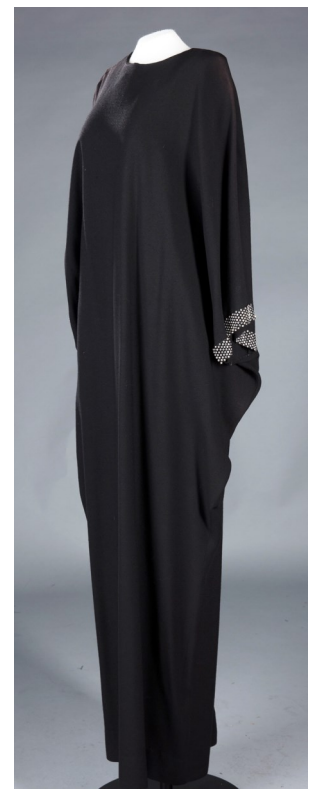
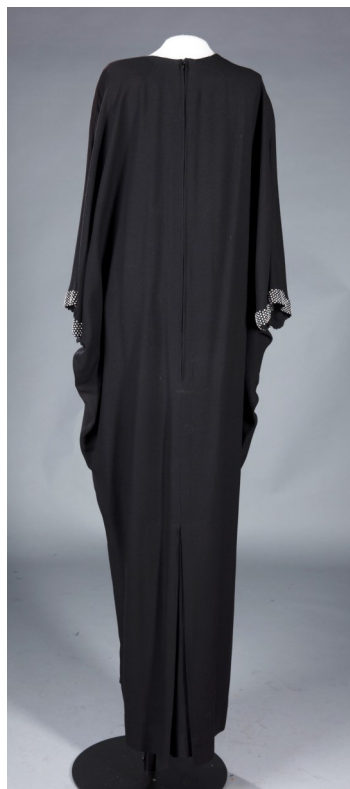
Estimated size: 10-12

Designer: Robert Rosenfeld Original in Quality Fabrics

Store Tag: None

Donated by: Rita Sue Frank (wife of Joe Frank), Dec. 22, 1986

Description: A black evening caftan with a high round neck, a back zipper, and several rows of rhinestones along the bottom of the arm opening. The caftan has a back zipper.



D
Acq # 98-86-22-K
Size: 10-12
Des: Robert Rosenfeld
Don: Rita Sue Frank
Dis: 60 1/2
Stem: Black caftan
w/ rhinestone
cuffs. - high round
neck.



Rhinestone detail

Side view of rhinestones on sleeves

Oklahoma Fashion Museum Collection

1960s Long Hot Pink Evening Dress by Mardi Gras

Category: Evening Dress

Acquisition #101.86.3.B

Condition: Very Good

Size Tag: 8

Designer: Mardi Gras, New York

Store Tag: The Penthouse Shop

Donated by: Sylvia Dulaney (wife of Luther T. Dulaney), December 28, 1986

Description: A hot pink silk shantung sleeveless evening dress. It has a V neck in front, a scoop neck in back, and a back metal zipper. The bodice has pink lining and a large rhinestone attached on top of a bound buttonhole for decoration. The donor wore this gown in the Miss West Virginia pageant. It has a slight fabric stain on the front.



Acq. # 101.86.3.B
Size: 4
Don: Sylvia Dulaney
Dec: 60s
Item: Hot pink silk shantung evening dress - sleeveless. Sylvia wore this in the "Miss West Va. Pageant."



Oklahoma Fashion Museum Collection

1960s Young America Black Crepe Evening Dress by Oleg Cassini

Category: Evening Dress

Acquisition #108.87.21.T

Condition: Excellent

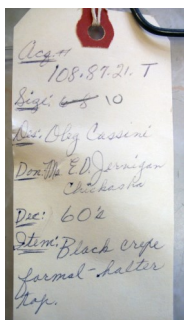
Estimated Size: 10

Designer: Young America by Oleg Cassini

Store Tag: None

Donated by: Betty Jernigan (wife of E.D. Jernigan, Chickasha, OK) Aug. 5, 1987

Description: A sleeveless black crepe halter style long dress with a slit opening in the front, a keyhole opening in the bodice, and a round neck. The back has an open triangle where the bodice wraps behind the arms and fastens at the neck with a hook and eye. There is a matching belt, and a back zipper.



Oklahoma Fashion Museum Collection

1960s Norman Norell Yellow Flowered 2 Piece Evening Gown

Category: Evening Gown

Acquisition #125.88.3.A

Condition: Excellent

Estimated size: 8-10

Designer: Norman Norell

Store Tag: Balliet's

Donated by: Jane Edwards Champlin (Enid, Okla.), March 8, 1988

Description: Two piece yellow evening gown. Skirt is made of yellow print brocade and cut velvet with a satin apricot sash. The skirt closes in back with snaps and hooks, and is lined. The yellow top is beaded, sleeveless, has a round neck and a back zipper. It is not beaded from the waist down. The donor wore this gown as honor attendant at an Oklahoma Hall of Fame Banquet.



Acq# 125.88.3.A
Size: 8-10
Des: Norman Norell
Don: Jane E. Champlin
Enid
Dec: 1954
Stem: 2pc yellow
Evening gown. yel
print brocade/cut
velvet skirt w/
apricot sash
Yellow beaded top
(over)

She wore this
as honor attendant
at Okla. Hall of
Fame Banquet



Back Opening

Oklahoma Fashion Museum Collection

1960s Evening Pants Ensemble by Liz Berg for Bernie Bee

Category: Pants Outfit

Acquisition #134.88.3.B

Condition: Good

Estimated Size: 10

Designer: Liz Berg for Bernie Bee, N.Y.

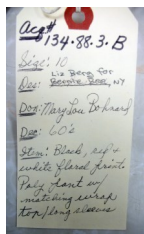
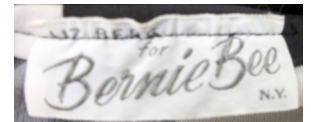
Store Tag: None

Donated by: Mary Lou Bohnard, May 30, 1988

Description: A polyester pants outfit in black, red, and white floral print. The pants have an elastic casing which needs slight repair. The top is a long sleeved tie top without a collar.



Tie top



Oklahoma Fashion Museum Collection

1960s Norman Norell Full Length Cream Wool Evening Dress

Category: Evening Gown

Acquisition #136.88.20.N

Condition: Excellent

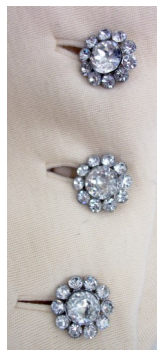
Estimated Size: 10

Designer: Norman Norell

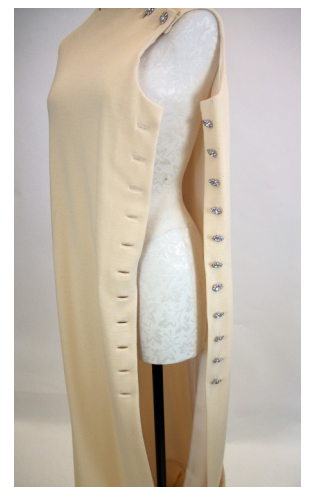
Store Tag: None

Owned by: Vivian Nichols Coyle (wife of John W. Coyle, Sr.)

Description: A sleeveless white/cream wool long dress with a round neck and attached long belt ties. It has a shoulder and side opening with large rhinestone buttons and bound buttonholes. The shoulder has 3 buttons and 2 snaps, and the left side has 11 buttons. The fabric has some moth holes. Donated by John W. Coyle, Sr., June 25, 1988.



Button detail



ACA # 136-88-20.N
SIZE - 10
DES - NORELL
DON - VIVIAN COYLE
DTC - 70's or 60's
ITEM - Long, white
WOOL SLIP
SLEEVELESS FORMAL
FRONT RHINESTONES
BUTTONS

Oklahoma Fashion Museum Collection

1960s Green Chiffon Evening Gown by Roger Milot for Fred Perlberg

Category: Evening Gown

Acquisition #143.88.1

Condition: Good

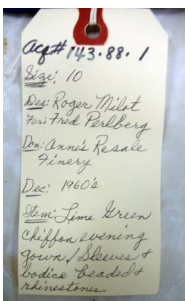
Estimated Size: 10

Designer: Roger Milot for Fred Perlberg

Store Tag: Balliets, Okla. City

Donated by: Anne's Resale Finery in Edmond, Okla., August 25, 1988

Description: A lime green chiffon evening gown with long sleeves and a high neck. The neck, bodice, sleeves and waist have beads and rhinestones sewn on. The gathered skirt has 2 layers of green chiffon with a yellow slip. Some of the beading is loose and/or missing.



Yellow slip under skirt



Bodice detail



Waist beading detail

Oklahoma Fashion Museum Collection

1960s Long White Cotton and Lace Evening Dress

Category: Evening Dress

Acquisition #161.89.3.D

Condition: Excellent

Estimated Size: 10

Designer: Unknown

Store Tag: None

Donated by: Mr. Haywood Vaughan (Ardmore, OK), November 12, 1989

Description: A long white cotton evening dress with 3/4 length bell sleeves and a back metal zipper. The bodice has a V neck in front and back with horizontal tucking and lace insets. The skirt has horizontal tucks and with lace in-between the tucked panels.



Acq # 161.89.3.D
Size: 10
Des: unknown
Don: Haywood Vaughan
Ardmore
Dec: 60's
Item: Long white
Cotton Evening Dress
Lace trim Panels on
skirt w/ vertical
tucked lace. 2008

V-neck front
& back (zipper)
lace on sleeves



Oklahoma Fashion Museum Collection

1960s Red Lips Sequined Evening Gown and Coat Ensemble

Category: Evening Gown and Coat

Acquisition #175.90.3.A

Condition: Good

Estimated Size: 10

Designer: Unknown

Store Tag: Gene Shelley's Boutique Int'l

Owned by: Lorene Rush Highley (wife of Fred A. Highley)

Description: This evening gown and coat were made in Hong Kong and have a 100% wool sweater base covered with sequins. The **dress**, has long sleeves with zipper openings, a round neck, a back zipper, a side slit, and is completely covered with iridescent sequins. It also has a wide belt with 4 snaps. The **coat** has long sleeves, a round neck, and is covered with iridescent sequins with red sequins in lip patterns all over. Both have some moth holes and some loose sequins. Donated by Betty Loving on Dec. 16, 1990.



Sleeve zipper

Sept 175.90.3.17
Size: 10
Designer: unknown
Hong Kong Era
Own: Lorene Highley
Acq: Betty Loving
Est: 60's
Desc: Solid iridescent
sequin evening dress
& long coat. Dress has
long sleeves. Coat has
large red sequin
designs.

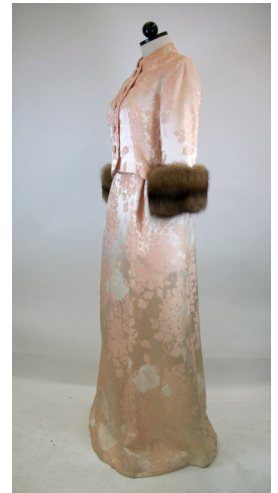


Oklahoma Fashion Museum Collection

1960s Evening Gown with Jacket by Martha

Category: Evening Gown Ensemble Acquisition #183.91.12.D
 Condition: Fair Estimated size: 4-6
 Designer: Martha (Palm Beach, NY, Miami Beach) Store Tag: None
 Donor: June Durland (wife of Jack Raymond Durland), August 20, 1991

Description: A pink dress and matching jacket in silk embossed fabric with flower designs. The **gown** is sleeveless with a scoop neck in front and back. The front of the bodice has 3 fabric covered stays attached on one end. The gown closes with a back zipper and 4 covered buttons. There are 2 seam pockets. The **jacket** has pink satin lining, 3/4 sleeves with born mink cuffs, and 5 covered buttons with 2 additional snaps. There are some perspiration stains, and the skirt needs hemming.



Dress bodice front inside



Fabric detail



1970s

Long Evening Wear

Oklahoma Fashion Museum Collection

1970s Oscar de la Renta Long Red Evening Dress

Category: Evening Dress

Acquisition #15.85.9.A

Condition: Excellent

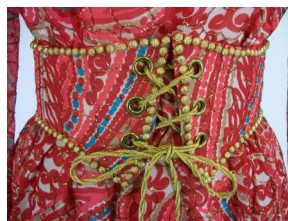
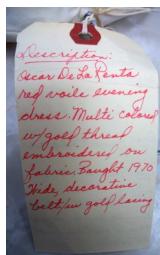
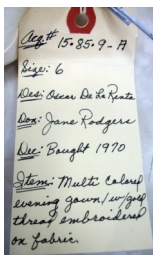
Estimated size: 6

Designer: Oscar de la Renta

Store Tag: Balliet's, Okla. City

Donated by: Jane Rodgers (wife of Leo Rodgers Jr.), June 8, 1985

Description: A long voile evening dress with fabric patterns in red, blue, brown and white with red and gold threads embroidered on the fabric. The bodice has long sleeves and a scoop neck with gold beads around it. There is a matching cinch waist belt with gold beads on the edges, and gold cords for tying.



Belt



Fabric detail

Oklahoma Fashion Museum Collection

1970s Ronald Amey Long Black & White Cotton Evening Dress

Category: Dress

Acquisition # 15.85.9.E

Condition: Very Good

Estimated size: 6

Designer: Ronald Amey

Store Tag: none

Donated by: Jane Rodgers (wife of Leo Rodgers Jr.), June 8, 1985

Description: A fine cotton long evening dress with long sleeves, an empire waist, and in an unusual black and white print. The sleeves are 3/4 length and are open all the way down. The cuffs have 3 crystal buttons and loops. There is 3 inch wide lace around the neck, across the shoulder, on each side of the sleeve openings, on the cuffs, and around the waist. The dress has white lining and a back zipper. There are some fabric stains on the collar. Estimated Cost: \$900.



Acq# 15-85-9-E
 Size 6
 Des. Ronald Amey
 Don. Mrs. Leo Rodgers
 June
 Dec. 75-76
 Item: Black & white
 floral print - fine
 cotton w/ 3" wide
 lace trim.

Description:
 Fine cotton - unusual
 black & white print,
 long evening dress.
 3" wide lace in white
 at neck down the
 sleeves & cuffs &
 empire waist.
 3 large crystal
 buttons on cuffs
 w/ loops. Est. cost \$900.00



Lace detail



Cuff & Buttons

Oklahoma Fashion Museum Collection

1973-74 Ronald Amey Long Black Evening Dress with Border Print

Category: Evening Dress

Acquisition #15.85.9.F

Condition: Good

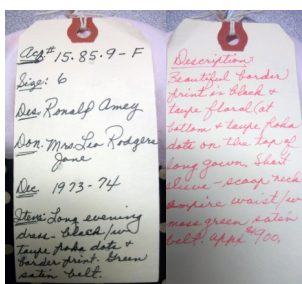
Estimated size: 6

Designer: Ronald Amey

Store Tag:: Balliets, Okla. City

Donated by: Jane Rodgers (wife of Leo Rodgers, Jr.), June 8, 1985

Description: A long evening dress with black and taupe polka dots. It has short sleeves, a scoop neck, and empire waist with a green satin belt, black lining, a back zipper, front slit pockets, and a border flower print at the bottom of the skirt. The belt has 2 covered buttons in the back and 2 snaps. There are a few moth holes.



Oklahoma Fashion Museum Collection

1970s Zanda Rhodes Silk Chiffon Evening Ensemble

Category: Evening Dress

Acquisition #15.85.9.G

Condition: Excellent

Estimated size: 2-6 small

Designer: Zanda Rhodes, London

Store Tag: none

Donated by: Jane Rodgers (wife of Leo M. "Buddy" Rodgers Jr.), June 8, 1985

Description: This 3 piece evening ensemble consists of a yellow slip with a pleated skirt, a camisole, and a tabard. It is part of the designer's *Ayers Rock Collection*, style #75/1. The fabric is silk chiffon and screen printed in green, cream and pink in the "Feather and Wiggle" print, with the tabard in the "Lace Mountain" print with pleated pale pink acetate satin ribbon edging, and a handmade artificial orange blossom flowers at V-neckline on the tabard. Original cost \$1,000.



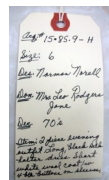
Acq# 15.85.9-G
 Size: 6
 Des: Zanda Rhodes
 Des: Mrs. Leo Rodgers
 Jane
 Dec. 1973-74
 Item: 3 piece evening
 dress. Multi colored
 (green, pink, cream)
 pleated silk

Oklahoma Fashion Museum Collection

1970s Norman Norell Long Black Evening Dress with Jacket

Category: Evening Dress with Jacket Acquisition #15.85.9.H
Condition: Very Good Estimated size: 6
Designer: Norman Norell Store Tag: Balliet's, Okla. City
Donated by: Jane Rodgers (wife of Leo Rodgers Jr.), June 8, 1985

Description: A long black silk halter style **dress** with an attached tie for a bow. It has 20 buttons down the front with bound buttonholes, bare shoulders, and is A-line. It has a short cream wool **jacket** with a notched collar, and 4 black buttons with bound buttonholes on the long sleeves. There are a few moth holes in the jacket. Original cost: \$1,200



Oklahoma Fashion Museum Collection

1970s Long Black Velvet Evening Coat

Category: Evening Coat

Acquisition #18.85.10.8

Condition: Fair

Estimated size: 8-10

Designer: Unknown

Donated by: Cindy Reimer, August 1, 1985

Description: A long black velvet evening coat with a hood lined with cream fur. The coat has long sleeves, and the word "Bayfield" is written inside at the neckline. The coat closes with 2 large covered buttons and loops, with a velvet tie at the hood. The coat has white lining with 2 straps inside.



Inside view



Hood & Ties

Acq. # 18.85.10-8
 Size: 8-10
 Des: un.
 Don: Cindy Reimer
 Dec: any period 1970s
 Item: Black velvet evening coat. White satin lining.

Oklahoma Fashion Museum Collection

1970s Estevez Long Brown Polyester Evening Gown

Category: Evening Gown

Acquisition #18.85.10.H

Condition: Excellent

Estimated size: 6-8 tall

Designer: Estevez

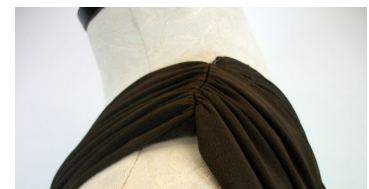
Store tag: Apropos, Inc.

Donated by: Cindy Reimer, August 1, 1986

Description: A long brown polyester evening gown with one bare shoulder, a draped bust and a back streamer that attaches with 3 hooks and eyes on one shoulder. Shown also is a view with the streamers over the right shoulder. It has brown lining and a size zipper.



Acq. # 18-85-10-H
Size: 6-8-tall
Des: Estevez
Don: Cindy Reimer
Dec: 70's
Style: Strapless
Evening Gown in
brown polyester draped
back streamer in
back.



Shoulder Attachment

Oklahoma Fashion Museum Collection

1970s Pattullo Jo Copeland Long Black & Pink Evening Dress

Category: Evening Dress

Acquisition #41.85.2.A

Condition: Fair

Estimated size: 10

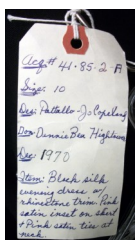
Designer: Pattullo Jo Copeland

Store Tag: none

Donated by: Dannie Bea Hightower (wife of Frank James Hightower), Nov. 22, 1985

Description: A sleeveless black silk dress with a long slit up one side and a pink satin insert. There is rhinestone trim around the arms, and around the skirt slit. The dress has an attached sash at the neck with a pink satin backing. The rhinestones trim on the arms need to be reattached, and there are some perspiration stains.

Pattullo Jo Copeland



Loose rhinestone trim



Side slit

Oklahoma Fashion Museum Collection

1972 Gold Lame Long Evening Gown

Category: Evening Gown

Acquisition #41.85.2.B

Condition: Very Good

Estimated size: 8-10

Designer: Unknown

Store tag: none

Donated by: Dannie Bea Hightower (wife of Frank James Hightower), Nov. 22, 1985

Description: A long gold lame sleeveless dress. It has a scoop neckline in front and back, a fitted waist, and a back zipper. It has brown lining and a slit up one side. There are some perspiration stains, and a stain on the lining.



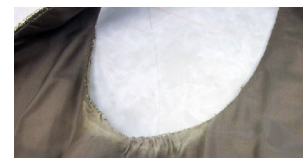
Acq # 41.85.2-B
Size 8-10
Des: unknown
Don: Dannie Bea Hightower
Date: 1972
Item: Solid gold lame - no sleeves - scoop neckline front & back - no trim



Bodice detail



Water damage



Perspiration stains

Oklahoma Fashion Museum Collection

1970s Oscar de la Renta Long Navy Blue Polka Dot Dress

Category: Dress

Acquisition #49.86.11.A

Condition: Excellent

Estimated size: 8-10

Designer: Oscar de La Renta

Store Tag: Balliet's, Oklahoma City

Donated by: Joanna Champlin, January 15, 1986

Description: A full length sleeveless dress in navy blue organdy with white polka dots. The U neck has a single ruffle, and the hem has 2 ruffles. The dress has a back zipper, a navy blue belt, and navy blue petticoats.



Oscar de La Renta



Tag # 49.86.11-A
Size:
Des: Oscar de La Renta
Don: Joanna Champlin
Des: 1972
Desc: Blue organdy
long dress w/ white
polka dots. Ruffles
at neck & on bottom
of skirt. White org.



Petticoats

Oklahoma Fashion Museum Collection

1970s Oscar de la Renta Long Red Silk Evening Dress

Category: Long Evening Dress

Acquisition #49.86.11.B

Condition: Excellent

Estimated size: 12

Designer: Oscar de la Renta

Store Tag: Balliet's, Okla. City

Donated by: Joanna Champlin, Jan. 5, 1986

Description: A long red silk peau de soie long dress with a full skirt, short puffed sleeves, a wide matching belt, ruffles down the bodice front, and a white collar and cuffs (both of which are removable). The skirt has 2 red taffeta slips. The dress opens in front with 4 white buttons, a hook & eye at the waist, and snaps on the skirt opening. There is an extra collar and cuffs with the dress.



Extra collar and cuffs



49.86.11.B
Eve
Oscar de la Renta
Donated by Joanna Champlin
Date: 1986
Description: Red silk peau de soie long dress with ruffles, hook & eye at waist, collar, cuffs, and skirt opening. (2 slips)

Oklahoma Fashion Museum Collection

1970s Ric McClintock Long Orange & Green Evening Gown

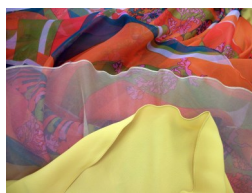
Category: Evening Gown Acquisition #49.86.11.G
 Condition: Very Good Estimated size: 10 Tall
 Designer: Ric McClintock Store tag: Virginia's
 Donated by: Joanna Champlin, January 5, 1986

Description: A long organdy ball gown in multi colors of green, orange and pink with yellow lining. It has a green organdy cummer bun that fastens with 3 hooks & eyes and snaps, and a back zipper. The dress has long sleeves with 3 looped buttons, a scoop neck, and a sheer yellow petticoat over the yellow slip. An inside tag has a date of Feb. 18, 1970. The dress has a few fabric stains and some perspiration stains.



Acq# 49.86.11.G
 Size: 10 tall
 Designer: Ric McClintock
 Donor: Joanna Champlin
 Date: 1986
 Notes: long organdy
 back zipper
 color of green
 orange green organdy
 cummerbund

BB-66
 STYLE SIZE SHADE
 # 446
 283 12
 Ric McClintock
 FEB 18 1970
 DRESS 6609



Petticoat & slip



Inside tag with date

Oklahoma Fashion Museum Collection

1970s Geoffrey Beene Long Black Evening Dress

Category: Evening Dress

Acquisition #53.86.4.B

Condition: Excellent

Estimated size: 8

Designer: Geoffrey Beene

Store Tag: Balliet's, Okla. City

Donated by: Peggy Jeanne Ford Sanders (wife of Millard W. Sanders), January 20, 1985

Description: A long black evening dress with a white appliqued bow on the front with rhinestone trim. The dress has a round neck, short sleeves, and a back zipper. It has black lining and a slit on one side.



Acq. # 53.86.4.B
Size: 8 Tall made
Des: Geoffrey Beene
Don: Peggy Sanders
Dec: 1970s?
Item: long black evening dress w/white appliqued bow + rhinestone trim. short sleeves + round neck.



GEOFFREY BEENE

Balliet's
OKLAHOMA CITY

Oklahoma Fashion Museum Collection

1970s Halston Long White Silk Halter Evening Dress with Red Tulips

Category: Evening Dress

Acquisition #53.86.4.D

Condition: Very Good

Estimated size: 8-10

Designer: Halston

Store Tag: none

Donated by: Peggy Jeanne Ford Sanders (wife of Millard W. Sanders), January 20, 1986

Description: A long white silk halter evening dress with red tulips printed on it, and with a matching scarf. The dress has a front opening with 2 hooks and eyes and 1 snap. There are slight perspiration stains.



Dress with Shawl



Acq. # 53.86.4.D
Size: 8-10 *tail made*
Des: Halston
Don: Peggy Sanders
Dec: late 70s
Item: long white
halter evening dress
w/ scarf. White silk
w/ red flowers.

Oklahoma Fashion Museum Collection

1970s Halston IV Brown Polyester Evening Dress

Category: Evening Gown

Acquisition #58.86.24.M

Condition: Excellent

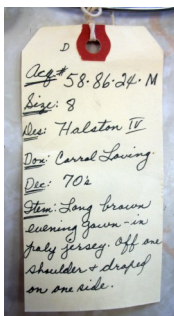
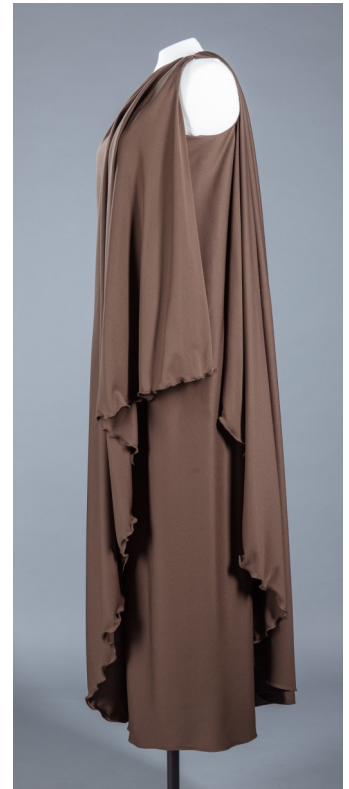
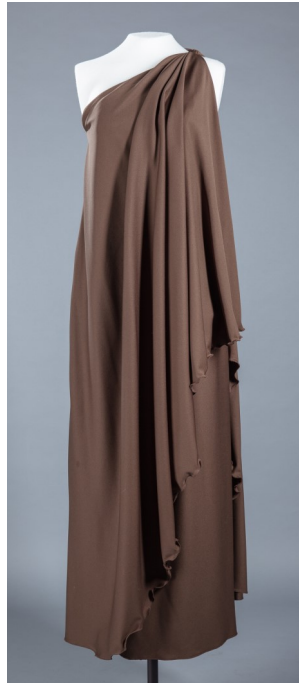
Estimated size: 8

Designer: Halston IV

Store tag: none

Owned by: Hazel "Carrol" McLemore Loving (wife of William Albert Loving)

Description: A sleeveless evening gown in brown polyester jersey with one bare shoulder and draping on one side. The gown attaches at the top of one shoulder. Donated by the donor's daughter, Pat Schweinsberg on Feb. 6, 1986.



Oklahoma Fashion Museum Collection

1970s Long Black Evening Gown by Rudi Gernreich

Category: Evening Gown

Acquisition #58.86.24.N

Condition: Very Good

Size: Medium

Designer: Rudi Gernreich for Bob Cunningham

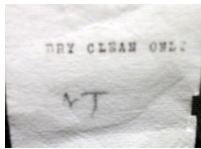
Store Tag: None

Owned by: Hazel "Carrol" McLemore Loving (wife of William Albert Loving)

Description: A 100% nylon black jersey evening gown, full length. It is strapless except for a white metal piece on one shoulder. It has a slit up the left side. The inside tags say it's style 461, RN 88037, Dry clean only. Donated by the donor's daughter, Pat Schweinsbert, on Feb. 6, 1986.



D
 Acq # 58.86.24.N
 Size: 6-8
 Des: Rudi Gernreich
 Des: Carrol Loving
 Des: 60s maybe 70s
 Des: Black jersey evening gown - a strapless tube except for a silver piece on one shoulder.



Inside tags

Oklahoma Fashion Museum Collection

1970s White Polyester Evening Gown

Category: Evening Gown

Acquisition #58.86.24.Q

Condition: Excellent

Size: 5

Designer: Unknown

Owned by: Hazel "Carrol" McLemore Loving (wife of William Albert

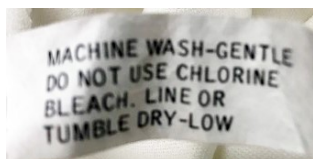
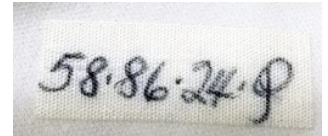
Description: ~~Loving~~ white polyester evening gown. It drapes off of one shoulder and has hanging loops inside. It also has a size tag and a care tag inside. This dress was donated by her daughter, Pat Schweinsberg on Feb. 6, 1986.



Back



Front

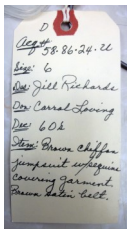


Oklahoma Fashion Museum Collection

1970s Evening Sequined Jumpsuit by Jill Richards

Category: Evening Jumpsuit Acquisition #58.86.24.U
Condition: Excellent Estimated size: 6
Designer: Jill Richards Store Tag: None
Owned by: Hazel "Carrol" McLeMore Loving (wife of William Albert Loving).

Description: An evening jumpsuit in brown chiffon and covered with brown sequins. It has long sleeves, a high neck, a front zipper, an elastic waist, and a wide brown satin belt. Donated by the owner's daughter, Pat Schweinsberg on Feb. 6, 1986.



Open neckline



Closed neckline



Oklahoma Fashion Museum Collection

1970s Long Turquoise & Multi-Colored Evening Dress by Helen Rose

Category: Evening Dress

Acquisition #64.86.2.B

Condition: Good

Size: 16

Designer: Helen Rose

Store Tag: none

Donated by: Margaret Ellen "Randy" Randerson Fellers (wife of James "Jimmy" D. Fellers), Apr. 10, 1986

Description: A multicolored chiffon evening dress purchased in 1975. The **bodice** has a scoop neck in front with sheer fabric covering the neck and forming the sleeves; the back is low. The **skirt** is made with multicolored panels in lime green, turquoise, pink and beige, is full length and gathered. The dress has a **cumber-bun belt** with 4 covered buttons and loops. There are quite a few fabric stains on the garment.



64.86.2.B
Size: 10-12
Designer: Helen Rose
Donor: Randy Fellers
Date: 1975
Notes: Multi-colored
chiffon evening
dress long 1970s
designer: Helen Rose
the front of the dress
color: turquoise, pink,
lime green, beige

1975
Randy bought this
to wear at Jimmy's
Reception in Monticello
when he was Pres. of
American Bar Assoc.
Fellers she wears the
same dress when
he was taken into
the Old Hall of Fame
1980?

Oklahoma Fashion Museum Collection

1970s Jill Richards Long Black Jersey Halter Dress

Category: Cocktail Dress

Acquisition #67.86.10.B

Condition: Excellent

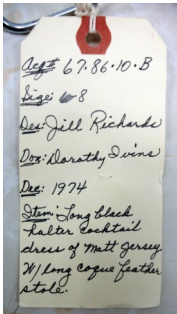
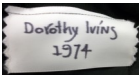
Estimated size: 8

Designer: Jill Richards

Store Tag: none

Owned by: Dorothy Ivins (wife of Drayton Walford Ivins, Jr.) donated May 3, 1986

Description: A long black halter cocktail dress in matte jersey. It has a V neck with an open back, and the neck has a 2 button closure. It has a back zipper with a hook and eye. There is a long matching stole with black coque feathers at each end. The donor bought this dress in 1974.



Oklahoma Fashion Museum Collection

1970s ZiZi International Full Length Gold Cocktail Ensemble

Category: Sweater & long skirt

Acquisition #67.86.10.F

Condition: Good

Estimated size: 6

Inside tag: ZiZi International Ltd.

Store Tag: None

Donated by: Dorothy Ivins (wife of Drayton Walford Ivins Jr.), May 3, 1986

Description: A 2 piece cocktail outfit with a long gold lame' skirt and a beige sweater with interwoven gold metallic thread. The sweater has a gold band at the neck and on the sleeves. It is made of 40% lambs wool, 28% angora rabbit hair, 15% metallic, 10% polyester and 3% nylon. The sweater was made in Hong Kong. The waistband has some damage and the sweater has a stain.



Front View



Skirt tag



Sweater tag



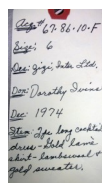
Waistband damage



Sweater stain



Back View



Oklahoma Fashion Museum Collection

1970s Helena Barbieri Original Pink Evening Gown and Coat

Category: Evening Gown

Acquisition #68.86.6.F

Condition: Excellent

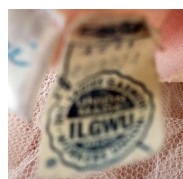
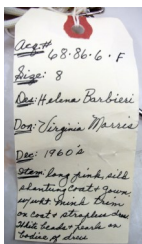
Estimated Size: 8

Designer: Helena Barbieri Original

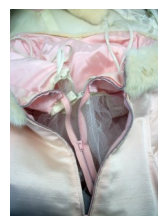
Store Tag: Balliet's, Okla. City

Donated by: Virginia Morris (wife of William Butler Morris), May 10, 1986

Description: A long pink silk shantung coat and gown with white mink trim. The strapless **gown** has white mink on the top of the bodice with white pearls and beads beneath it. Net petticoats are attached. The back opening has a waist stay and 2 metal zippers. The bodice is lined. The **coat** has 3/4 length sleeves, a white mink collar, white satin lining, and a hook and eye closure at the neck.



Union tag



Dress opening



Beading detail

Oklahoma Fashion Museum Collection

1980s Oscar de la Renta Long Black Velvet Skirt

Category: Evening Skirt

Acquisition #71.86.7.G

Condition: Excellent

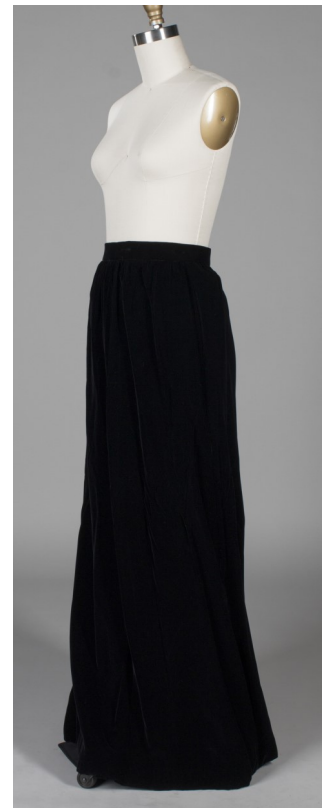
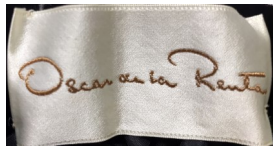
Estimated size: 10

Designer: Oscar de la Renta

Store Tag: None

Donated by: Kathryn Greenwood, July 1, 1986

Description: A long black velvet skirt with seam pockets and a side zipper. It has a long sheer slip with an elastic waist and hanging loops. The waist is 33" wide, and the skirt is 45" long.



Oklahoma Fashion Museum Collection

1970s Harold Levine Brown Sequined Evening Pants Suit

Category: Evening Pants Suit

Acquisition #73.86.22.E

Condition: Excellent

Estimated size: 8-10

Designer: Harold Levine

Store tag: Balliet's, Okla. City.

Donated by: Ann Linn, July 4, 1986

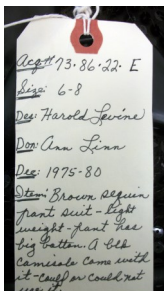
Description: A light weight brown pants suit covered with brown sequins. Both the jacket and pants are lined. The jacket has 6 round brown buttons down the front, a pointed collar, and long sleeves with cuffs. The pants have a zipper and bell bottoms. The outfit includes a long brown scarf.



Back view



Front with scarf



Sleeve cuff

Oklahoma Fashion Museum Collection

1970s Oscar de la Renta Black and Orange 3 Piece Ensemble

Category: Skirt, Jacket & Blouse

Acquisition #73.86.22.F

Condition: Excellent

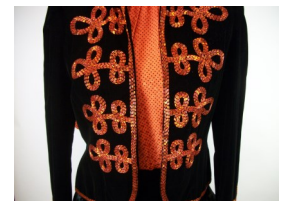
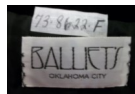
Size: 8

Designer: Oscar de La Renta

Store Tag: Balliet's, Okla. City

Donated by: Ann Linn, July 4, 1986

Description: A 3 piece black velvet and satin suit with an orange dot silk blouse. The **blouse** has 7 covered buttons in back, 2 hooks and eyes on the bottom, and snaps at the neck. There is a tie in front and the long sleeves have covered buttons. The **skirt** has a black lining, a velvet top, and a satin skirt with a size zipper. The **jacket** has orange bugle bead in the front, around the edges, on the sleeves, and in the back.



Open jacket front

Detail

73.86.22.F
 Size 8
 Oscar de la Renta
 Ann Linn
 1975-79
 Blouse: 3/4" full velvet
 - satin neck w/ 2
 orange dot silk blouse
 - orange bugle bead
 - brown blouse has tie
 at neck long sleeves

Oklahoma Fashion Museum Collection

1970s Long Gold, Red and Beige Evening Dress

Category: Evening Dress

Acquisition #73.86.22.G

Condition: Excellent

Estimated size: 8

Designer: Unknown

Store Tag: none

Donated by: Ann Linn (Oklahoma City), July 4, 1986

Description: A long gold, beige and red metallic mesh dress/formal with a matching long shoulder stole attached to a neck covering with a bow. The **dress** has bare shoulders, a V neck, a gold beaded midriff and a white lining. It opens with a back zipper with hooks at the neck and waist.



Acq # 73-86-22-G
Size: 8
Des: unknown
Don: Ann Linn
Des: 1970s
Desc: long gold & red
metallic mesh
formal-beaded
midriff, w/ long
attached stole

Oklahoma Fashion Museum Collection

1970s Bill Blass Long Black & Orange Halter Dress with Shawl

Category: Long Evening Dress

Acquisition #73.86.22.I

Condition: Excellent

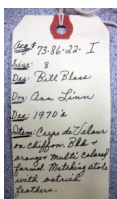
Estimated size: 8

Designer: Bill Blass

Store Tag: none

Donated by: Ann Linn, July 6, 1986

Description: Halter dress in crepe de velour on chiffon in black with large orange flower designs and green for leaves. It has a matching stole which has ostrich feathers. The dress is lined in black, has a low back with a zipper, and the neck closes with hooks and eyes.



Oklahoma Fashion Museum Collection

1970s Pauline Trigere Full Length 2 Piece Red Silk Formal

Category: Evening Gown

Acquisition #73.86.22.L

Condition: Excellent

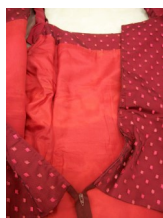
Estimated size: 10

Designer: Pauline Trigere

Store tag: Balliet's, Okla. City

Donated by: Ann Linn, July 4, 1986

Description: A 2 piece wine silk formal with a full taffeta skirt with net and dots overlay on a full sleeved bodice with a wide matching belt. The **blouse** has long puffed sleeves with elastic on the shoulders and at the wrist, red lining, and a back zipper. The **skirt** has a "front" label, a back zipper, and is lined.

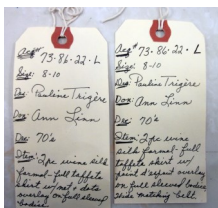


Back opening

Blouse opening



Under the skirt



Oklahoma Fashion Museum Collection

1970s Oscar de la Renta Blue Evening Gown with Pink Flowers

Category: Evening Gown

Acquisition #73.86.22.Q

Condition: Very Good

Size: 8

Designer: Oscar de la Renta

Store Tag: Balliet's Oklahoma City

Donated by: Ann Linn, July 4, 1986

Description: Evening gown in pale blue satin with a pale blue silk organza ruffles on the V neckline to the waist and at the end of the sleeves. Bodice attaches to the skirt in front with hooks and eyes, and on the left side with snaps. The skirt has large hand painted pink flowers with leaves, and the dress has a pink belt.



Side and front opening

Acq # 73.86.22. Q
 Size: 8
 Des: Oscar de la Renta
 Don: Ann Linn
 Date: 1976-80
 Item: Pale blue silk organza bodice w/ long blue satin skirt w/ floor embroidered flowers. Ruffles at neckline & wrists. Pink satin belt.



Fabric detail

Oklahoma Fashion Museum Collection

1975-77 Adolfo Gold Blouse & Black Velvet Skirt Ensemble

Category: Skirt and Blouse Ensemble

Acquisition #73.86.22.R

Condition: Fair

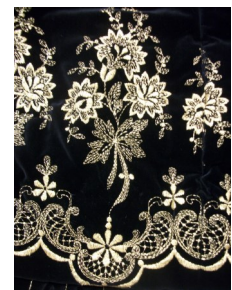
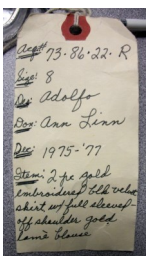
Estimated size: 8

Designer: Adolfo, New York

Store Tag: None

Donated by: Ann Linn, July 4, 1986

Description: A nice evening ensemble. The **blouse** is in gold lame', off the shoulder with long sleeves gathered at the bottom with elastic. There is a bow at the neck. The elastic needs to be replaced in the blouse. The long black velvet **skirt** is lined and padded. It has vertical gold lines from the waist down to the gold embroidered flowers on the bottom of the skirt. There are 3 hooks at the waist, and a black satin belt is attached in the back.



Embroidery detail

Oklahoma Fashion Museum Collection

1970s Geoffrey Beene Gold Evening Ensemble

Category: Cocktail Ensemble

Acquisition #73.86.22.U

Condition: Excellent

Size: 6

Designer: Geoffrey Beene

Store Tag: None

Donated by: Ann Linn, July 4, 1986

Union Tag: ILGWU

Description: A light weight evening ensemble which includes a skirt, camisole, jacket and belt in gold lame'. The **camisole** has wide shoulder straps, a square neck, and goes on over the head. The **skirt** is long and has a plaid wool trim on the bottom with lace edging. The **jacket** is in the plaid wool fabric, has long sleeves, no collar, and lace trim. The wide gold **belt** has metal hooks.



Union Tag



Skirt detail

Acq. # 73.86.22.U
 Size: 8
 Des: Geoffrey Beene
 Don: Ann Linn
 Date: late 70's
 Item: 3 pc. Matinee length cocktail outfit
 Gold lame w/ jacket
 wool trim + jacket
 lace edging on skirt +
 jacket - same belt.



Oklahoma Fashion Museum Collection

1970s-80s Oscar de la Renta White Lace Evening Ensemble

Category: Evening Ensemble

Acquisition #73.86.22.V

Condition: Excellent

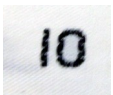
Size: 10

Designer: Oscar de la Renta

Store Tag: None

Donated by: Ann Linn, July 4, 1986

Description: A white lace ensemble which includes a long skirt, a camisole, a blouse, and a belt. The chiffon **camisole** has spaghetti straps, a back zipper and a gathered waist. The full-length **skirt** is lined, has a side opening with snaps and a metal hook, and has a scalloped hem. The lace **over blouse** has a V neck, long sleeves, scallops on the edges, no collar, and braw strap stays for the camisole. The 4-string tie on **belt** has chiffon flowers and crystal on the end.



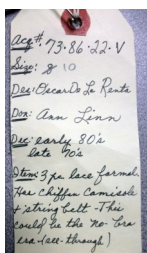
Size tag



Camisole



Belt detail on ends



Oklahoma Fashion Museum Collection

1970s Mollie Parnis Black & Silver Long Evening Gown

Category: Evening Gown

Acquisition #78.86.20.U

Condition: Excellent

Size: 12

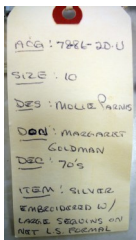
Union Tag: ILGWU

Designer: Mollie Parnis

Store tag: Mollie Parnis Boutique, NY

Donated by: Margaret "Babe" Goldman (wife of Sylvan "Syl" Nathan Goldman), August 20, 1986

Description: A black and silver long gown made of net with silver embroidered patterns all over and large silver sequins over a black lining. It has long sleeves which close with 3 snaps, a high neck, a high waist with a belt, and a back zipper.



Oklahoma Fashion Museum Collection
 1970s Brown & White Polyester Evening Jumpsuit
 by the Gilberts for Tally

Category: Evening Jumpsuit

Acquisition # 78.86.20.V

Condition: Excellent

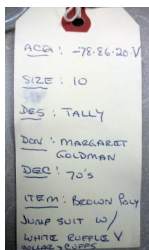
Estimated size: 10

Designer: The Gilberts for Tally

Store tag: none

Donated by: Margaret "Babe" Goldman (wife of Sylvan "Syl" Nathan Goldman), August 20, 1986

Description: A brown polyester evening jumpsuit with white ruffles in front, a white pointed collar, and turned up white cuffs on the long sleeves. It closes in front with 3 covered buttons and a zipper, and has a tie belt.



Ruffle detail



Front Opening

Oklahoma Fashion Museum Collection

1970s Bill Bliss Long Purple Silk Jersey Evening Gown with Fur

Category: Evening Dress

Acquisition #93.86.11.A

Condition: Excellent

Size: 10

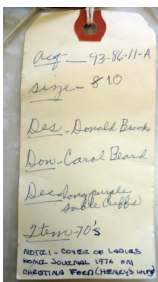
Designer: Bill Bliss

Store Tag: none

Donated by: Carol Beard, November 24, 1986

Union Tag: ILGWU

Description: A long purple evening dress with brown sable cuffs on the long sleeves. It has a V neck with an attached tie that crosses over in front, which can be tied in the front or the back. The dress has a back zipper and a waist stay.



Oklahoma Fashion Museum Collection

1970s Donald Brooks Long Beige and Cream Evening Dress

Category: Evening Dress

Acquisition #93.86.11.B

Condition: Excellent

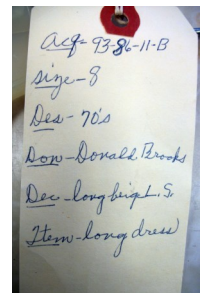
Estimated size: 8

Designer: Donald Brooks

Store Tag: Bonwit Teller

Donated by: Carol Beard, November 24, 1986

Description: A long beige dress with wide cream satin trim at the hem, on the long sleeve cuffs, at the waist, and crisscrossing the bodice in the back and front. It has a V neck in front and back with a peek-a-boo triangle at the midriff. The skirt is lined, has a zipper opening and 2 covered buttons with hooks at the waist, and the back of the bodice opens with 3 covered buttons and loops.



Oklahoma Fashion Museum Collection

1970s Donald Brooks Polyester Evening Pants Lounger

Category: Evening Lounger

Acquisition # 93.86.11.G

Condition: Good

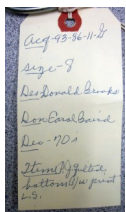
Estimated size: 8

Designer: Donald Brooks

Store tag: None

Donated by: Carol Beard, November 24, 1986

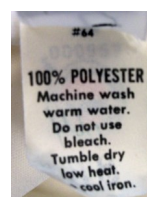
Description: A blue and white long sleeved polyester pants lounge with chicken patterns. It has a round collar, a button and loop with a hook & eye at the neck, and it's open to the waist. It's gathered at the waist and has a waist stay and a zipper at the waist in front. The cuffs have 2 covered buttons with loops. The bottom of the pants are quilted. There are some fabric stains on the outfit.



Cuff and buttons



Collar



Fabric stains

Oklahoma Fashion Museum Collection

1970s Pink & Green Chiffon Long Evening Lingerie

Category: Evening Lingerie

Condition: Excellent

Designer: Unknown

Donated by: Carol Beard, Nov. 24, 1986

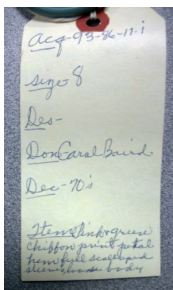
Acquisition #93.86.11.I

Size: Medium

Union Tag: ILGWU

Care tag: Dry clean only

Description: A long flowing, pink and green print chiffon print evening lingerie. It has a petal hem, full scalloped sleeves, a loose body, and a round neck with hook and eye closure. There is a cream slip underneath, and the sleeves are open underneath.



Oklahoma Fashion Museum Collection

1970s Mollie Parnis Emerald Green Evening Redingote

Category: Evening Lounge Wear

Acquisition #93.86.11.J

Condition: Very Good

Estimated size: 12

Designer: Mollie Parnis Boutique, NY

Store tag: Balliet's, Okla. City

Donated by: Carol Beard, November 24, 1986

Description: A dark green evening redingote with pants made in lurex striped chiffon material. The pants have an elastic waist, and the redingote has long sleeves, a matching fabric tie, and green and gold ostrich feathers around the neck.



Acq-93.86.11.J
Size-8 12
By Mollie Parnis
Don Carol Beard
Dec-70s
Stress at home of
lurex striped chiffon
reddingote green
ostrich/lurex

Oklahoma Fashion Museum Collection

1970s Tissu Staron Paris Full Length Green Evening Gown

Category: Evening Ball Gown

Acquisition # 93.86.11.K

Condition: Excellent

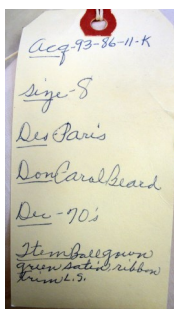
Estimated size: 8

Designer: Tissu Staron, Paris

Store tag: Lisa Meril, NY & Balliets, OKC

Donated by: Carol Beard, November 24, 1986

Description: A long green satin gown with long sleeves, a square neck and a back metal zipper. It has stripes of green, black, burgundy and white satin ribbon on the long sleeves, across the bodice, on the skirt, and around the waist with a bow at the waist. The sleeves have elastic at the wrist.



Oklahoma Fashion Museum Collection

1970s Chester Weinberg Black Satin Evening Pants Suit Ensemble

Category: Evening Pants Suit

Acquisition #98.86.22.B

Condition: Excellent

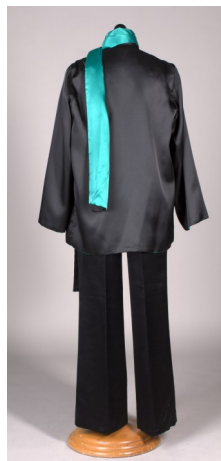
Size: 14

Designer: Chester Weinberg

Store Tag: None

Donated by: Rita Sue Frank (wife of Joe Frank), Dec. 22, 1986

Description: A black satin evening pants suit ensemble. The **pants** have an elastic waist with a front zipper and one hook & eye. A black satin sleeveless wrap **shell** is part of the ensemble and it has a tie on one side and a V neck. The **jacket** has long sleeves, jade satin lining, and an attached wide and long tie. A pair of black satin shoes with rhinestone trim on clear plastic go with this outfit (acq. #S202.16.54)



D
Acq # 98.86.22.B
Size: 12
Des: Chester Weinberg
Don: Rita Sue Frank
Mrs. Frank
Des: Early 70's
Blau: 3 pc. blk. satin
Evening jacket - wrap
shell, jacket w/ long
sleeve, pants (over)

*We have a pair
of blk. satin shoes
w/ rhinestone trim
on clear plastic to
go w/ this outfit.*



Size & Care tag

Oklahoma Fashion Museum Collection

1970s Long Black Skirt & White Blouse Evening Ensemble

Category: Skirt, Blouse & Shoes

Acquisition #98.86.22.C

Condition: Excellent

Estimated size: 12

Designer: Blouse-Joy Stevens, California; Skirt—Kasper for J.L. Sport, Ltd.

Donated by: Rita Sue Frank (wife of Joe Frank), Dec. 22, 1986

Union Tag: ILGWU



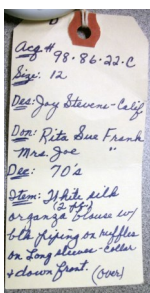
Description: This ensemble includes a skirt, blouse, and shoes. The black wool **skirt** has black lining, a front opening which fastens at the waist with 2 hooks and 2 snap, and is pleated at the front of the waist. The white silk and organza **blouse** has long sleeves with cuffs, a high neck, and a front opening with 9 small black buttons. Ruffles with black piping are around the neck, down the front and on each sleeve. Black suede high heel shoes (acq. #S202.16.27) with straps finish off this ensemble



Blouse tag



Skirt tag



Cuff Detail



Shoes S202.16.27

Oklahoma Fashion Museum Collection

1970s Norman Norell Long Black Evening Dress with Jacket

Category: Evening Dress

Acquisition #136.88.20.J

Condition: Excellent

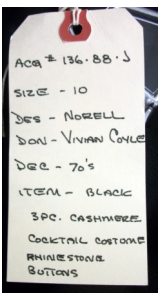
Estimated size: 10

Designer: Norman Norell

Store Tag: Balliet's, Okla. City

Owned by: Vivian Nichols Cole (wife of John W. Coyle, Sr.)

Description: A 3 piece black cashmere cocktail outfit. The long **skirt** has black lining, a front zipper with snaps and a back kick pleat. The sleeveless **shell** has a round neck, is lined, and has a back zipper. The short **jacket** has long sleeves, a notched collar, 3 rhinestone buttons in front, and is lined. Her husband donated this on June 25, 1988.



Oklahoma Fashion Museum Collection

1970s Long Black Evening Dress by Norell for I. Magnin & Co.

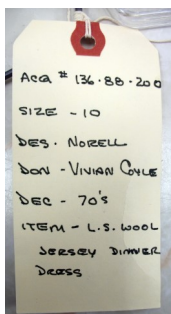
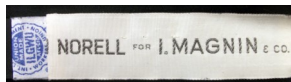
Category: Evening Dress Acquisition #136.88.20.O

Condition: Excellent Estimated size: 10

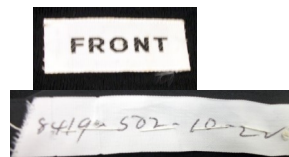
Designer: Norell for I. Magnin & Co. Store Tag: none

Owned by: Vivian Nichols Cole (wife of John W. Coyle, Sr.)

Description: A long sleeved black jersey wool dress with an attached black satin sash that snaps on over the back zipper for a side bow. The dress has a round neck, zippers on the sleeves, a lined skirt, a high waist and a slightly gathered skirt. Donated by her husband on June 25, 1988.



Back view



Inside tags



Sleeve zipper

Oklahoma Fashion Museum Collection

1970s Bianchi White Silk Full Length Evening Gown

Category: Evening Gown

Acquisition #140.88.1

Condition: Fair

Estimated Size: 6

Designer: Bianchi

Store Tag: None

Donated by: Josie Freede (wife of Henry J. Freede), August 23, 1988

Description: A sleeveless white silk shantung dress with an empire waist, and a high neck. The skirt has panels in the front and back. The dress is lined and has a back zipper. There are white beads on the neck, crossed over the front of the bodice, and on the back. There are some stains on the fabric, and some perspiration stains. This dress was the debutant dress of the donor's daughter.



Acq. # 140.88.1
Size: 6
Des: Bianchi
Don: Josie Freede
(Her daughter's
debutant dress)
Des:
Stain: White silk
shantung long
sleeved dress
with 1/2 inch wide
beadwork collar



Oklahoma Fashion Museum Collection

1970s Long Black Velvet Evening Dress

Category: Evening Dress

Acquisition #142.88.12.D

Condition: Excellent

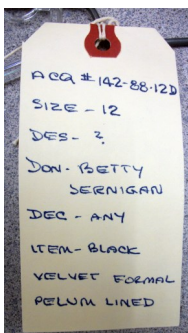
Size: 12

Designer: Unknown

Store Tag: Bullock's, Pasadena

Donated by: Betty Jernigan (wife of Ernest "Ed" Jernigan Jr.), August 25, 1988

Description: A black velvet evening dress or forma. It has a round neck, is sleeveless, has a bow at the waist and a back zipper. The skirt is peplum lined with a black net petticoat.



Store tag

Oklahoma Fashion Museum Collection

1970s Shirley Bellmon Pink & White Evening Gown and Coat

Category: Evening Gown and Coat

Acquisition # 145.88.1

Condition: Excellent

Estimated size: 10-12

Designer: Shirley Bellmon

Store tag: none

Donated by: Shirley Bellmon (wife of Gov. Henry Bellmon), September 26, 1988

Description: This gown and coat was designed, and worn by Oklahoma's First Lady, Shirley Bellmon. It is a long heavy cotton summer formal with a matching coat made in white material with pink spots all over. The **dress** is sleeveless with a round neck, and empire waist on the bodice front, and a back zipper. The **coat** is fully lined in white material, has dolman sleeves, a stand up collar, an empire waist, and closes in the front with 3 large pink buttons.



Acq # 145-88-1
Date: 10-12
Des: Shirley Bellmon
Des: Mrs 1st Lady
Shirley Bellmon
Des: 70s
Notes: Ring 2 pc.
Bottom summer
Formal white w/
pink spots, dress
12/10/88

Acq # 145
Long matching
coat w/ stand
sleeve / 3 big pink
buttons.

Oklahoma Fashion Museum Collection

1970s Full Length Red Evening Gown by Rizkallah for Malcolm Star

Category: Evening Gown

Acquisition #147.88.1

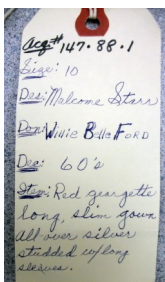
Condition: Excellent

Estimated Size: 10

Designer: Rizkallah for Malcolm Star

Donated by: Willie Belle Ford (wife of Clarence Ford), October 27, 1988

Description: Red georgette long evening gown with long sleeves, a high neck, and silver studded designs. Bodice has a nude lining and the dress has red lining. Fastens with a waist stay, a back zipper, and hooks and eyes on the neck closure.



Back opening

Oklahoma Fashion Museum Collection

1970s Mary McFadden Green and Yellow Evening Ensemble

Category: Evening Ensemble

Acquisition # 172.90.1

Condition: Excellent

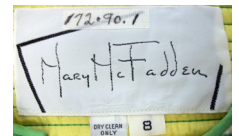
Estimated size: 8

Designer: Mary McFadden

Store tag: none

Donated by: Betty Jackson (wife of William R. Jackson), November 17, 1990

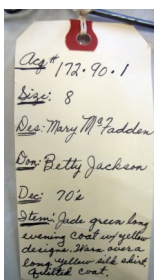
Description: This evening ensemble includes a long coat and a skirt. The bright yellow silk **skirt** is lined, has a gathered waist and a zipper with a hook & eye. The long **coat** is quilted horizontally in a jade green fabric with a white border at the hem. It has a yellow, orange and white design on the left side, front and back. The front opening has 6 hook & eye closers with covered loops. The coat has 2 seam pockets and yellow lining.



C oat design



Yellow Skirt



Oklahoma Fashion Museum Collection

1970s Black Silk Chiffon Print Lounge Wear by Martha

Category: Evening Lounge Wear

Acquisition #183.91.12.F

Condition: Excellent

Estimated size: 8-10

Designer: Martha

Store Tag: none

Donated by: June Durland (wife of Jack Raymond Durland), August 20, 1991

Description: A black silk chiffon lounge wear with multi-colored flowers hand printed on the fabric. It has long, flowing sheer sleeves to look like a scarf, a deep V neck with a front zipper, bell bottom legs, and a wide self belt with 5 covered buttons and loops.



Photo by Jacob Newton

Acq# 183.91.12.F
Size: 6-8 8-10
Des: Bought at Martha's
Des: June Durland
Des: early 70s
Stem: black silk
chiffon print pajama
Multi-colored flowers
hand printed on fabric
Open flowing sleeves
to look like a scarf
Self belt, Bell-bottom
pajama

183.91.12.F
Martha



Belt

Oklahoma Fashion Museum Collection

1970s-80s Oscar de la Renta Blue & White Full Length Dress

Category: Dress

Acquisition #201.16.20

Condition: Good

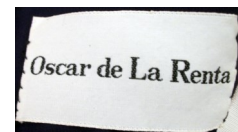
Estimated size: 10-12

Designer: Oscar de la Renta

Store Tag: Balliet's, Oklahoma City

Donated by: Unknown, found in the collection

Description: A long dress in navy blue fabric with white designs and a wide navy blue belt. It has long sleeves, a gathered skirt, a round neck with no collar, and a back zipper with a hook and eye at the top. The skirt has 3 layers and the bodice has a built in bra. The sleeves and back are a single sheer layer of fabric. The bra portion has some stains, and there are a few tears on the skirt.



Belt buckle



Built in bra

1980s

Long Evening Wear

Oklahoma Fashion Museum Collection

1980s Tally Boutique Black Taffeta & Lace Evening Pants Ensemble

Category: Evening Pants Outfit

Acquisition #33.85.3.A

Condition: Excellent

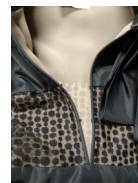
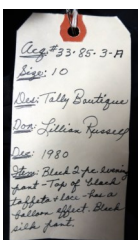
Estimated size: 10

Designer: Tally Boutique

Store Tag: None

Donated by: Lillian Russell, Oct. 12, 1985 (wife of Jack Russell)

Description: A two piece black evening suit with a black taffeta lace top with a balloon effect, and a pair of black silk pants. The **blouse** has sheer nude lining, long sleeves with a closed cuffs, a front slit opening with 3 hooks & eyes, a mandarin collar with black lace attached. It also has a big black bow at the neck which snaps on an off, and the hem has elastic around the bottom. The silk **pants** have pleats in the front, side pockets, a front zipper, and 2 buttons in front—dry clean only.



Front opening with, and without bow



Fabric detail

Oklahoma Fashion Museum Collection

1980s Halston IV White Polyester Evening Dress

Category: Evening Gown

Acquisition #58.86.24.S

Condition: Excellent

Size: 5

Designer: Halston IV

Store tag: none

Owned by: Hazel "Carrol" McLemore Loving (wife of William Albert Loving), Feb. 6, 1986

Description: A white polyester long evening dress which is draped off one shoulder, and the opposite shoulder being bare. Donated by Pat Schweinsbert, daughter of Carrol Loving.

HALSTON IV



D
 Acq# 58.86.24.S
 Date: Feb 28
 Des: Halston IV
 Don: Carrol Loving
 Size: 70s
 Desc: White polyester
 long evening dress
 Draped off-
 shoulder.

lot
 WASH-GENTLE
 USE CHLORINE
 BLEACH
 DRY-LOW

List of Designers

Designer Name	Pages
Bess Schlauk, Beverly Hills, CA	34
Ares	75
Adolfo, NY	124
Arnold Scassi	69, 70
Bianchi	140
Bill Blass	121, 129
Ceil Chapman	38, 51
Charles Cooper	56
Chester Weinberg	135
Countess Alexander, NY	79
De Michel Originals of California	28
Donald Brooks	130, 131
Edward Molyneux	4
Eisenberg & Sons Original	24
Eres-Couture	62
Estevez	101
Geoffrey Beene	54, 107, 125
Gilberts for Tally	128
Halston	108
Halston IV	109, 149
Harold Levine	118
Harvey Bevin designed by Karen Stark	33, 63, 78
Hattie Carnegie	26
Helen Rose	113
Helena Barbieri Original	116
Herbert Latimer for Irene	67
Jacques Fath designs for Joseph Halpert	45
James Galanos	71
Jill Richards	112, 114
Jobere by Morty Sussman	83
John MacDougall	55
Joy Stevens	136
Kasper for J.L. sort, Ltd.	136
Liz Berg for Bernie Bee, NY	88
Malcolm Start	52
Mardi Gras, NY	85
Martha	64, 93, 145
Mary McFadden	144
Mollie Parnis	127, 133

List of Designers

Designer Name	Pages
Mr. Blackwell	82
Neal McClintock	60
Nettie Rosenstein	29
Norell for I. Magnin & Co.	139
Norman Norell	87, 89, 97, 138
Original by Miss America	32
Original by Rudolf	46
Oscar de la Renta	95, 104, 105, 117, 119, 123, 126, 146
Paganne Ltd. by Gene Berk	49
Pattullo-Jo Copeland	102
Pauline Trigere	68, 74, 122
Peer	39
Rebecca, California	72
Ric McClintock	106
Rizkallah for Malcolm Star	143
Robert Rosenfeld Original	84
Roger Milot for Fed Perlberg	90
Ronald Amey	96, 97
Rosalie MaCrini, NY	80
Rudi Gernreich for Bob Cunningham	110
Saba, California	61
Shirley Bellmon	142
Sophie of Saks 5th Avenue	41
Tee-ca, New York	50
Tissu Staron Paris	134
Travilla	53
Victoria Royal Ltd.	81
Young America by Oleg Cassini	86
Zanda Rhodes	98
ZiZi International	115

Evening Gown Donors

List of Donors

Adams, Catherine Gurley (wife of Lynn “Sandy” Adams)

She was a supporter of the arts and was vice-president of the Okla. City Art Center, and headed the Speaker’s Bureau for the Women’s Committee of the Oklahoma City Symphony Orchestra. She was inducted into the City’s Fashion Hall of Fame. Her husband worked for Kerr-McGee and was head of the Trust Dept. at Citizen’s National Bank.

Beard, Carol - *no information currently available*

Bellmon, Shirley (wife of Gov. Henry Louis Bellmon)

She was a First Lady of Oklahoma and was also a member of the OKC Fashion Group. Her husband was a governor of Oklahoma.

Bohnard, Mary Lou

She was a buyer for John A. Brown’s upscale women’s wear department.

Burns, Ellen Evans (donated by Libby Burns) – *no other information current available*

Cabell, Helen – *no other information current available*

Champlin, Jane Edwards (wife of Joe N. Champlin) from Enid, OK

She was involved in a multitude of local arts, education, and social service organizations. Her husband, son of H.H. Champlin, was the founder of the Champlin Refining Co.

Champlain, Joanna Marie

She is the daughter of Joe Noble and Jane Edwards Champlin and lives in Oklahoma City. The family is part of the Champlin oil company.

Coe, Elizabeth M. (wife of Charles R. Bucket” Coe)

Her husband was an amateur golfer nationally and internationally.

Coyle, Vivian Nichols (wife of John W. Coyle, Sr.)

Her mother was Alma Nichols, wife of Gilbert C. Nichols who developed Nichols Hills in Oklahoma City.

Darling, Mary Lou Bernard (wife of Charles Darling)

She was a fashion buy at Higbee’s in Cleveland, Kaufman’s in Pittsburg, and Gimbels in Philadelphia. In 1973 she moved to Okla. City and became the buyer of John A. Brown’s upscale Women’s Wear Dept.

Dulaney, Virginia Piersol (wife of Luther T. Dulaney) donated by Tom & Sylvia Dulaney

She was a trustee of Okla. City University and the Cowboy Hall of Fame.

Durland, June Kathryn Cain (wife of Jack Raymond Durland)

Her father founded the Cain’s Coffee Company. Her husband was a lawyer. She and her husband owned an art gallery in Nichols Hills in Okla. City.

Evening Gown Donors

Earp, Lillian Mary Tidman (wife of Ancel Earp, Sr.)

Ellen was very involved in the arts as was her husband. He was a geologist and worked in the oil business. He was an avid art lover and collector.

Fellers, Margaret Ellen “Randy” Randerson (wife of James “Jimmy” D. Fellers)

She was a columnist in Oklahoma City for the Friday Newspaper. He was a lawyer in Okla. City.

Ford, Willie Belle Danbenspeck (wife of Clarence Ford)

Her husband founded the Ford Distributing Company.

Frank, Rita Sue (wife of Joe Frank)

She and her husband owned Joe Frank, Inc., a men’s clothing store in Nichols Hills Plaza in Okla. City.

Frates, Mex L. (wife of Clifford L. Frates)

She was inducted into the Oklahoma Hall of Fame in recognition of her humanitarian and community service. Her husband established the C. Frates & Co, Insurance and Bonds in Oklahoma City. He was also past president of several construction companies in Muskogee, Okla.

Frazier, Ruth Frances Logan (wife of Jay Frazier)

She was a homemaker, and was invited to go to Washington, D.C. as one of 100 delegates to advise builders, manufacturers and designers on what homemakers wanted. Her husband was a prominent insurance man in Okla. City. He was in the army air corp and was an electrical engineer.

Freede, Josephine “Josie” (wife of Henry J. Freede, M.D.)

She was a founding member of the “Annie Oakley Society” and helped start the National Cowboy and Western Heritage Museum in Oklahoma City.

Goldman, Margaret Katz “Babe” (wife of Sylan “Syl” Nathan Goldman)

She was the daughter of the founder of Katz Department Store in Stillwater, Okla. Her husband was the inventor of the shopping cart.

Highley, Lorene Rush (wife of Fred A. Highley)

She was an artist and business woman. She and her husband established the F.A. Highley Company in 1946.

Hightower, Dannie Bea James (wife of Frank Johnson Hightower)

Her father owned and operated the Skirvin Hotel and Skirvin Towers. She and her husband were major supporters of the Oklahoma City Philharmonic, Oklahoma Arts Center, Allied Arts, World Neighbors, Children’s Medical Research, and the Festival of the Arts.

Evening Gown Donors

Hildreth, Julia (wife of Vern Paul Hildreth)

She and her husband were supporters of the Oklahoma Symphony Orchestra and the Oklahoma Art Center. He established Midwest Jewelry, Inc.

Ivins, Dorothy (wife of Drayton Walford Ivins, Jr.)

She was a free-lance fashion illustrator who began the "Dorothy Ivins Advertising Studio" in Oklahoma City. She was a free-lance fashion illustrator who began the "Dorothy Ivins Advertising Studio" in Oklahoma City. She was a supporter of the arts and was vice-president of the Okla. City Art Center, and headed the Speaker's Bureau for the Women's Committee of the Oklahoma City Symphony Orchestra. She was inducted into the City's Fashion Hall of Fame. Her husband worked for Kerr-McGee and was head of the Trust Dept. at Citizen's National Bank.

Jackson, Betty (wife of William. R. Jackson)

Jernigan, Betty Baker (wife of Ernest Deloy Jernigan, Jr.) from Chickasha, Okla.

She was from Chickasha, Okla. and her husband was in the Air Force.

Junker, Jane Asher (wife of Canon Curtis W.V. Junker)

Her husband was a canon in the Episcopal Church.

Knotts, June Buckner (wife of Max L. Knotts)

She was an artist in Okla. City and volunteered in many organizations. She helped manage one of the first Decorators Showcase Homes for the benefit of the Oklahoma City Symphony, and started and managed the gift shop for the Oklahoma Museum of art. He was an engineer and worked for Oklahoma Natural Gas.

Linn, Ann A. (divorced from James "Jimmy" Paul Linn, an OKC lawyer)

She was married to a prominent lawyer in Oklahoma City who was involved in energy and real estate investments. They lived in Nichols Hills in Oklahoma City.

Loving, Hazel Carrol McLemore (wife of William Albert Loving)

She was President of Love and Loving Trucks in Oklahoma City in the 1930s. In the 1940s she bought out the business after a divorce and ran the business as Loving Trucklines. She was a nominee in 1982 for the Oklahoma Hall of Fame.

Morris, Virginia G. (wife of William Butler "Buck" Morris)

Her husband was a businessman and was involved with Morris Investment Co., and Morris Chevrolet.

Nicholson, Kathleen (wife of V.S. Nicholson)- no information currently available

Evening Gown Donors

Randle, “Nelle” Nellie Florence Goodner (wife of Rivers McFerrin Randle)

She was a teacher, and was active in the Methodist churches in Oklahoma and she conducted teacher training schools in surrounding states. She was active in many organization, taught piano, published a book of poetry and painted. It is unknown at this time what profession her husband was in.

Redd, Mrs. C.K. – *no information is currently available.*

Reimer, Cindy– *no information is currently available.*

Rodgers, Jane (wife of Leo M. “Buddy” Rodgers Jr.)

Her husband came to Oklahoma City, 1954 and was the Executive Vice President of Kerr’s Department Store. In 1967 he purchased a women’s fashion store and opened up what is now called Balliet’s in Oklahoma City. He continuously sponsored the annual Oklahoma City Symphony Opera Luncheon and Style Show by bringing world-renowed designer.

Rooney, Onez Norman Gloyd (1st husband Samuel Moses Gloyd, and 2nd husband William Aloysius “Pat” Rooney)

Her first husband was Samuel Moses Gloyd (1865-1955). He was previously married to Mary Elizabeth (1874-1935). After his wife died he married Onez Norman. He owned several lumberyards in Oklahoma, Kansas & Missouri. He owned the Texas Cement & Plater Co. in Texas, and had oil interests in Texas and New Mexico. Samuel died in 1955.

Her second husband was William Aloysius “Pat” Rooney (1891-1987). He was a retired can company district sales manager. She had several oil leases and mineral rights

Sanders, Peggy Jeanne Ford (wife of Millard W. Sanders)

Her husband was in the air conditioning business for homes and buildings. In 1966 he became the Thermo-Kind dealer for the eastern part of the state.

Thomas, Sarah – *no information is currently available*

University of Central Oklahoma

Some of the clothes in this collection were donated by UCO. The items belonged to students, who left them on campus and never claimed them.

Vaughan, Mr. Haywood (from Ardmore, OK)

Mr. Vaughn was very involved with Ardmore Little Theatre in Ardmore, Okla. He donated many items to the collection, both antique and vintage.

Westheimer, Ellen Louise Woods (wife of Jerome “Jerry” Max Westheimer) Ardmore, Okla

Ellen was very involved in the arts as was her husband. He was a geologist and worked in the oil business. He was an avid art lover and collector.

Evening Gown Donors

Wilson, Mary Frances Abel (wife of Tom B. Wilson)

She was involved with the DAR, the Rotary Anns, and other organizations. Her husband was employed by Victor L. Phillips Co., and later worked at Clarence L. Boyd & Dahlgren Construction.

Zapffe, Nina Byrom Fessler (wife of Fred Zapffe, Norman, Okla.)

She taught English, speech and latin for 7 years, then became the secretary and bookkeeper for her husband, a natural gas consulting engineer. Her husband worked for Lone Star Gas Co. in Dallas for 21 years. In 1961 he moved to Oklahoma city and joined Foor Engineering Co.