

# Casual Pant Ensembles, Skirt & Top Ensembles, Sportswear and World War II Uniforms



Pant Ensembles

Skirt and Top Ensembles



Riding Habit

Ski Suit

Bathing Suit

World War II Uniforms

in the  
Oklahoma Fashion Museum Collection  
at the  
University of Central Oklahoma

Compiled and written by Mary Huffman, Coordinator of Grants & Contracts

College of Education & Professional Studies

## **Forward by Mary Huffman**

### **History of the Collection**

In the late 1950s, several prominent Oklahoma City women in fashion-related businesses initiated contacts with The Fashion Group International, Inc. headquartered in New York. As a result, a new regional “Fashion Group, Inc. of Oklahoma City (OKC Fashion Group)” was established in the fall of 1958.

One of the goals of the OKC Fashion Group was to collect garments in order to establish a “designer costume collection” covering several decades and representing significant changes in fashion design. They collected garments and accessories from prominent women in Oklahoma. The collection was to be used by fashion marketing, costume design, drama, art, and history students. The items in the collection range from the late 1800s to the 1970s.

The group began collecting designer garments in 1984. In 1985 Lillian Russell began cataloging each item in a ledger. The ledger was hand written, and each clothing item had a hand written tag on it with some basic information. (A copy of the original acquisition tag is included on the following pages.)

In 1989, the OKC Fashion Group disbanded and donated the entire collection to Central State University, which is now called the University of Central Oklahoma (UCO). Even though the group disbanded, the ledger was maintained through July of 1994. The collection consists of over 800 items of clothing, 300+ hats, 151 pairs of shoes, 12 pairs of boots, 50+ purses, some jewelry and gloves.

The collection was kept in storage for many years and used occasionally for class instruction in the fashion marketing program. In 2014, I began the task of inventorying the collection, documenting details of each item and photographing some of the items and details. Most of the photos in this catalog were taken by fashion photography students.

It is now 2019 and everything has been photographed, documented and inventoried. It is my sincere hope that others will find this information helpful. Whether you’re interested in fashion design, fashion history, women’s history, the history of Oklahoma City, or are researching the people in the societal world, there is something in this catalog for many to use.

### **Catalog Arrangement**

The following pages are arranged by category, by decade, and then numerically by the acquisition numbers. As each person donated these garments, each item was given a unique number. If they gave more than one item at a time, then a letter (a, b, c, d, etc.) was added to the numeric numbers. As you look through this catalog there are some items which have the same number but different letters at the end. You can get a “feel” for the particular style a person liked by looking at the items they donated.

This catalog contains:

- 23 casual pant ensembles from the 1960s-70s

- 18 skirt and top ensemble from the 1950s through the 1970s
- 2 riding habits and 2 pair of riding pants
- 1 ski suit
- 2 bathing suits, and
- 5 World War II uniforms

Twenty five (25) designers are represented including Calvin Klein, Diane von Furstenberg, Pauline Trigere, and Ralph Loren among others. A list of the designers represented and the page(s) their designs can be found on are included in the back.

One question I'm often asked is who donated the clothes. Thanks to Lillian Russell, who originally collected the garments and logged each item in the collection with the donor names, we have a list of the donors and the date they donated the items. Twenty five people donated the items in this catalog. I've included a list of the donors of the items in this catalog with a little bit of information I have been able to find out about them, or their spouses. It's interesting to look back in time and not only see the items the women wore, but also to learn more about them as a person.

Many of the women were in the fashion business in some capacity, and many of the husbands were in the oil & gas industries, banking, law firms, fashion, and many other professions. Included in this book is a list of the women who donated their clothes as well as their husband's name (if known) and a brief description. It's kind of a "Who's Who" in Oklahoma City during this time period.

On each page is included the condition, designer (if known), the acquisition # and the size. Also included, if available, are pictures of any tags found inside the garment, and pictures of the original inventory tag that Lillian Russell wrote. In some instances I've included detail pictures of designs, fabric, or damage. A description of each item is also included. The information for the descriptions came from Lillian Russell's inventory tag, my physical assessment of each item, research on the designers, fabrics, and terms used when describing clothing. I hope this information is helpful for others.

The studio photographs were taken in the photography studio in the Mass Communications Building on the UCO campus under the direction of Mr. Jesse Miller, a professor of fashion photography. The student photographers were Kelsey Smith and Zach Hunter. These students were hired through a U.S. Department of Education grant called "Student Transformative Learning Record" (STLR) for this project. Some of the photos I took before the photography studio was available.

Whether you're researching particular designers, styles, people, or fashion history, I hope the information in this catalog will be of interest to others in various professions.

Mary Huffman, Coordinator of Grants & Contracts  
 College of Education & Professional Studies  
 University of Central Oklahoma  
 Edmond, Oklahoma  
 October, 2019

## Table of Contents

<b>Casual Pant Ensembles</b>		<b>Page</b>
<b>1960s</b>	13.85.25.H Light green ensemble by Dalton.....	2
	57.86.14.L Orange & ecru pants ensemble by Internationale Set.....	3
	72.86.5.B Pink blouse and pants ensemble.....	4
	74.86.21.O Gold suede pants and coat with fur trim.....	5
	75.86.16.I Denim jeans ensemble with appliques.....	6
	96.86.2.A Grey knit pants & sweater ensemble by Alex Coleman.....	7
	98.86.22.U Blue silk pants suit by Emilio Pucci.....	8
	103.87.12.A Green herringbone 3 piece suit ensemble.....	9
	103.87.12.J Green pants and sweater ensemble by Alex Coleman.....	10
	103.87.12.K Teal polyester pants suit ensemble by Act III.....	11
<b>1970s</b>	25.85.5.A Red print chiffon long pajama pants by Arendine.....	13
	59.86.6.D Blue wool jersey pants suit by Pauline Trigere.....	14
	72.86.5.A Pink pants suit ensemble by Guinnessa.....	15
	74.86.21.L Woven silk pants suit ensemble by Ronald Amey.....	16
	75.86.16.A Grey pants by Calvin Klein with jacket by Ralph Loren.....	17
	75.86.16.D Grey wool jumpsuit by Calvin Klein.....	18
	98.86.22.L White & brown pants suit ensemble by Beene Bag.....	19
	98.86.22.N Brown plaid wool pants suit by Calvin Klein.....	20
	98.86.22.O Green & white blouse with white pants ensemble.....	21
	98.86.22.P Brown tweed jacket & brown flannel pants by Calvin Klein	22
	98.86.22.Q Cotton floral pants, blouse & belt by Mark Hober, Inc.....	23
	98.86.22.R Purple pants & poncho ensemble by Kimberly Knits.....	24
	98.86.22.T Green jacket & printed pants ensemble by Breckenridge.....	25
<b>Skirt and Top Ensembles</b>		<b>Page</b>
<b>1950s</b>	67.86.10.H Navy blue squaw skirt & blouse ensemble.....	27
	115.87.3.C Black & white skirt with appliques & a green top.....	28
	189.93.15.P Black cotton skirt & blouse ensemble with bric-a-brac.....	29
<b>1960s</b>	3.85.3.B Orange & brown knit skirt and top ensemble.....	31
	13.85.25.H Light green suit ensemble by Dalton.....	32
	25.85.4.B Long multicolored skirt with blue blouse.....	33
	75.86.16.J Denim skirt & jacket ensemble.....	34
	103.87.12.L Teal 3 piece skirt & blouse ensemble by Act III.....	35
	123.88.2.B Navy, blue & white skirt & blouse ensemble by Galanos....	36
	178.91.3.A Navy silk print 2 piece long skirt & top by Hanai Mori...	37
<b>1970s</b>	80.86.9.A Purple & red skirt with a red sweater.....	39
	86.86.2.A Forest green knit skirt with top ensemble by Adolfo.....	40
	124.88.1 Green & white skirt & blouse by Diane Von Furstenberg....	41
	130.88.3.A Long navy skirt & blouse with lace by Geoffrey Beene.....	42
	178.91.3.B Silk chiffon skirt & blouse ensemble.....	43
	183.91.12.J Blue & black silk skirt with blouse by Michaele Vollbrach..	44

<b>Skirt and Top Ensembles (con't)</b>		<b>Page</b>
<i>1970s</i>	192.93.2.B	Red & black skirt with red blouse ensemble..... 45
	198.94.1.A	Brown knit skirt & top ensemble by Diane Von Furstenburg.. 46

<b>Sportswear</b>	<b>Page</b>
-------------------	-------------

***Riding Habits***

42.85.2.B	1920s Brown corduroy habit.....	48
191.93.5.F	1920s Tweed wool riding habit.....	49
195.94.4.B	1930s Riding pants.....	50

***Ski Suit***

42.85.2.A	1920s Brown and plaid wool ski suit.....	51
-----------	--	----

***Bathing Suits***

201.16.21	1900-1916 Red bathing costume.....	52
195.94.4.A	Blue wool swim suit by Jantzen.....	53

***World War II Uniforms***

37.85.5.D.1	Army Corp Jacket.....	55
37.85.5.D.2	Marine uniform.....	56
158.89.2.A	Women's Army Auxiliary Corp (WAAC) Uniform.....	57
58.89.2.B	WAAC raincoat, hats & gloves.....	58
174.90.	Nurse's cape.....	59

**List of Designers**

**List of Donors**

# Casual Pant Ensembles

# 1960s

# Oklahoma Fashion Museum Collection

## 1960s Light Green Suit Ensemble by Dalton

Category: Suit Acquisition #13.85.25.H  
 Condition: Good Sizes—Sweater: 10 / Skirt, Pants, Jacket: 8  
 Designer: Dalton Mfg. Store Tag: None  
 Owner: Ellen E. Burns

Description: A 4 piece light green suit with a sweater, jacket, pants, and a skirt in 100% wool. The owner wore this with purple accessories. The **turtleneck sweater** has a back zipper and a few stains. The **skirt** is gored. The **pants** are unlined, have an elastic waist, and has some discoloration and a stain inside 1 leg. The **jacket** is lined in the back, has a collar, 2 green buttons, patch pockets, has long sleeves with no cuffs. It also has some moth holes. Donated by Libbie Burns, May 23, 1985



# Oklahoma Fashion Museum Collection

## 1960s Orange & Ecrú Pants Ensemble by Internationale Set

Category: Pants set

Acquisition #57.86.14.L

Condition: Excellent

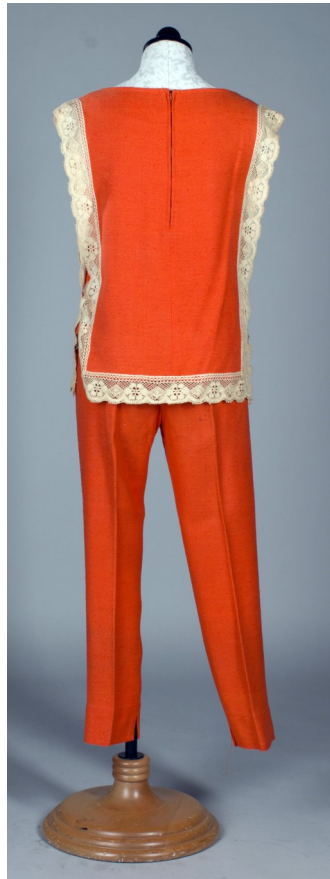
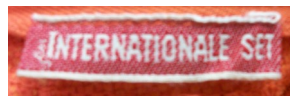
Estimated size: 6

Designer: Coordinated for my Internationale Set

Store Tag: None

Owned by: Carrol Loving (wife of William Albert Loving)

Description: A bright orange pants set in 40% rayon and 20% cotton fabric. The sleeveless **top** has ecru lace down the sides and on the bottom, a round neck, and a back zipper. The **pants** are unlined, have tapered legs, and a back zipper with a button. Donated by her daughter, Pat Schweinsberg, Feb. 6, 1986



Acq. # 57.86.14.L  
Size: 6  
Des: Internationale Set  
Des: Carrol Loving  
Dte: 60s  
Stem: Bright orange  
rayon/cotton pant set.  
Back zip top & pants  
Lace down sides &  
on bottom





# Oklahoma Fashion Museum Collection

## 1960s Pink Blouse and Pants Ensemble

Category: Separates

Acquisition #72.86.5.B

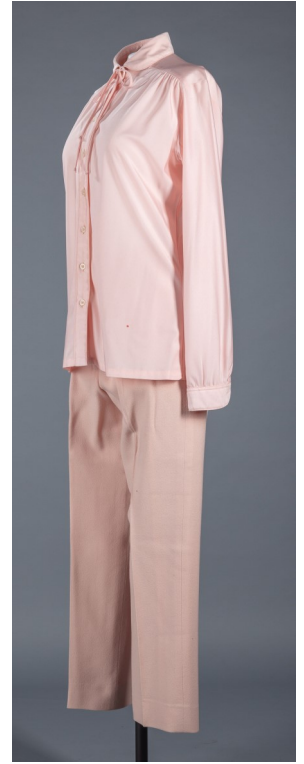
Condition: Good

Estimated size: 10-12

Designer: Pants: Bassonova / Blouse: It's Gailord

Donated by: Louise Mathews, July 1, 1986

Description: This ensemble consists of a pink blouse and pants. The **polyester blouse** is by "It's Gailord" and has 7 pink buttons down the front, a round collar, string tie and long sleeves with one button cuffs. The **wool pants** have a front zipper with a one button closure and belt loops.



Blouse and label



Pants label



*Acq. # 72.86.5.B  
 Size: 6  
 Des: Bassonova  
 Don: Louise Mathews  
 Dec: 60's  
 Item: Pink wool  
 pants w/ pink  
 blouse in July.*



# Oklahoma Fashion Museum Collection

## 1960s Gold Suede Pants and Coat with Fur Trim

Category: Pants Suit  
 Condition: Excellent  
 Designer: Unknown

Acquisition #74.86.21.O  
 Size: 10  
 Store Tag: Balliets, Inc., Okla. City

Donated by: Ann Simmons Alspaugh, July 6, 1986

Description: Gold suede pants with a matching jacket. The **pants** have an elastic waist, pockets and a side zipper. They're fully lined and have a 29" inseam. The **coat** has fox fur trim on a wide collar and on the hem. It has long sleeves, a tie belt, and is fully lined. There is some slight discoloration on the lining.



*Acq. # 74.86.21.O  
 Size: 10  
 Des: unknown - bought at Balliets  
 Des: Ann Linn  
 Des: probably 60s  
 Store: The Gold Suede  
 Pant suit, jacket  
 w/ fox fur trim  
 the matching suede  
 belt.*



Lining



Store tag

# Oklahoma Fashion Museum Collection

## 1960s Denim Jeans Ensemble with Appliques

Category: Jeans Outfit

Acquisition #75.86.16.I

Condition: Good

Estimated Size: 6-8

Inside tags: Blouse-Basking Ridge, pants: Levi Strauss; Jacket- Lee

Donated by: Arden Barrett (wife of Dr. Paul Arthur Barrett), July 10, 1986

Description: A blue jean outfit including a Lee jacket, a shirt, a pair of Levi jeans, and a belt typical of the late 1960s. The jeans and jacket are decorated with yellow and white appliques of butterflies and flowers. The long sleeve blouse is yellow and white pin stripe from Basking Ridge and a size 8. The belt is yellow velvet with bronze hands that clasp in the front. The jeans and jacket have fabric stains, and the jeans have been taken up in the waist.



Acq # 75-86-16-I  
Size: about 6-8  
Des: Arden Barrett  
Des: Arden Barrett  
Des: Kate 60s  
Blouse: 3/4 length sleeve  
yellow and white stripe  
Jacket: yellow and white  
applies - yellow stripes  
applies - yellow stripes  
applies - yellow stripes



Belt detail



Back pocket detail



Jacket front detail

# Oklahoma Fashion Museum Collection

## 1960s Grey Knit Pants & Sweater Ensemble by Alex Coleman

Category: Pants Outfit

Acquisition #96.86.2.A

Condition: Excellent

Size: 6

Designer: Alex Coleman

Union Tag: ILGWU

Donated by: Ann Lacy, Dec. 19, 1986



Description: Grey knit palazzo pants with a matching grey knit top. The **pants** have an elastic waist. The ribbed **sweater** has long sleeves and a back zipper. The high collar has 2 rows of white knit and so do the sleeve ends. The top is size 6 and is 65% acetate, 35% polyester, and can be machine washed and line dry only.



Acq# 96.86.2.A  
Size - 10  
Dec -  
Don Ann Lacy  
Dec -  
Item:  
Grey Knit  
Palazzo pants  
w/ ribbed grey  
white top



Union tag



Sweater tags

# Oklahoma Fashion Museum Collection

## 1960s Blue Silk Pants Suit by Emilio Pucci

Category: Pants Suit  
 Condition: Excellent  
 Designer: Emilio Pucci  
 Donated by: Rita Sue Frank (wife of Joe Frank), Dec. 22, 1986

Acquisition #98.86.22.U  
 Estimated size: 12  
 Store Tag: Bettina's

Description: A pants suit in 100% silk royal blue fabric. The **pants** have a 28" inseam, 28" waist, a metal size zipper with a button closure tab and a hook & eye. The **jacket** has a front opening with 5 covered buttons, and long sleeves with notched cuffs and a button.



Below are some Emilio Pucci blouses that were donated with the suit above.

D  
 Reg. # 98-86-22.U  
 Size: 12  
 Des: Emilio Pucci  
 Don: Rita Sue Frank  
 Des: 60's  
 Stem: Solid royal  
 blue shirt & pant  
 in raw silk.



201.17.42

201.17.41

201.17.24

201.17.23

# Oklahoma Fashion Museum Collection

## 1960s Green Herringbone Three Piece Suit Ensemble

Category: Outfit (3 piece)

Acquisition #103.87.12.A

Condition: Very Good

Estimated size: 8

Designer: Unknown

Donated by: Joniel "Jo" Russell (wife of Harold R. Russell of Tulsa), June 16, 1987

Description: This 3 piece "weekender" outfit is made of green herringbone wool. The outfit includes a skirt and pair of pants with a matching jacket. The **jacket** is double-breasted with 6 big green buttons on the front, 3 of which fit into 3 bound button holes. There is also a snap at the top (see detail view) It's fully lined and has 2 front pockets with flaps. The **skirt** has a back zipper and is unlined. The **pants** are also unlined and have a size zipper opening. There are no designer or manufacturer tags on any of the garments.



Acq # 103-87-12-A  
Size: 8  
Mfr: unknown  
Donor: Mrs. Harold Russell  
Date: 6-16-87  
Item: 3pc weekender  
Green herringbone  
lined by both jacket  
& matching skirt



# Oklahoma Fashion Museum Collection

## 1960s Green Pants and Sweater Ensemble by Alex Coleman

Category: Pants & Matching Sweater

Acquisition #103.87.12.J

Condition: Excellent

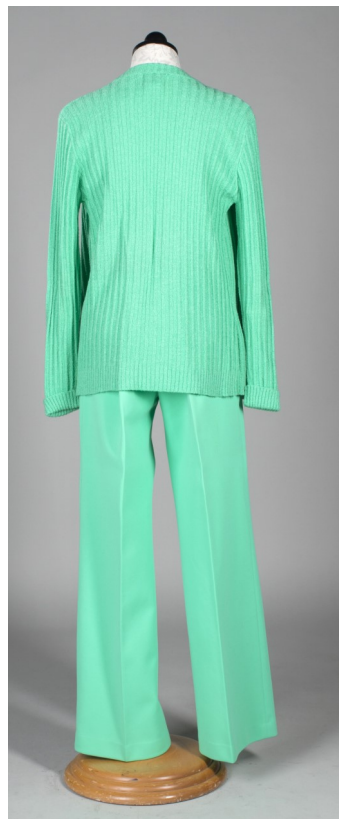
Estimated size: Large

Designer: Alex Colman, California

Store Tag: None

Donated by: Joniel "Jo" Russell (wife of Harold Russell), June 18, 1987

Description: Green pants with a matching sweater. The polyester **pants** have a front zipper with a tab and button closure. The matching colored **sweater** is 85% acrylic, 15% nylon, and was made in Taiwan. It has long sleeves and 2 pockets in the front.



Box # 103.87.12.J  
Size: 8  
Des: Alex Colman  
Donor: Mrs. Harold Russell  
(Jo)  
Des: the 60s  
Stm: Light green  
poly pants w/  
matching acrylic  
knit sweater.

MADE EXPRESSLY  
alex colman  
CALIFORNIA  
EN 10226  
85% ACRYLIC  
15% NYLON  
MADE IN TAIWAN  
L  
861

# Oklahoma Fashion Museum Collection

## 1960s Teal Polyester Pants Suit Ensemble by Act III

Category: Pants, Blouse, Jacket

Acquisition #103.87.12.K

Condition: Excellent

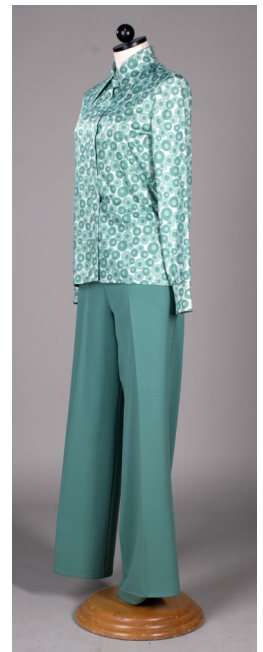
Estimated size: 14-16

Designer: Act III

Store Tag: None

Donated by: Joniel "Jo" Russell (wife of Harold Russell), June 18, 1987

Description: A 3 piece teal polyester pants suit. The **pants** are made of 100% dacron and have an elastic waist, and an ILGWU label. The **jacket** is also made of dacron and has long sleeves with turned up cuffs, 2 patch pockets, a collar, and 8 teal buttons down the front. The **blouse** is made of printed fabric with teal circle designs. It has a pointed collar, long sleeves with cuffs and 2 buttons, and 8 buttons down the front.



103.87.12.K  
Size: 14-16  
Designer: Act III  
Donated by: Harold Russell  
(Jo)  
Dec. 2002  
Blouse: 100% teal  
polyester, lined  
Patch pocket, solid  
Color: Poly cotton  
Front closure



# Casual Pant Ensembles

## 1970s

# Oklahoma Fashion Museum Collection

## 1970s Red Print Chiffon Long Pajama Pants by Arendine

Category: Evening Lounge Wear

Acquisition #25.85.4.A

Condition: Good, but broken zipper

Estimated size: 10

Designer: Arendine

Store Tag:

Donated by: Mary Lou Bohnard, October 1, 1985

Description: This ensemble consists of pants, an overblouse and 2 bras. The **pants** have a 28 inseam, wide legs, hang ties inside, and a side zipper with 1 hook & eye. The see-through **overblouse** has 7 buttons down the front, long sleeves with cuffs and 2 red buttons. A **black bra** and a **nude bra** complete this ensemble



Tag on the back of the nude bra



# Oklahoma Fashion Museum Collection

## 1970s Blue Wool Jersey Pants Suit by Pauline Trigere

Category: Pants Suit

Acquisition #59.86.6.D

Condition: Good

Estimated size: 8-10

Designer: Pauline Trigere

Store Tag: Balliet's

Donated by: Helen Strassburger Levy (wife of Harrison Levy Sr.), Feb. 18, 1986

Description: A blue wool jersey 2 piece pants suit with long sleeves and a tie belt. The **top** has a back zipper with 1 snap and a metal clasp, an attached neck scarf and long sleeves. The **pants** are unlined, have a 27" inseam, a 29" waist and a crotch guard. The fabric has some stains on the sleeves and some small moth holes.



Neckline detail

Acq# 59.86.6.D  
 Size: 8-10  
 Des: Pauline Trigere  
 Don: Mrs. Harrison Levy  
 Date: 1976  
 Blue wool jersey pants suit. Long full leg. Crotch guard. Some stains on sleeves. Some small moth holes.

# Oklahoma Fashion Museum Collection

## 1970s Pink Pants Suit Ensemble by Guinness

Category: Pants Suit  
 Condition: Very Good  
 Designer: Guinness  
 Donated by: Louise Matthews, July 1, 1986

Acquisition #72.86.5.A  
 Estimated size: 4  
 Store tag: None

Description: A pink leather-look pants suit made of 75% vinyl and 20% cotton. The outfit has a sweater, pants, a jacket and a tie belt. The **sweater** has a high neck and long sleeves. The **pants** have a sewn crease on the front of the legs, a front zipper and a metal clasp and button closing. The **Jacket** is quilted on the front, and the back, has long sleeves, and 6 pink buttons down the front.. This outfit was made in the British Crown Colony of Hong Kong.



*Ref # 72.86.5.A  
 Size: 6 short  
 by Guinness  
 by Louise Matthews  
 1970s  
 3 piece pants suit  
 in pink leather look  
 in pants & jacket.  
 Matching pink sweater.  
 Fabric is 75% vinyl &  
 25% cotton.*



# Oklahoma Fashion Museum Collection

## 1975-79 Woven Silk Pants Suit Ensemble by Ronald Amey

Category: Pants Suit

Acquisition #74.86.21.L

Condition: Excellent

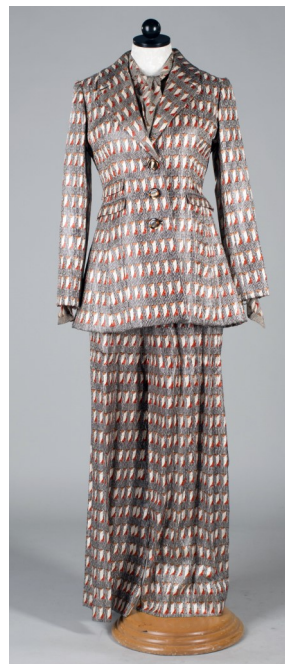
Estimated size: 10

Designer: Ronald Amey

Store Tag: None

Donated by: Ann Simmons Alspaugh, July 6, 1986

Description: A rare 3 piece pants suite ensemble in woven silk jacquard. The base color is grey with coral and beige designs. The **pants** have a front zipper opening with a button. The long sleeved matching **blouse** has a back zipper, a wide attached tie, cuffs with 3 coral buttons and a button at the back of the neck.



Acq # 74.86.21.L  
Size: 10  
Des: Ronald Amey  
Don: Ann Simms  
Dec: 1975-'79  
Notes: 3 pc woven  
silk jacquard pant  
suit. Base color is  
grey w/ coral &  
beige designs.  
Blouse w/ companion  
fabric.

## Oklahoma Fashion Museum Collection

### 1970s Grey Pants by Calvin Klein with Jacket by Ralph Lauren & Cream Blouse

Category: Pants Ensemble

Acquisition #75.86.16.A

Condition: Excellent

Sizes: Pants and blouse, 6

Designers: Calvin Klein; Ralph Lauren

Jacket size 10

Donated by: Arden Barrett (wife of Paul Arthur Barrett), July 10, 1986

Description: Grey wool pants, a grey tweed jacket and a cream satin striped blouse make up this pants ensemble. The Calvin Klein **pants** are unlined, have a front zipper with 1 button closure, belt loops, pockets, a 31" inseam and a 26" waist. The **blouse** has a front opening with 6 buttons under the facing, an attached long scarf with 2 snaps at the neck, and fold over cuffs on the long sleeves with 1 button on each side. The Ralph Lauren **jacket** has a collar, 3 front pockets and 1 inside pocket with a button, 3 leather buttons in front and 4 smaller ones on the long sleeves, and suede elbow patches. It's tailored and has black lining.



Jacket lining



Sleeve buttons



Cuff detail



*Legs 75, 86, 16" H*  
*Size: Small 6*  
*Des: Calvin Klein pants*  
*Ralph Lauren jacket*  
*Des: Arden Barrett*  
*Des: approx 1974*  
*Blouse: 3/4" grey stripes*  
*front w/ button at elbow*  
*long over front - cream*  
*satin stripe blouse*  
*w/ long sleeve & tie*  
*button*

*view of large*  
*scarf & hat (not*  
*shown)*

# Oklahoma Fashion Museum Collection

## 1970s Grey Wool Jumpsuit by Calvin Klein

Category: Jumpsuit  
Condition: Excellent  
Designer: Calvin Klein  
Donated by: Arden Barrett (wife of Dr. Paul Arthur Barrett), July 10, 1986

Acquisition #75.86.16.D  
Estimated size: 4  
Store Tag: None

Description: A grey wool jumpsuit with long sleeves, cuffs with one button, a collar, and a front opening. It has 4 patch pockets with flaps and buttons, 2 on the bodice and 2 on the pants. A black leather belt finishes off this unlined jumpsuit.



Acq. # 75.86.16.D  
Size: 4  
Des: Calvin Klein  
Don: Arden Barrett  
Des: early 70's  
Item: Grey wool  
jumpsuit w/ belt  
leather belt & 4  
pockets w/ buttons

# Oklahoma Fashion Museum Collection

## 1970s White & Brown Pants Suit Ensemble by Beene Bag

Category: Pants with Two Blouses

Acquisition #98.86.22.L

Condition: Very Good

Size: 12

Designer: Beene Bag (brown blouse)

Store Tag: I. Magnin (brown blouse)

Donated by: Rita Sue Frank (wife of Joe Frank), Dec. 22, 1986

Description: A pants suit ensemble with pants, a blouse and an over blouse. The cream satin palazzo pants have a drawstring tie at the waist. The matching **cream satin blouse** has a collar, a front V opening, 3/4 komono sleeves with a wide hem and pockets. A big **brown blouse** also goes with the pants. It has long sleeves, a corded draw tie at the neck with a V opening.



D  
Acq# 98.86.22.L  
Size: 12  
Des: Beene Bag  
Don: Rita Sue Frank  
Dec: 70's  
Stem: Cream satin  
Palazzo pant w/  
drawstring tie at waist  
also has brown  
cord tie at waist  
blouse.





# Oklahoma Fashion Museum Collection

## 1970s Brown Plaid Wool Pants Suit by Calvin Klein

Category: Pants Suit

Acquisition #98.86.22.N

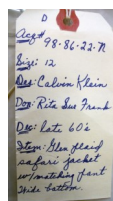
Condition: Excellent

Estimated Size: 12

Designer: Calvin Klein

Donated by: Rita Sue Frank (wife of Joe Frank), Dec. 22, 1986

Description: A black, white, and red plaid wool pants suit with a safari jacket. The **pants** have a front zipper with a brown button and is lined. The **jacket** has a pointed collar, long sleeves with 2 buttons on the cuff, 2 front breast pockets with flaps and 2 buttons, and opens in the front with 5 buttons.



# Oklahoma Fashion Museum Collection

## 1970s Green & White Blouse with White Pants Ensemble

Category: Pants, Blouse, Belt & Shoes

Acquisition #98.86.22.O

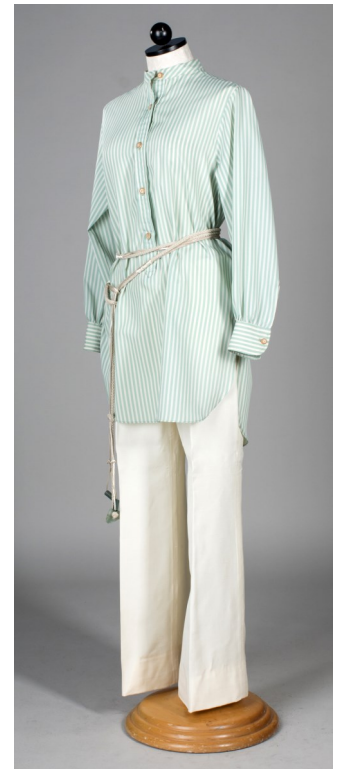
Condition: Excellent

Size: 10

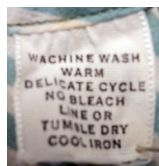
Designer: Pants-Lasserre Couture Sport, made in France; Blouse—Beene Bazaar

Donated by: Rita Sue Frank (wife of Joe Frank), Dec. 22, 1986

Description: The white **pants** in this ensemble are 96% rayon, 4% silk and were made in France. They have a 28" inseam, wide legs, belt loops, and are dry clean only. The long **blouse** is in green & white striped fabric with long cuffed sleeves and a front facing opening with 5 brown buttons. Accessories include a long string **belt** with green ornaments, and green leather open-toed **shoes** (acq. #S202.16.63) which were made in Italy.



D  
Acq #98.86.22.O  
Size: 10  
Des: Geoffrey Beene  
Don: Rita Sue Frank  
Dec: early 70s  
Blouse: green & white strip  
Long top, w/ white  
with front seam  
leather shoes w/ cork  
shoelaces & heels  
long string belt w/  
green ornaments



Blouse care tag



Blouse tag



Pants tag



Shoes #S202.16.63

# Oklahoma Fashion Museum Collection

## 1970s Brown Tweed Jacket & Brown Flannel Pants by Calvin Klein

Category: Pants and Jacket

Acquisition #98.86.22.P

Condition: Excellent

Estimated size: 12

Designer: Calvin Klein

Store Tag: None

Donated by: Rita Sue Frank (wife of Joe Frank), Dec. 22, 1986

Description: This ensemble has some solid brown flannel pants, and a striped tweed zip jacket with a hood. The **pants** have a rust colored lining, a front zipper with a 1 button tab closure, a 32" inseam and a 30.5" waist. The tan **jacket** opens in the front with a zipper with a brown button at the neck. It has a detachable hood with buttons, the front has 2 diagonal pockets with tabs and 1 button, and the sides have attached fabric adjustments. It has long sleeves with cuffs and 1 brown leather button.

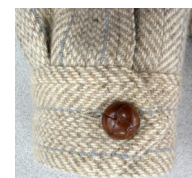


Detachable hood



Pockets and side adjustment

D  
Acq# 98.86.22.P  
Size: 12  
Des: Calvin Klein  
Don: Rita Sue Frank  
Des: early 70s  
Item: Striped tweed  
zip jacket w/ hood  
Solid brown  
flannel pant.



Cuff button

HISTORY DEPARTMENT  
PROTECT LEATHER  
BUTTONS WITH ALUMINUM  
FOIL OR REMOVE  
BUTTONS

# Oklahoma Fashion Museum Collection

## 1970s Cotton Floral Pants, Blouse & Belt by Mark Hober Inc.

Category: Pants, Matching Top & Belt

Acquisition #98.86.22.Q

Condition: Very Good

Size: 13/14

Designer: Mark Hober Inc.

Store Tag:

Donated by: Rita Sue Frank (wife of Joe Frank), Dec. 22, 1986

Description: This pants ensemble is in a white cotton print fabric with purple, pink and orange flowers with green leaves. The **blouse** has long sleeves with 2 buttons on the cuff, buttons in the front with 9 covered buttons, and a pointed collar. The **pants** are lined and have wide legs, 30 inseam, a front zipper with a metal clip, and wide belt loops. The matching **belt** has a silver colored buckle.



D  
Acq # 98.86.22.Q  
Size: 12-14  
Des: Mark Hober, Inc.  
Don: Rita Sue Frank  
Dec: early 70s  
Stem: Stylized flower  
print shirt + pant  
in cotton-matching  
belt.



# Oklahoma Fashion Museum Collection

## 1970s Purple Pants & Poncho Ensemble by Kimberly Knits

Category: Pants with Poncho

Acquisition #98.86.22.R

Condition: Excellent

Estimated size: 12

Designer: Kimberly Knits (but no tag)

Union Tag: ILGWU

Donated by: Rita Sue Frank (wife of Joe Frank), Dec. 22, 1986

Description: A purple knit pants ensemble. The **pants** have an elastic waist, a 32" inseam, and a "front center" tag. The long poncho style **jacket** has a collar, a front opening with 5 purple buttons, and 2 breast pockets.



D.  
Acq # 98.86.22.R  
Size: 12  
Des: Kimberly Knits  
Don: Rita Sue Frank  
Des: early 70s  
Item: 2 pc. purple  
pant suit - poncho  
long jacket.



Front Center tag on pants



Union tag

# Oklahoma Fashion Museum Collection

## 1970s Green Jacket & Printed Pants Ensemble by Breckenridge

Category: Pants & Jacket

Acquisition #98.86.22.T

Condition: Excellent

Estimated size: 12

Designer: Breckenridge

Store Tag: None

Donated by: Rita Sue Frank (wife of Joe Frank), Dec. 22, 1986

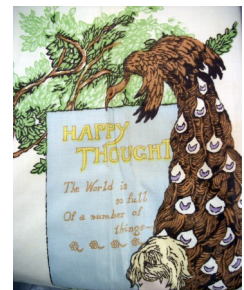
Description: This two piece outfit has a short green drawstring jacket and a novelty print pant by Breckenridge. The **jacket** has a pointed collar, a front opening with 6 green buttons and a drawstring, 2 front pockets, and long sleeves with 1 green button. It is unlined and the inside tag was cut out. The **pants** have wide legs, a yoke at the waist, white cotton lining, belt loops, a front zipper with 1 inside button and a metal clasp. The inseam is 30.5" and the waist is 30". There are some stains on the lining.



D  
 Acq. # 98-86-22-T  
 Size: 12  
 Des: Handmade Ensemble  
 (white jacket)  
 Breckenridge novelty  
 pants  
 Don: Rita Sue Frank  
 Dec: 70's  
 Item: 2 p.c. ensemble  
 consisting of a  
 green short draw  
 string jacket to be  
 worn with over



Pants yoke and front



Samples of pant's designs

Skirt and Top  
Ensembles  
1950s

# Oklahoma Fashion Museum Collection

## 1950s Navy Blue Squaw Skirt and Blouse Ensemble

Category: Skirt and blouse outfit

Acquisition #67.86.10.H

Condition: Good

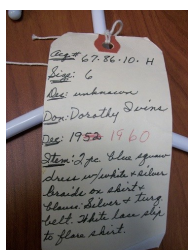
Estimated size: 6

Design: Unknown

Store Tag: Raes Colorado Springs

Donated by: Dorothy Ivins (wife of Drayton Walford Ivins, Jr.), May 3, 1986

Description: This 2 piece outfit consists of a blouse and skirt in navy blue, turquoise, silver and white. The **blouse** has a V neck opening with a collar with braid trim, 3/4 inch sleeves with trim, and a side zipper. There is braiding and bric-a-brac on the top following the V neck pattern and over the shoulders. The **skirt** also has braid and trim, but also has turquoise fabric layers in-between the navy. It has a zipper opening, and silver concho button at the opening. It was worn with a silver and turquoise metal belt.





# Oklahoma Fashion Museum Collection

## 1950s Black & White Skirt with Appliques & Green Top

Category: Skirt & Blouse

Acquisition #115.87.3.C

Condition: Fair—fabric stains

Estimated size: 10

Designer: Unknown

Store Tag: None

Donated by: Mary Rice (wife of George B. Rice), Oct. 13, 1987

Description: A 31" long **skirt** made of black and white ticking with vertical stripes is part of this ensemble. It has green and black leaf appliques attached, and 6" wide green fabric is sewn on the inside hem. A sleeveless green cotton **top** compliments the skirt. It has a scalloped neckline and scalloped armholes, and has a side opening with 4 snaps. This outfit was probably home made. The skirt has many stains on it.



Acq # 115.87.3.C  
size 10  
DES ?  
DON Mary Rice  
Dec 50's  
ITEM GREEN  
COTTON TOP W/ FRANK  
BLACK & WHT TICKING  
LEAF APPLIQUE SHEET

# Oklahoma Fashion Museum Collection

## 1950s Black Cotton Skirt & Blouse Ensemble with Bric-a-Brac

Category: Skirt and Blouse

Acquisition #189.93.15.P

Condition: Good

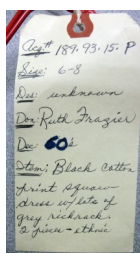
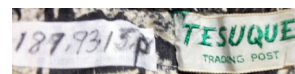
Estimated size: 6-8

Designer: Unknown

Store Tag: Tesuque Trading Post

Donated by: Frazier, Ruth Frances Logan (wife of Jay Frazier), , July 7, 1993

Description: A black cotton print squaw style ensemble with a matching skirt and blouse. The **blouse** has short puffed sleeves gathered on the end, a gathered scoop neck, and 7 rows of grey bric-a-brac around the neck. The full circle **skirt** has a side opening with 4 snaps and is gathered around the waist. It has band of 7 rows of grey bric-a-brac toward the bottom of the skirt.



Skirt and Top  
Ensembles  
1960s

# Oklahoma Fashion Museum Collection

## 1960s Orange & Brown Knit Skirt and Top Ensemble

Category: Skirt & Top

Acquisition #3.85.3.B

Condition: Excellent

Size: 10

Designer: Norman Norell

Donated by: Althea Louise Notson, April 20, 1985

Description: A wool knit skirt with top. The **brown skirt** is unlined, 29" long, has a side metal zipper with 2 snaps, and a 30" waist. The **top** is orange with brown trim around the high collar, the sleeves, and the bottom. It has a back metal zipper, long sleeves with cuffs, bra stays, and partial lining in the bodice. There is also a matching orange tie **belt** that is 86" long and 15" wide.



Acq. # 3.85.3-B  
Size: ~~10~~ 10  
Des. Norman Norell?  
Don. Althea Notson?  
Dec. 1960s  
Items: 2 piece dress  
in wool knit. <sup>both</sup>  
shirt - orange <sup>top</sup>  
with trim on long sleeve  
neck & bottom of top.

# Oklahoma Fashion Museum Collection

## 1960s Light Green Suit Ensemble by Dalton

Category: Suit  
 Condition: Good  
 Designer: Dalton Mfg.  
 Owner: Ellen E. Burns

Acquisition #13.85.25.H  
 Sizes—Sweater: 10 / Skirt, Pants, Jacket: 8  
 Store Tag: None

Description: A 4 piece light green suit with a sweater, jacket, pants, and a skirt in 100% wool. The owner wore this with purple accessories. The **turtleneck sweater** has a back zipper and a few stains. The **skirt** is gored. The **pants** are unlined, have an elastic waist, and has some discoloration and a stain inside 1 leg. The **jacket** is lined in the back, has a collar, 2 green buttons, patch pockets, has long sleeves with no cuffs. It also has some moth holes. Donated by Libbie Burns, May 23, 1985



# Oklahoma Fashion Museum Collection

## 1960s-70s Long Multicolored Skirt with Blue Blouse

Category: Skirt

Acquisition # 25.85.4.B

Condition: Very Good

Estimated size: 10

Designer: Unknown

Store Tag: None

Donated by: Mary Lou Bohnard, Oct. 1, 1985

Description: A long, multi-colored evening skirt to be worn with a wide belt and a solid colored blouse. It has purple lining, a slit in the back and a zipper with 2 buttons & loops. The design consists of triangle patterns outlined in brown and grey over the multicolored horizontal striped fabric. A navy blouse is shown with this skirt, but many other colors could be worn.



Acq # 25.85.4-B  
Size: 10  
Des: unknown  
Don: Mary Lou Bohnard  
Des: early 70s style  
Item: Multi colored  
long evening skirt  
in good. To be worn  
with a wide belt &  
solid colored blouse

Description:  
This era was the  
the tailored long  
skirt. It would be  
shorts for dinner  
& every where except  
daytime.  
This skirt is meant  
a blouse, new but  
should have a cold  
should have a wide  
belt.



Fabric detail

# Oklahoma Fashion Museum Collection

## 1960s Denim Skirt & Jacket Ensemble

Category: Skirt, Jacket & Top

Acquisition #75.86.16.J

Condition: Excellent

Estimate Size: 8

Inside tags: Skirt—Micmac St. Tropez; Jacket— Ms. Lee; Top—Crazy Horse

Donated by: Arden Barrett (wife of Paul Arthur Barrett, M.D.), July 10, 1986

Description: A 3 piece ensemble with a denim wrap skirt, embroidered denim jacket, and a blue top. The long sleeved, blue **top** is 70% acrylic, 30% wool and made in Hong Kong. The denim wrap **skirt** is “100% cotton Coton Baumwolle,” was made in France, size 34N, and has 2 pockets and a side tie. The denim **jack- et** has long sleeves, 2 breast pockets, metal “Lee” buttons down the front, on the pockets. Gold trim is on the rounded collar, pocket flaps, and sleeve ends. The jacket back has appliqued flowers and a butterfly with some embroidery.



*Acq. # 75.86.16.J  
 Size: 8  
 Des: Micmac St. Tropez wrap skirt  
 Des: Arden Barrett  
 Des: late 60's  
 Top: 47% embroidery  
 blue jean outfit  
 jacket has embroidery  
 on back w/ gold like  
 trim. denim wrap  
 skirt. (over)*



Jacket tags



Top inside tag



Skirt inside tag

*blue acrylic  
 sweater to be  
 worn over a  
 long sleeve white  
 shirt.*



Back detail

# Oklahoma Fashion Museum Collection

## 1960s Teal 3 Piece Skirt & Blouse Ensemble by Act III

Category: Skirt & Blouse Ensemble

Acquisition #103.87.12.L

Condition: Excellent

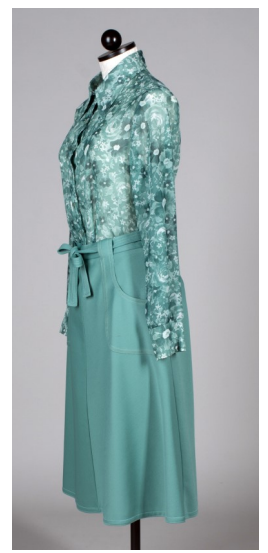
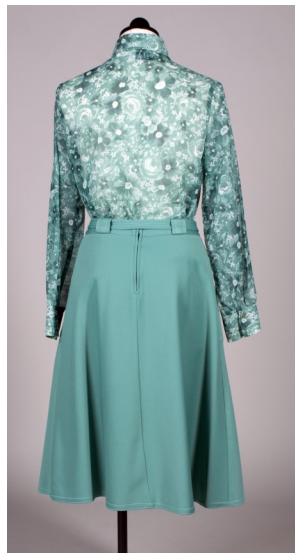
Estimated size: 8

Designer: ACT III

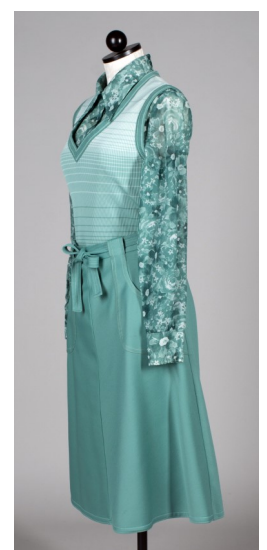
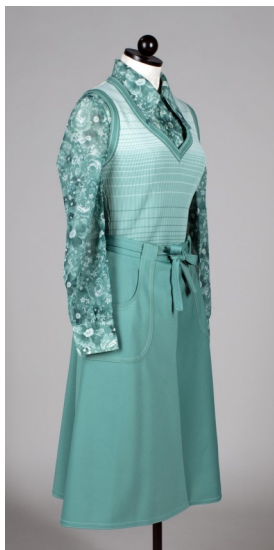
Store Tag: None

Donated by: Joniel "Jo" Russell (wife of Harold R. Russell of Tulsa, OK), June 23, 1987

Description: This ensemble has a skirt, blouse and knit tank. The print chiffon **blouse** has long sleeves, a pointed collar, and 8 teal buttons in front. The A-line **skirt** is 100% dacron, polyester, has belt loops with a fabric tie belt, cargo pockets and top stitching. The **tank** has horizontal stripes, a V neck and is 100% dacron polyester knit. This set goes with 103.87.12.K. (a teal green pants suit).



Acq# 103.87.12.L  
Size: 8  
Des: Act III  
Don: Mrs. Harold Russell  
(Jo)  
Des: 60's  
Stem: 3pc teal mfl  
& match set - to go set  
103.87.12.K. Print  
chiffon blouse -  
knit shirt -  
striped knit tank





# Oklahoma Fashion Museum Collection

## 1960s Navy Blue & White Skirt & Blouse Ensemble by Galanos

Category: Skirt and Blouse

Acquisition #123.88.2.B

Condition: Excellent

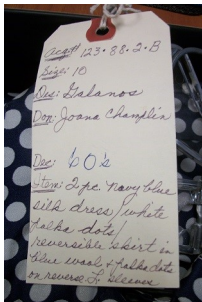
Estimated size: 10

Designer: Galanos

Purchased at: Nieman Marcus

Donated by: Joanna M. Champlin, March 3, 1988 (Enid, Oklahoma)

Description: This outfit consists of a long sleeve blouse, and reversible skirt. The **blouse** is made of navy blue silk with white polka dots. One button shows at the neckline, the others button in under the facing. The **skirt** has the silk polka dot fabric on one side with a navy blue band. The reverse side is navy blue with the polka dot band. The skirt opens in the front and has a 3-button and snap closure.



Detail of front and side of skirt

# Oklahoma Fashion Museum Collection

## 1960s Navy Silk Print 2 Piece Long Skirt & Top Ensemble

Category: Long skirt and Top

Acquisition #178.91.3.A

Condition: Excellent

Estimated size: 12

Designer: Hanai Mori Japanese (no tag)

Store Tag: None

Donated by: Mary Lou Bohnard, Feb. 4, 1991

Description: A long navy blue silk skirt and matching top with hot pink trim and large blue and pink flower designs. The **top** has kimono sleeves and braw stays. The **skirt** is 41" long, has an elastic waist, and wraps around.



Acq# 178.91.3.A  
Size: 12  
Des: Hanai Mori  
Japanese  
Don: Mary Lou Bohnard  
Dec: 60's  
Item: Navy silk  
print 2pc long  
dress. Hot pink trim  
on kimono sleeve



Care tag

Skirt and Top  
Ensembles  
1970s

# Oklahoma Fashion Museum Collection

## 1970s Purple & Red Skirt with a Red Sweater

Category:	Skirt and Sweater	Acquisition #80.86.9.A
Condition:	Fair, some moth holes	Estimated size: 10
Designer:	Sweater-Chaus, made in Hong Kong	Store Tag: None
Donated by:	Mary Lou Bohnard, Sept. 1, 1986	

Description: A red turtleneck sweater with a long skirt. The pullover **sweater** has long sleeves and is 70% lambs wool, 20% angora, 10% nylon, and has a care tag for "dry clean only". It has some moth holes. The long knit **skirt** is in shades of purple and red geometric designs,. It has an elastic waist and a slit in the back. It also has some moth holes.



Acq # 80.86.9.A  
 Size: 10  
 Des: unknown  
 Don: Mary Lou Bohnard  
 Date: early 70's  
 Item: Long knit skirt  
 in shades of purple  
 & red geometric design.  
 Turtleneck red sweater



Moth holes

# Oklahoma Fashion Museum Collection

## 1970s Forest Green Knit Skirt with Top Ensemble by Adolfo

Category: Skirt & Top Ensemble

Acquisition #86.86.2.A

Condition: Good

Estimated size: 6-9

Designer: Adolfo

Donated by: Helen Strassburger Levy (wife of Harrison Levy, Sr.), Nov. 15, 1986

Description: This forest green ensemble is made of 70% wool and 30% rayon. It has cream stars knitted in with the green. The **skirt** is 28" long and the waist is 30" with elastic encased, and it has a few moth holes. The **top** has long sleeves with cream knit on the ends. It has a front V opening with 5 covered buttons and loops. It has a raised collar with attached ties, and shoulder pads.



ACA# 86-86-2 A  
SIZE - 8  
DES - ADOLFO  
DON - Mrs HARRISON  
LEVY  
DEC - 70's  
ITEM - 2 PC FOREST  
GREEN KNIT W/  
BGE TRIM



# Oklahoma Fashion Museum Collection

## 1970s Green & White Skirt & Blouse Ensemble

by Diane Von Furstenberg

Category: Matching Skirt and Top

Acquisition #124.88.1

Condition: Good

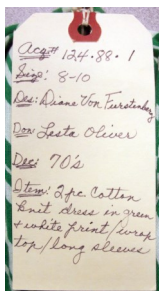
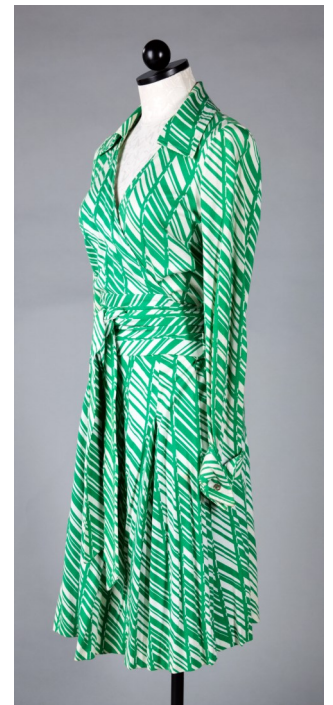
Estimated size: 10

Designer: Diane Von Furstenberg, made in Italy

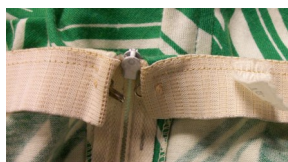
Store Tag: None

Donated by: Lesta Oliver, March 7, 1988

Description: A 2 piece cotton knit ensemble in green and white print fabric. The short **skirt** has white elastic inside the waist with a hook and eye, a back zipper, and to attached loops for hanging. The **top** wraps around and ties in front. It has a collar, a V neck, and long sleeves with pointed cuffs and 2 buttons on each cuff. There are some stains in the fabric, and the elastic at the waist of the skirt is worn out.



Skirt details



## Oklahoma Fashion Museum Collection

### 1970s Long Navy Skirt & Blouse with Lace by Geoffrey Beene

Category: Skirt and Blouse

Acquisition #130.88.3.A

Condition: Excellent

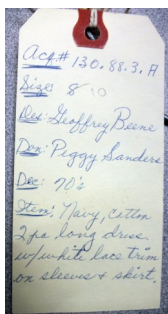
Size: 10

Designer: Geoffrey Beene

Store Tag: None

Donated by: Betty Jeanne Ford Sanders (wife of Millard W. Sanders), May 22, 1988

Description: A two piece navy blue cotton ensemble with a long skirt and matching top. The **skirt** has wide, white cotton lace on the bottom, a side zipper with a hook & eye, and a "Front" label and size tag. The **blouse** has short sleeves with wide white lace on the bottom of the sleeves, and a V neck with a tie at the neckline. The fabric is very light weight.



# Oklahoma Fashion Museum Collection

## 1970s Silk Chiffon Skirt and Blouse Ensemble

Category: Dress

Acquisition #178.91.3.B

Condition: Fair

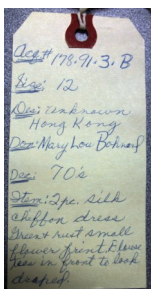
Estimated size: 12

Designer: Unknown

Store Tag: None

Donated by: Mary Lou Bohnard, Feb. 4, 1991

Description: A matching skirt and blouse in green and rust patterned silk chiffon with a small flower print. The **skirt** has an elastic waist and a small border on the bottom. The **blouse** has wide long sleeves with cuffs and 3 buttons. It has a front opening with 6 buttons, a stand-up collar, and can be tied in front. The elastic at the waist is completely stretched out.





## Oklahoma Fashion Museum Collection

### 1970s Blue & Black Silk Skirt with Blouse by Michael Vollbrach

Category: Blouse & skirt

Acquisition #183.91.12.J

Condition: Excellent

Estimated size: 8-10

Designer: Michael Vollbrach

Donated by: June Kathryn Cain Durland (wife of Jack Raymond Durland), August 20, 1991

Description: A silk skirt and top in Wedgewood blue and black with lavender orchids. The **wrap-around skirt** is 28" long and fastens in the front toward the right side with a button and loop and 2 hooks and eyes. It's gathered at the waist. The **top** pulls over the head, has shoulder pads, and long sleeves with 1 covered green button. There is white trim around the cuffs, the butterfly collar and the bottom. There are 2.5" slits on



Acc # 183-91-12-J  
Size: 8  
Des: Michael Vollbrach  
Don: June Durland  
Dec: 70s  
Stems: 2pc silk suit  
in black & wedgewood  
blue fabric w/ lavender  
orchids. Black  
collar trimmng in  
white.

# Oklahoma Fashion Museum Collection

## 1970s Red & Black Skirt with Red Blouse Ensemble

Category: Skirt and Blouse

Acquisition #192.93.2.B

Condition: Good

Estimated size: 10-12

Designer: Unknown, no tag

Store Tag: None

Donated by: Mary Lou Bohnard Darling (wife of Charles W. Darling), Oct. 25, 1993

Description: This 2 piece outfit consists of a red long sleeve blouse a bow collar, an ankle length knit skirt in black brown, and red vertical and horizontal patterns. Accessories include a red belt, and a head scarf that matches the skirt. There are some small holes in the skirt.



Knit fabric detail showing some damage



Blouse with head scarf accessory

Acq # 192.93.2.B  
Size: 12  
Des: Kimberly  
Don: Mary Lou Darling  
Dte: 1970  
Stem: Black, brown  
& tone red knit  
ankle length skirt  
& scarf, Red blouse  
Red belt.

# Oklahoma Fashion Museum Collection

## 1970s Brown Knit Skirt & Top Ensemble by Diane Von Furstenburg

Category: Skirt and Top

Acquisition #198.94.1.A

Condition: Good

Size: 12

Designer: Diane Von Furstenburg (no tag)

Store Tag: None

Donated by: Mary Lou Bohnard Darling (wife of Charles Darling), Dec. 5, 1994

Description: A brown knit ensemble with a skirt with matching top. The **skirt** is unlined, has an elastic waist and hanging loops. It's 30" long and 28" at the waist. The wrap **top** is unlined, sleeveless and has a corded tie which goes through a side hole. It has some discoloration, perspiration stains, and some pulled threads.



Acc # 198.94.1  
Size: 12  
Des: Diane Von Furstenburg  
Don: Mary Lou Darling  
Dec: 1970's  
Note: Henna Knit  
20 piece wrap top  
cords skirt / knee  
woven fabric

LOT  
Size 12

# Sportswear:

Riding Outfits

Ski Suit

Swimsuits

# Oklahoma Fashion Museum Collection

## 1920s Brown Corduroy Riding Habit

Category: Riding Habit

Acquisition #42.85.2.B

Condition: Good

Estimated size: 2 or 4

Designer: Unknown

Owned by donor's grandmother

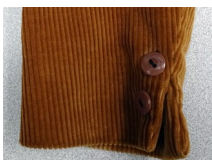
Acc. # 42.85.2.B  
 Size: 2 or 4  
 Est. unknown  
 Des: Carla Paul  
 Date: 1920s  
 Item: Brown corduroy  
 riding habit - worn  
 by donor's grandmother  
 brought from Minn.

Donated by: Carla Blake Paul (married to K-Lynn Paul), Nov. 25, 1985

Description: This brown corduroy riding habit was worn by the donor's grandmother. It was brought to Oklahoma from Minnesota. The **breeches** have a 4 button opening on each side, belt loops, slit pockets, knee patches, a leather lined crotch, and the bottom of each leg has a 7 button opening. The **jacket** is lined in beige material. It has a collar, long sleeves and is waist length, giving a vest look. It has 4 brown buttons in front, small pockets, and the sleeves have 2 buttons for decoration. The back has an attached belt with a buckle.



1920  
 Riding Habit  
 brown corduroy



Sleeve buttons



Jacket opening

Acc. # 42.85.2.B  
 Size: 2 or 4  
 Des: unknown  
 Des: Carla Paul  
 Date: 1920s  
 Item: Brown corduroy  
 riding habit - worn  
 by donor's grandmother  
 brought from Minn.



Pants leg opening



Waist band and opening

# Oklahoma Fashion Museum Collection

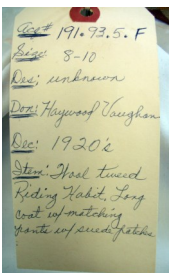
## 1920s Brown Tweed Wool Riding Habit

Category: Riding Habit Acquisition #191.93.5.F  
Condition: Very Good Estimated size: 8-10  
Designer: Unknown Store Tag: Marshall Field & Company  
Donor: Mr. Haywood Vaughan (Ardmore, Okla.), July 17, 1993

Description: A brown tweed wool riding habit including the breeches, jacket, and belt.. The **breeches** are unlined and have a leather crotch, leather knee patches, a small hip pocket, and they fasten on the side with brown buttons, and on the calves with 6 buttons. The **jacket** is lined, has 2 buttons in front, 2 buttons on the sleeves, a back vent with a button closing, and 2 pockets with curved openings. The **belt** is cloth with a leather buckle. Flaw: the inside leather crotch has stains.



Leather crotch inside pants



Back Vent Opening



View of pocket and sleeve

# Oklahoma Fashion Museum Collection

## 1930s Riding Pants

Category: Riding Pants

Acquisition #195.94.4.B.1

Condition: Fair, some stains

Estimated sizes: 3

Designer: Unknown

Donated by: Cecelia "CiCi" Wooley Goodwin (wife of Thomas Ward Goodwin Sr.), March 25, 1994

Manufacturer: The Genuine Carlpool, super shrunk, Car Pool Mfg. Co., San Antonio

Description: The first pair of riding pants has leather knee patches and a button up side opening with a very unique fastener. The second pair of pants is very small. It buttons up in the front, and has 2 pockets in the front and 2 pockets in the back. There are stains on both sides of this pair. Both of these are very small.



Side Opening



Pair #1



Pair #2

*Acc # 195.94.4.B  
Size: 8-10  
Des: unknown  
Don: CiCi Goodwin  
Des: early 30's  
Item: 2 pairs of  
Cotton (beige)  
riding pants. One  
pair has side  
patches.*



# Oklahoma Fashion Museum Collection

## 1920s Brown Wool & Plaid Ski Suit

Category: Ski Suit

Acquisition #42.85.2.A

Condition: Good

Estimated size: 4

Designer: Unknown

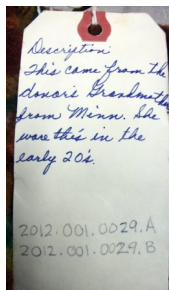
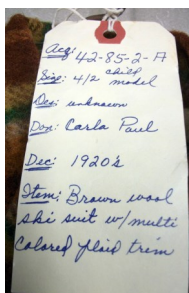
Replacement value: \$1,000

Donated by: Carla Paul (wife of K-Lynn Paul), Nov. 25, 1985

Description: This is a pure wool ski suit that came from Minnesota. The neck, neck scarf, sleeves, and pockets are made with yellow and brown plaid wool. The pants and body of the top are in brown wool. The neck scarf is attached and is part of the color. The jacket buttons up, and there a matching wool belt. The donor's grandmother wore this suit in the early 1920s.



View without the



Pants waistband



Front opening



Sleeve detail



# Oklahoma Fashion Museum Collection

## 1900-1916 Red Bathing Costume

Category: Bathing Suit

Acquisition #201.16.21

Condition: Excellent

Estimated size: 10-12

Designer: Unknown

Store Tag: None

Donated by: Unknown, found in the collection

Description: A red and white, two piece bathing suit with a sailor top. The TOP has white trim around the sleeves, the hem, and on the collar, and it has a white tie at the V neck. The knee length **pants** have an elastic waist and elastic on the bottom with white trim on the bottom edges.



Acq # 201.16.21  
Size: 10-12  
Designer: Unknown  
Decade: 1920s  
Item: Red & white  
2 p. Bathing suit -  
Sailor top, bottoms  
have elastic waist  
& @ bottom

# Oklahoma Fashion Museum Collection

## 1920s Blue Wool Swim Suit by Jantzen

Category: Swim suit

Acquisition #195.94.4.A

Condition: Good

Size tag: Ladies 40

Designer: Jantzen

Current location: Miscellaneous

Donated by: Cecelia "CiCi" Wooley Goodwin (wife of Thomas Ward Goodwin Sr.), March 25, 1994

Description: This lady's swim suit is from the late 1920s and was made in the U.S.A. by Jantzen. It's made of navy blue wool and has attached shorts underneath the top. There is a swimmer's design on the left side of the skirt. The inside tag on a shoulder says it came from "Miller's Clothing House" in Sturgeon Bay, Wis. The patent on the design is dated Sept. 6, 1921.



Acq# 195.94.4.A  
Size 40-44  
Des: Jantzen  
Don: Ci Ci Goodwin  
Des: late 20s  
Stm: Navy wool  
Swim suit, the  
legs of the suit

# World War II Uniforms

# Oklahoma Fashion Museum Collection

## 1940s WWII Army Air Corp Jacket

Category: Military Jacket

Acquisition #37.85.5.D.1

Condition: Excellent

Owner: W.O. Lacey

Designer: U.S. Gov't.

Manufacturer: Sol Frank Military Supply Co.

Donor: Marjorie Dewar (wife of James P. Dewar, M.D.), Nov. 13, 1985

Description: A green wool jacket with matching belt and hat from World War II Army Air Corp. With the jacket are 2 khaki colored ties, a brown leather belt, and a hat. Inside the coat is a label that says "W.O. Lacey, 43-D. Mission 450".



Ties and a belt



Hat shown in the pocket above



# Oklahoma Fashion Museum Collection

## 1940s WW II Marine Uniform

Category: Military Uniform

Acquisition #37.85.5.D.2

Condition: Excellent

Branch of Service: U.S. 3rd Marine Amphibious Battalion

Designer: U.S. Government

Donor: Marjorie Dewar (wife of James P. Dewar, M.D.), Nov. 13, 1985

Description: A U.S. Marine Corp winter enlisted uniform with a leather belt, and hat. The date inside one of the sleeves is stamped Sept. 23, 1944. There is a patch for the 3rd Marine Amphibious Battalion on the left sleeve.



# Oklahoma Fashion Museum Collection

## 1940s WW II WAAC Uniform

Category: WAAC Military Uniform

Acquisition #158.89.2.A

Condition: Very Good

Estimated size: 10

Designer: U.S. Gov't.

Inside Tag: F. Guilliam, Short 18

Donated, and owned by: Flecia Guilliams Holcomb (wife of Frank Holcomb), August 1, 1989

Description: A Women's Army Auxiliary Corp (WAAC) winter wool uniform including a skirt, blouse, tie, jacket and gloves. The skirt and jacket are in dark olive drab, the blouse is khaki colored with long sleeves and 2 pockets, and the tie clips on. The blouse has some holes in the fabric and some stains. A dress and fatigue hat are also available under acquisition #158.89.2.B.



Acq. # 158.89.2.A  
Size: 10  
Des. Government  
Des. Mrs. Flecia  
Holcomb  
Dec: 1940s  
Item: WAAC Uniform  
Includes: coat, tie,  
skirt, shirt and  
gloves, boot cover



Inside Tag

# Oklahoma Fashion Museum Collection

## 1940s WW II WAAC Raincoat, Hats & Gloves

Category: WAAC Military Raincoat

Acquisition #158.89.2.B

Condition: Excellent

Estimated size: 10

Designer: U.S. Gov't

Store Tag: None

Donated, and owned by: Flecia Guilliams Holcomb (wife of Frank Holcomb), August 1, 1989

Description: A WAAC raincoat made of wind resistant, water repellent, cotton poplin with a removable liner. The coat and liner are olive green. It has a double-breasted front with belt, convertible collar and slit pockets. A parka hood could be buttoned on the collar. The ample hood space was provided in case a WAAC needed to wear a large helmet. All buttons are an olive green plastic. A dress hat and fatigue hat are also in this collection.



Obj# 158.89.2.B  
Size: 10  
Des: Suit Dress  
Don: Mrs Frank  
Holcomb  
Des: 4 D's  
Style: WAAC  
raincoat w/ hood  
Dress hat & fatigue  
hat.



# Oklahoma Fashion Museum Collection

## 1940s WW II Nurse's Cape

Category: WW II Nurse's Cape

Acquisition #174.90.1

Condition: Very Good

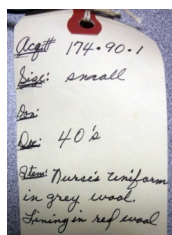
Estimated size: Small

Designer: U.S. Gov't

Store Tag: Snowwhite Garment Mfg. Co.

Donated and owned by: Betty Brinson (formerly Betty Kellough), Nov. 17, 1990

Description: A World War II nurse's cape in grey wool with red wool lining. It has a stand up collar with two metal clasps, and the initials "U.S." are embroidered on the collar. It has a fabric tag on each side, and two brass buttons, The tabs can be worn vertically, or used to fasten the cape closed. There is a chain inside for hanging up the cape, an inside pocket, and the name "B. Kellough" is embroidered inside. There is a slight tear at the neck.





## List of Designers

<b>Designer</b>	<b>Page(s)</b>
Act III	11, 35
Adolfo	40, 40
Alex Coleman	7, 10
Arendine	13
Beene Bag	19
Beene Bazaar	21
Breckenridge	25
Calvin Klein	17, 18, 20, 22
Dalton	2, 32
Diane Von Furstenberg	41, 46
Emilio Pucci	8
Galanos	36
Geoffrey Beene	42
Ginessa	15
Hanai Mori	37
Internationale Set	3
Jantzen	53
Kimberly Knits	24
Lasserre Couture Sport	21
Mark Hober, Inc.	23
Michael Vollbrach	44
Pauline Trigere	14
Ralph Loren	17
Ronald Amey	16

## List of Donors

### **Alspaugh, Ann Simmons (aka Ann Linn, Ann Cox)**

Ann was born in Duncan, Okla., she was a civic leader, and was inducted into the Oklahoma Hall of Fame in 1997. Her family was in the oil and gas business. Her father, Louis Bascom (L.B.) Simmons, founded the Rocket Oil Company of Duncan, and the Rock Island Refining Companies. Ann married and divorced 3 men: 1) Paul Anthony Andres, an insurance company executive, 2) James "Jimmy" Paul Linn, a prominent Okla. City lawyer, and 3) Marcus Lafayette Cox, an internal medicine doctor in Okla. City.

### **Barrett, Arden Jayne (wife of Dr. Paul Arthur Barrett)**

She lives in Nichols Hills in Okla. City. Her husband was a family physician in Bethany, Okla.

### **Bohnard, Mary Lou**

She was a couture buyer for John A. Brown's upscale women's wear department.

### **Brinson, Betty Kellough (wife of Chester L. Brinson)**

She was a veteran of WWII serving as a registered nurse in the Army Nurse Corps here and in France. She was active as a registered nurse from 1943 to 1976. She was in Nursing Service at the VA Hospital in Oklahoma City, in Public Health Nursing and in Nursing Education at Baptist Memorial Hospital School of Nursing. Her husband also served in the army during WWII and was discharged as a Captain. He worked in both the retail and wholesale grocery business after the war and in oil well supply. He retired from Phillips and Strong Engineering in Oklahoma City.

### **Burns, Ellen Evans (donated by Libby Burns)**

She was active in the arts and music and is the author several plays, including "Finer'n Fiddle Dust," which was based on the early days of Oklahoma after the opening of the Cherokee Strip.

### **Champlin, Joanna Marie**

She is the daughter of Joe Noble and Jane Edwards Champlin and lives in Oklahoma City. The family is part of the Champlin oil company.

### **Darling, Mary Lou Bohnard (wife of Charles Darling)**

She was a fashion buyer at Higbee's in Cleveland, Kaufman's in Pittsburg, and Gimbels in Philadelphia. In 1973 she moved to Okla. City and became the buyer of John A. Brown's upscale Women's Wear Dept.

### **Dewar, Marjorie (wife of James P Dewar, M.D.)**

She was the first president of the Women's Auxiliary to the University Hospitals and also served as the President of Church Women united. She was one of the first board members of the Foundation for Senior Citizens which operates the Superbia Retirement Village.

## List of Donors

### **Durland, June Kathryn Cain (wife of Jack Raymond Durland)**

Her father founded the Cain's Coffee Company. Her husband was a lawyer. She and her husband owned an art gallery in Nichols Hills in Okla. City.

### **Frank, Rita Sue (wife of Joe Frank)**

She and her husband owned Joe Frank, Inc., a men's clothing store in Nichols Hills Plaza in Okla. City

### **Frazier, Ruth Frances Logan (wife of Jay Frazier)**

She was a homemaker, and was invited to go to Washington, D.C. as one of 100 delegates to advise builders, manufacturers and designers on what homemakers wanted. Her husband was a prominent insurance man in Okla. City. He was in the army air corp and was an electrical engineer.

### **Goodwin, Cecelia "CiCi" Wooley (wife of Thomas Ward Goodwin Sr.)**

She was from Stonewall, Okla. And taught school there, and in Oklahoma City at West Nichols Hills Elementary and Eisenhower Middle School. Her husband was instrumental in building and developing the Village for about 8 years. He built houses and commercial buildings in Guymon, Woodward, Fort Gibson, Edmond and OKC. He was with an architectural firm for 9 years building schools and churches around the state.

### **Holcomb, Flecia Guilliams (wife of Frank Holcomb)**

She served as a WAAC during WW II and was a teacher and administrator for 33 years in Tecumseh, Oklahoma. She was very active in politics, family and social organizations.

### **Ivins, Dorothy (wife of Drayton Walford Ivins, Jr.)**

She was a free-lance fashion illustrator who began the "Dorothy Ivins Advertising Studio" in Oklahoma City. She was a free-lance fashion illustrator who began the "Dorothy Ivins Advertising Studio" in Oklahoma City. She was a supporter of the arts and was vice-president of the Okla. City Art Center, and headed the Speaker's Bureau for the Women's Committee of the Oklahoma City Symphony Orchestra. She was inducted into the City's Fashion Hall of Fame. Her husband worked for Kerr-McGee and was head of the Trust Dept. at Citizen's National Bank.

### **Lacy, Ann**

Ann Lacy is a successful private investor. She has worked in small business, manufacturing, floor planning, finance, and oil. She studied writing at Oklahoma City University, the University of Central Oklahoma, and the University of Oklahoma. She is the author of three published books: Concorde, a novel, Ann Lacy's Dress Book, a book on fashion, and a children's book. Lacy is a playwright, songwriter, stand-up comedian, former Oklahoma City Mummies Theatre performer, and model for photography, sculpture, fashion and hair design. A devotee of fashion, she founded Fashion Oklahoma in 1986 to promote Oklahoma fashion designers and provide a showcase for local fashion talent.

## List of Donors

### **Levy, Helen Strassburger (wife of Harrison Levy, Sr.)**

Helen participated in many community activities. She was active in the American Red Cross and was a member of the symphony, Oklahoma Arts Center and the Oklahoma Museum of Art. She was an artist, and was one of the first to display her paintings at the Festival of the Arts. Her husband helped shape Oklahoma City's commercial real estate market. He helped turn W 23 into the uptown shopping district, the city's first suburban shopping areal. He was also instrumental in the sale of the Santa Fe industrial district, the first organized industrial district in Oklahoma City.

### **Loving, Carrol McLemore (wife of William Albert Loving)**

She was President of Love and Loving Trucks in Oklahoma City in the 1930s. In the 1940s she bought out the business after a divorce and ran the business as Loving Trucklines. She was a nominee in 1982 for the Oklahoma Hall of Fame.

### **Mathews, Louise**

She was the regional director of the Oklahoma Fashion group from June 1969 until May 1971. Formerly she was the general manager and vice president of Streets Specialty Stores. When she retired she went into the real estate business.

### **Notson, Althea Louise**

She worked for Mrs. Edna Balliet, the first owner of Balliet's in Okla. City, as a couture buyer.

### **Oliver, Lesta**

She owned the "Simply Southwest" store in Edmond, Okla. which carried contemporary native clothing, accessories and home décor. She retired in 2013 after 30 years.

### **Paul, Carla Blake (wife of K. Lynn Paul)**

Her husband was a psychiatrist.

### **Rice, Mary (wife of George B. Rice) – no more information available**

### **Russell, Joniel "Jo" Foster (wife of Harold L. Russell)**

She was a teacher, a debate coach, and a community volunteer. He was an accountant in the oil and gas, and banking industries.

### **Sanders, Peggy Jeanne Ford (wife of Millard W. Sanders)**

Her husband was in the air conditioning business for homes and buildings. In 1966 he became the Thermo-Kind dealer for the eastern part of the state.

### **Vaughan, Mr. Haywood (from Ardmore, OK)**

Mr. Vaughn was very involved with Ardmore Little Theatre in Ardmore, Okla. He was the head costumer of the Ardmore Theater Group and an authority on vintage clothes. He donated many items to the collection, both antique and vintage.