

Shoes and Boots in the Oklahoma Fashion Museum Collection



1950s Brown Leather Sling Platforms



1910 Brown Leather Lace Up Boots

at the
**University of Central
Oklahoma**

Compiled by Mary Huffman, Coordinator of Grants & Contracts

College of Education & Professional Studies

University of Central Oklahoma, 2019

Shoes and Boots in the Oklahoma Fashion Museum Collection at the University of Central Oklahoma

Forward by Mary Huffman

History of the Collection

In the late 1950s, several prominent Oklahoma City women in fashion-related businesses initiated contacts with The Fashion Group International, Inc. headquartered in New York. As a result, a new regional “Fashion Group, Inc. of Oklahoma City (OKC Fashion Group)” was established in the fall of 1958.

One of the goals of the OKC Fashion Group was to collect garments in order to establish a “designer costume collection” covering several decades and representing significant changes in fashion design. They collected garments and accessories from prominent women in Oklahoma and other donors in the state. The collection was to be used by fashion marketing, costume design, drama, art, and history students. The items in the collection range from the late 1800s to the 1970s.

In 1989, the OKC Fashion Group disbanded and donated the entire collection to Central State University, which is now called the University of Central Oklahoma (UCO). The collection consists of over 800 items of clothing, 300+ hats, 151 pairs of shoes, 12 pairs of boots, 50+ purses, some jewelry and gloves.

The collection was kept in storage for many years and used occasionally for class instruction in the fashion marketing program. In 2014, I began the task of inventorying the collection, documenting details of each item and photographing some of the items and details. Most of the photos in this catalog were taken by fashion photography students.

It is now 2019 and everything has been photographed, documented and inventoried. It is my sincere hope that others will find this information helpful.

Catalog Arrangement

The shoes in the collection are shown first in this catalog. They range in date from 1915 through the 1990s. Most, however, are from the 1960s. They are arranged by decade, and then numerically by the acquisition numbers.

We have 12 boots in the collection: 1 pair from 1900, 2 pair from around 1910, and 9 pair from the 1960s-80s. These are also arranged from the oldest to the newest.

The studio photographs were taken in the photography studio in the Mass Communications Building on the UCO campus under the direction of Mr. Jesse Miller, a professor of fashion photography. The student photographers were Kelsey Smith and Zach Hunter. The research on the styles, and the descriptions of the items were performed by Jessica Rice, a museum studies student, and Emily Herrera, a fashion marketing student. These students were hired through a U.S. Department of Education grant called “Student Transformative Learning Record” (STLR) for this project.

I oversaw the entire project and created this catalog using the photos taken by the students, and some of the detail photos I also provided. The only editing done to the photos was cropping some of the original photos in Photoshop. The following pages were created using Microsoft Publish.

Mary Huffman
Coordinator of Grants & Contracts
College of Education & Professional Studies
University of Central Oklahoma
Edmond, Oklahoma

July 2019

Acknowledgements

My gratitude to all the people who helped me with this project through many hours and dedication.

First of all, I would like to thank Lillian Russel and the ladies who collected these items through the Fashion Group, Inc. of Oklahoma. Without their diligence and organization this collection would not exist.

My appreciation and thanks to Dr. James Machell, the UCO Dean of the College of Education & Professional Studies, for allowing me time to work with the collection.

Special thanks go to the following people who assisted me with this project:

To Jesse Miller, a professor in fashion photography at UCO. Thank you for supervising the students who took the photographs.

To Kelsey Smith and Zach Hunter, both STLR students who took photographs of the shoes and boots in the studio. Thank you for taking the pictures and using your photographic creativity. You did an excellent job.

To Jessica Rice, also a STLR student from the Museum Studies program. Thank you for all the work you did researching the types of shoe styles, measuring them, and for working diligently on the project.

Mary Huffman

July 2019

Table of Contents

1915-1930s Shoes

1915 Black satin shoes with French heels	2
1920s Black satin shoes with beading.....	3
1920s Blue satin shoes.....	4
1920s Black French heel shoes.....	5
1920s Black beaded top shoes.....	6
1920s-30s Tan leather Mary Jane shoes.....	7

1940s Shoes

Dark brown suede platform sling.....	9
Purple suede platform slings.....	10
Green snake platform slings.....	11
Navy blue suede pumps.....	12
Beige linen sling back platform heels.....	13
Navy blue platform heels.....	14

1940s-1950s Shoes

Moss green suede platform pump.....	16
Multi-colored striped wedges.....	17

1950s Shoes

Clear plastic & silver mule high heels.....	19
Gold & plastic T-strap pumps.....	20
Taupe & black pumps.....	21
Black calf high heeled sandals.....	22
Brown pumps with black trim.....	23
Navy blue calf pumps.....	24
Multi striped high heeled mules.....	25
Brown & black pumps.....	26
Black & white saddle oxfords.....	27
Brown leather sling platforms.....	28
Black silk high heels.....	29
Royal blue suede pumps.....	30
Navy blue suede pumps.....	31
Aqua silk pumps.....	32
Peach silk pumps.....	33
Black silk pumps.....	34
Navy blue silk pumps.....	35
Pink lame' spike pumps with rhinestones.....	36
Black suede pumps.....	37
Multi-colored high heels.....	38
Black calf high heel pumps.....	39

1950s Shoes (con't)

Aqua satin pumps.....	40
Shocking pink silk high heels with rhinestones.....	41
Black suede open-toed high heels with rhinestones.....	42
Silver lace pumps.....	43
Black suede pumps with lattice toes.....	44

1950s-1960s Shoes

Tan leather low heel pumps with blue lacing.....	46
Black silk sandals with rhinestone trim on vinyl.....	47
Black & gold peep toe platforms.....	48
Black & silver pumps.....	49

1960 Shoes

Turquoise low heel pumps.....	51
Low heel grey silk pumps.....	52
Brown & White Saddle shoes.....	53
Black silk low heel pumps.....	54
Black patent low heel pumps.....	55
Navy, red & white low heel pumps.....	56
Gold pumps with rhinestone pilgrim buckles.....	57
Gold kid pumps with bows and rhinestones.....	58
Lilac sling back high heel sandals.....	59
Shocking pink suede & tan leather low heel pumps.....	60
Gold mesh low heel pumps.....	61
Cream patent leather pumps.....	62
Black silk pumps.....	63
Black satin low heel pumps.....	64
White patent leather low heel pumps.....	65
Taupe low heel pumps.....	66
Taupe patent leather pumps.....	67
Black silk pumps with rhinestones.....	68
Navy blue silk pumps with rhinestone buckles.....	69
Grey patent leather pumps with a bow.....	70
Peacock blue dress pumps.....	71
Low heel green silk pumps with rhinestones.....	72
White pumps with red toes & heels.....	73
Shocking pink kid low heel pumps.....	74
Gold mesh low heel pumps.....	75
White patent leather pumps.....	76
Black silk pumps with bows.....	77
Rust suede oxfords.....	78
Black silk pumps.....	79

1960s Shoes (con't)

White silk pumps with rhinestone trim.....	80
Brown & black loafers.....	81
Brown leather pumps.....	82
Navy silk low heel pumps.....	83
Bright green silk low heel pumps with rhinestones.....	84
Black suede pumps.....	85
Brown faux reptile suede shoes.....	86
White patent leather pumps with colored striped trim.....	87
Red silk low heel pumps.....	88
Black patent sandals with medium heels.....	89
Hot pink pumps with a rhinestone decoration.....	90
Hot pink pumps with decorative toes.....	91
Mint green faux ostrich pumps with bows.....	92
Pale aqua low heel silk pumps.....	93
Black satin pumps with rhinestone buckles.....	94
Brownish black low heel silk pumps.....	95
Black suede pumps with gold piping & low heels.....	96
Gold peach silk low heel pumps.....	97
Iridescent bone low heel pumps.....	98
Black suede low heel sandals.....	99
Pink kid low heel pumps with embroidery.....	100
Moss green suede pumps.....	101
Black & white spectator pumps.....	102
White patent leather pumps.....	103
Mustard patent leather pumps.....	104
Gold sandals with rhinestones.....	105
Gold pump with cut-out on top.....	106
Black pumps with rhinestone pilgrim buckles.....	107
Black silk low heel pumps.....	108
Black calf pumps with pilgrim buckles.....	109
Black lace low heel pumps.....	110
Black silk low heel pumps.....	111
Pewter pumps which has a matching pure.....	112

1960s-70s Shoes

Cream calf heeled sandals.....	114
Brown & white spectator pumps.....	115
Gold wedge sandals with plastic vamp.....	116
Brown suede pumps.....	117
Navy & camel casual sandals.....	118
White lace pumps.....	119

1970s Shoes

Black suede slings.....	121
Black patent leather high heel sandals.....	122
Dark green peep toe platform heels.....	123
Black patent leather with beige wedge heels.....	124
Cream calf high heeled sandals.....	125
Green leather peep toe platforms sandals with cork heels.....	126
Blue wedge sandals.....	127
Black & wine leather low heel sandals.....	128
Pink suede sandals.....	129
Red, white & blue spectator pumps.....	130
Yellow espadrills.....	131
Rust calf T-strap shoes.....	132
Wine high heeled pumps.....	133
Brown naturalizer high heeled sandals.....	134
Taupe low heel pumps.....	135
Black velvet pumps with rhinestones.....	136
Light navy blue high heel pumps.....	137
Green kid mules.....	138
Beige kid mules.....	139

1970s-80s Shoes

Beige leather loafers.....	141
Wine suede high heeled sandals.....	142
Taupe ankle strap high heels.....	143
Black satin high heel sandals with rhinestones.....	144
Silver slings with rhinestones on vinyl.....	145
Taupe low heel pumps.....	146
Rust T-strap shoes with matching purse.....	147
Royal blue calf heeled sandals.....	148
Black dressy suede sandals with gold trim.....	149
Navy blue silk sandals.....	150

1980s-90s Shoes

Royal blue & white high heel pumps.....	152
Navy blue leather pumps.....	153
Black calf low heel pumps.....	154
Black velvet pumps.....	155
Black suede Mary Janes.....	156
Beige T-strap sandals by Amalfi.....	157
Hot pink sandals.....	158
Three tone suede loafers.....	159
Multicolored floral pumps with matching purse.....	160

Tan low heels with gold decorations.....	161
Boots: Prior to 1960s	
1900 Black leather lace up boots.....	163
1910 Black and tan lace up boots.....	164
1910 Camel lace up boots.....	165
Boots: 1960s	
White patent leather knee high boots.....	166
White Go-Go knee high boots.....	167
Boots: 1960s-70s	
Black suede lace-up knee high boots.....	168
Navy blue thigh high boots.....	169
Brown suede knee high boots.....	170
White over-the-knee boots.....	171
Faux snake skin over-the-knee boots.....	172
Brown suede knee high boots with zipper.....	173
Taupe mid-calf high heeled Peter Pan boots.....	174

1915 – 1930s

Shoes

Oklahoma Fashion Museum Collection

1915 Black Shoes with French Heels

Acquisition #S202.16.2

Size: 6

Instep imprint: None

Condition: Excellent

Style: Charleston

Description: Black leather shoes with a French heel. It has pointed toes, and black grosgrain ribbon ties that fit through 4 grommets on each shoe.

Color: Black

Length: 11" Width: 3" Heel: 3"

Sole imprint/mark: None

#s inside: 370 7998



Oklahoma Fashion Museum Collection

1920s Black Satin Shoes with Beading

Acquisition #S202.16.4

Size: 8M

Instep imprint: Hamilton Shoe Co., Ardmore, Oklahoma

Condition: Poor

Color: Black with beads

Length: 9.5" Width: 2.75" Heel: 2.5"

Sole imprint/mark: None

#s inside: None

Designer: These black satin shoes have beading on top of the toes, and a bow with beading and rhinestones. The shoes are very worn, scuffed on the outside, and the inside lining is torn.



Instep imprint



Inside damage



Oklahoma Fashion Museum Collection

1920s Blue Satin Shoes

Acquisition #S202.16.6

Size: 6

Instep imprint: F.N. Foster & Company

Condition: Poor

Color: Blue

Length: 10.5" Width: 2.5" Heel: 2.5"

Sole imprint/mark: None

#s inside: None

Designer: These Charleston style shoes are in aqua blue satin and have French heels and pointed toes. They have 2 round, pleated satin decorations on the top and originally had rhinestone buckles. The vamp is in a cream leather. The shoes are scuffed, the decorations are damaged, and the buckles have come loose.



Oklahoma Fashion Museum Collection

1920s Black French Heel Shoes

Acquisition #S202.15.7

Size: 6

Instep imprint: Bench Made Volk's

Condition: Fair

Description: These black, French heeled shoes are in black leather and satin. They have two V shaped cross-over straps that button on each side.

Color: Black

Length: 10" Width: 2.5" Heel: 2.5"

Sole imprint/mark: None

#s inside: 1500 23 97 2666



Oklahoma Fashion Museum Collection

1920s Black Beaded Top Shoes

Acquisition #S202.16.8

Size: 6

Instep imprint: Meadors & Son's, Nashville, Tenn.

Condition: Good

Description: These black leather shoes have French steel bead designs on the top. The inside is in brown leather and tan fabric.

Color: Black

Length: 10" Width: 2.75" Heel: 2.5"

Sole imprint/mark: None

#s inside: 1500 23 97 2666



Oklahoma Fashion Museum Collection

1920s-30s Tan Leather Mary Jane Shoes

Acquisition #S202.16.11

Size: 4 1/2

Instep imprint: None

Condition: Fair

Description: These tan Mary Jane style shoes have a decorative leather applique stitched onto each side with cording wrapped around the edges. The strap fastens with a tan button. One of the insoles is missing, and the sole is coming loose from one of the shoes.

Color: Tan

Length: 9", Width: 2.5", Heel: 2.5"

Sole imprint/mark: None

#s inside: 245 92 091



1940s Shoes

Oklahoma Fashion Museum Collection

1940s Dark Brown Suede Platform Sling

Acquisition # S202.16.15

Size: 7 1/2 AAAA

Instep imprint: Palter DeLiso Inc., NYC ; Capri Last

Condition: Very Good

Description: These shoes are in very good condition and only have some slight wear.

Color: Dark Brown

Length: 10", Width: 3", Heel: 4"

Sole imprint/mark: None

#s inside: S 5490 41939



Oklahoma Fashion Museum Collection

1940s Purple Suede Platform Sling Back Shoes

Acquisition # S202.16.16

Size: 8 AA

Instep imprint: I. Miller Beautiful Shoes

Condition: Good

Description: These shoes have a silver buckle on the side and silver insoles. The insoles are coming loose.

Color: Purple

Length: 10", Width: 2.75", Heel: 4"

Sole imprint/mark: None

#s inside: None



Oklahoma Fashion Museum Collection

1940s Green Snake Platform Sling Back Shoes

Acquisition # S202.16.17

Size: 7 1/2 AAA

Instep imprint: Palto DeLiso Inc., NYC, Capri Last

Condition: Very Good

Description: These bright green platform sling backs have a brass buckle on the strap, brown leather inside, and a green insole. There is some slight discoloration on the heels, straps, and on the platform.

Color: Green

Length: 7.75", Width: 2.75", Heel: 4.25"

Sole imprint/mark: None

#s inside: S 39154 L9492



Oklahoma Fashion Museum Collection

1940s Navy Blue Suede Pumps

Acquisition #S202.16.36

Size: 8 A

Length: 12", Width: 3", Heel: 3.5"

Insoles imprint: I. Miller, Guildhall, Hand Sewn

Sole imprint: 39 8 15

Condition: Excellent

#s inside: 8A 452 3458 323678

Description: These pumps show slight wear on the soles, but are in excellent condition.



Oklahoma Fashion Museum Collection

1940s Beige Linen Slingback Platform Heels

Acquisition #S202.16.52

Size: 6 1/2 S

Length: 9.5", Width: 2.75", Heel: 4"

Insoles imprint: Beleganti, Hand-Made, 250

Condition: Excellent

#s inside: 6 1/2 S 1566 13135

Description: These peep-toe shoes have a cut-out on the toe box with red, blue, green, and yellow inter-twined leather lacing.



Oklahoma Fashion Museum Collection

1940s Navy Blue Platform Heels

Acquisition #S202.16.123

Size: 5 1/2 B

Insoles imprint: Dominic Romano Customized New York

Condition: Very Good

Length: 9.25", Width: 2.75", Heel: 4"

#s inside: 5 1/2B K6190 T0411



1940s~1950s Shoes

Oklahoma Fashion Museum Collection

1940s-50s Moss Green Suede Platform Pump

Acquisition # S202.16.19

Size: 7 1/2 AA

Instep imprint: Palter DeLiso Inc., NYC; Capri Last

Condition: Good

Description: These shoes have 2 leather straps that wrap around the back, cross over, and attached to the front. One shoe has a metal decoration that holds the 2 straps together, but the other shoe is missing one. The shoes have a tan lining and tan insole. The insole is coming loose at the toes, and there is some slight fabric discoloration.

Color: Moss Green

Length: 10", Width: 2.75", Heel: 4"

Sole imprint/mark: None

#s inside: 512774 A9438



Oklahoma Fashion Museum Collection

1940s-50s Multi-Colored Striped Wedges

Acquisition #S202.16.91

Size: 9 AA

Length: 9.75", Width: 2.75", Heel: 3"

Insoles imprint: Paris Fashion Shoes, Fifth Avenue Styles, REG. U.S. PAT. OFF.

Condition: Poor

#s inside: None



1950s Shoes

Oklahoma Fashion Museum Collection

1955 Clear Plastic and Silver Mule High Heels

Acquisition #S202.16.13

Size: 5

Instep imprint: Wanda Last, Sbicca California

Condition: Fair

Description: The open toed shoes have a clear plastic heel, a silver insole, and clear plastic on top with circular decoration with rhinestones. The plastic is discolored.

Color: Clear and silver

Length: 8.25", Width: 3", Heel: 3"

Sole imprint/mark: None

#s on heel instep: 52810



Oklahoma Fashion Museum Collection

1950s Gold & Plastic T-Strap Pumps

Acquisition # S202.16.18

Size: 7 1/2 AA

Instep imprint: Kerrybrooke Featherlite Fashions

Condition: Fair

Color: Gold

Length: 10", Width: 3", Heel: 4"

Sole imprint/mark: None

#s inside: 8-78033 237 6293 870078

Description: These gold evening shoes have clear plastic over the toe area, a wide gold center piece that attaches to the straps which have gold tone buckles. The insole is coming loose, and the plastic is discolored.



Oklahoma Fashion Museum Collection

1950s Taupe and Black Pumps

Acquisition # S202.16.22

Size: 7 1/2 AAAA

Instep imprint: Herbert Levine

Condition: Good

Description: These taupe pumps have black leather sewn on the end of the toe. The shoes have some marks and scratches from wear. The sole has a heart-shaped metal taps at the end of the toe.

Color: Taupe and Black

Length: 8.75" Width: 3" Heel: 3.5"

Sole imprint/mark: None

#s inside: B4860



Oklahoma Fashion Museum Collection

1950s Black Calf High Heeled Sandals

Acquisition # S202.16.23

Size: 7 1/2 B

Instep imprint: Barefoot Original

Condition: Very Good

Description: Black leather sandals with a closed toe and ankle straps. The back of the ankle strap has elastic encased in leather.

Color: Black

Length: 10.25" Width: 3" Heel: 3.5"

Sole imprint/mark:

#s inside: 23 113W26 5511



Oklahoma Fashion Museum Collection

1950s Brown Pumps with Black Trim

Acquisition #S202.16.24

Size: 7 AAAA

Instep imprint: Andrew Geller *exquisite footwear

Condition: Fair

Length: 10" Width: 3" Heel: 3.5"

Store imprint: Al Rosenthal's, Oklahoma City

#s inside: C30177 1CG54 Fancy

Description: The brown leather pumps have decorative black braid around the opening which loops on top of the toe. The heel tips are damaged and wrapped with black tape, and the tips of the toes are scuffed.



Oklahoma Fashion Museum Collection

1950s Navy Blue Calf Pumps

Acquisition # S202.16.25

Size: 8 1/2 AAAA/AAAAAA

Instep imprint: Andrew Geller Gamins

Condition: Good

Length: 8.75", Width: 3", Heel: 2.5"

Sole mark: 5/U

#s inside: DX 46-183-19674

Description: Dark navy blue leather pumps with a white leather strip sewn in below the opening. The toes have a navy blue leather bow on top.



Oklahoma Fashion Museum Collection

1950s Multi Striped High Heeled Mules

Acquisition #S202.16.26

Size: 8 1/2 A

Instep imprint: Leisure Loungers Reg. trademark

Condition: Very Good

Description: These bright, multi-colored shoes have red, purple, green, and yellow stripes with white lines and stitching in-between the colors. Big red feather pom-poms are on the front. According to a note that was in with the shoes, they were worn with a green hostess coat.

Donated by: Rita Sue Frank, Dec. 22, 1986

Length: 10", Width: 3", Heel: 3"

Store imprint: Al Rosenthal's, Oklahoma City

#s inside: 97300 5563



Oklahoma Fashion Museum Collection

1950s Brown & Black Pumps

Acquisition #S202.16.28

Size: 8 AA

Length: 10", Width: 3", Heel: 3.5"

Instep Label: Town & Country Shoes *T.M. Reg.

Sole imprint/mark: None

Condition: Good

#s inside: 58775 15

Description: Black pumps with brown leather trim stitched onto the bottom of the fronts for decoration. The toes have some marks on them, and there are some scuffs and creases in the leather. The inside is brown.



Oklahoma Fashion Museum Collection

1950s Black & White Saddle Oxfords

Acquisition # S202.16.29

Size: 8 M

Length: 10.25, Width: 3.5", Heel: 1/2"

Instep imprint: Dr. Onen elegance afoot

Sole imprint/mark: None

Condition: Good

#s inside: None

Description: These saddle oxfords have black rubber soles and white cotton laces with white lacing grommets. The shoes have some scuff marks on them.



Oklahoma Fashion Museum Collection

1950s Brown Alligator Sling Platforms

Acquisition # S202.16.30

Size: 8 M

Instep imprint: Palter Deliso

Condition: Excellent

Description: These shoes are in excellent condition and have very little wear. The straps have a brass buckle on the sides.

Length: 10", Width: 3", Heel: 4"

Sole imprint/mark: None

#s inside: 5X7939 K3X90



Oklahoma Fashion Museum Collection

1950s Black Silk High Heels

Acquisition #S202.16.31

Size: 9 AAAA

Length: 10.5", Width: 2.75", Heel: 3.75"

Instep imprint: Customcraft / wool composition insole

Sole imprint/mark: none

Condition: Very Good

#s inside: 6803218328

Description: These black silk pumps have some wear on the soles, and have a small round attachment at the toe.



Oklahoma Fashion Museum Collection

1950s Royal Blue Suede Pumps

Acquisition #S202.16.32

Size: 9M

Length: 10.5", Width: 3", Heel: 3.75"

Insole imprints: Designer Originals Jacqueline / Vinyl Socklining Fiber Insole

Condition: Good

#s inside: 153 K20220 617D63 26 16.5

Description: These blue suede shoes have some wear on the sole, and the insoles are cracked. Otherwise these shoes are in good condition.



Oklahoma Fashion Museum Collection

1950s Navy Blue Suede Pumps

Acquisition #S202.16.33

Size: 8AA

Length: 10.25", Width: 2.75", Heel: 3.5"

Insole imprints: "The best shoes you can buy are the best buy" Delman De Luxe

Condition: Very Good

#s inside: C42091 9AA 522

Description: These shoes have some die discoloration on the bottom of the sole. The top piece of heel says "Keystone O Prime".



Oklahoma Fashion Museum Collection

1950s Aqua Silk Pumps

Acquisition #S202.16.34

Size: 8 AA

Length: 10", Width: 2.75", Heel: 2.75"

Insoles imprint: Designer Originals Jacqueline

Condition: Fair

#s inside: 151 50112 248JJ63-165 UB

Description: These silk pumps have quite a few stains, especially on the heels.



Oklahoma Fashion Museum Collection

1950s Peach Silk Pumps

Acquisition # S202.16.35

Size: 8 1/2 AAA

Length: 10.25", Width: 2/75", Heel: 3"

Insoles imprint: Holiday Fine Shoes Right Shoe—Custom quality (with a coat of arms)

Condition: Good

#s inside: 4345 AAAAA720-151 56 H88L

Description: These pumps are in good condition except for a few scuff marks.



Oklahoma Fashion Museum Collection

1950s Black Silk Pumps

Acquisition # S202.16.37

Size: 8 1/2 AAAA

Length: 10", Width: 2.75", Heel: 3"

Insoles imprint: Andrew Geller Exquisite Footwear

Condition: Fair #s inside: 73557

Description: These black silk pumps are well worn and there is some damage on the heels. There is discoloration inside the opening along the edges.



Oklahoma Fashion Museum Collection

1950s Navy Blue Silk Pumps

Acquisition #S202.16.38

Size: 8 AA

Length: 10.26", Width: 2.75", Heel: 3.5"

Insoles imprint: Andrew Geller Exquisite Footwear, and Al Rosenthal's, Oklahoma City

Condition: Fair

#s inside: 8AA A11370

Description: The dark, navy blue silk pumps have satin strips over the silk in a crisscross pattern across the toe, and 2 strips towards the heel. The shoes are in fair condition. The heels are damaged and the soles show quite a bit of wear.



Oklahoma Fashion Museum Collection

1950s Pink Lame Spike Pumps with Rhinestones

Acquisition #S202.16.39

Size: 7 1/2 AA

Length: 10", Width: 2.75", Heel: 3.5"

Insoles imprint: Mr. Stanley Couture Footwear

Condition: Very Good

#s inside: 800/21

Description: These pink lame shoes have a teardrop decoration on the toes with rhinestones, and some are discolored. The vamp opening is red around the edges. Some of the lame is separating on the heels, but overall the shoes are in very good condition.



Oklahoma Fashion Museum Collection

1950s Black Suede Pumps

Acquisition #S202.16.40

Size: 8 A

Length: 10", Width: 3", Heel: 3"

Insoles imprint: Design by Evans

Condition: Excellent

#s inside: 5-1 42-4 43650

Description: Plain suede black pumps in excellent condition with slight wear on the soles.



Oklahoma Fashion Museum Collection

1950s Multi-Colored High Heels

Acquisition #S202.16.41

Size: 9 AAAA

Length: 10.5", Width: 2.75", Heel: 3.5"

Insoles imprint: De Liso Debs, designed by Palter/Deliso, ARIA

Condition: Excellent

#s inside: 20854 5 DL-53

Description: Multi-colored high heels in blues, reds, browns with black heels and pointed toes.



Oklahoma Fashion Museum Collection

1950s Black Calf High Heel Pumps

Acquisition #S202.16.42

Size: 8 AAAA

Length: 10.5", Width: 2.75", Heel: 3.5"

Insoles imprint: Palermo Originals, New York, Paris

Condition: Good

#s inside: 8 AAAA 51400 1875; Sole imprint: 8, 1097

Description: These black high heels have several scuff marks on the sides and on the heels.



Oklahoma Fashion Museum Collection

1950s Aqua Satin Pumps

Acquisition #S202.16.43

Size: 8 AA

Length: 10.25", Width: 2.75", Heel: 3"

Insoles imprint: QualityCraft, Hand Lasted

Condition: Good

#s inside: 75184 9 AAAA—11626 378

Description: These aqua colored satin pumps are pink on the inside and have a few scuffs around the toebox.



Oklahoma Fashion Museum Collection

1950s Shocking Pink Silk High Heels with Rhinestones

Acquisition # S202.176.44

Size: 6 1/2 A

Length: 9.5", Width: 2.75", Heel: 2.5"

Insoles imprint: by Mijji, Fiddle Last, Reg. US Pat

Condition: Excellent

#s inside: 6 1/2 A 9 F08a4662 29L 32

Description: These shocking pink high heels have a pattern of small rhinestones along the topline of the toebox. The soles show slight wear.



Oklahoma Fashion Museum Collection

1950s Black Suede Open-Toed High Heels with Rhinestones

Acquisition #S202.16.59

Size: 7 S

Length: 9.75", Width: 2.75", Heel: 4"

Insoles imprint: Herbert Levine Fine Shoes, Hand Lasted

Condition: Excellent

#s inside: 451B100L 13000



Oklahoma Fashion Museum Collection

1950s Silver Lace Pumps

Acquisition #S202.16.144

Size: 7 1/2 B

Insoles imprint: DeLiso Debs; Insole of Cellulose Fibre

Condition: Very Good

Length: 10.25", Width: 3", Heel: 2"

#s inside: 7 1/2B 33302 12 10 960-6L



Oklahoma Fashion Museum Collection

1950s Black Suede Pumps with Lattice Toes

Acquisition #S202.16.150

Length: 9.75", Width: 2.75", Heel: 3.5"

Size: 8 1/2 AAAA

#s inside: 801/2AAAA H8569 114B02

Insoles imprints: Delmanette Styled By Delman, New York, Paris, St. Louis

Condition: Excellent



1950s~1960s Shoes

Oklahoma Fashion Museum Collection

1950s-60s Tan Leather Low Heel Pumps with Blue Lacing

Acquisition #S202.16.49

Size: 7 M

Length: 9.75", Width: 2.75", Heel: 2.5"

Insoles imprint: Carmelletes, Hand Lasted, Narrow Heel

Condition: Good, some marks and creases #s inside: 7M 6760523, Man Made Insole

Description: These shoes have blue leather laces that weave through the leather on the sides, and tie in a bow in front.



Oklahoma Fashion Museum Collection

1950s-60s Black Silk Sandals with Rhinestone Trim on Vinyl

Acquisition #S202.16.54

Donated by: Rita Sue Frank, Dec. 22, 1986

Size: 8 1/2 AA

Length: 10", Width: 3", Heel: 3.5"

Insoles imprint: Galano

Condition: Excellent

#s inside: 14738 150BE48 (on ankle strap)

Description: These shoes were worn with a black evening pants suit (Acq. #98-86.22.B).



Oklahoma Fashion Museum Collection

1950s-60s Black & Gold Peep Toe Platform Shoes

Acquisition #S202.17.1

Size: est. 6

Insoles imprint: None

Condition: Very Good

Length: 9", Width: 3", Heel: 3.5"

#s inside: None



Oklahoma Fashion Museum Collection

1950s-60s Black & Silver Pumps

Acquisition #S202.17.2

Length: 10", Width: 3", Heel: 2.5"

Size: 6

#s inside: 6

Insoles imprint: Fandango Shoes for the young n' smart / Famous-Barr Co.

Condition: Good



1960s Shoes

Oklahoma Fashion Museum Collection

1960s Turquoise Low Heel Pumps

Acquisition #S202.16.9

Size: 8 1/2 B

Instep imprint: Customcraft "Cloud 7" Wool composition insole U.S. Pat. Nos 2.850.966 & 3.084.460

Sole imprint/mark: None

Condition: Very Good

Description: These turquoise pumps have nylon tops which are stretchy around the front of the shoes. They have no decoration.

Color: Turquoise

Length: 10" Width: 2.75" Heel: 3"

#s inside: 8 1/B 62815 32



Oklahoma Fashion Museum Collection

1960s Low Heel Grey Silk Pumps

Acquisition #S202.16.10

Size: 8 1/2 B

Instep imprint: Reine de Beaute', New York, Paris

Condition: Good

Designer: These grey, low heel silk pumps have nylon tops on the bottom of the heels. The fabric dye is faded in some spots and there is discoloration.

Color: Grey

Length: 10.25", Width: 3", Heel: 2.25"

Sole imprint/mark:

#s inside: 8 1/2 B 805303C9304W



Oklahoma Fashion Museum Collection

1960s Saddle Shoes

Acquisition #S202.16.12

Size: 5

Instep imprint: Sbicca California

Condition: Good

Description: These brown and white patent leather saddle oxfords have white shoestrings that go through 3 sets of grommets. The shoes have some scuff marks.

Color: Brown & White

Length: 10.25", Width: 3", Heel: 2"

Sole imprint/mark: None

#s inside: None



Oklahoma Fashion Museum Collection

1960s Black Silk Low Heel Pumps

Acquisition #S202.16.20

Size: 8 1/2 A

Instep imprint: Adlib Man Made Upper Sock & Innersole Balance Leather

Sole imprint/mark: None

Condition: Fair

Color: Black

Length: 10" Width: 3.75" Heel: 2"

#s inside: 5M 23355

Description: These black silk shoes have decorative black cording around the top edges. A few strings are loose and some areas of the cording are worn.



Oklahoma Fashion Museum Collection

1960s Black Patent Low Heel Pumps

Acquisition #S202.16.45

Size: 8 1/2 AA

Length: 10.25", Width: 2.75", Heel: 1.75"

Insoles imprint: Bruno Magli, Made in Italy, Bologna ; Tomaia Pelle

Condition: Very Good

#s inside: AA 8 1/2 A2083 P4005

Sole imprint: Genuine Leather symbol Vero Cuoio



Oklahoma Fashion Museum Collection

1960s Navy Blue, Red and White Low Heel Pumps

Acquisition #S202.16.47

Size: 7 1/2 D B

Length: 9", Width: 3.25", Heel: 1.5"

Insoles imprint: Station Wagons

Condition: Good, insoles are warped & loose

#s inside: 182138 3183

Description: These shoes have "leather uppers, balance of man-made materials" which is printed inside.



Oklahoma Fashion Museum Collection

1960s Gold Low Heel Pumps with Rhinestone Pilgrim Buckles

Acquisition # S202.16.50

Size: 8 N

Length: 10", Width: 2.75", Heel: 2.25"

Insoles imprint: Mr. Seymour

Condition: Good, some scruffs, insoles are worn
AW 57 XX

Printed inside: Man Made Insole, 8N 5706C45



Oklahoma Fashion Museum Collection

1960s Gold Kid Pumps with Bow and Rhinestones

Acquisition #S202.16.56

Size: 9 A

Length: 10.25", Width: 3", Heel: 2.5"

Insoles imprint: Stanley Philipson, Mr. Stanley couture footwear

Condition: Excellent

#s inside: 99395382SIT722



Oklahoma Fashion Museum Collection

1960s Lilac Slingback High Heel Sandals

Acquisition #S202.16.58

Size: 8 N

Length: 9.75", Width: 2.75", Heel: 3.5"

Insoles imprint: Palter DeLiso Inc., New York City

Condition: Very Good, a few scuffs

#s inside: 8N 513886 RH9466



Oklahoma Fashion Museum Collection

1960s Shocking Pink Suede & Tan Leather Low Heel Pumps

Acquisition #S202.16.65

Size: 8A

Length: 10.5", Width: 3", Heel: 2"

Insoles imprint: 1876 Johansen so mistakeably...

Condition: Good, some slight marks

#s inside: 16 444317



Oklahoma Fashion Museum Collection

1960s Gold Mesh Low Heel Pumps

Acquisition #S202.16.66

Size: 9

Length: 10", Width: 3", Heel: 1.5"

Insoles imprint: Made expressly for Andrew Geller

Condition: Excellent

#s inside: 2323



Oklahoma Fashion Museum Collection

1960s Cream Patent Leather Pump

Acquisition #S202.16.67

Size: 10

Length: 10.5", Width: 3", Heel: 2"

Insoles imprint: Stanley Philipson

Condition: Good, some scuff marks

#s inside: 16966 126 / Sole #s: 480



Oklahoma Fashion Museum Collection

1960s Black Silk Pump

Acquisition #S202.16.68

Size: 9 AA

Length: 10.5", Width: 2.75", Heel: 2.25"

Insoles imprint: Andrew Geller

Condition: Good

#s inside: 413136 1A5W8-45

Description: These shoes have a small black button attached at the topline of the toe box. The shoes look like they have dyed black. On one insole the word "Tiffany" is written.



Oklahoma Fashion Museum Collection

1960s Black Satin Low Heel Pumps

Acquisition #S202.16.70

Size: 10 B

Insoles imprint: Made expressly for Andrew Geller

Condition: Good, some stains

Length: 10.5", Width: 3", Heel: 1.5"

#s inside: 10 B 28-518-01



Oklahoma Fashion Museum Collection

1960s White Patent Leather Low Heel Pumps

Acquisition #S202.16.71

Size: 10 N

Length: 10.5", Width: 3", Heel: 1.5"

Insoles imprint: Made for Alberto

On Heel: Leather upper all other parts man made materials

Condition: Excellent

#s inside: 05269 2455B

Description: The photos were enhanced to bring out the detail. The shoes are white but the original photos were taken on a white background. The shoes have a white bow on the topline of the toebox.



Oklahoma Fashion Museum Collection

1960s Taupe Low Heel Pump

Acquisition #S202.16.72

Size: 8 1/2 B

Insoles imprint: Mijji

Condition: Poor (scuffs, stains, damaged)

Length: 10.25", Width: 3", Heel: 2"

#s inside: 14H14



Oklahoma Fashion Museum Collection

1960s Taupe Patent Leather Pump

Acquisition #S202.16.73

Size: 10 M

Insoles imprint: Stanley Philipson

Condition: Good

Length: 10.5", Width: 3.25", Heel: 3.25"

#s inside: 14217 126



Oklahoma Fashion Museum Collection

1960s Black Silk Pump with Rhinestones

Acquisition #S202.16.74

Size: 9 N

Insoles imprint: Andrew Geller

Condition: Fair (some loose threads, scuffs)

Length: 10.25", Width: 3", Heel: 1.5"

#s inside: 9 N 5-8014-1A5B616 / Sole: 480



Oklahoma Fashion Museum Collection

1960s Navy Blue Silk Pump with Rhinestone Buckles

Acquisition #S202.16.75

Size: 7 AAA

Insoles imprint: Mijji

Condition: Very Good

Length: 9.75", Width: 3.75", Heel: 2.75"

#s inside: 70N52 16 2B-5W8-11



Oklahoma Fashion Museum Collection

1960s Grey Patent Leather Pumps with Bow

Acquisition #S202.16.77

Size: 8 12 AAAA

Insoles imprint: Saks Fifth Avenue, Fenton Last

Condition: Fair [some stains and scuffs]

Length: 10", Width: 2.5", Heel: 2.25"

#s inside: 7 1/2 AAA A 91218 17 B/3707



Oklahoma Fashion Museum Collection

1960s Peacock Blue Dress Pumps

Acquisition # S202.16.79

Size: 7 1/2 M

Insoles imprint: Shoes by Van Arden, New York

Condition: Excellent

Length: 9.5", Width: 2.75", Heel: 2.75"

#s inside: 641123 30-1561



Oklahoma Fashion Museum Collection

1960s Low Heel Green Silk Pumps with Rhinestones

Acquisition # S202.16.80

Size: 9 N

Insoles imprint: Mijji

Condition: Excellent

Length: 10.25", Width: 3", Heel: 2"

#s inside: 2B-5W8-71 35E77



Oklahoma Fashion Museum Collection

1960s White Pumps with Red Toes and Heels

Acquisition #S202.16.81

Size: 8 1/2 B

Length: 10.5", Width: 3", Heel: 3"

Insoles imprint: Perry Chester shoe salons, Miami Beach, Florida / Customcraft wool composition insole

Condition: Very Good, a few scuff marks

#s inside: unreadable



Oklahoma Fashion Museum Collection

1960s Shocking Pink Kid Low Heel Pumps

Acquisition # S202.16.82

Size: 8 1/2 M

Length: 10", Width: 3", Heel: 2.25"

Insoles imprint: Protège, all leather except sock lining & innersole

Condition: Very good, some marks on heels

#s inside: 8 1/2 M 85938



Oklahoma Fashion Museum Collection

1960s Gold Mesh Low Heel Pumps

Acquisition #S202.16.83

Size: 8 N or Small

Insoles imprint: Made in Taiwan

Condition: Excellent

Length: 9.5", Width: 3", Heel: 2.25"

#s inside: None



Oklahoma Fashion Museum Collection

1960s White Patent Leather Pumps

Acquisition # S202.16.84

Size: 10 AAAA

Length: 9.5", Width: 3", Heel: 2.25"

Insoles imprint: Andrew Geller, man made poromeric upper, Corjam

Condition: Excellent

#s inside: 923125 1A3W806



Oklahoma Fashion Museum Collection

1960s Black Silk Pumps with Bows

Acquisition # S202.16.86

Size: 8 1/2 A

Insoles imprint: Mijji

Condition: Poor

Length: 10" Width: 3", Heel: 2"

#s inside: 81/2 a 56 E3



Oklahoma Fashion Museum Collection

1960s Rust Suede Oxfords

Acquisition # S202.16.87

Size: 8 1/2 A

Length: 9.5", Width: 3", Heel: 2.5"

Insoles imprint: Exclusive Foleys, Made in Italy

Condition: Poor

#s inside: None



Oklahoma Fashion Museum Collection

1960s Black Silk Pumps

Acquisition # S202.16.88

Size: 9

Length: 10.5", Width: 3", Heel: 2"

Insoles imprint: Dayne Taylor, sole of man made mat'l, vinyl sock, counterlining of man-made materials

Condition: Poor

#s inside: None



Oklahoma Fashion Museum Collection

1960s White Silk Pumps with Rhinestone Trim

Acquisition #S202.16.90

Size: 8 1/2 A

Insoles imprint: Mijji

Condition: Poor

Length: 10.5", Width: 2.75", Heel: 2"

#s inside: 8 1/2A 5 235W8-21 12 E 19



Oklahoma Fashion Museum Collection

1960s Brown and Black Loafers

Acquisition # S202.16.92

Size: 7 M

Length: 9.5", Width: 3", Heel: 2"

Insoles imprint: None

Condition: Very Good, some scuff marks

#s inside: None



Oklahoma Fashion Museum Collection

1960s Brown Leather Pumps

Acquisition # S202.16.93

Size: 9 M

Insoles imprint: El Corte Ingles Boutique

Condition: Very Good

Length: 10", Width: 2.75", Heel: 3"

Heel sticker: Legitima Suela De Cuero 8

#s inside: 38 07



Oklahoma Fashion Museum Collection

1960s Navy Silk Low Heel Pumps

Acquisition #S202.16.96

Size: 10 N

Insoles imprint: Stanley Philipson

Condition: Good

Length: 11", Width: 3", Heel: 2"

#s inside: 10 8 N2205 36



Oklahoma Fashion Museum Collection

1960s Bright Green Silk Low Heel Pumps with Rhinestones

Acquisition #S202.16.97

Size: 9 A

Length: 10.5", Width: 3", Heel: 2.5"

Insoles imprint: Made expressly for Andrew Geller Exquisite Footwear / Plaza Debs made exclusively for Andrew Geller

Condition: Good, slight stains

#s inside: 9 A 92A32 5 2B-5W8-71



Oklahoma Fashion Museum Collection

1960s Black Suede Pumps

Acquisition #S202.16.98

Size: 8 AA

Insoles imprint: QualiCraft

Condition: Good, insoles are damaged

Length: 10", Width: 3", Heel: 2.75"

#s inside: Unreadable



Oklahoma Fashion Museum Collection

1960s Brown Faux Reptile Suede Shoes

Acquisition #S202.16.99

Size: 8 M

Insoles imprint: Unreadable

Condition: Good

Length: 10", Width: 3", Heel: 2.75"

#s inside: 218 1 N37

Sole imprint/mark: 37



Oklahoma Fashion Museum Collection

1960s White Patent Leather Pumps with Striped Trim

Acquisition #S202.16.100

Size: 8 1/2 B

Insoles imprint: Andrew Geller

Condition: Very Good

Length: 10.5", Width: 2.75", Heel: 2.25"

#s inside: 8 1/2B 526019 1193W872

Sole mark: 480 21



Oklahoma Fashion Museum Collection

1960s Red Silk Low Heel Pumps

Acquisition #S202.16.101

Size: 10 AAA

Insoles imprint: Stanwood

Condition: Excellent

Length: ,10.75"; Width: 3", Heel: 1.5"

#s inside: 10AAA 7123 AAAAA



Oklahoma Fashion Museum Collection

1960s Black Patent Sandals with Medium Heels

Acquisition #S202.16.102

Size: 7 S

Insoles imprint: Delman Boutique

Condition: Very Good

Length: 9.5", Width: 3", Heel: 2.5"

#s inside: 7S 10-1528 E31201BR



Oklahoma Fashion Museum Collection

1960s Hot Pink Pumps with a Rhinestone Decoration

Acquisition #S202.16.103

Size: 8 1/2 A

Insoles imprint: Mijji

Condition: Good

Length: 10.5", Width: 3", Heel: 2"

#s inside: 8 1/2A 30 92C60

Sole imprint/mark: 830



Oklahoma Fashion Museum Collection

1960s Hot Pink Pumps with Decorative Toes

Acquisition #S202.16.105

Size: 7 1/2 AAAA

Insoles imprint: Herbert Levine, and Bonwit Teller

Condition: Good

Length: 10", Width: 2.75", Heel: 3"

#s inside: 7 1/2aaaa 6717 3842



Oklahoma Fashion Museum Collection

1960s Mint Green Faux Ostrich Pumps with Bow

Acquisition #S202.16.106

Length: 10.25", Width: 3", Heel: 2.75"

Size: 8B

#s inside: 8B 7332 21 LB02-230

Insoles imprints: Perry Chester Show Salons, Miami Beach, Florida; and CC Logo: CustomCraft

Condition: Good



Oklahoma Fashion Museum Collection

1960s Pale Aqua Low Heel Silk Pumps

Acquisition #S202.16.107

Length: 10", Width: 2.75", Heel: 2.25"

Size: 8 1/2A

#s inside: 8 1/2 A 79H56 13 2B-5W8-11

Insoles imprint: Mijji

Condition: Good, some stains and scuffs



These shoes go with a sequined dress and a faille coat by Pauline Trigere. They were donated by Marianne Merrick (wife of Ward S. Merrick, Jr.) from Ardmore, Oklahoma.

Donated: November 15, 1986

Acquisition #84.86.2.B



Oklahoma Fashion Museum Collection

1960s Black Satin Pumps with Rhinestone Buckles

Acquisition #S202.16.108

Size: 9N

Insoles imprint: Herbert Levine

Condition: Excellent

Length: 10.5", Width: 2.5", Heel: 1.75"

#s inside: 9N 22237 2C5a8.58



Oklahoma Fashion Museum Collection

1960s Brownish Black Low Heel Silk Pumps

Acquisition #S202.16.109

Size: 8 1/2 A

Insoles imprint: Mijji

Condition: Very Good

Length: , Width: , Heel:

#s inside: 8 1/2 a S 26E53

Sole mark: 480 17



Oklahoma Fashion Museum Collection

1960s Black Suede Pumps with Gold Piping & Low Heels

Acquisition #S202.16.110

Size: 10 S

Insoles imprint: Stanley Philipson

Condition: Very Good

Length: 10.5", Width: 2.75", Heel: 1.75"

#s inside: 10 S P417 37



Oklahoma Fashion Museum Collection

1960s Gold Peach Silk Low Heel Pumps

Acquisition #S202.16.111

Size: 8 1/2 A

Insoles imprint: Mijji

Condition: Good, some scuff marks

Length: 10.25", Width: 2.75", Heel: 2.25"

#s inside: 8 1/2A 79H56 14 2B-5WB-11



Oklahoma Fashion Museum Collection

1960s Iridescent Bone Low Heel Pumps

Acquisition #S202.16.112

Size: 7 M

Insoles imprint: 1876 Johansen so unmistakably...Made in U.S.A.

Condition: Good, some insole damage

Length: 10", Width: 2.75", Heel: 2.5"

#s inside: 7M 2 41844 26 72 301JTJ



Oklahoma Fashion Museum Collection

1960s Black Suede Low Heel Sandals

Acquisition #S202.16.113

Length: 10.25", Width: 2.75", Heel: 2.25"

Size: 9 1/2 S

#s inside: 9 1/2 S

Insoles imprint: Miramonte

Sole imprint: Genuine leather, made in Mexico

The sole of these shoes have a label attached which reads: Cia. Mira. De Calz. EMYCO, S.A.

Reg. 51 CICEF / Leather: Kid / Lining: Kid / Sole: Leather

Condition: Excellent



Oklahoma Fashion Museum Collection

1960s Pink Kid Low Heel Pumps with Embroidery

Acquisition #S202.16.114

Size: 8 1/2 AAA

Insoles imprint: Kornhauser of Palm Beach

Condition: Excellent

Length: 10.25", Width: 2.75", Heel: 2.25"

#s inside: 8 1/2 3 a 39324 133897P

Sole mark: 7130 on right shoe



Oklahoma Fashion Museum Collection

1960s Low Heel Moss Green Suede Pumps

Acquisition #S202.16.116

Size: 10 S

Insoles imprint: Sesto Meucci, Made in Italy, 211

Condition: Very Good

Length: 10.75", Width: 3", Heel: 2.25"

#s inside: None

Sole stamp: Verio Cuoio, 10 S



Oklahoma Fashion Museum Collection

1960s Black & White Spectator Pumps

Acquisition #S202.16.117

Size: 7 1/2 AA

Insoles imprint: Enosis, Made in Greece

Condition: Very Good

Length: 9.75", Width: 2.75", Heel: 2.5"

#s inside: N 173 8 779 3A



Oklahoma Fashion Museum Collection

1960s White Patent Leather Pumps

Acquisition #S202.16.118

Size: 10 AAAA

Insoles imprint: Julianelli

Condition: Good

Length: 10.75", Width: 2.75", Heel: 1.5"

#s inside: 10 4 A



Oklahoma Fashion Museum Collection

1960s Mustard Patent Leather Pumps

Acquisition #S202.16.119

Size: 9 M

Insoles imprint: Mackey Starr, New York

Condition: Good, some scuffs and stains

Length: 10", Width: 3", Heel: 2"

Stamped inside: Bonded cellulose, 8



Oklahoma Fashion Museum Collection

1960s Gold Sandals with Rhinestones

Acquisition #S202.16.120

Length: 9.25", Width: 3", Heel: 2.5"

Size: 7 S

#s inside: E334519R 89-1518 7S

Insoles imprint: Delman, New York, London, Paris

Condition: Poor, some insole damage



Oklahoma Fashion Museum Collection

1960s Gold Pump with Cut Out on Top

Acquisition #S202.16.121

Length: 9.75", Width: 2.75", Heel: 2.5"

Size: 7 1/2 A

#s inside: 7 1/2A 21A63 14 89533

Insoles imprint: Jaks Fifth Avenue Fenton Last

Condition: Excellent



Oklahoma Fashion Museum Collection

1960s Black Pumps with Rhinestone Pilgrim Buckles

Acquisition #S202.16.122

Length: 9.75", Width: 2.75", Heel: 3"

Size: 7 1/2 AAAA

#s inside: 7 1/2aaaa C3245

Insoles imprint: Herbert Levine

Condition: Good



Oklahoma Fashion Museum Collection

1960s Black Silk Low Heel Pumps

Acquisition #S202.16.124

Length: 10.25", Width: 2.75", Heel: 2.5"

Size: 9 A/AAA

#s inside: 9 A/AAA 07276 16

Insoles imprint: Town & Country Shoes, All Man Made Materials

Condition: Excellent



Oklahoma Fashion Museum Collection

1960s Black Calf Pumps with Pilgrim Buckles

Acquisition #S202.16.125

Size: 7 AAA

Insoles imprint: Andrew Geller

Condition: Excellent

Length: 9.5", Width: 2.5", Heel: 2.25"

#s inside: 7AAA 673096 1A1A806



Oklahoma Fashion Museum Collection

1960s Black Lace Low Heel Pumps

Acquisition #S202.16.126

Size: 10 M

Insoles imprint: made expressly for Andrew Geller

Condition: Excellent

Length: 10.75", Width: 3", Heel: 1.5"

#s inside: None



Oklahoma Fashion Museum Collection

1960s Black Silk Low Heel Pumps

Acquisition #S202.16.127

Size: 8 1/2 B

Insoles imprint: Mijji

Condition: Poor, faded and worn

Length: 10.25", Width: 3", Heel: 2"

#s inside: 8 1/2B 7 14H14



Oklahoma Fashion Museum Collection

1960s Pewter Pumps with Matching Purse

Acquisition #S202.16.128

Size: 7 1/2 N

Insoles imprint: Herbert Levine

Condition: Excellent

Length: 9.75", Width: 2.75", Heel: 2.5"

#s inside: 7 1/2N 22225 2C1F7.52



P202.16.49 Purse



1960s~1970s Shoes

Oklahoma Fashion Museum Collection

1960s-70s Cream Calf Heeled Sandals

Acquisition #S202.16.61

Size: 10 S

Length: 10.25", Width: 3", Heel: 3.25"

Insoles imprint: Amalfi by Rangoni, made in Florence Italy Buriano

Condition: Very Good, some slight stains #s inside: None / Sole imprint: 10 S All leather, made in Italy



Oklahoma Fashion Museum Collection

1960s-70s Brown & White Spectator Pumps

Acquisition # S202.16.78

Size: 9 AA/AAAA

Length: 10", Width: 3", Heel: 2.5"

Insoles imprint: Gamins

Condition: Good, some scuff marks

Stamped inside: 42912 / "Man made sock lining"



Oklahoma Fashion Museum Collection

1960s-70s Gold Wedge Sandals with Plastic Vamp

Acquisition #S202.16.130

Length: 9.5", Width: 3.25", Heel: 2.5"

Size: 9-10 XL

#s inside: None

Soles imprint: Bertlyn 22, New York, N.Y., XL. 9-10, 1234, All Man Made Mat., Made in U.S.A.

Condition: Very Good



Oklahoma Fashion Museum Collection

1960s-70s Brown Suede Pumps

Acquisition #S202.16.131

Size: 7 1/2 AAAA

Insoles imprint: La Belle Originals

Condition: Good

Length: 10.25", Width: 3", Heel: 2.75"

#s inside: 71/2AAAA 11021 244D27



Oklahoma Fashion Museum Collection

1960s-70s Navy and Camel Casual Sandals

Acquisition #S202.16.133

Size: 9

Insoles imprint: Naturalizer, Pollywoods

Condition: Pristine, never worn

Length: 10.5", Width: 3.25", Heel: 2.5"

#s inside: None



Oklahoma Fashion Museum Collection

1960s-70s White Lace Pumps

Acquisition #S202.16.158

Size: 7 B

Insoles imprint: Peacocks

Condition: Fair, warped insoles

Length: 10.25", Width: 2.75", Heel: 3"

#s inside: 7B 0042 11407-03 2900W 006



1970s Shoes

Oklahoma Fashion Museum Collection

1970s Black Suede Slings

Acquisition # S202.16.27

Size: 8 1/2 AAAA

Length: 8", Width: 3", Heel: 3.75"

Instep imprint: Bruno Magli, BM Bologna, made in Italy, *Tomaia Pelle*

Condition: Very Good

#s inside: 012 09 511 8N

Description: These black suede slings have a brass metal piece with the loops which the front and the straps are attached to. The ankle straps have brass buckles.



Oklahoma Fashion Museum Collection

1970s Black Patent Leather High Heel Sandal with Gold Chain

Acquisition #S202.16.51

Size: 6M

Length: 9.25", Width: 2.75", Heel: 4"

Insoles imprint: Garolini exclusively, Made in Italy

Condition: Excellent

#s inside: none



Oklahoma Fashion Museum Collection

1970s Dark Green Peep Toe Platform Heels

Acquisition #S202.16.53

Size: 6 1/2 M

Insoles imprint: Nina

Condition: Very Good

Length: 9.5", Width: 2/5", Heel: 4"

Inside imprint: Leather upper, leather sole, made in Spain

#s inside: 153 26 6 1/2 M / 17512 27



Oklahoma Fashion Museum Collection

1970s Black Patent Leather with Beige Wedge Heels

Acquisition #S202.16.55

Size: 9 N

Length: 9.75", Width: 2/75", Heel: 2.75"

Insoles imprint: None

Condition: Fair

#s inside: 6207 464 723

Description: The uppers on these shoes are in good condition, but the heels have stains on the back and towards the bottom.



Oklahoma Fashion Museum Collection

1970s Cream Calf High Heeled Sandals

Acquisition #S202.16.60

Size: 8 1/2 A

Insoles imprint: Rene' for Shoe Biz

Condition: Fair

Description: These shoes were worn with a short wedding dress, acquisition #98.86.22.A.

Owned by: Rita Sue Frank Donated: Dec. 22, 1986

Length: 9.75", Width: 2.75", Heel: 4"

Sole imprint: Made in Italy

#s inside: 38 1/2 on strap



Wedding Dress

Acq. #98.86.22.A



Oklahoma Fashion Museum Collection

1970s Green Leather Peep Toe Platform Sandals with Cork Heels

Acquisition #S202.16.63

Owned by: Rita Sue Frank Donated: Dec. 22, 1986

Size: 8 1/2 N

Length: 10", Width: 3", Heel: 4"

Insoles imprint: Unreadable

Condition: Excellent

#s inside: None

Description: These shoes go with a pants outfit that has white silk pants, a green and white long striped top, and a string belt (acquisition #98.86.22.O). The shoes have a crisscross pattern on the top.



Outfit #98.86.22.O



Oklahoma Fashion Museum Collection

1970s Blue Wedge Sandals

Acquisition #S202.16.64

Size: 10 N

Insoles imprint: Monil Amalfi by Rangoni

Condition: Excellent

Length: 10.25", Width: 3", Heel: 2.5"

Sole imprint: 10 N All leather made in Italy

#s inside: None



Oklahoma Fashion Museum Collection

1970s Black and Wine Leather Low Heel Sandals

Acquisition #S202.16.69

Size: 10 S

Length: 10", Width: 3", Heel: 2.25"

Insoles imprint: Bartali Amalfi by Rangoni, Made in Florence Italy

Condition: Excellent

#s inside: None / Sole imprint: All Leather



Oklahoma Fashion Museum Collection

1970s Pink Suede Sandals

Acquisition #S202.16.76

Size: 7 1/2 AA

Insoles imprint: footflairs

Condition: Fair (insoles are coming loose)

Length: 9.5", Width: 3", Heel: 2.75"

#s inside: L76567 7 1/2 B/AA 15



Oklahoma Fashion Museum Collection

1970s Red, White & Blue Spectator Pumps

Acquisition #S202.16.89

Size: 8 AA

Length: 10", Width: 2.75", Heel: 2.25"

Insoles imprint: Gamins,

Condition: Very Good, some scuff marks

Stamped inside: 9AA/AAAA 43174 Manmade Sock



Oklahoma Fashion Museum Collection

1970s Yellow Espadrills

Acquisition #S202.16.132

Length: 10.25", Width: 3", Heel: 2.25"

Size: 10 N

#s inside: 69287 10N 6670 37358

Insoles imprint: Browsabouts

Condition: Pristine

These shoes have never been worn and still have the original sticker inside which says: 0464 PIX PRICE \$13.00 Compare at \$24.00 278243-1 Size 1003 10N



Oklahoma Fashion Museum Collection

1970s Rust Calf T-Strap Shoes

Acquisition #S202.16.143

Size: 7 1/2 N

Insoles imprint: La Belle Original

Condition: Very Good

Length: 9.5", Width: 3", Heel: 3"

#s inside: 7 1/2 S 213



Oklahoma Fashion Museum Collection

1970s Wine High Heeled Pumps

Acquisition #S202.16.145

Size: 8 N

Insoles imprint: None

Condition: Very Good

Length: 10", Width: 2.75", Heel: 3.5"

#s inside: 8 9 1



Oklahoma Fashion Museum Collection

1970s Brown Naturalizer High Heeled Sandals

Acquisition #S202.16.147

Length: 10.5", Width: 2.74", Heel: 3"

Size: 10 M

#s inside: 10M 36071

Insoles imprint: Naturalizer, Pollywoods

Condition: Pristine, never worn

Original price tag is on the sole for \$9.99, with "U 7426" also printed on the tag.



Oklahoma Fashion Museum Collection

1970s-80s Taupe Low Heel Pumps

Acquisition #S202.16.148

Size: 10 AAA

Insoles imprint: All Leather, Evan-Picone, Made in Italy

Sole imprint: ALL LEATHER, Made in Italy, 10AAA

Condition: Very good, slight stains and scuffs

Length: 10.5", Width: 3", Heel: 2"

#s inside: None



Oklahoma Fashion Museum Collection

1970s Black Velvet Pump with Rhinestones

Acquisition #S202.16.149

Size: 7 A

Insoles imprint: Charles Jourdan, Paris

Condition: Excellent

Length: 9.5", Width: 3", Heel: 2.25"

#s inside: 7 A 215563

Sole imprint: Made in France, and leather symbol



Oklahoma Fashion Museum Collection

1970s Light Navy Blue High Heel Pumps

Acquisition #S202.16.151

Length: 10.25", Width: 2.75", Heel: 3.25"

Size: 8 N

#s inside: 1600 755391 15109

Insoles imprint: Quality Footwear Fashions stamped over Tweedies Alluring Footwear

Condition: Good



Oklahoma Fashion Museum Collection

1970s Green Kid Mules

Acquisition #S202.16.152.A

Size: 7 1/2 N

Insoles imprint: Amalfi by Rangoni Made in Italy Nipote

Condition: Good

Length: 9.5", Width: 2.75", Heel: 2.75"

#s inside: None



Oklahoma Fashion Museum Collection

1970s Beige Kid Mules

Acquisition #S202.16.152.B

Size: 7 1/2 N

Insoles imprint: Amalfi by Rangoni Made in Italy Nipote

Condition: Good

Length: 9.5", Width: 2.75", Heel: 2.75"

#s inside: None



1970s~1980s Shoes

Oklahoma Fashion Museum Collection

1970s-80s Leather Beige Loafers

Acquisition # S202.16.14

Size: 10 AAA

Instep imprint: Evan-Picone, Made in Italy, All Leather

Condition: Very Good

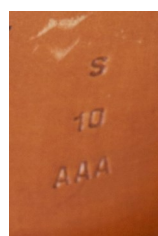
Description: These leather beige loafers have two leather tassels on each shoe and were made in Italy.

Color: Beige

Length: 10.5", Width: 3", Heel: 1"

Sole imprint/mark: Made in Italy, S 10 AAA

#s inside: S10 650230601



Oklahoma Fashion Museum Collection

1970s-80s Wine Suede High Heeled Sandals

Acquisition #S202.16.46

Donated by: Rita Sue Frank, Dec. 22, 1986

Size: 8 1/2 A

Length: 10", Width: 2/75", Heel: 4"

Insoles imprint: Shoe Biz, Made in Italy / Sole imprint: Genuine leather symbol—Vero Cuoio

Condition: Excellent

#s inside: None



Oklahoma Fashion Museum Collection

1970s-80s Taupe Ankle Strap High Heels

Acquisition #S202.16.57

Size: 7 1/2 N

Length: 9.75", Width: 2.75", Heel: 3.5"

Insoles imprint: Del Nita

Condition: Excellent

#s inside: J 6852

Description: A two-toned taupe shoe with smooth leather and suede leather on the toe box. The ankle straps have gold tone buckles.



Oklahoma Fashion Museum Collection

1970s-80s Black Satin High Heel Sandals with Rhinestones

Acquisition #S202.16.85

Size: 8N

Length: 10", Width: 3", Heel: 4"

Insoles imprint: Mocle;s

Condition: Poor, many flaws

#s inside: 90 N 38205



Oklahoma Fashion Museum Collection

1970s-80s Silver Slings with Rhinestones on Vinyl

Acquisition #S202.16.146

Size: 8 1/2 N

Insoles imprint: Amano, Made in USA Empress

Condition: Very Good

Length: 9.75", Width: 2.75", Heel: 3.5"

#s inside: 8 1/2N K 2526 95 713



Oklahoma Fashion Museum Collection

1970s-80s Taupe Low Heel Pumps

Acquisition #S202.16.148

Size: 10 AAA

Insoles imprint: All Leather, Evan-Picone, Made in Italy

Sole imprint: ALL LEATHER, Made in Italy, 10AAA

Condition: Very good, slight stains and scuffs

Length: 10.5", Width: 3", Heel: 2"

#s inside: None



Oklahoma Fashion Museum Collection

1970s-80s Rust T-Strap Shoes with Matching Purse

Acquisition #S202.16.153

Size: 7 1/2 AAAA

Insoles imprint: Salvatore Ragamo

Condition: Fair

Length: 9.75", Width: 2.75", Heel: 2.75"

#s inside: GU 747 375 7 1/2 AAAA

Sole Imprint: Leather Sole Made in Italy Leather Upper



Purse #P202.16.22 by Ruth Saltz



Oklahoma Fashion Museum Collection

1970s-80s Royal Blue Calf Heeled Sandals

Acquisition #S202.16.155

Size: 10 N

Insoles imprint: Amalfi by Rangmi Segno

Condition: Pristine

Length: 10.5", Width: 3", Heel: 2.5"

#s inside: N 0

Sole Imprint: 10N All Leather Made in Italy



Oklahoma Fashion Museum Collection

1970s-80s Black Dressy Suede Sandals with Gold Trim

Acquisition #S202.16.156

Length: 10.5", Width: 3", Heel: 2.5"

Size: 10 N

#s inside: N 0

Insoles imprint: PINATO Amalbi by Rangoni Made in Florence Italy

Sole imprint: 10N All Leather Made in Italy

Condition: Very Good



*These shoes are Rita Sue
Frank's - worn w/ white
organza blouse + long black
skirt. Seen w/ #98.86.22. C*



Oklahoma Fashion Museum Collection

1970s-80s Navy Blue Silk Sandals

Acquisition #S202.16.157

Size: 10 S

Insoles imprint: Stanley Philipson

Condition: Pristine

Length: 10.25", Width: 2.75", Heel: 3"

#s inside: 103 D 1172

Sole imprint: 480 33 (on R)



1980s~90s Shoes

Oklahoma Fashion Museum Collection

1980s Royal Blue and White High Heel Pumps

Acquisition #S202.16.48

Size: 7 1/2 AA

Insoles imprint: Evins, Made in Italy, Tara

Condition: Fair, discolorations and marks

Length: 9.75", Width: 2.5", Heel: 3"

Sole marks: Leather symbol, Vera Cubio, made in Italy

#s inside: None



Oklahoma Fashion Museum Collection

1980s Navy Blue Leather Pumps

Acquisition #S202.16.104

Length: 10", Width: 3", Heel: 3"

Size: 8 1/2 AA

#s inside: AA 8 1/2 11500N.4022

Insoles imprint: Bruno Magali, Made in Italy, Bologna / Tomaia Pelle

Condition: Good, some scuff marks



Oklahoma Fashion Museum Collection

1980s Black Calf Low Heel Pumps

Acquisition #S202.16.159

Size: 10 S

Insoles imprint: Michael

Condition: Good

Length: 10.5", Width: 3", Heel: 2"

#s inside: 512091 10 S



Oklahoma Fashion Museum Collection

1990s Black Velvet Pumps

Acquisition #S202.16.161

Size: 7 1/2"

Insoles imprint: Kf Ltd

Condition: Excellent

Length: 10", Width: 2.75", Heel: 2"

#s inside: B 3-32855-6-023-75M 52507A



Label on original box



Oklahoma Fashion Museum Collection

1990s Black Suede Mary Janes

Acquisition #S202.16.162

Length: 10", Width: 3", Heel: 2"

Size: 8 M

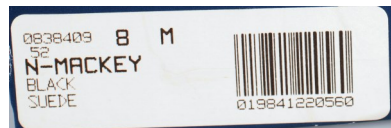
Printed Inside: Man Made Sole Made in Brazil N Mackey A

Insoles imprint: Spa Nine West

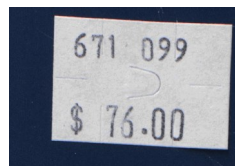
Sole imprint: All leather upper, 8 M

Condition: Good

Original price: \$76.00



Original Box Labels



Oklahoma Fashion Museum Collection

1980s Amalfi Beige T-Strap Sandals

Acquisition #S202.18.1

Length: 9", Width: 1.5-3", Heel: 2"

Size: 8N

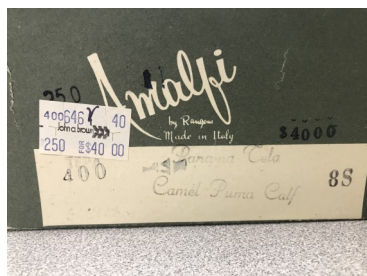
#s inside: none

Insoles imprint: All leather / made in Italy, made in Florence, Italy

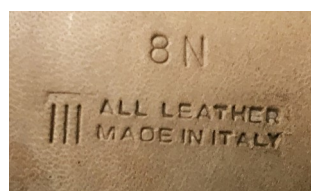
Sole Imprint: 8N, all leather, made in Italy

Condition: Pristine

Description: These sandals have pink, blue, orange, green and red embroidery on top of cream fabric. The insoles are a light mint leather color.



Original box



Sole Imprint



Inset Imprint

Oklahoma Fashion Museum Collection

1980s Amalfi Hot Pink Sandals by Rangoni

Acquisition #S202.18.2

Size: 8 1/2 S

Insoles imprint: Faema, Amalfi b Rangoni

Condition: Pristine, never worn

Description: A hot pink leather sandal. It has 3 straps on the top with a pink button where they join. The heel strap has a gold tone buckle.

Length: 9.5", Width: 2.75", Heel: 3.75"

#s inside: None

Sole stamps: Amalfi, 8 1/2 S, Made in Italy



Oklahoma Fashion Museum Collection

1980s Three Tone Suede Loafers by Jakki

Acquisition #S202.18.3

Length: 10", Heel: 1.5"

Size: 8

#s inside: 944g53M-106177 4431 8S

Insoles imprint: Semelle CUIR Veritable, made in Greece, AAA, 8, 431

Condition: Pristine

Description: These suede loafers are in black, grey, and dark orange colors. The heel also has the 3 colors in horizontal lines. The top toe section has gold tone metal studs. The underside has stitching where the black suede meets. These shoes have never been worn.



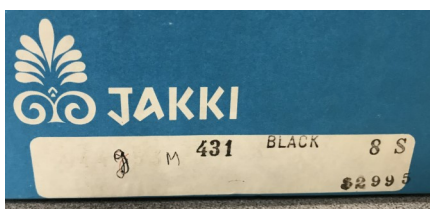
Insoles imprint



Numbers inside



Sole imprint



Original Box

Oklahoma Fashion Museum Collection

1980s Cosmopolitans Multicolored Floral Pumps & Matching Purse

Acquisition #S202.18.4

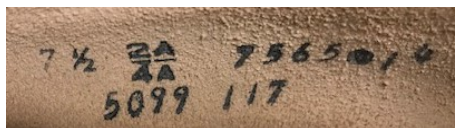
Size: 7 1/2

Insoles imprint: Cosmopolitans a vitality shoe

Condition: Pristine, never worn

Length: 9", Width: 2.75", Heel: 2"

#s inside: 7565 14 2A 4A 5099 117



Oklahoma Fashion Museum Collection

1980s-90s Tan Low Heels Shoes with Gold Decorations

Acquisition #S202.16.160

Size: 10 M

Insoles imprint: Genia, made in Spain

Condition: Very good, scuff at toe

Length: 10.75", Width: 3", Heel: 1.5"

#s inside: None

Sole imprints: Made in Spain 20 M



Boots in the Collection

Oklahoma Fashion Museum Collection

1900 Lace Up Boots

Acquisition #S202.16.3

Size: 7

Instep imprint: None

Condition: Very Good

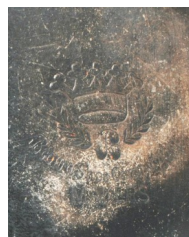
Description: These black leather boots have 16 metal eyelets for black laces and canvas lining. The tongue on the right shoe is torn.

Color: Black

Length: 10" Width: 2.75" Heel: 1.5" Height: 9.5"

Sole imprint/mark: Brown Shoe Company Makers

#s inside: 435PT 17108



Imprint on sole



Oklahoma Fashion Museum Collection

1910 Lace Up Boot

Acquisition #S202.16.1

Size: 6

Instep imprint: Bench Made Volk's

Condition: Very Good

Color: Black & Tan

Length: 10" Width: 2 3/4" Heel: 2.5" Height: 10.5"

Sole imprint/mark: none

#s inside: 2500 2557 1042



Oklahoma Fashion Museum Collection

1910 Lace Up Boots

Acquisition #S202.16.5

Size: 6

Inside imprint: T.W. Coverdale [Tulsa, Okla.]

Condition: Good

Color: Camel

Length: 11" Width: 2.75" Heel: 3"

Sole imprint/mark: None

#s inside: 445-22025

Description: These camel colored lace up boots have 21 grommets for lacing, brown laces, a tongue, and darker brown french heels which are in a dark brown. The inside has leather around the top and along the grommet edges. The interior is lined with canvas fabric. There is some cracking where the heels are attached.



Oklahoma Fashion Museum Collection

1960s White Patent Leather Knee High Boots

Acquisition #S202.16.129

Length: 11.75", Width: 3.25", Heel: 2.25"

Size: 10

#s inside: None

Tag at collar: Size 10, Stock No., All Man-Made Materials

Condition: Poor

Sole Imprint: 10 Korea, 13

These boots have an inside zipper and are badly stained. The shoes are white leather but the uppers are some type of fabric.



Stains



Oklahoma Fashion Museum Collection

1960s White Go-Go Knee High Boots

Acquisition #S202.16.136

Size: 6—6 1/2

Insoles imprint: None

Length: 10.5", Width: 3", Heel: 2.5"

#s inside: None

Sole Imprint: Battani, 6-6 1/2

Condition:



Oklahoma Fashion Museum Collection

1960-70s Black Suede Lace-Up Knee High Boots

Acquisition #S202.16.134

Size: 9

Insoles imprint: None

Condition: Very Good

Length: 10", Width: 3", Heel: 2.5"

Inside tag: Battani



Oklahoma Fashion Museum Collection

1960s-70s Navy Blue Thigh High Boot with Knit Shaft

Acquisition #S202.16.138

Length: 10.25", Width: 3", Heel: 2"

Size: 6 1/2 M

#'s inside: 6 1/2 M 07559 45050

Fabric tag at collar: Golo, 6 1/2 M 07559 45050

Condition:



Oklahoma Fashion Museum Collection

1960s-70s Brown Suede Knee High Boots

Acquisition #S202.16.139

Length: 11.5", Width: 3.5", Heel: 2"

Size: 9 1/2 N

Inside tag at collar: Bandolino, Made in Italy, 9 1/2 N

Condition: Very Good



Oklahoma Fashion Museum Collection

1960s-70s White Over-the-Knee Boots

Acquisition #S202.16.140

Size: 10 N

Fabric tag at collar: Sbicca Californians

Condition: Very Good

Length: 11.75", Width: 3.25", Heel: 1.5"

#s inside: 10 N 44724

Heel cap: BF Goodrich



Oklahoma Fashion Museum Collection

1960s-70s Faux Snake Skin Over-the-Knee Boots

Acquisition #S202.16.142

Length: 11", Width: 3", Heel: 2.5"

Size: 7 1/2 N

#s inside: 7 1/2 N 84559 52440

Insoles imprint: Avon / Fabric tag at collar: Sak's Fifth Avenue, Upper of Man-Made Material

Condition: Fair, discoloration at foot and heel



Oklahoma Fashion Museum Collection

1970s Brown Suede Knee High Boots with Zipper

Acquisition #S202.16.154

Length: 11" , Width: 3" , Heel: 3"

Size: 8

#s inside: None

Insoles imprint: None

Sole Imprint: The Golden Rule Shoe, Fashion at the Right Price,

Made in Italy, All Man-Made Materials, 8

Condition: Very Good



Oklahoma Fashion Museum Collection

1970s-80s Taupe Mid-Calf High Heeled Peter Pan Boots

Acquisition #S202.16.141

Length: 12", Width: 3", Heel: 4"

Size: 9 S

#s inside: 9 S 25956 3 39

Insoles imprint: None

Condition: Good, some scuff marks

