

# Accessories (Scarves, Jewelry, Belts, Fans & Feathers, Umbrellas)



Scarves



Pins



Bracelet



Necklace with Earrings



Earrings



Pink Poodle Umbrella



1920s Ostrich Fan



Belt

in the  
Oklahoma Fashion Museum Collection  
at the  
University of Central Oklahoma

Compiled and written by Mary Huffman, Coordinator of Grants & Contracts  
College of Education & Professional Studies

## **Forward by Mary Huffman**

### **History of the Collection**

In the late 1950s, several prominent Oklahoma City women in fashion-related businesses initiated contacts with The Fashion Group International, Inc. headquartered in New York. As a result, a new regional “Fashion Group, Inc. of Oklahoma City (OKC Fashion Group)” was established in the fall of 1958.

One of the goals of the OKC Fashion Group was to collect garments in order to establish a “designer costume collection” covering several decades and representing significant changes in fashion design. They collected garments and accessories from prominent women in Oklahoma. The collection was to be used by fashion marketing, costume design, drama, art, and history students. The items in the collection range from the late 1800s to the 1970s.

The group began collecting designer garments in 1984. In 1985 Lillian Russell began cataloging each item in a ledger. The ledger was hand written, and each clothing item had a hand written tag on it with some basic information. (A copy of the original acquisition tag is included on the following pages.)

In 1989, the OKC Fashion Group disbanded and donated the entire collection to Central State University, which is now called the University of Central Oklahoma (UCO). Even though the group disbanded, the ledger was maintained through July of 1994. The collection consists of over 800 items of clothing, 300+ hats, 151 pairs of shoes, 12 pairs of boots, 50+ purses, some jewelry, gloves and miscellaneous items.

The collection was kept in storage for many years and used occasionally for class instruction in the fashion marketing program. In 2014, I began the task of inventorying the collection, documenting details of each item and photographing some of the items and details..

It is now 2019 and everything has been photographed, documented and inventoried. It is my sincere hope that others will find this information helpful. Whether you’re interested in fashion design, fashion history, women’s history, the history of Oklahoma City, or are researching the people in the societal world, there is something in this catalog for many to use.

### **Catalog Arrangement**

The following pages are arranged by category and includes:

- 29 scarves
- 8 bracelets
- 33 necklaces
- 16 pins
- 3 shoe buckles
- 2 dress clips
- 31 belts
- 3 fans
- 1 feather shawl



- 1 parasol
- 2 umbrellas

None of the items in the catalog were previously acquisitioned or logged in the original inventory. As a result, I do not know who donated them.

Some of the photographs were taken in the photography studio in the Mass Communications Building on the UCO campus under the direction of Mr. Jesse Miller, a professor of fashion photography. The student photographers were Kelsey Smith and Zach Hunter. These students were hired through a U.S. Department of Education grant called “Student Transformative Learning Record” (STLR) for this project. I took the detail photos and all of the photos for the jewelry in my office.

I hope the information in this catalog will be of interest to others in various professions.

Mary Huffman, Coordinator of Grants & Contracts  
College of Education & Professional Studies  
University of Central Oklahoma  
Edmond, Oklahoma  
October, 2019

## Table of Contents

<b>Scarves</b>	<b>Page</b>
SC209.17.1	Black & white silk scarf of Hawaii..... 2
SC207.17.2	1950s Silk scarf by G. Prusa..... 3
SC207.17.3	Pink silk key scarf by Ciro's Ltd..... 4
SC207.17.4	Navy, green & white scarf by Yves Saint Laurent..... 5
SC207.17.5	Silk portrait scarf by M. Campbell..... 6
SC207.17.6	Ocean scene scarf by Gucci & V. Accomo..... 7
SC207.17.7	Black, white & yellow scarf by Alfred Angelo..... 8
SC207.17.8	1970s Batik scarf by Patrick Poivre de la Freta..... 9
SC207.17.9	Black, tan, & red long chiffon scarf by Echo..... 10
SC207.17.10	1970s Navy & white River God silk scarf by Sant' Angelo. 11
SC207.17.11	Orange & navy blue polka dot silk scarf..... 12
SC207.17.12	White chiffon scarf with brown polka dots..... 13
SC207.17.13	Long peach chiffon scarf..... 14
SC207.17.14	Yellow chiffon scarf..... 15
SC207.17.15	Red chiffon scarf..... 16
SC207.17.16	Magenta silk scarf..... 17
SC207.17.17	Stained glass patterned scarf..... 18
SC207.17.18	Brown chiffon scarf..... 19
SC207.17.19	Ecru chiffon scarf with large purple spots..... 20
SC207.17.20	Lavender chiffon scarf..... 21
SC207.17.21	Sheer green scarf with scalloped edges..... 22
SC207.17.22	Green chiffon scarf with raised green circles..... 23
SC207.17.23	Long sheer black scarf..... 24
SC207.17.24	Sheer chiffon scarf in pastel colors..... 25
SC207.17.25	Long gold open weave scarf..... 26
SC207.17.26	Black & gold scarf or shawl..... 27
SC207.17.27	Long black lace scarf or shawl..... 28
SC207.17.28	Black triangular scarf or shawl..... 29
SC207.17.29	Multicolored hand woven scarf or shawl..... 30

<b>Jewelry</b>	<b>Page</b>
<i>Bracelets</i>	
#1	Faux pearls in 4 rows..... 32
#2	Bracelet with 5 rows of clear rhinestones..... 33
#3	Bracelet with 3 rows of clear round rhinestones.....34
#4	Bracelet with clear rhinestones on gold.....35
#5	Aurora Borealis rhinestone bracelet with 5 topaz crystals.....36
#6	Aurora Borealis butterfly bracelet..... 37
#7	Green bracelet with white beads and gold inserts..... 38
#8	Blue bracelet with white beads and gold inserts.....39

**Jewelry****Page***Earrings*

#1	Gold, black, mauve & burgundy beaded earrings.....	41
#2	Faux pearl clip-on earrings with matching necklace.....	42
#3	White coral bead clip-ons with matching necklace.....	43
#4	Single pearl earrings on gold posts, screw-on.....	44
#5	Square earrings with 9 clear rhinestones.....	45
#6	Blue rhinestone earrings, clip-on, with matching necklace.....	46
#7	Rhinestone earrings with 4 rhinestones, and matching necklace.....	47
#8	Clip-on earrings with green round stones with matching necklace..	48
#9	Silver loop earrings with 3 loops, screw-on.....	49
#10	Weiss clip-on clear rhinestone earrings.....	50
#11	Clip-on topaz semi-circular earrings.....	51
#12	Clear rhinestones in 3 rows, screw-on.....	52
#13	Signed Coro earrings with large center clear rhinestone.....	53
#14	Clear rhinestones in 2 overlapping circles, clip-on.....	54
#15	1940s Screw-on clear rhinestone drop earrings in flower design....	55
#16	Napier gold tone wide hoop earrings.....	56
#17	Round flower earrings with faux pearls and rhinestones.....	57
#18	Blue & pink rhinestone drop earrings.....	58
#19	Oval gold tone earrings by Les Bernard.....	59
#20	Dauplaise square black earrings.....	60
#21	Signed Trifari large round silver clip-on earrings.....	61
#22	Screw-on drop earrings with 3 square, clear crystals.....	62
#23	Wide shiny gold earrings, drop or clip-on.....	63
#24	Screw-on silver earrings with 3 loops.....	64
#26	Rhinestone earrings with 1 large pearl, has a matching necklace...	65

*Necklaces*

#1	Four strand faux pearl necklace, has a matching bracelet.....	67
#2	Single strand of mauve colored beads.....	68
#3	3 strand necklace with gold, black, mauve & burgundy beads.....	69
#4	Silver necklace with brown stones & a matching ring.....	70
#5	Double strand of whites summer beads.....	71
#6	Long strand of white beads.....	72
#7	Double strand of faux pearls with small silver beads.....	73
#8	3 strand white faux pearl choker with a silver bar in the middle.....	74
#9	Single strand necklace with white coral beads.....	75
#10	Single strand of light brown faux pearls.....	76
#11	3 strand white, coral & turquoise choker by Nettie Rosenstein.....	77
#12	Light green pearl necklace with a silver clasp.....	78
#13	Single strand necklace with blue plastic round beads.....	79
#14	Single strand necklace with various shaped & colored blue beads..	80
#15	Long single strand of toffee colored beads.....	81
#16	Monet3 strand gold chain necklace with a bangle in the middle....	82
#17	Rhinestone choker with 2 rows of square rhinestones.....	83

<b>Necklaces (con't)</b>		<b>Page</b>
#18	Rhinestone necklace designed by Weiss.....	84
#19	Blue rhinestone necklace.....	85
#20	Silver drop necklace with clear rhinestones.....	86
#21	Green rhinestone necklace.....	87
#22	Single strand clear rhinestone necklace.....	88
#23	Clear rhinestone necklace.....	89
#24	Coro gold chain necklace with bronze beads.....	90
#25	Single strand necklace with multicolored oval beads and gold....	91
#26	Topaz rhinestone necklace with gold tone backing.....	92
#27	Two strand necklace with yellow, green & amber colored stones..	93
#28	Necklace with alternating taupe & amber colored beads.....	94
#29	Necklace with large brown, dark brown & gold beads.....	95
#30	Double strand necklace with large green & gold beads.....	96
#31	Single strand necklace with black and silver beads.....	97
#32	Dauplaise signed necklace with large bronze & black beads.....	98
#33	Rhinestone necklace with 13 large pearls.....	99

*Pins*

#1	Red rosebud enamel pen with stem and leaves.....	101
#2	Pink rosebud enamel pin with stem and leaves.....	101
#3	Trifari red rose pin with rhinestones.....	102
#4	Red, Green & Gold Florenza maltese cross.....	103
#5	Round brass pin with a green stone in the middle.....	104
#6	Square rhinestone pin with 2 layers of clear rhinestones.....	105
#7	Sunburst shaped gold pin with a large round topaz rhinestone.....	106
#8	Butterfly pin with blue rhinestones.....	107
#9	Clear crystal rhinestone pin in a circular pattern.....	108
#10	Round pin with a brown center stone surrounded by leaves.....	109
#11	Pin with topaz and light green rhinestones.....	110
#12	Nautical rope & anchor gold tone pin with rhinestones.....	111
#13	Curved pin with 2 rows of clear rhinestones.....	112
#14	Brown mink pin with a gold leaves.....	113
#15	Round silver pin with clear rhinestones.....	114
#16	Antique metal pin with green stones.....	115

*Shoe Buckles*

#1	Pair of cut steel buckles with black leather backing.....	117
#2	Pair of rhinestone buckles with black fabric background.....	118
#3	Single cut steel shoe buckle.....	119

*Dress Clips*

#1	Pair of rhinestone dress clips.....	121
#2	One rhinestone dress clip.....	122



**Accessories****Page***Belts*

B210.17.01	White patent leather belt.....	124
B210.17.02	Western style thin brown faux leather belt.....	125
B210.17.03	Christian Dior off-white patent leather belt.....	126
B210.17.04	Thin black faux snakeskin belt.....	127
B210.17.05	Orange faux leather belt with gold designs & beads.....	128
B210.17.06	Purple, orange & gold fabric belt.....	129
B210.17.07	Turquoise & silver fish scale stretch belt.....	130
B210.17.08	White fish scale stretch belt.....	131
B210.17.09	Silver & white fish scale stretch belt.....	132
B210.17.10	Light blue fabric belt with rhinestone buckle.....	133
B210.17.11	Tan faux leather belt with 4 coins & rhinestones.....	134
B210.17.12	Gold faux leather belt.....	135
B210.17.13	White leather belt with gold, black & red designs.....	136
B210.17.14	Blue green fabric belt.....	137
B210.17.15	Green leather belt with Coats of Arms.....	138
B210.17.16	Brown, orange, & tan fabric belt with rhinestone buckle.....	139
B210.17.17	Copper tone conch belt.....	140
B210.17.19	Black & white belt with gold designs.....	141
B210.17.20	Thin black patent leather belt.....	142
B210.17.21	White leather belt with brass buckle.....	143
B210.17.22	Burgundy leather belt by Ben Reig.....	144
B210.17.23	Thin green fabric belt.....	145
B210.17.24	White faux leather belt with rhinestone buckle.....	146
B210.17.25	Black patent leather belt by Norman Norell.....	147
B210.17.26	Maroon leather belt.....	148
B210.17.27	Wide white faux leather belt.....	149
B210.17.28	Cream beaded belt made in Hong Kong.....	150
B210.17.29	Gold faux snakeskin belt by Geoffrey Beene.....	151
B210.17.30	Pink Ultrasuede belt.....	152
B210.17.31	Cobra snake skin belt.....	153

*Fans & Feathers*

F206.17.1	1920s Orange ostrich feather fan.....	155
F206.17.2	1920s Blue ostrich feather fan.....	156
F206.17.3	1860s-90s Jenny Lind palmette fan.....	157
F206.17.4	Purple ostrich feather shawl.....	158

*Umbrellas*

Um205.17.1	Late 19ths Century black mourning parasol.....	160
Um205.17.2	Black umbrella with ruffles by Schertz.....	161
Um205.17.3	Pink poodle umbrella by Shed Rain.....	162

# Scarves

# Oklahoma Fashion Museum Collection

## Black & White Silk Scarf of Hawaii

Acquisition # SC209.17.1

Dimensions: 31" x 31"

Condition: Excellent

Designer: Unknown

Description: A black and white silk scarf with a map of Hawaii in the center surrounded by circles with sayings.



# Oklahoma Fashion Museum Collection

## 1950s Silk Scarf by G. Prusa

Acquisition # SC207.17.2

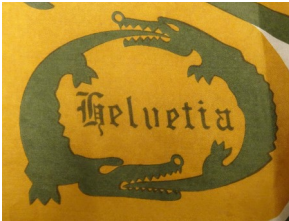
Dimensions: 34" x 35"

Condition: Excellent

Designer: G. Prusa

Description: A 1950s silk scarf with a tan background and green and gold designs. G. Prusa is printed in one corner, and "helvetia" is printed surrounded by 2 crocodiles. One corner has a round brass hang tag that says "seta pura".

**SC207.17.2**  
Silk scarf by G. Prusa  
1950s  
34" x 35"





# Oklahoma Fashion Museum Collection

## Pink Silk Key Scarf by Cero's Ltd.

Acquisition # SC207.17.3

Dimensions: 34" x 35"

Condition: Excellent

Designer: Cero's Ltd.

Description: A square silk scarf with a light pink border and darker pink in the middle with white in-between. The center has key designs with tags, and the print in the white space says "Noubliez pas vos clefs - do not forget your keys". A tag on one corner reads "Cero's Ltd, All Silk, Hand Rolled".



# Oklahoma Fashion Museum Collection

## 1970s Navy, Green & White Scarf by Yves Saint Laurent

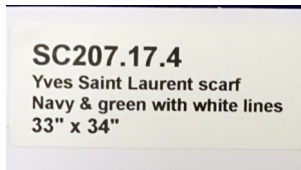
Acquisition # SC207.17.4

Dimensions: 33" x 34"

Condition: Excellent

Designer: Yves Saint Laurent

Description: This scarf has a navy square in the middle surrounded by a 4" wide green border with a 1" wide navy blue border. White square lines are in the center and in the green area.





# Oklahoma Fashion Museum Collection Silk

## Portrait Scarf by M. Campbell

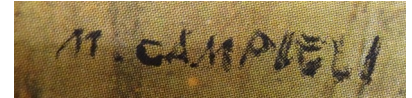
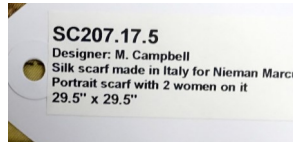
Acquisition # SC207.17.5

Dimensions: 29.5" x 29.5"

Condition: Very Good

Designer: M. Campbell

Description: A silk scarf made in Italy for Nieman Marcus. It has the image of two women printed on the scarf, one holding an umbrella over the other. The border makes it look like a framed picture. There is a small tag on the bottom left hand corner on the reverse side.



# Oklahoma Fashion Museum Collection

## Ocean Scene Scarf by Gucci & V. Accorno

Acquisition #SC207.17.6

Dimensions: 33.5" x 34"

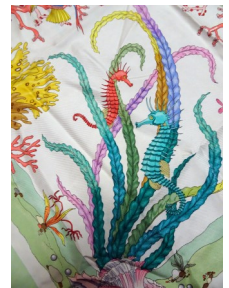
Condition: Very Good

Designer: Gucci & V. Accorno

Description: A light green and white scarf with an ocean scene design including fish, coral, crabs, seahorses, and other things. The names Gucci and V. Accorno are printed on the scarf. A care tag is attached which reads "100% silk, made in Italy, dry clean only, cool iron".



SC207.17.6  
Designer: Gucci & V. Accorno  
Green & white silk scarf made  
in Italy with ocean designs  
33.5" x 34"





# Oklahoma Fashion Museum Collection

## 1970s Black, White & Yellow Scarf by Alfred Angelo

Acquisition # SC207.17.7

Dimensions: 15" x 52"

Condition: Very Good

Designer: Alfred Angelo

Description: A geometric scarf in black, white and yellow with frayed ends. It has large yellow squares in a black background, and black lines on the white background;

SC207.17.7  
Designer: Alfred Angelo  
Navy, white & yellow scarf with  
geometric designs  
15" x 52"



# Oklahoma Fashion Museum Collection

## 1970s Batik Scarf by Patrick Poivre de la Freta

Acquisition # SC207.17.8

Dimensions: 17" x 69"

Condition: Good

Designer: Patrick Poivre de la Freta

Description: A pure silk long, narrow blue scarf with a picture of a woman wearing a brown jacket, a navy blue suit, and brown shoes. An attached tag reads: "Poivre de la Freta, pure soie, piece unique". There is some slight discoloration in spots.





# Oklahoma Fashion Museum Collection

## Black, Tan & Red Long Chiffon Scarf by Echo

Acquisition # SC207.17.9

Dimensions: 16.5" x 63"

Condition: Very Good

Designer: Echo

Description: A long, narrow chiffon scarf with black, tan, and red squares interwoven. The designer's name is on the bottom right hand corner.



# Oklahoma Fashion Museum Collection

## 1970s Navy & White River God Silk Scarf by Sant' Angelo

Acquisition #SC207.17.10

Dimensions: 28" x 29"

Condition: Very Good

Designer: Sant' Angelo

Description: A rare 1970s-80s Sant' Angelo silk scarf with a navy blue and white print of the river god Archelous.

SC207.17.10  
Designer: Sant'Angelo  
Navy blue & white silk with  
abstract face male face design  
28" x 29"





# Oklahoma Fashion Museum Collection

## Orange & Navy Blue Polka Dot Silk Scarf

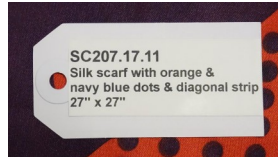
Acquisition # SC207.17.11

Dimensions: 27" x 27"

Condition: Good

Designer: Unknown

Description: A silk scarf with an orange background and navy blue dots, and with a diagonal stripe with a navy blue background and larger orange dots. It has a very minor stain in one spot.



# Oklahoma Fashion Museum Collection

## White Chiffon Scarf with Brown Polka Dots

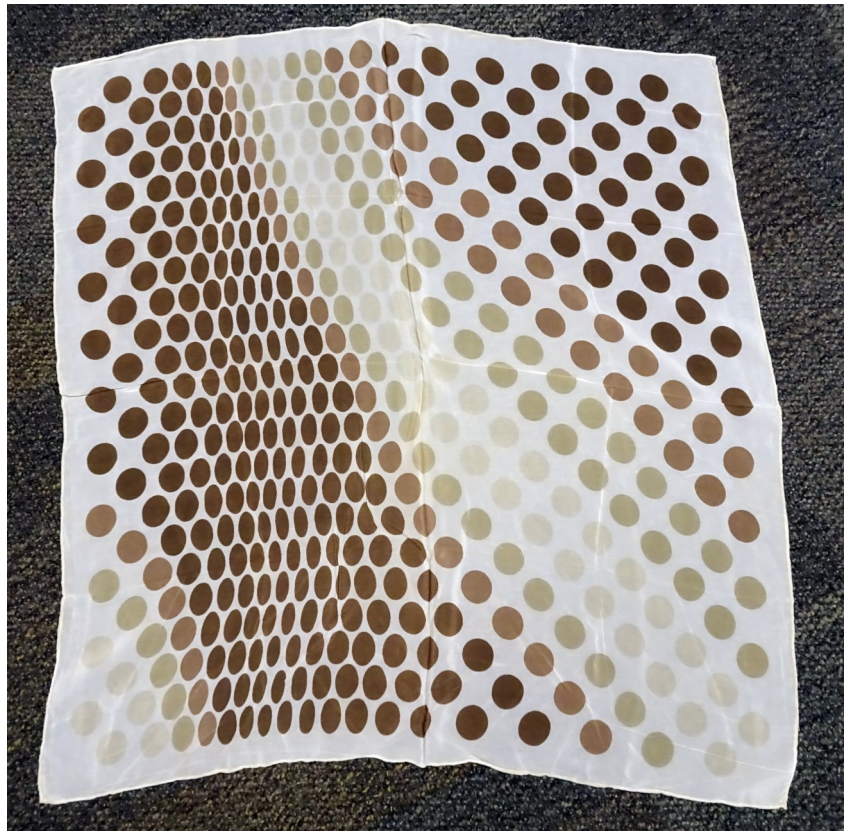
Acquisition # SC207.17.12

Dimensions: 26" x 28"

Condition: Very Good

Designer: Unknown

Description: A sheer chiffon scarf with various shades of brown polka dots on a white background.





# Oklahoma Fashion Museum

## Collection Long Peach Chiffon Scarf

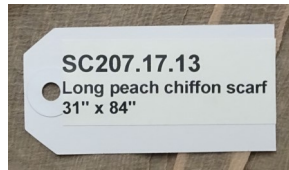
Acquisition # SC207.17.13

Dimensions: 31" x 84"

Condition: Fair

Designer: Unknown

Description: A long peach chiffon scarf. It has a few tiny holes, stains and a snag.



A snag and stain

# Oklahoma Fashion Museum Collection

## Yellow Chiffon Scarf

Acquisition # SC207.17.14

Dimensions: 38" x 38"

Condition: Excellent

Designer: Unknown

Description: A bright yellow chiffon scarf.



# Oklahoma Fashion Museum Collection

## Red Chiffon Scarf

Acquisition # SC207.17.15

Dimensions: 29" x 29"

Condition: Fair, some dark stains

Designer: Unknown

Description: A bright red chiffon scarf.



# Oklahoma Fashion Museum Collection

## Magenta Silk Scarf

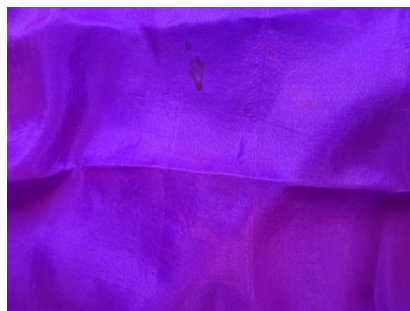
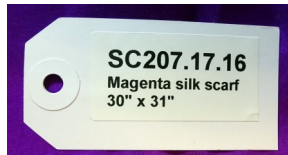
Acquisition # SC207.17.16

Dimensions: 30" x 31"

Condition: Fair

Designer: Unknown

Description: A magenta silk scarf. It has some discoloration where folded, and a slight stain.





# Oklahoma Fashion Museum Collection

## Stained Glass Patterned Scarf

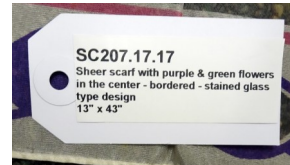
Acquisition # SC207.17.17

Dimensions: 13" x 43"

Condition: Fair, a few damaged spots

Designer: Unknown

Description: A sheer scarf with six purple and green flowers in the center with interwoven pink stems on a beige background, and an interwoven pink, green and purple design in the border. It looks like a stained glass design on a window. An attached tag says it was "made in Japan".



# Oklahoma Fashion Museum Collection

## Brown Chiffon Scarf

Acquisition # SC207.17.18

Dimensions: 18" x 45"

Condition: Good, two small holes

Designer: Unknown

Description: A chiffon scarf with various shades of brown in swirling patterns with some black swirl designs. It has two small holes along one edge.



Swirl pattern



Two small holes



# Oklahoma Fashion Museum Collection

## Ecru Chiffon Scarf with Large Purple Spots

Acquisition # SC207.17.19

Dimensions: 11" x 42"

Condition: Fair

Designer: Unknown

Description: An ecru chiffon scarf with large purple spots. It has some holes and stains.



# Oklahoma Fashion Museum

## Collection Lavender Chiffon Scarf

Acquisition # SC207.17.20

Dimensions: 33" x 35"

Condition: Very Good

Designer: Unknown

Description: A sheer lavender chiffon scarf.



# Oklahoma Fashion Museum Collection

## Sheer Green Scarf with Scalloped Edges

Acquisition # SC207.17.21

Dimensions: 27" x 27"

Condition: Very Good

Designer: Unknown

Description: A sheer green scarf with scalloped edges. It has raised flower and heart design along the edges in a darker green. There are a few comma shaped raised green designs scattered on the scarf.



# Oklahoma Fashion Museum Collection

## Green Chiffon Scarf with Raised Green Circles

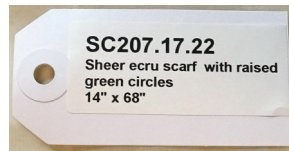
Acquisition # SC207.17.22

Dimensions: 14" x 68"

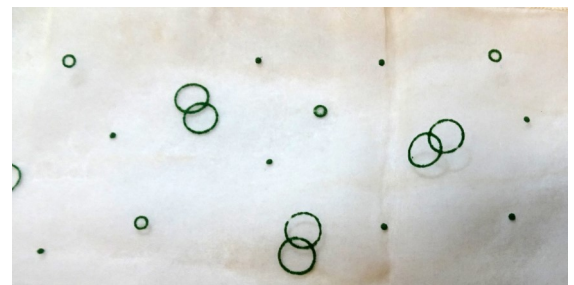
Condition: Fair

Designer: Unknown

Description: A sheer ecru scarf with raised green circles. It has several stains and slight tears.



Raised circle designs





# Oklahoma Fashion Museum Collection

## Long Sheer Black Scarf

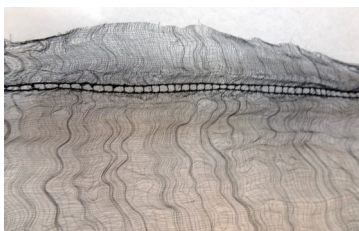
Acquisition # SC207.17.23

Dimensions: 14" x 68"

Condition: Poor, fragile

Designer: Unknown

Description: A sheer black scarf with black fuzzy fringe on the ends.



Fringe detail

# Oklahoma Fashion Museum Collection

## Sheer Chiffon Scarf in Pastel Colors

Acquisition # SC207.17.24

Dimensions: 19" x 37"

Condition: Good

Designer: Unknown

Description: A sheer chiffon scarf with pastel shades of blues, pinks and tans in a watercolor effect. There is slight damage on the edge stitching.





# Oklahoma Fashion Museum Collection

## Long Gold Open Weave Scarf

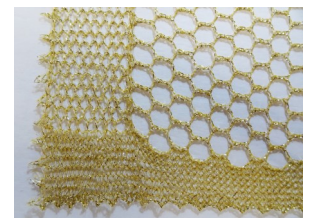
Acquisition # SC207.17.25

Dimensions: 18" x 58"

Condition: Very Good

Designer: Unknown

Description: A gold open weave scarf with finished edges



# Oklahoma Fashion Museum Collection

## Black and Gold Scarf or Shawl

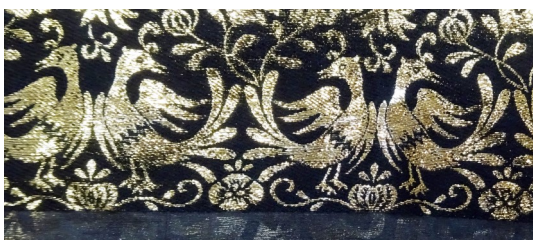
Acquisition # SC20y.17.26

Dimensions: 21" x 64"

Condition: Very Good

Designer: Unknown

Description: A black scarf or shawl with 12 rows of gold brocade designs. The larger row of designs have gold birds and flowers. Black tassels are on each end. An attached tag says: "39% synthetic, 35% nylon, and 15% metallic, with RN#20945, and Made in Japan".





# Oklahoma Fashion Museum Collection

## Long Black Lace Scarf or Shawl

Acquisition # SC207.17.27

Dimensions: 33" x 72"

Condition: Fair

Designer: Unknown

Description: A black lace scarf which could be used as a shawl or veil. It has iridescent sequins attached on all edges, and a triangular iridescent sequin design in the middle of one edge. It's fragile with some lace tears on the edges, and some loose sequin strips.





# Oklahoma Fashion Museum Collection

## Black Triangular Scarf or Shawl

Acquisition # SC207.17.28

Dimensions: 27" x 68"

Condition: Very Good

Designer: Unknown

Description: A stretch black fabric triangular scarf/shawl with black fringe on 2 edges.



# Oklahoma Fashion Museum Collection

## Multicolored Hand Woven Scarf or Shawl

Acquisition # SC207.17.29

Dimensions: 22" x 72"

Condition: Excellent

Designer: Unknown

Description: A multicolored woven scarf or shawl of different colors lengthwise. The ends have 5" long fringe which is hand tied together in macramé style with several attached pom-poms.



# Bracelets



# Oklahoma Fashion Museum Collection

## Jewelry—Bracelet #1

### Bracelet #1

This bracelet has 4 rows of faux pearls and bends around the wrist. It matches Necklace #1



Oklahoma Fashion Museum Collection

Jewelry—Bracelet #2



Oklahoma Fashion Museum Collection

Jewelry—Bracelet #3





# Oklahoma Fashion Museum Collection

## Jewelry—Bracelet #4



# Oklahoma Fashion Museum Collection

## Jewelry—Bracelet #5



Oklahoma Fashion Museum Collection

Jewelry—Bracelet #6



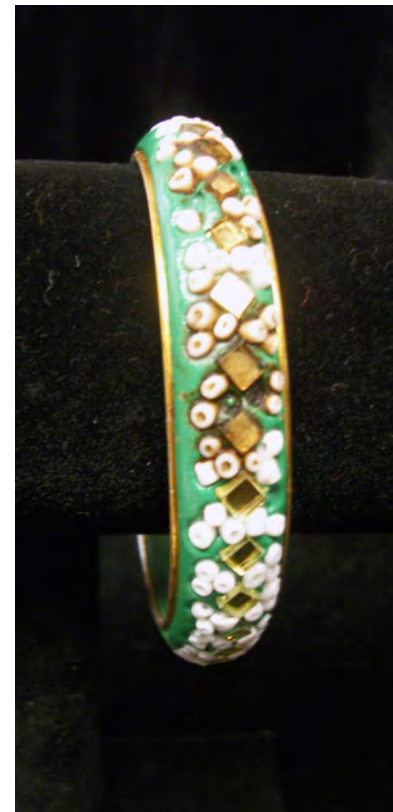


# Oklahoma Fashion Museum Collection

## Jewelry—Bracelet #7



This bracelet is stamped "India" on the inside.



# Oklahoma Fashion Museum Collection

## Jewelry—Bracelet #8



# Earrings



Oklahoma Fashion Museum Collection  
Jewelry—Earrings and Matching Necklace



Earrings #1 with matching Necklace #3

Oklahoma Fashion Museum Collection  
Jewelry—Earrings and Matching Necklace



Earrings and necklace #7

Oklahoma Fashion Museum Collection  
Jewelry—Earrings and Matching Necklace





# Oklahoma Fashion Museum Collection

## Jewelry—Earrings #4



# Oklahoma Fashion Museum Collection

## Jewelry—Earrings #5



Oklahoma Fashion Museum Collection  
Jewelry—Earrings #6 with Necklace #19





OklahomaFashion Museum Collection Jewelry

—Earrings #7 with Necklace #20



Oklahoma Fashion Museum Collection  
Jewelry—Earrings #8 with Necklace #27



Oklahoma Fashion Museum Collection

Jewelry—Earrings #9





Oklahoma Fashion Museum Collection

Jewelry—Earrings #10

Earrings #10  
Weiss clip-on clear  
rhinestones



Oklahoma Fashion Museum Collection

Jewelry—Earrings #11



# Oklahoma Fashion Museum Collection

## Jewelry—Earrings #12





# Oklahoma Fashion Museum Collection

## Jewelry—Earrings #13



Oklahoma Fashion Museum

Collection Jewelry—Earrings #14



# Oklahoma Fashion Museum Collection

## Jewelry—Earrings #15





# Oklahoma Fashion Museum Collection

## Jewelry—Earrings #16



Oklahoma Fashion Museum

Collection Jewelry—Earrings #17



# Oklahoma Fashion Museum Collection

## Jewelry—Earrings #18





Oklahoma Fashion Museum Collection

Jewelry—Earrings #19



# Oklahoma Fashion Museum Collection

## Jewelry—Earrings #20



Oklahoma Fashion Museum Collection

Jewelry—Earrings #21





# Oklahoma Fashion Museum Collection

## Jewelry—Earrings #22



Oklahoma Fashion Museum Collection

Jewelry—Earrings #23



Oklahoma Fashion Museum Collection

Jewelry—Earrings #24





# Oklahoma Fashion Museum Collection

## Jewelry—Earrings and Necklace



# Necklaces

Oklahoma Fashion Museum Collection

Jewelry—Necklace #1



With Matching Bracelet #1



Oklahoma Fashion Museum Collection

Jewelry—Necklace #2



**Single strand of mauve colored beads**

**36" long**

# Oklahoma Fashion Museum Collection

## Jewelry—Necklace #3



**3 strand beaded necklace with gold, black, mauve and burgundy beads shown with matching earrings #1**

**19" long end to end**



Oklahoma Fashion Museum Collection  
Jewelry—Necklace #4 with matching ring



13" silver necklace with brown stones and a matching ring

Made in Italy





# Oklahoma Fashion Museum Collection

## Jewelry—Necklace #5



**A double strand of white summer beads**

**17" long**



Oklahoma Fashion Museum Collection

Jewelry—Necklace #6



**A 24" long single strand of white beads**



# Oklahoma Fashion Museum Collection

## Jewelry—Necklace #7



**A 24" double strand of faux pearls with small silver beads—has matching earrings (#2)**





# Oklahoma Fashion Museum Collection

## Jewelry—Necklace #8



**An 18" long 3 strand white faux pearl choker with a silver bar in the middle.**



Oklahoma Fashion Museum Collection

Jewelry—Necklace #9



**An 18.5" long single strand necklace with white coral beads.  
Earrings #3 match this necklace.**



# Oklahoma Fashion Museum Collection

## Jewelry—Necklace #10



**A 31" long single strand of light brown faux pearls.  
This can be worn as a single, double, or even triple  
strand necklace.**





# Oklahoma Fashion Museum Collection

## Jewelry—Necklace #11

**A 16" 3 strand necklace with white, coral, and small turquoise spacer beads. Designer: Nettie Rosenstein**



Oklahoma Fashion Museum Collection

Jewelry—Necklace #12 with matching Earrings #4

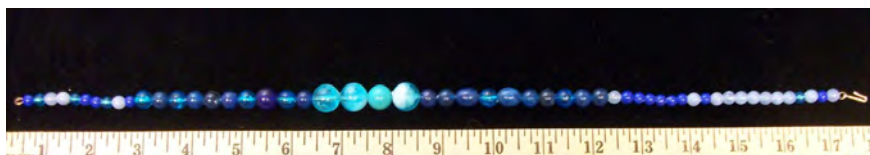
**A 14" light green pearl necklace with a silver clasp.  
Matching single pearl earrings #4.**



Oklahoma Fashion Museum Collection

Jewelry—Necklace #13

**An 18" long single strand necklace with blue plastic round beads in different shades.**





# Oklahoma Fashion Museum Collection

## Jewelry—Necklace #14

An 18" long single strand necklace of various shaped blue plastic beads in varying shades of blue.



# Oklahoma Fashion Museum Collection

## Jewelry—Necklace #15

A 29" long single strand of toffee colored beads with knots in-between.



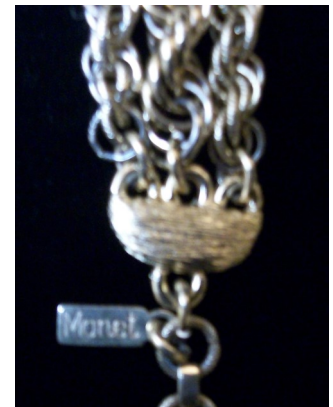


# Oklahoma Fashion Museum Collection

## Jewelry—Necklace #16

A 17” long necklace with 3 strands of gold chains and a bangle in the middle.

**Designer: Monet.**



Designer Tag





# Oklahoma Fashion Museum Collection

## Jewelry—Necklace #17

A 15" long rhinestone choker with 2 rows of square rhinestones.



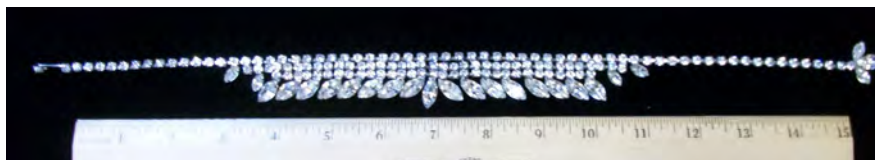
# Oklahoma Fashion Museum Collection

## Jewelry—Necklace #18

**A 17" long rhinestone necklace designed by Weiss. It is dated between 1942 and 1971.**



**Clasp**





# Oklahoma Fashion Museum Collection

## Jewelry—Necklace #19

**A 15" long necklace with blue rhinestones. Earrings #6 go with this necklace.**





# Oklahoma Fashion Museum Collection

## Jewelry—Necklace #20

**A 16" long silver drop necklace with clear rhinestones and a small bow clasp. It has matching earrings (#7).**



# Oklahoma Fashion Museum Collection

## Jewelry—Necklace #21

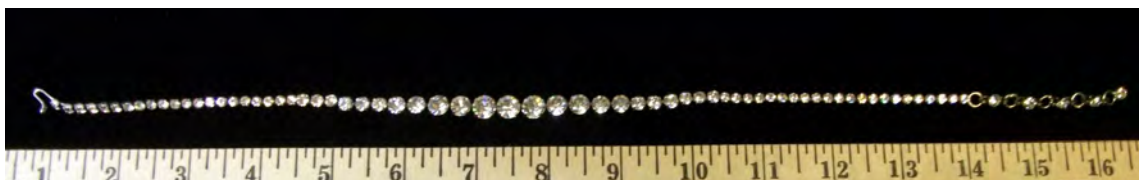
**A 16" long green rhinestone necklace.**



# Oklahoma Fashion Museum Collection

## Jewelry—Necklace #22

**A 16" single strand necklace with clear rhinestones of graduated sizes and a silver backing.**





Oklahoma Fashion Museum Collection

Jewelry—Necklace #23

**A 15" clear rhinestone necklace.**



# Oklahoma Fashion Museum Collection

## Jewelry—Necklace #24

**A 14" necklace designed by Coro with 5 gold chains and 18 gathered strands of bronze beads.**



# Oklahoma Fashion Museum Collection

## Jewelry—Necklace #25

**A 54" long single strand necklace of multi-colored oval beads with gold**





# Oklahoma Fashion Museum Collection

## Jewelry—Necklace #26

**A 17" long topaz rhinestone necklace with gold tone backing.**



# Oklahoma Fashion Museum Collection

## Jewelry—Necklace #27

**A 16.5" necklace with two strands of yellow, green, and amber colored stones. Has matching green earrings (#8).**



# Oklahoma Fashion Museum Collection

## Jewelry - Necklace #28

**A 25" long beaded necklace with alternating taupe and amber colored beads.**





# Oklahoma Fashion Museum Collection

## Jewelry—Necklace #29

**A 19" long necklace with large brown, dark brown, and gold beads.**



# Oklahoma Fashion Museum Collection

## Jewelry—Necklace #30

**A 23" double strand necklace with large green and gold beads.**

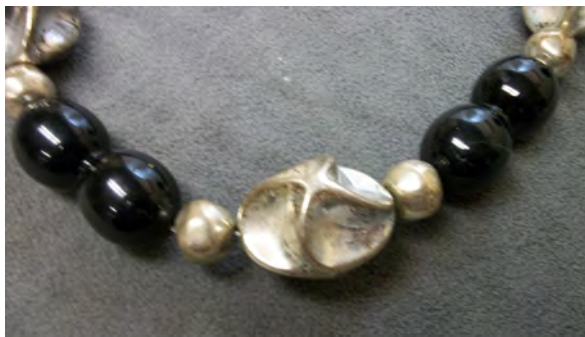




Oklahoma Fashion Museum Collection

Jewelry—Necklace #31

**A 16" long black and silver necklace with large beads.**

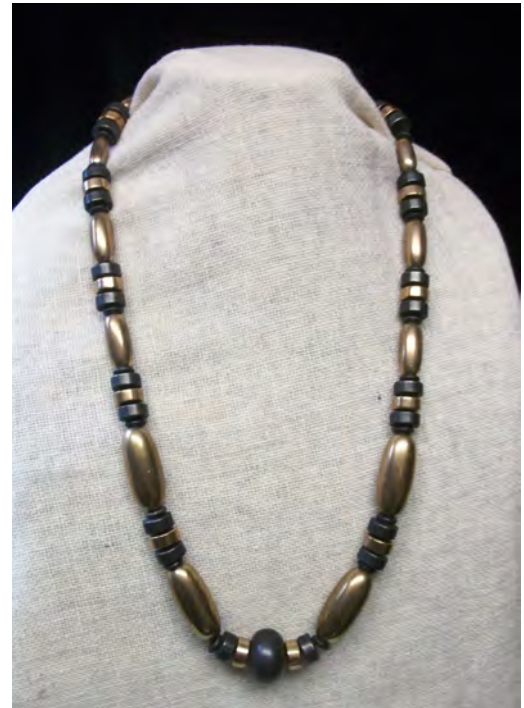




# Oklahoma Fashion Museum Collection

## Jewelry—Necklace #32

**A 31" long Dauplaise signed bronze and black colored necklace with large beads.**



# Oklahoma Fashion Museum Collection

## Jewelry—Necklace #33

### Necklace #33

Rhinestone necklace with 13 large pearls – has matching earrings #26

### Earrings #26

Rhinestone earrings with 1 large pearl – matching necklace #33



# Pins

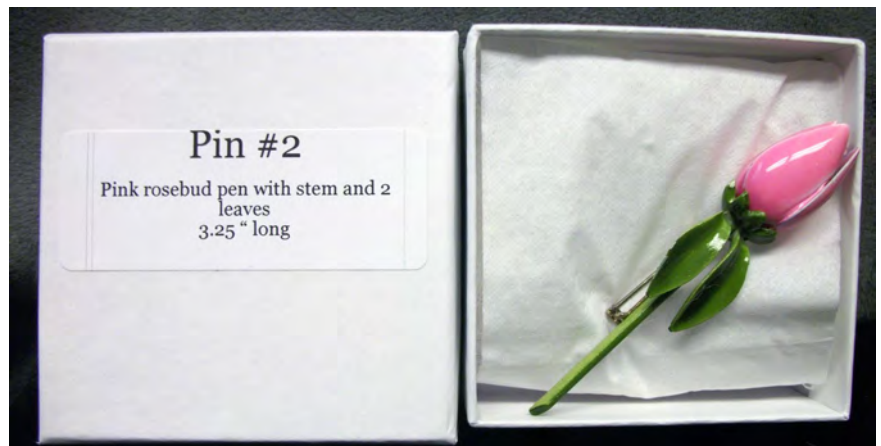
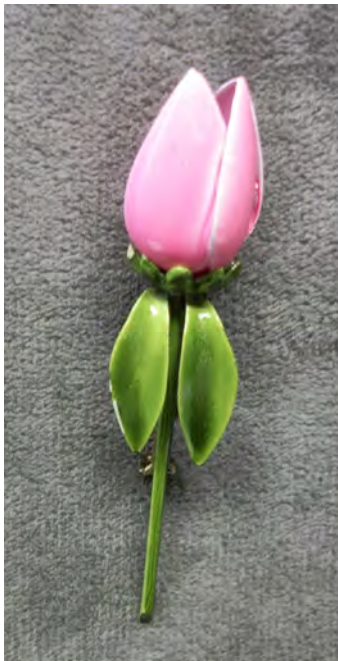
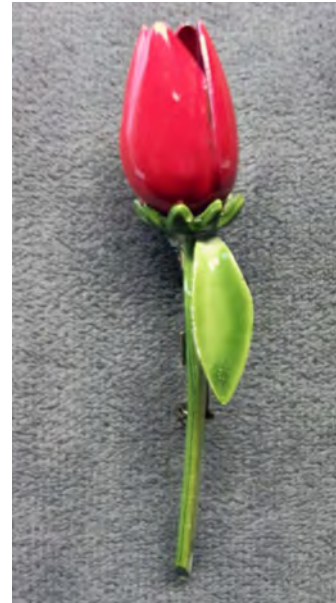


# Oklahoma Fashion Museum Collection

## Jewelry—Pins #1 and #2—Rosebuds



**Pin #1**  
Red rose enamel pin with  
stem and 2 leaves  
3.25" long



**Pin #2**  
Pink rosebud pen with stem and 2  
leaves  
3.25" long

# Oklahoma Fashion Museum Collection

## Jewelry—Pin #3—Trifari Red Rose



# Oklahoma Fashion Museum Collection

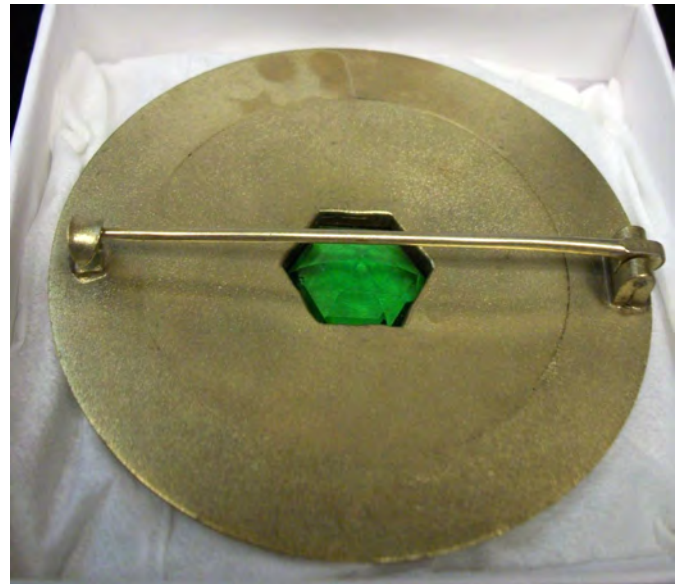
## Jewelry—Pin #4—Florenza Maltese Cross





# Oklahoma Fashion Museum Collection

## Jewelry—Pin #5



# Oklahoma Fashion Museum Collection

## Jewelry—Pin #6



Front View



Back View



Side View

# Oklahoma Fashion Museum Collection

## Jewelry—Pin #7





# Oklahoma Fashion Museum Collection

## Jewelry—Pin #8—Blue Butterfly



# Oklahoma Fashion Museum Collection

## Jewelry—Pin #9



# Oklahoma Fashion Museum Collection

## Jewelry—Pin #10





# Oklahoma Fashion Museum Collection

## Jewelry—Pin #11



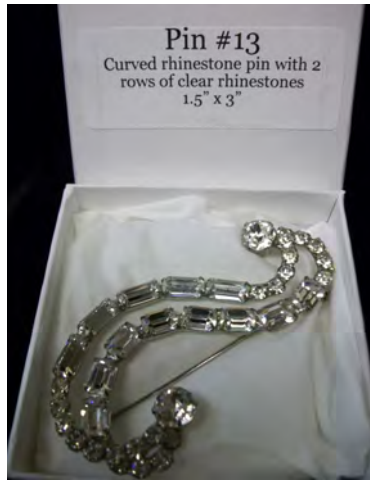
# Oklahoma Fashion Museum Collection

## Jewelry—Pin #12



# Oklahoma Fashion Museum Collection

## Jewelry—Pin #13





# Oklahoma Fashion Museum Collection

## Jewelry—Pin #14



# Oklahoma Fashion Museum Collection

## Jewelry—Pin #15



# Oklahoma Fashion Museum Collection

## Jewelry—Pin #16





# Shoe Buckles

# Oklahoma Fashion Museum Collection

## Jewelry—Shoe Buckles #1



# Oklahoma Fashion Museum Collection

## Jewelry—Shoe Buckles #2





Oklahoma Fashion Museum Collection

Jewelry—Shoe Buckle #3



# Dress Clips

Oklahoma Fashion Museum Collection

Jewelry—Dress clips #1





# Oklahoma Fashion Museum Collection

## Jewelry—Dress clip #2



# Belts

# Oklahoma Fashion Museum Collection

## White Patent Leather Belt

Acquisition # B210.17.01

Dimensions: 35 1/4" long x 1 13/16" wide

Underside material: White Leather

Underside markings: 12 & something unreadable

Condition: Good

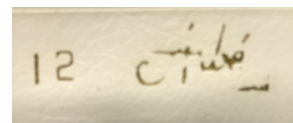
Description: A white patent leather belt with a rectangular brass buckle and 2 patent leather loops with brass accents on each side of the loops. The loops are stapled in the back, and the strap is attached to the buckle with 2 pressed studs. There is some discoloration and staining on the belt front and some creasing in spots.



Top & underside view of belt



Buckle and loop



Markings on inside of belt strap



# Oklahoma Fashion Museum Collection

## Western Style Thin Brown Faux Leather Belt

Acquisition # B210.17.02

Dimensions: 38 7/8" long x 3/4" wide

Underside material:

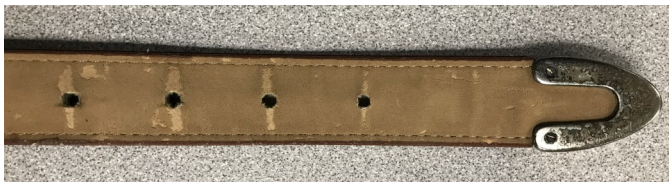
Underside markings: Milor 11931, Made in China, ML

Condition: Good

Description: A medium brown faux leather belt. The front panel has a nickel buckle, belt loop and end tip. There are 5 holes punched for the prong. The belt strap is stitched to the buckle and is stitched on the edges. The end tip is screwed on with 2 small screws. The underside is a lighter brown color. There are some scratches and tears on the back panel and some discoloration of the metal pieces.



Markings on underside



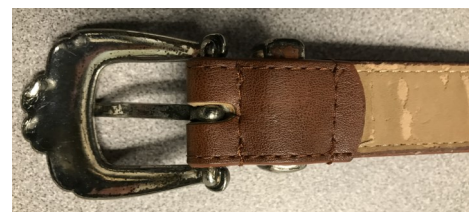
Belt strap end views



Detailed view of the metal on the strap end



Top view of buckle



Underneath view of buckle

# Oklahoma Fashion Museum Collection

## Christian Dior Off-White Wide Patent Leather Belt

Acquisition # B210.17.03

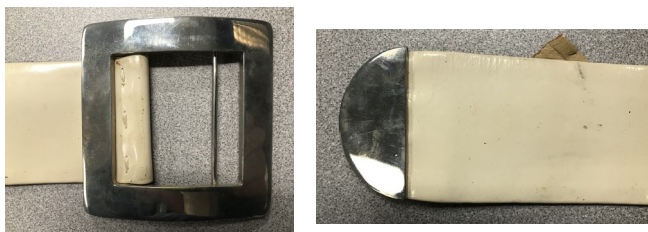
Dimensions: 37" long x 2 3/16" wide

Underside material: Tan leather

Underside markings: Christian Dior, 2567

Condition: Fair

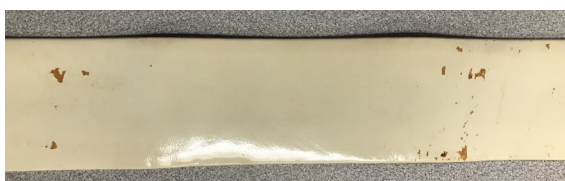
Description: A wide, off-white patent leather belt with a large square nickel buckle which has a bar instead of a prong. The belt strap is stitched to the buckle, and the end of the strap is rounded and has a nickel metal tip that shows on the top only. The back panel is torn near the strap end, and there are several stain, or wear spots on the front.



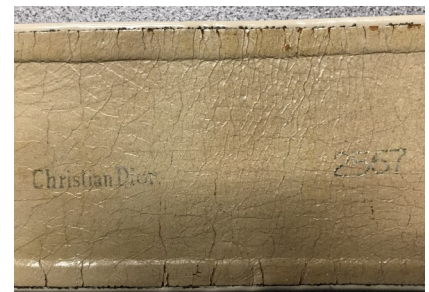
Buckle and strap end details



Damage on end of strap back panel



Stains and wears on the front strap panel



Back panel with designer name



# Oklahoma Fashion Museum Collection

## Thin Black Faux Snakeskin Belt

Acquisition # B210.17.04

Dimensions: 34" long x 3/8" wide

Size: 14

Underside material: Folded over

Underside markings: 14 Centre 767 in yellow lettering

Condition: Poor

Description: This black faux snakeskin belt has an unusual shaped metal buckle which is covered in the same material as the strap. The buckle has 2 holes in it, one for the prong, and the other serves as a belt loop. The material was simply folded over to the underside which met in the middle. It has 3 belt holes toward the end. Some of the material is separating on the end and there are worn spots on the underside of



Outside view of the buckle



Underneath view of the buckle



Underside and damage





# Oklahoma Fashion Museum Collection

## Orange Faux Leather Belt with Gold Designs with Bead Accents

Acquisition # B210.17.05

Dimensions: 33" long x 2" wide

Underside material: Brown leather

Underside markings: Artemise, 1202, 28

Condition: Fair—some stones are missing

Description: A faux leather orange tone belt with painted gold designs and attached bead accents. It has one hole on both ends for a strap to attach with 2 snaps on each side. A few small beads are missing, and the front & back materials are separating in one spot.



Front Strap Views



Designer marking



Underside views

# Oklahoma Fashion Museum Collection

## Purple, Orange & Gold Fabric Belt

Acquisition # B210.17.06

Dimensions: 27.6" long x 3.5" wide

Underside material: Black fabric

Underside markings: None

Condition: Good

Description: This wide fabric belt has geometric designs on the outside in gold, orange and purple with a purple strip at the top and bottom. The underside is black fabric. It fastens with metal hooks on the under side, and 2 rows of sewn loops on the outside. Some of the threads are loose on the fabric.



Front view



Back view



Loops for the hooks



Metal hooks



# Oklahoma Fashion Museum Collection

## Turquoise & Silver Fish Scale Stretch Belt

Acquisition # B210.17.07

Dimensions: 21 3/4" long x 1 5/8" wide

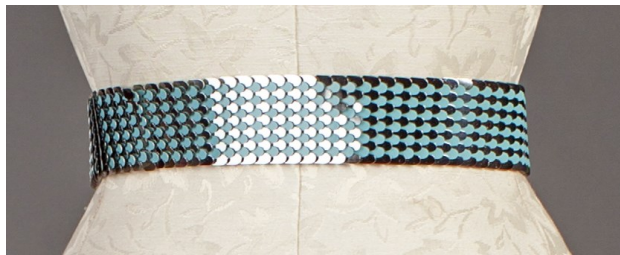
Underside markings: None

Condition: Good

Description: A turquoise and silver vintage fish scale stretch belt with a square silver buckle. The buckle has a raised circular design in the middle, and a hook underneath which slides into a metal slot on the opposite end.



Front view



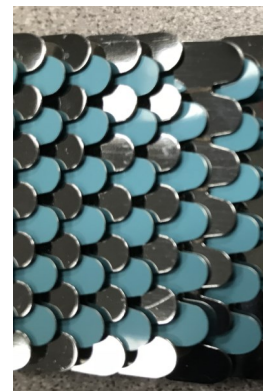
Back view



Belt buckle



Underneath side of belt



Scales closeup



# Oklahoma Fashion Museum Collection

## White Fish Scale Stretch Belt

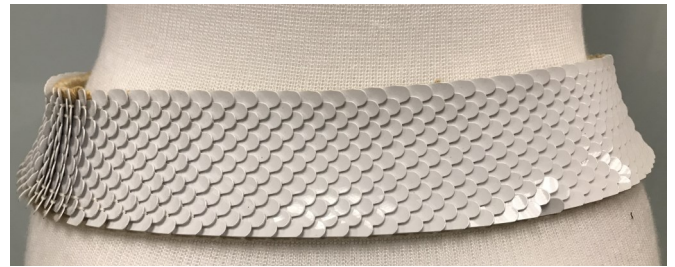
Acquisition # B210.17.08

Dimensions: 26.5" long x 1.5" wide

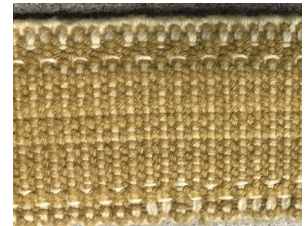
Underside markings: None

Condition: Good

Description: A white fish scale stretch belt with a rectangular gold tone buckle in front. The buckle has a 5 petal raised flower design on the front, with a hook on the back which fits into a slot on the opposite end. The sides of the buckle are slightly curved in. The stretchy underside is a light tan color.



Scales close-up



Underneath side of belt

# Oklahoma Fashion Museum Collection

## Silver & White Fish Scale Stretch Belt

Acquisition # B210.17.09

Dimensions: 26 " long x 1.5" wide    Size: Small

Underside color: Beige or off-white

Underside markings: "Small" tag under buckle

Condition: Good, some discoloration on the underneath side

Description: A silver and white fish scale stretch belt with a square silvertone buckle. The buckle has a raised circular design in the middle with 2 circles and a center. The underneath side of the buck has a clasp which clips onto a metal bar on the opposite end.



Top of buckle



Underneath side



Scale detail





# Oklahoma Fashion Museum Collection

## Light Blue Fabric Belt with Rhinestone Buckle

Acquisition # B210.17.10

Dimensions: 35.75" long x 1.5" wide

Underside material: Tan faux leather

Underside markings: 14 and 409

Condition: Poor

Description: A light blue fabric belt with a large, oval rhinestone buckle. The belt strap is pointed on one end with 2 snaps for closure. The other end has 4 discs the snaps can fit into so the belt is somewhat adjustable. The underside is tan faux leather which has a broken spot in the middle, a piece missing on one end, and some stains.





# Oklahoma Fashion Museum Collection

## Tan Faux Leather Belt with 4 Coins & Rhinestones

Acquisition # B210.17.11

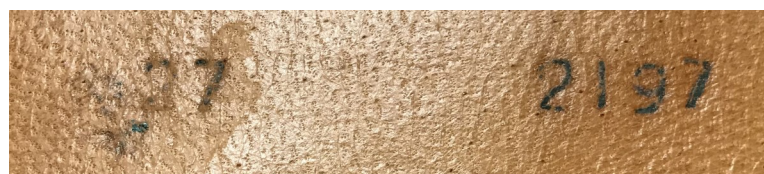
Dimensions: 30 1/8" long x 2" wide

Underside material: Tan Leather

Underside markings: 37, and 2197

Condition: Very good, some scuffs and staining

Description: This tan, faux leather belt has 2 covered belt buckles with gold tone prongs, and one belt loop on each side. The center strap that fits into the buckles has 4 gold tone coins (2 half pennies and 2 cinco centavos) attached to the front with a large rhinestone on top of each coin. The edges of the center strap are stitched, and there are 3 punched holes on each end. The buckles and belt loops are attached with stitching.



# Oklahoma Fashion Museum Collection

## Gold Faux Leather Belt

Acquisition # B210.17.12

Dimensions: 32" long x 2" wide

Underside material: Gold mesh

Underside markings: None

Condition: Very Good

Description: A gold faux leather belt with a tan fabric back. The gold material on the outside folds over the edges to the underside. The belt has no buckles, but has 2 hooks that fit into 1 of the 3 rows of metal grommets.





# Oklahoma Fashion Museum Collection

## White Leather Belt with Gold, Black & Red Designs

Acquisition # B210.17.13

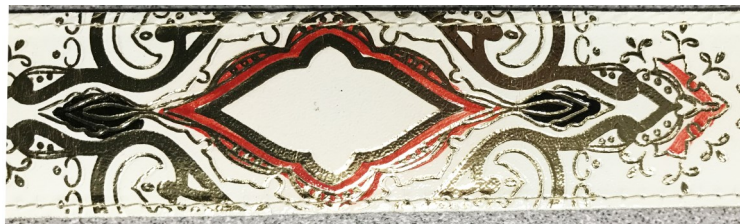
Dimensions: 37" long x 1 3/16" wide

Underside material: Tanned leather

Underside markings: None

Condition: Very Good

Description: A white leather belt with gold, black & red designs on top. The underneath side is tanned leather. The belt strap is stitched along the edges and has a pointed end which has 4 punched holes. The buckle on the other end is stitched onto the strap, has a gold tone prong, and is covered with the patterned leather which is stitched onto the buckle. The belt has an adjustable belt loop with is stapled together.





# Oklahoma Fashion Museum Collection

## Blue Green Fabric Belt

Acquisition # B210.17.14

Dimensions: 34 1/4" long x 2" wide

Underside material: Fabric

Underside markings: None

Condition: Very Good

Description: This looks like a home made belt in blue green fabric. It has a wide slip through metal buckle which is covered on the outside. The fabric is folded over the strap and stitched together inside. The end of the strap is stitched onto the buckle, and the other end is pointed.



Buckle views



# Oklahoma Fashion Museum Collection

## Green Leather Belt with Coats of Arms

Acquisition # B210.17.15

Dimensions: 35 1/8" long x 2" wide

Underside material: Tan Leather

Underside markings: None

Condition: Very Good

Description: A green leather belt with gold trim designs inset with coats of arms from different Italian cities (Rome, Firenze & Napoli). The brass buckle is covered with the same leather and the strap has 2 adjustable belt loops. The strap end has 4 punched holes and is straight. There is a small tear on the underside near one of the punched holes.



# Oklahoma Fashion Museum Collection

## Brown, Orange and Tan Fabric Belt

Acquisition # B210.17.16

Dimensions: 27.5" long x 2.5" wide

Underside material: Brown Fabric

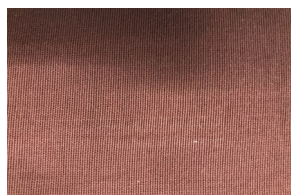
Designer Tag: Yves Saint Laurent, Paris-New York

Condition: Fair

Description: A brown, orange and tan fabric belt with an orange stripe in the middle surrounded by brown and tan stripes. It has a rhinestone covered buckle but no prong. The buckle is missing 6 rhinestones and the end is fraying.



Fabric detail



Underside material



# Oklahoma Fashion Museum Collection

## Copper Tone Conch Belt

Acquisition # B210.17.17

Dimensions: 31.5" long x 3/4" wide

Underside material: Copper

Underside markings: None

Condition: Very Good

Description: A copper tone metal belt with 16 metal southwest design oval pieces linked together with metal circles. The belt attaches with a rectangular metal piece with a hook over a loop on the opposite end. The pieces have some slight discoloration and oxidation.



# Oklahoma Fashion Museum Collection

## Black & White Belt with Gold Designs

Acquisition # B210.17.19

Dimensions: 34.5" x 1"

Underside material: Tan leather

Underside markings: None

Condition: Very Good

Description: A faux leather belt with bands of black & white with gold designs and borders. It has a buckle with a prong and 4 punched holes. The buckle has the same design as the belt. The end of the belt strap is pointed. There is some wrinkling toward the end and some gold chipped away in one spot.



Front and back of buckle



Belt designs



Punched holes



# Oklahoma Fashion Museum Collection

## Black Patent Leather Belt

Acquisition # B210.17.20

Dimensions: 42.5" long x 13/16" high

Underside material: Tan leather

Underside markings: [size] 14

Condition: Very Good

Description: A thin, black patent leather belt with a rectangular covered belt loop without a prong. The strap has an adjustable loop for the end. The underside is tan colored faux leather. There are some stains and scuffs on the front and some cracking on the underside.





# Oklahoma Fashion Museum Collection

## White Leather Belt with Brass Buckle

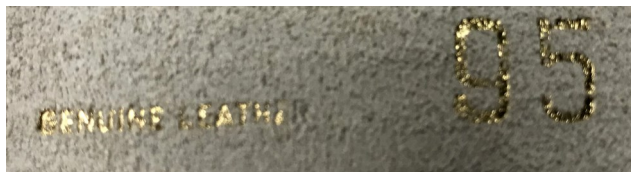
Acquisition # B210.17.21

Dimensions: 38.5" long x 1.5" wide

Underside markings: Genuine leather, hand made in Italy, The Leather Shop of St. Thomas, 95

Condition: Good

Description: A white leather belt with a rectangular brass buckle with 2 semicircular designs in the middle and a hook closure. It has one adjustable belt loop which is attached to the belt by a snap. There are several small stains on the back and scuffs on the buckle.



# Oklahoma Fashion Museum Collection

## Burgundy Leather Belt by Ben Reig

Acquisition # B210.17.22

Dimensions: 33" long x 2.25" wide Size: 12

Underside material: Same as top

Underside markings: 158 Ben Reig 12

Condition: Good

Description: A burgundy leather belt by Ben Reig with 2 rectangular silver tone buckles with a center piece in-between. Each end of the strap has 4 snaps to attach the belt to the buckle. There are a few scratches & scuffs on the outside.





# Oklahoma Fashion Museum Collection

## Thin Green Fabric Belt

Acquisition # B210.17.23

Dimensions: 31" long x 1/2" wide

Underside material: Dark green leather

Underside markings: 10

Condition: Fair

Description: A thin green fabric belt with a covered rectangular bucklet with a prong. The end is pointed and it has 4 punched holes. The edges are stitched and the strap is stitched onto the buckle. Some of the leather is cracking in several places and the fabric on the buckle is worn.





# Oklahoma Fashion Museum Collection

## White Belt with Rhinestone Buckle

Acquisition # B210.17.24

Dimensions: 32.5" long x 1.5" wide

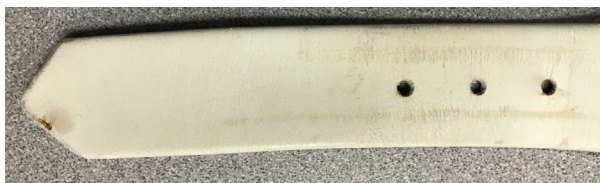
Size: 28

Underside material: Tan faux leather

Underside markings: 28 Belasco of California 1956

Condition: Fair

Description: A faux leather white belt with a rectangular belt buckle with a prong. The buckle has 16 big rhinestones around it. The end of the belt is pointed, and it has 3 punched holes for the prong. There are some stains & scratches on the outside and the back is beginning to separate at the end.



Outside stains

# Oklahoma Fashion Museum Collection

## Black Patent Leather Belt by Norman Norell

Acquisition # B210.17.25

Dimensions: 34.5" long x 1 1/2" wide

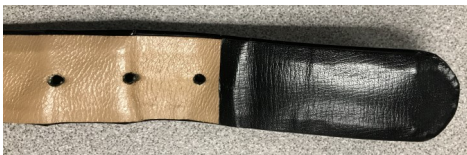
Size: 12

Underside material: Tan leather

Underside markings: 12 Norman Norell

Condition: Fair/Good

Description: A black patent leather belt with a tan leather underside. It has a rectangular buckle which is covered, has a prong, and the strap is stitched on. The end of the strap is rounded and it has 3 punched holes. The underside of the strap has 2 loops attached. The belt is twisted out of shape and the front and back are separating in places.



Attached loop underneath

# Oklahoma Fashion Museum Collection

## Maroon Leather Belt

Acquisition # B210.17.26

Dimensions: 36.5" long x 1.25" wide

Underside material: Tan leather

Underside markings: 10 Kimberly 7331

Condition: Good

Description: A maroon leather belt with a covered D shaped buckle with a brass tone prong. It has a belt loop and 5 punched holes. The edges are stitched on the buckle, strap edges and loop. The underside is tan and has "10 Kimberly 7331" stamped on it.





# Oklahoma Fashion Museum Collection

## White Faux Leather Belt

Acquisition # B210.17.27

Dimensions: 34.5" long x 2.5" wide

Size:

Underside material: Tan faux leather

Underside markings: 28....3909

Condition: Very Good

Description: Q wide white faux leather belt with a large D shaped brass buckle with a brass prong. The strap has 4 riveted holes for the buckle, an attached belt loop, and a squared off end. The underside is tan. The belt has some scuff marks on the underside and some small stains on the front.



# Oklahoma Fashion Museum Collection

## Cream Beaded Belt made in Hong Kong

Acquisition # B210.17.28

Dimensions: 31.5" long x 1.5" wide

Underside material: Cream fabric

Underside tag: Bonnie's Made in Hong Kong

Condition: Very Good

Description: A cream colored fabric belt with iridescent sequins, rhinestones and beads attached in floral patterns. It has a clear plastic D shaped buckle with a silver tone prong, a sequined belt loop, and a tapered end. It's wider in the back than in the front, and has 5 holes with rivets for the buckle.





# Oklahoma Fashion Museum Collection

## Gold Faux Snakeskin Belt by Geoffrey Beene

Acquisition # B210.17.29

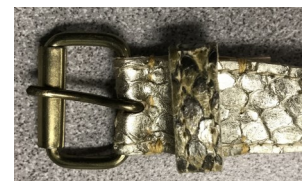
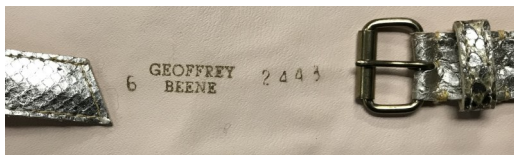
Dimensions: 58" long x 3" wide@ widest part

Underside material: Tan faux leather

Underside markings: 6 Geoffrey Beene 2443

Condition: Very Good

Description: This gold faux snakeskin belt is wider in the back and tapers to thinner strap ends. It's designed to be wrapped around the waist. It has a small brass tone buckle with a prong and an attached belt loop. The end has 6 punched holes.





# Oklahoma Fashion Museum Collection

## Pink Ultrasuede Belt

Acquisition # B210.17.30

Dimensions: 32.75" long x 1" wide

Underside material: Pink leather

Underside markings: 8

Condition: Very Good

Description: A pink Ultrasuede belt with a covered buckle with prong and 2 belt loops. The end of the strap is pointed and it has 5 punched holes. Stitching is along all the edges.



# Oklahoma Fashion Museum Collection

## Cobra Snake Skin Belt

Acquisition # B210.17.31

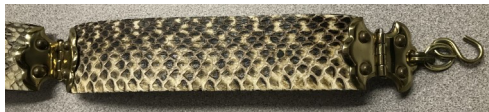
Dimensions: 37" long x 1.25" wide

Underside material: Tan leather

Underside markings: Genuine cobra 8454

Condition: Good

Description: This belt has cobra snake skin on the outside and tan leather on the underside. It has four individual sections which are attached with hinges. The front hinges has a chain and hook for fastening. Some of the cobra skin is separating from the back panel.



# Fans & Feathers



# Oklahoma Fashion Museum Collection

## 1920s Orange Ostrich Feather Fan

Category: Fan

Acquisition #F.206.17.1

Condition: Fair

Description:

An orange ostrich feather fan with five feathers attached to black plastic holders. It has a tortoise shell U at the bottom holding it together. The fan folds up, and is losing some feathers.



# Oklahoma Fashion Museum Collection

## 1920s Blue Ostrich Feather Fan

Category: Ostrich feather fan

Acquisition #F.206.17.2

Condition: Fragile

Donor: Unknown, found in the collection

Description: A light blue ostrich feather fan. It has 9 light blue feathers attached to yellowish gold plastic holders. It has some loose feathers.





# Oklahoma Fashion Museum Collection

## 1860s-90s Jenny Lind Palmette Fan

Category: Fan

Acquisition #F.206.17.3

Condition: Fragile

Donated by: William S. Miller (Norman, Okla.), August 6, 2016

Description: A Victorian Jenny Lind palmette fan with bone/ivory spokes and shield. Ivory fabric leaves are embroidered and were trimmed with feathers. It has 11 spokes with starched fabric attached on each spoke, and a tassel on the end. The fabric has embroidery on the edges. Opened, the fan is 12" wide and 7" long. This fan was probably used during a wedding, and was received with one pair of small white silk gloves, a white silk veil, and a handkerchief.





# Oklahoma Fashion Museum Collection

## Purple Ostrich Feather Shawl

Category: Shawl

Acquisition #F.206.17.4

Condition: Good

Estimate date: 1930s?

Donated by: Unknown, found in the collection

Description: A purple ostrich feather shawl. The feathers are attached to a light blue fabric lining and it has snaps at the ends in front.



Lining

# Umbrellas

# Oklahoma Fashion Museum Collection

## Late 19th Century Mourning Parasol

Category: Mourning parasol

Acquisition #Um.205.17.1

Condition: Good

Donated by: Unknown, found in the collection

Description: A black mourning parasol that folds in half and fits inside a black drawstring case. The parasol has a wood shaft, 8 spokes are covered with fabric, and there are 3 rows of pleated ruffles on the top. The parasol, opened, is 18" wide and 29" high; when folded, it's 16" long. The case is 16" long, 5" wide, and has drawstrings on both ends.





# Oklahoma Fashion Museum Collection

## 1950s Black Umbrella with Ruffles by Schertz

Category: Umbrella

Acquisition #Um.205.17.2

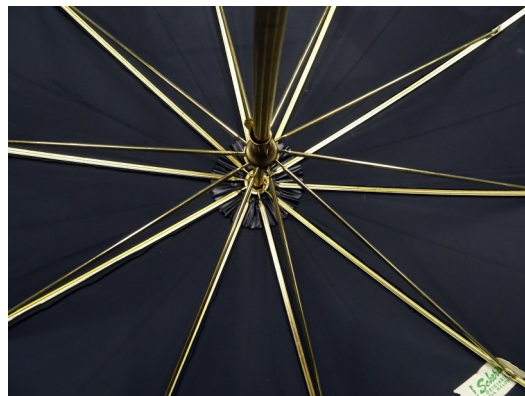
Condition: Excellent

Length: 30.5" long

Designer: Schertz Original

Donated by: Nettie Griffin, November 30, 1988

Description: A black nylon umbrella with ruffles on the edges. It has 10 brass spokes, a black plastic hook handle, and a snap closure that wraps around when closed..



# Oklahoma Fashion Museum Collection

## 1950s Pink Poodle Umbrella

Category: Umbrella

Acquisition #Um.205.17.3

Designer: Unknown

Inside Tag: Shed Rain, Portland, Oregon

Donated by: Unknown, found in the collection

Length: 34" long

Description: A pink umbrella with a matching case. The umbrella has a brass shaft with a wooden pink poodle head handle. The handle has a pink cord with balls on the end attached to put your hand through. The umbrella has 10 black spokes and a snap wrap closure. The storage case has ruffles on both ends, with the top of the brass shaft coming out one end.

