

WHAT'S INSIDE

Day Retreat 2

What's Happening 3

Pride Picnic 3

SISU Update 4

Herland History 4

Ways to Help 5

The Big Event 5



herland VOICE

VOLUME 34 No 2 APRIL 2016

Herland Day Retreat—Saturday, May 14th, Lake El Reno

We are switching things up on you this year! Instead of two weekend retreats—one Spring, one Fall—we decided to make the Spring Retreat a one-day event at a much closer location—Lake El Reno! Just a 30 minute drive from downtown OKC.

We've rented the 40 ft by 80 ft pavilion for the day, complete with restrooms, electricity, a BBQ grill, and 10 picnic tables. And we'll be right by the volleyball court, boat dock, newly constructed beach area for swimming, and kid's playground area.

What is there to do at this one-day retreat? Lots! Food, live entertainment, boating, fishing, swimming, bicycling and walking trails, volleyball, croquet, board games, and a chance to relax and catch up with friends.

What are the hours of the event? We'll be there from 11 am to 7 pm. Lunch will be at noon and supper at 5:30 pm. Live entertainment by the Jennifer Long Band is from 3—5 pm.

What should I bring? We're providing hamburgers, veggie burgers, hotdogs, water, lemonade, and tea. Bring a side or dessert and your own beer (in cans only) if you like. Dogs are okay on a leash and bring a lawn chair, your kids (all

ages, boys and girls), and friends. Everyone is welcome!

How much does it cost? Only \$10 for adults and \$5 for kids over the age of 6. Under 6 and they are free!

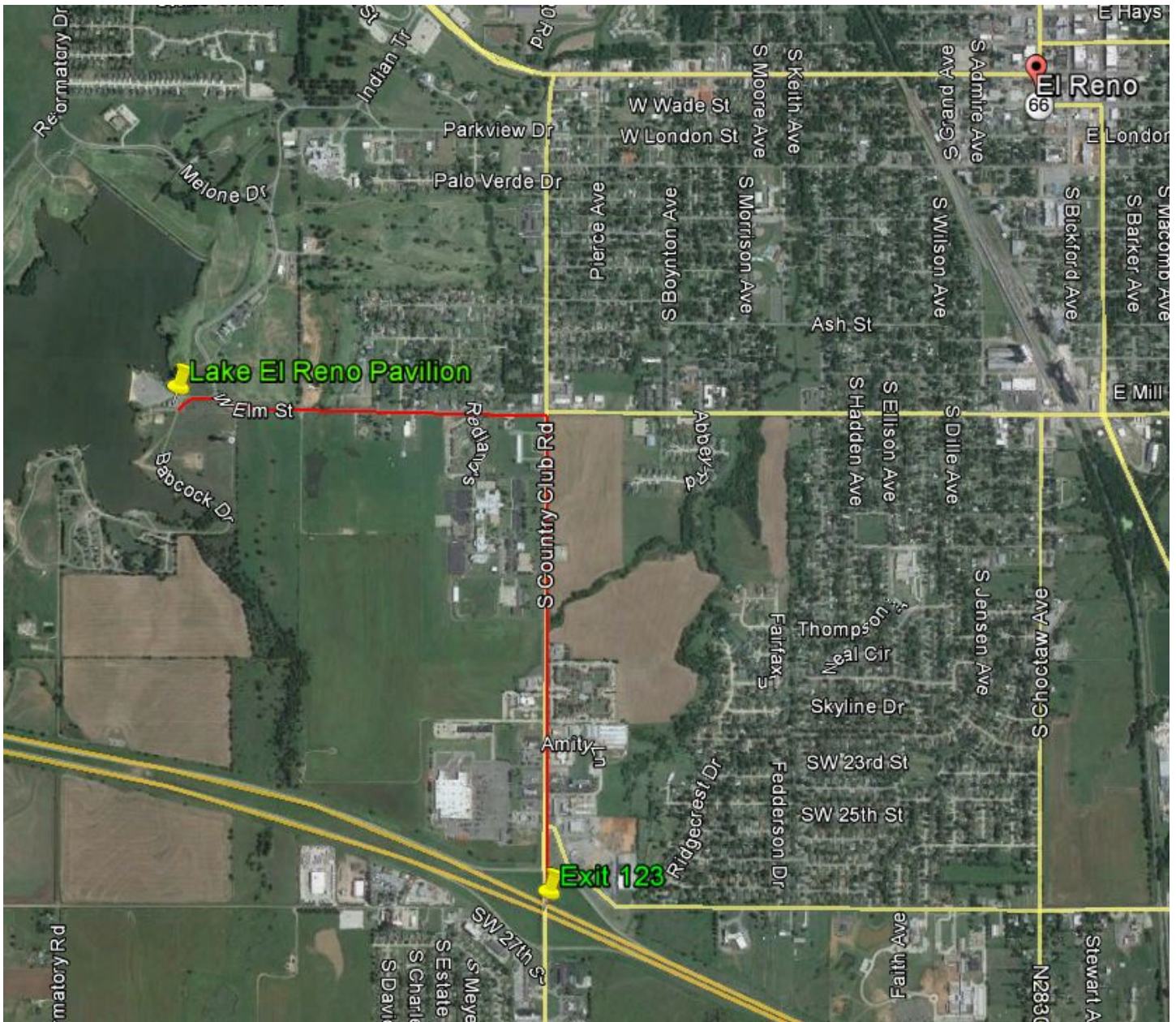


Herland Sister Resources 2312 NW 39th St Oklahoma City 73112
405.521.9696 www.herlandsisters.org herland@herlandsisters.org
Regular hours 2nd and 4th Saturdays from 1-5 pm

Day Retreat (cont. from page 1)

How do I get there? If you take I-40 west from Oklahoma City, take exit 123 and go North 1.0 mile to W Elm St. From there go west 0.75 mile to the pavilion.

If you take Route 66, it will jog north and then intersect W Elm St. Go west on Elm St 1.85 miles. You'll see a big sign and the pavilion is to the left. You can't miss it and **we look forward to seeing you there!**



The Herland Voice is a publication of Herland Sister Resources, 2312 NW 39th, OKC, OK 73112. Our center is open the second and fourth Saturdays from 1-5 pm. Call us at (405) 521-9696 or email us at herland@herlandsisters.org. Visit us on the web at www.herlandsisters.org or on Facebook at Herland Sister Resources.

What's Happening

1ST FRIDAY MOVIE NIGHT

7 pm, Friday, May 6
Herland, 2312 NW 39th St

SPRING DAY RETREAT

11 am to 7 pm, Saturday, May 14,
Lake El Reno

MINIATURE GOLF

7 pm, Saturday, May 28
Celebration Station

1ST FRIDAY MOVIE NIGHT

7 pm, Friday, June 3
Herland, 2312 NW 39th St

JUNE SUPPER CLUB

5:30 pm, Saturday, June 11
The Big Easy
359 E Main St, Yukon

PRIDE PICNIC

5:30 pm, Saturday, June 25
Herland, 2312 NW 39th St

OKC PRIDE PARADE

Sunday, June 26

1ST FRIDAY MOVIE NIGHT

7 pm, Friday, July 1
Herland, 2312 NW 39th St

JULY SUPPER CLUB

5:30 pm, Saturday, July 9
Zorba's, 6014 N May

1ST FRIDAY MOVIE NIGHT

7 pm, Friday, August 5
Herland, 2312 NW 39th St

AUGUST SUPPER CLUB

5:30 pm, Saturday, August 13
Potluck at Herland

1ST FRIDAY MOVIE NIGHT

7 pm, Friday, September 2
Herland, 2312 NW 39th St

SEPTEMBER SUPPER CLUB

5:30 pm, Saturday, Sept 10
Mama Roja Mexican Kitchen
9219 Lake Hefner Parkway

1ST FRIDAY MOVIE NIGHT

7 pm, Friday, October 7
Herland, 2312 NW 39th St

OCTOBER SUPPER CLUB

5:30 pm, Saturday, Oct 8
Royal Bavaria

Herland's Annual Pride Picnic—June 25th!

Be sure to save this date! Our Pride Picnic will be at Herland, 2312 NW 39th Street, Saturday, June 25th with food being served starting at 5:30 and Entertainment at 6:30. Cost is \$7 for adults and \$4 for kids over 6 years of age.

As usual, we'll have Hamburgers, Hotdogs, Shamburgers, Notdogs, and all the fixings, but if you'd like to bring a side dish to share, you're more than welcome to do so.

If YOU would like to be part of the Entertainment, just let us know via

The logo features the year '2016' in a dark blue, sans-serif font. Below it, the word 'PRIDE' is written in large, bold, block letters. Each letter of 'PRIDE' is filled with a different color from the rainbow spectrum: P (red), R (orange), I (yellow), D (green), and E (purple).

FB or email!

This is always a fun event where you'll see old friends, and make new ones. We hope you'll join us!

And you are welcome to ride on the Herland Pride Parade float/vehicle. Just let us know if you would like us to save you a seat.

SISU Youth Update

SISU Youth Inc. has had its first weekend of overnight guests. Right now services are limited to youth over the age of 18 because of legal requirements. SISU continues to need our support as it continues to expand services.

Our Dorm volunteer team performed its first full day of street outreach today. We went in search of a 22 year old female who has been sleeping outside for months. As we drove around the busy booming area of town where the young lady was last seen, we discussed how when you really look around, you can see so many people in great need roaming the streets of our city.

Today we had a mission to help one. We located her, she was able to shower and get fresh clothing and supplies, she stocked up on food, she shared a little trust with us and made some first steps in working with our incredible partners at HOPE Community Services, where she can begin receiving help and housing.

We thank you for supporting Sisu Youth and for allowing us to do some life-changing work. We need more volunteers and monetary donations to expand our shelter services beyond the weekend nights to 7 nights a week. The 22 year old we assisted today will stay with us this weekend, and from the trust she builds with us at the dorm, and from meeting with other service agencies on-site, she will be one step closer to a path that leads her to healing and hopefulness.

To donate, or to volunteer please visit www.sisuyouth.org

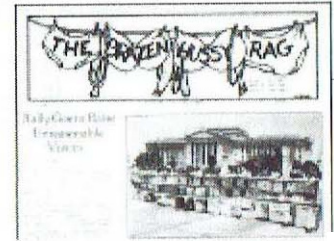
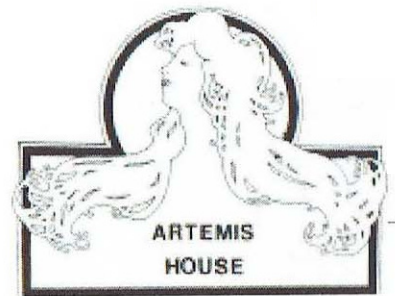
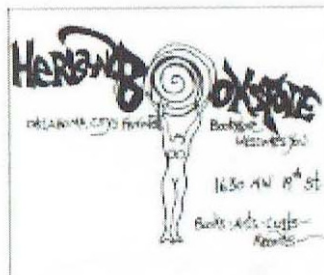
UCO—Herland History Project

UCO professor Lindsey Churchill is excited to announce that she received final approval for a nearly \$30,000 grant to support archiving and preserving the history of Herland Sister Resources. The final step is approval of the oral history interview questions by the Internal Review Board.

The official start date for the students (7 to 8 undergrads and 6 to 7 grad students) is August 22, 2016. The grant goes through May 2017. Lindsey would like to, however, schedule individual and group interviews way in advance to make sure as many people as possible are included.

If you would like to participate in this project, please email us at herland@herlandsisters.org and give us your contact info. We will pass it along and you will be contacted to arrange an interview time.

Please join us as we preserve the herstory of Herland!



HERLAND FILE COPY

herland newsletter

September 1984 a publication of Herland Bookstore, 1630 N.W. 19th Oklahoma City 73106

NATIVE AMERICAN WOMEN AND CHILDREN IN SHELTER

The main difference in providing social services to people of other cultures than the major culture in this country is style, according to Kathy Denman, Coordinator of the Indian Health Board Family Violence Program, Minneapolis, Minnesota.

Denman is one of 38 presenters at Oklahoma's first state-wide conference on domestic violence and sexual assault, "Searching for Solutions." The conference is November 1-3, 1984, at the Oklahoma Center for Continuing Education, Norman.

"In style, the way people process things, communication can break down between different cultures," Denman said in a telephone interview. "As a therapist, I try to make the fit the client. Otherwise, they may see something wrong with them if it doesn't fit the services."

Denman is a Black woman who is a member of the task force for the Minnesota Center on Domestic Violence. Blacks use a front-end style, more up in the face, she says they communicate, Denman explained.

American Indians are indirect," Denman said, "drawn into a slower pace and life-intake worker in a shelter for battered women needs to know that women from different cultures have different reactions to services in general, confrontation with a client is explaining the cycle of violence at a time when the client is primarily d with her five kids and feeding them) barriers for the Indian woman who is a safe space and counseling."

Denman will be presenting two workshops at "Searching for Solutions." In "A History of Indian Victimization," she will describe American history from a different perspective to provide an understanding of how Indian values affect service provision to the Indian community. "A Cultural Awareness of Indians" will help non-Indians understand basic cultural issues including holistic health, myths, comparative cultural values on family, peace and time.

"There aren't a lot of Native Americans in the shelters," Denman said. "In a traditional setting I have worked as an intake worker and have had 20 minutes allotted to assign a therapist. I have also worked in a non-traditional setting doing outreach to rural areas and counseling on reservations. There, you enter their schedule and your client may not move at that pace."

"I believe in accommodation," Denman said, "and my environment is me. When a client comes into my office they see rugs, feathers, beads and we may talk about that before filling out forms. As an Indian I don't ask for names first. I ask, where are you from and what tribe are you from. I can usually tell whether a client is traditional or progressive. I ask them where they are spiritually. All these things will help me in counseling and connecting them with other resources in the community."

Especially important is whether a client speaks another language and which came first, according to Denman. If a client's first language is Ojibwa, their thinking process will be in Ojibwa. In therapy, when you get on an unconscious level, you may lose 30% of what's being exchanged, Denman said.

"The symptoms of domestic violence for Indian: are similar to that of any other culture, but what led up to it and what happens after is different," Denman said.

"Searching for Solutions" is sponsored by the Oklahoma Coalition on Domestic Violence and Sexual Assault and the University of Oklahoma Women's Studies Program. The conference is from 12:00 noon Thursday, November 1 to 3:00 p.m. Saturday, November 3, 1984. Members of the OCDVSA may register for \$15.00; non-members may register for \$35.00; membership to the OCDVSA is \$15.00. Scholarships are available. Child care will be provided at no extra charge. The conference is accessible to the handicapped and sign language interpreters will be provided.

cont. p. 2

Ways to Help

Are you proud when you see the Herland float in the Pride parade? Do you enjoy the Herland Sister cookout during Pride weekend? Have you enjoyed a retreat, a winter holiday party and potluck or supper club? Then you are a part of the Herland family.

But all of these things along with maintenance of the house needs your help. What can you do? First you can join as a member and support Herland with annual dues. You can pay your dues in dollars or in volunteer time so there's no reason to not be a member.

But you can also remember Herland when you decide what to do with your resources when you leave this world. About a year ago, Herland graciously received the pension benefits of a long time supporter of Herland and women's programs. Because of this, we no longer struggle to pay bills each month and have been able to send our board members to training. Her gift will forever impact Herland and all that we are able to do.

Planned giving is something we can all think about. Maybe you have something you have not thought about. If you have any asset, such as a life insurance policy, a pension, an IRA, or a savings account, you may want to consider designating Herland as one of your beneficiaries.

For more information, talk to board member Suzanne Nichols. Thank you!

The Big Event

Thanks to our fantastic crew from OU School of Geology and Geophysics for all of their help on Big Event Day! They were awesome!



HERLAND

2312 NW 39th St Oklahoma City, OK 73112

Ginny Poindexter Realtor

405.919.8443 Direct
405.948.7500 Office
405.948.7502 Fax
GinnyPoindexter@kw.com

KELLER WILLIAMS

5629 N. Classen Blvd. Oklahoma City, OK 73118

Each office is independently owned and operated.



The Shop

Jeff
(405) 850-0217 cell
(405) 610-2600 office

9244 NE 10th Street
Midwest City, OK 73130-1318



*Car Repair and Sales
Free Estimates*



Feed your Spirit ...
Body & Mind

322 East Main Street
Downtown Norman, OK 73072
405-366-7243
sandalwoodandsage@att.net

Clothing & Hemp Accessories * Bath & Body Products
Jewelry & Crystals * Books & CD's * Statuary & Chimes
Note Cards & Bumper Stickers * Incense & Candles and more



Sandy Ingraham, J.D., M.S.W.
Attorney-at-Law
Ingraham & Associates, PLLC

Estate Planning, Wills, Trusts, Probate, Adoption, Contracts

333629 E Kickapoo Valley Rd
McLoud, OK 74851

Ofc (405) 964-2072
SandyJoIngraham@gmail.com